



Full wwPDB X-ray Structure Validation Report ⓘ

Aug 14, 2016 – 10:30 PM EDT

PDB ID : 5I3P
Title : DENGUE SEROTYPE 3 RNA-DEPENDENT RNA POLYMERASE BOUND
TO COMPOUND 27
Authors : Noble, C.G.
Deposited on : 2016-02-10
Resolution : 2.45 Å(reported)

This is a Full wwPDB X-ray Structure Validation Report for a publicly released PDB entry.

We welcome your comments at validation@mail.wwpdb.org

A user guide is available at

<http://wwpdb.org/validation/2016/XrayValidationReportHelp>

with specific help available everywhere you see the ⓘ symbol.

The following versions of software and data (see [references ⓘ](#)) were used in the production of this report:

MolProbity : 4.02b-467
Mogul : 1.7.1 (RC1), CSD as537be (2016)
Xtriage (Phenix) : 1.9-1692
EDS : rb-20027939
Percentile statistics : 20151230.v01 (using entries in the PDB archive December 30th 2015)
Refmac : 5.8.0135
CCP4 : 6.5.0
Ideal geometry (proteins) : Engh & Huber (2001)
Ideal geometry (DNA, RNA) : Parkinson et al. (1996)
Validation Pipeline (wwPDB-VP) : rb-20027939

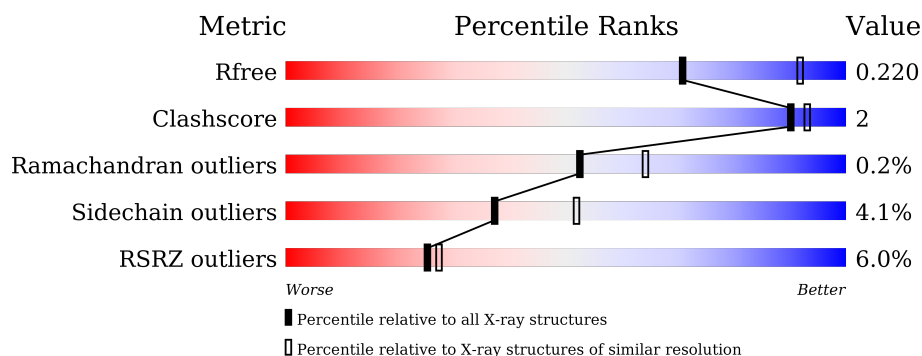
1 Overall quality at a glance

The following experimental techniques were used to determine the structure:

X-RAY DIFFRACTION

The reported resolution of this entry is 2.45 Å.

Percentile scores (ranging between 0-100) for global validation metrics of the entry are shown in the following graphic. The table shows the number of entries on which the scores are based.



Metric	Whole archive (#Entries)	Similar resolution (#Entries, resolution range(Å))
R_{free}	91344	4776 (2.50-2.42)
Clashscore	102246	1030 (2.48-2.44)
Ramachandran outliers	100387	1024 (2.48-2.44)
Sidechain outliers	100360	1024 (2.48-2.44)
RSRZ outliers	91569	4787 (2.50-2.42)

The table below summarises the geometric issues observed across the polymeric chains and their fit to the electron density. The red, orange, yellow and green segments on the lower bar indicate the fraction of residues that contain outliers for ≥ 3 , 2, 1 and 0 types of geometric quality criteria. A grey segment represents the fraction of residues that are not modelled. The numeric value for each fraction is indicated below the corresponding segment, with a dot representing fractions $\leq 5\%$. The upper red bar (where present) indicates the fraction of residues that have poor fit to the electron density. The numeric value is given above the bar.

Mol	Chain	Length	Quality of chain
1	A	635	<div> <div>6%</div> <div>83%</div> <div>8%</div> <div>8%</div> </div>

2 Entry composition

There are 4 unique types of molecules in this entry. The entry contains 5177 atoms, of which 0 are hydrogens and 0 are deuteriums.

In the tables below, the ZeroOcc column contains the number of atoms modelled with zero occupancy, the AltConf column contains the number of residues with at least one atom in alternate conformation and the Trace column contains the number of residues modelled with at most 2 atoms.

- Molecule 1 is a protein called Genome polyprotein.

Mol	Chain	Residues	Atoms					ZeroOcc	AltConf	Trace
1	A	585	Total	C	N	O	S	0	4	0
			4782	3021	856	874	31			

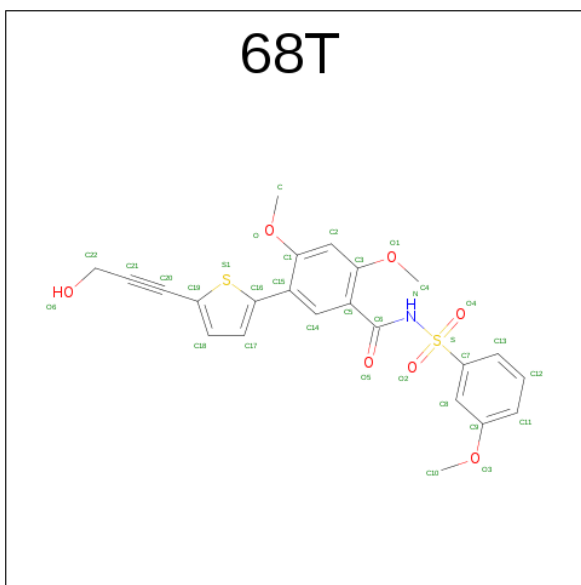
There are 7 discrepancies between the modelled and reference sequences:

Chain	Residue	Modelled	Actual	Comment	Reference
A	266	GLY	-	expression tag	UNP Q6DLV0
A	267	SER	-	expression tag	UNP Q6DLV0
A	268	HIS	-	expression tag	UNP Q6DLV0
A	269	MET	-	expression tag	UNP Q6DLV0
A	270	LEU	-	expression tag	UNP Q6DLV0
A	271	ASP	-	expression tag	UNP Q6DLV0
A	374	GLU	GLY	variant	UNP Q6DLV0

- Molecule 2 is ZINC ION (three-letter code: ZN) (formula: Zn).

Mol	Chain	Residues	Atoms		ZeroOcc	AltConf
2	A	2	Total	Zn	0	0
			2	2		

- Molecule 3 is 5-[5-(3-hydroxyprop-1-yn-1-yl)thiophen-2-yl]-2,4-dimethoxy-N-[(3-methoxyphenyl)sulfonyl]benzamide (three-letter code: 68T) (formula: C₂₃H₂₁NO₇S₂).



Mol	Chain	Residues	Atoms					ZeroOcc	AltConf
3	A	1	Total	C	N	O	S	0	0
			33	23	1	7	2		

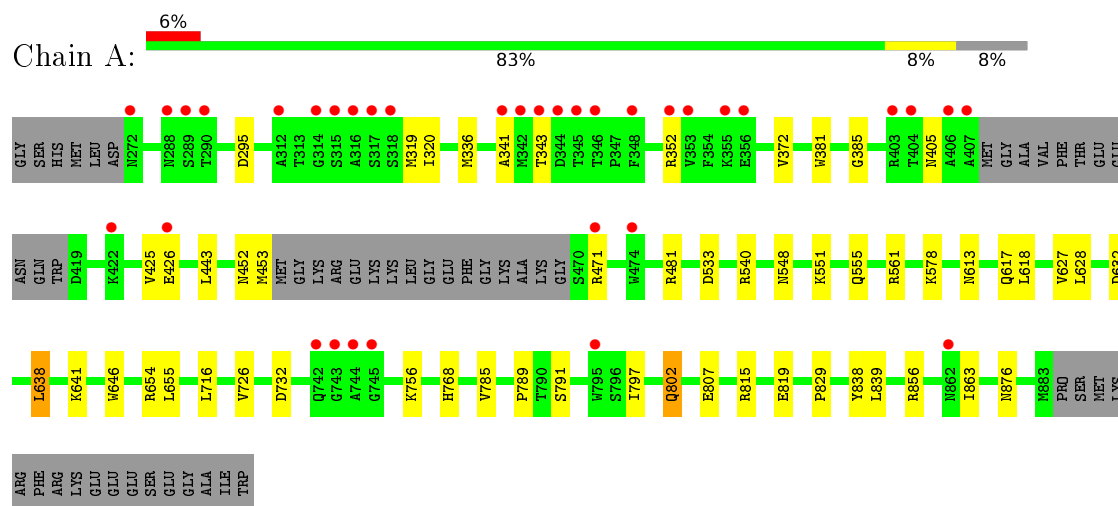
- Molecule 4 is water.

Mol	Chain	Residues	Atoms	ZeroOcc	AltConf
4	A	360	Total O 360 360	0	0

3 Residue-property plots [i](#)

These plots are drawn for all protein, RNA and DNA chains in the entry. The first graphic for a chain summarises the proportions of errors displayed in the second graphic. The second graphic shows the sequence view annotated by issues in geometry and electron density. Residues are color-coded according to the number of geometric quality criteria for which they contain at least one outlier: green = 0, yellow = 1, orange = 2 and red = 3 or more. A red dot above a residue indicates a poor fit to the electron density ($RSRZ > 2$). Stretches of 2 or more consecutive residues without any outlier are shown as a green connector. Residues present in the sample, but not in the model, are shown in grey.

• Molecule 1: Genome polypeptide



4 Data and refinement statistics

Property	Value	Source
Space group	C 2 2 21	Depositor
Cell constants a, b, c, α , β , γ	161.36Å 176.11Å 57.91Å 90.00° 90.00° 90.00°	Depositor
Resolution (Å)	31.48 – 2.45 30.98 – 2.45	Depositor EDS
% Data completeness (in resolution range)	99.8 (31.48-2.45) 99.8 (30.98-2.45)	Depositor EDS
R_{merge}	0.12	Depositor
R_{sym}	(Not available)	Depositor
$\langle I/\sigma(I) \rangle$ ¹	2.37 (at 2.45Å)	Xtriage
Refinement program	BUSTER-TNT	Depositor
R, R_{free}	0.169 , 0.221 0.168 , 0.220	Depositor DCC
R_{free} test set	1552 reflections (5.31%)	DCC
Wilson B-factor (Å ²)	41.7	Xtriage
Anisotropy	0.485	Xtriage
Bulk solvent k_{sol} (e/Å ³), B_{sol} (Å ²)	0.34 , 68.3	EDS
L-test for twinning ²	$\langle L \rangle = 0.48$, $\langle L^2 \rangle = 0.31$	Xtriage
Estimated twinning fraction	No twinning to report.	Xtriage
F_o, F_c correlation	0.96	EDS
Total number of atoms	5177	wwPDB-VP
Average B, all atoms (Å ²)	49.0	wwPDB-VP

Xtriage's analysis on translational NCS is as follows: *The largest off-origin peak in the Patterson function is 4.92% of the height of the origin peak. No significant pseudotranslation is detected.*

¹Intensities estimated from amplitudes.

²Theoretical values of $\langle |L| \rangle$, $\langle L^2 \rangle$ for acentric reflections are 0.5, 0.333 respectively for untwinned datasets, and 0.375, 0.2 for perfectly twinned datasets.

5 Model quality

5.1 Standard geometry

Bond lengths and bond angles in the following residue types are not validated in this section: 68T, ZN

The Z score for a bond length (or angle) is the number of standard deviations the observed value is removed from the expected value. A bond length (or angle) with $|Z| > 5$ is considered an outlier worth inspection. RMSZ is the root-mean-square of all Z scores of the bond lengths (or angles).

Mol	Chain	Bond lengths		Bond angles	
		RMSZ	$\# Z > 5$	RMSZ	$\# Z > 5$
1	A	0.52	0/4915	0.67	0/6657

There are no bond length outliers.

There are no bond angle outliers.

There are no chirality outliers.

There are no planarity outliers.

5.2 Too-close contacts

In the following table, the Non-H and H(model) columns list the number of non-hydrogen atoms and hydrogen atoms in the chain respectively. The H(added) column lists the number of hydrogen atoms added and optimized by MolProbity. The Clashes column lists the number of clashes within the asymmetric unit, whereas Symm-Clashes lists symmetry related clashes.

Mol	Chain	Non-H	H(model)	H(added)	Clashes	Symm-Clashes
1	A	4782	0	4681	22	0
2	A	2	0	0	0	0
3	A	33	0	0	0	0
4	A	360	0	0	0	0
All	All	5177	0	4681	22	0

The all-atom clashscore is defined as the number of clashes found per 1000 atoms (including hydrogen atoms). The all-atom clashscore for this structure is 2.

All (22) close contacts within the same asymmetric unit are listed below, sorted by their clash magnitude.

Atom-1	Atom-2	Interatomic distance (Å)	Clash overlap (Å)
1:A:802:GLN:H	1:A:802:GLN:HE21	1.31	0.76
1:A:372:VAL:HG11	1:A:628:LEU:HD11	1.77	0.67
1:A:716:LEU:HD21	1:A:839:LEU:HD23	1.82	0.60
1:A:548:ASN:HD22	1:A:551:LYS:HE2	1.73	0.53
1:A:320:ILE:HD11	1:A:341:ALA:HB1	1.91	0.52
1:A:815:ARG:HA	1:A:819:GLU:HB2	1.92	0.52
1:A:452:ASN:HD21	1:A:578:LYS:HD2	1.76	0.51
1:A:627:VAL:HG21	1:A:646:TRP:CD1	2.46	0.50
1:A:646:TRP:CZ2	1:A:654:ARG:HG3	2.50	0.46
1:A:372:VAL:HG21	1:A:628:LEU:HD21	1.97	0.46
1:A:385:GLY:HA3	1:A:555:GLN:HE22	1.80	0.46
1:A:618:LEU:HD11	1:A:655:LEU:HD21	1.97	0.45
1:A:381:TRP:CD1	1:A:551:LYS:HB2	2.52	0.45
1:A:756:LYS:HG2	1:A:789:PRO:HG3	2.00	0.44
1:A:632:ASP:HB3	1:A:638:LEU:HD13	2.01	0.43
1:A:863:ILE:HA	1:A:863:ILE:HD12	1.94	0.43
1:A:613:ASN:O	1:A:617:GLN:HG2	2.19	0.43
1:A:768:HIS:HA	1:A:838:TYR:HA	2.01	0.41
1:A:540:ARG:HA	1:A:540:ARG:HD2	1.83	0.41
1:A:726:VAL:HB	1:A:768:HIS:CE1	2.56	0.41
1:A:807:GLU:CD	1:A:815:ARG:HH22	2.24	0.40
1:A:336:MET:HB3	1:A:732:ASP:HB3	2.01	0.40

There are no symmetry-related clashes.

5.3 Torsion angles ⓘ

5.3.1 Protein backbone ⓘ

In the following table, the Percentiles column shows the percent Ramachandran outliers of the chain as a percentile score with respect to all X-ray entries followed by that with respect to entries of similar resolution.

The Analysed column shows the number of residues for which the backbone conformation was analysed, and the total number of residues.

Mol	Chain	Analysed	Favoured	Allowed	Outliers	Percentiles	
1	A	583/635 (92%)	561 (96%)	21 (4%)	1 (0%)	52	64

All (1) Ramachandran outliers are listed below:

Mol	Chain	Res	Type
1	A	343	THR

5.3.2 Protein sidechains ⓘ

In the following table, the Percentiles column shows the percent sidechain outliers of the chain as a percentile score with respect to all X-ray entries followed by that with respect to entries of similar resolution.

The Analysed column shows the number of residues for which the sidechain conformation was analysed, and the total number of residues.

Mol	Chain	Analysed	Rotameric	Outliers	Percentiles
1	A	514/552 (93%)	493 (96%)	21 (4%)	37 52

All (21) residues with a non-rotameric sidechain are listed below:

Mol	Chain	Res	Type
1	A	295	ASP
1	A	319	MET
1	A	352	ARG
1	A	405	ASN
1	A	425	VAL
1	A	426	GLU
1	A	443	LEU
1	A	453	MET
1	A	471	ARG
1	A	481	ARG
1	A	533	ASP
1	A	561	ARG
1	A	638	LEU
1	A	641	LYS
1	A	785	VAL
1	A	791	SER
1	A	797	ILE
1	A	802	GLN
1	A	829	PRO
1	A	856	ARG
1	A	876	ASN

Some sidechains can be flipped to improve hydrogen bonding and reduce clashes. All (12) such sidechains are listed below:

Mol	Chain	Res	Type
1	A	272	ASN
1	A	287	HIS
1	A	339	GLN
1	A	452	ASN
1	A	548	ASN
1	A	555	GLN
1	A	682	ASN
1	A	742	GLN
1	A	760	GLN
1	A	768	HIS
1	A	802	GLN
1	A	835	ASN

5.3.3 RNA [i](#)

There are no RNA molecules in this entry.

5.4 Non-standard residues in protein, DNA, RNA chains [i](#)

There are no non-standard protein/DNA/RNA residues in this entry.

5.5 Carbohydrates [i](#)

There are no carbohydrates in this entry.

5.6 Ligand geometry [i](#)

Of 3 ligands modelled in this entry, 2 are monoatomic - leaving 1 for Mogul analysis.

In the following table, the Counts columns list the number of bonds (or angles) for which Mogul statistics could be retrieved, the number of bonds (or angles) that are observed in the model and the number of bonds (or angles) that are defined in the chemical component dictionary. The Link column lists molecule types, if any, to which the group is linked. The Z score for a bond length (or angle) is the number of standard deviations the observed value is removed from the expected value. A bond length (or angle) with $|Z| > 2$ is considered an outlier worth inspection. RMSZ is the root-mean-square of all Z scores of the bond lengths (or angles).

Mol	Type	Chain	Res	Link	Bond lengths			Bond angles		
					Counts	RMSZ	$\# Z > 2$	Counts	RMSZ	$\# Z > 2$
3	68T	A	1003	-	31,35,35	0.28	0	39,49,49	0.52	0

In the following table, the Chirals column lists the number of chiral outliers, the number of chiral

centers analysed, the number of these observed in the model and the number defined in the chemical component dictionary. Similar counts are reported in the Torsion and Rings columns. '-' means no outliers of that kind were identified.

Mol	Type	Chain	Res	Link	Chirals	Torsions	Rings
3	68T	A	1003	-	-	0/24/29/29	0/3/3/3

There are no bond length outliers.

There are no bond angle outliers.

There are no chirality outliers.

There are no torsion outliers.

There are no ring outliers.

No monomer is involved in short contacts.

5.7 Other polymers ⓘ

There are no such residues in this entry.

5.8 Polymer linkage issues ⓘ

There are no chain breaks in this entry.

6 Fit of model and data ⓘ

6.1 Protein, DNA and RNA chains ⓘ

In the following table, the column labelled ‘#RSRZ> 2’ contains the number (and percentage) of RSRZ outliers, followed by percent RSRZ outliers for the chain as percentile scores relative to all X-ray entries and entries of similar resolution. The OWAB column contains the minimum, median, 95th percentile and maximum values of the occupancy-weighted average B-factor per residue. The column labelled ‘Q< 0.9’ lists the number of (and percentage) of residues with an average occupancy less than 0.9.

Mol	Chain	Analysed	<RSRZ>	#RSRZ>2	OWAB(Å ²)	Q<0.9
1	A	585/635 (92%)	-0.05	35 (5%) 25 27	26, 46, 82, 110	0

All (35) RSRZ outliers are listed below:

Mol	Chain	Res	Type	RSRZ
1	A	744	ALA	5.9
1	A	743	GLY	5.7
1	A	352	ARG	5.4
1	A	406	ALA	5.3
1	A	407	ALA	5.1
1	A	353	VAL	4.6
1	A	348	PHE	4.1
1	A	344	ASP	3.9
1	A	343	THR	3.7
1	A	345	THR	3.6
1	A	272	ASN	3.5
1	A	355	LYS	3.4
1	A	341	ALA	3.4
1	A	315	SER	3.3
1	A	316	ALA	3.2
1	A	318	SER	3.2
1	A	404	THR	3.2
1	A	745	GLY	3.1
1	A	356	GLU	3.1
1	A	317	SER	3.1
1	A	342	MET	2.9
1	A	742	GLN	2.9
1	A	795	TRP	2.7
1	A	346	THR	2.7
1	A	288	ASN	2.7
1	A	471	ARG	2.6
1	A	290	THR	2.6

Continued on next page...

Continued from previous page...

Mol	Chain	Res	Type	RSRZ
1	A	403	ARG	2.6
1	A	426	GLU	2.6
1	A	422	LYS	2.5
1	A	312	ALA	2.4
1	A	862	ASN	2.3
1	A	314	GLY	2.2
1	A	289	SER	2.2
1	A	474	TRP	2.1

6.2 Non-standard residues in protein, DNA, RNA chains [i](#)

There are no non-standard protein/DNA/RNA residues in this entry.

6.3 Carbohydrates [i](#)

There are no carbohydrates in this entry.

6.4 Ligands [i](#)

In the following table, the Atoms column lists the number of modelled atoms in the group and the number defined in the chemical component dictionary. LLDF column lists the quality of electron density of the group with respect to its neighbouring residues in protein, DNA or RNA chains. The B-factors column lists the minimum, median, 95th percentile and maximum values of B factors of atoms in the group. The column labelled 'Q< 0.9' lists the number of atoms with occupancy less than 0.9.

Mol	Type	Chain	Res	Atoms	RSCC	RSR	LLDF	B-factors(\AA^2)	Q<0.9
3	68T	A	1003	33/33	0.97	0.12	-0.40	33,44,61,67	0
2	ZN	A	1002	1/1	1.00	0.10	-1.11	48,48,48,48	0
2	ZN	A	1001	1/1	0.99	0.05	-3.47	53,53,53,53	0

6.5 Other polymers [i](#)

There are no such residues in this entry.