



Full wwPDB X-ray Structure Validation Report ⓘ

Feb 1, 2016 – 05:24 PM GMT

PDB ID : 4IA0
Title : Crystal structure of the PDE5A1 catalytic domain in complex with novel inhibitors
Authors : Ren, J.; Chen, T.; Xu, Y.
Deposited on : 2012-12-05
Resolution : 2.17 Å(reported)

This is a Full wwPDB X-ray Structure Validation Report for a publicly released PDB entry.
We welcome your comments at validation@mail.wwpdb.org
A user guide is available at
<http://wwpdb.org/validation/2016/XrayValidationReportHelp>
with specific help available everywhere you see the ⓘ symbol.

The following versions of software and data (see [references ⓘ](#)) were used in the production of this report:

MolProbity : 4.02b-467
Mogul : 1.7 (RC4), CSD as536be (2015)
Xtriage (Phenix) : 1.9-1692
EDS : rb-20026688
Percentile statistics : 20151230.v01 (using entries in the PDB archive December 30th 2015)
Refmac : 5.8.0135
CCP4 : 6.5.0
Ideal geometry (proteins) : Engh & Huber (2001)
Ideal geometry (DNA, RNA) : Parkinson et al. (1996)
Validation Pipeline (wwPDB-VP) : trunk26865

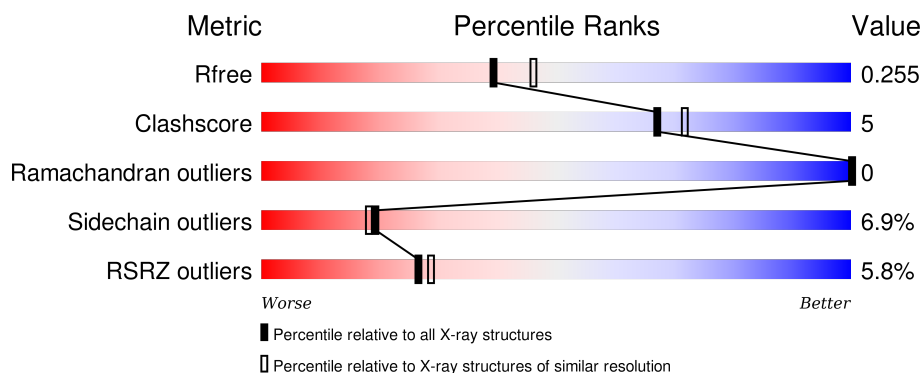
1 Overall quality at a glance

The following experimental techniques were used to determine the structure:

X-RAY DIFFRACTION

The reported resolution of this entry is 2.17 Å.

Percentile scores (ranging between 0-100) for global validation metrics of the entry are shown in the following graphic. The table shows the number of entries on which the scores are based.



Metric	Whole archive (#Entries)	Similar resolution (#Entries, resolution range(Å))
R_{free}	91344	5130 (2.20-2.16)
Clashscore	102246	5965 (2.20-2.16)
Ramachandran outliers	100387	5863 (2.20-2.16)
Sidechain outliers	100360	5864 (2.20-2.16)
RSRZ outliers	91569	5142 (2.20-2.16)

The table below summarises the geometric issues observed across the polymeric chains and their fit to the electron density. The red, orange, yellow and green segments on the lower bar indicate the fraction of residues that contain outliers for ≥ 3 , 2, 1 and 0 types of geometric quality criteria. A grey segment represents the fraction of residues that are not modelled. The numeric value for each fraction is indicated below the corresponding segment, with a dot representing fractions $\leq 5\%$. The upper red bar (where present) indicates the fraction of residues that have poor fit to the electron density. The numeric value is given above the bar.

Mol	Chain	Length	Quality of chain
1	A	347	<div> <div>5%</div> <div>70%</div> <div>12%</div> <div>•</div> <div>16%</div> </div>

2 Entry composition

There are 5 unique types of molecules in this entry. The entry contains 2472 atoms, of which 0 are hydrogens and 0 are deuteriums.

In the tables below, the ZeroOcc column contains the number of atoms modelled with zero occupancy, the AltConf column contains the number of residues with at least one atom in alternate conformation and the Trace column contains the number of residues modelled with at most 2 atoms.

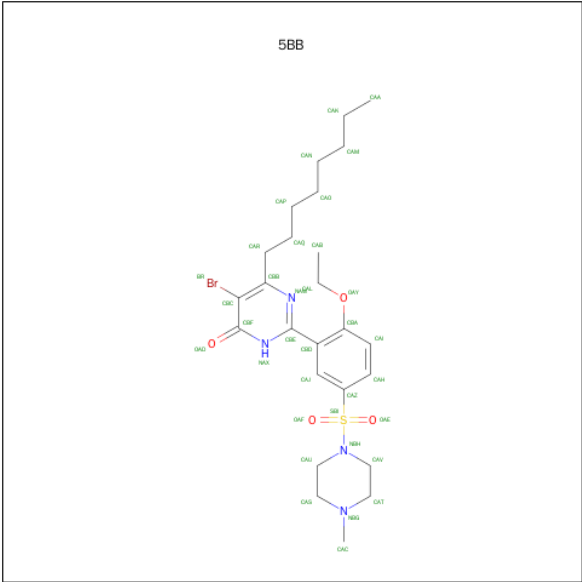
- Molecule 1 is a protein called cGMP-specific 3',5'-cyclic phosphodiesterase.

Mol	Chain	Residues	Atoms					ZeroOcc	AltConf	Trace
1	A	292	Total	C	N	O	S	0	1	0
			2364	1511	405	431	17			

There are 21 discrepancies between the modelled and reference sequences:

Chain	Residue	Modelled	Actual	Comment	Reference
A	514	MET	-	EXPRESSION TAG	UNP O76074
A	515	GLY	-	EXPRESSION TAG	UNP O76074
A	516	SER	-	EXPRESSION TAG	UNP O76074
A	517	SER	-	EXPRESSION TAG	UNP O76074
A	518	HIS	-	EXPRESSION TAG	UNP O76074
A	519	HIS	-	EXPRESSION TAG	UNP O76074
A	520	HIS	-	EXPRESSION TAG	UNP O76074
A	521	HIS	-	EXPRESSION TAG	UNP O76074
A	522	HIS	-	EXPRESSION TAG	UNP O76074
A	523	HIS	-	EXPRESSION TAG	UNP O76074
A	524	SER	-	EXPRESSION TAG	UNP O76074
A	525	SER	-	EXPRESSION TAG	UNP O76074
A	526	GLY	-	EXPRESSION TAG	UNP O76074
A	527	LEU	-	EXPRESSION TAG	UNP O76074
A	528	VAL	-	EXPRESSION TAG	UNP O76074
A	529	PRO	-	EXPRESSION TAG	UNP O76074
A	530	ARG	-	EXPRESSION TAG	UNP O76074
A	531	GLY	-	EXPRESSION TAG	UNP O76074
A	532	SER	-	EXPRESSION TAG	UNP O76074
A	533	HIS	-	EXPRESSION TAG	UNP O76074
A	534	MET	-	EXPRESSION TAG	UNP O76074

- Molecule 2 is 5-BROMO-2-{2-ETHOXY-5-[(4-METHYLPIPERAZIN-1-YL)SULFONYL]PHENYL}-6-OCTYLPYRIMIDIN-4(3H)-ONE (three-letter code: 5BB) (formula: C₂₅H₃₇BrN₄O₄S).



Mol	Chain	Residues	Atoms						ZeroOcc	AltConf
2	A	1	Total	Br	C	N	O	S	0	0
			35	1	25	4	4	1		

- Molecule 3 is ZINC ION (three-letter code: ZN) (formula: Zn).

Mol	Chain	Residues	Atoms		ZeroOcc	AltConf
3	A	1	Total	Zn	0	0
			1	1		

- Molecule 4 is MAGNESIUM ION (three-letter code: MG) (formula: Mg).

Mol	Chain	Residues	Atoms		ZeroOcc	AltConf
4	A	1	Total	Mg	0	0
			1	1		

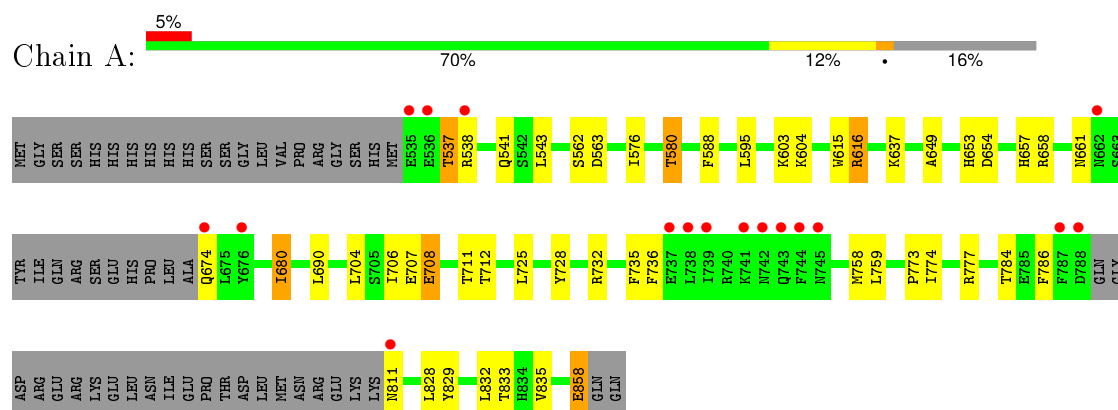
- Molecule 5 is water.

Mol	Chain	Residues	Atoms		ZeroOcc	AltConf
5	A	71	Total	O	0	0
			71	71		

3 Residue-property plots [i](#)

These plots are drawn for all protein, RNA and DNA chains in the entry. The first graphic for a chain summarises the proportions of errors displayed in the second graphic. The second graphic shows the sequence view annotated by issues in geometry and electron density. Residues are color-coded according to the number of geometric quality criteria for which they contain at least one outlier: green = 0, yellow = 1, orange = 2 and red = 3 or more. A red dot above a residue indicates a poor fit to the electron density ($\text{RSRZ} > 2$). Stretches of 2 or more consecutive residues without any outlier are shown as a green connector. Residues present in the sample, but not in the model, are shown in grey.

- Molecule 1: cGMP-specific 3',5'-cyclic phosphodiesterase



4 Data and refinement statistics

Property	Value	Source
Space group	P 31 2 1	Depositor
Cell constants a, b, c, α , β , γ	74.43 Å 74.43 Å 131.26 Å 90.00° 90.00° 120.00°	Depositor
Resolution (Å)	36.20 – 2.17 36.20 – 2.17	Depositor EDS
% Data completeness (in resolution range)	99.7 (36.20-2.17) 99.7 (36.20-2.17)	Depositor EDS
R_{merge}	0.05	Depositor
R_{sym}	(Not available)	Depositor
$\langle I/\sigma(I) \rangle$ ¹	4.53 (at 2.18 Å)	Xtriage
Refinement program	PHENIX (phenix.refine: 1.8_1069)	Depositor
R, R_{free}	0.214 , 0.253 0.218 , 0.255	Depositor DCC
R_{free} test set	686 reflections (3.10%)	DCC
Wilson B-factor (Å ²)	30.9	Xtriage
Anisotropy	0.105	Xtriage
Bulk solvent k_{sol} (e/Å ³), B_{sol} (Å ²)	0.37 , 46.6	EDS
Estimated twinning fraction	0.035 for -h,-k,l	Xtriage
L-test for twinning ²	$\langle L \rangle = 0.49$, $\langle L^2 \rangle = 0.32$	Xtriage
Outliers	0 of 22836 reflections	Xtriage
F_o, F_c correlation	0.94	EDS
Total number of atoms	2472	wwPDB-VP
Average B, all atoms (Å ²)	39.0	wwPDB-VP

Xtriage's analysis on translational NCS is as follows: *The largest off-origin peak in the Patterson function is 4.74% of the height of the origin peak. No significant pseudotranslation is detected.*

¹Intensities estimated from amplitudes.

²Theoretical values of $\langle |L| \rangle$, $\langle L^2 \rangle$ for acentric reflections are 0.5, 0.375 respectively for untwinned datasets, and 0.333, 0.2 for perfectly twinned datasets.

5 Model quality [i](#)

5.1 Standard geometry [i](#)

Bond lengths and bond angles in the following residue types are not validated in this section: MG, ZN, 5BB

The Z score for a bond length (or angle) is the number of standard deviations the observed value is removed from the expected value. A bond length (or angle) with $|Z| > 5$ is considered an outlier worth inspection. RMSZ is the root-mean-square of all Z scores of the bond lengths (or angles).

Mol	Chain	Bond lengths		Bond angles	
		RMSZ	$\# Z > 5$	RMSZ	$\# Z > 5$
1	A	0.39	0/2412	0.56	2/3257 (0.1%)

There are no bond length outliers.

All (2) bond angle outliers are listed below:

Mol	Chain	Res	Type	Atoms	Z	Observed($^{\circ}$)	Ideal($^{\circ}$)
1	A	616	ARG	NE-CZ-NH2	-6.47	117.06	120.30
1	A	616	ARG	NE-CZ-NH1	5.10	122.85	120.30

There are no chirality outliers.

There are no planarity outliers.

5.2 Too-close contacts [i](#)

In the following table, the Non-H and H(model) columns list the number of non-hydrogen atoms and hydrogen atoms in the chain respectively. The H(added) column lists the number of hydrogen atoms added and optimized by MolProbity. The Clashes column lists the number of clashes within the asymmetric unit, whereas Symm-Clashes lists symmetry related clashes.

Mol	Chain	Non-H	H(model)	H(added)	Clashes	Symm-Clashes
1	A	2364	0	2372	23	0
2	A	35	0	37	0	0
3	A	1	0	0	0	0
4	A	1	0	0	0	0
5	A	71	0	0	0	0
All	All	2472	0	2409	23	0

The all-atom clashscore is defined as the number of clashes found per 1000 atoms (including hydrogen atoms). The all-atom clashscore for this structure is 5.

All (23) close contacts within the same asymmetric unit are listed below, sorted by their clash magnitude.

Atom-1	Atom-2	Interatomic distance (Å)	Clash overlap (Å)
1:A:704:LEU:HB3	1:A:708:GLU:HB3	1.69	0.74
1:A:732:ARG:HD2	1:A:736:PHE:CE2	2.36	0.61
1:A:829:TYR:O	1:A:833:THR:HG23	2.02	0.60
1:A:674:GLN:HA	1:A:680:ILE:HD11	1.86	0.56
1:A:708:GLU:O	1:A:712:THR:HG23	2.10	0.51
1:A:576:ILE:O	1:A:580:THR:HG23	2.13	0.48
1:A:562:SER:HB2	1:A:774:ILE:HD13	1.95	0.48
1:A:773:PRO:O	1:A:777:ARG:HG2	2.14	0.47
1:A:680:ILE:H	1:A:680:ILE:HD12	1.79	0.47
1:A:637:LYS:NZ	1:A:835:VAL:O	2.48	0.47
1:A:707:GLU:O	1:A:711:THR:HG23	2.15	0.46
1:A:728:TYR:CZ	1:A:732:ARG:HD3	2.52	0.45
1:A:661:ASN:ND2	1:A:786:PHE:O	2.44	0.45
1:A:704:LEU:HB3	1:A:708:GLU:CB	2.44	0.44
1:A:735:PHE:CD1	1:A:758:MET:HG3	2.53	0.44
1:A:649:ALA:O	1:A:653:HIS:HB3	2.18	0.44
1:A:654:ASP:O	1:A:657:HIS:HB2	2.18	0.44
1:A:588:PHE:CD1	1:A:704:LEU:HD22	2.54	0.42
1:A:537:THR:O	1:A:541:GLN:HB2	2.19	0.42
1:A:603:LYS:HG2	1:A:615:TRP:CG	2.55	0.42
1:A:858:GLU:H	1:A:858:GLU:HG2	1.72	0.42
1:A:732:ARG:HD2	1:A:736:PHE:HE2	1.81	0.41
1:A:563:ASP:O	1:A:616:ARG:NH2	2.54	0.40

There are no symmetry-related clashes.

5.3 Torsion angles ⓘ

5.3.1 Protein backbone ⓘ

In the following table, the Percentiles column shows the percent Ramachandran outliers of the chain as a percentile score with respect to all X-ray entries followed by that with respect to entries of similar resolution.

The Analysed column shows the number of residues for which the backbone conformation was analysed, and the total number of residues.

Mol	Chain	Analysed	Favoured	Allowed	Outliers	Percentiles	
1	A	287/347 (83%)	283 (99%)	4 (1%)	0	100	100

There are no Ramachandran outliers to report.

5.3.2 Protein sidechains ⓘ

In the following table, the Percentiles column shows the percent sidechain outliers of the chain as a percentile score with respect to all X-ray entries followed by that with respect to entries of similar resolution.

The Analysed column shows the number of residues for which the sidechain conformation was analysed, and the total number of residues.

Mol	Chain	Analysed	Rotameric	Outliers	Percentiles	
1	A	260/309 (84%)	242 (93%)	18 (7%)	19	18

All (18) residues with a non-rotameric sidechain are listed below:

Mol	Chain	Res	Type
1	A	537	THR
1	A	538	ARG
1	A	543	LEU
1	A	580	THR
1	A	595	LEU
1	A	604	LYS
1	A	658	ARG
1	A	680	ILE
1	A	690	LEU
1	A	706	ILE
1	A	708	GLU
1	A	725	LEU
1	A	759	LEU
1	A	784	THR
1	A	811	ASN
1	A	828	LEU
1	A	832	LEU
1	A	858	GLU

Some sidechains can be flipped to improve hydrogen bonding and reduce clashes. There are no such sidechains identified.

5.3.3 RNA ⓘ

There are no RNA molecules in this entry.

5.4 Non-standard residues in protein, DNA, RNA chains [i](#)

There are no non-standard protein/DNA/RNA residues in this entry.

5.5 Carbohydrates [i](#)

There are no carbohydrates in this entry.

5.6 Ligand geometry [i](#)

Of 3 ligands modelled in this entry, 2 are monoatomic - leaving 1 for Mogul analysis.

In the following table, the Counts columns list the number of bonds (or angles) for which Mogul statistics could be retrieved, the number of bonds (or angles) that are observed in the model and the number of bonds (or angles) that are defined in the chemical component dictionary. The Link column lists molecule types, if any, to which the group is linked. The Z score for a bond length (or angle) is the number of standard deviations the observed value is removed from the expected value. A bond length (or angle) with $|Z| > 2$ is considered an outlier worth inspection. RMSZ is the root-mean-square of all Z scores of the bond lengths (or angles).

Mol	Type	Chain	Res	Link	Bond lengths			Bond angles		
					Counts	RMSZ	$\# Z > 2$	Counts	RMSZ	$\# Z > 2$
2	5BB	A	901	-	37,37,37	1.71	4 (10%)	41,51,51	3.57	15 (36%)

In the following table, the Chirals column lists the number of chiral outliers, the number of chiral centers analysed, the number of these observed in the model and the number defined in the chemical component dictionary. Similar counts are reported in the Torsion and Rings columns. '-' means no outliers of that kind were identified.

Mol	Type	Chain	Res	Link	Chirals	Torsions	Rings
2	5BB	A	901	-	-	0/27/37/37	0/3/3/3

All (4) bond length outliers are listed below:

Mol	Chain	Res	Type	Atoms	Z	Observed(Å)	Ideal(Å)
2	A	901	5BB	BR-CBC	2.03	1.94	1.89
2	A	901	5BB	OAE-SBI	3.36	1.47	1.43
2	A	901	5BB	SBI-NBH	4.10	1.69	1.63
2	A	901	5BB	OAD-CBF	6.70	1.40	1.24

All (15) bond angle outliers are listed below:

Mol	Chain	Res	Type	Atoms	Z	Observed($^{\circ}$)	Ideal($^{\circ}$)
2	A	901	5BB	OAE-SBI-OAF	-6.49	108.27	119.47
2	A	901	5BB	CAU-NBH-SBI	-5.18	107.15	117.12
2	A	901	5BB	CBC-CBF-NAX	-4.31	119.40	124.00
2	A	901	5BB	NAX-CBE-NAW	-2.62	121.19	125.37
2	A	901	5BB	OAY-CAL-CAB	2.11	114.56	108.05
2	A	901	5BB	CAT-NBG-CAS	2.72	113.10	109.53
2	A	901	5BB	CAL-OAY-CBA	3.13	123.86	118.01
2	A	901	5BB	OAF-SBI-NBH	4.12	110.76	106.69
2	A	901	5BB	CAC-NBG-CAT	4.60	117.81	110.63
2	A	901	5BB	CBF-NAX-CBE	4.72	120.87	116.23
2	A	901	5BB	CAC-NBG-CAS	7.10	121.70	110.63
2	A	901	5BB	CAV-NBH-SBI	7.34	131.24	117.12
2	A	901	5BB	CAT-CAV-NBH	8.09	115.59	109.02
2	A	901	5BB	OAE-SBI-NBH	8.65	115.23	106.69
2	A	901	5BB	CAS-CAU-NBH	8.90	116.25	109.02

There are no chirality outliers.

There are no torsion outliers.

There are no ring outliers.

No monomer is involved in short contacts.

5.7 Other polymers [i](#)

There are no such residues in this entry.

5.8 Polymer linkage issues [i](#)

There are no chain breaks in this entry.

6 Fit of model and data [i](#)

6.1 Protein, DNA and RNA chains [i](#)

In the following table, the column labelled ‘#RSRZ> 2’ contains the number (and percentage) of RSRZ outliers, followed by percent RSRZ outliers for the chain as percentile scores relative to all X-ray entries and entries of similar resolution. The OWAB column contains the minimum, median, 95th percentile and maximum values of the occupancy-weighted average B-factor per residue. The column labelled ‘Q< 0.9’ lists the number of (and percentage) of residues with an average occupancy less than 0.9.

Mol	Chain	Analysed	<RSRZ>	#RSRZ>2	OWAB(Å ²)	Q<0.9
1	A	292/347 (84%)	0.14	17 (5%) 26 29	24, 36, 58, 84	0

All (17) RSRZ outliers are listed below:

Mol	Chain	Res	Type	RSRZ
1	A	536	GLU	6.4
1	A	662	ASN	4.6
1	A	538	ARG	4.6
1	A	535	GLU	4.2
1	A	811	ASN	4.0
1	A	739	ILE	3.6
1	A	745	ASN	3.1
1	A	674	GLN	3.0
1	A	742	ASN	3.0
1	A	676	TYR	2.9
1	A	738	LEU	2.9
1	A	741	LYS	2.7
1	A	788	ASP	2.5
1	A	744	PHE	2.3
1	A	787	PHE	2.2
1	A	737	GLU	2.1
1	A	743	GLN	2.0

6.2 Non-standard residues in protein, DNA, RNA chains [i](#)

There are no non-standard protein/DNA/RNA residues in this entry.

6.3 Carbohydrates [i](#)

There are no carbohydrates in this entry.

6.4 Ligands [i](#)

In the following table, the Atoms column lists the number of modelled atoms in the group and the number defined in the chemical component dictionary. LLDF column lists the quality of electron density of the group with respect to its neighbouring residues in protein, DNA or RNA chains. The B-factors column lists the minimum, median, 95th percentile and maximum values of B factors of atoms in the group. The column labelled 'Q< 0.9' lists the number of atoms with occupancy less than 0.9.

Mol	Type	Chain	Res	Atoms	RSCC	RSR	LLDF	B-factors(\AA^2)	Q<0.9
2	5BB	A	901	35/35	0.92	0.16	0.47	36,43,58,59	0
4	MG	A	903	1/1	0.98	0.07	-0.79	33,33,33,33	0
3	ZN	A	902	1/1	0.99	0.04	-2.20	38,38,38,38	0

6.5 Other polymers [i](#)

There are no such residues in this entry.