



# Full wwPDB X-ray Structure Validation Report ⓘ

Feb 1, 2016 – 09:26 AM GMT

PDB ID : 3IG6  
Title : Low molecular weight human Urokinase type Plasminogen activator 2-[6-(3'-Aminomethyl-biphenyl-3-yloxy)-4-(3-dimethylamino-pyrrolidin-1-yl)-3,5-difluoro-pyridin-2-yloxy]-4-dimethylamino-benzoic acid complex  
Authors : Adler, M.; Whitlow, M.  
Deposited on : 2009-07-27  
Resolution : 1.83 Å(reported)

This is a Full wwPDB X-ray Structure Validation Report for a publicly released PDB entry.  
We welcome your comments at [validation@mail.wwpdb.org](mailto:validation@mail.wwpdb.org)  
A user guide is available at  
<http://wwpdb.org/validation/2016/XrayValidationReportHelp>  
with specific help available everywhere you see the ⓘ symbol.

---

The following versions of software and data (see [references ⓘ](#)) were used in the production of this report:

MolProbity : 4.02b-467  
Mogul : 1.7 (RC4), CSD as536be (2015)  
Xtriage (Phenix) : 1.9-1692  
EDS : rb-20026688  
Percentile statistics : 20151230.v01 (using entries in the PDB archive December 30th 2015)  
Refmac : 5.8.0135  
CCP4 : 6.5.0  
Ideal geometry (proteins) : Engh & Huber (2001)  
Ideal geometry (DNA, RNA) : Parkinson et al. (1996)  
Validation Pipeline (wwPDB-VP) : trunk26865

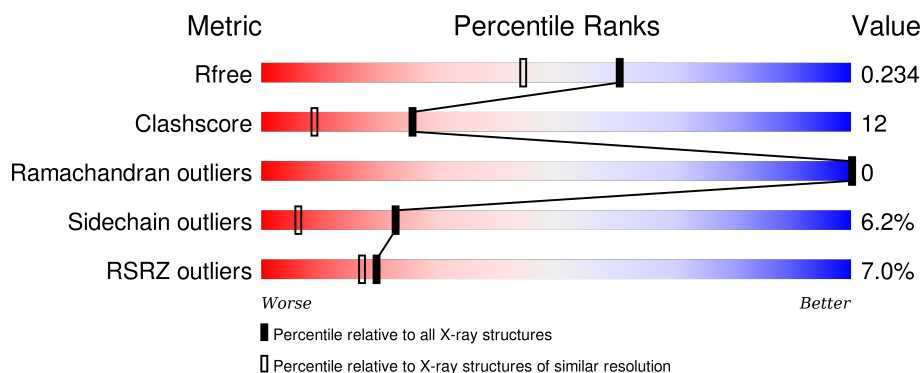
# 1 Overall quality at a glance

The following experimental techniques were used to determine the structure:

## *X-RAY DIFFRACTION*

The reported resolution of this entry is 1.83 Å.

Percentile scores (ranging between 0-100) for global validation metrics of the entry are shown in the following graphic. The table shows the number of entries on which the scores are based.



Metric	Whole archive (#Entries)	Similar resolution (#Entries, resolution range(Å))
$R_{free}$	91344	2634 (1.86-1.82)
Clashscore	102246	2862 (1.86-1.82)
Ramachandran outliers	100387	2831 (1.86-1.82)
Sidechain outliers	100360	2832 (1.86-1.82)
RSRZ outliers	91569	2639 (1.86-1.82)

The table below summarises the geometric issues observed across the polymeric chains and their fit to the electron density. The red, orange, yellow and green segments on the lower bar indicate the fraction of residues that contain outliers for  $\geq 3$ , 2, 1 and 0 types of geometric quality criteria. A grey segment represents the fraction of residues that are not modelled. The numeric value for each fraction is indicated below the corresponding segment, with a dot representing fractions  $\leq 5\%$ . The upper red bar (where present) indicates the fraction of residues that have poor fit to the electron density. The numeric value is given above the bar.

Mol	Chain	Length	Quality of chain
1	A	23	<div> <div>4%</div> <div>9%</div> <div>87%</div> </div>
1	C	23	<div> <div>13%</div> <div>26%</div> <div>13%</div> <div>61%</div> </div>
2	B	253	<div> <div>6%</div> <div>70%</div> <div>23%</div> <div>• •</div> </div>
2	D	253	<div> <div>6%</div> <div>77%</div> <div>17%</div> <div>• •</div> </div>

## 2 Entry composition [i](#)

There are 5 unique types of molecules in this entry. The entry contains 4259 atoms, of which 0 are hydrogens and 0 are deuteriums.

In the tables below, the ZeroOcc column contains the number of atoms modelled with zero occupancy, the AltConf column contains the number of residues with at least one atom in alternate conformation and the Trace column contains the number of residues modelled with at most 2 atoms.

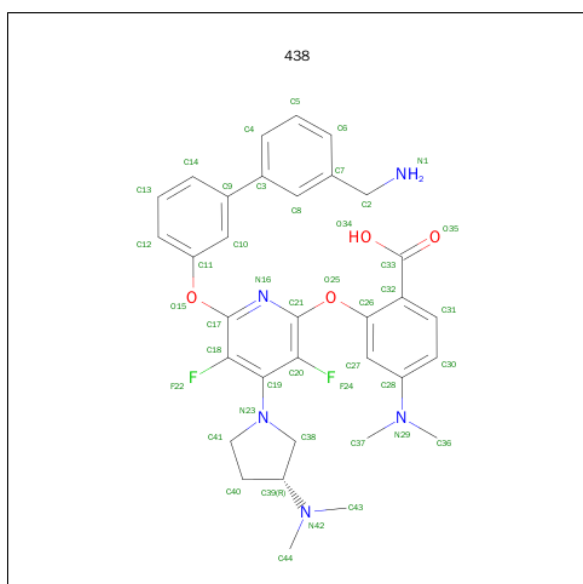
- Molecule 1 is a protein called Urokinase-type plasminogen activator.

Mol	Chain	Residues	Atoms					ZeroOcc	AltConf	Trace
1	A	3	Total	C	N	O	S	0	0	0
			19	10	4	4	1			
1	C	9	Total	C	N	O	S	0	0	0
			68	44	12	11	1			

- Molecule 2 is a protein called Urokinase-type plasminogen activator.

Mol	Chain	Residues	Atoms					ZeroOcc	AltConf	Trace
2	B	245	Total	C	N	O	S	0	0	0
			1933	1219	338	360	16			
2	D	243	Total	C	N	O	S	0	0	0
			1919	1212	333	358	16			

- Molecule 3 is 2-[(6-{[3'-(AMINOMETHYL)BIPHENYL-3-YL]OXY}-4-[(3R)-3-(DIMETHYLAMINO)PYRROLIDIN-1-YL]-3,5-DIFLUOROPYRIDIN-2-YL)OXY]-4-(DIMETHYLAMINO)BENZOIC ACID (three-letter code: 438) (formula: C<sub>33</sub>H<sub>35</sub>F<sub>2</sub>N<sub>5</sub>O<sub>4</sub>).



Mol	Chain	Residues	Atoms					ZeroOcc	AltConf
3	B	1	Total	C	F	N	O	0	0
			44	33	2	5	4		
3	D	1	Total	C	F	N	O	0	0
			44	33	2	5	4		

- Molecule 4 is PHOSPHATE ION (three-letter code: PO4) (formula: O<sub>4</sub>P).



Mol	Chain	Residues	Atoms			ZeroOcc	AltConf
4	D	1	Total	O	P	0	0
			5	4	1		

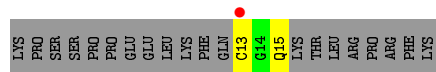
- Molecule 5 is water.

Mol	Chain	Residues	Atoms		ZeroOcc	AltConf
5	B	108	Total	O	0	0
			108	108		
5	C	1	Total	O	0	0
			1	1		
5	D	118	Total	O	0	0
			118	118		

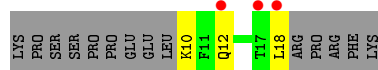
### 3 Residue-property plots

These plots are drawn for all protein, RNA and DNA chains in the entry. The first graphic for a chain summarises the proportions of errors displayed in the second graphic. The second graphic shows the sequence view annotated by issues in geometry and electron density. Residues are color-coded according to the number of geometric quality criteria for which they contain at least one outlier: green = 0, yellow = 1, orange = 2 and red = 3 or more. A red dot above a residue indicates a poor fit to the electron density ( $RSRZ > 2$ ). Stretches of 2 or more consecutive residues without any outlier are shown as a green connector. Residues present in the sample, but not in the model, are shown in grey.

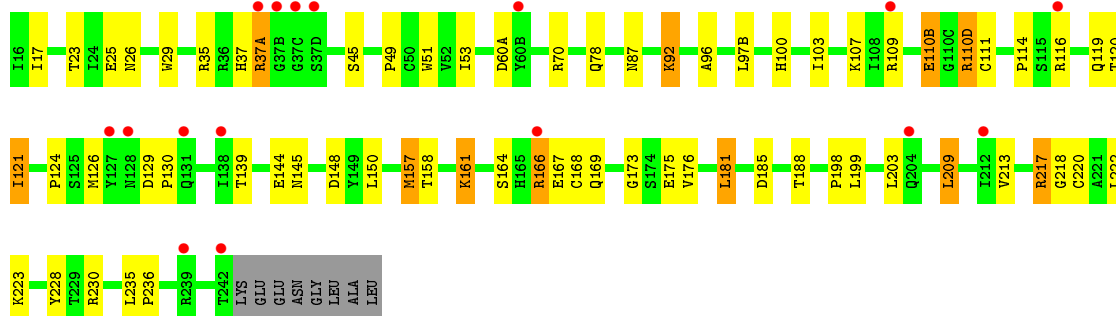
- Molecule 1: Urokinase-type plasminogen activator



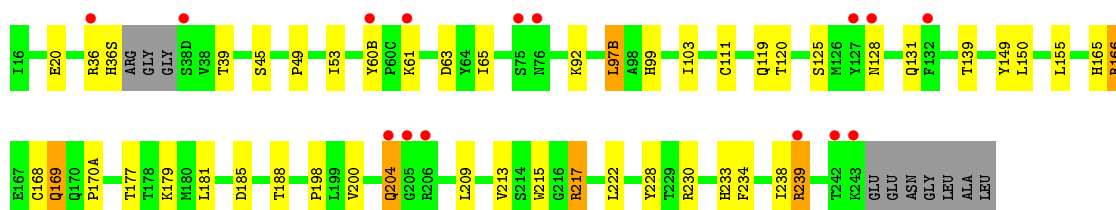
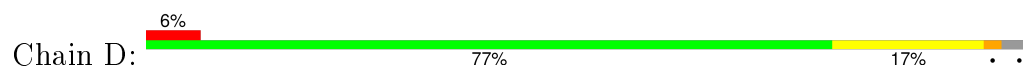
- Molecule 1: Urokinase-type plasminogen activator



- Molecule 2: Urokinase-type plasminogen activator



- Molecule 2: Urokinase-type plasminogen activator



## 4 Data and refinement statistics

Property	Value	Source
Space group	P 1 2 1	Depositor
Cell constants a, b, c, $\alpha$ , $\beta$ , $\gamma$	70.86Å 52.29Å 72.58Å 90.00° 90.23° 90.00°	Depositor
Resolution (Å)	19.83 – 1.83 27.51 – 1.80	Depositor EDS
% Data completeness (in resolution range)	90.4 (19.83-1.83) 91.3 (27.51-1.80)	Depositor EDS
$R_{merge}$	(Not available)	Depositor
$R_{sym}$	0.05	Depositor
$\langle I/\sigma(I) \rangle$ <sup>1</sup>	0.55 (at 1.79Å)	Xtriage
Refinement program	CNX 2005	Depositor
R, $R_{free}$	0.197 , 0.228 0.203 , 0.234	Depositor DCC
$R_{free}$ test set	1771 reflections (4.12%)	DCC
Wilson B-factor (Å <sup>2</sup> )	17.9	Xtriage
Anisotropy	0.317	Xtriage
Bulk solvent $k_{sol}$ (e/Å <sup>3</sup> ), $B_{sol}$ (Å <sup>2</sup> )	0.41 , 58.2	EDS
Estimated twinning fraction	0.008 for l,k,-h 0.028 for h,-k,-l 0.021 for l,-k,h	Xtriage
L-test for twinning <sup>2</sup>	$\langle  L  \rangle = 0.48$ , $\langle L^2 \rangle = 0.31$	Xtriage
Outliers	0 of 47497 reflections	Xtriage
$F_o, F_c$ correlation	0.94	EDS
Total number of atoms	4259	wwPDB-VP
Average B, all atoms (Å <sup>2</sup> )	22.0	wwPDB-VP

Xtriage's analysis on translational NCS is as follows: *The largest off-origin peak in the Patterson function is 6.29% of the height of the origin peak. No significant pseudotranslation is detected.*

<sup>1</sup>Intensities estimated from amplitudes.

<sup>2</sup>Theoretical values of  $\langle |L| \rangle$ ,  $\langle L^2 \rangle$  for acentric reflections are 0.5, 0.375 respectively for untwinned datasets, and 0.333, 0.2 for perfectly twinned datasets.

## 5 Model quality [i](#)

### 5.1 Standard geometry [i](#)

Bond lengths and bond angles in the following residue types are not validated in this section: PO4, 438

The Z score for a bond length (or angle) is the number of standard deviations the observed value is removed from the expected value. A bond length (or angle) with  $|Z| > 5$  is considered an outlier worth inspection. RMSZ is the root-mean-square of all Z scores of the bond lengths (or angles).

Mol	Chain	Bond lengths		Bond angles	
		RMSZ	$\# Z  > 5$	RMSZ	$\# Z  > 5$
1	A	0.21	0/18	0.35	0/22
1	C	0.26	0/68	0.46	0/88
2	B	0.26	0/1982	0.47	0/2686
2	D	0.27	0/1967	0.48	0/2666
All	All	0.27	0/4035	0.47	0/5462

There are no bond length outliers.

There are no bond angle outliers.

There are no chirality outliers.

There are no planarity outliers.

### 5.2 Too-close contacts [i](#)

In the following table, the Non-H and H(model) columns list the number of non-hydrogen atoms and hydrogen atoms in the chain respectively. The H(added) column lists the number of hydrogen atoms added and optimized by MolProbity. The Clashes column lists the number of clashes within the asymmetric unit, whereas Symm-Clashes lists symmetry related clashes.

Mol	Chain	Non-H	H(model)	H(added)	Clashes	Symm-Clashes
1	A	19	0	14	2	0
1	C	68	0	69	5	0
2	B	1933	0	1879	56	0
2	D	1919	0	1861	43	0
3	B	44	0	34	5	0
3	D	44	0	34	2	0
4	D	5	0	0	0	0
5	B	108	0	0	5	0
5	C	1	0	0	0	0

*Continued on next page...*

*Continued from previous page...*

Mol	Chain	Non-H	H(model)	H(added)	Clashes	Symm-Clashes
5	D	118	0	0	2	1
All	All	4259	0	3891	99	1

The all-atom clashscore is defined as the number of clashes found per 1000 atoms (including hydrogen atoms). The all-atom clashscore for this structure is 12.

All (99) close contacts within the same asymmetric unit are listed below, sorted by their clash magnitude.

Atom-1	Atom-2	Interatomic distance (Å)	Clash overlap (Å)
2:B:37(A):ARG:HG3	2:D:170(A):PRO:HB3	1.33	1.07
2:B:150:LEU:HD21	3:D:401:438:H41	1.63	0.77
1:C:12:GLN:H	2:D:119:GLN:HE22	1.35	0.74
2:B:97(B):LEU:HD23	2:B:175:GLU:HG2	1.68	0.74
2:B:130:PRO:HG3	2:B:203:LEU:HD21	1.71	0.72
2:D:166:ARG:H	2:D:166:ARG:HD2	1.59	0.67
1:A:15:GLN:HB2	2:B:114:PRO:HB3	1.76	0.67
1:C:12:GLN:H	2:D:119:GLN:NE2	1.93	0.67
2:D:238:ILE:HG22	2:D:239:ARG:HH11	1.61	0.65
2:D:53:ILE:HD11	2:D:103:ILE:HD11	1.78	0.65
2:B:37(A):ARG:HG3	2:D:170(A):PRO:CB	2.21	0.64
2:B:126:MET:HG2	2:B:235:LEU:HD12	1.80	0.64
2:D:111:CYS:HB2	5:D:710:HOH:O	1.98	0.63
2:B:53:ILE:HD11	2:B:103:ILE:HD11	1.83	0.61
2:B:78:GLN:CD	2:B:78:GLN:H	2.03	0.61
2:B:166:ARG:HD3	2:B:167:GLU:N	2.15	0.60
2:D:213:VAL:HG22	2:D:228:TYR:HE2	1.67	0.59
2:B:37:HIS:HD2	2:B:37(A):ARG:HH12	1.51	0.59
2:B:126:MET:CG	2:B:235:LEU:HD12	2.33	0.59
2:B:181:LEU:HD12	2:B:181:LEU:C	2.24	0.58
2:D:217:ARG:C	2:D:217:ARG:HD3	2.24	0.58
2:D:177:THR:OG1	2:D:179:LYS:HG2	2.04	0.58
1:C:18:LEU:HD23	1:C:18:LEU:O	2.05	0.57
2:D:181:LEU:HD22	2:D:230:ARG:HA	1.86	0.57
2:B:70:ARG:HG3	5:B:690:HOH:O	2.04	0.57
2:D:185:ASP:HB2	2:D:188:THR:HG22	1.85	0.57
2:B:45:SER:OG	2:B:198:PRO:HB3	2.05	0.56
2:D:239:ARG:N	2:D:239:ARG:HD2	2.20	0.55
2:B:157:MET:HG2	2:B:158:THR:N	2.21	0.55
2:B:23:THR:H	2:B:26:ASN:HD22	1.54	0.55
2:D:166:ARG:H	2:D:166:ARG:CD	2.20	0.54
2:B:222:LEU:HD23	2:D:61:LYS:HE2	1.89	0.54

*Continued on next page...*



*Continued from previous page...*

Atom-1	Atom-2	Interatomic distance (Å)	Clash overlap (Å)
2:B:29:TRP:CB	2:B:121:ILE:HG13	2.37	0.54
2:B:29:TRP:HB2	2:B:121:ILE:HG13	1.89	0.54
2:B:37:HIS:CD2	2:B:37(A):ARG:HH12	2.26	0.54
2:B:129:ASP:OD1	2:B:230:ARG:HD2	2.07	0.54
2:B:97(B):LEU:O	3:B:400:438:H44A	2.08	0.53
2:D:213:VAL:HG22	2:D:228:TYR:CE2	2.43	0.53
2:B:223:LYS:NZ	2:B:223:LYS:HB3	2.23	0.53
2:B:139:THR:HG22	2:B:198:PRO:HG2	1.92	0.52
2:D:165:HIS:O	2:D:169:GLN:HG2	2.11	0.51
2:D:181:LEU:HD23	2:D:228:TYR:O	2.10	0.51
2:D:181:LEU:HD23	2:D:181:LEU:H	1.75	0.51
2:B:17:ILE:HD13	2:B:144:GLU:C	2.31	0.51
2:B:161:LYS:HE3	5:B:808:HOH:O	2.10	0.51
3:B:400:438:H43B	2:D:92:LYS:O	2.12	0.50
2:B:181:LEU:HD11	2:B:199:LEU:CD2	2.41	0.50
2:D:125:SER:H	2:D:128:ASN:ND2	2.10	0.50
2:D:36(S):HIS:HE1	2:D:39:THR:OG1	1.94	0.50
1:A:13:CYS:HA	2:B:120:THR:OG1	2.12	0.49
2:B:37(A):ARG:CZ	2:B:37(A):ARG:H	2.26	0.49
2:B:169:GLN:O	2:B:173:GLY:HA2	2.13	0.49
2:D:165:HIS:HD2	5:D:635:HOH:O	1.96	0.47
2:D:99:HIS:HD2	2:D:215:TRP:HB3	1.79	0.47
2:B:96:ALA:HB1	3:B:400:438:H43	1.95	0.47
2:B:109:ARG:HD3	5:B:699:HOH:O	2.13	0.47
2:B:124:PRO:HD3	2:B:209:LEU:O	2.15	0.46
2:D:45:SER:OG	2:D:198:PRO:HB3	2.16	0.46
2:D:217:ARG:HE	3:D:401:438:H38	1.79	0.46
2:D:166:ARG:O	2:D:169:GLN:HG3	2.16	0.46
2:B:220:CYS:SG	3:B:400:438:H14	2.56	0.45
2:D:125:SER:OG	2:D:128:ASN:HB3	2.16	0.45
3:B:400:438:H40A	2:D:92:LYS:O	2.15	0.45
2:D:36:ARG:HD3	2:D:65:ILE:HD11	1.97	0.45
2:B:185:ASP:HB2	2:B:188:THR:HG22	1.97	0.45
2:B:45:SER:HB3	2:B:121:ILE:HD11	1.97	0.45
2:B:213:VAL:HG22	2:B:228:TYR:HE2	1.83	0.44
2:B:169:GLN:HG2	2:B:176:VAL:HG23	1.98	0.44
2:D:149:TYR:CD2	2:D:150:LEU:HD13	2.52	0.44
2:D:165:HIS:HB3	2:D:166:ARG:HE	1.81	0.44
2:D:49:PRO:O	2:D:111:CYS:HB3	2.18	0.44
2:B:164:SER:OG	2:B:166:ARG:HD2	2.18	0.44
2:D:238:ILE:HG22	2:D:239:ARG:NH1	2.30	0.44

*Continued on next page...*

Continued from previous page...

Atom-1	Atom-2	Interatomic distance (Å)	Clash overlap (Å)
2:B:218:GLY:HA3	2:B:222:LEU:HD13	1.99	0.44
1:C:18:LEU:C	1:C:18:LEU:HD23	2.38	0.43
2:D:139:THR:HG22	2:D:155:LEU:HD11	2.00	0.43
2:D:230:ARG:CZ	2:D:233:HIS:HB2	2.48	0.43
2:B:92:LYS:HD2	5:B:721:HOH:O	2.19	0.43
2:B:100:HIS:HE1	5:B:775:HOH:O	2.01	0.43
2:D:119:GLN:HE21	2:D:120:THR:H	1.66	0.43
2:B:235:LEU:HB2	2:B:236:PRO:HD3	2.01	0.43
2:D:97(B):LEU:HD22	2:D:215:TRP:CE3	2.54	0.43
1:C:10:LYS:HA	1:C:10:LYS:HD2	1.88	0.42
2:B:97(B):LEU:HD11	2:B:217:ARG:HD2	2.00	0.42
2:B:25:GLU:HG2	2:B:116:ARG:NH1	2.34	0.42
2:B:110(B):GLU:HG3	2:B:110(D):ARG:NE	2.34	0.42
2:B:213:VAL:HG22	2:B:228:TYR:CE2	2.54	0.42
2:B:25:GLU:HG2	2:B:116:ARG:HH11	1.85	0.42
2:D:198:PRO:HB2	2:D:200:VAL:HG23	2.01	0.42
2:D:217:ARG:HH11	2:D:222:LEU:HD22	1.86	0.41
2:B:51:TRP:CE2	2:B:107:LYS:HD3	2.55	0.41
2:B:51:TRP:CZ2	2:B:107:LYS:HD3	2.56	0.41
2:B:49:PRO:O	2:B:111:CYS:HB3	2.20	0.41
2:B:78:GLN:CD	2:B:78:GLN:N	2.72	0.41
2:B:145:ASN:HB3	2:B:148:ASP:OD2	2.21	0.41
2:D:234:PHE:O	2:D:238:ILE:HG13	2.21	0.41
2:B:157:MET:CG	2:B:158:THR:N	2.84	0.40
2:D:204:GLN:N	2:D:204:GLN:OE1	2.55	0.40
2:B:29:TRP:HA	2:B:119:GLN:O	2.21	0.40

All (1) symmetry-related close contacts are listed below. The label for Atom-2 includes the symmetry operator and encoded unit-cell translations to be applied.

Atom-1	Atom-2	Interatomic distance (Å)	Clash overlap (Å)
5:D:859:HOH:O	5:D:859:HOH:O[2_556]	1.08	1.12

## 5.3 Torsion angles [i](#)

### 5.3.1 Protein backbone [i](#)

In the following table, the Percentiles column shows the percent Ramachandran outliers of the chain as a percentile score with respect to all X-ray entries followed by that with respect to entries of similar resolution.

The Analysed column shows the number of residues for which the backbone conformation was analysed, and the total number of residues.

Mol	Chain	Analysed	Favoured	Allowed	Outliers	Percentiles	
1	A	1/23 (4%)	0	1 (100%)	0	100	100
1	C	7/23 (30%)	7 (100%)	0	0	100	100
2	B	243/253 (96%)	235 (97%)	8 (3%)	0	100	100
2	D	239/253 (94%)	233 (98%)	6 (2%)	0	100	100
All	All	490/552 (89%)	475 (97%)	15 (3%)	0	100	100

There are no Ramachandran outliers to report.

### 5.3.2 Protein sidechains ⓘ

In the following table, the Percentiles column shows the percent sidechain outliers of the chain as a percentile score with respect to all X-ray entries followed by that with respect to entries of similar resolution.

The Analysed column shows the number of residues for which the sidechain conformation was analysed, and the total number of residues.

Mol	Chain	Analysed	Rotameric	Outliers	Percentiles	
1	A	2/22 (9%)	2 (100%)	0	100	100
1	C	7/22 (32%)	7 (100%)	0	100	100
2	B	214/220 (97%)	199 (93%)	15 (7%)	19	4
2	D	213/220 (97%)	201 (94%)	12 (6%)	26	8
All	All	436/484 (90%)	409 (94%)	27 (6%)	23	6

All (27) residues with a non-rotameric sidechain are listed below:

Mol	Chain	Res	Type
2	B	35	ARG
2	B	37(A)	ARG
2	B	60(A)	ASP
2	B	87	ASN
2	B	92	LYS
2	B	110(B)	GLU
2	B	110(D)	ARG
2	B	121	ILE
2	B	157	MET
2	B	161	LYS

*Continued on next page...*

*Continued from previous page...*

Mol	Chain	Res	Type
2	B	166	ARG
2	B	168	CYS
2	B	181	LEU
2	B	209	LEU
2	B	217	ARG
2	D	20	GLU
2	D	60(B)	TYR
2	D	63	ASP
2	D	97(B)	LEU
2	D	131	GLN
2	D	166	ARG
2	D	168	CYS
2	D	169	GLN
2	D	204	GLN
2	D	209	LEU
2	D	217	ARG
2	D	239	ARG

Some sidechains can be flipped to improve hydrogen bonding and reduce clashes. All (11) such sidechains are listed below:

Mol	Chain	Res	Type
2	B	26	ASN
2	B	37	HIS
2	B	74	ASN
2	B	76	ASN
2	B	87	ASN
2	B	192	GLN
2	D	36(S)	HIS
2	D	74	ASN
2	D	119	GLN
2	D	165	HIS
2	D	241	HIS

### 5.3.3 RNA ⓘ

There are no RNA molecules in this entry.

## 5.4 Non-standard residues in protein, DNA, RNA chains ⓘ

There are no non-standard protein/DNA/RNA residues in this entry.

## 5.5 Carbohydrates [i](#)

There are no carbohydrates in this entry.

## 5.6 Ligand geometry [i](#)

3 ligands are modelled in this entry.

In the following table, the Counts columns list the number of bonds (or angles) for which Mogul statistics could be retrieved, the number of bonds (or angles) that are observed in the model and the number of bonds (or angles) that are defined in the chemical component dictionary. The Link column lists molecule types, if any, to which the group is linked. The Z score for a bond length (or angle) is the number of standard deviations the observed value is removed from the expected value. A bond length (or angle) with  $|Z| > 2$  is considered an outlier worth inspection. RMSZ is the root-mean-square of all Z scores of the bond lengths (or angles).

Mol	Type	Chain	Res	Link	Bond lengths			Bond angles		
					Counts	RMSZ	$\# Z  > 2$	Counts	RMSZ	$\# Z  > 2$
3	438	B	400	-	44,48,48	1.91	18 (40%)	58,69,69	0.95	3 (5%)
3	438	D	401	-	44,48,48	1.97	17 (38%)	58,69,69	1.02	5 (8%)
4	PO4	D	450	-	4,4,4	1.13	0	6,6,6	0.27	0

In the following table, the Chirals column lists the number of chiral outliers, the number of chiral centers analysed, the number of these observed in the model and the number defined in the chemical component dictionary. Similar counts are reported in the Torsion and Rings columns. '-' means no outliers of that kind were identified.

Mol	Type	Chain	Res	Link	Chirals	Torsions	Rings
3	438	B	400	-	-	0/26/39/39	0/5/5/5
3	438	D	401	-	-	0/26/39/39	0/5/5/5
4	PO4	D	450	-	-	0/0/0/0	0/0/0/0

All (35) bond length outliers are listed below:

Mol	Chain	Res	Type	Atoms	Z	Observed(Å)	Ideal(Å)
3	B	400	438	C27-C26	2.03	1.42	1.38
3	B	400	438	C12-C11	2.04	1.42	1.38
3	D	401	438	C13-C14	2.07	1.43	1.38
3	D	401	438	C31-C30	2.15	1.42	1.38
3	B	400	438	C8-C7	2.15	1.43	1.39
3	D	401	438	C4-C3	2.16	1.43	1.39
3	B	400	438	C41-N23	2.16	1.50	1.47
3	D	401	438	C14-C9	2.21	1.44	1.39
3	B	400	438	C14-C9	2.22	1.44	1.39

*Continued on next page...*

*Continued from previous page...*

Mol	Chain	Res	Type	Atoms	Z	Observed(Å)	Ideal(Å)
3	B	400	438	C10-C9	2.25	1.43	1.39
3	B	400	438	C4-C3	2.25	1.44	1.39
3	B	400	438	C8-C3	2.32	1.44	1.39
3	B	400	438	C38-N23	2.40	1.49	1.46
3	B	400	438	C27-C28	2.45	1.43	1.39
3	D	401	438	C8-C3	2.49	1.44	1.39
3	D	401	438	C27-C26	2.49	1.43	1.38
3	D	401	438	C30-C28	2.50	1.44	1.39
3	D	401	438	C27-C28	2.51	1.44	1.39
3	B	400	438	C30-C28	2.55	1.44	1.39
3	D	401	438	C32-C26	2.63	1.44	1.40
3	D	401	438	C19-C18	2.65	1.43	1.39
3	D	401	438	C18-C17	2.67	1.41	1.38
3	D	401	438	C12-C11	2.68	1.44	1.38
3	D	401	438	C38-N23	2.73	1.50	1.46
3	B	400	438	C32-C26	2.75	1.45	1.40
3	D	401	438	C19-C20	2.78	1.43	1.39
3	B	400	438	C19-C18	2.86	1.43	1.39
3	B	400	438	C17-N16	2.97	1.36	1.32
3	B	400	438	C18-C17	3.00	1.42	1.38
3	B	400	438	C19-C20	3.02	1.44	1.39
3	D	401	438	C20-C21	3.06	1.42	1.38
3	B	400	438	C10-C11	3.28	1.44	1.38
3	B	400	438	C21-N16	3.73	1.37	1.32
3	D	401	438	C17-N16	3.78	1.37	1.32
3	D	401	438	C21-N16	4.11	1.38	1.32

All (8) bond angle outliers are listed below:

Mol	Chain	Res	Type	Atoms	Z	Observed(°)	Ideal(°)
3	D	401	438	C20-C21-N16	-2.45	119.61	122.34
3	B	400	438	C18-C17-N16	-2.29	119.79	122.34
3	D	401	438	C18-C17-N16	-2.05	120.06	122.34
3	D	401	438	C41-C40-C39	-2.01	99.35	103.35
3	D	401	438	C9-C10-C11	2.06	121.73	119.76
3	B	400	438	O15-C17-C18	2.23	120.53	117.76
3	D	401	438	C21-N16-C17	3.55	122.30	117.79
3	B	400	438	C21-N16-C17	3.64	122.42	117.79

There are no chirality outliers.

There are no torsion outliers.

There are no ring outliers.

2 monomers are involved in 7 short contacts:

Mol	Chain	Res	Type	Clashes	Symm-Clashes
3	B	400	438	5	0
3	D	401	438	2	0

## 5.7 Other polymers [i](#)

There are no such residues in this entry.

## 5.8 Polymer linkage issues [i](#)

There are no chain breaks in this entry.

## 6 Fit of model and data

### 6.1 Protein, DNA and RNA chains

In the following table, the column labelled ‘#RSRZ> 2’ contains the number (and percentage) of RSRZ outliers, followed by percent RSRZ outliers for the chain as percentile scores relative to all X-ray entries and entries of similar resolution. The OWAB column contains the minimum, median, 95<sup>th</sup> percentile and maximum values of the occupancy-weighted average B-factor per residue. The column labelled ‘Q< 0.9’ lists the number of (and percentage) of residues with an average occupancy less than 0.9.

Mol	Chain	Analysed	<RSRZ>	#RSRZ>2	OWAB(Å <sup>2</sup> )	Q<0.9
1	A	3/23 (13%)	2.65	1 (33%) 0 0	48, 48, 49, 50	0
1	C	9/23 (39%)	1.32	3 (33%) 0 0	23, 27, 47, 50	1 (11%)
2	B	245/253 (96%)	0.49	16 (6%) 22 19	10, 21, 38, 52	1 (0%)
2	D	243/253 (96%)	0.29	15 (6%) 24 21	9, 19, 36, 51	1 (0%)
All	All	500/552 (90%)	0.42	35 (7%) 19 17	9, 21, 38, 52	3 (0%)

All (35) RSRZ outliers are listed below:

Mol	Chain	Res	Type	RSRZ
2	B	37(C)	GLY	8.2
2	B	204	GLN	6.9
1	C	18	LEU	5.8
2	B	37(D)	SER	5.6
1	A	13	CYS	5.1
2	D	206	ARG	4.9
2	B	37(B)	GLY	4.1
2	D	76	ASN	3.6
2	D	128	ASN	3.5
2	D	204	GLN	3.3
2	D	60(B)	TYR	3.0
2	D	132	PHE	2.9
2	B	127	TYR	2.9
2	B	239	ARG	2.8
2	B	60(B)	TYR	2.8
1	C	17	THR	2.8
2	D	36	ARG	2.7
2	B	242	THR	2.7
2	D	243	LYS	2.7
2	B	37(A)	ARG	2.6
2	B	116	ARG	2.6

*Continued on next page...*



*Continued from previous page...*

Mol	Chain	Res	Type	RSRZ
2	B	166	ARG	2.5
2	D	239	ARG	2.5
2	B	128	ASN	2.4
2	D	242	THR	2.3
2	D	75	SER	2.3
2	D	205	GLY	2.3
2	D	61	LYS	2.2
2	B	212	ILE	2.1
2	B	131	GLN	2.1
2	B	109	ARG	2.1
2	D	38(D)	SER	2.1
2	D	127	TYR	2.0
1	C	12	GLN	2.0
2	B	138	ILE	2.0

## 6.2 Non-standard residues in protein, DNA, RNA chains [i](#)

There are no non-standard protein/DNA/RNA residues in this entry.

## 6.3 Carbohydrates [i](#)

There are no carbohydrates in this entry.

## 6.4 Ligands [i](#)

In the following table, the Atoms column lists the number of modelled atoms in the group and the number defined in the chemical component dictionary. LLDF column lists the quality of electron density of the group with respect to its neighbouring residues in protein, DNA or RNA chains. The B-factors column lists the minimum, median, 95<sup>th</sup> percentile and maximum values of B factors of atoms in the group. The column labelled 'Q< 0.9' lists the number of atoms with occupancy less than 0.9.

Mol	Type	Chain	Res	Atoms	RSCC	RSR	LLDF	B-factors(Å <sup>2</sup> )	Q<0.9
3	438	D	401	44/44	0.80	0.20	1.73	13,40,52,54	0
3	438	B	400	44/44	0.93	0.13	0.49	12,15,21,25	0
4	PO4	D	450	5/5	0.97	0.10	-0.84	22,26,27,28	0

## 6.5 Other polymers [i](#)

There are no such residues in this entry.