



# Full wwPDB X-ray Structure Validation Report ⓘ

Jan 31, 2016 – 08:02 PM GMT

PDB ID : 1IHI  
Title : Crystal Structure of Human Type III 3-alpha-Hydroxysteroid Dehydrogenase/Bile Acid Binding Protein (AKR1C2) Complexed with NADP+ and Ursodeoxycholate  
Authors : Jin, Y.; Stayrook, S.E.; Albert, R.H.; Palackal, N.T.; Penning, T.M.; Lewis, M.  
Deposited on : 2001-04-19  
Resolution : 3.00 Å(reported)

This is a Full wwPDB X-ray Structure Validation Report for a publicly released PDB entry.  
We welcome your comments at [validation@mail.wwpdb.org](mailto:validation@mail.wwpdb.org)  
A user guide is available at  
<http://wwpdb.org/validation/2016/XrayValidationReportHelp>  
with specific help available everywhere you see the ⓘ symbol.

---

The following versions of software and data (see [references ⓘ](#)) were used in the production of this report:

MolProbity : 4.02b-467  
Mogul : 1.7 (RC4), CSD as536be (2015)  
Xtriage (Phenix) : 1.9-1692  
EDS : rb-20026688  
Percentile statistics : 20151230.v01 (using entries in the PDB archive December 30th 2015)  
Refmac : 5.8.0135  
CCP4 : 6.5.0  
Ideal geometry (proteins) : Engh & Huber (2001)  
Ideal geometry (DNA, RNA) : Parkinson et al. (1996)  
Validation Pipeline (wwPDB-VP) : trunk26865

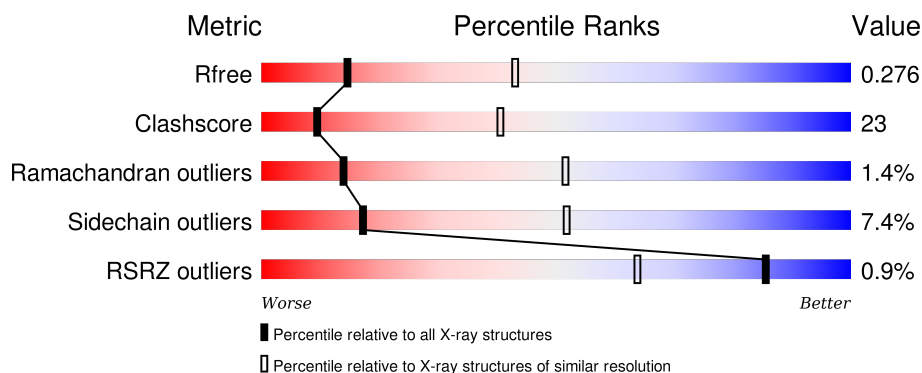
# 1 Overall quality at a glance

The following experimental techniques were used to determine the structure:

## *X-RAY DIFFRACTION*

The reported resolution of this entry is 3.00 Å.

Percentile scores (ranging between 0-100) for global validation metrics of the entry are shown in the following graphic. The table shows the number of entries on which the scores are based.



Metric	Whole archive (#Entries)	Similar resolution (#Entries, resolution range(Å))
$R_{free}$	91344	1578 (3.00-3.00)
Clashscore	102246	1912 (3.00-3.00)
Ramachandran outliers	100387	1853 (3.00-3.00)
Sidechain outliers	100360	1856 (3.00-3.00)
RSRZ outliers	91569	1592 (3.00-3.00)

The table below summarises the geometric issues observed across the polymeric chains and their fit to the electron density. The red, orange, yellow and green segments on the lower bar indicate the fraction of residues that contain outliers for  $\geq 3$ , 2, 1 and 0 types of geometric quality criteria. A grey segment represents the fraction of residues that are not modelled. The numeric value for each fraction is indicated below the corresponding segment, with a dot representing fractions  $\leq 5\%$ . The upper red bar (where present) indicates the fraction of residues that have poor fit to the electron density. The numeric value is given above the bar.

Mol	Chain	Length	Quality of chain
1	A	323	<div> <div></div> <div>54%</div> <div>40%</div> <div>5%</div> </div>
1	B	323	<div> <div></div> <div>58%</div> <div>37%</div> <div>5%</div> </div>

The following table lists non-polymeric compounds, carbohydrate monomers and non-standard residues in protein, DNA, RNA chains that are outliers for geometric or electron-density-fit criteria:

Mol	Type	Chain	Res	Chirality	Geometry	Clashes	Electron density
3	IU5	A	326	X	-	-	-
3	IU5	B	327	X	-	-	-

## 2 Entry composition [i](#)

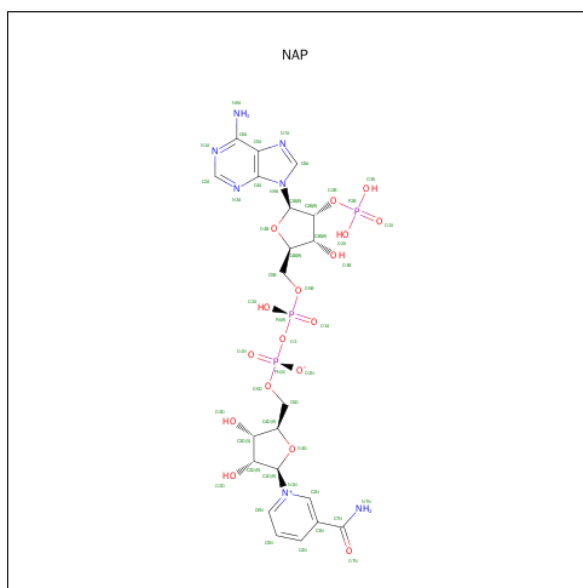
There are 3 unique types of molecules in this entry. The entry contains 5272 atoms, of which 0 are hydrogens and 0 are deuteriums.

In the tables below, the ZeroOcc column contains the number of atoms modelled with zero occupancy, the AltConf column contains the number of residues with at least one atom in alternate conformation and the Trace column contains the number of residues modelled with at most 2 atoms.

- Molecule 1 is a protein called 3-ALPHA-HYDROXYSTEROID DEHYDROGENASE.

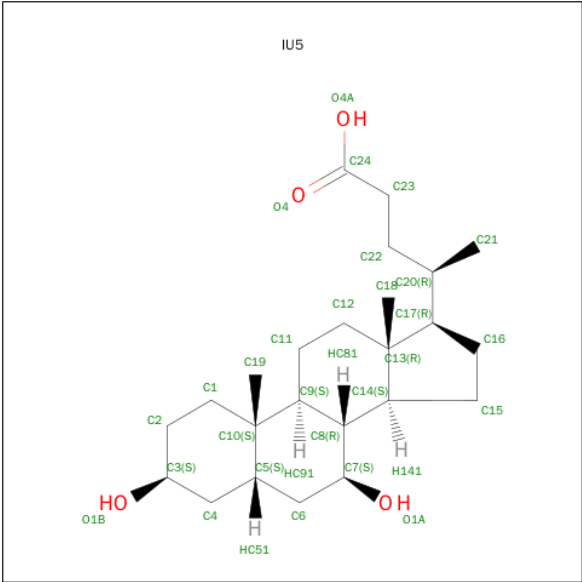
Mol	Chain	Residues	Atoms					ZeroOcc	AltConf	Trace
1	A	320	Total	C	N	O	S	0	0	0
			2560	1640	442	467	11			
1	B	320	Total	C	N	O	S	0	0	0
			2560	1640	442	467	11			

- Molecule 2 is NADP NICOTINAMIDE-ADENINE-DINUCLEOTIDE PHOSPHATE (three-letter code: NAP) (formula:  $C_{21}H_{28}N_7O_{17}P_3$ ).



Mol	Chain	Residues	Atoms					ZeroOcc	AltConf
2	A	1	Total	C	N	O	P	0	0
			48	21	7	17	3		
2	B	1	Total	C	N	O	P	0	0
			48	21	7	17	3		

- Molecule 3 is ISO-URSODEOXYCHOLIC ACID (three-letter code: IU5) (formula:  $C_{24}H_{40}O_4$ ).

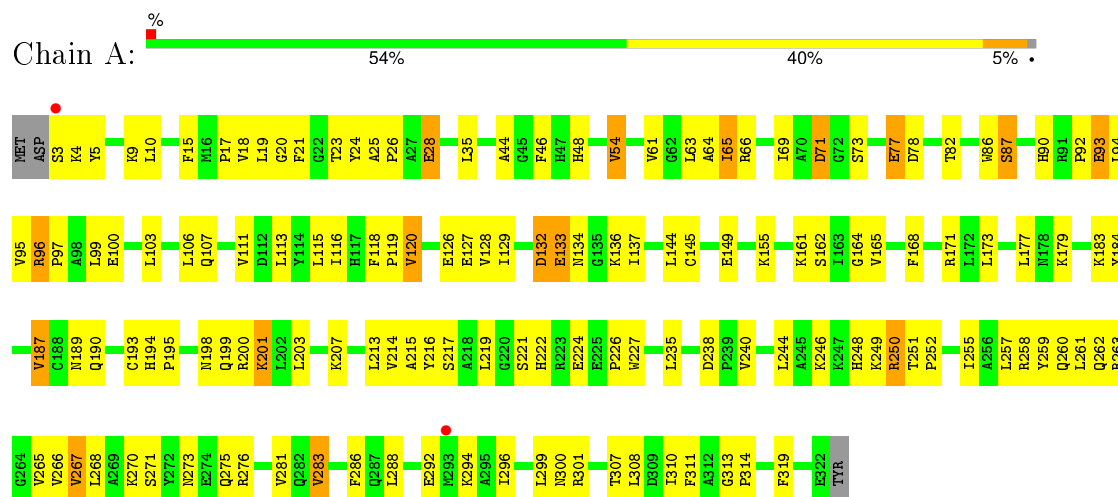


Mol	Chain	Residues	Atoms			ZeroOcc	AltConf
3	A	1	Total	C	O	0	0
			28	24	4		
3	B	1	Total	C	O	0	0
			28	24	4		

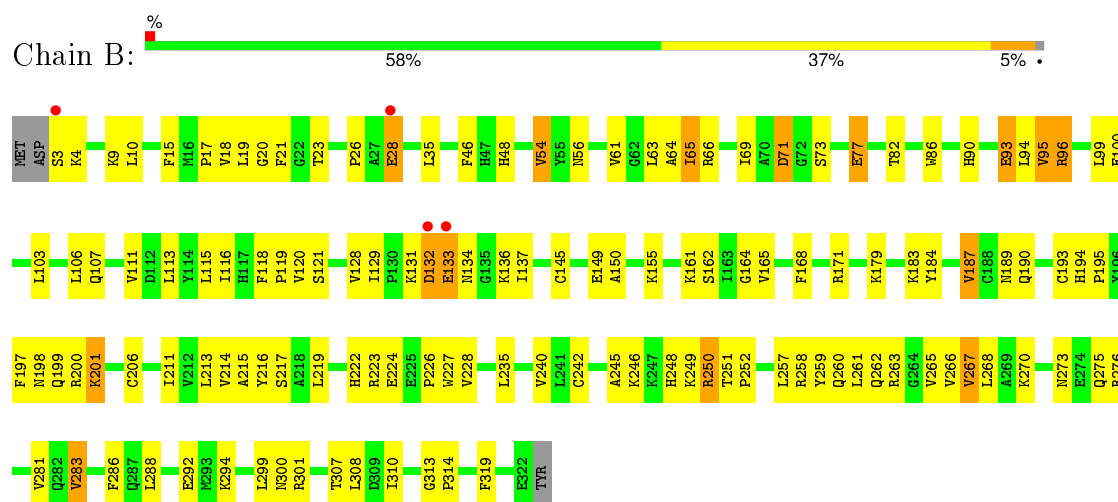
### 3 Residue-property plots

These plots are drawn for all protein, RNA and DNA chains in the entry. The first graphic for a chain summarises the proportions of errors displayed in the second graphic. The second graphic shows the sequence view annotated by issues in geometry and electron density. Residues are color-coded according to the number of geometric quality criteria for which they contain at least one outlier: green = 0, yellow = 1, orange = 2 and red = 3 or more. A red dot above a residue indicates a poor fit to the electron density ( $RSRZ > 2$ ). Stretches of 2 or more consecutive residues without any outlier are shown as a green connector. Residues present in the sample, but not in the model, are shown in grey.

#### • Molecule 1: 3-ALPHA-HYDROXYSTEROID DEHYDROGENASE



#### • Molecule 1: 3-ALPHA-HYDROXYSTEROID DEHYDROGENASE



## 4 Data and refinement statistics

Property	Value	Source
Space group	H 3 2	Depositor
Cell constants a, b, c, $\alpha$ , $\beta$ , $\gamma$	144.09 Å   144.09 Å   202.77 Å 90.00°   90.00°   120.00°	Depositor
Resolution (Å)	8.00 – 3.00 19.98 – 3.00	Depositor EDS
% Data completeness (in resolution range)	98.0 (8.00-3.00) 100.0 (19.98-3.00)	Depositor EDS
$R_{merge}$	0.05	Depositor
$R_{sym}$	(Not available)	Depositor
$\langle I/\sigma(I) \rangle$ <sup>1</sup>	15.17 (at 2.98 Å)	Xtriage
Refinement program	CNS 1.0	Depositor
R, $R_{free}$	0.223   ,   0.278 0.227   ,   0.276	Depositor DCC
$R_{free}$ test set	1538 reflections (9.91%)	DCC
Wilson B-factor (Å <sup>2</sup> )	29.8	Xtriage
Anisotropy	0.343	Xtriage
Bulk solvent $k_{sol}$ (e/Å <sup>3</sup> ), $B_{sol}$ (Å <sup>2</sup> )	0.36   ,   29.7	EDS
Estimated twinning fraction	No twinning to report.	Xtriage
L-test for twinning <sup>2</sup>	$\langle  L  \rangle = 0.49$ , $\langle L^2 \rangle = 0.33$	Xtriage
Outliers	0 of 16383 reflections	Xtriage
$F_o, F_c$ correlation	0.88	EDS
Total number of atoms	5272	wwPDB-VP
Average B, all atoms (Å <sup>2</sup> )	15.0	wwPDB-VP

Xtriage's analysis on translational NCS is as follows: *The largest off-origin peak in the Patterson function is 2.89% of the height of the origin peak. No significant pseudotranslation is detected.*

<sup>1</sup>Intensities estimated from amplitudes.

<sup>2</sup>Theoretical values of  $\langle |L| \rangle$ ,  $\langle L^2 \rangle$  for acentric reflections are 0.5, 0.375 respectively for untwinned datasets, and 0.333, 0.2 for perfectly twinned datasets.

## 5 Model quality [i](#)

### 5.1 Standard geometry [i](#)

Bond lengths and bond angles in the following residue types are not validated in this section: NAP, IU5

The Z score for a bond length (or angle) is the number of standard deviations the observed value is removed from the expected value. A bond length (or angle) with  $|Z| > 5$  is considered an outlier worth inspection. RMSZ is the root-mean-square of all Z scores of the bond lengths (or angles).

Mol	Chain	Bond lengths		Bond angles	
		RMSZ	$\# Z  > 5$	RMSZ	$\# Z  > 5$
1	A	0.41	0/2620	0.65	2/3549 (0.1%)
1	B	0.41	0/2620	0.65	2/3549 (0.1%)
All	All	0.41	0/5240	0.65	4/7098 (0.1%)

There are no bond length outliers.

All (4) bond angle outliers are listed below:

Mol	Chain	Res	Type	Atoms	Z	Observed(°)	Ideal(°)
1	A	116	ILE	N-CA-C	-5.15	97.10	111.00
1	A	319	PHE	N-CA-C	5.13	124.86	111.00
1	B	116	ILE	N-CA-C	-5.13	97.15	111.00
1	B	319	PHE	N-CA-C	5.10	124.78	111.00

There are no chirality outliers.

There are no planarity outliers.

### 5.2 Too-close contacts [i](#)

In the following table, the Non-H and H(model) columns list the number of non-hydrogen atoms and hydrogen atoms in the chain respectively. The H(added) column lists the number of hydrogen atoms added and optimized by MolProbity. The Clashes column lists the number of clashes within the asymmetric unit, whereas Symm-Clashes lists symmetry related clashes.

Mol	Chain	Non-H	H(model)	H(added)	Clashes	Symm-Clashes
1	A	2560	0	2574	120	0
1	B	2560	0	2574	118	0
2	A	48	0	23	4	0
2	B	48	0	24	3	0
3	A	28	0	39	1	0

*Continued on next page...*



*Continued from previous page...*

Mol	Chain	Non-H	H(model)	H(added)	Clashes	Symm-Clashes
3	B	28	0	39	1	0
All	All	5272	0	5273	238	0

The all-atom clashscore is defined as the number of clashes found per 1000 atoms (including hydrogen atoms). The all-atom clashscore for this structure is 23.

All (238) close contacts within the same asymmetric unit are listed below, sorted by their clash magnitude.

Atom-1	Atom-2	Interatomic distance (Å)	Clash overlap (Å)
1:B:258:ARG:HE	1:B:262:GLN:HE21	1.03	1.03
1:B:246:LYS:HE2	1:B:246:LYS:HA	1.40	1.02
1:A:246:LYS:HA	1:A:246:LYS:HE2	1.40	1.01
1:B:273:ASN:HD22	1:B:276:ARG:H	1.12	0.93
1:A:258:ARG:HE	1:A:262:GLN:HE21	1.12	0.93
1:B:273:ASN:HD21	1:B:275:GLN:HB3	1.32	0.91
1:B:222:HIS:HD2	1:B:224:GLU:HB2	1.35	0.89
1:A:222:HIS:HD2	1:A:224:GLU:HB2	1.36	0.88
1:A:273:ASN:HD22	1:A:276:ARG:H	1.20	0.84
1:B:262:GLN:HE22	1:B:288:LEU:H	1.25	0.84
1:A:219:LEU:HD21	1:A:257:LEU:HD13	1.61	0.82
1:A:262:GLN:HE22	1:A:288:LEU:H	1.29	0.81
1:B:10:LEU:HB3	1:B:187:VAL:CG2	2.10	0.81
1:A:273:ASN:HD21	1:A:275:GLN:HB3	1.47	0.80
1:A:10:LEU:HB3	1:A:187:VAL:CG2	2.12	0.79
1:B:10:LEU:HB3	1:B:187:VAL:HG22	1.65	0.79
1:A:132:ASP:HB2	1:A:136:LYS:HB2	1.62	0.79
1:B:136:LYS:HE2	1:B:136:LYS:HA	1.63	0.79
1:B:219:LEU:HD21	1:B:257:LEU:HD13	1.65	0.78
1:B:77:GLU:CD	1:B:77:GLU:H	1.87	0.77
1:B:132:ASP:HB2	1:B:136:LYS:HB2	1.67	0.76
1:B:118:PHE:CE1	1:B:308:LEU:HD12	2.21	0.75
1:A:136:LYS:HA	1:A:136:LYS:HE2	1.68	0.74
1:B:273:ASN:ND2	1:B:276:ARG:H	1.85	0.74
1:B:222:HIS:CD2	1:B:224:GLU:HB2	2.22	0.74
1:A:77:GLU:H	1:A:77:GLU:CD	1.90	0.73
1:B:195:PRO:HG2	1:B:235:LEU:HD11	1.70	0.72
1:A:257:LEU:HB3	1:A:283:VAL:HG11	1.73	0.71
1:A:222:HIS:CD2	1:A:224:GLU:HB2	2.24	0.71
1:A:249:LYS:O	1:A:250:ARG:HD2	1.90	0.71
1:A:258:ARG:HE	1:A:262:GLN:NE2	1.86	0.71
1:A:10:LEU:HB3	1:A:187:VAL:HG22	1.73	0.70

*Continued on next page...*

*Continued from previous page...*

Atom-1	Atom-2	Interatomic distance (Å)	Clash overlap (Å)
1:B:259:TYR:CZ	1:B:263:ARG:HD2	2.27	0.70
1:B:198:ASN:O	1:B:200:ARG:N	2.25	0.69
1:B:258:ARG:HE	1:B:262:GLN:NE2	1.85	0.69
1:A:118:PHE:CE1	1:A:308:LEU:HD12	2.28	0.69
1:A:259:TYR:CZ	1:A:263:ARG:HD2	2.27	0.69
1:A:198:ASN:O	1:A:200:ARG:N	2.26	0.68
1:B:257:LEU:HB3	1:B:283:VAL:HG11	1.76	0.68
1:B:155:LYS:HE3	1:B:161:LYS:O	1.95	0.67
1:B:257:LEU:HB3	1:B:283:VAL:CG1	2.25	0.67
1:A:128:VAL:HG12	1:A:129:ILE:HG13	1.77	0.67
1:B:198:ASN:HB2	1:B:263:ARG:NH2	2.11	0.66
1:A:273:ASN:ND2	1:A:276:ARG:H	1.92	0.66
1:A:226:PRO:HG2	1:A:227:TRP:CD1	2.31	0.65
1:B:249:LYS:O	1:B:250:ARG:HD2	1.97	0.65
1:A:257:LEU:HB3	1:A:283:VAL:CG1	2.26	0.65
1:B:133:GLU:C	1:B:134:ASN:HD22	2.00	0.65
1:B:26:PRO:HB2	1:B:28:GLU:HG2	1.78	0.65
1:A:26:PRO:HB2	1:A:28:GLU:HG2	1.79	0.64
1:B:61:VAL:O	1:B:65:ILE:HG23	1.96	0.64
1:B:273:ASN:ND2	1:B:275:GLN:HB3	2.10	0.64
1:A:61:VAL:O	1:A:65:ILE:HG23	1.96	0.64
1:B:260:GLN:NE2	1:B:263:ARG:HE	1.95	0.63
1:B:28:GLU:H	1:B:28:GLU:CD	2.00	0.63
1:A:195:PRO:HG2	1:A:235:LEU:HD11	1.81	0.63
1:B:128:VAL:HG12	1:B:129:ILE:HG13	1.80	0.62
1:B:260:GLN:HG2	1:B:267:VAL:HG13	1.80	0.62
1:A:270:LYS:HD3	1:A:270:LYS:C	2.20	0.62
1:A:200:ARG:NH2	1:A:201:LYS:HD2	2.15	0.62
1:A:35:LEU:HD12	1:A:64:ALA:HB2	1.81	0.62
1:A:260:GLN:HG2	1:A:267:VAL:HG13	1.80	0.61
1:A:198:ASN:HB2	1:A:263:ARG:NH2	2.16	0.61
1:A:155:LYS:HE3	1:A:161:LYS:O	2.01	0.61
1:B:35:LEU:HD12	1:B:64:ALA:HB2	1.81	0.61
1:A:258:ARG:NE	1:A:262:GLN:HE21	1.93	0.61
1:B:198:ASN:HB2	1:B:263:ARG:CZ	2.31	0.60
1:B:270:LYS:C	1:B:270:LYS:HD3	2.22	0.60
1:A:28:GLU:CD	1:A:28:GLU:H	2.05	0.60
1:B:20:GLY:O	1:B:268:LEU:HA	2.02	0.60
1:B:119:PRO:HG3	1:B:168:PHE:CD1	2.37	0.60
1:A:19:LEU:HG	1:A:46:PHE:CE1	2.37	0.59
1:B:299:LEU:O	1:B:301:ARG:HG3	2.01	0.59

*Continued on next page...*

*Continued from previous page...*

Atom-1	Atom-2	Interatomic distance (Å)	Clash overlap (Å)
1:B:19:LEU:HG	1:B:46:PHE:CE1	2.37	0.59
1:B:240:VAL:CG2	1:B:299:LEU:HD11	2.33	0.59
1:A:198:ASN:HB2	1:A:263:ARG:CZ	2.33	0.59
1:A:260:GLN:NE2	1:A:263:ARG:HE	2.01	0.58
1:A:240:VAL:CG2	1:A:299:LEU:HD11	2.33	0.58
1:A:71:ASP:HB3	1:A:73:SER:OG	2.03	0.58
1:A:20:GLY:O	1:A:268:LEU:HA	2.04	0.57
1:A:65:ILE:HG13	1:A:66:ARG:N	2.18	0.57
1:B:226:PRO:HG2	1:B:227:TRP:CD1	2.39	0.57
1:B:65:ILE:O	1:B:69:ILE:HG13	2.04	0.56
1:A:3:SER:O	1:A:4:LYS:HB2	2.06	0.56
1:A:54:VAL:HB	3:A:326:IU5:H183	1.88	0.56
1:A:54:VAL:HG12	1:A:128:VAL:HG11	1.87	0.56
1:B:99:LEU:O	1:B:103:LEU:HG	2.06	0.55
1:A:119:PRO:HG3	1:A:168:PHE:CD1	2.41	0.55
1:A:183:LYS:HE2	1:A:184:TYR:OH	2.06	0.55
1:A:240:VAL:CG2	1:A:299:LEU:HD21	2.36	0.55
1:A:299:LEU:O	1:A:301:ARG:HG3	2.06	0.55
1:B:276:ARG:HG2	2:B:325:NAP:C6A	2.37	0.55
1:B:200:ARG:NH2	1:B:201:LYS:HD2	2.21	0.55
1:A:106:LEU:O	1:A:107:GLN:HB2	2.07	0.55
1:B:132:ASP:C	1:B:134:ASN:H	2.11	0.54
1:A:96:ARG:HD3	1:A:100:GLU:OE1	2.08	0.54
1:B:82:THR:OG1	1:B:113:LEU:HD23	2.08	0.53
1:A:93:GLU:H	1:A:93:GLU:CD	2.10	0.53
1:A:198:ASN:O	1:A:198:ASN:ND2	2.41	0.53
1:B:18:VAL:HA	1:B:266:VAL:HG22	1.91	0.53
1:B:71:ASP:HB3	1:B:73:SER:OG	2.06	0.53
1:B:250:ARG:HG3	1:B:250:ARG:HH11	1.73	0.53
1:A:200:ARG:HH22	1:A:201:LYS:HD2	1.74	0.53
1:B:77:GLU:CD	1:B:77:GLU:N	2.60	0.53
1:B:54:VAL:HG12	1:B:128:VAL:HG11	1.91	0.53
1:A:165:VAL:O	1:A:189:ASN:HA	2.09	0.52
1:A:132:ASP:C	1:A:134:ASN:H	2.13	0.52
1:B:183:LYS:HE2	1:B:184:TYR:OH	2.09	0.52
1:A:307:THR:O	1:A:308:LEU:C	2.48	0.52
1:B:65:ILE:HG13	1:B:66:ARG:N	2.24	0.52
1:A:137:ILE:HD12	1:A:310:ILE:O	2.10	0.52
1:B:106:LEU:O	1:B:107:GLN:HB2	2.10	0.52
1:A:276:ARG:HG2	2:A:324:NAP:C6A	2.40	0.51
1:B:165:VAL:O	1:B:189:ASN:HA	2.10	0.51

*Continued on next page...*

*Continued from previous page...*

Atom-1	Atom-2	Interatomic distance (Å)	Clash overlap (Å)
1:A:82:THR:OG1	1:A:113:LEU:HD23	2.10	0.51
1:B:3:SER:O	1:B:4:LYS:HB2	2.10	0.51
1:A:77:GLU:CD	1:A:77:GLU:N	2.61	0.50
1:A:96:ARG:HD3	1:A:100:GLU:CD	2.32	0.50
1:A:240:VAL:HG22	1:A:299:LEU:HD21	1.94	0.50
1:B:145:CYS:HB3	1:B:179:LYS:HD2	1.94	0.50
1:A:248:HIS:HE2	1:A:292:GLU:CD	2.15	0.50
1:A:9:LYS:HG3	1:A:15:PHE:CZ	2.47	0.50
1:A:248:HIS:O	1:A:250:ARG:HD3	2.12	0.49
1:A:86:TRP:NE1	1:A:128:VAL:HG13	2.26	0.49
1:B:54:VAL:HB	3:B:327:IU5:H183	1.93	0.49
1:B:19:LEU:HG	1:B:46:PHE:HE1	1.77	0.49
1:A:99:LEU:O	1:A:103:LEU:HG	2.13	0.49
1:B:136:LYS:HA	1:B:136:LYS:CE	2.40	0.49
1:A:19:LEU:HG	1:A:46:PHE:HE1	1.77	0.49
1:B:103:LEU:HD21	1:B:111:VAL:HG13	1.95	0.49
1:B:213:LEU:C	1:B:213:LEU:HD23	2.33	0.49
1:A:115:LEU:HA	1:A:164:GLY:O	2.13	0.49
1:A:10:LEU:HB3	1:A:187:VAL:HG21	1.94	0.48
1:B:194:HIS:HB2	1:B:195:PRO:HD2	1.95	0.48
1:A:213:LEU:O	1:A:265:VAL:HG13	2.14	0.48
1:B:137:ILE:HD12	1:B:310:ILE:O	2.14	0.48
1:A:219:LEU:HD21	1:A:257:LEU:CD1	2.40	0.48
1:B:307:THR:O	1:B:308:LEU:C	2.51	0.48
1:A:262:GLN:HE22	1:A:288:LEU:N	2.06	0.48
1:A:271:SER:HA	2:A:324:NAP:O1X	2.14	0.48
1:B:246:LYS:HA	1:B:246:LYS:CE	2.26	0.48
1:B:265:VAL:HG12	1:B:266:VAL:N	2.29	0.47
1:A:65:ILE:O	1:A:69:ILE:HG13	2.14	0.47
1:B:240:VAL:CG2	1:B:299:LEU:HD21	2.43	0.47
1:A:250:ARG:HG2	1:A:286:PHE:CE2	2.50	0.47
1:B:119:PRO:HG3	1:B:168:PHE:CE1	2.49	0.47
1:A:113:LEU:HA	1:A:162:SER:O	2.15	0.47
1:A:251:THR:HB	1:A:252:PRO:HD2	1.96	0.47
1:B:9:LYS:HG3	1:B:15:PHE:CZ	2.50	0.47
1:B:132:ASP:C	1:B:134:ASN:N	2.68	0.47
1:B:118:PHE:CZ	1:B:308:LEU:HD12	2.50	0.47
1:B:265:VAL:CG1	1:B:266:VAL:N	2.78	0.47
1:B:193:CYS:HB3	1:B:215:ALA:CB	2.45	0.47
1:B:198:ASN:ND2	1:B:198:ASN:O	2.48	0.46
1:B:96:ARG:HD3	1:B:100:GLU:CD	2.36	0.46

*Continued on next page...*

*Continued from previous page...*

Atom-1	Atom-2	Interatomic distance (Å)	Clash overlap (Å)
1:A:194:HIS:HB2	1:A:195:PRO:HD2	1.96	0.46
1:A:119:PRO:HG3	1:A:168:PHE:CE1	2.50	0.46
1:B:115:LEU:HA	1:B:164:GLY:O	2.16	0.46
1:B:213:LEU:O	1:B:265:VAL:HG13	2.15	0.46
1:A:103:LEU:HD21	1:A:111:VAL:HG13	1.98	0.46
1:A:18:VAL:HA	1:A:266:VAL:HG22	1.96	0.46
1:B:260:GLN:HG3	1:B:265:VAL:HG11	1.98	0.46
1:A:21:PHE:HE1	1:A:23:THR:HG22	1.81	0.46
1:B:251:THR:HB	1:B:252:PRO:HD2	1.98	0.46
1:B:281:VAL:O	1:B:281:VAL:HG12	2.14	0.46
1:A:281:VAL:O	1:A:281:VAL:HG12	2.16	0.45
1:A:270:LYS:O	1:A:270:LYS:HD3	2.16	0.45
1:A:250:ARG:HH11	1:A:250:ARG:HG3	1.79	0.45
1:B:28:GLU:CD	1:B:28:GLU:N	2.70	0.45
1:B:248:HIS:O	1:B:250:ARG:HD3	2.16	0.45
1:B:240:VAL:HG22	1:B:299:LEU:HD21	1.99	0.45
1:B:90:HIS:HD2	1:B:121:SER:OG	2.00	0.44
1:B:262:GLN:HE22	1:B:288:LEU:N	2.04	0.44
1:A:183:LYS:HE2	1:A:184:TYR:CZ	2.52	0.44
1:A:193:CYS:HB3	1:A:215:ALA:CB	2.46	0.44
1:A:173:LEU:HD12	1:A:173:LEU:HA	1.85	0.44
1:B:86:TRP:NE1	1:B:128:VAL:HG13	2.33	0.44
1:B:95:VAL:HG21	1:B:150:ALA:HB3	2.00	0.44
1:A:133:GLU:C	1:A:134:ASN:HD22	2.20	0.44
1:A:213:LEU:HD23	1:A:213:LEU:C	2.38	0.44
1:B:17:PRO:HB2	1:B:48:HIS:HB2	2.00	0.44
1:B:131:LYS:HA	1:B:136:LYS:O	2.17	0.44
1:A:87:SER:HA	1:A:90:HIS:NE2	2.33	0.44
1:A:244:LEU:HB3	1:A:255:ILE:HD13	1.99	0.44
1:A:17:PRO:HB2	1:A:48:HIS:HB2	1.99	0.44
1:B:93:GLU:CD	1:B:93:GLU:H	2.22	0.44
1:A:145:CYS:HB3	1:A:179:LYS:HD2	1.99	0.43
1:A:221:SER:HA	2:A:324:NAP:O3	2.18	0.43
1:A:132:ASP:C	1:A:134:ASN:N	2.70	0.43
1:A:24:TYR:CG	1:A:25:ALA:N	2.86	0.43
1:B:219:LEU:HD21	1:B:257:LEU:CD1	2.43	0.43
1:B:270:LYS:O	2:B:325:NAP:H8A	2.18	0.43
1:A:177:LEU:HD23	1:A:177:LEU:HA	1.87	0.43
1:A:219:LEU:HB2	2:A:324:NAP:O1A	2.19	0.43
1:B:113:LEU:HA	1:B:162:SER:O	2.19	0.43
1:B:250:ARG:HG2	1:B:286:PHE:CE2	2.53	0.43

*Continued on next page...*

*Continued from previous page...*

Atom-1	Atom-2	Interatomic distance (Å)	Clash overlap (Å)
1:A:63:LEU:HD23	1:A:66:ARG:HH22	1.82	0.43
1:A:21:PHE:CE1	1:A:23:THR:HG22	2.53	0.43
1:A:273:ASN:ND2	1:A:275:GLN:HB3	2.23	0.43
1:B:248:HIS:HE2	1:B:292:GLU:CD	2.22	0.43
1:B:260:GLN:HG3	1:B:265:VAL:CG1	2.49	0.42
1:A:190:GLN:HA	1:A:214:VAL:O	2.18	0.42
1:B:165:VAL:HG11	1:B:168:PHE:CE2	2.53	0.42
1:B:242:CYS:O	1:B:245:ALA:HB3	2.18	0.42
1:B:10:LEU:HB3	1:B:187:VAL:HG21	1.97	0.42
1:B:200:ARG:HH22	1:B:201:LYS:HD2	1.85	0.42
1:B:21:PHE:HE1	1:B:23:THR:HG22	1.84	0.42
1:A:132:ASP:CB	1:A:136:LYS:HB2	2.41	0.42
1:A:195:PRO:HB3	1:A:296:ILE:CG2	2.50	0.42
1:B:94:LEU:HA	1:B:94:LEU:HD23	1.77	0.42
1:B:113:LEU:HD11	1:B:115:LEU:CD2	2.50	0.42
1:A:120:VAL:HG11	1:A:311:PHE:HB3	2.00	0.42
1:B:96:ARG:HD3	1:B:100:GLU:OE1	2.19	0.42
1:B:206:CYS:HB3	1:B:211:ILE:O	2.20	0.42
1:B:219:LEU:HB2	2:B:325:NAP:O1A	2.20	0.41
1:B:26:PRO:HG3	1:B:224:GLU:OE1	2.19	0.41
1:B:96:ARG:O	1:B:100:GLU:HG3	2.20	0.41
1:B:223:ARG:HA	1:B:228:VAL:HB	2.02	0.41
1:A:240:VAL:HG21	1:A:299:LEU:HD21	2.01	0.41
1:A:216:TYR:O	1:A:217:SER:HB2	2.19	0.41
1:B:63:LEU:HD23	1:B:66:ARG:HH22	1.84	0.41
1:B:190:GLN:HA	1:B:214:VAL:O	2.20	0.41
1:A:126:GLU:O	1:A:127:GLU:C	2.58	0.41
1:A:28:GLU:CD	1:A:28:GLU:N	2.72	0.41
1:A:65:ILE:HD12	1:A:69:ILE:HD11	2.02	0.41
1:A:118:PHE:CZ	1:A:308:LEU:HD12	2.56	0.41
1:A:144:LEU:HA	1:A:144:LEU:HD23	1.88	0.41
1:A:203:LEU:HD11	1:A:207:LYS:HE3	2.03	0.41
1:B:222:HIS:CD2	1:B:224:GLU:H	2.39	0.41
1:B:194:HIS:CE1	1:B:197:PHE:HB2	2.55	0.41
1:A:260:GLN:HG3	1:A:265:VAL:HG11	2.02	0.41
1:B:216:TYR:O	1:B:217:SER:HB2	2.21	0.41
1:B:260:GLN:CG	1:B:267:VAL:HG13	2.51	0.41
1:A:44:ALA:HB1	1:A:281:VAL:HG21	2.04	0.40
1:B:21:PHE:CE1	1:B:23:THR:HG22	2.56	0.40
1:A:5:TYR:OH	1:A:78:ASP:HA	2.22	0.40
1:A:238:ASP:OD2	1:A:240:VAL:HG22	2.21	0.40

*Continued on next page...*

*Continued from previous page...*

Atom-1	Atom-2	Interatomic distance (Å)	Clash overlap (Å)
1:A:94:LEU:O	1:A:97:PRO:HG2	2.22	0.40

There are no symmetry-related clashes.

## 5.3 Torsion angles [i](#)

### 5.3.1 Protein backbone [i](#)

In the following table, the Percentiles column shows the percent Ramachandran outliers of the chain as a percentile score with respect to all X-ray entries followed by that with respect to entries of similar resolution.

The Analysed column shows the number of residues for which the backbone conformation was analysed, and the total number of residues.

Mol	Chain	Analysed	Favoured	Allowed	Outliers	Percentiles	
1	A	318/323 (98%)	289 (91%)	24 (8%)	5 (2%)	12	48
1	B	318/323 (98%)	288 (91%)	26 (8%)	4 (1%)	15	53
All	All	636/646 (98%)	577 (91%)	50 (8%)	9 (1%)	14	51

All (9) Ramachandran outliers are listed below:

Mol	Chain	Res	Type
1	A	199	GLN
1	B	199	GLN
1	B	314	PRO
1	A	87	SER
1	A	314	PRO
1	B	313	GLY
1	A	95	VAL
1	A	313	GLY
1	B	95	VAL

### 5.3.2 Protein sidechains [i](#)

In the following table, the Percentiles column shows the percent sidechain outliers of the chain as a percentile score with respect to all X-ray entries followed by that with respect to entries of similar resolution.

The Analysed column shows the number of residues for which the sidechain conformation was

analysed, and the total number of residues.

Mol	Chain	Analysed	Rotameric	Outliers	Percentiles	
1	A	282/285 (99%)	261 (93%)	21 (7%)	17	52
1	B	282/285 (99%)	261 (93%)	21 (7%)	17	52
All	All	564/570 (99%)	522 (93%)	42 (7%)	17	52

All (42) residues with a non-rotameric sidechain are listed below:

Mol	Chain	Res	Type
1	A	28	GLU
1	A	54	VAL
1	A	65	ILE
1	A	71	ASP
1	A	77	GLU
1	A	92	PRO
1	A	93	GLU
1	A	96	ARG
1	A	120	VAL
1	A	132	ASP
1	A	133	GLU
1	A	149	GLU
1	A	171	ARG
1	A	187	VAL
1	A	201	LYS
1	A	250	ARG
1	A	261	LEU
1	A	267	VAL
1	A	283	VAL
1	A	294	LYS
1	A	300	ASN
1	B	28	GLU
1	B	54	VAL
1	B	56	ASN
1	B	65	ILE
1	B	71	ASP
1	B	77	GLU
1	B	93	GLU
1	B	96	ARG
1	B	120	VAL
1	B	132	ASP
1	B	133	GLU
1	B	149	GLU
1	B	171	ARG

*Continued on next page...*



*Continued from previous page...*

Mol	Chain	Res	Type
1	B	187	VAL
1	B	201	LYS
1	B	250	ARG
1	B	261	LEU
1	B	267	VAL
1	B	283	VAL
1	B	294	LYS
1	B	300	ASN

Some sidechains can be flipped to improve hydrogen bonding and reduce clashes. All (27) such sidechains are listed below:

Mol	Chain	Res	Type
1	A	6	GLN
1	A	14	HIS
1	A	48	HIS
1	A	56	ASN
1	A	57	ASN
1	A	90	HIS
1	A	105	ASN
1	A	134	ASN
1	A	178	ASN
1	A	198	ASN
1	A	260	GLN
1	A	262	GLN
1	A	273	ASN
1	A	300	ASN
1	B	6	GLN
1	B	14	HIS
1	B	48	HIS
1	B	56	ASN
1	B	90	HIS
1	B	105	ASN
1	B	134	ASN
1	B	178	ASN
1	B	198	ASN
1	B	260	GLN
1	B	262	GLN
1	B	273	ASN
1	B	300	ASN

### 5.3.3 RNA ⓘ

There are no RNA molecules in this entry.

## 5.4 Non-standard residues in protein, DNA, RNA chains ⓘ

There are no non-standard protein/DNA/RNA residues in this entry.

## 5.5 Carbohydrates ⓘ

There are no carbohydrates in this entry.

## 5.6 Ligand geometry ⓘ

4 ligands are modelled in this entry.

In the following table, the Counts columns list the number of bonds (or angles) for which Mogul statistics could be retrieved, the number of bonds (or angles) that are observed in the model and the number of bonds (or angles) that are defined in the chemical component dictionary. The Link column lists molecule types, if any, to which the group is linked. The Z score for a bond length (or angle) is the number of standard deviations the observed value is removed from the expected value. A bond length (or angle) with  $|Z| > 2$  is considered an outlier worth inspection. RMSZ is the root-mean-square of all Z scores of the bond lengths (or angles).

Mol	Type	Chain	Res	Link	Bond lengths			Bond angles		
					Counts	RMSZ	$\# Z  > 2$	Counts	RMSZ	$\# Z  > 2$
2	NAP	A	324	-	42,52,52	2.42	14 (33%)	54,80,80	2.04	13 (24%)
3	IU5	A	326	-	28,31,31	1.80	7 (25%)	46,49,49	1.45	6 (13%)
2	NAP	B	325	-	42,52,52	2.42	13 (30%)	54,80,80	2.02	13 (24%)
3	IU5	B	327	-	28,31,31	1.84	7 (25%)	46,49,49	1.46	6 (13%)

In the following table, the Chirals column lists the number of chiral outliers, the number of chiral centers analysed, the number of these observed in the model and the number defined in the chemical component dictionary. Similar counts are reported in the Torsion and Rings columns. '-' means no outliers of that kind were identified.

Mol	Type	Chain	Res	Link	Chirals	Torsions	Rings
2	NAP	A	324	-	-	0/27/67/67	0/5/5/5
3	IU5	A	326	-	1/1/11/11	0/7/70/70	0/4/4/4
2	NAP	B	325	-	-	0/27/67/67	0/5/5/5
3	IU5	B	327	-	1/1/11/11	0/7/70/70	0/4/4/4

All (41) bond length outliers are listed below:

Mol	Chain	Res	Type	Atoms	Z	Observed(Å)	Ideal(Å)
2	A	324	NAP	C3B-C4B	-9.16	1.28	1.53
2	B	325	NAP	C3B-C4B	-8.93	1.28	1.53
2	B	325	NAP	O2B-C2B	-4.48	1.30	1.44
2	A	324	NAP	O2B-C2B	-4.26	1.31	1.44
2	B	325	NAP	C3N-C7N	-2.83	1.46	1.50
2	A	324	NAP	P2B-O2X	-2.61	1.45	1.54
2	B	325	NAP	P2B-O2X	-2.60	1.45	1.54
2	A	324	NAP	C3N-C7N	-2.60	1.46	1.50
2	A	324	NAP	PA-O2A	-2.57	1.44	1.54
2	B	325	NAP	PA-O2A	-2.37	1.44	1.54
2	A	324	NAP	P2B-O3X	-2.10	1.47	1.54
3	A	326	IU5	C12-C11	2.05	1.57	1.53
3	B	327	IU5	C8-C9	2.09	1.57	1.53
2	A	324	NAP	C2A-N3A	2.14	1.36	1.32
2	B	325	NAP	O4B-C1B	2.17	1.43	1.41
3	A	326	IU5	C8-C7	2.26	1.57	1.53
3	B	327	IU5	C10-C9	2.35	1.60	1.56
2	A	324	NAP	O5B-C5B	2.38	1.54	1.44
2	B	325	NAP	C2A-N3A	2.39	1.36	1.32
3	A	326	IU5	C10-C9	2.39	1.60	1.56
2	B	325	NAP	O5B-C5B	2.54	1.55	1.44
2	B	325	NAP	C4N-C3N	2.58	1.43	1.39
2	A	324	NAP	C4N-C3N	2.60	1.43	1.39
3	B	327	IU5	C18-C13	2.66	1.59	1.54
3	A	326	IU5	C18-C13	2.67	1.59	1.54
3	B	327	IU5	C10-C5	2.70	1.60	1.55
3	A	326	IU5	C10-C5	2.73	1.60	1.55
2	A	324	NAP	O4B-C1B	2.77	1.44	1.41
3	B	327	IU5	C8-C7	2.79	1.58	1.53
3	A	326	IU5	C20-C17	2.81	1.59	1.54
3	B	327	IU5	C20-C17	2.83	1.59	1.54
2	A	324	NAP	C6N-N1N	3.14	1.43	1.35
2	B	325	NAP	C6N-N1N	3.15	1.43	1.35
2	A	324	NAP	C4A-N3A	3.41	1.40	1.35
3	B	327	IU5	C8-C14	3.48	1.60	1.53
2	B	325	NAP	C4A-N3A	3.51	1.40	1.35
3	A	326	IU5	C8-C14	3.62	1.61	1.53
2	A	324	NAP	C2N-C3N	4.54	1.45	1.39
2	A	324	NAP	O4B-C4B	4.63	1.55	1.45
2	B	325	NAP	O4B-C4B	4.81	1.56	1.45
2	B	325	NAP	C2N-C3N	4.89	1.46	1.39

All (38) bond angle outliers are listed below:

Mol	Chain	Res	Type	Atoms	Z	Observed(°)	Ideal(°)
2	A	324	NAP	N3A-C2A-N1A	-6.30	124.07	128.89
2	B	325	NAP	N3A-C2A-N1A	-6.13	124.20	128.89
2	B	325	NAP	C1B-N9A-C4A	-5.06	119.31	126.94
2	A	324	NAP	C1B-N9A-C4A	-4.92	119.52	126.94
2	A	324	NAP	C4B-O4B-C1B	-4.43	104.85	109.72
2	B	325	NAP	C4B-O4B-C1B	-4.43	104.85	109.72
3	A	326	IU5	C6-C5-C10	-4.11	108.12	112.66
3	B	327	IU5	C6-C5-C10	-4.07	108.17	112.66
2	B	325	NAP	C3N-C2N-N1N	-3.89	115.88	120.36
2	A	324	NAP	O7N-C7N-N7N	-3.88	117.14	122.59
2	A	324	NAP	C3N-C2N-N1N	-3.87	115.90	120.36
2	B	325	NAP	O7N-C7N-N7N	-3.72	117.36	122.59
3	A	326	IU5	C9-C8-C7	-3.60	107.67	111.92
3	B	327	IU5	C9-C8-C7	-3.59	107.68	111.92
3	B	327	IU5	C5-C4-C3	-2.83	108.70	112.91
3	B	327	IU5	C17-C13-C14	-2.81	96.79	100.09
3	A	326	IU5	C5-C4-C3	-2.76	108.81	112.91
3	A	326	IU5	C17-C13-C14	-2.71	96.91	100.09
3	B	327	IU5	C5-C6-C7	-2.52	111.62	114.44
3	A	326	IU5	C5-C6-C7	-2.49	111.66	114.44
2	B	325	NAP	P2B-O2B-C2B	-2.44	115.70	121.56
2	A	324	NAP	P2B-O2B-C2B	-2.32	115.99	121.56
2	B	325	NAP	O5B-C5B-C4B	-2.29	100.67	109.12
3	A	326	IU5	C1-C2-C3	-2.21	106.84	110.43
3	B	327	IU5	C1-C2-C3	-2.21	106.86	110.43
2	A	324	NAP	O5B-C5B-C4B	-2.14	101.25	109.12
2	A	324	NAP	O7N-C7N-C3N	2.02	121.79	119.59
2	B	325	NAP	O7N-C7N-C3N	2.04	121.81	119.59
2	B	325	NAP	C3N-C7N-N7N	2.76	120.83	117.82
2	A	324	NAP	C3N-C7N-N7N	2.97	121.07	117.82
2	B	325	NAP	O4D-C1D-N1N	3.15	111.59	108.13
2	B	325	NAP	C5N-C4N-C3N	3.16	124.31	120.33
2	A	324	NAP	O4D-C1D-N1N	3.17	111.61	108.13
2	A	324	NAP	C5N-C4N-C3N	3.33	124.52	120.33
2	B	325	NAP	C2B-C3B-C4B	3.34	109.76	101.85
2	A	324	NAP	C2B-C3B-C4B	3.45	110.02	101.85
2	B	325	NAP	O3-PN-O5D	3.60	112.50	102.94
2	A	324	NAP	O3-PN-O5D	3.62	112.54	102.94

All (2) chirality outliers are listed below:

Mol	Chain	Res	Type	Atom
3	A	326	IU5	C3
3	B	327	IU5	C3

There are no torsion outliers.

There are no ring outliers.

4 monomers are involved in 9 short contacts:

Mol	Chain	Res	Type	Clashes	Symm-Clashes
2	A	324	NAP	4	0
3	A	326	IU5	1	0
2	B	325	NAP	3	0
3	B	327	IU5	1	0

## 5.7 Other polymers [i](#)

There are no such residues in this entry.

## 5.8 Polymer linkage issues [i](#)

There are no chain breaks in this entry.

## 6 Fit of model and data [i](#)

### 6.1 Protein, DNA and RNA chains [i](#)

In the following table, the column labelled ‘#RSRZ> 2’ contains the number (and percentage) of RSRZ outliers, followed by percent RSRZ outliers for the chain as percentile scores relative to all X-ray entries and entries of similar resolution. The OWAB column contains the minimum, median, 95<sup>th</sup> percentile and maximum values of the occupancy-weighted average B-factor per residue. The column labelled ‘Q< 0.9’ lists the number of (and percentage) of residues with an average occupancy less than 0.9.

Mol	Chain	Analysed	<RSRZ>	#RSRZ>2	OWAB(Å <sup>2</sup> )	Q<0.9
1	A	320/323 (99%)	-0.46	2 (0%) 90 73	3, 14, 26, 34	0
1	B	320/323 (99%)	-0.41	4 (1%) 79 53	3, 15, 34, 41	0
All	All	640/646 (99%)	-0.44	6 (0%) 85 64	3, 14, 30, 41	0

All (6) RSRZ outliers are listed below:

Mol	Chain	Res	Type	RSRZ
1	B	3	SER	4.2
1	B	133	GLU	4.0
1	B	132	ASP	3.6
1	A	3	SER	2.6
1	A	293	MET	2.4
1	B	28	GLU	2.3

### 6.2 Non-standard residues in protein, DNA, RNA chains [i](#)

There are no non-standard protein/DNA/RNA residues in this entry.

### 6.3 Carbohydrates [i](#)

There are no carbohydrates in this entry.

### 6.4 Ligands [i](#)

In the following table, the Atoms column lists the number of modelled atoms in the group and the number defined in the chemical component dictionary. LLDF column lists the quality of electron density of the group with respect to its neighbouring residues in protein, DNA or RNA chains. The B-factors column lists the minimum, median, 95<sup>th</sup> percentile and maximum values of B factors

of atoms in the group. The column labelled 'Q< 0.9' lists the number of atoms with occupancy less than 0.9.

Mol	Type	Chain	Res	Atoms	RSCC	RSR	LLDF	B-factors( $\text{\AA}^2$ )	Q<0.9
3	IU5	B	327	28/28	0.88	0.23	1.35	13,29,31,33	0
3	IU5	A	326	28/28	0.89	0.20	0.28	8,18,21,22	0
2	NAP	B	325	48/48	0.94	0.16	-0.38	18,32,37,37	0
2	NAP	A	324	48/48	0.97	0.13	-0.48	13,18,23,25	0

## 6.5 Other polymers [i](#)

There are no such residues in this entry.