



# Full wwPDB X-ray Structure Validation Report ⓘ

Jul 19, 2016 – 06:44 PM EDT

PDB ID : 5IKT  
Title : The Structure of Tolfenamic Acid Bound to Human Cyclooxygenase-2  
Authors : Orlando, B.J.; Malkowski, M.G.  
Deposited on : 2016-03-03  
Resolution : 2.45 Å(reported)

This is a Full wwPDB X-ray Structure Validation Report for a publicly released PDB entry.  
We welcome your comments at [validation@mail.wwpdb.org](mailto:validation@mail.wwpdb.org)  
A user guide is available at  
<http://wwpdb.org/validation/2016/XrayValidationReportHelp>  
with specific help available everywhere you see the ⓘ symbol.

---

The following versions of software and data (see [references ⓘ](#)) were used in the production of this report:

MolProbity : 4.02b-467  
Mogul : 1.7.1 (RC1), CSD as537be (2016)  
Xtriage (Phenix) : 1.9-1692  
EDS : rb-20027790  
Percentile statistics : 20151230.v01 (using entries in the PDB archive December 30th 2015)  
Refmac : 5.8.0135  
CCP4 : 6.5.0  
Ideal geometry (proteins) : Engh & Huber (2001)  
Ideal geometry (DNA, RNA) : Parkinson et al. (1996)  
Validation Pipeline (wwPDB-VP) : rb-20027790

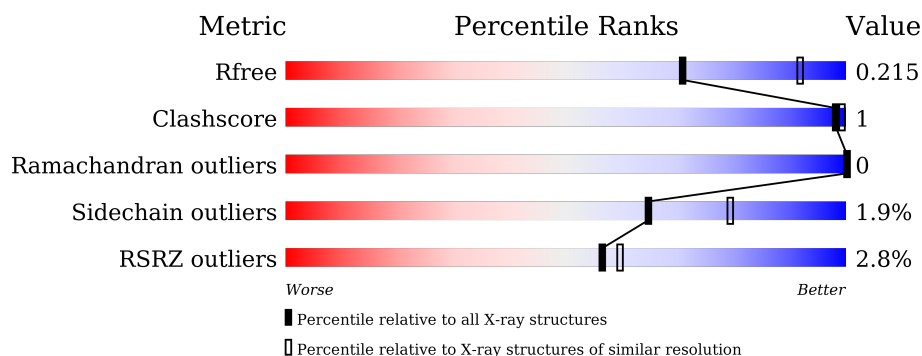
# 1 Overall quality at a glance

The following experimental techniques were used to determine the structure:

*X-RAY DIFFRACTION*

The reported resolution of this entry is 2.45 Å.

Percentile scores (ranging between 0-100) for global validation metrics of the entry are shown in the following graphic. The table shows the number of entries on which the scores are based.



Metric	Whole archive (#Entries)	Similar resolution (#Entries, resolution range(Å))
$R_{free}$	91344	4776 (2.50-2.42)
Clashscore	102246	1030 (2.48-2.44)
Ramachandran outliers	100387	1024 (2.48-2.44)
Sidechain outliers	100360	1024 (2.48-2.44)
RSRZ outliers	91569	4787 (2.50-2.42)

The table below summarises the geometric issues observed across the polymeric chains and their fit to the electron density. The red, orange, yellow and green segments on the lower bar indicate the fraction of residues that contain outliers for  $\geq 3$ , 2, 1 and 0 types of geometric quality criteria. A grey segment represents the fraction of residues that are not modelled. The numeric value for each fraction is indicated below the corresponding segment, with a dot representing fractions  $\leq 5\%$ . The upper red bar (where present) indicates the fraction of residues that have poor fit to the electron density. The numeric value is given above the bar.

Mol	Chain	Length	Quality of chain
1	A	551	<div> <div>3%</div> <div>97%</div> <div>.</div> </div>
1	B	551	<div> <div>2%</div> <div>96%</div> <div>.</div> </div>

The following table lists non-polymeric compounds, carbohydrate monomers and non-standard residues in protein, DNA, RNA chains that are outliers for geometric or electron-density-fit criteria:

Mol	Type	Chain	Res	Chirality	Geometry	Clashes	Electron density
4	NAG	B	603	-	-	-	X
4	NAG	B	608	-	-	-	X
6	PO4	A	609	-	-	-	X
6	PO4	A	610	-	-	-	X
6	PO4	B	611	-	-	-	X

## 2 Entry composition [i](#)

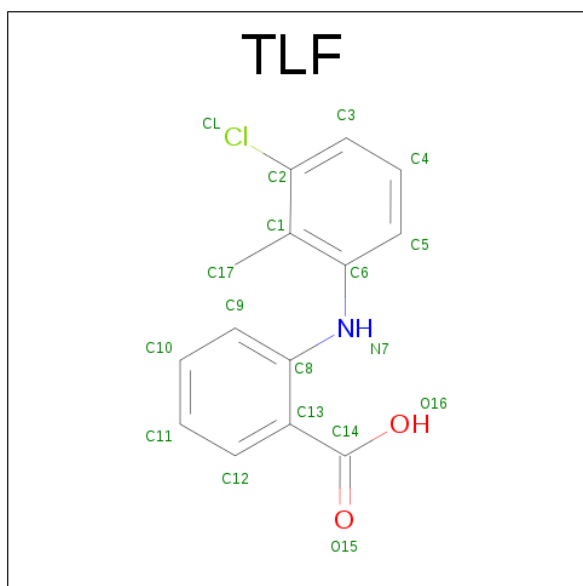
There are 7 unique types of molecules in this entry. The entry contains 18512 atoms, of which 8866 are hydrogens and 0 are deuteriums.

In the tables below, the ZeroOcc column contains the number of atoms modelled with zero occupancy, the AltConf column contains the number of residues with at least one atom in alternate conformation and the Trace column contains the number of residues modelled with at most 2 atoms.

- Molecule 1 is a protein called Prostaglandin G/H synthase 2.

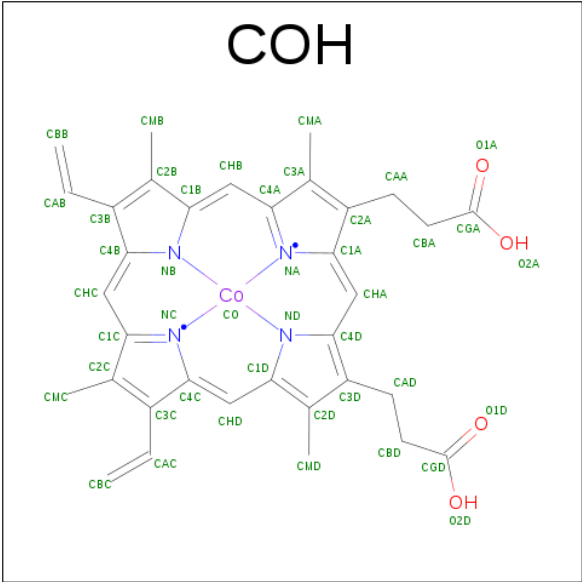
Mol	Chain	Residues	Atoms						ZeroOcc	AltConf	Trace
1	A	551	Total	C	H	N	O	S	0	0	0
			8783	2877	4321	753	806	26			
1	B	551	Total	C	H	N	O	S	0	0	0
			8796	2878	4333	753	806	26			

- Molecule 2 is 2-[(3-chloro-2-methylphenyl)amino]benzoic acid (three-letter code: TLF) (formula: C<sub>14</sub>H<sub>12</sub>ClNO<sub>2</sub>).



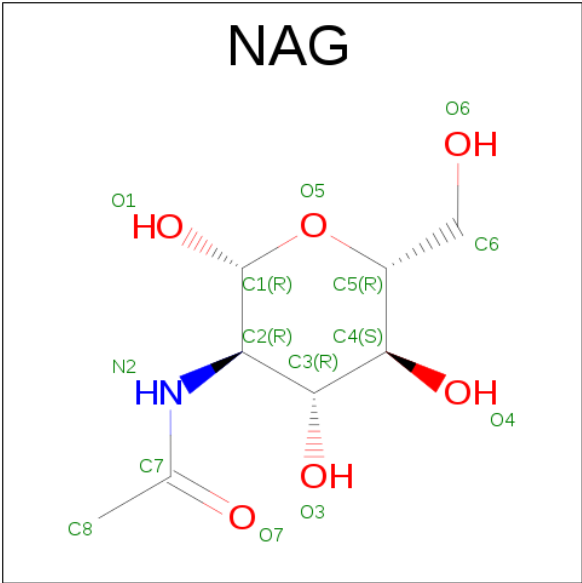
Mol	Chain	Residues	Atoms						ZeroOcc	AltConf
2	A	1	Total	C	Cl	H	N	O	0	0
			29	14	1	11	1	2		
2	B	1	Total	C	Cl	H	N	O	0	0
			29	14	1	11	1	2		

- Molecule 3 is PROTOPORPHYRIN IX CONTAINING CO (three-letter code: COH) (formula: C<sub>34</sub>H<sub>32</sub>CoN<sub>4</sub>O<sub>4</sub>).



Mol	Chain	Residues	Atoms						ZeroOcc	AltConf
3	A	1	Total	C	Co	H	N	O	0	0
			73	34	1	30	4	4		
3	B	1	Total	C	Co	H	N	O	0	0
			73	34	1	30	4	4		

- Molecule 4 is N-ACETYL-D-GLUCOSAMINE (three-letter code: NAG) (formula: C<sub>8</sub>H<sub>15</sub>NO<sub>6</sub>).



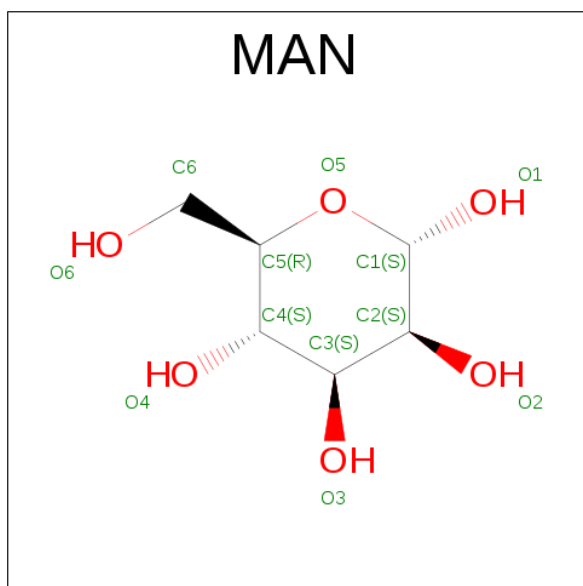
Mol	Chain	Residues	Atoms					ZeroOcc	AltConf
4	A	1	Total	C	H	N	O	0	0
			26	8	12	1	5		
4	A	1	Total	C	H	N	O	0	0
			26	8	12	1	5		

Continued on next page...

Continued from previous page...

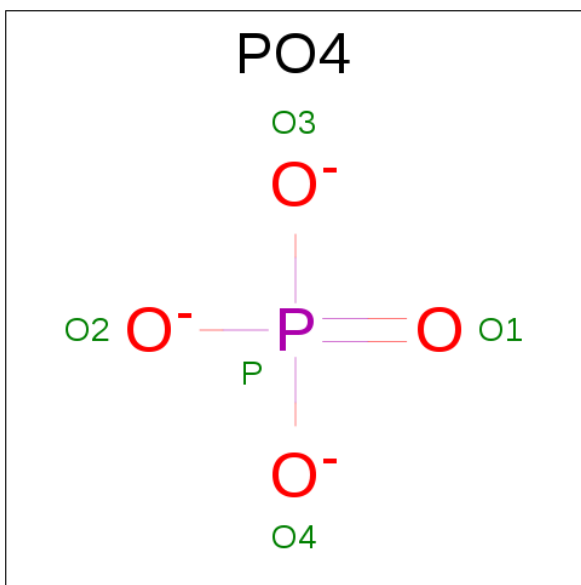
Mol	Chain	Residues	Atoms					ZeroOcc	AltConf
4	A	1	Total	C	H	N	O	0	0
			26	8	12	1	5		
4	A	1	Total	C	H	N	O	0	0
			27	8	13	1	5		
4	B	1	Total	C	H	N	O	0	0
			27	8	13	1	5		
4	B	1	Total	C	H	N	O	0	0
			26	8	12	1	5		
4	B	1	Total	C	H	N	O	0	0
			26	8	12	1	5		
4	B	1	Total	C	H	N	O	0	0
			25	8	11	1	5		
4	B	1	Total	C	H	N	O	0	0
			27	8	13	1	5		

- Molecule 5 is ALPHA-D-MANNOSE (three-letter code: MAN) (formula: C<sub>6</sub>H<sub>12</sub>O<sub>6</sub>).



Mol	Chain	Residues	Atoms				ZeroOcc	AltConf
5	A	1	Total	C	H	O	0	0
			21	6	10	5		
5	B	1	Total	C	H	O	0	0
			21	6	10	5		

- Molecule 6 is PHOSPHATE ION (three-letter code: PO4) (formula: O<sub>4</sub>P).



Mol	Chain	Residues	Atoms			ZeroOcc	AltConf
6	A	1	Total	O	P	0	0
			5	4	1		
6	A	1	Total	O	P	0	0
			5	4	1		
6	A	1	Total	O	P	0	0
			5	4	1		
6	B	1	Total	O	P	0	0
			5	4	1		
6	B	1	Total	O	P	0	0
			5	4	1		
6	B	1	Total	O	P	0	0
			5	4	1		

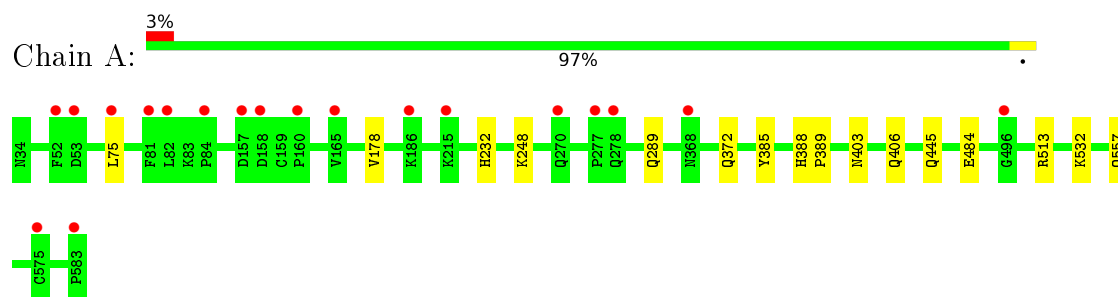
- Molecule 7 is water.

Mol	Chain	Residues	Atoms		ZeroOcc	AltConf
7	A	197	Total	O	0	0
			197	197		
7	B	224	Total	O	0	0
			224	224		

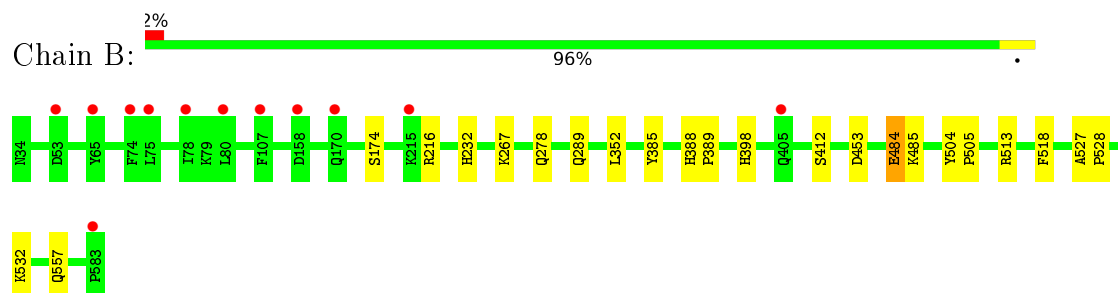
### 3 Residue-property plots [i](#)

These plots are drawn for all protein, RNA and DNA chains in the entry. The first graphic for a chain summarises the proportions of errors displayed in the second graphic. The second graphic shows the sequence view annotated by issues in geometry and electron density. Residues are color-coded according to the number of geometric quality criteria for which they contain at least one outlier: green = 0, yellow = 1, orange = 2 and red = 3 or more. A red dot above a residue indicates a poor fit to the electron density ( $RSRZ > 2$ ). Stretches of 2 or more consecutive residues without any outlier are shown as a green connector. Residues present in the sample, but not in the model, are shown in grey.

- Molecule 1: Prostaglandin G/H synthase 2



- Molecule 1: Prostaglandin G/H synthase 2





## 4 Data and refinement statistics

Property	Value	Source
Space group	I 2 2 2	Depositor
Cell constants a, b, c, $\alpha$ , $\beta$ , $\gamma$	126.67Å 149.76Å 185.73Å 90.00° 90.00° 90.00°	Depositor
Resolution (Å)	29.97 – 2.45 29.97 – 2.45	Depositor EDS
% Data completeness (in resolution range)	97.1 (29.97-2.45) 92.3 (29.97-2.45)	Depositor EDS
$R_{merge}$	(Not available)	Depositor
$R_{sym}$	(Not available)	Depositor
$\langle I/\sigma(I) \rangle$ <sup>1</sup>	2.91 (at 2.45Å)	Xtriage
Refinement program	PHENIX (phenix.refine: 1.9_1692)	Depositor
R, $R_{free}$	0.179 , 0.220 0.177 , 0.215	Depositor DCC
$R_{free}$ test set	2972 reflections (4.96%)	DCC
Wilson B-factor (Å <sup>2</sup> )	34.5	Xtriage
Anisotropy	0.043	Xtriage
Bulk solvent $k_{sol}$ (e/Å <sup>3</sup> ), $B_{sol}$ (Å <sup>2</sup> )	0.40 , 46.3	EDS
L-test for twinning <sup>2</sup>	$\langle  L  \rangle = 0.49$ , $\langle L^2 \rangle = 0.32$	Xtriage
Estimated twinning fraction	No twinning to report.	Xtriage
$F_o, F_c$ correlation	0.94	EDS
Total number of atoms	18512	wwPDB-VP
Average B, all atoms (Å <sup>2</sup> )	50.0	wwPDB-VP

Xtriage's analysis on translational NCS is as follows: *The largest off-origin peak in the Patterson function is 2.86% of the height of the origin peak. No significant pseudotranslation is detected.*

<sup>1</sup>Intensities estimated from amplitudes.

<sup>2</sup>Theoretical values of  $\langle |L| \rangle$ ,  $\langle L^2 \rangle$  for acentric reflections are 0.5, 0.333 respectively for untwinned datasets, and 0.375, 0.2 for perfectly twinned datasets.

## 5 Model quality

### 5.1 Standard geometry

Bond lengths and bond angles in the following residue types are not validated in this section: COH, PO4, MAN, NAG, TLF

The Z score for a bond length (or angle) is the number of standard deviations the observed value is removed from the expected value. A bond length (or angle) with  $|Z| > 5$  is considered an outlier worth inspection. RMSZ is the root-mean-square of all Z scores of the bond lengths (or angles).

Mol	Chain	Bond lengths		Bond angles	
		RMSZ	# Z  >5	RMSZ	# Z  >5
1	A	0.24	0/4594	0.40	0/6233
1	B	0.25	0/4595	0.40	0/6234
All	All	0.25	0/9189	0.40	0/12467

There are no bond length outliers.

There are no bond angle outliers.

There are no chirality outliers.

There are no planarity outliers.

### 5.2 Too-close contacts

In the following table, the Non-H and H(model) columns list the number of non-hydrogen atoms and hydrogen atoms in the chain respectively. The H(added) column lists the number of hydrogen atoms added and optimized by MolProbity. The Clashes column lists the number of clashes within the asymmetric unit, whereas Symm-Clashes lists symmetry related clashes.

Mol	Chain	Non-H	H(model)	H(added)	Clashes	Symm-Clashes
1	A	4462	4321	4331	5	0
1	B	4463	4333	4332	6	0
2	A	18	11	11	1	0
2	B	18	11	11	1	0
3	A	43	30	30	2	0
3	B	43	30	30	3	0
4	A	56	49	49	0	0
4	B	70	61	61	0	0
5	A	11	10	10	0	0
5	B	11	10	10	0	0
6	A	15	0	0	0	0

*Continued on next page...*

*Continued from previous page...*

Mol	Chain	Non-H	H(model)	H(added)	Clashes	Symm-Clashes
6	B	15	0	0	0	0
7	A	197	0	0	1	0
7	B	224	0	0	0	0
All	All	9646	8866	8875	18	0

The all-atom clashscore is defined as the number of clashes found per 1000 atoms (including hydrogen atoms). The all-atom clashscore for this structure is 1.

All (18) close contacts within the same asymmetric unit are listed below, sorted by their clash magnitude.

Atom-1	Atom-2	Interatomic distance (Å)	Clash overlap (Å)
3:A:602:COH:HHD	3:A:602:COH:HBC1	1.78	0.65
3:B:602:COH:HBC1	3:B:602:COH:HHD	1.80	0.63
3:B:602:COH:HHB	3:B:602:COH:HBA2	1.81	0.62
3:A:602:COH:HMB1	3:A:602:COH:HBB1	1.87	0.56
3:B:602:COH:HBB1	3:B:602:COH:HMB1	1.90	0.53
2:B:601:TLF:N7	2:B:601:TLF:O15	2.44	0.50
1:B:388:HIS:N	1:B:389:PRO:CD	2.76	0.49
1:A:372:GLN:O	1:A:532:LYS:NZ	2.48	0.47
2:A:601:TLF:O15	2:A:601:TLF:N7	2.48	0.46
1:A:403:ASN:ND2	1:A:406:GLN:OE1	2.51	0.44
1:A:388:HIS:N	1:A:389:PRO:CD	2.80	0.44
1:B:352:LEU:HD11	1:B:518:PHE:CE2	2.53	0.43
1:B:174:SER:OG	1:B:453:ASP:OD1	2.26	0.43
1:B:527:ALA:HB3	1:B:528:PRO:HD3	2.01	0.42
1:A:178:VAL:HG11	1:A:445:GLN:HG3	2.01	0.42
1:B:504:TYR:HB3	1:B:505:PRO:HD3	2.02	0.41
1:B:484:GLU:HG2	1:B:485:LYS:N	2.37	0.40
1:A:248:LYS:NZ	7:A:713:HOH:O	2.53	0.40

There are no symmetry-related clashes.

## 5.3 Torsion angles [i](#)

### 5.3.1 Protein backbone [i](#)

In the following table, the Percentiles column shows the percent Ramachandran outliers of the chain as a percentile score with respect to all X-ray entries followed by that with respect to entries of similar resolution.

The Analysed column shows the number of residues for which the backbone conformation was analysed, and the total number of residues.

Mol	Chain	Analysed	Favoured	Allowed	Outliers	Percentiles	
1	A	549/551 (100%)	533 (97%)	16 (3%)	0	100	100
1	B	549/551 (100%)	536 (98%)	13 (2%)	0	100	100
All	All	1098/1102 (100%)	1069 (97%)	29 (3%)	0	100	100

There are no Ramachandran outliers to report.

### 5.3.2 Protein sidechains ⓘ

In the following table, the Percentiles column shows the percent sidechain outliers of the chain as a percentile score with respect to all X-ray entries followed by that with respect to entries of similar resolution.

The Analysed column shows the number of residues for which the sidechain conformation was analysed, and the total number of residues.

Mol	Chain	Analysed	Rotameric	Outliers	Percentiles	
1	A	488/490 (100%)	481 (99%)	7 (1%)	74	85
1	B	488/490 (100%)	476 (98%)	12 (2%)	55	72
All	All	976/980 (100%)	957 (98%)	19 (2%)	65	79

All (19) residues with a non-rotameric sidechain are listed below:

Mol	Chain	Res	Type
1	A	75	LEU
1	A	232	HIS
1	A	289	GLN
1	A	385	TYR
1	A	484	GLU
1	A	513	ARG
1	A	557	GLN
1	B	216	ARG
1	B	232	HIS
1	B	267	LYS
1	B	278	GLN
1	B	289	GLN
1	B	385	TYR
1	B	398	HIS
1	B	412	SER

*Continued on next page...*

*Continued from previous page...*

Mol	Chain	Res	Type
1	B	484	GLU
1	B	513	ARG
1	B	532	LYS
1	B	557	GLN

Some sidechains can be flipped to improve hydrogen bonding and reduce clashes. There are no such sidechains identified.

### 5.3.3 RNA [i](#)

There are no RNA molecules in this entry.

## 5.4 Non-standard residues in protein, DNA, RNA chains [i](#)

There are no non-standard protein/DNA/RNA residues in this entry.

## 5.5 Carbohydrates [i](#)

There are no carbohydrates in this entry.

## 5.6 Ligand geometry [i](#)

21 ligands are modelled in this entry.

In the following table, the Counts columns list the number of bonds (or angles) for which Mogul statistics could be retrieved, the number of bonds (or angles) that are observed in the model and the number of bonds (or angles) that are defined in the chemical component dictionary. The Link column lists molecule types, if any, to which the group is linked. The Z score for a bond length (or angle) is the number of standard deviations the observed value is removed from the expected value. A bond length (or angle) with  $|Z| > 2$  is considered an outlier worth inspection. RMSZ is the root-mean-square of all Z scores of the bond lengths (or angles).

Mol	Type	Chain	Res	Link	Bond lengths			Bond angles		
					Counts	RMSZ	$\# Z  > 2$	Counts	RMSZ	$\# Z  > 2$
2	TLF	A	601	-	16,19,19	0.58	0	22,26,26	1.49	4 (18%)
3	COH	A	602	1	27,50,50	4.50	20 (74%)	23,82,82	4.55	8 (34%)
4	NAG	A	603	1,4	14,14,15	0.35	0	15,19,21	0.40	0
4	NAG	A	604	5,4	14,14,15	0.44	0	15,19,21	0.40	0
5	MAN	A	605	4	11,11,12	0.79	0	15,15,17	1.31	3 (20%)
4	NAG	A	606	1,4	14,14,15	0.37	0	15,19,21	0.38	0

Mol	Type	Chain	Res	Link	Bond lengths			Bond angles		
					Counts	RMSZ	# Z  > 2	Counts	RMSZ	# Z  > 2
4	NAG	A	607	4	14,14,15	0.25	0	15,19,21	0.41	0
6	PO4	A	608	-	4,4,4	0.70	0	6,6,6	0.23	0
6	PO4	A	609	-	4,4,4	0.69	0	6,6,6	0.23	0
6	PO4	A	610	-	4,4,4	0.69	0	6,6,6	0.23	0
2	TLF	B	601	-	16,19,19	0.59	0	22,26,26	1.47	3 (13%)
3	COH	B	602	1	27,50,50	4.55	20 (74%)	23,82,82	4.52	8 (34%)
4	NAG	B	603	1	14,14,15	0.27	0	15,19,21	0.37	0
4	NAG	B	604	1,4	14,14,15	0.25	0	15,19,21	0.42	0
4	NAG	B	605	5,4	14,14,15	0.45	0	15,19,21	0.54	0
5	MAN	B	606	4	11,11,12	0.73	0	15,15,17	1.39	3 (20%)
4	NAG	B	607	1,4	14,14,15	0.55	0	15,19,21	0.55	0
4	NAG	B	608	4	14,14,15	0.23	0	15,19,21	0.45	0
6	PO4	B	609	-	4,4,4	0.71	0	6,6,6	0.23	0
6	PO4	B	610	-	4,4,4	0.70	0	6,6,6	0.23	0
6	PO4	B	611	-	4,4,4	0.69	0	6,6,6	0.24	0

In the following table, the Chirals column lists the number of chiral outliers, the number of chiral centers analysed, the number of these observed in the model and the number defined in the chemical component dictionary. Similar counts are reported in the Torsion and Rings columns. '-' means no outliers of that kind were identified.

Mol	Type	Chain	Res	Link	Chirals	Torsions	Rings
2	TLF	A	601	-	-	0/4/8/8	0/2/2/2
3	COH	A	602	1	-	0/8/94/94	0/0/8/8
4	NAG	A	603	1,4	-	0/6/23/26	0/1/1/1
4	NAG	A	604	5,4	-	0/6/23/26	0/1/1/1
5	MAN	A	605	4	-	0/2/19/22	0/1/1/1
4	NAG	A	606	1,4	-	0/6/23/26	0/1/1/1
4	NAG	A	607	4	-	0/6/23/26	0/1/1/1
6	PO4	A	608	-	-	0/0/0/0	0/0/0/0
6	PO4	A	609	-	-	0/0/0/0	0/0/0/0
6	PO4	A	610	-	-	0/0/0/0	0/0/0/0
2	TLF	B	601	-	-	0/4/8/8	0/2/2/2
3	COH	B	602	1	-	0/8/94/94	0/0/8/8
4	NAG	B	603	1	-	0/6/23/26	0/1/1/1
4	NAG	B	604	1,4	-	0/6/23/26	0/1/1/1
4	NAG	B	605	5,4	-	0/6/23/26	0/1/1/1
5	MAN	B	606	4	-	0/2/19/22	0/1/1/1
4	NAG	B	607	1,4	-	0/6/23/26	0/1/1/1
4	NAG	B	608	4	-	0/6/23/26	0/1/1/1
6	PO4	B	609	-	-	0/0/0/0	0/0/0/0
6	PO4	B	610	-	-	0/0/0/0	0/0/0/0

Continued on next page...

*Continued from previous page...*

Mol	Type	Chain	Res	Link	Chirals	Torsions	Rings
6	PO4	B	611	-	-	0/0/0/0	0/0/0/0

All (40) bond length outliers are listed below:

Mol	Chain	Res	Type	Atoms	Z	Observed(Å)	Ideal(Å)
3	B	602	COH	CHA-C1A	-8.16	1.37	1.53
3	A	602	COH	CHA-C1A	-8.03	1.38	1.53
3	B	602	COH	CHC-C1C	-7.85	1.38	1.53
3	B	602	COH	CHB-C4A	-7.77	1.38	1.53
3	A	602	COH	CHB-C4A	-7.77	1.38	1.53
3	A	602	COH	CHC-C1C	-7.75	1.38	1.53
3	A	602	COH	CHD-C4C	-7.51	1.39	1.53
3	B	602	COH	CHD-C4C	-7.41	1.39	1.53
3	B	602	COH	CHA-C4D	-5.16	1.37	1.51
3	A	602	COH	CHA-C4D	-5.02	1.38	1.51
3	B	602	COH	CHC-C4B	-4.96	1.38	1.51
3	B	602	COH	CHB-C1B	-4.91	1.38	1.51
3	A	602	COH	CHC-C4B	-4.87	1.38	1.51
3	A	602	COH	CHB-C1B	-4.81	1.38	1.51
3	B	602	COH	CHD-C1D	-4.66	1.39	1.51
3	A	602	COH	CHD-C1D	-4.62	1.39	1.51
3	B	602	COH	C3B-C2B	-4.07	1.35	1.40
3	A	602	COH	C3B-C2B	-3.90	1.35	1.40
3	A	602	COH	C4C-C3C	-2.72	1.46	1.50
3	B	602	COH	C4C-C3C	-2.68	1.46	1.50
3	A	602	COH	CAD-C3D	2.13	1.55	1.52
3	B	602	COH	CAD-C3D	2.46	1.56	1.52
3	B	602	COH	CMA-C3A	2.61	1.55	1.50
3	A	602	COH	CMA-C3A	2.62	1.55	1.50
3	B	602	COH	CMC-C2C	2.70	1.55	1.50
3	A	602	COH	CMC-C2C	2.71	1.55	1.50
3	A	602	COH	CAA-C2A	2.74	1.54	1.51
3	B	602	COH	CAA-C2A	3.26	1.55	1.51
3	B	602	COH	C3B-CAB	3.75	1.55	1.47
3	A	602	COH	C3B-CAB	3.84	1.55	1.47
3	B	602	COH	C4D-C3D	4.94	1.45	1.38
3	A	602	COH	C4D-C3D	5.03	1.45	1.38
3	B	602	COH	CAC-C3C	5.19	1.55	1.45
3	A	602	COH	C1D-C2D	5.22	1.45	1.38
3	A	602	COH	CAC-C3C	5.22	1.55	1.45
3	A	602	COH	C1B-C2B	5.29	1.45	1.38
3	B	602	COH	C1B-C2B	5.38	1.45	1.38

*Continued on next page...*

*Continued from previous page...*

Mol	Chain	Res	Type	Atoms	Z	Observed(Å)	Ideal(Å)
3	B	602	COH	C1D-C2D	5.45	1.45	1.38
3	A	602	COH	C3D-C2D	5.66	1.54	1.37
3	B	602	COH	C3D-C2D	5.70	1.54	1.37

All (29) bond angle outliers are listed below:

Mol	Chain	Res	Type	Atoms	Z	Observed(°)	Ideal(°)
3	A	602	COH	CMB-C2B-C1B	-5.15	121.88	127.13
3	B	602	COH	CMB-C2B-C1B	-4.08	122.97	127.13
3	B	602	COH	CHC-C4B-C3B	-3.55	125.19	129.66
3	A	602	COH	CHC-C4B-C3B	-3.19	125.65	129.66
5	A	605	MAN	O2-C2-C3	-2.40	105.36	110.19
2	A	601	TLF	C3-C2-C1	-2.30	119.94	122.91
5	B	606	MAN	O2-C2-C3	-2.28	105.59	110.19
2	B	601	TLF	C3-C2-C1	-2.15	120.13	122.91
2	A	601	TLF	C1-C2-CL	2.15	121.28	119.56
3	A	602	COH	C4B-C3B-C2B	2.21	107.23	104.44
3	B	602	COH	CMB-C2B-C3B	2.30	129.58	125.09
5	A	605	MAN	C1-O5-C5	2.40	115.67	112.14
2	A	601	TLF	C12-C13-C8	2.43	120.47	117.98
3	B	602	COH	C4B-C3B-C2B	2.48	107.58	104.44
5	A	605	MAN	C1-C2-C3	2.55	112.65	109.55
2	B	601	TLF	C12-C13-C8	2.57	120.60	117.98
5	B	606	MAN	C1-C2-C3	2.65	112.76	109.55
3	A	602	COH	CMB-C2B-C3B	2.76	130.50	125.09
5	B	606	MAN	C1-O5-C5	2.79	116.24	112.14
2	A	601	TLF	C6-C1-C2	4.97	120.00	116.48
2	B	601	TLF	C6-C1-C2	5.06	120.06	116.48
3	B	602	COH	CHD-C4C-NC	9.12	124.09	110.12
3	A	602	COH	CHD-C4C-NC	9.26	124.32	110.12
3	B	602	COH	CHB-C4A-NA	9.93	125.34	110.12
3	A	602	COH	CHB-C4A-NA	10.19	125.74	110.12
3	B	602	COH	CHA-C1A-NA	10.38	126.03	110.12
3	A	602	COH	CHA-C1A-NA	10.40	126.06	110.12
3	A	602	COH	CHC-C1C-NC	10.76	126.61	110.12
3	B	602	COH	CHC-C1C-NC	11.16	127.22	110.12

There are no chirality outliers.

There are no torsion outliers.

There are no ring outliers.

4 monomers are involved in 7 short contacts:



Mol	Chain	Res	Type	Clashes	Symm-Clashes
2	A	601	TLF	1	0
3	A	602	COH	2	0
2	B	601	TLF	1	0
3	B	602	COH	3	0

## 5.7 Other polymers [i](#)

There are no such residues in this entry.

## 5.8 Polymer linkage issues [i](#)

There are no chain breaks in this entry.

## 6 Fit of model and data ⓘ

### 6.1 Protein, DNA and RNA chains ⓘ

In the following table, the column labelled ‘#RSRZ> 2’ contains the number (and percentage) of RSRZ outliers, followed by percent RSRZ outliers for the chain as percentile scores relative to all X-ray entries and entries of similar resolution. The OWAB column contains the minimum, median, 95<sup>th</sup> percentile and maximum values of the occupancy-weighted average B-factor per residue. The column labelled ‘Q< 0.9’ lists the number of (and percentage) of residues with an average occupancy less than 0.9.

Mol	Chain	Analysed	<RSRZ>	#RSRZ>2			OWAB(Å <sup>2</sup> )	Q<0.9
1	A	551/551 (100%)	-0.05	19 (3%)	49	52	22, 46, 73, 102	0
1	B	551/551 (100%)	-0.15	12 (2%)	65	68	20, 41, 67, 102	0
All	All	1102/1102 (100%)	-0.10	31 (2%)	56	60	20, 43, 71, 102	0

All (31) RSRZ outliers are listed below:

Mol	Chain	Res	Type	RSRZ
1	A	81	PHE	4.0
1	A	158	ASP	3.8
1	A	277	PRO	3.6
1	A	75	LEU	3.6
1	A	157	ASP	3.2
1	B	75	LEU	3.2
1	A	278	GLN	3.1
1	B	53	ASP	3.0
1	A	575	CYS	2.9
1	B	74	PHE	2.9
1	A	82	LEU	2.7
1	A	215	LYS	2.7
1	B	170	GLN	2.7
1	A	52	PHE	2.6
1	B	78	ILE	2.6
1	A	186	LYS	2.5
1	B	215	LYS	2.5
1	A	583	PRO	2.5
1	A	368	ASN	2.5
1	A	160	PRO	2.4
1	A	165	VAL	2.4
1	B	583	PRO	2.4
1	B	158	ASP	2.3
1	A	496	GLY	2.3

*Continued on next page...*

*Continued from previous page...*

Mol	Chain	Res	Type	RSRZ
1	B	107	PHE	2.3
1	A	53	ASP	2.3
1	B	80	LEU	2.2
1	B	65	TYR	2.2
1	A	84	PRO	2.1
1	A	270	GLN	2.1
1	B	405	GLN	2.1

## 6.2 Non-standard residues in protein, DNA, RNA chains [i](#)

There are no non-standard protein/DNA/RNA residues in this entry.

## 6.3 Carbohydrates [i](#)

There are no carbohydrates in this entry.

## 6.4 Ligands [i](#)

In the following table, the Atoms column lists the number of modelled atoms in the group and the number defined in the chemical component dictionary. LLDF column lists the quality of electron density of the group with respect to its neighbouring residues in protein, DNA or RNA chains. The B-factors column lists the minimum, median, 95<sup>th</sup> percentile and maximum values of B factors of atoms in the group. The column labelled 'Q < 0.9' lists the number of atoms with occupancy less than 0.9.

Mol	Type	Chain	Res	Atoms	RSCC	RSR	LLDF	B-factors(Å <sup>2</sup> )	Q<0.9
6	PO4	A	610	5/5	0.79	0.28	6.97	146,163,184,285	0
4	NAG	B	603	14/15	0.78	0.43	5.68	91,101,121,121	0
6	PO4	A	609	5/5	0.87	0.33	5.66	77,91,115,134	0
6	PO4	B	611	5/5	0.88	0.23	3.72	69,83,152,166	0
4	NAG	B	608	14/15	0.75	0.30	2.49	85,100,119,124	0
6	PO4	B	610	5/5	0.97	0.18	1.40	58,62,82,92	0
6	PO4	B	609	5/5	0.92	0.26	1.38	100,115,131,137	0
6	PO4	A	608	5/5	0.94	0.23	0.76	73,79,111,201	0
2	TLF	B	601	18/18	0.98	0.16	0.72	24,29,35,38	0
3	COH	B	602	43/43	0.94	0.17	0.08	42,57,74,83	0
4	NAG	A	603	14/15	0.96	0.12	-0.12	30,42,53,59	0
3	COH	A	602	43/43	0.94	0.16	-0.18	44,58,79,101	0
4	NAG	B	604	14/15	0.97	0.12	-0.19	30,40,48,54	0
2	TLF	A	601	18/18	0.97	0.12	-0.23	27,42,51,55	0

*Continued on next page...*

*Continued from previous page...*

Mol	Type	Chain	Res	Atoms	RSCC	RSR	LLDF	B-factors( $\text{\AA}^2$ )	Q<0.9
4	NAG	A	606	14/15	0.94	0.13	-0.59	54,74,89,93	0
4	NAG	B	607	14/15	0.90	0.17	-0.65	60,77,103,123	0
4	NAG	B	605	14/15	0.94	0.21	-	37,50,83,86	0
4	NAG	A	604	14/15	0.90	0.26	-	59,78,92,102	0
5	MAN	B	606	11/12	0.70	0.28	-	65,77,88,92	0
4	NAG	A	607	14/15	0.84	0.28	-	74,109,150,155	0
5	MAN	A	605	11/12	0.41	0.37	-	111,132,153,174	0

## 6.5 Other polymers [i](#)

There are no such residues in this entry.