



Full wwPDB X-ray Structure Validation Report ⓘ

Feb 1, 2016 – 05:33 PM GMT

PDB ID : 4IQG
Title : Crystal structure of BPRO0239 oxidoreductase from Polaromonas sp. JS666 in NADP bound form
Authors : Niedzialkowska, E.; Majorek, K.A.; Porebski, P.J.; Al Obaidi, N.; Hammonds, J.; Hillerich, B.; Seidel, R.; Bonanno, J.B.; Almo, S.C.; Minor, W.; New York Structural Genomics Research Consortium (NYSGRG)
Deposited on : 2013-01-11
Resolution : 1.85 Å(reported)

This is a Full wwPDB X-ray Structure Validation Report for a publicly released PDB entry.
We welcome your comments at validation@mail.wwpdb.org
A user guide is available at
<http://wwpdb.org/validation/2016/XrayValidationReportHelp>
with specific help available everywhere you see the ⓘ symbol.

The following versions of software and data (see [references ⓘ](#)) were used in the production of this report:

MolProbity : 4.02b-467
Mogul : 1.7 (RC4), CSD as536be (2015)
Xtriage (Phenix) : 1.9-1692
EDS : rb-20026688
Percentile statistics : 20151230.v01 (using entries in the PDB archive December 30th 2015)
Refmac : 5.8.0135
CCP4 : 6.5.0
Ideal geometry (proteins) : Engh & Huber (2001)
Ideal geometry (DNA, RNA) : Parkinson et al. (1996)
Validation Pipeline (wwPDB-VP) : trunk26865

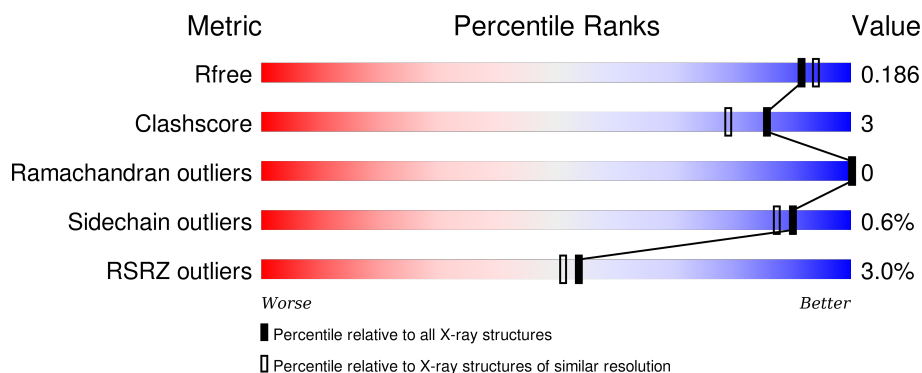
1 Overall quality at a glance

The following experimental techniques were used to determine the structure:

X-RAY DIFFRACTION

The reported resolution of this entry is 1.85 Å.

Percentile scores (ranging between 0-100) for global validation metrics of the entry are shown in the following graphic. The table shows the number of entries on which the scores are based.



Metric	Whole archive (#Entries)	Similar resolution (#Entries, resolution range(Å))
R_{free}	91344	1745 (1.86-1.86)
Clashscore	102246	1898 (1.86-1.86)
Ramachandran outliers	100387	1875 (1.86-1.86)
Sidechain outliers	100360	1875 (1.86-1.86)
RSRZ outliers	91569	1747 (1.86-1.86)

The table below summarises the geometric issues observed across the polymeric chains and their fit to the electron density. The red, orange, yellow and green segments on the lower bar indicate the fraction of residues that contain outliers for ≥ 3 , 2, 1 and 0 types of geometric quality criteria. A grey segment represents the fraction of residues that are not modelled. The numeric value for each fraction is indicated below the corresponding segment, with a dot representing fractions $\leq 5\%$. The upper red bar (where present) indicates the fraction of residues that have poor fit to the electron density. The numeric value is given above the bar.

Mol	Chain	Length	Quality of chain
1	A	271	 3% 81% 6% 13%
1	B	271	 % 86% 6% 9%
1	C	271	 6% 85% 7% 9%
1	D	271	 % 83% 8% 8%

The following table lists non-polymeric compounds, carbohydrate monomers and non-standard

residues in protein, DNA, RNA chains that are outliers for geometric or electron-density-fit criteria:

Mol	Type	Chain	Res	Chirality	Geometry	Clashes	Electron density
2	FMT	A	302	-	-	-	X
2	FMT	B	302	-	-	-	X
2	FMT	C	302	-	-	-	X
4	GOL	A	303	-	-	X	X
5	PEG	D	302	-	-	X	-

2 Entry composition

There are 6 unique types of molecules in this entry. The entry contains 7931 atoms, of which 0 are hydrogens and 0 are deuteriums.

In the tables below, the ZeroOcc column contains the number of atoms modelled with zero occupancy, the AltConf column contains the number of residues with at least one atom in alternate conformation and the Trace column contains the number of residues modelled with at most 2 atoms.

- Molecule 1 is a protein called Short-chain dehydrogenase/reductase SDR.

Mol	Chain	Residues	Atoms						ZeroOcc	AltConf	Trace
1	C	247	Total	C	N	O	S	Se	0	4	0
			1792	1115	324	348	1	4			
1	A	235	Total	C	N	O	S	Se	0	4	0
			1707	1066	307	329	1	4			
1	B	247	Total	C	N	O	S	Se	0	4	0
			1805	1121	330	349	1	4			
1	D	248	Total	C	N	O	S	Se	0	5	0
			1827	1133	335	354	1	4			

There are 96 discrepancies between the modelled and reference sequences:

Chain	Residue	Modelled	Actual	Comment	Reference
C	-22	MSE	-	EXPRESSION TAG	UNP Q12GY8
C	-21	HIS	-	EXPRESSION TAG	UNP Q12GY8
C	-20	HIS	-	EXPRESSION TAG	UNP Q12GY8
C	-19	HIS	-	EXPRESSION TAG	UNP Q12GY8
C	-18	HIS	-	EXPRESSION TAG	UNP Q12GY8
C	-17	HIS	-	EXPRESSION TAG	UNP Q12GY8
C	-16	HIS	-	EXPRESSION TAG	UNP Q12GY8
C	-15	SER	-	EXPRESSION TAG	UNP Q12GY8
C	-14	SER	-	EXPRESSION TAG	UNP Q12GY8
C	-13	GLY	-	EXPRESSION TAG	UNP Q12GY8
C	-12	VAL	-	EXPRESSION TAG	UNP Q12GY8
C	-11	ASP	-	EXPRESSION TAG	UNP Q12GY8
C	-10	LEU	-	EXPRESSION TAG	UNP Q12GY8
C	-9	GLY	-	EXPRESSION TAG	UNP Q12GY8
C	-8	THR	-	EXPRESSION TAG	UNP Q12GY8
C	-7	GLU	-	EXPRESSION TAG	UNP Q12GY8
C	-6	ASN	-	EXPRESSION TAG	UNP Q12GY8
C	-5	LEU	-	EXPRESSION TAG	UNP Q12GY8
C	-4	TYR	-	EXPRESSION TAG	UNP Q12GY8
C	-3	PHE	-	EXPRESSION TAG	UNP Q12GY8
C	-2	GLN	-	EXPRESSION TAG	UNP Q12GY8

Continued on next page...

Continued from previous page...

Chain	Residue	Modelled	Actual	Comment	Reference
C	-1	SER	-	EXPRESSION TAG	UNP Q12GY8
C	0	MSE	-	EXPRESSION TAG	UNP Q12GY8
C	1	LEU	-	EXPRESSION TAG	UNP Q12GY8
A	-22	MSE	-	EXPRESSION TAG	UNP Q12GY8
A	-21	HIS	-	EXPRESSION TAG	UNP Q12GY8
A	-20	HIS	-	EXPRESSION TAG	UNP Q12GY8
A	-19	HIS	-	EXPRESSION TAG	UNP Q12GY8
A	-18	HIS	-	EXPRESSION TAG	UNP Q12GY8
A	-17	HIS	-	EXPRESSION TAG	UNP Q12GY8
A	-16	HIS	-	EXPRESSION TAG	UNP Q12GY8
A	-15	SER	-	EXPRESSION TAG	UNP Q12GY8
A	-14	SER	-	EXPRESSION TAG	UNP Q12GY8
A	-13	GLY	-	EXPRESSION TAG	UNP Q12GY8
A	-12	VAL	-	EXPRESSION TAG	UNP Q12GY8
A	-11	ASP	-	EXPRESSION TAG	UNP Q12GY8
A	-10	LEU	-	EXPRESSION TAG	UNP Q12GY8
A	-9	GLY	-	EXPRESSION TAG	UNP Q12GY8
A	-8	THR	-	EXPRESSION TAG	UNP Q12GY8
A	-7	GLU	-	EXPRESSION TAG	UNP Q12GY8
A	-6	ASN	-	EXPRESSION TAG	UNP Q12GY8
A	-5	LEU	-	EXPRESSION TAG	UNP Q12GY8
A	-4	TYR	-	EXPRESSION TAG	UNP Q12GY8
A	-3	PHE	-	EXPRESSION TAG	UNP Q12GY8
A	-2	GLN	-	EXPRESSION TAG	UNP Q12GY8
A	-1	SER	-	EXPRESSION TAG	UNP Q12GY8
A	0	MSE	-	EXPRESSION TAG	UNP Q12GY8
A	1	LEU	-	EXPRESSION TAG	UNP Q12GY8
B	-22	MSE	-	EXPRESSION TAG	UNP Q12GY8
B	-21	HIS	-	EXPRESSION TAG	UNP Q12GY8
B	-20	HIS	-	EXPRESSION TAG	UNP Q12GY8
B	-19	HIS	-	EXPRESSION TAG	UNP Q12GY8
B	-18	HIS	-	EXPRESSION TAG	UNP Q12GY8
B	-17	HIS	-	EXPRESSION TAG	UNP Q12GY8
B	-16	HIS	-	EXPRESSION TAG	UNP Q12GY8
B	-15	SER	-	EXPRESSION TAG	UNP Q12GY8
B	-14	SER	-	EXPRESSION TAG	UNP Q12GY8
B	-13	GLY	-	EXPRESSION TAG	UNP Q12GY8
B	-12	VAL	-	EXPRESSION TAG	UNP Q12GY8
B	-11	ASP	-	EXPRESSION TAG	UNP Q12GY8
B	-10	LEU	-	EXPRESSION TAG	UNP Q12GY8
B	-9	GLY	-	EXPRESSION TAG	UNP Q12GY8
B	-8	THR	-	EXPRESSION TAG	UNP Q12GY8

Continued on next page...

Continued from previous page...

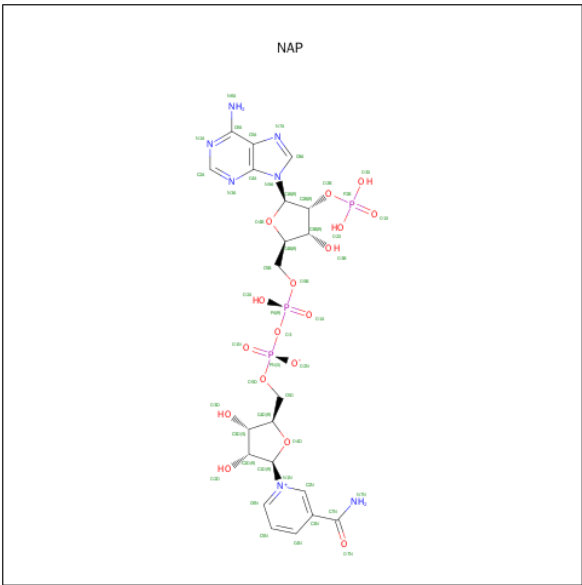
Chain	Residue	Modelled	Actual	Comment	Reference
B	-7	GLU	-	EXPRESSION TAG	UNP Q12GY8
B	-6	ASN	-	EXPRESSION TAG	UNP Q12GY8
B	-5	LEU	-	EXPRESSION TAG	UNP Q12GY8
B	-4	TYR	-	EXPRESSION TAG	UNP Q12GY8
B	-3	PHE	-	EXPRESSION TAG	UNP Q12GY8
B	-2	GLN	-	EXPRESSION TAG	UNP Q12GY8
B	-1	SER	-	EXPRESSION TAG	UNP Q12GY8
B	0	MSE	-	EXPRESSION TAG	UNP Q12GY8
B	1	LEU	-	EXPRESSION TAG	UNP Q12GY8
D	-22	MSE	-	EXPRESSION TAG	UNP Q12GY8
D	-21	HIS	-	EXPRESSION TAG	UNP Q12GY8
D	-20	HIS	-	EXPRESSION TAG	UNP Q12GY8
D	-19	HIS	-	EXPRESSION TAG	UNP Q12GY8
D	-18	HIS	-	EXPRESSION TAG	UNP Q12GY8
D	-17	HIS	-	EXPRESSION TAG	UNP Q12GY8
D	-16	HIS	-	EXPRESSION TAG	UNP Q12GY8
D	-15	SER	-	EXPRESSION TAG	UNP Q12GY8
D	-14	SER	-	EXPRESSION TAG	UNP Q12GY8
D	-13	GLY	-	EXPRESSION TAG	UNP Q12GY8
D	-12	VAL	-	EXPRESSION TAG	UNP Q12GY8
D	-11	ASP	-	EXPRESSION TAG	UNP Q12GY8
D	-10	LEU	-	EXPRESSION TAG	UNP Q12GY8
D	-9	GLY	-	EXPRESSION TAG	UNP Q12GY8
D	-8	THR	-	EXPRESSION TAG	UNP Q12GY8
D	-7	GLU	-	EXPRESSION TAG	UNP Q12GY8
D	-6	ASN	-	EXPRESSION TAG	UNP Q12GY8
D	-5	LEU	-	EXPRESSION TAG	UNP Q12GY8
D	-4	TYR	-	EXPRESSION TAG	UNP Q12GY8
D	-3	PHE	-	EXPRESSION TAG	UNP Q12GY8
D	-2	GLN	-	EXPRESSION TAG	UNP Q12GY8
D	-1	SER	-	EXPRESSION TAG	UNP Q12GY8
D	0	MSE	-	EXPRESSION TAG	UNP Q12GY8
D	1	LEU	-	EXPRESSION TAG	UNP Q12GY8

- Molecule 2 is FORMIC ACID (three-letter code: FMT) (formula: CH₂O₂).



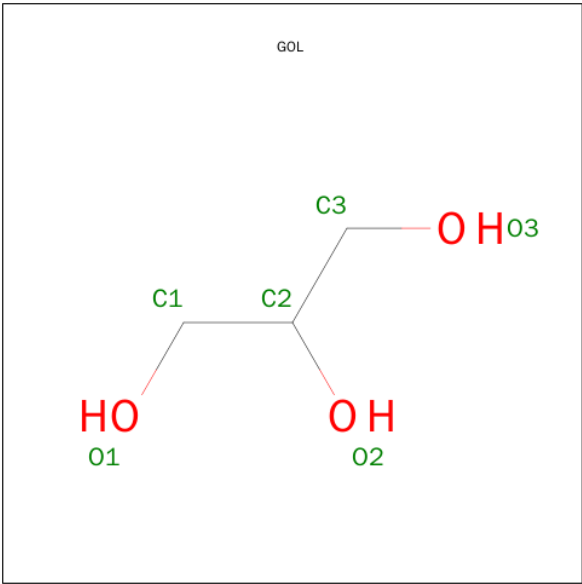
Mol	Chain	Residues	Atoms			ZeroOcc	AltConf
2	C	1	Total	C	O	0	0
			3	1	2		
2	C	1	Total	C	O	0	0
			3	1	2		
2	C	1	Total	C	O	0	0
			3	1	2		
2	A	1	Total	C	O	0	0
			3	1	2		
2	A	1	Total	C	O	0	0
			3	1	2		
2	B	1	Total	C	O	0	0
			3	1	2		
2	B	1	Total	C	O	0	0
			3	1	2		
2	D	1	Total	C	O	0	0
			3	1	2		
2	D	1	Total	C	O	0	0
			3	1	2		

- Molecule 3 is NADP NICOTINAMIDE-ADENINE-DINUCLEOTIDE PHOSPHATE (three-letter code: NAP) (formula: C₂₁H₂₈N₇O₁₇P₃).



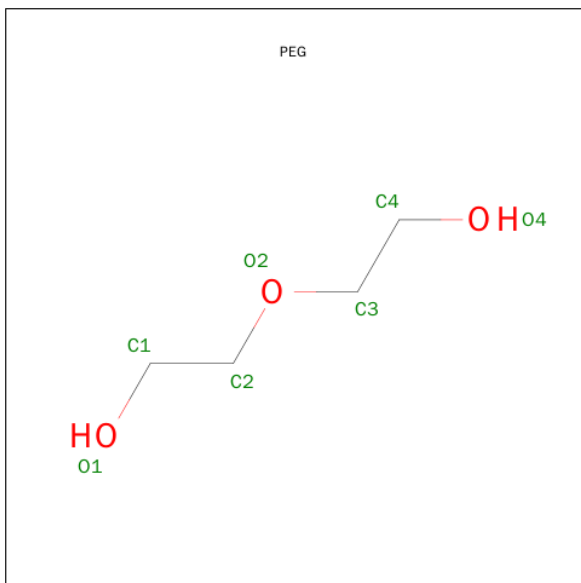
Mol	Chain	Residues	Atoms					ZeroOcc	AltConf
3	C	1	Total	C	N	O	P	0	0
			48	21	7	17	3		
3	A	1	Total	C	N	O	P	0	0
			48	21	7	17	3		
3	B	1	Total	C	N	O	P	0	0
			48	21	7	17	3		
3	D	1	Total	C	N	O	P	0	0
			48	21	7	17	3		

- Molecule 4 is GLYCEROL (three-letter code: GOL) (formula: C₃H₈O₃).



Mol	Chain	Residues	Atoms			ZeroOcc	AltConf
4	A	1	Total	C	O	0	0
			6	3	3		

- Molecule 5 is DI(HYDROXYETHYL)ETHER (three-letter code: PEG) (formula: C₄H₁₀O₃).



Mol	Chain	Residues	Atoms			ZeroOcc	AltConf
5	D	1	Total	C	O	0	0
			7	4	3		

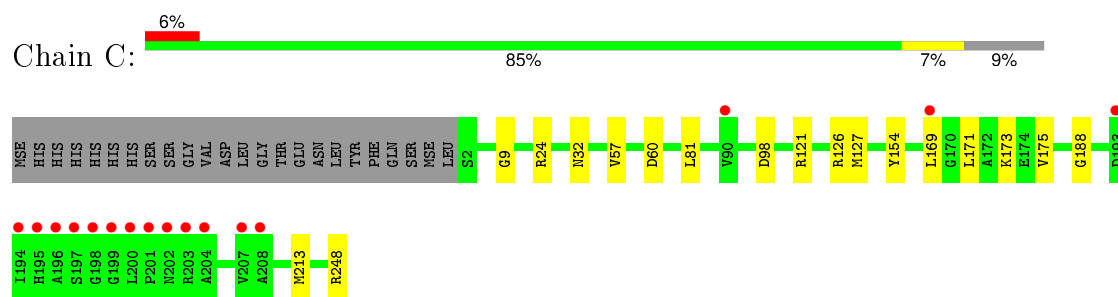
- Molecule 6 is water.

Mol	Chain	Residues	Atoms		ZeroOcc	AltConf
6	C	129	Total	O	0	0
			129	129		
6	A	124	Total	O	0	0
			124	124		
6	B	154	Total	O	0	0
			154	154		
6	D	161	Total	O	0	1
			161	161		

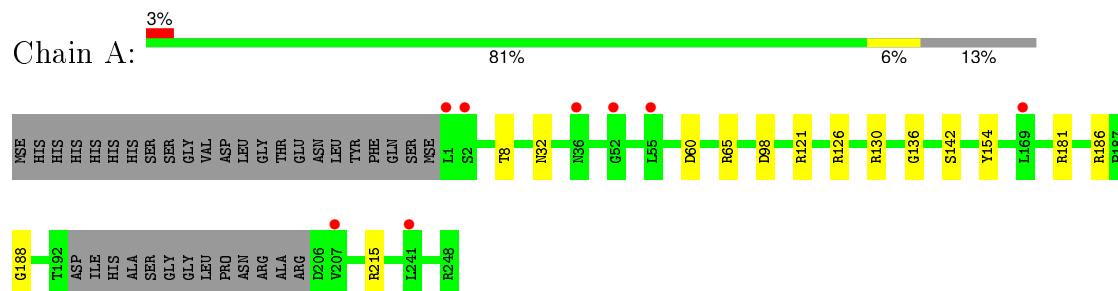
3 Residue-property plots [i](#)

These plots are drawn for all protein, RNA and DNA chains in the entry. The first graphic for a chain summarises the proportions of errors displayed in the second graphic. The second graphic shows the sequence view annotated by issues in geometry and electron density. Residues are color-coded according to the number of geometric quality criteria for which they contain at least one outlier: green = 0, yellow = 1, orange = 2 and red = 3 or more. A red dot above a residue indicates a poor fit to the electron density ($RSRZ > 2$). Stretches of 2 or more consecutive residues without any outlier are shown as a green connector. Residues present in the sample, but not in the model, are shown in grey.

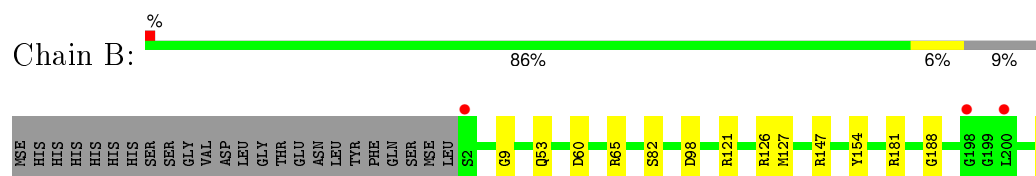
- Molecule 1: Short-chain dehydrogenase/reductase SDR



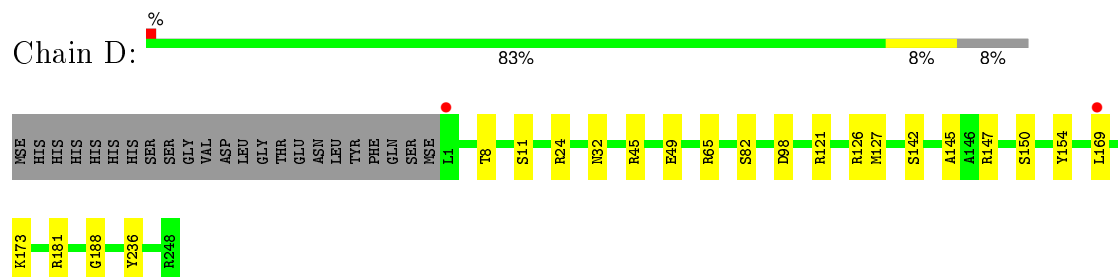
- Molecule 1: Short-chain dehydrogenase/reductase SDR



- Molecule 1: Short-chain dehydrogenase/reductase SDR



- Molecule 1: Short-chain dehydrogenase/reductase SDR



4 Data and refinement statistics

Property	Value	Source
Space group	P 1 21 1	Depositor
Cell constants a, b, c, α , β , γ	68.14Å 97.71Å 70.67Å 90.00° 97.32° 90.00°	Depositor
Resolution (Å)	40.11 – 1.85 40.08 – 1.85	Depositor EDS
% Data completeness (in resolution range)	99.9 (40.11-1.85) 99.6 (40.08-1.85)	Depositor EDS
R_{merge}	0.08	Depositor
R_{sym}	(Not available)	Depositor
$\langle I/\sigma(I) \rangle$ ¹	1.81 (at 1.84Å)	Xtriage
Refinement program	REFMAC 5.7.0029	Depositor
R, R_{free}	0.148 , 0.173 0.160 , 0.186	Depositor DCC
R_{free} test set	3934 reflections (5.30%)	DCC
Wilson B-factor (Å ²)	23.8	Xtriage
Anisotropy	0.290	Xtriage
Bulk solvent k_{sol} (e/Å ³), B_{sol} (Å ²)	0.36 , 49.4	EDS
Estimated twinning fraction	0.015 for l,-k,h	Xtriage
L-test for twinning ²	$\langle L \rangle = 0.50$, $\langle L^2 \rangle = 0.34$	Xtriage
Outliers	0 of 78418 reflections	Xtriage
F_o, F_c correlation	0.97	EDS
Total number of atoms	7931	wwPDB-VP
Average B, all atoms (Å ²)	30.0	wwPDB-VP

Xtriage's analysis on translational NCS is as follows: *The largest off-origin peak in the Patterson function is 4.73% of the height of the origin peak. No significant pseudotranslation is detected.*

¹Intensities estimated from amplitudes.

²Theoretical values of $\langle |L| \rangle$, $\langle L^2 \rangle$ for acentric reflections are 0.5, 0.375 respectively for untwinned datasets, and 0.333, 0.2 for perfectly twinned datasets.

5 Model quality

5.1 Standard geometry

Bond lengths and bond angles in the following residue types are not validated in this section: GOL, FMT, PEG, NAP

The Z score for a bond length (or angle) is the number of standard deviations the observed value is removed from the expected value. A bond length (or angle) with $|Z| > 5$ is considered an outlier worth inspection. RMSZ is the root-mean-square of all Z scores of the bond lengths (or angles).

Mol	Chain	Bond lengths		Bond angles	
		RMSZ	$\# Z > 5$	RMSZ	$\# Z > 5$
1	A	0.80	0/1730	0.91	6/2338 (0.3%)
1	B	0.89	0/1828	0.96	7/2470 (0.3%)
1	C	0.87	0/1815	0.93	5/2455 (0.2%)
1	D	0.94	1/1856 (0.1%)	1.02	8/2507 (0.3%)
All	All	0.88	1/7229 (0.0%)	0.96	26/9770 (0.3%)

All (1) bond length outliers are listed below:

Mol	Chain	Res	Type	Atoms	Z	Observed(Å)	Ideal(Å)
1	D	236	TYR	CE1-CZ	-5.22	1.31	1.38

All (26) bond angle outliers are listed below:

Mol	Chain	Res	Type	Atoms	Z	Observed(°)	Ideal(°)
1	D	65	ARG	NE-CZ-NH2	-12.35	114.12	120.30
1	D	65	ARG	NE-CZ-NH1	8.60	124.60	120.30
1	B	60	ASP	CB-CG-OD1	7.04	124.63	118.30
1	B	65	ARG	NE-CZ-NH2	6.92	123.76	120.30
1	C	126	ARG	NE-CZ-NH1	6.55	123.57	120.30
1	A	126	ARG	NE-CZ-NH1	6.53	123.56	120.30
1	D	126	ARG	NE-CZ-NH1	6.52	123.56	120.30
1	D	147	ARG	NE-CZ-NH1	5.84	123.22	120.30
1	B	126	ARG	NE-CZ-NH1	5.82	123.21	120.30
1	B	181	ARG	NE-CZ-NH2	-5.80	117.40	120.30
1	A	65	ARG	NE-CZ-NH2	-5.77	117.42	120.30
1	A	126	ARG	NE-CZ-NH2	-5.75	117.42	120.30
1	A	65	ARG	NE-CZ-NH1	5.72	123.16	120.30
1	D	181	ARG	NE-CZ-NH2	-5.71	117.45	120.30
1	B	248	ARG	NE-CZ-NH2	-5.65	117.48	120.30
1	B	126	ARG	NE-CZ-NH2	-5.57	117.52	120.30

Continued on next page...

Continued from previous page...

Mol	Chain	Res	Type	Atoms	Z	Observed(°)	Ideal(°)
1	D	126	ARG	NE-CZ-NH2	-5.55	117.53	120.30
1	D	24	ARG	NE-CZ-NH1	5.53	123.07	120.30
1	C	248	ARG	NE-CZ-NH2	-5.48	117.56	120.30
1	A	60	ASP	CB-CG-OD1	5.43	123.19	118.30
1	C	24	ARG	NE-CZ-NH1	5.29	122.95	120.30
1	C	60	ASP	CB-CG-OD1	5.27	123.05	118.30
1	A	215	ARG	NE-CZ-NH1	5.07	122.84	120.30
1	D	147	ARG	NE-CZ-NH2	-5.06	117.77	120.30
1	C	126	ARG	NE-CZ-NH2	-5.04	117.78	120.30
1	B	147	ARG	NE-CZ-NH1	5.03	122.81	120.30

There are no chirality outliers.

There are no planarity outliers.

5.2 Too-close contacts

In the following table, the Non-H and H(model) columns list the number of non-hydrogen atoms and hydrogen atoms in the chain respectively. The H(added) column lists the number of hydrogen atoms added and optimized by MolProbity. The Clashes column lists the number of clashes within the asymmetric unit, whereas Symm-Clashes lists symmetry related clashes.

Mol	Chain	Non-H	H(model)	H(added)	Clashes	Symm-Clashes
1	A	1707	0	1738	10	0
1	B	1805	0	1826	7	0
1	C	1792	0	1810	10	0
1	D	1827	0	1865	17	0
2	A	6	0	3	0	0
2	B	6	0	3	0	0
2	C	9	0	3	0	0
2	D	6	0	4	0	0
3	A	48	0	25	1	0
3	B	48	0	25	2	0
3	C	48	0	25	2	0
3	D	48	0	25	3	0
4	A	6	0	8	5	0
5	D	7	0	10	6	0
6	A	124	0	0	3	0
6	B	154	0	0	1	0
6	C	129	0	0	0	0
6	D	161	0	0	0	0
All	All	7931	0	7370	41	0

The all-atom clashscore is defined as the number of clashes found per 1000 atoms (including hydrogen atoms). The all-atom clashscore for this structure is 3.

All (41) close contacts within the same asymmetric unit are listed below, sorted by their clash magnitude.

Atom-1	Atom-2	Interatomic distance (Å)	Clash overlap (Å)
1:D:150:SER:HA	5:D:302:PEG:H21	1.54	0.87
1:D:150:SER:CA	5:D:302:PEG:H21	2.14	0.78
1:D:150:SER:H	5:D:302:PEG:H21	1.48	0.78
1:D:150:SER:N	5:D:302:PEG:H21	2.01	0.75
1:A:181:ARG:HH21	4:A:303:GOL:H11	1.54	0.72
1:C:188:GLY:O	3:C:304:NAP:H4N	1.97	0.64
1:D:150:SER:HA	5:D:302:PEG:C2	2.26	0.64
4:A:303:GOL:H12	6:A:511:HOH:O	1.98	0.64
1:A:181:ARG:HH21	4:A:303:GOL:C1	2.12	0.62
1:D:188:GLY:O	3:D:301:NAP:H4N	1.99	0.62
1:A:136:GLY:O	4:A:303:GOL:H32	2.03	0.59
1:B:188:GLY:O	3:B:301:NAP:H4N	2.09	0.53
1:D:169[B]:LEU:HD11	1:D:173:LYS:HE3	1.90	0.52
1:D:169[B]:LEU:CD1	1:D:173:LYS:HE3	2.40	0.52
1:A:188:GLY:O	3:A:304:NAP:H4N	2.09	0.52
1:C:121:ARG:HG3	1:A:98:ASP:HA	1.95	0.49
1:D:45:ARG:NH1	1:D:49:GLU:OE2	2.45	0.49
1:C:9:GLY:HA2	3:C:304:NAP:H1B	1.94	0.48
1:B:82:SER:C	1:B:127:MSE:HE2	2.34	0.47
1:B:53:GLN:NE2	6:B:540:HOH:O	2.48	0.47
1:A:181:ARG:NH2	4:A:303:GOL:H11	2.27	0.46
1:D:142:SER:O	3:D:301:NAP:H6N	2.16	0.46
6:A:442:HOH:O	1:B:220:ARG:HG3	2.16	0.45
1:C:98:ASP:HA	1:A:121:ARG:HG3	2.00	0.44
1:C:169[A]:LEU:HD11	1:C:173:LYS:HE3	2.00	0.44
1:A:8:THR:HA	1:A:32:ASN:HB3	1.99	0.44
1:C:169[A]:LEU:HD12	1:C:169[A]:LEU:HA	1.75	0.42
1:B:121:ARG:HG3	1:D:98:ASP:HA	2.02	0.42
1:A:130:ARG:NH1	6:A:454:HOH:O	2.53	0.42
1:D:8:THR:HA	1:D:32:ASN:HB3	2.01	0.42
1:C:32:ASN:HA	1:C:57:VAL:O	2.20	0.42
1:C:213:MSE:HE2	1:C:213:MSE:HB3	1.88	0.41
1:B:9:GLY:HA2	3:B:301:NAP:H1B	2.03	0.41
1:D:145:ALA:HA	5:D:302:PEG:H12	2.03	0.41
1:B:98:ASP:HA	1:D:121:ARG:HG3	2.03	0.41
1:C:81:LEU:HG	1:C:127:MSE:HE3	2.02	0.40
1:A:142:SER:HB3	1:A:186:ARG:HG2	2.03	0.40

Continued on next page...

Continued from previous page...

Atom-1	Atom-2	Interatomic distance (Å)	Clash overlap (Å)
1:D:11:SER:OG	3:D:301:NAP:O3X	2.37	0.40
1:D:82:SER:C	1:D:127:MSE:HE2	2.41	0.40
1:C:171:LEU:O	1:C:175:VAL:HG22	2.21	0.40

There are no symmetry-related clashes.

5.3 Torsion angles [i](#)

5.3.1 Protein backbone [i](#)

In the following table, the Percentiles column shows the percent Ramachandran outliers of the chain as a percentile score with respect to all X-ray entries followed by that with respect to entries of similar resolution.

The Analysed column shows the number of residues for which the backbone conformation was analysed, and the total number of residues.

Mol	Chain	Analysed	Favoured	Allowed	Outliers	Percentiles	
1	A	235/271 (87%)	228 (97%)	7 (3%)	0	100	100
1	B	249/271 (92%)	241 (97%)	8 (3%)	0	100	100
1	C	249/271 (92%)	241 (97%)	8 (3%)	0	100	100
1	D	251/271 (93%)	243 (97%)	8 (3%)	0	100	100
All	All	984/1084 (91%)	953 (97%)	31 (3%)	0	100	100

There are no Ramachandran outliers to report.

5.3.2 Protein sidechains [i](#)

In the following table, the Percentiles column shows the percent sidechain outliers of the chain as a percentile score with respect to all X-ray entries followed by that with respect to entries of similar resolution.

The Analysed column shows the number of residues for which the sidechain conformation was analysed, and the total number of residues.

Mol	Chain	Analysed	Rotameric	Outliers	Percentiles	
1	A	168/194 (87%)	167 (99%)	1 (1%)	90	87
1	B	177/194 (91%)	176 (99%)	1 (1%)	90	87

Continued on next page...

Continued from previous page...

Mol	Chain	Analysed	Rotameric	Outliers	Percentiles	
1	C	176/194 (91%)	175 (99%)	1 (1%)	90	87
1	D	183/194 (94%)	182 (100%)	1 (0%)	92	90
All	All	704/776 (91%)	700 (99%)	4 (1%)	90	87

All (4) residues with a non-rotameric sidechain are listed below:

Mol	Chain	Res	Type
1	C	154	TYR
1	A	154	TYR
1	B	154	TYR
1	D	154	TYR

Some sidechains can be flipped to improve hydrogen bonding and reduce clashes. There are no such sidechains identified.

5.3.3 RNA ⓘ

There are no RNA molecules in this entry.

5.4 Non-standard residues in protein, DNA, RNA chains ⓘ

There are no non-standard protein/DNA/RNA residues in this entry.

5.5 Carbohydrates ⓘ

There are no carbohydrates in this entry.

5.6 Ligand geometry ⓘ

15 ligands are modelled in this entry.

In the following table, the Counts columns list the number of bonds (or angles) for which Mogul statistics could be retrieved, the number of bonds (or angles) that are observed in the model and the number of bonds (or angles) that are defined in the chemical component dictionary. The Link column lists molecule types, if any, to which the group is linked. The Z score for a bond length (or angle) is the number of standard deviations the observed value is removed from the expected value. A bond length (or angle) with $|Z| > 2$ is considered an outlier worth inspection. RMSZ is the root-mean-square of all Z scores of the bond lengths (or angles).

Mol	Type	Chain	Res	Link	Bond lengths			Bond angles		
					Counts	RMSZ	# Z > 2	Counts	RMSZ	# Z > 2
2	FMT	A	301	-	0,2,2	0.00	-	0,1,1	0.00	-
2	FMT	A	302	-	0,2,2	0.00	-	0,1,1	0.00	-
4	GOL	A	303	-	5,5,5	0.46	0	5,5,5	0.55	0
3	NAP	A	304	-	42,52,52	1.29	4 (9%)	54,80,80	2.26	15 (27%)
3	NAP	B	301	-	42,52,52	1.45	6 (14%)	54,80,80	2.06	14 (25%)
2	FMT	B	302	-	0,2,2	0.00	-	0,1,1	0.00	-
2	FMT	B	303	-	0,2,2	0.00	-	0,1,1	0.00	-
2	FMT	C	301	-	0,2,2	0.00	-	0,1,1	0.00	-
2	FMT	C	302	-	0,2,2	0.00	-	0,1,1	0.00	-
2	FMT	C	303	-	0,2,2	0.00	-	0,1,1	0.00	-
3	NAP	C	304	-	42,52,52	1.39	5 (11%)	54,80,80	1.66	8 (14%)
3	NAP	D	301	-	42,52,52	1.31	3 (7%)	54,80,80	2.28	13 (24%)
5	PEG	D	302	-	6,6,6	0.97	1 (16%)	5,5,5	2.02	1 (20%)
2	FMT	D	303	-	0,2,2	0.00	-	0,1,1	0.00	-
2	FMT	D	304	-	0,2,2	0.00	-	0,1,1	0.00	-

In the following table, the Chirals column lists the number of chiral outliers, the number of chiral centers analysed, the number of these observed in the model and the number defined in the chemical component dictionary. Similar counts are reported in the Torsion and Rings columns. '-' means no outliers of that kind were identified.

Mol	Type	Chain	Res	Link	Chirals	Torsions	Rings
2	FMT	A	301	-	-	0/0/0/0	0/0/0/0
2	FMT	A	302	-	-	0/0/0/0	0/0/0/0
4	GOL	A	303	-	-	0/4/4/4	0/0/0/0
3	NAP	A	304	-	-	0/27/67/67	0/5/5/5
3	NAP	B	301	-	-	0/27/67/67	0/5/5/5
2	FMT	B	302	-	-	0/0/0/0	0/0/0/0
2	FMT	B	303	-	-	0/0/0/0	0/0/0/0
2	FMT	C	301	-	-	0/0/0/0	0/0/0/0
2	FMT	C	302	-	-	0/0/0/0	0/0/0/0
2	FMT	C	303	-	-	0/0/0/0	0/0/0/0
3	NAP	C	304	-	-	0/27/67/67	0/5/5/5
3	NAP	D	301	-	-	0/27/67/67	0/5/5/5
5	PEG	D	302	-	-	0/4/4/4	0/0/0/0
2	FMT	D	303	-	-	0/0/0/0	0/0/0/0
2	FMT	D	304	-	-	0/0/0/0	0/0/0/0

All (19) bond length outliers are listed below:

Mol	Chain	Res	Type	Atoms	Z	Observed(Å)	Ideal(Å)
3	B	301	NAP	P2B-O3X	-3.29	1.42	1.54
3	B	301	NAP	C7N-N7N	-2.41	1.28	1.33
3	A	304	NAP	C2N-C3N	2.02	1.42	1.39
5	D	302	PEG	O1-C1	2.06	1.53	1.42
3	B	301	NAP	C2A-N1A	2.38	1.38	1.33
3	C	304	NAP	C2A-N3A	2.40	1.36	1.32
3	D	301	NAP	C2A-N1A	2.45	1.38	1.33
3	B	301	NAP	O4B-C1B	2.76	1.44	1.41
3	C	304	NAP	C6N-C5N	2.77	1.44	1.38
3	D	301	NAP	C8A-N7A	2.81	1.40	1.34
3	C	304	NAP	C2N-C3N	2.82	1.43	1.39
3	A	304	NAP	C6N-C5N	3.06	1.45	1.38
3	B	301	NAP	C4N-C3N	3.12	1.44	1.39
3	B	301	NAP	C5A-C4A	3.20	1.47	1.40
3	A	304	NAP	C5A-C4A	3.22	1.47	1.40
3	C	304	NAP	C5A-C4A	3.53	1.48	1.40
3	A	304	NAP	O4B-C1B	3.76	1.46	1.41
3	C	304	NAP	O4B-C1B	3.90	1.46	1.41
3	D	301	NAP	C5A-C4A	4.14	1.49	1.40

All (51) bond angle outliers are listed below:

Mol	Chain	Res	Type	Atoms	Z	Observed(°)	Ideal(°)
3	D	301	NAP	N3A-C2A-N1A	-11.03	120.45	128.89
3	A	304	NAP	N3A-C2A-N1A	-9.34	121.74	128.89
3	C	304	NAP	N3A-C2A-N1A	-7.60	123.07	128.89
3	B	301	NAP	N3A-C2A-N1A	-7.58	123.09	128.89
3	A	304	NAP	O7N-C7N-C3N	-5.83	113.22	119.59
3	B	301	NAP	O3-PN-O5D	-4.63	90.66	102.94
3	A	304	NAP	O3-PN-O5D	-4.40	91.28	102.94
3	D	301	NAP	C1B-N9A-C4A	-4.28	120.49	126.94
3	D	301	NAP	C3N-C7N-N7N	-4.15	113.28	117.82
3	D	301	NAP	P2B-O2B-C2B	-3.20	113.88	121.56
3	A	304	NAP	C3N-C2N-N1N	-3.15	116.73	120.36
3	B	301	NAP	C1B-N9A-C4A	-3.12	122.23	126.94
3	A	304	NAP	C4B-O4B-C1B	-3.06	106.35	109.72
3	A	304	NAP	C1B-N9A-C4A	-3.01	122.40	126.94
3	C	304	NAP	O3-PN-O5D	-2.99	95.01	102.94
3	D	301	NAP	C4B-O4B-C1B	-2.85	106.58	109.72
3	A	304	NAP	C6N-C5N-C4N	-2.82	115.18	119.44
3	D	301	NAP	O3-PN-O5D	-2.81	95.47	102.94
3	B	301	NAP	C3N-C7N-N7N	-2.47	115.11	117.82
3	B	301	NAP	O3X-P2B-O1X	-2.43	102.77	110.58

Continued on next page...

Continued from previous page...

Mol	Chain	Res	Type	Atoms	Z	Observed(°)	Ideal(°)
3	A	304	NAP	C4D-O4D-C1D	-2.41	107.07	109.72
3	C	304	NAP	C4A-C5A-N7A	-2.30	107.36	109.48
3	C	304	NAP	C3N-C7N-N7N	-2.30	115.30	117.82
3	B	301	NAP	C3N-C2N-N1N	-2.22	117.80	120.36
3	C	304	NAP	C1B-N9A-C4A	-2.19	123.64	126.94
3	B	301	NAP	O3-PA-O5B	-2.13	97.28	102.94
3	A	304	NAP	C3B-C2B-C1B	-2.10	98.67	102.73
3	B	301	NAP	O2N-PN-O1N	2.03	123.56	112.53
3	C	304	NAP	O4D-C1D-N1N	2.04	110.37	108.13
3	A	304	NAP	N6A-C6A-N1A	2.09	123.69	119.20
3	C	304	NAP	O3X-P2B-O2X	2.32	116.21	107.38
3	A	304	NAP	O7N-C7N-N7N	2.33	125.88	122.59
3	B	301	NAP	O2N-PN-O3	2.37	115.85	105.09
3	B	301	NAP	C2N-C3N-C4N	2.39	120.95	118.29
3	A	304	NAP	O4D-C1D-N1N	2.57	110.95	108.13
3	D	301	NAP	O2B-P2B-O1X	2.68	113.80	107.11
3	A	304	NAP	C3N-C7N-N7N	2.71	120.78	117.82
3	D	301	NAP	O2N-PN-O1N	2.73	127.30	112.53
3	C	304	NAP	O4B-C1B-N9A	2.76	113.87	108.10
3	B	301	NAP	O3X-P2B-O2X	2.81	118.09	107.38
3	D	301	NAP	O4D-C1D-N1N	2.81	111.22	108.13
3	D	301	NAP	O5B-PA-O1A	2.92	120.96	109.62
3	D	301	NAP	O7N-C7N-N7N	2.96	126.75	122.59
3	A	304	NAP	O4B-C1B-N9A	3.04	114.47	108.10
3	B	301	NAP	O2X-P2B-O1X	3.18	120.83	110.58
3	D	301	NAP	C4D-O4D-C1D	3.42	113.48	109.72
3	D	301	NAP	O2X-P2B-O1X	3.83	122.91	110.58
3	B	301	NAP	O4B-C1B-N9A	3.98	116.43	108.10
3	B	301	NAP	O4D-C1D-N1N	4.00	112.53	108.13
5	D	302	PEG	O2-C2-C1	4.03	129.01	110.43
3	A	304	NAP	C2N-C3N-C4N	4.19	122.95	118.29

There are no chirality outliers.

There are no torsion outliers.

There are no ring outliers.

6 monomers are involved in 19 short contacts:

Mol	Chain	Res	Type	Clashes	Symm-Clashes
4	A	303	GOL	5	0
3	A	304	NAP	1	0
3	B	301	NAP	2	0

Continued on next page...

Continued from previous page...

Mol	Chain	Res	Type	Clashes	Symm-Clashes
3	C	304	NAP	2	0
3	D	301	NAP	3	0
5	D	302	PEG	6	0

5.7 Other polymers [i](#)

There are no such residues in this entry.

5.8 Polymer linkage issues [i](#)

There are no chain breaks in this entry.

6 Fit of model and data ⓘ

6.1 Protein, DNA and RNA chains ⓘ

In the following table, the column labelled ‘#RSRZ> 2’ contains the number (and percentage) of RSRZ outliers, followed by percent RSRZ outliers for the chain as percentile scores relative to all X-ray entries and entries of similar resolution. The OWAB column contains the minimum, median, 95th percentile and maximum values of the occupancy-weighted average B-factor per residue. The column labelled ‘Q< 0.9’ lists the number of (and percentage) of residues with an average occupancy less than 0.9.

Mol	Chain	Analysed	<RSRZ>	#RSRZ>2	OWAB(Å ²)	Q<0.9
1	A	231/271 (85%)	0.03	8 (3%) 48 45	19, 30, 53, 64	0
1	B	243/271 (89%)	-0.25	3 (1%) 81 81	17, 25, 43, 60	0
1	C	243/271 (89%)	0.12	16 (6%) 22 20	17, 28, 59, 69	0
1	D	244/271 (90%)	-0.24	2 (0%) 87 87	15, 24, 43, 65	0
All	All	961/1084 (88%)	-0.09	29 (3%) 54 51	15, 26, 50, 69	0

All (29) RSRZ outliers are listed below:

Mol	Chain	Res	Type	RSRZ
1	C	200	LEU	7.1
1	C	198	GLY	6.5
1	C	204	ALA	6.0
1	C	199	GLY	5.4
1	C	202	ASN	5.3
1	C	201	PRO	5.1
1	A	1	LEU	4.6
1	C	197	SER	4.1
1	C	203	ARG	4.1
1	C	194	ILE	4.1
1	D	1	LEU	4.0
1	C	196	ALA	4.0
1	C	195	HIS	3.6
1	A	207	VAL	3.4
1	C	207	VAL	2.9
1	A	55	LEU	2.9
1	C	169[A]	LEU	2.8
1	B	2	SER	2.6
1	A	169[A]	LEU	2.4
1	C	208	ALA	2.4
1	C	90	VAL	2.3

Continued on next page...

Continued from previous page...

Mol	Chain	Res	Type	RSRZ
1	A	52	GLY	2.3
1	B	198	GLY	2.3
1	A	2	SER	2.3
1	C	193	ASP	2.2
1	D	169[A]	LEU	2.2
1	B	200	LEU	2.1
1	A	36	ASN	2.1
1	A	241	LEU	2.0

6.2 Non-standard residues in protein, DNA, RNA chains ⓘ

There are no non-standard protein/DNA/RNA residues in this entry.

6.3 Carbohydrates ⓘ

There are no carbohydrates in this entry.

6.4 Ligands ⓘ

In the following table, the Atoms column lists the number of modelled atoms in the group and the number defined in the chemical component dictionary. LLDF column lists the quality of electron density of the group with respect to its neighbouring residues in protein, DNA or RNA chains. The B-factors column lists the minimum, median, 95th percentile and maximum values of B factors of atoms in the group. The column labelled 'Q< 0.9' lists the number of atoms with occupancy less than 0.9.

Mol	Type	Chain	Res	Atoms	RSCC	RSR	LLDF	B-factors(Å ²)	Q<0.9
2	FMT	A	302	3/3	0.90	0.25	3.67	32,32,38,40	0
4	GOL	A	303	6/6	0.87	0.23	2.70	27,27,31,36	6
2	FMT	B	302	3/3	0.79	0.19	2.42	41,41,47,53	0
2	FMT	C	302	3/3	0.88	0.23	2.00	37,37,43,43	0
5	PEG	D	302	7/7	0.74	0.20	1.99	34,40,56,58	0
2	FMT	D	304	3/3	0.90	0.23	1.73	31,31,37,42	0
3	NAP	A	304	48/48	0.87	0.16	1.40	29,38,48,61	48
2	FMT	A	301	3/3	0.95	0.18	0.88	32,32,40,47	0
3	NAP	C	304	48/48	0.90	0.16	0.58	25,35,42,43	48
2	FMT	C	301	3/3	0.94	0.13	0.41	45,45,50,54	0
3	NAP	B	301	48/48	0.96	0.09	-0.24	17,21,26,28	48
3	NAP	D	301	48/48	0.97	0.07	-0.55	19,25,29,30	0
2	FMT	C	303	3/3	0.89	0.16	-	58,58,58,64	0

Continued on next page...

Continued from previous page...

Mol	Type	Chain	Res	Atoms	RSCC	RSR	LLDF	B-factors(\AA^2)	Q<0.9
2	FMT	D	303	3/3	0.85	0.28	-	39,39,39,49	0
2	FMT	B	303	3/3	0.94	0.12	-	51,51,53,57	0

6.5 Other polymers [i](#)

There are no such residues in this entry.