



wwPDB X-ray Structure Validation Summary Report ⓘ

May 25, 2016 – 07:48 AM EDT

PDB ID : 5ITZ
Title : Crystal structure of the SAC domain of CPAP in a complex with Tubulin and Darpin
Authors : Sharma, A.; Steinmetz, M.O.
Deposited on : 2016-03-17
Resolution : 2.20 Å(reported)

This is a wwPDB X-ray Structure Validation Summary Report for a publicly released PDB entry.
We welcome your comments at validation@mail.wwpdb.org
A user guide is available at
<http://wwpdb.org/validation/2016/XrayValidationReportHelp>
with specific help available everywhere you see the ⓘ symbol.

The following versions of software and data (see [references ⓘ](#)) were used in the production of this report:

MolProbity : 4.02b-467
Mogul : 1.7.1 (RC1), CSD as537be (2016)
Xtriage (Phenix) : 1.9-1692
EDS : rb-20027674
Percentile statistics : 20151230.v01 (using entries in the PDB archive December 30th 2015)
Refmac : 5.8.0135
CCP4 : 6.5.0
Ideal geometry (proteins) : Engh & Huber (2001)
Ideal geometry (DNA, RNA) : Parkinson et al. (1996)
Validation Pipeline (wwPDB-VP) : rb-20027674

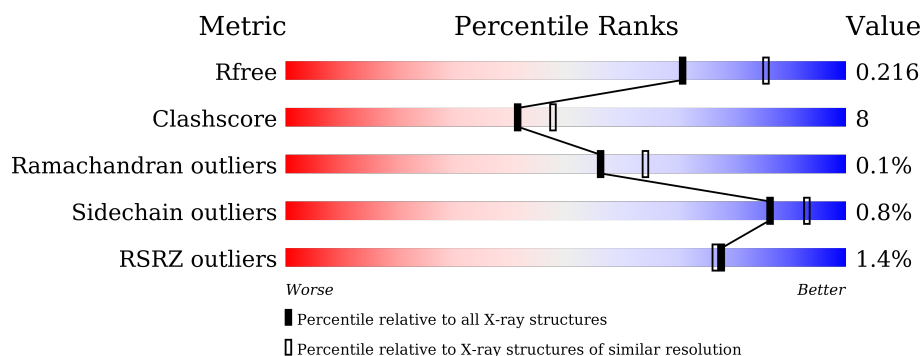
1 Overall quality at a glance

The following experimental techniques were used to determine the structure:

X-RAY DIFFRACTION

The reported resolution of this entry is 2.20 Å.

Percentile scores (ranging between 0-100) for global validation metrics of the entry are shown in the following graphic. The table shows the number of entries on which the scores are based.



Metric	Whole archive (#Entries)	Similar resolution (#Entries, resolution range(Å))
R_{free}	91344	3774 (2.20-2.20)
Clashscore	102246	4477 (2.20-2.20)
Ramachandran outliers	100387	4404 (2.20-2.20)
Sidechain outliers	100360	4405 (2.20-2.20)
RSRZ outliers	91569	3781 (2.20-2.20)

The table below summarises the geometric issues observed across the polymeric chains and their fit to the electron density. The red, orange, yellow and green segments on the lower bar indicate the fraction of residues that contain outliers for ≥ 3 , 2, 1 and 0 types of geometric quality criteria. A grey segment represents the fraction of residues that are not modelled. The numeric value for each fraction is indicated below the corresponding segment, with a dot representing fractions $\leq 5\%$. The upper red bar (where present) indicates the fraction of residues that have poor fit to the electron density. The numeric value is given above the bar.

Mol	Chain	Length	Quality of chain
1	A	451	<div> <div>82%</div> <div>13%</div> <div>5%</div> </div>
2	B	445	<div> <div>3%</div> <div>74%</div> <div>19%</div> <div>6%</div> </div>
3	D	129	<div> <div>10%</div> <div>90%</div> </div>
4	F	127	<div> <div>93%</div> <div>7%</div> </div>

2 Entry composition

There are 9 unique types of molecules in this entry. The entry contains 8279 atoms, of which 0 are hydrogens and 0 are deuteriums.

In the tables below, the ZeroOcc column contains the number of atoms modelled with zero occupancy, the AltConf column contains the number of residues with at least one atom in alternate conformation and the Trace column contains the number of residues modelled with at most 2 atoms.

- Molecule 1 is a protein called Tubulin alpha-1B chain.

Mol	Chain	Residues	Atoms					ZeroOcc	AltConf	Trace
1	A	430	Total	C	N	O	S	0	2	0
			3388	2146	575	645	22			

- Molecule 2 is a protein called Tubulin beta-2B chain.

Mol	Chain	Residues	Atoms					ZeroOcc	AltConf	Trace
2	B	420	Total	C	N	O	S	0	0	0
			3294	2072	561	634	27			

- Molecule 3 is a protein called Centromere protein J.

Mol	Chain	Residues	Atoms				ZeroOcc	AltConf	Trace
3	D	13	Total	C	N	O	0	0	0
			101	67	18	16			

There are 17 discrepancies between the modelled and reference sequences:

Chain	Residue	Modelled	Actual	Comment	Reference
D	294	MET	-	initiating methionine	UNP Q9HC77
D	295	ALA	-	expression tag	UNP Q9HC77
D	296	HIS	-	expression tag	UNP Q9HC77
D	297	HIS	-	expression tag	UNP Q9HC77
D	298	HIS	-	expression tag	UNP Q9HC77
D	299	HIS	-	expression tag	UNP Q9HC77
D	300	HIS	-	expression tag	UNP Q9HC77
D	301	HIS	-	expression tag	UNP Q9HC77
D	302	GLY	-	expression tag	UNP Q9HC77
D	303	SER	-	expression tag	UNP Q9HC77
D	304	LEU	-	expression tag	UNP Q9HC77
D	305	VAL	-	expression tag	UNP Q9HC77
D	306	PRO	-	expression tag	UNP Q9HC77
D	307	ARG	-	expression tag	UNP Q9HC77

Continued on next page...

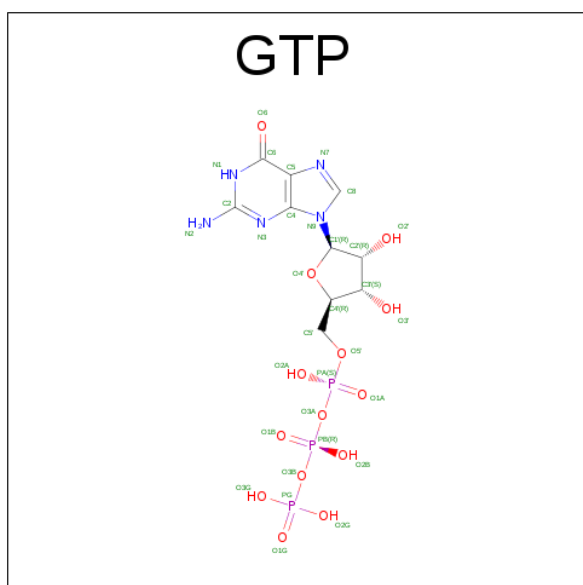
Continued from previous page...

Chain	Residue	Modelled	Actual	Comment	Reference
D	308	GLY	-	expression tag	UNP Q9HC77
D	309	SER	-	expression tag	UNP Q9HC77
D	310	ALA	-	expression tag	UNP Q9HC77

- Molecule 4 is a protein called Designed ankyrin repeat protein (DARPIN) D1.

Mol	Chain	Residues	Atoms					ZeroOcc	AltConf	Trace
4	F	127	Total	C	N	O	S	0	0	0
			933	591	162	177	3			

- Molecule 5 is GUANOSINE-5'-TRIPHOSPHATE (three-letter code: GTP) (formula: $C_{10}H_{16}N_5O_{14}P_3$).

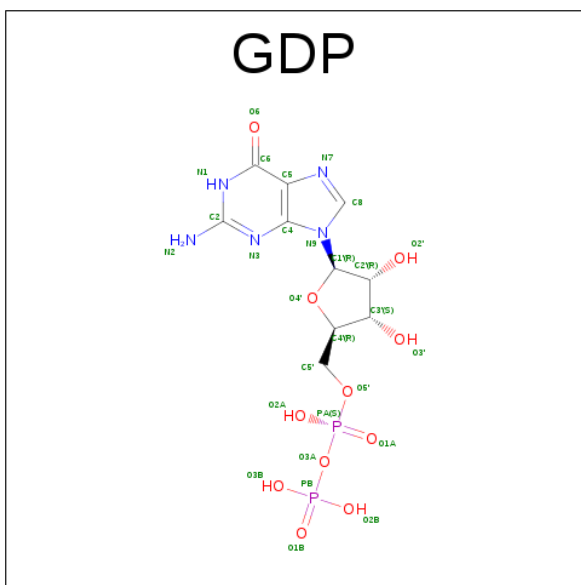


Mol	Chain	Residues	Atoms					ZeroOcc	AltConf
5	A	1	Total	C	N	O	P	0	0
			32	10	5	14	3		

- Molecule 6 is MAGNESIUM ION (three-letter code: MG) (formula: Mg).

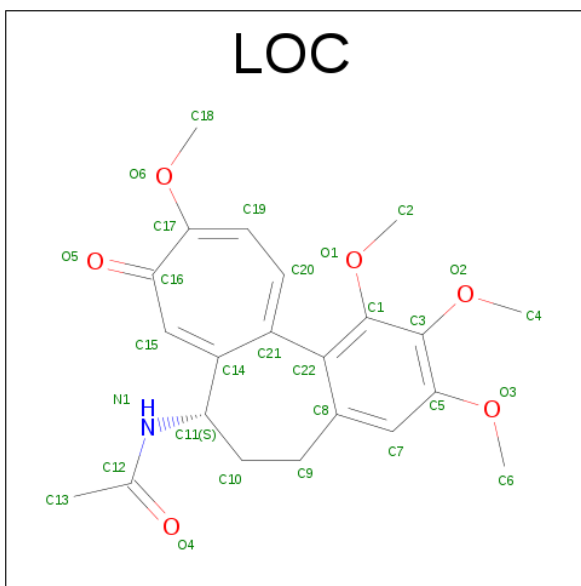
Mol	Chain	Residues	Atoms		ZeroOcc	AltConf
6	A	1	Total	Mg	0	0
			1	1		

- Molecule 7 is GUANOSINE-5'-DIPHOSPHATE (three-letter code: GDP) (formula: $C_{10}H_{15}N_5O_{11}P_2$).



Mol	Chain	Residues	Atoms				ZeroOcc	AltConf
7	B	1	Total	C	N	O	P	
			28	10	5	11	2	

- Molecule 8 is N-[(7S)-1,2,3,10-tetramethoxy-9-oxo-6,7-dihydro-5H-benzo[d]heptalen-7-yl]ethanamide (three-letter code: LOC) (formula: $C_{22}H_{25}NO_6$).

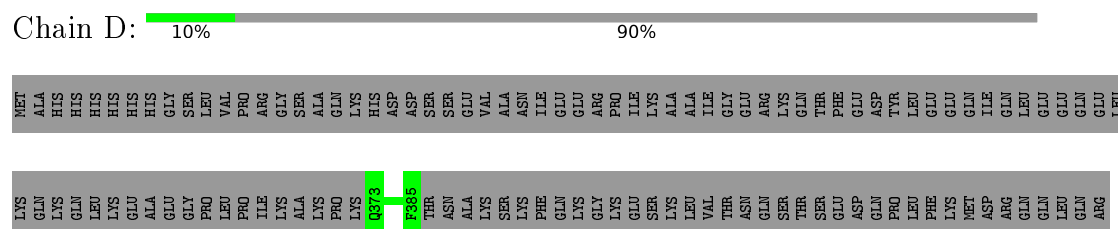


Mol	Chain	Residues	Atoms				ZeroOcc	AltConf
8	B	1	Total	C	N	O		
			29	22	1	6		

- Molecule 9 is water.

Mol	Chain	Residues	Atoms		ZeroOcc	AltConf
9	A	309	Total 309	O 309	0	0
9	B	96	Total 96	O 96	0	0
9	D	2	Total 2	O 2	0	0
9	F	66	Total 66	O 66	0	0

- Molecule 1: Tubulin alpha-1B chain



- Molecule 4: Designed ankyrin repeat protein (DARPIN) D1

Chain F:  93% 7%



4 Data and refinement statistics

Property	Value	Source
Space group	P 1 21 1	Depositor
Cell constants a, b, c, α , β , γ	61.08Å 85.34Å 98.69Å 90.00° 91.77° 90.00°	Depositor
Resolution (Å)	52.64 – 2.20 64.54 – 2.20	Depositor EDS
% Data completeness (in resolution range)	99.9 (52.64-2.20) 99.9 (64.54-2.20)	Depositor EDS
R_{merge}	0.08	Depositor
R_{sym}	(Not available)	Depositor
$\langle I/\sigma(I) \rangle$ ¹	3.07 (at 2.20Å)	Xtriage
Refinement program	PHENIX (1.10.1_2155: ???)	Depositor
R, R_{free}	0.177 , 0.217 0.175 , 0.216	Depositor DCC
R_{free} test set	2003 reflections (3.89%)	DCC
Wilson B-factor (Å ²)	34.5	Xtriage
Anisotropy	0.132	Xtriage
Bulk solvent k_{sol} (e/Å ³), B_{sol} (Å ²)	0.34 , 39.6	EDS
L-test for twinning ²	$\langle L \rangle = 0.49$, $\langle L^2 \rangle = 0.32$	Xtriage
Estimated twinning fraction	0.027 for h,-k,-l	Xtriage
F_o, F_c correlation	0.96	EDS
Total number of atoms	8279	wwPDB-VP
Average B, all atoms (Å ²)	46.0	wwPDB-VP

Xtriage's analysis on translational NCS is as follows: *The largest off-origin peak in the Patterson function is 5.32% of the height of the origin peak. No significant pseudotranslation is detected.*

¹Intensities estimated from amplitudes.

²Theoretical values of $\langle |L| \rangle$, $\langle L^2 \rangle$ for acentric reflections are 0.5, 0.375 respectively for untwinned datasets, and 0.333, 0.2 for perfectly twinned datasets.

5 Model quality [i](#)

5.1 Standard geometry [i](#)

Bond lengths and bond angles in the following residue types are not validated in this section: GTP, LOC, MG, GDP

The Z score for a bond length (or angle) is the number of standard deviations the observed value is removed from the expected value. A bond length (or angle) with $|Z| > 5$ is considered an outlier worth inspection. RMSZ is the root-mean-square of all Z scores of the bond lengths (or angles).

Mol	Chain	Bond lengths		Bond angles	
		RMSZ	# Z >5	RMSZ	# Z >5
1	A	0.48	0/3468	0.59	1/4708 (0.0%)
2	B	0.43	0/3365	0.57	0/4556
3	D	0.32	0/103	0.51	0/136
4	F	0.34	0/947	0.51	0/1291
All	All	0.44	0/7883	0.57	1/10691 (0.0%)

There are no bond length outliers.

All (1) bond angle outliers are listed below:

Mol	Chain	Res	Type	Atoms	Z	Observed(°)	Ideal(°)
1	A	169	PHE	N-CA-C	-5.05	97.36	111.00

There are no chirality outliers.

There are no planarity outliers.

5.2 Too-close contacts [i](#)

In the following table, the Non-H and H(model) columns list the number of non-hydrogen atoms and hydrogen atoms in the chain respectively. The H(added) column lists the number of hydrogen atoms added and optimized by MolProbity. The Clashes column lists the number of clashes within the asymmetric unit, whereas Symm-Clashes lists symmetry related clashes.

Mol	Chain	Non-H	H(model)	H(added)	Clashes	Symm-Clashes
1	A	3388	0	3296	45	0
2	B	3294	0	3174	84	0
3	D	101	0	99	0	0
4	F	933	0	945	6	0
5	A	32	0	12	0	0
6	A	1	0	0	0	0

Continued on next page...

Continued from previous page...

Mol	Chain	Non-H	H(model)	H(added)	Clashes	Symm-Clashes
7	B	28	0	12	1	0
8	B	29	0	25	1	0
9	A	309	0	0	8	0
9	B	96	0	0	4	0
9	D	2	0	0	0	0
9	F	66	0	0	2	0
All	All	8279	0	7563	130	0

The all-atom clashscore is defined as the number of clashes found per 1000 atoms (including hydrogen atoms). The all-atom clashscore for this structure is 8.

The worst 5 of 130 close contacts within the same asymmetric unit are listed below, sorted by their clash magnitude.

Atom-1	Atom-2	Interatomic distance (Å)	Clash overlap (Å)
2:B:140:SER:HA	2:B:171:VAL:HG22	1.33	1.07
2:B:69:ASP:OD2	2:B:74:THR:HG21	1.69	0.91
2:B:83:PHE:HD2	2:B:86:ILE:HD11	1.35	0.88
2:B:83:PHE:CD2	2:B:86:ILE:HD11	2.10	0.87
2:B:161:TYR:HB3	2:B:164:ARG:HG2	1.65	0.78

There are no symmetry-related clashes.

5.3 Torsion angles [i](#)

5.3.1 Protein backbone [i](#)

In the following table, the Percentiles column shows the percent Ramachandran outliers of the chain as a percentile score with respect to all X-ray entries followed by that with respect to entries of similar resolution.

The Analysed column shows the number of residues for which the backbone conformation was analysed, and the total number of residues.

Mol	Chain	Analysed	Favoured	Allowed	Outliers	Percentiles	
1	A	428/451 (95%)	420 (98%)	8 (2%)	0	100	100
2	B	413/445 (93%)	403 (98%)	9 (2%)	1 (0%)	52	59
3	D	11/129 (8%)	11 (100%)	0	0	100	100
4	F	125/127 (98%)	124 (99%)	1 (1%)	0	100	100
All	All	977/1152 (85%)	958 (98%)	18 (2%)	1 (0%)	56	64

All (1) Ramachandran outliers are listed below:

Mol	Chain	Res	Type
2	B	248	LEU

5.3.2 Protein sidechains ⓘ

In the following table, the Percentiles column shows the percent sidechain outliers of the chain as a percentile score with respect to all X-ray entries followed by that with respect to entries of similar resolution.

The Analysed column shows the number of residues for which the sidechain conformation was analysed, and the total number of residues.

Mol	Chain	Analysed	Rotameric	Outliers	Percentiles	
1	A	366/379 (97%)	363 (99%)	3 (1%)	86	93
2	B	361/383 (94%)	357 (99%)	4 (1%)	80	89
3	D	9/113 (8%)	9 (100%)	0	100	100
4	F	96/97 (99%)	96 (100%)	0	100	100
All	All	832/972 (86%)	825 (99%)	7 (1%)	86	93

5 of 7 residues with a non-rotameric sidechain are listed below:

Mol	Chain	Res	Type
2	B	139	HIS
2	B	384	ILE
2	B	167	ASN
1	A	221	ARG
2	B	344	VAL

Some sidechains can be flipped to improve hydrogen bonding and reduce clashes. 5 of 7 such sidechains are listed below:

Mol	Chain	Res	Type
2	B	15	GLN
2	B	334	ASN
2	B	139	HIS
1	A	406	HIS
2	B	167	ASN

5.3.3 RNA ⓘ

There are no RNA molecules in this entry.

5.4 Non-standard residues in protein, DNA, RNA chains ⓘ

There are no non-standard protein/DNA/RNA residues in this entry.

5.5 Carbohydrates ⓘ

There are no carbohydrates in this entry.

5.6 Ligand geometry ⓘ

Of 4 ligands modelled in this entry, 1 is monoatomic - leaving 3 for Mogul analysis.

In the following table, the Counts columns list the number of bonds (or angles) for which Mogul statistics could be retrieved, the number of bonds (or angles) that are observed in the model and the number of bonds (or angles) that are defined in the chemical component dictionary. The Link column lists molecule types, if any, to which the group is linked. The Z score for a bond length (or angle) is the number of standard deviations the observed value is removed from the expected value. A bond length (or angle) with $|Z| > 2$ is considered an outlier worth inspection. RMSZ is the root-mean-square of all Z scores of the bond lengths (or angles).

Mol	Type	Chain	Res	Link	Bond lengths			Bond angles		
					Counts	RMSZ	# $ Z > 2$	Counts	RMSZ	# $ Z > 2$
5	GTP	A	501	6	26,34,34	0.92	1 (3%)	29,54,54	2.01	7 (24%)
7	GDP	B	501	-	24,30,30	1.16	2 (8%)	26,47,47	1.94	5 (19%)
8	LOC	B	502	-	29,31,31	2.34	9 (31%)	27,44,44	1.12	1 (3%)

In the following table, the Chirals column lists the number of chiral outliers, the number of chiral centers analysed, the number of these observed in the model and the number defined in the chemical component dictionary. Similar counts are reported in the Torsion and Rings columns. '-' means no outliers of that kind were identified.

Mol	Type	Chain	Res	Link	Chirals	Torsions	Rings
5	GTP	A	501	6	-	0/18/38/38	0/3/3/3
7	GDP	B	501	-	-	0/12/32/32	0/3/3/3
8	LOC	B	502	-	-	0/10/25/25	0/3/3/3

The worst 5 of 12 bond length outliers are listed below:

Mol	Chain	Res	Type	Atoms	Z	Observed(Å)	Ideal(Å)
8	B	502	LOC	C20-C21	-3.37	1.34	1.40
8	B	502	LOC	C19-C17	-2.95	1.34	1.39
5	A	501	GTP	C6-N1	2.27	1.37	1.33
7	B	501	GDP	C5-C4	3.04	1.47	1.40
8	B	502	LOC	C19-C20	3.11	1.46	1.39

The worst 5 of 13 bond angle outliers are listed below:

Mol	Chain	Res	Type	Atoms	Z	Observed(°)	Ideal(°)
5	A	501	GTP	N3-C2-N1	-6.04	119.34	127.56
7	B	501	GDP	C5-C6-N1	-4.02	118.27	123.52
5	A	501	GTP	C1'-N9-C4	-3.91	122.44	126.81
7	B	501	GDP	C6-C5-C4	-3.78	116.54	120.86
7	B	501	GDP	N3-C2-N1	-3.71	122.51	127.56

There are no chirality outliers.

There are no torsion outliers.

There are no ring outliers.

2 monomers are involved in 2 short contacts:

Mol	Chain	Res	Type	Clashes	Symm-Clashes
7	B	501	GDP	1	0
8	B	502	LOC	1	0

5.7 Other polymers [i](#)

There are no such residues in this entry.

5.8 Polymer linkage issues [i](#)

There are no chain breaks in this entry.

6 Fit of model and data [i](#)

6.1 Protein, DNA and RNA chains [i](#)

In the following table, the column labelled ‘#RSRZ> 2’ contains the number (and percentage) of RSRZ outliers, followed by percent RSRZ outliers for the chain as percentile scores relative to all X-ray entries and entries of similar resolution. The OWAB column contains the minimum, median, 95th percentile and maximum values of the occupancy-weighted average B-factor per residue. The column labelled ‘Q< 0.9’ lists the number of (and percentage) of residues with an average occupancy less than 0.9.

Mol	Chain	Analysed	<RSRZ>	#RSRZ>2	OWAB(Å ²)	Q<0.9
1	A	430/451 (95%)	-0.37	1 (0%) 95 95	21, 35, 60, 113	3 (0%)
2	B	420/445 (94%)	-0.14	13 (3%) 52 51	28, 51, 89, 117	0
3	D	13/129 (10%)	0.34	0 100 100	57, 70, 84, 85	0
4	F	127/127 (100%)	-0.46	0 100 100	28, 40, 61, 96	0
All	All	990/1152 (85%)	-0.28	14 (1%) 78 77	21, 42, 82, 117	3 (0%)

The worst 5 of 14 RSRZ outliers are listed below:

Mol	Chain	Res	Type	RSRZ
2	B	94	PHE	3.7
2	B	284	ARG	3.6
2	B	333	LEU	3.6
1	A	1	MET	3.4
2	B	369	ARG	3.4

6.2 Non-standard residues in protein, DNA, RNA chains [i](#)

There are no non-standard protein/DNA/RNA residues in this entry.

6.3 Carbohydrates [i](#)

There are no carbohydrates in this entry.

6.4 Ligands [i](#)

In the following table, the Atoms column lists the number of modelled atoms in the group and the number defined in the chemical component dictionary. LLDF column lists the quality of electron density of the group with respect to its neighbouring residues in protein, DNA or RNA chains. The B-factors column lists the minimum, median, 95th percentile and maximum values of B factors

of atoms in the group. The column labelled 'Q< 0.9' lists the number of atoms with occupancy less than 0.9.

Mol	Type	Chain	Res	Atoms	RSCC	RSR	LLDF	B-factors(\AA^2)	Q<0.9
8	LOC	B	502	29/29	0.91	0.15	1.20	30,35,41,42	0
5	GTP	A	501	32/32	0.98	0.10	0.38	25,29,31,32	0
7	GDP	B	501	28/28	0.98	0.10	-0.82	35,41,46,49	0
6	MG	A	502	1/1	0.95	0.05	-1.95	31,31,31,31	0

6.5 Other polymers [i](#)

There are no such residues in this entry.