



Full wwPDB X-ray Structure Validation Report ⓘ

Jan 31, 2016 – 08:07 PM GMT

PDB ID : 1IWE
Title : IMP Complex of the Recombinant Mouse-Muscle Adenylosuccinate Synthetase
Authors : Iancu, C.V.; Borza, T.; Fromm, H.J.; Honzatko, R.B.
Deposited on : 2002-05-04
Resolution : 2.10 Å(reported)

This is a Full wwPDB X-ray Structure Validation Report for a publicly released PDB entry.
We welcome your comments at validation@mail.wwpdb.org
A user guide is available at
<http://wwpdb.org/validation/2016/XrayValidationReportHelp>
with specific help available everywhere you see the ⓘ symbol.

The following versions of software and data (see [references ⓘ](#)) were used in the production of this report:

MolProbity : 4.02b-467
Mogul : 1.7 (RC4), CSD as536be (2015)
Xtriage (Phenix) : 1.9-1692
EDS : rb-20026688
Percentile statistics : 20151230.v01 (using entries in the PDB archive December 30th 2015)
Refmac : 5.8.0135
CCP4 : 6.5.0
Ideal geometry (proteins) : Engh & Huber (2001)
Ideal geometry (DNA, RNA) : Parkinson et al. (1996)
Validation Pipeline (wwPDB-VP) : trunk26865

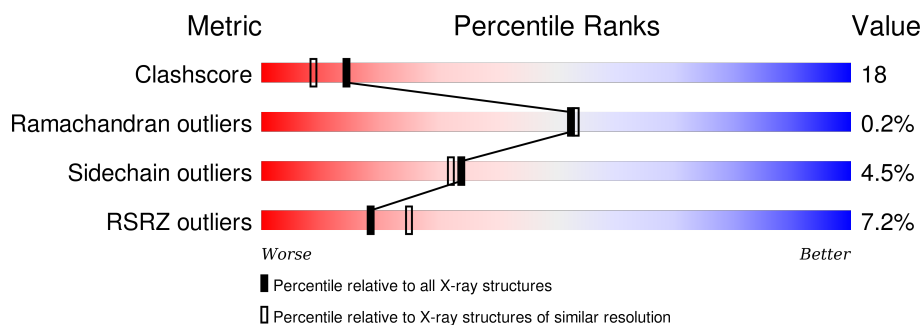
1 Overall quality at a glance

The following experimental techniques were used to determine the structure:

X-RAY DIFFRACTION

The reported resolution of this entry is 2.10 Å.

Percentile scores (ranging between 0-100) for global validation metrics of the entry are shown in the following graphic. The table shows the number of entries on which the scores are based.



Metric	Whole archive (#Entries)	Similar resolution (#Entries, resolution range(Å))
Clashscore	102246	4460 (2.10-2.10)
Ramachandran outliers	100387	4413 (2.10-2.10)
Sidechain outliers	100360	4414 (2.10-2.10)
RSRZ outliers	91569	3948 (2.10-2.10)

The table below summarises the geometric issues observed across the polymeric chains and their fit to the electron density. The red, orange, yellow and green segments on the lower bar indicate the fraction of residues that contain outliers for ≥ 3 , 2, 1 and 0 types of geometric quality criteria. A grey segment represents the fraction of residues that are not modelled. The numeric value for each fraction is indicated below the corresponding segment, with a dot representing fractions $\leq 5\%$. The upper red bar (where present) indicates the fraction of residues that have poor fit to the electron density. The numeric value is given above the bar.

Mol	Chain	Length	Quality of chain
1	A	457	
1	B	457	

The following table lists non-polymeric compounds, carbohydrate monomers and non-standard residues in protein, DNA, RNA chains that are outliers for geometric or electron-density-fit criteria:

Mol	Type	Chain	Res	Chirality	Geometry	Clashes	Electron density
3	ACT	A	458	-	-	X	-

2 Entry composition [i](#)

There are 5 unique types of molecules in this entry. The entry contains 7217 atoms, of which 0 are hydrogens and 0 are deuteriums.

In the tables below, the ZeroOcc column contains the number of atoms modelled with zero occupancy, the AltConf column contains the number of residues with at least one atom in alternate conformation and the Trace column contains the number of residues modelled with at most 2 atoms.

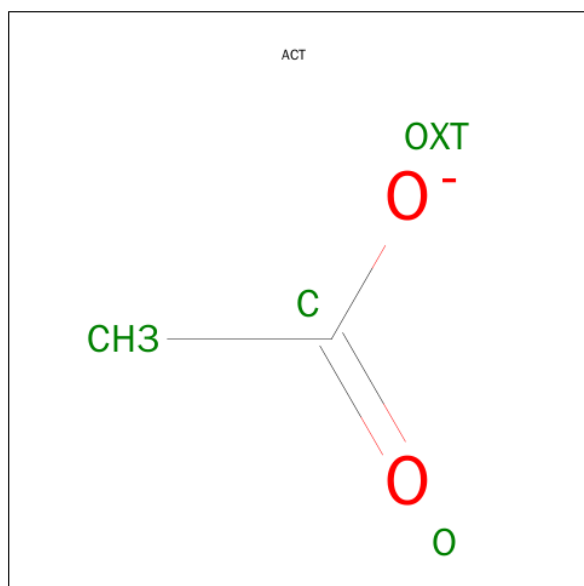
- Molecule 1 is a protein called Adenylosuccinate Synthetase.

Mol	Chain	Residues	Atoms					ZeroOcc	AltConf	Trace
1	A	430	Total	C	N	O	S	0	0	0
			3348	2130	588	618	12			
1	B	431	Total	C	N	O	S	0	0	0
			3353	2133	589	619	12			

- Molecule 2 is MAGNESIUM ION (three-letter code: MG) (formula: Mg).

Mol	Chain	Residues	Atoms		ZeroOcc	AltConf
2	B	1	Total	Mg	0	0
			1	1		

- Molecule 3 is ACETATE ION (three-letter code: ACT) (formula: C₂H₃O₂).



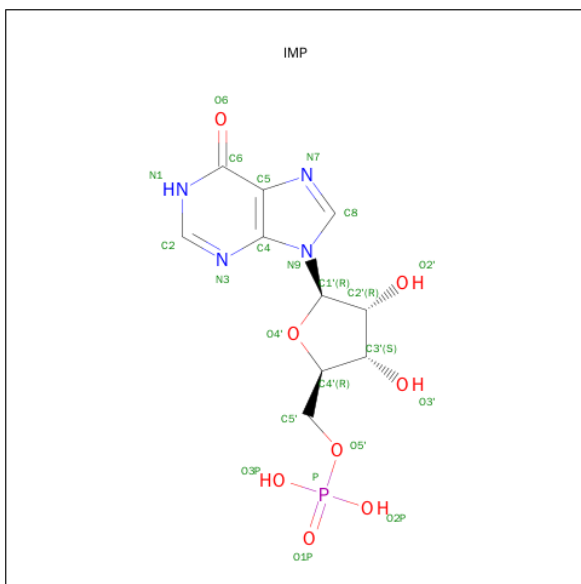
Mol	Chain	Residues	Atoms			ZeroOcc	AltConf
3	A	1	Total	C	O	0	0
			4	2	2		

Continued on next page...

Continued from previous page...

Mol	Chain	Residues	Atoms			ZeroOcc	AltConf
3	A	1	Total	C	O	0	0
			4	2	2		

- Molecule 4 is INOSINIC ACID (three-letter code: IMP) (formula: $C_{10}H_{13}N_4O_8P$).



Mol	Chain	Residues	Atoms					ZeroOcc	AltConf
4	B	1	Total	C	N	O	P	0	0
			23	10	4	8	1		
4	B	1	Total	C	N	O	P	0	0
			23	10	4	8	1		
4	A	1	Total	C	N	O	P	0	0
			23	10	4	8	1		

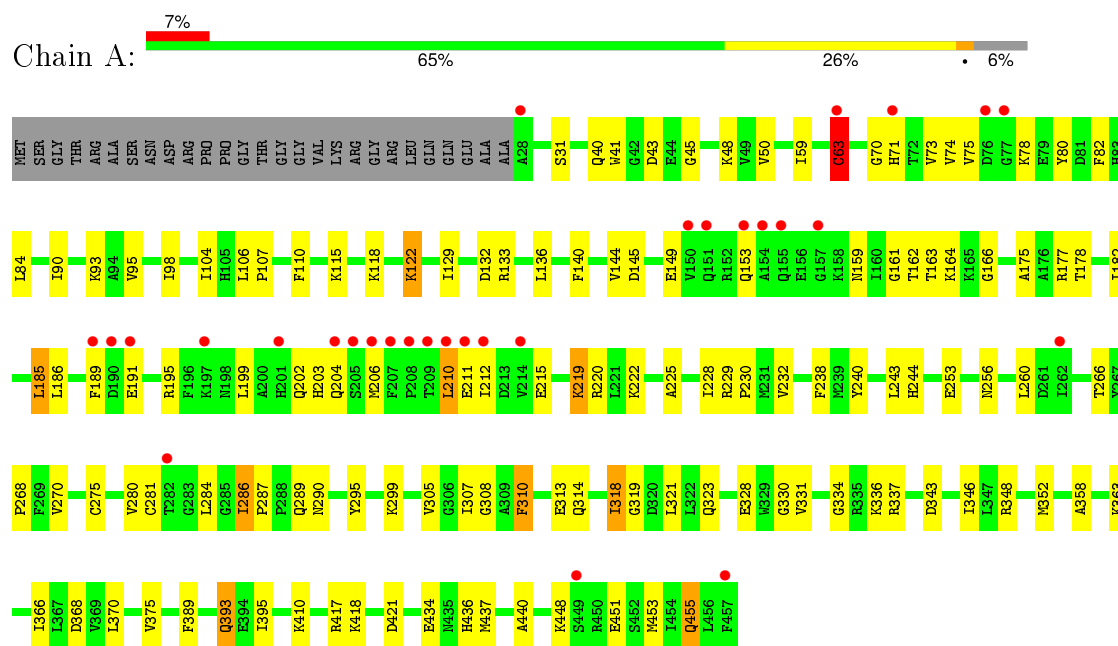
- Molecule 5 is water.

Mol	Chain	Residues	Atoms		ZeroOcc	AltConf
5	A	238	Total	O	0	0
			238	238		
5	B	200	Total	O	0	0
			200	200		

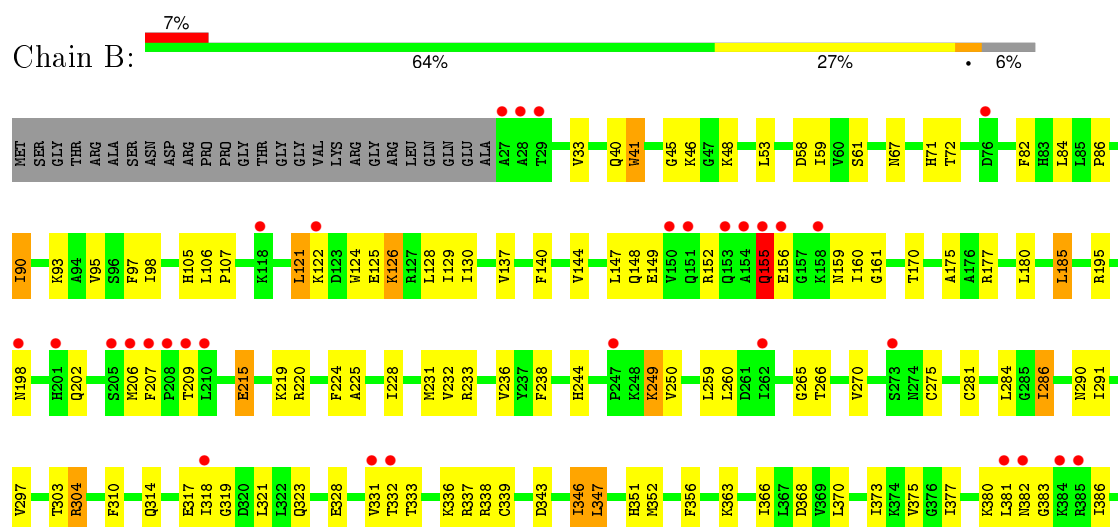
3 Residue-property plots [i](#)

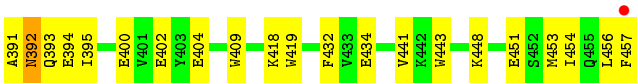
These plots are drawn for all protein, RNA and DNA chains in the entry. The first graphic for a chain summarises the proportions of errors displayed in the second graphic. The second graphic shows the sequence view annotated by issues in geometry and electron density. Residues are color-coded according to the number of geometric quality criteria for which they contain at least one outlier: green = 0, yellow = 1, orange = 2 and red = 3 or more. A red dot above a residue indicates a poor fit to the electron density ($RSRZ > 2$). Stretches of 2 or more consecutive residues without any outlier are shown as a green connector. Residues present in the sample, but not in the model, are shown in grey.

• Molecule 1: Adenylosuccinate Synthetase



• Molecule 1: Adenylosuccinate Synthetase





4 Data and refinement statistics

Property	Value	Source
Space group	C 1 2 1	Depositor
Cell constants a, b, c, α , β , γ	129.89Å 69.99Å 105.33Å 90.00° 95.28° 90.00°	Depositor
Resolution (Å)	5.00 – 2.10 40.81 – 2.10	Depositor EDS
% Data completeness (in resolution range)	(Not available) (5.00-2.10) 93.6 (40.81-2.10)	Depositor EDS
R_{merge}	0.09	Depositor
R_{sym}	(Not available)	Depositor
$\langle I/\sigma(I) \rangle$ ¹	2.27 (at 2.10Å)	Xtriage
Refinement program	CNS	Depositor
R, R_{free}	0.202 , 0.253 0.208 , (Not available)	Depositor DCC
R_{free} test set	No test flags present.	DCC
Wilson B-factor (Å ²)	21.4	Xtriage
Anisotropy	0.346	Xtriage
Bulk solvent k_{sol} (e/Å ³), B_{sol} (Å ²)	0.35 , 46.5	EDS
Estimated twinning fraction	No twinning to report.	Xtriage
L-test for twinning ²	$\langle L \rangle = 0.48$, $\langle L^2 \rangle = 0.31$	Xtriage
Outliers	0 of 51615 reflections	Xtriage
F_o, F_c correlation	0.93	EDS
Total number of atoms	7217	wwPDB-VP
Average B, all atoms (Å ²)	25.0	wwPDB-VP

Xtriage's analysis on translational NCS is as follows: *The largest off-origin peak in the Patterson function is 5.85% of the height of the origin peak. No significant pseudotranslation is detected.*

¹Intensities estimated from amplitudes.

²Theoretical values of $\langle |L| \rangle$, $\langle L^2 \rangle$ for acentric reflections are 0.5, 0.375 respectively for untwinned datasets, and 0.333, 0.2 for perfectly twinned datasets.

5 Model quality [i](#)

5.1 Standard geometry [i](#)

Bond lengths and bond angles in the following residue types are not validated in this section: IMP, MG, ACT

The Z score for a bond length (or angle) is the number of standard deviations the observed value is removed from the expected value. A bond length (or angle) with $|Z| > 5$ is considered an outlier worth inspection. RMSZ is the root-mean-square of all Z scores of the bond lengths (or angles).

Mol	Chain	Bond lengths		Bond angles	
		RMSZ	$\# Z > 5$	RMSZ	$\# Z > 5$
1	A	0.37	1/3418 (0.0%)	0.62	0/4621
1	B	0.33	0/3423	0.59	0/4628
All	All	0.35	1/6841 (0.0%)	0.61	0/9249

All (1) bond length outliers are listed below:

Mol	Chain	Res	Type	Atoms	Z	Observed(Å)	Ideal(Å)
1	A	63	CYS	CB-SG	-7.39	1.69	1.82

There are no bond angle outliers.

There are no chirality outliers.

There are no planarity outliers.

5.2 Too-close contacts [i](#)

In the following table, the Non-H and H(model) columns list the number of non-hydrogen atoms and hydrogen atoms in the chain respectively. The H(added) column lists the number of hydrogen atoms added and optimized by MolProbity. The Clashes column lists the number of clashes within the asymmetric unit, whereas Symm-Clashes lists symmetry related clashes.

Mol	Chain	Non-H	H(model)	H(added)	Clashes	Symm-Clashes
1	A	3348	0	3354	119	0
1	B	3353	0	3359	131	0
2	B	1	0	0	0	0
3	A	8	0	6	3	0
4	A	23	0	11	3	0
4	B	46	0	22	7	0
5	A	238	0	0	6	0
5	B	200	0	0	3	0

Continued on next page...

Continued from previous page...

Mol	Chain	Non-H	H(model)	H(added)	Clashes	Symm-Clashes
All	All	7217	0	6752	244	0

The all-atom clashscore is defined as the number of clashes found per 1000 atoms (including hydrogen atoms). The all-atom clashscore for this structure is 18.

All (244) close contacts within the same asymmetric unit are listed below, sorted by their clash magnitude.

Atom-1	Atom-2	Interatomic distance (Å)	Clash overlap (Å)
1:A:162:THR:HG22	1:A:164:LYS:H	1.24	1.00
1:B:284:LEU:HB2	1:B:286:ILE:HD12	1.51	0.93
1:A:284:LEU:HB2	1:A:286:ILE:HD12	1.52	0.92
1:A:210:LEU:HD13	1:A:212:ILE:HD11	1.56	0.86
1:A:206:MET:HE3	1:B:206:MET:HB2	1.60	0.84
1:A:115:LYS:HA	1:A:118:LYS:HE2	1.59	0.84
1:A:219:LYS:HE3	1:A:219:LYS:HA	1.58	0.84
1:A:84:LEU:HD22	1:A:104:ILE:HD13	1.60	0.83
1:A:178:THR:HG22	1:A:199:LEU:HD13	1.61	0.82
1:B:82:PHE:HZ	1:B:90:ILE:HD13	1.44	0.81
1:B:185:LEU:HD22	1:B:225:ALA:HB2	1.63	0.80
1:A:74:VAL:HG21	1:A:448:LYS:HG2	1.63	0.80
1:B:185:LEU:CD2	1:B:225:ALA:HB2	2.12	0.79
1:B:98:ILE:HD13	1:B:128:LEU:HD11	1.66	0.77
1:B:394:GLU:HG3	1:B:395:ILE:HD12	1.67	0.76
1:B:95:VAL:HG11	1:B:129:ILE:HD12	1.68	0.76
1:B:321:LEU:HD23	1:B:370:LEU:HD21	1.69	0.74
1:B:363:LYS:HB3	1:B:366:ILE:HD13	1.68	0.74
1:A:178:THR:HG21	1:A:202:GLN:OE1	1.90	0.71
1:A:286:ILE:HD13	1:A:286:ILE:H	1.55	0.71
1:A:266:THR:HB	1:A:393:GLN:HG3	1.71	0.70
1:B:48:LYS:NZ	1:B:453:MET:HG2	2.06	0.70
1:A:59:ILE:HD13	1:A:95:VAL:HB	1.74	0.70
1:B:266:THR:HB	1:B:393:GLN:NE2	2.07	0.69
1:A:136:LEU:HD21	1:A:182:ILE:HD13	1.73	0.69
1:A:305:VAL:HB	1:A:337:ARG:HG2	1.74	0.69
1:B:233:ARG:HG3	1:B:233:ARG:HH11	1.57	0.69
1:B:286:ILE:HD13	1:B:286:ILE:H	1.57	0.69
1:B:317:GLU:HG3	1:B:318:ILE:HD12	1.74	0.68
1:A:106:LEU:HD22	1:A:228:ILE:CD1	2.24	0.68
1:A:177:ARG:HH11	4:B:1443:IMP:H5'2	1.58	0.68
1:A:178:THR:CG2	1:A:199:LEU:HD13	2.23	0.68
1:B:61:SER:HB3	1:B:97:PHE:HB3	1.77	0.67

Continued on next page...

Continued from previous page...

Atom-1	Atom-2	Interatomic distance (Å)	Clash overlap (Å)
1:B:266:THR:HB	1:B:393:GLN:HE22	1.60	0.67
1:B:48:LYS:HZ1	1:B:453:MET:HG2	1.57	0.67
1:A:162:THR:HG22	1:A:164:LYS:N	2.06	0.67
1:A:318:ILE:HD13	5:A:888:HOH:O	1.95	0.67
1:A:84:LEU:HD22	1:A:104:ILE:CD1	2.24	0.66
1:A:352:MET:HE2	1:B:236:VAL:HG12	1.79	0.65
1:B:59:ILE:CD1	1:B:95:VAL:HB	2.28	0.64
1:B:82:PHE:CZ	1:B:90:ILE:HD13	2.31	0.64
1:A:82:PHE:HZ	1:A:90:ILE:HD11	1.63	0.64
1:B:98:ILE:CD1	1:B:128:LEU:HD11	2.29	0.63
1:A:84:LEU:CD2	1:A:104:ILE:HD13	2.28	0.63
1:A:417:ARG:HE	1:A:451:GLU:CD	2.02	0.62
1:B:98:ILE:HB	1:B:130:ILE:HD13	1.82	0.62
1:B:144:VAL:O	1:B:148:GLN:HG3	2.01	0.61
1:A:348:ARG:HG3	1:A:437:MET:CE	2.30	0.61
1:B:125:GLU:HG2	1:B:126:LYS:HD3	1.83	0.61
1:B:318:ILE:H	1:B:318:ILE:HD12	1.66	0.60
1:A:210:LEU:HD22	1:A:212:ILE:HD11	1.85	0.59
1:B:129:ILE:HD13	1:B:238:PHE:CE2	2.37	0.59
1:A:210:LEU:HD22	1:A:212:ILE:CD1	2.33	0.59
1:A:240:TYR:CD1	1:B:352:MET:HG2	2.38	0.58
1:B:259:LEU:HD11	1:B:346:ILE:HB	1.86	0.58
1:A:95:VAL:HG11	1:A:129:ILE:HD12	1.85	0.58
1:A:287:PRO:HB2	1:A:289:GLN:OE1	2.04	0.58
1:A:110:PHE:HZ	1:A:228:ILE:HG13	1.69	0.58
1:B:59:ILE:HD13	1:B:95:VAL:HB	1.85	0.57
1:A:63:CYS:SG	1:A:280:VAL:HA	2.44	0.57
1:A:153:GLN:HB2	1:A:159:ASN:HD22	1.69	0.57
1:A:348:ARG:HG3	1:A:437:MET:HE1	1.87	0.57
1:B:41:TRP:CD2	1:B:304:ARG:HG2	2.40	0.57
1:A:455:GLN:HE21	1:A:455:GLN:HA	1.70	0.57
1:A:287:PRO:HG2	1:A:290:ASN:OD1	2.05	0.56
1:B:260:LEU:O	1:B:270:VAL:HB	2.05	0.56
1:B:346:ILE:HG13	1:B:347:LEU:N	2.21	0.56
1:A:281:CYS:HA	1:A:286:ILE:HD13	1.87	0.56
1:B:281:CYS:HA	1:B:286:ILE:HD13	1.88	0.56
1:B:351:HIS:HD2	1:B:356:PHE:H	1.54	0.55
1:B:381:LEU:HG	1:B:382:ASN:H	1.71	0.55
1:A:284:LEU:HB2	1:A:286:ILE:CD1	2.33	0.55
1:B:185:LEU:HD22	1:B:225:ALA:CB	2.33	0.55
1:A:63:CYS:HB2	5:A:505:HOH:O	2.06	0.55

Continued on next page...

Continued from previous page...

Atom-1	Atom-2	Interatomic distance (Å)	Clash overlap (Å)
1:A:348:ARG:HH21	1:A:436:HIS:HB3	1.71	0.55
1:B:33:VAL:HG12	1:B:250:VAL:HB	1.87	0.55
1:A:363:LYS:HB3	1:A:366:ILE:HD13	1.89	0.55
1:B:228:ILE:HG13	1:B:231:MET:HE2	1.88	0.54
1:A:204:GLN:CG	1:A:212:ILE:HD13	2.36	0.54
1:A:73:VAL:HG12	1:A:75:VAL:HG23	1.89	0.54
1:A:50:VAL:HG21	1:A:253:GLU:HG3	1.90	0.54
1:A:260:LEU:O	1:A:270:VAL:HB	2.08	0.54
1:B:375:VAL:HG11	1:B:432:PHE:CE2	2.43	0.54
1:B:33:VAL:CG2	1:B:291:ILE:HD13	2.39	0.53
1:B:332:THR:OG1	1:B:333:THR:N	2.41	0.53
1:A:106:LEU:HB2	1:A:107:PRO:HD3	1.91	0.53
1:A:189:PHE:CZ	1:A:222:LYS:HB2	2.43	0.53
1:B:434:GLU:HG2	1:B:441:VAL:HG23	1.90	0.53
1:A:115:LYS:HB2	1:A:115:LYS:NZ	2.23	0.53
1:A:295:TYR:CD1	1:A:358:ALA:HB3	2.44	0.53
1:B:380:LYS:HE3	1:B:400:GLU:HG2	1.91	0.53
1:B:46:LYS:HE2	1:B:71:HIS:NE2	2.24	0.52
1:A:211:GLU:C	1:A:212:ILE:HD12	2.29	0.52
1:A:204:GLN:HG3	1:A:212:ILE:HD13	1.91	0.52
1:A:210:LEU:CD1	1:A:212:ILE:HD11	2.35	0.52
1:A:59:ILE:CD1	1:A:95:VAL:HB	2.37	0.52
1:A:318:ILE:N	1:A:318:ILE:CD1	2.71	0.52
1:B:244:HIS:HE1	5:B:562:HOH:O	1.91	0.52
1:B:125:GLU:OE1	1:B:126:LYS:HE2	2.09	0.52
1:A:448:LYS:HB3	1:A:448:LYS:NZ	2.23	0.52
1:A:295:TYR:CE1	1:A:358:ALA:HB3	2.45	0.52
1:B:93:LYS:HG2	1:B:93:LYS:O	2.09	0.52
1:A:149:GLU:HG2	5:A:793:HOH:O	2.09	0.52
1:A:256:ASN:HB2	1:A:275:CYS:SG	2.50	0.51
1:B:377:ILE:HD11	1:B:402:GLU:CD	2.30	0.51
1:B:453:MET:C	1:B:454:ILE:HD12	2.31	0.51
1:A:368:ASP:O	1:A:410:LYS:HA	2.11	0.51
1:A:115:LYS:HA	1:A:118:LYS:CE	2.36	0.51
1:B:215:GLU:O	1:B:219:LYS:HG3	2.11	0.51
1:B:220:ARG:HD3	5:B:816:HOH:O	2.11	0.50
1:B:180:LEU:CD2	1:B:195:ARG:HD3	2.42	0.50
1:B:318:ILE:HD12	1:B:318:ILE:N	2.26	0.50
1:A:346:ILE:HG22	1:A:389:PHE:CE1	2.46	0.50
1:B:67:ASN:HB3	1:B:84:LEU:HB2	1.94	0.50
1:B:58:ASP:O	1:B:59:ILE:HD13	2.11	0.50

Continued on next page...

Continued from previous page...

Atom-1	Atom-2	Interatomic distance (Å)	Clash overlap (Å)
1:A:331:VAL:HA	5:A:882:HOH:O	2.11	0.50
1:B:33:VAL:HG22	1:B:291:ILE:HD13	1.94	0.49
1:B:149:GLU:OE1	1:B:161:GLY:N	2.45	0.49
1:B:148:GLN:HG2	1:B:207:PHE:CE2	2.47	0.49
1:A:219:LYS:CA	1:A:219:LYS:HE3	2.36	0.49
1:A:129:ILE:HD13	1:A:238:PHE:CE2	2.48	0.49
1:B:175:ALA:O	1:B:177:ARG:HD2	2.12	0.49
1:A:145:ASP:HB2	1:A:166:GLY:HA2	1.95	0.49
1:B:121:LEU:HD22	1:B:124:TRP:HB3	1.95	0.48
1:A:162:THR:HG22	1:A:163:THR:N	2.28	0.48
4:A:460:IMP:O2P	1:B:177:ARG:NH2	2.45	0.48
1:B:105:HIS:CD2	1:B:107:PRO:HD2	2.47	0.48
1:B:107:PRO:HB3	1:B:220:ARG:HH22	1.79	0.48
1:A:98:ILE:HG21	1:A:104:ILE:HD11	1.95	0.48
1:B:454:ILE:HD12	1:B:454:ILE:N	2.28	0.48
1:A:40:GLN:HG2	1:A:346:ILE:HD11	1.96	0.48
1:A:70:GLY:HA3	1:A:331:VAL:CG2	2.44	0.48
1:B:343:ASP:O	1:B:347:LEU:HD22	2.14	0.48
1:A:314:GLN:O	1:A:319:GLY:HA3	2.13	0.48
1:B:121:LEU:CD2	1:B:124:TRP:HB3	2.43	0.48
1:A:229:ARG:N	1:A:230:PRO:HD2	2.28	0.48
1:A:281:CYS:HA	1:A:286:ILE:CD1	2.44	0.48
1:A:310:PHE:CG	1:A:313:GLU:HB2	2.49	0.48
1:A:244:HIS:HE1	5:A:847:HOH:O	1.96	0.48
1:B:185:LEU:HD21	1:B:225:ALA:HB2	1.91	0.47
1:A:122:LYS:O	1:A:122:LYS:HD2	2.14	0.47
1:B:207:PHE:C	1:B:209:THR:H	2.17	0.47
1:B:106:LEU:HD13	1:B:224:PHE:HB3	1.95	0.47
1:A:149:GLU:OE1	1:A:161:GLY:N	2.45	0.47
1:B:249:LYS:NZ	1:B:249:LYS:HB3	2.29	0.47
1:B:375:VAL:HG13	1:B:404:GLU:HB3	1.97	0.47
1:B:331:VAL:HG13	1:B:332:THR:HG23	1.97	0.47
1:A:418:LYS:HG2	1:A:421:ASP:OD2	2.15	0.47
1:B:98:ILE:HB	1:B:130:ILE:CD1	2.44	0.47
1:B:456:LEU:O	1:B:457:PHE:HB3	2.14	0.47
1:A:177:ARG:NH1	4:B:1443:IMP:O1P	2.47	0.47
1:A:140:PHE:O	1:A:144:VAL:HG23	2.14	0.47
1:B:72:THR:HB	4:B:1452:IMP:H3'	1.97	0.47
1:B:228:ILE:HA	1:B:231:MET:HE2	1.96	0.47
1:B:53:LEU:HD21	1:B:443:TRP:CH2	2.50	0.46
1:A:186:LEU:HD21	1:A:229:ARG:HA	1.97	0.46

Continued on next page...

Continued from previous page...

Atom-1	Atom-2	Interatomic distance (Å)	Clash overlap (Å)
1:B:180:LEU:HD21	1:B:195:ARG:HB3	1.98	0.46
1:B:198:ASN:O	1:B:202:GLN:HG3	2.14	0.46
1:B:370:LEU:HB2	1:B:373:ILE:HD11	1.98	0.46
1:A:191:GLU:OE2	1:A:195:ARG:NH2	2.49	0.46
1:B:160:ILE:HG22	4:B:1443:IMP:O3'	2.16	0.46
1:B:368:ASP:HA	1:B:409:TRP:NE1	2.31	0.46
1:A:78:LYS:HE3	1:A:80:TYR:OH	2.16	0.45
1:B:97:PHE:C	1:B:98:ILE:HD12	2.36	0.45
1:A:177:ARG:NH1	4:B:1443:IMP:H5'2	2.29	0.45
1:B:46:LYS:HG2	1:B:297:VAL:HG21	1.97	0.45
1:B:137:VAL:HG22	1:B:170:THR:OG1	2.16	0.45
1:B:323:GLN:NE2	1:B:336:LYS:HD3	2.31	0.45
1:B:155:GLN:HE21	1:B:156:GLU:HG3	1.80	0.45
1:B:232:VAL:O	1:B:233:ARG:HG3	2.16	0.45
1:A:199:LEU:HD11	1:A:203:HIS:HE1	1.81	0.45
1:B:140:PHE:O	1:B:144:VAL:HG23	2.17	0.45
1:A:93:LYS:HG2	5:A:761:HOH:O	2.17	0.45
1:B:314:GLN:O	1:B:319:GLY:HA3	2.16	0.45
1:A:45:GLY:HA2	3:A:458:ACT:H2	1.98	0.45
1:B:48:LYS:CE	1:B:453:MET:HG2	2.47	0.45
1:A:43:ASP:O	1:A:299:LYS:HE2	2.17	0.45
1:B:40:GLN:HA	1:B:346:ILE:CD1	2.46	0.45
1:B:228:ILE:HG13	1:B:231:MET:CE	2.46	0.45
1:A:185:LEU:HD22	1:A:225:ALA:HB2	1.98	0.45
1:B:434:GLU:CG	1:B:441:VAL:HG23	2.46	0.45
1:A:43:ASP:OD2	4:A:460:IMP:H2	2.16	0.45
1:A:75:VAL:O	1:A:78:LYS:HB3	2.16	0.45
1:A:328:GLU:HB3	1:A:337:ARG:HB2	1.98	0.45
1:A:307:ILE:HG22	1:A:308:GLY:N	2.32	0.45
1:B:404:GLU:HG2	1:B:432:PHE:CZ	2.52	0.44
1:B:392:ASN:OD1	1:B:394:GLU:HG2	2.18	0.44
1:B:290:ASN:ND2	5:B:562:HOH:O	2.50	0.44
1:B:448:LYS:HG2	4:B:1452:IMP:O2'	2.18	0.44
1:A:132:ASP:HB3	1:A:232:VAL:CG1	2.48	0.44
1:A:74:VAL:HA	1:A:78:LYS:O	2.17	0.44
1:A:48:LYS:HD3	1:A:453:MET:HE3	1.98	0.44
1:B:180:LEU:HD21	1:B:195:ARG:HD3	1.99	0.44
1:B:84:LEU:O	1:B:84:LEU:HD13	2.18	0.44
1:A:133:ARG:CZ	1:B:391:ALA:HB2	2.48	0.44
1:B:86:PRO:HD3	1:B:98:ILE:HD11	2.00	0.44
1:B:152:ARG:HG2	1:B:159:ASN:HA	1.99	0.44

Continued on next page...

Continued from previous page...

Atom-1	Atom-2	Interatomic distance (Å)	Clash overlap (Å)
1:A:286:ILE:CD1	1:A:286:ILE:H	2.29	0.43
1:B:98:ILE:N	1:B:98:ILE:HD12	2.32	0.43
1:B:303:THR:HA	1:B:338:ARG:O	2.18	0.43
1:A:323:GLN:HG3	1:A:336:LYS:HD3	2.00	0.43
1:B:121:LEU:HD23	1:B:122:LYS:N	2.34	0.43
1:A:348:ARG:HG3	1:A:437:MET:HE3	1.98	0.43
1:B:386:ILE:O	1:B:386:ILE:HG13	2.19	0.43
1:A:268:PRO:HB2	1:B:177:ARG:HB3	2.01	0.43
1:B:67:ASN:CB	1:B:84:LEU:HB2	2.49	0.43
1:B:418:LYS:HE2	1:B:418:LYS:HB3	1.78	0.43
1:B:233:ARG:HG3	1:B:233:ARG:NH1	2.27	0.42
1:A:310:PHE:CD2	1:A:313:GLU:HB2	2.54	0.42
1:A:43:ASP:HA	3:A:458:ACT:H3	2.02	0.42
1:A:206:MET:HE2	1:B:202:GLN:O	2.18	0.42
1:A:417:ARG:HD2	1:A:451:GLU:HG2	2.01	0.42
1:A:212:ILE:N	1:A:212:ILE:HD12	2.35	0.42
1:A:434:GLU:HG3	1:A:440:ALA:HA	2.01	0.42
1:A:162:THR:CG2	1:A:163:THR:N	2.81	0.42
1:A:343:ASP:O	1:A:346:ILE:HG13	2.20	0.42
1:A:346:ILE:HD12	1:A:346:ILE:C	2.40	0.42
1:B:129:ILE:HD12	1:B:238:PHE:CZ	2.54	0.42
1:A:393:GLN:HE21	1:A:393:GLN:HB3	1.59	0.42
1:A:330:GLY:O	1:A:334:GLY:N	2.53	0.42
1:B:129:ILE:CD1	1:B:238:PHE:CE2	3.02	0.42
1:B:375:VAL:HG12	1:B:404:GLU:O	2.20	0.42
1:B:155:GLN:C	1:B:155:GLN:HE21	2.24	0.41
1:A:321:LEU:HD23	1:A:370:LEU:HD21	2.02	0.41
1:B:45:GLY:HA2	4:B:1452:IMP:O5'	2.20	0.41
1:B:95:VAL:HG11	1:B:129:ILE:CD1	2.45	0.41
1:B:40:GLN:HA	1:B:346:ILE:HD11	2.03	0.41
1:B:259:LEU:HA	1:B:265:GLY:HA2	2.03	0.41
1:A:71:HIS:CD2	3:A:458:ACT:OXT	2.74	0.41
1:B:225:ALA:HA	1:B:228:ILE:HG22	2.03	0.41
1:A:31:SER:O	1:A:243:LEU:HD22	2.21	0.41
1:B:286:ILE:CD1	1:B:286:ILE:H	2.29	0.40
1:B:419:TRP:HB2	1:B:456:LEU:HD22	2.03	0.40
1:B:323:GLN:HG3	1:B:339:CYS:SG	2.61	0.40
1:B:155:GLN:NE2	1:B:156:GLU:HG3	2.36	0.40
1:B:370:LEU:HB2	1:B:373:ILE:CD1	2.52	0.40
1:A:328:GLU:OE1	1:A:337:ARG:HD2	2.22	0.40
1:A:175:ALA:O	1:A:177:ARG:HD2	2.21	0.40

Continued on next page...

Continued from previous page...

Atom-1	Atom-2	Interatomic distance (Å)	Clash overlap (Å)
1:B:220:ARG:HH21	1:B:224:PHE:HZ	1.68	0.40
1:A:162:THR:HG23	4:A:460:IMP:O1P	2.22	0.40
1:A:153:GLN:HB2	1:A:159:ASN:ND2	2.35	0.40
1:B:281:CYS:HA	1:B:286:ILE:CD1	2.52	0.40
1:B:125:GLU:CD	1:B:125:GLU:H	2.24	0.40
1:B:328:GLU:HB3	1:B:337:ARG:HB2	2.03	0.40

There are no symmetry-related clashes.

5.3 Torsion angles [i](#)

5.3.1 Protein backbone [i](#)

In the following table, the Percentiles column shows the percent Ramachandran outliers of the chain as a percentile score with respect to all X-ray entries followed by that with respect to entries of similar resolution.

The Analysed column shows the number of residues for which the backbone conformation was analysed, and the total number of residues.

Mol	Chain	Analysed	Favoured	Allowed	Outliers	Percentiles	
1	A	428/457 (94%)	414 (97%)	14 (3%)	0	100	100
1	B	429/457 (94%)	408 (95%)	19 (4%)	2 (0%)	34	30
All	All	857/914 (94%)	822 (96%)	33 (4%)	2 (0%)	52	53

All (2) Ramachandran outliers are listed below:

Mol	Chain	Res	Type
1	B	155	GLN
1	B	383	GLY

5.3.2 Protein sidechains [i](#)

In the following table, the Percentiles column shows the percent sidechain outliers of the chain as a percentile score with respect to all X-ray entries followed by that with respect to entries of similar resolution.

The Analysed column shows the number of residues for which the sidechain conformation was analysed, and the total number of residues.

Mol	Chain	Analysed	Rotameric	Outliers	Percentiles	
1	A	354/373 (95%)	339 (96%)	15 (4%)	36	35
1	B	354/373 (95%)	337 (95%)	17 (5%)	31	29
All	All	708/746 (95%)	676 (96%)	32 (4%)	34	32

All (32) residues with a non-rotameric sidechain are listed below:

Mol	Chain	Res	Type
1	A	41	TRP
1	A	63	CYS
1	A	122	LYS
1	A	185	LEU
1	A	210	LEU
1	A	215	GLU
1	A	219	LYS
1	A	220	ARG
1	A	286	ILE
1	A	310	PHE
1	A	318	ILE
1	A	375	VAL
1	A	393	GLN
1	A	395	ILE
1	A	455	GLN
1	B	41	TRP
1	B	90	ILE
1	B	121	LEU
1	B	126	LYS
1	B	147	LEU
1	B	155	GLN
1	B	185	LEU
1	B	215	GLU
1	B	249	LYS
1	B	275	CYS
1	B	286	ILE
1	B	304	ARG
1	B	310	PHE
1	B	346	ILE
1	B	347	LEU
1	B	392	ASN
1	B	451	GLU

Some sidechains can be flipped to improve hydrogen bonding and reduce clashes. All (17) such sidechains are listed below:

Mol	Chain	Res	Type
1	A	64	GLN
1	A	217	GLN
1	A	244	HIS
1	A	397	GLN
1	A	455	GLN
1	B	64	GLN
1	B	155	GLN
1	B	198	ASN
1	B	217	GLN
1	B	244	HIS
1	B	290	ASN
1	B	323	GLN
1	B	327	HIS
1	B	351	HIS
1	B	393	GLN
1	B	427	GLN
1	B	455	GLN

5.3.3 RNA [i](#)

There are no RNA molecules in this entry.

5.4 Non-standard residues in protein, DNA, RNA chains [i](#)

There are no non-standard protein/DNA/RNA residues in this entry.

5.5 Carbohydrates [i](#)

There are no carbohydrates in this entry.

5.6 Ligand geometry [i](#)

Of 6 ligands modelled in this entry, 1 is monoatomic - leaving 5 for Mogul analysis.

In the following table, the Counts columns list the number of bonds (or angles) for which Mogul statistics could be retrieved, the number of bonds (or angles) that are observed in the model and the number of bonds (or angles) that are defined in the chemical component dictionary. The Link column lists molecule types, if any, to which the group is linked. The Z score for a bond length (or angle) is the number of standard deviations the observed value is removed from the expected value. A bond length (or angle) with $|Z| > 2$ is considered an outlier worth inspection. RMSZ is the root-mean-square of all Z scores of the bond lengths (or angles).

Mol	Type	Chain	Res	Link	Bond lengths			Bond angles		
					Counts	RMSZ	# Z > 2	Counts	RMSZ	# Z > 2
3	ACT	A	458	-	1,3,3	2.60	1 (100%)	0,3,3	0.00	-
3	ACT	A	459	-	1,3,3	2.30	1 (100%)	0,3,3	0.00	-
4	IMP	A	460	-	20,25,25	0.64	0	22,38,38	0.97	1 (4%)
4	IMP	B	1443	-	20,25,25	0.69	0	22,38,38	1.01	1 (4%)
4	IMP	B	1452	2	20,25,25	0.70	0	22,38,38	0.98	1 (4%)

In the following table, the Chirals column lists the number of chiral outliers, the number of chiral centers analysed, the number of these observed in the model and the number defined in the chemical component dictionary. Similar counts are reported in the Torsion and Rings columns. '-' means no outliers of that kind were identified.

Mol	Type	Chain	Res	Link	Chirals	Torsions	Rings
3	ACT	A	458	-	-	0/0/0/0	0/0/0/0
3	ACT	A	459	-	-	0/0/0/0	0/0/0/0
4	IMP	A	460	-	-	0/6/26/26	0/3/3/3
4	IMP	B	1443	-	-	0/6/26/26	0/3/3/3
4	IMP	B	1452	2	-	0/6/26/26	0/3/3/3

All (2) bond length outliers are listed below:

Mol	Chain	Res	Type	Atoms	Z	Observed(Å)	Ideal(Å)
3	A	459	ACT	CH3-C	2.30	1.52	1.48
3	A	458	ACT	CH3-C	2.60	1.52	1.48

All (3) bond angle outliers are listed below:

Mol	Chain	Res	Type	Atoms	Z	Observed(°)	Ideal(°)
4	A	460	IMP	C6-C5-C4	-3.34	116.91	120.90
4	B	1443	IMP	C6-C5-C4	-3.30	116.96	120.90
4	B	1452	IMP	C6-C5-C4	-3.24	117.02	120.90

There are no chirality outliers.

There are no torsion outliers.

There are no ring outliers.

4 monomers are involved in 13 short contacts:

Mol	Chain	Res	Type	Clashes	Symm-Clashes
3	A	458	ACT	3	0
4	A	460	IMP	3	0

Continued on next page...

Continued from previous page...

Mol	Chain	Res	Type	Clashes	Symm-Clashes
4	B	1443	IMP	4	0
4	B	1452	IMP	3	0

5.7 Other polymers [i](#)

There are no such residues in this entry.

5.8 Polymer linkage issues [i](#)

There are no chain breaks in this entry.

6 Fit of model and data ⓘ

6.1 Protein, DNA and RNA chains ⓘ

In the following table, the column labelled ‘#RSRZ> 2’ contains the number (and percentage) of RSRZ outliers, followed by percent RSRZ outliers for the chain as percentile scores relative to all X-ray entries and entries of similar resolution. The OWAB column contains the minimum, median, 95th percentile and maximum values of the occupancy-weighted average B-factor per residue. The column labelled ‘Q< 0.9’ lists the number of (and percentage) of residues with an average occupancy less than 0.9.

Mol	Chain	Analysed	<RSRZ>	#RSRZ>2	OWAB(Å ²)	Q<0.9
1	A	430/457 (94%)	0.43	30 (6%) 19 26	11, 21, 42, 59	0
1	B	431/457 (94%)	0.63	32 (7%) 17 24	12, 23, 46, 66	0
All	All	861/914 (94%)	0.53	62 (7%) 18 25	11, 22, 44, 66	0

All (62) RSRZ outliers are listed below:

Mol	Chain	Res	Type	RSRZ
1	B	27	ALA	6.7
1	B	331	VAL	6.0
1	B	207	PHE	5.9
1	A	154	ALA	5.8
1	A	77	GLY	5.4
1	A	207	PHE	5.3
1	B	154	ALA	5.3
1	A	457	PHE	5.3
1	A	212	ILE	5.0
1	B	155	GLN	4.9
1	B	156	GLU	4.8
1	A	155	GLN	4.7
1	B	150	VAL	4.2
1	B	381	LEU	4.0
1	B	209	THR	3.9
1	A	201	HIS	3.9
1	B	29	THR	3.9
1	A	206	MET	3.8
1	B	28	ALA	3.7
1	A	28	ALA	3.7
1	B	457	PHE	3.7
1	B	382	ASN	3.6
1	B	332	THR	3.4
1	A	71	HIS	3.2

Continued on next page...

Continued from previous page...

Mol	Chain	Res	Type	RSRZ
1	B	262	ILE	3.2
1	A	63	CYS	3.2
1	A	211	GLU	3.1
1	A	151	GLN	3.1
1	A	208	PRO	3.1
1	A	150	VAL	3.0
1	A	76	ASP	3.0
1	B	201	HIS	3.0
1	B	76	ASP	3.0
1	B	206	MET	2.9
1	A	191	GLU	2.9
1	A	282	THR	2.8
1	A	209	THR	2.8
1	B	384	LYS	2.7
1	A	190	ASP	2.7
1	B	122	LYS	2.6
1	B	158	LYS	2.6
1	A	205	SER	2.6
1	A	157	GLY	2.6
1	A	204	GLN	2.5
1	B	385	ARG	2.5
1	B	198	ASN	2.4
1	B	118	LYS	2.4
1	A	262	ILE	2.3
1	B	273	SER	2.3
1	A	449	SER	2.2
1	B	205	SER	2.2
1	B	210	LEU	2.2
1	B	247	PRO	2.2
1	A	189	PHE	2.2
1	B	208	PRO	2.2
1	A	210	LEU	2.1
1	B	151	GLN	2.1
1	B	318	ILE	2.1
1	A	153	GLN	2.1
1	B	153	GLN	2.1
1	A	197	LYS	2.1
1	A	214	VAL	2.0

6.2 Non-standard residues in protein, DNA, RNA chains ⓘ

There are no non-standard protein/DNA/RNA residues in this entry.

6.3 Carbohydrates [i](#)

There are no carbohydrates in this entry.

6.4 Ligands [i](#)

In the following table, the Atoms column lists the number of modelled atoms in the group and the number defined in the chemical component dictionary. LLDF column lists the quality of electron density of the group with respect to its neighbouring residues in protein, DNA or RNA chains. The B-factors column lists the minimum, median, 95th percentile and maximum values of B factors of atoms in the group. The column labelled 'Q< 0.9' lists the number of atoms with occupancy less than 0.9.

Mol	Type	Chain	Res	Atoms	RSCC	RSR	LLDF	B-factors(\AA^2)	Q<0.9
3	ACT	A	458	4/4	0.94	0.20	0.83	17,21,22,24	0
3	ACT	A	459	4/4	0.98	0.13	0.16	12,14,15,16	0
4	IMP	B	1452	23/23	0.94	0.12	0.13	20,25,27,28	0
4	IMP	A	460	23/23	0.97	0.12	-0.98	13,19,22,26	0
4	IMP	B	1443	23/23	0.95	0.12	-1.07	19,22,24,27	0
2	MG	B	1442	1/1	0.93	0.12	-	27,27,27,27	0

6.5 Other polymers [i](#)

There are no such residues in this entry.