



Full wwPDB X-ray Structure Validation Report ⓘ

Feb 1, 2016 – 05:40 PM GMT

PDB ID : 4J51
Title : Crystal structure of protein tyrosine phosphatase Lyp catalytic domain complex with small molecular inhibitor L75N04
Authors : Liu, D.; He, Y.; Zhang, Z.-Y.
Deposited on : 2013-02-07
Resolution : 2.30 Å(reported)

This is a Full wwPDB X-ray Structure Validation Report for a publicly released PDB entry.
We welcome your comments at validation@mail.wwpdb.org
A user guide is available at
<http://wwpdb.org/validation/2016/XrayValidationReportHelp>
with specific help available everywhere you see the ⓘ symbol.

The following versions of software and data (see [references ⓘ](#)) were used in the production of this report:

MolProbity : 4.02b-467
Mogul : 1.7 (RC4), CSD as536be (2015)
Xtriage (Phenix) : 1.9-1692
EDS : rb-20026688
Percentile statistics : 20151230.v01 (using entries in the PDB archive December 30th 2015)
Refmac : 5.8.0135
CCP4 : 6.5.0
Ideal geometry (proteins) : Engh & Huber (2001)
Ideal geometry (DNA, RNA) : Parkinson et al. (1996)
Validation Pipeline (wwPDB-VP) : trunk26865

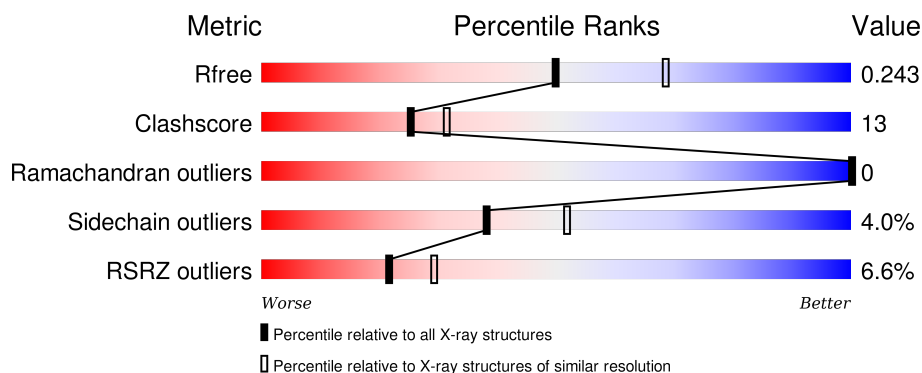
1 Overall quality at a glance

The following experimental techniques were used to determine the structure:

X-RAY DIFFRACTION

The reported resolution of this entry is 2.30 Å.

Percentile scores (ranging between 0-100) for global validation metrics of the entry are shown in the following graphic. The table shows the number of entries on which the scores are based.



Metric	Whole archive (#Entries)	Similar resolution (#Entries, resolution range(Å))
R_{free}	91344	3852 (2.30-2.30)
Clashscore	102246	4452 (2.30-2.30)
Ramachandran outliers	100387	4410 (2.30-2.30)
Sidechain outliers	100360	4409 (2.30-2.30)
RSRZ outliers	91569	3857 (2.30-2.30)

The table below summarises the geometric issues observed across the polymeric chains and their fit to the electron density. The red, orange, yellow and green segments on the lower bar indicate the fraction of residues that contain outliers for ≥ 3 , 2, 1 and 0 types of geometric quality criteria. A grey segment represents the fraction of residues that are not modelled. The numeric value for each fraction is indicated below the corresponding segment, with a dot representing fractions $\leq 5\%$. The upper red bar (where present) indicates the fraction of residues that have poor fit to the electron density. The numeric value is given above the bar.

Mol	Chain	Length	Quality of chain
1	A	326	
1	B	326	

2 Entry composition

There are 3 unique types of molecules in this entry. The entry contains 5116 atoms, of which 0 are hydrogens and 0 are deuteriums.

In the tables below, the ZeroOcc column contains the number of atoms modelled with zero occupancy, the AltConf column contains the number of residues with at least one atom in alternate conformation and the Trace column contains the number of residues modelled with at most 2 atoms.

- Molecule 1 is a protein called Tyrosine-protein phosphatase non-receptor type 22.

Mol	Chain	Residues	Atoms					ZeroOcc	AltConf	Trace
1	A	302	Total	C	N	O	S	0	0	0
			2498	1601	413	467	17			
1	B	302	Total	C	N	O	S	0	0	0
			2498	1601	413	467	17			

There are 46 discrepancies between the modelled and reference sequences:

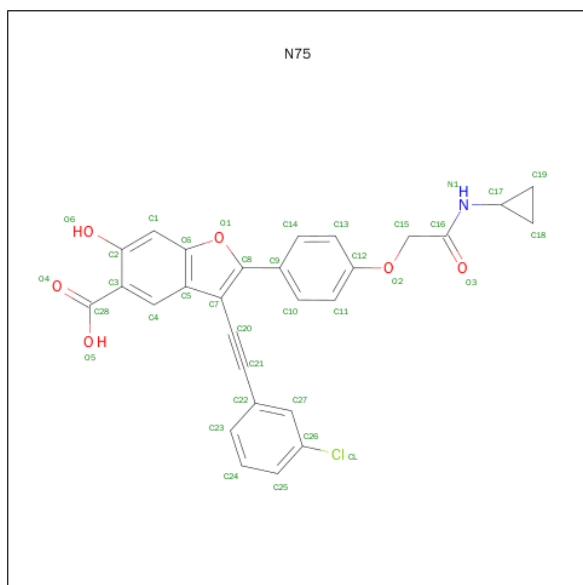
Chain	Residue	Modelled	Actual	Comment	Reference
A	-22	MET	-	EXPRESSION TAG	UNP Q9Y2R2
A	-21	GLY	-	EXPRESSION TAG	UNP Q9Y2R2
A	-20	SER	-	EXPRESSION TAG	UNP Q9Y2R2
A	-19	SER	-	EXPRESSION TAG	UNP Q9Y2R2
A	-18	HIS	-	EXPRESSION TAG	UNP Q9Y2R2
A	-17	HIS	-	EXPRESSION TAG	UNP Q9Y2R2
A	-16	HIS	-	EXPRESSION TAG	UNP Q9Y2R2
A	-15	HIS	-	EXPRESSION TAG	UNP Q9Y2R2
A	-14	HIS	-	EXPRESSION TAG	UNP Q9Y2R2
A	-13	HIS	-	EXPRESSION TAG	UNP Q9Y2R2
A	-12	SER	-	EXPRESSION TAG	UNP Q9Y2R2
A	-11	SER	-	EXPRESSION TAG	UNP Q9Y2R2
A	-10	GLY	-	EXPRESSION TAG	UNP Q9Y2R2
A	-9	LEU	-	EXPRESSION TAG	UNP Q9Y2R2
A	-8	VAL	-	EXPRESSION TAG	UNP Q9Y2R2
A	-7	PRO	-	EXPRESSION TAG	UNP Q9Y2R2
A	-6	ARG	-	EXPRESSION TAG	UNP Q9Y2R2
A	-5	GLY	-	EXPRESSION TAG	UNP Q9Y2R2
A	-4	SER	-	EXPRESSION TAG	UNP Q9Y2R2
A	-3	HIS	-	EXPRESSION TAG	UNP Q9Y2R2
A	-2	MET	-	EXPRESSION TAG	UNP Q9Y2R2
A	-1	ALA	-	EXPRESSION TAG	UNP Q9Y2R2
A	0	SER	-	EXPRESSION TAG	UNP Q9Y2R2
B	-22	MET	-	EXPRESSION TAG	UNP Q9Y2R2
B	-21	GLY	-	EXPRESSION TAG	UNP Q9Y2R2

Continued on next page...

Continued from previous page...

Chain	Residue	Modelled	Actual	Comment	Reference
B	-20	SER	-	EXPRESSION TAG	UNP Q9Y2R2
B	-19	SER	-	EXPRESSION TAG	UNP Q9Y2R2
B	-18	HIS	-	EXPRESSION TAG	UNP Q9Y2R2
B	-17	HIS	-	EXPRESSION TAG	UNP Q9Y2R2
B	-16	HIS	-	EXPRESSION TAG	UNP Q9Y2R2
B	-15	HIS	-	EXPRESSION TAG	UNP Q9Y2R2
B	-14	HIS	-	EXPRESSION TAG	UNP Q9Y2R2
B	-13	HIS	-	EXPRESSION TAG	UNP Q9Y2R2
B	-12	SER	-	EXPRESSION TAG	UNP Q9Y2R2
B	-11	SER	-	EXPRESSION TAG	UNP Q9Y2R2
B	-10	GLY	-	EXPRESSION TAG	UNP Q9Y2R2
B	-9	LEU	-	EXPRESSION TAG	UNP Q9Y2R2
B	-8	VAL	-	EXPRESSION TAG	UNP Q9Y2R2
B	-7	PRO	-	EXPRESSION TAG	UNP Q9Y2R2
B	-6	ARG	-	EXPRESSION TAG	UNP Q9Y2R2
B	-5	GLY	-	EXPRESSION TAG	UNP Q9Y2R2
B	-4	SER	-	EXPRESSION TAG	UNP Q9Y2R2
B	-3	HIS	-	EXPRESSION TAG	UNP Q9Y2R2
B	-2	MET	-	EXPRESSION TAG	UNP Q9Y2R2
B	-1	ALA	-	EXPRESSION TAG	UNP Q9Y2R2
B	0	SER	-	EXPRESSION TAG	UNP Q9Y2R2

- Molecule 2 is 3-[(3-CHLOROPHENYL)ETHYNYL]-2-{4-[2-(CYCLOPROPYLAMINO)-2-OXOETHOXY]PHENYL}-6-HYDROXY-1-BENZOFURAN-5-CARBOXYLIC ACID (three-letter code: N75) (formula: C₂₈H₂₀ClNO₆).



Mol	Chain	Residues	Atoms					ZeroOcc	AltConf
2	A	1	Total	C	Cl	N	O	0	0
			36	28	1	1	6		
2	B	1	Total	C	Cl	N	O	0	0
			36	28	1	1	6		

- Molecule 3 is water.

Mol	Chain	Residues	Atoms		ZeroOcc	AltConf
3	A	19	Total	O	0	0
			19	19		
3	B	29	Total	O	0	0
			29	29		

4 Data and refinement statistics

Property	Value	Source
Space group	P 21 21 21	Depositor
Cell constants a, b, c, α , β , γ	46.19 Å 93.64 Å 153.50 Å 90.00° 90.00° 90.00°	Depositor
Resolution (Å)	50.00 – 2.30 30.59 – 2.30	Depositor EDS
% Data completeness (in resolution range)	86.7 (50.00-2.30) 92.0 (30.59-2.30)	Depositor EDS
R_{merge}	0.07	Depositor
R_{sym}	(Not available)	Depositor
$\langle I/\sigma(I) \rangle$ ¹	1.19 (at 2.29 Å)	Xtriage
Refinement program	CNS 1.1	Depositor
R, R_{free}	0.189 , 0.238 0.203 , 0.243	Depositor DCC
R_{free} test set	1363 reflections (5.10%)	DCC
Wilson B-factor (Å ²)	59.1	Xtriage
Anisotropy	0.111	Xtriage
Bulk solvent k_{sol} (e/Å ³), B_{sol} (Å ²)	0.32 , 35.8	EDS
Estimated twinning fraction	No twinning to report.	Xtriage
L-test for twinning ²	$\langle L \rangle = 0.43$, $\langle L^2 \rangle = 0.26$	Xtriage
Outliers	2 of 28140 reflections (0.007%)	Xtriage
F_o, F_c correlation	0.97	EDS
Total number of atoms	5116	wwPDB-VP
Average B, all atoms (Å ²)	64.0	wwPDB-VP

Xtriage's analysis on translational NCS is as follows: *The analyses of the Patterson function reveals a significant off-origin peak that is 46.54 % of the origin peak, indicating pseudo translational symmetry. The chance of finding a peak of this or larger height randomly in a structure without pseudo translational symmetry is equal to 1.1283e-04. The detected translational NCS is most likely also responsible for the elevated intensity ratio.*

¹ Intensities estimated from amplitudes.

² Theoretical values of $\langle |L| \rangle$, $\langle L^2 \rangle$ for acentric reflections are 0.5, 0.375 respectively for untwinned datasets, and 0.333, 0.2 for perfectly twinned datasets.

5 Model quality

5.1 Standard geometry

Bond lengths and bond angles in the following residue types are not validated in this section: N75

The Z score for a bond length (or angle) is the number of standard deviations the observed value is removed from the expected value. A bond length (or angle) with $|Z| > 5$ is considered an outlier worth inspection. RMSZ is the root-mean-square of all Z scores of the bond lengths (or angles).

Mol	Chain	Bond lengths		Bond angles	
		RMSZ	# Z >5	RMSZ	# Z >5
1	A	0.47	0/2555	0.67	0/3446
1	B	0.45	0/2555	0.66	0/3446
All	All	0.46	0/5110	0.66	0/6892

There are no bond length outliers.

There are no bond angle outliers.

There are no chirality outliers.

There are no planarity outliers.

5.2 Too-close contacts

In the following table, the Non-H and H(model) columns list the number of non-hydrogen atoms and hydrogen atoms in the chain respectively. The H(added) column lists the number of hydrogen atoms added and optimized by MolProbity. The Clashes column lists the number of clashes within the asymmetric unit, whereas Symm-Clashes lists symmetry related clashes.

Mol	Chain	Non-H	H(model)	H(added)	Clashes	Symm-Clashes
1	A	2498	0	2485	60	0
1	B	2498	0	2485	67	0
2	A	36	0	19	1	0
2	B	36	0	19	1	0
3	A	19	0	0	0	0
3	B	29	0	0	1	0
All	All	5116	0	5008	127	0

The all-atom clashscore is defined as the number of clashes found per 1000 atoms (including hydrogen atoms). The all-atom clashscore for this structure is 13.

All (127) close contacts within the same asymmetric unit are listed below, sorted by their clash

magnitude.

Atom-1	Atom-2	Interatomic distance (Å)	Clash overlap (Å)
1:A:150:GLN:H	1:A:150:GLN:NE2	1.70	0.89
1:B:164:LYS:HE3	1:B:166:LYS:HG3	1.59	0.82
1:A:150:GLN:H	1:A:150:GLN:HE21	1.29	0.81
1:B:203:ASP:O	1:B:207:GLU:HG3	1.81	0.79
1:A:53:LYS:HE2	1:A:53:LYS:HA	1.68	0.75
1:B:164:LYS:NZ	1:B:166:LYS:HE3	2.03	0.73
1:B:164:LYS:CE	1:B:166:LYS:HE3	2.19	0.73
1:B:164:LYS:HE3	1:B:166:LYS:HE3	1.72	0.70
1:A:34:GLN:HE22	1:A:263:ARG:HD2	1.57	0.70
1:B:164:LYS:HE3	1:B:166:LYS:CG	2.23	0.68
1:A:15:GLN:HE21	1:A:16:SER:N	1.91	0.68
1:A:203:ASP:O	1:A:207:GLU:HG3	1.93	0.67
1:B:208:LEU:O	1:B:212:VAL:HG23	1.93	0.67
1:A:56:LYS:N	1:A:56:LYS:HE2	2.09	0.67
1:A:150:GLN:N	1:A:150:GLN:NE2	2.43	0.66
1:A:163:GLU:HG3	1:A:172:ARG:HG2	1.77	0.66
1:B:64:LEU:O	1:B:270:PRO:HG2	1.95	0.66
1:A:61:LYS:HD2	1:A:61:LYS:O	1.95	0.65
1:A:64:LEU:O	1:A:270:PRO:HG2	1.97	0.64
1:B:196:HIS:ND1	1:B:277:GLU:HG3	2.12	0.64
1:A:201:SER:O	1:A:204:PRO:HD2	1.98	0.63
1:B:34:GLN:HE22	1:B:263:ARG:HD2	1.61	0.63
1:A:275:THR:OG1	1:A:278:GLN:HG3	2.00	0.62
1:A:263:ARG:O	1:A:267:THR:HG23	1.99	0.62
1:B:56:LYS:HE3	1:B:56:LYS:HA	1.81	0.62
1:B:9:LYS:O	1:B:13:GLU:HG3	1.99	0.62
1:B:246:LEU:HB3	1:B:252:ILE:HD13	1.81	0.61
1:A:18:LYS:NZ	1:A:18:LYS:HB3	2.15	0.61
1:A:265:MET:HB3	1:A:272:LEU:HD23	1.82	0.61
1:B:62:ASP:OD1	1:B:62:ASP:N	2.34	0.61
1:B:247:LEU:HB3	1:B:293:GLN:HG2	1.82	0.60
1:B:236:VAL:O	1:B:240:ILE:HG13	2.01	0.59
1:A:225:ILE:HG22	1:A:234:THR:HG23	1.86	0.57
1:B:90:ILE:HB	1:B:99:TYR:HB2	1.89	0.55
1:A:202:ILE:O	1:A:205:ILE:HG22	2.06	0.55
1:A:264:GLU:OE2	1:A:264:GLU:N	2.39	0.55
1:B:260:SER:O	1:B:264:GLU:OE1	2.25	0.55
1:A:164:LYS:C	1:A:164:LYS:HD3	2.28	0.54
1:B:262:ILE:HD12	1:B:273:VAL:HG21	1.89	0.54
1:A:243:THR:HG21	1:A:286:VAL:HG13	1.91	0.53
1:A:294:MET:O	1:A:298:ARG:HG3	2.08	0.53

Continued on next page...

Continued from previous page...

Atom-1	Atom-2	Interatomic distance (Å)	Clash overlap (Å)
1:B:71:VAL:HG13	1:B:89:PHE:CZ	2.43	0.53
1:B:23:GLU:O	1:B:27:GLU:HG2	2.09	0.52
1:B:124:ILE:HD13	1:B:212:VAL:HG13	1.91	0.52
1:B:56:LYS:O	1:B:56:LYS:HG3	2.10	0.52
1:A:276:GLN:O	1:A:280:GLU:HG3	2.10	0.52
1:A:159:SER:OG	1:A:177:LYS:NZ	2.43	0.52
1:B:164:LYS:NZ	1:B:171:ILE:HD12	2.25	0.51
1:A:63:ILE:O	1:A:64:LEU:HD23	2.10	0.51
1:B:282:VAL:O	1:B:286:VAL:HG23	2.09	0.51
1:A:53:LYS:HE2	1:A:53:LYS:CA	2.40	0.51
1:B:61:LYS:HD2	1:B:61:LYS:O	2.10	0.51
1:B:164:LYS:HE3	1:B:166:LYS:CE	2.42	0.50
1:A:6:ILE:HD11	1:A:254:GLU:HG2	1.93	0.50
1:B:66:TYR:CE1	1:B:270:PRO:HG3	2.46	0.50
1:A:232:GLY:O	1:A:236:VAL:HG23	2.13	0.49
1:A:89:PHE:HZ	1:A:120:TYR:CE1	2.31	0.49
1:A:66:TYR:CE1	1:A:270:PRO:HG3	2.48	0.48
1:A:235:GLY:HA3	1:A:272:LEU:O	2.14	0.48
1:B:89:PHE:HZ	1:B:120:TYR:CE1	2.31	0.48
1:B:39:LYS:HB3	1:B:39:LYS:NZ	2.29	0.48
1:A:15:GLN:NE2	1:A:16:SER:N	2.59	0.48
1:A:18:LYS:HB3	1:A:18:LYS:HZ3	1.75	0.48
1:B:19:ILE:HD11	3:B:501:HOH:O	2.14	0.47
1:A:53:LYS:HG3	1:A:81:ASP:OD2	2.14	0.47
1:B:163:GLU:HG2	1:B:172:ARG:HG2	1.97	0.47
1:A:203:ASP:N	1:A:204:PRO:CD	2.78	0.47
1:A:34:GLN:HE22	1:A:263:ARG:CD	2.24	0.47
1:A:24:PHE:CD1	1:A:280:GLU:HG2	2.50	0.47
1:B:144:ALA:O	1:B:160:CYS:HB2	2.14	0.47
1:B:263:ARG:O	1:B:267:THR:HG23	2.15	0.47
1:B:164:LYS:HZ1	1:B:166:LYS:HE3	1.78	0.46
1:A:211:ASP:O	1:A:214:CYS:HB2	2.16	0.46
1:B:271:SER:O	1:B:272:LEU:C	2.53	0.46
1:A:150:GLN:N	1:A:150:GLN:HE21	2.03	0.46
1:A:274:GLN:HG2	2:A:401:N75:H18	1.97	0.46
1:B:179:ASN:O	1:B:180:SER:HB2	2.16	0.46
1:B:201:SER:O	1:B:204:PRO:HD2	2.16	0.45
1:A:144:ALA:O	1:A:160:CYS:HB2	2.17	0.45
1:A:34:GLN:NE2	1:A:263:ARG:HD2	2.28	0.45
1:B:211:ASP:O	1:B:214:CYS:HB2	2.16	0.45
1:B:111:LEU:O	1:B:115:ARG:HG3	2.16	0.45

Continued on next page...

Continued from previous page...

Atom-1	Atom-2	Interatomic distance (Å)	Clash overlap (Å)
1:B:2:ASP:OD1	1:B:5:GLU:HG3	2.15	0.45
1:A:15:GLN:C	1:A:15:GLN:NE2	2.70	0.45
1:A:213:ARG:HA	1:A:213:ARG:HD3	1.75	0.45
1:A:15:GLN:C	1:A:15:GLN:HE21	2.20	0.45
1:B:18:LYS:NZ	1:B:18:LYS:HB3	2.32	0.45
1:A:202:ILE:HG22	1:A:281:LEU:CD1	2.47	0.44
1:B:265:MET:HB3	1:B:272:LEU:HD23	1.98	0.44
1:B:274:GLN:HG2	2:B:401:N75:H18	1.98	0.44
1:B:63:ILE:C	1:B:64:LEU:HD23	2.37	0.44
1:B:59:ARG:NH2	1:B:106:LEU:HD23	2.32	0.44
1:A:132:TYR:HA	1:A:136:LYS:O	2.17	0.44
1:B:203:ASP:HB2	1:B:204:PRO:HD3	2.00	0.44
1:A:177:LYS:N	1:A:177:LYS:HD2	2.32	0.43
1:B:34:GLN:NE2	1:B:263:ARG:HD2	2.30	0.43
1:A:231:CYS:HB2	1:A:271:SER:O	2.18	0.43
1:A:292:ARG:O	1:A:296:VAL:HG23	2.17	0.43
1:A:6:ILE:CD1	1:A:254:GLU:HG2	2.48	0.43
1:B:213:ARG:HA	1:B:213:ARG:HD3	1.69	0.43
1:A:28:PHE:CD1	1:A:31:LEU:HD12	2.54	0.43
1:B:288:GLU:O	1:B:292:ARG:HG3	2.19	0.43
1:A:80:GLU:HG3	1:A:80:GLU:O	2.17	0.43
1:B:195:ASP:OD2	1:B:198:VAL:HG23	2.18	0.43
1:A:114:TRP:CZ3	1:A:176:VAL:HG21	2.54	0.42
1:A:117:ILE:HG23	1:A:122:VAL:HB	2.01	0.42
1:B:164:LYS:HE3	1:B:166:LYS:CD	2.48	0.42
1:A:21:LYS:HE3	1:A:280:GLU:OE1	2.20	0.42
1:A:123:LEU:O	1:A:123:LEU:HG	2.19	0.42
1:A:102:THR:O	1:A:230:GLY:HA3	2.20	0.42
1:B:63:ILE:O	1:B:64:LEU:HD23	2.20	0.42
1:B:15:GLN:NE2	1:B:16:SER:N	2.68	0.42
1:B:202:ILE:O	1:B:205:ILE:HG22	2.20	0.42
1:A:102:THR:O	1:A:230:GLY:CA	2.68	0.41
1:B:84:TYR:CG	1:B:85:ILE:N	2.88	0.41
1:B:244:TRP:CE2	1:B:248:LYS:HD3	2.56	0.41
1:B:21:LYS:HZ3	1:B:21:LYS:HB2	1.85	0.41
1:B:246:LEU:CB	1:B:252:ILE:HD13	2.49	0.41
1:B:50:GLU:O	1:B:55:ILE:HD11	2.21	0.41
1:B:108:THR:HG23	1:B:109:THR:HG23	2.03	0.41
1:B:177:LYS:HG3	1:B:182:THR:OG1	2.20	0.41
1:B:243:THR:O	1:B:246:LEU:HB2	2.21	0.40
1:B:87:ALA:HB2	1:B:102:THR:OG1	2.21	0.40

Continued on next page...

Continued from previous page...

Atom-1	Atom-2	Interatomic distance (Å)	Clash overlap (Å)
1:B:164:LYS:CE	1:B:171:ILE:HD12	2.51	0.40
1:B:203:ASP:N	1:B:204:PRO:CD	2.85	0.40
1:B:36:THR:HA	1:B:39:LYS:NZ	2.36	0.40
1:A:198:VAL:HB	1:A:201:SER:HB3	2.04	0.40

There are no symmetry-related clashes.

5.3 Torsion angles [i](#)

5.3.1 Protein backbone [i](#)

In the following table, the Percentiles column shows the percent Ramachandran outliers of the chain as a percentile score with respect to all X-ray entries followed by that with respect to entries of similar resolution.

The Analysed column shows the number of residues for which the backbone conformation was analysed, and the total number of residues.

Mol	Chain	Analysed	Favoured	Allowed	Outliers	Percentiles	
1	A	298/326 (91%)	282 (95%)	16 (5%)	0	100	100
1	B	298/326 (91%)	283 (95%)	15 (5%)	0	100	100
All	All	596/652 (91%)	565 (95%)	31 (5%)	0	100	100

There are no Ramachandran outliers to report.

5.3.2 Protein sidechains [i](#)

In the following table, the Percentiles column shows the percent sidechain outliers of the chain as a percentile score with respect to all X-ray entries followed by that with respect to entries of similar resolution.

The Analysed column shows the number of residues for which the sidechain conformation was analysed, and the total number of residues.

Mol	Chain	Analysed	Rotameric	Outliers	Percentiles	
1	A	278/298 (93%)	266 (96%)	12 (4%)	35	47
1	B	278/298 (93%)	268 (96%)	10 (4%)	42	57
All	All	556/596 (93%)	534 (96%)	22 (4%)	38	52

All (22) residues with a non-rotameric sidechain are listed below:

Mol	Chain	Res	Type
1	A	15	GLN
1	A	21	LYS
1	A	53	LYS
1	A	56	LYS
1	A	61	LYS
1	A	68	TYR
1	A	79	ASP
1	A	108	THR
1	A	149	MET
1	A	150	GLN
1	A	264	GLU
1	A	265	MET
1	B	15	GLN
1	B	21	LYS
1	B	56	LYS
1	B	61	LYS
1	B	62	ASP
1	B	68	TYR
1	B	149	MET
1	B	177	LYS
1	B	265	MET
1	B	272	LEU

Some sidechains can be flipped to improve hydrogen bonding and reduce clashes. All (5) such sidechains are listed below:

Mol	Chain	Res	Type
1	A	15	GLN
1	A	34	GLN
1	A	150	GLN
1	A	301	HIS
1	B	15	GLN

5.3.3 RNA [i](#)

There are no RNA molecules in this entry.

5.4 Non-standard residues in protein, DNA, RNA chains [i](#)

There are no non-standard protein/DNA/RNA residues in this entry.

5.5 Carbohydrates

There are no carbohydrates in this entry.

5.6 Ligand geometry

2 ligands are modelled in this entry.

In the following table, the Counts columns list the number of bonds (or angles) for which Mogul statistics could be retrieved, the number of bonds (or angles) that are observed in the model and the number of bonds (or angles) that are defined in the chemical component dictionary. The Link column lists molecule types, if any, to which the group is linked. The Z score for a bond length (or angle) is the number of standard deviations the observed value is removed from the expected value. A bond length (or angle) with $|Z| > 2$ is considered an outlier worth inspection. RMSZ is the root-mean-square of all Z scores of the bond lengths (or angles).

Mol	Type	Chain	Res	Link	Bond lengths			Bond angles		
					Counts	RMSZ	$\# Z > 2$	Counts	RMSZ	$\# Z > 2$
2	N75	A	401	-	33,40,40	1.99	5 (15%)	39,57,57	1.86	3 (7%)
2	N75	B	401	-	33,40,40	2.04	4 (12%)	39,57,57	1.85	4 (10%)

In the following table, the Chirals column lists the number of chiral outliers, the number of chiral centers analysed, the number of these observed in the model and the number defined in the chemical component dictionary. Similar counts are reported in the Torsion and Rings columns. '-' means no outliers of that kind were identified.

Mol	Type	Chain	Res	Link	Chirals	Torsions	Rings
2	N75	A	401	-	-	0/14/24/24	0/3/5/5
2	N75	B	401	-	-	0/14/24/24	0/3/5/5

All (9) bond length outliers are listed below:

Mol	Chain	Res	Type	Atoms	Z	Observed(Å)	Ideal(Å)
2	B	401	N75	C7-C20	-6.94	1.33	1.43
2	A	401	N75	C7-C20	-6.38	1.34	1.43
2	A	401	N75	C9-C8	-6.29	1.38	1.46
2	B	401	N75	C9-C8	-6.01	1.38	1.46
2	B	401	N75	C22-C21	-5.08	1.31	1.44
2	A	401	N75	C22-C21	-4.69	1.32	1.44
2	B	401	N75	C16-N1	2.37	1.38	1.34
2	A	401	N75	C1-C2	2.41	1.39	1.37
2	A	401	N75	C16-N1	2.47	1.39	1.34

All (7) bond angle outliers are listed below:

Mol	Chain	Res	Type	Atoms	Z	Observed($^{\circ}$)	Ideal($^{\circ}$)
2	A	401	N75	C18-C17-N1	-8.28	105.91	118.71
2	B	401	N75	C18-C17-N1	-8.13	106.13	118.71
2	B	401	N75	C11-C12-C13	-2.83	115.60	120.20
2	A	401	N75	C11-C12-C13	-2.82	115.62	120.20
2	B	401	N75	C10-C11-C12	2.03	122.31	119.74
2	B	401	N75	C19-C17-N1	4.62	125.85	118.71
2	A	401	N75	C19-C17-N1	4.73	126.02	118.71

There are no chirality outliers.

There are no torsion outliers.

There are no ring outliers.

2 monomers are involved in 2 short contacts:

Mol	Chain	Res	Type	Clashes	Symm-Clashes
2	A	401	N75	1	0
2	B	401	N75	1	0

5.7 Other polymers [i](#)

There are no such residues in this entry.

5.8 Polymer linkage issues [i](#)

There are no chain breaks in this entry.

6 Fit of model and data

6.1 Protein, DNA and RNA chains

In the following table, the column labelled ‘#RSRZ> 2’ contains the number (and percentage) of RSRZ outliers, followed by percent RSRZ outliers for the chain as percentile scores relative to all X-ray entries and entries of similar resolution. The OWAB column contains the minimum, median, 95th percentile and maximum values of the occupancy-weighted average B-factor per residue. The column labelled ‘Q< 0.9’ lists the number of (and percentage) of residues with an average occupancy less than 0.9.

Mol	Chain	Analysed	<RSRZ>	#RSRZ>2	OWAB(Å ²)	Q<0.9
1	A	302/326 (92%)	0.19	18 (5%) 25 33	53, 63, 72, 77	0
1	B	302/326 (92%)	0.28	22 (7%) 18 25	55, 64, 72, 79	0
All	All	604/652 (92%)	0.23	40 (6%) 22 29	53, 64, 73, 79	0

All (40) RSRZ outliers are listed below:

Mol	Chain	Res	Type	RSRZ
1	A	238	CYS	5.2
1	B	238	CYS	4.7
1	B	225	ILE	4.0
1	A	225	ILE	3.9
1	B	100	ILE	3.9
1	B	235	GLY	3.8
1	A	101	ALA	3.7
1	B	234	THR	3.7
1	B	239	ALA	3.6
1	B	300	LYS	3.6
1	B	90	ILE	3.4
1	A	126	VAL	3.3
1	B	101	ALA	3.3
1	A	239	ALA	3.3
1	B	126	VAL	3.2
1	B	226	HIS	3.2
1	A	234	THR	3.1
1	A	235	GLY	3.1
1	B	99	TYR	3.0
1	B	224	CYS	3.0
1	A	236	VAL	2.8
1	A	99	TYR	2.8
1	B	236	VAL	2.8
1	A	224	CYS	2.7

Continued on next page...

Continued from previous page...

Mol	Chain	Res	Type	RSRZ
1	A	237	ILE	2.7
1	B	240	ILE	2.7
1	B	1	MET	2.6
1	A	100	ILE	2.6
1	B	237	ILE	2.6
1	A	227	CYS	2.6
1	A	223	ILE	2.4
1	B	6	ILE	2.3
1	A	240	ILE	2.2
1	A	40	ALA	2.2
1	A	300	LYS	2.2
1	A	226	HIS	2.2
1	B	41	ASP	2.1
1	B	227	CYS	2.1
1	B	102	THR	2.0
1	B	127	MET	2.0

6.2 Non-standard residues in protein, DNA, RNA chains [i](#)

There are no non-standard protein/DNA/RNA residues in this entry.

6.3 Carbohydrates [i](#)

There are no carbohydrates in this entry.

6.4 Ligands [i](#)

In the following table, the Atoms column lists the number of modelled atoms in the group and the number defined in the chemical component dictionary. LLDF column lists the quality of electron density of the group with respect to its neighbouring residues in protein, DNA or RNA chains. The B-factors column lists the minimum, median, 95th percentile and maximum values of B factors of atoms in the group. The column labelled 'Q< 0.9' lists the number of atoms with occupancy less than 0.9.

Mol	Type	Chain	Res	Atoms	RSCC	RSR	LLDF	B-factors(\AA^2)	Q<0.9
2	N75	A	401	36/36	0.75	0.24	1.33	68,76,77,79	0
2	N75	B	401	36/36	0.74	0.23	0.91	68,74,77,78	0

6.5 Other polymers

There are no such residues in this entry.