



Full wwPDB X-ray Structure Validation Report ⓘ

Jul 3, 2016 – 06:25 AM EDT

PDB ID : 5J5J
Title : Crystal structure of a chimera of human Desmocollin-2 EC1 and human Desmoglein-2 EC2-EC5
Authors : Brasch, J.; Harrison, O.J.; Shapiro, L.
Deposited on : 2016-04-02
Resolution : 3.29 Å(reported)

This is a Full wwPDB X-ray Structure Validation Report for a publicly released PDB entry.
We welcome your comments at validation@mail.wwpdb.org
A user guide is available at
<http://wwpdb.org/validation/2016/XrayValidationReportHelp>
with specific help available everywhere you see the ⓘ symbol.

The following versions of software and data (see [references ⓘ](#)) were used in the production of this report:

MolProbity : 4.02b-467
Mogul : 1.7.1 (RC1), CSD as537be (2016)
Xtriage (Phenix) : 1.9-1692
EDS : rb-20027790
Percentile statistics : 20151230.v01 (using entries in the PDB archive December 30th 2015)
Refmac : 5.8.0135
CCP4 : 6.5.0
Ideal geometry (proteins) : Engh & Huber (2001)
Ideal geometry (DNA, RNA) : Parkinson et al. (1996)
Validation Pipeline (wwPDB-VP) : rb-20027790

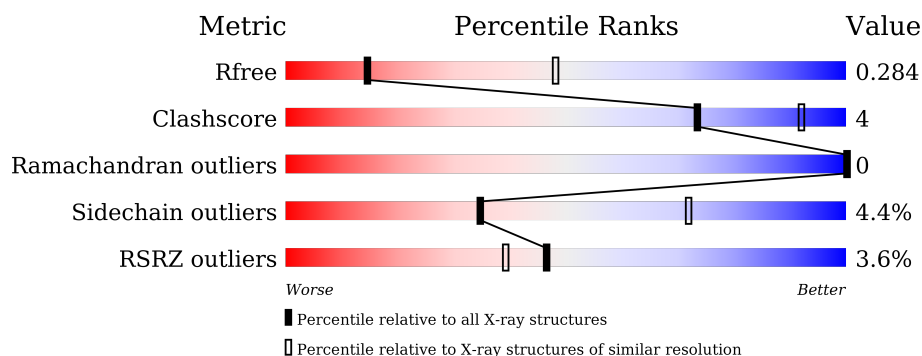
1 Overall quality at a glance

The following experimental techniques were used to determine the structure:

X-RAY DIFFRACTION

The reported resolution of this entry is 3.29 Å.

Percentile scores (ranging between 0-100) for global validation metrics of the entry are shown in the following graphic. The table shows the number of entries on which the scores are based.



Metric	Whole archive (#Entries)	Similar resolution (#Entries, resolution range(Å))
R_{free}	91344	2060 (3.40-3.20)
Clashscore	102246	1058 (3.38-3.22)
Ramachandran outliers	100387	1038 (3.38-3.22)
Sidechain outliers	100360	1037 (3.38-3.22)
RSRZ outliers	91569	2070 (3.40-3.20)

The table below summarises the geometric issues observed across the polymeric chains and their fit to the electron density. The red, orange, yellow and green segments on the lower bar indicate the fraction of residues that contain outliers for ≥ 3 , 2, 1 and 0 types of geometric quality criteria. A grey segment represents the fraction of residues that are not modelled. The numeric value for each fraction is indicated below the corresponding segment, with a dot representing fractions $\leq 5\%$. The upper red bar (where present) indicates the fraction of residues that have poor fit to the electron density. The numeric value is given above the bar.

Mol	Chain	Length	Quality of chain
1	A	557	<div> <div>4%</div> <div>85%</div> <div>13%</div> <div>..</div> </div>

The following table lists non-polymeric compounds, carbohydrate monomers and non-standard residues in protein, DNA, RNA chains that are outliers for geometric or electron-density-fit criteria:

Mol	Type	Chain	Res	Chirality	Geometry	Clashes	Electron density
7	CA	A	622	-	-	-	X
7	CA	A	623	-	-	-	X

Continued on next page...

Continued from previous page...

Mol	Type	Chain	Res	Chirality	Geometry	Clashes	Electron density
7	CA	A	624	-	-	-	X
7	CA	A	626	-	-	-	X
7	CA	A	629	-	-	-	X
7	CA	A	630	-	-	-	X
7	CA	A	631	-	-	-	X

2 Entry composition [i](#)

There are 9 unique types of molecules in this entry. The entry contains 9151 atoms, of which 4507 are hydrogens and 0 are deuteriums.

In the tables below, the ZeroOcc column contains the number of atoms modelled with zero occupancy, the AltConf column contains the number of residues with at least one atom in alternate conformation and the Trace column contains the number of residues modelled with at most 2 atoms.

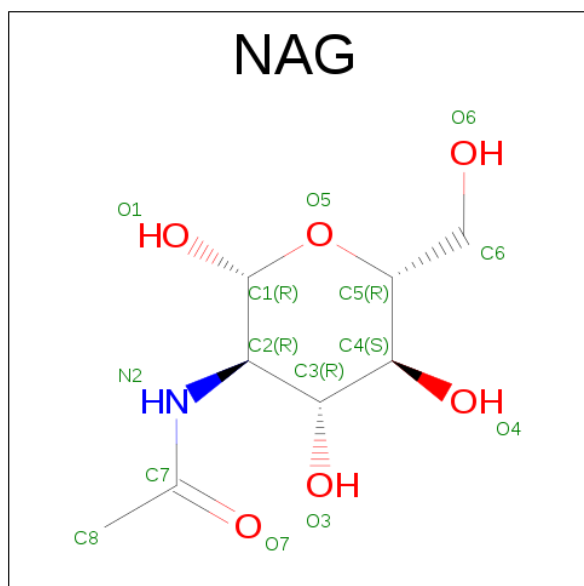
- Molecule 1 is a protein called Desmocollin-2,Desmoglein-2.

Mol	Chain	Residues	Atoms						ZeroOcc	AltConf	Trace
			Total	C	H	N	O	S			
1	A	552	8608	2753	4246	721	874	14	0	0	0

There are 7 discrepancies between the modelled and reference sequences:

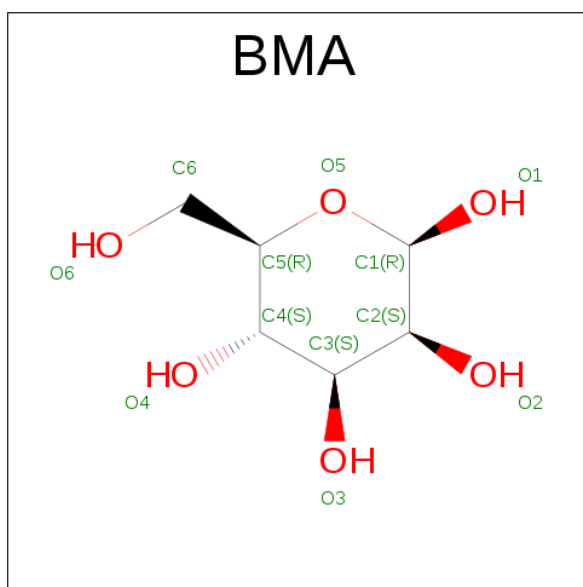
Chain	Residue	Modelled	Actual	Comment	Reference
A	551	ALA	-	expression tag	UNP Q14126
A	552	HIS	-	expression tag	UNP Q14126
A	553	HIS	-	expression tag	UNP Q14126
A	554	HIS	-	expression tag	UNP Q14126
A	555	HIS	-	expression tag	UNP Q14126
A	556	HIS	-	expression tag	UNP Q14126
A	557	HIS	-	expression tag	UNP Q14126

- Molecule 2 is N-ACETYL-D-GLUCOSAMINE (three-letter code: NAG) (formula: $C_8H_{15}NO_6$).



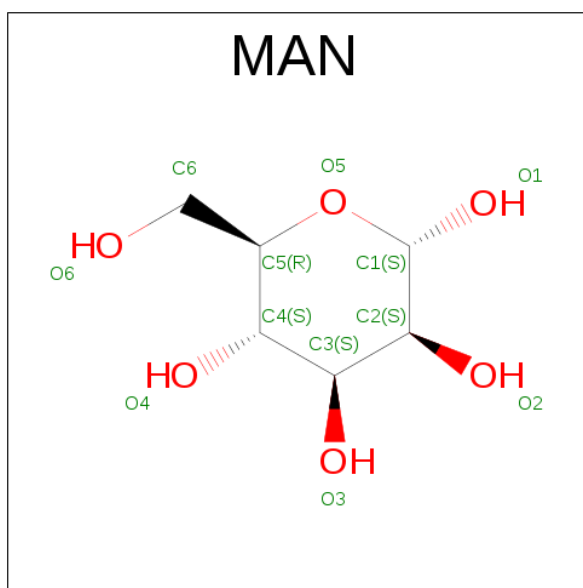
Mol	Chain	Residues	Atoms					ZeroOcc	AltConf
2	A	1	Total	C	H	N	O	0	0
			28	8	14	1	5		
2	A	1	Total	C	H	N	O	0	0
			28	8	14	1	5		
2	A	1	Total	C	H	N	O	0	0
			28	8	14	1	5		
2	A	1	Total	C	H	N	O	0	0
			28	8	14	1	5		
2	A	1	Total	C	H	N	O	0	0
			28	8	14	1	5		
2	A	1	Total	C	H	N	O	0	0
			28	8	14	1	5		
2	A	1	Total	C	H	N	O	0	0
			28	8	14	1	5		
2	A	1	Total	C	H	N	O	0	0
			28	8	14	1	5		

- Molecule 3 is BETA-D-MANNOSE (three-letter code: BMA) (formula: $C_6H_{12}O_6$).



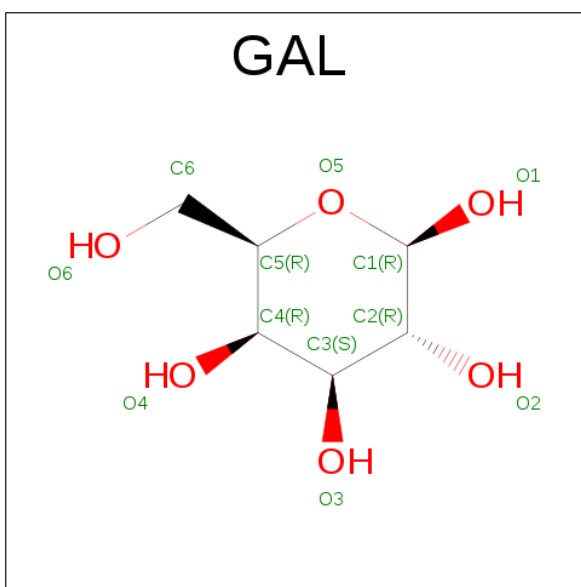
Mol	Chain	Residues	Atoms				ZeroOcc	AltConf
3	A	1	Total	C	H	O	0	0
			22	6	11	5		
3	A	1	Total	C	H	O	0	0
			22	6	11	5		

- Molecule 4 is ALPHA-D-MANNOSE (three-letter code: MAN) (formula: $C_6H_{12}O_6$).



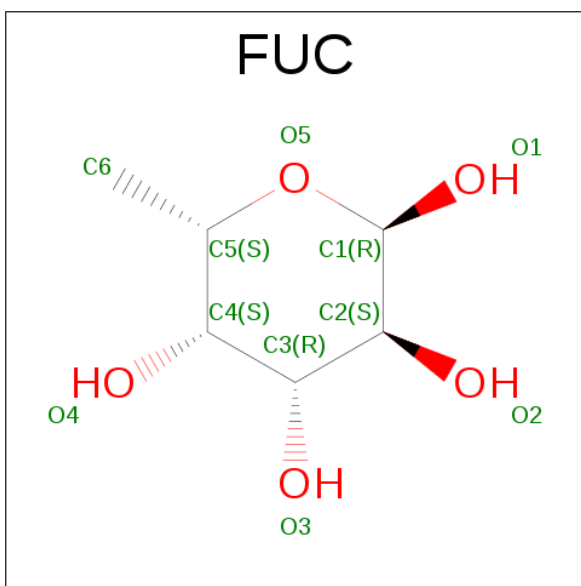
Mol	Chain	Residues	Atoms				ZeroOcc	AltConf
4	A	1	Total	C	H	O	0	0
			22	6	11	5		
4	A	1	Total	C	H	O	0	0
			22	6	11	5		
4	A	1	Total	C	H	O	0	0
			22	6	11	5		
4	A	1	Total	C	H	O	0	0
			22	6	11	5		
4	A	1	Total	C	H	O	0	0
			22	6	11	5		
4	A	1	Total	C	H	O	0	0
			22	6	11	5		

- Molecule 5 is BETA-D-GALACTOSE (three-letter code: GAL) (formula: $C_6H_{12}O_6$).



Mol	Chain	Residues	Atoms				ZeroOcc	AltConf
5	A	1	Total	C	H	O	0	0
			22	6	11	5		

- Molecule 6 is ALPHA-L-FUCOSE (three-letter code: FUC) (formula: $C_6H_{12}O_5$).



Mol	Chain	Residues	Atoms				ZeroOcc	AltConf
6	A	1	Total	C	H	O	0	0
			21	6	11	4		

- Molecule 7 is CALCIUM ION (three-letter code: CA) (formula: Ca).

Mol	Chain	Residues	Atoms		ZeroOcc	AltConf
7	A	11	Total	Ca	0	0
			11	11		

- Molecule 8 is CHLORIDE ION (three-letter code: CL) (formula: Cl).

Mol	Chain	Residues	Atoms		ZeroOcc	AltConf
8	A	2	Total	Cl	0	0
			2	2		

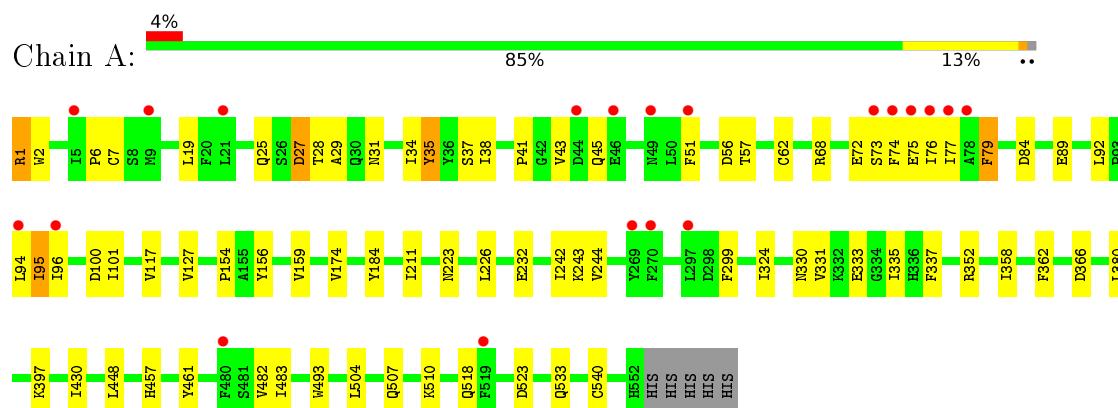
- Molecule 9 is water.

Mol	Chain	Residues	Atoms		ZeroOcc	AltConf
9	A	9	Total	O	0	0
			9	9		

3 Residue-property plots [i](#)

These plots are drawn for all protein, RNA and DNA chains in the entry. The first graphic for a chain summarises the proportions of errors displayed in the second graphic. The second graphic shows the sequence view annotated by issues in geometry and electron density. Residues are color-coded according to the number of geometric quality criteria for which they contain at least one outlier: green = 0, yellow = 1, orange = 2 and red = 3 or more. A red dot above a residue indicates a poor fit to the electron density ($RSRZ > 2$). Stretches of 2 or more consecutive residues without any outlier are shown as a green connector. Residues present in the sample, but not in the model, are shown in grey.

- Molecule 1: Desmocollin-2,Desmoglein-2



4 Data and refinement statistics

Property	Value	Source
Space group	P 2 21 21	Depositor
Cell constants a, b, c, α , β , γ	63.49Å 87.49Å 218.54Å 90.00° 90.00° 90.00°	Depositor
Resolution (Å)	68.30 – 3.29 68.29 – 3.29	Depositor EDS
% Data completeness (in resolution range)	98.9 (68.30-3.29) 88.5 (68.29-3.29)	Depositor EDS
R_{merge}	(Not available)	Depositor
R_{sym}	(Not available)	Depositor
$\langle I/\sigma(I) \rangle$ ¹	1.15 (at 3.26Å)	Xtriage
Refinement program	PHENIX (phenix.refine: dev_1810)	Depositor
R, R_{free}	0.247 , 0.285 0.240 , 0.284	Depositor DCC
R_{free} test set	868 reflections (5.10%)	DCC
Wilson B-factor (Å ²)	114.6	Xtriage
Anisotropy	0.300	Xtriage
Bulk solvent k_{sol} (e/Å ³), B_{sol} (Å ²)	0.34 , 89.6	EDS
L-test for twinning ²	$\langle L \rangle = 0.46$, $\langle L^2 \rangle = 0.28$	Xtriage
Estimated twinning fraction	No twinning to report.	Xtriage
F_o, F_c correlation	0.94	EDS
Total number of atoms	9151	wwPDB-VP
Average B, all atoms (Å ²)	169.0	wwPDB-VP

Xtriage's analysis on translational NCS is as follows: *The largest off-origin peak in the Patterson function is 3.21% of the height of the origin peak. No significant pseudotranslation is detected.*

¹Intensities estimated from amplitudes.

²Theoretical values of $\langle |L| \rangle$, $\langle L^2 \rangle$ for acentric reflections are 0.5, 0.333 respectively for untwinned datasets, and 0.375, 0.2 for perfectly twinned datasets.

5 Model quality

5.1 Standard geometry

Bond lengths and bond angles in the following residue types are not validated in this section: BMA, NAG, CL, CA, GAL, FUC, MAN

The Z score for a bond length (or angle) is the number of standard deviations the observed value is removed from the expected value. A bond length (or angle) with $|Z| > 5$ is considered an outlier worth inspection. RMSZ is the root-mean-square of all Z scores of the bond lengths (or angles).

Mol	Chain	Bond lengths		Bond angles	
		RMSZ	$\# Z > 5$	RMSZ	$\# Z > 5$
1	A	0.26	0/4453	0.46	0/6059

There are no bond length outliers.

There are no bond angle outliers.

There are no chirality outliers.

There are no planarity outliers.

5.2 Too-close contacts

In the following table, the Non-H and H(model) columns list the number of non-hydrogen atoms and hydrogen atoms in the chain respectively. The H(added) column lists the number of hydrogen atoms added and optimized by MolProbity. The Clashes column lists the number of clashes within the asymmetric unit, whereas Symm-Clashes lists symmetry related clashes.

Mol	Chain	Non-H	H(model)	H(added)	Clashes	Symm-Clashes
1	A	4362	4246	4244	36	2
2	A	140	140	123	2	0
3	A	22	22	16	1	0
4	A	77	77	68	1	0
5	A	11	11	10	0	0
6	A	10	11	10	0	0
7	A	11	0	0	0	0
8	A	2	0	0	0	0
9	A	9	0	0	0	0
All	All	4644	4507	4471	37	2

The all-atom clashscore is defined as the number of clashes found per 1000 atoms (including hydrogen atoms). The all-atom clashscore for this structure is 4.

All (37) close contacts within the same asymmetric unit are listed below, sorted by their clash magnitude.

Atom-1	Atom-2	Interatomic distance (Å)	Clash overlap (Å)
1:A:100:ASP:OD1	1:A:101:ILE:N	2.23	0.71
1:A:31:ASN:OD1	2:A:601:NAG:N2	2.27	0.68
3:A:615:BMA:O2	4:A:617:MAN:O5	2.15	0.63
1:A:74:PHE:HB2	1:A:96:ILE:HG23	1.80	0.62
1:A:226:LEU:HB3	1:A:324:ILE:HG22	1.86	0.56
1:A:25:GLN:NE2	1:A:57:THR:O	2.40	0.53
1:A:117:VAL:HG11	1:A:127:VAL:HG22	1.90	0.52
1:A:299:PHE:CZ	1:A:324:ILE:HD11	2.45	0.51
1:A:56:ASP:OD1	1:A:56:ASP:N	2.45	0.49
1:A:6:PRO:HB3	1:A:95:ILE:HG12	1.97	0.47
1:A:461:TYR:HB2	1:A:504:LEU:HD11	1.97	0.47
1:A:76:ILE:HG22	1:A:77:ILE:N	2.30	0.46
1:A:184:TYR:CE1	1:A:211:ILE:HD11	2.51	0.46
1:A:358:ILE:HD13	1:A:397:LYS:HB3	1.97	0.46
1:A:330:ASN:OD1	1:A:331:VAL:N	2.50	0.45
1:A:335:ILE:HA	1:A:366:ASP:HA	1.98	0.45
1:A:226:LEU:HD21	1:A:242:ILE:HG22	1.99	0.45
1:A:19:LEU:O	1:A:62:CYS:N	2.49	0.45
1:A:154:PRO:HD2	1:A:184:TYR:CE2	2.52	0.44
1:A:483:ILE:HD11	1:A:518:GLN:CD	2.38	0.44
1:A:448:LEU:HD11	1:A:533:GLN:HB3	2.00	0.44
1:A:79:PHE:CD1	1:A:79:PHE:N	2.86	0.43
1:A:1:ARG:HG3	1:A:2:TRP:N	2.33	0.43
1:A:223:ASN:OD1	1:A:243:LYS:N	2.50	0.43
1:A:299:PHE:CE2	1:A:324:ILE:HD11	2.54	0.42
1:A:41:PRO:HA	1:A:45:GLN:HG3	2.00	0.42
1:A:29:ALA:HA	1:A:34:ILE:CD1	2.49	0.42
1:A:232:GLU:OE2	1:A:333:GLU:OE2	2.37	0.42
1:A:335:ILE:HD12	1:A:430:ILE:HG12	2.02	0.41
1:A:28:THR:HA	2:A:601:NAG:H82	2.03	0.41
1:A:34:ILE:HG22	1:A:35:TYR:O	2.21	0.41
1:A:457:HIS:O	1:A:510:LYS:NZ	2.48	0.41
1:A:337:PHE:CZ	1:A:430:ILE:CD1	3.04	0.41
1:A:493:TRP:CZ3	1:A:507:GLN:HB3	2.56	0.41
1:A:335:ILE:CD1	1:A:430:ILE:HG12	2.51	0.40
1:A:159:VAL:HG12	1:A:174:VAL:CG2	2.51	0.40
1:A:38:ILE:HG23	1:A:43:VAL:HG11	2.04	0.40

All (2) symmetry-related close contacts are listed below. The label for Atom-2 includes the symmetry operator and encoded unit-cell translations to be applied.

Atom-1	Atom-2	Interatomic distance (Å)	Clash overlap (Å)
1:A:1:ARG:N	1:A:27:ASP:OD1[2_545]	2.08	0.12
1:A:156:TYR:OH	1:A:482:VAL:O[4_444]	2.15	0.05

5.3 Torsion angles [i](#)

5.3.1 Protein backbone [i](#)

In the following table, the Percentiles column shows the percent Ramachandran outliers of the chain as a percentile score with respect to all X-ray entries followed by that with respect to entries of similar resolution.

The Analysed column shows the number of residues for which the backbone conformation was analysed, and the total number of residues.

Mol	Chain	Analysed	Favoured	Allowed	Outliers	Percentiles	
1	A	550/557 (99%)	494 (90%)	56 (10%)	0	100	100

There are no Ramachandran outliers to report.

5.3.2 Protein sidechains [i](#)

In the following table, the Percentiles column shows the percent sidechain outliers of the chain as a percentile score with respect to all X-ray entries followed by that with respect to entries of similar resolution.

The Analysed column shows the number of residues for which the sidechain conformation was analysed, and the total number of residues.

Mol	Chain	Analysed	Rotameric	Outliers	Percentiles	
1	A	496/501 (99%)	474 (96%)	22 (4%)	35	72

All (22) residues with a non-rotameric sidechain are listed below:

Mol	Chain	Res	Type
1	A	1	ARG
1	A	7	CYS
1	A	27	ASP
1	A	35	TYR
1	A	37	SER
1	A	51	PHE
1	A	68	ARG

Continued on next page...

Continued from previous page...

Mol	Chain	Res	Type
1	A	72	GLU
1	A	73	SER
1	A	75	GLU
1	A	79	PHE
1	A	84	ASP
1	A	89	GLU
1	A	92	LEU
1	A	94	LEU
1	A	95	ILE
1	A	244	VAL
1	A	352	ARG
1	A	362	PHE
1	A	380	LEU
1	A	523	ASP
1	A	540	CYS

Some sidechains can be flipped to improve hydrogen bonding and reduce clashes. There are no such sidechains identified.

5.3.3 RNA [i](#)

There are no RNA molecules in this entry.

5.4 Non-standard residues in protein, DNA, RNA chains [i](#)

There are no non-standard protein/DNA/RNA residues in this entry.

5.5 Carbohydrates [i](#)

There are no carbohydrates in this entry.

5.6 Ligand geometry [i](#)

Of 34 ligands modelled in this entry, 13 are monoatomic - leaving 21 for Mogul analysis.

In the following table, the Counts columns list the number of bonds (or angles) for which Mogul statistics could be retrieved, the number of bonds (or angles) that are observed in the model and the number of bonds (or angles) that are defined in the chemical component dictionary. The Link column lists molecule types, if any, to which the group is linked. The Z score for a bond length (or angle) is the number of standard deviations the observed value is removed from the expected

value. A bond length (or angle) with $|Z| > 2$ is considered an outlier worth inspection. RMSZ is the root-mean-square of all Z scores of the bond lengths (or angles).

Mol	Type	Chain	Res	Link	Bond lengths			Bond angles		
					Counts	RMSZ	$\# Z > 2$	Counts	RMSZ	$\# Z > 2$
2	NAG	A	601	1,2	14,14,15	0.56	0	15,19,21	0.69	0
2	NAG	A	602	3,2	14,14,15	0.19	0	15,19,21	0.49	0
3	BMA	A	603	2,4	11,11,12	1.22	0	15,15,17	0.97	0
4	MAN	A	604	3,2	11,11,12	1.04	0	15,15,17	1.37	2 (13%)
4	MAN	A	605	3,2	11,11,12	1.15	1 (9%)	15,15,17	1.99	5 (33%)
2	NAG	A	606	5,4	14,14,15	0.35	0	15,19,21	0.64	0
2	NAG	A	607	4	14,14,15	0.42	0	15,19,21	0.20	0
5	GAL	A	608	2	11,11,12	0.57	0	15,15,17	1.18	2 (13%)
4	MAN	A	609	1	11,11,12	0.90	0	15,15,17	1.55	2 (13%)
4	MAN	A	610	1	11,11,12	1.19	2 (18%)	15,15,17	2.17	5 (33%)
4	MAN	A	611	1	11,11,12	0.85	1 (9%)	15,15,17	2.25	4 (26%)
2	NAG	A	612	1,2,6	14,14,15	0.54	0	15,19,21	0.32	0
2	NAG	A	613	3,2	14,14,15	0.17	0	15,19,21	0.49	0
6	FUC	A	614	2	10,10,11	0.78	0	13,14,16	0.85	0
3	BMA	A	615	2,4	11,11,12	2.08	3 (27%)	15,15,17	1.37	3 (20%)
4	MAN	A	616	3	11,11,12	0.97	1 (9%)	15,15,17	1.22	3 (20%)
4	MAN	A	617	3	11,11,12	1.52	2 (18%)	15,15,17	2.42	4 (26%)
2	NAG	A	618	1,2	14,14,15	0.65	0	15,19,21	0.58	0
2	NAG	A	619	2	14,14,15	0.39	0	15,19,21	0.30	0
2	NAG	A	620	1	14,14,15	0.28	0	15,19,21	0.73	0
2	NAG	A	621	1	14,14,15	0.35	0	15,19,21	0.51	0

In the following table, the Chirals column lists the number of chiral outliers, the number of chiral centers analysed, the number of these observed in the model and the number defined in the chemical component dictionary. Similar counts are reported in the Torsion and Rings columns. '-' means no outliers of that kind were identified.

Mol	Type	Chain	Res	Link	Chirals	Torsions	Rings
2	NAG	A	601	1,2	-	0/6/23/26	0/1/1/1
2	NAG	A	602	3,2	-	0/6/23/26	0/1/1/1
3	BMA	A	603	2,4	-	0/2/19/22	0/1/1/1
4	MAN	A	604	3,2	-	0/2/19/22	0/1/1/1
4	MAN	A	605	3,2	-	0/2/19/22	0/1/1/1
2	NAG	A	606	5,4	-	0/6/23/26	0/1/1/1
2	NAG	A	607	4	-	0/6/23/26	0/1/1/1
5	GAL	A	608	2	-	0/2/19/22	0/1/1/1
4	MAN	A	609	1	-	0/2/19/22	1/1/1/1
4	MAN	A	610	1	-	0/2/19/22	0/1/1/1

Continued on next page...

Continued from previous page...

Mol	Type	Chain	Res	Link	Chirals	Torsions	Rings
4	MAN	A	611	1	-	0/2/19/22	0/1/1/1
2	NAG	A	612	1,2,6	-	0/6/23/26	0/1/1/1
2	NAG	A	613	3,2	-	0/6/23/26	0/1/1/1
6	FUC	A	614	2	-	0/0/17/20	0/1/1/1
3	BMA	A	615	2,4	-	0/2/19/22	0/1/1/1
4	MAN	A	616	3	-	0/2/19/22	0/1/1/1
4	MAN	A	617	3	-	0/2/19/22	0/1/1/1
2	NAG	A	618	1,2	-	0/6/23/26	0/1/1/1
2	NAG	A	619	2	-	0/6/23/26	0/1/1/1
2	NAG	A	620	1	-	0/6/23/26	0/1/1/1
2	NAG	A	621	1	-	0/6/23/26	0/1/1/1

All (10) bond length outliers are listed below:

Mol	Chain	Res	Type	Atoms	Z	Observed(Å)	Ideal(Å)
3	A	615	BMA	O5-C1	-2.29	1.40	1.43
3	A	615	BMA	O3-C3	2.20	1.48	1.43
4	A	610	MAN	C2-C3	2.28	1.55	1.52
4	A	611	MAN	C1-C2	2.53	1.58	1.52
4	A	610	MAN	C1-C2	2.57	1.58	1.52
4	A	616	MAN	C1-C2	2.59	1.58	1.52
4	A	605	MAN	O5-C5	2.80	1.49	1.43
4	A	617	MAN	O5-C1	3.25	1.49	1.43
4	A	617	MAN	C1-C2	3.41	1.60	1.52
3	A	615	BMA	C2-C3	5.58	1.60	1.52

All (30) bond angle outliers are listed below:

Mol	Chain	Res	Type	Atoms	Z	Observed(°)	Ideal(°)
4	A	604	MAN	O2-C2-C3	-3.14	103.86	110.19
4	A	605	MAN	C1-C2-C3	-3.04	105.86	109.55
4	A	611	MAN	O2-C2-C3	-2.60	104.95	110.19
4	A	610	MAN	O2-C2-C3	-2.52	105.12	110.19
4	A	617	MAN	O2-C2-C3	-2.49	105.16	110.19
4	A	605	MAN	C3-C4-C5	-2.34	106.06	110.23
4	A	610	MAN	O5-C5-C4	-2.34	106.26	110.13
4	A	616	MAN	O2-C2-C3	-2.14	105.86	110.19
4	A	605	MAN	O3-C3-C2	2.01	113.70	110.01
3	A	615	BMA	O3-C3-C2	2.08	113.83	110.01
5	A	608	GAL	C1-C2-C3	2.10	112.09	109.55
4	A	616	MAN	C1-O5-C5	2.14	115.29	112.14
4	A	616	MAN	C1-C2-C3	2.26	112.28	109.55

Continued on next page...

Continued from previous page...

Mol	Chain	Res	Type	Atoms	Z	Observed(°)	Ideal(°)
5	A	608	GAL	C1-O5-C5	2.45	115.74	112.14
4	A	609	MAN	O5-C1-C2	2.58	115.02	110.89
3	A	615	BMA	C1-C2-C3	3.00	113.18	109.55
4	A	604	MAN	C1-O5-C5	3.03	116.60	112.14
3	A	615	BMA	C2-C3-C4	3.05	116.37	111.05
4	A	610	MAN	C1-O5-C5	3.24	116.91	112.14
4	A	617	MAN	C1-C2-C3	3.27	113.51	109.55
4	A	605	MAN	O3-C3-C4	3.35	117.91	110.36
4	A	617	MAN	O5-C1-C2	3.48	116.46	110.89
4	A	611	MAN	C1-C2-C3	3.91	114.29	109.55
4	A	609	MAN	C1-O5-C5	4.27	118.42	112.14
4	A	610	MAN	C1-C2-C3	4.49	114.99	109.55
4	A	611	MAN	C1-O5-C5	4.60	118.91	112.14
4	A	610	MAN	O5-C1-C2	4.67	118.37	110.89
4	A	605	MAN	C1-O5-C5	4.70	119.06	112.14
4	A	611	MAN	O5-C1-C2	4.91	118.75	110.89
4	A	617	MAN	C1-O5-C5	7.47	123.12	112.14

There are no chirality outliers.

There are no torsion outliers.

All (1) ring outliers are listed below:

Mol	Chain	Res	Type	Atoms
4	A	609	MAN	C1-C2-C3-C4-C5-O5

3 monomers are involved in 3 short contacts:

Mol	Chain	Res	Type	Clashes	Symm-Clashes
2	A	601	NAG	2	0
3	A	615	BMA	1	0
4	A	617	MAN	1	0

5.7 Other polymers [i](#)

There are no such residues in this entry.

5.8 Polymer linkage issues [i](#)

There are no chain breaks in this entry.

6 Fit of model and data ⓘ

6.1 Protein, DNA and RNA chains ⓘ

In the following table, the column labelled ‘#RSRZ> 2’ contains the number (and percentage) of RSRZ outliers, followed by percent RSRZ outliers for the chain as percentile scores relative to all X-ray entries and entries of similar resolution. The OWAB column contains the minimum, median, 95th percentile and maximum values of the occupancy-weighted average B-factor per residue. The column labelled ‘Q< 0.9’ lists the number of (and percentage) of residues with an average occupancy less than 0.9.

Mol	Chain	Analysed	<RSRZ>	#RSRZ>2	OWAB(Å ²)	Q<0.9
1	A	552/557 (99%)	0.34	20 (3%) 46 39	107, 147, 199, 280	0

All (20) RSRZ outliers are listed below:

Mol	Chain	Res	Type	RSRZ
1	A	76	ILE	5.4
1	A	74	PHE	4.2
1	A	78	ALA	3.8
1	A	21	LEU	3.5
1	A	269	TYR	3.0
1	A	77	ILE	2.9
1	A	94	LEU	2.9
1	A	75	GLU	2.8
1	A	9	MET	2.8
1	A	297	LEU	2.8
1	A	5	ILE	2.8
1	A	96	ILE	2.6
1	A	270	PHE	2.6
1	A	49	ASN	2.4
1	A	46	GLU	2.4
1	A	480	PHE	2.4
1	A	519	PHE	2.4
1	A	51	PHE	2.2
1	A	73	SER	2.1
1	A	44	ASP	2.1

6.2 Non-standard residues in protein, DNA, RNA chains ⓘ

There are no non-standard protein/DNA/RNA residues in this entry.

6.3 Carbohydrates ⓘ

There are no carbohydrates in this entry.

6.4 Ligands ⓘ

In the following table, the Atoms column lists the number of modelled atoms in the group and the number defined in the chemical component dictionary. LLDF column lists the quality of electron density of the group with respect to its neighbouring residues in protein, DNA or RNA chains. The B-factors column lists the minimum, median, 95th percentile and maximum values of B factors of atoms in the group. The column labelled 'Q< 0.9' lists the number of atoms with occupancy less than 0.9.

Mol	Type	Chain	Res	Atoms	RSCC	RSR	LLDF	B-factors(Å ²)	Q<0.9
7	CA	A	629	1/1	0.83	0.40	7.32	218,218,218,218	0
7	CA	A	631	1/1	0.97	0.36	6.83	173,173,173,173	0
7	CA	A	630	1/1	0.87	0.31	3.45	129,129,129,129	0
7	CA	A	623	1/1	0.94	0.33	3.27	167,167,167,167	0
7	CA	A	622	1/1	0.97	0.27	2.93	160,160,160,160	0
7	CA	A	626	1/1	0.87	0.29	2.06	133,133,133,133	0
7	CA	A	624	1/1	0.95	0.31	2.04	146,146,146,146	0
7	CA	A	632	1/1	0.91	0.29	1.98	114,114,114,114	0
7	CA	A	628	1/1	0.92	0.28	1.38	137,137,137,137	0
2	NAG	A	606	14/15	0.73	0.33	1.22	198,231,274,278	0
7	CA	A	627	1/1	0.83	0.26	0.33	124,124,124,124	0
4	MAN	A	609	11/12	0.80	0.28	0.16	171,203,238,243	0
7	CA	A	625	1/1	0.96	0.19	-0.42	168,168,168,168	0
2	NAG	A	621	14/15	0.80	0.20	-0.60	159,198,245,252	0
4	MAN	A	611	11/12	0.91	0.22	-0.79	142,173,207,239	0
2	NAG	A	601	14/15	0.84	0.15	-0.85	183,207,244,248	0
2	NAG	A	618	14/15	0.90	0.16	-1.11	151,199,238,247	0
4	MAN	A	605	11/12	0.63	0.17	-1.39	178,220,264,273	0
2	NAG	A	612	14/15	0.88	0.17	-1.40	127,170,206,208	0
4	MAN	A	610	11/12	0.92	0.20	-1.97	149,186,223,233	0
2	NAG	A	602	14/15	0.91	0.17	-	182,207,245,248	0
3	BMA	A	615	11/12	0.86	0.08	-	208,227,268,272	0
4	MAN	A	604	11/12	0.82	0.11	-	169,210,264,269	0
6	FUC	A	614	10/11	0.86	0.25	-	160,192,231,231	0
8	CL	A	634	1/1	0.81	0.08	-	114,114,114,114	0
8	CL	A	633	1/1	0.57	0.33	-	160,160,160,160	0
2	NAG	A	620	14/15	0.81	0.19	-	185,221,258,265	0
4	MAN	A	617	11/12	0.90	0.15	-	201,229,269,274	0
2	NAG	A	619	14/15	0.79	0.21	-	189,227,277,282	0
5	GAL	A	608	11/12	0.79	0.25	-	178,213,247,266	0

Continued on next page...

Continued from previous page...

Mol	Type	Chain	Res	Atoms	RSCC	RSR	LLDF	B-factors(\AA^2)	Q<0.9
3	BMA	A	603	11/12	0.71	0.15	-	187,217,255,260	0
4	MAN	A	616	11/12	0.71	0.25	-	198,232,275,279	0
2	NAG	A	607	14/15	0.85	0.27	-	190,228,277,292	0
2	NAG	A	613	14/15	0.90	0.15	-	157,198,234,254	0

6.5 Other polymers [i](#)

There are no such residues in this entry.