



Full wwPDB X-ray Structure Validation Report ⓘ

Jan 31, 2016 – 08:12 PM GMT

PDB ID : 1J8H
Title : Crystal Structure of a Complex of a Human alpha/beta-T cell Receptor, Influenza HA Antigen Peptide, and MHC Class II Molecule, HLA-DR4
Authors : Hennecke, J.; Wiley, D.C.
Deposited on : 2001-05-21
Resolution : 2.40 Å(reported)

This is a Full wwPDB X-ray Structure Validation Report for a publicly released PDB entry.
We welcome your comments at validation@mail.wwpdb.org
A user guide is available at
<http://wwpdb.org/validation/2016/XrayValidationReportHelp>
with specific help available everywhere you see the ⓘ symbol.

The following versions of software and data (see [references ⓘ](#)) were used in the production of this report:

MolProbity : 4.02b-467
Mogul : 1.7 (RC4), CSD as536be (2015)
Xtriage (Phenix) : 1.9-1692
EDS : rb-20026688
Percentile statistics : 20151230.v01 (using entries in the PDB archive December 30th 2015)
Refmac : 5.8.0135
CCP4 : 6.5.0
Ideal geometry (proteins) : Engh & Huber (2001)
Ideal geometry (DNA, RNA) : Parkinson et al. (1996)
Validation Pipeline (wwPDB-VP) : trunk26865

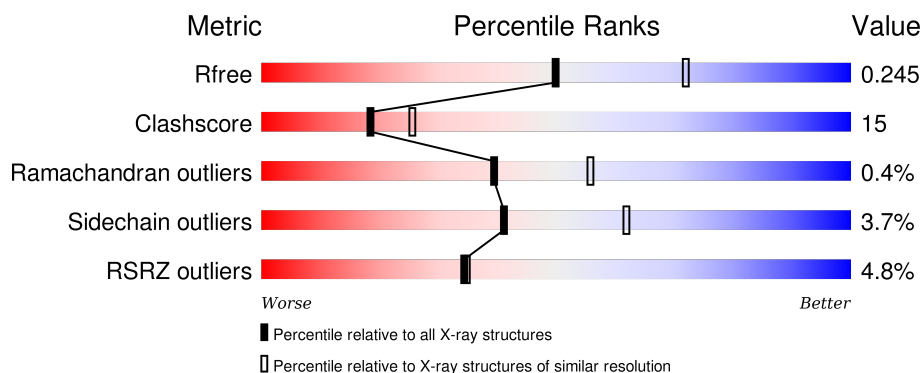
1 Overall quality at a glance

The following experimental techniques were used to determine the structure:

X-RAY DIFFRACTION

The reported resolution of this entry is 2.40 Å.

Percentile scores (ranging between 0-100) for global validation metrics of the entry are shown in the following graphic. The table shows the number of entries on which the scores are based.



Metric	Whole archive (#Entries)	Similar resolution (#Entries, resolution range(Å))
R_{free}	91344	2919 (2.40-2.40)
Clashscore	102246	3407 (2.40-2.40)
Ramachandran outliers	100387	3351 (2.40-2.40)
Sidechain outliers	100360	3352 (2.40-2.40)
RSRZ outliers	91569	2928 (2.40-2.40)

The table below summarises the geometric issues observed across the polymeric chains and their fit to the electron density. The red, orange, yellow and green segments on the lower bar indicate the fraction of residues that contain outliers for ≥ 3 , 2, 1 and 0 types of geometric quality criteria. A grey segment represents the fraction of residues that are not modelled. The numeric value for each fraction is indicated below the corresponding segment, with a dot representing fractions $\leq 5\%$. The upper red bar (where present) indicates the fraction of residues that have poor fit to the electron density. The numeric value is given above the bar.

Mol	Chain	Length	Quality of chain
1	A	181	<div> <div>3%</div> <div>71% 26% ..</div> </div>
2	B	192	<div> <div>3%</div> <div>68% 23% • 6%</div> </div>
3	C	13	<div> <div>85% 8% 8%</div> </div>
4	D	212	<div> <div>8%</div> <div>66% 25% • 7%</div> </div>
5	E	246	<div> <div>4%</div> <div>70% 25% ..</div> </div>

The following table lists non-polymeric compounds, carbohydrate monomers and non-standard residues in protein, DNA, RNA chains that are outliers for geometric or electron-density-fit criteria:

Mol	Type	Chain	Res	Chirality	Geometry	Clashes	Electron density
7	NAG	A	511	-	-	-	X

2 Entry composition

There are 9 unique types of molecules in this entry. The entry contains 6908 atoms, of which 0 are hydrogens and 0 are deuteriums.

In the tables below, the ZeroOcc column contains the number of atoms modelled with zero occupancy, the AltConf column contains the number of residues with at least one atom in alternate conformation and the Trace column contains the number of residues modelled with at most 2 atoms.

- Molecule 1 is a protein called HLA CLASS II HISTOCOMPATIBILITY ANTIGEN, DR ALPHA CHAIN.

Mol	Chain	Residues	Atoms					ZeroOcc	AltConf	Trace
1	A	180	Total	C	N	O	S	0	0	0
			1483	960	241	277	5			

- Molecule 2 is a protein called HLA CLASS II HISTOCOMPATIBILITY ANTIGEN, DR-4 BETA CHAIN.

Mol	Chain	Residues	Atoms					ZeroOcc	AltConf	Trace
2	B	180	Total	C	N	O	S	0	0	0
			1491	944	262	280	5			

There is a discrepancy between the modelled and reference sequences:

Chain	Residue	Modelled	Actual	Comment	Reference
B	180	VAL	LEU	CONFLICT	UNP P13760

- Molecule 3 is a protein called HEMAGGLUTININ HA1 PEPTIDE CHAIN.

Mol	Chain	Residues	Atoms				ZeroOcc	AltConf	Trace
3	C	13	Total	C	N	O	0	0	0
			106	69	18	19			

- Molecule 4 is a protein called T-CELL RECEPTOR ALPHA CHAIN.

Mol	Chain	Residues	Atoms					ZeroOcc	AltConf	Trace
4	D	198	Total	C	N	O	S	0	0	0
			1529	969	248	305	7			

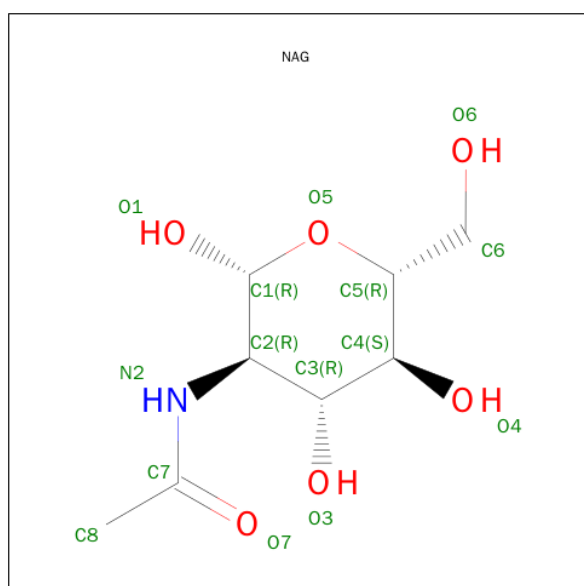
- Molecule 5 is a protein called T-CELL RECEPTOR BETA CHAIN.

Mol	Chain	Residues	Atoms					ZeroOcc	AltConf	Trace
5	E	241	Total	C	N	O	S	0	0	0
			1938	1227	332	371	8			

There is a discrepancy between the modelled and reference sequences:

Chain	Residue	Modelled	Actual	Comment	Reference
E	192	SER	CYS	ENGINEERED	PIR S18894

- Molecule 6 is SUGAR (N-ACETYL-D-GLUCOSAMINE) (three-letter code: NAG) (formula: $C_8H_{15}NO_6$).

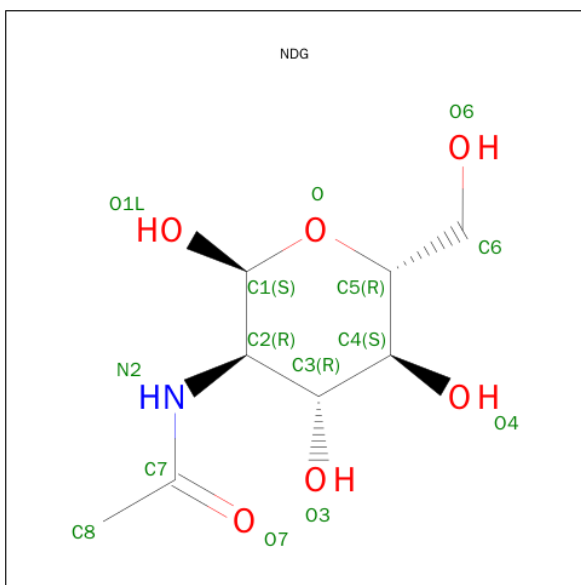


Mol	Chain	Residues	Atoms				ZeroOcc	AltConf
6	A	1	Total	C	N	O	0	0
			14	8	1	5		

- Molecule 7 is a polymer of unknown type called SUGAR (NAG-NAG).

Mol	Chain	Residues	Atoms				ZeroOcc	AltConf
7	A	2	Total	C	N	O	0	0
			28	16	2	10		

- Molecule 8 is SUGAR (2-(ACETYLAMINO)-2-DEOXY-A-D-GLUCOPYRANOSE) (three-letter code: NDG) (formula: $C_8H_{15}NO_6$).



Mol	Chain	Residues	Atoms				ZeroOcc	AltConf
8	B	1	Total	C	N	O	0	0
			14	8	1	5		

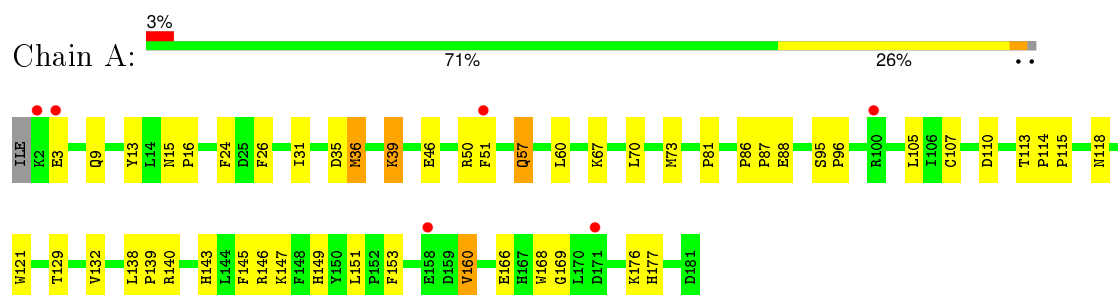
- Molecule 9 is water.

Mol	Chain	Residues	Atoms		ZeroOcc	AltConf
9	A	72	Total	O	0	0
			72	72		
9	B	71	Total	O	0	0
			71	71		
9	C	6	Total	O	0	0
			6	6		
9	D	55	Total	O	0	0
			55	55		
9	E	101	Total	O	0	0
			101	101		

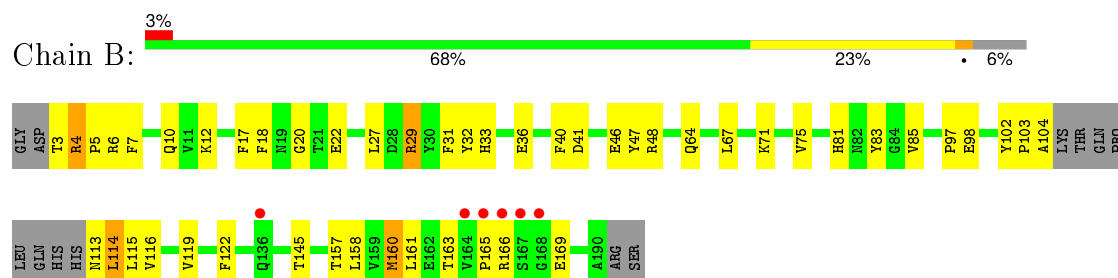
3 Residue-property plots [i](#)

These plots are drawn for all protein, RNA and DNA chains in the entry. The first graphic for a chain summarises the proportions of errors displayed in the second graphic. The second graphic shows the sequence view annotated by issues in geometry and electron density. Residues are color-coded according to the number of geometric quality criteria for which they contain at least one outlier: green = 0, yellow = 1, orange = 2 and red = 3 or more. A red dot above a residue indicates a poor fit to the electron density ($RSRZ > 2$). Stretches of 2 or more consecutive residues without any outlier are shown as a green connector. Residues present in the sample, but not in the model, are shown in grey.

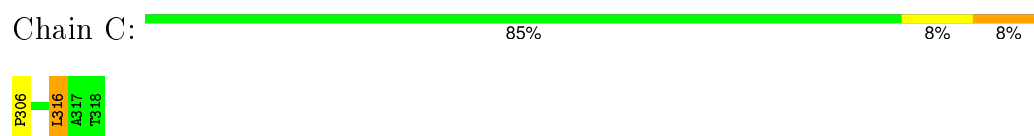
- Molecule 1: HLA CLASS II HISTOCOMPATIBILITY ANTIGEN, DR ALPHA CHAIN



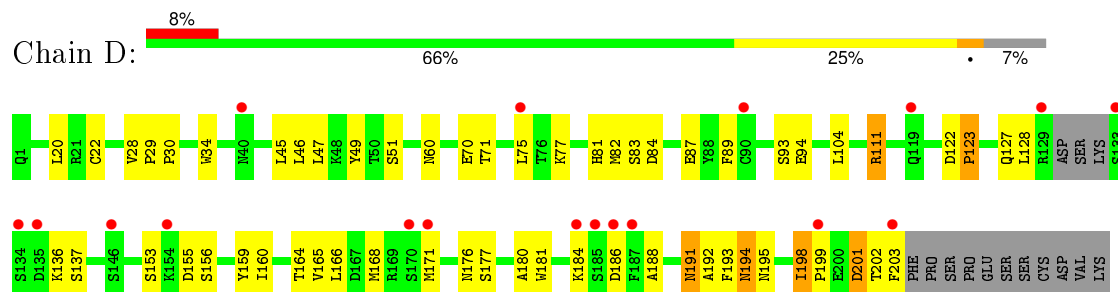
- Molecule 2: HLA CLASS II HISTOCOMPATIBILITY ANTIGEN, DR-4 BETA CHAIN



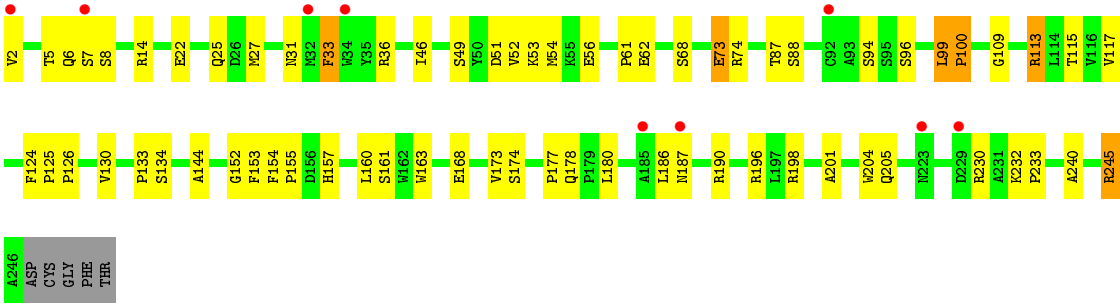
- Molecule 3: HEMAGGLUTININ HA1 PEPTIDE CHAIN



- Molecule 4: T-CELL RECEPTOR ALPHA CHAIN



- Molecule 5: T-CELL RECEPTOR BETA CHAIN



4 Data and refinement statistics

Property	Value	Source
Space group	C 1 2 1	Depositor
Cell constants a, b, c, α , β , γ	143.75Å 73.32Å 123.03Å 90.00° 108.52° 90.00°	Depositor
Resolution (Å)	19.81 – 2.40 19.81 – 2.40	Depositor EDS
% Data completeness (in resolution range)	96.8 (19.81-2.40) 96.9 (19.81-2.40)	Depositor EDS
R_{merge}	0.06	Depositor
R_{sym}	(Not available)	Depositor
$\langle I/\sigma(I) \rangle$ ¹	3.85 (at 2.41Å)	Xtriage
Refinement program	CNS 1.0	Depositor
R, R_{free}	0.211 , 0.246 0.211 , 0.245	Depositor DCC
R_{free} test set	2280 reflections (4.94%)	DCC
Wilson B-factor (Å ²)	46.0	Xtriage
Anisotropy	0.067	Xtriage
Bulk solvent k_{sol} (e/Å ³), B_{sol} (Å ²)	0.34 , 43.8	EDS
Estimated twinning fraction	No twinning to report.	Xtriage
L-test for twinning ²	$\langle L \rangle = 0.49$, $\langle L^2 \rangle = 0.33$	Xtriage
Outliers	0 of 46214 reflections	Xtriage
F_o, F_c correlation	0.95	EDS
Total number of atoms	6908	wwPDB-VP
Average B, all atoms (Å ²)	46.0	wwPDB-VP

Xtriage's analysis on translational NCS is as follows: *The largest off-origin peak in the Patterson function is 4.45% of the height of the origin peak. No significant pseudotranslation is detected.*

¹Intensities estimated from amplitudes.

²Theoretical values of $\langle |L| \rangle$, $\langle L^2 \rangle$ for acentric reflections are 0.5, 0.375 respectively for untwinned datasets, and 0.333, 0.2 for perfectly twinned datasets.

5 Model quality [i](#)

5.1 Standard geometry [i](#)

Bond lengths and bond angles in the following residue types are not validated in this section: NAG, NDG

The Z score for a bond length (or angle) is the number of standard deviations the observed value is removed from the expected value. A bond length (or angle) with $|Z| > 5$ is considered an outlier worth inspection. RMSZ is the root-mean-square of all Z scores of the bond lengths (or angles).

Mol	Chain	Bond lengths		Bond angles	
		RMSZ	$\# Z > 5$	RMSZ	$\# Z > 5$
1	A	0.42	0/1528	0.67	1/2081 (0.0%)
2	B	0.39	0/1531	0.66	0/2080
3	C	0.42	0/107	0.72	0/141
4	D	0.43	0/1564	0.69	1/2126 (0.0%)
5	E	0.39	0/1988	0.65	0/2696
All	All	0.41	0/6718	0.67	2/9124 (0.0%)

There are no bond length outliers.

All (2) bond angle outliers are listed below:

Mol	Chain	Res	Type	Atoms	Z	Observed($^{\circ}$)	Ideal($^{\circ}$)
1	A	88	GLU	N-CA-C	-5.45	96.28	111.00
4	D	137	SER	N-CA-C	-5.14	97.13	111.00

There are no chirality outliers.

There are no planarity outliers.

5.2 Too-close contacts [i](#)

In the following table, the Non-H and H(model) columns list the number of non-hydrogen atoms and hydrogen atoms in the chain respectively. The H(added) column lists the number of hydrogen atoms added and optimized by MolProbity. The Clashes column lists the number of clashes within the asymmetric unit, whereas Symm-Clashes lists symmetry related clashes.

Mol	Chain	Non-H	H(model)	H(added)	Clashes	Symm-Clashes
1	A	1483	0	1418	42	0
2	B	1491	0	1402	48	0
3	C	106	0	119	3	0
4	D	1529	0	1459	68	0

Continued on next page...

Continued from previous page...

Mol	Chain	Non-H	H(model)	H(added)	Clashes	Symm-Clashes
5	E	1938	0	1866	59	0
6	A	14	0	13	0	0
7	A	28	0	25	3	0
8	B	14	0	13	1	0
9	A	72	0	0	3	0
9	B	71	0	0	1	0
9	C	6	0	0	0	0
9	D	55	0	0	0	0
9	E	101	0	0	7	0
All	All	6908	0	6315	200	0

The all-atom clashscore is defined as the number of clashes found per 1000 atoms (including hydrogen atoms). The all-atom clashscore for this structure is 15.

All (200) close contacts within the same asymmetric unit are listed below, sorted by their clash magnitude.

Atom-1	Atom-2	Interatomic distance (Å)	Clash overlap (Å)
4:D:198:ILE:H	4:D:198:ILE:HD12	0.98	1.11
4:D:198:ILE:CD1	4:D:198:ILE:H	1.69	0.96
4:D:198:ILE:N	4:D:198:ILE:HD12	1.78	0.95
4:D:171:MET:HE2	9:E:343:HOH:O	1.69	0.93
4:D:28:VAL:HG22	4:D:29:PRO:HD2	1.57	0.87
1:A:39:LYS:HG2	1:A:60:LEU:HD11	1.56	0.85
4:D:202:THR:HG21	9:E:334:HOH:O	1.80	0.81
2:B:3:THR:HG22	2:B:4:ARG:H	1.46	0.79
2:B:29:ARG:HG2	2:B:36:GLU:OE2	1.82	0.79
2:B:116:VAL:HG22	2:B:160:MET:HG2	1.62	0.79
5:E:130:VAL:HG23	5:E:240:ALA:HB3	1.66	0.78
2:B:27:LEU:HD23	2:B:41:ASP:HA	1.66	0.77
5:E:245:ARG:HH11	5:E:245:ARG:HB2	1.49	0.76
4:D:111:ARG:HH11	4:D:111:ARG:HG2	1.50	0.75
2:B:113:ASN:HD22	2:B:165:PRO:HD2	1.53	0.74
1:A:39:LYS:CG	1:A:60:LEU:HD11	2.18	0.73
4:D:202:THR:HG22	4:D:203:PHE:N	2.02	0.72
4:D:166:LEU:HB3	5:E:174:SER:HB3	1.71	0.72
4:D:202:THR:HG22	4:D:203:PHE:H	1.55	0.71
5:E:51:ASP:OD2	9:E:295:HOH:O	2.09	0.71
5:E:126:PRO:HB3	5:E:153:PHE:HB3	1.71	0.70
4:D:168:MET:CE	5:E:198:ARG:HD3	2.22	0.70
1:A:118:ASN:HB2	1:A:166:GLU:HB2	1.72	0.70
5:E:73:GLU:HG2	9:E:322:HOH:O	1.93	0.69

Continued on next page...

Continued from previous page...

Atom-1	Atom-2	Interatomic distance (Å)	Clash overlap (Å)
4:D:111:ARG:HG2	4:D:111:ARG:NH1	2.06	0.68
2:B:116:VAL:HG22	2:B:160:MET:CG	2.22	0.68
5:E:117:VAL:HB	9:E:344:HOH:O	1.93	0.68
1:A:57:GLN:H	1:A:57:GLN:NE2	1.91	0.67
4:D:168:MET:HE1	5:E:198:ARG:HD3	1.76	0.66
4:D:198:ILE:HG22	4:D:199:PRO:HD2	1.78	0.65
4:D:165:VAL:HG22	4:D:176:ASN:ND2	2.11	0.65
5:E:115:THR:OG1	5:E:157:HIS:HE1	1.80	0.65
1:A:110:ASP:OD2	9:A:577:HOH:O	2.15	0.65
5:E:230:ARG:HH12	5:E:233:PRO:HG3	1.62	0.65
4:D:70:GLU:O	4:D:71:THR:HG22	1.97	0.64
2:B:85:VAL:HG13	3:C:306:PRO:HB2	1.80	0.63
4:D:191:ASN:HD22	4:D:192:ALA:N	1.96	0.63
2:B:22:GLU:OE1	8:B:521:NDG:H2	1.97	0.63
1:A:115:PRO:HG3	1:A:145:PHE:CE1	2.33	0.63
2:B:3:THR:HG22	2:B:4:ARG:HG2	1.81	0.63
5:E:230:ARG:NH1	5:E:233:PRO:HG3	2.15	0.62
4:D:28:VAL:HG22	4:D:29:PRO:CD	2.29	0.62
2:B:3:THR:HG22	2:B:4:ARG:N	2.14	0.61
5:E:61:PRO:HD2	5:E:62:GLU:OE2	2.00	0.61
4:D:198:ILE:CD1	4:D:198:ILE:N	2.49	0.61
5:E:49:SER:HA	5:E:54:MET:HE2	1.82	0.61
5:E:52:VAL:HG12	5:E:53:LYS:HD3	1.82	0.60
1:A:176:LYS:HD2	9:A:578:HOH:O	2.01	0.60
4:D:71:THR:HG23	4:D:71:THR:O	2.01	0.60
4:D:122:ASP:N	4:D:123:PRO:HD3	2.17	0.60
4:D:123:PRO:HB2	4:D:201:ASP:HA	1.83	0.59
5:E:54:MET:HE3	5:E:56:GLU:HG2	1.84	0.59
2:B:29:ARG:CG	2:B:36:GLU:OE2	2.50	0.58
2:B:104:ALA:C	2:B:114:LEU:H	2.07	0.58
4:D:159:TYR:O	4:D:180:ALA:HA	2.04	0.58
2:B:166:ARG:HB2	2:B:169:GLU:OE1	2.04	0.57
4:D:177:SER:OG	5:E:196:ARG:HD3	2.04	0.57
4:D:49:TYR:CZ	4:D:51:SER:HA	2.39	0.57
1:A:147:LYS:HZ2	1:A:149:HIS:HE1	1.51	0.57
1:A:129:THR:O	1:A:132:VAL:HG22	2.05	0.57
2:B:10:GLN:HB2	2:B:31:PHE:HB2	1.85	0.56
1:A:143:HIS:HD2	2:B:12:LYS:NZ	2.03	0.56
2:B:145:THR:HG22	2:B:158:LEU:H	1.71	0.56
1:A:147:LYS:NZ	1:A:149:HIS:CE1	2.74	0.56
2:B:4:ARG:HG2	2:B:4:ARG:HH11	1.71	0.55

Continued on next page...

Continued from previous page...

Atom-1	Atom-2	Interatomic distance (Å)	Clash overlap (Å)
5:E:133:PRO:HD2	5:E:204:TRP:CZ2	2.40	0.55
1:A:15:ASN:ND2	1:A:70:LEU:HD23	2.21	0.55
5:E:152:GLY:O	5:E:190:ARG:HD3	2.06	0.55
1:A:16:PRO:HD2	2:B:6:ARG:HD3	1.89	0.55
2:B:31:PHE:CE1	2:B:36:GLU:HB2	2.41	0.55
1:A:132:VAL:HG12	1:A:151:LEU:HD13	1.88	0.55
2:B:64:GLN:OE1	5:E:100:PRO:HG2	2.07	0.55
4:D:193:PHE:O	4:D:195:ASN:N	2.40	0.55
4:D:93:SER:HB2	4:D:104:LEU:HD22	1.87	0.55
4:D:201:ASP:OD1	4:D:203:PHE:CE1	2.60	0.55
4:D:155:ASP:OD2	4:D:156:SER:N	2.40	0.55
1:A:140:ARG:HG3	1:A:146:ARG:HG3	1.89	0.54
5:E:7:SER:HB3	5:E:22:GLU:HB2	1.89	0.54
4:D:111:ARG:HH11	4:D:111:ARG:CG	2.20	0.54
4:D:168:MET:HE2	5:E:198:ARG:HB3	1.90	0.53
1:A:147:LYS:NZ	1:A:149:HIS:HE1	2.06	0.53
4:D:191:ASN:HD22	4:D:191:ASN:C	2.12	0.53
1:A:95:SER:HB2	1:A:96:PRO:HD2	1.91	0.53
2:B:4:ARG:CG	2:B:4:ARG:HH11	2.21	0.53
4:D:28:VAL:CG2	4:D:29:PRO:HD2	2.35	0.52
4:D:168:MET:HE2	5:E:198:ARG:HD3	1.91	0.52
1:A:16:PRO:CD	2:B:6:ARG:HD3	2.39	0.52
4:D:127:GLN:O	5:E:134:SER:HB2	2.09	0.52
5:E:54:MET:CE	5:E:56:GLU:HG2	2.40	0.52
4:D:188:ALA:O	4:D:191:ASN:ND2	2.43	0.52
5:E:130:VAL:HG23	5:E:240:ALA:CB	2.37	0.52
5:E:201:ALA:O	5:E:205:GLN:HG3	2.10	0.52
2:B:161:LEU:HG	2:B:163:THR:HG23	1.91	0.52
2:B:75:VAL:HG13	9:B:534:HOH:O	2.10	0.51
4:D:93:SER:HB2	4:D:104:LEU:CD2	2.41	0.51
4:D:47:LEU:HD12	4:D:47:LEU:C	2.31	0.51
2:B:67:LEU:HD12	5:E:100:PRO:HG3	1.91	0.51
4:D:171:MET:CE	9:E:343:HOH:O	2.43	0.51
1:A:3:GLU:HA	2:B:18:PHE:CD2	2.46	0.50
2:B:3:THR:CG2	2:B:4:ARG:H	2.22	0.50
5:E:33:PHE:CD1	5:E:33:PHE:N	2.78	0.50
5:E:87:THR:HG23	5:E:115:THR:HA	1.94	0.50
5:E:113:ARG:HD2	9:E:286:HOH:O	2.11	0.50
1:A:51:PHE:O	3:C:306:PRO:HD2	2.12	0.50
1:A:95:SER:HB2	1:A:96:PRO:CD	2.42	0.50
4:D:136:LYS:HD3	4:D:181:TRP:CD1	2.47	0.50

Continued on next page...

Continued from previous page...

Atom-1	Atom-2	Interatomic distance (Å)	Clash overlap (Å)
5:E:115:THR:OG1	5:E:157:HIS:CE1	2.62	0.50
2:B:7:PHE:HA	2:B:33:HIS:HE1	1.76	0.50
4:D:166:LEU:HB3	5:E:174:SER:CB	2.42	0.49
5:E:14:ARG:HA	5:E:117:VAL:O	2.13	0.49
1:A:147:LYS:HZ2	1:A:149:HIS:CE1	2.30	0.49
5:E:2:VAL:HA	5:E:27:MET:SD	2.52	0.49
5:E:96:SER:HB3	5:E:99:LEU:HD22	1.95	0.48
1:A:36:MET:HE2	1:A:36:MET:N	2.28	0.48
4:D:122:ASP:N	4:D:123:PRO:CD	2.76	0.48
4:D:153:SER:HA	4:D:160:ILE:HD12	1.95	0.48
5:E:186:LEU:N	5:E:186:LEU:HD12	2.29	0.48
2:B:46:GLU:OE2	2:B:48:ARG:NH1	2.46	0.48
5:E:180:LEU:O	5:E:180:LEU:HD12	2.14	0.48
4:D:166:LEU:HD12	4:D:166:LEU:C	2.35	0.47
4:D:184:LYS:HE3	4:D:186:ASP:OD1	2.14	0.47
2:B:29:ARG:HB3	2:B:31:PHE:CE2	2.49	0.47
2:B:17:PHE:CE2	2:B:83:TYR:HB2	2.49	0.47
2:B:40:PHE:HB2	2:B:47:TYR:CE1	2.50	0.47
4:D:81:HIS:HD2	4:D:82:MET:N	2.11	0.47
4:D:29:PRO:HA	4:D:30:PRO:HD3	1.71	0.47
5:E:160:LEU:HD23	5:E:161:SER:N	2.30	0.47
1:A:113:THR:OG1	1:A:114:PRO:HA	2.15	0.47
4:D:87:GLU:HG2	4:D:89:PHE:CZ	2.51	0.46
2:B:4:ARG:CG	2:B:4:ARG:NH1	2.79	0.46
5:E:62:GLU:CD	5:E:62:GLU:H	2.19	0.46
2:B:32:TYR:O	2:B:33:HIS:HB2	2.15	0.46
1:A:86:PRO:HG3	1:A:169:GLY:O	2.16	0.46
5:E:163:TRP:CE2	5:E:168:GLU:HG3	2.51	0.46
5:E:25:GLN:HB2	5:E:27:MET:HE2	1.97	0.46
4:D:153:SER:HB3	4:D:160:ILE:HG13	1.98	0.46
5:E:177:PRO:O	5:E:178:GLN:HG3	2.14	0.46
2:B:47:TYR:OH	2:B:71:LYS:HE3	2.16	0.46
4:D:166:LEU:CB	5:E:174:SER:HB3	2.42	0.45
5:E:36:ARG:HB3	5:E:46:ILE:HD11	1.98	0.45
5:E:6:GLN:HE21	5:E:109:GLY:HA3	1.82	0.45
2:B:17:PHE:HB3	2:B:20:GLY:O	2.16	0.45
4:D:60:ASN:O	4:D:77:LYS:NZ	2.50	0.45
5:E:154:PHE:CD1	5:E:155:PRO:HA	2.52	0.45
4:D:153:SER:CA	4:D:160:ILE:HD12	2.47	0.44
1:A:160:VAL:HG13	1:A:177:HIS:CE1	2.52	0.44
1:A:73:MET:HG2	3:C:316:LEU:HD23	1.99	0.44

Continued on next page...

Continued from previous page...

Atom-1	Atom-2	Interatomic distance (Å)	Clash overlap (Å)
2:B:113:ASN:ND2	2:B:165:PRO:HD2	2.27	0.44
1:A:168:TRP:CE2	7:A:511:NAG:H83	2.52	0.44
2:B:113:ASN:HD22	2:B:165:PRO:CD	2.25	0.44
1:A:9:GLN:HG3	1:A:24:PHE:CE1	2.52	0.44
1:A:143:HIS:HD2	2:B:12:LYS:HZ1	1.64	0.44
5:E:245:ARG:HH11	5:E:245:ARG:CB	2.25	0.44
4:D:81:HIS:CD2	4:D:82:MET:N	2.87	0.43
4:D:193:PHE:C	4:D:195:ASN:H	2.21	0.43
1:A:168:TRP:NE1	7:A:511:NAG:H83	2.34	0.43
1:A:50:ARG:NH2	9:A:538:HOH:O	2.47	0.43
4:D:128:LEU:N	4:D:128:LEU:HD12	2.34	0.43
2:B:81:HIS:O	2:B:85:VAL:HG23	2.18	0.43
1:A:81:PRO:HB3	2:B:5:PRO:HB3	2.00	0.43
4:D:198:ILE:CG2	4:D:199:PRO:HD2	2.47	0.43
1:A:138:LEU:HA	1:A:139:PRO:HD3	1.80	0.43
5:E:232:LYS:HA	5:E:233:PRO:HD3	1.84	0.43
5:E:160:LEU:C	5:E:160:LEU:HD23	2.39	0.43
4:D:34:TRP:CE2	4:D:75:LEU:HB2	2.53	0.43
4:D:202:THR:CG2	4:D:203:PHE:N	2.75	0.43
2:B:97:PRO:HA	2:B:122:PHE:HB3	2.01	0.43
1:A:86:PRO:HA	1:A:87:PRO:HD3	1.90	0.42
2:B:3:THR:CG2	2:B:4:ARG:N	2.82	0.42
4:D:165:VAL:HG22	4:D:176:ASN:HD22	1.83	0.42
1:A:160:VAL:HG13	1:A:177:HIS:HE1	1.83	0.42
2:B:119:VAL:HB	2:B:157:THR:HG22	2.01	0.42
5:E:31:ASN:O	5:E:94:SER:HA	2.19	0.42
5:E:99:LEU:HD12	5:E:99:LEU:HA	1.82	0.42
1:A:3:GLU:HA	2:B:18:PHE:CE2	2.55	0.42
4:D:22:CYS:HB2	4:D:34:TRP:CZ2	2.54	0.42
4:D:46:LEU:HA	4:D:46:LEU:HD23	1.92	0.42
2:B:29:ARG:HG2	2:B:29:ARG:HH11	1.85	0.41
5:E:133:PRO:HG2	5:E:144:ALA:HB1	2.02	0.41
4:D:164:THR:HG22	4:D:165:VAL:N	2.36	0.41
5:E:99:LEU:HA	5:E:100:PRO:HD3	1.71	0.41
1:A:35:ASP:OD1	1:A:35:ASP:C	2.59	0.41
1:A:26:PHE:HB2	1:A:31:ILE:HD11	2.03	0.41
4:D:28:VAL:HG11	4:D:94:GLU:HG2	2.01	0.41
4:D:77:LYS:HE2	4:D:84:ASP:OD2	2.20	0.41
4:D:202:THR:CG2	4:D:203:PHE:H	2.29	0.41
4:D:191:ASN:HB2	4:D:194:ASN:ND2	2.35	0.41
2:B:102:TYR:HA	2:B:103:PRO:HD3	1.87	0.41

Continued on next page...

Continued from previous page...

Atom-1	Atom-2	Interatomic distance (Å)	Clash overlap (Å)
5:E:74:ARG:HH11	5:E:74:ARG:HB2	1.85	0.41
4:D:123:PRO:HB2	4:D:201:ASP:CA	2.48	0.41
5:E:133:PRO:CG	5:E:144:ALA:HB1	2.50	0.41
2:B:17:PHE:CZ	2:B:83:TYR:HB2	2.56	0.41
7:A:511:NAG:H62	7:A:512:NDG:H5	2.02	0.41
1:A:13:TYR:CZ	1:A:67:LYS:HG2	2.56	0.41
5:E:173:VAL:HG12	5:E:174:SER:N	2.35	0.41
1:A:107:CYS:HB2	1:A:121:TRP:CH2	2.55	0.41
5:E:87:THR:O	5:E:88:SER:HB2	2.21	0.40
5:E:124:PHE:HA	5:E:125:PRO:HD3	1.92	0.40
4:D:81:HIS:CD2	4:D:83:SER:H	2.40	0.40
1:A:105:LEU:HG	1:A:153:PHE:CE1	2.57	0.40

There are no symmetry-related clashes.

5.3 Torsion angles ⓘ

5.3.1 Protein backbone ⓘ

In the following table, the Percentiles column shows the percent Ramachandran outliers of the chain as a percentile score with respect to all X-ray entries followed by that with respect to entries of similar resolution.

The Analysed column shows the number of residues for which the backbone conformation was analysed, and the total number of residues.

Mol	Chain	Analysed	Favoured	Allowed	Outliers	Percentiles	
1	A	178/181 (98%)	174 (98%)	4 (2%)	0	100	100
2	B	176/192 (92%)	170 (97%)	6 (3%)	0	100	100
3	C	11/13 (85%)	11 (100%)	0	0	100	100
4	D	194/212 (92%)	182 (94%)	10 (5%)	2 (1%)	19	28
5	E	239/246 (97%)	228 (95%)	10 (4%)	1 (0%)	39	56
All	All	798/844 (94%)	765 (96%)	30 (4%)	3 (0%)	39	56

All (3) Ramachandran outliers are listed below:

Mol	Chain	Res	Type
4	D	194	ASN
4	D	123	PRO

Continued on next page...

Continued from previous page...

Mol	Chain	Res	Type
5	E	100	PRO

5.3.2 Protein sidechains ⓘ

In the following table, the Percentiles column shows the percent sidechain outliers of the chain as a percentile score with respect to all X-ray entries followed by that with respect to entries of similar resolution.

The Analysed column shows the number of residues for which the sidechain conformation was analysed, and the total number of residues.

Mol	Chain	Analysed	Rotameric	Outliers	Percentiles	
1	A	165/166 (99%)	160 (97%)	5 (3%)	48	70
2	B	162/173 (94%)	156 (96%)	6 (4%)	41	62
3	C	12/12 (100%)	11 (92%)	1 (8%)	14	21
4	D	173/190 (91%)	167 (96%)	6 (4%)	43	64
5	E	215/219 (98%)	206 (96%)	9 (4%)	36	56
All	All	727/760 (96%)	700 (96%)	27 (4%)	41	62

All (27) residues with a non-rotameric sidechain are listed below:

Mol	Chain	Res	Type
1	A	36	MET
1	A	39	LYS
1	A	46	GLU
1	A	57	GLN
1	A	160	VAL
2	B	4	ARG
2	B	29	ARG
2	B	98	GLU
2	B	114	LEU
2	B	115	LEU
2	B	160	MET
3	C	316	LEU
4	D	20	LEU
4	D	45	LEU
4	D	111	ARG
4	D	191	ASN
4	D	198	ILE
4	D	201	ASP

Continued on next page...

Continued from previous page...

Mol	Chain	Res	Type
5	E	5	THR
5	E	8	SER
5	E	33	PHE
5	E	68	SER
5	E	73	GLU
5	E	99	LEU
5	E	113	ARG
5	E	187	ASN
5	E	245	ARG

Some sidechains can be flipped to improve hydrogen bonding and reduce clashes. All (20) such sidechains are listed below:

Mol	Chain	Res	Type
1	A	15	ASN
1	A	57	GLN
1	A	94	ASN
1	A	143	HIS
1	A	149	HIS
2	B	113	ASN
2	B	150	ASN
2	B	156	GLN
4	D	1	GLN
4	D	44	GLN
4	D	60	ASN
4	D	81	HIS
4	D	127	GLN
4	D	147	GLN
4	D	176	ASN
4	D	191	ASN
5	E	6	GLN
5	E	140	HIS
5	E	157	HIS
5	E	216	GLN

5.3.3 RNA ⓘ

There are no RNA molecules in this entry.

5.4 Non-standard residues in protein, DNA, RNA chains ⓘ

There are no non-standard protein/DNA/RNA residues in this entry.

5.5 Carbohydrates ⓘ

2 carbohydrates are modelled in this entry.

In the following table, the Counts columns list the number of bonds (or angles) for which Mogul statistics could be retrieved, the number of bonds (or angles) that are observed in the model and the number of bonds (or angles) that are defined in the chemical component dictionary. The Link column lists molecule types, if any, to which the group is linked. The Z score for a bond length (or angle) is the number of standard deviations the observed value is removed from the expected value. A bond length (or angle) with $|Z| > 2$ is considered an outlier worth inspection. RMSZ is the root-mean-square of all Z scores of the bond lengths (or angles).

Mol	Type	Chain	Res	Link	Bond lengths			Bond angles		
					Counts	RMSZ	$\# Z > 2$	Counts	RMSZ	$\# Z > 2$
7	NAG	A	511	1,7	14,14,15	0.64	0	15,19,21	0.95	1 (6%)
7	NDG	A	512	7	14,14,15	0.62	0	15,19,21	0.59	0

In the following table, the Chirals column lists the number of chiral outliers, the number of chiral centers analysed, the number of these observed in the model and the number defined in the chemical component dictionary. Similar counts are reported in the Torsion and Rings columns. '-' means no outliers of that kind were identified.

Mol	Type	Chain	Res	Link	Chirals	Torsions	Rings
7	NAG	A	511	1,7	-	0/6/23/26	0/1/1/1
7	NDG	A	512	7	-	0/6/23/26	0/1/1/1

There are no bond length outliers.

All (1) bond angle outliers are listed below:

Mol	Chain	Res	Type	Atoms	Z	Observed(°)	Ideal(°)
7	A	511	NAG	C2-N2-C7	-2.47	119.87	123.04

There are no chirality outliers.

There are no torsion outliers.

There are no ring outliers.

2 monomers are involved in 3 short contacts:

Mol	Chain	Res	Type	Clashes	Symm-Clashes
7	A	511	NAG	3	0
7	A	512	NDG	1	0

5.6 Ligand geometry

2 ligands are modelled in this entry.

In the following table, the Counts columns list the number of bonds (or angles) for which Mogul statistics could be retrieved, the number of bonds (or angles) that are observed in the model and the number of bonds (or angles) that are defined in the chemical component dictionary. The Link column lists molecule types, if any, to which the group is linked. The Z score for a bond length (or angle) is the number of standard deviations the observed value is removed from the expected value. A bond length (or angle) with $|Z| > 2$ is considered an outlier worth inspection. RMSZ is the root-mean-square of all Z scores of the bond lengths (or angles).

Mol	Type	Chain	Res	Link	Bond lengths			Bond angles		
					Counts	RMSZ	$\# Z > 2$	Counts	RMSZ	$\# Z > 2$
6	NAG	A	501	1	14,14,15	0.59	0	15,19,21	0.71	1 (6%)
8	NDG	B	521	2	14,14,15	0.67	0	15,19,21	0.76	1 (6%)

In the following table, the Chirals column lists the number of chiral outliers, the number of chiral centers analysed, the number of these observed in the model and the number defined in the chemical component dictionary. Similar counts are reported in the Torsion and Rings columns. '-' means no outliers of that kind were identified.

Mol	Type	Chain	Res	Link	Chirals	Torsions	Rings
6	NAG	A	501	1	-	0/6/23/26	0/1/1/1
8	NDG	B	521	2	-	0/6/23/26	0/1/1/1

There are no bond length outliers.

All (2) bond angle outliers are listed below:

Mol	Chain	Res	Type	Atoms	Z	Observed(°)	Ideal(°)
8	B	521	NDG	C2-N2-C7	-2.40	119.96	123.04
6	A	501	NAG	C2-N2-C7	-2.02	120.44	123.04

There are no chirality outliers.

There are no torsion outliers.

There are no ring outliers.

1 monomer is involved in 1 short contact:

Mol	Chain	Res	Type	Clashes	Symm-Clashes
8	B	521	NDG	1	0

5.7 Other polymers [i](#)

There are no such residues in this entry.

5.8 Polymer linkage issues [i](#)

There are no chain breaks in this entry.

6 Fit of model and data ⓘ

6.1 Protein, DNA and RNA chains ⓘ

In the following table, the column labelled ‘#RSRZ> 2’ contains the number (and percentage) of RSRZ outliers, followed by percent RSRZ outliers for the chain as percentile scores relative to all X-ray entries and entries of similar resolution. The OWAB column contains the minimum, median, 95th percentile and maximum values of the occupancy-weighted average B-factor per residue. The column labelled ‘Q< 0.9’ lists the number of (and percentage) of residues with an average occupancy less than 0.9.

Mol	Chain	Analysed	<RSRZ>	#RSRZ>2			OWAB(Å ²)	Q<0.9
1	A	180/181 (99%)	-0.02	6 (3%)	50	50	27, 39, 60, 90	0
2	B	180/192 (93%)	-0.01	6 (3%)	50	50	29, 42, 71, 89	0
3	C	13/13 (100%)	-0.05	0	100	100	29, 33, 48, 54	0
4	D	198/212 (93%)	0.42	18 (9%)	11	11	28, 51, 84, 93	0
5	E	241/246 (97%)	0.03	9 (3%)	45	46	27, 41, 63, 75	0
All	All	812/844 (96%)	0.10	39 (4%)	34	35	27, 42, 73, 93	0

All (39) RSRZ outliers are listed below:

Mol	Chain	Res	Type	RSRZ
1	A	2	LYS	6.8
4	D	135	ASP	6.3
4	D	133	SER	5.2
5	E	2	VAL	4.7
4	D	134	SER	4.4
2	B	168	GLY	4.0
2	B	166	ARG	3.8
4	D	186	ASP	3.7
1	A	3	GLU	3.7
2	B	167	SER	3.5
4	D	199	PRO	3.4
5	E	34	TRP	3.2
5	E	187	ASN	3.0
4	D	185	SER	3.0
5	E	7	SER	2.9
4	D	119	GLN	2.8
4	D	170	SER	2.8
5	E	223	ASN	2.7
1	A	51	PHE	2.5
4	D	129	ARG	2.5

Continued on next page...

Continued from previous page...

Mol	Chain	Res	Type	RSRZ
2	B	136	GLN	2.4
4	D	75	LEU	2.4
5	E	229	ASP	2.3
1	A	171	ASP	2.3
1	A	100	ARG	2.2
5	E	185	ALA	2.2
4	D	203	PHE	2.2
5	E	92	CYS	2.2
2	B	164	VAL	2.2
2	B	165	PRO	2.1
4	D	187	PHE	2.1
1	A	158	GLU	2.1
5	E	32	MET	2.1
4	D	171	MET	2.1
4	D	90	CYS	2.1
4	D	40	ASN	2.0
4	D	154	LYS	2.0
4	D	184	LYS	2.0
4	D	146	SER	2.0

6.2 Non-standard residues in protein, DNA, RNA chains [i](#)

There are no non-standard protein/DNA/RNA residues in this entry.

6.3 Carbohydrates [i](#)

In the following table, the Atoms column lists the number of modelled atoms in the group and the number defined in the chemical component dictionary. LLDF column lists the quality of electron density of the group with respect to its neighbouring residues in protein, DNA or RNA chains. The B-factors column lists the minimum, median, 95th percentile and maximum values of B factors of atoms in the group. The column labelled 'Q< 0.9' lists the number of atoms with occupancy less than 0.9.

Mol	Type	Chain	Res	Atoms	RSCC	RSR	LLDF	B-factors(\AA^2)	Q<0.9
7	NAG	A	511	14/15	0.81	0.25	4.49	66,71,78,85	0
7	NDG	A	512	14/15	0.81	0.62	-	91,94,97,98	0

6.4 Ligands [i](#)

In the following table, the Atoms column lists the number of modelled atoms in the group and the number defined in the chemical component dictionary. LLDF column lists the quality of electron

density of the group with respect to its neighbouring residues in protein, DNA or RNA chains. The B-factors column lists the minimum, median, 95th percentile and maximum values of B factors of atoms in the group. The column labelled 'Q< 0.9' lists the number of atoms with occupancy less than 0.9.

Mol	Type	Chain	Res	Atoms	RSCC	RSR	LLDF	B-factors(Å ²)	Q<0.9
6	NAG	A	501	14/15	0.78	0.52	-	75,80,83,85	0
8	NDG	B	521	14/15	0.71	0.41	-	82,84,86,86	0

6.5 Other polymers

There are no such residues in this entry.