



wwPDB X-ray Structure Validation Summary Report ⓘ

Feb 1, 2016 – 02:55 AM GMT

PDB ID : 2JBF
Title : STRUCTURE OF PBP-A, L158E MUTANT. ACYL-ENZYME COMPLEX WITH PENICILLIN-G.
Authors : Evrard, C.; Declercq, J.-P.
Deposited on : 2006-12-06
Resolution : 1.70 Å(reported)

This is a wwPDB X-ray Structure Validation Summary Report for a publicly released PDB entry.
We welcome your comments at validation@mail.wwpdb.org
A user guide is available at
<http://wwpdb.org/validation/2016/XrayValidationReportHelp>
with specific help available everywhere you see the ⓘ symbol.

The following versions of software and data (see [references ⓘ](#)) were used in the production of this report:

MolProbity : 4.02b-467
Mogul : 1.7 (RC4), CSD as536be (2015)
Xtriage (Phenix) : 1.9-1692
EDS : rb-20026688
Percentile statistics : 20151230.v01 (using entries in the PDB archive December 30th 2015)
Refmac : 5.8.0135
CCP4 : 6.5.0
Ideal geometry (proteins) : Engh & Huber (2001)
Ideal geometry (DNA, RNA) : Parkinson et al. (1996)
Validation Pipeline (wwPDB-VP) : trunk26865

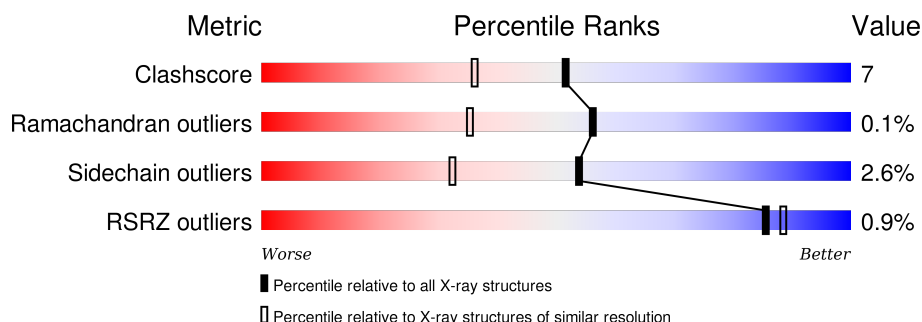
1 Overall quality at a glance

The following experimental techniques were used to determine the structure:

X-RAY DIFFRACTION

The reported resolution of this entry is 1.70 Å.

Percentile scores (ranging between 0-100) for global validation metrics of the entry are shown in the following graphic. The table shows the number of entries on which the scores are based.



Metric	Whole archive (#Entries)	Similar resolution (#Entries, resolution range(Å))
Clashscore	102246	3585 (1.70-1.70)
Ramachandran outliers	100387	3527 (1.70-1.70)
Sidechain outliers	100360	3527 (1.70-1.70)
RSRZ outliers	91569	3200 (1.70-1.70)

The table below summarises the geometric issues observed across the polymeric chains and their fit to the electron density. The red, orange, yellow and green segments on the lower bar indicate the fraction of residues that contain outliers for ≥ 3 , 2, 1 and 0 types of geometric quality criteria. A grey segment represents the fraction of residues that are not modelled. The numeric value for each fraction is indicated below the corresponding segment, with a dot representing fractions $\leq 5\%$. The upper red bar (where present) indicates the fraction of residues that have poor fit to the electron density. The numeric value is given above the bar.

Mol	Chain	Length	Quality of chain
1	A	298	<div> <div>%</div> <div> <div>77%</div> <div>11%</div> <div>•</div> <div>11%</div> </div> </div>
1	B	298	<div> <div>83%</div> <div>5%</div> <div>•</div> <div>11%</div> </div>
1	C	298	<div> <div>%</div> <div> <div>78%</div> <div>10%</div> <div>11%</div> </div> </div>
1	D	298	<div> <div>%</div> <div> <div>80%</div> <div>11%</div> <div>•</div> <div>8%</div> </div> </div>

The following table lists non-polymeric compounds, carbohydrate monomers and non-standard residues in protein, DNA, RNA chains that are outliers for geometric or electron-density-fit criteria:

Mol	Type	Chain	Res	Chirality	Geometry	Clashes	Electron density
2	PNM	A	300	-	-	-	X
2	PNM	B	300	-	-	-	X
2	PNM	C	300	-	-	X	X
2	PNM	D	300	-	-	X	X

2 Entry composition

There are 4 unique types of molecules in this entry. The entry contains 9215 atoms, of which 0 are hydrogens and 0 are deuteriums.

In the tables below, the ZeroOcc column contains the number of atoms modelled with zero occupancy, the AltConf column contains the number of residues with at least one atom in alternate conformation and the Trace column contains the number of residues modelled with at most 2 atoms.

- Molecule 1 is a protein called TLL2115 PROTEIN.

Mol	Chain	Residues	Atoms					ZeroOcc	AltConf	Trace
1	A	264	Total	C	N	O	S	0	0	0
			2035	1277	360	387	11			
1	B	265	Total	C	N	O	S	0	0	0
			2042	1281	361	389	11			
1	C	264	Total	C	N	O	S	0	0	0
			2035	1277	360	387	11			
1	D	274	Total	C	N	O	S	0	0	0
			2101	1317	370	403	11			

There are 92 discrepancies between the modelled and reference sequences:

Chain	Residue	Modelled	Actual	Comment	Reference
A	1	MET	-	EXPRESSION TAG	UNP Q8DH45
A	278	GLU	-	EXPRESSION TAG	UNP Q8DH45
A	279	GLN	-	EXPRESSION TAG	UNP Q8DH45
A	280	LYS	-	EXPRESSION TAG	UNP Q8DH45
A	281	LEU	-	EXPRESSION TAG	UNP Q8DH45
A	282	ILE	-	EXPRESSION TAG	UNP Q8DH45
A	283	SER	-	EXPRESSION TAG	UNP Q8DH45
A	284	GLU	-	EXPRESSION TAG	UNP Q8DH45
A	285	GLU	-	EXPRESSION TAG	UNP Q8DH45
A	286	ASP	-	EXPRESSION TAG	UNP Q8DH45
A	287	LEU	-	EXPRESSION TAG	UNP Q8DH45
A	288	ASN	-	EXPRESSION TAG	UNP Q8DH45
A	289	SER	-	EXPRESSION TAG	UNP Q8DH45
A	290	ALA	-	EXPRESSION TAG	UNP Q8DH45
A	291	VAL	-	EXPRESSION TAG	UNP Q8DH45
A	292	ASP	-	EXPRESSION TAG	UNP Q8DH45
A	293	HIS	-	EXPRESSION TAG	UNP Q8DH45
A	294	HIS	-	EXPRESSION TAG	UNP Q8DH45
A	295	HIS	-	EXPRESSION TAG	UNP Q8DH45
A	296	HIS	-	EXPRESSION TAG	UNP Q8DH45
A	297	HIS	-	EXPRESSION TAG	UNP Q8DH45

Continued on next page...

Continued from previous page...

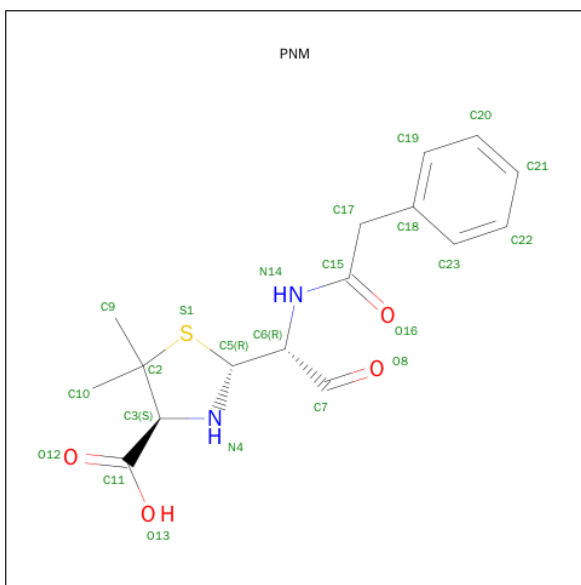
Chain	Residue	Modelled	Actual	Comment	Reference
A	298	HIS	-	EXPRESSION TAG	UNP Q8DH45
A	158	GLU	LEU	ENGINEERED MUTATION	UNP Q8DH45
B	1	MET	-	EXPRESSION TAG	UNP Q8DH45
B	278	GLU	-	EXPRESSION TAG	UNP Q8DH45
B	279	GLN	-	EXPRESSION TAG	UNP Q8DH45
B	280	LYS	-	EXPRESSION TAG	UNP Q8DH45
B	281	LEU	-	EXPRESSION TAG	UNP Q8DH45
B	282	ILE	-	EXPRESSION TAG	UNP Q8DH45
B	283	SER	-	EXPRESSION TAG	UNP Q8DH45
B	284	GLU	-	EXPRESSION TAG	UNP Q8DH45
B	285	GLU	-	EXPRESSION TAG	UNP Q8DH45
B	286	ASP	-	EXPRESSION TAG	UNP Q8DH45
B	287	LEU	-	EXPRESSION TAG	UNP Q8DH45
B	288	ASN	-	EXPRESSION TAG	UNP Q8DH45
B	289	SER	-	EXPRESSION TAG	UNP Q8DH45
B	290	ALA	-	EXPRESSION TAG	UNP Q8DH45
B	291	VAL	-	EXPRESSION TAG	UNP Q8DH45
B	292	ASP	-	EXPRESSION TAG	UNP Q8DH45
B	293	HIS	-	EXPRESSION TAG	UNP Q8DH45
B	294	HIS	-	EXPRESSION TAG	UNP Q8DH45
B	295	HIS	-	EXPRESSION TAG	UNP Q8DH45
B	296	HIS	-	EXPRESSION TAG	UNP Q8DH45
B	297	HIS	-	EXPRESSION TAG	UNP Q8DH45
B	298	HIS	-	EXPRESSION TAG	UNP Q8DH45
B	158	GLU	LEU	ENGINEERED MUTATION	UNP Q8DH45
C	1	MET	-	EXPRESSION TAG	UNP Q8DH45
C	278	GLU	-	EXPRESSION TAG	UNP Q8DH45
C	279	GLN	-	EXPRESSION TAG	UNP Q8DH45
C	280	LYS	-	EXPRESSION TAG	UNP Q8DH45
C	281	LEU	-	EXPRESSION TAG	UNP Q8DH45
C	282	ILE	-	EXPRESSION TAG	UNP Q8DH45
C	283	SER	-	EXPRESSION TAG	UNP Q8DH45
C	284	GLU	-	EXPRESSION TAG	UNP Q8DH45
C	285	GLU	-	EXPRESSION TAG	UNP Q8DH45
C	286	ASP	-	EXPRESSION TAG	UNP Q8DH45
C	287	LEU	-	EXPRESSION TAG	UNP Q8DH45
C	288	ASN	-	EXPRESSION TAG	UNP Q8DH45
C	289	SER	-	EXPRESSION TAG	UNP Q8DH45
C	290	ALA	-	EXPRESSION TAG	UNP Q8DH45
C	291	VAL	-	EXPRESSION TAG	UNP Q8DH45
C	292	ASP	-	EXPRESSION TAG	UNP Q8DH45
C	293	HIS	-	EXPRESSION TAG	UNP Q8DH45

Continued on next page...

Continued from previous page...

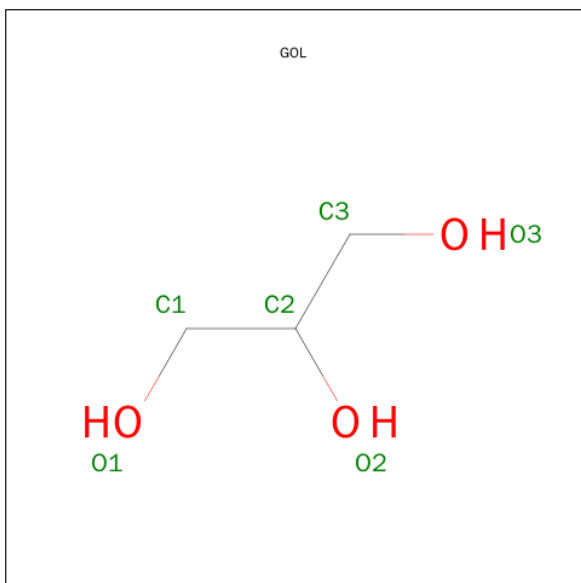
Chain	Residue	Modelled	Actual	Comment	Reference
C	294	HIS	-	EXPRESSION TAG	UNP Q8DH45
C	295	HIS	-	EXPRESSION TAG	UNP Q8DH45
C	296	HIS	-	EXPRESSION TAG	UNP Q8DH45
C	297	HIS	-	EXPRESSION TAG	UNP Q8DH45
C	298	HIS	-	EXPRESSION TAG	UNP Q8DH45
C	158	GLU	LEU	ENGINEERED MUTATION	UNP Q8DH45
D	1	MET	-	EXPRESSION TAG	UNP Q8DH45
D	278	GLU	-	EXPRESSION TAG	UNP Q8DH45
D	279	GLN	-	EXPRESSION TAG	UNP Q8DH45
D	280	LYS	-	EXPRESSION TAG	UNP Q8DH45
D	281	LEU	-	EXPRESSION TAG	UNP Q8DH45
D	282	ILE	-	EXPRESSION TAG	UNP Q8DH45
D	283	SER	-	EXPRESSION TAG	UNP Q8DH45
D	284	GLU	-	EXPRESSION TAG	UNP Q8DH45
D	285	GLU	-	EXPRESSION TAG	UNP Q8DH45
D	286	ASP	-	EXPRESSION TAG	UNP Q8DH45
D	287	LEU	-	EXPRESSION TAG	UNP Q8DH45
D	288	ASN	-	EXPRESSION TAG	UNP Q8DH45
D	289	SER	-	EXPRESSION TAG	UNP Q8DH45
D	290	ALA	-	EXPRESSION TAG	UNP Q8DH45
D	291	VAL	-	EXPRESSION TAG	UNP Q8DH45
D	292	ASP	-	EXPRESSION TAG	UNP Q8DH45
D	293	HIS	-	EXPRESSION TAG	UNP Q8DH45
D	294	HIS	-	EXPRESSION TAG	UNP Q8DH45
D	295	HIS	-	EXPRESSION TAG	UNP Q8DH45
D	296	HIS	-	EXPRESSION TAG	UNP Q8DH45
D	297	HIS	-	EXPRESSION TAG	UNP Q8DH45
D	298	HIS	-	EXPRESSION TAG	UNP Q8DH45
D	158	GLU	LEU	ENGINEERED MUTATION	UNP Q8DH45

- Molecule 2 is OPEN FORM - PENICILLIN G (three-letter code: PNM) (formula: C₁₆H₂₀N₂O₄S).



Mol	Chain	Residues	Atoms					ZeroOcc	AltConf
2	A	1	Total 23	C 16	N 2	O 4	S 1	0	0
2	B	1	Total 23	C 16	N 2	O 4	S 1	0	0
2	C	1	Total 23	C 16	N 2	O 4	S 1	0	0
2	D	1	Total 23	C 16	N 2	O 4	S 1	0	0

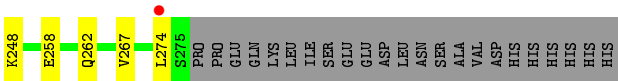
- Molecule 3 is GLYCEROL (three-letter code: GOL) (formula: $\text{C}_3\text{H}_8\text{O}_3$).



Mol	Chain	Residues	Atoms			ZeroOcc	AltConf
3	A	1	Total	C	O	0	0
			6	3	3		

- Molecule 4 is water.

Mol	Chain	Residues	Atoms		ZeroOcc	AltConf
4	A	189	Total	O	0	0
			189	189		
4	B	226	Total	O	0	0
			226	226		
4	C	275	Total	O	0	0
			275	275		
4	D	214	Total	O	0	0
			214	214		



4 Data and refinement statistics

Property	Value	Source
Space group	P 21 21 21	Depositor
Cell constants a, b, c, α , β , γ	86.58Å 91.53Å 145.71Å 90.00° 90.00° 90.00°	Depositor
Resolution (Å)	77.61 – 1.70 74.43 – 1.70	Depositor EDS
% Data completeness (in resolution range)	99.3 (77.61-1.70) 99.3 (74.43-1.70)	Depositor EDS
R_{merge}	0.04	Depositor
R_{sym}	(Not available)	Depositor
$\langle I/\sigma(I) \rangle$ ¹	2.36 (at 1.70Å)	Xtriage
Refinement program	REFMAC 5.2.0019	Depositor
R, R_{free}	0.178 , 0.218 0.186 , (Not available)	Depositor DCC
R_{free} test set	No test flags present.	DCC
Wilson B-factor (Å ²)	22.1	Xtriage
Anisotropy	0.079	Xtriage
Bulk solvent k_{sol} (e/Å ³), B_{sol} (Å ²)	0.35 , 47.7	EDS
Estimated twinning fraction	No twinning to report.	Xtriage
L-test for twinning ²	$\langle L \rangle = 0.46$, $\langle L^2 \rangle = 0.29$	Xtriage
Outliers	0 of 126686 reflections	Xtriage
F_o, F_c correlation	0.96	EDS
Total number of atoms	9215	wwPDB-VP
Average B, all atoms (Å ²)	30.0	wwPDB-VP

Xtriage's analysis on translational NCS is as follows: *The largest off-origin peak in the Patterson function is 11.73% of the height of the origin peak. No significant pseudotranslation is detected.*

¹Intensities estimated from amplitudes.

²Theoretical values of $\langle |L| \rangle$, $\langle L^2 \rangle$ for acentric reflections are 0.5, 0.375 respectively for untwinned datasets, and 0.333, 0.2 for perfectly twinned datasets.

5 Model quality [i](#)

5.1 Standard geometry [i](#)

Bond lengths and bond angles in the following residue types are not validated in this section: GOL, PNM

The Z score for a bond length (or angle) is the number of standard deviations the observed value is removed from the expected value. A bond length (or angle) with $|Z| > 5$ is considered an outlier worth inspection. RMSZ is the root-mean-square of all Z scores of the bond lengths (or angles).

Mol	Chain	Bond lengths		Bond angles	
		RMSZ	$\# Z > 5$	RMSZ	$\# Z > 5$
1	A	0.65	0/2068	0.74	2/2805 (0.1%)
1	B	0.72	0/2075	0.81	3/2815 (0.1%)
1	C	0.76	0/2068	0.82	2/2805 (0.1%)
1	D	0.66	0/2137	0.77	3/2902 (0.1%)
All	All	0.70	0/8348	0.79	10/11327 (0.1%)

There are no bond length outliers.

The worst 5 of 10 bond angle outliers are listed below:

Mol	Chain	Res	Type	Atoms	Z	Observed($^{\circ}$)	Ideal($^{\circ}$)
1	D	79	ARG	NE-CZ-NH1	8.49	124.54	120.30
1	B	199	ARG	NE-CZ-NH1	7.88	124.24	120.30
1	B	199	ARG	NE-CZ-NH2	-7.38	116.61	120.30
1	D	79	ARG	NE-CZ-NH2	-7.25	116.67	120.30
1	A	79	ARG	NE-CZ-NH2	-6.36	117.12	120.30

There are no chirality outliers.

There are no planarity outliers.

5.2 Too-close contacts [i](#)

In the following table, the Non-H and H(model) columns list the number of non-hydrogen atoms and hydrogen atoms in the chain respectively. The H(added) column lists the number of hydrogen atoms added and optimized by MolProbity. The Clashes column lists the number of clashes within the asymmetric unit, whereas Symm-Clashes lists symmetry related clashes.

Mol	Chain	Non-H	H(model)	H(added)	Clashes	Symm-Clashes
1	A	2035	0	2065	25	0
1	B	2042	0	2072	15	0

Continued on next page...

Continued from previous page...

Mol	Chain	Non-H	H(model)	H(added)	Clashes	Symm-Clashes
1	C	2035	0	2065	37	0
1	D	2101	0	2127	32	0
2	A	23	0	18	5	0
2	B	23	0	18	2	0
2	C	23	0	18	13	0
2	D	23	0	18	9	0
3	A	6	0	8	0	0
4	A	189	0	0	4	0
4	B	226	0	0	6	0
4	C	275	0	0	8	0
4	D	214	0	0	7	0
All	All	9215	0	8409	113	0

The all-atom clashscore is defined as the number of clashes found per 1000 atoms (including hydrogen atoms). The all-atom clashscore for this structure is 7.

The worst 5 of 113 close contacts within the same asymmetric unit are listed below, sorted by their clash magnitude.

Atom-1	Atom-2	Interatomic distance (Å)	Clash overlap (Å)
1:D:161:MET:SD	2:D:300:PNM:H171	2.14	0.87
1:D:161:MET:SD	2:D:300:PNM:C17	2.64	0.85
1:C:225:ILE:HG13	1:C:226:VAL:HG23	1.58	0.85
1:D:35:THR:HG22	1:D:248:LYS:HB2	1.60	0.83
1:C:161:MET:SD	2:C:300:PNM:H171	2.19	0.81

There are no symmetry-related clashes.

5.3 Torsion angles [i](#)

5.3.1 Protein backbone [i](#)

In the following table, the Percentiles column shows the percent Ramachandran outliers of the chain as a percentile score with respect to all X-ray entries followed by that with respect to entries of similar resolution.

The Analysed column shows the number of residues for which the backbone conformation was analysed, and the total number of residues.

Mol	Chain	Analysed	Favoured	Allowed	Outliers	Percentiles
1	A	262/298 (88%)	254 (97%)	7 (3%)	1 (0%)	39 20

Continued on next page...

Continued from previous page...

Mol	Chain	Analysed	Favoured	Allowed	Outliers	Percentiles	
1	B	263/298 (88%)	257 (98%)	6 (2%)	0	100	100
1	C	262/298 (88%)	254 (97%)	8 (3%)	0	100	100
1	D	272/298 (91%)	266 (98%)	6 (2%)	0	100	100
All	All	1059/1192 (89%)	1031 (97%)	27 (2%)	1 (0%)	56	35

All (1) Ramachandran outliers are listed below:

Mol	Chain	Res	Type
1	A	32	PRO

5.3.2 Protein sidechains ⓘ

In the following table, the Percentiles column shows the percent sidechain outliers of the chain as a percentile score with respect to all X-ray entries followed by that with respect to entries of similar resolution.

The Analysed column shows the number of residues for which the sidechain conformation was analysed, and the total number of residues.

Mol	Chain	Analysed	Rotameric	Outliers	Percentiles	
1	A	221/252 (88%)	215 (97%)	6 (3%)	52	31
1	B	222/252 (88%)	217 (98%)	5 (2%)	58	37
1	C	221/252 (88%)	217 (98%)	4 (2%)	66	49
1	D	229/252 (91%)	221 (96%)	8 (4%)	43	20
All	All	893/1008 (89%)	870 (97%)	23 (3%)	54	32

5 of 23 residues with a non-rotameric sidechain are listed below:

Mol	Chain	Res	Type
1	B	200	THR
1	C	85	ARG
1	D	170	ARG
1	C	15	ARG
1	C	122	SER

Some sidechains can be flipped to improve hydrogen bonding and reduce clashes. 5 of 8 such sidechains are listed below:

Mol	Chain	Res	Type
1	B	269	GLN
1	D	262	GLN
1	C	218	HIS
1	B	181	GLN
1	C	25	GLN

5.3.3 RNA [i](#)

There are no RNA molecules in this entry.

5.4 Non-standard residues in protein, DNA, RNA chains [i](#)

There are no non-standard protein/DNA/RNA residues in this entry.

5.5 Carbohydrates [i](#)

There are no carbohydrates in this entry.

5.6 Ligand geometry [i](#)

5 ligands are modelled in this entry.

In the following table, the Counts columns list the number of bonds (or angles) for which Mogul statistics could be retrieved, the number of bonds (or angles) that are observed in the model and the number of bonds (or angles) that are defined in the chemical component dictionary. The Link column lists molecule types, if any, to which the group is linked. The Z score for a bond length (or angle) is the number of standard deviations the observed value is removed from the expected value. A bond length (or angle) with $|Z| > 2$ is considered an outlier worth inspection. RMSZ is the root-mean-square of all Z scores of the bond lengths (or angles).

Mol	Type	Chain	Res	Link	Bond lengths			Bond angles		
					Counts	RMSZ	$\# Z > 2$	Counts	RMSZ	$\# Z > 2$
3	GOL	A	2647	-	5,5,5	0.40	0	5,5,5	0.50	0
2	PNM	A	300	1	17,24,24	1.10	1 (5%)	21,34,34	1.24	1 (4%)
2	PNM	B	300	1	17,24,24	1.22	2 (11%)	21,34,34	1.23	1 (4%)
2	PNM	C	300	1	17,24,24	1.43	2 (11%)	21,34,34	0.91	1 (4%)
2	PNM	D	300	1	17,24,24	1.30	2 (11%)	21,34,34	1.79	6 (28%)

In the following table, the Chirals column lists the number of chiral outliers, the number of chiral centers analysed, the number of these observed in the model and the number defined in the chemical component dictionary. Similar counts are reported in the Torsion and Rings columns. '-' means

no outliers of that kind were identified.

Mol	Type	Chain	Res	Link	Chirals	Torsions	Rings
3	GOL	A	2647	-	-	0/4/4/4	0/0/0/0
2	PNM	A	300	1	-	0/8/33/33	0/2/2/2
2	PNM	B	300	1	-	0/8/33/33	0/2/2/2
2	PNM	C	300	1	-	0/8/33/33	0/2/2/2
2	PNM	D	300	1	-	0/8/33/33	0/2/2/2

The worst 5 of 7 bond length outliers are listed below:

Mol	Chain	Res	Type	Atoms	Z	Observed(Å)	Ideal(Å)
2	B	300	PNM	C2-S1	-2.01	1.81	1.85
2	C	300	PNM	C17-C15	2.06	1.57	1.51
2	D	300	PNM	C17-C15	2.58	1.58	1.51
2	A	300	PNM	C17-C18	2.66	1.56	1.51
2	B	300	PNM	C17-C18	2.83	1.56	1.51

The worst 5 of 9 bond angle outliers are listed below:

Mol	Chain	Res	Type	Atoms	Z	Observed(°)	Ideal(°)
2	A	300	PNM	C3-C2-S1	-3.69	97.54	103.96
2	B	300	PNM	C3-C2-S1	-3.52	97.83	103.96
2	D	300	PNM	C3-C2-S1	-2.98	98.78	103.96
2	D	300	PNM	O8-C7-C6	-2.77	117.23	125.74
2	D	300	PNM	C17-C18-C19	-2.62	116.93	120.86

There are no chirality outliers.

There are no torsion outliers.

There are no ring outliers.

4 monomers are involved in 29 short contacts:

Mol	Chain	Res	Type	Clashes	Symm-Clashes
2	A	300	PNM	5	0
2	B	300	PNM	2	0
2	C	300	PNM	13	0
2	D	300	PNM	9	0

5.7 Other polymers ⓘ

There are no such residues in this entry.

5.8 Polymer linkage issues ⓘ

There are no chain breaks in this entry.

6 Fit of model and data [i](#)

6.1 Protein, DNA and RNA chains [i](#)

In the following table, the column labelled ‘#RSRZ> 2’ contains the number (and percentage) of RSRZ outliers, followed by percent RSRZ outliers for the chain as percentile scores relative to all X-ray entries and entries of similar resolution. The OWAB column contains the minimum, median, 95th percentile and maximum values of the occupancy-weighted average B-factor per residue. The column labelled ‘Q< 0.9’ lists the number of (and percentage) of residues with an average occupancy less than 0.9.

Mol	Chain	Analysed	<RSRZ>	#RSRZ>2	OWAB(Å ²)	Q<0.9
1	A	264/298 (88%)	-0.16	3 (1%) 82 86	16, 34, 59, 69	0
1	B	265/298 (88%)	-0.40	0 100 100	16, 26, 41, 58	0
1	C	264/298 (88%)	-0.30	4 (1%) 76 80	12, 22, 44, 54	0
1	D	274/298 (91%)	-0.26	3 (1%) 82 86	16, 28, 45, 59	0
All	All	1067/1192 (89%)	-0.28	10 (0%) 85 88	12, 27, 50, 69	0

The worst 5 of 10 RSRZ outliers are listed below:

Mol	Chain	Res	Type	RSRZ
1	C	225	ILE	4.0
1	D	2	PRO	3.7
1	C	274	LEU	3.5
1	D	274	LEU	3.5
1	C	30	ARG	3.2

6.2 Non-standard residues in protein, DNA, RNA chains [i](#)

There are no non-standard protein/DNA/RNA residues in this entry.

6.3 Carbohydrates [i](#)

There are no carbohydrates in this entry.

6.4 Ligands [i](#)

In the following table, the Atoms column lists the number of modelled atoms in the group and the number defined in the chemical component dictionary. LLDF column lists the quality of electron density of the group with respect to its neighbouring residues in protein, DNA or RNA chains. The B-factors column lists the minimum, median, 95th percentile and maximum values of B factors

of atoms in the group. The column labelled 'Q< 0.9' lists the number of atoms with occupancy less than 0.9.

Mol	Type	Chain	Res	Atoms	RSCC	RSR	LLDF	B-factors(\AA^2)	Q<0.9
2	PNM	B	300	23/23	0.68	0.32	15.55	32,53,65,66	0
2	PNM	A	300	23/23	0.71	0.44	8.63	48,62,74,76	0
2	PNM	C	300	23/23	0.62	0.40	7.96	33,58,67,68	0
2	PNM	D	300	23/23	0.69	0.41	5.47	37,55,68,69	0
3	GOL	A	2647	6/6	0.65	0.22	-	56,57,58,60	0

6.5 Other polymers [i](#)

There are no such residues in this entry.