



Full wwPDB X-ray Structure Validation Report ⓘ

Jan 31, 2016 – 08:14 PM GMT

PDB ID : 1JCN
Title : BINARY COMPLEX OF HUMAN TYPE-I INOSINE MONOPHOSPHATE
DEHYDROGENASE WITH 6-CL-IMP
Authors : Risal, D.; Strickler, M.D.; Goldstein, B.M.
Deposited on : 2001-06-11
Resolution : 2.50 Å(reported)

This is a Full wwPDB X-ray Structure Validation Report for a publicly released PDB entry.
We welcome your comments at validation@mail.wwpdb.org
A user guide is available at
<http://wwpdb.org/validation/2016/XrayValidationReportHelp>
with specific help available everywhere you see the ⓘ symbol.

The following versions of software and data (see [references ⓘ](#)) were used in the production of this report:

MolProbity : 4.02b-467
Mogul : 1.7 (RC4), CSD as536be (2015)
Xtriage (Phenix) : 1.9-1692
EDS : rb-20026688
Percentile statistics : 20151230.v01 (using entries in the PDB archive December 30th 2015)
Refmac : 5.8.0135
CCP4 : 6.5.0
Ideal geometry (proteins) : Engh & Huber (2001)
Ideal geometry (DNA, RNA) : Parkinson et al. (1996)
Validation Pipeline (wwPDB-VP) : trunk26865

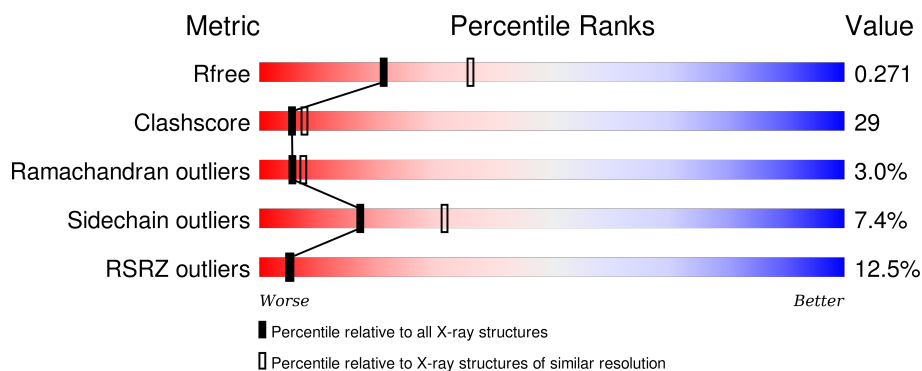
1 Overall quality at a glance

The following experimental techniques were used to determine the structure:

X-RAY DIFFRACTION

The reported resolution of this entry is 2.50 Å.

Percentile scores (ranging between 0-100) for global validation metrics of the entry are shown in the following graphic. The table shows the number of entries on which the scores are based.



Metric	Whole archive (#Entries)	Similar resolution (#Entries, resolution range(Å))
R_{free}	91344	3553 (2.50-2.50)
Clashscore	102246	4242 (2.50-2.50)
Ramachandran outliers	100387	4156 (2.50-2.50)
Sidechain outliers	100360	4158 (2.50-2.50)
RSRZ outliers	91569	3562 (2.50-2.50)

The table below summarises the geometric issues observed across the polymeric chains and their fit to the electron density. The red, orange, yellow and green segments on the lower bar indicate the fraction of residues that contain outliers for ≥ 3 , 2, 1 and 0 types of geometric quality criteria. A grey segment represents the fraction of residues that are not modelled. The numeric value for each fraction is indicated below the corresponding segment, with a dot representing fractions $\leq 5\%$. The upper red bar (where present) indicates the fraction of residues that have poor fit to the electron density. The numeric value is given above the bar.

Mol	Chain	Length	Quality of chain
1	A	514	<div> <div>9%</div> <div> <div></div> <div>46%</div> <div>26%</div> <div>5%</div> <div>23%</div> </div> </div>
1	B	514	<div> <div>10%</div> <div> <div></div> <div>47%</div> <div>24%</div> <div>6%</div> <div>23%</div> </div> </div>

2 Entry composition [i](#)

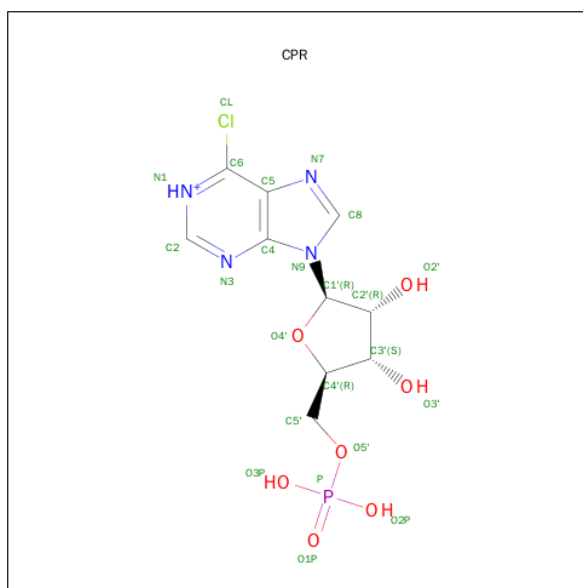
There are 3 unique types of molecules in this entry. The entry contains 6216 atoms, of which 0 are hydrogens and 0 are deuteriums.

In the tables below, the ZeroOcc column contains the number of atoms modelled with zero occupancy, the AltConf column contains the number of residues with at least one atom in alternate conformation and the Trace column contains the number of residues modelled with at most 2 atoms.

- Molecule 1 is a protein called INOSINE MONOPHOSPHATE DEHYDROGENASE I.

Mol	Chain	Residues	Atoms					ZeroOcc	AltConf	Trace
1	A	395	Total	C	N	O	S	0	0	0
			2939	1855	506	560	18			
1	B	395	Total	C	N	O	S	0	0	0
			2939	1855	506	560	18			

- Molecule 2 is 6-CHLOROPURINE RIBOSIDE, 5'-MONOPHOSPHATE (three-letter code: CPR) (formula: C₁₀H₁₃ClN₄O₇P).



Mol	Chain	Residues	Atoms					ZeroOcc	AltConf
2	A	1	Total	C	N	O	P	0	0
			22	10	4	7	1		
2	B	1	Total	C	N	O	P	0	0
			22	10	4	7	1		

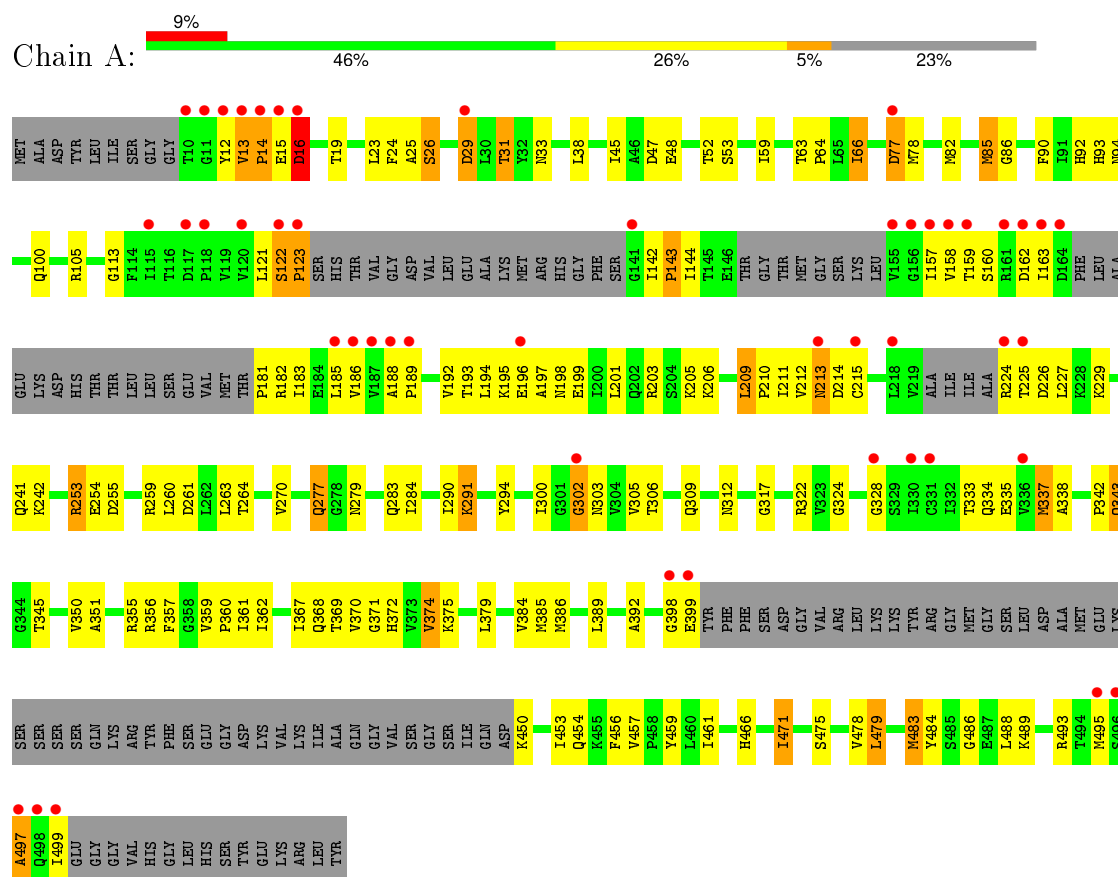
- Molecule 3 is water.

Mol	Chain	Residues	Atoms		ZeroOcc	AltConf
3	A	142	Total 142	O 142	0	0
3	B	152	Total 152	O 152	0	0

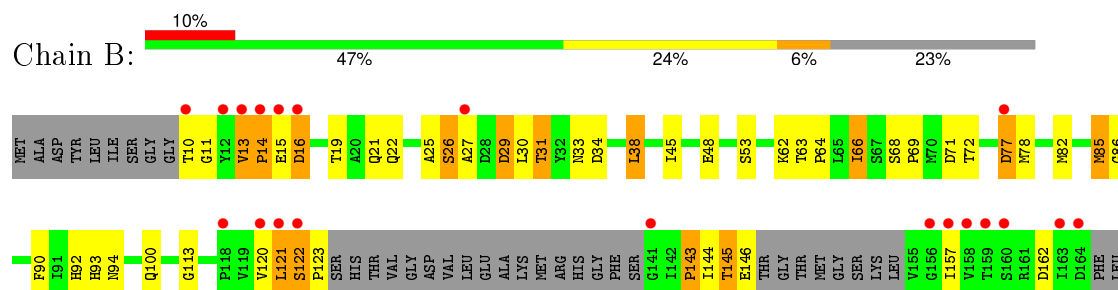
3 Residue-property plots

These plots are drawn for all protein, RNA and DNA chains in the entry. The first graphic for a chain summarises the proportions of errors displayed in the second graphic. The second graphic shows the sequence view annotated by issues in geometry and electron density. Residues are color-coded according to the number of geometric quality criteria for which they contain at least one outlier: green = 0, yellow = 1, orange = 2 and red = 3 or more. A red dot above a residue indicates a poor fit to the electron density ($\text{RSRZ} > 2$). Stretches of 2 or more consecutive residues without any outlier are shown as a green connector. Residues present in the sample, but not in the model, are shown in grey.

- Molecule 1: INOSINE MONOPHOSPHATE DEHYDROGENASE I



- Molecule 1: INOSINE MONOPHOSPHATE DEHYDROGENASE I





4 Data and refinement statistics

Property	Value	Source
Space group	I 4	Depositor
Cell constants a, b, c, α , β , γ	148.11Å 148.11Å 122.02Å 90.00° 90.00° 90.00°	Depositor
Resolution (Å)	39.74 – 2.50 39.73 – 2.50	Depositor EDS
% Data completeness (in resolution range)	97.4 (39.74-2.50) 97.5 (39.73-2.50)	Depositor EDS
R_{merge}	0.09	Depositor
R_{sym}	0.09	Depositor
$\langle I/\sigma(I) \rangle$ ¹	3.01 (at 2.51Å)	Xtriage
Refinement program	CNS 1.0	Depositor
R, R_{free}	0.238 , 0.271 0.238 , 0.271	Depositor DCC
R_{free} test set	4483 reflections (11.23%)	DCC
Wilson B-factor (Å ²)	29.2	Xtriage
Anisotropy	0.048	Xtriage
Bulk solvent k_{sol} (e/Å ³), B_{sol} (Å ²)	0.33 , 29.3	EDS
Estimated twinning fraction	0.460 for -k,-h,-l	Xtriage
L-test for twinning ²	$\langle L \rangle = 0.50$, $\langle L^2 \rangle = 0.33$	Xtriage
Outliers	0 of 44410 reflections	Xtriage
F_o, F_c correlation	0.91	EDS
Total number of atoms	6216	wwPDB-VP
Average B, all atoms (Å ²)	39.0	wwPDB-VP

Xtriage's analysis on translational NCS is as follows: *The largest off-origin peak in the Patterson function is 4.49% of the height of the origin peak. No significant pseudotranslation is detected.*

¹Intensities estimated from amplitudes.

²Theoretical values of $\langle |L| \rangle$, $\langle L^2 \rangle$ for acentric reflections are 0.5, 0.375 respectively for untwinned datasets, and 0.333, 0.2 for perfectly twinned datasets.

5 Model quality [i](#)

5.1 Standard geometry [i](#)

Bond lengths and bond angles in the following residue types are not validated in this section: CPR

The Z score for a bond length (or angle) is the number of standard deviations the observed value is removed from the expected value. A bond length (or angle) with $|Z| > 5$ is considered an outlier worth inspection. RMSZ is the root-mean-square of all Z scores of the bond lengths (or angles).

Mol	Chain	Bond lengths		Bond angles	
		RMSZ	$\# Z > 5$	RMSZ	$\# Z > 5$
1	A	0.37	0/2977	0.61	1/4023 (0.0%)
1	B	0.37	0/2977	0.62	1/4023 (0.0%)
All	All	0.37	0/5954	0.62	2/8046 (0.0%)

There are no bond length outliers.

All (2) bond angle outliers are listed below:

Mol	Chain	Res	Type	Atoms	Z	Observed(°)	Ideal(°)
1	A	143	PRO	N-CA-CB	5.42	109.80	103.30
1	B	143	PRO	N-CA-CB	5.23	109.57	103.30

There are no chirality outliers.

There are no planarity outliers.

5.2 Too-close contacts [i](#)

In the following table, the Non-H and H(model) columns list the number of non-hydrogen atoms and hydrogen atoms in the chain respectively. The H(added) column lists the number of hydrogen atoms added and optimized by MolProbity. The Clashes column lists the number of clashes within the asymmetric unit, whereas Symm-Clashes lists symmetry related clashes.

Mol	Chain	Non-H	H(model)	H(added)	Clashes	Symm-Clashes
1	A	2939	0	2967	200	0
1	B	2939	0	2967	162	0
2	A	22	0	11	2	0
2	B	22	0	11	1	0
3	A	142	0	0	11	0
3	B	152	0	0	10	0
All	All	6216	0	5956	350	0

The all-atom clashscore is defined as the number of clashes found per 1000 atoms (including hydrogen atoms). The all-atom clashscore for this structure is 29.

All (350) close contacts within the same asymmetric unit are listed below, sorted by their clash magnitude.

Atom-1	Atom-2	Interatomic distance (Å)	Clash overlap (Å)
1:A:13:VAL:HB	1:A:14:PRO:HD3	1.31	1.12
1:B:13:VAL:HB	1:B:14:PRO:HD3	1.24	1.09
1:A:192:VAL:HG13	1:A:224:ARG:HH22	1.20	1.03
1:B:471:ILE:HD11	1:B:479:LEU:HG	1.44	0.99
1:A:29:ASP:HB3	1:A:342:PRO:HG2	1.44	0.98
1:B:224:ARG:HE	1:B:224:ARG:HA	1.28	0.97
1:A:121:LEU:HG	1:A:123:PRO:HD2	1.46	0.94
1:A:351:ALA:HA	1:A:361:ILE:HD12	1.49	0.94
1:A:386:MET:HE3	1:A:389:LEU:HD23	1.48	0.92
1:A:162:ASP:HB2	1:A:183:ILE:HD11	1.50	0.91
1:B:343:GLN:HE21	1:B:343:GLN:HA	1.35	0.91
1:A:157:ILE:HB	1:A:185:LEU:HD12	1.53	0.88
1:B:475:SER:OG	1:B:478:VAL:HG23	1.75	0.87
1:B:351:ALA:HA	1:B:361:ILE:HD12	1.57	0.86
1:A:192:VAL:HG13	1:A:224:ARG:NH2	1.91	0.84
1:B:185:LEU:HD23	1:B:186:VAL:H	1.43	0.83
1:A:225:THR:HG22	1:A:226:ASP:H	1.42	0.83
1:B:13:VAL:HB	1:B:14:PRO:CD	2.10	0.81
1:A:471:ILE:HD11	1:A:479:LEU:HG	1.62	0.81
1:A:386:MET:CE	1:A:389:LEU:HD23	2.11	0.80
1:A:253:ARG:CD	1:A:255:ASP:H	1.93	0.80
1:B:100:GLN:HG2	1:B:263:LEU:HD21	1.64	0.80
1:A:211:ILE:HD11	1:A:224:ARG:HG2	1.62	0.80
1:A:475:SER:OG	1:A:478:VAL:HG23	1.83	0.78
1:A:305:VAL:H	1:A:309:GLN:NE2	1.82	0.78
1:A:122:SER:H	1:A:123:PRO:CD	1.96	0.78
1:A:121:LEU:HD13	1:A:144:ILE:HA	1.67	0.76
1:B:31:THR:HG23	1:B:33:ASN:H	1.50	0.76
1:A:14:PRO:HA	1:B:486:GLY:O	1.86	0.76
1:A:253:ARG:HD3	1:A:254:GLU:N	2.00	0.76
1:B:386:MET:HE3	1:B:389:LEU:HD23	1.66	0.76
1:A:483:MET:HE2	1:A:484:TYR:HA	1.67	0.75
1:B:122:SER:H	1:B:123:PRO:CD	1.98	0.75
1:A:277:GLN:C	1:A:277:GLN:HE21	1.90	0.75
1:A:122:SER:H	1:A:123:PRO:HD2	1.51	0.75
1:B:13:VAL:CB	1:B:14:PRO:HD3	2.12	0.75
1:A:264:THR:HG21	1:A:294:TYR:CE1	2.22	0.75

Continued on next page...

Continued from previous page...

Atom-1	Atom-2	Interatomic distance (Å)	Clash overlap (Å)
1:B:121:LEU:HD13	1:B:145:THR:H	1.50	0.74
1:B:386:MET:CE	1:B:389:LEU:HD23	2.18	0.74
1:B:333:THR:O	1:B:334:GLN:HG3	1.86	0.74
1:A:92:HIS:HD2	1:A:94:ASN:H	1.34	0.74
1:A:283:GLN:OE1	1:A:302:GLY:N	2.19	0.74
1:B:224:ARG:HA	1:B:224:ARG:NE	2.02	0.73
1:B:350:VAL:HG12	1:B:361:ILE:CD1	2.19	0.72
1:A:185:LEU:HD23	1:A:186:VAL:H	1.54	0.72
1:A:227:LEU:O	1:A:227:LEU:HD12	1.89	0.72
1:A:29:ASP:OD1	1:A:345:THR:HG21	1.90	0.72
1:B:283:GLN:OE1	1:B:302:GLY:N	2.22	0.72
1:A:25:ALA:HB2	3:A:652:HOH:O	1.88	0.72
1:B:305:VAL:H	1:B:309:GLN:NE2	1.85	0.72
1:B:211:ILE:HD11	1:B:224:ARG:HH11	1.54	0.70
1:A:29:ASP:HB3	1:A:342:PRO:CG	2.21	0.70
1:A:85:MET:HG3	1:A:457:VAL:CG1	2.22	0.70
1:A:201:LEU:HD21	1:A:209:LEU:HB2	1.73	0.70
1:B:231:ARG:HH22	1:B:454:GLN:HG2	1.56	0.70
1:B:264:THR:HG21	1:B:294:TYR:CE1	2.28	0.69
1:A:19:THR:HG21	1:B:15:GLU:HB2	1.75	0.69
1:B:78:MET:SD	1:B:82:MET:HE3	2.33	0.69
1:B:21:GLN:HG2	3:B:636:HOH:O	1.92	0.69
1:A:253:ARG:HD2	1:A:255:ASP:H	1.57	0.69
1:B:66:ILE:HD11	1:B:385:MET:HE2	1.74	0.69
1:A:334:GLN:HB2	2:A:631:CPR:HN1	1.58	0.68
1:A:261:ASP:O	1:A:264:THR:HG22	1.93	0.68
1:B:92:HIS:HD2	1:B:94:ASN:H	1.39	0.68
1:A:370:VAL:O	1:A:374:VAL:HG12	1.94	0.67
1:B:224:ARG:CA	1:B:224:ARG:HE	2.02	0.67
1:B:66:ILE:HD11	1:B:385:MET:CE	2.24	0.67
1:A:185:LEU:HD13	1:A:210:PRO:HG2	1.76	0.66
1:A:185:LEU:HD23	1:A:186:VAL:N	2.11	0.66
1:A:224:ARG:HG3	1:A:224:ARG:HH11	1.61	0.65
1:B:201:LEU:HD21	1:B:209:LEU:HB2	1.77	0.65
1:B:187:VAL:HG12	1:B:210:PRO:HB2	1.79	0.65
1:A:486:GLY:O	1:B:14:PRO:HA	1.95	0.65
1:A:15:GLU:HB2	1:B:19:THR:HG21	1.79	0.64
1:B:122:SER:H	1:B:123:PRO:HD2	1.63	0.64
1:A:350:VAL:HG12	1:A:361:ILE:CD1	2.28	0.64
1:A:483:MET:HE2	1:A:484:TYR:CA	2.27	0.63
1:B:45:ILE:HG12	1:B:48:GLU:OE1	1.99	0.63

Continued on next page...

Continued from previous page...

Atom-1	Atom-2	Interatomic distance (Å)	Clash overlap (Å)
1:B:328:GLY:HA2	2:B:631:CPR:O3P	1.99	0.63
1:A:193:THR:HG22	1:A:194:LEU:H	1.63	0.63
1:B:471:ILE:HD11	1:B:479:LEU:CG	2.25	0.63
1:A:253:ARG:HD2	1:A:255:ASP:OD1	1.98	0.63
1:A:12:TYR:CG	1:A:16:ASP:HB2	2.34	0.63
1:A:66:ILE:HD11	1:A:385:MET:CE	2.28	0.63
1:B:392:ALA:HB3	3:B:723:HOH:O	1.98	0.63
1:B:350:VAL:HG12	1:B:361:ILE:HD13	1.80	0.62
1:B:120:VAL:HG11	1:B:146:GLU:HA	1.81	0.62
1:A:45:ILE:HG12	1:A:48:GLU:OE1	1.98	0.62
1:A:159:THR:HG22	1:A:183:ILE:HD12	1.80	0.62
1:B:157:ILE:HG21	1:B:185:LEU:HB2	1.82	0.62
1:A:260:LEU:HD21	1:A:290:ILE:HG12	1.82	0.62
1:B:386:MET:HE2	1:B:390:LEU:HD21	1.80	0.62
1:A:13:VAL:HB	1:A:14:PRO:CD	2.20	0.62
1:B:78:MET:SD	1:B:82:MET:CE	2.88	0.61
1:A:192:VAL:CG1	1:A:224:ARG:HH12	2.13	0.61
1:B:478:VAL:HG22	3:B:704:HOH:O	1.99	0.61
1:B:121:LEU:HG	1:B:123:PRO:HD2	1.81	0.61
1:B:66:ILE:HD12	1:B:90:PHE:CE1	2.36	0.61
1:B:260:LEU:HD21	1:B:290:ILE:HG12	1.83	0.61
1:A:25:ALA:CB	3:A:652:HOH:O	2.47	0.60
1:A:192:VAL:CG1	1:A:224:ARG:HH22	2.07	0.60
1:A:121:LEU:HG	1:A:122:SER:H	1.64	0.60
1:A:14:PRO:HA	1:B:486:GLY:C	2.22	0.60
1:B:350:VAL:HG12	1:B:361:ILE:HD11	1.82	0.60
1:A:66:ILE:HD11	1:A:385:MET:HE2	1.84	0.60
1:B:343:GLN:NE2	1:B:343:GLN:HA	2.12	0.60
1:A:351:ALA:CA	1:A:361:ILE:HD12	2.30	0.60
1:B:261:ASP:O	1:B:264:THR:HG22	2.02	0.60
1:A:333:THR:HG22	1:A:334:GLN:NE2	2.17	0.60
1:A:66:ILE:HD12	1:A:90:PHE:CE1	2.37	0.60
1:A:305:VAL:H	1:A:309:GLN:HE22	1.47	0.60
1:A:31:THR:HG23	1:A:33:ASN:H	1.67	0.59
1:A:100:GLN:HG2	1:A:263:LEU:HD21	1.84	0.59
1:A:29:ASP:OD2	1:A:342:PRO:HD2	2.02	0.59
1:B:231:ARG:NH1	3:B:767:HOH:O	2.35	0.59
1:A:192:VAL:HG13	1:A:224:ARG:HH12	1.68	0.59
1:B:399:GLU:HB3	3:B:775:HOH:O	2.02	0.59
1:A:355:ARG:HD3	1:A:484:TYR:CZ	2.38	0.59
1:A:253:ARG:NH1	1:A:253:ARG:HB2	2.18	0.58

Continued on next page...

Continued from previous page...

Atom-1	Atom-2	Interatomic distance (Å)	Clash overlap (Å)
1:B:305:VAL:H	1:B:309:GLN:HE22	1.50	0.58
1:B:355:ARG:HD3	1:B:484:TYR:CZ	2.38	0.58
1:A:29:ASP:OD2	1:A:345:THR:HB	2.03	0.58
1:A:122:SER:N	1:A:123:PRO:CD	2.66	0.58
1:A:277:GLN:NE2	1:A:279:ASN:H	2.01	0.58
1:B:122:SER:N	1:B:123:PRO:CD	2.66	0.58
1:A:92:HIS:CD2	1:A:94:ASN:H	2.19	0.58
1:B:471:ILE:CD1	1:B:479:LEU:HG	2.27	0.57
1:B:182:ARG:HH21	1:B:182:ARG:HG2	1.69	0.57
1:A:29:ASP:OD2	1:A:342:PRO:HB2	2.04	0.57
1:A:350:VAL:HG12	1:A:361:ILE:HD11	1.85	0.57
1:A:343:GLN:HE21	1:A:343:GLN:HA	1.69	0.57
1:A:450:LYS:N	3:A:720:HOH:O	2.37	0.57
1:A:182:ARG:HD2	1:A:182:ARG:N	2.20	0.57
1:A:198:ASN:ND2	1:A:227:LEU:HG	2.19	0.57
1:B:356:ARG:HD2	1:B:357:PHE:CE1	2.39	0.57
1:B:194:LEU:HD12	1:B:227:LEU:HD22	1.87	0.57
1:B:277:GLN:NE2	1:B:279:ASN:H	2.03	0.57
1:B:493:ARG:HH21	1:B:497:ALA:HB1	1.70	0.57
1:B:92:HIS:CD2	1:B:94:ASN:H	2.20	0.56
1:A:66:ILE:HD12	1:A:90:PHE:HE1	1.70	0.56
1:A:456:PHE:O	1:A:459:TYR:HB3	2.06	0.56
1:A:13:VAL:CB	1:A:14:PRO:HD3	2.18	0.56
1:A:85:MET:O	1:A:85:MET:SD	2.64	0.55
1:B:195:LYS:O	1:B:199:GLU:HB2	2.07	0.55
1:A:12:TYR:HE2	1:B:489:LYS:NZ	2.04	0.55
1:A:284:ILE:HD11	1:A:312:ASN:HB3	1.89	0.55
1:A:198:ASN:HD22	1:A:227:LEU:HG	1.72	0.55
1:A:25:ALA:O	1:A:26:SER:O	2.24	0.55
1:B:207:GLY:O	1:B:225:THR:HA	2.06	0.55
1:A:328:GLY:HA2	2:A:631:CPR:O3P	2.06	0.55
1:A:371:GLY:O	1:A:374:VAL:HG13	2.07	0.54
1:A:225:THR:HG22	1:A:226:ASP:N	2.16	0.54
1:A:77:ASP:HB2	3:A:650:HOH:O	2.07	0.54
1:B:16:ASP:OD1	1:B:489:LYS:HG3	2.07	0.54
1:A:181:PRO:C	1:A:182:ARG:HD2	2.28	0.54
1:A:471:ILE:CD1	1:A:479:LEU:HG	2.36	0.54
1:A:113:GLY:O	1:A:224:ARG:HA	2.08	0.54
1:B:231:ARG:NH2	1:B:454:GLN:HG2	2.22	0.54
1:B:10:THR:HG22	1:B:11:GLY:H	1.73	0.54
1:B:351:ALA:CA	1:B:361:ILE:HD12	2.32	0.53

Continued on next page...

Continued from previous page...

Atom-1	Atom-2	Interatomic distance (Å)	Clash overlap (Å)
1:A:85:MET:HG3	1:A:457:VAL:HG12	1.89	0.53
1:A:324:GLY:HA2	1:A:343:GLN:HE22	1.71	0.53
1:B:29:ASP:HB3	1:B:342:PRO:HG2	1.89	0.53
1:A:160:SER:HA	1:A:163:ILE:HG22	1.89	0.53
1:A:192:VAL:HG13	1:A:224:ARG:NH1	2.24	0.53
1:A:201:LEU:HD21	1:A:209:LEU:CB	2.38	0.53
1:B:456:PHE:O	1:B:459:TYR:HB3	2.09	0.53
1:B:85:MET:SD	1:B:85:MET:O	2.67	0.53
1:A:253:ARG:HD3	1:A:255:ASP:H	1.74	0.53
1:A:277:GLN:HE22	1:A:279:ASN:H	1.55	0.53
1:B:371:GLY:O	1:B:374:VAL:HG13	2.09	0.53
1:B:29:ASP:CG	1:B:345:THR:HG21	2.30	0.53
1:A:499:ILE:N	1:A:499:ILE:HD12	2.23	0.53
1:A:224:ARG:HG3	1:A:224:ARG:NH1	2.24	0.52
1:B:225:THR:HG22	1:B:226:ASP:N	2.24	0.52
1:A:483:MET:HG3	1:A:484:TYR:N	2.24	0.52
1:B:370:VAL:O	1:B:374:VAL:HG12	2.08	0.52
1:B:113:GLY:O	1:B:224:ARG:N	2.43	0.52
1:A:31:THR:CG2	1:A:33:ASN:H	2.22	0.52
1:B:29:ASP:OD1	1:B:345:THR:HG21	2.08	0.52
1:A:192:VAL:HG13	1:A:224:ARG:CZ	2.39	0.52
1:A:471:ILE:HD12	1:A:488:LEU:HD13	1.92	0.52
1:A:351:ALA:HA	1:A:361:ILE:CD1	2.31	0.52
1:B:144:ILE:O	1:B:145:THR:CB	2.57	0.52
1:B:33:ASN:OD1	1:B:372:HIS:HE1	1.92	0.51
1:B:16:ASP:OD2	1:B:38:LEU:HD23	2.09	0.51
1:A:241:GLN:O	1:A:242:LYS:HB2	2.10	0.51
1:A:157:ILE:CB	1:A:185:LEU:HD12	2.33	0.51
1:B:157:ILE:O	1:B:182:ARG:HB2	2.10	0.51
1:B:19:THR:H	1:B:22:GLN:NE2	2.08	0.51
1:A:493:ARG:HH21	1:A:497:ALA:CB	2.22	0.51
1:B:185:LEU:CD2	1:B:186:VAL:HG22	2.41	0.51
1:A:59:ILE:HA	3:A:739:HOH:O	2.10	0.51
1:B:181:PRO:HG2	1:B:182:ARG:NH2	2.25	0.51
1:B:27:ALA:HB2	3:B:773:HOH:O	2.10	0.51
1:A:192:VAL:HG23	1:A:196:GLU:HB3	1.92	0.51
1:A:211:ILE:HD11	1:A:224:ARG:CG	2.38	0.51
1:A:121:LEU:CG	1:A:123:PRO:HD2	2.32	0.51
1:B:457:VAL:HB	1:B:458:PRO:HD3	1.92	0.50
1:A:483:MET:HE2	1:A:484:TYR:N	2.27	0.50
1:B:121:LEU:HD13	1:B:145:THR:N	2.23	0.50

Continued on next page...

Continued from previous page...

Atom-1	Atom-2	Interatomic distance (Å)	Clash overlap (Å)
1:B:333:THR:O	1:B:333:THR:HG22	2.12	0.50
1:B:19:THR:H	1:B:22:GLN:HE21	1.58	0.50
1:A:157:ILE:HG23	1:A:183:ILE:HB	1.94	0.50
1:B:85:MET:HG3	1:B:457:VAL:CG1	2.42	0.50
1:B:219:VAL:O	1:B:224:ARG:HG3	2.12	0.50
1:A:142:ILE:O	1:A:157:ILE:HG13	2.12	0.50
1:A:78:MET:SD	1:A:82:MET:HE3	2.51	0.50
1:A:63:THR:HG23	1:A:86:GLY:HA3	1.93	0.50
1:B:303:ASN:HA	1:B:322:ARG:O	2.12	0.50
1:A:29:ASP:CG	1:A:342:PRO:HD2	2.33	0.50
1:B:211:ILE:HD11	1:B:224:ARG:NH1	2.25	0.49
1:A:29:ASP:OD2	1:A:342:PRO:CD	2.61	0.49
1:B:356:ARG:HD2	1:B:357:PHE:CZ	2.47	0.49
1:B:29:ASP:HB3	1:B:342:PRO:CG	2.41	0.49
1:A:121:LEU:O	1:A:122:SER:OG	2.27	0.49
1:B:25:ALA:O	1:B:26:SER:O	2.31	0.49
1:A:158:VAL:HG22	1:A:182:ARG:HG3	1.95	0.48
1:B:375:LYS:O	1:B:379:LEU:HG	2.13	0.48
1:A:19:THR:CG2	1:B:15:GLU:HB2	2.42	0.48
1:A:160:SER:HA	1:A:163:ILE:CG2	2.43	0.48
1:A:78:MET:SD	1:A:82:MET:CE	3.01	0.48
1:A:23:LEU:HD23	1:A:24:PHE:CE1	2.48	0.48
1:A:375:LYS:O	1:A:379:LEU:HG	2.13	0.48
1:A:350:VAL:HG12	1:A:361:ILE:HD13	1.93	0.48
1:B:77:ASP:HB2	3:B:638:HOH:O	2.12	0.48
1:A:12:TYR:HB3	1:A:16:ASP:OD1	2.13	0.48
1:B:62:LYS:HE3	3:B:766:HOH:O	2.14	0.48
1:A:277:GLN:C	1:A:277:GLN:NE2	2.65	0.48
1:B:283:GLN:O	1:B:287:VAL:HG23	2.14	0.48
1:B:121:LEU:HG	1:B:122:SER:H	1.78	0.47
1:A:356:ARG:HD2	1:A:357:PHE:CZ	2.49	0.47
1:B:187:VAL:HG21	1:B:212:VAL:HG21	1.96	0.47
1:A:12:TYR:HE2	1:B:489:LYS:HZ1	1.62	0.47
1:B:277:GLN:HE22	1:B:279:ASN:H	1.62	0.47
1:B:378:ALA:O	1:B:483:MET:HG2	2.14	0.47
1:A:196:GLU:O	1:A:196:GLU:HG2	2.15	0.47
1:B:201:LEU:HD21	1:B:209:LEU:CB	2.43	0.47
1:B:369:THR:CG2	3:B:717:HOH:O	2.61	0.47
1:B:211:ILE:HD11	1:B:224:ARG:HD2	1.97	0.46
1:A:15:GLU:HB2	1:B:19:THR:CG2	2.44	0.46
1:A:212:VAL:HG12	1:A:213:ASN:H	1.79	0.46

Continued on next page...

Continued from previous page...

Atom-1	Atom-2	Interatomic distance (Å)	Clash overlap (Å)
1:A:157:ILE:HD12	1:A:185:LEU:CD1	2.46	0.46
1:A:85:MET:HG3	1:A:457:VAL:HG11	1.95	0.46
1:B:225:THR:HG22	1:B:226:ASP:H	1.79	0.46
1:B:300:ILE:HD13	1:B:362:ILE:HD11	1.96	0.46
1:A:368:GLN:H	1:A:372:HIS:HD2	1.63	0.46
1:B:291:LYS:HD3	1:B:317:GLY:O	2.16	0.46
1:B:206:LYS:HB2	1:B:206:LYS:HZ2	1.79	0.46
1:A:214:ASP:O	1:A:215:CYS:CB	2.63	0.46
1:A:189:PRO:O	1:A:192:VAL:HG12	2.14	0.46
1:A:369:THR:HG21	3:A:758:HOH:O	2.16	0.46
1:B:192:VAL:HG13	1:B:192:VAL:O	2.16	0.46
1:A:303:ASN:HA	1:A:322:ARG:O	2.15	0.46
1:B:241:GLN:O	1:B:242:LYS:HB2	2.15	0.46
1:B:242:LYS:HG3	3:B:777:HOH:O	2.16	0.46
1:A:277:GLN:HE21	1:A:277:GLN:CA	2.28	0.46
1:A:253:ARG:HB2	1:A:253:ARG:CZ	2.46	0.46
1:A:264:THR:HG21	1:A:294:TYR:HE1	1.78	0.45
1:B:493:ARG:NH2	1:B:497:ALA:HB1	2.30	0.45
1:A:337:MET:HB3	1:A:338:ALA:H	1.44	0.45
1:A:486:GLY:C	1:B:14:PRO:HA	2.36	0.45
1:A:193:THR:HG22	1:A:194:LEU:N	2.30	0.45
1:A:192:VAL:O	1:A:224:ARG:NH2	2.49	0.45
1:A:185:LEU:CD1	1:A:210:PRO:HG2	2.43	0.45
1:A:33:ASN:OD1	1:A:372:HIS:HE1	1.98	0.45
1:A:53:SER:OG	1:A:64:PRO:HB3	2.16	0.45
1:A:300:ILE:HD13	1:A:362:ILE:HD11	1.97	0.45
1:A:253:ARG:CG	1:A:255:ASP:HB2	2.47	0.45
1:B:261:ASP:O	1:B:264:THR:CG2	2.64	0.45
1:A:78:MET:O	1:A:82:MET:HB2	2.16	0.45
1:B:367:ILE:HG13	1:B:384:VAL:CG1	2.47	0.45
1:A:19:THR:HG21	3:A:658:HOH:O	2.16	0.45
1:B:226:ASP:OD1	1:B:228:LYS:HG2	2.17	0.45
1:A:212:VAL:HG12	1:A:213:ASN:N	2.31	0.45
1:B:284:ILE:HD11	1:B:312:ASN:HB3	1.99	0.45
1:B:66:ILE:HD11	1:B:385:MET:HE3	1.98	0.44
1:A:367:ILE:HG13	1:A:384:VAL:CG1	2.47	0.44
1:B:192:VAL:HG23	1:B:196:GLU:HB3	1.99	0.44
1:B:386:MET:HE2	1:B:390:LEU:CD2	2.46	0.44
1:B:313:LEU:O	1:B:318:VAL:HG22	2.18	0.44
1:B:196:GLU:HA	1:B:199:GLU:CB	2.48	0.44
1:A:82:MET:HE2	1:A:453:ILE:HG21	1.99	0.44

Continued on next page...

Continued from previous page...

Atom-1	Atom-2	Interatomic distance (Å)	Clash overlap (Å)
1:A:209:LEU:HB3	1:A:224:ARG:HB2	2.00	0.44
1:A:333:THR:HG22	1:A:333:THR:O	2.18	0.44
1:B:157:ILE:CG2	1:B:185:LEU:HB2	2.47	0.44
1:B:69:PRO:HG3	1:B:90:PHE:HB2	2.00	0.44
1:A:113:GLY:HA2	1:A:227:LEU:HD23	2.00	0.43
1:A:203:ARG:O	1:A:205:LYS:HD2	2.18	0.43
1:B:66:ILE:HD12	1:B:90:PHE:HE1	1.82	0.43
1:A:66:ILE:HD11	1:A:385:MET:HE3	1.98	0.43
1:B:10:THR:HG22	1:B:11:GLY:N	2.33	0.43
1:B:398:GLY:O	1:B:399:GLU:C	2.57	0.43
1:B:277:GLN:HE22	1:B:279:ASN:HB3	1.83	0.43
1:A:157:ILE:CG2	1:A:185:LEU:HB2	2.49	0.43
1:A:486:GLY:O	1:A:489:LYS:NZ	2.50	0.43
1:A:306:THR:H	1:A:309:GLN:HE21	1.65	0.43
1:B:343:GLN:HE21	1:B:343:GLN:CA	2.08	0.43
1:A:300:ILE:HD13	1:A:362:ILE:CD1	2.48	0.43
1:A:188:ALA:HA	1:A:189:PRO:HD3	1.88	0.43
1:A:121:LEU:N	1:A:143:PRO:O	2.52	0.43
1:B:185:LEU:CD2	1:B:186:VAL:H	2.24	0.43
1:B:283:GLN:HB2	1:B:283:GLN:HE21	1.61	0.43
1:A:194:LEU:N	1:A:194:LEU:HD22	2.33	0.43
1:A:493:ARG:NH2	1:A:497:ALA:HB1	2.34	0.43
1:B:31:THR:HB	1:B:34:ASP:OD2	2.18	0.42
1:A:398:GLY:O	1:A:399:GLU:C	2.57	0.42
1:A:483:MET:CE	1:A:484:TYR:HA	2.42	0.42
1:A:368:GLN:H	1:A:372:HIS:CD2	2.36	0.42
1:A:489:LYS:NZ	1:B:14:PRO:O	2.51	0.42
1:B:185:LEU:HD23	1:B:186:VAL:N	2.22	0.42
1:A:113:GLY:HA2	1:A:227:LEU:CD2	2.49	0.42
1:A:185:LEU:HD22	1:A:186:VAL:O	2.20	0.42
1:B:454:GLN:HB2	1:B:454:GLN:HE21	1.65	0.42
1:B:386:MET:HE1	1:B:389:LEU:HD23	1.97	0.42
1:B:68:SER:HA	1:B:69:PRO:HD3	1.79	0.42
1:A:45:ILE:CG1	1:A:48:GLU:HG3	2.49	0.42
1:A:195:LYS:C	1:A:195:LYS:HD3	2.40	0.42
1:B:162:ASP:OD2	1:B:183:ILE:HG12	2.19	0.42
1:A:157:ILE:N	1:A:183:ILE:O	2.52	0.41
1:B:53:SER:OG	1:B:64:PRO:HB3	2.20	0.41
1:B:253:ARG:HG3	1:B:255:ASP:H	1.83	0.41
1:A:100:GLN:OE1	1:A:259:ARG:HD3	2.20	0.41
1:B:495:MET:SD	1:B:495:MET:N	2.93	0.41

Continued on next page...

Continued from previous page...

Atom-1	Atom-2	Interatomic distance (Å)	Clash overlap (Å)
1:A:157:ILE:HG22	1:A:185:LEU:HB2	2.02	0.41
1:A:369:THR:CG2	3:A:758:HOH:O	2.69	0.41
1:A:197:ALA:C	1:A:199:GLU:H	2.24	0.41
1:B:253:ARG:HG3	1:B:254:GLU:N	2.36	0.41
1:A:392:ALA:HB3	3:A:716:HOH:O	2.19	0.41
1:A:52:THR:OG1	3:A:759:HOH:O	2.21	0.41
1:A:283:GLN:HE21	1:A:283:GLN:HB2	1.73	0.41
1:A:260:LEU:CD2	1:A:290:ILE:HG12	2.51	0.41
1:A:45:ILE:HD12	1:A:47:ASP:OD1	2.21	0.41
1:B:31:THR:CG2	1:B:33:ASN:H	2.26	0.41
1:A:291:LYS:HD3	1:A:317:GLY:O	2.20	0.41
1:B:368:GLN:H	1:B:372:HIS:HD2	1.68	0.41
1:B:225:THR:CG2	1:B:226:ASP:H	2.34	0.41
1:B:188:ALA:HA	1:B:189:PRO:HD3	1.88	0.41
1:A:457:VAL:O	1:A:461:ILE:HG13	2.21	0.41
1:B:71:ASP:OD1	1:B:72:THR:HG23	2.21	0.41
1:B:63:THR:HG23	1:B:86:GLY:HA3	2.03	0.40
1:A:466:HIS:HD2	3:A:708:HOH:O	2.04	0.40
1:B:121:LEU:CD1	1:B:123:PRO:HD2	2.51	0.40
1:A:12:TYR:CE2	1:B:489:LYS:NZ	2.86	0.40
1:B:355:ARG:HD3	1:B:484:TYR:OH	2.22	0.40
1:A:105:ARG:HG2	1:A:105:ARG:HH11	1.86	0.40
1:A:359:VAL:HA	1:A:360:PRO:HD3	1.92	0.40
1:A:185:LEU:CD2	1:A:186:VAL:N	2.83	0.40
1:A:206:LYS:HB2	1:A:206:LYS:HZ2	1.86	0.40
1:B:296:HIS:N	1:B:296:HIS:CD2	2.89	0.40

There are no symmetry-related clashes.

5.3 Torsion angles [i](#)

5.3.1 Protein backbone [i](#)

In the following table, the Percentiles column shows the percent Ramachandran outliers of the chain as a percentile score with respect to all X-ray entries followed by that with respect to entries of similar resolution.

The Analysed column shows the number of residues for which the backbone conformation was analysed, and the total number of residues.

Mol	Chain	Analysed	Favoured	Allowed	Outliers	Percentiles	
1	A	383/514 (74%)	342 (89%)	31 (8%)	10 (3%)	7	10
1	B	383/514 (74%)	339 (88%)	31 (8%)	13 (3%)	5	6
All	All	766/1028 (74%)	681 (89%)	62 (8%)	23 (3%)	5	7

All (23) Ramachandran outliers are listed below:

Mol	Chain	Res	Type
1	A	26	SER
1	A	122	SER
1	A	229	LYS
1	B	26	SER
1	B	122	SER
1	A	14	PRO
1	A	16	ASP
1	A	302	GLY
1	A	495	MET
1	B	16	ASP
1	B	145	THR
1	B	227	LEU
1	B	229	LYS
1	B	302	GLY
1	A	497	ALA
1	B	14	PRO
1	B	225	THR
1	A	213	ASN
1	B	334	GLN
1	A	13	VAL
1	B	121	LEU
1	B	13	VAL
1	B	143	PRO

5.3.2 Protein sidechains ⓘ

In the following table, the Percentiles column shows the percent sidechain outliers of the chain as a percentile score with respect to all X-ray entries followed by that with respect to entries of similar resolution.

The Analysed column shows the number of residues for which the sidechain conformation was analysed, and the total number of residues.

Mol	Chain	Analysed	Rotameric	Outliers	Percentiles	
1	A	311/420 (74%)	289 (93%)	22 (7%)	18	34

Continued on next page...

Continued from previous page...

Mol	Chain	Analysed	Rotameric	Outliers	Percentiles	
1	B	311/420 (74%)	287 (92%)	24 (8%)	16	30
All	All	622/840 (74%)	576 (93%)	46 (7%)	17	31

All (46) residues with a non-rotameric sidechain are listed below:

Mol	Chain	Res	Type
1	A	16	ASP
1	A	29	ASP
1	A	31	THR
1	A	38	LEU
1	A	66	ILE
1	A	77	ASP
1	A	85	MET
1	A	93	HIS
1	A	123	PRO
1	A	209	LEU
1	A	253	ARG
1	A	270	VAL
1	A	277	GLN
1	A	291	LYS
1	A	335	GLU
1	A	337	MET
1	A	343	GLN
1	A	374	VAL
1	A	454	GLN
1	A	471	ILE
1	A	479	LEU
1	A	483	MET
1	B	29	ASP
1	B	30	LEU
1	B	31	THR
1	B	38	LEU
1	B	66	ILE
1	B	77	ASP
1	B	85	MET
1	B	93	HIS
1	B	182	ARG
1	B	185	LEU
1	B	209	LEU
1	B	224	ARG
1	B	227	LEU
1	B	270	VAL

Continued on next page...

Continued from previous page...

Mol	Chain	Res	Type
1	B	277	GLN
1	B	283	GLN
1	B	291	LYS
1	B	335	GLU
1	B	343	GLN
1	B	356	ARG
1	B	374	VAL
1	B	454	GLN
1	B	479	LEU
1	B	483	MET

Some sidechains can be flipped to improve hydrogen bonding and reduce clashes. All (29) such sidechains are listed below:

Mol	Chain	Res	Type
1	A	92	HIS
1	A	93	HIS
1	A	109	ASN
1	A	112	GLN
1	A	202	GLN
1	A	241	GLN
1	A	277	GLN
1	A	309	GLN
1	A	312	ASN
1	A	334	GLN
1	A	343	GLN
1	A	372	HIS
1	A	454	GLN
1	B	22	GLN
1	B	92	HIS
1	B	93	HIS
1	B	94	ASN
1	B	109	ASN
1	B	112	GLN
1	B	202	GLN
1	B	241	GLN
1	B	265	GLN
1	B	277	GLN
1	B	296	HIS
1	B	309	GLN
1	B	312	ASN
1	B	343	GLN
1	B	372	HIS

Continued on next page...

Continued from previous page...

Mol	Chain	Res	Type
1	B	454	GLN

5.3.3 RNA ⓘ

There are no RNA molecules in this entry.

5.4 Non-standard residues in protein, DNA, RNA chains ⓘ

There are no non-standard protein/DNA/RNA residues in this entry.

5.5 Carbohydrates ⓘ

There are no carbohydrates in this entry.

5.6 Ligand geometry ⓘ

2 ligands are modelled in this entry.

In the following table, the Counts columns list the number of bonds (or angles) for which Mogul statistics could be retrieved, the number of bonds (or angles) that are observed in the model and the number of bonds (or angles) that are defined in the chemical component dictionary. The Link column lists molecule types, if any, to which the group is linked. The Z score for a bond length (or angle) is the number of standard deviations the observed value is removed from the expected value. A bond length (or angle) with $|Z| > 2$ is considered an outlier worth inspection. RMSZ is the root-mean-square of all Z scores of the bond lengths (or angles).

Mol	Type	Chain	Res	Link	Bond lengths			Bond angles		
					Counts	RMSZ	# $ Z > 2$	Counts	RMSZ	# $ Z > 2$
2	CPR	A	631	1	19,24,25	3.96	9 (47%)	22,36,38	2.43	8 (36%)
2	CPR	B	631	1	19,24,25	4.05	9 (47%)	22,36,38	2.44	8 (36%)

In the following table, the Chirals column lists the number of chiral outliers, the number of chiral centers analysed, the number of these observed in the model and the number defined in the chemical component dictionary. Similar counts are reported in the Torsion and Rings columns. '-' means no outliers of that kind were identified.

Mol	Type	Chain	Res	Link	Chirals	Torsions	Rings
2	CPR	A	631	1	-	0/6/26/26	0/3/3/3
2	CPR	B	631	1	-	0/6/26/26	0/3/3/3

All (18) bond length outliers are listed below:

Mol	Chain	Res	Type	Atoms	Z	Observed(Å)	Ideal(Å)
2	B	631	CPR	C5-N7	-2.43	1.31	1.38
2	A	631	CPR	C5-N7	-2.39	1.31	1.38
2	B	631	CPR	P-O5'	2.10	1.67	1.60
2	A	631	CPR	P-O5'	2.26	1.67	1.60
2	B	631	CPR	O4'-C4'	3.06	1.52	1.45
2	A	631	CPR	O4'-C4'	3.17	1.52	1.45
2	B	631	CPR	O5'-C5'	3.28	1.58	1.44
2	A	631	CPR	C2-N3	3.39	1.38	1.32
2	A	631	CPR	O5'-C5'	3.41	1.58	1.44
2	A	631	CPR	C6-N1	3.45	1.38	1.32
2	B	631	CPR	C6-N1	3.49	1.38	1.32
2	B	631	CPR	C2-N1	3.52	1.39	1.33
2	B	631	CPR	C2-N3	3.58	1.38	1.32
2	A	631	CPR	C4-N3	3.68	1.41	1.35
2	A	631	CPR	C2-N1	3.80	1.39	1.33
2	B	631	CPR	C4-N3	3.85	1.41	1.35
2	A	631	CPR	O4'-C1'	14.24	1.59	1.41
2	B	631	CPR	O4'-C1'	14.82	1.59	1.41

All (16) bond angle outliers are listed below:

Mol	Chain	Res	Type	Atoms	Z	Observed(°)	Ideal(°)
2	B	631	CPR	N1-C2-N3	-6.56	119.73	127.82
2	A	631	CPR	N1-C2-N3	-6.43	119.89	127.82
2	A	631	CPR	O4'-C4'-C5'	-4.29	93.98	109.32
2	B	631	CPR	O4'-C4'-C5'	-4.10	94.64	109.32
2	B	631	CPR	C5-C4-N3	-3.52	119.29	125.77
2	A	631	CPR	C5-C4-N3	-3.42	119.48	125.77
2	B	631	CPR	O3P-P-O5'	-2.69	98.81	106.56
2	B	631	CPR	O5'-C5'-C4'	-2.55	99.71	109.12
2	A	631	CPR	O5'-P-O1P	-2.31	101.27	107.14
2	A	631	CPR	O3P-P-O2P	2.22	115.82	107.38
2	A	631	CPR	O4'-C1'-N9	2.25	112.80	108.10
2	B	631	CPR	O3P-P-O2P	2.74	117.83	107.38
2	A	631	CPR	C6-N1-C2	3.20	120.30	115.89
2	B	631	CPR	C6-N1-C2	3.24	120.37	115.89
2	B	631	CPR	O3'-C3'-C2'	3.28	122.51	111.83
2	A	631	CPR	O3'-C3'-C2'	3.58	123.47	111.83

There are no chirality outliers.

There are no torsion outliers.

There are no ring outliers.

2 monomers are involved in 3 short contacts:

Mol	Chain	Res	Type	Clashes	Symm-Clashes
2	A	631	CPR	2	0
2	B	631	CPR	1	0

5.7 Other polymers [i](#)

There are no such residues in this entry.

5.8 Polymer linkage issues [i](#)

There are no chain breaks in this entry.

6 Fit of model and data

6.1 Protein, DNA and RNA chains

In the following table, the column labelled ‘#RSRZ> 2’ contains the number (and percentage) of RSRZ outliers, followed by percent RSRZ outliers for the chain as percentile scores relative to all X-ray entries and entries of similar resolution. The OWAB column contains the minimum, median, 95th percentile and maximum values of the occupancy-weighted average B-factor per residue. The column labelled ‘Q< 0.9’ lists the number of (and percentage) of residues with an average occupancy less than 0.9.

Mol	Chain	Analysed	<RSRZ>	#RSRZ>2	OWAB(Å ²)	Q<0.9
1	A	395/514 (76%)	0.49	48 (12%) 5 5	12, 28, 93, 109	0
1	B	395/514 (76%)	0.52	51 (12%) 5 4	13, 28, 94, 105	0
All	All	790/1028 (76%)	0.51	99 (12%) 5 5	12, 28, 93, 109	0

All (99) RSRZ outliers are listed below:

Mol	Chain	Res	Type	RSRZ
1	A	10	THR	10.0
1	A	12	TYR	10.0
1	B	163	ILE	7.8
1	B	228	LYS	7.6
1	B	498	GLN	7.6
1	A	13	VAL	6.5
1	B	497	ALA	6.4
1	B	14	PRO	6.2
1	B	10	THR	6.2
1	B	120	VAL	6.0
1	B	12	TYR	5.8
1	A	163	ILE	5.7
1	A	15	GLU	5.6
1	B	122	SER	5.4
1	B	156	GLY	5.4
1	B	213	ASN	5.4
1	B	212	VAL	5.3
1	A	495	MET	5.3
1	A	499	ILE	5.0
1	A	11	GLY	4.9
1	B	227	LEU	4.9
1	B	157	ILE	4.8
1	B	118	PRO	4.7
1	B	185	LEU	4.6

Continued on next page...

Continued from previous page...

Mol	Chain	Res	Type	RSRZ
1	A	398	GLY	4.6
1	A	224	ARG	4.6
1	A	498	GLN	4.6
1	B	13	VAL	4.5
1	B	16	ASP	4.5
1	A	189	PRO	4.5
1	A	120	VAL	4.3
1	B	496	SER	4.3
1	A	14	PRO	4.3
1	A	157	ILE	4.2
1	B	226	ASP	4.2
1	B	225	THR	4.1
1	A	225	THR	4.0
1	B	499	ILE	4.0
1	A	497	ALA	3.9
1	A	186	VAL	3.9
1	A	29	ASP	3.8
1	A	156	GLY	3.6
1	B	399	GLU	3.5
1	A	122	SER	3.5
1	A	123	PRO	3.5
1	B	15	GLU	3.5
1	A	336	VAL	3.4
1	A	496	SER	3.4
1	B	229	LYS	3.2
1	A	399	GLU	3.2
1	A	185	LEU	3.2
1	A	117	ASP	3.2
1	A	213	ASN	3.1
1	B	495	MET	3.1
1	B	494	THR	3.0
1	A	16	ASP	3.0
1	A	215	CYS	3.0
1	A	141	GLY	3.0
1	A	159	THR	3.0
1	B	330	ILE	2.9
1	B	186	VAL	2.9
1	B	189	PRO	2.9
1	A	158	VAL	2.8
1	A	155	VAL	2.8
1	B	336	VAL	2.8
1	A	118	PRO	2.7

Continued on next page...

Continued from previous page...

Mol	Chain	Res	Type	RSRZ
1	A	330	ILE	2.7
1	B	141	GLY	2.7
1	A	218	LEU	2.7
1	B	374	VAL	2.7
1	B	77	ASP	2.7
1	B	215	CYS	2.7
1	B	219	VAL	2.7
1	A	196	GLU	2.4
1	B	398	GLY	2.4
1	A	162	ASP	2.4
1	A	187	VAL	2.4
1	A	328	GLY	2.4
1	B	121	LEU	2.4
1	B	205	LYS	2.4
1	B	27	ALA	2.3
1	A	77	ASP	2.3
1	B	187	VAL	2.3
1	A	164	ASP	2.3
1	B	160	SER	2.3
1	A	161	ARG	2.3
1	B	159	THR	2.3
1	A	115	ILE	2.3
1	B	327	CYS	2.2
1	B	158	VAL	2.2
1	B	230	ASN	2.2
1	B	164	ASP	2.1
1	A	331	CYS	2.1
1	B	194	LEU	2.1
1	A	302	GLY	2.1
1	B	211	ILE	2.1
1	B	207	GLY	2.1
1	A	188	ALA	2.0
1	B	218	LEU	2.0

6.2 Non-standard residues in protein, DNA, RNA chains ⓘ

There are no non-standard protein/DNA/RNA residues in this entry.

6.3 Carbohydrates ⓘ

There are no carbohydrates in this entry.

6.4 Ligands [i](#)

In the following table, the Atoms column lists the number of modelled atoms in the group and the number defined in the chemical component dictionary. LLDF column lists the quality of electron density of the group with respect to its neighbouring residues in protein, DNA or RNA chains. The B-factors column lists the minimum, median, 95th percentile and maximum values of B factors of atoms in the group. The column labelled 'Q< 0.9' lists the number of atoms with occupancy less than 0.9.

Mol	Type	Chain	Res	Atoms	RSCC	RSR	LLDF	B-factors(\AA^2)	Q<0.9
2	CPR	A	631	22/23	0.97	0.15	-0.24	22,29,48,50	0
2	CPR	B	631	22/23	0.98	0.13	-0.77	20,28,46,48	0

6.5 Other polymers [i](#)

There are no such residues in this entry.