



Full wwPDB X-ray Structure Validation Report ⓘ

Feb 1, 2016 – 05:44 PM GMT

PDB ID : 4JCH
Title : OSH4 bound to an electrophilic oxysterol
Authors : Koag, M.C.; Kou, Y.I.; Monzingo, A.F.; Lee, S.
Deposited on : 2013-02-21
Resolution : 1.70 Å(reported)

This is a Full wwPDB X-ray Structure Validation Report for a publicly released PDB entry.
We welcome your comments at validation@mail.wwpdb.org
A user guide is available at
<http://wwpdb.org/validation/2016/XrayValidationReportHelp>
with specific help available everywhere you see the ⓘ symbol.

The following versions of software and data (see [references ⓘ](#)) were used in the production of this report:

MolProbity : 4.02b-467
Mogul : 1.7 (RC4), CSD as536be (2015)
Xtriage (Phenix) : 1.9-1692
EDS : rb-20026688
Percentile statistics : 20151230.v01 (using entries in the PDB archive December 30th 2015)
Refmac : 5.8.0135
CCP4 : 6.5.0
Ideal geometry (proteins) : Engh & Huber (2001)
Ideal geometry (DNA, RNA) : Parkinson et al. (1996)
Validation Pipeline (wwPDB-VP) : trunk26865

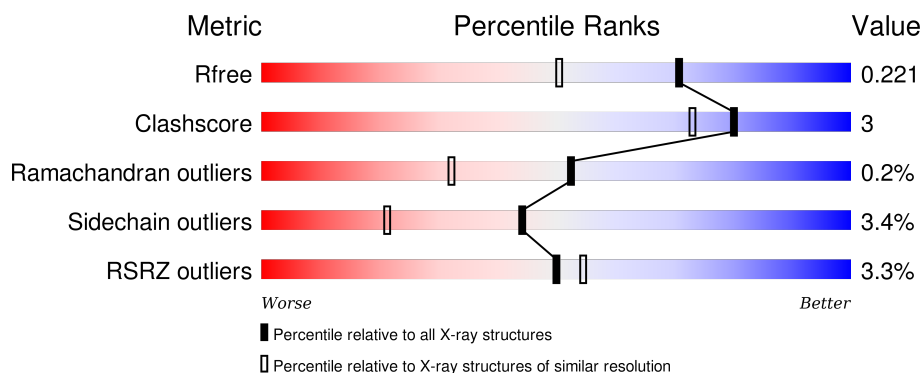
1 Overall quality at a glance

The following experimental techniques were used to determine the structure:

X-RAY DIFFRACTION

The reported resolution of this entry is 1.70 Å.

Percentile scores (ranging between 0-100) for global validation metrics of the entry are shown in the following graphic. The table shows the number of entries on which the scores are based.



Metric	Whole archive (#Entries)	Similar resolution (#Entries, resolution range(Å))
R_{free}	91344	3190 (1.70-1.70)
Clashscore	102246	3585 (1.70-1.70)
Ramachandran outliers	100387	3527 (1.70-1.70)
Sidechain outliers	100360	3527 (1.70-1.70)
RSRZ outliers	91569	3200 (1.70-1.70)

The table below summarises the geometric issues observed across the polymeric chains and their fit to the electron density. The red, orange, yellow and green segments on the lower bar indicate the fraction of residues that contain outliers for ≥ 3 , 2, 1 and 0 types of geometric quality criteria. A grey segment represents the fraction of residues that are not modelled. The numeric value for each fraction is indicated below the corresponding segment, with a dot representing fractions $\leq 5\%$. The upper red bar (where present) indicates the fraction of residues that have poor fit to the electron density. The numeric value is given above the bar.

Mol	Chain	Length	Quality of chain
1	A	436	<div> <div>4%</div> <div>89%</div> <div>9%</div> <div>.</div> </div>
1	B	436	<div> <div>3%</div> <div>89%</div> <div>9%</div> <div>..</div> </div>

2 Entry composition [i](#)

There are 3 unique types of molecules in this entry. The entry contains 7400 atoms, of which 0 are hydrogens and 0 are deuteriums.

In the tables below, the ZeroOcc column contains the number of atoms modelled with zero occupancy, the AltConf column contains the number of residues with at least one atom in alternate conformation and the Trace column contains the number of residues modelled with at most 2 atoms.

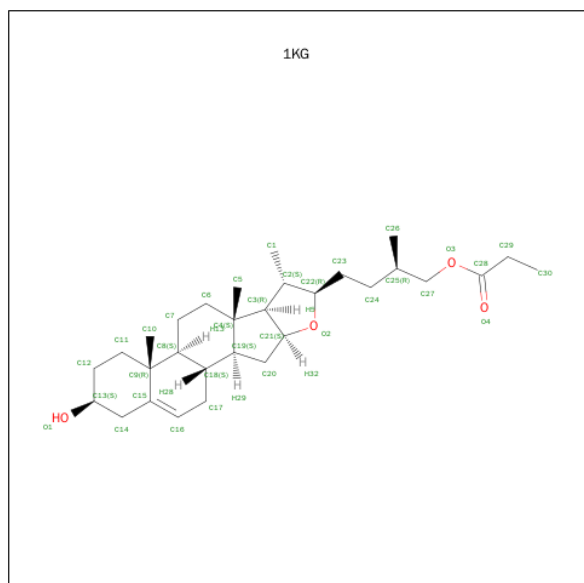
- Molecule 1 is a protein called Protein KES1.

Mol	Chain	Residues	Atoms					ZeroOcc	AltConf	Trace
1	A	436	Total	C	N	O	S	0	0	0
			3470	2222	571	670	7			
1	B	430	Total	C	N	O	S	0	0	0
			3414	2186	561	660	7			

There are 6 discrepancies between the modelled and reference sequences:

Chain	Residue	Modelled	Actual	Comment	Reference
A	-1	MET	-	EXPRESSION TAG	UNP P35844
A	0	ASP	-	EXPRESSION TAG	UNP P35844
A	1	PRO	-	EXPRESSION TAG	UNP P35844
B	-1	MET	-	EXPRESSION TAG	UNP P35844
B	0	ASP	-	EXPRESSION TAG	UNP P35844
B	1	PRO	-	EXPRESSION TAG	UNP P35844

- Molecule 2 is (3BETA,9BETA,22R,25R)-3-HYDROXYFUROST-5-EN-27-YL PROPANOATE (three-letter code: 1KG) (formula: C₃₀H₄₈O₄).



Mol	Chain	Residues	Atoms			ZeroOcc	AltConf
2	A	1	Total 34	C 30	O 4	0	0
2	B	1	Total 34	C 30	O 4	0	0

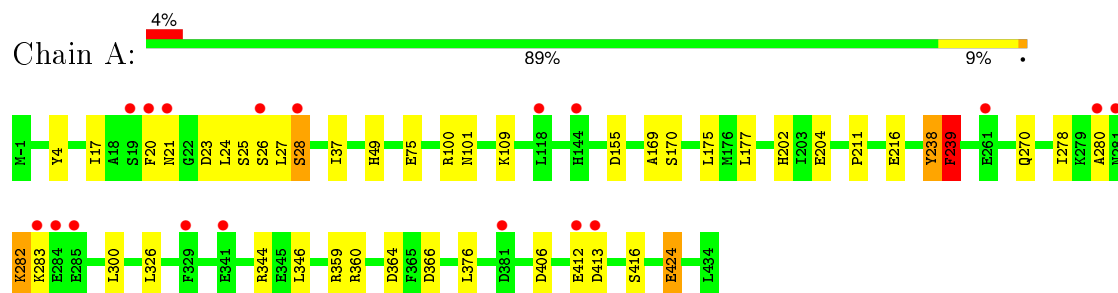
- Molecule 3 is water.

Mol	Chain	Residues	Atoms		ZeroOcc	AltConf
3	A	214	Total 214	O 214	0	0
3	B	234	Total 234	O 234	0	0

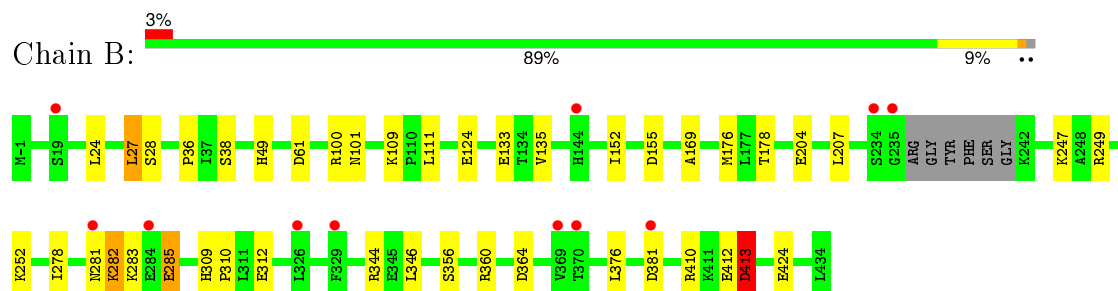
3 Residue-property plots [i](#)

These plots are drawn for all protein, RNA and DNA chains in the entry. The first graphic for a chain summarises the proportions of errors displayed in the second graphic. The second graphic shows the sequence view annotated by issues in geometry and electron density. Residues are color-coded according to the number of geometric quality criteria for which they contain at least one outlier: green = 0, yellow = 1, orange = 2 and red = 3 or more. A red dot above a residue indicates a poor fit to the electron density ($\text{RSRZ} > 2$). Stretches of 2 or more consecutive residues without any outlier are shown as a green connector. Residues present in the sample, but not in the model, are shown in grey.

• Molecule 1: Protein KES1



• Molecule 1: Protein KES1



4 Data and refinement statistics

Property	Value	Source
Space group	P 1	Depositor
Cell constants a, b, c, α , β , γ	51.62Å 65.69Å 77.94Å 99.17° 100.17° 96.76°	Depositor
Resolution (Å)	19.86 – 1.70 19.85 – 1.70	Depositor EDS
% Data completeness (in resolution range)	93.4 (19.86-1.70) 88.2 (19.85-1.70)	Depositor EDS
R_{merge}	0.04	Depositor
R_{sym}	(Not available)	Depositor
$\langle I/\sigma(I) \rangle$ ¹	3.16 (at 1.70Å)	Xtriage
Refinement program	REFMAC 5.7.0032	Depositor
R, R_{free}	0.181 , 0.215 0.189 , 0.221	Depositor DCC
R_{free} test set	5142 reflections (5.35%)	DCC
Wilson B-factor (Å ²)	18.3	Xtriage
Anisotropy	0.473	Xtriage
Bulk solvent k_{sol} (e/Å ³), B_{sol} (Å ²)	0.38 , 42.8	EDS
Estimated twinning fraction	No twinning to report.	Xtriage
L-test for twinning ²	$\langle L \rangle = 0.49$, $\langle L^2 \rangle = 0.32$	Xtriage
Outliers	0 of 103310 reflections	Xtriage
F_o, F_c correlation	0.95	EDS
Total number of atoms	7400	wwPDB-VP
Average B, all atoms (Å ²)	24.0	wwPDB-VP

Xtriage's analysis on translational NCS is as follows: *The largest off-origin peak in the Patterson function is 9.29% of the height of the origin peak. No significant pseudotranslation is detected.*

¹Intensities estimated from amplitudes.

²Theoretical values of $\langle |L| \rangle$, $\langle L^2 \rangle$ for acentric reflections are 0.5, 0.375 respectively for untwinned datasets, and 0.333, 0.2 for perfectly twinned datasets.

5 Model quality [i](#)

5.1 Standard geometry [i](#)

Bond lengths and bond angles in the following residue types are not validated in this section: 1KG

The Z score for a bond length (or angle) is the number of standard deviations the observed value is removed from the expected value. A bond length (or angle) with $|Z| > 5$ is considered an outlier worth inspection. RMSZ is the root-mean-square of all Z scores of the bond lengths (or angles).

Mol	Chain	Bond lengths		Bond angles	
		RMSZ	$\# Z > 5$	RMSZ	$\# Z > 5$
1	A	1.00	3/3559 (0.1%)	1.04	12/4819 (0.2%)
1	B	1.02	2/3500 (0.1%)	1.03	12/4741 (0.3%)
All	All	1.01	5/7059 (0.1%)	1.03	24/9560 (0.3%)

All (5) bond length outliers are listed below:

Mol	Chain	Res	Type	Atoms	Z	Observed(Å)	Ideal(Å)
1	B	124	GLU	CD-OE2	7.15	1.33	1.25
1	A	239	PHE	N-CA	7.04	1.60	1.46
1	B	312	GLU	CD-OE2	5.58	1.31	1.25
1	A	239	PHE	CA-CB	5.14	1.65	1.53
1	A	416	SER	CB-OG	5.02	1.48	1.42

All (24) bond angle outliers are listed below:

Mol	Chain	Res	Type	Atoms	Z	Observed(°)	Ideal(°)
1	A	239	PHE	N-CA-CB	8.33	125.59	110.60
1	A	238	TYR	O-C-N	-8.16	109.65	122.70
1	B	249	ARG	NE-CZ-NH1	7.67	124.13	120.30
1	B	364	ASP	CB-CG-OD2	7.26	124.83	118.30
1	B	155	ASP	CB-CG-OD1	6.73	124.35	118.30
1	B	61	ASP	CB-CG-OD1	6.68	124.31	118.30
1	A	364	ASP	CB-CG-OD2	6.54	124.19	118.30
1	B	360	ARG	NE-CZ-NH1	6.48	123.54	120.30
1	B	410	ARG	NE-CZ-NH1	6.39	123.50	120.30
1	A	360	ARG	NE-CZ-NH2	-6.32	117.14	120.30
1	B	410	ARG	NE-CZ-NH2	-6.11	117.24	120.30
1	A	238	TYR	CA-C-N	6.05	130.51	117.20
1	A	155	ASP	CB-CG-OD1	6.01	123.71	118.30
1	B	344	ARG	NE-CZ-NH1	6.00	123.30	120.30

Continued on next page...

Continued from previous page...

Mol	Chain	Res	Type	Atoms	Z	Observed(°)	Ideal(°)
1	A	366	ASP	CB-CG-OD1	5.77	123.49	118.30
1	B	61	ASP	CB-CG-OD2	-5.65	113.22	118.30
1	A	360	ARG	NE-CZ-NH1	5.62	123.11	120.30
1	A	406	ASP	CB-CG-OD1	5.44	123.19	118.30
1	B	360	ARG	NE-CZ-NH2	-5.17	117.71	120.30
1	A	364	ASP	CB-CG-OD1	-5.17	113.65	118.30
1	B	249	ARG	NE-CZ-NH2	-5.16	117.72	120.30
1	A	344	ARG	NE-CZ-NH1	5.16	122.88	120.30
1	A	359	ARG	NE-CZ-NH1	5.15	122.87	120.30
1	B	133	GLU	OE1-CD-OE2	5.10	129.42	123.30

There are no chirality outliers.

There are no planarity outliers.

5.2 Too-close contacts ⓘ

In the following table, the Non-H and H(model) columns list the number of non-hydrogen atoms and hydrogen atoms in the chain respectively. The H(added) column lists the number of hydrogen atoms added and optimized by MolProbity. The Clashes column lists the number of clashes within the asymmetric unit, whereas Symm-Clashes lists symmetry related clashes.

Mol	Chain	Non-H	H(model)	H(added)	Clashes	Symm-Clashes
1	A	3470	0	3369	29	0
1	B	3414	0	3311	17	0
2	A	34	0	48	2	0
2	B	34	0	48	2	0
3	A	214	0	0	11	0
3	B	234	0	0	4	0
All	All	7400	0	6776	46	0

The all-atom clashscore is defined as the number of clashes found per 1000 atoms (including hydrogen atoms). The all-atom clashscore for this structure is 3.

All (46) close contacts within the same asymmetric unit are listed below, sorted by their clash magnitude.

Atom-1	Atom-2	Interatomic distance (Å)	Clash overlap (Å)
1:B:247:LYS:HD2	3:B:828:HOH:O	1.33	1.25
1:A:17:ILE:O	1:A:20:PHE:HB3	1.64	0.97
1:B:24:LEU:HD11	2:B:501:IKG:O4	1.70	0.92
1:A:202:HIS:CD2	1:A:216:GLU:OE1	2.32	0.82

Continued on next page...

Continued from previous page...

Atom-1	Atom-2	Interatomic distance (Å)	Clash overlap (Å)
1:B:176:MET:SD	1:B:204:GLU:OE1	2.41	0.78
1:A:424:GLU:H	1:A:424:GLU:CD	1.94	0.70
1:A:270:GLN:HB2	3:A:618:HOH:O	1.92	0.69
1:B:204:GLU:HG3	3:B:678:HOH:O	1.95	0.67
1:B:282:LYS:HB3	1:B:285:GLU:HG3	1.77	0.66
1:A:4:TYR:CZ	3:A:782:HOH:O	2.50	0.65
1:A:238:TYR:O	1:A:239:PHE:CB	2.42	0.64
1:A:17:ILE:O	1:A:20:PHE:CB	2.45	0.60
1:A:49:HIS:HE1	3:A:631:HOH:O	1.86	0.58
1:A:238:TYR:O	1:A:239:PHE:HB2	2.04	0.58
1:A:26:SER:O	1:A:27:LEU:C	2.41	0.57
1:A:4:TYR:CE1	3:A:782:HOH:O	2.57	0.57
1:B:49:HIS:HE1	3:B:773:HOH:O	1.88	0.57
1:B:278:ILE:HD13	1:B:283:LYS:HA	1.86	0.56
1:A:26:SER:HB3	3:A:738:HOH:O	2.09	0.53
1:B:309:HIS:CG	1:B:310:PRO:HD2	2.45	0.52
1:A:26:SER:O	1:A:28:SER:N	2.43	0.51
1:A:412:GLU:O	1:A:413:ASP:CB	2.58	0.51
1:A:270:GLN:CB	3:A:618:HOH:O	2.53	0.51
1:B:412:GLU:O	1:B:413:ASP:HB2	2.11	0.51
1:A:169:ALA:HB1	1:A:177:LEU:HD11	1.95	0.48
1:A:37:ILE:HD12	3:A:774:HOH:O	2.14	0.48
1:B:27:LEU:HD22	1:B:28:SER:O	2.13	0.48
1:B:281:ASN:OD1	1:B:282:LYS:NZ	2.41	0.46
1:A:49:HIS:HD2	3:A:731:HOH:O	1.98	0.46
1:A:109:LYS:HD2	2:A:501:1KG:H46	1.97	0.46
1:A:101:ASN:ND2	3:A:739:HOH:O	2.48	0.46
1:A:17:ILE:HG21	1:A:175:LEU:HD22	1.98	0.45
1:A:49:HIS:CE1	3:A:631:HOH:O	2.66	0.45
1:A:75:GLU:HG3	1:A:75:GLU:O	2.17	0.45
1:A:280:ALA:HB3	1:A:282:LYS:HD2	1.99	0.45
1:B:101:ASN:ND2	3:B:673:HOH:O	2.50	0.44
1:A:37:ILE:CD1	3:A:774:HOH:O	2.66	0.44
1:B:38:SER:HA	1:B:111:LEU:HB2	2.00	0.44
1:A:278:ILE:HD13	1:A:283:LYS:HA	2.00	0.43
1:B:169:ALA:HA	1:B:178:THR:O	2.19	0.43
1:B:381:ASP:OD1	1:B:381:ASP:N	2.50	0.43
1:B:109:LYS:HD2	2:B:501:1KG:H46	2.00	0.43
1:A:211:PRO:CG	2:A:501:1KG:H41	2.49	0.41
1:B:135:VAL:O	1:B:152:ILE:HA	2.21	0.41
1:A:412:GLU:O	1:A:413:ASP:HB2	2.21	0.40

Continued on next page...

Continued from previous page...

Atom-1	Atom-2	Interatomic distance (Å)	Clash overlap (Å)
1:A:424:GLU:N	1:A:424:GLU:CD	2.70	0.40

There are no symmetry-related clashes.

5.3 Torsion angles [i](#)

5.3.1 Protein backbone [i](#)

In the following table, the Percentiles column shows the percent Ramachandran outliers of the chain as a percentile score with respect to all X-ray entries followed by that with respect to entries of similar resolution.

The Analysed column shows the number of residues for which the backbone conformation was analysed, and the total number of residues.

Mol	Chain	Analysed	Favoured	Allowed	Outliers	Percentiles	
1	A	434/436 (100%)	415 (96%)	18 (4%)	1 (0%)	52	32
1	B	426/436 (98%)	413 (97%)	12 (3%)	1 (0%)	52	32
All	All	860/872 (99%)	828 (96%)	30 (4%)	2 (0%)	52	32

All (2) Ramachandran outliers are listed below:

Mol	Chain	Res	Type
1	A	239	PHE
1	B	413	ASP

5.3.2 Protein sidechains [i](#)

In the following table, the Percentiles column shows the percent sidechain outliers of the chain as a percentile score with respect to all X-ray entries followed by that with respect to entries of similar resolution.

The Analysed column shows the number of residues for which the sidechain conformation was analysed, and the total number of residues.

Mol	Chain	Analysed	Rotameric	Outliers	Percentiles	
1	A	380/391 (97%)	366 (96%)	14 (4%)	41	18
1	B	374/391 (96%)	362 (97%)	12 (3%)	46	24
All	All	754/782 (96%)	728 (97%)	26 (3%)	44	21

All (26) residues with a non-rotameric sidechain are listed below:

Mol	Chain	Res	Type
1	A	21	ASN
1	A	23	ASP
1	A	24	LEU
1	A	25	SER
1	A	28	SER
1	A	100	ARG
1	A	170	SER
1	A	204	GLU
1	A	282	LYS
1	A	300	LEU
1	A	326	LEU
1	A	346	LEU
1	A	376	LEU
1	A	424	GLU
1	B	27	LEU
1	B	36	PRO
1	B	100	ARG
1	B	207	LEU
1	B	252	LYS
1	B	282	LYS
1	B	285	GLU
1	B	346	LEU
1	B	356	SER
1	B	376	LEU
1	B	413	ASP
1	B	424	GLU

Some sidechains can be flipped to improve hydrogen bonding and reduce clashes. All (6) such sidechains are listed below:

Mol	Chain	Res	Type
1	A	49	HIS
1	A	101	ASN
1	A	202	HIS
1	B	49	HIS
1	B	101	ASN
1	B	244	ASN

5.3.3 RNA ⓘ

There are no RNA molecules in this entry.

5.4 Non-standard residues in protein, DNA, RNA chains ⓘ

There are no non-standard protein/DNA/RNA residues in this entry.

5.5 Carbohydrates ⓘ

There are no carbohydrates in this entry.

5.6 Ligand geometry ⓘ

2 ligands are modelled in this entry.

In the following table, the Counts columns list the number of bonds (or angles) for which Mogul statistics could be retrieved, the number of bonds (or angles) that are observed in the model and the number of bonds (or angles) that are defined in the chemical component dictionary. The Link column lists molecule types, if any, to which the group is linked. The Z score for a bond length (or angle) is the number of standard deviations the observed value is removed from the expected value. A bond length (or angle) with $|Z| > 2$ is considered an outlier worth inspection. RMSZ is the root-mean-square of all Z scores of the bond lengths (or angles).

Mol	Type	Chain	Res	Link	Bond lengths			Bond angles		
					Counts	RMSZ	$\# Z > 2$	Counts	RMSZ	$\# Z > 2$
2	1KG	A	501	-	38,38,38	1.89	8 (21%)	56,59,59	2.04	17 (30%)
2	1KG	B	501	-	38,38,38	1.85	11 (28%)	56,59,59	1.92	17 (30%)

In the following table, the Chirals column lists the number of chiral outliers, the number of chiral centers analysed, the number of these observed in the model and the number defined in the chemical component dictionary. Similar counts are reported in the Torsion and Rings columns. '-' means no outliers of that kind were identified.

Mol	Type	Chain	Res	Link	Chirals	Torsions	Rings
2	1KG	A	501	-	-	0/12/85/85	0/5/5/5
2	1KG	B	501	-	-	0/12/85/85	0/5/5/5

All (19) bond length outliers are listed below:

Mol	Chain	Res	Type	Atoms	Z	Observed(Å)	Ideal(Å)
2	A	501	1KG	O3-C27	-7.36	1.28	1.45
2	B	501	1KG	O3-C27	-6.56	1.30	1.45
2	B	501	1KG	C9-C15	-3.38	1.45	1.52
2	B	501	1KG	C14-C15	-2.64	1.45	1.51
2	A	501	1KG	C3-C21	-2.47	1.49	1.54
2	B	501	1KG	C11-C9	-2.44	1.49	1.54

Continued on next page...

Continued from previous page...

Mol	Chain	Res	Type	Atoms	Z	Observed(Å)	Ideal(Å)
2	A	501	1KG	C4-C19	-2.25	1.50	1.55
2	A	501	1KG	C17-C16	-2.05	1.45	1.50
2	A	501	1KG	C6-C7	2.03	1.57	1.53
2	B	501	1KG	C14-C13	2.12	1.59	1.52
2	A	501	1KG	C4-C3	2.12	1.60	1.56
2	B	501	1KG	C17-C18	2.16	1.56	1.53
2	B	501	1KG	C11-C12	2.22	1.58	1.53
2	B	501	1KG	C18-C8	2.26	1.58	1.53
2	A	501	1KG	C11-C9	2.30	1.58	1.54
2	B	501	1KG	C20-C21	2.36	1.58	1.52
2	B	501	1KG	C16-C15	2.79	1.39	1.33
2	B	501	1KG	C7-C8	2.84	1.58	1.53
2	A	501	1KG	C9-C8	4.39	1.64	1.56

All (34) bond angle outliers are listed below:

Mol	Chain	Res	Type	Atoms	Z	Observed(°)	Ideal(°)
2	A	501	1KG	O2-C22-C2	-4.78	98.94	104.88
2	B	501	1KG	C27-O3-C28	-4.77	103.51	116.85
2	B	501	1KG	O3-C27-C25	-4.13	98.14	108.89
2	A	501	1KG	O3-C27-C25	-4.11	98.19	108.89
2	A	501	1KG	C1-C2-C22	-3.95	107.68	114.73
2	A	501	1KG	C27-O3-C28	-3.85	106.08	116.85
2	B	501	1KG	C26-C25-C27	-3.70	96.41	110.01
2	B	501	1KG	C6-C4-C3	-3.60	109.08	115.56
2	A	501	1KG	C7-C6-C4	-3.45	106.67	112.84
2	B	501	1KG	C7-C6-C4	-3.41	106.75	112.84
2	A	501	1KG	C14-C15-C16	-3.39	114.81	120.57
2	B	501	1KG	C24-C23-C22	-3.29	106.44	113.52
2	B	501	1KG	C7-C8-C18	-3.13	107.20	111.74
2	A	501	1KG	C19-C18-C8	-3.05	105.04	109.06
2	A	501	1KG	C11-C9-C8	-3.04	104.73	108.64
2	A	501	1KG	C24-C23-C22	-2.92	107.24	113.52
2	A	501	1KG	C26-C25-C27	-2.85	99.55	110.01
2	B	501	1KG	C19-C18-C8	-2.77	105.41	109.06
2	B	501	1KG	C14-C15-C16	-2.56	116.22	120.57
2	A	501	1KG	C30-C29-C28	-2.29	102.33	114.17
2	B	501	1KG	C24-C25-C27	-2.26	100.45	110.34
2	B	501	1KG	C12-C13-C14	-2.18	106.44	110.32
2	B	501	1KG	C19-C20-C21	-2.01	97.99	102.34
2	B	501	1KG	C11-C9-C8	-2.01	106.07	108.64
2	A	501	1KG	C18-C17-C16	2.04	115.84	112.75

Continued on next page...

Continued from previous page...

Mol	Chain	Res	Type	Atoms	Z	Observed(°)	Ideal(°)
2	B	501	1KG	O2-C22-C23	2.30	112.23	109.23
2	A	501	1KG	C10-C9-C15	2.38	112.05	108.36
2	A	501	1KG	C5-C4-C6	3.20	116.00	110.54
2	A	501	1KG	O3-C28-C29	3.31	120.65	111.21
2	B	501	1KG	O3-C28-C29	3.46	121.07	111.21
2	B	501	1KG	C5-C4-C6	3.50	116.50	110.54
2	B	501	1KG	C14-C15-C9	3.55	121.60	116.43
2	A	501	1KG	C14-C15-C9	3.88	122.07	116.43
2	A	501	1KG	O2-C22-C23	4.74	115.41	109.23

There are no chirality outliers.

There are no torsion outliers.

There are no ring outliers.

2 monomers are involved in 4 short contacts:

Mol	Chain	Res	Type	Clashes	Symm-Clashes
2	A	501	1KG	2	0
2	B	501	1KG	2	0

5.7 Other polymers [i](#)

There are no such residues in this entry.

5.8 Polymer linkage issues [i](#)

There are no chain breaks in this entry.

6 Fit of model and data ⓘ

6.1 Protein, DNA and RNA chains ⓘ

In the following table, the column labelled ‘#RSRZ> 2’ contains the number (and percentage) of RSRZ outliers, followed by percent RSRZ outliers for the chain as percentile scores relative to all X-ray entries and entries of similar resolution. The OWAB column contains the minimum, median, 95th percentile and maximum values of the occupancy-weighted average B-factor per residue. The column labelled ‘Q< 0.9’ lists the number of (and percentage) of residues with an average occupancy less than 0.9.

Mol	Chain	Analysed	<RSRZ>	#RSRZ>2	OWAB(Å ²)	Q<0.9
1	A	436/436 (100%)	0.08	18 (4%) 41 44	15, 23, 45, 72	0
1	B	430/436 (98%)	-0.02	11 (2%) 59 64	14, 21, 40, 60	0
All	All	866/872 (99%)	0.03	29 (3%) 50 54	14, 22, 44, 72	0

All (29) RSRZ outliers are listed below:

Mol	Chain	Res	Type	RSRZ
1	B	281	ASN	5.4
1	A	281	ASN	5.3
1	B	235	GLY	5.2
1	A	19	SER	5.2
1	B	369	VAL	4.6
1	A	284	GLU	4.6
1	A	26	SER	4.3
1	B	284	GLU	4.3
1	B	326	LEU	4.2
1	B	144	HIS	3.6
1	A	329	PHE	3.4
1	A	20	PHE	3.3
1	A	144	HIS	3.0
1	A	118	LEU	2.9
1	A	381	ASP	2.9
1	A	413	ASP	2.8
1	B	19	SER	2.8
1	B	329	PHE	2.8
1	B	381	ASP	2.8
1	A	21	ASN	2.7
1	A	412	GLU	2.7
1	B	370	THR	2.5
1	A	283	LYS	2.3
1	A	341	GLU	2.3

Continued on next page...

Continued from previous page...

Mol	Chain	Res	Type	RSRZ
1	A	285	GLU	2.2
1	A	280	ALA	2.1
1	B	234	SER	2.0
1	A	261	GLU	2.0
1	A	28	SER	2.0

6.2 Non-standard residues in protein, DNA, RNA chains [i](#)

There are no non-standard protein/DNA/RNA residues in this entry.

6.3 Carbohydrates [i](#)

There are no carbohydrates in this entry.

6.4 Ligands [i](#)

In the following table, the Atoms column lists the number of modelled atoms in the group and the number defined in the chemical component dictionary. LLDF column lists the quality of electron density of the group with respect to its neighbouring residues in protein, DNA or RNA chains. The B-factors column lists the minimum, median, 95th percentile and maximum values of B factors of atoms in the group. The column labelled 'Q < 0.9' lists the number of atoms with occupancy less than 0.9.

Mol	Type	Chain	Res	Atoms	RSCC	RSR	LLDF	B-factors(Å ²)	Q<0.9
2	1KG	B	501	34/34	0.96	0.12	1.75	11,15,37,54	0
2	1KG	A	501	34/34	0.96	0.10	0.24	13,18,41,46	0

6.5 Other polymers [i](#)

There are no such residues in this entry.