



Full wwPDB X-ray Structure Validation Report ⓘ

Jan 31, 2016 – 08:14 PM GMT

PDB ID : 1JF7
Title : HUMAN PTP1B CATALYTIC DOMAIN COMPLEXED WITH PNU177836
Authors : Larsen, S.D.; Barf, T.; Liljebris, C.; May, P.D.; Ogg, D.; O'Sullivan, T.J.;
Palazuk, B.J.; Schostarez, H.J.; Stevens, F.C.; Bleasdale, J.E.
Deposited on : 2001-06-20
Resolution : 2.20 Å(reported)

This is a Full wwPDB X-ray Structure Validation Report for a publicly released PDB entry.
We welcome your comments at validation@mail.wwpdb.org
A user guide is available at
<http://wwpdb.org/validation/2016/XrayValidationReportHelp>
with specific help available everywhere you see the ⓘ symbol.

The following versions of software and data (see [references ⓘ](#)) were used in the production of this report:

MolProbity : 4.02b-467
Mogul : 1.7 (RC4), CSD as536be (2015)
Xtriage (Phenix) : 1.9-1692
EDS : rb-20026688
Percentile statistics : 20151230.v01 (using entries in the PDB archive December 30th 2015)
Refmac : 5.8.0135
CCP4 : 6.5.0
Ideal geometry (proteins) : Engh & Huber (2001)
Ideal geometry (DNA, RNA) : Parkinson et al. (1996)
Validation Pipeline (wwPDB-VP) : trunk26865

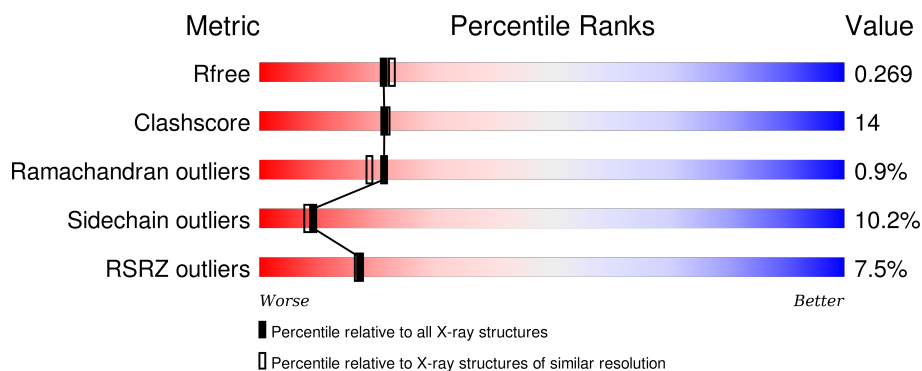
1 Overall quality at a glance ⓘ

The following experimental techniques were used to determine the structure:

X-RAY DIFFRACTION

The reported resolution of this entry is 2.20 Å.

Percentile scores (ranging between 0-100) for global validation metrics of the entry are shown in the following graphic. The table shows the number of entries on which the scores are based.



Metric	Whole archive (#Entries)	Similar resolution (#Entries, resolution range(Å))
R_{free}	91344	3774 (2.20-2.20)
Clashscore	102246	4477 (2.20-2.20)
Ramachandran outliers	100387	4404 (2.20-2.20)
Sidechain outliers	100360	4405 (2.20-2.20)
RSRZ outliers	91569	3781 (2.20-2.20)

The table below summarises the geometric issues observed across the polymeric chains and their fit to the electron density. The red, orange, yellow and green segments on the lower bar indicate the fraction of residues that contain outliers for ≥ 3 , 2, 1 and 0 types of geometric quality criteria. A grey segment represents the fraction of residues that are not modelled. The numeric value for each fraction is indicated below the corresponding segment, with a dot representing fractions $\leq 5\%$. The upper red bar (where present) indicates the fraction of residues that have poor fit to the electron density. The numeric value is given above the bar.

Mol	Chain	Length	Quality of chain
1	A	298	<div> <div>4%</div> <div>67%</div> <div>22%</div> <div>5%</div> <div>6%</div> </div>
1	B	298	<div> <div>10%</div> <div>63%</div> <div>26%</div> <div>5%</div> <div>6%</div> </div>

The following table lists non-polymeric compounds, carbohydrate monomers and non-standard residues in protein, DNA, RNA chains that are outliers for geometric or electron-density-fit criteria:

Mol	Type	Chain	Res	Chirality	Geometry	Clashes	Electron density
2	TBH	B	800	X	-	-	-

2 Entry composition [i](#)

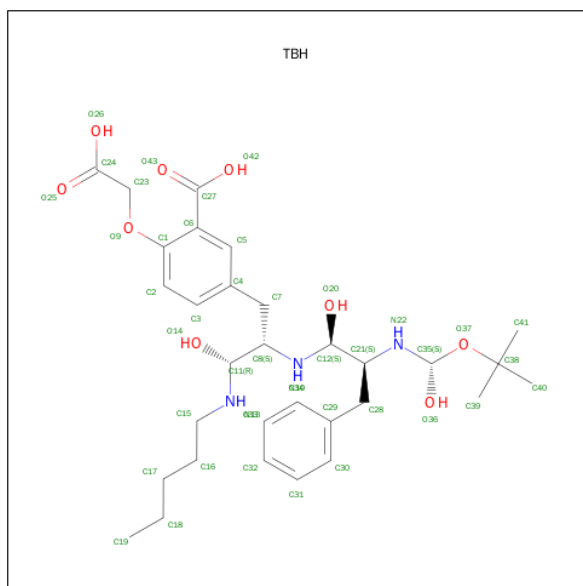
There are 3 unique types of molecules in this entry. The entry contains 4992 atoms, of which 0 are hydrogens and 0 are deuteriums.

In the tables below, the ZeroOcc column contains the number of atoms modelled with zero occupancy, the AltConf column contains the number of residues with at least one atom in alternate conformation and the Trace column contains the number of residues modelled with at most 2 atoms.

- Molecule 1 is a protein called PROTEIN-TYROSINE PHOSPHATASE 1B.

Mol	Chain	Residues	Atoms					ZeroOcc	AltConf	Trace
1	A	281	Total	C	N	O	S	0	0	0
			2296	1458	396	426	16			
1	B	281	Total	C	N	O	S	0	0	0
			2296	1458	396	426	16			

- Molecule 2 is 5-(2-{2-[(TERT-BUTOXY-HYDROXY-METHYL)-AMINO]-1-HYDROXY-3-PHENYL-PROPYLAMINO}-3-HYDROXY-3-PENTYLAMINO-PROPYL)-2-CARBOXY METHOXY-BENZOIC ACID (three-letter code: TBH) (formula: C₃₁H₄₇N₃O₉).

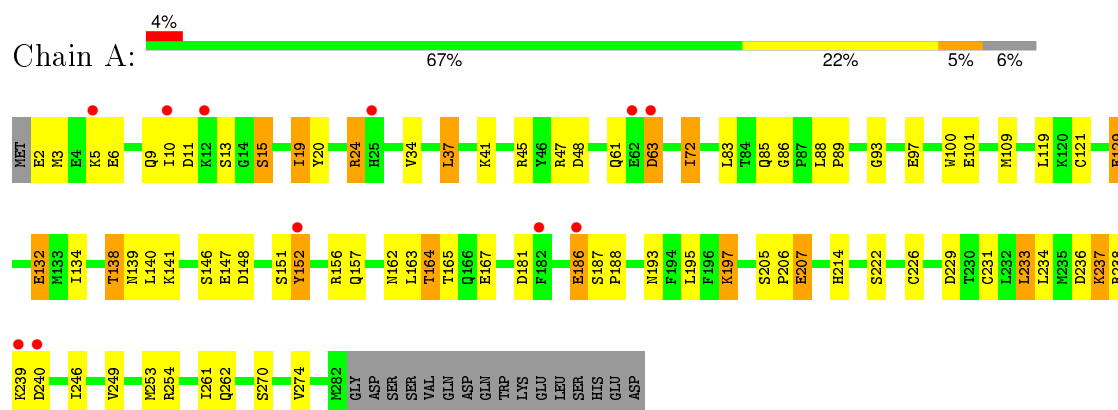


Mol	Chain	Residues	Atoms		ZeroOcc	AltConf
3	A	222	Total 222	O 222	0	0
3	B	135	Total 135	O 135	0	0

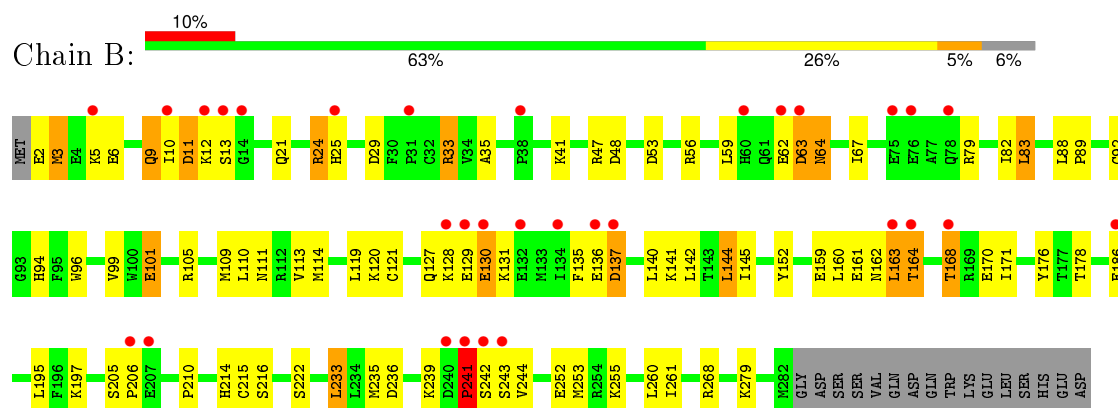
3 Residue-property plots

These plots are drawn for all protein, RNA and DNA chains in the entry. The first graphic for a chain summarises the proportions of errors displayed in the second graphic. The second graphic shows the sequence view annotated by issues in geometry and electron density. Residues are color-coded according to the number of geometric quality criteria for which they contain at least one outlier: green = 0, yellow = 1, orange = 2 and red = 3 or more. A red dot above a residue indicates a poor fit to the electron density ($RSRZ > 2$). Stretches of 2 or more consecutive residues without any outlier are shown as a green connector. Residues present in the sample, but not in the model, are shown in grey.

• Molecule 1: PROTEIN-TYROSINE PHOSPHATASE 1B



• Molecule 1: PROTEIN-TYROSINE PHOSPHATASE 1B



4 Data and refinement statistics

Property	Value	Source
Space group	P 1 21 1	Depositor
Cell constants a, b, c, α , β , γ	60.59Å 88.27Å 65.79Å 90.00° 107.38° 90.00°	Depositor
Resolution (Å)	15.00 – 2.20 14.99 – 2.20	Depositor EDS
% Data completeness (in resolution range)	95.5 (15.00-2.20) 95.5 (14.99-2.20)	Depositor EDS
R_{merge}	0.04	Depositor
R_{sym}	(Not available)	Depositor
$\langle I/\sigma(I) \rangle$ ¹	4.71 (at 2.20Å)	Xtriage
Refinement program	REFMAC	Depositor
R, R_{free}	0.203 , 0.268 0.208 , 0.269	Depositor DCC
R_{free} test set	1628 reflections (5.36%)	DCC
Wilson B-factor (Å ²)	32.8	Xtriage
Anisotropy	0.117	Xtriage
Bulk solvent k_{sol} (e/Å ³), B_{sol} (Å ²)	0.37 , 52.9	EDS
Estimated twinning fraction	No twinning to report.	Xtriage
L-test for twinning ²	$\langle L \rangle = 0.48$, $\langle L^2 \rangle = 0.32$	Xtriage
Outliers	0 of 32001 reflections	Xtriage
F_o, F_c correlation	0.94	EDS
Total number of atoms	4992	wwPDB-VP
Average B, all atoms (Å ²)	36.0	wwPDB-VP

Xtriage's analysis on translational NCS is as follows: *The largest off-origin peak in the Patterson function is 5.02% of the height of the origin peak. No significant pseudotranslation is detected.*

¹Intensities estimated from amplitudes.

²Theoretical values of $\langle |L| \rangle$, $\langle L^2 \rangle$ for acentric reflections are 0.5, 0.375 respectively for untwinned datasets, and 0.333, 0.2 for perfectly twinned datasets.

5 Model quality

5.1 Standard geometry

Bond lengths and bond angles in the following residue types are not validated in this section: TBH

The Z score for a bond length (or angle) is the number of standard deviations the observed value is removed from the expected value. A bond length (or angle) with $|Z| > 5$ is considered an outlier worth inspection. RMSZ is the root-mean-square of all Z scores of the bond lengths (or angles).

Mol	Chain	Bond lengths		Bond angles	
		RMSZ	$\# Z > 5$	RMSZ	$\# Z > 5$
1	A	0.82	0/2348	0.98	6/3164 (0.2%)
1	B	0.76	1/2348 (0.0%)	0.94	7/3164 (0.2%)
All	All	0.79	1/4696 (0.0%)	0.96	13/6328 (0.2%)

All (1) bond length outliers are listed below:

Mol	Chain	Res	Type	Atoms	Z	Observed(Å)	Ideal(Å)
1	B	101	GLU	CD-OE2	5.28	1.31	1.25

All (13) bond angle outliers are listed below:

Mol	Chain	Res	Type	Atoms	Z	Observed(°)	Ideal(°)
1	A	48	ASP	CB-CG-OD2	8.92	126.33	118.30
1	B	48	ASP	CB-CG-OD2	7.18	124.76	118.30
1	A	236	ASP	CB-CG-OD2	6.93	124.53	118.30
1	B	236	ASP	CB-CG-OD2	6.56	124.20	118.30
1	A	63	ASP	CB-CG-OD2	6.41	124.07	118.30
1	B	29	ASP	CB-CG-OD2	6.38	124.04	118.30
1	A	240	ASP	CB-CG-OD2	6.31	123.98	118.30
1	A	181	ASP	CB-CG-OD2	6.20	123.88	118.30
1	A	148	ASP	CB-CG-OD2	6.20	123.88	118.30
1	B	11	ASP	CB-CG-OD2	5.71	123.43	118.30
1	B	137	ASP	CB-CG-OD2	5.50	123.25	118.30
1	B	53	ASP	CB-CG-OD2	5.27	123.05	118.30
1	B	241	PRO	N-CD-CG	-5.15	95.48	103.20

There are no chirality outliers.

There are no planarity outliers.

5.2 Too-close contacts ⓘ

In the following table, the Non-H and H(model) columns list the number of non-hydrogen atoms and hydrogen atoms in the chain respectively. The H(added) column lists the number of hydrogen atoms added and optimized by MolProbity. The Clashes column lists the number of clashes within the asymmetric unit, whereas Symm-Clashes lists symmetry related clashes.

Mol	Chain	Non-H	H(model)	H(added)	Clashes	Symm-Clashes
1	A	2296	0	2273	59	0
1	B	2296	0	2273	72	0
2	B	43	0	44	5	0
3	A	222	0	0	8	0
3	B	135	0	0	12	0
All	All	4992	0	4590	131	0

The all-atom clashscore is defined as the number of clashes found per 1000 atoms (including hydrogen atoms). The all-atom clashscore for this structure is 14.

All (131) close contacts within the same asymmetric unit are listed below, sorted by their clash magnitude.

Atom-1	Atom-2	Interatomic distance (Å)	Clash overlap (Å)
1:B:24:ARG:HH22	2:B:800:TBH:H191	1.27	0.99
1:B:2:GLU:O	1:B:5:LYS:HG2	1.67	0.94
1:B:25:HIS:HB3	3:B:804:HOH:O	1.69	0.92
1:A:186:GLU:HG3	3:A:520:HOH:O	1.79	0.82
1:B:24:ARG:NH2	2:B:800:TBH:H191	1.96	0.81
1:B:162:ASN:OD1	1:B:164:THR:HG22	1.81	0.79
1:A:45:ARG:HD2	1:A:86:GLY:O	1.83	0.78
1:A:152:TYR:HE2	3:A:330:HOH:O	1.65	0.78
1:B:128:LYS:HB2	1:B:131:LYS:HE2	1.65	0.78
1:A:132:GLU:HG3	3:A:389:HOH:O	1.84	0.76
1:B:128:LYS:HB2	1:B:131:LYS:HB2	1.66	0.75
1:B:9:GLN:HG3	1:B:10:ILE:N	1.99	0.75
1:B:113:VAL:HG13	1:B:121:CYS:O	1.88	0.74
1:B:235:MET:HG2	1:B:244:VAL:CG2	2.18	0.74
1:B:235:MET:SD	1:B:242:SER:HB2	2.28	0.73
1:B:140:LEU:HD23	1:B:162:ASN:HA	1.73	0.71
1:B:242:SER:HA	3:B:841:HOH:O	1.91	0.70
1:B:235:MET:HG2	1:B:244:VAL:HG23	1.75	0.69
1:A:20:TYR:OH	1:A:24:ARG:CZ	2.43	0.67
1:A:139:ASN:ND2	1:A:164:THR:OG1	2.28	0.66
1:B:186:GLU:CD	1:B:186:GLU:H	1.97	0.66
1:A:10:ILE:HD12	1:A:19:ILE:HD11	1.77	0.66

Continued on next page...

Continued from previous page...

Atom-1	Atom-2	Interatomic distance (Å)	Clash overlap (Å)
1:A:13:SER:HB3	1:A:15:SER:OG	1.95	0.65
1:A:2:GLU:N	1:A:5:LYS:HZ2	1.95	0.65
1:A:139:ASN:ND2	1:A:164:THR:HG1	1.94	0.65
1:A:83:LEU:HD13	1:A:222:SER:HB3	1.77	0.65
1:B:9:GLN:HG3	1:B:10:ILE:H	1.62	0.64
1:B:67:ILE:HD12	3:B:834:HOH:O	1.97	0.64
1:A:238:ARG:O	1:A:239:LYS:HB2	1.99	0.63
1:B:63:ASP:OD1	1:B:63:ASP:N	2.27	0.63
1:A:162:ASN:OD1	1:A:164:THR:HB	2.00	0.62
1:B:92:CYS:HB3	1:B:135:PHE:HE1	1.63	0.62
1:B:92:CYS:HB3	1:B:135:PHE:CE1	2.35	0.62
1:B:141:LYS:CG	1:B:161:GLU:HB3	2.30	0.62
1:B:253:MET:HG2	1:B:260:LEU:CD1	2.30	0.61
1:A:262:GLN:NE2	3:A:378:HOH:O	2.30	0.60
1:B:56:ARG:HG3	3:B:830:HOH:O	2.00	0.60
1:B:163:LEU:O	1:B:164:THR:HB	2.02	0.60
1:A:186:GLU:OE1	1:A:187:SER:N	2.27	0.59
1:B:9:GLN:O	1:B:12:LYS:HG2	2.01	0.58
1:B:253:MET:HG2	1:B:260:LEU:HD12	1.84	0.58
1:B:128:LYS:O	1:B:129:GLU:C	2.42	0.58
1:A:140:LEU:HD23	1:A:162:ASN:HA	1.85	0.57
1:A:24:ARG:NH1	1:A:254:ARG:HH22	2.02	0.57
1:A:165:THR:C	1:A:167:GLU:H	2.08	0.57
1:B:141:LYS:HG2	1:B:161:GLU:HB3	1.88	0.56
1:B:21:GLN:HE21	1:B:25:HIS:CE1	2.24	0.56
1:A:6:GLU:O	1:A:10:ILE:HG12	2.06	0.56
1:A:24:ARG:HG2	3:A:467:HOH:O	2.07	0.55
1:A:2:GLU:HG3	1:A:3:MET:N	2.21	0.55
1:B:235:MET:HG2	1:B:244:VAL:HG21	1.87	0.54
1:A:45:ARG:NH1	1:A:88:LEU:HD23	2.22	0.54
1:A:24:ARG:HH11	1:A:254:ARG:HH22	1.56	0.54
1:A:45:ARG:H	1:A:85:GLN:HE22	1.54	0.54
1:B:128:LYS:HB3	1:B:130:GLU:OE1	2.08	0.54
1:B:64:ASN:ND2	3:B:856:HOH:O	2.40	0.53
1:B:24:ARG:HH22	2:B:800:TBH:C19	2.11	0.53
1:B:129:GLU:O	1:B:144:LEU:HB3	2.08	0.53
1:B:21:GLN:HE21	1:B:25:HIS:HE1	1.56	0.53
1:A:139:ASN:ND2	1:A:163:LEU:O	2.41	0.53
1:A:89:PRO:HD3	3:A:482:HOH:O	2.09	0.53
1:B:88:LEU:HB3	1:B:89:PRO:CD	2.39	0.53
1:A:238:ARG:O	1:A:239:LYS:CB	2.54	0.52

Continued on next page...

Continued from previous page...

Atom-1	Atom-2	Interatomic distance (Å)	Clash overlap (Å)
1:A:237:LYS:N	1:A:237:LYS:HD2	2.25	0.52
1:A:197:LYS:O	1:A:197:LYS:NZ	2.30	0.51
1:B:128:LYS:H	1:B:131:LYS:CB	2.24	0.51
1:A:165:THR:OG1	1:A:167:GLU:HB2	2.10	0.51
1:B:128:LYS:H	1:B:131:LYS:HB2	1.75	0.51
1:B:159:GLU:CG	1:B:168:THR:HG23	2.41	0.51
1:B:111:ASN:HD22	1:B:215:CYS:HA	1.75	0.51
1:B:235:MET:CE	1:B:242:SER:HB2	2.41	0.51
1:A:186:GLU:CD	1:A:187:SER:H	2.14	0.50
1:B:9:GLN:HA	1:B:12:LYS:HG2	1.94	0.50
1:B:82:ILE:HG13	1:B:210:PRO:HB2	1.94	0.50
1:A:45:ARG:H	1:A:85:GLN:NE2	2.09	0.50
1:A:147:GLU:OE2	1:A:156:ARG:NE	2.32	0.50
1:B:56:ARG:CG	3:B:830:HOH:O	2.56	0.49
1:A:165:THR:C	1:A:167:GLU:N	2.64	0.49
1:A:205:SER:OG	1:A:207:GLU:HB3	2.13	0.49
1:B:96:TRP:CZ2	1:B:142:LEU:HD21	2.48	0.49
1:A:72:ILE:N	1:A:72:ILE:CD1	2.76	0.49
1:B:94:HIS:CD2	3:B:847:HOH:O	2.65	0.49
1:A:132:GLU:CD	1:A:132:GLU:H	2.08	0.48
1:B:9:GLN:CG	1:B:10:ILE:N	2.74	0.48
1:B:142:LEU:HD13	1:B:160:LEU:HD13	1.94	0.48
1:A:146:SER:HB3	1:A:157:GLN:HB3	1.95	0.48
1:B:252:GLU:HA	1:B:255:LYS:HE2	1.96	0.48
1:A:134:ILE:CG1	1:A:141:LYS:HG3	2.44	0.47
1:B:145:ILE:HD11	1:B:159:GLU:HB2	1.95	0.47
1:A:249:VAL:O	1:A:253:MET:HG3	2.15	0.47
1:A:229:ASP:O	1:A:233:LEU:HD22	2.15	0.46
1:A:246:ILE:HD13	1:A:246:ILE:N	2.29	0.46
1:A:193:ASN:HD21	1:B:47:ARG:HH12	1.62	0.46
1:B:35:ALA:O	3:B:846:HOH:O	2.20	0.46
1:B:120:LYS:HA	1:B:120:LYS:HD2	1.80	0.46
1:A:2:GLU:CG	1:A:3:MET:N	2.79	0.46
1:A:231:CYS:SG	1:A:246:ILE:HD12	2.56	0.45
1:A:152:TYR:CE2	3:A:330:HOH:O	2.53	0.44
1:B:111:ASN:ND2	1:B:215:CYS:HA	2.32	0.44
1:A:93:GLY:O	1:A:138:THR:HG21	2.18	0.44
1:B:268:ARG:NH2	3:B:884:HOH:O	2.39	0.44
1:B:99:VAL:HG11	1:B:171:ILE:HD13	1.99	0.44
1:A:163:LEU:C	1:A:164:THR:HG1	2.18	0.43
1:A:100:TRP:CZ2	1:A:162:ASN:HB2	2.53	0.43

Continued on next page...

Continued from previous page...

Atom-1	Atom-2	Interatomic distance (Å)	Clash overlap (Å)
1:A:97:GLU:OE2	1:A:101:GLU:OE2	2.35	0.43
1:A:238:ARG:HB2	3:A:407:HOH:O	2.19	0.43
1:B:141:LYS:HE3	1:B:141:LYS:HB2	1.73	0.43
1:A:270:SER:O	1:A:274:VAL:HG23	2.18	0.43
1:B:105:ARG:HH12	1:B:170:GLU:CG	2.32	0.43
1:A:234:LEU:HD23	1:A:234:LEU:HA	1.92	0.43
1:A:83:LEU:HD21	1:A:226:CYS:SG	2.58	0.42
1:B:33:ARG:CD	3:B:878:HOH:O	2.68	0.42
1:A:34:VAL:HA	1:A:37:LEU:HD22	2.00	0.42
1:A:187:SER:OG	1:A:188:PRO:HD2	2.20	0.42
1:B:59:LEU:HD21	1:B:94:HIS:HB3	2.01	0.42
1:B:33:ARG:HD3	3:B:878:HOH:O	2.19	0.42
1:B:141:LYS:HG3	1:B:161:GLU:HB3	2.02	0.42
1:B:94:HIS:HD2	3:B:847:HOH:O	2.01	0.42
1:B:83:LEU:HD13	1:B:222:SER:HB3	2.02	0.41
1:B:205:SER:HA	1:B:206:PRO:HD3	1.82	0.41
1:A:109:MET:HG3	1:A:214:HIS:CE1	2.55	0.41
1:B:109:MET:HG3	1:B:214:HIS:CE1	2.55	0.41
1:A:129:GLU:H	1:A:129:GLU:HG2	1.01	0.41
1:A:205:SER:HA	1:A:206:PRO:HD3	1.90	0.41
1:B:79:ARG:CZ	1:B:233:LEU:HD21	2.50	0.41
1:B:3:MET:HA	1:B:6:GLU:HG3	2.02	0.41
2:B:800:TBH:H72	2:B:800:TBH:H131	1.72	0.41
1:B:216:SER:HB3	2:B:800:TBH:O42	2.22	0.40
1:B:241:PRO:HB2	1:B:242:SER:H	1.67	0.40
1:B:152:TYR:HB2	1:B:178:THR:OG1	2.22	0.40
1:B:176:TYR:OH	1:B:186:GLU:OE2	2.27	0.40

There are no symmetry-related clashes.

5.3 Torsion angles ⓘ

5.3.1 Protein backbone ⓘ

In the following table, the Percentiles column shows the percent Ramachandran outliers of the chain as a percentile score with respect to all X-ray entries followed by that with respect to entries of similar resolution.

The Analysed column shows the number of residues for which the backbone conformation was analysed, and the total number of residues.

Mol	Chain	Analysed	Favoured	Allowed	Outliers	Percentiles	
1	A	279/298 (94%)	265 (95%)	12 (4%)	2 (1%)	26	25
1	B	279/298 (94%)	262 (94%)	14 (5%)	3 (1%)	17	14
All	All	558/596 (94%)	527 (94%)	26 (5%)	5 (1%)	21	19

All (5) Ramachandran outliers are listed below:

Mol	Chain	Res	Type
1	B	164	THR
1	B	241	PRO
1	A	164	THR
1	B	261	ILE
1	A	261	ILE

5.3.2 Protein sidechains ⓘ

In the following table, the Percentiles column shows the percent sidechain outliers of the chain as a percentile score with respect to all X-ray entries followed by that with respect to entries of similar resolution.

The Analysed column shows the number of residues for which the sidechain conformation was analysed, and the total number of residues.

Mol	Chain	Analysed	Rotameric	Outliers	Percentiles	
1	A	255/271 (94%)	231 (91%)	24 (9%)	11	10
1	B	255/271 (94%)	227 (89%)	28 (11%)	8	7
All	All	510/542 (94%)	458 (90%)	52 (10%)	9	8

All (52) residues with a non-rotameric sidechain are listed below:

Mol	Chain	Res	Type
1	A	9	GLN
1	A	11	ASP
1	A	15	SER
1	A	19	ILE
1	A	24	ARG
1	A	37	LEU
1	A	41	LYS
1	A	47	ARG
1	A	61	GLN
1	A	63	ASP
1	A	72	ILE

Continued on next page...

Continued from previous page...

Mol	Chain	Res	Type
1	A	119	LEU
1	A	121	CYS
1	A	129	GLU
1	A	132	GLU
1	A	138	THR
1	A	151	SER
1	A	152	TYR
1	A	186	GLU
1	A	195	LEU
1	A	197	LYS
1	A	207	GLU
1	A	233	LEU
1	A	237	LYS
1	B	3	MET
1	B	9	GLN
1	B	11	ASP
1	B	13	SER
1	B	24	ARG
1	B	33	ARG
1	B	41	LYS
1	B	62	GLU
1	B	63	ASP
1	B	64	ASN
1	B	83	LEU
1	B	101	GLU
1	B	110	LEU
1	B	114	MET
1	B	119	LEU
1	B	127	GLN
1	B	130	GLU
1	B	136	GLU
1	B	137	ASP
1	B	144	LEU
1	B	163	LEU
1	B	168	THR
1	B	195	LEU
1	B	197	LYS
1	B	233	LEU
1	B	239	LYS
1	B	243	SER
1	B	279	LYS

Some sidechains can be flipped to improve hydrogen bonding and reduce clashes. All (14) such

sidechains are listed below:

Mol	Chain	Res	Type
1	A	85	GLN
1	A	111	ASN
1	A	139	ASN
1	A	166	GLN
1	A	193	ASN
1	B	9	GLN
1	B	25	HIS
1	B	40	ASN
1	B	60	HIS
1	B	64	ASN
1	B	94	HIS
1	B	111	ASN
1	B	123	GLN
1	B	157	GLN

5.3.3 RNA [i](#)

There are no RNA molecules in this entry.

5.4 Non-standard residues in protein, DNA, RNA chains [i](#)

There are no non-standard protein/DNA/RNA residues in this entry.

5.5 Carbohydrates [i](#)

There are no carbohydrates in this entry.

5.6 Ligand geometry [i](#)

1 ligand is modelled in this entry.

In the following table, the Counts columns list the number of bonds (or angles) for which Mogul statistics could be retrieved, the number of bonds (or angles) that are observed in the model and the number of bonds (or angles) that are defined in the chemical component dictionary. The Link column lists molecule types, if any, to which the group is linked. The Z score for a bond length (or angle) is the number of standard deviations the observed value is removed from the expected value. A bond length (or angle) with $|Z| > 2$ is considered an outlier worth inspection. RMSZ is the root-mean-square of all Z scores of the bond lengths (or angles).

Mol	Type	Chain	Res	Link	Bond lengths			Bond angles		
					Counts	RMSZ	# Z > 2	Counts	RMSZ	# Z > 2
2	TBH	B	800	-	35,44,44	1.85	5 (14%)	35,59,59	1.73	6 (17%)

In the following table, the Chirals column lists the number of chiral outliers, the number of chiral centers analysed, the number of these observed in the model and the number defined in the chemical component dictionary. Similar counts are reported in the Torsion and Rings columns. '-' means no outliers of that kind were identified.

Mol	Type	Chain	Res	Link	Chirals	Torsions	Rings
2	TBH	B	800	-	1/1/8/11	0/32/44/44	0/2/2/2

All (5) bond length outliers are listed below:

Mol	Chain	Res	Type	Atoms	Z	Observed(Å)	Ideal(Å)
2	B	800	TBH	C15-N13	-7.51	1.31	1.47
2	B	800	TBH	C16-C15	-3.81	1.35	1.51
2	B	800	TBH	C5-C6	-2.29	1.36	1.39
2	B	800	TBH	C7-C8	-2.14	1.49	1.53
2	B	800	TBH	C6-C1	4.43	1.48	1.40

All (6) bond angle outliers are listed below:

Mol	Chain	Res	Type	Atoms	Z	Observed(°)	Ideal(°)
2	B	800	TBH	C2-C1-C6	-2.15	117.22	121.19
2	B	800	TBH	C15-N13-C11	2.09	126.69	116.83
2	B	800	TBH	O9-C23-C24	2.25	112.39	108.01
2	B	800	TBH	C5-C6-C1	2.92	121.55	118.00
2	B	800	TBH	O9-C1-C6	2.95	120.38	115.96
2	B	800	TBH	C4-C7-C8	7.44	125.32	113.48

All (1) chirality outliers are listed below:

Mol	Chain	Res	Type	Atom
2	B	800	TBH	C35

There are no torsion outliers.

There are no ring outliers.

1 monomer is involved in 5 short contacts:

Mol	Chain	Res	Type	Clashes	Symm-Clashes
2	B	800	TBH	5	0

5.7 Other polymers

There are no such residues in this entry.

5.8 Polymer linkage issues

There are no chain breaks in this entry.

6 Fit of model and data ⓘ

6.1 Protein, DNA and RNA chains ⓘ

In the following table, the column labelled ‘#RSRZ> 2’ contains the number (and percentage) of RSRZ outliers, followed by percent RSRZ outliers for the chain as percentile scores relative to all X-ray entries and entries of similar resolution. The OWAB column contains the minimum, median, 95th percentile and maximum values of the occupancy-weighted average B-factor per residue. The column labelled ‘Q< 0.9’ lists the number of (and percentage) of residues with an average occupancy less than 0.9.

Mol	Chain	Analysed	<RSRZ>	#RSRZ>2	OWAB(Å ²)	Q<0.9
1	A	281/298 (94%)	0.04	11 (3%) 43 42	19, 31, 52, 72	0
1	B	281/298 (94%)	0.48	31 (11%) 7 7	21, 38, 62, 76	0
All	All	562/596 (94%)	0.26	42 (7%) 17 17	19, 34, 58, 76	0

All (42) RSRZ outliers are listed below:

Mol	Chain	Res	Type	RSRZ
1	B	129	GLU	6.6
1	B	243	SER	5.9
1	B	130	GLU	5.8
1	B	63	ASP	5.6
1	B	25	HIS	4.4
1	B	242	SER	4.3
1	B	14	GLY	4.2
1	A	5	LYS	4.1
1	B	5	LYS	3.8
1	B	38	PRO	3.7
1	A	152	TYR	3.7
1	A	12	LYS	3.7
1	B	12	LYS	3.6
1	B	137	ASP	3.4
1	B	78	GLN	3.3
1	B	163	LEU	3.3
1	A	239	LYS	3.2
1	B	136	GLU	3.1
1	A	186	GLU	3.1
1	A	62	GLU	3.0
1	B	164	THR	3.0
1	B	134	ILE	3.0
1	B	241	PRO	2.9
1	B	207	GLU	2.9

Continued on next page...

Continued from previous page...

Mol	Chain	Res	Type	RSRZ
1	B	10	ILE	2.8
1	B	206	PRO	2.7
1	B	62	GLU	2.7
1	B	240	ASP	2.7
1	B	128	LYS	2.6
1	A	240	ASP	2.6
1	A	25	HIS	2.5
1	A	10	ILE	2.5
1	B	168	THR	2.5
1	B	76	GLU	2.5
1	A	63	ASP	2.4
1	A	182	PHE	2.4
1	B	186	GLU	2.4
1	B	13	SER	2.3
1	B	75	GLU	2.2
1	B	60	HIS	2.1
1	B	132	GLU	2.1
1	B	31	PRO	2.0

6.2 Non-standard residues in protein, DNA, RNA chains [i](#)

There are no non-standard protein/DNA/RNA residues in this entry.

6.3 Carbohydrates [i](#)

There are no carbohydrates in this entry.

6.4 Ligands [i](#)

In the following table, the Atoms column lists the number of modelled atoms in the group and the number defined in the chemical component dictionary. LLDF column lists the quality of electron density of the group with respect to its neighbouring residues in protein, DNA or RNA chains. The B-factors column lists the minimum, median, 95th percentile and maximum values of B factors of atoms in the group. The column labelled 'Q< 0.9' lists the number of atoms with occupancy less than 0.9.

Mol	Type	Chain	Res	Atoms	RSCC	RSR	LLDF	B-factors(Å ²)	Q<0.9
2	TBH	B	800	43/43	0.90	0.15	0.77	27,39,53,55	0

6.5 Other polymers

There are no such residues in this entry.