



Full wwPDB X-ray Structure Validation Report ⓘ

Feb 1, 2016 – 02:58 AM GMT

PDB ID : 2JJ3
Title : ESTROGEN RECEPTOR BETA LIGAND BINDING DOMAIN IN COMPLEX WITH A BENZOPYRAN AGONIST
Authors : Norman, B.H.; Richardson, T.I.; Dodge, J.A.; Pfeifer, L.A.; Durst, G.L.; Wang, Y.; Durbin, J.D.; Krishnan, V.; Dinn, S.R.; Liu, S.; Reilly, J.E.; Ryter, K.T.
Deposited on : 2007-07-03
Resolution : 2.28 Å(reported)

This is a Full wwPDB X-ray Structure Validation Report for a publicly released PDB entry.
We welcome your comments at validation@mail.wwpdb.org
A user guide is available at
<http://wwpdb.org/validation/2016/XrayValidationReportHelp>
with specific help available everywhere you see the ⓘ symbol.

The following versions of software and data (see [references ⓘ](#)) were used in the production of this report:

MolProbity : 4.02b-467
Mogul : 1.7 (RC4), CSD as536be (2015)
Xtriage (Phenix) : 1.9-1692
EDS : rb-20026688
Percentile statistics : 20151230.v01 (using entries in the PDB archive December 30th 2015)
Refmac : 5.8.0135
CCP4 : 6.5.0
Ideal geometry (proteins) : Engh & Huber (2001)
Ideal geometry (DNA, RNA) : Parkinson et al. (1996)
Validation Pipeline (wwPDB-VP) : trunk26865

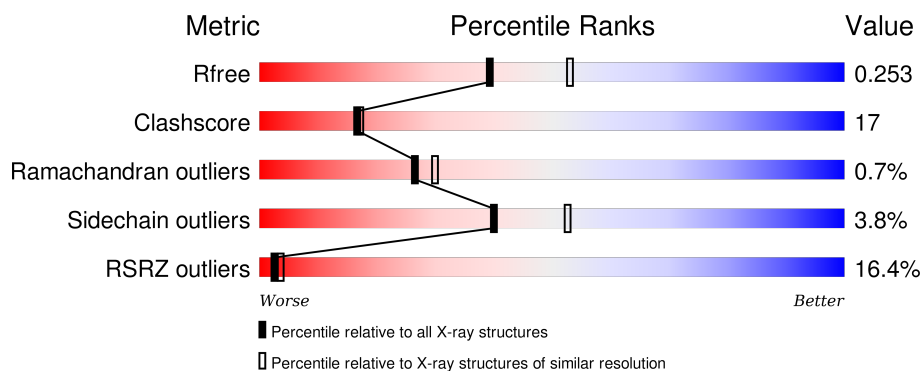
1 Overall quality at a glance

The following experimental techniques were used to determine the structure:

X-RAY DIFFRACTION

The reported resolution of this entry is 2.28 Å.

Percentile scores (ranging between 0-100) for global validation metrics of the entry are shown in the following graphic. The table shows the number of entries on which the scores are based.



Metric	Whole archive (#Entries)	Similar resolution (#Entries, resolution range(Å))
R_{free}	91344	5193 (2.30-2.26)
Clashscore	102246	5929 (2.30-2.26)
Ramachandran outliers	100387	5851 (2.30-2.26)
Sidechain outliers	100360	5850 (2.30-2.26)
RSRZ outliers	91569	5204 (2.30-2.26)

The table below summarises the geometric issues observed across the polymeric chains and their fit to the electron density. The red, orange, yellow and green segments on the lower bar indicate the fraction of residues that contain outliers for ≥ 3 , 2, 1 and 0 types of geometric quality criteria. A grey segment represents the fraction of residues that are not modelled. The numeric value for each fraction is indicated below the corresponding segment, with a dot representing fractions $\leq 5\%$. The upper red bar (where present) indicates the fraction of residues that have poor fit to the electron density. The numeric value is given above the bar.

Mol	Chain	Length	Quality of chain
1	A	257	
1	B	257	

The following table lists non-polymeric compounds, carbohydrate monomers and non-standard residues in protein, DNA, RNA chains that are outliers for geometric or electron-density-fit criteria:

Mol	Type	Chain	Res	Chirality	Geometry	Clashes	Electron density
2	JJ3	A	1499	-	-	X	-
2	JJ3	B	1501	-	-	X	-

2 Entry composition [i](#)

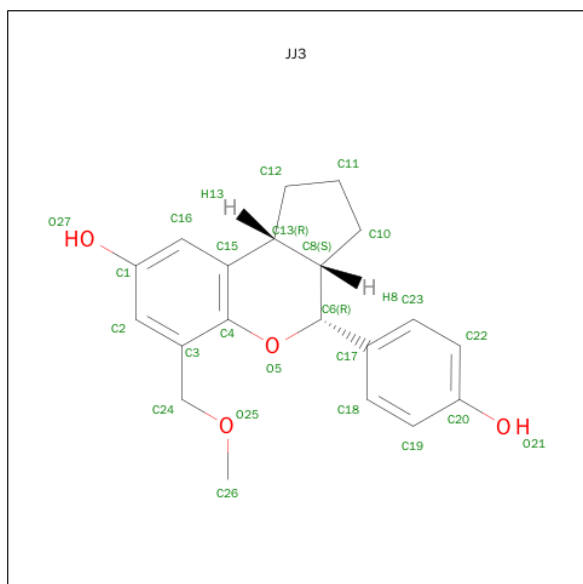
There are 3 unique types of molecules in this entry. The entry contains 3630 atoms, of which 0 are hydrogens and 0 are deuteriums.

In the tables below, the ZeroOcc column contains the number of atoms modelled with zero occupancy, the AltConf column contains the number of residues with at least one atom in alternate conformation and the Trace column contains the number of residues modelled with at most 2 atoms.

- Molecule 1 is a protein called ESTROGEN RECEPTOR BETA.

Mol	Chain	Residues	Atoms					ZeroOcc	AltConf	Trace
1	A	224	Total	C	N	O	S	0	0	1
			1747	1127	292	309	19			
1	B	227	Total	C	N	O	S	0	0	1
			1773	1145	295	314	19			

- Molecule 2 is (3AS,4R,9BR)-4-(4-HYDROXYPHENYL)-6-(METHOXYMETHYL)-1,2,3,3A,4,9B-HEXAHYDROCYCLOPENTA[C]CHROMEN-8-OL (three-letter code: JJ3) (formula: C₂₀H₂₂O₄).



Mol	Chain	Residues	Atoms			ZeroOcc	AltConf
2	A	1	Total	C	O	0	0
			24	20	4		
2	B	1	Total	C	O	0	0
			24	20	4		

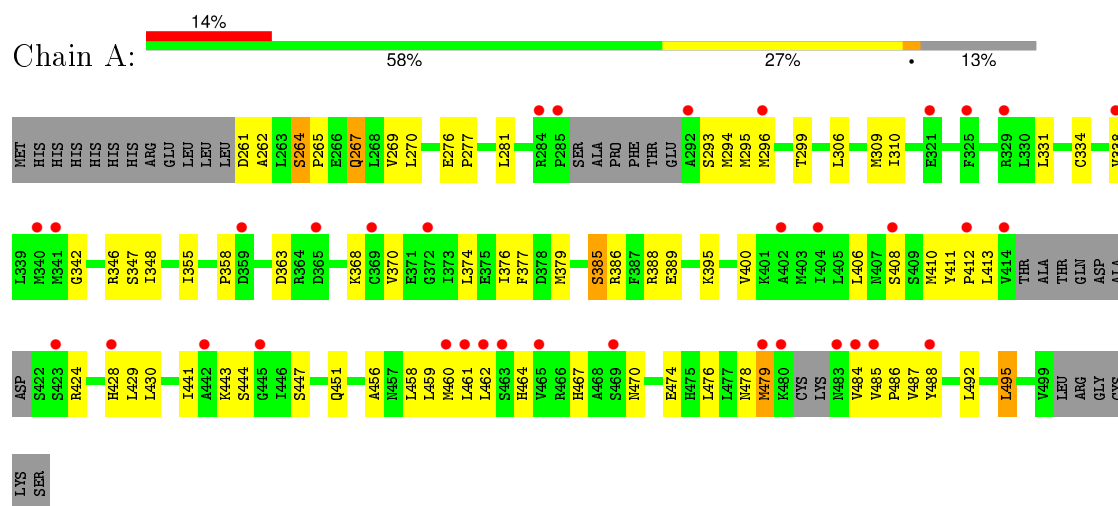
- Molecule 3 is water.

Mol	Chain	Residues	Atoms		ZeroOcc	AltConf
3	A	29	Total 29	O 29	0	0
3	B	33	Total 33	O 33	0	0

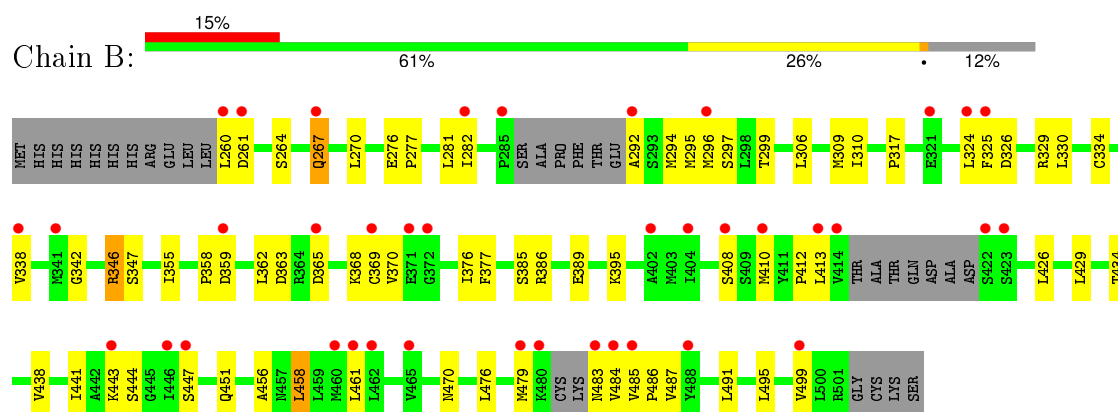
3 Residue-property plots

These plots are drawn for all protein, RNA and DNA chains in the entry. The first graphic for a chain summarises the proportions of errors displayed in the second graphic. The second graphic shows the sequence view annotated by issues in geometry and electron density. Residues are color-coded according to the number of geometric quality criteria for which they contain at least one outlier: green = 0, yellow = 1, orange = 2 and red = 3 or more. A red dot above a residue indicates a poor fit to the electron density ($\text{RSRZ} > 2$). Stretches of 2 or more consecutive residues without any outlier are shown as a green connector. Residues present in the sample, but not in the model, are shown in grey.

• Molecule 1: ESTROGEN RECEPTOR BETA



• Molecule 1: ESTROGEN RECEPTOR BETA



4 Data and refinement statistics

Property	Value	Source
Space group	P 61	Depositor
Cell constants a, b, c, α , β , γ	63.41Å 63.41Å 248.91Å 90.00° 90.00° 120.00°	Depositor
Resolution (Å)	33.10 – 2.28 31.45 – 2.28	Depositor EDS
% Data completeness (in resolution range)	(Not available) (33.10-2.28) 97.8 (31.45-2.28)	Depositor EDS
R_{merge}	0.09	Depositor
R_{sym}	(Not available)	Depositor
$\langle I/\sigma(I) \rangle$ ¹	1.48 (at 2.29Å)	Xtriage
Refinement program	CNX 2002	Depositor
R, R_{free}	0.235 , 0.255 0.231 , 0.253	Depositor DCC
R_{free} test set	1012 reflections (4.20%)	DCC
Wilson B-factor (Å ²)	41.8	Xtriage
Anisotropy	0.118	Xtriage
Bulk solvent k_{sol} (e/Å ³), B_{sol} (Å ²)	0.35 , 37.8	EDS
Estimated twinning fraction	0.488 for h,-h-k,-l	Xtriage
L-test for twinning ²	$\langle L \rangle = 0.51$, $\langle L^2 \rangle = 0.35$	Xtriage
Outliers	0 of 25113 reflections	Xtriage
F_o, F_c correlation	0.94	EDS
Total number of atoms	3630	wwPDB-VP
Average B, all atoms (Å ²)	48.0	wwPDB-VP

Xtriage's analysis on translational NCS is as follows: *The largest off-origin peak in the Patterson function is 7.75% of the height of the origin peak. No significant pseudotranslation is detected.*

¹Intensities estimated from amplitudes.

²Theoretical values of $\langle |L| \rangle$, $\langle L^2 \rangle$ for acentric reflections are 0.5, 0.375 respectively for untwinned datasets, and 0.333, 0.2 for perfectly twinned datasets.

5 Model quality

5.1 Standard geometry

Bond lengths and bond angles in the following residue types are not validated in this section: JJ3

The Z score for a bond length (or angle) is the number of standard deviations the observed value is removed from the expected value. A bond length (or angle) with $|Z| > 5$ is considered an outlier worth inspection. RMSZ is the root-mean-square of all Z scores of the bond lengths (or angles).

Mol	Chain	Bond lengths		Bond angles	
		RMSZ	# Z >5	RMSZ	# Z >5
1	A	0.36	0/1777	0.57	0/2401
1	B	0.35	0/1803	0.59	0/2437
All	All	0.36	0/3580	0.58	0/4838

There are no bond length outliers.

There are no bond angle outliers.

There are no chirality outliers.

There are no planarity outliers.

5.2 Too-close contacts

In the following table, the Non-H and H(model) columns list the number of non-hydrogen atoms and hydrogen atoms in the chain respectively. The H(added) column lists the number of hydrogen atoms added and optimized by MolProbity. The Clashes column lists the number of clashes within the asymmetric unit, whereas Symm-Clashes lists symmetry related clashes.

Mol	Chain	Non-H	H(model)	H(added)	Clashes	Symm-Clashes
1	A	1747	0	1809	63	1
1	B	1773	0	1842	64	1
2	A	24	0	21	9	0
2	B	24	0	21	10	0
3	A	29	0	0	0	0
3	B	33	0	0	0	0
All	All	3630	0	3693	120	1

The all-atom clashscore is defined as the number of clashes found per 1000 atoms (including hydrogen atoms). The all-atom clashscore for this structure is 17.

All (120) close contacts within the same asymmetric unit are listed below, sorted by their clash

magnitude.

Atom-1	Atom-2	Interatomic distance (Å)	Clash overlap (Å)
1:B:299:THR:HA	2:B:1501:JJ3:H262	1.26	1.17
1:A:299:THR:HA	2:A:1499:JJ3:H262	1.26	1.11
1:A:470:ASN:HD22	1:B:470:ASN:ND2	1.47	1.10
1:A:470:ASN:ND2	1:B:470:ASN:HD22	1.47	1.10
1:B:487:VAL:HG21	2:B:1501:JJ3:H261	1.35	1.06
1:B:487:VAL:HG21	2:B:1501:JJ3:C26	1.91	0.99
1:A:487:VAL:HG21	2:A:1499:JJ3:H261	1.47	0.94
1:A:487:VAL:HG21	2:A:1499:JJ3:C26	1.99	0.92
1:A:386:ARG:HB2	1:B:410:MET:HE1	1.53	0.89
1:A:386:ARG:HB2	1:B:410:MET:CE	2.10	0.80
1:A:269:VAL:HG11	1:A:395:LYS:HG2	1.63	0.79
1:B:386:ARG:HG2	1:B:461:LEU:HD21	1.65	0.79
1:A:441:ILE:O	1:A:444:SER:HB3	1.88	0.74
1:A:476:LEU:HD12	1:A:479:MET:HE2	1.69	0.72
1:A:386:ARG:HG2	1:A:461:LEU:HD21	1.71	0.71
1:A:309:MET:HE1	1:A:338:VAL:HB	1.74	0.70
1:B:479:MET:HE1	1:B:484:VAL:HG11	1.74	0.69
1:A:395:LYS:NZ	1:A:443:LYS:HE3	2.09	0.68
1:A:347:SER:HA	1:A:355:ILE:HD13	1.75	0.67
1:B:441:ILE:O	1:B:444:SER:HB3	1.96	0.65
1:B:299:THR:HA	2:B:1501:JJ3:C26	2.17	0.65
1:B:324:LEU:HD21	1:B:499:VAL:HA	1.78	0.64
1:B:325:PHE:HE1	1:B:329:ARG:NH1	1.96	0.64
1:A:495:LEU:N	1:A:495:LEU:HD23	2.12	0.63
1:B:295:MET:HG2	1:B:370:VAL:HG21	1.81	0.62
1:B:309:MET:HE2	1:B:338:VAL:HB	1.81	0.62
1:B:491:LEU:O	1:B:495:LEU:HG	1.99	0.62
1:B:347:SER:HA	1:B:355:ILE:HD13	1.83	0.60
1:A:299:THR:HA	2:A:1499:JJ3:C26	2.18	0.60
1:A:470:ASN:HD22	1:B:470:ASN:HD22	0.73	0.60
1:B:294:MET:CE	1:B:362:LEU:HD13	2.32	0.59
1:A:294:MET:HE1	1:A:377:PHE:CZ	2.38	0.59
1:B:447:SER:O	1:B:451:GLN:HG3	2.03	0.58
1:B:395:LYS:HE2	1:B:443:LYS:HE3	1.85	0.58
1:B:385:SER:O	1:B:389:GLU:HG2	2.04	0.57
1:B:282:ILE:HD11	1:B:297:SER:HA	1.86	0.57
1:A:476:LEU:HD12	1:A:479:MET:CE	2.35	0.57
1:B:299:THR:HG22	2:B:1501:JJ3:H263	1.87	0.56
1:A:385:SER:O	1:A:389:GLU:HG2	2.06	0.56
1:A:395:LYS:HZ3	1:A:443:LYS:HE3	1.72	0.54
1:B:355:ILE:HD12	1:B:355:ILE:N	2.21	0.54

Continued on next page...

Continued from previous page...

Atom-1	Atom-2	Interatomic distance (Å)	Clash overlap (Å)
1:A:376:ILE:HG21	2:A:1499:JJ3:H122	1.89	0.54
1:B:260:LEU:HG	1:B:261:ASP:N	2.23	0.53
1:A:262:ALA:HA	1:A:267:GLN:HG2	1.91	0.52
1:A:261:ASP:O	1:A:264:SER:HB3	2.09	0.52
1:A:281:LEU:CD2	1:A:358:PRO:HB2	2.40	0.52
1:B:294:MET:HE1	1:B:377:PHE:CZ	2.44	0.52
1:B:292:ALA:O	1:B:296:MET:HB2	2.10	0.52
1:B:296:MET:CE	1:B:485:VAL:HG23	2.40	0.51
1:B:294:MET:HE3	1:B:362:LEU:HD13	1.92	0.51
1:B:299:THR:HG22	2:B:1501:JJ3:H242	1.93	0.51
1:A:395:LYS:HZ2	1:A:443:LYS:HE3	1.76	0.51
1:B:376:ILE:HG21	2:B:1501:JJ3:H122	1.92	0.51
1:A:295:MET:O	1:A:299:THR:HG23	2.11	0.51
1:B:317:PRO:O	1:B:429:LEU:HD21	2.11	0.50
1:B:306:LEU:O	1:B:310:ILE:HG12	2.12	0.49
1:A:355:ILE:N	1:A:355:ILE:HD12	2.27	0.49
1:B:281:LEU:CD2	1:B:358:PRO:HB2	2.43	0.49
1:A:295:MET:HG2	1:A:370:VAL:HG21	1.92	0.49
1:A:299:THR:HG22	2:A:1499:JJ3:H242	1.95	0.49
1:A:334:CYS:HB3	1:A:408:SER:CB	2.44	0.48
1:B:295:MET:O	1:B:299:THR:HG23	2.13	0.48
1:B:329:ARG:NH2	1:B:412:PRO:HA	2.29	0.48
1:B:294:MET:HE2	1:B:362:LEU:HD13	1.96	0.48
1:B:334:CYS:HB3	1:B:408:SER:HB3	1.96	0.48
1:A:411:TYR:C	1:A:413:LEU:H	2.16	0.48
1:A:267:GLN:HA	1:A:267:GLN:HE21	1.79	0.48
1:B:485:VAL:HG13	1:B:486:PRO:HD2	1.97	0.47
1:B:325:PHE:HE1	1:B:329:ARG:HH11	1.62	0.47
1:A:400:VAL:HG13	1:A:462:LEU:HD21	1.97	0.47
1:A:342:GLY:O	1:A:346:ARG:HG2	2.15	0.47
1:A:293:SER:HB3	1:A:296:MET:CB	2.45	0.46
1:B:334:CYS:HB3	1:B:408:SER:CB	2.46	0.46
1:A:488:TYR:CE2	1:A:492:LEU:HD11	2.50	0.46
1:A:456:ALA:O	1:A:460:MET:HG3	2.16	0.46
1:A:461:LEU:HD23	1:A:461:LEU:HA	1.79	0.46
1:A:379:MET:CE	1:A:467:HIS:CD2	2.99	0.45
1:B:434:THR:O	1:B:438:VAL:HG23	2.16	0.45
1:A:476:LEU:HD13	2:A:1499:JJ3:C2	2.47	0.45
1:B:276:GLU:HA	1:B:277:PRO:HD3	1.83	0.45
1:A:476:LEU:HD13	2:A:1499:JJ3:H2	1.99	0.45
1:A:406:LEU:HB2	1:A:430:LEU:HD13	1.99	0.45

Continued on next page...

Continued from previous page...

Atom-1	Atom-2	Interatomic distance (Å)	Clash overlap (Å)
1:B:413:LEU:HD13	1:B:426:LEU:HD23	1.98	0.45
1:A:495:LEU:CD2	1:A:495:LEU:N	2.80	0.44
1:B:296:MET:HE3	1:B:485:VAL:HG23	1.99	0.44
1:A:447:SER:O	1:A:451:GLN:HG3	2.17	0.44
1:B:342:GLY:O	1:B:346:ARG:HG2	2.17	0.44
1:A:424:ARG:O	1:A:428:HIS:CD2	2.71	0.44
1:B:461:LEU:HD23	1:B:461:LEU:HA	1.75	0.43
1:B:326:ASP:O	1:B:330:LEU:HG	2.18	0.43
1:A:276:GLU:HA	1:A:277:PRO:HD3	1.84	0.43
1:A:294:MET:CE	1:A:377:PHE:CZ	3.01	0.43
1:B:264:SER:HB2	1:B:267:GLN:CG	2.49	0.43
1:A:485:VAL:HG13	1:A:486:PRO:HD2	2.00	0.43
1:B:299:THR:CG2	2:B:1501:JJ3:H242	2.49	0.42
1:A:270:LEU:HD23	1:A:270:LEU:HA	1.91	0.42
1:A:464:HIS:CD2	1:B:410:MET:HG2	2.55	0.42
1:A:306:LEU:HD23	1:A:306:LEU:HA	1.80	0.42
1:B:458:LEU:HA	1:B:458:LEU:HD12	1.75	0.42
1:A:310:ILE:HD12	1:A:331:LEU:HD13	2.00	0.42
1:B:365:ASP:O	1:B:368:LYS:HG3	2.20	0.42
1:B:267:GLN:HG2	1:B:267:GLN:H	1.50	0.42
1:A:299:THR:HG22	2:A:1499:JJ3:H263	2.01	0.41
1:B:386:ARG:HG3	1:B:461:LEU:HD11	2.03	0.41
1:B:326:ASP:OD1	1:B:412:PRO:HB3	2.21	0.41
1:B:495:LEU:HD23	1:B:495:LEU:HA	1.84	0.41
1:A:379:MET:HE3	1:A:467:HIS:CD2	2.56	0.41
1:A:368:LYS:HG2	1:A:374:LEU:HD22	2.01	0.41
1:B:476:LEU:HD13	2:B:1501:JJ3:C2	2.51	0.41
1:A:293:SER:HB3	1:A:296:MET:HB2	2.03	0.41
1:A:459:LEU:CD1	1:B:456:ALA:HA	2.50	0.41
1:A:296:MET:SD	1:A:484:VAL:HA	2.60	0.41
1:A:379:MET:HE1	1:A:467:HIS:CD2	2.56	0.41
1:A:474:GLU:HG2	1:A:478:ASN:ND2	2.36	0.41
1:A:334:CYS:HB3	1:A:408:SER:HB3	2.03	0.41
1:B:476:LEU:HA	2:B:1501:JJ3:O27	2.20	0.40
1:B:329:ARG:HH21	1:B:412:PRO:HB3	1.86	0.40
1:B:270:LEU:HA	1:B:270:LEU:HD23	1.87	0.40
1:B:325:PHE:CE1	1:B:329:ARG:CZ	3.05	0.40
1:A:348:ILE:O	1:A:388:ARG:HD3	2.21	0.40

All (1) symmetry-related close contacts are listed below. The label for Atom-2 includes the symmetry operator and encoded unit-cell translations to be applied.

Atom-1	Atom-2	Interatomic distance (Å)	Clash overlap (Å)
1:A:358:PRO:O	1:B:358:PRO:O[6_545]	2.02	0.18

5.3 Torsion angles [i](#)

5.3.1 Protein backbone [i](#)

In the following table, the Percentiles column shows the percent Ramachandran outliers of the chain as a percentile score with respect to all X-ray entries followed by that with respect to entries of similar resolution.

The Analysed column shows the number of residues for which the backbone conformation was analysed, and the total number of residues.

Mol	Chain	Analysed	Favoured	Allowed	Outliers	Percentiles	
1	A	216/257 (84%)	206 (95%)	8 (4%)	2 (1%)	21	22
1	B	219/257 (85%)	209 (95%)	9 (4%)	1 (0%)	34	39
All	All	435/514 (85%)	415 (95%)	17 (4%)	3 (1%)	26	30

All (3) Ramachandran outliers are listed below:

Mol	Chain	Res	Type
1	A	265	PRO
1	B	369	CYS
1	A	412	PRO

5.3.2 Protein sidechains [i](#)

In the following table, the Percentiles column shows the percent sidechain outliers of the chain as a percentile score with respect to all X-ray entries followed by that with respect to entries of similar resolution.

The Analysed column shows the number of residues for which the sidechain conformation was analysed, and the total number of residues.

Mol	Chain	Analysed	Rotameric	Outliers	Percentiles	
1	A	197/231 (85%)	188 (95%)	9 (5%)	33	43
1	B	201/231 (87%)	195 (97%)	6 (3%)	48	63
All	All	398/462 (86%)	383 (96%)	15 (4%)	40	53

All (15) residues with a non-rotameric sidechain are listed below:

Mol	Chain	Res	Type
1	A	264	SER
1	A	267	GLN
1	A	363	ASP
1	A	385	SER
1	A	410	MET
1	A	429	LEU
1	A	458	LEU
1	A	479	MET
1	A	495	LEU
1	B	267	GLN
1	B	346	ARG
1	B	359	ASP
1	B	363	ASP
1	B	458	LEU
1	B	483	ASN

Some sidechains can be flipped to improve hydrogen bonding and reduce clashes. All (10) such sidechains are listed below:

Mol	Chain	Res	Type
1	A	267	GLN
1	A	350	HIS
1	A	428	HIS
1	A	457	ASN
1	A	470	ASN
1	A	478	ASN
1	B	267	GLN
1	B	350	HIS
1	B	457	ASN
1	B	464	HIS

5.3.3 RNA ⓘ

There are no RNA molecules in this entry.

5.4 Non-standard residues in protein, DNA, RNA chains ⓘ

There are no non-standard protein/DNA/RNA residues in this entry.

5.5 Carbohydrates ⓘ

There are no carbohydrates in this entry.

5.6 Ligand geometry

2 ligands are modelled in this entry.

In the following table, the Counts columns list the number of bonds (or angles) for which Mogul statistics could be retrieved, the number of bonds (or angles) that are observed in the model and the number of bonds (or angles) that are defined in the chemical component dictionary. The Link column lists molecule types, if any, to which the group is linked. The Z score for a bond length (or angle) is the number of standard deviations the observed value is removed from the expected value. A bond length (or angle) with $|Z| > 2$ is considered an outlier worth inspection. RMSZ is the root-mean-square of all Z scores of the bond lengths (or angles).

Mol	Type	Chain	Res	Link	Bond lengths			Bond angles		
					Counts	RMSZ	$\# Z > 2$	Counts	RMSZ	$\# Z > 2$
2	JJ3	A	1499	-	27,27,27	0.72	0	32,39,39	1.01	1 (3%)
2	JJ3	B	1501	-	27,27,27	0.70	0	32,39,39	0.98	0

In the following table, the Chirals column lists the number of chiral outliers, the number of chiral centers analysed, the number of these observed in the model and the number defined in the chemical component dictionary. Similar counts are reported in the Torsion and Rings columns. '-' means no outliers of that kind were identified.

Mol	Type	Chain	Res	Link	Chirals	Torsions	Rings
2	JJ3	A	1499	-	-	0/7/29/29	0/4/4/4
2	JJ3	B	1501	-	-	0/7/29/29	0/4/4/4

There are no bond length outliers.

All (1) bond angle outliers are listed below:

Mol	Chain	Res	Type	Atoms	Z	Observed($^{\circ}$)	Ideal($^{\circ}$)
2	A	1499	JJ3	C17-C6-C8	-2.15	110.80	113.90

There are no chirality outliers.

There are no torsion outliers.

There are no ring outliers.

2 monomers are involved in 19 short contacts:

Mol	Chain	Res	Type	Clashes	Symm-Clashes
2	A	1499	JJ3	9	0
2	B	1501	JJ3	10	0

5.7 Other polymers

There are no such residues in this entry.

5.8 Polymer linkage issues

There are no chain breaks in this entry.

6 Fit of model and data ⓘ

6.1 Protein, DNA and RNA chains ⓘ

In the following table, the column labelled ‘#RSRZ> 2’ contains the number (and percentage) of RSRZ outliers, followed by percent RSRZ outliers for the chain as percentile scores relative to all X-ray entries and entries of similar resolution. The OWAB column contains the minimum, median, 95th percentile and maximum values of the occupancy-weighted average B-factor per residue. The column labelled ‘Q< 0.9’ lists the number of (and percentage) of residues with an average occupancy less than 0.9.

Mol	Chain	Analysed	<RSRZ>	#RSRZ>2	OWAB(Å ²)	Q<0.9
1	A	224/257 (87%)	0.75	35 (15%) 3 4	28, 44, 74, 88	1 (0%)
1	B	227/257 (88%)	0.86	39 (17%) 2 3	28, 44, 77, 93	1 (0%)
All	All	451/514 (87%)	0.81	74 (16%) 2 3	28, 44, 77, 93	2 (0%)

All (74) RSRZ outliers are listed below:

Mol	Chain	Res	Type	RSRZ
1	B	292	ALA	12.6
1	A	485	VAL	9.0
1	B	483	ASN	6.9
1	B	485	VAL	6.7
1	A	483	ASN	5.5
1	A	285	PRO	5.2
1	B	488	TYR	4.6
1	B	260	LEU	4.4
1	A	414	VAL	4.3
1	A	488	TYR	4.3
1	A	369	CYS	3.9
1	A	484	VAL	3.9
1	B	369	CYS	3.8
1	B	414	VAL	3.8
1	B	325	PHE	3.7
1	B	423	SER	3.5
1	B	261	ASP	3.5
1	B	499	VAL	3.4
1	B	285	PRO	3.4
1	B	484	VAL	3.3
1	B	404	ILE	3.2
1	A	292	ALA	3.2
1	B	479	MET	3.2
1	A	462	LEU	3.1

Continued on next page...

Continued from previous page...

Mol	Chain	Res	Type	RSRZ
1	A	479	MET	3.1
1	A	404	ILE	3.0
1	A	423	SER	3.0
1	B	462	LEU	3.0
1	A	372	GLY	2.9
1	A	325	PHE	2.9
1	A	428	HIS	2.8
1	B	372	GLY	2.8
1	B	410	MET	2.8
1	A	445	GLY	2.6
1	A	442	ALA	2.6
1	B	324	LEU	2.6
1	A	321	GLU	2.5
1	B	447	SER	2.5
1	A	341	MET	2.5
1	A	408	SER	2.5
1	B	341	MET	2.5
1	A	338	VAL	2.4
1	B	446	ILE	2.4
1	A	284	ARG	2.4
1	B	371	GLU	2.4
1	B	480	LYS	2.4
1	B	338	VAL	2.4
1	A	480	LYS	2.3
1	A	461	LEU	2.3
1	A	469	SER	2.3
1	B	465	VAL	2.3
1	A	296	MET	2.3
1	A	412	PRO	2.2
1	A	359	ASP	2.2
1	A	340	MET	2.2
1	B	359	ASP	2.2
1	B	460	MET	2.2
1	A	465	VAL	2.2
1	B	413	LEU	2.2
1	B	461	LEU	2.2
1	B	443	LYS	2.2
1	B	296	MET	2.1
1	A	365	ASP	2.1
1	B	282	ILE	2.1
1	B	321	GLU	2.1
1	A	329	ARG	2.1

Continued on next page...

Continued from previous page...

Mol	Chain	Res	Type	RSRZ
1	B	422	SER	2.1
1	B	365	ASP	2.1
1	B	402	ALA	2.0
1	A	463	SER	2.0
1	A	402	ALA	2.0
1	B	408	SER	2.0
1	B	267	GLN	2.0
1	A	460	MET	2.0

6.2 Non-standard residues in protein, DNA, RNA chains [i](#)

There are no non-standard protein/DNA/RNA residues in this entry.

6.3 Carbohydrates [i](#)

There are no carbohydrates in this entry.

6.4 Ligands [i](#)

In the following table, the Atoms column lists the number of modelled atoms in the group and the number defined in the chemical component dictionary. LLDF column lists the quality of electron density of the group with respect to its neighbouring residues in protein, DNA or RNA chains. The B-factors column lists the minimum, median, 95th percentile and maximum values of B factors of atoms in the group. The column labelled 'Q< 0.9' lists the number of atoms with occupancy less than 0.9.

Mol	Type	Chain	Res	Atoms	RSCC	RSR	LLDF	B-factors(\AA^2)	Q<0.9
2	JJ3	B	1501	24/24	0.89	0.14	-0.51	42,46,49,50	0
2	JJ3	A	1499	24/24	0.89	0.13	-0.73	40,45,49,50	0

6.5 Other polymers [i](#)

There are no such residues in this entry.