



Full wwPDB X-ray Structure Validation Report ⓘ

Feb 1, 2016 – 05:50 PM GMT

PDB ID : 4JNI
Title : Crystal Structure of uPA in complex with its inhibitor 4-bromobenzylamine at pH 4.6
Authors : Zhang, X.; Jiang, L.; Zhao, B.; Yuan, C.; Huang, M.
Deposited on : 2013-03-15
Resolution : 1.17 Å(reported)

This is a Full wwPDB X-ray Structure Validation Report for a publicly released PDB entry.
We welcome your comments at validation@mail.wwpdb.org
A user guide is available at
<http://wwpdb.org/validation/2016/XrayValidationReportHelp>
with specific help available everywhere you see the ⓘ symbol.

The following versions of software and data (see [references ⓘ](#)) were used in the production of this report:

MolProbity : 4.02b-467
Mogul : 1.7 (RC4), CSD as536be (2015)
Xtriage (Phenix) : 1.9-1692
EDS : rb-20026688
Percentile statistics : 20151230.v01 (using entries in the PDB archive December 30th 2015)
Refmac : 5.8.0135
CCP4 : 6.5.0
Ideal geometry (proteins) : Engh & Huber (2001)
Ideal geometry (DNA, RNA) : Parkinson et al. (1996)
Validation Pipeline (wwPDB-VP) : trunk26865

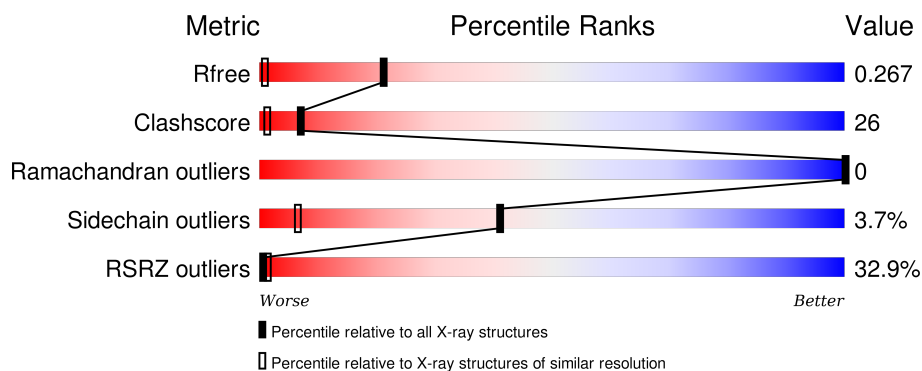
1 Overall quality at a glance

The following experimental techniques were used to determine the structure:

X-RAY DIFFRACTION

The reported resolution of this entry is 1.17 Å.

Percentile scores (ranging between 0-100) for global validation metrics of the entry are shown in the following graphic. The table shows the number of entries on which the scores are based.



Metric	Whole archive (#Entries)	Similar resolution (#Entries, resolution range(Å))
R_{free}	91344	1018 (1.22-1.14)
Clashscore	102246	1094 (1.22-1.14)
Ramachandran outliers	100387	1047 (1.22-1.14)
Sidechain outliers	100360	1046 (1.22-1.14)
RSRZ outliers	91569	1020 (1.22-1.14)

The table below summarises the geometric issues observed across the polymeric chains and their fit to the electron density. The red, orange, yellow and green segments on the lower bar indicate the fraction of residues that contain outliers for ≥ 3 , 2, 1 and 0 types of geometric quality criteria. A grey segment represents the fraction of residues that are not modelled. The numeric value for each fraction is indicated below the corresponding segment, with a dot representing fractions $\leq 5\%$. The upper red bar (where present) indicates the fraction of residues that have poor fit to the electron density. The numeric value is given above the bar.

Mol	Chain	Length	Quality of chain
1	U	247	

The following table lists non-polymeric compounds, carbohydrate monomers and non-standard residues in protein, DNA, RNA chains that are outliers for geometric or electron-density-fit criteria:

Mol	Type	Chain	Res	Chirality	Geometry	Clashes	Electron density
2	SO4	U	301	-	-	X	X

Continued on next page...

Continued from previous page...

Mol	Type	Chain	Res	Chirality	Geometry	Clashes	Electron density
3	PZH	U	302	-	-	X	X

2 Entry composition [i](#)

There are 5 unique types of molecules in this entry. The entry contains 2169 atoms, of which 0 are hydrogens and 0 are deuteriums.

In the tables below, the ZeroOcc column contains the number of atoms modelled with zero occupancy, the AltConf column contains the number of residues with at least one atom in alternate conformation and the Trace column contains the number of residues modelled with at most 2 atoms.

- Molecule 1 is a protein called Urokinase-type plasminogen activator.

Mol	Chain	Residues	Atoms					ZeroOcc	AltConf	Trace
			Total	C	N	O	S			
1	U	246	1942	1226	340	361	15	0	0	0

There are 2 discrepancies between the modelled and reference sequences:

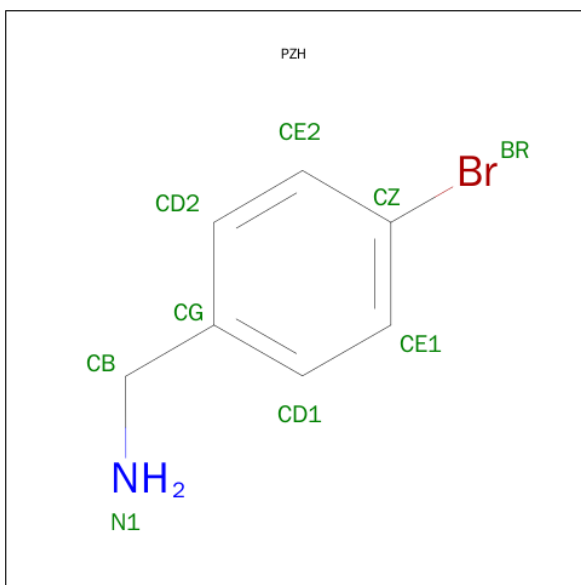
Chain	Residue	Modelled	Actual	Comment	Reference
U	122	ALA	CYS	ENGINEERED MUTATION	UNP P00749
U	145	GLN	ASN	ENGINEERED MUTATION	UNP P00749

- Molecule 2 is SULFATE ION (three-letter code: SO₄) (formula: O₄S).



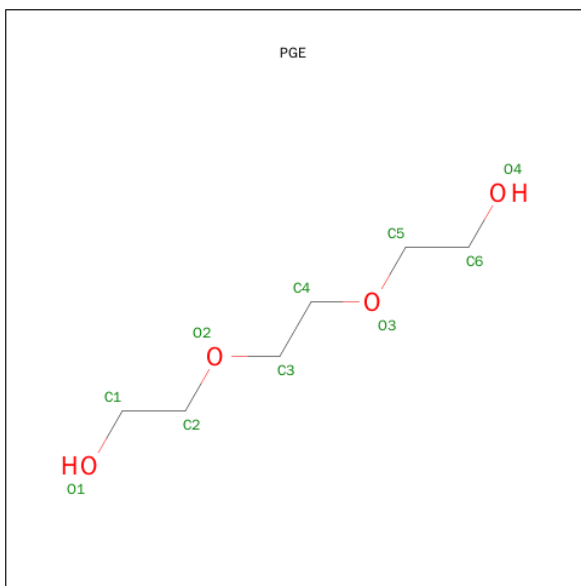
Mol	Chain	Residues	Atoms			ZeroOcc	AltConf
			Total	O	S		
2	U	1	5	4	1	0	0

- Molecule 3 is 1-(4-BROMOPHENYL)METHANAMINE (three-letter code: PZH) (formula: C₇H₈BrN).



Mol	Chain	Residues	Atoms				ZeroOcc	AltConf
3	U	1	Total	Br	C	N	0	0
			9	1	7	1		

- Molecule 4 is TRIETHYLENE GLYCOL (three-letter code: PGE) (formula: $C_6H_{14}O_4$).



Mol	Chain	Residues	Atoms			ZeroOcc	AltConf
4	U	1	Total	C	O	0	0
			10	6	4		
4	U	1	Total	C	O	0	0
			10	6	4		

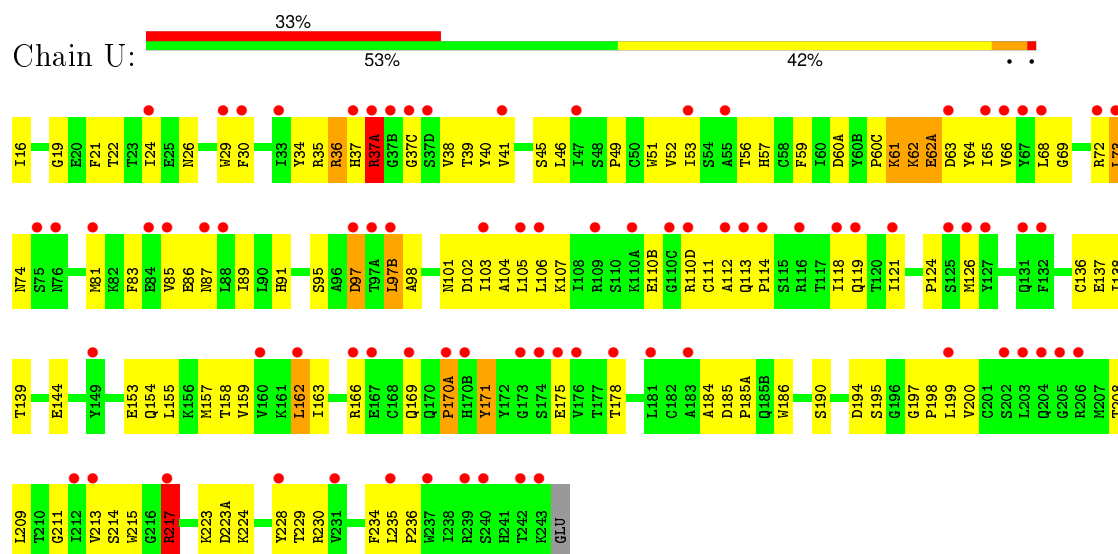
- Molecule 5 is water.

Mol	Chain	Residues	Atoms		ZeroOcc	AltConf
5	U	193	Total 193	O 193	0	0

3 Residue-property plots

These plots are drawn for all protein, RNA and DNA chains in the entry. The first graphic for a chain summarises the proportions of errors displayed in the second graphic. The second graphic shows the sequence view annotated by issues in geometry and electron density. Residues are color-coded according to the number of geometric quality criteria for which they contain at least one outlier: green = 0, yellow = 1, orange = 2 and red = 3 or more. A red dot above a residue indicates a poor fit to the electron density ($RSRZ > 2$). Stretches of 2 or more consecutive residues without any outlier are shown as a green connector. Residues present in the sample, but not in the model, are shown in grey.

- Molecule 1: Urokinase-type plasminogen activator



4 Data and refinement statistics

Property	Value	Source
Space group	H 3	Depositor
Cell constants a, b, c, α , β , γ	114.81Å 114.81Å 40.93Å 90.00° 90.00° 120.00°	Depositor
Resolution (Å)	27.70 – 1.17 22.87 – 1.17	Depositor EDS
% Data completeness (in resolution range)	99.3 (27.70-1.17) 99.3 (22.87-1.17)	Depositor EDS
R_{merge}	0.08	Depositor
R_{sym}	(Not available)	Depositor
$\langle I/\sigma(I) \rangle$ ¹	2.08 (at 1.17Å)	Xtriage
Refinement program	REFMAC 5.7.0029	Depositor
R, R_{free}	0.254 , 0.276 0.247 , 0.267	Depositor DCC
R_{free} test set	3445 reflections (5.38%)	DCC
Wilson B-factor (Å ²)	11.4	Xtriage
Anisotropy	0.080	Xtriage
Bulk solvent k_{sol} (e/Å ³), B_{sol} (Å ²)	0.45 , 27.3	EDS
Estimated twinning fraction	0.016 for h,-h-k,-l	Xtriage
L-test for twinning ²	$\langle L \rangle = 0.50$, $\langle L^2 \rangle = 0.33$	Xtriage
Outliers	0 of 67400 reflections	Xtriage
F_o, F_c correlation	0.94	EDS
Total number of atoms	2169	wwPDB-VP
Average B, all atoms (Å ²)	18.0	wwPDB-VP

Xtriage's analysis on translational NCS is as follows: *The largest off-origin peak in the Patterson function is 7.42% of the height of the origin peak. No significant pseudotranslation is detected.*

¹Intensities estimated from amplitudes.

²Theoretical values of $\langle |L| \rangle$, $\langle L^2 \rangle$ for acentric reflections are 0.5, 0.375 respectively for untwinned datasets, and 0.333, 0.2 for perfectly twinned datasets.

5 Model quality

5.1 Standard geometry

Bond lengths and bond angles in the following residue types are not validated in this section: PGE, SO4, PZH

The Z score for a bond length (or angle) is the number of standard deviations the observed value is removed from the expected value. A bond length (or angle) with $|Z| > 5$ is considered an outlier worth inspection. RMSZ is the root-mean-square of all Z scores of the bond lengths (or angles).

Mol	Chain	Bond lengths		Bond angles	
		RMSZ	$\# Z > 5$	RMSZ	$\# Z > 5$
1	U	1.21	9/1991 (0.5%)	0.96	6/2697 (0.2%)

Chiral center outliers are detected by calculating the chiral volume of a chiral center and verifying if the center is modelled as a planar moiety or with the opposite hand. A planarity outlier is detected by checking planarity of atoms in a peptide group, atoms in a mainchain group or atoms of a sidechain that are expected to be planar.

Mol	Chain	#Chirality outliers	#Planarity outliers
1	U	0	1

All (9) bond length outliers are listed below:

Mol	Chain	Res	Type	Atoms	Z	Observed(Å)	Ideal(Å)
1	U	217	ARG	C-N	9.29	1.49	1.33
1	U	62(A)	GLU	CD-OE1	-7.22	1.17	1.25
1	U	170(A)	PRO	N-CD	6.77	1.57	1.47
1	U	171	TYR	CE1-CZ	-6.73	1.29	1.38
1	U	60(C)	PRO	N-CD	6.34	1.56	1.47
1	U	95	SER	CB-OG	-6.26	1.34	1.42
1	U	97(B)	LEU	C-O	-5.92	1.12	1.23
1	U	185	ASP	C-O	-5.83	1.12	1.23
1	U	62(A)	GLU	CD-OE2	-5.41	1.19	1.25

All (6) bond angle outliers are listed below:

Mol	Chain	Res	Type	Atoms	Z	Observed(°)	Ideal(°)
1	U	60(A)	ASP	CB-CG-OD2	-7.16	111.86	118.30
1	U	97	ASP	CB-CG-OD2	-7.08	111.93	118.30
1	U	97	ASP	N-CA-C	-6.30	93.98	111.00
1	U	217	ARG	O-C-N	-5.85	113.25	123.20

Continued on next page...

Continued from previous page...

Mol	Chain	Res	Type	Atoms	Z	Observed(°)	Ideal(°)
1	U	97(B)	LEU	CB-CG-CD1	-5.17	102.22	111.00
1	U	37(A)	ARG	CB-CG-CD	5.11	124.89	111.60

There are no chirality outliers.

All (1) planarity outliers are listed below:

Mol	Chain	Res	Type	Group
1	U	217	ARG	Mainchain

5.2 Too-close contacts ⓘ

In the following table, the Non-H and H(model) columns list the number of non-hydrogen atoms and hydrogen atoms in the chain respectively. The H(added) column lists the number of hydrogen atoms added and optimized by MolProbity. The Clashes column lists the number of clashes within the asymmetric unit, whereas Symm-Clashes lists symmetry related clashes.

Mol	Chain	Non-H	H(model)	H(added)	Clashes	Symm-Clashes
1	U	1942	0	1895	93	0
2	U	5	0	0	3	0
3	U	9	0	8	9	0
4	U	20	0	28	5	0
5	U	193	0	0	9	0
All	All	2169	0	1931	103	0

The all-atom clashscore is defined as the number of clashes found per 1000 atoms (including hydrogen atoms). The all-atom clashscore for this structure is 26.

All (103) close contacts within the same asymmetric unit are listed below, sorted by their clash magnitude.

Atom-1	Atom-2	Interatomic distance (Å)	Clash overlap (Å)
1:U:190:SER:OG	3:U:302:PZH:HB2	1.48	1.12
1:U:97(B):LEU:HD22	1:U:175:GLU:CD	1.88	0.94
1:U:37(A):ARG:H	1:U:37(A):ARG:HD3	1.41	0.86
3:U:302:PZH:CE1	5:U:592:HOH:O	2.22	0.86
1:U:37(A):ARG:CD	1:U:37(A):ARG:H	1.86	0.86
2:U:301:SO4:O4	3:U:302:PZH:BR	2.52	0.83
1:U:37:HIS:O	1:U:37(C):GLY:HA2	1.83	0.78
3:U:302:PZH:HB1	5:U:593:HOH:O	1.84	0.76
1:U:97(B):LEU:HD22	1:U:175:GLU:OE1	1.84	0.76

Continued on next page...

Continued from previous page...

Atom-1	Atom-2	Interatomic distance (Å)	Clash overlap (Å)
4:U:303:PGE:C3	5:U:519:HOH:O	2.35	0.74
4:U:303:PGE:H32	5:U:519:HOH:O	1.89	0.71
3:U:302:PZH:N1	5:U:591:HOH:O	2.25	0.69
1:U:97(B):LEU:HD22	1:U:175:GLU:OE2	1.93	0.68
1:U:37:HIS:HE1	1:U:39:THR:OG1	1.76	0.68
1:U:62:LYS:HE3	1:U:86:GLU:O	1.94	0.67
3:U:302:PZH:CD1	5:U:592:HOH:O	2.40	0.65
1:U:53:ILE:HD11	1:U:103:ILE:HD11	1.77	0.65
1:U:190:SER:OG	3:U:302:PZH:CB	2.37	0.64
1:U:61:LYS:HG2	1:U:62(A):GLU:OE1	1.99	0.62
1:U:198:PRO:HB2	1:U:200:VAL:HG23	1.82	0.61
1:U:29:TRP:CG	1:U:121:ILE:HB	2.35	0.60
4:U:303:PGE:H3	5:U:519:HOH:O	2.00	0.60
1:U:22:THR:HG21	1:U:157:MET:HG3	1.84	0.60
2:U:301:SO4:S	3:U:302:PZH:BR	3.16	0.59
1:U:86:GLU:C	1:U:87:ASN:HD22	2.06	0.58
1:U:62:LYS:CE	1:U:86:GLU:O	2.52	0.58
1:U:97:ASP:O	1:U:97(B):LEU:N	2.37	0.57
1:U:163:ILE:HD11	1:U:184:ALA:HB3	1.86	0.56
1:U:68:LEU:CD1	1:U:112:ALA:HB2	2.37	0.55
1:U:40:TYR:CG	1:U:73:LEU:HD21	2.42	0.55
1:U:46:LEU:HD13	1:U:68:LEU:HD11	1.89	0.55
1:U:185(A):PRO:HA	4:U:303:PGE:O3	2.08	0.54
1:U:171:TYR:HA	1:U:223(A):ASP:O	2.07	0.54
1:U:103:ILE:HB	1:U:229:THR:HG21	1.89	0.53
1:U:139:THR:OG1	1:U:157:MET:HG2	2.09	0.53
1:U:45:SER:OG	1:U:198:PRO:HB3	2.09	0.53
1:U:21:PHE:CD1	1:U:154:GLN:HB3	2.45	0.52
1:U:110(B):GLU:HB3	1:U:110(D):ARG:HH21	1.75	0.51
1:U:186:TRP:CG	1:U:223:LYS:HA	2.45	0.51
1:U:57:HIS:ND1	1:U:102:ASP:OD2	2.44	0.51
1:U:81:MET:HE1	1:U:113:GLN:N	2.26	0.51
1:U:74:ASN:N	1:U:153:GLU:OE2	2.35	0.51
1:U:19:GLY:HA3	1:U:158:THR:HB	1.92	0.50
1:U:37:HIS:HD2	1:U:37(A):ARG:NH2	2.08	0.50
1:U:159:VAL:HG21	4:U:304:PGE:H3	1.93	0.50
1:U:29:TRP:CD2	1:U:121:ILE:HB	2.47	0.50
1:U:72:ARG:HA	1:U:153:GLU:O	2.12	0.50
1:U:57:HIS:CE1	1:U:195:SER:HB3	2.48	0.48
1:U:81:MET:CE	1:U:118:ILE:HD13	2.44	0.48
2:U:301:SO4:O2	3:U:302:PZH:BR	2.87	0.47

Continued on next page...

Continued from previous page...

Atom-1	Atom-2	Interatomic distance (Å)	Clash overlap (Å)
1:U:36:ARG:HG2	1:U:65:ILE:HD11	1.96	0.47
1:U:124:PRO:HD3	1:U:209:LEU:O	2.14	0.47
1:U:98:ALA:HA	1:U:215:TRP:CE2	2.49	0.47
1:U:213:VAL:HG22	1:U:228:TYR:HE2	1.80	0.46
1:U:72:ARG:NH2	1:U:153:GLU:CG	2.78	0.46
1:U:51:TRP:CH2	1:U:107:LYS:HB2	2.51	0.46
1:U:138:ILE:O	1:U:157:MET:HA	2.16	0.46
1:U:22:THR:OG1	1:U:26:ASN:HB2	2.15	0.46
1:U:59:PHE:HD1	1:U:64:TYR:CZ	2.34	0.45
1:U:16:ILE:O	1:U:144:GLU:HA	2.16	0.45
1:U:211:GLY:HA2	1:U:229:THR:O	2.16	0.45
1:U:57:HIS:CE1	1:U:214:SER:O	2.70	0.45
1:U:53:ILE:HG21	1:U:209:LEU:CD2	2.47	0.45
1:U:98:ALA:HA	1:U:215:TRP:CD2	2.51	0.45
1:U:178:THR:O	1:U:230:ARG:HD3	2.16	0.45
1:U:56:THR:HA	1:U:104:ALA:HB2	1.98	0.45
1:U:34:TYR:HB3	1:U:38:VAL:CG1	2.47	0.45
1:U:126:MET:HA	1:U:235:LEU:HD12	1.99	0.44
1:U:36:ARG:HG3	1:U:63:ASP:O	2.17	0.44
1:U:29:TRP:HA	1:U:119:GLN:O	2.16	0.44
1:U:138:ILE:HA	1:U:198:PRO:O	2.18	0.44
1:U:114:PRO:HA	1:U:118:ILE:O	2.17	0.44
1:U:200:VAL:HA	1:U:208:THR:O	2.18	0.44
1:U:49:PRO:C	1:U:111:CYS:HB3	2.37	0.44
1:U:136:CYS:O	1:U:159:VAL:HA	2.18	0.44
1:U:91:HIS:CG	1:U:101:ASN:HB3	2.52	0.44
1:U:35:ARG:HB2	1:U:41:VAL:HG21	2.00	0.44
1:U:72:ARG:HD3	5:U:563:HOH:O	2.18	0.43
1:U:24:ILE:CD1	1:U:30:PHE:HB3	2.48	0.43
1:U:97(B):LEU:CD2	1:U:175:GLU:OE2	2.65	0.43
1:U:89:ILE:HB	1:U:105:LEU:HB2	2.01	0.43
1:U:235:LEU:N	1:U:236:PRO:CD	2.81	0.43
1:U:81:MET:HE2	1:U:118:ILE:CD1	2.49	0.43
1:U:101:ASN:HA	1:U:234:PHE:CZ	2.54	0.42
1:U:162:LEU:HD11	1:U:199:LEU:HD21	2.01	0.42
1:U:137:GLU:HA	1:U:158:THR:O	2.19	0.42
1:U:35:ARG:HG3	1:U:63:ASP:HB3	2.00	0.42
1:U:166:ARG:HA	1:U:169:GLN:HG2	2.01	0.42
1:U:197:GLY:HA3	5:U:404:HOH:O	2.19	0.42
1:U:16:ILE:N	1:U:194:ASP:OD2	2.53	0.42
1:U:85:VAL:HG21	1:U:106:LEU:HD23	2.02	0.42

Continued on next page...

Continued from previous page...

Atom-1	Atom-2	Interatomic distance (Å)	Clash overlap (Å)
1:U:81:MET:HE3	1:U:118:ILE:HD13	2.02	0.42
1:U:186:TRP:CD2	1:U:223:LYS:HA	2.55	0.41
1:U:217:ARG:HB3	1:U:224:LYS:HD2	2.02	0.41
1:U:35:ARG:HB2	1:U:41:VAL:CG2	2.49	0.41
1:U:24:ILE:HG12	1:U:69:GLY:HA2	2.02	0.41
1:U:124:PRO:O	1:U:235:LEU:HD11	2.20	0.41
1:U:72:ARG:NH2	1:U:153:GLU:HG3	2.36	0.41
1:U:138:ILE:HG13	1:U:158:THR:HG22	2.02	0.41
1:U:139:THR:HG22	1:U:155:LEU:HD11	2.02	0.41
1:U:68:LEU:HD12	1:U:83:PHE:CE1	2.56	0.40
1:U:199:LEU:HB3	1:U:211:GLY:CA	2.52	0.40
1:U:52:VAL:HG21	1:U:66:VAL:HG11	2.03	0.40

There are no symmetry-related clashes.

5.3 Torsion angles [i](#)

5.3.1 Protein backbone [i](#)

In the following table, the Percentiles column shows the percent Ramachandran outliers of the chain as a percentile score with respect to all X-ray entries followed by that with respect to entries of similar resolution.

The Analysed column shows the number of residues for which the backbone conformation was analysed, and the total number of residues.

Mol	Chain	Analysed	Favoured	Allowed	Outliers	Percentiles	
1	U	244/247 (99%)	235 (96%)	9 (4%)	0	100	100

There are no Ramachandran outliers to report.

5.3.2 Protein sidechains [i](#)

In the following table, the Percentiles column shows the percent sidechain outliers of the chain as a percentile score with respect to all X-ray entries followed by that with respect to entries of similar resolution.

The Analysed column shows the number of residues for which the sidechain conformation was analysed, and the total number of residues.

Mol	Chain	Analysed	Rotameric	Outliers	Percentiles
1	U	214/215 (100%)	206 (96%)	8 (4%)	41 6

All (8) residues with a non-rotameric sidechain are listed below:

Mol	Chain	Res	Type
1	U	36	ARG
1	U	37(A)	ARG
1	U	61	LYS
1	U	62	LYS
1	U	73	LEU
1	U	162	LEU
1	U	170(A)	PRO
1	U	217	ARG

Some sidechains can be flipped to improve hydrogen bonding and reduce clashes. All (3) such sidechains are listed below:

Mol	Chain	Res	Type
1	U	37	HIS
1	U	87	ASN
1	U	113	GLN

5.3.3 RNA [i](#)

There are no RNA molecules in this entry.

5.4 Non-standard residues in protein, DNA, RNA chains [i](#)

There are no non-standard protein/DNA/RNA residues in this entry.

5.5 Carbohydrates [i](#)

There are no carbohydrates in this entry.

5.6 Ligand geometry [i](#)

4 ligands are modelled in this entry.

In the following table, the Counts columns list the number of bonds (or angles) for which Mogul statistics could be retrieved, the number of bonds (or angles) that are observed in the model and the number of bonds (or angles) that are defined in the chemical component dictionary. The Link

column lists molecule types, if any, to which the group is linked. The Z score for a bond length (or angle) is the number of standard deviations the observed value is removed from the expected value. A bond length (or angle) with $|Z| > 2$ is considered an outlier worth inspection. RMSZ is the root-mean-square of all Z scores of the bond lengths (or angles).

Mol	Type	Chain	Res	Link	Bond lengths			Bond angles		
					Counts	RMSZ	$\# Z > 2$	Counts	RMSZ	$\# Z > 2$
2	SO4	U	301	-	4,4,4	0.29	0	6,6,6	0.21	0
3	PZH	U	302	-	9,9,9	0.48	0	10,11,11	0.90	0
4	PGE	U	303	-	9,9,9	0.46	0	8,8,8	0.64	0
4	PGE	U	304	-	9,9,9	0.44	0	8,8,8	0.37	0

In the following table, the Chirals column lists the number of chiral outliers, the number of chiral centers analysed, the number of these observed in the model and the number defined in the chemical component dictionary. Similar counts are reported in the Torsion and Rings columns. '-' means no outliers of that kind were identified.

Mol	Type	Chain	Res	Link	Chirals	Torsions	Rings
2	SO4	U	301	-	-	0/0/0/0	0/0/0/0
3	PZH	U	302	-	-	0/2/2/2	0/1/1/1
4	PGE	U	303	-	-	0/7/7/7	0/0/0/0
4	PGE	U	304	-	-	0/7/7/7	0/0/0/0

There are no bond length outliers.

There are no bond angle outliers.

There are no chirality outliers.

There are no torsion outliers.

There are no ring outliers.

4 monomers are involved in 14 short contacts:

Mol	Chain	Res	Type	Clashes	Symm-Clashes
2	U	301	SO4	3	0
3	U	302	PZH	9	0
4	U	303	PGE	4	0
4	U	304	PGE	1	0

5.7 Other polymers ⓘ

There are no such residues in this entry.

5.8 Polymer linkage issues

There are no chain breaks in this entry.

6 Fit of model and data

6.1 Protein, DNA and RNA chains

In the following table, the column labelled ‘#RSRZ> 2’ contains the number (and percentage) of RSRZ outliers, followed by percent RSRZ outliers for the chain as percentile scores relative to all X-ray entries and entries of similar resolution. The OWAB column contains the minimum, median, 95th percentile and maximum values of the occupancy-weighted average B-factor per residue. The column labelled ‘Q< 0.9’ lists the number of (and percentage) of residues with an average occupancy less than 0.9.

Mol	Chain	Analysed	<RSRZ>	#RSRZ>2	OWAB(Å ²)	Q<0.9
1	U	246/247 (99%)	1.88	81 (32%) 0 1	6, 14, 36, 76	0

All (81) RSRZ outliers are listed below:

Mol	Chain	Res	Type	RSRZ
1	U	97(A)	THR	10.8
1	U	243	LYS	6.2
1	U	97(B)	LEU	5.6
1	U	37(C)	GLY	5.6
1	U	204	GLN	5.6
1	U	132	PHE	5.1
1	U	37(B)	GLY	4.8
1	U	170(A)	PRO	4.7
1	U	205	GLY	4.6
1	U	113	GLN	4.6
1	U	127	TYR	4.4
1	U	110(D)	ARG	4.4
1	U	97	ASP	4.4
1	U	239	ARG	4.3
1	U	166	ARG	4.1
1	U	112	ALA	4.1
1	U	175	GLU	4.0
1	U	126	MET	3.8
1	U	217	ARG	3.8
1	U	176	VAL	3.6
1	U	65	ILE	3.5
1	U	131	GLN	3.4
1	U	37(D)	SER	3.4
1	U	84	GLU	3.3
1	U	85	VAL	3.3
1	U	109	ARG	3.2
1	U	206	ARG	3.2

Continued on next page...

Continued from previous page...

Mol	Chain	Res	Type	RSRZ
1	U	37(A)	ARG	3.2
1	U	181	LEU	3.2
1	U	174	SER	3.1
1	U	149	TYR	3.1
1	U	203	LEU	3.1
1	U	30	PHE	3.0
1	U	162	LEU	3.0
1	U	212	ILE	3.0
1	U	178	THR	3.0
1	U	240	SER	3.0
1	U	73	LEU	2.9
1	U	76	ASN	2.9
1	U	167	GLU	2.8
1	U	33	ILE	2.8
1	U	66	VAL	2.8
1	U	118	ILE	2.8
1	U	75	SER	2.7
1	U	106	LEU	2.7
1	U	37	HIS	2.7
1	U	202	SER	2.7
1	U	170(B)	HIS	2.6
1	U	160	VAL	2.6
1	U	53	ILE	2.5
1	U	87	ASN	2.5
1	U	199	LEU	2.5
1	U	235	LEU	2.5
1	U	213	VAL	2.4
1	U	72	ARG	2.4
1	U	110(A)	LYS	2.4
1	U	119	GLN	2.4
1	U	231	VAL	2.4
1	U	116	ARG	2.4
1	U	114	PRO	2.3
1	U	55	ALA	2.3
1	U	29	TRP	2.3
1	U	81	MET	2.3
1	U	68	LEU	2.3
1	U	88	LEU	2.3
1	U	47	ILE	2.2
1	U	173	GLY	2.2
1	U	24	ILE	2.2
1	U	110(C)	GLY	2.2

Continued on next page...

Continued from previous page...

Mol	Chain	Res	Type	RSRZ
1	U	242	THR	2.2
1	U	63	ASP	2.2
1	U	121	ILE	2.1
1	U	169	GLN	2.1
1	U	41	VAL	2.1
1	U	67	TYR	2.1
1	U	228	TYR	2.1
1	U	183	ALA	2.1
1	U	105	LEU	2.0
1	U	125	SER	2.0
1	U	103	ILE	2.0
1	U	237	TRP	2.0

6.2 Non-standard residues in protein, DNA, RNA chains [i](#)

There are no non-standard protein/DNA/RNA residues in this entry.

6.3 Carbohydrates [i](#)

There are no carbohydrates in this entry.

6.4 Ligands [i](#)

In the following table, the Atoms column lists the number of modelled atoms in the group and the number defined in the chemical component dictionary. LLDF column lists the quality of electron density of the group with respect to its neighbouring residues in protein, DNA or RNA chains. The B-factors column lists the minimum, median, 95th percentile and maximum values of B factors of atoms in the group. The column labelled 'Q< 0.9' lists the number of atoms with occupancy less than 0.9.

Mol	Type	Chain	Res	Atoms	RSCC	RSR	LLDF	B-factors(\AA^2)	Q<0.9
3	PZH	U	302	9/9	0.54	0.33	9.40	18,19,24,40	0
2	SO4	U	301	5/5	0.92	0.17	2.51	16,17,21,22	0
4	PGE	U	303	10/10	0.54	0.24	1.97	30,34,39,40	0
4	PGE	U	304	10/10	0.63	0.18	1.85	30,35,41,42	0

6.5 Other polymers [i](#)

There are no such residues in this entry.