



Full wwPDB X-ray Structure Validation Report ⓘ

Feb 1, 2016 – 09:49 AM GMT

PDB ID : 3JSM
Title : K65R mutant HIV-1 reverse transcriptase cross-linked to DS-DNA and complexed with tenofovir-diphosphate as the incoming nucleotide substrate
Authors : Das, K.; Arnold, E.
Deposited on : 2009-09-10
Resolution : 3.00 Å(reported)

This is a Full wwPDB X-ray Structure Validation Report for a publicly released PDB entry.
We welcome your comments at validation@mail.wwpdb.org
A user guide is available at
<http://wwpdb.org/validation/2016/XrayValidationReportHelp>
with specific help available everywhere you see the ⓘ symbol.

The following versions of software and data (see [references ⓘ](#)) were used in the production of this report:

MolProbity : 4.02b-467
Mogul : 1.7 (RC4), CSD as536be (2015)
Xtriage (Phenix) : 1.9-1692
EDS : rb-20026688
Percentile statistics : 20151230.v01 (using entries in the PDB archive December 30th 2015)
Refmac : 5.8.0135
CCP4 : 6.5.0
Ideal geometry (proteins) : Engh & Huber (2001)
Ideal geometry (DNA, RNA) : Parkinson et al. (1996)
Validation Pipeline (wwPDB-VP) : trunk26865

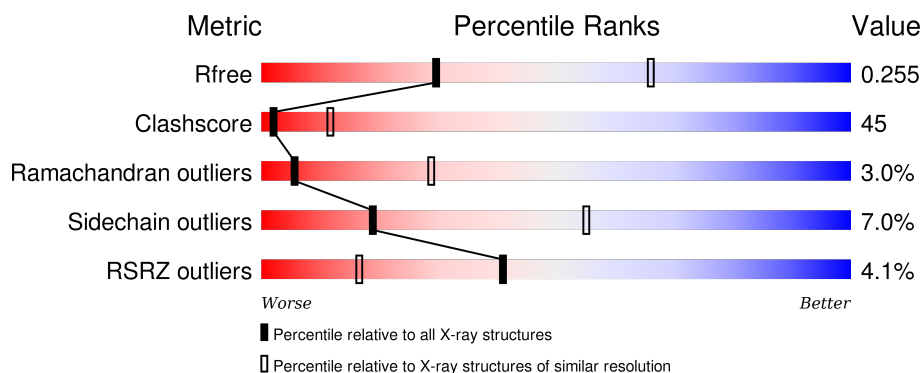
1 Overall quality at a glance

The following experimental techniques were used to determine the structure:

X-RAY DIFFRACTION

The reported resolution of this entry is 3.00 Å.

Percentile scores (ranging between 0-100) for global validation metrics of the entry are shown in the following graphic. The table shows the number of entries on which the scores are based.



Metric	Whole archive (#Entries)	Similar resolution (#Entries, resolution range(Å))
R_{free}	91344	1578 (3.00-3.00)
Clashscore	102246	1912 (3.00-3.00)
Ramachandran outliers	100387	1853 (3.00-3.00)
Sidechain outliers	100360	1856 (3.00-3.00)
RSRZ outliers	91569	1592 (3.00-3.00)

The table below summarises the geometric issues observed across the polymeric chains and their fit to the electron density. The red, orange, yellow and green segments on the lower bar indicate the fraction of residues that contain outliers for ≥ 3 , 2, 1 and 0 types of geometric quality criteria. A grey segment represents the fraction of residues that are not modelled. The numeric value for each fraction is indicated below the corresponding segment, with a dot representing fractions $\leq 5\%$. The upper red bar (where present) indicates the fraction of residues that have poor fit to the electron density. The numeric value is given above the bar.

Mol	Chain	Length	Quality of chain
1	T	27	
2	P	21	
3	A	558	
4	B	437	

The following table lists non-polymeric compounds, carbohydrate monomers and non-standard

residues in protein, DNA, RNA chains that are outliers for geometric or electron-density-fit criteria:

Mol	Type	Chain	Res	Chirality	Geometry	Clashes	Electron density
7	SO4	A	560	-	-	-	X

2 Entry composition

There are 8 unique types of molecules in this entry. The entry contains 8854 atoms, of which 0 are hydrogens and 0 are deuteriums.

In the tables below, the ZeroOcc column contains the number of atoms modelled with zero occupancy, the AltConf column contains the number of residues with at least one atom in alternate conformation and the Trace column contains the number of residues modelled with at most 2 atoms.

- Molecule 1 is a DNA chain called DNA (5'-D(*A*TP*GP*GP*TP*CP*GP*GP*CP*GP*CP*CP*GP*AP*AP*CP*AP*GP*GP*GP*AP*CP*TP*GP*TP*G)-3').

Mol	Chain	Residues	Atoms					ZeroOcc	AltConf	Trace
1	T	24	Total	C	N	O	P	0	0	0
			494	233	97	141	23			

- Molecule 2 is a DNA chain called DNA (5'-D(*A*CP*AP*GP*TP*CP*CP*CP*TP*GP*T*P*TP*CP*GP*GP*(MRG)P*CP*GP*CP*CP*(DDG))-3').

Mol	Chain	Residues	Atoms						ZeroOcc	AltConf	Trace
2	P	20	Total	C	N	O	P	S	0	0	0
			407	195	72	120	19	1			

- Molecule 3 is a protein called HIV-1 REVERSE TRANSCRIPTASE P66 SUBUNIT.

Mol	Chain	Residues	Atoms					ZeroOcc	AltConf	Trace
3	A	554	Total	C	N	O	S	0	0	0
			4508	2917	751	832	8			

There are 3 discrepancies between the modelled and reference sequences:

Chain	Residue	Modelled	Actual	Comment	Reference
A	65	ARG	LYS	ENGINEERED	UNP P03366
A	258	CYS	GLN	ENGINEERED	UNP P03366
A	280	SER	CYS	ENGINEERED	UNP P03366

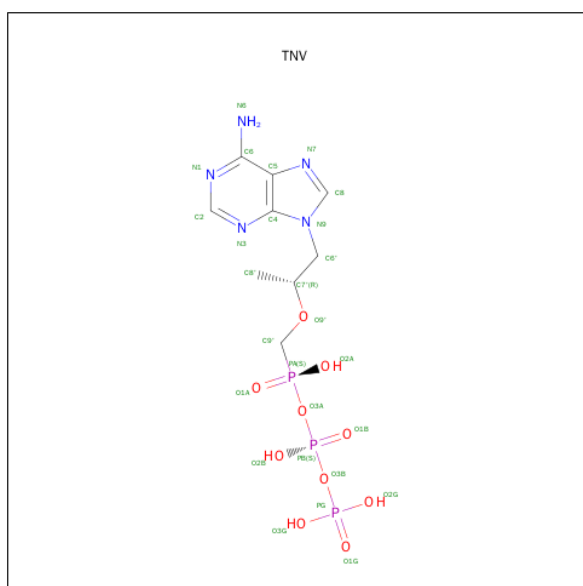
- Molecule 4 is a protein called HIV-1 REVERSE TRANSCRIPTASE P51 SUBUNIT.

Mol	Chain	Residues	Atoms					ZeroOcc	AltConf	Trace
4	B	413	Total	C	N	O	S	0	0	0
			3405	2215	564	620	6			

There are 9 discrepancies between the modelled and reference sequences:

Chain	Residue	Modelled	Actual	Comment	Reference
B	280	SER	CYS	ENGINEERED	UNP P03366
B	430	GLY	-	EXPRESSION TAG	UNP P03366
B	431	GLY	-	EXPRESSION TAG	UNP P03366
B	432	HIS	-	EXPRESSION TAG	UNP P03366
B	433	HIS	-	EXPRESSION TAG	UNP P03366
B	434	HIS	-	EXPRESSION TAG	UNP P03366
B	435	HIS	-	EXPRESSION TAG	UNP P03366
B	436	HIS	-	EXPRESSION TAG	UNP P03366
B	437	HIS	-	EXPRESSION TAG	UNP P03366

- Molecule 5 is [2-(6-AMINO-9H-PURIN-9-YL)-1-METHYLETHOXY]METHYL-TRIPHOSPHATE (three-letter code: TNV) (formula: $C_9H_{16}N_5O_{10}P_3$).



Mol	Chain	Residues	Atoms					ZeroOcc	AltConf
5	A	1	Total	C	N	O	P	0	0
			27	9	5	10	3		

- Molecule 6 is MAGNESIUM ION (three-letter code: MG) (formula: Mg).

Mol	Chain	Residues	Atoms		ZeroOcc	AltConf
6	A	2	Total	Mg	0	0
			2	2		

- Molecule 7 is SULFATE ION (three-letter code: SO4) (formula: O_4S).



Mol	Chain	Residues	Atoms			ZeroOcc	AltConf
7	A	1	Total	O	S	0	0
			5	4	1		
7	A	1	Total	O	S	0	0
			5	4	1		

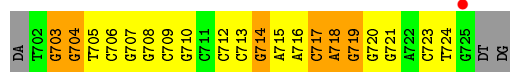
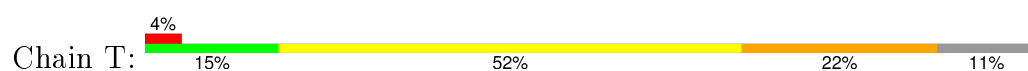
- Molecule 8 is water.

Mol	Chain	Residues	Atoms		ZeroOcc	AltConf
8	A	1	Total	O	0	0
			1	1		

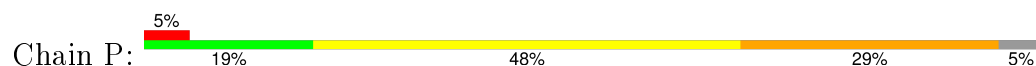
3 Residue-property plots

These plots are drawn for all protein, RNA and DNA chains in the entry. The first graphic for a chain summarises the proportions of errors displayed in the second graphic. The second graphic shows the sequence view annotated by issues in geometry and electron density. Residues are color-coded according to the number of geometric quality criteria for which they contain at least one outlier: green = 0, yellow = 1, orange = 2 and red = 3 or more. A red dot above a residue indicates a poor fit to the electron density ($RSRZ > 2$). Stretches of 2 or more consecutive residues without any outlier are shown as a green connector. Residues present in the sample, but not in the model, are shown in grey.

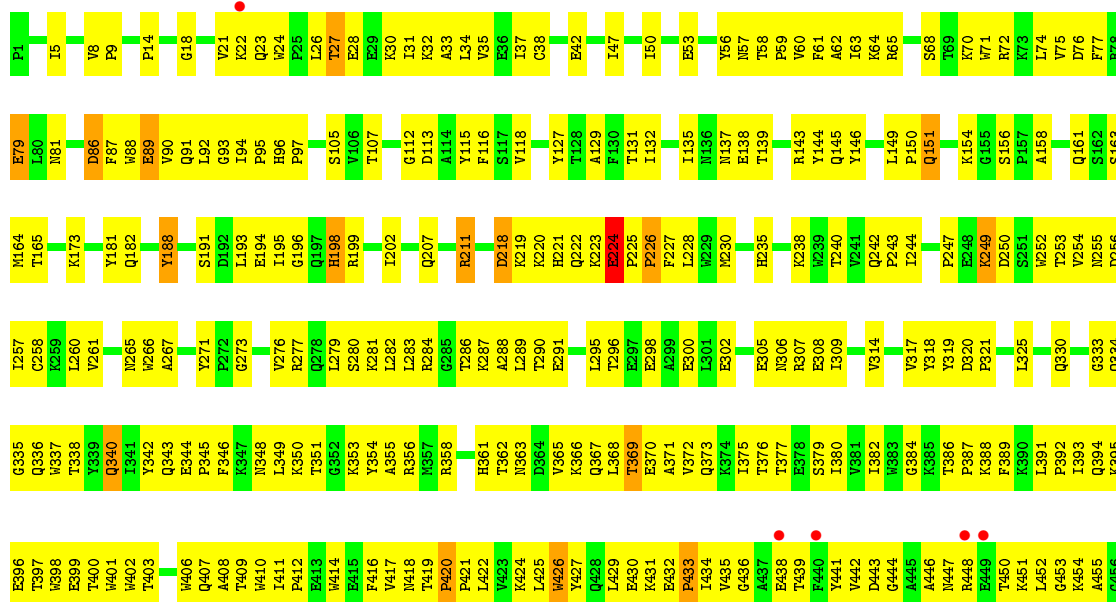
- Molecule 1: DNA (5'-D(*A*TP*GP*GP*TP*CP*GP*GP*CP*GP*CP*CP*CP*GP*AP*AP*CP*AP*GP*GP*GP*AP*CP*TP*GP*TP*G)-3')

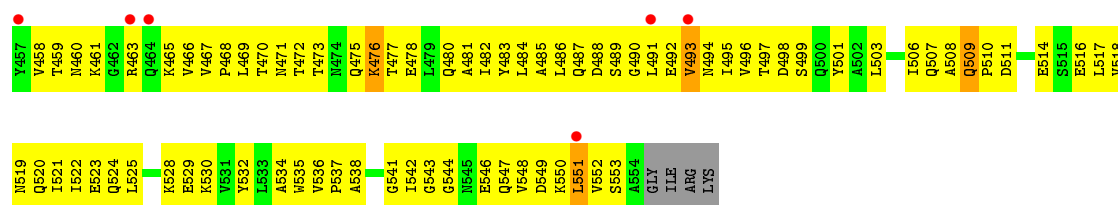


- Molecule 2: DNA (5'-D(*A*CP*AP*GP*TP*CP*CP*CP*TP*GP*TP*TP*CP*GP*GP*(MRG)P*CP*GP*CP*CP*(DDG))-3')

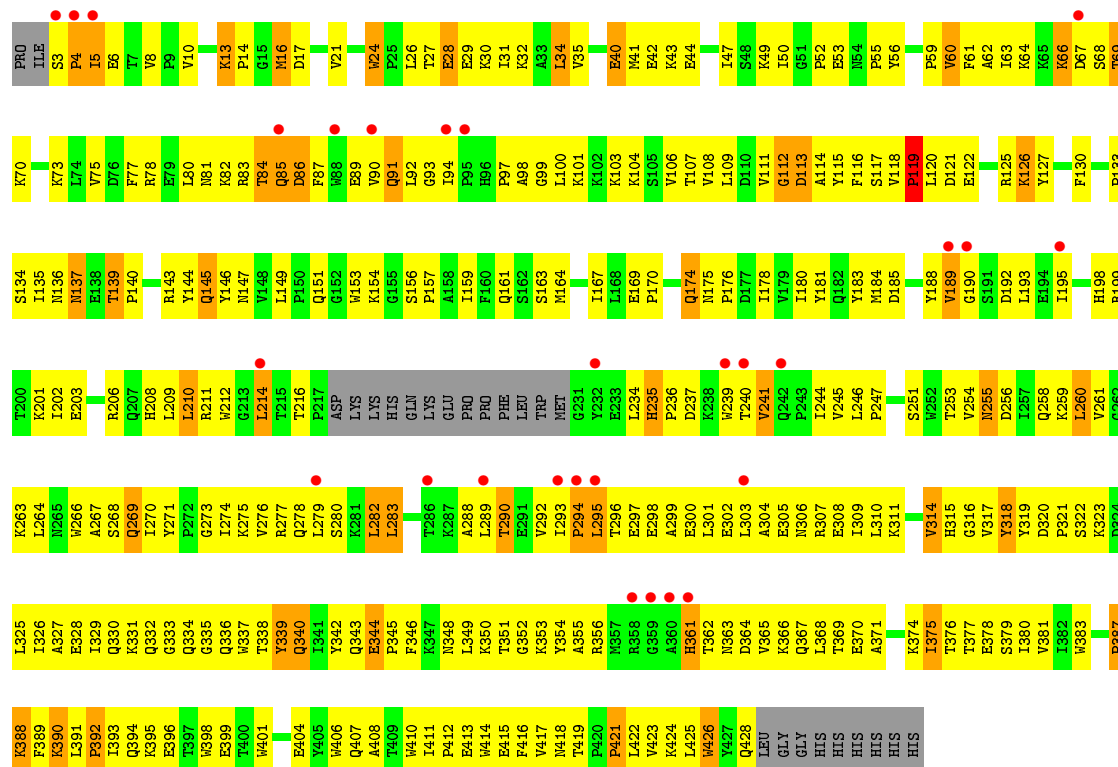


- Molecule 3: HIV-1 REVERSE TRANSCRIPTASE P66 SUBUNIT





● Molecule 4: HIV-1 REVERSE TRANSCRIPTASE P51 SUBUNIT



4 Data and refinement statistics

Property	Value	Source
Space group	P 31 1 2	Depositor
Cell constants a, b, c, α , β , γ	170.31Å 170.31Å 155.44Å 90.00° 90.00° 120.00°	Depositor
Resolution (Å)	49.17 – 3.00 49.16 – 3.00	Depositor EDS
% Data completeness (in resolution range)	95.8 (49.17-3.00) 95.9 (49.16-3.00)	Depositor EDS
R_{merge}	0.16	Depositor
R_{sym}	(Not available)	Depositor
$\langle I/\sigma(I) \rangle$ ¹	1.41 (at 3.01Å)	Xtriage
Refinement program	CNS 1.2	Depositor
R, R_{free}	0.252 , 0.285 0.254 , 0.255	Depositor DCC
R_{free} test set	1482 reflections (2.99%)	DCC
Wilson B-factor (Å ²)	65.5	Xtriage
Anisotropy	0.240	Xtriage
Bulk solvent k_{sol} (e/Å ³), B_{sol} (Å ²)	0.30 , 71.3	EDS
Estimated twinning fraction	0.059 for -h,-k,l	Xtriage
L-test for twinning ²	$\langle L \rangle = 0.44$, $\langle L^2 \rangle = 0.26$	Xtriage
Outliers	0 of 49498 reflections	Xtriage
F_o, F_c correlation	0.90	EDS
Total number of atoms	8854	wwPDB-VP
Average B, all atoms (Å ²)	88.0	wwPDB-VP

Xtriage's analysis on translational NCS is as follows: *The largest off-origin peak in the Patterson function is 3.93% of the height of the origin peak. No significant pseudotranslation is detected.*

¹Intensities estimated from amplitudes.

²Theoretical values of $\langle |L| \rangle$, $\langle L^2 \rangle$ for acentric reflections are 0.5, 0.375 respectively for untwinned datasets, and 0.333, 0.2 for perfectly twinned datasets.

5 Model quality

5.1 Standard geometry

Bond lengths and bond angles in the following residue types are not validated in this section: MRG, MG, TNV, DDG, SO4

The Z score for a bond length (or angle) is the number of standard deviations the observed value is removed from the expected value. A bond length (or angle) with $|Z| > 5$ is considered an outlier worth inspection. RMSZ is the root-mean-square of all Z scores of the bond lengths (or angles).

Mol	Chain	Bond lengths		Bond angles	
		RMSZ	$\# Z > 5$	RMSZ	$\# Z > 5$
1	T	0.60	0/555	1.07	6/856 (0.7%)
2	P	1.00	2/400 (0.5%)	1.61	11/612 (1.8%)
3	A	0.46	0/4626	0.78	4/6285 (0.1%)
4	B	0.44	0/3502	0.75	7/4760 (0.1%)
All	All	0.50	2/9083 (0.0%)	0.85	28/12513 (0.2%)

Chiral center outliers are detected by calculating the chiral volume of a chiral center and verifying if the center is modelled as a planar moiety or with the opposite hand. A planarity outlier is detected by checking planarity of atoms in a peptide group, atoms in a mainchain group or atoms of a sidechain that are expected to be planar.

Mol	Chain	#Chirality outliers	#Planarity outliers
1	T	0	3
2	P	0	1
All	All	0	4

All (2) bond length outliers are listed below:

Mol	Chain	Res	Type	Atoms	Z	Observed(Å)	Ideal(Å)
2	P	803	DC	O3'-P	-11.40	1.47	1.61
2	P	808	DC	O3'-P	-5.19	1.54	1.61

All (28) bond angle outliers are listed below:

Mol	Chain	Res	Type	Atoms	Z	Observed(°)	Ideal(°)
2	P	806	DT	O5'-P-OP1	-25.18	80.48	110.70
1	T	718	DA	OP2-P-O3'	-9.02	85.36	105.20
1	T	717	DC	OP1-P-O3'	-8.98	85.44	105.20
2	P	805	DG	OP1-P-O3'	8.85	124.67	105.20
1	T	717	DC	P-O3'-C3'	-8.84	109.09	119.70

Continued on next page...

Continued from previous page...

Mol	Chain	Res	Type	Atoms	Z	Observed(°)	Ideal(°)
4	B	339	TYR	CB-CA-C	-8.03	94.34	110.40
2	P	806	DT	O5'-P-OP2	7.86	120.14	110.70
1	T	717	DC	OP2-P-O3'	7.78	122.33	105.20
3	A	223	LYS	N-CA-C	-7.55	90.61	111.00
4	B	241	VAL	N-CA-C	-7.40	91.01	111.00
4	B	408	ALA	CB-CA-C	7.17	120.86	110.10
3	A	219	LYS	N-CA-C	-7.09	91.85	111.00
1	T	718	DA	OP1-P-O3'	6.94	120.48	105.20
4	B	60	VAL	CB-CA-C	-6.89	98.31	111.40
2	P	808	DC	P-O3'-C3'	-6.40	112.02	119.70
2	P	803	DC	O3'-P-O5'	6.12	115.62	104.00
2	P	804	DA	OP1-P-O3'	6.08	118.58	105.20
2	P	805	DG	O3'-P-O5'	5.87	115.14	104.00
2	P	808	DC	O3'-P-O5'	5.74	114.90	104.00
3	A	493	VAL	CB-CA-C	-5.67	100.63	111.40
4	B	84	THR	N-CA-C	-5.43	96.34	111.00
4	B	5	ILE	N-CA-C	-5.30	96.69	111.00
1	T	719	DG	N9-C1'-C2'	5.21	122.51	112.60
2	P	803	DC	OP2-P-O3'	-5.16	93.84	105.20
2	P	806	DT	OP1-P-OP2	-5.11	111.93	119.60
2	P	803	DC	OP1-P-O3'	5.11	116.44	105.20
3	A	388	LYS	N-CA-C	-5.06	97.35	111.00
4	B	390	LYS	N-CA-C	-5.03	97.43	111.00

There are no chirality outliers.

All (4) planarity outliers are listed below:

Mol	Chain	Res	Type	Group
2	P	815	DG	Sidechain
1	T	703	DG	Sidechain
1	T	704	DG	Sidechain
1	T	714	DG	Sidechain

5.2 Too-close contacts ⓘ

In the following table, the Non-H and H(model) columns list the number of non-hydrogen atoms and hydrogen atoms in the chain respectively. The H(added) column lists the number of hydrogen atoms added and optimized by MolProbity. The Clashes column lists the number of clashes within the asymmetric unit, whereas Symm-Clashes lists symmetry related clashes.

Mol	Chain	Non-H	H(model)	H(added)	Clashes	Symm-Clashes
1	T	494	0	269	34	0
2	P	407	0	231	34	0
3	A	4508	0	4566	399	0
4	B	3405	0	3437	374	0
5	A	27	0	12	1	0
6	A	2	0	0	0	0
7	A	10	0	0	0	0
8	A	1	0	0	0	0
All	All	8854	0	8515	786	0

The all-atom clashscore is defined as the number of clashes found per 1000 atoms (including hydrogen atoms). The all-atom clashscore for this structure is 45.

All (786) close contacts within the same asymmetric unit are listed below, sorted by their clash magnitude.

Atom-1	Atom-2	Interatomic distance (Å)	Clash overlap (Å)
3:A:195:ILE:HD11	3:A:199:ARG:HE	1.11	1.09
4:B:332:GLN:HB2	4:B:336:GLN:HB3	1.33	1.08
3:A:408:ALA:HB1	4:B:364:ASP:HB3	1.39	1.04
3:A:195:ILE:HD11	3:A:199:ARG:NE	1.76	1.01
4:B:246:LEU:HD22	4:B:260:LEU:HD11	1.47	0.97
3:A:484:LEU:HA	3:A:487:GLN:HE21	1.26	0.97
4:B:363:ASN:HD21	4:B:365:VAL:HG22	1.31	0.94
3:A:195:ILE:CD1	3:A:199:ARG:HE	1.81	0.93
3:A:195:ILE:HG23	3:A:196:GLY:N	1.84	0.92
4:B:13:LYS:HG3	4:B:85:GLN:HA	1.49	0.91
3:A:28:GLU:HG3	3:A:135:ILE:HG12	1.51	0.91
4:B:303:LEU:O	4:B:307:ARG:HB2	1.71	0.90
3:A:434:ILE:HD13	3:A:530:LYS:HB3	1.53	0.90
3:A:191:SER:HB3	3:A:198:HIS:HD1	1.37	0.90
4:B:167:ILE:HG23	4:B:212:TRP:CE3	2.07	0.90
2:P:817:MRG:N3	2:P:817:MRG:H221	1.84	0.89
4:B:21:VAL:CG1	4:B:59:PRO:HD3	2.03	0.89
2:P:808:DC:H2"	3:A:475:GLN:OE1	1.73	0.88
4:B:134:SER:OG	4:B:139:THR:HG23	1.74	0.88
3:A:452:LEU:HG	3:A:470:THR:HA	1.55	0.87
1:T:720:DG:H2'	1:T:721:DG:C8	2.10	0.87
4:B:56:TYR:HE2	4:B:126:LYS:HE3	1.39	0.86
4:B:270:ILE:HG23	4:B:271:TYR:CD1	2.11	0.85
3:A:354:TYR:HD2	3:A:371:ALA:HB2	1.40	0.85
3:A:447:ASN:ND2	3:A:450:THR:HG23	1.92	0.84
4:B:122:GLU:HA	4:B:125:ARG:HD2	1.57	0.84

Continued on next page...

Continued from previous page...

Atom-1	Atom-2	Interatomic distance (Å)	Clash overlap (Å)
3:A:406:TRP:CD1	3:A:407:GLN:HG3	2.14	0.83
4:B:103:LYS:HE2	4:B:103:LYS:HA	1.58	0.82
3:A:509:GLN:N	3:A:510:PRO:HD3	1.93	0.82
3:A:343:GLN:HG3	3:A:349:LEU:HD11	1.62	0.81
4:B:209:LEU:HD22	4:B:214:LEU:HD12	1.63	0.81
3:A:420:PRO:HA	3:A:421:PRO:C	2.02	0.81
4:B:64:LYS:HE2	4:B:69:THR:HA	1.63	0.80
4:B:85:GLN:C	4:B:87:PHE:H	1.83	0.79
4:B:302:GLU:HG2	4:B:306:ASN:ND2	1.97	0.79
3:A:195:ILE:CG2	3:A:196:GLY:H	1.94	0.79
3:A:447:ASN:HB3	3:A:450:THR:OG1	1.82	0.79
3:A:60:VAL:HG12	3:A:75:VAL:HG13	1.64	0.79
3:A:547:GLN:O	3:A:551:LEU:HG	1.82	0.79
3:A:317:VAL:HG12	3:A:318:TYR:H	1.46	0.79
3:A:191:SER:HB3	3:A:198:HIS:ND1	1.96	0.78
4:B:246:LEU:HD22	4:B:260:LEU:CD1	2.14	0.78
3:A:195:ILE:CG2	3:A:196:GLY:N	2.46	0.78
4:B:278:GLN:HB2	4:B:302:GLU:OE2	1.83	0.77
4:B:93:GLY:O	4:B:94:ILE:HD12	1.83	0.77
1:T:723:DC:H2'	1:T:724:DT:C6	2.19	0.77
4:B:253:THR:OG1	4:B:256:ASP:HB2	1.85	0.77
4:B:21:VAL:HG11	4:B:59:PRO:HD3	1.67	0.77
3:A:447:ASN:HD22	3:A:450:THR:HG23	1.47	0.76
4:B:356:ARG:HD2	4:B:361:HIS:HA	1.68	0.76
3:A:138:GLU:HG3	3:A:139:THR:H	1.52	0.75
4:B:413:GLU:HG2	4:B:414:TRP:N	2.00	0.75
4:B:21:VAL:HG13	4:B:59:PRO:HD3	1.67	0.75
3:A:94:ILE:CG2	3:A:95:PRO:HD2	2.17	0.75
3:A:444:GLY:HA2	3:A:552:VAL:HG11	1.67	0.75
4:B:175:ASN:N	4:B:176:PRO:HD3	2.01	0.75
4:B:363:ASN:ND2	4:B:365:VAL:HG22	2.02	0.74
3:A:96:HIS:CD2	3:A:97:PRO:HD2	2.21	0.74
4:B:332:GLN:HE22	4:B:424:LYS:HB3	1.53	0.74
3:A:195:ILE:HG23	3:A:196:GLY:H	1.46	0.74
4:B:363:ASN:HD21	4:B:365:VAL:CG2	2.01	0.74
1:T:714:DG:H4'	3:A:286:THR:HG21	1.70	0.74
2:P:804:DA:H2''	2:P:805:DG:OP1	1.88	0.73
2:P:806:DT:O2	3:A:448:ARG:NH2	2.21	0.73
3:A:221:HIS:CE1	3:A:228:LEU:H	2.06	0.73
3:A:220:LYS:O	3:A:220:LYS:HG2	1.88	0.73
4:B:335:GLY:O	4:B:355:ALA:HA	1.89	0.73

Continued on next page...

Continued from previous page...

Atom-1	Atom-2	Interatomic distance (Å)	Clash overlap (Å)
3:A:503:LEU:HD22	3:A:535:TRP:HB2	1.71	0.73
4:B:154:LYS:O	4:B:157:PRO:HD2	1.87	0.72
3:A:394:GLN:HB2	3:A:397:THR:OG1	1.89	0.72
3:A:195:ILE:HG13	3:A:199:ARG:HD2	1.71	0.72
4:B:369:THR:HG22	4:B:398:TRP:CH2	2.23	0.72
3:A:459:THR:CG2	3:A:463:ARG:HB3	2.19	0.72
3:A:254:VAL:HG13	3:A:283:LEU:HD22	1.70	0.72
3:A:88:TRP:HB3	4:B:143:ARG:NH1	2.04	0.72
3:A:443:ASP:OD2	3:A:444:GLY:N	2.20	0.72
3:A:181:TYR:HE2	4:B:136:ASN:HD22	1.38	0.72
4:B:426:TRP:CD1	4:B:426:TRP:N	2.54	0.71
3:A:94:ILE:HG22	3:A:95:PRO:HD2	1.72	0.71
3:A:441:TYR:HA	3:A:496:VAL:HG12	1.72	0.71
4:B:395:LYS:HG3	4:B:416:PHE:CE2	2.24	0.71
3:A:478:GLU:HG2	3:A:499:SER:HB3	1.72	0.71
4:B:164:MET:HA	4:B:167:ILE:HD12	1.72	0.71
4:B:100:LEU:HD23	4:B:103:LYS:HG3	1.71	0.71
4:B:81:ASN:HA	4:B:84:THR:HG22	1.71	0.71
4:B:109:LEU:HG	4:B:216:THR:HG21	1.72	0.71
3:A:220:LYS:HE3	3:A:222:GLN:HG2	1.73	0.70
4:B:206:ARG:HB3	4:B:206:ARG:NH1	2.06	0.70
4:B:104:LYS:HG2	4:B:192:ASP:OD1	1.91	0.70
3:A:532:TYR:HE2	3:A:534:ALA:HB2	1.56	0.70
1:T:714:DG:H4'	3:A:286:THR:CG2	2.21	0.70
4:B:254:VAL:HG12	4:B:258:GLN:OE1	1.91	0.70
3:A:317:VAL:HG12	3:A:318:TYR:N	2.05	0.70
3:A:34:LEU:HD11	3:A:62:ALA:HB2	1.74	0.70
3:A:546:GLU:HA	3:A:549:ASP:OD2	1.92	0.70
4:B:325:LEU:O	4:B:387:PRO:HA	1.92	0.70
4:B:395:LYS:HE2	4:B:399:GLU:OE2	1.92	0.70
4:B:112:GLY:C	4:B:114:ALA:H	1.93	0.69
4:B:395:LYS:HG2	4:B:399:GLU:OE1	1.91	0.69
3:A:337:TRP:CZ3	3:A:368:LEU:HD13	2.27	0.69
4:B:100:LEU:HA	4:B:103:LYS:HG2	1.74	0.69
3:A:224:GLU:O	3:A:225:PRO:C	2.30	0.69
4:B:282:LEU:CD2	4:B:295:LEU:HD23	2.23	0.69
2:P:803:DC:H2''	2:P:804:DA:OP1	1.93	0.69
3:A:198:HIS:NE2	3:A:202:ILE:HD13	2.08	0.69
4:B:240:THR:HG22	4:B:241:VAL:O	1.92	0.69
4:B:282:LEU:H	4:B:282:LEU:HD12	1.58	0.69
2:P:817:MRG:N3	2:P:817:MRG:C22	2.45	0.68

Continued on next page...

Continued from previous page...

Atom-1	Atom-2	Interatomic distance (Å)	Clash overlap (Å)
3:A:470:THR:HG22	3:A:471:ASN:ND2	2.08	0.68
3:A:417:VAL:O	3:A:417:VAL:HG13	1.93	0.68
4:B:365:VAL:HG12	4:B:393:ILE:CD1	2.23	0.68
3:A:340:GLN:HB3	3:A:351:THR:HG22	1.75	0.68
3:A:408:ALA:CB	4:B:364:ASP:HB3	2.21	0.68
3:A:503:LEU:O	3:A:507:GLN:HG3	1.93	0.68
4:B:167:ILE:HA	4:B:212:TRP:CZ3	2.28	0.68
3:A:92:LEU:CD1	4:B:133:PRO:HB3	2.23	0.68
4:B:344:GLU:OE1	4:B:344:GLU:HA	1.93	0.68
3:A:105:SER:HB2	3:A:198:HIS:ND1	2.09	0.68
3:A:532:TYR:CE2	3:A:534:ALA:HB2	2.27	0.68
4:B:422:LEU:HA	4:B:425:LEU:HD13	1.75	0.68
3:A:31:ILE:O	3:A:35:VAL:HG23	1.93	0.68
4:B:13:LYS:HB3	4:B:14:PRO:HD2	1.76	0.68
1:T:719:DG:H2''	1:T:720:DG:O5'	1.93	0.68
3:A:56:TYR:O	3:A:143:ARG:NH2	2.27	0.68
4:B:40:GLU:HA	4:B:40:GLU:OE1	1.93	0.68
4:B:178:ILE:HD11	4:B:201:LYS:NZ	2.09	0.67
3:A:484:LEU:HA	3:A:487:GLN:NE2	2.06	0.67
3:A:408:ALA:HB2	4:B:337:TRP:HH2	1.60	0.67
3:A:395:LYS:HE3	3:A:414:TRP:NE1	2.10	0.67
3:A:244:ILE:HD13	3:A:267:ALA:HB2	1.77	0.67
4:B:331:LYS:NZ	4:B:364:ASP:OD1	2.27	0.66
3:A:391:LEU:HD12	3:A:414:TRP:CE3	2.30	0.66
4:B:120:LEU:HD12	4:B:121:ASP:N	2.10	0.66
4:B:85:GLN:C	4:B:87:PHE:N	2.46	0.66
4:B:85:GLN:O	4:B:87:PHE:N	2.28	0.66
3:A:475:GLN:HB3	3:A:501:TYR:CE2	2.29	0.66
4:B:326:ILE:HG22	4:B:327:ALA:H	1.59	0.66
3:A:469:LEU:HD12	3:A:477:THR:HG22	1.77	0.66
3:A:226:PRO:HB3	3:A:235:HIS:CD2	2.30	0.66
3:A:478:GLU:O	3:A:482:ILE:HG13	1.95	0.66
3:A:273:GLY:H	3:A:338:THR:HG21	1.61	0.66
3:A:92:LEU:HD12	4:B:133:PRO:HB3	1.77	0.66
4:B:169:GLU:CG	4:B:170:PRO:HD3	2.25	0.66
4:B:334:GLN:HG2	4:B:334:GLN:O	1.94	0.66
4:B:80:LEU:O	4:B:83:ARG:N	2.28	0.65
3:A:181:TYR:HE2	4:B:136:ASN:ND2	1.92	0.65
3:A:281:LYS:O	3:A:284:ARG:HG3	1.96	0.65
3:A:395:LYS:HE3	3:A:414:TRP:CE2	2.32	0.65
3:A:221:HIS:HE1	3:A:228:LEU:HB2	1.62	0.64

Continued on next page...

Continued from previous page...

Atom-1	Atom-2	Interatomic distance (Å)	Clash overlap (Å)
2:P:822:DDG:H5'	3:A:230:MET:HE1	1.80	0.64
3:A:447:ASN:HD22	3:A:450:THR:H	1.45	0.64
2:P:822:DDG:H5'	3:A:230:MET:CE	2.27	0.64
3:A:135:ILE:C	3:A:137:ASN:H	1.97	0.64
3:A:105:SER:HB2	3:A:198:HIS:HD1	1.62	0.64
4:B:343:GLN:HG3	4:B:349:LEU:HD11	1.78	0.64
1:T:706:DC:H2'	1:T:707:DG:C8	2.33	0.64
3:A:282:LEU:HD21	3:A:295:LEU:HD23	1.79	0.63
4:B:421:PRO:HB3	4:B:424:LYS:HE3	1.79	0.63
3:A:252:TRP:HZ3	3:A:260:LEU:HD13	1.61	0.63
4:B:178:ILE:HD11	4:B:201:LYS:HD3	1.80	0.63
4:B:417:VAL:HG22	4:B:419:THR:HG23	1.81	0.63
4:B:266:TRP:HB3	4:B:426:TRP:CH2	2.34	0.63
3:A:508:ALA:C	3:A:510:PRO:HD3	2.18	0.63
4:B:85:GLN:CG	4:B:86:ASP:N	2.61	0.63
4:B:413:GLU:CG	4:B:414:TRP:N	2.61	0.63
3:A:118:VAL:HB	3:A:149:LEU:HD12	1.80	0.63
2:P:805:DG:C2'	2:P:806:DT:O5'	2.47	0.62
3:A:395:LYS:HD2	3:A:414:TRP:CZ2	2.34	0.62
4:B:3:SER:N	4:B:4:PRO:HD3	2.13	0.62
3:A:254:VAL:HG13	3:A:283:LEU:CD2	2.29	0.62
3:A:354:TYR:CD2	3:A:371:ALA:HB2	2.28	0.62
3:A:516:GLU:O	3:A:520:GLN:HG3	2.00	0.62
3:A:459:THR:HG23	3:A:463:ARG:HB3	1.81	0.62
3:A:509:GLN:N	3:A:510:PRO:CD	2.63	0.62
4:B:363:ASN:O	4:B:367:GLN:HG3	1.98	0.62
4:B:56:TYR:CE2	4:B:126:LYS:HE3	2.29	0.62
3:A:95:PRO:HA	4:B:136:ASN:O	2.00	0.62
4:B:85:GLN:CG	4:B:86:ASP:H	2.13	0.62
3:A:368:LEU:O	3:A:372:VAL:HG23	1.99	0.62
4:B:178:ILE:CD1	4:B:201:LYS:HD3	2.30	0.62
4:B:240:THR:HG22	4:B:241:VAL:N	2.14	0.62
4:B:339:TYR:HB2	4:B:352:GLY:N	2.15	0.62
3:A:21:VAL:HG13	3:A:59:PRO:HD3	1.82	0.62
4:B:13:LYS:N	4:B:85:GLN:HB2	2.15	0.61
4:B:246:LEU:HB3	4:B:247:PRO:HD2	1.81	0.61
4:B:326:ILE:HG22	4:B:327:ALA:N	2.15	0.61
4:B:361:HIS:CD2	4:B:361:HIS:H	2.16	0.61
3:A:255:ASN:HA	3:A:258:CYS:SG	2.40	0.61
4:B:244:ILE:HG13	4:B:426:TRP:O	2.01	0.61
4:B:276:VAL:HG13	4:B:277:ARG:H	1.66	0.61

Continued on next page...

Continued from previous page...

Atom-1	Atom-2	Interatomic distance (Å)	Clash overlap (Å)
4:B:330:GLN:HB2	4:B:338:THR:OG1	2.01	0.61
1:T:712:DC:H2'	1:T:713:DC:C6	2.35	0.61
4:B:339:TYR:HE2	4:B:378:GLU:OE1	1.83	0.61
3:A:244:ILE:HG12	3:A:244:ILE:O	1.99	0.61
4:B:169:GLU:HG3	4:B:170:PRO:HD3	1.83	0.60
3:A:59:PRO:HG2	3:A:76:ASP:HB3	1.83	0.60
4:B:85:GLN:HG3	4:B:86:ASP:H	1.65	0.60
4:B:282:LEU:HD21	4:B:295:LEU:HD23	1.83	0.60
2:P:812:DT:H2'	2:P:813:DT:C6	2.36	0.60
3:A:107:THR:HG21	3:A:202:ILE:HG12	1.82	0.60
4:B:406:TRP:O	4:B:407:GLN:HG3	2.00	0.60
4:B:104:LYS:HB2	4:B:192:ASP:HA	1.84	0.60
3:A:63:ILE:HG22	3:A:64:LYS:N	2.17	0.60
4:B:97:PRO:O	4:B:99:GLY:N	2.35	0.60
3:A:277:ARG:NH2	3:A:355:ALA:O	2.34	0.59
3:A:446:ALA:CB	3:A:453:GLY:HA3	2.32	0.59
4:B:125:ARG:HG2	4:B:146:TYR:O	2.02	0.59
4:B:112:GLY:C	4:B:114:ALA:N	2.56	0.59
3:A:118:VAL:HB	3:A:149:LEU:CD1	2.31	0.59
4:B:421:PRO:C	4:B:423:VAL:H	2.04	0.59
4:B:339:TYR:HB2	4:B:352:GLY:H	1.67	0.59
3:A:271:TYR:CE1	3:A:314:VAL:HG22	2.37	0.59
3:A:452:LEU:HB3	3:A:469:LEU:O	2.02	0.59
3:A:535:TRP:HB3	4:B:422:LEU:CD2	2.33	0.59
3:A:181:TYR:CE2	4:B:136:ASN:ND2	2.69	0.59
4:B:348:ASN:HD22	4:B:351:THR:HG22	1.67	0.59
3:A:426:TRP:HA	3:A:426:TRP:CE3	2.37	0.59
3:A:529:GLU:O	3:A:530:LYS:HG3	2.03	0.59
3:A:195:ILE:CD1	3:A:199:ARG:NE	2.53	0.58
3:A:454:LYS:HG3	3:A:552:VAL:HG13	1.84	0.58
4:B:319:TYR:O	4:B:321:PRO:HD3	2.02	0.58
2:P:805:DG:H21	3:A:448:ARG:HH12	1.50	0.58
3:A:244:ILE:CD1	3:A:267:ALA:HB2	2.33	0.58
3:A:455:ALA:HB1	3:A:481:ALA:HB2	1.84	0.58
3:A:218:ASP:N	3:A:218:ASP:OD1	2.37	0.58
3:A:33:ALA:O	3:A:37:ILE:HG13	2.03	0.58
3:A:288:ALA:C	3:A:290:THR:H	2.07	0.58
4:B:8:VAL:HG21	4:B:159:ILE:HG12	1.85	0.58
4:B:246:LEU:HD21	4:B:264:LEU:HD21	1.84	0.58
3:A:487:GLN:HG3	3:A:488:ASP:OD1	2.02	0.58
4:B:345:PRO:O	4:B:346:PHE:HB2	2.03	0.58

Continued on next page...

Continued from previous page...

Atom-1	Atom-2	Interatomic distance (Å)	Clash overlap (Å)
3:A:23:GLN:NE2	3:A:59:PRO:HA	2.18	0.58
4:B:86:ASP:O	4:B:89:GLU:N	2.32	0.58
3:A:475:GLN:HB3	3:A:501:TYR:CD2	2.38	0.58
4:B:13:LYS:HG3	4:B:85:GLN:CA	2.28	0.58
4:B:273:GLY:O	4:B:309:ILE:HD13	2.04	0.57
2:P:805:DG:H2''	2:P:806:DT:O5'	2.03	0.57
4:B:277:ARG:HA	4:B:280:SER:HB3	1.86	0.57
3:A:426:TRP:HE3	3:A:426:TRP:HA	1.69	0.57
3:A:58:THR:HG23	3:A:59:PRO:HD2	1.86	0.57
1:T:720:DG:H1	2:P:808:DC:N4	2.02	0.57
4:B:122:GLU:HA	4:B:125:ARG:CD	2.34	0.57
4:B:163:SER:O	4:B:167:ILE:HG13	2.05	0.57
4:B:270:ILE:HG23	4:B:271:TYR:HD1	1.62	0.57
3:A:484:LEU:O	3:A:486:LEU:N	2.38	0.57
3:A:497:THR:O	3:A:535:TRP:HA	2.05	0.57
4:B:274:ILE:HG13	4:B:309:ILE:HD12	1.86	0.57
3:A:430:GLU:OE2	3:A:530:LYS:HG2	2.05	0.56
3:A:342:TYR:HB3	3:A:348:ASN:HB3	1.86	0.56
3:A:253:THR:O	3:A:257:ILE:HG12	2.05	0.56
4:B:24:TRP:HH2	4:B:61:PHE:CE1	2.22	0.56
4:B:330:GLN:O	4:B:337:TRP:HA	2.04	0.56
4:B:167:ILE:HG23	4:B:212:TRP:HE3	1.64	0.56
3:A:441:TYR:HA	3:A:496:VAL:CG1	2.33	0.56
4:B:209:LEU:HD22	4:B:214:LEU:CD1	2.34	0.56
4:B:278:GLN:OE1	4:B:298:GLU:HB2	2.06	0.56
2:P:804:DA:H2'	2:P:805:DG:C8	2.40	0.56
3:A:207:GLN:HB3	3:A:211:ARG:HH21	1.70	0.56
3:A:521:ILE:O	3:A:525:LEU:HG	2.05	0.56
4:B:118:VAL:HB	4:B:149:LEU:HD12	1.87	0.56
4:B:78:ARG:HD3	4:B:411:ILE:HG22	1.87	0.56
3:A:254:VAL:HB	3:A:289:LEU:HA	1.86	0.56
4:B:120:LEU:HD12	4:B:121:ASP:H	1.71	0.56
3:A:47:ILE:HG22	3:A:146:TYR:HA	1.88	0.56
3:A:91:GLN:HB2	3:A:161:GLN:HE22	1.71	0.56
3:A:342:TYR:HA	3:A:349:LEU:HD12	1.87	0.56
3:A:376:THR:O	3:A:377:THR:C	2.44	0.56
3:A:493:VAL:HG12	3:A:494:ASN:N	2.21	0.56
4:B:64:LYS:HE2	4:B:69:THR:CA	2.35	0.56
4:B:395:LYS:HE2	4:B:399:GLU:CD	2.26	0.56
3:A:484:LEU:C	3:A:486:LEU:H	2.09	0.55
3:A:549:ASP:O	3:A:553:SER:N	2.30	0.55

Continued on next page...

Continued from previous page...

Atom-1	Atom-2	Interatomic distance (Å)	Clash overlap (Å)
4:B:266:TRP:CE3	4:B:426:TRP:HH2	2.23	0.55
3:A:363:ASN:O	3:A:367:GLN:HG3	2.06	0.55
3:A:5:ILE:HD13	3:A:163:SER:HB3	1.87	0.55
2:P:816:DG:H2'	2:P:817:MRG:H8	1.88	0.55
3:A:447:ASN:HD22	3:A:450:THR:CG2	2.19	0.55
3:A:447:ASN:ND2	3:A:450:THR:H	2.03	0.55
4:B:81:ASN:HA	4:B:84:THR:CG2	2.36	0.55
3:A:305:GLU:O	3:A:308:GLU:HB2	2.06	0.55
4:B:330:GLN:CD	4:B:340:GLN:HE22	2.10	0.55
4:B:348:ASN:HD22	4:B:351:THR:CG2	2.20	0.55
3:A:362:THR:HB	3:A:366:LYS:HD2	1.88	0.55
3:A:454:LYS:HE3	3:A:552:VAL:HA	1.88	0.55
4:B:118:VAL:O	4:B:119:PRO:C	2.45	0.55
4:B:328:GLU:HG3	4:B:342:TYR:HE2	1.72	0.55
3:A:482:ILE:O	3:A:486:LEU:HG	2.07	0.55
3:A:548:VAL:O	3:A:552:VAL:HG23	2.07	0.55
4:B:100:LEU:HA	4:B:103:LYS:CG	2.37	0.55
4:B:314:VAL:HG22	4:B:315:HIS:N	2.22	0.54
4:B:282:LEU:N	4:B:282:LEU:HD12	2.22	0.54
4:B:270:ILE:O	4:B:270:ILE:HG13	2.07	0.54
2:P:817:MRG:H4'	3:A:289:LEU:HD21	1.87	0.54
4:B:266:TRP:C	4:B:268:SER:H	2.09	0.54
2:P:805:DG:N2	3:A:448:ARG:HH22	2.06	0.54
3:A:276:VAL:HG22	3:A:353:LYS:HZ3	1.71	0.54
4:B:210:LEU:C	4:B:210:LEU:HD12	2.27	0.54
4:B:413:GLU:HG2	4:B:414:TRP:H	1.71	0.54
3:A:68:SER:C	3:A:70:LYS:H	2.11	0.54
4:B:307:ARG:HH11	4:B:307:ARG:HG2	1.73	0.54
4:B:178:ILE:HD11	4:B:201:LYS:CD	2.37	0.54
1:T:708:DG:H2'	1:T:709:DC:C6	2.43	0.54
4:B:388:LYS:CD	4:B:388:LYS:O	2.55	0.54
3:A:452:LEU:HG	3:A:470:THR:CA	2.34	0.53
3:A:399:GLU:HA	3:A:402:TRP:CD1	2.42	0.53
3:A:435:VAL:HG22	4:B:290:THR:HG21	1.90	0.53
3:A:358:ARG:HH21	3:A:370:GLU:HG2	1.72	0.53
4:B:180:ILE:HG12	4:B:189:VAL:HG13	1.91	0.53
3:A:382:ILE:HA	4:B:136:ASN:HA	1.89	0.53
3:A:543:GLY:HA3	4:B:283:LEU:HD12	1.90	0.53
4:B:375:ILE:HG12	4:B:389:PHE:CZ	2.44	0.53
3:A:193:LEU:HB2	3:A:198:HIS:HB2	1.91	0.53
3:A:135:ILE:C	3:A:137:ASN:N	2.63	0.53

Continued on next page...

Continued from previous page...

Atom-1	Atom-2	Interatomic distance (Å)	Clash overlap (Å)
3:A:439:THR:HG21	4:B:289:LEU:HG	1.91	0.53
3:A:24:TRP:HZ3	3:A:26:LEU:HD21	1.74	0.53
4:B:365:VAL:HG12	4:B:393:ILE:HD12	1.89	0.53
3:A:475:GLN:C	3:A:477:THR:H	2.13	0.53
1:T:708:DG:H5'	3:A:89:GLU:HG3	1.91	0.52
4:B:254:VAL:HB	4:B:289:LEU:HA	1.89	0.52
3:A:221:HIS:HE1	3:A:228:LEU:H	1.53	0.52
4:B:422:LEU:HD12	4:B:425:LEU:HD11	1.90	0.52
3:A:94:ILE:HG23	3:A:95:PRO:HD2	1.89	0.52
3:A:27:THR:O	3:A:31:ILE:HG13	2.09	0.52
3:A:336:GLN:C	3:A:337:TRP:CD1	2.82	0.52
4:B:41:MET:HB3	4:B:47:ILE:HG12	1.91	0.52
4:B:174:GLN:NE2	4:B:175:ASN:OD1	2.42	0.52
3:A:38:CYS:SG	3:A:132:ILE:HD11	2.50	0.52
3:A:391:LEU:HB3	3:A:393:ILE:HG22	1.90	0.52
4:B:169:GLU:HG3	4:B:170:PRO:CD	2.40	0.52
4:B:125:ARG:NE	4:B:147:ASN:HA	2.24	0.52
4:B:307:ARG:HG2	4:B:307:ARG:NH1	2.25	0.52
1:T:708:DG:H21	3:A:94:ILE:HD11	1.74	0.52
3:A:279:LEU:HB2	3:A:302:GLU:OE2	2.10	0.52
4:B:413:GLU:CG	4:B:414:TRP:H	2.21	0.52
3:A:257:ILE:O	3:A:261:VAL:HG23	2.09	0.52
3:A:317:VAL:CG1	3:A:318:TYR:H	2.20	0.52
3:A:517:LEU:HD22	3:A:521:ILE:HD11	1.92	0.52
2:P:810:DT:OP1	3:A:361:HIS:NE2	2.41	0.52
4:B:175:ASN:N	4:B:176:PRO:CD	2.72	0.52
4:B:339:TYR:O	4:B:351:THR:HB	2.10	0.52
3:A:92:LEU:HD12	4:B:133:PRO:CB	2.40	0.52
3:A:68:SER:C	3:A:70:LYS:N	2.61	0.51
4:B:279:LEU:HA	4:B:282:LEU:HD13	1.91	0.51
2:P:805:DG:C6	2:P:806:DT:C4	2.98	0.51
4:B:304:ALA:HA	4:B:307:ARG:HD3	1.93	0.51
3:A:397:THR:HG21	3:A:424:LYS:HA	1.92	0.51
4:B:317:VAL:O	4:B:317:VAL:HG23	2.10	0.51
3:A:344:GLU:OE1	3:A:344:GLU:HA	2.10	0.51
4:B:332:GLN:OE1	4:B:332:GLN:HA	2.11	0.51
3:A:432:GLU:OE2	3:A:433:PRO:HD2	2.09	0.51
4:B:240:THR:HG22	4:B:241:VAL:H	1.74	0.51
3:A:105:SER:CB	3:A:198:HIS:ND1	2.74	0.51
3:A:255:ASN:HB3	3:A:289:LEU:HB3	1.93	0.51
1:T:720:DG:H1	2:P:808:DC:H42	1.58	0.51

Continued on next page...

Continued from previous page...

Atom-1	Atom-2	Interatomic distance (Å)	Clash overlap (Å)
4:B:94:ILE:HG21	4:B:181:TYR:HE1	1.76	0.51
3:A:380:ILE:O	3:A:384:GLY:N	2.44	0.51
4:B:239:TRP:CH2	4:B:353:LYS:O	2.63	0.51
4:B:27:THR:HG22	4:B:28:GLU:N	2.26	0.51
4:B:246:LEU:HD23	4:B:263:LYS:HE2	1.92	0.51
3:A:394:GLN:C	3:A:396:GLU:H	2.14	0.51
4:B:374:LYS:O	4:B:378:GLU:HG3	2.11	0.51
3:A:226:PRO:HB3	3:A:235:HIS:NE2	2.26	0.51
4:B:369:THR:HG22	4:B:398:TRP:CZ3	2.45	0.51
4:B:266:TRP:CE3	4:B:426:TRP:CH2	2.98	0.51
4:B:108:VAL:HG22	4:B:188:TYR:CD2	2.46	0.51
3:A:480:GLN:O	3:A:483:TYR:HB3	2.10	0.50
4:B:112:GLY:O	4:B:114:ALA:N	2.44	0.50
4:B:390:LYS:HD2	4:B:415:GLU:OE2	2.11	0.50
4:B:303:LEU:O	4:B:303:LEU:HD12	2.11	0.50
3:A:280:SER:O	3:A:283:LEU:N	2.44	0.50
3:A:438:GLU:OE2	3:A:461:LYS:HE2	2.12	0.50
3:A:369:THR:CG2	3:A:411:ILE:HD11	2.42	0.50
4:B:333:GLY:O	4:B:336:GLN:HB2	2.10	0.50
3:A:446:ALA:HA	3:A:453:GLY:HA3	1.92	0.50
4:B:389:PHE:H	4:B:389:PHE:HD1	1.59	0.50
3:A:298:GLU:CD	3:A:298:GLU:H	2.14	0.50
3:A:333:GLY:O	3:A:334:GLN:HG2	2.12	0.50
4:B:111:VAL:O	4:B:113:ASP:N	2.44	0.50
3:A:24:TRP:CZ3	3:A:26:LEU:HD21	2.46	0.50
4:B:259:LYS:O	4:B:261:VAL:N	2.44	0.50
3:A:335:GLY:O	3:A:337:TRP:CD1	2.65	0.50
3:A:434:ILE:HB	3:A:494:ASN:HD21	1.76	0.50
4:B:206:ARG:HH11	4:B:206:ARG:HB3	1.77	0.50
3:A:24:TRP:O	3:A:24:TRP:CE3	2.65	0.50
2:P:809:DC:H2''	2:P:810:DT:C5'	2.42	0.50
4:B:244:ILE:HG12	4:B:244:ILE:O	2.11	0.50
4:B:103:LYS:HE2	4:B:103:LYS:CA	2.36	0.50
3:A:518:VAL:O	3:A:522:ILE:HG13	2.11	0.50
3:A:376:THR:O	3:A:380:ILE:HG13	2.12	0.50
4:B:63:ILE:HD12	4:B:407:GLN:HA	1.94	0.49
4:B:13:LYS:NZ	4:B:82:LYS:O	2.34	0.49
4:B:85:GLN:HG2	4:B:86:ASP:N	2.26	0.49
3:A:444:GLY:HA3	3:A:455:ALA:CB	2.42	0.49
4:B:47:ILE:HA	4:B:145:GLN:O	2.12	0.49
4:B:426:TRP:HD1	4:B:426:TRP:N	2.05	0.49

Continued on next page...

Continued from previous page...

Atom-1	Atom-2	Interatomic distance (Å)	Clash overlap (Å)
3:A:94:ILE:HG22	3:A:95:PRO:CD	2.41	0.49
3:A:451:LYS:CB	3:A:452:LEU:HD12	2.42	0.49
3:A:425:LEU:HD13	3:A:509:GLN:HE22	1.76	0.49
3:A:252:TRP:HB3	3:A:257:ILE:HD11	1.94	0.49
1:T:718:DA:H2''	1:T:719:DG:C5'	2.42	0.49
4:B:47:ILE:HG22	4:B:145:GLN:O	2.11	0.49
4:B:103:LYS:HD3	4:B:190:GLY:C	2.33	0.49
3:A:427:TYR:HE1	3:A:522:ILE:HG23	1.77	0.49
4:B:332:GLN:NE2	4:B:424:LYS:HB3	2.25	0.49
4:B:365:VAL:HG12	4:B:393:ILE:HD11	1.93	0.49
4:B:13:LYS:HA	4:B:85:GLN:NE2	2.27	0.49
4:B:334:GLN:CG	4:B:334:GLN:O	2.60	0.49
4:B:292:VAL:HG12	4:B:294:PRO:HD3	1.95	0.49
4:B:266:TRP:CD2	4:B:426:TRP:HH2	2.30	0.49
3:A:96:HIS:HE1	3:A:350:LYS:HG3	1.78	0.49
3:A:188:TYR:C	3:A:188:TYR:CD1	2.86	0.49
4:B:100:LEU:HD13	4:B:381:VAL:HG13	1.94	0.49
3:A:79:GLU:OE1	3:A:79:GLU:HA	2.12	0.49
2:P:814:DC:H2'	2:P:815:DG:C8	2.47	0.49
2:P:820:DC:H4'	3:A:266:TRP:CE2	2.48	0.49
3:A:517:LEU:CD2	3:A:521:ILE:HD11	2.43	0.48
4:B:34:LEU:HD11	4:B:60:VAL:CG2	2.43	0.48
3:A:198:HIS:C	3:A:198:HIS:CD2	2.87	0.48
4:B:422:LEU:CA	4:B:425:LEU:HD13	2.42	0.48
4:B:13:LYS:NZ	4:B:16:MET:SD	2.80	0.48
4:B:111:VAL:HG21	4:B:164:MET:HE1	1.96	0.48
3:A:475:GLN:O	3:A:477:THR:N	2.47	0.48
3:A:354:TYR:HD2	3:A:371:ALA:CB	2.20	0.48
4:B:410:TRP:O	4:B:411:ILE:HG13	2.13	0.48
4:B:239:TRP:HH2	4:B:353:LYS:O	1.97	0.48
3:A:406:TRP:NE1	3:A:407:GLN:HG3	2.28	0.48
3:A:273:GLY:N	3:A:338:THR:HG21	2.27	0.48
4:B:376:THR:OG1	4:B:389:PHE:CZ	2.66	0.48
4:B:43:LYS:O	4:B:43:LYS:HG2	2.14	0.48
3:A:345:PRO:O	3:A:346:PHE:HB2	2.13	0.48
4:B:86:ASP:HB3	4:B:90:VAL:H	1.79	0.48
3:A:280:SER:OG	3:A:281:LYS:N	2.46	0.48
4:B:266:TRP:CB	4:B:426:TRP:CH2	2.97	0.48
3:A:406:TRP:O	4:B:331:LYS:HB3	2.14	0.48
3:A:460:ASN:HD22	4:B:288:ALA:HB2	1.78	0.48
3:A:115:TYR:CE2	5:A:823:TNV:H8'1	2.49	0.48

Continued on next page...

Continued from previous page...

Atom-1	Atom-2	Interatomic distance (Å)	Clash overlap (Å)
4:B:203:GLU:HG2	4:B:203:GLU:O	2.13	0.48
4:B:109:LEU:CG	4:B:216:THR:HG21	2.40	0.48
3:A:131:THR:OG1	3:A:143:ARG:HG2	2.14	0.48
4:B:60:VAL:O	4:B:60:VAL:HG23	2.11	0.48
3:A:261:VAL:HG12	3:A:265:ASN:ND2	2.29	0.47
3:A:225:PRO:HG3	3:A:227:PHE:CE1	2.48	0.47
4:B:34:LEU:HD11	4:B:60:VAL:HG21	1.96	0.47
3:A:465:LYS:O	3:A:466:VAL:HG13	2.14	0.47
3:A:28:GLU:CG	3:A:135:ILE:HG12	2.34	0.47
3:A:469:LEU:CD2	3:A:480:GLN:HG2	2.44	0.47
2:P:803:DC:C2'	2:P:804:DA:OP1	2.61	0.47
3:A:417:VAL:O	3:A:417:VAL:CG1	2.61	0.47
4:B:406:TRP:CH2	4:B:412:PRO:HD2	2.49	0.47
3:A:86:ASP:O	4:B:55:PRO:HB3	2.14	0.47
4:B:135:ILE:O	4:B:135:ILE:HG13	2.14	0.47
3:A:444:GLY:HA3	3:A:455:ALA:HB2	1.95	0.47
3:A:65:ARG:HB2	3:A:68:SER:HB2	1.95	0.47
3:A:399:GLU:HA	3:A:402:TRP:NE1	2.29	0.47
4:B:307:ARG:O	4:B:311:LYS:NZ	2.47	0.47
3:A:368:LEU:HD21	3:A:391:LEU:HD22	1.96	0.47
4:B:388:LYS:HD3	4:B:388:LYS:O	2.15	0.47
3:A:90:VAL:HG22	3:A:90:VAL:O	2.14	0.47
4:B:282:LEU:HD22	4:B:295:LEU:HD23	1.94	0.47
4:B:97:PRO:C	4:B:99:GLY:H	2.18	0.47
4:B:126:LYS:HA	4:B:145:GLN:OE1	2.14	0.47
4:B:157:PRO:HB3	4:B:184:MET:O	2.14	0.47
3:A:396:GLU:O	3:A:397:THR:C	2.52	0.47
3:A:276:VAL:CG2	3:A:353:LYS:NZ	2.78	0.47
3:A:435:VAL:HG22	4:B:290:THR:CG2	2.44	0.47
4:B:60:VAL:HG12	4:B:75:VAL:HG13	1.97	0.47
4:B:234:LEU:HD11	4:B:377:THR:HG21	1.97	0.47
4:B:175:ASN:HB3	4:B:178:ILE:HD12	1.97	0.47
4:B:169:GLU:HG2	4:B:170:PRO:HD3	1.94	0.47
4:B:401:TRP:O	4:B:404:GLU:HB2	2.15	0.47
3:A:194:GLU:HA	3:A:194:GLU:OE2	2.15	0.47
4:B:82:LYS:NZ	4:B:413:GLU:OE1	2.48	0.47
4:B:153:TRP:O	4:B:157:PRO:HD3	2.14	0.47
4:B:245:VAL:HG22	4:B:246:LEU:N	2.30	0.47
4:B:305:GLU:C	4:B:307:ARG:N	2.65	0.47
3:A:247:PRO:HG2	3:A:260:LEU:HD11	1.97	0.47
2:P:812:DT:H2'	2:P:813:DT:H6	1.78	0.47

Continued on next page...

Continued from previous page...

Atom-1	Atom-2	Interatomic distance (Å)	Clash overlap (Å)
3:A:441:TYR:HB2	3:A:458:VAL:CG2	2.45	0.47
3:A:429:LEU:HD11	3:A:506:ILE:HG22	1.96	0.47
2:P:808:DC:O2	2:P:808:DC:H2'	2.14	0.46
4:B:279:LEU:HD23	4:B:299:ALA:HB1	1.97	0.46
4:B:136:ASN:O	4:B:136:ASN:CG	2.54	0.46
4:B:60:VAL:CG2	4:B:60:VAL:O	2.61	0.46
3:A:407:GLN:HG2	4:B:392:PRO:O	2.15	0.46
4:B:268:SER:O	4:B:271:TYR:C	2.54	0.46
3:A:57:ASN:ND2	3:A:131:THR:OG1	2.48	0.46
3:A:363:ASN:HB2	3:A:511:ASP:OD2	2.16	0.46
4:B:116:PHE:CZ	4:B:151:GLN:HG3	2.51	0.46
3:A:35:VAL:HG22	3:A:132:ILE:HG21	1.97	0.46
3:A:498:ASP:HA	3:A:536:VAL:O	2.15	0.46
4:B:91:GLN:HG2	4:B:91:GLN:O	2.16	0.46
3:A:484:LEU:HD23	3:A:487:GLN:NE2	2.29	0.46
3:A:420:PRO:HA	3:A:421:PRO:O	2.14	0.46
4:B:64:LYS:NZ	4:B:69:THR:HG22	2.31	0.46
4:B:153:TRP:CE3	4:B:156:SER:N	2.83	0.46
3:A:511:ASP:HA	3:A:522:ILE:HG21	1.96	0.46
3:A:472:THR:OG1	3:A:473:THR:N	2.48	0.46
4:B:235:HIS:N	4:B:236:PRO:HD3	2.30	0.46
4:B:333:GLY:H	4:B:336:GLN:CB	2.29	0.46
3:A:253:THR:HG23	3:A:256:ASP:OD2	2.15	0.46
3:A:92:LEU:HD23	3:A:92:LEU:N	2.30	0.46
3:A:65:ARG:CZ	3:A:70:LYS:HD2	2.45	0.46
4:B:388:LYS:HE2	4:B:415:GLU:OE1	2.15	0.46
4:B:296:THR:O	4:B:300:GLU:HB2	2.15	0.46
4:B:297:GLU:O	4:B:301:LEU:HB2	2.15	0.46
4:B:297:GLU:HA	4:B:300:GLU:HB3	1.97	0.46
1:T:704:DG:O6	3:A:30:LYS:NZ	2.48	0.46
4:B:86:ASP:HB3	4:B:90:VAL:HG23	1.97	0.46
3:A:475:GLN:C	3:A:477:THR:N	2.69	0.46
4:B:125:ARG:HE	4:B:147:ASN:HA	1.81	0.46
4:B:278:GLN:O	4:B:299:ALA:HB2	2.14	0.46
3:A:427:TYR:HE1	3:A:522:ILE:CG2	2.29	0.46
3:A:276:VAL:CG2	3:A:353:LYS:HZ3	2.29	0.46
3:A:409:THR:O	4:B:364:ASP:OD2	2.33	0.46
4:B:421:PRO:HA	4:B:423:VAL:HG22	1.98	0.46
3:A:484:LEU:C	3:A:486:LEU:N	2.69	0.46
3:A:34:LEU:HB3	3:A:132:ILE:HD13	1.98	0.46
4:B:318:TYR:N	4:B:318:TYR:CD1	2.84	0.46

Continued on next page...

Continued from previous page...

Atom-1	Atom-2	Interatomic distance (Å)	Clash overlap (Å)
4:B:143:ARG:O	4:B:144:TYR:CG	2.69	0.46
2:P:805:DG:C5	2:P:806:DT:C5	3.04	0.46
3:A:306:ASN:O	3:A:308:GLU:N	2.49	0.46
4:B:53:GLU:N	4:B:53:GLU:OE2	2.48	0.46
3:A:452:LEU:N	3:A:452:LEU:HD12	2.31	0.45
3:A:476:LYS:O	3:A:480:GLN:HB2	2.15	0.45
4:B:282:LEU:H	4:B:282:LEU:CD1	2.26	0.45
4:B:153:TRP:HE3	4:B:156:SER:HB2	1.81	0.45
3:A:391:LEU:HA	3:A:392:PRO:HD3	1.59	0.45
4:B:240:THR:CG2	4:B:241:VAL:N	2.79	0.45
3:A:426:TRP:O	3:A:427:TYR:HB3	2.15	0.45
3:A:446:ALA:HB2	3:A:453:GLY:HA3	1.98	0.45
3:A:354:TYR:HE1	3:A:356:ARG:HB3	1.81	0.45
4:B:109:LEU:CD1	4:B:216:THR:HG21	2.47	0.45
4:B:362:THR:HB	4:B:366:LYS:HD3	1.97	0.45
4:B:93:GLY:C	4:B:94:ILE:HD12	2.35	0.45
1:T:707:DG:O3'	3:A:89:GLU:HG2	2.17	0.45
4:B:329:ILE:HG22	4:B:392:PRO:HD3	1.97	0.45
3:A:394:GLN:C	3:A:396:GLU:N	2.69	0.45
3:A:63:ILE:CG2	3:A:64:LYS:N	2.80	0.45
3:A:489:SER:HB2	3:A:493:VAL:HG22	1.99	0.45
3:A:396:GLU:O	3:A:398:TRP:N	2.50	0.45
3:A:358:ARG:NH1	4:B:396:GLU:HG2	2.31	0.45
4:B:421:PRO:CB	4:B:424:LYS:HG3	2.47	0.45
4:B:275:LYS:HB2	4:B:306:ASN:HD21	1.81	0.45
3:A:244:ILE:HD12	3:A:266:TRP:CD1	2.51	0.45
4:B:350:LYS:HB3	4:B:383:TRP:HH2	1.82	0.45
3:A:282:LEU:CD1	3:A:296:THR:HG23	2.46	0.45
4:B:275:LYS:N	4:B:306:ASN:OD1	2.49	0.45
4:B:5:ILE:HG22	4:B:6:GLU:H	1.81	0.45
3:A:519:ASN:HA	3:A:522:ILE:HD12	1.98	0.45
3:A:81:ASN:OD1	3:A:154:LYS:HB2	2.17	0.45
3:A:406:TRP:C	4:B:331:LYS:HD3	2.37	0.45
3:A:442:VAL:CG2	3:A:481:ALA:HB1	2.47	0.45
1:T:719:DG:C6	1:T:720:DG:C6	3.05	0.45
3:A:438:GLU:OE2	3:A:459:THR:HG21	2.17	0.45
3:A:427:TYR:CD2	3:A:427:TYR:C	2.90	0.45
4:B:211:ARG:HA	4:B:211:ARG:HD3	1.71	0.45
4:B:323:LYS:HD2	4:B:323:LYS:HA	1.79	0.45
4:B:333:GLY:H	4:B:336:GLN:HB3	1.82	0.45
4:B:81:ASN:CA	4:B:84:THR:HG22	2.42	0.45

Continued on next page...

Continued from previous page...

Atom-1	Atom-2	Interatomic distance (Å)	Clash overlap (Å)
3:A:93:GLY:C	4:B:137:ASN:OD1	2.55	0.45
4:B:14:PRO:HD3	4:B:85:GLN:NE2	2.32	0.45
3:A:249:LYS:HE3	3:A:256:ASP:OD1	2.18	0.45
1:T:713:DC:H2'	1:T:714:DG:C8	2.52	0.45
4:B:154:LYS:C	4:B:157:PRO:HD2	2.38	0.45
3:A:394:GLN:HA	3:A:394:GLN:OE1	2.16	0.45
4:B:330:GLN:OE1	4:B:340:GLN:NE2	2.49	0.44
3:A:522:ILE:O	3:A:523:GLU:C	2.56	0.44
1:T:716:DA:C2'	1:T:717:DC:O4'	2.65	0.44
3:A:406:TRP:HB2	4:B:424:LYS:NZ	2.32	0.44
4:B:13:LYS:HE3	4:B:13:LYS:HB2	1.79	0.44
3:A:391:LEU:C	3:A:417:VAL:HG12	2.38	0.44
3:A:522:ILE:O	3:A:525:LEU:N	2.50	0.44
4:B:361:HIS:HD2	4:B:361:HIS:H	1.62	0.44
3:A:417:VAL:HG13	3:A:419:THR:HG22	2.00	0.44
4:B:149:LEU:HA	4:B:149:LEU:HD23	1.81	0.44
3:A:112:GLY:O	3:A:113:ASP:C	2.54	0.44
4:B:70:LYS:HD3	4:B:70:LYS:HA	1.73	0.44
3:A:431:LYS:HD3	3:A:431:LYS:HA	1.77	0.44
3:A:451:LYS:HB2	3:A:452:LEU:HD12	2.00	0.44
1:T:706:DC:H2'	1:T:707:DG:H8	1.82	0.44
3:A:459:THR:HG21	3:A:463:ARG:HB3	1.98	0.44
4:B:108:VAL:HG13	4:B:188:TYR:CE2	2.52	0.44
4:B:66:LYS:CG	4:B:66:LYS:O	2.66	0.44
1:T:705:DT:C2	3:A:74:LEU:HD13	2.52	0.44
4:B:80:LEU:HD23	4:B:153:TRP:CD1	2.52	0.44
3:A:498:ASP:HB2	3:A:538:ALA:HB2	1.99	0.44
3:A:88:TRP:CB	4:B:143:ARG:NH1	2.78	0.44
4:B:266:TRP:C	4:B:268:SER:N	2.71	0.44
2:P:805:DG:C2	2:P:806:DT:C2	3.06	0.44
3:A:224:GLU:N	3:A:225:PRO:CD	2.81	0.44
3:A:61:PHE:N	3:A:61:PHE:CD1	2.86	0.44
3:A:257:ILE:HB	3:A:283:LEU:HD21	1.99	0.44
4:B:178:ILE:HG23	4:B:190:GLY:O	2.18	0.44
4:B:3:SER:O	4:B:5:ILE:HG13	2.18	0.44
4:B:91:GLN:O	4:B:92:LEU:HD23	2.17	0.44
3:A:199:ARG:O	3:A:202:ILE:HG22	2.18	0.44
4:B:50:ILE:HD13	4:B:145:GLN:HG3	2.00	0.44
4:B:209:LEU:HB3	4:B:214:LEU:HD12	2.00	0.44
3:A:221:HIS:CE1	3:A:228:LEU:HB2	2.47	0.44
4:B:259:LYS:C	4:B:261:VAL:N	2.70	0.44

Continued on next page...

Continued from previous page...

Atom-1	Atom-2	Interatomic distance (Å)	Clash overlap (Å)
3:A:90:VAL:HG22	4:B:140:PRO:HB2	1.99	0.44
3:A:386:THR:HA	3:A:387:PRO:HD3	1.78	0.44
3:A:282:LEU:CD2	3:A:295:LEU:HD23	2.46	0.44
1:T:708:DG:H2'	1:T:709:DC:H6	1.82	0.44
3:A:369:THR:HG23	3:A:411:ILE:HD11	1.98	0.44
3:A:372:VAL:HG13	3:A:389:PHE:CZ	2.53	0.43
4:B:255:ASN:ND2	4:B:259:LYS:HE2	2.32	0.43
3:A:546:GLU:O	3:A:550:LYS:HG3	2.18	0.43
1:T:718:DA:H2''	1:T:719:DG:O5'	2.17	0.43
4:B:269:GLN:HB2	4:B:269:GLN:HE21	1.58	0.43
4:B:270:ILE:HD12	4:B:314:VAL:HG21	2.00	0.43
3:A:435:VAL:HG12	3:A:436:GLY:N	2.33	0.43
4:B:66:LYS:HG3	4:B:68:SER:HB3	2.00	0.43
3:A:320:ASP:HA	3:A:321:PRO:HD2	1.82	0.43
1:T:707:DG:H2'	1:T:708:DG:C8	2.53	0.43
3:A:21:VAL:CG2	3:A:22:LYS:N	2.81	0.43
3:A:288:ALA:HB3	3:A:291:GLU:HB2	1.98	0.43
4:B:30:LYS:O	4:B:34:LEU:HB2	2.18	0.43
4:B:42:GLU:C	4:B:44:GLU:H	2.21	0.43
4:B:293:ILE:O	4:B:293:ILE:CG1	2.65	0.43
4:B:421:PRO:HB2	4:B:422:LEU:H	1.63	0.43
3:A:398:TRP:C	3:A:400:THR:N	2.72	0.43
3:A:435:VAL:HG13	4:B:290:THR:HG21	2.00	0.43
4:B:73:LYS:NZ	4:B:130:PHE:CZ	2.80	0.43
4:B:60:VAL:HG11	4:B:130:PHE:CD2	2.53	0.43
4:B:183:TYR:CD2	4:B:380:ILE:HD13	2.52	0.43
3:A:406:TRP:O	4:B:331:LYS:HD3	2.19	0.43
4:B:271:TYR:CD2	4:B:309:ILE:HG22	2.53	0.43
4:B:424:LYS:O	4:B:428:GLN:HB2	2.18	0.43
3:A:255:ASN:OD1	3:A:256:ASP:N	2.51	0.43
4:B:345:PRO:O	4:B:346:PHE:CB	2.67	0.43
4:B:42:GLU:OE2	4:B:49:LYS:HG3	2.19	0.43
4:B:53:GLU:O	4:B:55:PRO:HD3	2.18	0.43
3:A:280:SER:C	3:A:282:LEU:N	2.71	0.43
3:A:34:LEU:HB3	3:A:132:ILE:CD1	2.49	0.43
3:A:333:GLY:C	3:A:334:GLN:HG2	2.39	0.43
3:A:8:VAL:HA	3:A:9:PRO:HD3	1.80	0.43
3:A:300:GLU:OE1	3:A:300:GLU:HA	2.18	0.43
3:A:242:GLN:HB3	3:A:243:PRO:HD2	2.00	0.43
3:A:127:TYR:C	3:A:129:ALA:H	2.22	0.43
3:A:280:SER:O	3:A:282:LEU:N	2.52	0.43

Continued on next page...

Continued from previous page...

Atom-1	Atom-2	Interatomic distance (Å)	Clash overlap (Å)
1:T:720:DG:H2'	1:T:721:DG:H8	1.75	0.43
4:B:114:ALA:CB	4:B:214:LEU:CD2	2.96	0.43
3:A:435:VAL:O	3:A:436:GLY:C	2.56	0.43
4:B:106:VAL:HG12	4:B:107:THR:N	2.34	0.43
3:A:319:TYR:HE1	3:A:325:LEU:HD13	1.84	0.43
3:A:280:SER:O	3:A:281:LYS:C	2.57	0.43
3:A:72:ARG:HG2	3:A:74:LEU:HD21	2.01	0.43
3:A:396:GLU:C	3:A:398:TRP:N	2.72	0.43
4:B:277:ARG:HG2	4:B:277:ARG:HH11	1.83	0.43
4:B:319:TYR:CD1	4:B:383:TRP:CD1	3.07	0.43
3:A:366:LYS:HE2	3:A:401:TRP:HH2	1.83	0.43
3:A:432:GLU:CD	3:A:433:PRO:HD2	2.39	0.43
3:A:93:GLY:CA	4:B:137:ASN:OD1	2.67	0.43
4:B:86:ASP:O	4:B:87:PHE:C	2.57	0.42
3:A:454:LYS:HA	3:A:469:LEU:HG	2.00	0.42
4:B:314:VAL:HG22	4:B:315:HIS:H	1.83	0.42
3:A:279:LEU:N	3:A:302:GLU:OE2	2.51	0.42
3:A:63:ILE:HG22	3:A:64:LYS:O	2.19	0.42
3:A:416:PHE:HZ	3:A:422:LEU:HD11	1.84	0.42
1:T:714:DG:OP1	3:A:284:ARG:HB3	2.20	0.42
3:A:451:LYS:HB3	3:A:452:LEU:HD12	2.02	0.42
4:B:100:LEU:O	4:B:101:LYS:C	2.56	0.42
3:A:441:TYR:CE2	3:A:544:GLY:HA3	2.53	0.42
4:B:237:ASP:C	4:B:239:TRP:H	2.23	0.42
4:B:75:VAL:HB	4:B:77:PHE:CE2	2.54	0.42
3:A:478:GLU:HG2	3:A:499:SER:CB	2.46	0.42
2:P:809:DC:H5'	3:A:475:GLN:NE2	2.34	0.42
1:T:719:DG:C2	1:T:720:DG:C4	3.07	0.42
4:B:361:HIS:CD2	4:B:361:HIS:N	2.82	0.42
1:T:708:DG:H4'	3:A:91:GLN:O	2.19	0.42
4:B:97:PRO:C	4:B:99:GLY:N	2.72	0.42
1:T:703:DG:C2'	1:T:704:DG:O5'	2.67	0.42
3:A:77:PHE:O	3:A:81:ASN:ND2	2.52	0.42
4:B:393:ILE:CG2	4:B:398:TRP:HB2	2.50	0.42
4:B:125:ARG:C	4:B:127:TYR:H	2.23	0.42
4:B:279:LEU:CD2	4:B:295:LEU:HD22	2.50	0.42
3:A:416:PHE:CE2	3:A:418:ASN:HB2	2.54	0.42
3:A:467:VAL:HG13	3:A:468:PRO:HD2	2.02	0.42
4:B:366:LYS:O	4:B:370:GLU:HG3	2.19	0.42
4:B:210:LEU:HA	4:B:214:LEU:O	2.19	0.42
1:T:709:DC:H2'	1:T:710:DG:C8	2.55	0.42

Continued on next page...

Continued from previous page...

Atom-1	Atom-2	Interatomic distance (Å)	Clash overlap (Å)
4:B:320:ASP:OD1	4:B:322:SER:HB3	2.19	0.42
3:A:164:MET:HG3	3:A:182:GLN:NE2	2.34	0.42
4:B:264:LEU:HA	4:B:267:ALA:HB3	2.02	0.42
3:A:21:VAL:HG22	3:A:22:LYS:N	2.35	0.42
4:B:115:TYR:C	4:B:117:SER:H	2.23	0.42
3:A:28:GLU:O	3:A:32:LYS:HG3	2.20	0.42
2:P:809:DC:H5'	3:A:475:GLN:CD	2.40	0.42
3:A:391:LEU:HB2	3:A:414:TRP:CE3	2.54	0.42
3:A:235:HIS:HB2	3:A:238:LYS:O	2.20	0.42
4:B:354:TYR:HD2	4:B:371:ALA:HB2	1.85	0.42
1:T:708:DG:H5'	3:A:89:GLU:CG	2.49	0.42
3:A:64:LYS:HD3	3:A:71:TRP:CZ2	2.54	0.42
4:B:78:ARG:HD3	4:B:411:ILE:O	2.19	0.42
4:B:66:LYS:O	4:B:67:ASP:C	2.57	0.42
4:B:10:VAL:HG13	4:B:87:PHE:CD1	2.55	0.42
3:A:22:LYS:HG2	3:A:23:GLN:N	2.34	0.42
4:B:308:GLU:C	4:B:310:LEU:H	2.23	0.42
3:A:490:GLY:O	3:A:528:LYS:HD2	2.19	0.42
3:A:444:GLY:CA	3:A:552:VAL:HG11	2.45	0.41
3:A:91:GLN:HB2	3:A:161:GLN:NE2	2.34	0.41
4:B:326:ILE:CG2	4:B:327:ALA:H	2.32	0.41
3:A:446:ALA:HB2	3:A:472:THR:HG23	2.02	0.41
4:B:266:TRP:O	4:B:269:GLN:NE2	2.53	0.41
3:A:363:ASN:OD1	3:A:365:VAL:N	2.47	0.41
3:A:288:ALA:C	3:A:290:THR:N	2.73	0.41
4:B:26:LEU:HD12	4:B:31:ILE:HG12	2.02	0.41
3:A:550:LYS:O	3:A:552:VAL:N	2.54	0.41
3:A:350:LYS:HG2	3:A:351:THR:N	2.34	0.41
3:A:438:GLU:CD	3:A:459:THR:HG21	2.41	0.41
4:B:330:GLN:NE2	4:B:340:GLN:HE22	2.19	0.41
2:P:813:DT:H2'	2:P:814:DC:C6	2.55	0.41
4:B:202:ILE:O	4:B:206:ARG:HG3	2.21	0.41
3:A:393:ILE:O	3:A:393:ILE:HG23	2.19	0.41
4:B:170:PRO:HB2	4:B:208:HIS:CE1	2.56	0.41
3:A:434:ILE:CD1	3:A:530:LYS:HB3	2.36	0.41
1:T:707:DG:H2''	1:T:708:DG:H5'	2.03	0.41
3:A:458:VAL:HA	3:A:463:ARG:O	2.21	0.41
4:B:394:GLN:O	4:B:395:LYS:C	2.58	0.41
4:B:376:THR:HG1	4:B:389:PHE:HZ	1.68	0.41
3:A:411:ILE:HA	3:A:412:PRO:HD3	1.89	0.41
3:A:87:PHE:N	3:A:87:PHE:CD1	2.89	0.41

Continued on next page...

Continued from previous page...

Atom-1	Atom-2	Interatomic distance (Å)	Clash overlap (Å)
4:B:391:LEU:HA	4:B:392:PRO:HD3	1.95	0.41
3:A:452:LEU:HB3	3:A:453:GLY:H	1.66	0.41
3:A:50:ILE:CG2	3:A:145:GLN:HG2	2.50	0.41
3:A:194:GLU:O	3:A:195:ILE:C	2.59	0.41
3:A:446:ALA:CA	3:A:453:GLY:HA3	2.50	0.41
3:A:550:LYS:C	3:A:552:VAL:N	2.74	0.41
4:B:50:ILE:O	4:B:143:ARG:HB2	2.20	0.41
4:B:153:TRP:HB3	4:B:156:SER:HB2	2.01	0.41
4:B:240:THR:CG2	4:B:241:VAL:H	2.34	0.41
3:A:410:TRP:CG	3:A:411:ILE:N	2.89	0.41
4:B:195:ILE:HD11	4:B:199:ARG:NH2	2.36	0.41
4:B:365:VAL:HG23	4:B:366:LYS:N	2.35	0.41
3:A:247:PRO:CG	3:A:260:LEU:CD1	2.99	0.41
2:P:816:DG:H2'	2:P:817:MRG:C8	2.50	0.41
4:B:206:ARG:CZ	4:B:206:ARG:HB3	2.51	0.41
3:A:146:TYR:CG	3:A:150:PRO:HB3	2.56	0.41
3:A:107:THR:HB	3:A:202:ILE:HD11	2.03	0.41
3:A:492:GLU:HG2	3:A:530:LYS:HB2	2.03	0.41
3:A:94:ILE:CG2	3:A:95:PRO:CD	2.96	0.41
2:P:805:DG:C4	2:P:806:DT:C6	3.09	0.41
4:B:395:LYS:HE2	4:B:399:GLU:OE1	2.21	0.41
4:B:206:ARG:HH11	4:B:206:ARG:CB	2.33	0.41
4:B:254:VAL:O	4:B:258:GLN:HG3	2.20	0.41
3:A:417:VAL:HG22	3:A:419:THR:HG22	2.02	0.41
3:A:395:LYS:HD2	3:A:395:LYS:HA	1.89	0.41
3:A:18:GLY:HA3	3:A:56:TYR:CE1	2.55	0.41
4:B:62:ALA:C	4:B:63:ILE:HG23	2.41	0.41
3:A:68:SER:HB3	3:A:70:LYS:HB3	2.02	0.41
3:A:42:GLU:HG3	3:A:144:TYR:HE2	1.86	0.41
3:A:375:ILE:O	3:A:379:SER:HB3	2.21	0.41
4:B:422:LEU:HD12	4:B:425:LEU:CD1	2.51	0.41
3:A:491:LEU:HD22	3:A:529:GLU:HG2	2.03	0.41
3:A:286:THR:O	3:A:287:LYS:HG2	2.21	0.41
4:B:241:VAL:HA	4:B:351:THR:O	2.21	0.41
3:A:58:THR:CG2	3:A:59:PRO:HD2	2.50	0.41
4:B:118:VAL:O	4:B:118:VAL:HG12	2.19	0.41
4:B:32:LYS:O	4:B:35:VAL:HG12	2.20	0.41
3:A:486:LEU:HD13	3:A:524:GLN:HB2	2.03	0.40
4:B:365:VAL:CG1	4:B:393:ILE:HD11	2.51	0.40
4:B:164:MET:O	4:B:167:ILE:N	2.54	0.40
3:A:222:GLN:C	3:A:224:GLU:H	2.23	0.40

Continued on next page...

Continued from previous page...

Atom-1	Atom-2	Interatomic distance (Å)	Clash overlap (Å)
1:T:715:DA:C6	1:T:716:DA:C6	3.10	0.40
4:B:178:ILE:HD11	4:B:201:LYS:HZ3	1.82	0.40
4:B:234:LEU:C	4:B:235:HIS:CG	2.94	0.40
1:T:715:DA:H2''	1:T:716:DA:C5'	2.51	0.40
3:A:151:GLN:HE21	3:A:151:GLN:HB2	1.74	0.40
4:B:268:SER:O	4:B:271:TYR:O	2.39	0.40
4:B:278:GLN:HB3	4:B:299:ALA:HA	2.03	0.40
4:B:279:LEU:CD2	4:B:299:ALA:HB1	2.51	0.40
3:A:484:LEU:CA	3:A:487:GLN:HE21	2.15	0.40
3:A:482:ILE:HG23	3:A:495:ILE:HG21	2.03	0.40
3:A:489:SER:OG	3:A:493:VAL:HG21	2.22	0.40
3:A:255:ASN:C	3:A:255:ASN:OD1	2.59	0.40
1:T:705:DT:H2'	1:T:706:DC:H6	1.87	0.40
4:B:115:TYR:HB3	4:B:149:LEU:HB2	2.04	0.40
3:A:306:ASN:O	3:A:309:ILE:N	2.55	0.40
3:A:319:TYR:CE1	3:A:325:LEU:HD13	2.56	0.40
2:P:819:DG:H2'	2:P:820:DC:H6	1.86	0.40
3:A:21:VAL:HG13	3:A:59:PRO:CD	2.50	0.40
4:B:108:VAL:HG13	4:B:188:TYR:HE2	1.86	0.40
4:B:193:LEU:HB2	4:B:198:HIS:HB2	2.04	0.40
3:A:158:ALA:HB1	4:B:52:PRO:HB3	2.03	0.40
3:A:537:PRO:HG2	3:A:542:ILE:HD11	2.03	0.40

There are no symmetry-related clashes.

5.3 Torsion angles ⓘ

5.3.1 Protein backbone ⓘ

In the following table, the Percentiles column shows the percent Ramachandran outliers of the chain as a percentile score with respect to all X-ray entries followed by that with respect to entries of similar resolution.

The Analysed column shows the number of residues for which the backbone conformation was analysed, and the total number of residues.

Mol	Chain	Analysed	Favoured	Allowed	Outliers	Percentiles	
3	A	552/558 (99%)	449 (81%)	92 (17%)	11 (2%)	9	41
4	B	409/437 (94%)	310 (76%)	81 (20%)	18 (4%)	3	18
All	All	961/995 (97%)	759 (79%)	173 (18%)	29 (3%)	5	29

All (29) Ramachandran outliers are listed below:

Mol	Chain	Res	Type
4	B	98	ALA
3	A	485	ALA
3	A	541	GLY
4	B	86	ASP
4	B	112	GLY
4	B	282	LEU
3	A	307	ARG
3	A	476	LYS
4	B	113	ASP
4	B	214	LEU
4	B	260	LEU
4	B	294	PRO
4	B	316	GLY
4	B	421	PRO
4	B	85	GLN
4	B	119	PRO
4	B	126	LYS
3	A	116	PHE
3	A	551	LEU
4	B	314	VAL
4	B	379	SER
3	A	224	GLU
3	A	509	GLN
4	B	387	PRO
3	A	14	PRO
4	B	4	PRO
3	A	420	PRO
4	B	13	LYS
3	A	433	PRO

5.3.2 Protein sidechains ⓘ

In the following table, the Percentiles column shows the percent sidechain outliers of the chain as a percentile score with respect to all X-ray entries followed by that with respect to entries of similar resolution.

The Analysed column shows the number of residues for which the sidechain conformation was analysed, and the total number of residues.

Mol	Chain	Analysed	Rotameric	Outliers	Percentiles
3	A	495/498 (99%)	470 (95%)	25 (5%)	29 69

Continued on next page...

Continued from previous page...

Mol	Chain	Analysed	Rotameric	Outliers	Percentiles	
4	B	375/397 (94%)	339 (90%)	36 (10%)	10	38
All	All	870/895 (97%)	809 (93%)	61 (7%)	19	55

All (61) residues with a non-rotameric sidechain are listed below:

Mol	Chain	Res	Type
3	A	27	THR
3	A	53	GLU
3	A	79	GLU
3	A	86	ASP
3	A	89	GLU
3	A	151	GLN
3	A	156	SER
3	A	165	THR
3	A	173	LYS
3	A	188	TYR
3	A	198	HIS
3	A	211	ARG
3	A	218	ASP
3	A	224	GLU
3	A	226	PRO
3	A	240	THR
3	A	249	LYS
3	A	250	ASP
3	A	330	GLN
3	A	340	GLN
3	A	369	THR
3	A	373	GLN
3	A	403	THR
3	A	426	TRP
3	A	514	GLU
4	B	16	MET
4	B	17	ASP
4	B	24	TRP
4	B	28	GLU
4	B	29	GLU
4	B	34	LEU
4	B	40	GLU
4	B	66	LYS
4	B	69	THR
4	B	91	GLN
4	B	119	PRO

Continued on next page...

Continued from previous page...

Mol	Chain	Res	Type
4	B	137	ASN
4	B	139	THR
4	B	145	GLN
4	B	161	GLN
4	B	174	GLN
4	B	185	ASP
4	B	189	VAL
4	B	210	LEU
4	B	235	HIS
4	B	251	SER
4	B	255	ASN
4	B	269	GLN
4	B	283	LEU
4	B	290	THR
4	B	295	LEU
4	B	318	TYR
4	B	340	GLN
4	B	344	GLU
4	B	361	HIS
4	B	368	LEU
4	B	375	ILE
4	B	388	LYS
4	B	392	PRO
4	B	418	ASN
4	B	426	TRP

Some sidechains can be flipped to improve hydrogen bonding and reduce clashes. All (21) such sidechains are listed below:

Mol	Chain	Res	Type
3	A	57	ASN
3	A	91	GLN
3	A	161	GLN
3	A	221	HIS
3	A	428	GLN
3	A	447	ASN
3	A	464	GLN
3	A	471	ASN
3	A	487	GLN
3	A	494	ASN
3	A	509	GLN
4	B	85	GLN
4	B	91	GLN

Continued on next page...

Continued from previous page...

Mol	Chain	Res	Type
4	B	161	GLN
4	B	269	GLN
4	B	330	GLN
4	B	334	GLN
4	B	340	GLN
4	B	348	ASN
4	B	361	HIS
4	B	363	ASN

5.3.3 RNA ⓘ

There are no RNA molecules in this entry.

5.4 Non-standard residues in protein, DNA, RNA chains ⓘ

2 non-standard protein/DNA/RNA residues are modelled in this entry.

In the following table, the Counts columns list the number of bonds (or angles) for which Mogul statistics could be retrieved, the number of bonds (or angles) that are observed in the model and the number of bonds (or angles) that are defined in the chemical component dictionary. The Link column lists molecule types, if any, to which the group is linked. The Z score for a bond length (or angle) is the number of standard deviations the observed value is removed from the expected value. A bond length (or angle) with $|Z| > 2$ is considered an outlier worth inspection. RMSZ is the root-mean-square of all Z scores of the bond lengths (or angles).

Mol	Type	Chain	Res	Link	Bond lengths			Bond angles		
					Counts	RMSZ	# $ Z > 2$	Counts	RMSZ	# $ Z > 2$
2	MRG	P	817	1,3,2	20,28,29	1.67	2 (10%)	25,39,42	3.11	5 (20%)
2	DDG	P	822	1,2	15,23,24	1.14	1 (6%)	16,33,36	2.93	3 (18%)

In the following table, the Chirals column lists the number of chiral outliers, the number of chiral centers analysed, the number of these observed in the model and the number defined in the chemical component dictionary. Similar counts are reported in the Torsion and Rings columns. '-' means no outliers of that kind were identified.

Mol	Type	Chain	Res	Link	Chirals	Torsions	Rings
2	MRG	P	817	1,3,2	-	0/8/26/27	0/3/3/3
2	DDG	P	822	1,2	-	0/3/18/19	0/3/3/3

All (3) bond length outliers are listed below:

Mol	Chain	Res	Type	Atoms	Z	Observed(Å)	Ideal(Å)
2	P	817	MRG	C21-N2	-6.37	1.31	1.46
2	P	817	MRG	C6-N1	2.75	1.38	1.33
2	P	822	DDG	C6-N1	3.35	1.39	1.33

All (8) bond angle outliers are listed below:

Mol	Chain	Res	Type	Atoms	Z	Observed(°)	Ideal(°)
2	P	817	MRG	C21-N2-C2	-9.53	105.78	123.80
2	P	822	DDG	C5-C6-N1	-8.83	111.52	123.59
2	P	817	MRG	C5-C6-N1	-8.66	111.75	123.59
2	P	817	MRG	C2-N3-C4	-2.81	111.70	115.09
2	P	822	DDG	N3-C2-N1	-2.40	123.78	127.44
2	P	817	MRG	N2-C2-N3	2.32	121.56	117.22
2	P	822	DDG	C6-N1-C2	6.67	125.20	115.94
2	P	817	MRG	C6-N1-C2	6.88	125.31	115.31

There are no chirality outliers.

There are no torsion outliers.

There are no ring outliers.

2 monomers are involved in 7 short contacts:

Mol	Chain	Res	Type	Clashes	Symm-Clashes
2	P	817	MRG	5	0
2	P	822	DDG	2	0

5.5 Carbohydrates [i](#)

There are no carbohydrates in this entry.

5.6 Ligand geometry [i](#)

Of 5 ligands modelled in this entry, 2 are monoatomic - leaving 3 for Mogul analysis.

In the following table, the Counts columns list the number of bonds (or angles) for which Mogul statistics could be retrieved, the number of bonds (or angles) that are observed in the model and the number of bonds (or angles) that are defined in the chemical component dictionary. The Link column lists molecule types, if any, to which the group is linked. The Z score for a bond length (or angle) is the number of standard deviations the observed value is removed from the expected value. A bond length (or angle) with $|Z| > 2$ is considered an outlier worth inspection. RMSZ is the root-mean-square of all Z scores of the bond lengths (or angles).

Mol	Type	Chain	Res	Link	Bond lengths			Bond angles		
					Counts	RMSZ	# Z > 2	Counts	RMSZ	# Z > 2
7	SO4	A	559	-	4,4,4	0.91	0	6,6,6	0.16	0
7	SO4	A	560	-	4,4,4	0.86	0	6,6,6	0.39	0
5	TNV	A	823	6	21,28,28	1.44	4 (19%)	21,43,43	1.32	3 (14%)

In the following table, the Chirals column lists the number of chiral outliers, the number of chiral centers analysed, the number of these observed in the model and the number defined in the chemical component dictionary. Similar counts are reported in the Torsion and Rings columns. '-' means no outliers of that kind were identified.

Mol	Type	Chain	Res	Link	Chirals	Torsions	Rings
7	SO4	A	559	-	-	0/0/0/0	0/0/0/0
7	SO4	A	560	-	-	0/0/0/0	0/0/0/0
5	TNV	A	823	6	-	0/17/22/22	0/2/2/2

All (4) bond length outliers are listed below:

Mol	Chain	Res	Type	Atoms	Z	Observed(Å)	Ideal(Å)
5	A	823	TNV	PA-O3A	-3.34	1.54	1.58
5	A	823	TNV	C6'-N9	-2.51	1.45	1.48
5	A	823	TNV	PA-C9'	-2.32	1.76	1.79
5	A	823	TNV	C2-N3	2.70	1.37	1.32

All (3) bond angle outliers are listed below:

Mol	Chain	Res	Type	Atoms	Z	Observed(°)	Ideal(°)
5	A	823	TNV	PB-O3B-PG	-2.41	124.57	132.67
5	A	823	TNV	N3-C2-N1	-2.12	127.27	128.89
5	A	823	TNV	O3A-PA-C9'	2.76	113.76	104.16

There are no chirality outliers.

There are no torsion outliers.

There are no ring outliers.

1 monomer is involved in 1 short contact:

Mol	Chain	Res	Type	Clashes	Symm-Clashes
5	A	823	TNV	1	0

5.7 Other polymers ⓘ

There are no such residues in this entry.

5.8 Polymer linkage issues ⓘ

There are no chain breaks in this entry.

6 Fit of model and data ⓘ

6.1 Protein, DNA and RNA chains ⓘ

In the following table, the column labelled ‘#RSRZ> 2’ contains the number (and percentage) of RSRZ outliers, followed by percent RSRZ outliers for the chain as percentile scores relative to all X-ray entries and entries of similar resolution. The OWAB column contains the minimum, median, 95th percentile and maximum values of the occupancy-weighted average B-factor per residue. The column labelled ‘Q< 0.9’ lists the number of (and percentage) of residues with an average occupancy less than 0.9.

Mol	Chain	Analysed	<RSRZ>	#RSRZ>2			OWAB(Å ²)	Q<0.9
1	T	24/27 (88%)	-0.10	1 (4%)	40	16	40, 111, 138, 143	0
2	P	18/21 (85%)	0.03	1 (5%)	28	11	46, 105, 145, 150	0
3	A	554/558 (99%)	-0.14	11 (1%)	68	39	24, 70, 131, 149	0
4	B	413/437 (94%)	0.20	28 (6%)	20	7	41, 105, 147, 150	0
All	All	1009/1043 (96%)	0.00	41 (4%)	41	16	24, 85, 141, 150	0

All (41) RSRZ outliers are listed below:

Mol	Chain	Res	Type	RSRZ
4	B	94	ILE	4.2
4	B	295	LEU	4.1
4	B	3	SER	4.1
4	B	358	ARG	3.9
3	A	448	ARG	3.7
4	B	90	VAL	3.6
4	B	195	ILE	3.4
4	B	303	LEU	3.3
4	B	361	HIS	3.3
4	B	240	THR	3.2
4	B	359	GLY	3.0
4	B	189	VAL	2.9
3	A	22	LYS	2.8
4	B	289	LEU	2.7
4	B	85	GLN	2.7
3	A	464	GLN	2.7
4	B	190	GLY	2.7
4	B	5	ILE	2.7
4	B	239	TRP	2.6
4	B	214	LEU	2.6
4	B	360	ALA	2.6

Continued on next page...

Continued from previous page...

Mol	Chain	Res	Type	RSRZ
1	T	725	DG	2.5
4	B	4	PRO	2.4
3	A	438	GLU	2.4
4	B	279	LEU	2.4
4	B	95	PRO	2.4
4	B	294	PRO	2.3
4	B	232	TYR	2.2
3	A	493	VAL	2.2
3	A	457	TYR	2.2
4	B	88	TRP	2.2
4	B	286	THR	2.2
3	A	440	PHE	2.1
4	B	242	GLN	2.1
3	A	551	LEU	2.1
4	B	67	ASP	2.1
3	A	491	LEU	2.1
3	A	463	ARG	2.1
3	A	449	GLU	2.1
4	B	293	ILE	2.0
2	P	805	DG	2.0

6.2 Non-standard residues in protein, DNA, RNA chains [i](#)

In the following table, the Atoms column lists the number of modelled atoms in the group and the number defined in the chemical component dictionary. LLDF column lists the quality of electron density of the group with respect to its neighbouring residues in protein, DNA or RNA chains. The B-factors column lists the minimum, median, 95th percentile and maximum values of B factors of atoms in the group. The column labelled 'Q< 0.9' lists the number of atoms with occupancy less than 0.9.

Mol	Type	Chain	Res	Atoms	RSCC	RSR	LLDF	B-factors(\AA^2)	Q<0.9
2	MRG	P	817	26/27	0.91	0.20	-	57,68,85,93	0
2	DDG	P	822	21/22	0.98	0.18	-	38,50,62,72	0

6.3 Carbohydrates [i](#)

There are no carbohydrates in this entry.

6.4 Ligands [i](#)

In the following table, the Atoms column lists the number of modelled atoms in the group and the number defined in the chemical component dictionary. LLDF column lists the quality of electron density of the group with respect to its neighbouring residues in protein, DNA or RNA chains. The B-factors column lists the minimum, median, 95th percentile and maximum values of B factors of atoms in the group. The column labelled 'Q< 0.9' lists the number of atoms with occupancy less than 0.9.

Mol	Type	Chain	Res	Atoms	RSCC	RSR	LLDF	B-factors(Å ²)	Q<0.9
7	SO4	A	560	5/5	0.90	0.41	6.70	113,115,119,119	0
6	MG	A	600	1/1	0.98	0.23	1.59	33,33,33,33	0
5	TNV	A	823	27/27	0.97	0.21	0.40	40,58,66,75	0
6	MG	A	601	1/1	0.95	0.06	-1.40	75,75,75,75	0
7	SO4	A	559	5/5	0.85	0.22	-	131,132,136,137	0

6.5 Other polymers [i](#)

There are no such residues in this entry.