



# Full wwPDB X-ray Structure Validation Report ⓘ

Feb 1, 2016 – 09:54 AM GMT

PDB ID : 3K3L  
Title : Crystal structure of Siderocalin (NGAL, Lipocalin 2) complexed with apo Enterobactin  
Authors : Clifton, M.C.  
Deposited on : 2009-10-02  
Resolution : 2.62 Å(reported)

This is a Full wwPDB X-ray Structure Validation Report for a publicly released PDB entry.  
We welcome your comments at [validation@mail.wwpdb.org](mailto:validation@mail.wwpdb.org)  
A user guide is available at  
<http://wwpdb.org/validation/2016/XrayValidationReportHelp>  
with specific help available everywhere you see the ⓘ symbol.

---

The following versions of software and data (see [references ⓘ](#)) were used in the production of this report:

MolProbity : 4.02b-467  
Mogul : 1.7 (RC4), CSD as536be (2015)  
Xtriage (Phenix) : 1.9-1692  
EDS : rb-20026688  
Percentile statistics : 20151230.v01 (using entries in the PDB archive December 30th 2015)  
Refmac : 5.8.0135  
CCP4 : 6.5.0  
Ideal geometry (proteins) : Engh & Huber (2001)  
Ideal geometry (DNA, RNA) : Parkinson et al. (1996)  
Validation Pipeline (wwPDB-VP) : trunk26865

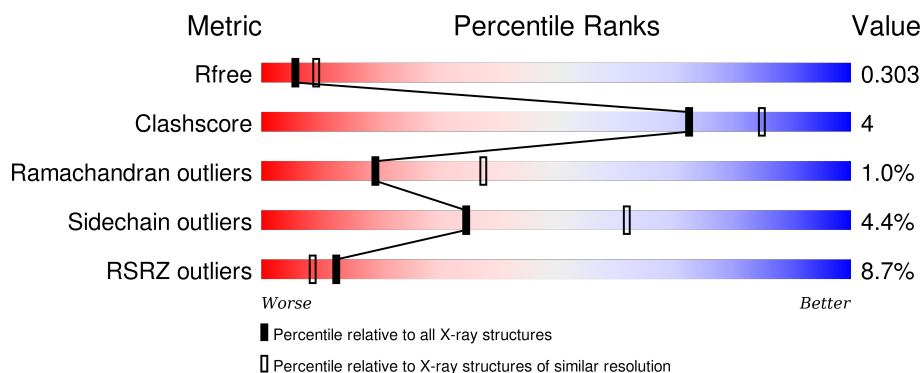
# 1 Overall quality at a glance ⓘ

The following experimental techniques were used to determine the structure:

## *X-RAY DIFFRACTION*

The reported resolution of this entry is 2.62 Å.

Percentile scores (ranging between 0-100) for global validation metrics of the entry are shown in the following graphic. The table shows the number of entries on which the scores are based.



Metric	Whole archive (#Entries)	Similar resolution (#Entries, resolution range(Å))
$R_{free}$	91344	2700 (2.64-2.60)
Clashscore	102246	3065 (2.64-2.60)
Ramachandran outliers	100387	3015 (2.64-2.60)
Sidechain outliers	100360	3015 (2.64-2.60)
RSRZ outliers	91569	2706 (2.64-2.60)

The table below summarises the geometric issues observed across the polymeric chains and their fit to the electron density. The red, orange, yellow and green segments on the lower bar indicate the fraction of residues that contain outliers for  $\geq 3$ , 2, 1 and 0 types of geometric quality criteria. A grey segment represents the fraction of residues that are not modelled. The numeric value for each fraction is indicated below the corresponding segment, with a dot representing fractions  $\leq 5\%$ . The upper red bar (where present) indicates the fraction of residues that have poor fit to the electron density. The numeric value is given above the bar.

Mol	Chain	Length	Quality of chain
1	A	178	<div> <div></div> <div>89%</div> <div>8%</div> <div>••</div> </div>
1	B	178	<div> <div>22%</div> <div>78%</div> <div>8%</div> <div>•</div> <div>13%</div> </div>
1	C	178	<div> <div>2%</div> <div>86%</div> <div>11%</div> <div>••</div> </div>

The following table lists non-polymeric compounds, carbohydrate monomers and non-standard residues in protein, DNA, RNA chains that are outliers for geometric or electron-density-fit criteria:

Mol	Type	Chain	Res	Chirality	Geometry	Clashes	Electron density
2	DBS	A	301	-	-	-	X
3	DBH	A	179	-	-	-	X
4	GOL	A	180	-	-	-	X
4	GOL	C	3731	-	-	-	X
5	NA	A	181	-	-	-	X
5	NA	C	184	-	-	-	X
7	MCK	C	179	-	-	-	X

## 2 Entry composition [i](#)

There are 9 unique types of molecules in this entry. The entry contains 3940 atoms, of which 0 are hydrogens and 0 are deuteriums.

In the tables below, the ZeroOcc column contains the number of atoms modelled with zero occupancy, the AltConf column contains the number of residues with at least one atom in alternate conformation and the Trace column contains the number of residues modelled with at most 2 atoms.

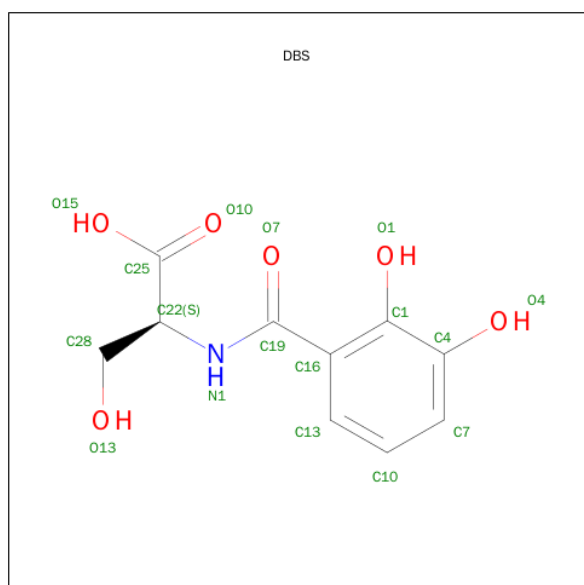
- Molecule 1 is a protein called Neutrophil gelatinase-associated lipocalin.

Mol	Chain	Residues	Atoms					ZeroOcc	AltConf	Trace
1	A	175	Total	C	N	O	S	0	1	0
			1384	904	226	250	4			
1	B	154	Total	C	N	O	S	0	0	0
			903	566	159	175	3			
1	C	175	Total	C	N	O	S	0	2	0
			1409	914	234	257	4			

There are 3 discrepancies between the modelled and reference sequences:

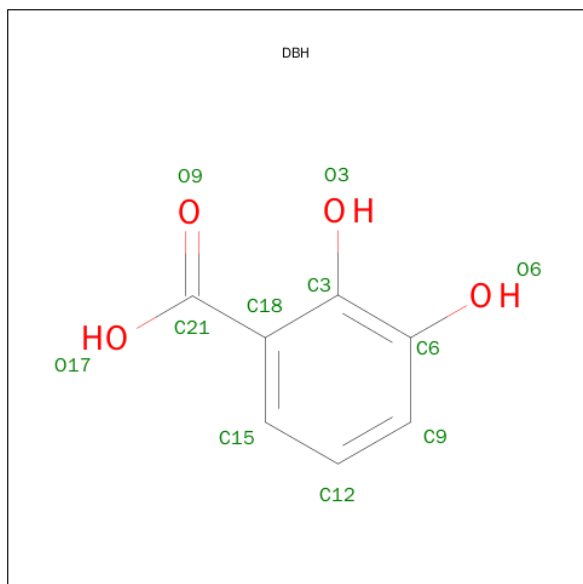
Chain	Residue	Modelled	Actual	Comment	Reference
A	87	SER	CYS	ENGINEERED	UNP P80188
B	87	SER	CYS	ENGINEERED	UNP P80188
C	87	SER	CYS	ENGINEERED	UNP P80188

- Molecule 2 is 2-(2,3-DIHYDROXY-BENZOYLAMINO)-3-HYDROXY-PROPIONIC ACID (three-letter code: DBS) (formula: C<sub>10</sub>H<sub>11</sub>NO<sub>6</sub>).



Mol	Chain	Residues	Atoms				ZeroOcc	AltConf
2	A	1	Total	C	N	O	0	0
			17	10	1	6		

- Molecule 3 is 2,3-DIHYDROXY-BENZOIC ACID (three-letter code: DBH) (formula:  $C_7H_6O_4$ ).



Mol	Chain	Residues	Atoms			ZeroOcc	AltConf
3	A	1	Total	C	O	0	0
			11	7	4		
3	A	1	Total	C	O	0	0
			11	7	4		

- Molecule 4 is GLYCEROL (three-letter code: GOL) (formula:  $C_3H_8O_3$ ).



Mol	Chain	Residues	Atoms			ZeroOcc	AltConf
4	A	1	Total	C	O	0	0
			6	3	3		
4	A	1	Total	C	O	0	0
			6	3	3		
4	C	1	Total	C	O	0	0
			6	3	3		
4	C	1	Total	C	O	0	0
			6	3	3		
4	C	1	Total	C	O	0	0
			6	3	3		
4	C	1	Total	C	O	0	0
			6	3	3		

- Molecule 5 is SODIUM ION (three-letter code: NA) (formula: Na).

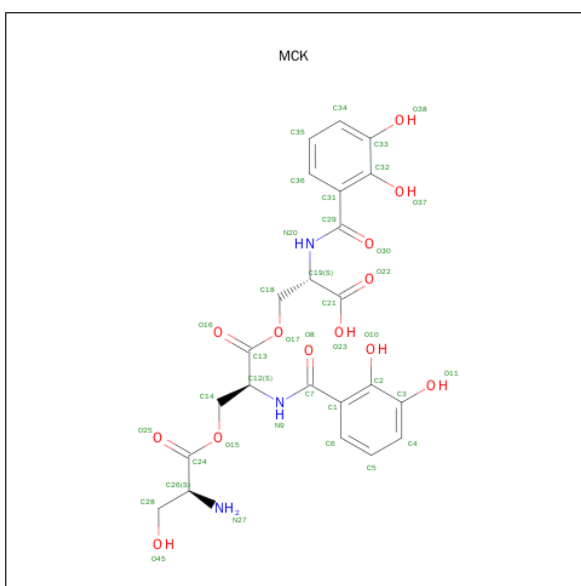
Mol	Chain	Residues	Atoms		ZeroOcc	AltConf
5	A	1	Total	Na	0	0
			1	1		
5	C	1	Total	Na	0	0
			1	1		

- Molecule 6 is SULFATE ION (three-letter code: SO4) (formula: O<sub>4</sub>S).



Mol	Chain	Residues	Atoms			ZeroOcc	AltConf
6	A	1	Total	O	S	0	0
			5	4	1		

- Molecule 7 is N-[(2,3-DIHYDROXYPHENYL)CARBONYL]-O-[(2S)-2-[(2,3-DIHYDROXYPHENYL)CARBONYL]AMINO}-3-(L-SERYLOXY)PROPANOYL]-L-SERINE (three-letter code: MCK) (formula: C<sub>23</sub>H<sub>25</sub>N<sub>3</sub>O<sub>13</sub>).



Mol	Chain	Residues	Atoms				ZeroOcc	AltConf
7	C	1	Total	C	N	O	0	0
			39	23	3	13		

- Molecule 8 is CHLORIDE ION (three-letter code: CL) (formula: Cl).

Mol	Chain	Residues	Atoms	ZeroOcc	AltConf
8	C	1	Total Cl 1 1	0	0

- Molecule 9 is water.

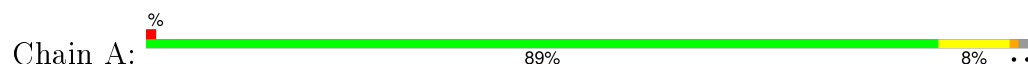
Mol	Chain	Residues	Atoms	ZeroOcc	AltConf
9	A	41	Total O 41 41	0	0
9	B	14	Total O 14 14	0	0
9	C	61	Total O 61 61	0	0



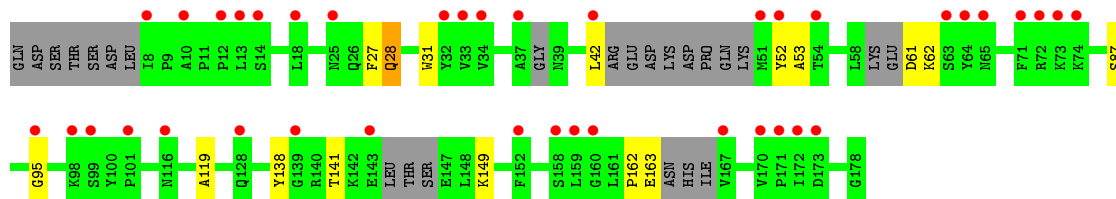
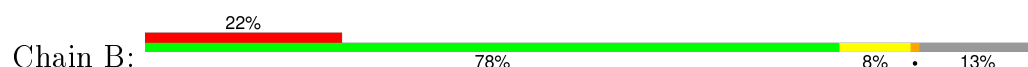
### 3 Residue-property plots [i](#)

These plots are drawn for all protein, RNA and DNA chains in the entry. The first graphic for a chain summarises the proportions of errors displayed in the second graphic. The second graphic shows the sequence view annotated by issues in geometry and electron density. Residues are color-coded according to the number of geometric quality criteria for which they contain at least one outlier: green = 0, yellow = 1, orange = 2 and red = 3 or more. A red dot above a residue indicates a poor fit to the electron density ( $RSRZ > 2$ ). Stretches of 2 or more consecutive residues without any outlier are shown as a green connector. Residues present in the sample, but not in the model, are shown in grey.

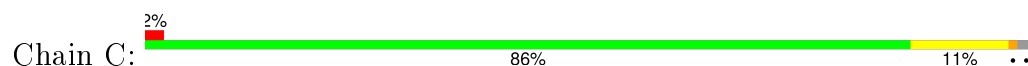
- Molecule 1: Neutrophil gelatinase-associated lipocalin



- Molecule 1: Neutrophil gelatinase-associated lipocalin



- Molecule 1: Neutrophil gelatinase-associated lipocalin



## 4 Data and refinement statistics

Property	Value	Source
Space group	P 41 21 2	Depositor
Cell constants a, b, c, $\alpha$ , $\beta$ , $\gamma$	114.20Å 114.20Å 119.30Å 90.00° 90.00° 90.00°	Depositor
Resolution (Å)	41.25 – 2.62 41.25 – 2.62	Depositor EDS
% Data completeness (in resolution range)	99.9 (41.25-2.62) 98.6 (41.25-2.62)	Depositor EDS
$R_{merge}$	0.06	Depositor
$R_{sym}$	(Not available)	Depositor
$\langle I/\sigma(I) \rangle$ <sup>1</sup>	5.99 (at 2.61Å)	Xtriage
Refinement program	REFMAC 5.5.0072	Depositor
R, $R_{free}$	0.260 , 0.307 0.261 , 0.303	Depositor DCC
$R_{free}$ test set	2245 reflections (10.36%)	DCC
Wilson B-factor (Å <sup>2</sup> )	45.4	Xtriage
Anisotropy	0.094	Xtriage
Bulk solvent $k_{sol}$ (e/Å <sup>3</sup> ), $B_{sol}$ (Å <sup>2</sup> )	0.33 , 50.2	EDS
Estimated twinning fraction	0.014 for -h,l,k 0.009 for -l,-k,-h	Xtriage
L-test for twinning <sup>2</sup>	$\langle  L  \rangle = 0.50$ , $\langle L^2 \rangle = 0.33$	Xtriage
Outliers	0 of 23909 reflections	Xtriage
$F_o, F_c$ correlation	0.89	EDS
Total number of atoms	3940	wwPDB-VP
Average B, all atoms (Å <sup>2</sup> )	47.0	wwPDB-VP

Xtriage's analysis on translational NCS is as follows: *The largest off-origin peak in the Patterson function is 4.02% of the height of the origin peak. No significant pseudotranslation is detected.*

<sup>1</sup>Intensities estimated from amplitudes.

<sup>2</sup>Theoretical values of  $\langle |L| \rangle$ ,  $\langle L^2 \rangle$  for acentric reflections are 0.5, 0.375 respectively for untwinned datasets, and 0.333, 0.2 for perfectly twinned datasets.

## 5 Model quality [i](#)

### 5.1 Standard geometry [i](#)

Bond lengths and bond angles in the following residue types are not validated in this section: GOL, MCK, CL, NA, SO4, DBH, DBS

The Z score for a bond length (or angle) is the number of standard deviations the observed value is removed from the expected value. A bond length (or angle) with  $|Z| > 5$  is considered an outlier worth inspection. RMSZ is the root-mean-square of all Z scores of the bond lengths (or angles).

Mol	Chain	Bond lengths		Bond angles	
		RMSZ	$\# Z  > 5$	RMSZ	$\# Z  > 5$
1	A	0.31	0/1424	0.48	0/1934
1	B	0.28	0/915	0.45	0/1257
1	C	0.31	0/1452	0.49	0/1972
All	All	0.30	0/3791	0.48	0/5163

There are no bond length outliers.

There are no bond angle outliers.

There are no chirality outliers.

There are no planarity outliers.

### 5.2 Too-close contacts [i](#)

In the following table, the Non-H and H(model) columns list the number of non-hydrogen atoms and hydrogen atoms in the chain respectively. The H(added) column lists the number of hydrogen atoms added and optimized by MolProbity. The Clashes column lists the number of clashes within the asymmetric unit, whereas Symm-Clashes lists symmetry related clashes.

Mol	Chain	Non-H	H(model)	H(added)	Clashes	Symm-Clashes
1	A	1384	0	1347	12	0
1	B	903	0	572	7	0
1	C	1409	0	1381	12	0
2	A	17	0	8	0	0
3	A	22	0	6	0	0
4	A	12	0	16	0	0
4	C	30	0	40	1	0
5	A	1	0	0	0	0
5	C	1	0	0	0	0
6	A	5	0	0	0	0

*Continued on next page...*

*Continued from previous page...*

Mol	Chain	Non-H	H(model)	H(added)	Clashes	Symm-Clashes
7	C	39	0	21	0	0
8	C	1	0	0	0	0
9	A	41	0	0	0	0
9	B	14	0	0	0	0
9	C	61	0	0	0	0
All	All	3940	0	3391	30	0

The all-atom clashscore is defined as the number of clashes found per 1000 atoms (including hydrogen atoms). The all-atom clashscore for this structure is 4.

All (30) close contacts within the same asymmetric unit are listed below, sorted by their clash magnitude.

Atom-1	Atom-2	Interatomic distance (Å)	Clash overlap (Å)
1:A:34:VAL:HG23	1:A:137:LEU:HD13	1.65	0.78
1:A:34:VAL:HG21	1:A:144:LEU:HD12	1.72	0.72
1:B:162:PRO:HB2	1:B:163:GLU:HG2	1.73	0.71
1:C:34:VAL:HG21	1:C:144:LEU:HD12	1.72	0.71
1:A:33:VAL:HG21	1:A:52:TYR:CE2	2.29	0.68
1:B:27:PHE:HA	1:B:28:GLN:CB	2.23	0.68
1:C:36:LEU:HD13	1:C:41:ILE:HD12	1.77	0.66
1:C:66:VAL:HG21	1:C:83:PHE:CD1	2.32	0.64
1:A:34:VAL:CG2	1:A:137:LEU:HD13	2.29	0.61
1:B:119:ALA:HB3	1:B:138:TYR:CB	2.33	0.58
1:C:70:LEU:N	1:C:70:LEU:HD12	2.24	0.53
1:C:114:ASN:HD21	1:C:117:GLN:HB2	1.74	0.53
1:B:27:PHE:CA	1:B:28:GLN:CB	2.88	0.51
1:B:61:ASP:O	1:B:62:LYS:CB	2.59	0.51
1:A:119:ALA:HB3	1:A:138:TYR:HB2	1.93	0.51
1:A:140:ARG:HG2	1:C:23:GLN:NE2	2.26	0.50
1:A:34:VAL:HG21	1:A:144:LEU:CD1	2.43	0.48
1:C:69:VAL:HG22	1:C:78:TYR:CD1	2.48	0.48
1:B:162:PRO:CB	1:B:163:GLU:HG2	2.43	0.47
1:A:31:TRP:CE3	1:A:138:TYR:HB3	2.49	0.47
1:B:31:TRP:O	1:B:53:ALA:HB1	2.14	0.47
1:C:31:TRP:CE3	1:C:138:TYR:HB3	2.50	0.46
1:C:34:VAL:CG2	1:C:144:LEU:HD12	2.43	0.46
1:C:33:VAL:HG21	1:C:52:TYR:CZ	2.51	0.46
1:A:66:VAL:HG21	1:A:83:PHE:CD1	2.52	0.45
1:A:31:TRP:CZ3	1:A:140:ARG:HD2	2.52	0.44
1:A:33:VAL:HG21	1:A:52:TYR:CZ	2.52	0.43
1:A:114:ASN:HD21	1:A:117:GLN:HB2	1.83	0.43

*Continued on next page...*

*Continued from previous page...*

Atom-1	Atom-2	Interatomic distance (Å)	Clash overlap (Å)
1:C:33:VAL:HG21	1:C:52:TYR:CE2	2.56	0.41
1:C:97:ILE:HD12	4:C:3731:GOL:H11	2.03	0.41

There are no symmetry-related clashes.

## 5.3 Torsion angles [i](#)

### 5.3.1 Protein backbone [i](#)

In the following table, the Percentiles column shows the percent Ramachandran outliers of the chain as a percentile score with respect to all X-ray entries followed by that with respect to entries of similar resolution.

The Analysed column shows the number of residues for which the backbone conformation was analysed, and the total number of residues.

Mol	Chain	Analysed	Favoured	Allowed	Outliers	Percentiles	
1	A	174/178 (98%)	167 (96%)	7 (4%)	0	100	100
1	B	142/178 (80%)	121 (85%)	16 (11%)	5 (4%)	4	6
1	C	175/178 (98%)	172 (98%)	3 (2%)	0	100	100
All	All	491/534 (92%)	460 (94%)	26 (5%)	5 (1%)	19	37

All (5) Ramachandran outliers are listed below:

Mol	Chain	Res	Type
1	B	28	GLN
1	B	149	LYS
1	B	141	THR
1	B	52	TYR
1	B	95	GLY

### 5.3.2 Protein sidechains [i](#)

In the following table, the Percentiles column shows the percent sidechain outliers of the chain as a percentile score with respect to all X-ray entries followed by that with respect to entries of similar resolution.

The Analysed column shows the number of residues for which the sidechain conformation was analysed, and the total number of residues.

Mol	Chain	Analysed	Rotameric	Outliers	Percentiles	
1	A	147/163 (90%)	141 (96%)	6 (4%)	37	65
1	B	40/163 (24%)	38 (95%)	2 (5%)	30	55
1	C	154/163 (94%)	147 (96%)	7 (4%)	34	61
All	All	341/489 (70%)	326 (96%)	15 (4%)	35	62

All (15) residues with a non-rotameric sidechain are listed below:

Mol	Chain	Res	Type
1	A	47	ASP
1	A	81	ARG
1	A	109	ARG
1	A	137	LEU
1	A	140	ARG
1	A	154	ARG
1	B	42	LEU
1	B	87	SER
1	C	25	ASN
1	C	36	LEU
1	C	58	LEU
1	C	70	LEU
1	C	81	ARG
1	C	137	LEU
1	C	140	ARG

Some sidechains can be flipped to improve hydrogen bonding and reduce clashes. There are no such sidechains identified.

### 5.3.3 RNA ⓘ

There are no RNA molecules in this entry.

## 5.4 Non-standard residues in protein, DNA, RNA chains ⓘ

There are no non-standard protein/DNA/RNA residues in this entry.

## 5.5 Carbohydrates ⓘ

There are no carbohydrates in this entry.

## 5.6 Ligand geometry

Of 15 ligands modelled in this entry, 3 are monoatomic - leaving 12 for Mogul analysis.

In the following table, the Counts columns list the number of bonds (or angles) for which Mogul statistics could be retrieved, the number of bonds (or angles) that are observed in the model and the number of bonds (or angles) that are defined in the chemical component dictionary. The Link column lists molecule types, if any, to which the group is linked. The Z score for a bond length (or angle) is the number of standard deviations the observed value is removed from the expected value. A bond length (or angle) with  $|Z| > 2$  is considered an outlier worth inspection. RMSZ is the root-mean-square of all Z scores of the bond lengths (or angles).

Mol	Type	Chain	Res	Link	Bond lengths			Bond angles		
					Counts	RMSZ	# Z  > 2	Counts	RMSZ	# Z  > 2
3	DBH	A	179	-	8,11,11	0.37	0	11,15,15	0.68	0
4	GOL	A	180	-	5,5,5	0.41	0	5,5,5	0.25	0
6	SO4	A	182	-	4,4,4	0.21	0	6,6,6	0.07	0
2	DBS	A	301	-	14,17,17	0.44	0	18,23,23	0.50	0
3	DBH	A	303	-	8,11,11	0.34	0	11,15,15	0.68	0
4	GOL	A	3731	-	5,5,5	0.35	0	5,5,5	0.23	0
7	MCK	C	179	-	35,40,40	1.54	2 (5%)	47,55,55	1.19	6 (12%)
4	GOL	C	180	-	5,5,5	0.38	0	5,5,5	0.16	0
4	GOL	C	181	-	5,5,5	0.33	0	5,5,5	0.19	0
4	GOL	C	182	-	5,5,5	0.34	0	5,5,5	0.18	0
4	GOL	C	183	-	5,5,5	0.35	0	5,5,5	0.32	0
4	GOL	C	3731	-	5,5,5	0.35	0	5,5,5	0.21	0

In the following table, the Chirals column lists the number of chiral outliers, the number of chiral centers analysed, the number of these observed in the model and the number defined in the chemical component dictionary. Similar counts are reported in the Torsion and Rings columns. '-' means no outliers of that kind were identified.

Mol	Type	Chain	Res	Link	Chirals	Torsions	Rings
3	DBH	A	179	-	-	0/0/4/4	0/1/1/1
4	GOL	A	180	-	-	0/4/4/4	0/0/0/0
6	SO4	A	182	-	-	0/0/0/0	0/0/0/0
2	DBS	A	301	-	-	0/10/14/14	0/1/1/1
3	DBH	A	303	-	-	0/0/4/4	0/1/1/1
4	GOL	A	3731	-	-	0/4/4/4	0/0/0/0
7	MCK	C	179	-	-	0/36/40/40	0/2/2/2
4	GOL	C	180	-	-	0/4/4/4	0/0/0/0
4	GOL	C	181	-	-	0/4/4/4	0/0/0/0
4	GOL	C	182	-	-	0/4/4/4	0/0/0/0
4	GOL	C	183	-	-	0/4/4/4	0/0/0/0
4	GOL	C	3731	-	-	0/4/4/4	0/0/0/0

All (2) bond length outliers are listed below:

Mol	Chain	Res	Type	Atoms	Z	Observed(Å)	Ideal(Å)
7	C	179	MCK	O15-C24	5.97	1.46	1.33
7	C	179	MCK	O17-C13	6.30	1.46	1.33

All (6) bond angle outliers are listed below:

Mol	Chain	Res	Type	Atoms	Z	Observed(°)	Ideal(°)
7	C	179	MCK	O15-C24-O25	-3.01	117.91	124.05
7	C	179	MCK	O17-C13-O16	-2.18	119.61	124.05
7	C	179	MCK	C14-O15-C24	2.05	121.34	116.94
7	C	179	MCK	C18-O17-C13	2.74	122.83	116.94
7	C	179	MCK	O17-C13-C12	3.35	120.11	111.71
7	C	179	MCK	O15-C24-C26	4.00	121.69	111.72

There are no chirality outliers.

There are no torsion outliers.

There are no ring outliers.

1 monomer is involved in 1 short contact:

Mol	Chain	Res	Type	Clashes	Symm-Clashes
4	C	3731	GOL	1	0

## 5.7 Other polymers [i](#)

There are no such residues in this entry.

## 5.8 Polymer linkage issues [i](#)

There are no chain breaks in this entry.



## 6 Fit of model and data ⓘ

### 6.1 Protein, DNA and RNA chains ⓘ

In the following table, the column labelled ‘#RSRZ> 2’ contains the number (and percentage) of RSRZ outliers, followed by percent RSRZ outliers for the chain as percentile scores relative to all X-ray entries and entries of similar resolution. The OWAB column contains the minimum, median, 95<sup>th</sup> percentile and maximum values of the occupancy-weighted average B-factor per residue. The column labelled ‘Q< 0.9’ lists the number of (and percentage) of residues with an average occupancy less than 0.9.

Mol	Chain	Analysed	<RSRZ>	#RSRZ>2	OWAB(Å <sup>2</sup> )	Q<0.9
1	A	175/178 (98%)	-0.04	2 (1%) 82 79	26, 39, 46, 53	1 (0%)
1	B	154/178 (86%)	1.30	39 (25%) 1 0	54, 85, 91, 91	0
1	C	175/178 (98%)	-0.11	3 (1%) 73 68	21, 29, 43, 52	0
All	All	504/534 (94%)	0.35	44 (8%) 13 9	21, 39, 89, 91	1 (0%)

All (44) RSRZ outliers are listed below:

Mol	Chain	Res	Type	RSRZ
1	B	159	LEU	7.0
1	B	170	VAL	5.5
1	B	37	ALA	5.2
1	B	160	GLY	4.6
1	B	71	PHE	4.4
1	B	172	ILE	4.2
1	B	13	LEU	4.2
1	B	14	SER	4.0
1	B	64	TYR	4.0
1	B	167	VAL	3.9
1	B	74	LYS	3.9
1	B	171	PRO	3.8
1	B	101	PRO	3.6
1	B	33	VAL	3.5
1	B	32	TYR	3.2
1	B	10	ALA	3.2
1	B	73	LYS	3.1
1	C	3	SER	2.9
1	B	34	VAL	2.8
1	B	95	GLY	2.8
1	B	42	LEU	2.7
1	B	25	ASN	2.7
1	B	8	ILE	2.7

*Continued on next page...*

*Continued from previous page...*

Mol	Chain	Res	Type	RSRZ
1	C	46	LYS	2.7
1	B	143	GLU	2.6
1	B	12	PRO	2.6
1	B	98	LYS	2.6
1	B	139	GLY	2.5
1	B	51	MET	2.5
1	B	52	TYR	2.4
1	A	4	THR	2.3
1	C	4	THR	2.3
1	B	72	ARG	2.3
1	B	99	SER	2.3
1	B	128	GLN	2.3
1	B	152	PHE	2.2
1	B	173	ASP	2.2
1	A	146	SER	2.2
1	B	158	SER	2.2
1	B	65	ASN	2.1
1	B	116	ASN	2.1
1	B	63	SER	2.1
1	B	54	THR	2.1
1	B	18	LEU	2.0

## 6.2 Non-standard residues in protein, DNA, RNA chains [i](#)

There are no non-standard protein/DNA/RNA residues in this entry.

## 6.3 Carbohydrates [i](#)

There are no carbohydrates in this entry.

## 6.4 Ligands [i](#)

In the following table, the Atoms column lists the number of modelled atoms in the group and the number defined in the chemical component dictionary. LLDF column lists the quality of electron density of the group with respect to its neighbouring residues in protein, DNA or RNA chains. The B-factors column lists the minimum, median, 95<sup>th</sup> percentile and maximum values of B factors of atoms in the group. The column labelled 'Q< 0.9' lists the number of atoms with occupancy less than 0.9.

Mol	Type	Chain	Res	Atoms	RSCC	RSR	LLDF	B-factors( $\text{\AA}^2$ )	Q<0.9
5	NA	C	184	1/1	0.95	0.33	7.88	33,33,33,33	0

*Continued on next page...*

*Continued from previous page...*

Mol	Type	Chain	Res	Atoms	RSCC	RSR	LLDF	B-factors( $\text{\AA}^2$ )	Q<0.9
5	NA	A	181	1/1	0.87	0.33	6.13	23,23,23,23	0
4	GOL	C	3731	6/6	0.91	0.24	4.38	55,56,57,57	0
3	DBH	A	179	11/11	0.70	0.38	4.28	101,101,101,102	0
4	GOL	A	180	6/6	0.80	0.28	3.28	53,54,54,55	0
7	MCK	C	179	39/39	0.73	0.28	2.93	59,70,73,73	0
2	DBS	A	301	17/17	0.77	0.23	2.37	58,61,65,65	0
3	DBH	A	303	11/11	0.77	0.22	0.72	88,88,88,88	0
4	GOL	C	182	6/6	0.91	0.12	-1.03	70,71,71,71	0
6	SO4	A	182	5/5	0.83	0.36	-	92,92,92,92	0
4	GOL	A	3731	6/6	0.91	0.23	-	59,60,60,60	0
4	GOL	C	181	6/6	0.71	0.27	-	74,74,74,74	0
4	GOL	C	180	6/6	0.92	0.24	-	67,67,67,67	0
4	GOL	C	183	6/6	0.85	0.25	-	43,43,44,44	0
8	CL	C	185	1/1	0.91	0.12	-	67,67,67,67	0

## 6.5 Other polymers [i](#)

There are no such residues in this entry.