



Full wwPDB X-ray Structure Validation Report ⓘ

Feb 1, 2016 – 06:00 PM GMT

PDB ID : 4K8P
Title : Crystal structure of probable sugar kinase protein from *Rhizobium etli* CFN 42 complexed with 2-ethylbenzyl alcohol
Authors : Malashkevich, V.N.; Bhosle, R.; Toro, R.; Hillerich, B.; Gizzi, A.; Garforth, S.; Kar, A.; Chan, M.K.; Laffuer, J.; Patel, H.; Matikainen, B.; Chamala, S.; Lim, S.; Celikgil, A.; Villegas, G.; Evans, B.; Love, J.; Fiser, A.; Khafizov, K.; Seidel, R.; Bonanno, J.B.; Almo, S.C.; New York Structural Genomics Research Consortium (NYSGRC)
Deposited on : 2013-04-18
Resolution : 1.50 Å(reported)

This is a Full wwPDB X-ray Structure Validation Report for a publicly released PDB entry.
We welcome your comments at validation@mail.wwpdb.org
A user guide is available at
<http://wwpdb.org/validation/2016/XrayValidationReportHelp>
with specific help available everywhere you see the ⓘ symbol.

The following versions of software and data (see [references ⓘ](#)) were used in the production of this report:

MolProbity : 4.02b-467
Mogul : 1.7 (RC4), CSD as536be (2015)
Xtriage (Phenix) : 1.9-1692
EDS : rb-20026688
Percentile statistics : 20151230.v01 (using entries in the PDB archive December 30th 2015)
Refmac : 5.8.0135
CCP4 : 6.5.0
Ideal geometry (proteins) : Engh & Huber (2001)
Ideal geometry (DNA, RNA) : Parkinson et al. (1996)
Validation Pipeline (wwPDB-VP) : trunk26865

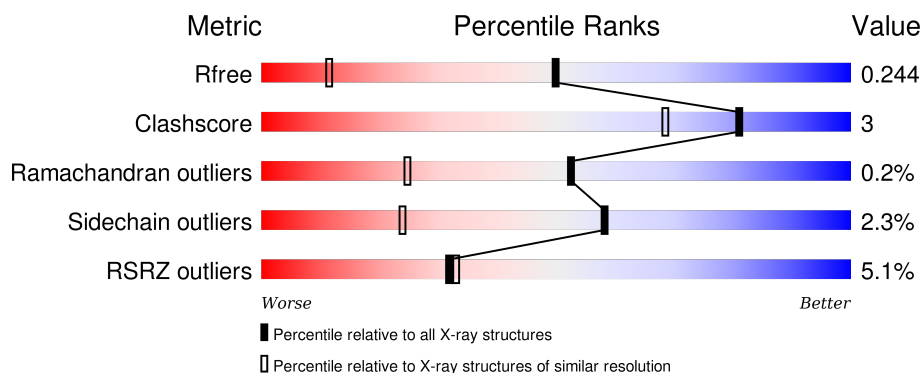
1 Overall quality at a glance ⓘ

The following experimental techniques were used to determine the structure:

X-RAY DIFFRACTION

The reported resolution of this entry is 1.50 Å.

Percentile scores (ranging between 0-100) for global validation metrics of the entry are shown in the following graphic. The table shows the number of entries on which the scores are based.



Metric	Whole archive (#Entries)	Similar resolution (#Entries, resolution range(Å))
R_{free}	91344	2072 (1.50-1.50)
Clashscore	102246	2274 (1.50-1.50)
Ramachandran outliers	100387	2218 (1.50-1.50)
Sidechain outliers	100360	2216 (1.50-1.50)
RSRZ outliers	91569	2075 (1.50-1.50)

The table below summarises the geometric issues observed across the polymeric chains and their fit to the electron density. The red, orange, yellow and green segments on the lower bar indicate the fraction of residues that contain outliers for ≥ 3 , 2, 1 and 0 types of geometric quality criteria. A grey segment represents the fraction of residues that are not modelled. The numeric value for each fraction is indicated below the corresponding segment, with a dot representing fractions $\leq 5\%$. The upper red bar (where present) indicates the fraction of residues that have poor fit to the electron density. The numeric value is given above the bar.

Mol	Chain	Length	Quality of chain
1	A	352	<div> <div>7%</div> <div>88%</div> <div>5% • 6%</div> </div>
1	B	352	<div> <div>3%</div> <div>86%</div> <div>7% •• 6%</div> </div>

The following table lists non-polymeric compounds, carbohydrate monomers and non-standard residues in protein, DNA, RNA chains that are outliers for geometric or electron-density-fit criteria:

Mol	Type	Chain	Res	Chirality	Geometry	Clashes	Electron density
3	12M	A	402	-	-	-	X
3	12M	B	402	-	-	-	X
4	DMS	A	403	-	-	-	X
4	DMS	B	403	-	-	-	X
5	K	A	404	-	-	-	X
5	K	B	404	-	-	-	X

2 Entry composition

There are 6 unique types of molecules in this entry. The entry contains 5780 atoms, of which 0 are hydrogens and 0 are deuteriums.

In the tables below, the ZeroOcc column contains the number of atoms modelled with zero occupancy, the AltConf column contains the number of residues with at least one atom in alternate conformation and the Trace column contains the number of residues modelled with at most 2 atoms.

- Molecule 1 is a protein called sugar kinase.

Mol	Chain	Residues	Atoms						ZeroOcc	AltConf	Trace
1	A	332	Total	C	N	O	S	Se	0	15	0
			2606	1630	456	502	8	10			
1	B	332	Total	C	N	O	S	Se	0	10	0
			2578	1610	452	498	8	10			

There are 44 discrepancies between the modelled and reference sequences:

Chain	Residue	Modelled	Actual	Comment	Reference
A	-23	MSE	-	EXPRESSION TAG	UNP Q2KDX6
A	-22	HIS	-	EXPRESSION TAG	UNP Q2KDX6
A	-21	HIS	-	EXPRESSION TAG	UNP Q2KDX6
A	-20	HIS	-	EXPRESSION TAG	UNP Q2KDX6
A	-19	HIS	-	EXPRESSION TAG	UNP Q2KDX6
A	-18	HIS	-	EXPRESSION TAG	UNP Q2KDX6
A	-17	HIS	-	EXPRESSION TAG	UNP Q2KDX6
A	-16	SER	-	EXPRESSION TAG	UNP Q2KDX6
A	-15	SER	-	EXPRESSION TAG	UNP Q2KDX6
A	-14	GLY	-	EXPRESSION TAG	UNP Q2KDX6
A	-13	VAL	-	EXPRESSION TAG	UNP Q2KDX6
A	-12	ASP	-	EXPRESSION TAG	UNP Q2KDX6
A	-11	LEU	-	EXPRESSION TAG	UNP Q2KDX6
A	-10	GLY	-	EXPRESSION TAG	UNP Q2KDX6
A	-9	THR	-	EXPRESSION TAG	UNP Q2KDX6
A	-8	GLU	-	EXPRESSION TAG	UNP Q2KDX6
A	-7	ASN	-	EXPRESSION TAG	UNP Q2KDX6
A	-6	LEU	-	EXPRESSION TAG	UNP Q2KDX6
A	-5	TYR	-	EXPRESSION TAG	UNP Q2KDX6
A	-4	PHE	-	EXPRESSION TAG	UNP Q2KDX6
A	-3	GLN	-	EXPRESSION TAG	UNP Q2KDX6
A	-2	SER	-	EXPRESSION TAG	UNP Q2KDX6
B	-23	MSE	-	EXPRESSION TAG	UNP Q2KDX6
B	-22	HIS	-	EXPRESSION TAG	UNP Q2KDX6
B	-21	HIS	-	EXPRESSION TAG	UNP Q2KDX6

Continued on next page...

Continued from previous page...

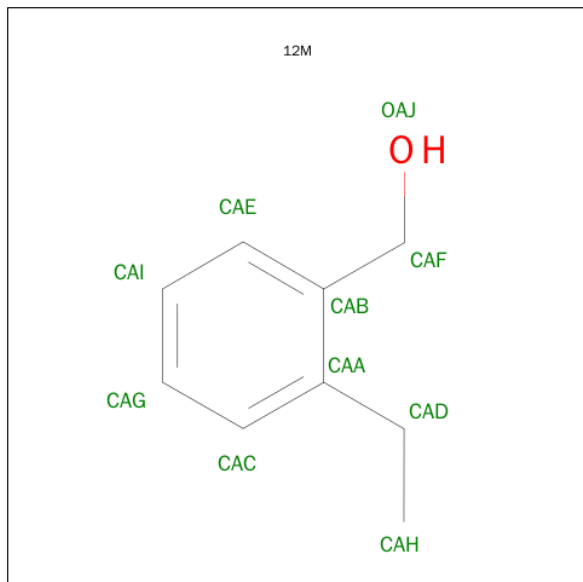
Chain	Residue	Modelled	Actual	Comment	Reference
B	-20	HIS	-	EXPRESSION TAG	UNP Q2KDX6
B	-19	HIS	-	EXPRESSION TAG	UNP Q2KDX6
B	-18	HIS	-	EXPRESSION TAG	UNP Q2KDX6
B	-17	HIS	-	EXPRESSION TAG	UNP Q2KDX6
B	-16	SER	-	EXPRESSION TAG	UNP Q2KDX6
B	-15	SER	-	EXPRESSION TAG	UNP Q2KDX6
B	-14	GLY	-	EXPRESSION TAG	UNP Q2KDX6
B	-13	VAL	-	EXPRESSION TAG	UNP Q2KDX6
B	-12	ASP	-	EXPRESSION TAG	UNP Q2KDX6
B	-11	LEU	-	EXPRESSION TAG	UNP Q2KDX6
B	-10	GLY	-	EXPRESSION TAG	UNP Q2KDX6
B	-9	THR	-	EXPRESSION TAG	UNP Q2KDX6
B	-8	GLU	-	EXPRESSION TAG	UNP Q2KDX6
B	-7	ASN	-	EXPRESSION TAG	UNP Q2KDX6
B	-6	LEU	-	EXPRESSION TAG	UNP Q2KDX6
B	-5	TYR	-	EXPRESSION TAG	UNP Q2KDX6
B	-4	PHE	-	EXPRESSION TAG	UNP Q2KDX6
B	-3	GLN	-	EXPRESSION TAG	UNP Q2KDX6
B	-2	SER	-	EXPRESSION TAG	UNP Q2KDX6

- Molecule 2 is ADENOSINE (three-letter code: ADN) (formula: $C_{10}H_{13}N_5O_4$).



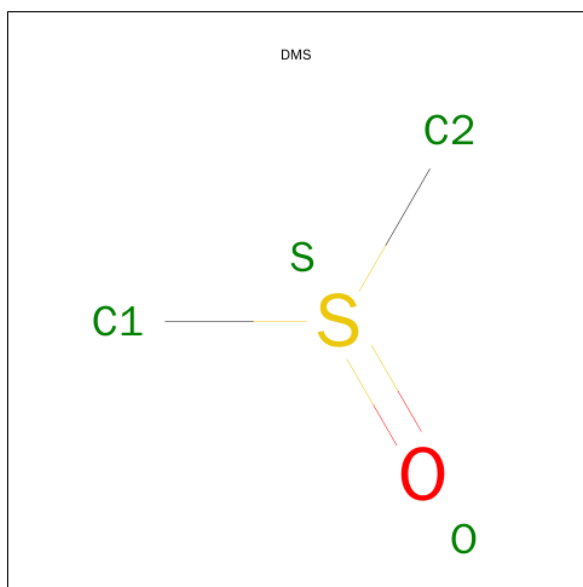
Mol	Chain	Residues	Atoms				ZeroOcc	AltConf
2	A	1	Total	C	N	O	0	0
			19	10	5	4		
2	B	1	Total	C	N	O	0	0
			19	10	5	4		

- Molecule 3 is (2-ETHYLPHENYL)METHANOL (three-letter code: 12M) (formula: $C_9H_{12}O$).



Mol	Chain	Residues	Atoms			ZeroOcc	AltConf
3	A	1	Total	C	O	0	0
			10	9	1		
3	B	1	Total	C	O	0	0
			10	9	1		

- Molecule 4 is DIMETHYL SULFOXIDE (three-letter code: DMS) (formula: C_2H_6OS).



Mol	Chain	Residues	Atoms	ZeroOcc	AltConf
4	A	1	Total C O S 4 2 1 1	0	0
4	B	1	Total C O S 4 2 1 1	0	0

- Molecule 5 is POTASSIUM ION (three-letter code: K) (formula: K).

Mol	Chain	Residues	Atoms	ZeroOcc	AltConf
5	B	1	Total K 1 1	0	0
5	A	1	Total K 1 1	0	0

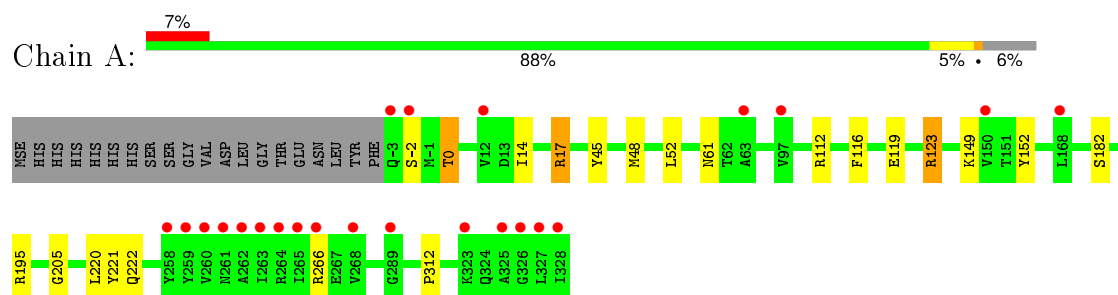
- Molecule 6 is water.

Mol	Chain	Residues	Atoms	ZeroOcc	AltConf
6	A	238	Total O 238 238	0	0
6	B	290	Total O 290 290	0	0

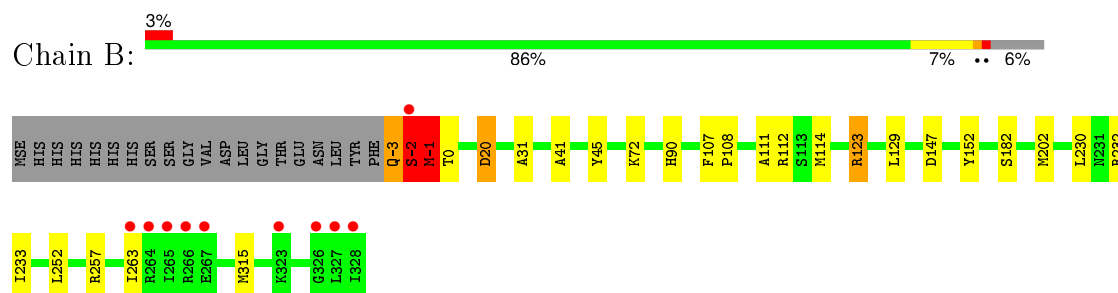
3 Residue-property plots

These plots are drawn for all protein, RNA and DNA chains in the entry. The first graphic for a chain summarises the proportions of errors displayed in the second graphic. The second graphic shows the sequence view annotated by issues in geometry and electron density. Residues are color-coded according to the number of geometric quality criteria for which they contain at least one outlier: green = 0, yellow = 1, orange = 2 and red = 3 or more. A red dot above a residue indicates a poor fit to the electron density ($\text{RSRZ} > 2$). Stretches of 2 or more consecutive residues without any outlier are shown as a green connector. Residues present in the sample, but not in the model, are shown in grey.

- Molecule 1: sugar kinase



- Molecule 1: sugar kinase



4 Data and refinement statistics

Property	Value	Source
Space group	P 1 21 1	Depositor
Cell constants a, b, c, α , β , γ	51.43Å 80.82Å 82.59Å 90.00° 97.85° 90.00°	Depositor
Resolution (Å)	40.09 – 1.50 40.09 – 1.49	Depositor EDS
% Data completeness (in resolution range)	85.2 (40.09-1.50) 84.0 (40.09-1.49)	Depositor EDS
R_{merge}	0.06	Depositor
R_{sym}	(Not available)	Depositor
$\langle I/\sigma(I) \rangle$ ¹	1.16 (at 1.49Å)	Xtriage
Refinement program	REFMAC 5.7.0029	Depositor
R, R_{free}	0.185 , 0.236 0.195 , 0.244	Depositor DCC
R_{free} test set	4549 reflections (5.25%)	DCC
Wilson B-factor (Å ²)	20.0	Xtriage
Anisotropy	0.238	Xtriage
Bulk solvent k_{sol} (e/Å ³), B_{sol} (Å ²)	0.33 , 44.1	EDS
Estimated twinning fraction	No twinning to report.	Xtriage
L-test for twinning ²	$\langle L \rangle = 0.50$, $\langle L^2 \rangle = 0.33$	Xtriage
Outliers	1 of 91616 reflections (0.001%)	Xtriage
F_o, F_c correlation	0.96	EDS
Total number of atoms	5780	wwPDB-VP
Average B, all atoms (Å ²)	25.0	wwPDB-VP

Xtriage's analysis on translational NCS is as follows: *The analyses of the Patterson function reveals a significant off-origin peak that is 30.38 % of the origin peak, indicating pseudo translational symmetry. The chance of finding a peak of this or larger height randomly in a structure without pseudo translational symmetry is equal to 1.3212e-03. The detected translational NCS is most likely also responsible for the elevated intensity ratio.*

¹ Intensities estimated from amplitudes.

² Theoretical values of $\langle |L| \rangle$, $\langle L^2 \rangle$ for acentric reflections are 0.5, 0.375 respectively for untwinned datasets, and 0.333, 0.2 for perfectly twinned datasets.

5 Model quality [i](#)

5.1 Standard geometry [i](#)

Bond lengths and bond angles in the following residue types are not validated in this section: ADN, K, DMS, 12M

The Z score for a bond length (or angle) is the number of standard deviations the observed value is removed from the expected value. A bond length (or angle) with $|Z| > 5$ is considered an outlier worth inspection. RMSZ is the root-mean-square of all Z scores of the bond lengths (or angles).

Mol	Chain	Bond lengths		Bond angles	
		RMSZ	$\# Z > 5$	RMSZ	$\# Z > 5$
1	A	0.50	3/2677 (0.1%)	0.62	0/3597
1	B	0.56	4/2634 (0.2%)	0.68	1/3540 (0.0%)
All	All	0.53	7/5311 (0.1%)	0.65	1/7137 (0.0%)

Chiral center outliers are detected by calculating the chiral volume of a chiral center and verifying if the center is modelled as a planar moiety or with the opposite hand. A planarity outlier is detected by checking planarity of atoms in a peptide group, atoms in a mainchain group or atoms of a sidechain that are expected to be planar.

Mol	Chain	#Chirality outliers	#Planarity outliers
1	B	0	1

All (7) bond length outliers are listed below:

Mol	Chain	Res	Type	Atoms	Z	Observed(Å)	Ideal(Å)
1	B	20[A]	ASP	N-CA	5.72	1.57	1.46
1	B	20[B]	ASP	N-CA	5.72	1.57	1.46
1	B	123[A]	ARG	CA-C	5.38	1.67	1.52
1	B	123[B]	ARG	CA-C	5.38	1.67	1.52
1	A	123[A]	ARG	CA-C	5.25	1.66	1.52
1	A	123[B]	ARG	CA-C	5.25	1.66	1.52
1	A	266	ARG	CD-NE	5.11	1.55	1.46

All (1) bond angle outliers are listed below:

Mol	Chain	Res	Type	Atoms	Z	Observed(°)	Ideal(°)
1	B	-1	MSE	CA-CB-CG	-5.92	103.23	113.30

There are no chirality outliers.

All (1) planarity outliers are listed below:

Mol	Chain	Res	Type	Group
1	B	-2	SER	Peptide

5.2 Too-close contacts ⓘ

In the following table, the Non-H and H(model) columns list the number of non-hydrogen atoms and hydrogen atoms in the chain respectively. The H(added) column lists the number of hydrogen atoms added and optimized by MolProbity. The Clashes column lists the number of clashes within the asymmetric unit, whereas Symm-Clashes lists symmetry related clashes.

Mol	Chain	Non-H	H(model)	H(added)	Clashes	Symm-Clashes
1	A	2606	0	2603	17	0
1	B	2578	0	2560	20	0
2	A	19	0	13	0	0
2	B	19	0	13	0	0
3	A	10	0	12	1	0
3	B	10	0	12	2	0
4	A	4	0	6	1	0
4	B	4	0	6	0	0
5	A	1	0	0	0	0
5	B	1	0	0	0	0
6	A	238	0	0	3	0
6	B	290	0	0	2	0
All	All	5780	0	5225	35	0

The all-atom clashscore is defined as the number of clashes found per 1000 atoms (including hydrogen atoms). The all-atom clashscore for this structure is 3.

All (35) close contacts within the same asymmetric unit are listed below, sorted by their clash magnitude.

Atom-1	Atom-2	Interatomic distance (Å)	Clash overlap (Å)
1:B:72[B]:LYS:HE2	1:B:72[B]:LYS:HA	1.59	0.84
1:B:252:LEU:HD23	1:B:257:ARG:HG2	1.71	0.72
1:B:263:ILE:HD13	6:B:623:HOH:O	1.97	0.64
1:A:205:GLY:HA2	6:A:688:HOH:O	2.02	0.60
1:B:72[B]:LYS:CA	1:B:72[B]:LYS:HE2	2.25	0.60
1:A:195[B]:ARG:HH21	1:A:221:TYR:HA	1.67	0.59
1:A:17:ARG:HH22	1:A:119:GLU:HG3	1.69	0.58
1:B:0:THR:HG22	1:B:147:ASP:O	2.05	0.56
1:A:0:THR:HG21	1:A:149:LYS:HG3	1.89	0.54
1:B:45:TYR:CE2	3:B:402:12M:HAD1	2.43	0.53
1:A:195[B]:ARG:NE	1:A:220:LEU:O	2.43	0.52

Continued on next page...

Continued from previous page...

Atom-1	Atom-2	Interatomic distance (Å)	Clash overlap (Å)
1:A:0:THR:CG2	1:A:149:LYS:NZ	2.74	0.51
1:A:0:THR:HG22	1:A:149:LYS:HZ1	1.76	0.50
1:A:0:THR:HG22	1:A:149:LYS:NZ	2.27	0.50
1:B:-3:GLN:HG3	6:B:691:HOH:O	2.12	0.50
1:A:45:TYR:O	1:B:90:HIS:HE1	1.95	0.49
1:A:45:TYR:O	1:B:90:HIS:CE1	2.67	0.48
1:A:14:ILE:CD1	3:A:402:12M:HAC	2.44	0.48
1:A:48:MSE:HG3	1:A:116:PHE:CE1	2.49	0.47
1:B:152:TYR:HA	1:B:182:SER:O	2.14	0.47
1:B:230:LEU:HD22	1:B:252:LEU:HD11	1.96	0.47
1:B:41:ALA:HA	1:B:114:MSE:HE1	1.96	0.46
1:A:0:THR:CG2	1:A:149:LYS:HZ2	2.29	0.46
4:A:403:DMS:H11	6:A:737:HOH:O	2.15	0.45
1:B:45:TYR:CE2	3:B:402:12M:CAD	3.00	0.45
1:A:52[B]:LEU:HD11	1:B:315:MSE:SE	2.67	0.44
1:B:107:PHE:HA	1:B:108:PRO:C	2.37	0.44
1:B:111:ALA:HB2	1:B:129:LEU:O	2.18	0.43
1:A:61:ASN:ND2	1:A:312:PRO:HB2	2.34	0.43
1:B:263:ILE:HG13	1:B:263:ILE:O	2.19	0.43
1:A:152:TYR:HA	1:A:182:SER:O	2.19	0.42
1:B:-3:GLN:O	1:B:-1:MSE:N	2.53	0.41
1:B:202:MSE:HE1	1:B:233:ILE:HG13	2.03	0.41
1:A:222:GLN:HA	6:A:718:HOH:O	2.19	0.41

There are no symmetry-related clashes.

5.3 Torsion angles [i](#)

5.3.1 Protein backbone [i](#)

In the following table, the Percentiles column shows the percent Ramachandran outliers of the chain as a percentile score with respect to all X-ray entries followed by that with respect to entries of similar resolution.

The Analysed column shows the number of residues for which the backbone conformation was analysed, and the total number of residues.

Mol	Chain	Analysed	Favoured	Allowed	Outliers	Percentiles	
1	A	345/352 (98%)	338 (98%)	7 (2%)	0	100	100
1	B	340/352 (97%)	333 (98%)	6 (2%)	1 (0%)	46	19

Continued on next page...

Continued from previous page...

Mol	Chain	Analysed	Favoured	Allowed	Outliers	Percentiles
All	All	685/704 (97%)	671 (98%)	13 (2%)	1 (0%)	52 26

All (1) Ramachandran outliers are listed below:

Mol	Chain	Res	Type
1	B	-2	SER

5.3.2 Protein sidechains ⓘ

In the following table, the Percentiles column shows the percent sidechain outliers of the chain as a percentile score with respect to all X-ray entries followed by that with respect to entries of similar resolution.

The Analysed column shows the number of residues for which the sidechain conformation was analysed, and the total number of residues.

Mol	Chain	Analysed	Rotameric	Outliers	Percentiles
1	A	274/266 (103%)	268 (98%)	6 (2%)	60 25
1	B	269/266 (101%)	260 (97%)	9 (3%)	45 12
All	All	543/532 (102%)	528 (97%)	15 (3%)	58 17

All (15) residues with a non-rotameric sidechain are listed below:

Mol	Chain	Res	Type
1	A	-2	SER
1	A	0	THR
1	A	17	ARG
1	A	112	ARG
1	A	123[A]	ARG
1	A	123[B]	ARG
1	B	-3	GLN
1	B	-2	SER
1	B	-1	MSE
1	B	20[A]	ASP
1	B	20[B]	ASP
1	B	112	ARG
1	B	123[A]	ARG
1	B	123[B]	ARG
1	B	232	ARG

Some sidechains can be flipped to improve hydrogen bonding and reduce clashes. There are no

such sidechains identified.

5.3.3 RNA ⓘ

There are no RNA molecules in this entry.

5.4 Non-standard residues in protein, DNA, RNA chains ⓘ

There are no non-standard protein/DNA/RNA residues in this entry.

5.5 Carbohydrates ⓘ

There are no carbohydrates in this entry.

5.6 Ligand geometry ⓘ

Of 8 ligands modelled in this entry, 2 are monoatomic - leaving 6 for Mogul analysis.

In the following table, the Counts columns list the number of bonds (or angles) for which Mogul statistics could be retrieved, the number of bonds (or angles) that are observed in the model and the number of bonds (or angles) that are defined in the chemical component dictionary. The Link column lists molecule types, if any, to which the group is linked. The Z score for a bond length (or angle) is the number of standard deviations the observed value is removed from the expected value. A bond length (or angle) with $|Z| > 2$ is considered an outlier worth inspection. RMSZ is the root-mean-square of all Z scores of the bond lengths (or angles).

Mol	Type	Chain	Res	Link	Bond lengths			Bond angles		
					Counts	RMSZ	# $ Z > 2$	Counts	RMSZ	# $ Z > 2$
2	ADN	A	401	-	16,21,21	1.11	1 (6%)	16,31,31	2.93	5 (31%)
3	12M	A	402	-	10,10,10	0.70	0	11,12,12	2.24	5 (45%)
4	DMS	A	403	-	3,3,3	0.57	0	3,3,3	0.35	0
2	ADN	B	401	-	16,21,21	1.18	1 (6%)	16,31,31	3.34	4 (25%)
3	12M	B	402	-	10,10,10	0.70	0	11,12,12	1.35	2 (18%)
4	DMS	B	403	-	3,3,3	0.47	0	3,3,3	0.56	0

In the following table, the Chirals column lists the number of chiral outliers, the number of chiral centers analysed, the number of these observed in the model and the number defined in the chemical component dictionary. Similar counts are reported in the Torsion and Rings columns. '-' means no outliers of that kind were identified.

Mol	Type	Chain	Res	Link	Chirals	Torsions	Rings
2	ADN	A	401	-	-	0/2/22/22	0/3/3/3

Continued on next page...

Continued from previous page...

Mol	Type	Chain	Res	Link	Chirals	Torsions	Rings
3	12M	A	402	-	-	0/4/4/4	0/1/1/1
4	DMS	A	403	-	-	0/0/0/0	0/0/0/0
2	ADN	B	401	-	-	0/2/22/22	0/3/3/3
3	12M	B	402	-	-	0/4/4/4	0/1/1/1
4	DMS	B	403	-	-	0/0/0/0	0/0/0/0

All (2) bond length outliers are listed below:

Mol	Chain	Res	Type	Atoms	Z	Observed(Å)	Ideal(Å)
2	A	401	ADN	C5-C4	2.90	1.47	1.40
2	B	401	ADN	C5-C4	3.08	1.47	1.40

All (16) bond angle outliers are listed below:

Mol	Chain	Res	Type	Atoms	Z	Observed(°)	Ideal(°)
2	B	401	ADN	N3-C2-N1	-9.97	121.26	128.89
2	A	401	ADN	N3-C2-N1	-8.95	122.04	128.89
2	B	401	ADN	C4'-O4'-C1'	-6.33	102.77	109.72
2	A	401	ADN	C4'-O4'-C1'	-5.02	104.20	109.72
3	A	402	12M	CAC-CAA-CAB	-4.47	114.01	118.95
2	B	401	ADN	C1'-N9-C4	-4.26	120.52	126.94
2	A	401	ADN	C1'-N9-C4	-3.44	121.75	126.94
3	A	402	12M	CAG-CAI-CAE	-3.18	115.54	120.19
2	A	401	ADN	C4-C5-N7	-2.92	106.79	109.48
3	B	402	12M	CAG-CAI-CAE	-2.79	116.10	120.19
3	B	402	12M	CAI-CAE-CAB	2.08	124.12	120.90
2	A	401	ADN	C2-N1-C6	2.46	123.16	118.77
3	A	402	12M	CAI-CAE-CAB	2.63	124.96	120.90
3	A	402	12M	OAJ-CAF-CAB	2.85	120.29	111.76
3	A	402	12M	CAG-CAC-CAA	2.93	125.44	120.90
2	B	401	ADN	C2-N1-C6	3.18	124.45	118.77

There are no chirality outliers.

There are no torsion outliers.

There are no ring outliers.

3 monomers are involved in 4 short contacts:

Mol	Chain	Res	Type	Clashes	Symm-Clashes
3	A	402	12M	1	0
4	A	403	DMS	1	0
3	B	402	12M	2	0

5.7 Other polymers

There are no such residues in this entry.

5.8 Polymer linkage issues

There are no chain breaks in this entry.

6 Fit of model and data ⓘ

6.1 Protein, DNA and RNA chains ⓘ

In the following table, the column labelled ‘#RSRZ> 2’ contains the number (and percentage) of RSRZ outliers, followed by percent RSRZ outliers for the chain as percentile scores relative to all X-ray entries and entries of similar resolution. The OWAB column contains the minimum, median, 95th percentile and maximum values of the occupancy-weighted average B-factor per residue. The column labelled ‘Q< 0.9’ lists the number of (and percentage) of residues with an average occupancy less than 0.9.

Mol	Chain	Analysed	<RSRZ>	#RSRZ>2	OWAB(Å ²)	Q<0.9
1	A	322/352 (91%)	0.47	23 (7%) 19 19	16, 24, 40, 65	0
1	B	322/352 (91%)	0.25	10 (3%) 52 55	13, 20, 36, 63	0
All	All	644/704 (91%)	0.36	33 (5%) 32 33	13, 22, 37, 65	0

All (33) RSRZ outliers are listed below:

Mol	Chain	Res	Type	RSRZ
1	B	266	ARG	7.3
1	A	328	ILE	7.1
1	B	263	ILE	7.1
1	B	328	ILE	5.5
1	A	264	ARG	5.5
1	A	266	ARG	4.5
1	B	265	ILE	4.4
1	B	-2	SER	4.1
1	B	264	ARG	4.1
1	A	-2	SER	3.9
1	A	263	ILE	3.8
1	B	267	GLU	3.7
1	A	-3	GLN	3.3
1	A	265	ILE	3.3
1	A	325	ALA	3.3
1	A	262	ALA	3.2
1	A	327	LEU	3.1
1	A	326	GLY	2.9
1	A	260	VAL	2.7
1	A	97	VAL	2.7
1	A	323	LYS	2.6
1	B	323	LYS	2.6
1	B	327	LEU	2.6
1	A	168	LEU	2.4

Continued on next page...

Continued from previous page...

Mol	Chain	Res	Type	RSRZ
1	A	63	ALA	2.4
1	A	289	GLY	2.4
1	A	12	VAL	2.3
1	A	268	VAL	2.3
1	A	258	TYR	2.2
1	B	326	GLY	2.2
1	A	261	ASN	2.1
1	A	150	VAL	2.0
1	A	259	TYR	2.0

6.2 Non-standard residues in protein, DNA, RNA chains [i](#)

There are no non-standard protein/DNA/RNA residues in this entry.

6.3 Carbohydrates [i](#)

There are no carbohydrates in this entry.

6.4 Ligands [i](#)

In the following table, the Atoms column lists the number of modelled atoms in the group and the number defined in the chemical component dictionary. LLDF column lists the quality of electron density of the group with respect to its neighbouring residues in protein, DNA or RNA chains. The B-factors column lists the minimum, median, 95th percentile and maximum values of B factors of atoms in the group. The column labelled 'Q < 0.9' lists the number of atoms with occupancy less than 0.9.

Mol	Type	Chain	Res	Atoms	RSCC	RSR	LLDF	B-factors(Å ²)	Q<0.9
5	K	B	404	1/1	0.99	0.25	13.56	35,35,35,35	0
5	K	A	404	1/1	0.96	0.25	11.61	35,35,35,35	0
4	DMS	A	403	4/4	0.67	0.31	8.20	40,48,56,61	0
4	DMS	B	403	4/4	0.54	0.20	4.69	47,54,58,59	0
3	12M	A	402	10/10	0.89	0.20	3.99	13,15,17,23	0
3	12M	B	402	10/10	0.91	0.15	2.53	12,15,17,22	0
2	ADN	B	401	19/19	0.96	0.11	0.43	12,15,17,17	0
2	ADN	A	401	19/19	0.96	0.11	-0.12	15,16,18,19	0

6.5 Other polymers [i](#)

There are no such residues in this entry.