



wwPDB X-ray Structure Validation Summary Report ⓘ

Feb 1, 2016 – 06:04 PM GMT

PDB ID : 4KGL
Title : Crystal structure of human alpha-L-iduronidase complex with [2R,3R,4R,5S]-2-carboxy-3,4,5-trihydroxy-piperidine
Authors : Bie, H.; Yin, J.; He, X.; Kermode, A.R.; Goddard-Borger, E.D.; Withers, S.G.; James, M.N.G.
Deposited on : 2013-04-29
Resolution : 2.70 Å(reported)

This is a wwPDB X-ray Structure Validation Summary Report for a publicly released PDB entry.
We welcome your comments at validation@mail.wwpdb.org
A user guide is available at
<http://wwpdb.org/validation/2016/XrayValidationReportHelp>
with specific help available everywhere you see the ⓘ symbol.

The following versions of software and data (see [references ⓘ](#)) were used in the production of this report:

MolProbity : 4.02b-467
Mogul : 1.7 (RC4), CSD as536be (2015)
Xtriage (Phenix) : 1.9-1692
EDS : rb-20026688
Percentile statistics : 20151230.v01 (using entries in the PDB archive December 30th 2015)
Refmac : 5.8.0135
CCP4 : 6.5.0
Ideal geometry (proteins) : Engh & Huber (2001)
Ideal geometry (DNA, RNA) : Parkinson et al. (1996)
Validation Pipeline (wwPDB-VP) : trunk26865

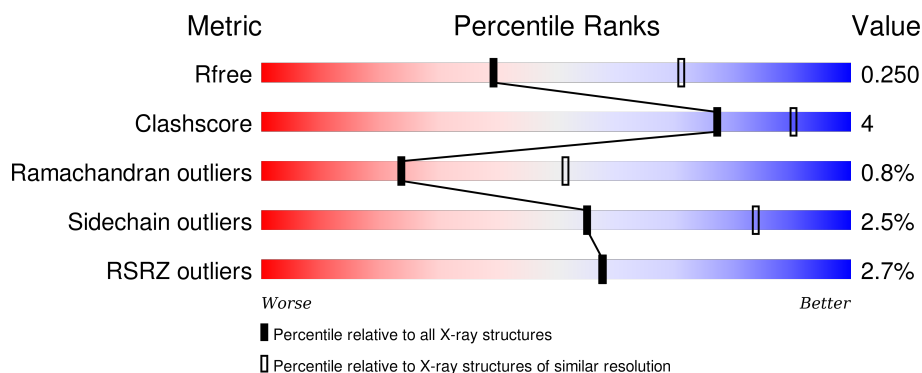
1 Overall quality at a glance

The following experimental techniques were used to determine the structure:

X-RAY DIFFRACTION



The reported resolution of this entry is 2.70 Å.

Percentile scores (ranging between 0-100) for global validation metrics of the entry are shown in the following graphic. The table shows the number of entries on which the scores are based.



Metric	Whole archive (#Entries)	Similar resolution (#Entries, resolution range(Å))
R_{free}	91344	2103 (2.70-2.70)
Clashscore	102246	2422 (2.70-2.70)
Ramachandran outliers	100387	2382 (2.70-2.70)
Sidechain outliers	100360	2382 (2.70-2.70)
RSRZ outliers	91569	2107 (2.70-2.70)

The table below summarises the geometric issues observed across the polymeric chains and their fit to the electron density. The red, orange, yellow and green segments on the lower bar indicate the fraction of residues that contain outliers for ≥ 3 , 2, 1 and 0 types of geometric quality criteria. A grey segment represents the fraction of residues that are not modelled. The numeric value for each fraction is indicated below the corresponding segment, with a dot representing fractions $\leq 5\%$. The upper red bar (where present) indicates the fraction of residues that have poor fit to the electron density. The numeric value is given above the bar.

Mol	Chain	Length	Quality of chain
1	A	627	 4% 85% 10% 5%
1	B	627	 % 84% 13% 5%

The following table lists non-polymeric compounds, carbohydrate monomers and non-standard residues in protein, DNA, RNA chains that are outliers for geometric or electron-density-fit criteria:

Mol	Type	Chain	Res	Chirality	Geometry	Clashes	Electron density
5	GOL	B	913	-	-	-	X
6	IDJ	A	910	-	-	-	X

2 Entry composition [i](#)

There are 9 unique types of molecules in this entry. The entry contains 9990 atoms, of which 0 are hydrogens and 0 are deuteriums.

In the tables below, the ZeroOcc column contains the number of atoms modelled with zero occupancy, the AltConf column contains the number of residues with at least one atom in alternate conformation and the Trace column contains the number of residues modelled with at most 2 atoms.

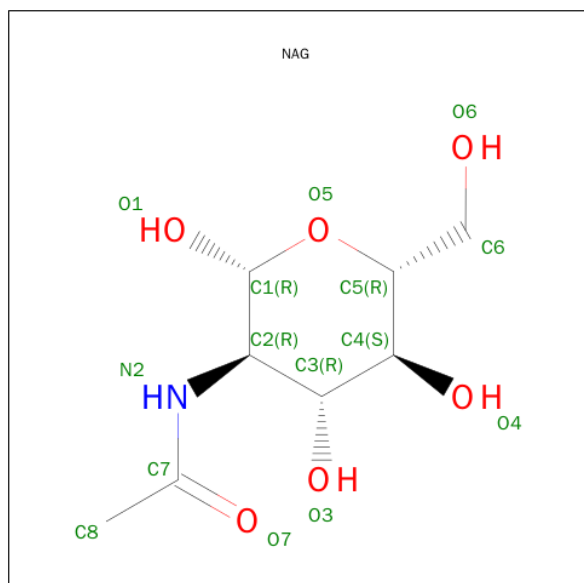
- Molecule 1 is a protein called Alpha-L-iduronidase.

Mol	Chain	Residues	Atoms					ZeroOcc	AltConf	Trace
1	A	595	Total	C	N	O	S	0	0	0
			4734	3030	852	840	12			
1	B	612	Total	C	N	O	S	0	4	0
			4888	3121	886	867	14			

There are 6 discrepancies between the modelled and reference sequences:

Chain	Residue	Modelled	Actual	Comment	Reference
A	33	GLN	HIS	SEE REMARK 999	UNP P35475
A	63	PRO	GLN	SEE REMARK 999	UNP P35475
A	105	GLN	ARG	SEE REMARK 999	UNP P35475
B	33	GLN	HIS	SEE REMARK 999	UNP P35475
B	63	PRO	GLN	SEE REMARK 999	UNP P35475
B	105	GLN	ARG	SEE REMARK 999	UNP P35475

- Molecule 2 is SUGAR (N-ACETYL-D-GLUCOSAMINE) (three-letter code: NAG) (formula: $C_8H_{15}NO_6$).



Mol	Chain	Residues	Atoms				ZeroOcc	AltConf
2	A	1	Total	C	N	O	0	0
			14	8	1	5		
2	B	1	Total	C	N	O	0	0
			14	8	1	5		

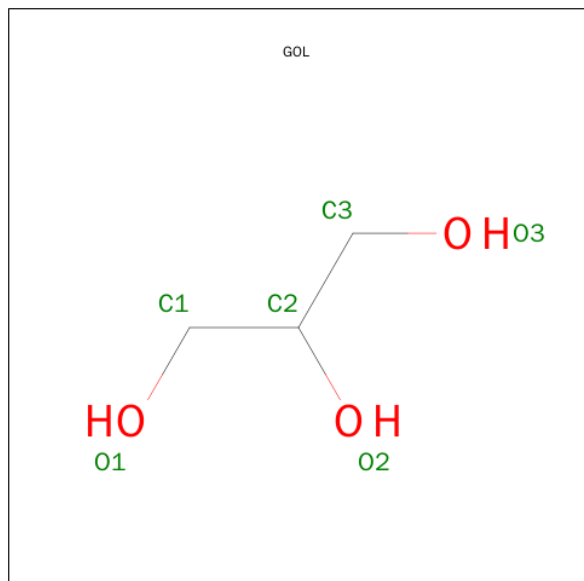
- Molecule 3 is a polymer of unknown type called SUGAR (2-MER).

Mol	Chain	Residues	Atoms				ZeroOcc	AltConf
3	A	2	Total	C	N	O	0	0
			28	16	2	10		
3	B	2	Total	C	N	O	0	0
			28	16	2	10		

- Molecule 4 is a polymer of unknown type called SUGAR (5-MER).

Mol	Chain	Residues	Atoms				ZeroOcc	AltConf
4	A	5	Total	C	N	O	0	0
			61	34	2	25		

- Molecule 5 is GLYCEROL (three-letter code: GOL) (formula: C₃H₈O₃).



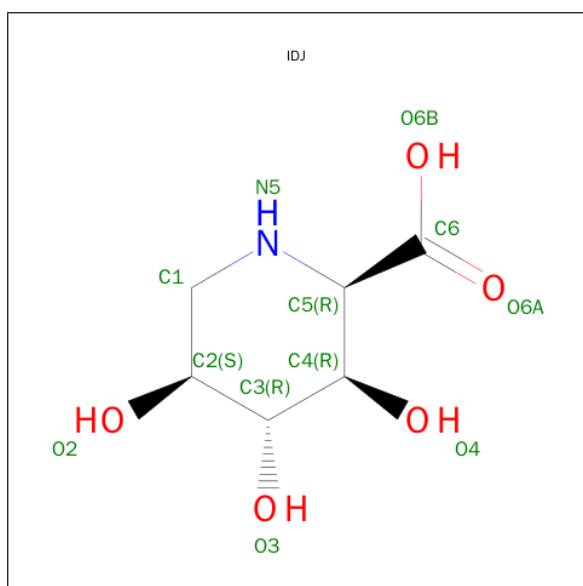
Mol	Chain	Residues	Atoms			ZeroOcc	AltConf
5	A	1	Total	C	O	0	0
			6	3	3		
5	B	1	Total	C	O	0	0
			6	3	3		

Continued on next page...

Continued from previous page...

Mol	Chain	Residues	Atoms			ZeroOcc	AltConf
5	B	1	Total	C	O	0	0
			6	3	3		
5	B	1	Total	C	O	0	0
			6	3	3		
5	B	1	Total	C	O	0	0
			6	3	3		

- Molecule 6 is (2R,3R,4R,5S)-3,4,5-TRIHIDROXYPIPERIDINE-2-CARBOXYLIC ACID (three-letter code: IDJ) (formula: C₆H₁₁NO₅).

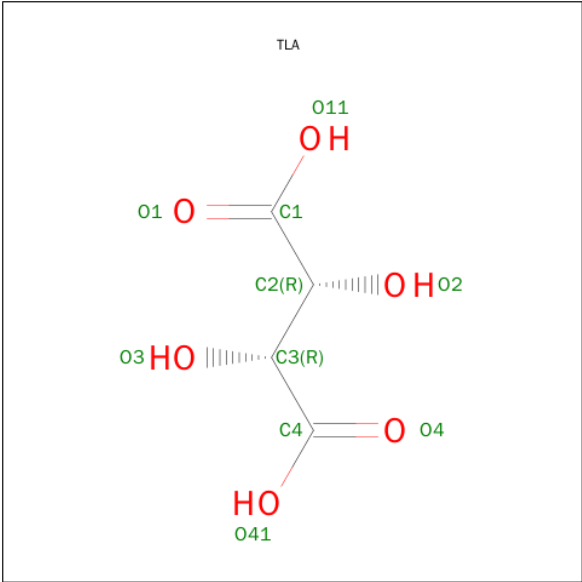


Mol	Chain	Residues	Atoms				ZeroOcc	AltConf
6	A	1	Total	C	N	O	0	0
			12	6	1	5		
6	B	1	Total	C	N	O	0	0
			12	6	1	5		

- Molecule 7 is a polymer of unknown type called SUGAR (9-MER).

Mol	Chain	Residues	Atoms				ZeroOcc	AltConf
7	B	9	Total	C	N	O	0	0
			105	58	2	45		

- Molecule 8 is L(+)-TARTARIC ACID (three-letter code: TLA) (formula: C₄H₆O₆).



Mol	Chain	Residues	Atoms			ZeroOcc	AltConf
8	B	1	Total	C	O	0	0
			10	4	6		

- Molecule 9 is water.

Mol	Chain	Residues	Atoms		ZeroOcc	AltConf
9	A	20	Total	O	0	0
			20	20		
9	B	34	Total	O	0	0
			34	34		

4 Data and refinement statistics

Property	Value	Source
Space group	H 3	Depositor
Cell constants a, b, c, α , β , γ	259.36 Å 259.36 Å 71.57 Å 90.00° 90.00° 120.00°	Depositor
Resolution (Å)	49.06 – 2.70 49.01 – 2.70	Depositor EDS
% Data completeness (in resolution range)	99.4 (49.06-2.70) 99.4 (49.01-2.70)	Depositor EDS
R_{merge}	0.17	Depositor
R_{sym}	(Not available)	Depositor
$\langle I/\sigma(I) \rangle$ ¹	2.25 (at 2.69 Å)	Xtriage
Refinement program	REFMAC 5.7.0032	Depositor
R, R_{free}	0.204 , 0.254 0.202 , 0.250	Depositor DCC
R_{free} test set	2481 reflections (5.34%)	DCC
Wilson B-factor (Å ²)	48.2	Xtriage
Anisotropy	0.797	Xtriage
Bulk solvent k_{sol} (e/Å ³), B_{sol} (Å ²)	0.36 , 50.3	EDS
Estimated twinning fraction	0.007 for h,-h-k,-l	Xtriage
L-test for twinning ²	$\langle L \rangle = 0.49$, $\langle L^2 \rangle = 0.32$	Xtriage
Outliers	0 of 48951 reflections	Xtriage
F_o, F_c correlation	0.94	EDS
Total number of atoms	9990	wwPDB-VP
Average B, all atoms (Å ²)	53.0	wwPDB-VP

Xtriage's analysis on translational NCS is as follows: *The largest off-origin peak in the Patterson function is 2.89% of the height of the origin peak. No significant pseudotranslation is detected.*

¹ Intensities estimated from amplitudes.

² Theoretical values of $\langle |L| \rangle$, $\langle L^2 \rangle$ for acentric reflections are 0.5, 0.375 respectively for untwinned datasets, and 0.333, 0.2 for perfectly twinned datasets.

5 Model quality

5.1 Standard geometry

Bond lengths and bond angles in the following residue types are not validated in this section: GOL, BMA, NAG, TLA, IDJ, MAN

The Z score for a bond length (or angle) is the number of standard deviations the observed value is removed from the expected value. A bond length (or angle) with $|Z| > 5$ is considered an outlier worth inspection. RMSZ is the root-mean-square of all Z scores of the bond lengths (or angles).

Mol	Chain	Bond lengths		Bond angles	
		RMSZ	# Z >5	RMSZ	# Z >5
1	A	0.34	0/4879	0.55	0/6666
1	B	0.36	0/5039	0.57	0/6886
All	All	0.35	0/9918	0.56	0/13552

There are no bond length outliers.

There are no bond angle outliers.

There are no chirality outliers.

There are no planarity outliers.

5.2 Too-close contacts

In the following table, the Non-H and H(model) columns list the number of non-hydrogen atoms and hydrogen atoms in the chain respectively. The H(added) column lists the number of hydrogen atoms added and optimized by MolProbity. The Clashes column lists the number of clashes within the asymmetric unit, whereas Symm-Clashes lists symmetry related clashes.

Mol	Chain	Non-H	H(model)	H(added)	Clashes	Symm-Clashes
1	A	4734	0	4632	34	0
1	B	4888	0	4786	37	0
2	A	14	0	13	0	0
2	B	14	0	13	0	0
3	A	28	0	25	0	0
3	B	28	0	25	1	0
4	A	61	0	52	2	0
5	A	6	0	8	3	0
5	B	24	0	32	2	0
6	A	12	0	10	0	0
6	B	12	0	10	0	0

Continued on next page...

Continued from previous page...

Mol	Chain	Non-H	H(model)	H(added)	Clashes	Symm-Clashes
7	B	105	0	88	2	0
8	B	10	0	4	0	0
9	A	20	0	0	0	0
9	B	34	0	0	1	0
All	All	9990	0	9698	73	0

The all-atom clashscore is defined as the number of clashes found per 1000 atoms (including hydrogen atoms). The all-atom clashscore for this structure is 4.

The worst 5 of 73 close contacts within the same asymmetric unit are listed below, sorted by their clash magnitude.

Atom-1	Atom-2	Interatomic distance (Å)	Clash overlap (Å)
1:B:577[A]:CYS:SG	1:B:577[A]:CYS:O	2.33	0.86
1:A:315:ASP:HB2	1:A:478:ASN:OD1	1.77	0.83
4:A:906:BMA:H61	4:A:907:MAN:H5	1.74	0.69
1:B:334:LEU:HD21	1:B:343:TYR:HB3	1.80	0.63
1:B:270:ILE:HD11	3:B:902:NAG:H82	1.80	0.63

There are no symmetry-related clashes.

5.3 Torsion angles [i](#)

5.3.1 Protein backbone [i](#)

In the following table, the Percentiles column shows the percent Ramachandran outliers of the chain as a percentile score with respect to all X-ray entries followed by that with respect to entries of similar resolution.

The Analysed column shows the number of residues for which the backbone conformation was analysed, and the total number of residues.

Mol	Chain	Analysed	Favoured	Allowed	Outliers	Percentiles	
1	A	587/627 (94%)	543 (92%)	41 (7%)	3 (0%)	34	63
1	B	612/627 (98%)	569 (93%)	36 (6%)	7 (1%)	17	42
All	All	1199/1254 (96%)	1112 (93%)	77 (6%)	10 (1%)	24	51

5 of 10 Ramachandran outliers are listed below:

Mol	Chain	Res	Type
1	A	338	THR
1	A	339	SER
1	A	340	ALA
1	B	340	ALA
1	B	60	GLN

5.3.2 Protein sidechains ⓘ

In the following table, the Percentiles column shows the percent sidechain outliers of the chain as a percentile score with respect to all X-ray entries followed by that with respect to entries of similar resolution.

The Analysed column shows the number of residues for which the sidechain conformation was analysed, and the total number of residues.

Mol	Chain	Analysed	Rotameric	Outliers	Percentiles	
1	A	503/527 (95%)	494 (98%)	9 (2%)	66	89
1	B	520/527 (99%)	504 (97%)	16 (3%)	47	78
All	All	1023/1054 (97%)	998 (98%)	25 (2%)	55	85

5 of 25 residues with a non-rotameric sidechain are listed below:

Mol	Chain	Res	Type
1	B	59	SER
1	B	91	HIS
1	B	561	GLN
1	B	69	ASP
1	B	130	PHE

Some sidechains can be flipped to improve hydrogen bonding and reduce clashes. All (5) such sidechains are listed below:

Mol	Chain	Res	Type
1	A	87	GLN
1	A	125	GLN
1	A	281	GLN
1	A	587	GLN
1	B	147	GLN

5.3.3 RNA ⓘ

There are no RNA molecules in this entry.

5.4 Non-standard residues in protein, DNA, RNA chains ⓘ

There are no non-standard protein/DNA/RNA residues in this entry.

5.5 Carbohydrates ⓘ

18 carbohydrates are modelled in this entry.

In the following table, the Counts columns list the number of bonds (or angles) for which Mogul statistics could be retrieved, the number of bonds (or angles) that are observed in the model and the number of bonds (or angles) that are defined in the chemical component dictionary. The Link column lists molecule types, if any, to which the group is linked. The Z score for a bond length (or angle) is the number of standard deviations the observed value is removed from the expected value. A bond length (or angle) with $|Z| > 2$ is considered an outlier worth inspection. RMSZ is the root-mean-square of all Z scores of the bond lengths (or angles).

Mol	Type	Chain	Res	Link	Bond lengths			Bond angles		
					Counts	RMSZ	$\# Z > 2$	Counts	RMSZ	$\# Z > 2$
3	NAG	A	902	1,3	14,14,15	0.50	0	15,19,21	1.41	1 (6%)
3	NAG	A	903	3	14,14,15	0.57	0	15,19,21	0.97	1 (6%)
4	NAG	A	904	1,4	14,14,15	0.55	0	15,19,21	0.92	0
4	NAG	A	905	4	14,14,15	0.51	0	15,19,21	1.43	1 (6%)
4	BMA	A	906	4	11,11,12	0.40	0	14,15,17	0.91	0
4	MAN	A	907	4	11,11,12	0.55	0	14,15,17	2.11	3 (21%)
4	MAN	A	908	4	11,11,12	0.56	0	14,15,17	0.68	0
3	NAG	B	902	1,3	14,14,15	0.53	0	15,19,21	0.88	0
3	NAG	B	903	3	14,14,15	0.50	0	15,19,21	1.45	2 (13%)
7	NAG	B	904	1,7	14,14,15	0.48	0	15,19,21	0.99	1 (6%)
7	NAG	B	905	7	14,14,15	0.54	0	15,19,21	1.13	1 (6%)
7	BMA	B	906	7	11,11,12	0.63	0	14,15,17	1.52	1 (7%)
7	MAN	B	907	7	11,11,12	0.65	0	14,15,17	0.99	1 (7%)
7	MAN	B	908	7	11,11,12	0.57	0	14,15,17	1.10	1 (7%)
7	MAN	B	909	7	11,11,12	0.48	0	14,15,17	1.43	1 (7%)
7	MAN	B	910	7	11,11,12	0.56	0	14,15,17	0.76	1 (7%)
7	MAN	B	911	7	11,11,12	0.54	0	14,15,17	0.77	0
7	MAN	B	912	7	11,11,12	0.73	0	14,15,17	1.57	3 (21%)

In the following table, the Chirals column lists the number of chiral outliers, the number of chiral centers analysed, the number of these observed in the model and the number defined in the chemical component dictionary. Similar counts are reported in the Torsion and Rings columns. '-' means no outliers of that kind were identified.

Mol	Type	Chain	Res	Link	Chirals	Torsions	Rings
3	NAG	A	902	1,3	-	0/6/23/26	0/1/1/1
3	NAG	A	903	3	-	0/6/23/26	0/1/1/1
4	NAG	A	904	1,4	-	0/6/23/26	0/1/1/1
4	NAG	A	905	4	-	0/6/23/26	0/1/1/1
4	BMA	A	906	4	-	0/2/19/22	0/1/1/1
4	MAN	A	907	4	-	0/2/19/22	0/1/1/1
4	MAN	A	908	4	-	0/2/19/22	0/1/1/1
3	NAG	B	902	1,3	-	0/6/23/26	0/1/1/1
3	NAG	B	903	3	-	0/6/23/26	0/1/1/1
7	NAG	B	904	1,7	-	0/6/23/26	0/1/1/1
7	NAG	B	905	7	-	0/6/23/26	0/1/1/1
7	BMA	B	906	7	-	0/2/19/22	0/1/1/1
7	MAN	B	907	7	-	0/2/19/22	0/1/1/1
7	MAN	B	908	7	-	0/2/19/22	0/1/1/1
7	MAN	B	909	7	-	0/2/19/22	0/1/1/1
7	MAN	B	910	7	-	0/2/19/22	0/1/1/1
7	MAN	B	911	7	-	0/2/19/22	0/1/1/1
7	MAN	B	912	7	-	0/2/19/22	0/1/1/1

There are no bond length outliers.

The worst 5 of 18 bond angle outliers are listed below:

Mol	Chain	Res	Type	Atoms	Z	Observed(°)	Ideal(°)
7	B	910	MAN	C1-O5-C5	2.14	114.97	112.25
7	B	907	MAN	C1-C2-C3	2.18	112.12	109.54
7	B	904	NAG	O5-C5-C6	2.27	112.25	107.35
4	A	907	MAN	O5-C1-C2	2.32	114.62	110.86
3	A	903	NAG	C1-O5-C5	2.63	115.58	112.25

There are no chirality outliers.

There are no torsion outliers.

There are no ring outliers.

5 monomers are involved in 5 short contacts:

Mol	Chain	Res	Type	Clashes	Symm-Clashes
4	A	906	BMA	2	0
4	A	907	MAN	2	0
3	B	902	NAG	1	0
7	B	906	BMA	1	0
7	B	909	MAN	1	0

5.6 Ligand geometry

10 ligands are modelled in this entry.

In the following table, the Counts columns list the number of bonds (or angles) for which Mogul statistics could be retrieved, the number of bonds (or angles) that are observed in the model and the number of bonds (or angles) that are defined in the chemical component dictionary. The Link column lists molecule types, if any, to which the group is linked. The Z score for a bond length (or angle) is the number of standard deviations the observed value is removed from the expected value. A bond length (or angle) with $|Z| > 2$ is considered an outlier worth inspection. RMSZ is the root-mean-square of all Z scores of the bond lengths (or angles).

Mol	Type	Chain	Res	Link	Bond lengths			Bond angles		
					Counts	RMSZ	$\# Z > 2$	Counts	RMSZ	$\# Z > 2$
2	NAG	A	901	1	14,14,15	0.53	0	15,19,21	1.22	1 (6%)
5	GOL	A	909	-	5,5,5	0.19	0	5,5,5	0.12	0
6	IDJ	A	910	-	7,12,12	1.03	0	7,17,17	2.90	2 (28%)
2	NAG	B	901	1	14,14,15	0.45	0	15,19,21	0.89	1 (6%)
5	GOL	B	913	-	5,5,5	0.31	0	5,5,5	0.25	0
5	GOL	B	914	-	5,5,5	0.29	0	5,5,5	0.22	0
5	GOL	B	915	-	5,5,5	0.28	0	5,5,5	0.33	0
5	GOL	B	916	-	5,5,5	0.30	0	5,5,5	0.64	0
8	TLA	B	917	-	3,9,9	0.57	0	6,12,12	1.05	0
6	IDJ	B	918	-	7,12,12	1.04	0	7,17,17	2.48	2 (28%)

In the following table, the Chirals column lists the number of chiral outliers, the number of chiral centers analysed, the number of these observed in the model and the number defined in the chemical component dictionary. Similar counts are reported in the Torsion and Rings columns. '-' means no outliers of that kind were identified.

Mol	Type	Chain	Res	Link	Chirals	Torsions	Rings
2	NAG	A	901	1	-	0/6/23/26	0/1/1/1
5	GOL	A	909	-	-	0/4/4/4	0/0/0/0
6	IDJ	A	910	-	-	0/0/21/21	0/1/1/1
2	NAG	B	901	1	-	0/6/23/26	0/1/1/1
5	GOL	B	913	-	-	0/4/4/4	0/0/0/0
5	GOL	B	914	-	-	0/4/4/4	0/0/0/0
5	GOL	B	915	-	-	0/4/4/4	0/0/0/0
5	GOL	B	916	-	-	0/4/4/4	0/0/0/0
8	TLA	B	917	-	-	0/4/12/12	0/0/0/0
6	IDJ	B	918	-	-	0/0/21/21	0/1/1/1

There are no bond length outliers.

The worst 5 of 6 bond angle outliers are listed below:

Mol	Chain	Res	Type	Atoms	Z	Observed($^{\circ}$)	Ideal($^{\circ}$)
2	B	901	NAG	C1-O5-C5	2.49	115.41	112.25
2	A	901	NAG	C1-O5-C5	3.37	116.53	112.25
6	B	918	IDJ	C2-C3-C4	3.58	117.11	111.04
6	A	910	IDJ	C2-C3-C4	4.80	119.19	111.04
6	B	918	IDJ	C1-C2-C3	5.23	116.28	110.29

There are no chirality outliers.

There are no torsion outliers.

There are no ring outliers.

2 monomers are involved in 5 short contacts:

Mol	Chain	Res	Type	Clashes	Symm-Clashes
5	A	909	GOL	3	0
5	B	914	GOL	2	0

5.7 Other polymers [i](#)

There are no such residues in this entry.

5.8 Polymer linkage issues [i](#)

There are no chain breaks in this entry.

6 Fit of model and data [i](#)

6.1 Protein, DNA and RNA chains [i](#)

In the following table, the column labelled ‘#RSRZ> 2’ contains the number (and percentage) of RSRZ outliers, followed by percent RSRZ outliers for the chain as percentile scores relative to all X-ray entries and entries of similar resolution. The OWAB column contains the minimum, median, 95th percentile and maximum values of the occupancy-weighted average B-factor per residue. The column labelled ‘Q< 0.9’ lists the number of (and percentage) of residues with an average occupancy less than 0.9.

Mol	Chain	Analysed	<RSRZ>	#RSRZ>2	OWAB(Å ²)	Q<0.9
1	A	595/627 (94%)	0.10	24 (4%) 42 41	34, 52, 81, 105	0
1	B	612/627 (97%)	-0.10	9 (1%) 76 76	33, 47, 76, 112	0
All	All	1207/1254 (96%)	-0.00	33 (2%) 58 58	33, 49, 79, 112	0

The worst 5 of 33 RSRZ outliers are listed below:

Mol	Chain	Res	Type	RSRZ
1	A	339	SER	5.3
1	B	338	THR	3.9
1	B	588	ASP	3.7
1	B	641	VAL	3.4
1	A	338	THR	3.3

6.2 Non-standard residues in protein, DNA, RNA chains [i](#)

There are no non-standard protein/DNA/RNA residues in this entry.

6.3 Carbohydrates [i](#)

In the following table, the Atoms column lists the number of modelled atoms in the group and the number defined in the chemical component dictionary. LLDF column lists the quality of electron density of the group with respect to its neighbouring residues in protein, DNA or RNA chains. The B-factors column lists the minimum, median, 95th percentile and maximum values of B factors of atoms in the group. The column labelled ‘Q< 0.9’ lists the number of atoms with occupancy less than 0.9.

Mol	Type	Chain	Res	Atoms	RSCC	RSR	LLDF	B-factors(Å ²)	Q<0.9
7	NAG	B	904	14/15	0.96	0.17	0.64	40,41,44,45	0
7	NAG	B	905	14/15	0.96	0.16	-0.19	42,43,49,49	0
7	MAN	B	909	11/12	0.84	0.17	-0.23	92,99,103,105	0

Continued on next page...

Continued from previous page...

Mol	Type	Chain	Res	Atoms	RSCC	RSR	LLDF	B-factors(\AA^2)	Q<0.9
7	BMA	B	906	11/12	0.95	0.12	-	50,53,61,61	0
4	NAG	A	904	14/15	0.96	0.14	-	56,58,61,63	0
7	MAN	B	911	11/12	0.94	0.12	-	70,73,76,83	0
4	MAN	A	907	11/12	0.79	0.21	-	75,82,85,91	0
3	NAG	A	903	14/15	0.84	0.32	-	94,102,109,115	0
7	MAN	B	907	11/12	0.94	0.13	-	69,76,84,90	0
7	MAN	B	910	11/12	0.86	0.17	-	85,93,100,101	0
3	NAG	B	902	14/15	0.94	0.21	-	53,59,64,71	0
7	MAN	B	912	11/12	0.75	0.21	-	78,89,91,92	0
4	MAN	A	908	11/12	0.80	0.29	-	98,102,105,107	0
3	NAG	B	903	14/15	0.84	0.35	-	75,77,80,81	0
4	NAG	A	905	14/15	0.96	0.13	-	53,61,68,74	0
3	NAG	A	902	14/15	0.94	0.19	-	56,64,70,83	0
7	MAN	B	908	11/12	0.81	0.19	-	80,89,92,95	0
4	BMA	A	906	11/12	0.93	0.12	-	74,78,83,93	0

6.4 Ligands [i](#)

In the following table, the Atoms column lists the number of modelled atoms in the group and the number defined in the chemical component dictionary. LLDF column lists the quality of electron density of the group with respect to its neighbouring residues in protein, DNA or RNA chains. The B-factors column lists the minimum, median, 95th percentile and maximum values of B factors of atoms in the group. The column labelled 'Q< 0.9' lists the number of atoms with occupancy less than 0.9.

Mol	Type	Chain	Res	Atoms	RSCC	RSR	LLDF	B-factors(\AA^2)	Q<0.9
5	GOL	B	913	6/6	0.88	0.28	7.01	55,62,64,65	0
6	IDJ	A	910	12/12	0.86	0.22	4.80	82,86,88,89	0
5	GOL	B	914	6/6	0.92	0.19	1.41	51,57,57,58	0
5	GOL	A	909	6/6	0.92	0.17	1.23	50,52,54,56	0
5	GOL	B	916	6/6	0.89	0.21	1.03	41,45,47,51	0
8	TLA	B	917	10/10	0.91	0.23	0.62	63,66,70,71	0
5	GOL	B	915	6/6	0.94	0.19	0.38	51,52,53,54	0
6	IDJ	B	918	12/12	0.92	0.16	0.06	69,73,75,77	0
2	NAG	A	901	14/15	0.78	0.25	-	87,95,99,99	0
2	NAG	B	901	14/15	0.93	0.19	-	55,58,61,62	0

6.5 Other polymers [i](#)

There are no such residues in this entry.