



# Full wwPDB X-ray Structure Validation Report ⓘ

Feb 1, 2016 – 06:07 PM GMT

PDB ID : 4KN3  
Title : Structure of the Y34NS91G double mutant of Dehaloperoxidase from Amphitrite ornata with 2,4,6-trichlorophenol  
Authors : Wang, C.; Lovelace, L.; Lebioda, L.  
Deposited on : 2013-05-08  
Resolution : 1.78 Å(reported)

This is a Full wwPDB X-ray Structure Validation Report for a publicly released PDB entry.  
We welcome your comments at [validation@mail.wwpdb.org](mailto:validation@mail.wwpdb.org)  
A user guide is available at  
<http://wwpdb.org/validation/2016/XrayValidationReportHelp>  
with specific help available everywhere you see the ⓘ symbol.

---

The following versions of software and data (see [references ⓘ](#)) were used in the production of this report:

MolProbity : 4.02b-467  
Mogul : 1.7 (RC4), CSD as536be (2015)  
Xtriage (Phenix) : 1.9-1692  
EDS : rb-20026688  
Percentile statistics : 20151230.v01 (using entries in the PDB archive December 30th 2015)  
Refmac : 5.8.0135  
CCP4 : 6.5.0  
Ideal geometry (proteins) : Engh & Huber (2001)  
Ideal geometry (DNA, RNA) : Parkinson et al. (1996)  
Validation Pipeline (wwPDB-VP) : trunk26865

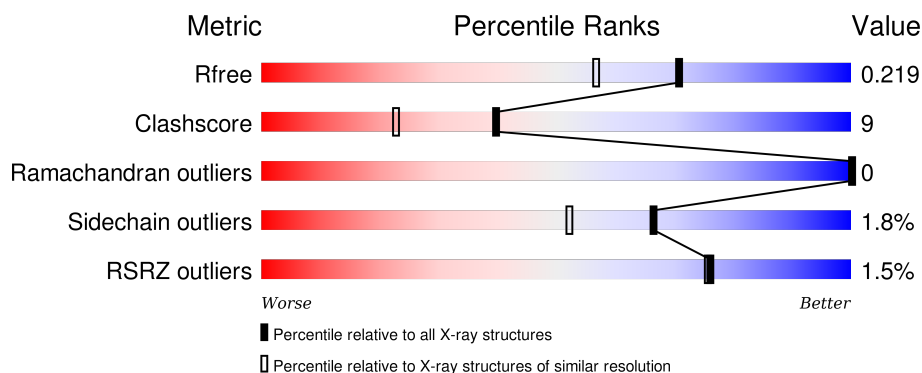
# 1 Overall quality at a glance

The following experimental techniques were used to determine the structure:

## *X-RAY DIFFRACTION*

The reported resolution of this entry is 1.78 Å.

Percentile scores (ranging between 0-100) for global validation metrics of the entry are shown in the following graphic. The table shows the number of entries on which the scores are based.



Metric	Whole archive (#Entries)	Similar resolution (#Entries, resolution range(Å))
$R_{free}$	91344	6655 (1.80-1.76)
Clashscore	102246	7658 (1.80-1.76)
Ramachandran outliers	100387	7570 (1.80-1.76)
Sidechain outliers	100360	7569 (1.80-1.76)
RSRZ outliers	91569	6671 (1.80-1.76)

The table below summarises the geometric issues observed across the polymeric chains and their fit to the electron density. The red, orange, yellow and green segments on the lower bar indicate the fraction of residues that contain outliers for  $\geq 3$ , 2, 1 and 0 types of geometric quality criteria. A grey segment represents the fraction of residues that are not modelled. The numeric value for each fraction is indicated below the corresponding segment, with a dot representing fractions  $\leq 5\%$ . The upper red bar (where present) indicates the fraction of residues that have poor fit to the electron density. The numeric value is given above the bar.

Mol	Chain	Length	Quality of chain
1	A	137	
1	B	137	

The following table lists non-polymeric compounds, carbohydrate monomers and non-standard residues in protein, DNA, RNA chains that are outliers for geometric or electron-density-fit criteria:

Mol	Type	Chain	Res	Chirality	Geometry	Clashes	Electron density
3	T6C	A	202	-	-	X	X
3	T6C	A	203	-	-	X	X
3	T6C	B	202	-	-	-	X

## 2 Entry composition [i](#)

There are 5 unique types of molecules in this entry. The entry contains 2579 atoms, of which 0 are hydrogens and 0 are deuteriums.

In the tables below, the ZeroOcc column contains the number of atoms modelled with zero occupancy, the AltConf column contains the number of residues with at least one atom in alternate conformation and the Trace column contains the number of residues modelled with at most 2 atoms.

- Molecule 1 is a protein called Dehaloperoxidase A.

Mol	Chain	Residues	Atoms					ZeroOcc	AltConf	Trace
1	A	137	Total	C	N	O	S	0	1	0
			1079	678	186	208	7			
1	B	137	Total	C	N	O	S	0	0	0
			1066	672	182	205	7			

There are 4 discrepancies between the modelled and reference sequences:

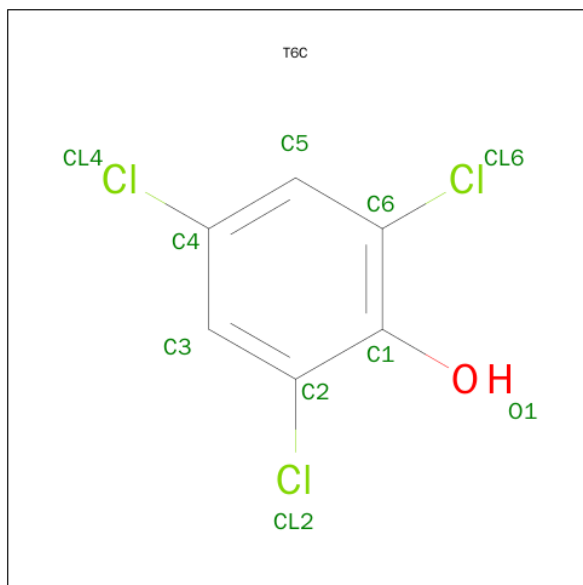
Chain	Residue	Modelled	Actual	Comment	Reference
A	34	ASN	TYR	ENGINEERED MUTATION	UNP Q9NAV8
A	91	GLY	SER	ENGINEERED MUTATION	UNP Q9NAV8
B	34	ASN	TYR	ENGINEERED MUTATION	UNP Q9NAV8
B	91	GLY	SER	ENGINEERED MUTATION	UNP Q9NAV8

- Molecule 2 is PROTOPORPHYRIN IX CONTAINING FE (three-letter code: HEM) (formula:  $C_{34}H_{32}FeN_4O_4$ ).



Mol	Chain	Residues	Atoms				ZeroOcc	AltConf
2	A	1	Total	C	Fe	N	O	
			43	34	1	4	4	
2	B	1	Total	C	Fe	N	O	
			43	34	1	4	4	

- Molecule 3 is 2,4,6-TRICHLOROPHENOL (three-letter code: T6C) (formula:  $C_6H_3Cl_3O$ ).



Mol	Chain	Residues	Atoms				ZeroOcc	AltConf
3	A	1	Total	C	Cl	O		
			10	6	3	1		
3	A	1	Total	C	Cl	O		
			10	6	3	1		
3	B	1	Total	C	Cl	O		
			10	6	3	1		

- Molecule 4 is SULFATE ION (three-letter code: SO4) (formula:  $O_4S$ ).



Mol	Chain	Residues	Atoms			ZeroOcc	AltConf
4	B	1	Total	O	S	0	0
			5	4	1		
4	B	1	Total	O	S	0	0
			5	4	1		

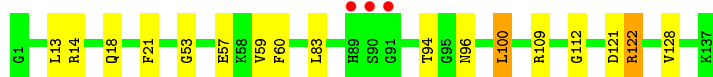
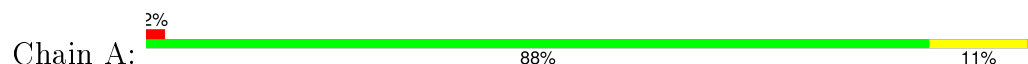
- Molecule 5 is water.

Mol	Chain	Residues	Atoms		ZeroOcc	AltConf
5	A	178	Total	O	0	0
			178	178		
5	B	130	Total	O	0	0
			130	130		

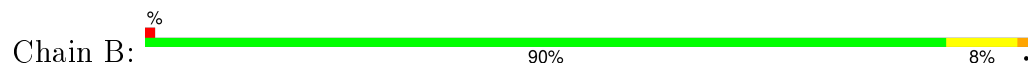
### 3 Residue-property plots [i](#)

These plots are drawn for all protein, RNA and DNA chains in the entry. The first graphic for a chain summarises the proportions of errors displayed in the second graphic. The second graphic shows the sequence view annotated by issues in geometry and electron density. Residues are color-coded according to the number of geometric quality criteria for which they contain at least one outlier: green = 0, yellow = 1, orange = 2 and red = 3 or more. A red dot above a residue indicates a poor fit to the electron density ( $\text{RSRZ} > 2$ ). Stretches of 2 or more consecutive residues without any outlier are shown as a green connector. Residues present in the sample, but not in the model, are shown in grey.

- Molecule 1: Dehaloperoxidase A



- Molecule 1: Dehaloperoxidase A



## 4 Data and refinement statistics

Property	Value	Source
Space group	P 21 21 21	Depositor
Cell constants a, b, c, $\alpha$ , $\beta$ , $\gamma$	58.98Å 67.66Å 67.87Å 90.00° 90.00° 90.00°	Depositor
Resolution (Å)	44.52 – 1.78 37.19 – 1.78	Depositor EDS
% Data completeness (in resolution range)	98.7 (44.52-1.78) 98.7 (37.19-1.78)	Depositor EDS
$R_{merge}$	0.04	Depositor
$R_{sym}$	(Not available)	Depositor
$\langle I/\sigma(I) \rangle$ <sup>1</sup>	7.05 (at 1.78Å)	Xtriage
Refinement program	REFMAC 5.7.0032	Depositor
R, $R_{free}$	0.133 , 0.214 0.145 , 0.219	Depositor DCC
$R_{free}$ test set	1327 reflections (5.35%)	DCC
Wilson B-factor (Å <sup>2</sup> )	20.8	Xtriage
Anisotropy	0.006	Xtriage
Bulk solvent $k_{sol}$ (e/Å <sup>3</sup> ), $B_{sol}$ (Å <sup>2</sup> )	0.35 , 44.4	EDS
Estimated twinning fraction	0.020 for -h,l,k	Xtriage
L-test for twinning <sup>2</sup>	$\langle  L  \rangle = 0.49$ , $\langle L^2 \rangle = 0.32$	Xtriage
Outliers	0 of 26147 reflections	Xtriage
$F_o, F_c$ correlation	0.97	EDS
Total number of atoms	2579	wwPDB-VP
Average B, all atoms (Å <sup>2</sup> )	26.0	wwPDB-VP

Xtriage's analysis on translational NCS is as follows: *The largest off-origin peak in the Patterson function is 7.39% of the height of the origin peak. No significant pseudotranslation is detected.*

<sup>1</sup>Intensities estimated from amplitudes.

<sup>2</sup>Theoretical values of  $\langle |L| \rangle$ ,  $\langle L^2 \rangle$  for acentric reflections are 0.5, 0.375 respectively for untwinned datasets, and 0.333, 0.2 for perfectly twinned datasets.



## 5 Model quality

### 5.1 Standard geometry

Bond lengths and bond angles in the following residue types are not validated in this section: HEM, SO4, T6C

The Z score for a bond length (or angle) is the number of standard deviations the observed value is removed from the expected value. A bond length (or angle) with  $|Z| > 5$  is considered an outlier worth inspection. RMSZ is the root-mean-square of all Z scores of the bond lengths (or angles).

Mol	Chain	Bond lengths		Bond angles	
		RMSZ	$\# Z  > 5$	RMSZ	$\# Z  > 5$
1	A	0.73	0/1098	0.90	4/1473 (0.3%)
1	B	0.74	0/1085	0.89	5/1456 (0.3%)
All	All	0.73	0/2183	0.90	9/2929 (0.3%)

Chiral center outliers are detected by calculating the chiral volume of a chiral center and verifying if the center is modelled as a planar moiety or with the opposite hand. A planarity outlier is detected by checking planarity of atoms in a peptide group, atoms in a mainchain group or atoms of a sidechain that are expected to be planar.

Mol	Chain	#Chirality outliers	#Planarity outliers
1	A	0	1
1	B	0	1
All	All	0	2

There are no bond length outliers.

All (9) bond angle outliers are listed below:

Mol	Chain	Res	Type	Atoms	Z	Observed(°)	Ideal(°)
1	B	122	ARG	NE-CZ-NH2	-8.32	116.14	120.30
1	A	122	ARG	NE-CZ-NH2	-7.15	116.72	120.30
1	A	121	ASP	CB-CG-OD1	6.66	124.29	118.30
1	B	68	ASP	CB-CG-OD2	-5.92	112.97	118.30
1	A	14	ARG	NE-CZ-NH2	-5.41	117.59	120.30
1	B	14	ARG	NE-CZ-NH1	5.35	122.97	120.30
1	B	122	ARG	NE-CZ-NH1	5.35	122.97	120.30
1	A	109	ARG	NE-CZ-NH2	-5.10	117.75	120.30
1	B	121	ASP	CB-CG-OD1	5.06	122.86	118.30

There are no chirality outliers.

All (2) planarity outliers are listed below:

Mol	Chain	Res	Type	Group
1	A	112	GLY	Peptide
1	B	112	GLY	Peptide

## 5.2 Too-close contacts ⓘ

In the following table, the Non-H and H(model) columns list the number of non-hydrogen atoms and hydrogen atoms in the chain respectively. The H(added) column lists the number of hydrogen atoms added and optimized by MolProbity. The Clashes column lists the number of clashes within the asymmetric unit, whereas Symm-Clashes lists symmetry related clashes.

Mol	Chain	Non-H	H(model)	H(added)	Clashes	Symm-Clashes
1	A	1079	0	1045	17	1
1	B	1066	0	1026	8	1
2	A	43	0	30	13	0
2	B	43	0	30	5	0
3	A	20	0	5	16	0
3	B	10	0	3	1	0
4	B	10	0	0	0	0
5	A	178	0	0	1	0
5	B	130	0	0	5	0
All	All	2579	0	2139	39	1

The all-atom clashscore is defined as the number of clashes found per 1000 atoms (including hydrogen atoms). The all-atom clashscore for this structure is 9.

All (39) close contacts within the same asymmetric unit are listed below, sorted by their clash magnitude.

Atom-1	Atom-2	Interatomic distance (Å)	Clash overlap (Å)
2:A:201:HEM:HAD2	3:A:202:T6C:CL2	1.97	1.02
1:B:36:LYS:CA	5:B:388:HOH:O	2.18	0.90
2:A:201:HEM:CAD	3:A:202:T6C:CL2	2.62	0.83
2:A:201:HEM:C4D	3:A:202:T6C:H2	2.21	0.76
1:A:100:LEU:HG	3:A:203:T6C:CL4	2.29	0.70
1:A:60:PHE:HE2	3:A:203:T6C:H3	1.57	0.68
1:A:100:LEU:HD12	3:A:203:T6C:C3	2.28	0.63
1:A:21:PHE:CD1	3:A:203:T6C:C6	2.83	0.62
2:A:201:HEM:CBD	3:A:202:T6C:CL2	2.85	0.61
1:B:14:ARG:NH1	1:B:57:GLU:OE2	2.38	0.56
1:B:55:HIS:CD2	2:B:201:HEM:O2A	2.59	0.56
1:A:122:ARG:HD3	5:A:468:HOH:O	2.06	0.55
2:A:201:HEM:C3D	3:A:202:T6C:H2	2.42	0.55

*Continued on next page...*

Continued from previous page...

Atom-1	Atom-2	Interatomic distance (Å)	Clash overlap (Å)
1:A:21:PHE:CD1	3:A:203:T6C:C1	2.90	0.54
1:A:60:PHE:HE2	3:A:203:T6C:C5	2.20	0.54
2:A:201:HEM:HBD1	3:A:202:T6C:CL2	2.46	0.53
1:A:100:LEU:HD23	1:A:100:LEU:C	2.29	0.52
1:A:60:PHE:CE2	3:A:203:T6C:H3	2.41	0.50
2:B:201:HEM:HHA	2:B:201:HEM:HBD2	1.93	0.50
1:B:37:ASN:CB	5:B:390:HOH:O	2.58	0.50
2:B:201:HEM:C1D	3:B:202:T6C:H2	2.48	0.48
1:A:94:THR:HB	1:A:128:VAL:HG13	1.97	0.47
1:A:59:VAL:HG22	2:A:201:HEM:C4A	2.50	0.46
2:A:201:HEM:HBC2	2:A:201:HEM:HMC1	1.98	0.46
1:A:59:VAL:HG21	3:A:202:T6C:CL4	2.53	0.45
2:B:201:HEM:HMC1	2:B:201:HEM:HBC2	1.98	0.45
1:A:18:GLN:HE21	1:A:53:GLY:HA2	1.82	0.45
1:B:3:LYS:HE2	5:B:311:HOH:O	2.17	0.45
1:A:96:ASN:HB3	2:A:201:HEM:CBC	2.47	0.44
2:B:201:HEM:CMC	2:B:201:HEM:HBC2	2.47	0.44
1:A:83:LEU:HD21	2:A:201:HEM:HMB3	2.00	0.44
1:A:21:PHE:CD1	3:A:203:T6C:C5	3.01	0.43
1:B:93:THR:OG1	5:B:387:HOH:O	2.21	0.43
2:A:201:HEM:HHA	2:A:201:HEM:HBD1	2.02	0.42
1:B:94:THR:HB	1:B:128:VAL:HG13	2.01	0.42
1:A:21:PHE:CE1	3:A:203:T6C:C1	3.03	0.41
1:B:122:ARG:NH1	5:B:428:HOH:O	2.54	0.41
2:A:201:HEM:HBC2	2:A:201:HEM:CMC	2.51	0.40
2:A:201:HEM:HHA	2:A:201:HEM:CBD	2.51	0.40

All (1) symmetry-related close contacts are listed below. The label for Atom-2 includes the symmetry operator and encoded unit-cell translations to be applied.

Atom-1	Atom-2	Interatomic distance (Å)	Clash overlap (Å)
1:A:57:GLU:OE2	1:B:57:GLU:OE1[4_555]	2.18	0.02

## 5.3 Torsion angles [i](#)

### 5.3.1 Protein backbone [i](#)

In the following table, the Percentiles column shows the percent Ramachandran outliers of the chain as a percentile score with respect to all X-ray entries followed by that with respect to entries of similar resolution.

The Analysed column shows the number of residues for which the backbone conformation was analysed, and the total number of residues.

Mol	Chain	Analysed	Favoured	Allowed	Outliers	Percentiles	
1	A	135/137 (98%)	133 (98%)	2 (2%)	0	100	100
1	B	135/137 (98%)	133 (98%)	2 (2%)	0	100	100
All	All	270/274 (98%)	266 (98%)	4 (2%)	0	100	100

There are no Ramachandran outliers to report.

### 5.3.2 Protein sidechains ⓘ

In the following table, the Percentiles column shows the percent sidechain outliers of the chain as a percentile score with respect to all X-ray entries followed by that with respect to entries of similar resolution.

The Analysed column shows the number of residues for which the sidechain conformation was analysed, and the total number of residues.

Mol	Chain	Analysed	Rotameric	Outliers	Percentiles	
1	A	114/116 (98%)	112 (98%)	2 (2%)	66	52
1	B	110/116 (95%)	108 (98%)	2 (2%)	66	52
All	All	224/232 (97%)	220 (98%)	4 (2%)	66	52

All (4) residues with a non-rotameric sidechain are listed below:

Mol	Chain	Res	Type
1	A	13	LEU
1	A	100	LEU
1	B	48	SER
1	B	93	THR

Some sidechains can be flipped to improve hydrogen bonding and reduce clashes. All (5) such sidechains are listed below:

Mol	Chain	Res	Type
1	A	18	GLN
1	A	113	GLN
1	A	118	GLN
1	B	85	GLN
1	B	113	GLN

### 5.3.3 RNA ⓘ

There are no RNA molecules in this entry.

## 5.4 Non-standard residues in protein, DNA, RNA chains ⓘ

There are no non-standard protein/DNA/RNA residues in this entry.

## 5.5 Carbohydrates ⓘ

There are no carbohydrates in this entry.

## 5.6 Ligand geometry ⓘ

7 ligands are modelled in this entry.

In the following table, the Counts columns list the number of bonds (or angles) for which Mogul statistics could be retrieved, the number of bonds (or angles) that are observed in the model and the number of bonds (or angles) that are defined in the chemical component dictionary. The Link column lists molecule types, if any, to which the group is linked. The Z score for a bond length (or angle) is the number of standard deviations the observed value is removed from the expected value. A bond length (or angle) with  $|Z| > 2$  is considered an outlier worth inspection. RMSZ is the root-mean-square of all Z scores of the bond lengths (or angles).

Mol	Type	Chain	Res	Link	Bond lengths			Bond angles		
					Counts	RMSZ	# $ Z  > 2$	Counts	RMSZ	# $ Z  > 2$
2	HEM	A	201	1	30,50,50	1.98	6 (20%)	24,82,82	2.43	9 (37%)
3	T6C	A	202	-	10,10,10	1.56	2 (20%)	13,14,14	2.18	5 (38%)
3	T6C	A	203	-	10,10,10	1.80	1 (10%)	13,14,14	2.11	6 (46%)
2	HEM	B	201	1	30,50,50	2.00	7 (23%)	24,82,82	2.53	9 (37%)
3	T6C	B	202	-	10,10,10	1.61	3 (30%)	13,14,14	1.65	4 (30%)
4	SO4	B	203	-	4,4,4	0.59	0	6,6,6	0.37	0
4	SO4	B	204	-	4,4,4	0.72	0	6,6,6	0.33	0

In the following table, the Chirals column lists the number of chiral outliers, the number of chiral centers analysed, the number of these observed in the model and the number defined in the chemical component dictionary. Similar counts are reported in the Torsion and Rings columns. '-' means no outliers of that kind were identified.

Mol	Type	Chain	Res	Link	Chirals	Torsions	Rings
2	HEM	A	201	1	-	0/10/54/54	0/0/8/8
3	T6C	A	202	-	-	0/0/0/0	0/1/1/1

*Continued on next page...*

*Continued from previous page...*

Mol	Type	Chain	Res	Link	Chirals	Torsions	Rings
3	T6C	A	203	-	-	0/0/0/0	0/1/1/1
2	HEM	B	201	1	-	0/10/54/54	0/0/8/8
3	T6C	B	202	-	-	0/0/0/0	0/1/1/1
4	SO4	B	203	-	-	0/0/0/0	0/0/0/0
4	SO4	B	204	-	-	0/0/0/0	0/0/0/0

All (19) bond length outliers are listed below:

Mol	Chain	Res	Type	Atoms	Z	Observed(Å)	Ideal(Å)
2	A	201	HEM	C2D-C3D	-6.64	1.34	1.54
2	B	201	HEM	C2C-C1C	-6.31	1.40	1.52
2	B	201	HEM	C2D-C3D	-5.85	1.37	1.54
2	A	201	HEM	C2C-C1C	-5.60	1.41	1.52
2	B	201	HEM	C2B-C1B	-2.40	1.44	1.51
3	B	202	T6C	C1-C2	-2.20	1.35	1.39
3	B	202	T6C	C4-CL4	-2.14	1.69	1.74
2	B	201	HEM	C3B-C4B	-2.12	1.50	1.51
2	A	201	HEM	C2B-C1B	-2.07	1.45	1.51
3	A	202	T6C	C1-C2	-2.01	1.36	1.39
2	A	201	HEM	CHC-C1C	2.18	1.41	1.36
2	B	201	HEM	FE-NB	2.49	2.10	1.97
2	A	201	HEM	FE-NB	2.54	2.10	1.97
2	B	201	HEM	CHC-C1C	2.68	1.42	1.36
2	B	201	HEM	FE-NC	3.08	2.07	1.95
2	A	201	HEM	FE-NC	3.37	2.09	1.95
3	B	202	T6C	O1-C1	3.45	1.45	1.37
3	A	202	T6C	O1-C1	3.69	1.45	1.37
3	A	203	T6C	O1-C1	4.58	1.47	1.37

All (33) bond angle outliers are listed below:

Mol	Chain	Res	Type	Atoms	Z	Observed(°)	Ideal(°)
2	B	201	HEM	CBA-CAA-C2A	-5.20	103.20	112.53
3	A	203	T6C	C3-C2-CL2	-4.54	111.50	118.50
2	A	201	HEM	CBA-CAA-C2A	-3.71	105.88	112.53
3	A	202	T6C	C3-C4-CL4	-3.45	114.86	119.14
2	B	201	HEM	C1D-CHD-C4C	-3.14	120.57	125.82
3	B	202	T6C	C6-C5-C4	-3.13	115.21	118.69
2	A	201	HEM	CAA-CBA-CGA	-2.84	107.55	112.75
3	A	203	T6C	C5-C4-C3	-2.59	118.21	121.69
3	B	202	T6C	C3-C4-CL4	-2.29	116.30	119.14
2	B	201	HEM	CHD-C1D-ND	2.02	129.39	124.52

*Continued on next page...*

*Continued from previous page...*

Mol	Chain	Res	Type	Atoms	Z	Observed(°)	Ideal(°)
2	B	201	HEM	C2D-C3D-C4D	2.05	104.98	101.50
2	A	201	HEM	CAD-C3D-C2D	2.10	119.25	113.22
3	A	203	T6C	O1-C1-C2	2.16	124.74	119.55
2	A	201	HEM	CMD-C2D-C3D	2.23	124.23	114.35
3	A	202	T6C	C3-C2-CL2	2.26	121.99	118.50
2	A	201	HEM	C2C-C1C-CHC	2.30	127.17	123.68
2	A	201	HEM	C2D-C3D-C4D	2.37	105.51	101.50
3	B	202	T6C	C3-C2-CL2	2.43	122.25	118.50
3	A	203	T6C	C5-C4-CL4	2.50	122.24	119.14
3	A	203	T6C	C1-C2-CL2	2.52	122.50	118.76
3	B	202	T6C	O1-C1-C6	2.54	125.66	119.55
3	A	203	T6C	C3-C2-C1	2.62	125.94	121.75
3	A	202	T6C	C2-C3-C4	2.70	121.69	118.69
3	A	202	T6C	O1-C1-C6	2.88	126.47	119.55
2	B	201	HEM	CMD-C2D-C3D	3.22	128.57	114.35
2	A	201	HEM	CMC-C2C-C3C	3.77	125.95	116.53
2	B	201	HEM	CAD-C3D-C2D	3.85	124.28	113.22
2	B	201	HEM	CMB-C2B-C3B	4.24	127.11	116.53
3	A	202	T6C	C5-C4-CL4	4.36	124.56	119.14
2	A	201	HEM	CMB-C2B-C3B	4.52	127.81	116.53
2	B	201	HEM	CMC-C2C-C3C	4.61	128.05	116.53
2	B	201	HEM	CAD-C3D-C4D	5.18	130.74	112.47
2	A	201	HEM	CAD-C3D-C4D	6.46	135.24	112.47

There are no chirality outliers.

There are no torsion outliers.

There are no ring outliers.

5 monomers are involved in 28 short contacts:

Mol	Chain	Res	Type	Clashes	Symm-Clashes
2	A	201	HEM	13	0
3	A	202	T6C	7	0
3	A	203	T6C	9	0
2	B	201	HEM	5	0
3	B	202	T6C	1	0

## 5.7 Other polymers ⓘ

There are no such residues in this entry.

## 5.8 Polymer linkage issues ⓘ

There are no chain breaks in this entry.



## 6 Fit of model and data [i](#)

### 6.1 Protein, DNA and RNA chains [i](#)

In the following table, the column labelled ‘#RSRZ> 2’ contains the number (and percentage) of RSRZ outliers, followed by percent RSRZ outliers for the chain as percentile scores relative to all X-ray entries and entries of similar resolution. The OWAB column contains the minimum, median, 95<sup>th</sup> percentile and maximum values of the occupancy-weighted average B-factor per residue. The column labelled ‘Q< 0.9’ lists the number of (and percentage) of residues with an average occupancy less than 0.9.

Mol	Chain	Analysed	<RSRZ>	#RSRZ>2	OWAB(Å <sup>2</sup> )	Q<0.9
1	A	137/137 (100%)	-0.05	3 (2%) 65 64	14, 23, 48, 61	1 (0%)
1	B	137/137 (100%)	-0.12	1 (0%) 89 89	12, 22, 45, 63	0
All	All	274/274 (100%)	-0.08	4 (1%) 76 76	12, 23, 48, 63	1 (0%)

All (4) RSRZ outliers are listed below:

Mol	Chain	Res	Type	RSRZ
1	A	90	SER	3.6
1	A	89	HIS	2.3
1	A	91	GLY	2.2
1	B	91	GLY	2.1

### 6.2 Non-standard residues in protein, DNA, RNA chains [i](#)

There are no non-standard protein/DNA/RNA residues in this entry.

### 6.3 Carbohydrates [i](#)

There are no carbohydrates in this entry.

### 6.4 Ligands [i](#)

In the following table, the Atoms column lists the number of modelled atoms in the group and the number defined in the chemical component dictionary. LLDF column lists the quality of electron density of the group with respect to its neighbouring residues in protein, DNA or RNA chains. The B-factors column lists the minimum, median, 95<sup>th</sup> percentile and maximum values of B factors of atoms in the group. The column labelled ‘Q< 0.9’ lists the number of atoms with occupancy less than 0.9.

Mol	Type	Chain	Res	Atoms	RSCC	RSR	LLDF	B-factors( $\text{\AA}^2$ )	Q<0.9
3	T6C	A	203	10/10	0.97	0.27	12.24	15,21,22,22	10
3	T6C	A	202	10/10	0.90	0.17	5.22	17,20,25,30	10
3	T6C	B	202	10/10	0.95	0.16	3.76	26,35,41,42	0
2	HEM	A	201	43/43	0.96	0.18	1.41	24,33,67,88	0
2	HEM	B	201	43/43	0.95	0.14	1.39	19,31,66,82	0
4	SO4	B	203	5/5	1.00	0.06	-0.87	16,16,17,19	0
4	SO4	B	204	5/5	0.99	0.06	-1.42	19,25,28,29	0

## 6.5 Other polymers [i](#)

There are no such residues in this entry.