



Full wwPDB X-ray Structure Validation Report ⓘ

Feb 1, 2016 – 10:06 AM GMT

PDB ID : 3KVS
Title : The high resolution structure of C-Phycocyanin from Galdieria Sulphuraria
Authors : Fromme, R.; Thangaraj, B.; Vanselow, C.; Fromme, P.
Deposited on : 2009-11-30
Resolution : 1.50 Å(reported)

This is a Full wwPDB X-ray Structure Validation Report for a publicly released PDB entry.
We welcome your comments at validation@mail.wwpdb.org
A user guide is available at
<http://wwpdb.org/validation/2016/XrayValidationReportHelp>
with specific help available everywhere you see the ⓘ symbol.

The following versions of software and data (see [references ⓘ](#)) were used in the production of this report:

MolProbity : 4.02b-467
Mogul : 1.7 (RC4), CSD as536be (2015)
Xtriage (Phenix) : 1.9-1692
EDS : rb-20026688
Percentile statistics : 20151230.v01 (using entries in the PDB archive December 30th 2015)
Refmac : 5.8.0135
CCP4 : 6.5.0
Ideal geometry (proteins) : Engh & Huber (2001)
Ideal geometry (DNA, RNA) : Parkinson et al. (1996)
Validation Pipeline (wwPDB-VP) : trunk26865

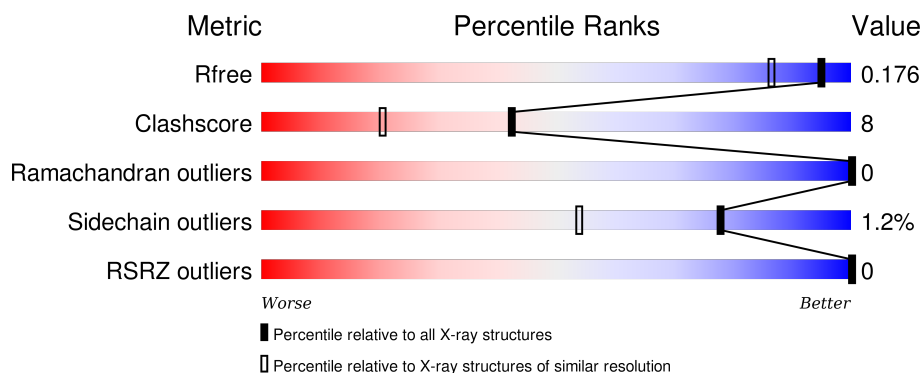
1 Overall quality at a glance

The following experimental techniques were used to determine the structure:

X-RAY DIFFRACTION



The reported resolution of this entry is 1.50 Å.

Percentile scores (ranging between 0-100) for global validation metrics of the entry are shown in the following graphic. The table shows the number of entries on which the scores are based.



Metric	Whole archive (#Entries)	Similar resolution (#Entries, resolution range(Å))
R_{free}	91344	2072 (1.50-1.50)
Clashscore	102246	2274 (1.50-1.50)
Ramachandran outliers	100387	2218 (1.50-1.50)
Sidechain outliers	100360	2216 (1.50-1.50)
RSRZ outliers	91569	2075 (1.50-1.50)

The table below summarises the geometric issues observed across the polymeric chains and their fit to the electron density. The red, orange, yellow and green segments on the lower bar indicate the fraction of residues that contain outliers for ≥ 3 , 2, 1 and 0 types of geometric quality criteria. A grey segment represents the fraction of residues that are not modelled. The numeric value for each fraction is indicated below the corresponding segment, with a dot representing fractions $\leq 5\%$. The upper red bar (where present) indicates the fraction of residues that have poor fit to the electron density. The numeric value is given above the bar.

Mol	Chain	Length	Quality of chain
1	A	162	 93% 6% ..
2	B	172	 90% 9% .

The following table lists non-polymeric compounds, carbohydrate monomers and non-standard residues in protein, DNA, RNA chains that are outliers for geometric or electron-density-fit criteria:

Mol	Type	Chain	Res	Chirality	Geometry	Clashes	Electron density
3	BLA	A	484	-	-	-	X

2 Entry composition

There are 4 unique types of molecules in this entry. The entry contains 3378 atoms, of which 137 are hydrogens and 0 are deuteriums.

In the tables below, the ZeroOcc column contains the number of atoms modelled with zero occupancy, the AltConf column contains the number of residues with at least one atom in alternate conformation and the Trace column contains the number of residues modelled with at most 2 atoms.

- Molecule 1 is a protein called C-phycocyanin alpha chain.

Mol	Chain	Residues	Atoms						ZeroOcc	AltConf	Trace
1	A	161	Total	C	H	N	O	S	0	13	0
			1354	787	93	218	251	5			

There are 3 discrepancies between the modelled and reference sequences:

Chain	Residue	Modelled	Actual	Comment	Reference
A	49	GLN	GLU	SEE REMARK 999	UNP P00306
A	136	VAL	ILE	SEE REMARK 999	UNP P00306
A	138	SER	ALA	SEE REMARK 999	UNP P00306

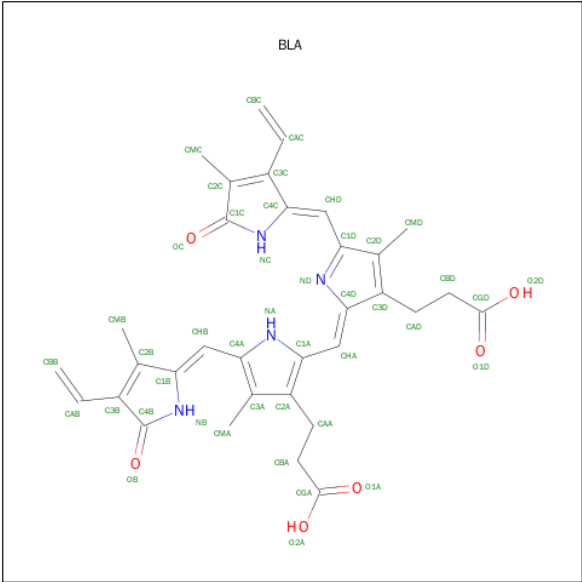
- Molecule 2 is a protein called C-phycocyanin beta chain.

Mol	Chain	Residues	Atoms						ZeroOcc	AltConf	Trace
2	B	170	Total	C	H	N	O	S	0	11	0
			1335	795	44	228	260	8			

There are 2 discrepancies between the modelled and reference sequences:

Chain	Residue	Modelled	Actual	Comment	Reference
B	104	VAL	ILE	SEE REMARK 999	UNP P00311
B	131	VAL	ILE	SEE REMARK 999	UNP P00311

- Molecule 3 is BILIVERDINE IX ALPHA (three-letter code: BLA) (formula: C₃₃H₃₄N₄O₆).



Mol	Chain	Residues	Atoms				ZeroOcc	AltConf
3	A	1	Total	C	N	O	0	0
			43	33	4	6		
3	B	1	Total	C	N	O	0	0
			43	33	4	6		
3	B	1	Total	C	N	O	0	0
			43	33	4	6		

- Molecule 4 is water.

Mol	Chain	Residues	Atoms		ZeroOcc	AltConf
4	A	279	Total	O	0	0
			279	279		
4	B	281	Total	O	0	0
			281	281		

3 Residue-property plots [i](#)


These plots are drawn for all protein, RNA and DNA chains in the entry. The first graphic for a chain summarises the proportions of errors displayed in the second graphic. The second graphic shows the sequence view annotated by issues in geometry and electron density. Residues are color-coded according to the number of geometric quality criteria for which they contain at least one outlier: green = 0, yellow = 1, orange = 2 and red = 3 or more. A red dot above a residue indicates a poor fit to the electron density ($RSRZ > 2$). Stretches of 2 or more consecutive residues without any outlier are shown as a green connector. Residues present in the sample, but not in the model, are shown in grey.

- Molecule 1: C-phycoerythrin alpha chain

Chain A:  93% 6% ..



- Molecule 2: C-phycoerythrin beta chain

Chain B:  90% 9% .



4 Data and refinement statistics

Property	Value	Source
Space group	H 3 2	Depositor
Cell constants a, b, c, α , β , γ	105.30Å 105.30Å 174.02Å 90.00° 90.00° 120.00°	Depositor
Resolution (Å)	38.99 – 1.50 38.99 – 1.50	Depositor EDS
% Data completeness (in resolution range)	87.1 (38.99-1.50) 87.1 (38.99-1.50)	Depositor EDS
R_{merge}	0.07	Depositor
R_{sym}	(Not available)	Depositor
$\langle I/\sigma(I) \rangle$ ¹	3.62 (at 1.50Å)	Xtriage
Refinement program	PHENIX (phenix.refine)	Depositor
R, R_{free}	0.131 , 0.175 0.138 , 0.176	Depositor DCC
R_{free} test set	2633 reflections (5.35%)	DCC
Wilson B-factor (Å ²)	12.0	Xtriage
Anisotropy	0.278	Xtriage
Bulk solvent k_{sol} (e/Å ³), B_{sol} (Å ²)	0.34 , 57.8	EDS
Estimated twinning fraction	No twinning to report.	Xtriage
L-test for twinning ²	$\langle L \rangle = 0.50$, $\langle L^2 \rangle = 0.34$	Xtriage
Outliers	0 of 51816 reflections	Xtriage
F_o, F_c correlation	0.97	EDS
Total number of atoms	3378	wwPDB-VP
Average B, all atoms (Å ²)	16.0	wwPDB-VP

Xtriage's analysis on translational NCS is as follows: *The largest off-origin peak in the Patterson function is 7.91% of the height of the origin peak. No significant pseudotranslation is detected.*

¹Intensities estimated from amplitudes.

²Theoretical values of $\langle |L| \rangle$, $\langle L^2 \rangle$ for acentric reflections are 0.5, 0.375 respectively for untwinned datasets, and 0.333, 0.2 for perfectly twinned datasets.

5 Model quality [i](#)

5.1 Standard geometry [i](#)

Bond lengths and bond angles in the following residue types are not validated in this section: MEN, BLA

The Z score for a bond length (or angle) is the number of standard deviations the observed value is removed from the expected value. A bond length (or angle) with $|Z| > 5$ is considered an outlier worth inspection. RMSZ is the root-mean-square of all Z scores of the bond lengths (or angles).

Mol	Chain	Bond lengths		Bond angles	
		RMSZ	$\# Z > 5$	RMSZ	$\# Z > 5$
1	A	0.62	2/1355 (0.1%)	0.56	1/1839 (0.1%)
2	B	0.38	0/1334	0.49	0/1805
All	All	0.52	2/2689 (0.1%)	0.52	1/3644 (0.0%)

All (2) bond length outliers are listed below:

Mol	Chain	Res	Type	Atoms	Z	Observed(Å)	Ideal(Å)
1	A	31	TYR	CE2-CZ	-6.74	1.29	1.38
1	A	116	GLU	CG-CD	6.00	1.60	1.51

All (1) bond angle outliers are listed below:

Mol	Chain	Res	Type	Atoms	Z	Observed(°)	Ideal(°)
1	A	30	ARG	NE-CZ-NH2	-5.20	117.70	120.30

There are no chirality outliers.

There are no planarity outliers.

5.2 Too-close contacts [i](#)

In the following table, the Non-H and H(model) columns list the number of non-hydrogen atoms and hydrogen atoms in the chain respectively. The H(added) column lists the number of hydrogen atoms added and optimized by MolProbity. The Clashes column lists the number of clashes within the asymmetric unit, whereas Symm-Clashes lists symmetry related clashes.

Mol	Chain	Non-H	H(model)	H(added)	Clashes	Symm-Clashes
1	A	1261	93	1172	7	0
2	B	1291	44	1244	21	0
3	A	43	0	32	6	0

Continued on next page...

Continued from previous page...

Mol	Chain	Non-H	H(model)	H(added)	Clashes	Symm-Clashes
3	B	86	0	64	21	0
4	A	279	0	0	1	0
4	B	281	0	0	8	0
All	All	3241	137	2512	41	0

The all-atom clashscore is defined as the number of clashes found per 1000 atoms (including hydrogen atoms). The all-atom clashscore for this structure is 8.

All (41) close contacts within the same asymmetric unit are listed below, sorted by their clash magnitude.

Atom-1	Atom-2	Interatomic distance (Å)	Clash overlap (Å)
2:B:153:CYS:SG	3:B:555:BLA:HAC	1.59	1.43
1:A:75:ALA:HB1	1:A:81[B]:LYS:HD3	1.46	0.97
1:A:84:CYS:SG	3:A:484:BLA:HAC	2.11	0.89
3:B:584:BLA:HMD2	3:B:584:BLA:HC	1.42	0.84
3:A:484:BLA:HC	3:A:484:BLA:HMD2	1.47	0.80
2:B:30:MET:CE	4:B:328:HOH:O	2.33	0.77
2:B:153:CYS:CB	3:B:555:BLA:HAC	2.19	0.71
2:B:30:MET:SD	4:B:328:HOH:O	2.52	0.68
2:B:82:CYS:SG	3:B:584:BLA:CB	2.85	0.65
1:A:137:LYS:HG3	1:A:154:ILE:HG21	1.80	0.63
2:B:78:ARG:NH2	4:B:425:HOH:O	2.32	0.63
2:B:88:ILE:HG21	3:B:584:BLA:HAB	1.81	0.62
2:B:153:CYS:SG	3:B:555:BLA:C4C	2.89	0.60
1:A:84:CYS:SG	3:A:484:BLA:CB	2.91	0.58
2:B:65:GLN:HG2	4:B:542:HOH:O	2.02	0.58
3:B:584:BLA:CMD	3:B:584:BLA:HC	2.15	0.57
2:B:68:GLN:HG3	4:B:281:HOH:O	2.05	0.56
1:A:84:CYS:SG	3:A:484:BLA:C3C	2.94	0.56
2:B:82:CYS:SG	3:B:584:BLA:C3C	2.95	0.55
3:B:584:BLA:HBC1	3:B:584:BLA:HMC1	1.88	0.55
3:B:555:BLA:HMD2	3:B:555:BLA:NC	2.21	0.54
2:B:72:MEN:HE22	3:B:584:BLA:HBD2	1.89	0.54
3:B:555:BLA:HMD2	3:B:555:BLA:HC	1.74	0.51
2:B:153:CYS:SG	3:B:555:BLA:C3C	2.94	0.50
3:A:484:BLA:NC	3:A:484:BLA:HMD2	2.22	0.49
3:B:584:BLA:O1A	3:B:584:BLA:HHA	2.13	0.49
1:A:118:ILE:HD12	1:A:118:ILE:N	2.29	0.48
2:B:82:CYS:SG	3:B:584:BLA:HAC	2.48	0.47
3:B:555:BLA:HMA1	3:B:555:BLA:HB	1.79	0.47
2:B:62[A]:GLU:HG3	4:B:299:HOH:O	2.15	0.46

Continued on next page...

Continued from previous page...

Atom-1	Atom-2	Interatomic distance (Å)	Clash overlap (Å)
1:A:116:GLU:HG3	4:A:362:HOH:O	2.17	0.45
3:B:555:BLA:NB	3:B:555:BLA:HMA1	2.31	0.44
2:B:36:LYS:HE2	3:B:555:BLA:HMD3	2.00	0.43
2:B:30:MET:HE2	4:B:328:HOH:O	2.06	0.43
3:A:484:BLA:HC	3:A:484:BLA:CMD	2.26	0.43
2:B:95:TYR:O	2:B:98[A]:ILE:HG22	2.19	0.43
2:B:151:GLY:HA3	3:B:555:BLA:CMD	2.49	0.42
2:B:30:MET:HB3	4:B:328:HOH:O	2.20	0.42
2:B:158:ALA:O	2:B:162:THR:HG23	2.20	0.41
3:B:584:BLA:HMD2	3:B:584:BLA:NC	2.23	0.41
3:B:555:BLA:HB	3:B:555:BLA:CMA	2.33	0.41

There are no symmetry-related clashes.

5.3 Torsion angles [i](#)

5.3.1 Protein backbone [i](#)

In the following table, the Percentiles column shows the percent Ramachandran outliers of the chain as a percentile score with respect to all X-ray entries followed by that with respect to entries of similar resolution.

The Analysed column shows the number of residues for which the backbone conformation was analysed, and the total number of residues.

Mol	Chain	Analysed	Favoured	Allowed	Outliers	Percentiles	
1	A	173/162 (107%)	171 (99%)	2 (1%)	0	100	100
2	B	178/172 (104%)	175 (98%)	3 (2%)	0	100	100
All	All	351/334 (105%)	346 (99%)	5 (1%)	0	100	100

There are no Ramachandran outliers to report.

5.3.2 Protein sidechains [i](#)

In the following table, the Percentiles column shows the percent sidechain outliers of the chain as a percentile score with respect to all X-ray entries followed by that with respect to entries of similar resolution.

The Analysed column shows the number of residues for which the sidechain conformation was analysed, and the total number of residues.

Mol	Chain	Analysed	Rotameric	Outliers	Percentiles	
1	A	137/125 (110%)	135 (98%)	2 (2%)	72	44
2	B	139/132 (105%)	138 (99%)	1 (1%)	88	73
All	All	276/257 (107%)	273 (99%)	3 (1%)	78	58

All (3) residues with a non-rotameric sidechain are listed below:

Mol	Chain	Res	Type
1	A	33	ARG
1	A	50	ARG
2	B	91	ARG

Some sidechains can be flipped to improve hydrogen bonding and reduce clashes. There are no such sidechains identified.

5.3.3 RNA ⓘ

There are no RNA molecules in this entry.

5.4 Non-standard residues in protein, DNA, RNA chains ⓘ

1 non-standard protein/DNA/RNA residue is modelled in this entry.

In the following table, the Counts columns list the number of bonds (or angles) for which Mogul statistics could be retrieved, the number of bonds (or angles) that are observed in the model and the number of bonds (or angles) that are defined in the chemical component dictionary. The Link column lists molecule types, if any, to which the group is linked. The Z score for a bond length (or angle) is the number of standard deviations the observed value is removed from the expected value. A bond length (or angle) with $|Z| > 2$ is considered an outlier worth inspection. RMSZ is the root-mean-square of all Z scores of the bond lengths (or angles).

Mol	Type	Chain	Res	Link	Bond lengths			Bond angles		
					Counts	RMSZ	$\# Z > 2$	Counts	RMSZ	$\# Z > 2$
2	MEN	B	72	2	7,8,9	1.24	1 (14%)	5,9,11	1.45	2 (40%)

In the following table, the Chirals column lists the number of chiral outliers, the number of chiral centers analysed, the number of these observed in the model and the number defined in the chemical component dictionary. Similar counts are reported in the Torsion and Rings columns. '-' means no outliers of that kind were identified.

Mol	Type	Chain	Res	Link	Chirals	Torsions	Rings
2	MEN	B	72	2	-	0/6/8/10	0/0/0/0

All (1) bond length outliers are listed below:

Mol	Chain	Res	Type	Atoms	Z	Observed(Å)	Ideal(Å)
2	B	72	MEN	CG-ND2	2.34	1.46	1.34

All (2) bond angle outliers are listed below:

Mol	Chain	Res	Type	Atoms	Z	Observed(°)	Ideal(°)
2	B	72	MEN	O-C-CA	-2.24	119.66	125.49
2	B	72	MEN	CB-CG-ND2	2.15	119.05	116.03

There are no chirality outliers.

There are no torsion outliers.

There are no ring outliers.

1 monomer is involved in 1 short contact:

Mol	Chain	Res	Type	Clashes	Symm-Clashes
2	B	72	MEN	1	0

5.5 Carbohydrates [i](#)

There are no carbohydrates in this entry.

5.6 Ligand geometry [i](#)

3 ligands are modelled in this entry.

In the following table, the Counts columns list the number of bonds (or angles) for which Mogul statistics could be retrieved, the number of bonds (or angles) that are observed in the model and the number of bonds (or angles) that are defined in the chemical component dictionary. The Link column lists molecule types, if any, to which the group is linked. The Z score for a bond length (or angle) is the number of standard deviations the observed value is removed from the expected value. A bond length (or angle) with $|Z| > 2$ is considered an outlier worth inspection. RMSZ is the root-mean-square of all Z scores of the bond lengths (or angles).

Mol	Type	Chain	Res	Link	Bond lengths			Bond angles		
					Counts	RMSZ	$\# Z > 2$	Counts	RMSZ	$\# Z > 2$
3	BLA	A	484	1	35,46,46	5.46	24 (68%)	43,67,67	2.69	21 (48%)
3	BLA	B	555	2	35,46,46	5.79	25 (71%)	43,67,67	3.12	20 (46%)
3	BLA	B	584	2	35,46,46	5.75	24 (68%)	43,67,67	2.92	22 (51%)

In the following table, the Chirals column lists the number of chiral outliers, the number of chiral

centers analysed, the number of these observed in the model and the number defined in the chemical component dictionary. Similar counts are reported in the Torsion and Rings columns. '-' means no outliers of that kind were identified.

Mol	Type	Chain	Res	Link	Chirals	Torsions	Rings
3	BLA	A	484	1	-	2/22/74/74	0/4/4/4
3	BLA	B	555	2	-	2/22/74/74	0/4/4/4
3	BLA	B	584	2	-	2/22/74/74	0/4/4/4

All (73) bond length outliers are listed below:

Mol	Chain	Res	Type	Atoms	Z	Observed(Å)	Ideal(Å)
3	B	584	BLA	C1C-C2C	2.02	1.53	1.47
3	B	584	BLA	CAB-C3B	2.05	1.54	1.47
3	B	555	BLA	CAB-C3B	2.06	1.54	1.47
3	A	484	BLA	C1C-C2C	2.09	1.53	1.47
3	A	484	BLA	C3B-C4B	2.10	1.53	1.47
3	A	484	BLA	CAC-C3C	2.10	1.54	1.47
3	B	555	BLA	C1C-C2C	2.16	1.53	1.47
3	B	555	BLA	C3B-C4B	2.30	1.54	1.47
3	B	584	BLA	C3B-C4B	2.41	1.54	1.47
3	A	484	BLA	C1A-CHA	2.78	1.50	1.40
3	A	484	BLA	C4A-CHB	2.89	1.51	1.40
3	A	484	BLA	C1B-C2B	3.00	1.50	1.45
3	B	555	BLA	C1A-CHA	3.02	1.51	1.40
3	B	584	BLA	C1A-CHA	3.09	1.52	1.40
3	B	555	BLA	CBC-CAC	3.13	1.45	1.30
3	B	584	BLA	C4A-CHB	3.24	1.52	1.40
3	B	555	BLA	C4A-CHB	3.45	1.53	1.40
3	B	584	BLA	C1B-C2B	3.60	1.51	1.45
3	B	555	BLA	C1B-C2B	3.73	1.52	1.45
3	A	484	BLA	C2A-C3A	3.77	1.48	1.37
3	A	484	BLA	C4D-C3D	3.91	1.52	1.45
3	B	555	BLA	C2A-C3A	4.09	1.49	1.37
3	B	584	BLA	C2A-C3A	4.20	1.50	1.37
3	B	584	BLA	C4D-C3D	4.20	1.52	1.45
3	B	584	BLA	C1D-C2D	4.45	1.55	1.45
3	B	555	BLA	C4B-NB	4.55	1.48	1.37
3	B	555	BLA	C4D-C3D	4.55	1.53	1.45
3	A	484	BLA	C4B-NB	4.59	1.48	1.37
3	B	584	BLA	C4B-NB	4.59	1.48	1.37
3	A	484	BLA	C1D-C2D	4.67	1.56	1.45
3	B	555	BLA	C1D-C2D	4.75	1.56	1.45
3	A	484	BLA	CHD-C1D	5.10	1.53	1.40

Continued on next page...

Continued from previous page...

Mol	Chain	Res	Type	Atoms	Z	Observed(Å)	Ideal(Å)
3	A	484	BLA	C4D-ND	5.18	1.49	1.38
3	B	555	BLA	CHD-C1D	5.36	1.53	1.40
3	B	584	BLA	CHD-C1D	5.46	1.54	1.40
3	B	584	BLA	C1C-NC	5.51	1.50	1.37
3	B	584	BLA	C4D-ND	5.62	1.50	1.38
3	B	555	BLA	C1C-NC	5.63	1.50	1.37
3	A	484	BLA	CHD-C4C	5.64	1.51	1.37
3	B	555	BLA	C4D-ND	5.75	1.51	1.38
3	A	484	BLA	C1C-NC	5.91	1.51	1.37
3	B	584	BLA	CHD-C4C	5.93	1.51	1.37
3	B	555	BLA	CHD-C4C	6.22	1.52	1.37
3	A	484	BLA	C1D-ND	6.24	1.51	1.37
3	B	555	BLA	C3D-C2D	6.27	1.50	1.36
3	B	584	BLA	C1D-ND	6.49	1.51	1.37
3	B	584	BLA	C3D-C2D	6.53	1.50	1.36
3	A	484	BLA	C1B-NB	6.53	1.49	1.37
3	A	484	BLA	C3B-C2B	6.53	1.50	1.36
3	A	484	BLA	C3D-C2D	6.66	1.51	1.36
3	B	555	BLA	C1B-NB	6.78	1.49	1.37
3	B	584	BLA	C1B-NB	6.81	1.49	1.37
3	B	555	BLA	C3B-C2B	6.82	1.51	1.36
3	B	555	BLA	C1D-ND	6.90	1.52	1.37
3	B	555	BLA	C3C-C2C	7.00	1.51	1.36
3	A	484	BLA	C3C-C2C	7.05	1.51	1.36
3	B	584	BLA	C3B-C2B	7.10	1.51	1.36
3	B	584	BLA	C3C-C2C	7.12	1.51	1.36
3	A	484	BLA	OC-C1C	7.68	1.38	1.23
3	A	484	BLA	CHB-C1B	7.69	1.51	1.34
3	B	584	BLA	C4C-NC	7.81	1.51	1.37
3	B	584	BLA	OC-C1C	7.94	1.38	1.23
3	A	484	BLA	C4C-NC	8.09	1.51	1.37
3	B	555	BLA	CHB-C1B	8.17	1.52	1.34
3	B	555	BLA	OC-C1C	8.22	1.39	1.23
3	A	484	BLA	OB-C4B	8.24	1.39	1.23
3	B	555	BLA	C4C-NC	8.27	1.52	1.37
3	B	584	BLA	CHB-C1B	8.47	1.53	1.34
3	B	555	BLA	OB-C4B	8.70	1.40	1.23
3	B	584	BLA	OB-C4B	8.83	1.40	1.23
3	A	484	BLA	CHA-C4D	18.25	1.51	1.35
3	B	555	BLA	CHA-C4D	19.60	1.52	1.35
3	B	584	BLA	CHA-C4D	19.74	1.52	1.35

All (63) bond angle outliers are listed below:

Mol	Chain	Res	Type	Atoms	Z	Observed(°)	Ideal(°)
3	B	555	BLA	CAC-C3C-C4C	-7.29	105.02	124.80
3	B	555	BLA	OB-C4B-C3B	-7.08	112.13	129.82
3	B	584	BLA	OB-C4B-C3B	-7.08	112.15	129.82
3	A	484	BLA	C4C-NC-C1C	-6.52	101.20	110.73
3	B	555	BLA	CHD-C4C-NC	-6.34	112.44	126.16
3	A	484	BLA	OB-C4B-C3B	-6.26	114.18	129.82
3	B	555	BLA	C4C-CHD-C1D	-5.89	112.83	128.06
3	B	584	BLA	CHD-C4C-NC	-5.76	113.68	126.16
3	B	555	BLA	OC-C1C-NC	-5.42	110.74	125.14
3	A	484	BLA	CHB-C1B-C2B	-5.14	116.29	126.94
3	B	555	BLA	CHB-C1B-C2B	-5.11	116.36	126.94
3	B	584	BLA	OC-C1C-NC	-5.10	111.60	125.14
3	A	484	BLA	OB-C4B-NB	-4.98	111.91	125.14
3	B	584	BLA	CAB-C3B-C2B	-4.95	111.80	128.41
3	B	555	BLA	CAB-C3B-C2B	-4.72	112.60	128.41
3	A	484	BLA	CHD-C4C-NC	-4.71	115.95	126.16
3	B	584	BLA	C1B-NB-C4B	-4.67	103.89	110.73
3	B	584	BLA	CHB-C1B-C2B	-4.62	117.38	126.94
3	B	555	BLA	OB-C4B-NB	-4.50	113.20	125.14
3	B	584	BLA	OB-C4B-NB	-4.30	113.72	125.14
3	A	484	BLA	CHD-C1D-ND	-4.19	116.93	124.91
3	A	484	BLA	OC-C1C-NC	-4.08	114.31	125.14
3	B	555	BLA	CAA-C2A-C1A	-4.07	122.59	127.01
3	B	584	BLA	CAB-C3B-C4B	-3.91	110.38	123.49
3	B	584	BLA	C4C-CHD-C1D	-3.89	118.01	128.06
3	B	555	BLA	C1B-NB-C4B	-3.78	105.21	110.73
3	B	555	BLA	C4C-NC-C1C	-3.71	105.30	110.73
3	B	584	BLA	CMC-C2C-C3C	-3.66	118.66	128.48
3	B	584	BLA	C4C-NC-C1C	-3.59	105.47	110.73
3	A	484	BLA	C4C-CHD-C1D	-3.48	119.06	128.06
3	B	555	BLA	CAB-C3B-C4B	-3.42	112.03	123.49
3	B	555	BLA	CMC-C2C-C3C	-3.31	119.60	128.48
3	B	555	BLA	OC-C1C-C2C	-3.14	112.96	128.97
3	B	584	BLA	OC-C1C-C2C	-3.01	113.62	128.97
3	A	484	BLA	C1B-NB-C4B	-2.99	106.36	110.73
3	B	584	BLA	CHD-C1D-ND	-2.92	119.35	124.91
3	B	584	BLA	CMC-C2C-C1C	-2.92	114.03	121.58
3	A	484	BLA	CAB-C3B-C2B	-2.90	118.69	128.41
3	B	555	BLA	CHB-C1B-NB	-2.83	120.41	130.87
3	B	584	BLA	CAD-CBD-CGD	-2.65	107.89	112.75
3	A	484	BLA	OC-C1C-C2C	-2.54	116.02	128.97
3	A	484	BLA	C4C-C3C-C2C	-2.50	99.40	106.97
3	A	484	BLA	CMC-C2C-C3C	-2.46	121.88	128.48

Continued on next page...

Continued from previous page...

Mol	Chain	Res	Type	Atoms	Z	Observed(°)	Ideal(°)
3	B	555	BLA	CAC-C3C-C2C	-2.45	120.20	128.41
3	B	584	BLA	CAC-C3C-C2C	-2.44	120.23	128.41
3	B	584	BLA	CHB-C1B-NB	-2.44	121.85	130.87
3	A	484	BLA	CHA-C4D-C3D	-2.43	119.86	125.55
3	A	484	BLA	CAD-C3D-C4D	-2.31	120.94	125.06
3	B	584	BLA	CMB-C2B-C3B	-2.28	122.35	128.48
3	B	584	BLA	CAA-C2A-C1A	-2.26	124.56	127.01
3	B	555	BLA	CMB-C2B-C3B	-2.24	122.47	128.48
3	B	555	BLA	CHA-C4D-C3D	-2.23	120.33	125.55
3	B	555	BLA	CMB-C2B-C1B	-2.17	121.32	124.20
3	A	484	BLA	CAC-C3C-C4C	-2.15	118.97	124.80
3	B	584	BLA	CAC-C3C-C4C	-2.12	119.05	124.80
3	A	484	BLA	CMC-C2C-C1C	-2.05	116.26	121.58
3	A	484	BLA	CBB-CAB-C3B	-2.04	116.64	127.01
3	A	484	BLA	CHB-C1B-NB	-2.03	123.37	130.87
3	A	484	BLA	CMD-C2D-C1D	2.48	129.10	125.06
3	B	584	BLA	CMD-C2D-C1D	2.87	129.73	125.06
3	B	555	BLA	CMD-C2D-C1D	3.11	130.11	125.06
3	B	584	BLA	CHD-C1D-C2D	3.42	133.23	124.88
3	A	484	BLA	CHD-C1D-C2D	4.04	134.75	124.88

There are no chirality outliers.

All (6) torsion outliers are listed below:

Mol	Chain	Res	Type	Atoms
3	B	555	BLA	C4C-CHD-C1D-C2D
3	B	555	BLA	C4C-CHD-C1D-ND
3	B	584	BLA	C4C-CHD-C1D-C2D
3	A	484	BLA	C4C-CHD-C1D-C2D
3	B	584	BLA	C4C-CHD-C1D-ND
3	A	484	BLA	C4C-CHD-C1D-ND

There are no ring outliers.

3 monomers are involved in 27 short contacts:

Mol	Chain	Res	Type	Clashes	Symm-Clashes
3	A	484	BLA	6	0
3	B	555	BLA	11	0
3	B	584	BLA	10	0

5.7 Other polymers

There are no such residues in this entry.

5.8 Polymer linkage issues

There are no chain breaks in this entry.

6 Fit of model and data [i](#)

6.1 Protein, DNA and RNA chains [i](#)

In the following table, the column labelled ‘#RSRZ> 2’ contains the number (and percentage) of RSRZ outliers, followed by percent RSRZ outliers for the chain as percentile scores relative to all X-ray entries and entries of similar resolution. The OWAB column contains the minimum, median, 95th percentile and maximum values of the occupancy-weighted average B-factor per residue. The column labelled ‘Q< 0.9’ lists the number of (and percentage) of residues with an average occupancy less than 0.9.

Mol	Chain	Analysed	<RSRZ>	#RSRZ>2	OWAB(Å ²)	Q<0.9
1	A	161/162 (99%)	-0.67	0 100 100	6, 11, 19, 27	0
2	B	169/172 (98%)	-0.59	0 100 100	7, 13, 23, 31	0
All	All	330/334 (98%)	-0.63	0 100 100	6, 12, 21, 31	0

There are no RSRZ outliers to report.

6.2 Non-standard residues in protein, DNA, RNA chains [i](#)

In the following table, the Atoms column lists the number of modelled atoms in the group and the number defined in the chemical component dictionary. LLDF column lists the quality of electron density of the group with respect to its neighbouring residues in protein, DNA or RNA chains. The B-factors column lists the minimum, median, 95th percentile and maximum values of B factors of atoms in the group. The column labelled ‘Q< 0.9’ lists the number of atoms with occupancy less than 0.9.

Mol	Type	Chain	Res	Atoms	RSCC	RSR	LLDF	B-factors(Å ²)	Q<0.9
2	MEN	B	72	9/10	0.98	0.04	-	10,11,15,15	0

6.3 Carbohydrates [i](#)

There are no carbohydrates in this entry.

6.4 Ligands [i](#)

In the following table, the Atoms column lists the number of modelled atoms in the group and the number defined in the chemical component dictionary. LLDF column lists the quality of electron density of the group with respect to its neighbouring residues in protein, DNA or RNA chains. The B-factors column lists the minimum, median, 95th percentile and maximum values of B factors of atoms in the group. The column labelled ‘Q< 0.9’ lists the number of atoms with occupancy less than 0.9.

Mol	Type	Chain	Res	Atoms	RSCC	RSR	LLDF	B-factors(\AA^2)	Q<0.9
3	BLA	A	484	43/43	0.96	0.08	2.04	6,9,12,13	0
3	BLA	B	584	43/43	0.92	0.12	1.63	8,18,28,31	0
3	BLA	B	555	43/43	0.92	0.09	0.90	12,16,23,26	0

6.5 Other polymers ⓘ

There are no such residues in this entry.