



Full wwPDB X-ray Structure Validation Report ⓘ

Dec 6, 2016 – 09:03 PM EST

PDB ID : 5L44
Title : Structure of K-26-DCP in complex with the K-26 tripeptide
Authors : Masuyer, G.; Acharya, K.R.; Kramer, G.J.; Bachmann, B.O.
Deposited on : 2016-05-24
Resolution : 1.75 Å(reported)

This is a Full wwPDB X-ray Structure Validation Report for a publicly released PDB entry.

We welcome your comments at validation@mail.wwpdb.org

A user guide is available at

<http://wwpdb.org/validation/2016/XrayValidationReportHelp>

with specific help available everywhere you see the ⓘ symbol.

The following versions of software and data (see [references ⓘ](#)) were used in the production of this report:

MolProbity : 4.02b-467
Mogul : 1.7.1 (RC1), CSD as537be (2016)
Xtriage (Phenix) : 1.9-1692
EDS : rb-20028442
Percentile statistics : 20151230.v01 (using entries in the PDB archive December 30th 2015)
Refmac : 5.8.0135
CCP4 : 6.5.0
Ideal geometry (proteins) : Engh & Huber (2001)
Ideal geometry (DNA, RNA) : Parkinson et al. (1996)
Validation Pipeline (wwPDB-VP) : rb-20028442

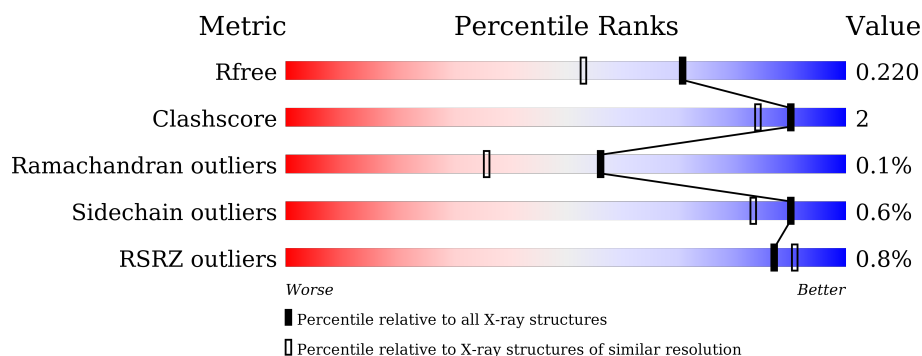
1 Overall quality at a glance ⓘ

The following experimental techniques were used to determine the structure:

X-RAY DIFFRACTION

The reported resolution of this entry is 1.75 Å.

Percentile scores (ranging between 0-100) for global validation metrics of the entry are shown in the following graphic. The table shows the number of entries on which the scores are based.



Metric	Whole archive (#Entries)	Similar resolution (#Entries, resolution range(Å))
R_{free}	91344	1609 (1.76-1.76)
Clashscore	102246	1730 (1.76-1.76)
Ramachandran outliers	100387	1711 (1.76-1.76)
Sidechain outliers	100360	1711 (1.76-1.76)
RSRZ outliers	91569	1610 (1.76-1.76)

The table below summarises the geometric issues observed across the polymeric chains and their fit to the electron density. The red, orange, yellow and green segments on the lower bar indicate the fraction of residues that contain outliers for ≥ 3 , 2, 1 and 0 types of geometric quality criteria. A grey segment represents the fraction of residues that are not modelled. The numeric value for each fraction is indicated below the corresponding segment, with a dot representing fractions $\leq 5\%$. The upper red bar (where present) indicates the fraction of residues that have poor fit to the electron density. The numeric value is given above the bar.

Mol	Chain	Length	Quality of chain
1	A	683	<div> <div style="width: 100%; height: 10px; background: linear-gradient(to right, red 1%, orange 1%, yellow 1%, green 91%, grey 6%);"></div> <div style="display: flex; justify-content: space-between; width: 90%; margin: 0 auto;"> % 91% 6% </div> </div>
1	B	683	<div> <div style="width: 100%; height: 10px; background: linear-gradient(to right, red 1%, orange 1%, yellow 1%, green 91%, grey 6%);"></div> <div style="display: flex; justify-content: space-between; width: 90%; margin: 0 auto;"> % 91% 6% </div> </div>

The following table lists non-polymeric compounds, carbohydrate monomers and non-standard residues in protein, DNA, RNA chains that are outliers for geometric or electron-density-fit criteria:

Mol	Type	Chain	Res	Chirality	Geometry	Clashes	Electron density
4	SO4	A	1004	-	-	-	X
4	SO4	B	1004	-	-	-	X

2 Entry composition

There are 6 unique types of molecules in this entry. The entry contains 11677 atoms, of which 0 are hydrogens and 0 are deuteriums.

In the tables below, the ZeroOcc column contains the number of atoms modelled with zero occupancy, the AltConf column contains the number of residues with at least one atom in alternate conformation and the Trace column contains the number of residues modelled with at most 2 atoms.

- Molecule 1 is a protein called K-26 dipeptidyl carboxypeptidase.

Mol	Chain	Residues	Atoms					ZeroOcc	AltConf	Trace
1	A	662	Total	C	N	O	S	0	4	0
			5287	3358	922	997	10			
1	B	662	Total	C	N	O	S	0	3	0
			5274	3352	918	994	10			

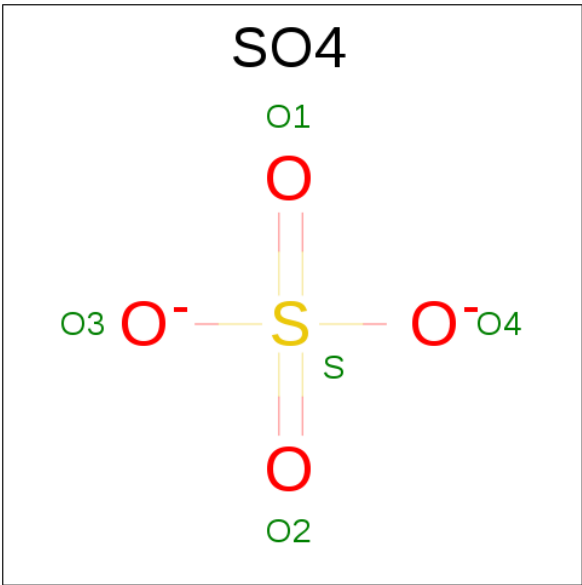
- Molecule 2 is ZINC ION (three-letter code: ZN) (formula: Zn).

Mol	Chain	Residues	Atoms		ZeroOcc	AltConf
2	B	1	Total	Zn	0	0
			1	1		
2	A	1	Total	Zn	0	0
			1	1		

- Molecule 3 is MAGNESIUM ION (three-letter code: MG) (formula: Mg).

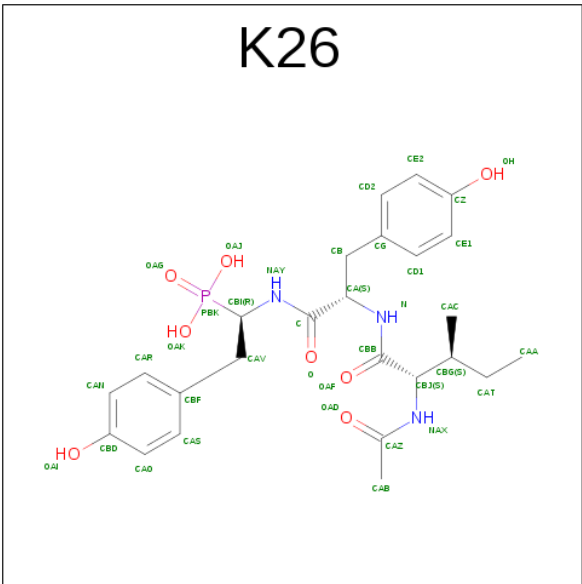
Mol	Chain	Residues	Atoms		ZeroOcc	AltConf
3	B	2	Total	Mg	0	0
			2	2		
3	A	2	Total	Mg	0	0
			2	2		

- Molecule 4 is SULFATE ION (three-letter code: SO4) (formula: O₄S).



Mol	Chain	Residues	Atoms			ZeroOcc	AltConf
4	A	1	Total	O	S	0	0
			5	4	1		
4	B	1	Total	O	S	0	0
			5	4	1		

- Molecule 5 is N-ACETYL-L-ILE-L-TYR-(R)-1-AMINO-2-(4-HYDROXYPHENYL)ETHYLPHOSPHONIC ACID (three-letter code: K26) (formula: C₂₅H₃₄N₃O₈P).



Continued from previous page...

Mol	Chain	Residues	Atoms					ZeroOcc	AltConf
5	B	1	Total	C	N	O	P	0	0
			37	25	3	8	1		

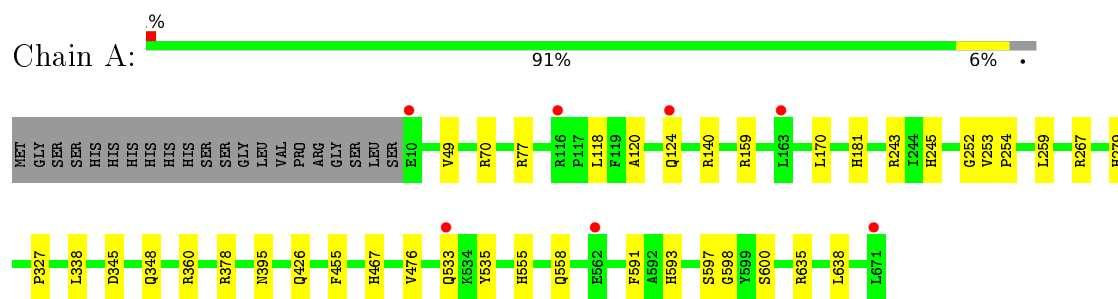
- Molecule 6 is water.

Mol	Chain	Residues	Atoms		ZeroOcc	AltConf
6	A	506	Total	O	0	0
			506	506		
6	B	520	Total	O	0	0
			520	520		

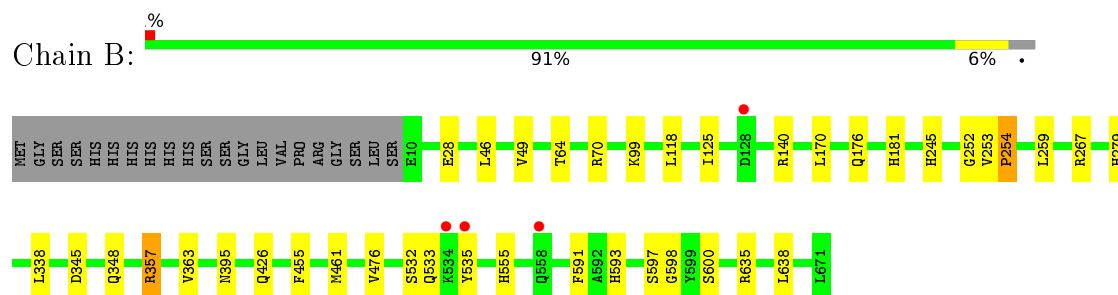
3 Residue-property plots [i](#)

These plots are drawn for all protein, RNA and DNA chains in the entry. The first graphic for a chain summarises the proportions of errors displayed in the second graphic. The second graphic shows the sequence view annotated by issues in geometry and electron density. Residues are color-coded according to the number of geometric quality criteria for which they contain at least one outlier: green = 0, yellow = 1, orange = 2 and red = 3 or more. A red dot above a residue indicates a poor fit to the electron density ($RSRZ > 2$). Stretches of 2 or more consecutive residues without any outlier are shown as a green connector. Residues present in the sample, but not in the model, are shown in grey.

- Molecule 1: K-26 dipeptidyl carboxypeptidase



- Molecule 1: K-26 dipeptidyl carboxypeptidase



4 Data and refinement statistics

Property	Value	Source
Space group	P 1	Depositor
Cell constants a, b, c, α , β , γ	61.58Å 66.94Å 102.00Å 97.72° 90.71° 117.37°	Depositor
Resolution (Å)	33.00 – 1.75 32.74 – 1.75	Depositor EDS
% Data completeness (in resolution range)	89.2 (33.00-1.75) 82.2 (32.74-1.75)	Depositor EDS
R_{merge}	0.10	Depositor
R_{sym}	(Not available)	Depositor
$\langle I/\sigma(I) \rangle$ ¹	2.24 (at 1.75Å)	Xtriage
Refinement program	REFMAC 5.8.0131	Depositor
R, R_{free}	0.185 , 0.213 0.194 , 0.220	Depositor DCC
R_{free} test set	6436 reflections (5.27%)	DCC
Wilson B-factor (Å ²)	13.9	Xtriage
Anisotropy	0.085	Xtriage
Bulk solvent k_{sol} (e/Å ³), B_{sol} (Å ²)	0.35 , 22.5	EDS
L-test for twinning ²	$\langle L \rangle = 0.46$, $\langle L^2 \rangle = 0.29$	Xtriage
Estimated twinning fraction	0.267 for h,-h-k,-l	Xtriage
F_o, F_c correlation	0.94	EDS
Total number of atoms	11677	wwPDB-VP
Average B, all atoms (Å ²)	16.0	wwPDB-VP

Xtriage's analysis on translational NCS is as follows: *The largest off-origin peak in the Patterson function is 5.10% of the height of the origin peak. No significant pseudotranslation is detected.*

¹Intensities estimated from amplitudes.

²Theoretical values of $\langle |L| \rangle$, $\langle L^2 \rangle$ for acentric reflections are 0.5, 0.333 respectively for untwinned datasets, and 0.375, 0.2 for perfectly twinned datasets.

5 Model quality

5.1 Standard geometry

Bond lengths and bond angles in the following residue types are not validated in this section: MG, K26, ZN, SO4

The Z score for a bond length (or angle) is the number of standard deviations the observed value is removed from the expected value. A bond length (or angle) with $|Z| > 5$ is considered an outlier worth inspection. RMSZ is the root-mean-square of all Z scores of the bond lengths (or angles).

Mol	Chain	Bond lengths		Bond angles	
		RMSZ	$\# Z > 5$	RMSZ	$\# Z > 5$
1	A	0.55	0/5432	0.74	7/7399 (0.1%)
1	B	0.54	0/5422	0.75	3/7386 (0.0%)
All	All	0.54	0/10854	0.75	10/14785 (0.1%)

Chiral center outliers are detected by calculating the chiral volume of a chiral center and verifying if the center is modelled as a planar moiety or with the opposite hand. A planarity outlier is detected by checking planarity of atoms in a peptide group, atoms in a mainchain group or atoms of a sidechain that are expected to be planar.

Mol	Chain	#Chirality outliers	#Planarity outliers
1	A	0	2
1	B	0	2
All	All	0	4

There are no bond length outliers.

All (10) bond angle outliers are listed below:

Mol	Chain	Res	Type	Atoms	Z	Observed(°)	Ideal(°)
1	A	77	ARG	NE-CZ-NH1	6.03	123.32	120.30
1	B	254	PRO	N-CA-C	5.74	127.02	112.10
1	A	360	ARG	NE-CZ-NH1	5.72	123.16	120.30
1	B	357	ARG	NE-CZ-NH1	5.69	123.15	120.30
1	B	70	ARG	NE-CZ-NH1	5.53	123.06	120.30
1	A	254	PRO	N-CA-C	5.45	126.27	112.10
1	A	243	ARG	NE-CZ-NH1	5.32	122.96	120.30
1	A	77	ARG	NE-CZ-NH2	-5.31	117.64	120.30
1	A	378	ARG	NE-CZ-NH1	5.31	122.96	120.30
1	A	70	ARG	NE-CZ-NH1	5.10	122.85	120.30

There are no chirality outliers.

All (4) planarity outliers are listed below:

Mol	Chain	Res	Type	Group
1	A	253	VAL	Mainchain,Peptide
1	B	253	VAL	Mainchain,Peptide

5.2 Too-close contacts ⓘ

In the following table, the Non-H and H(model) columns list the number of non-hydrogen atoms and hydrogen atoms in the chain respectively. The H(added) column lists the number of hydrogen atoms added and optimized by MolProbity. The Clashes column lists the number of clashes within the asymmetric unit, whereas Symm-Clashes lists symmetry related clashes.

Mol	Chain	Non-H	H(model)	H(added)	Clashes	Symm-Clashes
1	A	5287	0	5132	22	0
1	B	5274	0	5124	23	0
2	A	1	0	0	0	0
2	B	1	0	0	0	0
3	A	2	0	0	0	0
3	B	2	0	0	0	0
4	A	5	0	0	1	0
4	B	5	0	0	1	0
5	A	37	0	32	3	0
5	B	37	0	31	0	0
6	A	506	0	0	7	0
6	B	520	0	0	4	0
All	All	11677	0	10319	49	0

The all-atom clashscore is defined as the number of clashes found per 1000 atoms (including hydrogen atoms). The all-atom clashscore for this structure is 2.

All (49) close contacts within the same asymmetric unit are listed below, sorted by their clash magnitude.

Atom-1	Atom-2	Interatomic distance (Å)	Clash overlap (Å)
1:A:467:HIS:CD2	6:A:1102:HOH:O	2.27	0.86
4:B:1004:SO4:O3	6:B:1101:HOH:O	1.97	0.82
5:A:1005:K26:OAJ	6:A:1102:HOH:O	2.03	0.77
4:A:1004:SO4:O2	6:A:1101:HOH:O	2.01	0.77
1:B:426:GLN:HE22	1:B:476:VAL:H	1.35	0.75
1:A:426:GLN:HE22	1:A:476:VAL:H	1.38	0.69
1:A:395:ASN:HD21	1:A:635:ARG:HH22	1.41	0.68
1:B:395:ASN:HD21	1:B:635:ARG:HH22	1.43	0.66

Continued on next page...

Continued from previous page...

Atom-1	Atom-2	Interatomic distance (Å)	Clash overlap (Å)
1:B:99:LYS:HE3	1:B:176:GLN:HE22	1.62	0.65
1:A:159[A]:ARG:HD2	1:A:159[A]:ARG:O	2.02	0.59
1:A:181:HIS:HD2	1:A:252:GLY:H	1.52	0.57
1:A:395:ASN:ND2	1:A:635:ARG:HH22	2.03	0.57
1:A:267:ARG:HH11	1:A:555:HIS:HE1	1.53	0.56
1:A:267:ARG:HH11	1:A:555:HIS:CE1	2.24	0.54
1:B:345:ASP:O	1:B:348:GLN:HG2	2.06	0.54
1:B:395:ASN:ND2	1:B:635:ARG:HH22	2.05	0.54
1:A:338:LEU:HD21	1:A:535:TYR:CD2	2.46	0.51
1:B:338:LEU:HD22	1:B:532:SER:HB2	1.93	0.51
1:A:49:VAL:HG13	1:A:118:LEU:HD22	1.94	0.50
1:B:363:VAL:HG21	1:B:461:MET:HG2	1.93	0.50
1:B:181:HIS:HD2	1:B:252:GLY:H	1.60	0.49
1:A:597:SER:OG	1:A:598:GLY:N	2.45	0.49
1:B:267:ARG:HH11	1:B:555:HIS:HE1	1.60	0.49
5:A:1005:K26:C	6:A:1102:HOH:O	2.61	0.48
1:A:593:HIS:HD2	6:A:1474:HOH:O	1.95	0.48
1:B:338:LEU:HD21	1:B:535:TYR:CD2	2.49	0.48
1:B:46:LEU:HA	1:B:49:VAL:HG12	1.97	0.47
1:B:267:ARG:HH11	1:B:555:HIS:CE1	2.33	0.46
1:A:140:ARG:HD3	1:A:140:ARG:O	2.16	0.45
1:B:593:HIS:HD2	6:B:1483:HOH:O	1.99	0.45
1:B:245:HIS:HE1	6:B:1565:HOH:O	1.98	0.45
1:A:49:VAL:CG1	1:A:118:LEU:HD22	2.47	0.45
1:A:279:HIS:HE1	1:A:600:SER:OG	1.99	0.45
1:A:170:LEU:HD22	1:A:259:LEU:CD1	2.48	0.44
1:B:597:SER:OG	1:B:598:GLY:N	2.49	0.44
1:A:345:ASP:O	1:A:348:GLN:HG2	2.18	0.44
1:A:245:HIS:HE1	6:A:1547:HOH:O	1.99	0.43
1:B:64:THR:HB	1:B:125:ILE:HD11	2.01	0.43
1:A:120:ALA:O	1:A:124:GLN:HG2	2.20	0.42
1:A:455:PHE:CD2	1:A:533:GLN:NE2	2.87	0.42
1:B:357:ARG:NH2	6:B:1106:HOH:O	2.39	0.42
1:A:593:HIS:CE1	5:A:1005:K26:HAR	2.55	0.41
1:B:279:HIS:HE1	1:B:600:SER:OG	2.02	0.41
1:B:49:VAL:HG23	1:B:118:LEU:HD22	2.03	0.41
1:A:124:GLN:HG3	6:A:1572:HOH:O	2.21	0.41
1:B:170:LEU:HD22	1:B:259:LEU:CD1	2.51	0.40
1:B:49:VAL:CG2	1:B:118:LEU:HD22	2.51	0.40
1:B:140:ARG:O	1:B:140:ARG:HD3	2.22	0.40
1:B:455:PHE:CD2	1:B:533:GLN:NE2	2.90	0.40

There are no symmetry-related clashes.

5.3 Torsion angles [i](#)

5.3.1 Protein backbone [i](#)

In the following table, the Percentiles column shows the percent Ramachandran outliers of the chain as a percentile score with respect to all X-ray entries followed by that with respect to entries of similar resolution.

The Analysed column shows the number of residues for which the backbone conformation was analysed, and the total number of residues.

Mol	Chain	Analysed	Favoured	Allowed	Outliers	Percentiles	
1	A	664/683 (97%)	647 (97%)	17 (3%)	0	100	100
1	B	663/683 (97%)	648 (98%)	14 (2%)	1 (0%)	52	32
All	All	1327/1366 (97%)	1295 (98%)	31 (2%)	1 (0%)	56	36

All (1) Ramachandran outliers are listed below:

Mol	Chain	Res	Type
1	B	254	PRO

5.3.2 Protein sidechains [i](#)

In the following table, the Percentiles column shows the percent sidechain outliers of the chain as a percentile score with respect to all X-ray entries followed by that with respect to entries of similar resolution.

The Analysed column shows the number of residues for which the sidechain conformation was analysed, and the total number of residues.

Mol	Chain	Analysed	Rotameric	Outliers	Percentiles	
1	A	556/570 (98%)	552 (99%)	4 (1%)	88	79
1	B	555/570 (97%)	552 (100%)	3 (0%)	92	87
All	All	1111/1140 (98%)	1104 (99%)	7 (1%)	90	83

All (7) residues with a non-rotameric sidechain are listed below:

Mol	Chain	Res	Type
1	A	327	PRO
1	A	558	GLN

Continued on next page...

Continued from previous page...

Mol	Chain	Res	Type
1	A	591	PHE
1	A	638	LEU
1	B	28	GLU
1	B	591	PHE
1	B	638	LEU

Some sidechains can be flipped to improve hydrogen bonding and reduce clashes. All (33) such sidechains are listed below:

Mol	Chain	Res	Type
1	A	45	GLN
1	A	100	GLN
1	A	157	GLN
1	A	176	GLN
1	A	177	ASN
1	A	181	HIS
1	A	183	ASN
1	A	245	HIS
1	A	279	HIS
1	A	395	ASN
1	A	400	GLN
1	A	421	ASN
1	A	426	GLN
1	A	555	HIS
1	A	593	HIS
1	B	45	GLN
1	B	73	GLN
1	B	100	GLN
1	B	124	GLN
1	B	157	GLN
1	B	176	GLN
1	B	177	ASN
1	B	181	HIS
1	B	183	ASN
1	B	245	HIS
1	B	279	HIS
1	B	320	GLN
1	B	395	ASN
1	B	421	ASN
1	B	426	GLN
1	B	555	HIS
1	B	593	HIS
1	B	621	HIS

5.3.3 RNA ⓘ

There are no RNA molecules in this entry.

5.4 Non-standard residues in protein, DNA, RNA chains ⓘ

There are no non-standard protein/DNA/RNA residues in this entry.

5.5 Carbohydrates ⓘ

There are no carbohydrates in this entry.

5.6 Ligand geometry ⓘ

Of 10 ligands modelled in this entry, 6 are monoatomic - leaving 4 for Mogul analysis.

In the following table, the Counts columns list the number of bonds (or angles) for which Mogul statistics could be retrieved, the number of bonds (or angles) that are observed in the model and the number of bonds (or angles) that are defined in the chemical component dictionary. The Link column lists molecule types, if any, to which the group is linked. The Z score for a bond length (or angle) is the number of standard deviations the observed value is removed from the expected value. A bond length (or angle) with $|Z| > 2$ is considered an outlier worth inspection. RMSZ is the root-mean-square of all Z scores of the bond lengths (or angles).

Mol	Type	Chain	Res	Link	Bond lengths			Bond angles		
					Counts	RMSZ	# $ Z > 2$	Counts	RMSZ	# $ Z > 2$
4	SO4	A	1004	-	4,4,4	0.65	0	6,6,6	0.31	0
5	K26	A	1005	2	37,38,38	1.58	5 (13%)	46,53,53	1.32	5 (10%)
4	SO4	B	1004	-	4,4,4	0.68	0	6,6,6	0.50	0
5	K26	B	1005	2	37,38,38	1.36	4 (10%)	46,53,53	1.21	5 (10%)

In the following table, the Chirals column lists the number of chiral outliers, the number of chiral centers analysed, the number of these observed in the model and the number defined in the chemical component dictionary. Similar counts are reported in the Torsion and Rings columns. '-' means no outliers of that kind were identified.

Mol	Type	Chain	Res	Link	Chirals	Torsions	Rings
4	SO4	A	1004	-	-	0/0/0/0	0/0/0/0
5	K26	A	1005	2	-	0/40/40/40	0/2/2/2
4	SO4	B	1004	-	-	0/0/0/0	0/0/0/0
5	K26	B	1005	2	-	0/40/40/40	0/2/2/2

All (9) bond length outliers are listed below:

Mol	Chain	Res	Type	Atoms	Z	Observed(Å)	Ideal(Å)
5	A	1005	K26	PBK-OAK	-4.96	1.47	1.54
5	A	1005	K26	PBK-OAJ	-4.61	1.47	1.54
5	B	1005	K26	PBK-OAJ	-3.60	1.49	1.54
5	B	1005	K26	CB-CG	-3.46	1.42	1.51
5	A	1005	K26	CB-CG	-3.23	1.43	1.51
5	A	1005	K26	CAV-CBF	-3.09	1.43	1.51
5	B	1005	K26	CAV-CBF	-2.65	1.44	1.51
5	A	1005	K26	PBK-CBI	3.14	1.88	1.84
5	B	1005	K26	PBK-OAK	3.44	1.60	1.54

All (10) bond angle outliers are listed below:

Mol	Chain	Res	Type	Atoms	Z	Observed(°)	Ideal(°)
5	B	1005	K26	CG-CB-CA	-3.65	102.66	113.44
5	A	1005	K26	CG-CB-CA	-3.43	103.30	113.44
5	B	1005	K26	OAK-PBK-OAG	-2.50	107.00	113.58
5	A	1005	K26	OAK-PBK-OAG	-2.46	107.09	113.58
5	B	1005	K26	C-CA-N	-2.03	105.54	111.28
5	B	1005	K26	CAN-CAR-CBF	2.52	124.57	121.02
5	A	1005	K26	CAN-CAR-CBF	2.55	124.61	121.02
5	B	1005	K26	CAV-CBF-CAS	2.79	126.54	120.91
5	A	1005	K26	CAV-CBF-CAS	3.08	127.14	120.91
5	A	1005	K26	OAK-PBK-OAJ	3.26	117.31	107.67

There are no chirality outliers.

There are no torsion outliers.

There are no ring outliers.

3 monomers are involved in 5 short contacts:

Mol	Chain	Res	Type	Clashes	Symm-Clashes
4	A	1004	SO4	1	0
5	A	1005	K26	3	0
4	B	1004	SO4	1	0

5.7 Other polymers ⓘ

There are no such residues in this entry.

5.8 Polymer linkage issues ⓘ

There are no chain breaks in this entry.

6 Fit of model and data [i](#)

6.1 Protein, DNA and RNA chains [i](#)

In the following table, the column labelled ‘#RSRZ> 2’ contains the number (and percentage) of RSRZ outliers, followed by percent RSRZ outliers for the chain as percentile scores relative to all X-ray entries and entries of similar resolution. The OWAB column contains the minimum, median, 95th percentile and maximum values of the occupancy-weighted average B-factor per residue. The column labelled ‘Q< 0.9’ lists the number of (and percentage) of residues with an average occupancy less than 0.9.

Mol	Chain	Analysed	<RSRZ>	#RSRZ>2	OWAB(Å ²)	Q<0.9
1	A	662/683 (96%)	-0.16	7 (1%) 82 87	5, 15, 30, 46	0
1	B	662/683 (96%)	-0.24	4 (0%) 90 92	5, 14, 28, 43	0
All	All	1324/1366 (96%)	-0.20	11 (0%) 87 91	5, 15, 29, 46	0

All (11) RSRZ outliers are listed below:

Mol	Chain	Res	Type	RSRZ
1	A	10	GLU	3.6
1	B	534	LYS	2.7
1	A	671	LEU	2.7
1	A	124	GLN	2.6
1	A	562	GLU	2.4
1	A	116	ARG	2.4
1	B	558	GLN	2.3
1	A	163	LEU	2.1
1	B	128	ASP	2.1
1	A	533	GLN	2.0
1	B	535	TYR	2.0

6.2 Non-standard residues in protein, DNA, RNA chains [i](#)

There are no non-standard protein/DNA/RNA residues in this entry.

6.3 Carbohydrates [i](#)

There are no carbohydrates in this entry.

6.4 Ligands ⓘ

In the following table, the Atoms column lists the number of modelled atoms in the group and the number defined in the chemical component dictionary. LLDF column lists the quality of electron density of the group with respect to its neighbouring residues in protein, DNA or RNA chains. The B-factors column lists the minimum, median, 95th percentile and maximum values of B factors of atoms in the group. The column labelled 'Q< 0.9' lists the number of atoms with occupancy less than 0.9.

Mol	Type	Chain	Res	Atoms	RSCC	RSR	LLDF	B-factors(Å ²)	Q<0.9
4	SO4	A	1004	5/5	0.95	0.13	6.49	19,22,24,26	0
4	SO4	B	1004	5/5	0.97	0.11	6.07	19,22,24,25	0
5	K26	A	1005	37/37	0.95	0.11	1.24	8,14,23,27	0
5	K26	B	1005	37/37	0.94	0.10	1.00	10,15,22,28	0
3	MG	A	1002	1/1	0.99	0.04	-2.34	8,8,8,8	0
3	MG	B	1002	1/1	0.99	0.03	-4.41	8,8,8,8	0
2	ZN	A	1001	1/1	1.00	0.02	-5.61	9,9,9,9	0
2	ZN	B	1001	1/1	1.00	0.03	-6.46	9,9,9,9	0
3	MG	A	1003	1/1	0.96	0.08	-	27,27,27,27	0
3	MG	B	1003	1/1	0.98	0.09	-	25,25,25,25	0

6.5 Other polymers ⓘ

There are no such residues in this entry.