



Full wwPDB X-ray Structure Validation Report ⓘ

Jan 31, 2016 – 08:37 PM GMT

PDB ID : 1L6M
Title : Neutrophil Gelatinase-associated Lipocalin is a Novel Bacteriostatic Agent that Interferes with Siderophore-mediated Iron Acquisition
Authors : Goetz, D.H.; Borregaard, N.; Bluhm, M.E.; Raymond, K.N.; Strong, R.K.
Deposited on : 2002-03-11
Resolution : 2.40 Å(reported)

This is a Full wwPDB X-ray Structure Validation Report for a publicly released PDB entry.
We welcome your comments at validation@mail.wwpdb.org
A user guide is available at
<http://wwpdb.org/validation/2016/XrayValidationReportHelp>
with specific help available everywhere you see the ⓘ symbol.

The following versions of software and data (see [references ⓘ](#)) were used in the production of this report:

MolProbity : 4.02b-467
Mogul : 1.7 (RC4), CSD as536be (2015)
Xtriage (Phenix) : **NOT EXECUTED**
EDS : **NOT EXECUTED**
Percentile statistics : 20151230.v01 (using entries in the PDB archive December 30th 2015)
Ideal geometry (proteins) : Engh & Huber (2001)
Ideal geometry (DNA, RNA) : Parkinson et al. (1996)
Validation Pipeline (wwPDB-VP) : trunk26865

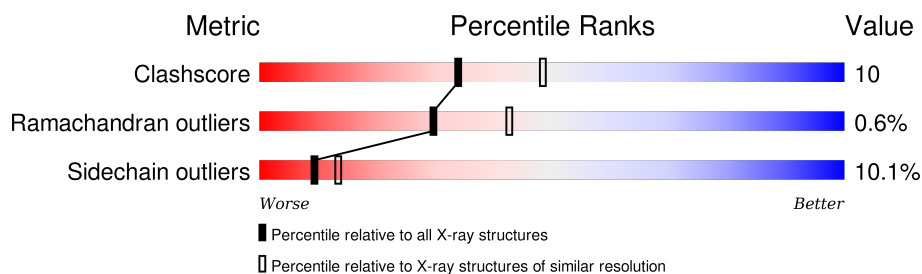
1 Overall quality at a glance

The following experimental techniques were used to determine the structure:

X-RAY DIFFRACTION

The reported resolution of this entry is 2.40 Å.

Percentile scores (ranging between 0-100) for global validation metrics of the entry are shown in the following graphic. The table shows the number of entries on which the scores are based.



Metric	Whole archive (#Entries)	Similar resolution (#Entries, resolution range(Å))
Clashscore	102246	3407 (2.40-2.40)
Ramachandran outliers	100387	3351 (2.40-2.40)
Sidechain outliers	100360	3352 (2.40-2.40)

The table below summarises the geometric issues observed across the polymeric chains and their fit to the electron density. The red, orange, yellow and green segments on the lower bar indicate the fraction of residues that contain outliers for ≥ 3 , 2, 1 and 0 types of geometric quality criteria. A grey segment represents the fraction of residues that are not modelled. The numeric value for each fraction is indicated below the corresponding segment, with a dot representing fractions $\leq 5\%$. The upper red bar (where present) indicates the fraction of residues that have poor fit to the electron density. The numeric value is given above the bar.

Note EDS was not executed.

Mol	Chain	Length	Quality of chain
1	A	180	
1	B	180	
1	C	180	

The following table lists non-polymeric compounds, carbohydrate monomers and non-standard residues in protein, DNA, RNA chains that are outliers for geometric or electron-density-fit criteria:

Mol	Type	Chain	Res	Chirality	Geometry	Clashes	Electron density
4	DBH	A	202	-	-	X	-

2 Entry composition

There are 6 unique types of molecules in this entry. The entry contains 4318 atoms, of which 0 are hydrogens and 0 are deuteriums.

In the tables below, the ZeroOcc column contains the number of atoms modelled with zero occupancy, the AltConf column contains the number of residues with at least one atom in alternate conformation and the Trace column contains the number of residues modelled with at most 2 atoms.

- Molecule 1 is a protein called Neutrophil gelatinase-associated lipocalin.

Mol	Chain	Residues	Atoms					ZeroOcc	AltConf	Trace
1	A	174	Total	C	N	O	S	0	2	0
			1418	917	234	263	4			
1	B	169	Total	C	N	O	S	0	1	0
			1351	876	228	243	4			
1	C	172	Total	C	N	O	S	0	0	0
			1364	887	226	247	4			

There are 9 discrepancies between the modelled and reference sequences:

Chain	Residue	Modelled	Actual	Comment	Reference
A	-1	GLY	-	CLONING ARTIFACT	UNP P80188
A	0	SER	-	CLONING ARTIFACT	UNP P80188
A	87	SER	CYS	ENGINEERED	UNP P80188
B	-1	GLY	-	CLONING ARTIFACT	UNP P80188
B	0	SER	-	CLONING ARTIFACT	UNP P80188
B	87	SER	CYS	ENGINEERED	UNP P80188
C	-1	GLY	-	CLONING ARTIFACT	UNP P80188
C	0	SER	-	CLONING ARTIFACT	UNP P80188
C	87	SER	CYS	ENGINEERED	UNP P80188

- Molecule 2 is FE (III) ION (three-letter code: FE) (formula: Fe).

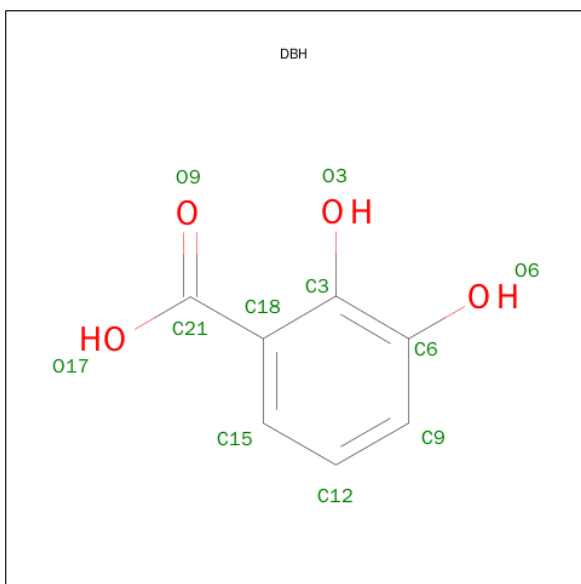
Mol	Chain	Residues	Atoms		ZeroOcc	AltConf
2	B	1	Total	Fe	0	0
			1	1		
2	A	1	Total	Fe	0	0
			1	1		
2	C	1	Total	Fe	0	0
			1	1		

- Molecule 3 is SULFATE ION (three-letter code: SO4) (formula: O₄S).



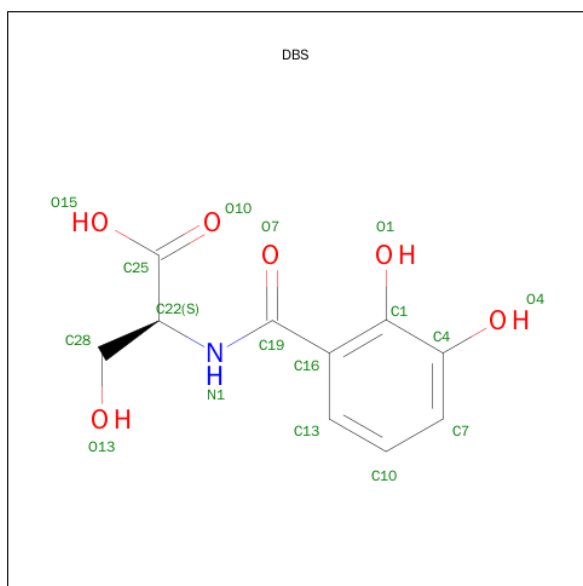
Mol	Chain	Residues	Atoms			ZeroOcc	AltConf
3	A	1	Total	O	S	0	0
			5	4	1		
3	C	1	Total	O	S	0	0
			5	4	1		
3	C	1	Total	O	S	0	0
			5	4	1		

- Molecule 4 is 2,3-DIHYDROXY-BENZOIC ACID (three-letter code: DBH) (formula: C₇H₆O₄).



Mol	Chain	Residues	Atoms			ZeroOcc	AltConf
4	A	1	Total	C	O	0	0
			11	7	4		
4	A	1	Total	C	O	0	0
			11	7	4		
4	B	1	Total	C	O	0	0
			11	7	4		
4	B	1	Total	C	O	0	0
			11	7	4		
4	C	1	Total	C	O	0	0
			11	7	4		

- Molecule 5 is 2-(2,3-DIHYDROXY-BENZOYLAMINO)-3-HYDROXY-PROPIONIC ACID (three-letter code: DBS) (formula: C₁₀H₁₁NO₆).



Mol	Chain	Residues	Atoms				ZeroOcc	AltConf
5	A	1	Total	C	N	O	0	0
			17	10	1	6		
5	B	1	Total	C	N	O	0	0
			17	10	1	6		
5	C	1	Total	C	N	O	0	0
			17	10	1	6		

- Molecule 6 is water.

Mol	Chain	Residues	Atoms		ZeroOcc	AltConf
6	A	26	Total	O	0	0
			26	26		

Continued on next page...

Continued from previous page...

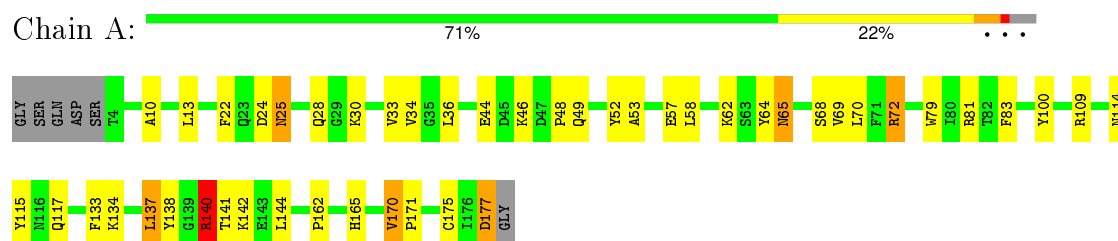
Mol	Chain	Residues	Atoms		ZeroOcc	AltConf
6	B	8	Total	O	0	0
			8	8		
6	C	27	Total	O	0	0
			27	27		

3 Residue-property plots

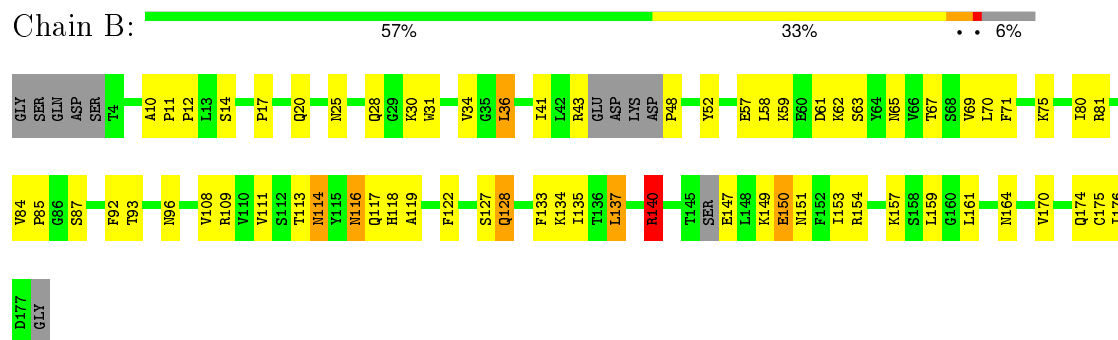
These plots are drawn for all protein, RNA and DNA chains in the entry. The first graphic for a chain summarises the proportions of errors displayed in the second graphic. The second graphic shows the sequence view annotated by issues in geometry and electron density. Residues are color-coded according to the number of geometric quality criteria for which they contain at least one outlier: green = 0, yellow = 1, orange = 2 and red = 3 or more. A red dot above a residue indicates a poor fit to the electron density ($RSRZ > 2$). Stretches of 2 or more consecutive residues without any outlier are shown as a green connector. Residues present in the sample, but not in the model, are shown in grey.

Note EDS was not executed.

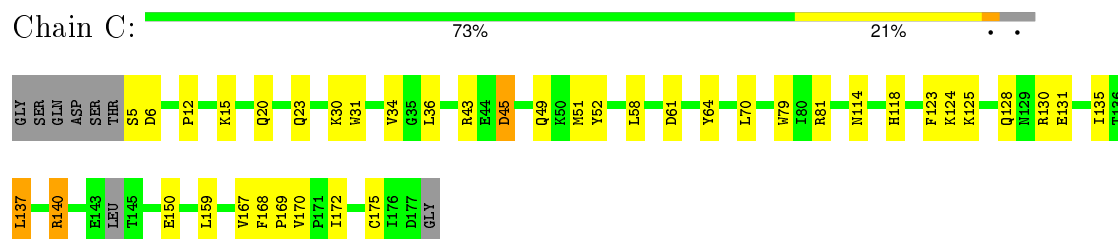
• Molecule 1: Neutrophil gelatinase-associated lipocalin



• Molecule 1: Neutrophil gelatinase-associated lipocalin



• Molecule 1: Neutrophil gelatinase-associated lipocalin



4 Data and refinement statistics

Xtriage (Phenix) and EDS were not executed - this section will therefore be incomplete.

Property	Value	Source
Space group	P 41 21 2	Depositor
Cell constants a, b, c, α , β , γ	115.08Å 115.08Å 115.22Å 90.00° 90.00° 90.00°	Depositor
Resolution (Å)	19.76 – 2.40	Depositor
% Data completeness (in resolution range)	96.5 (19.76-2.40)	Depositor
R_{merge}	(Not available)	Depositor
R_{sym}	0.06	Depositor
Refinement program	REFMAC 5	Depositor
R, R_{free}	0.232 , 0.258	Depositor
Estimated twinning fraction	No twinning to report.	Xtriage
Total number of atoms	4318	wwPDB-VP
Average B, all atoms (Å ²)	41.0	wwPDB-VP

5 Model quality ⓘ

5.1 Standard geometry ⓘ

Bond lengths and bond angles in the following residue types are not validated in this section: DBH, DBS, FE, SO4

The Z score for a bond length (or angle) is the number of standard deviations the observed value is removed from the expected value. A bond length (or angle) with $|Z| > 5$ is considered an outlier worth inspection. RMSZ is the root-mean-square of all Z scores of the bond lengths (or angles).

Mol	Chain	Bond lengths		Bond angles	
		RMSZ	$\# Z > 5$	RMSZ	$\# Z > 5$
1	A	1.13	1/1455 (0.1%)	1.16	5/1974 (0.3%)
1	B	0.94	0/1384	1.01	1/1874 (0.1%)
1	C	1.12	1/1400 (0.1%)	1.11	5/1900 (0.3%)
All	All	1.07	2/4239 (0.0%)	1.10	11/5748 (0.2%)

Chiral center outliers are detected by calculating the chiral volume of a chiral center and verifying if the center is modelled as a planar moiety or with the opposite hand. A planarity outlier is detected by checking planarity of atoms in a peptide group, atoms in a mainchain group or atoms of a sidechain that are expected to be planar.

Mol	Chain	#Chirality outliers	#Planarity outliers
1	A	0	2
1	B	0	1
1	C	0	1
All	All	0	4

All (2) bond length outliers are listed below:

Mol	Chain	Res	Type	Atoms	Z	Observed(Å)	Ideal(Å)
1	A	83	PHE	CE1-CZ	5.73	1.48	1.37
1	C	150	GLU	CG-CD	5.40	1.60	1.51

All (11) bond angle outliers are listed below:

Mol	Chain	Res	Type	Atoms	Z	Observed(°)	Ideal(°)
1	A	140	ARG	NE-CZ-NH2	-12.52	114.04	120.30
1	C	140	ARG	NE-CZ-NH1	11.74	126.17	120.30
1	C	140	ARG	NE-CZ-NH2	-11.70	114.45	120.30
1	A	140	ARG	NE-CZ-NH1	10.66	125.63	120.30
1	A	115	TYR	CB-CG-CD2	6.34	124.80	121.00

Continued on next page...

Continued from previous page...

Mol	Chain	Res	Type	Atoms	Z	Observed(°)	Ideal(°)
1	A	177	ASP	CB-CG-OD2	-5.90	112.99	118.30
1	C	64	TYR	CB-CA-C	-5.55	99.30	110.40
1	A	140	ARG	CD-NE-CZ	5.42	131.18	123.60
1	C	45	ASP	CB-CG-OD2	5.22	123.00	118.30
1	C	61	ASP	CB-CG-OD1	5.13	122.91	118.30
1	B	140	ARG	NE-CZ-NH1	5.01	122.80	120.30

There are no chirality outliers.

All (4) planarity outliers are listed below:

Mol	Chain	Res	Type	Group
1	A	138	TYR	Sidechain
1	A	64	TYR	Sidechain
1	B	48	PRO	Mainchain
1	C	43	ARG	Sidechain

5.2 Too-close contacts ⓘ

In the following table, the Non-H and H(model) columns list the number of non-hydrogen atoms and hydrogen atoms in the chain respectively. The H(added) column lists the number of hydrogen atoms added and optimized by MolProbity. The Clashes column lists the number of clashes within the asymmetric unit, whereas Symm-Clashes lists symmetry related clashes.

Mol	Chain	Non-H	H(model)	H(added)	Clashes	Symm-Clashes
1	A	1418	0	1386	30	0
1	B	1351	0	1318	38	0
1	C	1364	0	1326	21	0
2	A	1	0	0	0	0
2	B	1	0	0	0	0
2	C	1	0	0	0	0
3	A	5	0	0	0	0
3	C	10	0	0	0	0
4	A	22	0	7	5	0
4	B	22	0	7	0	0
4	C	11	0	4	0	0
5	A	17	0	9	0	0
5	B	17	0	9	0	0
5	C	17	0	9	2	0
6	A	26	0	0	0	0
6	B	8	0	0	1	0
6	C	27	0	0	0	0

Continued on next page...

Continued from previous page...

Mol	Chain	Non-H	H(model)	H(added)	Clashes	Symm-Clashes
All	All	4318	0	4075	84	0

The all-atom clashscore is defined as the number of clashes found per 1000 atoms (including hydrogen atoms). The all-atom clashscore for this structure is 10.

All (84) close contacts within the same asymmetric unit are listed below, sorted by their clash magnitude.

Atom-1	Atom-2	Interatomic distance (Å)	Clash overlap (Å)
1:B:122:PHE:HD2	1:B:135:ILE:HD11	1.17	1.06
1:B:34:VAL:HG23	1:B:137:LEU:HD13	1.44	0.95
1:A:141:THR:HB	1:C:20:GLN:HE21	1.34	0.92
1:C:5:SER:HA	1:C:130:ARG:HH22	1.39	0.88
1:B:122:PHE:CD2	1:B:135:ILE:HD11	2.09	0.83
1:B:114:ASN:HD21	1:B:118:HIS:H	1.27	0.81
1:A:141:THR:HB	1:C:20:GLN:NE2	2.01	0.75
1:B:80:ILE:O	1:B:81[B]:ARG:HG3	1.90	0.71
1:A:70:LEU:HD11	1:A:72:ARG:HG2	1.74	0.69
1:A:114:ASN:HD21	1:A:117:GLN:HE21	1.38	0.69
1:A:114:ASN:HD21	1:A:117:GLN:HB2	1.58	0.68
1:C:5:SER:HA	1:C:130:ARG:NH2	2.10	0.66
1:A:81:ARG:HD2	4:A:202:DBH:O17	1.96	0.64
1:B:127:SER:C	1:B:128:GLN:HG2	2.18	0.63
1:B:149:LYS:O	1:B:153:ILE:HG13	1.99	0.62
1:B:114:ASN:ND2	1:B:118:HIS:H	1.97	0.61
1:A:25:ASN:HD22	1:A:25:ASN:H	1.49	0.61
1:B:122:PHE:HD2	1:B:135:ILE:CD1	2.06	0.59
1:B:80:ILE:C	1:B:81[B]:ARG:HG3	2.22	0.59
1:B:52:TYR:HB2	1:B:69:VAL:O	2.04	0.57
1:A:140:ARG:HG2	1:C:23:GLN:NE2	2.20	0.57
1:C:52:TYR:HB2	1:C:70:LEU:HG	1.89	0.55
1:C:170:VAL:O	1:C:172:ILE:HG23	2.07	0.54
1:B:34:VAL:CG2	1:B:137:LEU:HD13	2.29	0.54
1:B:157:LYS:HA	1:B:161:LEU:O	2.08	0.54
1:B:71:PHE:CE1	1:B:174:GLN:NE2	2.76	0.54
1:A:10:ALA:HA	1:A:133:PHE:CD1	2.43	0.54
1:C:34:VAL:HG12	1:C:51:MET:CE	2.39	0.53
1:B:113:THR:OG1	1:B:119:ALA:HB2	2.08	0.53
1:A:100:TYR:CE2	4:A:202:DBH:O9	2.62	0.52
1:B:71:PHE:HD2	1:B:75:LYS:O	1.93	0.52
1:B:36:LEU:HD13	1:B:41:ILE:HD12	1.91	0.52
1:B:10:ALA:HA	1:B:133:PHE:CD1	2.45	0.52

Continued on next page...

Continued from previous page...

Atom-1	Atom-2	Interatomic distance (Å)	Clash overlap (Å)
1:A:58:LEU:HD22	1:A:62:LYS:HA	1.92	0.52
1:B:174:GLN:O	1:B:176:ILE:N	2.42	0.51
1:C:135:ILE:HD11	1:C:159:LEU:HD12	1.91	0.51
1:C:49:GLN:O	1:C:169:PRO:HA	2.10	0.51
1:A:142:LYS:H	1:C:20:GLN:NE2	2.09	0.51
1:B:134:LYS:O	1:B:135:ILE:HD13	2.11	0.51
1:A:70:LEU:C	1:A:70:LEU:HD12	2.31	0.50
1:A:137:LEU:HD13	1:A:144:LEU:HD12	1.95	0.48
1:B:17:PRO:O	1:B:111:VAL:HA	2.13	0.48
1:C:124:LYS:HD2	1:C:131:GLU:OE1	2.14	0.48
1:B:80:ILE:O	1:B:81[A]:ARG:CG	2.62	0.48
1:B:71:PHE:HE1	1:B:174:GLN:HE21	1.55	0.48
1:B:80:ILE:O	1:B:81[A]:ARG:HG3	2.16	0.46
1:A:141:THR:HG22	1:C:20:GLN:HG2	1.97	0.46
1:C:30:LYS:HG2	1:C:31:TRP:N	2.31	0.46
1:C:34:VAL:HG12	1:C:51:MET:HE1	1.98	0.46
1:A:28:GLN:OE1	1:A:58:LEU:HB2	2.15	0.46
1:B:114:ASN:ND2	1:B:117:GLN:H	2.15	0.45
1:A:114:ASN:ND2	1:A:117:GLN:HE21	2.11	0.45
1:A:134:LYS:NZ	4:A:201:DBH:O6	2.48	0.45
1:A:65:ASN:HD22	1:A:65:ASN:HA	1.63	0.44
1:C:125:LYS:NZ	5:C:403:DBS:H282	2.32	0.44
1:A:46:LYS:O	1:A:48:PRO:HD3	2.18	0.44
1:A:114:ASN:ND2	1:A:117:GLN:HB2	2.30	0.44
1:A:22:PHE:CE1	1:A:24:ASP:HA	2.52	0.44
1:B:11:PRO:HG3	1:B:159:LEU:HD13	2.00	0.44
1:A:162:PRO:CG	1:A:165:HIS:HD2	2.30	0.44
1:B:31:TRP:CZ3	1:B:140:ARG:HD2	2.53	0.44
1:B:135:ILE:HG23	1:B:135:ILE:HD12	1.53	0.43
1:A:34:VAL:HG22	1:A:137:LEU:HD13	2.00	0.43
1:A:53:ALA:O	1:A:68:SER:HA	2.18	0.43
1:B:61:ASP:O	1:B:62:LYS:HB2	2.19	0.43
1:A:170:VAL:HA	1:A:171:PRO:HD3	1.84	0.43
1:C:123:PHE:HB3	5:C:403:DBS:HC7	2.01	0.42
1:B:84:VAL:HA	1:B:85:PRO:HD3	1.94	0.42
1:B:93:THR:HB	6:B:549:HOH:O	2.19	0.42
1:B:92:PHE:HB2	1:B:108:VAL:HB	2.01	0.42
1:B:151:ASN:HA	1:B:154:ARG:HG2	2.02	0.42
1:A:72:ARG:HD3	1:A:72:ARG:HH21	1.75	0.42
1:B:25:ASN:O	1:B:28:GLN:HG2	2.20	0.42
1:C:12:PRO:HG2	1:C:15:LYS:HG3	2.02	0.42

Continued on next page...

Continued from previous page...

Atom-1	Atom-2	Interatomic distance (Å)	Clash overlap (Å)
1:B:114:ASN:O	1:B:116:ASN:N	2.53	0.41
1:C:114:ASN:ND2	1:C:118:HIS:CD2	2.89	0.41
1:A:33:VAL:HG21	1:A:52:TYR:CZ	2.56	0.41
1:A:79:TRP:HZ2	4:A:202:DBH:O17	2.04	0.41
1:B:147:GLU:O	1:B:150:GLU:HB2	2.21	0.40
1:B:59:LYS:HD3	1:B:65:ASN:HB2	2.02	0.40
1:B:11:PRO:HA	1:B:12:PRO:HD3	1.93	0.40
1:A:79:TRP:HZ2	4:A:202:DBH:C21	2.34	0.40
1:C:167:VAL:HG12	1:C:168:PHE:N	2.35	0.40
1:C:34:VAL:HG23	1:C:137:LEU:HD13	2.03	0.40

There are no symmetry-related clashes.

5.3 Torsion angles [i](#)

5.3.1 Protein backbone [i](#)

In the following table, the Percentiles column shows the percent Ramachandran outliers of the chain as a percentile score with respect to all X-ray entries followed by that with respect to entries of similar resolution.

The Analysed column shows the number of residues for which the backbone conformation was analysed, and the total number of residues.

Mol	Chain	Analysed	Favoured	Allowed	Outliers	Percentiles	
1	A	174/180 (97%)	165 (95%)	8 (5%)	1 (1%)	30	43
1	B	164/180 (91%)	153 (93%)	10 (6%)	1 (1%)	30	43
1	C	168/180 (93%)	158 (94%)	9 (5%)	1 (1%)	30	43
All	All	506/540 (94%)	476 (94%)	27 (5%)	3 (1%)	30	43

All (3) Ramachandran outliers are listed below:

Mol	Chain	Res	Type
1	A	175	CYS
1	B	175	CYS
1	C	175	CYS

5.3.2 Protein sidechains ⓘ

In the following table, the Percentiles column shows the percent sidechain outliers of the chain as a percentile score with respect to all X-ray entries followed by that with respect to entries of similar resolution.

The Analysed column shows the number of residues for which the sidechain conformation was analysed, and the total number of residues.

Mol	Chain	Analysed	Rotameric	Outliers	Percentiles	
1	A	157/164 (96%)	141 (90%)	16 (10%)	9	13
1	B	145/164 (88%)	124 (86%)	21 (14%)	4	4
1	C	147/164 (90%)	138 (94%)	9 (6%)	23	36
All	All	449/492 (91%)	403 (90%)	46 (10%)	9	13

All (46) residues with a non-rotameric sidechain are listed below:

Mol	Chain	Res	Type
1	A	13	LEU
1	A	25	ASN
1	A	30	LYS
1	A	36	LEU
1	A	44	GLU
1	A	49	GLN
1	A	57[A]	GLU
1	A	57[B]	GLU
1	A	65	ASN
1	A	69	VAL
1	A	72	ARG
1	A	109	ARG
1	A	137	LEU
1	A	140	ARG
1	A	170	VAL
1	A	177	ASP
1	B	14	SER
1	B	20	GLN
1	B	30	LYS
1	B	36	LEU
1	B	43	ARG
1	B	57	GLU
1	B	58	LEU
1	B	63	SER
1	B	67	THR
1	B	70	LEU

Continued on next page...

Continued from previous page...

Mol	Chain	Res	Type
1	B	87	SER
1	B	96	ASN
1	B	109	ARG
1	B	114	ASN
1	B	116	ASN
1	B	128	GLN
1	B	137	LEU
1	B	140	ARG
1	B	150	GLU
1	B	164	ASN
1	B	170	VAL
1	C	6	ASP
1	C	36	LEU
1	C	45	ASP
1	C	58	LEU
1	C	79	TRP
1	C	81	ARG
1	C	128	GLN
1	C	137	LEU
1	C	140	ARG

Some sidechains can be flipped to improve hydrogen bonding and reduce clashes. All (11) such sidechains are listed below:

Mol	Chain	Res	Type
1	A	25	ASN
1	A	65	ASN
1	A	117	GLN
1	B	49	GLN
1	B	114	ASN
1	B	116	ASN
1	B	128	GLN
1	B	164	ASN
1	C	20	GLN
1	C	118	HIS
1	C	128	GLN

5.3.3 RNA ⓘ

There are no RNA molecules in this entry.

5.4 Non-standard residues in protein, DNA, RNA chains ⓘ

There are no non-standard protein/DNA/RNA residues in this entry.

5.5 Carbohydrates ⓘ

There are no carbohydrates in this entry.

5.6 Ligand geometry ⓘ

Of 14 ligands modelled in this entry, 3 are monoatomic - leaving 11 for Mogul analysis.

In the following table, the Counts columns list the number of bonds (or angles) for which Mogul statistics could be retrieved, the number of bonds (or angles) that are observed in the model and the number of bonds (or angles) that are defined in the chemical component dictionary. The Link column lists molecule types, if any, to which the group is linked. The Z score for a bond length (or angle) is the number of standard deviations the observed value is removed from the expected value. A bond length (or angle) with $|Z| > 2$ is considered an outlier worth inspection. RMSZ is the root-mean-square of all Z scores of the bond lengths (or angles).

Mol	Type	Chain	Res	Link	Bond lengths			Bond angles		
					Counts	RMSZ	$\# Z > 2$	Counts	RMSZ	$\# Z > 2$
4	DBH	A	201	2	8,11,11	3.16	2 (25%)	11,15,15	1.45	2 (18%)
4	DBH	A	202	2	8,11,11	2.59	3 (37%)	11,15,15	1.45	1 (9%)
5	DBS	A	203	2	14,17,17	2.19	3 (21%)	18,23,23	1.73	4 (22%)
3	SO4	A	230	-	4,4,4	0.34	0	6,6,6	0.16	0
4	DBH	B	301	2,4	8,11,11	2.80	3 (37%)	11,15,15	1.51	2 (18%)
4	DBH	B	302	2,4	8,11,11	2.75	3 (37%)	11,15,15	1.59	2 (18%)
5	DBS	B	303	2	14,17,17	2.13	3 (21%)	18,23,23	1.36	2 (11%)
3	SO4	C	330	-	4,4,4	0.24	0	6,6,6	0.09	0
4	DBH	C	401	2	8,11,11	2.73	3 (37%)	11,15,15	1.57	4 (36%)
5	DBS	C	403	2	14,17,17	2.36	5 (35%)	18,23,23	1.89	6 (33%)
3	SO4	C	430	-	4,4,4	0.30	0	6,6,6	0.31	0

In the following table, the Chirals column lists the number of chiral outliers, the number of chiral centers analysed, the number of these observed in the model and the number defined in the chemical component dictionary. Similar counts are reported in the Torsion and Rings columns. '-' means no outliers of that kind were identified.

Mol	Type	Chain	Res	Link	Chirals	Torsions	Rings
4	DBH	A	201	2	-	0/0/4/4	0/1/1/1
4	DBH	A	202	2	-	0/0/4/4	0/1/1/1

Continued on next page...

Continued from previous page...

Mol	Type	Chain	Res	Link	Chirals	Torsions	Rings
5	DBS	A	203	2	-	0/10/14/14	0/1/1/1
3	SO4	A	230	-	-	0/0/0/0	0/0/0/0
4	DBH	B	301	2,4	-	0/0/4/4	0/1/1/1
4	DBH	B	302	2,4	-	0/0/4/4	0/1/1/1
5	DBS	B	303	2	-	0/10/14/14	0/1/1/1
3	SO4	C	330	-	-	0/0/0/0	0/0/0/0
4	DBH	C	401	2	-	0/0/4/4	0/1/1/1
5	DBS	C	403	2	-	0/10/14/14	0/1/1/1
3	SO4	C	430	-	-	0/0/0/0	0/0/0/0

All (25) bond length outliers are listed below:

Mol	Chain	Res	Type	Atoms	Z	Observed(Å)	Ideal(Å)
4	B	301	DBH	O6-C6	-3.51	1.29	1.36
4	B	302	DBH	O3-C3	-2.72	1.30	1.37
4	C	401	DBH	O3-C3	-2.07	1.32	1.37
5	C	403	DBS	C10-C7	2.00	1.43	1.38
5	A	203	DBS	C13-C16	2.03	1.43	1.39
4	A	202	DBH	C9-C6	2.07	1.43	1.39
5	A	203	DBS	C22-N1	2.10	1.49	1.46
5	B	303	DBS	C19-N1	2.11	1.39	1.34
5	C	403	DBS	C7-C4	2.26	1.43	1.39
5	B	303	DBS	C16-C1	2.26	1.45	1.41
5	C	403	DBS	C16-C1	3.11	1.46	1.41
5	C	403	DBS	C13-C16	3.70	1.46	1.39
4	A	202	DBH	C6-C3	3.96	1.44	1.39
4	C	401	DBH	C15-C18	4.18	1.47	1.39
4	B	302	DBH	C15-C18	4.40	1.47	1.39
4	B	301	DBH	C15-C18	4.78	1.48	1.39
4	A	201	DBH	C15-C18	4.81	1.48	1.39
4	B	301	DBH	C6-C3	4.98	1.45	1.39
4	C	401	DBH	C6-C3	5.26	1.46	1.39
4	B	302	DBH	C6-C3	5.48	1.46	1.39
4	A	202	DBH	C15-C18	5.52	1.49	1.39
5	C	403	DBS	C4-C1	6.39	1.47	1.39
5	B	303	DBS	C4-C1	6.55	1.47	1.39
5	A	203	DBS	C4-C1	6.81	1.47	1.39
4	A	201	DBH	C6-C3	6.89	1.47	1.39

All (23) bond angle outliers are listed below:

Mol	Chain	Res	Type	Atoms	Z	Observed(°)	Ideal(°)
5	C	403	DBS	C28-C22-N1	-4.08	103.71	109.35
5	C	403	DBS	C16-C1-C4	-3.62	117.77	120.14
4	A	201	DBH	C15-C18-C3	-2.57	115.78	118.04
4	C	401	DBH	C15-C18-C3	-2.51	115.83	118.04
4	B	302	DBH	C15-C18-C3	-2.40	115.92	118.04
4	C	401	DBH	O3-C3-C6	-2.19	114.08	119.63
5	C	403	DBS	O4-C4-C1	-2.03	112.62	117.91
4	C	401	DBH	O6-C6-C9	2.01	124.88	119.35
5	C	403	DBS	C13-C16-C1	2.07	120.91	118.70
4	B	301	DBH	O3-C3-C18	2.09	124.49	119.15
4	A	202	DBH	O3-C3-C18	2.11	124.55	119.15
4	C	401	DBH	O3-C3-C18	2.12	124.57	119.15
4	A	201	DBH	O3-C3-C18	2.16	124.66	119.15
5	C	403	DBS	O1-C1-C16	2.27	125.10	121.00
5	B	303	DBS	O1-C1-C16	2.55	125.62	121.00
4	B	301	DBH	C9-C6-C3	2.56	122.36	120.09
5	A	203	DBS	C16-C19-N1	2.73	121.98	116.88
5	A	203	DBS	O1-C1-C16	2.75	125.97	121.00
5	A	203	DBS	O13-C28-C22	2.88	117.29	111.61
5	A	203	DBS	O4-C4-C7	2.92	127.37	119.35
4	B	302	DBH	C18-C3-C6	2.95	122.03	120.16
5	B	303	DBS	O4-C4-C7	3.14	127.97	119.35
5	C	403	DBS	O4-C4-C7	3.33	128.49	119.35

There are no chirality outliers.

There are no torsion outliers.

There are no ring outliers.

3 monomers are involved in 7 short contacts:

Mol	Chain	Res	Type	Clashes	Symm-Clashes
4	A	201	DBH	1	0
4	A	202	DBH	4	0
5	C	403	DBS	2	0

5.7 Other polymers [i](#)

There are no such residues in this entry.

5.8 Polymer linkage issues [i](#)

There are no chain breaks in this entry.

6 Fit of model and data [i](#)

6.1 Protein, DNA and RNA chains [i](#)

EDS was not executed - this section will therefore be empty.

6.2 Non-standard residues in protein, DNA, RNA chains [i](#)

EDS was not executed - this section will therefore be empty.

6.3 Carbohydrates [i](#)

EDS was not executed - this section will therefore be empty.

6.4 Ligands [i](#)

EDS was not executed - this section will therefore be empty.

6.5 Other polymers [i](#)

EDS was not executed - this section will therefore be empty.