



Full wwPDB X-ray Structure Validation Report ⓘ

Feb 1, 2016 – 06:20 PM GMT

PDB ID : 4LCH
Title : Crystal structure of the Pseudomonas aeruginosa LPXC/LPC-051 complex
Authors : Lee, C.-J.; Zhou, P.
Deposited on : 2013-06-21
Resolution : 1.60 Å(reported)

This is a Full wwPDB X-ray Structure Validation Report for a publicly released PDB entry.
We welcome your comments at validation@mail.wwpdb.org
A user guide is available at
<http://wwpdb.org/validation/2016/XrayValidationReportHelp>
with specific help available everywhere you see the ⓘ symbol.

The following versions of software and data (see [references ⓘ](#)) were used in the production of this report:

MolProbity : 4.02b-467
Mogul : 1.7 (RC4), CSD as536be (2015)
Xtriage (Phenix) : 1.9-1692
EDS : rb-20026688
Percentile statistics : 20151230.v01 (using entries in the PDB archive December 30th 2015)
Refmac : 5.8.0135
CCP4 : 6.5.0
Ideal geometry (proteins) : Engh & Huber (2001)
Ideal geometry (DNA, RNA) : Parkinson et al. (1996)
Validation Pipeline (wwPDB-VP) : trunk26865

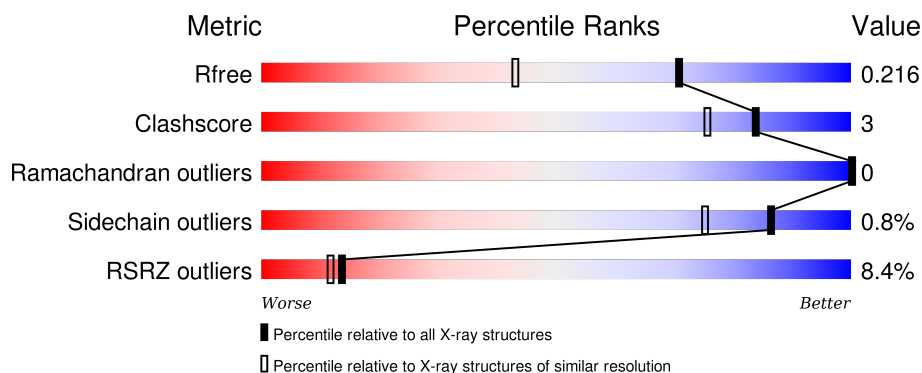
1 Overall quality at a glance

The following experimental techniques were used to determine the structure:

X-RAY DIFFRACTION

The reported resolution of this entry is 1.60 Å.

Percentile scores (ranging between 0-100) for global validation metrics of the entry are shown in the following graphic. The table shows the number of entries on which the scores are based.



Metric	Whole archive (#Entries)	Similar resolution (#Entries, resolution range(Å))
R_{free}	91344	2475 (1.60-1.60)
Clashscore	102246	2732 (1.60-1.60)
Ramachandran outliers	100387	2654 (1.60-1.60)
Sidechain outliers	100360	2653 (1.60-1.60)
RSRZ outliers	91569	2479 (1.60-1.60)

The table below summarises the geometric issues observed across the polymeric chains and their fit to the electron density. The red, orange, yellow and green segments on the lower bar indicate the fraction of residues that contain outliers for ≥ 3 , 2, 1 and 0 types of geometric quality criteria. A grey segment represents the fraction of residues that are not modelled. The numeric value for each fraction is indicated below the corresponding segment, with a dot representing fractions $\leq 5\%$. The upper red bar (where present) indicates the fraction of residues that have poor fit to the electron density. The numeric value is given above the bar.

Mol	Chain	Length	Quality of chain
1	A	299	<div> <div>8%</div> <div>93%</div> <div>6%</div> </div>

The following table lists non-polymeric compounds, carbohydrate monomers and non-standard residues in protein, DNA, RNA chains that are outliers for geometric or electron-density-fit criteria:

Mol	Type	Chain	Res	Chirality	Geometry	Clashes	Electron density
4	NO3	A	305	-	X	-	-

Continued on next page...

Continued from previous page...

Mol	Type	Chain	Res	Chirality	Geometry	Clashes	Electron density
4	NO3	A	306	-	X	-	-
4	NO3	A	307	-	X	-	-
4	NO3	A	308	-	X	-	-
4	NO3	A	309	-	X	-	-
4	NO3	A	310	-	X	-	-
4	NO3	A	311	-	X	-	-
4	NO3	A	312	-	X	-	-
4	NO3	A	313	-	X	-	-
4	NO3	A	314	-	X	-	-
4	NO3	A	315	-	X	-	-
4	NO3	A	316	-	X	-	X
4	NO3	A	317	-	X	-	-
4	NO3	A	318	-	X	-	-
4	NO3	A	319	-	X	-	-
4	NO3	A	320	-	X	-	-

2 Entry composition

There are 5 unique types of molecules in this entry. The entry contains 2755 atoms, of which 0 are hydrogens and 0 are deuteriums.

In the tables below, the ZeroOcc column contains the number of atoms modelled with zero occupancy, the AltConf column contains the number of residues with at least one atom in alternate conformation and the Trace column contains the number of residues modelled with at most 2 atoms.

- Molecule 1 is a protein called UDP-3-O-[3-hydroxymyristoyl] N-acetylglucosamine deacetylase.

Mol	Chain	Residues	Atoms					ZeroOcc	AltConf	Trace
1	A	296	Total	C	N	O	S	6	3	0
			2321	1474	396	446	5			

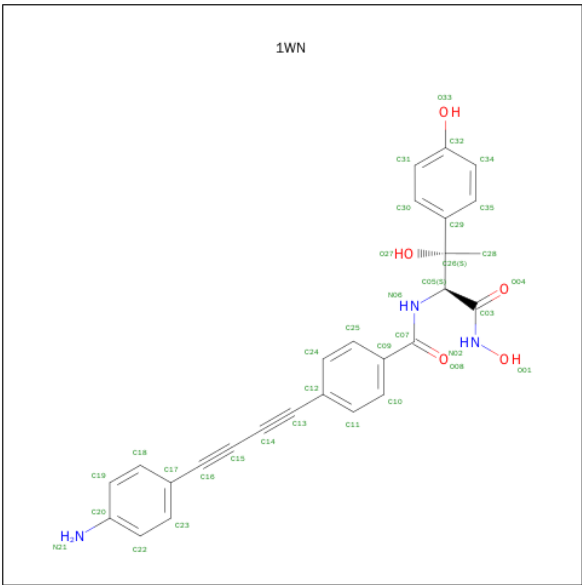
There is a discrepancy between the modelled and reference sequences:

Chain	Residue	Modelled	Actual	Comment	Reference
A	40	SER	CYS	ENGINEERED MUTATION	UNP P47205

- Molecule 2 is ZINC ION (three-letter code: ZN) (formula: Zn).

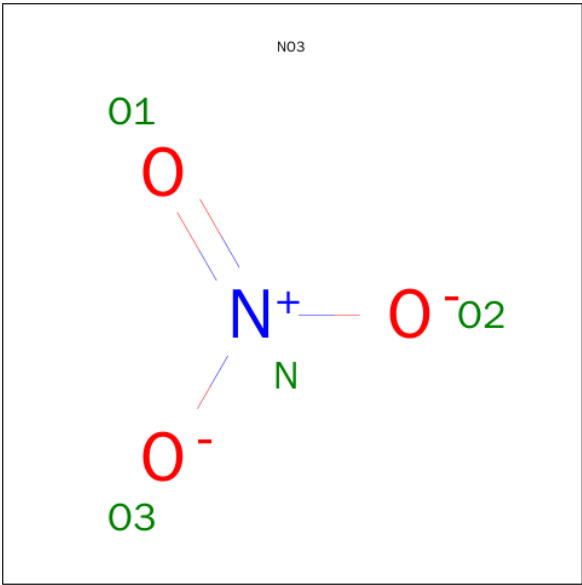
Mol	Chain	Residues	Atoms		ZeroOcc	AltConf
2	A	3	Total	Zn	0	0
			3	3		

- Molecule 3 is (BETAS)-NALPHA-{4-[4-(4-AMINOPHENYL)BUTA-1,3-DIYN-1-YL]BENZOYL}-N,BETA-DIHYDROXY-BETA-METHYL-L-TYROSINAMIDE (three-letter code: 1WN) (formula: C₂₇H₂₃N₃O₅).



Mol	Chain	Residues	Atoms				ZeroOcc	AltConf
3	A	1	Total	C	N	O	0	0
			35	27	3	5		

- Molecule 4 is NITRATE ION (three-letter code: NO3) (formula: NO₃).



Mol	Chain	Residues	Atoms			ZeroOcc	AltConf
4	A	1	Total	N	O	0	0
			4	1	3		
4	A	1	Total	N	O	0	0
			4	1	3		
4	A	1	Total	N	O	0	0
			4	1	3		

Continued on next page...

Continued from previous page...

Mol	Chain	Residues	Atoms			ZeroOcc	AltConf
4	A	1	Total	N	O	0	0
			4	1	3		
4	A	1	Total	N	O	0	0
			4	1	3		
4	A	1	Total	N	O	0	0
			4	1	3		
4	A	1	Total	N	O	0	0
			4	1	3		
4	A	1	Total	N	O	0	0
			4	1	3		
4	A	1	Total	N	O	0	0
			4	1	3		
4	A	1	Total	N	O	0	0
			4	1	3		
4	A	1	Total	N	O	0	0
			4	1	3		
4	A	1	Total	N	O	0	0
			4	1	3		
4	A	1	Total	N	O	0	0
			4	1	3		

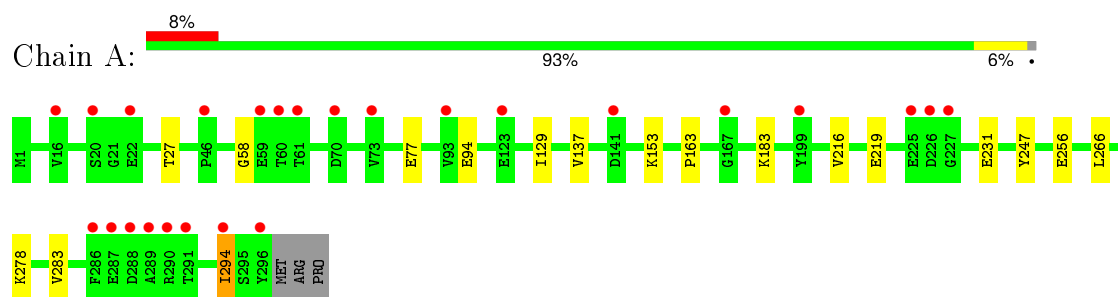
- Molecule 5 is water.

Mol	Chain	Residues	Atoms		ZeroOcc	AltConf
5	A	332	Total	O	0	0
			332	332		

3 Residue-property plots [i](#)

These plots are drawn for all protein, RNA and DNA chains in the entry. The first graphic for a chain summarises the proportions of errors displayed in the second graphic. The second graphic shows the sequence view annotated by issues in geometry and electron density. Residues are color-coded according to the number of geometric quality criteria for which they contain at least one outlier: green = 0, yellow = 1, orange = 2 and red = 3 or more. A red dot above a residue indicates a poor fit to the electron density ($RSRZ > 2$). Stretches of 2 or more consecutive residues without any outlier are shown as a green connector. Residues present in the sample, but not in the model, are shown in grey.

- Molecule 1: UDP-3-O-[3-hydroxymyristoyl] N-acetylglucosamine deacetylase



4 Data and refinement statistics

Property	Value	Source
Space group	P 21 21 21	Depositor
Cell constants a, b, c, α , β , γ	53.20Å 73.53Å 88.04Å 90.00° 90.00° 90.00°	Depositor
Resolution (Å)	19.86 – 1.60 19.86 – 1.60	Depositor EDS
% Data completeness (in resolution range)	97.0 (19.86-1.60) 92.2 (19.86-1.60)	Depositor EDS
R_{merge}	(Not available)	Depositor
R_{sym}	(Not available)	Depositor
$\langle I/\sigma(I) \rangle$ ¹	2.11 (at 1.60Å)	Xtriage
Refinement program	PHENIX (phenix.refine: 1.8_1069)	Depositor
R, R_{free}	0.180 , 0.215 0.188 , 0.216	Depositor DCC
R_{free} test set	2280 reflections (5.59%)	DCC
Wilson B-factor (Å ²)	23.8	Xtriage
Anisotropy	0.520	Xtriage
Bulk solvent k_{sol} (e/Å ³), B_{sol} (Å ²)	0.37 , 43.1	EDS
Estimated twinning fraction	No twinning to report.	Xtriage
L-test for twinning ²	$\langle L \rangle = 0.50$, $\langle L^2 \rangle = 0.33$	Xtriage
Outliers	0 of 45208 reflections	Xtriage
F_o, F_c correlation	0.96	EDS
Total number of atoms	2755	wwPDB-VP
Average B, all atoms (Å ²)	26.0	wwPDB-VP

Xtriage's analysis on translational NCS is as follows: *The largest off-origin peak in the Patterson function is 5.99% of the height of the origin peak. No significant pseudotranslation is detected.*

¹Intensities estimated from amplitudes.

²Theoretical values of $\langle |L| \rangle$, $\langle L^2 \rangle$ for acentric reflections are 0.5, 0.375 respectively for untwinned datasets, and 0.333, 0.2 for perfectly twinned datasets.

5 Model quality

5.1 Standard geometry

Bond lengths and bond angles in the following residue types are not validated in this section: 1WN, ZN, NO3

The Z score for a bond length (or angle) is the number of standard deviations the observed value is removed from the expected value. A bond length (or angle) with $|Z| > 5$ is considered an outlier worth inspection. RMSZ is the root-mean-square of all Z scores of the bond lengths (or angles).

Mol	Chain	Bond lengths		Bond angles	
		RMSZ	$\# Z > 5$	RMSZ	$\# Z > 5$
1	A	0.44	0/2368	0.64	0/3200

There are no bond length outliers.

There are no bond angle outliers.

There are no chirality outliers.

There are no planarity outliers.

5.2 Too-close contacts

In the following table, the Non-H and H(model) columns list the number of non-hydrogen atoms and hydrogen atoms in the chain respectively. The H(added) column lists the number of hydrogen atoms added and optimized by MolProbity. The Clashes column lists the number of clashes within the asymmetric unit, whereas Symm-Clashes lists symmetry related clashes.

Mol	Chain	Non-H	H(model)	H(added)	Clashes	Symm-Clashes
1	A	2321	0	2331	12	0
2	A	3	0	0	0	0
3	A	35	0	21	3	0
4	A	64	0	0	2	0
5	A	332	0	0	4	0
All	All	2755	0	2352	14	0

The all-atom clashscore is defined as the number of clashes found per 1000 atoms (including hydrogen atoms). The all-atom clashscore for this structure is 3.

All (14) close contacts within the same asymmetric unit are listed below, sorted by their clash magnitude.

Atom-1	Atom-2	Interatomic distance (Å)	Clash overlap (Å)
1:A:163:PRO:HD2	1:A:219:GLU:HG3	1.65	0.77
1:A:216:VAL:HG21	3:A:304:1WN:H7	1.68	0.75
1:A:183:LYS:NZ	5:A:583:HOH:O	2.46	0.49
1:A:77:GLU:OE2	3:A:304:1WN:O01	2.31	0.48
1:A:58:GLY:O	5:A:522:HOH:O	2.19	0.48
1:A:231:GLU:HB3	4:A:311:NO3:O3	2.15	0.47
4:A:316:NO3:O2	5:A:704:HOH:O	2.21	0.45
3:A:304:1WN:O04	3:A:304:1WN:H17	2.16	0.45
1:A:278:LYS:O	5:A:628:HOH:O	2.21	0.44
1:A:294:ILE:H	1:A:294:ILE:HD13	1.82	0.44
1:A:137:VAL:HG23	1:A:266:LEU:HD22	2.01	0.43
1:A:27:THR:HB	1:A:94:GLU:HB2	2.01	0.42
1:A:153:LYS:O	1:A:256:GLU:HA	2.19	0.41
1:A:129:ILE:HD13	1:A:283:VAL:HG22	2.03	0.41

There are no symmetry-related clashes.

5.3 Torsion angles [i](#)

5.3.1 Protein backbone [i](#)

In the following table, the Percentiles column shows the percent Ramachandran outliers of the chain as a percentile score with respect to all X-ray entries followed by that with respect to entries of similar resolution.

The Analysed column shows the number of residues for which the backbone conformation was analysed, and the total number of residues.

Mol	Chain	Analysed	Favoured	Allowed	Outliers	Percentiles	
1	A	297/299 (99%)	289 (97%)	8 (3%)	0	100	100

There are no Ramachandran outliers to report.

5.3.2 Protein sidechains [i](#)

In the following table, the Percentiles column shows the percent sidechain outliers of the chain as a percentile score with respect to all X-ray entries followed by that with respect to entries of similar resolution.

The Analysed column shows the number of residues for which the sidechain conformation was analysed, and the total number of residues.

Mol	Chain	Analysed	Rotameric	Outliers	Percentiles
1	A	253/253 (100%)	251 (99%)	2 (1%)	86 75

All (2) residues with a non-rotameric sidechain are listed below:

Mol	Chain	Res	Type
1	A	247	TYR
1	A	294	ILE

Some sidechains can be flipped to improve hydrogen bonding and reduce clashes. There are no such sidechains identified.

5.3.3 RNA ⓘ

There are no RNA molecules in this entry.

5.4 Non-standard residues in protein, DNA, RNA chains ⓘ

There are no non-standard protein/DNA/RNA residues in this entry.

5.5 Carbohydrates ⓘ

There are no carbohydrates in this entry.

5.6 Ligand geometry ⓘ

Of 20 ligands modelled in this entry, 3 are monoatomic - leaving 17 for Mogul analysis.

In the following table, the Counts columns list the number of bonds (or angles) for which Mogul statistics could be retrieved, the number of bonds (or angles) that are observed in the model and the number of bonds (or angles) that are defined in the chemical component dictionary. The Link column lists molecule types, if any, to which the group is linked. The Z score for a bond length (or angle) is the number of standard deviations the observed value is removed from the expected value. A bond length (or angle) with $|Z| > 2$ is considered an outlier worth inspection. RMSZ is the root-mean-square of all Z scores of the bond lengths (or angles).

Mol	Type	Chain	Res	Link	Bond lengths			Bond angles		
					Counts	RMSZ	$\# Z > 2$	Counts	RMSZ	$\# Z > 2$
3	1WN	A	304	2	35,37,37	2.61	12 (34%)	45,51,51	1.83	15 (33%)
4	NO3	A	305	-	3,3,3	2.67	3 (100%)	3,3,3	0.43	0
4	NO3	A	306	-	3,3,3	3.00	3 (100%)	3,3,3	0.09	0

Mol	Type	Chain	Res	Link	Bond lengths			Bond angles		
					Counts	RMSZ	# Z > 2	Counts	RMSZ	# Z > 2
4	NO3	A	307	-	3,3,3	3.30	3 (100%)	3,3,3	0.19	0
4	NO3	A	308	-	3,3,3	2.99	3 (100%)	3,3,3	0.48	0
4	NO3	A	309	-	3,3,3	2.91	3 (100%)	3,3,3	0.19	0
4	NO3	A	310	-	3,3,3	3.06	3 (100%)	3,3,3	0.18	0
4	NO3	A	311	-	3,3,3	3.21	3 (100%)	3,3,3	0.20	0
4	NO3	A	312	-	3,3,3	2.99	3 (100%)	3,3,3	0.27	0
4	NO3	A	313	-	3,3,3	3.14	3 (100%)	3,3,3	0.20	0
4	NO3	A	314	-	3,3,3	3.24	3 (100%)	3,3,3	0.13	0
4	NO3	A	315	-	3,3,3	3.19	3 (100%)	3,3,3	0.24	0
4	NO3	A	316	-	3,3,3	3.36	3 (100%)	3,3,3	0.09	0
4	NO3	A	317	-	3,3,3	3.24	3 (100%)	3,3,3	0.19	0
4	NO3	A	318	-	3,3,3	3.32	3 (100%)	3,3,3	0.12	0
4	NO3	A	319	-	3,3,3	3.33	3 (100%)	3,3,3	0.15	0
4	NO3	A	320	-	3,3,3	3.23	3 (100%)	3,3,3	0.12	0

In the following table, the Chirals column lists the number of chiral outliers, the number of chiral centers analysed, the number of these observed in the model and the number defined in the chemical component dictionary. Similar counts are reported in the Torsion and Rings columns. '-' means no outliers of that kind were identified.

Mol	Type	Chain	Res	Link	Chirals	Torsions	Rings
3	1WN	A	304	2	-	0/33/33/33	0/3/3/3
4	NO3	A	305	-	-	0/0/0/0	0/0/0/0
4	NO3	A	306	-	-	0/0/0/0	0/0/0/0
4	NO3	A	307	-	-	0/0/0/0	0/0/0/0
4	NO3	A	308	-	-	0/0/0/0	0/0/0/0
4	NO3	A	309	-	-	0/0/0/0	0/0/0/0
4	NO3	A	310	-	-	0/0/0/0	0/0/0/0
4	NO3	A	311	-	-	0/0/0/0	0/0/0/0
4	NO3	A	312	-	-	0/0/0/0	0/0/0/0
4	NO3	A	313	-	-	0/0/0/0	0/0/0/0
4	NO3	A	314	-	-	0/0/0/0	0/0/0/0
4	NO3	A	315	-	-	0/0/0/0	0/0/0/0
4	NO3	A	316	-	-	0/0/0/0	0/0/0/0
4	NO3	A	317	-	-	0/0/0/0	0/0/0/0
4	NO3	A	318	-	-	0/0/0/0	0/0/0/0
4	NO3	A	319	-	-	0/0/0/0	0/0/0/0
4	NO3	A	320	-	-	0/0/0/0	0/0/0/0

All (60) bond length outliers are listed below:

Mol	Chain	Res	Type	Atoms	Z	Observed(Å)	Ideal(Å)
3	A	304	1WN	O01-N02	-6.78	1.27	1.39
3	A	304	1WN	O27-C26	-6.17	1.34	1.43
3	A	304	1WN	C28-C26	-5.93	1.47	1.53
3	A	304	1WN	C26-C29	-5.92	1.48	1.53
3	A	304	1WN	C16-C15	-3.01	1.15	1.20
3	A	304	1WN	O08-C07	-2.08	1.19	1.23
3	A	304	1WN	O04-C03	-2.07	1.19	1.23
3	A	304	1WN	C35-C29	2.32	1.42	1.39
4	A	305	NO3	O2-N	2.32	1.37	1.25
4	A	305	NO3	O3-N	2.46	1.38	1.25
3	A	304	1WN	C34-C32	2.46	1.43	1.38
4	A	312	NO3	O2-N	2.46	1.38	1.25
4	A	309	NO3	O2-N	2.51	1.38	1.25
4	A	307	NO3	O3-N	2.58	1.38	1.25
4	A	312	NO3	O3-N	2.63	1.38	1.25
4	A	313	NO3	O3-N	2.63	1.38	1.25
4	A	308	NO3	O2-N	2.64	1.38	1.25
4	A	310	NO3	O2-N	2.66	1.39	1.25
4	A	310	NO3	O3-N	2.66	1.39	1.25
4	A	315	NO3	O2-N	2.66	1.39	1.25
4	A	306	NO3	O2-N	2.72	1.39	1.25
4	A	311	NO3	O3-N	2.75	1.39	1.25
4	A	309	NO3	O3-N	2.75	1.39	1.25
4	A	306	NO3	O3-N	2.76	1.39	1.25
4	A	317	NO3	O2-N	2.84	1.40	1.25
4	A	308	NO3	O3-N	2.84	1.40	1.25
3	A	304	1WN	C30-C29	2.85	1.43	1.39
4	A	307	NO3	O2-N	2.86	1.40	1.25
4	A	320	NO3	O3-N	2.86	1.40	1.25
4	A	320	NO3	O2-N	2.88	1.40	1.25
4	A	314	NO3	O2-N	2.89	1.40	1.25
4	A	313	NO3	O2-N	2.89	1.40	1.25
4	A	315	NO3	O3-N	2.90	1.40	1.25
4	A	314	NO3	O3-N	2.91	1.40	1.25
4	A	319	NO3	O2-N	2.93	1.40	1.25
4	A	317	NO3	O3-N	2.94	1.40	1.25
4	A	316	NO3	O3-N	2.95	1.40	1.25
4	A	311	NO3	O2-N	2.95	1.40	1.25
4	A	318	NO3	O3-N	2.95	1.40	1.25
4	A	318	NO3	O2-N	2.97	1.40	1.25
4	A	319	NO3	O3-N	3.00	1.40	1.25
4	A	316	NO3	O2-N	3.00	1.40	1.25

Continued on next page...

Continued from previous page...

Mol	Chain	Res	Type	Atoms	Z	Observed(Å)	Ideal(Å)
4	A	305	NO3	O1-N	3.16	1.37	1.24
4	A	309	NO3	O1-N	3.40	1.38	1.24
4	A	308	NO3	O1-N	3.42	1.38	1.24
4	A	306	NO3	O1-N	3.47	1.38	1.24
4	A	312	NO3	O1-N	3.72	1.39	1.24
4	A	310	NO3	O1-N	3.75	1.39	1.24
4	A	313	NO3	O1-N	3.78	1.39	1.24
4	A	311	NO3	O1-N	3.82	1.40	1.24
4	A	314	NO3	O1-N	3.83	1.40	1.24
4	A	320	NO3	O1-N	3.84	1.40	1.24
4	A	317	NO3	O1-N	3.84	1.40	1.24
4	A	315	NO3	O1-N	3.88	1.40	1.24
4	A	318	NO3	O1-N	3.94	1.40	1.24
4	A	319	NO3	O1-N	3.96	1.40	1.24
3	A	304	1WN	C15-C14	3.99	1.46	1.37
4	A	316	NO3	O1-N	4.01	1.40	1.24
4	A	307	NO3	O1-N	4.21	1.41	1.24
3	A	304	1WN	C07-N06	4.45	1.44	1.34

All (15) bond angle outliers are listed below:

Mol	Chain	Res	Type	Atoms	Z	Observed(°)	Ideal(°)
3	A	304	1WN	C18-C19-C20	-4.19	114.89	120.66
3	A	304	1WN	C18-C17-C16	-4.18	113.37	120.79
3	A	304	1WN	C11-C12-C13	-3.00	115.47	120.79
3	A	304	1WN	C22-C23-C17	-2.99	116.53	120.36
3	A	304	1WN	C35-C29-C26	-2.83	117.34	121.09
3	A	304	1WN	C30-C31-C32	-2.44	117.04	119.87
3	A	304	1WN	C24-C25-C09	-2.34	118.05	120.76
3	A	304	1WN	O08-C07-C09	-2.23	117.17	120.97
3	A	304	1WN	O27-C26-C28	-2.11	103.57	108.55
3	A	304	1WN	C19-C20-N21	-2.10	116.69	120.90
3	A	304	1WN	C25-C09-C10	2.01	121.58	118.60
3	A	304	1WN	C30-C29-C26	2.08	123.84	121.09
3	A	304	1WN	O01-N02-C03	2.74	123.74	119.86
3	A	304	1WN	C05-C03-N02	2.80	120.16	115.02
3	A	304	1WN	C22-C20-C19	3.12	123.46	118.19

There are no chirality outliers.

There are no torsion outliers.

There are no ring outliers.

3 monomers are involved in 5 short contacts:

Mol	Chain	Res	Type	Clashes	Symm-Clashes
3	A	304	1WN	3	0
4	A	311	NO3	1	0
4	A	316	NO3	1	0

5.7 Other polymers [i](#)

There are no such residues in this entry.

5.8 Polymer linkage issues [i](#)

There are no chain breaks in this entry.

6 Fit of model and data ⓘ

6.1 Protein, DNA and RNA chains ⓘ

In the following table, the column labelled ‘#RSRZ> 2’ contains the number (and percentage) of RSRZ outliers, followed by percent RSRZ outliers for the chain as percentile scores relative to all X-ray entries and entries of similar resolution. The OWAB column contains the minimum, median, 95th percentile and maximum values of the occupancy-weighted average B-factor per residue. The column labelled ‘Q< 0.9’ lists the number of (and percentage) of residues with an average occupancy less than 0.9.

Mol	Chain	Analysed	<RSRZ>	#RSRZ>2	OWAB(Å ²)	Q<0.9
1	A	296/299 (98%)	0.55	25 (8%) 14 12	14, 22, 39, 67	6 (2%)

All (25) RSRZ outliers are listed below:

Mol	Chain	Res	Type	RSRZ
1	A	290	ARG	6.3
1	A	291	THR	6.3
1	A	296	TYR	4.5
1	A	70	ASP	4.3
1	A	288	ASP	4.0
1	A	287	GLU	3.8
1	A	226	ASP	3.6
1	A	141	ASP	3.3
1	A	199	TYR	3.2
1	A	294	ILE	3.1
1	A	227	GLY	2.9
1	A	123	GLU	2.7
1	A	46	PRO	2.7
1	A	289	ALA	2.6
1	A	16	VAL	2.6
1	A	61	THR	2.5
1	A	20	SER	2.4
1	A	59	GLU	2.4
1	A	60	THR	2.3
1	A	167	GLY	2.3
1	A	73	VAL	2.3
1	A	286	PHE	2.2
1	A	93	VAL	2.2
1	A	225	GLU	2.1
1	A	22	GLU	2.1

6.2 Non-standard residues in protein, DNA, RNA chains [i](#)

There are no non-standard protein/DNA/RNA residues in this entry.

6.3 Carbohydrates [i](#)

There are no carbohydrates in this entry.

6.4 Ligands [i](#)

In the following table, the Atoms column lists the number of modelled atoms in the group and the number defined in the chemical component dictionary. LLDF column lists the quality of electron density of the group with respect to its neighbouring residues in protein, DNA or RNA chains. The B-factors column lists the minimum, median, 95th percentile and maximum values of B factors of atoms in the group. The column labelled 'Q< 0.9' lists the number of atoms with occupancy less than 0.9.

Mol	Type	Chain	Res	Atoms	RSCC	RSR	LLDF	B-factors(Å ²)	Q<0.9
4	NO3	A	316	4/4	0.78	0.22	2.26	28,42,48,49	0
3	1WN	A	304	35/35	0.87	0.13	1.68	17,27,34,38	0
4	NO3	A	307	4/4	0.88	0.15	1.31	29,32,33,43	0
4	NO3	A	320	4/4	0.91	0.16	1.18	41,44,45,45	0
4	NO3	A	310	4/4	0.94	0.11	0.17	24,26,32,38	0
4	NO3	A	313	4/4	0.97	0.12	-0.02	29,37,37,49	0
4	NO3	A	314	4/4	0.96	0.13	-0.41	43,45,46,47	0
4	NO3	A	309	4/4	0.97	0.10	-0.75	20,21,22,29	0
4	NO3	A	305	4/4	0.96	0.08	-1.01	19,22,22,25	0
4	NO3	A	308	4/4	0.95	0.07	-1.72	23,25,28,31	0
2	ZN	A	302	1/1	0.99	0.04	-2.34	30,30,30,30	0
2	ZN	A	301	1/1	1.00	0.03	-3.69	16,16,16,16	0
2	ZN	A	303	1/1	0.84	0.05	-	68,68,68,68	0
4	NO3	A	311	4/4	0.96	0.10	-	30,33,34,38	0
4	NO3	A	317	4/4	0.93	0.27	-	50,57,60,61	0
4	NO3	A	312	4/4	0.96	0.11	-	25,26,30,31	0
4	NO3	A	319	4/4	0.81	0.27	-	55,59,60,62	0
4	NO3	A	315	4/4	0.85	0.29	-	48,50,50,52	0
4	NO3	A	306	4/4	0.97	0.07	-	29,30,30,35	0
4	NO3	A	318	4/4	0.66	0.36	-	64,65,66,69	0

6.5 Other polymers [i](#)

There are no such residues in this entry.