



Full wwPDB X-ray Structure Validation Report ⓘ

Feb 1, 2016 – 10:14 AM GMT

PDB ID : 3LDQ
Title : Crystal structure of HSC70/BAG1 in complex with small molecule inhibitor
Authors : Dokurno, P.; Surgenor, A.E.; Shaw, T.; Macias, A.T.; Massey, A.J.;
Williamson, D.S.
Deposited on : 2010-01-13
Resolution : 1.90 Å(reported)

This is a Full wwPDB X-ray Structure Validation Report for a publicly released PDB entry.
We welcome your comments at validation@mail.wwpdb.org
A user guide is available at
<http://wwpdb.org/validation/2016/XrayValidationReportHelp>
with specific help available everywhere you see the ⓘ symbol.

The following versions of software and data (see [references ⓘ](#)) were used in the production of this report:

MolProbity : 4.02b-467
Mogul : 1.7 (RC4), CSD as536be (2015)
Xtriage (Phenix) : 1.9-1692
EDS : rb-20026688
Percentile statistics : 20151230.v01 (using entries in the PDB archive December 30th 2015)
Refmac : 5.8.0135
CCP4 : 6.5.0
Ideal geometry (proteins) : Engh & Huber (2001)
Ideal geometry (DNA, RNA) : Parkinson et al. (1996)
Validation Pipeline (wwPDB-VP) : trunk26865

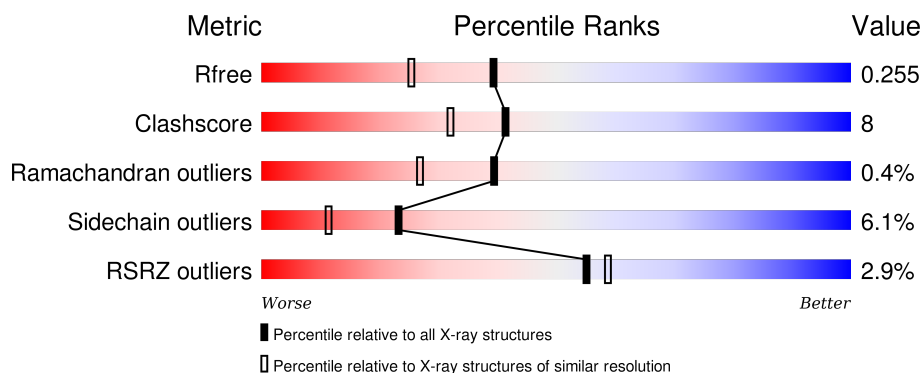
1 Overall quality at a glance

The following experimental techniques were used to determine the structure:

X-RAY DIFFRACTION

The reported resolution of this entry is 1.90 Å.

Percentile scores (ranging between 0-100) for global validation metrics of the entry are shown in the following graphic. The table shows the number of entries on which the scores are based.



Metric	Whole archive (#Entries)	Similar resolution (#Entries, resolution range(Å))
R_{free}	91344	4755 (1.90-1.90)
Clashscore	102246	5398 (1.90-1.90)
Ramachandran outliers	100387	5338 (1.90-1.90)
Sidechain outliers	100360	5339 (1.90-1.90)
RSRZ outliers	91569	4766 (1.90-1.90)

The table below summarises the geometric issues observed across the polymeric chains and their fit to the electron density. The red, orange, yellow and green segments on the lower bar indicate the fraction of residues that contain outliers for ≥ 3 , 2, 1 and 0 types of geometric quality criteria. A grey segment represents the fraction of residues that are not modelled. The numeric value for each fraction is indicated below the corresponding segment, with a dot representing fractions $\leq 5\%$. The upper red bar (where present) indicates the fraction of residues that have poor fit to the electron density. The numeric value is given above the bar.

Mol	Chain	Length	Quality of chain
1	A	381	<div> <div>3%</div> <div>82%</div> <div>14%</div> <div>• •</div> </div>
2	B	114	<div> <div>4%</div> <div>76%</div> <div>18%</div> <div>• • •</div> </div>

2 Entry composition

There are 4 unique types of molecules in this entry. The entry contains 4155 atoms, of which 0 are hydrogens and 0 are deuteriums.

In the tables below, the ZeroOcc column contains the number of atoms modelled with zero occupancy, the AltConf column contains the number of residues with at least one atom in alternate conformation and the Trace column contains the number of residues modelled with at most 2 atoms.

- Molecule 1 is a protein called Heat shock cognate 71 kDa protein.

Mol	Chain	Residues	Atoms					ZeroOcc	AltConf	Trace
1	A	377	Total	C	N	O	S	0	0	0
			2912	1831	511	562	8			

There are 3 discrepancies between the modelled and reference sequences:

Chain	Residue	Modelled	Actual	Comment	Reference
A	1	TYR	-	EXPRESSION TAG	UNP P11142
A	2	PHE	-	EXPRESSION TAG	UNP P11142
A	3	GLN	-	EXPRESSION TAG	UNP P11142

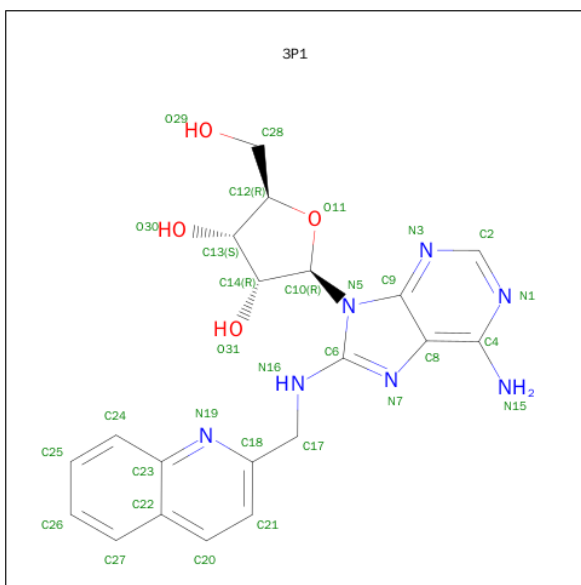
- Molecule 2 is a protein called BAG family molecular chaperone regulator 1.

Mol	Chain	Residues	Atoms					ZeroOcc	AltConf	Trace
2	B	111	Total	C	N	O	S	0	0	0
			878	552	150	172	4			

There is a discrepancy between the modelled and reference sequences:

Chain	Residue	Modelled	Actual	Comment	Reference
B	150	GLY	-	EXPRESSION TAG	UNP Q99933

- Molecule 3 is 8-[(QUINOLIN-2-YLMETHYL)AMINO]ADENOSINE (three-letter code: 3P1) (formula: C₂₀H₂₁N₇O₄).



Mol	Chain	Residues	Atoms				ZeroOcc	AltConf
3	A	1	Total	C	N	O	0	0
			31	20	7	4		

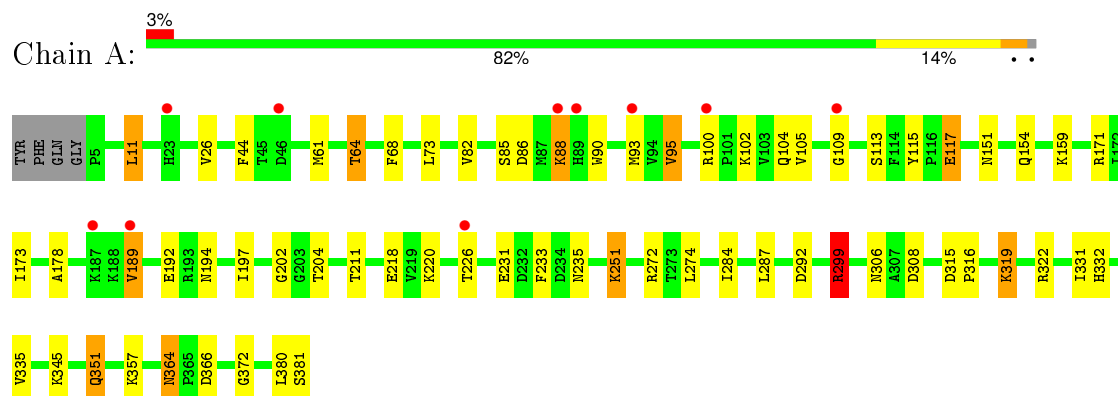
- Molecule 4 is water.

Mol	Chain	Residues	Atoms		ZeroOcc	AltConf
4	A	250	Total	O	0	0
			250	250		
4	B	84	Total	O	0	0
			84	84		

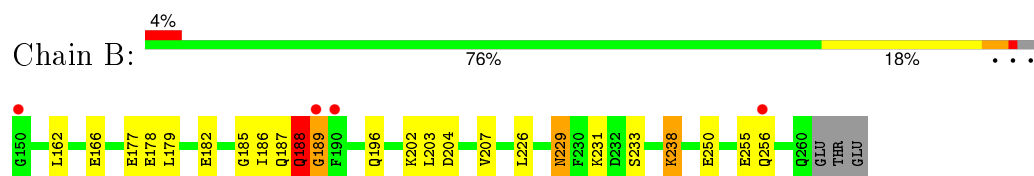
3 Residue-property plots [i](#)

These plots are drawn for all protein, RNA and DNA chains in the entry. The first graphic for a chain summarises the proportions of errors displayed in the second graphic. The second graphic shows the sequence view annotated by issues in geometry and electron density. Residues are color-coded according to the number of geometric quality criteria for which they contain at least one outlier: green = 0, yellow = 1, orange = 2 and red = 3 or more. A red dot above a residue indicates a poor fit to the electron density ($RSRZ > 2$). Stretches of 2 or more consecutive residues without any outlier are shown as a green connector. Residues present in the sample, but not in the model, are shown in grey.

- Molecule 1: Heat shock cognate 71 kDa protein



- Molecule 2: BAG family molecular chaperone regulator 1



4 Data and refinement statistics

Property	Value	Source
Space group	P 1 21 1	Depositor
Cell constants a, b, c, α , β , γ	40.77Å 122.00Å 54.25Å 90.00° 106.88° 90.00°	Depositor
Resolution (Å)	10.00 – 1.90 10.00 – 1.90	Depositor EDS
% Data completeness (in resolution range)	98.1 (10.00-1.90) 98.1 (10.00-1.90)	Depositor EDS
R_{merge}	0.06	Depositor
R_{sym}	(Not available)	Depositor
$\langle I/\sigma(I) \rangle$ ¹	4.97 (at 1.90Å)	Xtriage
Refinement program	REFMAC 5.2.0019	Depositor
R, R_{free}	0.203 , 0.256 0.202 , 0.255	Depositor DCC
R_{free} test set	1955 reflections (5.30%)	DCC
Wilson B-factor (Å ²)	26.0	Xtriage
Anisotropy	0.069	Xtriage
Bulk solvent k_{sol} (e/Å ³), B_{sol} (Å ²)	0.46 , 65.4	EDS
Estimated twinning fraction	No twinning to report.	Xtriage
L-test for twinning ²	$\langle L \rangle = 0.49$, $\langle L^2 \rangle = 0.32$	Xtriage
Outliers	0 of 38855 reflections	Xtriage
F_o, F_c correlation	0.94	EDS
Total number of atoms	4155	wwPDB-VP
Average B, all atoms (Å ²)	30.0	wwPDB-VP

Xtriage's analysis on translational NCS is as follows: *The largest off-origin peak in the Patterson function is 5.60% of the height of the origin peak. No significant pseudotranslation is detected.*

¹Intensities estimated from amplitudes.

²Theoretical values of $\langle |L| \rangle$, $\langle L^2 \rangle$ for acentric reflections are 0.5, 0.375 respectively for untwinned datasets, and 0.333, 0.2 for perfectly twinned datasets.

5 Model quality [i](#)

5.1 Standard geometry [i](#)

Bond lengths and bond angles in the following residue types are not validated in this section: 3P1

The Z score for a bond length (or angle) is the number of standard deviations the observed value is removed from the expected value. A bond length (or angle) with $|Z| > 5$ is considered an outlier worth inspection. RMSZ is the root-mean-square of all Z scores of the bond lengths (or angles).

Mol	Chain	Bond lengths		Bond angles	
		RMSZ	# $ Z > 5$	RMSZ	# $ Z > 5$
1	A	0.77	0/2957	0.81	5/3994 (0.1%)
2	B	0.74	0/884	0.69	0/1184
All	All	0.76	0/3841	0.79	5/5178 (0.1%)

There are no bond length outliers.

All (5) bond angle outliers are listed below:

Mol	Chain	Res	Type	Atoms	Z	Observed(°)	Ideal(°)
1	A	272	ARG	NE-CZ-NH2	-11.66	114.47	120.30
1	A	299	ARG	NE-CZ-NH2	-9.26	115.67	120.30
1	A	272	ARG	NE-CZ-NH1	8.27	124.44	120.30
1	A	299	ARG	NE-CZ-NH1	7.52	124.06	120.30
1	A	11	LEU	CB-CG-CD2	5.67	120.64	111.00

There are no chirality outliers.

There are no planarity outliers.

5.2 Too-close contacts [i](#)

In the following table, the Non-H and H(model) columns list the number of non-hydrogen atoms and hydrogen atoms in the chain respectively. The H(added) column lists the number of hydrogen atoms added and optimized by MolProbity. The Clashes column lists the number of clashes within the asymmetric unit, whereas Symm-Clashes lists symmetry related clashes.

Mol	Chain	Non-H	H(model)	H(added)	Clashes	Symm-Clashes
1	A	2912	0	2920	47	0
2	B	878	0	903	19	0
3	A	31	0	21	0	0
4	A	250	0	0	11	0

Continued on next page...

Continued from previous page...

Mol	Chain	Non-H	H(model)	H(added)	Clashes	Symm-Clashes
4	B	84	0	0	5	0
All	All	4155	0	3844	65	0

The all-atom clashscore is defined as the number of clashes found per 1000 atoms (including hydrogen atoms). The all-atom clashscore for this structure is 8.

All (65) close contacts within the same asymmetric unit are listed below, sorted by their clash magnitude.

Atom-1	Atom-2	Interatomic distance (Å)	Clash overlap (Å)
1:A:204:THR:HG22	4:A:632:HOH:O	1.69	0.90
1:A:93:MET:HG2	1:A:104:GLN:HB3	1.58	0.86
1:A:194:ASN:H	1:A:332:HIS:HD2	1.22	0.82
1:A:64:THR:HG22	4:A:586:HOH:O	1.82	0.80
1:A:117:GLU:CD	1:A:117:GLU:H	1.86	0.79
1:A:194:ASN:H	1:A:332:HIS:CD2	2.01	0.77
1:A:235:ASN:HB2	4:A:631:HOH:O	1.87	0.74
1:A:151:ASN:H	1:A:154:GLN:HE21	1.39	0.70
2:B:186:ILE:HD12	2:B:203:LEU:HD11	1.73	0.69
1:A:226:THR:O	4:A:632:HOH:O	2.13	0.67
1:A:115:TYR:HB3	1:A:117:GLU:OE1	1.98	0.63
2:B:188:GLN:HB2	4:B:303:HOH:O	1.98	0.63
1:A:274:LEU:O	1:A:299:ARG:HD2	2.00	0.62
1:A:192:GLU:HG2	1:A:211:THR:CG2	2.30	0.61
2:B:187:GLN:C	2:B:189:GLY:H	2.05	0.60
1:A:351:GLN:HG2	1:A:357:LYS:O	2.02	0.60
2:B:188:GLN:HG3	4:B:304:HOH:O	2.03	0.59
1:A:345:LYS:HE3	4:A:399:HOH:O	2.02	0.59
1:A:292:ASP:OD1	2:B:238:LYS:HE2	2.05	0.57
1:A:151:ASN:H	1:A:154:GLN:NE2	2.03	0.56
1:A:319:LYS:HD3	1:A:322:ARG:HH12	1.71	0.56
1:A:85:SER:O	1:A:88:LYS:HG2	2.07	0.55
2:B:188:GLN:CG	4:B:304:HOH:O	2.54	0.55
2:B:187:GLN:O	2:B:189:GLY:N	2.39	0.55
1:A:202:GLY:O	1:A:231:GLU:HG2	2.09	0.52
1:A:189:VAL:HG22	4:A:559:HOH:O	2.09	0.52
1:A:251:LYS:HE3	1:A:251:LYS:HA	1.91	0.52
2:B:188:GLN:O	2:B:188:GLN:HG2	2.10	0.51
2:B:229:ASN:H	2:B:229:ASN:ND2	2.07	0.51
2:B:226:LEU:HD13	2:B:233:SER:HB3	1.93	0.51
1:A:233:PHE:HA	1:A:306:ASN:HD21	1.76	0.51
1:A:192:GLU:OE2	1:A:211:THR:HG21	2.11	0.50

Continued on next page...

Continued from previous page...

Atom-1	Atom-2	Interatomic distance (Å)	Clash overlap (Å)
1:A:68:PHE:HB2	4:A:535:HOH:O	2.11	0.50
1:A:86:ASP:HB3	1:A:90:TRP:CZ2	2.47	0.49
1:A:44:PHE:CD1	1:A:105:VAL:HG21	2.47	0.49
1:A:218:GLU:HG3	4:A:570:HOH:O	2.12	0.49
2:B:178:GLU:O	2:B:182:GLU:HG3	2.12	0.49
1:A:364:ASN:HD22	1:A:364:ASN:C	2.16	0.48
1:A:274:LEU:O	1:A:299:ARG:CD	2.61	0.48
1:A:109:GLY:HA3	4:A:550:HOH:O	2.14	0.48
2:B:188:GLN:O	2:B:188:GLN:CG	2.63	0.47
1:A:95:VAL:HG12	1:A:102:LYS:HB2	1.97	0.46
1:A:197:ILE:HD13	1:A:335:VAL:HB	1.97	0.46
1:A:364:ASN:HD22	1:A:366:ASP:H	1.61	0.46
2:B:202:LYS:NZ	4:B:40:HOH:O	2.48	0.46
1:A:331:ILE:O	1:A:357:LYS:HE3	2.17	0.45
1:A:82:VAL:HG12	4:A:617:HOH:O	2.18	0.44
1:A:345:LYS:HA	1:A:345:LYS:HD2	1.85	0.44
2:B:187:GLN:C	2:B:189:GLY:N	2.71	0.44
1:A:315:ASP:HB3	1:A:316:PRO:HD3	2.00	0.44
1:A:192:GLU:CG	1:A:211:THR:CG2	2.96	0.43
2:B:204:ASP:O	2:B:207:VAL:HG12	2.17	0.43
2:B:162:LEU:O	2:B:166:GLU:HG3	2.18	0.43
2:B:231:LYS:CB	4:B:285:HOH:O	2.67	0.43
2:B:185:GLY:O	2:B:188:GLN:NE2	2.52	0.43
1:A:192:GLU:HG2	1:A:211:THR:HG23	1.98	0.42
1:A:159:LYS:HE2	4:A:537:HOH:O	2.18	0.42
1:A:171:ARG:HG2	1:A:173:ILE:HG22	2.00	0.42
1:A:284:ILE:HG21	1:A:287:LEU:HD13	2.01	0.41
1:A:73:LEU:HD21	1:A:90:TRP:CZ3	2.56	0.41
1:A:178:ALA:O	1:A:372:GLY:HA3	2.20	0.41
1:A:192:GLU:CD	1:A:211:THR:HG21	2.41	0.41
1:A:308:ASP:OD1	1:A:308:ASP:N	2.54	0.41
2:B:179:LEU:HA	2:B:179:LEU:HD23	1.90	0.41
1:A:220:LYS:HA	1:A:220:LYS:HD2	1.85	0.40

There are no symmetry-related clashes.

5.3 Torsion angles

5.3.1 Protein backbone

In the following table, the Percentiles column shows the percent Ramachandran outliers of the chain as a percentile score with respect to all X-ray entries followed by that with respect to entries of similar resolution.

The Analysed column shows the number of residues for which the backbone conformation was analysed, and the total number of residues.

Mol	Chain	Analysed	Favoured	Allowed	Outliers	Percentiles	
1	A	375/381 (98%)	367 (98%)	8 (2%)	0	100	100
2	B	109/114 (96%)	104 (95%)	3 (3%)	2 (2%)	11	2
All	All	484/495 (98%)	471 (97%)	11 (2%)	2 (0%)	39	27

All (2) Ramachandran outliers are listed below:

Mol	Chain	Res	Type
2	B	188	GLN
2	B	189	GLY

5.3.2 Protein sidechains

In the following table, the Percentiles column shows the percent sidechain outliers of the chain as a percentile score with respect to all X-ray entries followed by that with respect to entries of similar resolution.

The Analysed column shows the number of residues for which the sidechain conformation was analysed, and the total number of residues.

Mol	Chain	Analysed	Rotameric	Outliers	Percentiles	
1	A	310/316 (98%)	293 (94%)	17 (6%)	27	14
2	B	97/104 (93%)	89 (92%)	8 (8%)	14	5
All	All	407/420 (97%)	382 (94%)	25 (6%)	23	11

All (25) residues with a non-rotameric sidechain are listed below:

Mol	Chain	Res	Type
1	A	11	LEU
1	A	26	VAL
1	A	61	MET
1	A	64	THR

Continued on next page...

Continued from previous page...

Mol	Chain	Res	Type
1	A	88	LYS
1	A	95	VAL
1	A	100	ARG
1	A	113	SER
1	A	117	GLU
1	A	189	VAL
1	A	251	LYS
1	A	299	ARG
1	A	319	LYS
1	A	351	GLN
1	A	364	ASN
1	A	380	LEU
1	A	381	SER
2	B	177	GLU
2	B	188	GLN
2	B	196	GLN
2	B	229	ASN
2	B	238	LYS
2	B	250	GLU
2	B	255	GLU
2	B	256	GLN

Some sidechains can be flipped to improve hydrogen bonding and reduce clashes. All (12) such sidechains are listed below:

Mol	Chain	Res	Type
1	A	154	GLN
1	A	156	GLN
1	A	194	ASN
1	A	239	ASN
1	A	306	ASN
1	A	332	HIS
1	A	355	ASN
1	A	364	ASN
1	A	376	GLN
2	B	188	GLN
2	B	229	ASN
2	B	256	GLN

5.3.3 RNA ⓘ

There are no RNA molecules in this entry.

5.4 Non-standard residues in protein, DNA, RNA chains [i](#)

There are no non-standard protein/DNA/RNA residues in this entry.

5.5 Carbohydrates [i](#)

There are no carbohydrates in this entry.

5.6 Ligand geometry [i](#)

1 ligand is modelled in this entry.

In the following table, the Counts columns list the number of bonds (or angles) for which Mogul statistics could be retrieved, the number of bonds (or angles) that are observed in the model and the number of bonds (or angles) that are defined in the chemical component dictionary. The Link column lists molecule types, if any, to which the group is linked. The Z score for a bond length (or angle) is the number of standard deviations the observed value is removed from the expected value. A bond length (or angle) with $|Z| > 2$ is considered an outlier worth inspection. RMSZ is the root-mean-square of all Z scores of the bond lengths (or angles).

Mol	Type	Chain	Res	Link	Bond lengths			Bond angles		
					Counts	RMSZ	$\# Z > 2$	Counts	RMSZ	$\# Z > 2$
3	3P1	A	401	-	29,35,35	1.59	6 (20%)	32,51,51	2.15	4 (12%)

In the following table, the Chirals column lists the number of chiral outliers, the number of chiral centers analysed, the number of these observed in the model and the number defined in the chemical component dictionary. Similar counts are reported in the Torsion and Rings columns. '-' means no outliers of that kind were identified.

Mol	Type	Chain	Res	Link	Chirals	Torsions	Rings
3	3P1	A	401	-	-	0/5/27/27	0/5/5/5

All (6) bond length outliers are listed below:

Mol	Chain	Res	Type	Atoms	Z	Observed(Å)	Ideal(Å)
3	A	401	3P1	C8-N7	-3.93	1.33	1.38
3	A	401	3P1	C22-C23	-2.02	1.39	1.42
3	A	401	3P1	C18-N19	2.05	1.36	1.32
3	A	401	3P1	C6-N16	2.19	1.36	1.33
3	A	401	3P1	O11-C10	2.69	1.44	1.41
3	A	401	3P1	C17-C18	3.33	1.57	1.51

All (4) bond angle outliers are listed below:

Mol	Chain	Res	Type	Atoms	Z	Observed($^{\circ}$)	Ideal($^{\circ}$)
3	A	401	3P1	N3-C2-N1	-10.01	121.23	128.89
3	A	401	3P1	C12-O11-C10	-3.08	106.33	109.72
3	A	401	3P1	C21-C18-N19	-2.71	119.97	123.01
3	A	401	3P1	O11-C10-N5	2.04	110.62	108.29

There are no chirality outliers.

There are no torsion outliers.

There are no ring outliers.

No monomer is involved in short contacts.

5.7 Other polymers [i](#)

There are no such residues in this entry.

5.8 Polymer linkage issues [i](#)

There are no chain breaks in this entry.

6 Fit of model and data ⓘ

6.1 Protein, DNA and RNA chains ⓘ

In the following table, the column labelled ‘#RSRZ> 2’ contains the number (and percentage) of RSRZ outliers, followed by percent RSRZ outliers for the chain as percentile scores relative to all X-ray entries and entries of similar resolution. The OWAB column contains the minimum, median, 95th percentile and maximum values of the occupancy-weighted average B-factor per residue. The column labelled ‘Q< 0.9’ lists the number of (and percentage) of residues with an average occupancy less than 0.9.

Mol	Chain	Analysed	<RSRZ>	#RSRZ>2	OWAB(Å ²)	Q<0.9
1	A	377/381 (98%)	0.05	10 (2%) 58 61	15, 28, 44, 52	3 (0%)
2	B	111/114 (97%)	0.23	4 (3%) 46 50	18, 29, 47, 51	2 (1%)
All	All	488/495 (98%)	0.09	14 (2%) 55 59	15, 28, 45, 52	5 (1%)

All (14) RSRZ outliers are listed below:

Mol	Chain	Res	Type	RSRZ
2	B	189	GLY	6.3
2	B	256	GLN	5.0
1	A	189	VAL	4.8
2	B	150	GLY	4.4
2	B	190	PHE	4.0
1	A	109	GLY	3.5
1	A	100	ARG	3.2
1	A	88	LYS	2.8
1	A	93	MET	2.8
1	A	89	HIS	2.8
1	A	226	THR	2.6
1	A	46	ASP	2.4
1	A	187	LYS	2.4
1	A	23	HIS	2.1

6.2 Non-standard residues in protein, DNA, RNA chains ⓘ

There are no non-standard protein/DNA/RNA residues in this entry.

6.3 Carbohydrates ⓘ

There are no carbohydrates in this entry.

6.4 Ligands [i](#)

In the following table, the Atoms column lists the number of modelled atoms in the group and the number defined in the chemical component dictionary. LLDF column lists the quality of electron density of the group with respect to its neighbouring residues in protein, DNA or RNA chains. The B-factors column lists the minimum, median, 95th percentile and maximum values of B factors of atoms in the group. The column labelled 'Q< 0.9' lists the number of atoms with occupancy less than 0.9.

Mol	Type	Chain	Res	Atoms	RSCC	RSR	LLDF	B-factors(\AA^2)	Q<0.9
3	3P1	A	401	31/31	0.93	0.09	-0.13	16,21,29,30	0

6.5 Other polymers [i](#)

There are no such residues in this entry.