



Full wwPDB X-ray Structure Validation Report ⓘ

Feb 1, 2016 – 06:24 PM GMT

PDB ID : 4LHY
Title : Crystal structure of GDP-bound Rab8:Rabin8
Authors : Guo, Z.; Hou, X.M.; Goody, R.S.; Itzen, A.
Deposited on : 2013-07-01
Resolution : 3.10 Å(reported)

This is a Full wwPDB X-ray Structure Validation Report for a publicly released PDB entry.
We welcome your comments at validation@mail.wwpdb.org
A user guide is available at
<http://wwpdb.org/validation/2016/XrayValidationReportHelp>
with specific help available everywhere you see the ⓘ symbol.

The following versions of software and data (see [references ⓘ](#)) were used in the production of this report:

MolProbity : 4.02b-467
Mogul : 1.7 (RC4), CSD as536be (2015)
Xtriage (Phenix) : 1.9-1692
EDS : rb-20026688
Percentile statistics : 20151230.v01 (using entries in the PDB archive December 30th 2015)
Refmac : 5.8.0135
CCP4 : 6.5.0
Ideal geometry (proteins) : Engh & Huber (2001)
Ideal geometry (DNA, RNA) : Parkinson et al. (1996)
Validation Pipeline (wwPDB-VP) : trunk26865

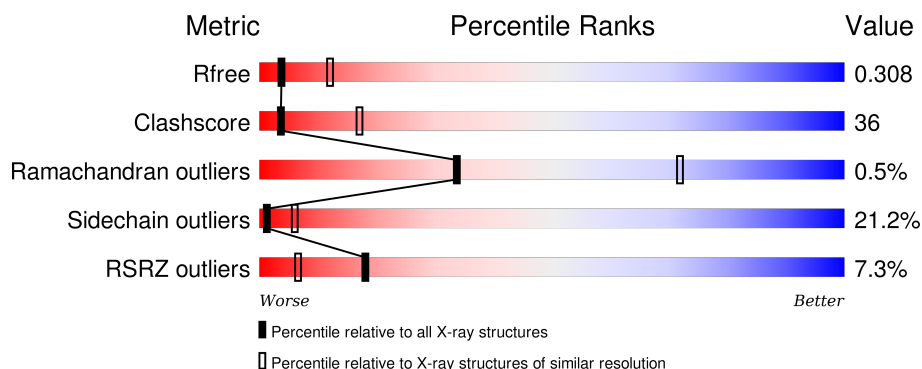
1 Overall quality at a glance

The following experimental techniques were used to determine the structure:

X-RAY DIFFRACTION

The reported resolution of this entry is 3.10 Å.

Percentile scores (ranging between 0-100) for global validation metrics of the entry are shown in the following graphic. The table shows the number of entries on which the scores are based.



Metric	Whole archive (#Entries)	Similar resolution (#Entries, resolution range(Å))
R_{free}	91344	1114 (3.14-3.06)
Clashscore	102246	1222 (3.14-3.06)
Ramachandran outliers	100387	1174 (3.14-3.06)
Sidechain outliers	100360	1174 (3.14-3.06)
RSRZ outliers	91569	1119 (3.14-3.06)

The table below summarises the geometric issues observed across the polymeric chains and their fit to the electron density. The red, orange, yellow and green segments on the lower bar indicate the fraction of residues that contain outliers for ≥ 3 , 2, 1 and 0 types of geometric quality criteria. A grey segment represents the fraction of residues that are not modelled. The numeric value for each fraction is indicated below the corresponding segment, with a dot representing fractions $\leq 5\%$. The upper red bar (where present) indicates the fraction of residues that have poor fit to the electron density. The numeric value is given above the bar.

Mol	Chain	Length	Quality of chain
1	A	186	
1	B	186	
2	C	78	
2	D	78	
2	E	78	

Continued on next page...

Continued from previous page...

Mol	Chain	Length	Quality of chain
2	F	78	

The following table lists non-polymeric compounds, carbohydrate monomers and non-standard residues in protein, DNA, RNA chains that are outliers for geometric or electron-density-fit criteria:

Mol	Type	Chain	Res	Chirality	Geometry	Clashes	Electron density
3	GDP	A	201	-	-	X	-
3	GDP	B	201	-	-	X	-

2 Entry composition

There are 4 unique types of molecules in this entry. The entry contains 4788 atoms, of which 0 are hydrogens and 0 are deuteriums.

In the tables below, the ZeroOcc column contains the number of atoms modelled with zero occupancy, the AltConf column contains the number of residues with at least one atom in alternate conformation and the Trace column contains the number of residues modelled with at most 2 atoms.

- Molecule 1 is a protein called Ras-related protein Rab-8A.

Mol	Chain	Residues	Atoms					ZeroOcc	AltConf	Trace
1	A	175	Total	C	N	O	S	0	0	0
			1389	888	234	260	7			
1	B	175	Total	C	N	O	S	0	0	0
			1383	882	230	264	7			

There are 4 discrepancies between the modelled and reference sequences:

Chain	Residue	Modelled	Actual	Comment	Reference
A	-1	GLY	-	EXPRESSION TAG	UNP P61006
A	0	HIS	-	EXPRESSION TAG	UNP P61006
B	-1	GLY	-	EXPRESSION TAG	UNP P61006
B	0	HIS	-	EXPRESSION TAG	UNP P61006

- Molecule 2 is a protein called Rab-3A-interacting protein.

Mol	Chain	Residues	Atoms					ZeroOcc	AltConf	Trace
2	C	72	Total	C	N	O	S	0	0	0
			481	293	89	97	2			
2	D	71	Total	C	N	O	S	0	0	0
			469	284	83	100	2			
2	E	76	Total	C	N	O	S	0	0	0
			498	303	92	101	2			
2	F	76	Total	C	N	O	S	0	0	0
			507	307	95	103	2			

There are 8 discrepancies between the modelled and reference sequences:

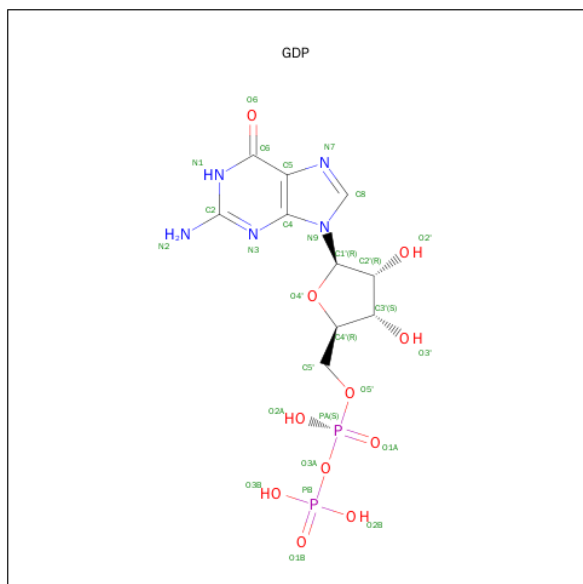
Chain	Residue	Modelled	Actual	Comment	Reference
C	155	GLY	-	EXPRESSION TAG	UNP Q96QF0
C	156	PRO	-	EXPRESSION TAG	UNP Q96QF0
D	155	GLY	-	EXPRESSION TAG	UNP Q96QF0
D	156	PRO	-	EXPRESSION TAG	UNP Q96QF0

Continued on next page...

Continued from previous page...

Chain	Residue	Modelled	Actual	Comment	Reference
E	155	GLY	-	EXPRESSION TAG	UNP Q96QF0
E	156	PRO	-	EXPRESSION TAG	UNP Q96QF0
F	155	GLY	-	EXPRESSION TAG	UNP Q96QF0
F	156	PRO	-	EXPRESSION TAG	UNP Q96QF0

- Molecule 3 is GUANOSINE-5'-DIPHOSPHATE (three-letter code: GDP) (formula: $C_{10}H_{15}N_5O_{11}P_2$).



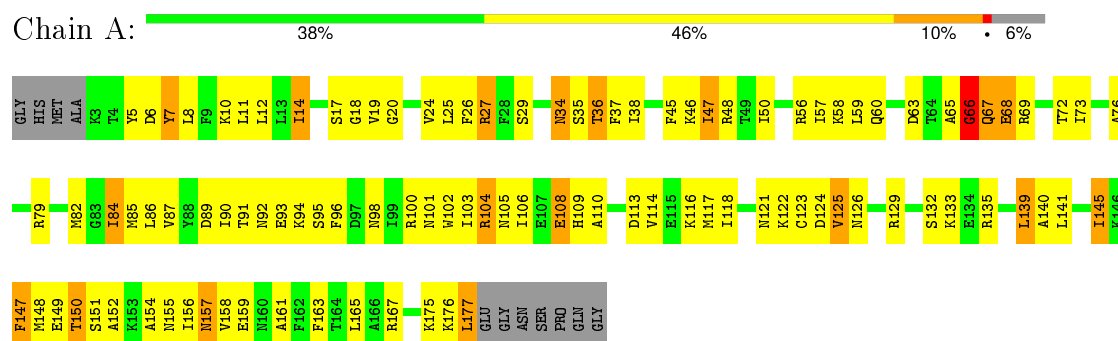


Mol	Chain	Residues	Atoms			ZeroOcc	AltConf
4	B	1	Total	O	S	0	0
			5	4	1		

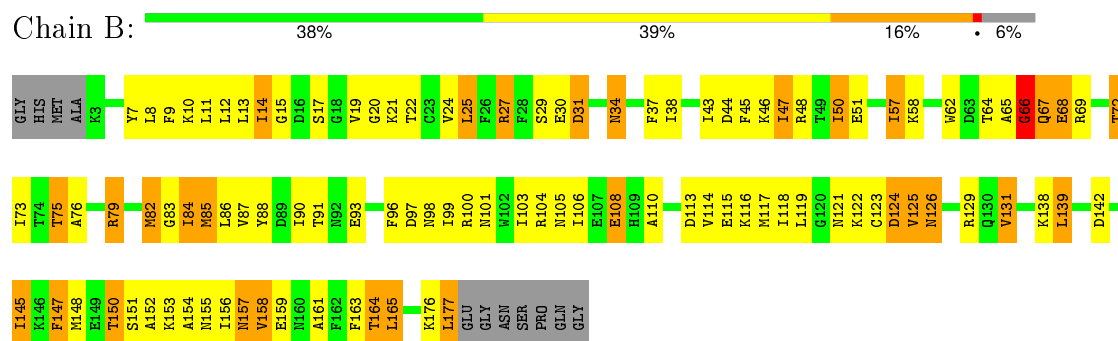
3 Residue-property plots

These plots are drawn for all protein, RNA and DNA chains in the entry. The first graphic for a chain summarises the proportions of errors displayed in the second graphic. The second graphic shows the sequence view annotated by issues in geometry and electron density. Residues are color-coded according to the number of geometric quality criteria for which they contain at least one outlier: green = 0, yellow = 1, orange = 2 and red = 3 or more. A red dot above a residue indicates a poor fit to the electron density ($RSRZ > 2$). Stretches of 2 or more consecutive residues without any outlier are shown as a green connector. Residues present in the sample, but not in the model, are shown in grey.

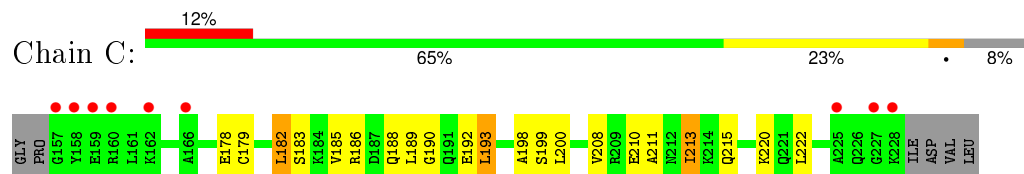
• Molecule 1: Ras-related protein Rab-8A



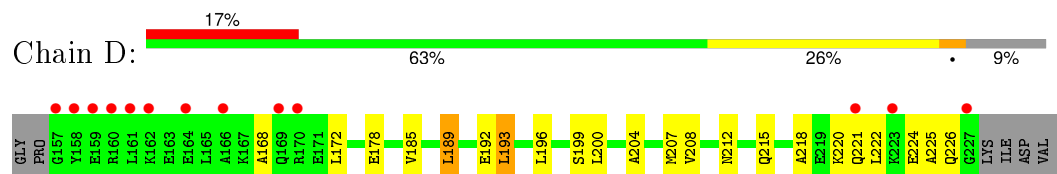
• Molecule 1: Ras-related protein Rab-8A



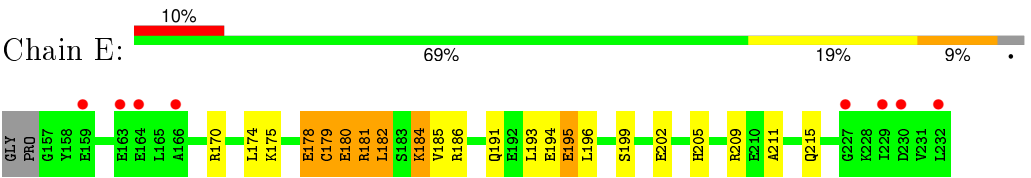
• Molecule 2: Rab-3A-interacting protein



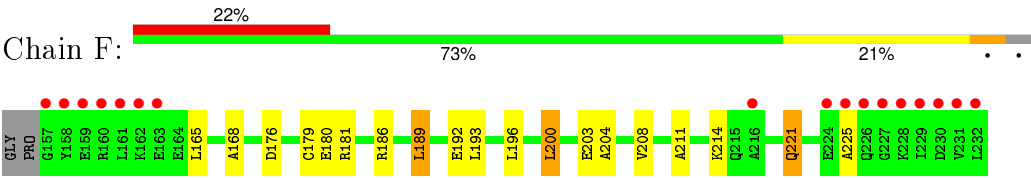
• Molecule 2: Rab-3A-interacting protein



● Molecule 2: Rab-3A-interacting protein



● Molecule 2: Rab-3A-interacting protein



4 Data and refinement statistics

Property	Value	Source
Space group	C 2 2 21	Depositor
Cell constants a, b, c, α , β , γ	80.59Å 164.76Å 166.42Å 90.00° 90.00° 90.00°	Depositor
Resolution (Å)	20.08 – 3.10 19.99 – 3.10	Depositor EDS
% Data completeness (in resolution range)	98.1 (20.08-3.10) 98.1 (19.99-3.10)	Depositor EDS
R_{merge}	(Not available)	Depositor
R_{sym}	(Not available)	Depositor
$\langle I/\sigma(I) \rangle$ ¹	4.03 (at 3.09Å)	Xtriage
Refinement program	REFMAC 5.5.0109	Depositor
R, R_{free}	0.288 , 0.310 0.284 , 0.308	Depositor DCC
R_{free} test set	1015 reflections (5.33%)	DCC
Wilson B-factor (Å ²)	69.4	Xtriage
Anisotropy	0.168	Xtriage
Bulk solvent k_{sol} (e/Å ³), B_{sol} (Å ²)	0.27 , 71.0	EDS
Estimated twinning fraction	No twinning to report.	Xtriage
L-test for twinning ²	$\langle L \rangle = 0.48$, $\langle L^2 \rangle = 0.31$	Xtriage
Outliers	1 of 20038 reflections (0.005%)	Xtriage
F_o, F_c correlation	0.88	EDS
Total number of atoms	4788	wwPDB-VP
Average B, all atoms (Å ²)	89.0	wwPDB-VP

Xtriage's analysis on translational NCS is as follows: *The largest off-origin peak in the Patterson function is 5.18% of the height of the origin peak. No significant pseudotranslation is detected.*

¹Intensities estimated from amplitudes.

²Theoretical values of $\langle |L| \rangle$, $\langle L^2 \rangle$ for acentric reflections are 0.5, 0.375 respectively for untwinned datasets, and 0.333, 0.2 for perfectly twinned datasets.

5 Model quality [i](#)

5.1 Standard geometry [i](#)

Bond lengths and bond angles in the following residue types are not validated in this section: GDP, SO4

The Z score for a bond length (or angle) is the number of standard deviations the observed value is removed from the expected value. A bond length (or angle) with $|Z| > 5$ is considered an outlier worth inspection. RMSZ is the root-mean-square of all Z scores of the bond lengths (or angles).

Mol	Chain	Bond lengths		Bond angles	
		RMSZ	$\# Z > 5$	RMSZ	$\# Z > 5$
1	A	0.98	0/1410	1.03	2/1893 (0.1%)
1	B	0.89	0/1404	0.97	1/1889 (0.1%)
2	C	0.70	0/482	0.67	0/651
2	D	0.64	0/470	0.62	0/638
2	E	0.57	0/499	0.54	0/674
2	F	0.61	0/508	0.61	0/687
All	All	0.82	0/4773	0.86	3/6432 (0.0%)

There are no bond length outliers.

All (3) bond angle outliers are listed below:

Mol	Chain	Res	Type	Atoms	Z	Observed(°)	Ideal(°)
1	A	7	TYR	CB-CA-C	-5.50	99.41	110.40
1	A	66	GLY	N-CA-C	5.31	126.39	113.10
1	B	66	GLY	N-CA-C	5.30	126.35	113.10

There are no chirality outliers.

There are no planarity outliers.

5.2 Too-close contacts [i](#)

In the following table, the Non-H and H(model) columns list the number of non-hydrogen atoms and hydrogen atoms in the chain respectively. The H(added) column lists the number of hydrogen atoms added and optimized by MolProbity. The Clashes column lists the number of clashes within the asymmetric unit, whereas Symm-Clashes lists symmetry related clashes.

Mol	Chain	Non-H	H(model)	H(added)	Clashes	Symm-Clashes
1	A	1389	0	1387	124	0
1	B	1383	0	1361	149	0

Continued on next page...

Continued from previous page...

Mol	Chain	Non-H	H(model)	H(added)	Clashes	Symm-Clashes
2	C	481	0	409	25	0
2	D	469	0	380	41	0
2	E	498	0	411	17	0
2	F	507	0	421	22	0
3	A	28	0	12	11	0
3	B	28	0	12	10	0
4	B	5	0	0	0	0
All	All	4788	0	4393	328	0

The all-atom clashscore is defined as the number of clashes found per 1000 atoms (including hydrogen atoms). The all-atom clashscore for this structure is 36.

All (328) close contacts within the same asymmetric unit are listed below, sorted by their clash magnitude.

Atom-1	Atom-2	Interatomic distance (Å)	Clash overlap (Å)
1:A:14:ILE:CG2	1:A:84:ILE:HD11	1.44	1.46
1:B:72:THR:HG23	2:D:189:LEU:CD1	1.71	1.21
2:D:221:GLN:O	2:D:225:ALA:HB3	1.42	1.17
1:A:14:ILE:CG2	1:A:84:ILE:CD1	2.22	1.17
1:B:14:ILE:CG2	1:B:84:ILE:HD13	1.73	1.16
1:B:14:ILE:HG21	1:B:84:ILE:HD13	1.30	1.07
1:B:72:THR:CG2	2:D:189:LEU:HD12	1.83	1.07
1:B:176:LYS:C	1:B:177:LEU:HD22	1.73	1.07
1:B:86:LEU:HD21	1:B:106:ILE:HD12	1.36	1.05
1:B:124:ASP:HB3	1:B:151:SER:OG	1.54	1.04
1:A:125:VAL:O	1:A:125:VAL:HG22	1.60	1.01
1:A:56:ARG:O	1:A:57:ILE:HD13	1.59	1.01
2:C:222:LEU:HD21	2:D:221:GLN:HB2	1.46	0.98
1:A:90:ILE:CD1	1:A:123:CYS:HA	1.93	0.98
1:B:72:THR:HG23	2:D:189:LEU:HD12	1.38	0.96
1:A:19:VAL:CG1	1:A:87:VAL:HG12	1.96	0.95
1:A:72:THR:CG2	2:F:189:LEU:CD1	2.45	0.94
1:A:14:ILE:HG23	1:A:84:ILE:HD11	0.98	0.94
1:B:84:ILE:HD12	1:B:84:ILE:C	1.88	0.93
1:A:72:THR:CG2	2:F:189:LEU:HD13	1.99	0.91
1:A:121:ASN:OD1	1:A:150:THR:HG22	1.72	0.90
1:A:20:GLY:HA2	3:A:201:GDP:PA	2.12	0.90
1:B:161:ALA:O	1:B:164:THR:HG22	1.73	0.88
1:A:14:ILE:HG22	1:A:84:ILE:CD1	2.00	0.87
1:A:56:ARG:C	1:A:57:ILE:HD13	1.94	0.87
1:A:14:ILE:HG22	1:A:84:ILE:HD11	1.52	0.86

Continued on next page...

Continued from previous page...

Atom-1	Atom-2	Interatomic distance (Å)	Clash overlap (Å)
1:A:72:THR:HG22	2:F:189:LEU:CD1	2.03	0.86
1:B:153:LYS:HG3	3:B:201:GDP:C6	2.12	0.85
1:A:20:GLY:HA2	3:A:201:GDP:O3A	1.75	0.84
1:B:121:ASN:HA	1:B:150:THR:HG22	1.57	0.84
2:C:179:CYS:SG	2:D:178:GLU:HG2	2.18	0.84
1:B:19:VAL:CG1	1:B:87:VAL:HG12	2.09	0.83
2:F:204:ALA:O	2:F:208:VAL:HG23	1.78	0.83
1:B:72:THR:CG2	2:D:189:LEU:CD1	2.46	0.82
1:B:84:ILE:HD12	1:B:85:MET:N	1.95	0.81
1:B:117:MET:CE	1:B:119:LEU:HD11	2.11	0.81
1:A:89:ASP:OD1	1:A:91:THR:HB	1.80	0.81
1:A:72:THR:HG22	2:F:189:LEU:HD12	1.62	0.80
2:D:220:LYS:O	2:D:224:GLU:CB	2.30	0.80
1:B:148:MET:HE1	1:B:164:THR:HG21	1.63	0.79
2:C:211:ALA:HB2	2:D:208:VAL:HG13	1.65	0.79
1:A:14:ILE:HG23	1:A:84:ILE:CD1	1.94	0.78
1:B:19:VAL:HG11	1:B:87:VAL:HG12	1.64	0.78
1:B:177:LEU:N	1:B:177:LEU:HD22	1.97	0.77
1:A:20:GLY:CA	3:A:201:GDP:O3A	2.32	0.77
1:B:25:LEU:HD11	1:B:46:LYS:HB2	1.65	0.77
1:B:117:MET:CE	1:B:161:ALA:HB1	2.14	0.77
2:D:221:GLN:O	2:D:225:ALA:CB	2.30	0.76
1:B:14:ILE:CD1	1:B:106:ILE:HD11	2.14	0.76
1:B:14:ILE:HG21	1:B:84:ILE:CD1	2.12	0.76
1:B:164:THR:CG2	1:B:165:LEU:N	2.48	0.76
1:B:117:MET:HE2	1:B:119:LEU:HD11	1.68	0.75
1:B:38:ILE:HD11	1:B:65:ALA:HB2	1.68	0.75
1:B:72:THR:HG22	1:B:73:ILE:N	2.00	0.74
1:A:125:VAL:O	1:A:125:VAL:CG2	2.29	0.74
1:A:19:VAL:HG11	1:A:87:VAL:HG12	1.66	0.74
1:A:93:GLU:OE2	1:A:135:ARG:NH2	2.21	0.74
1:A:8:LEU:HD11	1:A:60:GLN:NE2	2.02	0.74
2:C:186:ARG:HD2	2:D:185:VAL:HG11	1.68	0.74
1:A:124:ASP:OD1	1:A:151:SER:HB2	1.89	0.73
1:B:25:LEU:HD22	1:B:25:LEU:O	1.87	0.73
1:B:50:ILE:HG12	1:B:163:PHE:CZ	2.24	0.72
1:A:150:THR:O	1:A:150:THR:HG22	1.90	0.71
1:A:90:ILE:HD11	1:A:123:CYS:HA	1.72	0.71
1:B:24:VAL:HG13	1:B:158:VAL:HG12	1.71	0.71
1:B:72:THR:CG2	1:B:73:ILE:N	2.53	0.71
2:E:181:ARG:O	2:E:185:VAL:HG13	1.90	0.71

Continued on next page...

Continued from previous page...

Atom-1	Atom-2	Interatomic distance (Å)	Clash overlap (Å)
1:B:124:ASP:CB	1:B:151:SER:OG	2.37	0.70
1:A:12:LEU:O	1:A:84:ILE:HD12	1.92	0.70
1:B:27:ARG:CZ	1:B:155:ASN:HB2	2.22	0.69
1:A:126:ASN:OD1	1:A:129:ARG:NH1	2.25	0.69
1:B:108:GLU:OE2	1:B:108:GLU:C	2.30	0.69
1:A:29:SER:CB	1:A:46:LYS:HG2	2.22	0.69
1:B:153:LYS:HG3	3:B:201:GDP:N1	2.06	0.69
1:A:63:ASP:C	1:A:63:ASP:OD1	2.29	0.69
1:A:122:LYS:HD3	3:A:201:GDP:C2	2.29	0.68
1:A:7:TYR:CD2	1:A:57:ILE:HD12	2.29	0.68
1:B:66:GLY:O	1:B:67:GLN:C	2.31	0.68
1:B:72:THR:HG23	2:D:189:LEU:HD13	1.73	0.68
1:A:27:ARG:CZ	1:A:155:ASN:HB2	2.24	0.68
1:A:37:PHE:HE1	2:E:205:HIS:CE1	2.13	0.67
1:B:14:ILE:CG2	1:B:84:ILE:CD1	2.62	0.67
1:B:106:ILE:O	1:B:110:ALA:HB3	1.95	0.67
1:B:86:LEU:HD21	1:B:106:ILE:CD1	2.18	0.67
1:A:106:ILE:O	1:A:110:ALA:HB3	1.95	0.67
1:B:121:ASN:OD1	1:B:150:THR:CG2	2.42	0.66
1:A:86:LEU:HD21	1:A:106:ILE:HD12	1.76	0.66
1:A:37:PHE:CE1	2:E:205:HIS:CE1	2.83	0.66
1:B:124:ASP:HB3	1:B:151:SER:CB	2.25	0.66
1:A:132:SER:OG	1:A:135:ARG:HB2	1.95	0.66
1:A:118:ILE:HG13	1:A:145:ILE:HD11	1.77	0.66
1:A:121:ASN:OD1	1:A:150:THR:CG2	2.43	0.66
2:E:175:LYS:NZ	2:F:176:ASP:CB	2.59	0.66
1:B:13:LEU:O	1:B:64:THR:HG22	1.96	0.66
1:B:27:ARG:NE	1:B:155:ASN:HB2	2.11	0.66
1:A:93:GLU:O	1:A:96:PHE:N	2.28	0.66
1:A:14:ILE:HG22	1:A:84:ILE:HD13	1.78	0.65
1:B:164:THR:HG22	1:B:165:LEU:N	2.12	0.65
1:B:88:TYR:HB3	1:B:99:ILE:HD11	1.77	0.65
1:B:164:THR:HG22	1:B:165:LEU:H	1.61	0.65
1:A:72:THR:HB	2:F:192:GLU:CD	2.17	0.64
2:F:221:GLN:O	2:F:225:ALA:HB3	1.97	0.64
1:B:31:ASP:OD2	1:B:46:LYS:CE	2.46	0.64
1:B:159:GLU:O	1:B:163:PHE:HD1	1.81	0.64
1:A:151:SER:OG	1:A:154:ALA:HB3	1.98	0.64
1:A:66:GLY:O	1:A:67:GLN:C	2.31	0.64
2:C:182:LEU:O	2:C:185:VAL:HB	1.97	0.63
1:B:148:MET:CE	1:B:164:THR:HG21	2.28	0.63

Continued on next page...

Continued from previous page...

Atom-1	Atom-2	Interatomic distance (Å)	Clash overlap (Å)
1:A:20:GLY:HA2	3:A:201:GDP:O5'	1.98	0.63
1:A:90:ILE:HD13	1:A:123:CYS:HA	1.75	0.62
1:A:27:ARG:NE	1:A:155:ASN:HB2	2.14	0.62
2:C:208:VAL:HA	2:D:208:VAL:HG22	1.81	0.62
1:A:122:LYS:HG2	3:A:201:GDP:C6	2.34	0.62
1:A:38:ILE:HD11	1:A:65:ALA:HB2	1.81	0.62
1:A:72:THR:HB	2:F:192:GLU:OE1	2.00	0.62
1:A:101:ASN:O	1:A:104:ARG:HB2	1.98	0.62
1:B:117:MET:HE1	1:B:161:ALA:HB1	1.81	0.61
1:B:19:VAL:HG12	1:B:87:VAL:HG12	1.83	0.61
1:A:72:THR:HB	2:F:192:GLU:OE2	2.00	0.60
1:B:117:MET:HE3	1:B:119:LEU:HD11	1.82	0.60
1:B:117:MET:HE1	1:B:148:MET:HE1	1.83	0.60
2:C:186:ARG:HD2	2:D:185:VAL:HG21	1.82	0.60
1:B:72:THR:HG21	2:D:189:LEU:HD12	1.78	0.59
2:C:200:LEU:HB3	2:D:200:LEU:CD2	2.33	0.59
1:B:176:LYS:O	1:B:177:LEU:C	2.41	0.59
1:B:121:ASN:OD1	1:B:150:THR:HG22	2.03	0.59
1:A:72:THR:HG23	2:F:189:LEU:HD13	1.84	0.58
2:E:175:LYS:HZ2	2:F:176:ASP:CB	2.16	0.58
1:A:163:PHE:O	1:A:167:ARG:HG3	2.04	0.58
2:E:175:LYS:O	2:E:179:CYS:N	2.35	0.58
1:B:96:PHE:CG	1:B:131:VAL:HG11	2.39	0.58
1:A:36:THR:OG1	1:A:37:PHE:N	2.34	0.58
2:E:180:GLU:O	2:E:184:LYS:HB2	2.04	0.58
1:B:7:TYR:HB3	1:B:57:ILE:HD13	1.86	0.57
1:B:118:ILE:HG13	1:B:145:ILE:HD11	1.85	0.57
1:A:50:ILE:HD13	1:A:59:LEU:HD11	1.86	0.57
1:B:21:LYS:HZ1	3:B:201:GDP:PB	2.27	0.57
1:A:72:THR:HG21	2:F:189:LEU:HD13	1.87	0.57
1:B:122:LYS:HB3	1:B:125:VAL:CG1	2.35	0.57
1:B:117:MET:HE1	1:B:161:ALA:CA	2.35	0.56
1:B:117:MET:HE1	1:B:161:ALA:CB	2.35	0.56
2:D:220:LYS:O	2:D:224:GLU:N	2.39	0.56
2:C:222:LEU:CD1	2:D:221:GLN:OE1	2.54	0.56
1:A:45:PHE:CE1	1:A:47:ILE:HD12	2.40	0.56
1:B:117:MET:HE2	1:B:161:ALA:HB1	1.87	0.56
1:A:68:GLU:OE1	1:A:69:ARG:N	2.36	0.56
1:A:151:SER:OG	1:A:156:ILE:HG13	2.06	0.56
1:A:19:VAL:HG11	1:A:87:VAL:O	2.06	0.56
1:B:68:GLU:OE1	1:B:69:ARG:N	2.36	0.55

Continued on next page...

Continued from previous page...

Atom-1	Atom-2	Interatomic distance (Å)	Clash overlap (Å)
1:B:31:ASP:OD2	1:B:46:LYS:HE3	2.07	0.55
1:B:9:PHE:CD2	1:B:57:ILE:HD11	2.42	0.55
2:C:200:LEU:HB3	2:D:200:LEU:HD23	1.88	0.55
1:B:126:ASN:ND2	1:B:129:ARG:HH11	2.05	0.55
1:B:29:SER:O	1:B:30:GLU:HB2	2.07	0.55
1:A:133:LYS:HD3	1:A:149:GLU:CD	2.27	0.54
1:A:117:MET:HE1	1:A:148:MET:SD	2.46	0.54
2:D:221:GLN:HA	2:D:225:ALA:HB2	1.89	0.54
2:D:196:LEU:O	2:D:196:LEU:HD12	2.08	0.54
1:B:72:THR:HG22	1:B:73:ILE:H	1.71	0.54
1:A:5:TYR:CD1	1:A:58:LYS:HE3	2.43	0.54
1:B:155:ASN:CG	1:B:155:ASN:O	2.46	0.54
1:B:177:LEU:H	1:B:177:LEU:HD13	1.73	0.54
1:B:159:GLU:O	1:B:163:PHE:CD1	2.60	0.54
1:B:8:LEU:HD12	1:B:58:LYS:CB	2.38	0.54
1:A:34:ASN:H	1:A:34:ASN:ND2	2.07	0.53
1:B:126:ASN:HD21	1:B:129:ARG:HH11	1.54	0.53
1:A:12:LEU:HG	1:A:84:ILE:HD13	1.88	0.53
2:C:222:LEU:HD11	2:D:221:GLN:OE1	2.09	0.53
1:B:14:ILE:HG23	1:B:84:ILE:HD13	1.83	0.53
1:B:34:ASN:ND2	1:B:34:ASN:H	2.07	0.53
1:A:5:TYR:HD1	1:A:58:LYS:HE3	1.74	0.53
1:A:155:ASN:CG	1:A:155:ASN:O	2.46	0.53
1:B:114:VAL:O	1:B:114:VAL:HG13	2.09	0.53
1:B:82:MET:O	1:B:114:VAL:HG23	2.09	0.53
2:D:212:ASN:O	2:D:215:GLN:N	2.41	0.53
1:A:79:ARG:NH2	2:E:186:ARG:CB	2.72	0.53
1:B:148:MET:SD	1:B:157:ASN:OD1	2.67	0.53
2:D:204:ALA:O	2:D:208:VAL:HG23	2.09	0.53
1:B:38:ILE:CD1	1:B:65:ALA:HB2	2.39	0.53
2:F:221:GLN:HE21	2:F:221:GLN:N	2.06	0.53
1:A:18:GLY:N	3:A:201:GDP:O2B	2.33	0.52
1:B:20:GLY:HA2	3:B:201:GDP:O3A	2.10	0.52
1:A:26:PHE:CZ	1:A:36:THR:HB	2.45	0.52
1:A:148:MET:HG2	1:A:157:ASN:OD1	2.08	0.52
1:B:90:ILE:CD1	1:B:123:CYS:HA	2.39	0.52
1:B:164:THR:HG23	1:B:165:LEU:N	2.24	0.52
1:B:72:THR:HG22	2:D:192:GLU:OE2	2.09	0.52
1:B:79:ARG:HH21	2:C:186:ARG:HE	1.57	0.52
1:A:140:ALA:HB2	1:A:147:PHE:HB2	1.92	0.52
1:A:114:VAL:O	1:A:114:VAL:HG13	2.09	0.52

Continued on next page...

Continued from previous page...

Atom-1	Atom-2	Interatomic distance (Å)	Clash overlap (Å)
1:A:177:LEU:HD22	1:A:177:LEU:N	2.25	0.52
1:B:177:LEU:N	1:B:177:LEU:HD13	2.25	0.52
1:B:86:LEU:HD11	1:B:106:ILE:CD1	2.39	0.51
1:A:14:ILE:CG2	1:A:84:ILE:HD13	2.30	0.51
1:B:116:LYS:HZ3	1:B:116:LYS:HB2	1.76	0.51
2:D:168:ALA:O	2:D:172:LEU:CB	2.57	0.51
1:B:50:ILE:HG12	1:B:163:PHE:HZ	1.75	0.51
2:C:215:GLN:HA	2:D:215:GLN:HG2	1.93	0.51
2:D:220:LYS:O	2:D:224:GLU:CA	2.58	0.51
1:B:159:GLU:HG3	1:B:163:PHE:CE1	2.46	0.50
1:A:48:ARG:NH2	1:A:159:GLU:OE2	2.43	0.50
1:B:117:MET:HE1	1:B:161:ALA:HA	1.92	0.50
1:A:154:ALA:HB3	1:A:156:ILE:HG13	1.94	0.50
1:A:34:ASN:HD22	1:A:34:ASN:H	1.59	0.50
1:B:14:ILE:HD13	1:B:86:LEU:HG	1.94	0.50
1:A:118:ILE:CG1	1:A:145:ILE:HD11	2.41	0.50
1:A:36:THR:OG1	1:A:38:ILE:HG22	2.12	0.50
1:B:86:LEU:HD11	1:B:106:ILE:HD13	1.94	0.50
1:B:154:ALA:HB3	1:B:156:ILE:HG13	1.94	0.50
1:B:12:LEU:HD12	1:B:62:TRP:O	2.12	0.50
1:B:98:ASN:O	1:B:99:ILE:C	2.49	0.49
1:B:153:LYS:HE2	3:B:201:GDP:C2	2.47	0.49
2:C:215:GLN:HA	2:D:215:GLN:CG	2.43	0.49
2:E:170:ARG:O	2:E:174:LEU:N	2.32	0.49
1:A:72:THR:CG2	2:F:189:LEU:HD12	2.27	0.49
1:A:18:GLY:H	3:A:201:GDP:PB	2.34	0.49
1:A:47:ILE:HD13	2:E:202:GLU:CD	2.33	0.49
1:B:34:ASN:HD22	1:B:34:ASN:H	1.59	0.49
1:A:108:GLU:OE2	1:A:109:HIS:ND1	2.46	0.49
2:C:222:LEU:HD21	2:D:221:GLN:CB	2.30	0.48
1:B:117:MET:CE	1:B:148:MET:CE	2.90	0.48
1:B:14:ILE:HD13	1:B:84:ILE:HD11	1.96	0.48
1:B:117:MET:CE	1:B:148:MET:HE1	2.44	0.48
1:B:22:THR:HB	3:B:201:GDP:O2A	2.12	0.48
1:A:122:LYS:HD3	3:A:201:GDP:N3	2.27	0.48
1:A:7:TYR:CD2	1:A:57:ILE:CD1	2.97	0.48
1:A:26:PHE:HZ	1:A:36:THR:HB	1.78	0.48
1:B:122:LYS:HB3	1:B:125:VAL:HG13	1.96	0.48
1:B:83:GLY:HA2	1:B:115:GLU:O	2.14	0.47
1:A:73:ILE:O	1:A:76:ALA:HB3	2.13	0.47
1:B:19:VAL:HG13	1:B:88:TYR:C	2.35	0.47

Continued on next page...

Continued from previous page...

Atom-1	Atom-2	Interatomic distance (Å)	Clash overlap (Å)
1:B:108:GLU:OE2	1:B:108:GLU:O	2.32	0.47
1:A:92:ASN:O	1:A:95:SER:OG	2.33	0.47
1:A:14:ILE:HD11	1:A:102:TRP:HB3	1.97	0.47
1:B:20:GLY:CA	3:B:201:GDP:O3A	2.62	0.47
1:A:96:PHE:CZ	1:A:139:LEU:HD12	2.50	0.47
1:A:7:TYR:HD2	1:A:57:ILE:CD1	2.28	0.46
1:B:20:GLY:N	3:B:201:GDP:O3A	2.48	0.46
1:B:21:LYS:NZ	3:B:201:GDP:O3B	2.39	0.46
1:A:89:ASP:CG	1:A:91:THR:HB	2.35	0.46
1:A:34:ASN:O	1:A:36:THR:HG22	2.14	0.46
1:B:50:ILE:HD12	1:B:51:GLU:H	1.81	0.46
1:A:29:SER:OG	1:A:46:LYS:HG2	2.15	0.46
2:C:186:ARG:O	2:C:190:GLY:N	2.47	0.46
1:A:10:LYS:H	1:A:82:MET:CE	2.28	0.46
2:C:193:LEU:HD21	2:D:193:LEU:HB2	1.97	0.46
1:B:14:ILE:HD13	1:B:106:ILE:HD11	1.94	0.46
1:A:100:ARG:O	1:A:103:ILE:HB	2.16	0.46
1:A:19:VAL:HG12	1:A:87:VAL:HG12	1.91	0.46
1:B:104:ARG:O	1:B:105:ASN:C	2.55	0.46
1:A:96:PHE:CE1	1:A:139:LEU:HD12	2.51	0.45
1:B:37:PHE:CE2	2:D:207:MET:CE	2.99	0.45
1:B:147:PHE:C	1:B:147:PHE:CD2	2.90	0.45
2:F:200:LEU:HA	2:F:200:LEU:HD13	1.81	0.45
1:A:84:ILE:HD12	1:A:85:MET:N	2.32	0.45
1:A:129:ARG:NH2	1:A:149:GLU:OE2	2.50	0.45
1:B:84:ILE:HD11	1:B:106:ILE:HD11	1.99	0.45
2:C:211:ALA:CB	2:D:208:VAL:HG13	2.42	0.45
2:E:181:ARG:HB2	2:E:181:ARG:CZ	2.45	0.45
1:B:43:ILE:HG22	1:B:44:ASP:N	2.31	0.45
1:B:45:PHE:CZ	2:C:198:ALA:HB1	2.52	0.45
1:A:93:GLU:HG3	1:B:93:GLU:HG2	1.97	0.45
2:E:215:GLN:OE1	2:F:214:LYS:HB2	2.17	0.45
2:E:191:GLN:O	2:E:195:GLU:HG3	2.16	0.45
2:E:193:LEU:HD13	2:F:189:LEU:HG	1.99	0.45
2:F:165:LEU:HA	2:F:168:ALA:HB3	1.98	0.45
1:B:12:LEU:HB3	1:B:84:ILE:HB	1.99	0.44
1:B:84:ILE:HD11	1:B:86:LEU:HG	1.98	0.44
1:B:93:GLU:OE1	1:B:97:ASP:OD1	2.35	0.44
1:B:15:GLY:O	1:B:21:LYS:HE2	2.18	0.44
1:A:104:ARG:O	1:A:105:ASN:C	2.55	0.44
2:D:212:ASN:O	2:D:215:GLN:HB2	2.18	0.44

Continued on next page...

Continued from previous page...

Atom-1	Atom-2	Interatomic distance (Å)	Clash overlap (Å)
2:E:211:ALA:O	2:F:211:ALA:HB1	2.17	0.44
1:B:87:VAL:HG22	1:B:119:LEU:HB2	2.00	0.44
1:A:45:PHE:HZ	1:A:60:GLN:HG2	1.83	0.44
1:B:9:PHE:HA	1:B:82:MET:SD	2.58	0.44
1:A:114:VAL:HG13	1:A:116:LYS:HG3	2.00	0.44
1:B:47:ILE:CG2	1:B:48:ARG:N	2.79	0.44
1:A:20:GLY:N	3:A:201:GDP:O3A	2.50	0.44
2:D:189:LEU:HD12	2:D:189:LEU:HA	1.83	0.43
1:B:121:ASN:OD1	1:B:150:THR:HG23	2.17	0.43
1:B:139:LEU:O	1:B:142:ASP:HB2	2.18	0.43
1:B:72:THR:HG21	2:D:189:LEU:HA	2.00	0.43
2:D:225:ALA:O	2:D:226:GLN:C	2.56	0.43
1:B:27:ARG:HD3	1:B:152:ALA:O	2.19	0.43
2:C:186:ARG:CD	2:D:185:VAL:HG21	2.46	0.43
1:B:37:PHE:CE2	2:D:207:MET:HE3	2.53	0.43
1:B:121:ASN:CA	1:B:150:THR:HG22	2.40	0.43
2:C:182:LEU:HD22	2:C:182:LEU:HA	1.79	0.43
2:F:179:CYS:O	2:F:180:GLU:C	2.57	0.43
2:E:209:ARG:NH1	2:E:209:ARG:HB2	2.34	0.43
1:A:92:ASN:HD21	1:A:94:LYS:NZ	2.17	0.43
1:B:98:ASN:O	1:B:101:ASN:N	2.52	0.43
2:E:178:GLU:O	2:E:182:LEU:HD23	2.19	0.43
1:B:86:LEU:HD22	1:B:103:ILE:HG13	2.02	0.42
1:A:122:LYS:HD3	3:A:201:GDP:C4	2.54	0.42
1:A:140:ALA:HB1	1:A:145:ILE:O	2.18	0.42
1:A:91:THR:CG2	1:A:91:THR:O	2.68	0.42
1:B:122:LYS:O	1:B:125:VAL:HG13	2.20	0.42
2:C:222:LEU:HD11	2:D:218:ALA:HA	2.01	0.42
1:A:117:MET:HE2	1:A:161:ALA:HB1	2.00	0.42
1:B:91:THR:O	1:B:91:THR:CG2	2.68	0.42
1:A:117:MET:HE3	1:A:148:MET:HB2	2.02	0.42
1:B:10:LYS:O	1:B:11:LEU:HD12	2.20	0.42
1:B:114:VAL:CG1	1:B:114:VAL:O	2.68	0.41
1:B:27:ARG:CD	1:B:152:ALA:O	2.69	0.41
1:A:98:ASN:O	1:A:101:ASN:HB2	2.21	0.41
1:A:176:LYS:O	1:A:176:LYS:HG3	2.20	0.41
1:A:176:LYS:CG	1:A:176:LYS:O	2.68	0.41
2:F:196:LEU:O	2:F:196:LEU:HD12	2.21	0.41
1:A:126:ASN:CG	1:A:129:ARG:HH11	2.24	0.41
1:A:145:ILE:HD13	1:A:145:ILE:HG21	1.84	0.41
1:B:19:VAL:HG11	1:B:87:VAL:C	2.41	0.41

Continued on next page...

Continued from previous page...

Atom-1	Atom-2	Interatomic distance (Å)	Clash overlap (Å)
1:B:114:VAL:HG13	1:B:116:LYS:HG3	2.01	0.41
1:B:75:THR:HG22	1:B:76:ALA:N	2.33	0.41
1:B:148:MET:HE1	1:B:161:ALA:HA	2.02	0.41
1:A:114:VAL:O	1:A:114:VAL:CG1	2.68	0.41
1:A:5:TYR:HD2	1:A:7:TYR:N	2.18	0.41
1:B:176:LYS:O	1:B:177:LEU:HD22	2.14	0.41
1:B:31:ASP:OD2	1:B:46:LYS:HE2	2.21	0.41
2:C:210:GLU:HA	2:C:213:ILE:HD12	2.02	0.40
2:C:179:CYS:SG	2:D:178:GLU:CG	3.01	0.40
1:A:27:ARG:HD3	1:A:152:ALA:O	2.21	0.40
2:C:200:LEU:HA	2:C:200:LEU:HD23	1.82	0.40
1:B:122:LYS:O	1:B:123:CYS:C	2.60	0.40
1:A:92:ASN:C	1:A:92:ASN:OD1	2.59	0.40
1:B:153:LYS:HG3	3:B:201:GDP:C2	2.56	0.40
1:B:50:ILE:O	1:B:57:ILE:HG23	2.20	0.40

There are no symmetry-related clashes.

5.3 Torsion angles [i](#)

5.3.1 Protein backbone [i](#)

In the following table, the Percentiles column shows the percent Ramachandran outliers of the chain as a percentile score with respect to all X-ray entries followed by that with respect to entries of similar resolution.

The Analysed column shows the number of residues for which the backbone conformation was analysed, and the total number of residues.

Mol	Chain	Analysed	Favoured	Allowed	Outliers	Percentiles	
1	A	173/186 (93%)	162 (94%)	10 (6%)	1 (1%)	30	68
1	B	173/186 (93%)	159 (92%)	13 (8%)	1 (1%)	30	68
2	C	70/78 (90%)	66 (94%)	3 (4%)	1 (1%)	14	48
2	D	69/78 (88%)	61 (88%)	8 (12%)	0	100	100
2	E	74/78 (95%)	74 (100%)	0	0	100	100
2	F	74/78 (95%)	69 (93%)	5 (7%)	0	100	100
All	All	633/684 (92%)	591 (93%)	39 (6%)	3 (0%)	34	72

All (3) Ramachandran outliers are listed below:

Mol	Chain	Res	Type
1	A	66	GLY
1	B	66	GLY
2	C	213	ILE

5.3.2 Protein sidechains ⓘ

In the following table, the Percentiles column shows the percent sidechain outliers of the chain as a percentile score with respect to all X-ray entries followed by that with respect to entries of similar resolution.

The Analysed column shows the number of residues for which the sidechain conformation was analysed, and the total number of residues.

Mol	Chain	Analysed	Rotameric	Outliers	Percentiles	
1	A	146/159 (92%)	118 (81%)	28 (19%)	2	8
1	B	145/159 (91%)	111 (77%)	34 (23%)	1	4
2	C	36/66 (54%)	27 (75%)	9 (25%)	1	2
2	D	35/66 (53%)	31 (89%)	4 (11%)	7	28
2	E	35/66 (53%)	25 (71%)	10 (29%)	0	1
2	F	37/66 (56%)	30 (81%)	7 (19%)	2	8
All	All	434/582 (75%)	342 (79%)	92 (21%)	1	6

All (92) residues with a non-rotameric sidechain are listed below:

Mol	Chain	Res	Type
1	A	6	ASP
1	A	11	LEU
1	A	14	ILE
1	A	17	SER
1	A	24	VAL
1	A	25	LEU
1	A	27	ARG
1	A	34	ASN
1	A	35	SER
1	A	36	THR
1	A	47	ILE
1	A	67	GLN
1	A	68	GLU
1	A	84	ILE
1	A	104	ARG
1	A	108	GLU

Continued on next page...

Continued from previous page...

Mol	Chain	Res	Type
1	A	113	ASP
1	A	125	VAL
1	A	139	LEU
1	A	141	LEU
1	A	145	ILE
1	A	147	PHE
1	A	150	THR
1	A	157	ASN
1	A	158	VAL
1	A	165	LEU
1	A	175	LYS
1	A	177	LEU
1	B	14	ILE
1	B	17	SER
1	B	25	LEU
1	B	27	ARG
1	B	31	ASP
1	B	34	ASN
1	B	47	ILE
1	B	50	ILE
1	B	57	ILE
1	B	67	GLN
1	B	68	GLU
1	B	72	THR
1	B	75	THR
1	B	79	ARG
1	B	82	MET
1	B	84	ILE
1	B	85	MET
1	B	100	ARG
1	B	108	GLU
1	B	113	ASP
1	B	124	ASP
1	B	125	VAL
1	B	126	ASN
1	B	131	VAL
1	B	138	LYS
1	B	139	LEU
1	B	145	ILE
1	B	147	PHE
1	B	150	THR
1	B	157	ASN

Continued on next page...

Continued from previous page...

Mol	Chain	Res	Type
1	B	158	VAL
1	B	164	THR
1	B	165	LEU
1	B	177	LEU
2	C	178	GLU
2	C	182	LEU
2	C	183	SER
2	C	188	GLN
2	C	189	LEU
2	C	192	GLU
2	C	193	LEU
2	C	199	SER
2	C	220	LYS
2	D	189	LEU
2	D	193	LEU
2	D	199	SER
2	D	222	LEU
2	E	178	GLU
2	E	179	CYS
2	E	180	GLU
2	E	181	ARG
2	E	182	LEU
2	E	184	LYS
2	E	194	GLU
2	E	195	GLU
2	E	196	LEU
2	E	199	SER
2	F	181	ARG
2	F	186	ARG
2	F	189	LEU
2	F	193	LEU
2	F	200	LEU
2	F	203	GLU
2	F	221	GLN

Some sidechains can be flipped to improve hydrogen bonding and reduce clashes. All (10) such sidechains are listed below:

Mol	Chain	Res	Type
1	A	34	ASN
1	A	60	GLN
1	A	67	GLN
1	B	34	ASN

Continued on next page...

Continued from previous page...

Mol	Chain	Res	Type
1	B	67	GLN
1	B	101	ASN
1	B	126	ASN
2	D	215	GLN
2	F	215	GLN
2	F	221	GLN

5.3.3 RNA ⓘ

There are no RNA molecules in this entry.

5.4 Non-standard residues in protein, DNA, RNA chains ⓘ

There are no non-standard protein/DNA/RNA residues in this entry.

5.5 Carbohydrates ⓘ

There are no carbohydrates in this entry.

5.6 Ligand geometry ⓘ

3 ligands are modelled in this entry.

In the following table, the Counts columns list the number of bonds (or angles) for which Mogul statistics could be retrieved, the number of bonds (or angles) that are observed in the model and the number of bonds (or angles) that are defined in the chemical component dictionary. The Link column lists molecule types, if any, to which the group is linked. The Z score for a bond length (or angle) is the number of standard deviations the observed value is removed from the expected value. A bond length (or angle) with $|Z| > 2$ is considered an outlier worth inspection. RMSZ is the root-mean-square of all Z scores of the bond lengths (or angles).

Mol	Type	Chain	Res	Link	Bond lengths			Bond angles		
					Counts	RMSZ	$\# Z > 2$	Counts	RMSZ	$\# Z > 2$
3	GDP	A	201	-	23,30,30	1.13	2 (8%)	30,47,47	1.71	6 (20%)
3	GDP	B	201	-	23,30,30	1.33	3 (13%)	30,47,47	3.03	14 (46%)
4	SO4	B	202	-	4,4,4	0.11	0	6,6,6	0.23	0

In the following table, the Chirals column lists the number of chiral outliers, the number of chiral centers analysed, the number of these observed in the model and the number defined in the chemical component dictionary. Similar counts are reported in the Torsion and Rings columns. '-' means

no outliers of that kind were identified.

Mol	Type	Chain	Res	Link	Chirals	Torsions	Rings
3	GDP	A	201	-	-	0/12/32/32	0/3/3/3
3	GDP	B	201	-	-	0/12/32/32	0/3/3/3
4	SO4	B	202	-	-	0/0/0/0	0/0/0/0

All (5) bond length outliers are listed below:

Mol	Chain	Res	Type	Atoms	Z	Observed(Å)	Ideal(Å)
3	A	201	GDP	C4-N3	-3.06	1.30	1.35
3	B	201	GDP	C5-C4	2.60	1.46	1.40
3	A	201	GDP	O4'-C1'	2.63	1.44	1.41
3	B	201	GDP	O4'-C1'	2.67	1.44	1.41
3	B	201	GDP	C6-C5	3.44	1.48	1.41

All (20) bond angle outliers are listed below:

Mol	Chain	Res	Type	Atoms	Z	Observed(°)	Ideal(°)
3	B	201	GDP	C2'-C1'-N9	-8.65	101.08	114.29
3	B	201	GDP	PA-O3A-PB	-6.76	110.01	132.67
3	B	201	GDP	C5-C6-N1	-5.34	116.29	123.59
3	A	201	GDP	C5-C6-N1	-4.78	117.05	123.59
3	A	201	GDP	PA-O3A-PB	-3.97	119.36	132.67
3	B	201	GDP	C1'-N9-C4	-3.95	120.98	126.94
3	B	201	GDP	O3'-C3'-C2'	-3.65	99.96	111.83
3	B	201	GDP	C4-C5-N7	-3.25	106.49	109.48
3	B	201	GDP	C6-C5-C4	-3.06	117.25	120.90
3	B	201	GDP	N3-C2-N1	-2.73	123.29	127.44
3	B	201	GDP	O4'-C4'-C5'	-2.37	100.84	109.32
3	A	201	GDP	N3-C2-N1	-2.36	123.85	127.44
3	A	201	GDP	C6-C5-C4	-2.11	118.38	120.90
3	A	201	GDP	O4'-C1'-N9	-2.04	103.82	108.10
3	B	201	GDP	O3'-C3'-C4'	2.01	117.08	111.05
3	B	201	GDP	N2-C2-N1	2.07	120.62	117.20
3	B	201	GDP	O3A-PA-O5'	2.75	110.24	102.94
3	B	201	GDP	O4'-C1'-N9	3.29	114.99	108.10
3	A	201	GDP	C6-N1-C2	4.49	122.17	115.94
3	B	201	GDP	C6-N1-C2	4.87	122.70	115.94

There are no chirality outliers.

There are no torsion outliers.

There are no ring outliers.

2 monomers are involved in 21 short contacts:

Mol	Chain	Res	Type	Clashes	Symm-Clashes
3	A	201	GDP	11	0
3	B	201	GDP	10	0

5.7 Other polymers [i](#)

There are no such residues in this entry.

5.8 Polymer linkage issues [i](#)

There are no chain breaks in this entry.

6 Fit of model and data ⓘ

6.1 Protein, DNA and RNA chains ⓘ

In the following table, the column labelled ‘#RSRZ> 2’ contains the number (and percentage) of RSRZ outliers, followed by percent RSRZ outliers for the chain as percentile scores relative to all X-ray entries and entries of similar resolution. The OWAB column contains the minimum, median, 95th percentile and maximum values of the occupancy-weighted average B-factor per residue. The column labelled ‘Q< 0.9’ lists the number of (and percentage) of residues with an average occupancy less than 0.9.

Mol	Chain	Analysed	<RSRZ>	#RSRZ>2		OWAB(Å ²)	Q<0.9
1	A	175/186 (94%)	0.04	0	100 100	36, 67, 121, 151	0
1	B	175/186 (94%)	0.07	0	100 100	43, 75, 128, 173	0
2	C	72/78 (92%)	0.50	9 (12%)	5 2	27, 101, 199, 248	0
2	D	71/78 (91%)	0.51	13 (18%)	2 1	26, 107, 225, 255	0
2	E	76/78 (97%)	0.27	8 (10%)	8 3	29, 107, 246, 263	0
2	F	76/78 (97%)	1.10	17 (22%)	1 0	29, 123, 277, 294	0
All	All	645/684 (94%)	0.30	47 (7%)	18 6	26, 79, 216, 294	0

All (47) RSRZ outliers are listed below:

Mol	Chain	Res	Type	RSRZ
2	F	157	GLY	14.0
2	F	160	ARG	8.6
2	C	159	GLU	6.7
2	D	227	GLY	6.6
2	C	157	GLY	6.2
2	D	157	GLY	6.2
2	F	161	LEU	6.1
2	C	166	ALA	5.7
2	F	158	TYR	5.6
2	F	225	ALA	5.6
2	F	224	GLU	5.0
2	F	159	GLU	4.3
2	F	231	VAL	4.0
2	C	228	LYS	3.8
2	E	227	GLY	3.7
2	C	158	TYR	3.4
2	F	162	LYS	3.4
2	C	225	ALA	3.4
2	E	166	ALA	3.4

Continued on next page...

Continued from previous page...

Mol	Chain	Res	Type	RSRZ
2	F	230	ASP	3.3
2	E	232	LEU	3.1
2	F	228	LYS	3.1
2	F	227	GLY	3.0
2	F	163	GLU	3.0
2	D	164	GLU	3.0
2	F	226	GLN	3.0
2	C	162	LYS	2.8
2	D	158	TYR	2.8
2	D	170	ARG	2.7
2	E	164	GLU	2.7
2	E	230	ASP	2.7
2	F	232	LEU	2.6
2	D	169	GLN	2.5
2	C	160	ARG	2.5
2	D	166	ALA	2.4
2	D	160	ARG	2.4
2	C	227	GLY	2.3
2	D	161	LEU	2.3
2	E	159	GLU	2.3
2	E	163	GLU	2.2
2	D	159	GLU	2.2
2	D	223	LYS	2.2
2	E	229	ILE	2.2
2	D	221	GLN	2.2
2	F	216	ALA	2.1
2	D	162	LYS	2.1
2	F	229	ILE	2.0

6.2 Non-standard residues in protein, DNA, RNA chains [i](#)

There are no non-standard protein/DNA/RNA residues in this entry.

6.3 Carbohydrates [i](#)

There are no carbohydrates in this entry.

6.4 Ligands [i](#)

In the following table, the Atoms column lists the number of modelled atoms in the group and the number defined in the chemical component dictionary. LLDF column lists the quality of electron

density of the group with respect to its neighbouring residues in protein, DNA or RNA chains. The B-factors column lists the minimum, median, 95th percentile and maximum values of B factors of atoms in the group. The column labelled 'Q< 0.9' lists the number of atoms with occupancy less than 0.9.

Mol	Type	Chain	Res	Atoms	RSCC	RSR	LLDF	B-factors(\AA^2)	Q<0.9
3	GDP	A	201	28/28	0.94	0.20	-0.44	42,45,51,52	0
3	GDP	B	201	28/28	0.93	0.20	-0.79	34,58,59,61	0
4	SO4	B	202	5/5	0.60	0.43	-	144,144,145,145	0

6.5 Other polymers

There are no such residues in this entry.