



# Full wwPDB X-ray Structure Validation Report ⓘ

Jan 18, 2017 – 12:02 AM EST

PDB ID : 5LMK  
Title : Structure of phopsho-CDK2-cyclin A in complex with an ATP-competitive inhibitor  
Authors : Echalier, A.  
Deposited on : 2016-08-01  
Resolution : 2.40 Å(reported)

This is a Full wwPDB X-ray Structure Validation Report for a publicly released PDB entry.

We welcome your comments at [validation@mail.wwpdb.org](mailto:validation@mail.wwpdb.org)

A user guide is available at

<http://wwpdb.org/validation/2016/XrayValidationReportHelp>

with specific help available everywhere you see the ⓘ symbol.

---

The following versions of software and data (see [references ⓘ](#)) were used in the production of this report:

MolProbity	:	4.02b-467
Mogul	:	1.7.1 (RC1), CSD as537be (2016)
Xtriage (Phenix)	:	1.9-1692
EDS	:	rb-20028442
Percentile statistics	:	20151230.v01 (using entries in the PDB archive December 30th 2015)
Refmac	:	5.8.0135
CCP4	:	6.5.0
Ideal geometry (proteins)	:	Engh & Huber (2001)
Ideal geometry (DNA, RNA)	:	Parkinson et al. (1996)
Validation Pipeline (wwPDB-VP)	:	rb-20028442

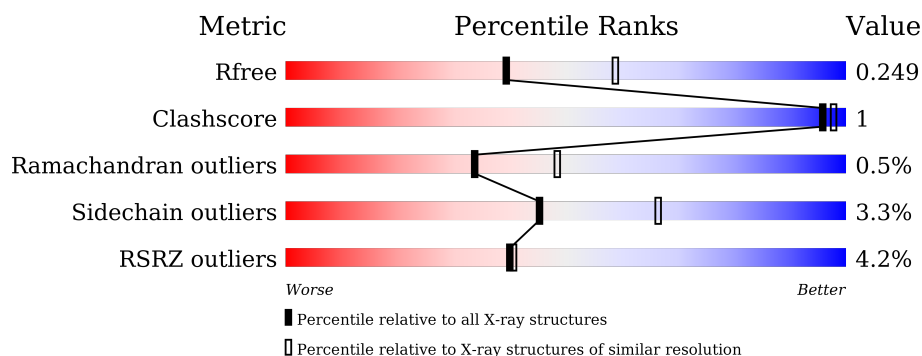
# 1 Overall quality at a glance

The following experimental techniques were used to determine the structure:

## *X-RAY DIFFRACTION*

The reported resolution of this entry is 2.40 Å.

Percentile scores (ranging between 0-100) for global validation metrics of the entry are shown in the following graphic. The table shows the number of entries on which the scores are based.



Metric	Whole archive (#Entries)	Similar resolution (#Entries, resolution range(Å))
$R_{free}$	91344	2919 (2.40-2.40)
Clashscore	102246	3407 (2.40-2.40)
Ramachandran outliers	100387	3351 (2.40-2.40)
Sidechain outliers	100360	3352 (2.40-2.40)
RSRZ outliers	91569	2928 (2.40-2.40)

The table below summarises the geometric issues observed across the polymeric chains and their fit to the electron density. The red, orange, yellow and green segments on the lower bar indicate the fraction of residues that contain outliers for  $\geq 3$ , 2, 1 and 0 types of geometric quality criteria. A grey segment represents the fraction of residues that are not modelled. The numeric value for each fraction is indicated below the corresponding segment, with a dot representing fractions  $\leq 5\%$ . The upper red bar (where present) indicates the fraction of residues that have poor fit to the electron density. The numeric value is given above the bar.

Mol	Chain	Length	Quality of chain
1	A	299	<div> <div>3%</div> <div>93%</div> <div>7%</div> <div>.</div> </div>
2	B	258	<div> <div>3%</div> <div>93%</div> <div>6%</div> <div>.</div> </div>
2	D	258	<div> <div>8%</div> <div>91%</div> <div>8%</div> </div>
3	C	297	<div> <div>3%</div> <div>83%</div> <div>6%</div> <div>.</div> <div>10%</div> </div>

The following table lists non-polymeric compounds, carbohydrate monomers and non-standard residues in protein, DNA, RNA chains that are outliers for geometric or electron-density-fit crite-

ria:

Mol	Type	Chain	Res	Chirality	Geometry	Clashes	Electron density
5	SGM	B	501	-	-	-	X
5	SGM	D	501	-	-	-	X

## 2 Entry composition

There are 7 unique types of molecules in this entry. The entry contains 9043 atoms, of which 0 are hydrogens and 0 are deuteriums.

In the tables below, the ZeroOcc column contains the number of atoms modelled with zero occupancy, the AltConf column contains the number of residues with at least one atom in alternate conformation and the Trace column contains the number of residues modelled with at most 2 atoms.

- Molecule 1 is a protein called Cyclin-dependent kinase 2.

Mol	Chain	Residues	Atoms						ZeroOcc	AltConf	Trace
1	A	297	Total	C	N	O	P	S	0	1	0
			2399	1558	410	422	1	8			

There is a discrepancy between the modelled and reference sequences:

Chain	Residue	Modelled	Actual	Comment	Reference
A	0	SER	-	expression tag	UNP P24941

- Molecule 2 is a protein called Cyclin-A2.

Mol	Chain	Residues	Atoms						ZeroOcc	AltConf	Trace
2	B	258	Total	C	N	O	S		0	3	0
			2104	1365	343	384	12				
2	D	257	Total	C	N	O	S		0	0	0
			2076	1345	338	382	11				

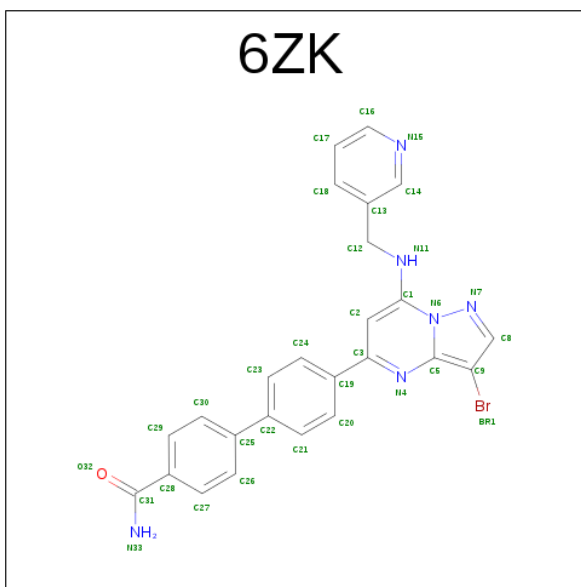
- Molecule 3 is a protein called Cyclin-dependent kinase 2.

Mol	Chain	Residues	Atoms						ZeroOcc	AltConf	Trace
3	C	266	Total	C	N	O	P	S	0	3	0
			2155	1396	371	380	1	7			

There is a discrepancy between the modelled and reference sequences:

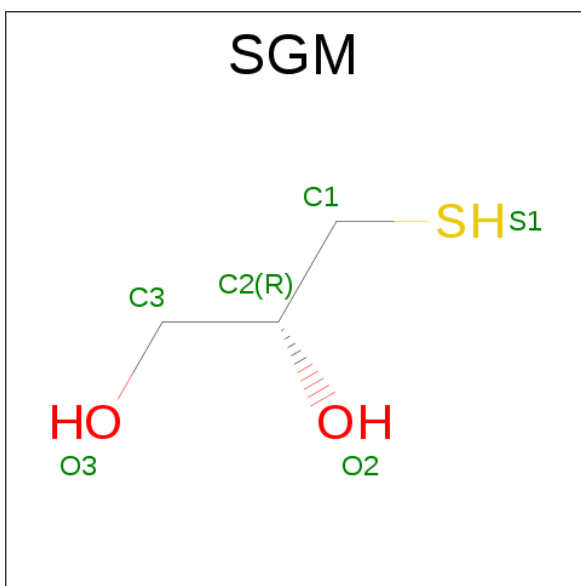
Chain	Residue	Modelled	Actual	Comment	Reference
C	0	SER	-	expression tag	UNP P24941

- Molecule 4 is 4-[4-[3-bromanyl-7-(pyridin-3-ylmethylamino)pyrazolo[1,5-a]pyrimidin-5-yl]phenyl]benzamide (three-letter code: 6ZK) (formula: C<sub>25</sub>H<sub>19</sub>BrN<sub>6</sub>O).



Mol	Chain	Residues	Atoms					ZeroOcc	AltConf
4	A	1	Total	Br	C	N	O	0	0
			33	1	25	6	1		
4	C	1	Total	Br	C	N	O	0	0
			33	1	25	6	1		

- Molecule 5 is MONOTHIOGLYCEROL (three-letter code: SGM) (formula:  $C_3H_8O_2S$ ).



Mol	Chain	Residues	Atoms				ZeroOcc	AltConf
5	B	1	Total	C	O	S	0	0
			6	3	2	1		
5	D	1	Total	C	O	S	0	0
			6	3	2	1		

- Molecule 6 is MAGNESIUM ION (three-letter code: MG) (formula: Mg).

Mol	Chain	Residues	Atoms		ZeroOcc	AltConf
6	B	1	Total 1	Mg 1	0	0

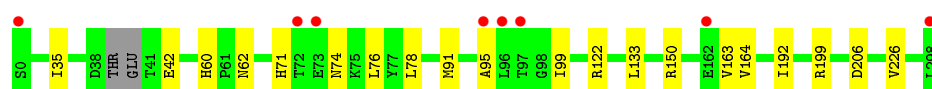
- Molecule 7 is water.

Mol	Chain	Residues	Atoms		ZeroOcc	AltConf
7	A	85	Total 85	O 85	0	0
7	B	73	Total 73	O 73	0	0
7	C	43	Total 43	O 43	0	0
7	D	29	Total 29	O 29	0	0

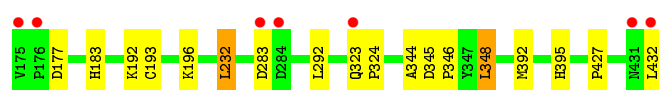
### 3 Residue-property plots [i](#)

These plots are drawn for all protein, RNA and DNA chains in the entry. The first graphic for a chain summarises the proportions of errors displayed in the second graphic. The second graphic shows the sequence view annotated by issues in geometry and electron density. Residues are color-coded according to the number of geometric quality criteria for which they contain at least one outlier: green = 0, yellow = 1, orange = 2 and red = 3 or more. A red dot above a residue indicates a poor fit to the electron density ( $RSRZ > 2$ ). Stretches of 2 or more consecutive residues without any outlier are shown as a green connector. Residues present in the sample, but not in the model, are shown in grey.

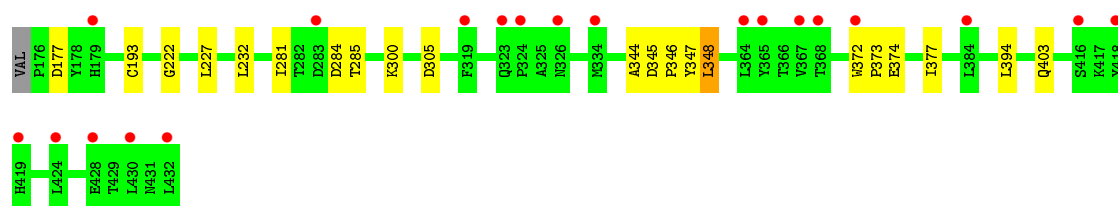
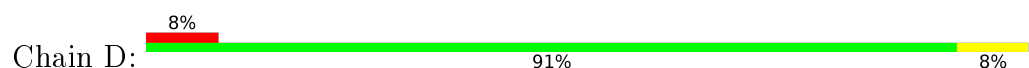
- Molecule 1: Cyclin-dependent kinase 2



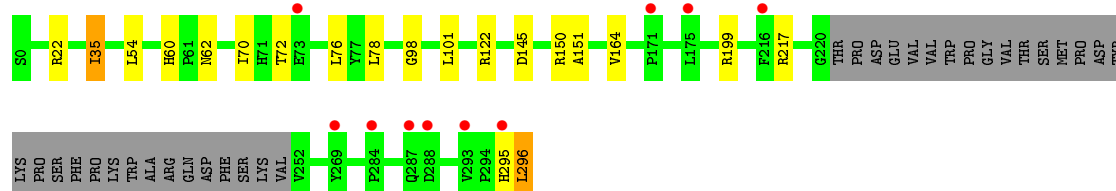
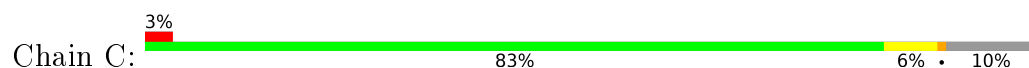
- Molecule 2: Cyclin-A2



- Molecule 2: Cyclin-A2



- Molecule 3: Cyclin-dependent kinase 2



## 4 Data and refinement statistics

Property	Value	Source
Space group	P 21 21 21	Depositor
Cell constants a, b, c, $\alpha$ , $\beta$ , $\gamma$	74.47Å 134.40Å 149.48Å 90.00° 90.00° 90.00°	Depositor
Resolution (Å)	99.94 – 2.40 49.97 – 2.40	Depositor EDS
% Data completeness (in resolution range)	98.1 (99.94-2.40) 98.2 (49.97-2.40)	Depositor EDS
$R_{merge}$	(Not available)	Depositor
$R_{sym}$	(Not available)	Depositor
$\langle I/\sigma(I) \rangle$ <sup>1</sup>	2.54 (at 2.39Å)	Xtriage
Refinement program	REFMAC 5.8.0131	Depositor
R, $R_{free}$	0.212 , 0.249 0.212 , 0.249	Depositor DCC
$R_{free}$ test set	2862 reflections (5.16%)	DCC
Wilson B-factor (Å <sup>2</sup> )	34.4	Xtriage
Anisotropy	0.299	Xtriage
Bulk solvent $k_{sol}$ (e/Å <sup>3</sup> ), $B_{sol}$ (Å <sup>2</sup> )	0.37 , 38.6	EDS
L-test for twinning <sup>2</sup>	$\langle  L  \rangle = 0.48$ , $\langle L^2 \rangle = 0.31$	Xtriage
Estimated twinning fraction	No twinning to report.	Xtriage
$F_o, F_c$ correlation	0.94	EDS
Total number of atoms	9043	wwPDB-VP
Average B, all atoms (Å <sup>2</sup> )	40.0	wwPDB-VP

Xtriage's analysis on translational NCS is as follows: *The largest off-origin peak in the Patterson function is 3.20% of the height of the origin peak. No significant pseudotranslation is detected.*

<sup>1</sup>Intensities estimated from amplitudes.

<sup>2</sup>Theoretical values of  $\langle |L| \rangle$ ,  $\langle L^2 \rangle$  for acentric reflections are 0.5, 0.333 respectively for untwinned datasets, and 0.375, 0.2 for perfectly twinned datasets.



## 5 Model quality

### 5.1 Standard geometry

Bond lengths and bond angles in the following residue types are not validated in this section: 6ZK, TPO, MG, SGM

The Z score for a bond length (or angle) is the number of standard deviations the observed value is removed from the expected value. A bond length (or angle) with  $|Z| > 5$  is considered an outlier worth inspection. RMSZ is the root-mean-square of all Z scores of the bond lengths (or angles).

Mol	Chain	Bond lengths		Bond angles	
		RMSZ	$\# Z  > 5$	RMSZ	$\# Z  > 5$
1	A	0.46	0/2451	0.65	1/3322 (0.0%)
2	B	0.44	0/2161	0.64	1/2933 (0.0%)
2	D	0.43	0/2126	0.62	0/2886
3	C	0.44	0/2201	0.65	1/2978 (0.0%)
All	All	0.44	0/8939	0.64	3/12119 (0.0%)

Chiral center outliers are detected by calculating the chiral volume of a chiral center and verifying if the center is modelled as a planar moiety or with the opposite hand. A planarity outlier is detected by checking planarity of atoms in a peptide group, atoms in a mainchain group or atoms of a sidechain that are expected to be planar.

Mol	Chain	#Chirality outliers	#Planarity outliers
3	C	0	1

There are no bond length outliers.

All (3) bond angle outliers are listed below:

Mol	Chain	Res	Type	Atoms	Z	Observed( $^{\circ}$ )	Ideal( $^{\circ}$ )
3	C	296	LEU	CA-CB-CG	6.00	129.10	115.30
2	B	232	LEU	CA-CB-CG	5.94	128.96	115.30
1	A	78	LEU	CA-CB-CG	5.29	127.46	115.30

There are no chirality outliers.

All (1) planarity outliers are listed below:

Mol	Chain	Res	Type	Group
3	C	70	ILE	Peptide

## 5.2 Too-close contacts ⓘ

In the following table, the Non-H and H(model) columns list the number of non-hydrogen atoms and hydrogen atoms in the chain respectively. The H(added) column lists the number of hydrogen atoms added and optimized by MolProbity. The Clashes column lists the number of clashes within the asymmetric unit, whereas Symm-Clashes lists symmetry related clashes.

Mol	Chain	Non-H	H(model)	H(added)	Clashes	Symm-Clashes
1	A	2399	0	2453	6	0
2	B	2104	0	2135	7	0
2	D	2076	0	2099	8	0
3	C	2155	0	2219	5	0
4	A	33	0	0	0	0
4	C	33	0	0	0	0
5	B	6	0	8	2	0
5	D	6	0	8	2	0
6	B	1	0	0	0	0
7	A	85	0	0	0	0
7	B	73	0	0	1	0
7	C	43	0	0	0	0
7	D	29	0	0	0	0
All	All	9043	0	8922	26	0

The all-atom clashscore is defined as the number of clashes found per 1000 atoms (including hydrogen atoms). The all-atom clashscore for this structure is 1.

All (26) close contacts within the same asymmetric unit are listed below, sorted by their clash magnitude.

Atom-1	Atom-2	Interatomic distance (Å)	Clash overlap (Å)
2:B:193:CYS:SG	5:B:501:SGM:S1	2.53	1.02
2:D:305:ASP:HB3	5:D:501:SGM:H12	1.77	0.66
2:D:193:CYS:SG	5:D:501:SGM:S1	2.65	0.65
1:A:60:HIS:CD2	1:A:62:ASN:H	2.19	0.60
1:A:60:HIS:HD2	1:A:62:ASN:H	1.52	0.56
1:A:71:HIS:CD2	1:A:76:LEU:HD13	2.46	0.51
3:C:98:GLY:HA2	3:C:199:ARG:HD3	1.92	0.51
2:D:374:GLU:HA	2:D:377:ILE:HD12	1.93	0.50
3:C:60:HIS:CD2	3:C:62:ASN:H	2.30	0.49
2:D:344:ALA:HB1	2:D:348:LEU:HD22	1.95	0.49
3:C:35:ILE:HD12	3:C:76:LEU:HB3	1.98	0.46
2:D:345:ASP:HA	2:D:346:PRO:HA	1.72	0.46
2:D:372:TRP:HA	2:D:373:PRO:HD3	1.82	0.46
3:C:54:LEU:HD21	3:C:151:ALA:HB2	1.97	0.45

*Continued on next page...*

Continued from previous page...

Atom-1	Atom-2	Interatomic distance (Å)	Clash overlap (Å)
3:C:60:HIS:HD2	3:C:62:ASN:H	1.63	0.45
2:B:192:LYS:HB3	5:B:501:SGM:H31	1.98	0.45
1:A:133:LEU:HD11	1:A:192:ILE:HD13	1.99	0.45
1:A:91:MET:HG2	1:A:99:ILE:HD11	1.99	0.44
2:B:345:ASP:HA	2:B:346:PRO:HA	1.75	0.43
2:B:344:ALA:HB1	2:B:348:LEU:HD22	1.99	0.43
2:D:347:TYR:OH	2:D:394:LEU:HA	2.19	0.43
1:A:95:ALA:HA	1:A:199:ARG:HE	1.84	0.43
2:B:395:HIS:HE1	2:B:427:PRO:O	2.03	0.42
2:B:183:HIS:HD2	7:B:613:HOH:O	2.04	0.41
2:D:222:GLY:HA2	2:D:227:LEU:HD12	2.03	0.40
2:B:323:GLN:HA	2:B:324:PRO:HA	1.80	0.40

There are no symmetry-related clashes.

## 5.3 Torsion angles ⓘ

### 5.3.1 Protein backbone ⓘ

In the following table, the Percentiles column shows the percent Ramachandran outliers of the chain as a percentile score with respect to all X-ray entries followed by that with respect to entries of similar resolution.

The Analysed column shows the number of residues for which the backbone conformation was analysed, and the total number of residues.

Mol	Chain	Analysed	Favoured	Allowed	Outliers	Percentiles	
1	A	293/299 (98%)	286 (98%)	5 (2%)	2 (1%)	26	38
2	B	259/258 (100%)	257 (99%)	2 (1%)	0	100	100
2	D	255/258 (99%)	251 (98%)	4 (2%)	0	100	100
3	C	264/297 (89%)	254 (96%)	7 (3%)	3 (1%)	17	25
All	All	1071/1112 (96%)	1048 (98%)	18 (2%)	5 (0%)	34	48

All (5) Ramachandran outliers are listed below:

Mol	Chain	Res	Type
1	A	163	VAL
3	C	164	VAL
1	A	164	VAL

Continued on next page...

*Continued from previous page...*

Mol	Chain	Res	Type
3	C	295	HIS
3	C	145	ASP

### 5.3.2 Protein sidechains ⓘ

In the following table, the Percentiles column shows the percent sidechain outliers of the chain as a percentile score with respect to all X-ray entries followed by that with respect to entries of similar resolution.

The Analysed column shows the number of residues for which the sidechain conformation was analysed, and the total number of residues.

Mol	Chain	Analysed	Rotameric	Outliers	Percentiles	
1	A	262/263 (100%)	255 (97%)	7 (3%)	52	73
2	B	235/232 (101%)	226 (96%)	9 (4%)	40	60
2	D	231/232 (100%)	223 (96%)	8 (4%)	43	64
3	C	235/261 (90%)	225 (96%)	10 (4%)	35	55
All	All	963/988 (98%)	929 (96%)	34 (4%)	45	64

All (34) residues with a non-rotameric sidechain are listed below:

Mol	Chain	Res	Type
1	A	35	ILE
1	A	42	GLU
1	A	74	ASN
1	A	122	ARG
1	A	150	ARG
1	A	206	ASP
1	A	226	VAL
2	B	177	ASP
2	B	196[A]	LYS
2	B	196[B]	LYS
2	B	232	LEU
2	B	283	ASP
2	B	292	LEU
2	B	348	LEU
2	B	392	MET
2	B	432	LEU
3	C	22[A]	ARG
3	C	22[B]	ARG
3	C	35	ILE

*Continued on next page...*

*Continued from previous page...*

Mol	Chain	Res	Type
3	C	72	THR
3	C	78	LEU
3	C	101	LEU
3	C	122	ARG
3	C	150	ARG
3	C	217	ARG
3	C	296	LEU
2	D	177	ASP
2	D	232	LEU
2	D	281	ILE
2	D	284	ASP
2	D	285	THR
2	D	300	LYS
2	D	348	LEU
2	D	403	GLN

Some sidechains can be flipped to improve hydrogen bonding and reduce clashes. All (14) such sidechains are listed below:

Mol	Chain	Res	Type
1	A	59	ASN
1	A	60	HIS
1	A	74	ASN
1	A	268	HIS
2	B	183	HIS
2	B	254	GLN
2	B	296	HIS
2	B	395	HIS
3	C	60	HIS
3	C	62	ASN
3	C	268	HIS
2	D	254	GLN
2	D	415	ASN
2	D	431	ASN

### 5.3.3 RNA ⓘ

There are no RNA molecules in this entry.

## 5.4 Non-standard residues in protein, DNA, RNA chains ⓘ

2 non-standard protein/DNA/RNA residues are modelled in this entry.

In the following table, the Counts columns list the number of bonds (or angles) for which Mogul statistics could be retrieved, the number of bonds (or angles) that are observed in the model and the number of bonds (or angles) that are defined in the chemical component dictionary. The Link column lists molecule types, if any, to which the group is linked. The Z score for a bond length (or angle) is the number of standard deviations the observed value is removed from the expected value. A bond length (or angle) with  $|Z| > 2$  is considered an outlier worth inspection. RMSZ is the root-mean-square of all Z scores of the bond lengths (or angles).

Mol	Type	Chain	Res	Link	Bond lengths			Bond angles		
					Counts	RMSZ	$\# Z  > 2$	Counts	RMSZ	$\# Z  > 2$
1	TPO	A	160	1	7,10,11	0.71	0	10,14,16	1.18	0
3	TPO	C	160	3	7,10,11	0.66	0	10,14,16	1.21	0

In the following table, the Chirals column lists the number of chiral outliers, the number of chiral centers analysed, the number of these observed in the model and the number defined in the chemical component dictionary. Similar counts are reported in the Torsion and Rings columns. '-' means no outliers of that kind were identified.

Mol	Type	Chain	Res	Link	Chirals	Torsions	Rings
1	TPO	A	160	1	-	0/8/11/13	0/0/0/0
3	TPO	C	160	3	-	0/8/11/13	0/0/0/0

There are no bond length outliers.

There are no bond angle outliers.

There are no chirality outliers.

There are no torsion outliers.

There are no ring outliers.

No monomer is involved in short contacts.

## 5.5 Carbohydrates ⓘ

There are no carbohydrates in this entry.

## 5.6 Ligand geometry ⓘ

Of 5 ligands modelled in this entry, 1 is monoatomic - leaving 4 for Mogul analysis.

In the following table, the Counts columns list the number of bonds (or angles) for which Mogul statistics could be retrieved, the number of bonds (or angles) that are observed in the model and the number of bonds (or angles) that are defined in the chemical component dictionary. The Link column lists molecule types, if any, to which the group is linked. The Z score for a bond length (or angle) is the number of standard deviations the observed value is removed from the expected value. A bond length (or angle) with  $|Z| > 2$  is considered an outlier worth inspection. RMSZ is the root-mean-square of all Z scores of the bond lengths (or angles).

Mol	Type	Chain	Res	Link	Bond lengths			Bond angles		
					Counts	RMSZ	$\# Z  > 2$	Counts	RMSZ	$\# Z  > 2$
4	6ZK	A	301	-	31,37,37	1.09	2 (6%)	42,52,52	1.63	9 (21%)
5	SGM	B	501	-	5,5,5	0.35	0	5,5,5	0.64	0
4	6ZK	C	301	-	31,37,37	1.04	2 (6%)	42,52,52	1.45	7 (16%)
5	SGM	D	501	-	5,5,5	0.30	0	5,5,5	0.89	0

In the following table, the Chirals column lists the number of chiral outliers, the number of chiral centers analysed, the number of these observed in the model and the number defined in the chemical component dictionary. Similar counts are reported in the Torsion and Rings columns. '-' means no outliers of that kind were identified.

Mol	Type	Chain	Res	Link	Chirals	Torsions	Rings
4	6ZK	A	301	-	-	0/17/17/17	0/5/5/5
5	SGM	B	501	-	-	0/4/4/4	0/0/0/0
4	6ZK	C	301	-	-	0/17/17/17	0/5/5/5
5	SGM	D	501	-	-	0/4/4/4	0/0/0/0

All (4) bond length outliers are listed below:

Mol	Chain	Res	Type	Atoms	Z	Observed(Å)	Ideal(Å)
4	C	301	6ZK	C3-N4	2.06	1.36	1.33
4	A	301	6ZK	C3-N4	2.07	1.36	1.33
4	C	301	6ZK	BR1-C9	3.57	1.99	1.90
4	A	301	6ZK	BR1-C9	3.84	2.00	1.90

All (16) bond angle outliers are listed below:

Mol	Chain	Res	Type	Atoms	Z	Observed(°)	Ideal(°)
4	C	301	6ZK	C2-C3-N4	-4.03	118.99	122.24
4	A	301	6ZK	C26-C25-C22	-3.89	114.91	121.40
4	A	301	6ZK	C2-C3-N4	-3.50	119.42	122.24
4	A	301	6ZK	C21-C22-C25	-2.89	116.57	121.40
4	C	301	6ZK	C30-C25-C22	-2.46	117.29	121.40
4	A	301	6ZK	C20-C19-C3	-2.44	117.28	121.30
4	A	301	6ZK	C13-C14-N15	-2.15	119.84	123.72

*Continued on next page...*

*Continued from previous page...*

Mol	Chain	Res	Type	Atoms	Z	Observed(°)	Ideal(°)
4	C	301	6ZK	C13-C14-N15	-2.07	119.99	123.72
4	C	301	6ZK	C21-C22-C25	-2.03	118.01	121.40
4	A	301	6ZK	C30-C25-C22	2.24	125.15	121.40
4	C	301	6ZK	C8-N7-N6	2.38	107.40	103.81
4	A	301	6ZK	C8-N7-N6	2.40	107.43	103.81
4	C	301	6ZK	C16-N15-C14	2.63	121.65	116.82
4	A	301	6ZK	C16-N15-C14	2.67	121.73	116.82
4	C	301	6ZK	N11-C1-N6	3.22	120.70	117.28
4	A	301	6ZK	N11-C1-N6	3.81	121.33	117.28

There are no chirality outliers.

There are no torsion outliers.

There are no ring outliers.

2 monomers are involved in 4 short contacts:

Mol	Chain	Res	Type	Clashes	Symm-Clashes
5	B	501	SGM	2	0
5	D	501	SGM	2	0

## 5.7 Other polymers [i](#)

There are no such residues in this entry.

## 5.8 Polymer linkage issues [i](#)

There are no chain breaks in this entry.



## 6 Fit of model and data ⓘ

### 6.1 Protein, DNA and RNA chains ⓘ

In the following table, the column labelled ‘#RSRZ> 2’ contains the number (and percentage) of RSRZ outliers, followed by percent RSRZ outliers for the chain as percentile scores relative to all X-ray entries and entries of similar resolution. The OWAB column contains the minimum, median, 95<sup>th</sup> percentile and maximum values of the occupancy-weighted average B-factor per residue. The column labelled ‘Q< 0.9’ lists the number of (and percentage) of residues with an average occupancy less than 0.9.

Mol	Chain	Analysed	<RSRZ>	#RSRZ>2	OWAB(Å <sup>2</sup> )	Q<0.9
1	A	296/299 (98%)	-0.12	8 (2%) 58 57	19, 28, 61, 85	0
2	B	258/258 (100%)	-0.11	7 (2%) 58 57	20, 31, 53, 75	0
2	D	257/258 (99%)	0.42	20 (7%) 16 15	25, 45, 84, 99	0
3	C	265/297 (89%)	0.23	10 (3%) 44 45	26, 45, 69, 83	0
All	All	1076/1112 (96%)	0.10	45 (4%) 40 41	19, 37, 72, 99	0

All (45) RSRZ outliers are listed below:

Mol	Chain	Res	Type	RSRZ
2	D	323	GLN	5.2
1	A	96	LEU	4.5
2	D	372	TRP	3.7
2	B	432	LEU	3.6
2	D	419	HIS	3.5
2	D	364	LEU	3.5
1	A	97	THR	3.4
2	D	432	LEU	3.4
2	B	176	PRO	3.3
2	D	416	SER	3.3
2	B	323	GLN	3.2
2	D	367	VAL	3.0
2	B	431	ASN	2.9
2	D	179	HIS	2.9
3	C	287	GLN	2.9
3	C	175	LEU	2.8
2	D	424	LEU	2.7
2	D	428	GLU	2.6
1	A	72	THR	2.6
1	A	298	LEU	2.6
2	B	175	VAL	2.6

*Continued on next page...*

*Continued from previous page...*

Mol	Chain	Res	Type	RSRZ
2	B	283	ASP	2.6
1	A	0	SER	2.5
2	D	326	ASN	2.5
1	A	95	ALA	2.4
2	D	418	TYR	2.4
2	D	368	THR	2.4
1	A	73	GLU	2.4
1	A	162	GLU	2.3
3	C	171	PRO	2.2
3	C	269	TYR	2.2
2	D	319	PHE	2.2
3	C	216	PHE	2.2
2	D	324	PRO	2.2
3	C	284	PRO	2.2
3	C	293	VAL	2.2
2	D	365	TYR	2.1
2	B	284	ASP	2.1
3	C	73	GLU	2.1
2	D	334	MET	2.1
2	D	430	LEU	2.1
2	D	384	LEU	2.1
3	C	288	ASP	2.0
2	D	283	ASP	2.0
3	C	295	HIS	2.0

## 6.2 Non-standard residues in protein, DNA, RNA chains [i](#)

In the following table, the Atoms column lists the number of modelled atoms in the group and the number defined in the chemical component dictionary. LLDF column lists the quality of electron density of the group with respect to its neighbouring residues in protein, DNA or RNA chains. The B-factors column lists the minimum, median, 95<sup>th</sup> percentile and maximum values of B factors of atoms in the group. The column labelled 'Q< 0.9' lists the number of atoms with occupancy less than 0.9.

Mol	Type	Chain	Res	Atoms	RSCC	RSR	LLDF	B-factors(Å <sup>2</sup> )	Q<0.9
1	TPO	A	160	11/12	0.99	0.12	-	27,28,31,32	0
3	TPO	C	160	11/12	0.97	0.15	-	43,46,51,52	0

## 6.3 Carbohydrates [i](#)

There are no carbohydrates in this entry.

## 6.4 Ligands [i](#)

In the following table, the Atoms column lists the number of modelled atoms in the group and the number defined in the chemical component dictionary. LLDF column lists the quality of electron density of the group with respect to its neighbouring residues in protein, DNA or RNA chains. The B-factors column lists the minimum, median, 95<sup>th</sup> percentile and maximum values of B factors of atoms in the group. The column labelled 'Q< 0.9' lists the number of atoms with occupancy less than 0.9.

Mol	Type	Chain	Res	Atoms	RSCC	RSR	LLDF	B-factors(Å <sup>2</sup> )	Q<0.9
5	SGM	D	501	6/6	0.88	0.27	6.51	47,49,52,56	0
5	SGM	B	501	6/6	0.94	0.24	4.33	37,40,41,45	0
4	6ZK	C	301	33/33	0.98	0.16	0.47	32,43,68,69	0
4	6ZK	A	301	33/33	0.98	0.16	0.00	25,33,44,45	0
6	MG	B	502	1/1	0.92	0.10	-0.92	48,48,48,48	0

## 6.5 Other polymers [i](#)

There are no such residues in this entry.