



Full wwPDB X-ray Structure Validation Report ⓘ

Jan 31, 2016 – 08:43 PM GMT

PDB ID : 1LNU
Title : CRYSTAL STRUCTURE OF CLASS II MHC MOLECULE IAb BOUND TO
EALPHA3K PEPTIDE
Authors : Liu, X.; Dai, S.; Crawford, F.; Fruge, R.; Marrack, P.; Kappler, J.
Deposited on : 2002-05-03
Resolution : 2.50 Å(reported)

This is a Full wwPDB X-ray Structure Validation Report for a publicly released PDB entry.
We welcome your comments at validation@mail.wwpdb.org
A user guide is available at
<http://wwpdb.org/validation/2016/XrayValidationReportHelp>
with specific help available everywhere you see the ⓘ symbol.

The following versions of software and data (see [references ⓘ](#)) were used in the production of this report:

MolProbity : 4.02b-467
Mogul : 1.7 (RC4), CSD as536be (2015)
Xtriage (Phenix) : 1.9-1692
EDS : rb-20026688
Percentile statistics : 20151230.v01 (using entries in the PDB archive December 30th 2015)
Refmac : 5.8.0135
CCP4 : 6.5.0
Ideal geometry (proteins) : Engh & Huber (2001)
Ideal geometry (DNA, RNA) : Parkinson et al. (1996)
Validation Pipeline (wwPDB-VP) : trunk26865

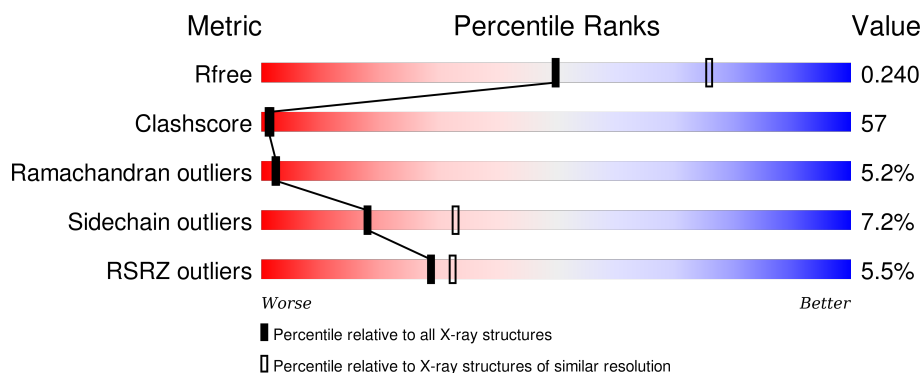
1 Overall quality at a glance

The following experimental techniques were used to determine the structure:

X-RAY DIFFRACTION

The reported resolution of this entry is 2.50 Å.

Percentile scores (ranging between 0-100) for global validation metrics of the entry are shown in the following graphic. The table shows the number of entries on which the scores are based.



Metric	Whole archive (#Entries)	Similar resolution (#Entries, resolution range(Å))
R_{free}	91344	3553 (2.50-2.50)
Clashscore	102246	4242 (2.50-2.50)
Ramachandran outliers	100387	4156 (2.50-2.50)
Sidechain outliers	100360	4158 (2.50-2.50)
RSRZ outliers	91569	3562 (2.50-2.50)

The table below summarises the geometric issues observed across the polymeric chains and their fit to the electron density. The red, orange, yellow and green segments on the lower bar indicate the fraction of residues that contain outliers for ≥ 3 , 2, 1 and 0 types of geometric quality criteria. A grey segment represents the fraction of residues that are not modelled. The numeric value for each fraction is indicated below the corresponding segment, with a dot representing fractions $\leq 5\%$. The upper red bar (where present) indicates the fraction of residues that have poor fit to the electron density. The numeric value is given above the bar.

Mol	Chain	Length	Quality of chain
1	A	182	<div> <div>3%</div> <div>38% 55% 7%</div> </div>
1	C	182	<div> <div>30% 63% 7%</div> </div>
1	E	182	<div> <div>30% 62% 8%</div> </div>
1	G	182	<div> <div>3% 34% 58% 7%</div> </div>
2	B	217	<div> <div>6% 34% 56% 9%</div> </div>

Continued on next page...

Continued from previous page...

Mol	Chain	Length	Quality of chain
2	D	217	
2	F	217	
2	H	217	

The following table lists non-polymeric compounds, carbohydrate monomers and non-standard residues in protein, DNA, RNA chains that are outliers for geometric or electron-density-fit criteria:

Mol	Type	Chain	Res	Chirality	Geometry	Clashes	Electron density
3	NAG	E	308	-	-	-	X
3	NAG	G	310	-	-	X	-

2 Entry composition

There are 5 unique types of molecules in this entry. The entry contains 13265 atoms, of which 0 are hydrogens and 0 are deuteriums.

In the tables below, the ZeroOcc column contains the number of atoms modelled with zero occupancy, the AltConf column contains the number of residues with at least one atom in alternate conformation and the Trace column contains the number of residues modelled with at most 2 atoms.

- Molecule 1 is a protein called H-2 class II histocompatibility antigen, A-B alpha chain.

Mol	Chain	Residues	Atoms					ZeroOcc	AltConf	Trace
1	A	182	Total	C	N	O	S	0	0	0
			1459	944	230	282	3			
1	C	182	Total	C	N	O	S	0	0	0
			1459	944	230	282	3			
1	E	182	Total	C	N	O	S	0	0	0
			1459	944	230	282	3			
1	G	182	Total	C	N	O	S	0	0	0
			1459	944	230	282	3			

- Molecule 2 is a protein called H-2 class II histocompatibility antigen, A beta chain.

Mol	Chain	Residues	Atoms					ZeroOcc	AltConf	Trace
2	B	217	Total	C	N	O	S	0	0	0
			1756	1094	322	333	7			
2	D	217	Total	C	N	O	S	0	0	0
			1756	1094	322	333	7			
2	F	217	Total	C	N	O	S	0	0	0
			1756	1094	322	333	7			
2	H	217	Total	C	N	O	S	0	0	0
			1756	1094	322	333	7			

There are 4 discrepancies between the modelled and reference sequences:

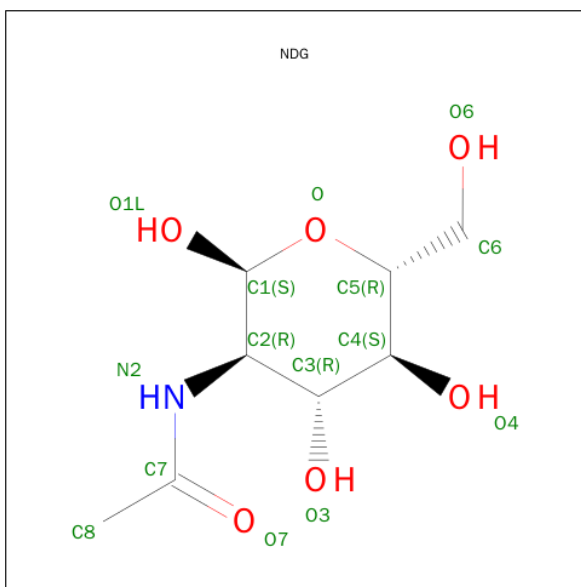
Chain	Residue	Modelled	Actual	Comment	Reference
B	216	LYS	ARG	CONFLICT	UNP P14483
D	216	LYS	ARG	CONFLICT	UNP P14483
F	216	LYS	ARG	CONFLICT	UNP P14483
H	216	LYS	ARG	CONFLICT	UNP P14483

- Molecule 3 is NAG, N-acetyl-D-glucosamine (three-letter code: NAG) (formula: C₈H₁₅NO₆).



Mol	Chain	Residues	Atoms				ZeroOcc	AltConf
3	A	1	Total	C	N	O	0	0
			14	8	1	5		
3	A	1	Total	C	N	O	0	0
			14	8	1	5		
3	B	1	Total	C	N	O	0	0
			14	8	1	5		
3	C	1	Total	C	N	O	0	0
			14	8	1	5		
3	C	1	Total	C	N	O	0	0
			14	8	1	5		
3	D	1	Total	C	N	O	0	0
			14	8	1	5		
3	E	1	Total	C	N	O	0	0
			14	8	1	5		
3	E	1	Total	C	N	O	0	0
			14	8	1	5		
3	F	1	Total	C	N	O	0	0
			14	8	1	5		
3	G	1	Total	C	N	O	0	0
			14	8	1	5		
3	H	1	Total	C	N	O	0	0
			14	8	1	5		

- Molecule 4 is SUGAR (2-(ACETYLAMINO)-2-DEOXY-A-D-GLUCOPYRANOSE) (three-letter code: NDG) (formula: C₈H₁₅NO₆).



Mol	Chain	Residues	Atoms				ZeroOcc	AltConf
4	G	1	Total	C	N	O	0	0
			14	8	1	5		

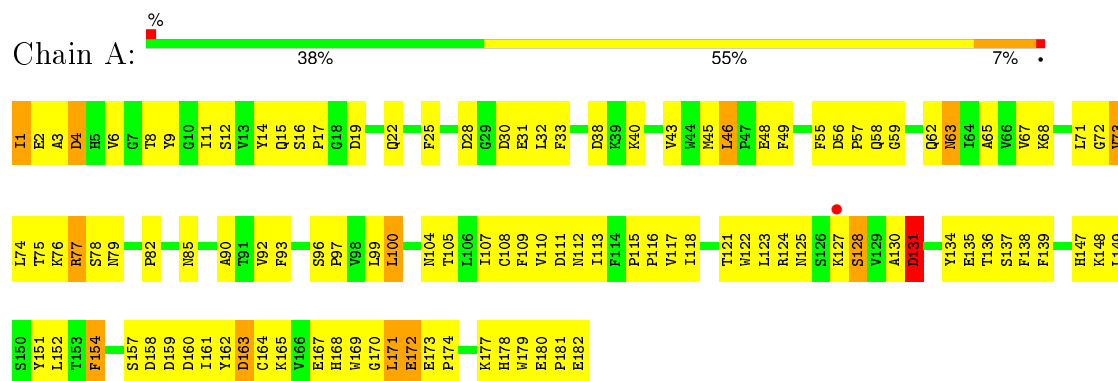
- Molecule 5 is water.

Mol	Chain	Residues	Atoms		ZeroOcc	AltConf
5	A	31	Total	O	0	0
			31	31		
5	B	35	Total	O	0	0
			35	35		
5	C	29	Total	O	0	0
			29	29		
5	D	26	Total	O	0	0
			26	26		
5	E	24	Total	O	0	0
			24	24		
5	F	42	Total	O	0	0
			42	42		
5	G	21	Total	O	0	0
			21	21		
5	H	29	Total	O	0	0
			29	29		

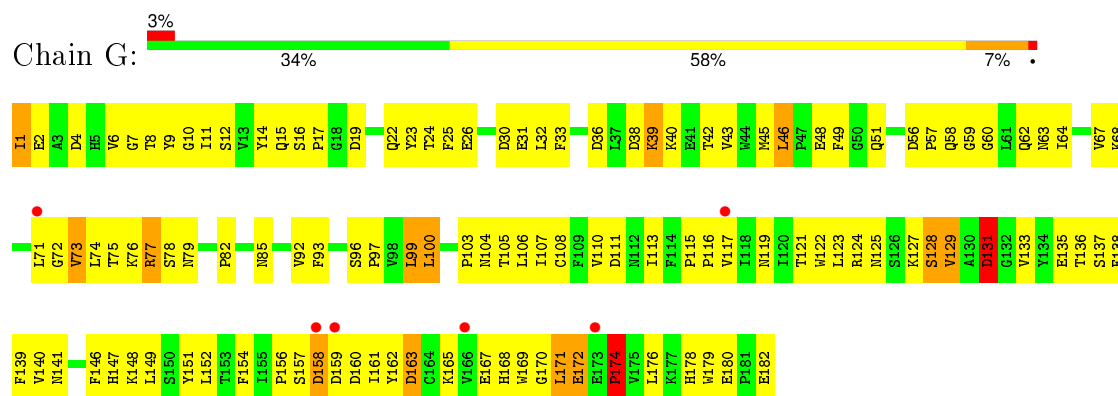
3 Residue-property plots

These plots are drawn for all protein, RNA and DNA chains in the entry. The first graphic for a chain summarises the proportions of errors displayed in the second graphic. The second graphic shows the sequence view annotated by issues in geometry and electron density. Residues are color-coded according to the number of geometric quality criteria for which they contain at least one outlier: green = 0, yellow = 1, orange = 2 and red = 3 or more. A red dot above a residue indicates a poor fit to the electron density ($RSRZ > 2$). Stretches of 2 or more consecutive residues without any outlier are shown as a green connector. Residues present in the sample, but not in the model, are shown in grey.

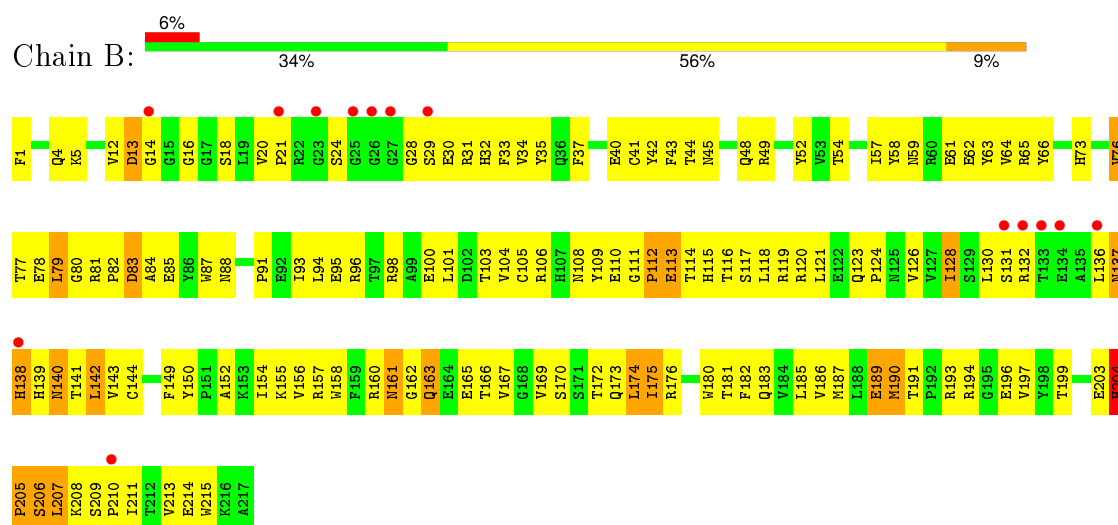
- Molecule 1: H-2 class II histocompatibility antigen, A-B alpha chain



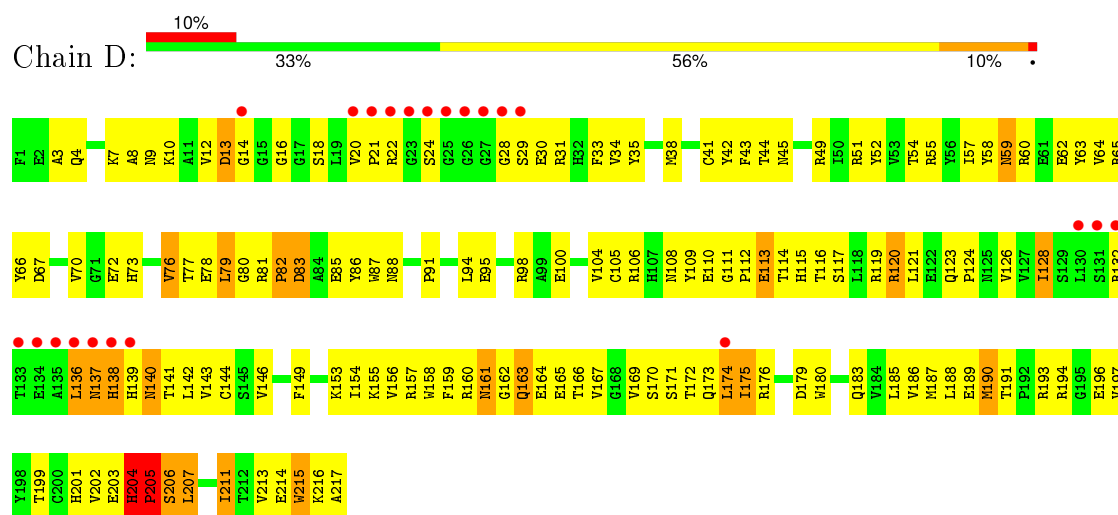
- Molecule 1: H-2 class II histocompatibility antigen, A-B alpha chain



- Molecule 2: H-2 class II histocompatibility antigen, A beta chain

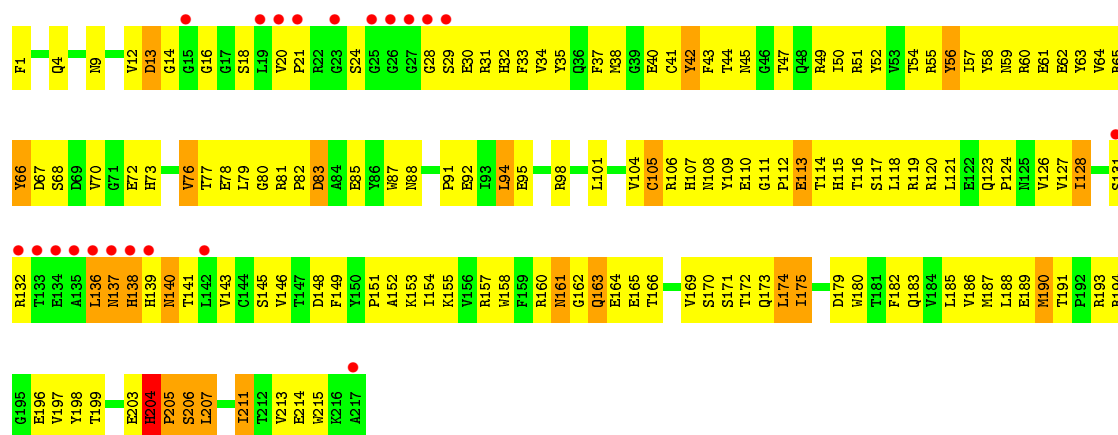


- Molecule 2: H-2 class II histocompatibility antigen, A beta chain

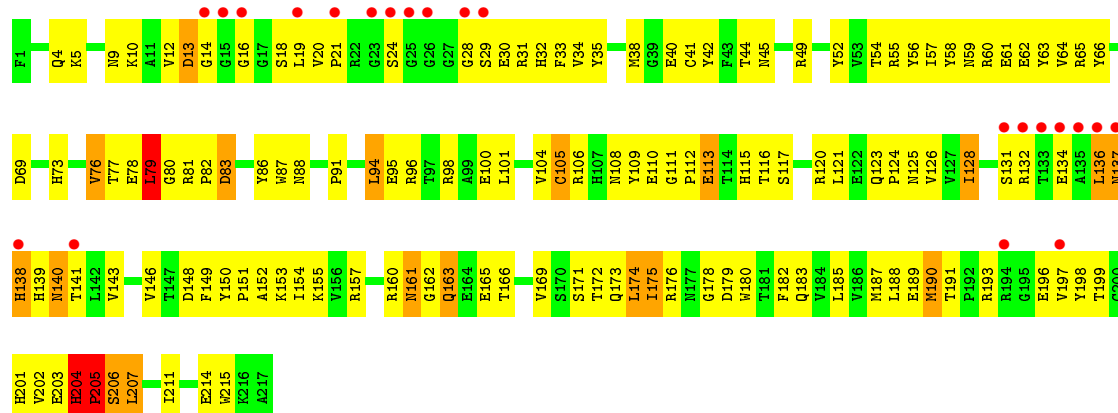


- Molecule 2: H-2 class II histocompatibility antigen, A beta chain





• Molecule 2: H-2 class II histocompatibility antigen, A beta chain



4 Data and refinement statistics

Property	Value	Source
Space group	P 1 21 1	Depositor
Cell constants a, b, c, α , β , γ	65.04Å 274.18Å 65.12Å 90.00° 111.42° 90.00°	Depositor
Resolution (Å)	38.39 – 2.50 46.34 – 2.50	Depositor EDS
% Data completeness (in resolution range)	74.8 (38.39-2.50) 74.8 (46.34-2.50)	Depositor EDS
R_{merge}	0.09	Depositor
R_{sym}	(Not available)	Depositor
$\langle I/\sigma(I) \rangle$ ¹	3.28 (at 2.51Å)	Xtriage
Refinement program	CNS 1.0	Depositor
R, R_{free}	0.211 , 0.245 0.204 , 0.240	Depositor DCC
R_{free} test set	2621 reflections (5.05%)	DCC
Wilson B-factor (Å ²)	21.0	Xtriage
Anisotropy	0.170	Xtriage
Bulk solvent k_{sol} (e/Å ³), B_{sol} (Å ²)	0.34 , 31.8	EDS
Estimated twinning fraction	0.427 for l,-k,h	Xtriage
L-test for twinning ²	$\langle L \rangle = 0.26$, $\langle L^2 \rangle = 0.11$	Xtriage
Outliers	0 of 54500 reflections	Xtriage
F_o, F_c correlation	0.82	EDS
Total number of atoms	13265	wwPDB-VP
Average B, all atoms (Å ²)	18.0	wwPDB-VP

Xtriage's analysis on translational NCS is as follows: *The largest off-origin peak in the Patterson function is 1.82% of the height of the origin peak. No significant pseudotranslation is detected.*

¹Intensities estimated from amplitudes.

²Theoretical values of $\langle |L| \rangle$, $\langle L^2 \rangle$ for acentric reflections are 0.5, 0.375 respectively for untwinned datasets, and 0.333, 0.2 for perfectly twinned datasets.

5 Model quality ⓘ

5.1 Standard geometry ⓘ

Bond lengths and bond angles in the following residue types are not validated in this section: NAG, NDG

The Z score for a bond length (or angle) is the number of standard deviations the observed value is removed from the expected value. A bond length (or angle) with $|Z| > 5$ is considered an outlier worth inspection. RMSZ is the root-mean-square of all Z scores of the bond lengths (or angles).

Mol	Chain	Bond lengths		Bond angles	
		RMSZ	$\# Z > 5$	RMSZ	$\# Z > 5$
1	A	0.53	0/1504	0.73	0/2054
1	C	0.51	0/1504	0.73	0/2054
1	E	0.56	0/1504	0.71	0/2054
1	G	0.55	0/1504	0.73	0/2054
2	B	0.53	0/1798	0.75	2/2435 (0.1%)
2	D	0.57	1/1798 (0.1%)	0.74	1/2435 (0.0%)
2	F	0.54	0/1798	0.74	1/2435 (0.0%)
2	H	0.54	0/1798	0.75	3/2435 (0.1%)
All	All	0.54	1/13208 (0.0%)	0.74	7/17956 (0.0%)

Chiral center outliers are detected by calculating the chiral volume of a chiral center and verifying if the center is modelled as a planar moiety or with the opposite hand. A planarity outlier is detected by checking planarity of atoms in a peptide group, atoms in a mainchain group or atoms of a sidechain that are expected to be planar.

Mol	Chain	#Chirality outliers	#Planarity outliers
2	F	0	1

All (1) bond length outliers are listed below:

Mol	Chain	Res	Type	Atoms	Z	Observed(Å)	Ideal(Å)
2	D	215	TRP	CB-CG	-6.23	1.39	1.50

All (7) bond angle outliers are listed below:

Mol	Chain	Res	Type	Atoms	Z	Observed(°)	Ideal(°)
2	B	204	HIS	N-CA-C	5.61	126.14	111.00
2	H	79	LEU	CA-CB-CG	5.52	128.00	115.30
2	F	204	HIS	N-CA-C	5.49	125.83	111.00
2	H	105	CYS	CA-CB-SG	-5.38	104.32	114.00

Continued on next page...

Continued from previous page...

Mol	Chain	Res	Type	Atoms	Z	Observed(°)	Ideal(°)
2	D	204	HIS	N-CA-C	5.20	125.04	111.00
2	H	204	HIS	N-CA-C	5.06	124.66	111.00
2	B	79	LEU	CA-CB-CG	5.01	126.81	115.30

There are no chirality outliers.

All (1) planarity outliers are listed below:

Mol	Chain	Res	Type	Group
2	F	66	TYR	Sidechain

5.2 Too-close contacts

In the following table, the Non-H and H(model) columns list the number of non-hydrogen atoms and hydrogen atoms in the chain respectively. The H(added) column lists the number of hydrogen atoms added and optimized by MolProbity. The Clashes column lists the number of clashes within the asymmetric unit, whereas Symm-Clashes lists symmetry related clashes.

Mol	Chain	Non-H	H(model)	H(added)	Clashes	Symm-Clashes
1	A	1459	0	1384	148	0
1	C	1459	0	1384	159	0
1	E	1459	0	1384	163	0
1	G	1459	0	1382	167	0
2	B	1756	0	1682	232	1
2	D	1756	0	1681	212	0
2	F	1756	0	1682	219	0
2	H	1756	0	1681	236	1
3	A	28	0	26	8	0
3	B	14	0	13	1	0
3	C	28	0	26	5	0
3	D	14	0	13	2	0
3	E	28	0	26	4	0
3	F	14	0	13	3	0
3	G	14	0	13	7	0
3	H	14	0	13	1	0
4	G	14	0	13	3	0
5	A	31	0	0	12	0
5	B	35	0	0	24	0
5	C	29	0	0	15	0
5	D	26	0	0	12	0
5	E	24	0	0	16	0
5	F	42	0	0	29	0

Continued on next page...

Continued from previous page...

Mol	Chain	Non-H	H(model)	H(added)	Clashes	Symm-Clashes
5	G	21	0	0	22	0
5	H	29	0	0	18	0
All	All	13265	0	12416	1438	1

The all-atom clashscore is defined as the number of clashes found per 1000 atoms (including hydrogen atoms). The all-atom clashscore for this structure is 57.

All (1438) close contacts within the same asymmetric unit are listed below, sorted by their clash magnitude.

Atom-1	Atom-2	Interatomic distance (Å)	Clash overlap (Å)
1:C:125:ASN:HD21	1:C:160:ASP:HB2	1.14	1.11
1:A:125:ASN:HD21	1:A:160:ASP:HB2	1.10	1.10
1:G:168:HIS:H	1:G:171:LEU:HD11	1.12	1.09
2:D:41:CYS:HB3	2:D:52:TYR:HD1	1.18	1.08
5:E:330:HOH:O	2:F:42:TYR:HA	1.51	1.08
1:E:125:ASN:HD21	1:E:160:ASP:HB2	1.14	1.06
2:D:116:THR:HG23	2:D:117:SER:H	1.19	1.04
1:C:180:GLU:OE2	1:C:182:GLU:HB2	1.59	1.02
2:H:88:ASN:HA	2:H:94:LEU:HD13	1.39	1.02
2:B:116:THR:HG23	2:B:117:SER:H	1.24	1.02
2:H:69:ASP:HB2	5:H:341:HOH:O	1.57	1.01
1:E:6:VAL:HA	5:E:330:HOH:O	1.60	1.01
2:B:20:VAL:HA	5:B:335:HOH:O	1.60	0.98
1:A:79:ASN:HB2	2:B:18:SER:HA	1.45	0.98
1:E:161:ILE:HG22	1:E:180:GLU:HG3	1.44	0.97
1:E:96:SER:HB2	1:E:97:PRO:HD2	1.46	0.97
3:G:310:NAG:O5	2:H:18:SER:HB2	1.64	0.97
1:E:168:HIS:H	1:E:171:LEU:HD11	1.27	0.96
2:F:88:ASN:HA	2:F:94:LEU:HD13	1.47	0.96
2:B:41:CYS:HB3	2:B:52:TYR:HD1	1.30	0.96
2:B:62:GLU:HG2	2:B:76:VAL:HG11	1.48	0.96
2:F:55:ARG:HB3	5:F:319:HOH:O	1.67	0.95
1:A:12:SER:HB3	1:A:67:VAL:HG21	1.46	0.95
1:C:125:ASN:ND2	1:C:160:ASP:HB2	1.80	0.94
2:D:62:GLU:HG2	2:D:76:VAL:HG11	1.50	0.94
2:B:21:PRO:HD3	5:B:335:HOH:O	1.68	0.93
1:G:167:GLU:HG2	1:G:174:PRO:HG3	1.50	0.93
2:F:136:LEU:HD11	2:F:191:THR:HG23	1.47	0.93
2:F:116:THR:HG23	2:F:117:SER:H	1.35	0.92
2:H:136:LEU:HD11	2:H:191:THR:HG23	1.52	0.92
1:E:67:VAL:HG13	2:F:35:TYR:HD2	1.33	0.92

Continued on next page...

Continued from previous page...

Atom-1	Atom-2	Interatomic distance (Å)	Clash overlap (Å)
2:F:62:GLU:HG2	2:F:76:VAL:HG11	1.53	0.91
2:B:100:GLU:HG2	2:B:104:VAL:HG21	1.53	0.91
2:D:116:THR:HG23	2:D:117:SER:N	1.86	0.91
2:F:123:GLN:HG2	2:F:206:SER:HB2	1.50	0.91
2:D:136:LEU:HD11	2:D:191:THR:HG23	1.53	0.90
1:A:125:ASN:ND2	1:A:160:ASP:HB2	1.86	0.89
2:B:136:LEU:HA	5:B:336:HOH:O	1.72	0.89
1:C:72:GLY:O	1:C:76:LYS:HG3	1.71	0.89
1:G:96:SER:HB2	1:G:97:PRO:HD2	1.56	0.89
1:G:15:GLN:HG2	2:H:34:VAL:HG22	1.55	0.88
2:B:94:LEU:HD21	2:B:98:ARG:HH21	1.36	0.88
1:G:79:ASN:HB2	2:H:18:SER:HA	1.52	0.88
2:F:41:CYS:HB3	2:F:52:TYR:HD1	1.34	0.88
1:E:161:ILE:HG21	1:E:180:GLU:OE1	1.73	0.87
1:C:99:LEU:HA	5:C:329:HOH:O	1.73	0.87
1:C:15:GLN:HG2	2:D:34:VAL:HG22	1.54	0.87
2:D:116:THR:CG2	2:D:117:SER:H	1.87	0.87
2:B:116:THR:HG23	2:B:117:SER:N	1.88	0.87
1:C:79:ASN:HB2	2:D:18:SER:HA	1.57	0.87
1:C:15:GLN:CG	2:D:34:VAL:HG22	2.05	0.86
2:H:116:THR:HG23	2:H:117:SER:H	1.40	0.86
2:B:116:THR:CG2	2:B:117:SER:H	1.87	0.86
2:F:120:ARG:HH12	2:F:180:TRP:HB3	1.41	0.86
1:A:180:GLU:OE2	1:A:182:GLU:HB2	1.75	0.86
1:A:93:PHE:CE2	1:A:107:ILE:HD12	2.10	0.86
2:H:161:ASN:HB3	2:H:197:VAL:H	1.41	0.86
2:D:41:CYS:HB3	2:D:52:TYR:CD1	2.10	0.86
2:H:63:TYR:CD2	2:H:64:VAL:HG23	2.11	0.86
1:E:125:ASN:ND2	1:E:160:ASP:HB2	1.91	0.85
2:H:155:LYS:HD2	2:H:157:ARG:HH21	1.42	0.85
2:H:134:GLU:HA	5:H:330:HOH:O	1.76	0.84
2:D:94:LEU:HD21	2:D:98:ARG:HH21	1.40	0.84
1:C:15:GLN:OE1	1:C:116:PRO:HG2	1.76	0.84
2:H:153:LYS:NZ	2:H:204:HIS:HD2	1.75	0.84
1:A:122:TRP:NE1	1:A:152:LEU:HB2	1.91	0.84
2:H:62:GLU:HG2	2:H:76:VAL:HG11	1.59	0.84
2:H:41:CYS:HB3	2:H:52:TYR:HD1	1.40	0.84
2:D:204:HIS:ND1	2:D:205:PRO:N	2.25	0.83
1:G:72:GLY:O	1:G:76:LYS:HG3	1.79	0.83
1:G:73:VAL:HG13	2:H:14:GLY:HA3	1.60	0.83
1:A:55:PHE:O	1:A:57:PRO:HD3	1.78	0.83

Continued on next page...

Continued from previous page...

Atom-1	Atom-2	Interatomic distance (Å)	Clash overlap (Å)
2:F:120:ARG:NH1	2:F:180:TRP:HB3	1.92	0.83
2:H:174:LEU:H	2:H:174:LEU:HD23	1.44	0.83
2:B:161:ASN:HB3	2:B:197:VAL:H	1.43	0.83
2:F:91:PRO:HD2	5:F:348:HOH:O	1.78	0.83
2:D:120:ARG:HH11	2:D:120:ARG:HG2	1.42	0.83
2:D:63:TYR:CD2	2:D:64:VAL:HG23	2.13	0.83
1:A:167:GLU:HB3	3:A:302:NAG:H81	1.61	0.83
1:G:168:HIS:N	1:G:171:LEU:HD11	1.94	0.82
1:A:168:HIS:H	1:A:171:LEU:HD11	1.42	0.82
1:E:72:GLY:O	1:E:76:LYS:HG3	1.79	0.82
1:A:73:VAL:HG13	2:B:14:GLY:HA3	1.61	0.82
1:E:55:PHE:O	1:E:57:PRO:HD3	1.79	0.82
2:D:161:ASN:HB3	2:D:197:VAL:H	1.44	0.82
1:G:182:GLU:HG3	5:G:325:HOH:O	1.78	0.82
2:F:63:TYR:CD2	2:F:64:VAL:HG23	2.15	0.82
1:A:67:VAL:HG13	2:B:35:TYR:HD2	1.44	0.82
2:F:197:VAL:HG12	5:F:314:HOH:O	1.79	0.82
2:H:136:LEU:H	2:H:136:LEU:HD22	1.44	0.82
2:B:174:LEU:H	2:B:174:LEU:HD23	1.43	0.81
2:D:94:LEU:HD21	2:D:98:ARG:NH2	1.95	0.81
1:A:122:TRP:CE2	1:A:152:LEU:HB2	2.16	0.81
1:A:45:MET:HA	5:A:303:HOH:O	1.78	0.81
2:F:166:THR:O	2:F:169:VAL:HG22	1.79	0.81
2:B:63:TYR:CD2	2:B:64:VAL:HG23	2.16	0.81
1:E:148:LYS:C	1:E:149:LEU:HD22	2.01	0.81
1:E:73:VAL:HG13	2:F:14:GLY:HA3	1.62	0.81
1:C:45:MET:HB2	5:C:310:HOH:O	1.80	0.81
2:F:161:ASN:HB3	2:F:197:VAL:H	1.46	0.80
2:B:143:VAL:HG22	2:B:187:MET:HG3	1.63	0.80
2:F:112:PRO:O	2:F:116:THR:HG22	1.82	0.80
1:A:63:ASN:O	1:A:67:VAL:HG23	1.80	0.80
2:D:136:LEU:HD22	2:D:136:LEU:H	1.46	0.80
1:E:15:GLN:HG2	2:F:34:VAL:HG22	1.64	0.79
1:C:122:TRP:CE2	1:C:152:LEU:HB2	2.17	0.79
1:G:12:SER:HB3	1:G:67:VAL:HG21	1.64	0.79
1:G:125:ASN:HD21	1:G:160:ASP:HB2	1.46	0.79
1:G:136:THR:O	1:G:148:LYS:NZ	2.15	0.79
2:F:54:THR:HG21	5:F:344:HOH:O	1.82	0.79
1:C:63:ASN:O	1:C:67:VAL:HG23	1.81	0.79
2:F:113:GLU:HA	2:F:113:GLU:OE1	1.83	0.79
2:F:45:ASN:CG	3:F:309:NAG:H61	2.03	0.79

Continued on next page...

Continued from previous page...

Atom-1	Atom-2	Interatomic distance (Å)	Clash overlap (Å)
1:G:162:TYR:HB3	5:G:329:HOH:O	1.83	0.78
1:G:180:GLU:OE2	1:G:182:GLU:HB2	1.83	0.78
2:F:136:LEU:HD13	2:F:140:ASN:ND2	1.98	0.78
1:C:180:GLU:HG2	1:C:182:GLU:H	1.48	0.78
2:B:100:GLU:HG2	2:B:104:VAL:CG2	2.12	0.78
2:D:63:TYR:C	2:D:76:VAL:HG13	2.04	0.78
1:G:14:TYR:CE2	1:G:68:LYS:HG3	2.19	0.78
2:B:40:GLU:OE1	2:B:42:TYR:OH	2.00	0.78
2:D:4:GLN:CG	2:D:104:VAL:HG22	2.14	0.78
1:G:148:LYS:HG2	1:G:149:LEU:N	1.99	0.77
1:C:96:SER:HB2	1:C:97:PRO:HD2	1.66	0.77
1:C:73:VAL:HG13	2:D:14:GLY:HA3	1.67	0.77
2:B:136:LEU:HD11	2:B:191:THR:HG23	1.66	0.77
2:F:155:LYS:HD2	2:F:157:ARG:HH21	1.49	0.77
1:C:168:HIS:H	1:C:171:LEU:HD11	1.50	0.77
2:H:160:ARG:O	5:H:328:HOH:O	2.03	0.77
1:G:45:MET:CE	2:H:179:ASP:HA	2.15	0.77
2:B:123:GLN:HG2	2:B:206:SER:HB2	1.66	0.77
1:C:67:VAL:HG13	2:D:35:TYR:HD2	1.48	0.77
3:C:304:NAG:N2	2:D:18:SER:OG	2.17	0.77
2:H:204:HIS:HB3	2:H:205:PRO:HD3	1.67	0.77
2:B:155:LYS:HD2	2:B:157:ARG:HH21	1.50	0.77
2:F:140:ASN:HB2	2:F:190:MET:HE3	1.66	0.77
2:H:113:GLU:OE1	2:H:113:GLU:HA	1.83	0.76
1:G:129:VAL:HG23	5:G:326:HOH:O	1.83	0.76
1:E:109:PHE:HD1	1:E:149:LEU:HD11	1.49	0.76
1:A:56:ASP:OD2	1:A:58:GLN:HG3	1.85	0.76
5:C:324:HOH:O	2:D:176:ARG:HD2	1.86	0.76
1:C:142:ARG:HH12	2:F:136:LEU:HB3	1.50	0.76
2:F:111:GLY:O	2:F:115:HIS:HD2	1.69	0.76
1:A:15:GLN:HG2	2:B:34:VAL:HG22	1.67	0.76
2:H:41:CYS:HB3	2:H:52:TYR:CD1	2.21	0.76
1:E:67:VAL:HG13	2:F:35:TYR:CD2	2.20	0.75
1:A:96:SER:HB2	1:A:97:PRO:HD2	1.69	0.75
1:C:12:SER:HB3	1:C:67:VAL:HG21	1.67	0.75
1:A:28:ASP:HB2	5:A:333:HOH:O	1.85	0.75
2:H:73:HIS:CD2	2:H:94:LEU:HD12	2.22	0.75
1:C:32:LEU:HD23	2:D:180:TRP:CH2	2.21	0.75
3:A:301:NAG:N2	2:B:18:SER:OG	2.20	0.75
2:F:123:GLN:CG	2:F:206:SER:HB2	2.15	0.75
1:A:8:THR:HG22	1:A:11:ILE:HD11	1.69	0.74

Continued on next page...

Continued from previous page...

Atom-1	Atom-2	Interatomic distance (Å)	Clash overlap (Å)
1:E:108:CYS:HB2	1:E:122:TRP:CH2	2.22	0.74
1:E:129:VAL:HG12	5:E:326:HOH:O	1.88	0.74
1:A:15:GLN:HE22	1:A:117:VAL:HG23	1.51	0.74
1:G:36:ASP:HA	5:G:324:HOH:O	1.88	0.74
2:D:44:THR:HG22	2:D:49:ARG:O	1.87	0.74
2:H:94:LEU:HD21	2:H:98:ARG:HH21	1.51	0.74
2:D:65:ARG:HG2	2:D:66:TYR:N	2.01	0.74
2:F:132:ARG:HG2	5:F:336:HOH:O	1.87	0.74
2:H:116:THR:HG23	2:H:117:SER:N	2.02	0.73
5:G:314:HOH:O	2:H:179:ASP:HB3	1.86	0.73
1:C:14:TYR:OH	1:C:19:ASP:HA	1.88	0.73
2:H:116:THR:CG2	2:H:117:SER:H	2.02	0.73
1:G:45:MET:HE2	2:H:179:ASP:HA	1.71	0.73
1:C:88:PRO:HB3	5:C:326:HOH:O	1.89	0.73
2:F:4:GLN:HG2	2:F:104:VAL:HG22	1.70	0.73
2:D:174:LEU:H	2:D:174:LEU:HD23	1.53	0.73
2:B:4:GLN:CG	2:B:104:VAL:HG22	2.18	0.73
2:D:136:LEU:HB3	1:E:142:ARG:HH12	1.53	0.73
1:A:108:CYS:HB2	1:A:122:TRP:CH2	2.24	0.73
2:H:153:LYS:HZ2	2:H:204:HIS:HD2	1.35	0.73
1:G:56:ASP:OD1	1:G:58:GLN:HG3	1.88	0.73
2:B:65:ARG:HG2	2:B:66:TYR:N	2.03	0.72
2:D:204:HIS:HB3	2:D:205:PRO:HD3	1.71	0.72
1:E:136:THR:O	1:E:148:LYS:NZ	2.22	0.72
1:C:172:GLU:OE1	1:C:172:GLU:N	2.17	0.72
2:B:41:CYS:HB3	2:B:52:TYR:CD1	2.19	0.72
2:B:123:GLN:CG	2:B:206:SER:HB2	2.20	0.72
2:H:166:THR:O	2:H:169:VAL:HG22	1.89	0.72
2:B:20:VAL:HG13	2:B:21:PRO:HD2	1.70	0.72
2:B:94:LEU:HD21	2:B:98:ARG:NH2	2.02	0.72
1:C:113:ILE:HA	5:C:326:HOH:O	1.89	0.72
1:C:121:THR:OG1	1:C:165:LYS:HB3	1.90	0.72
2:D:4:GLN:HG3	2:D:104:VAL:HG22	1.70	0.72
2:D:63:TYR:HB2	2:D:79:LEU:HD12	1.71	0.71
2:F:136:LEU:H	2:F:136:LEU:HD22	1.53	0.71
1:A:56:ASP:CG	1:A:58:GLN:HG3	2.11	0.71
2:F:4:GLN:CG	2:F:104:VAL:HG22	2.20	0.71
2:F:164:GLU:O	5:F:345:HOH:O	2.08	0.71
2:D:165:GLU:CD	2:D:167:VAL:HG22	2.11	0.71
2:F:20:VAL:HG13	2:F:21:PRO:HD2	1.73	0.71
2:D:44:THR:HG23	2:D:49:ARG:HB3	1.73	0.71

Continued on next page...

Continued from previous page...

Atom-1	Atom-2	Interatomic distance (Å)	Clash overlap (Å)
2:F:83:ASP:OD2	2:F:83:ASP:N	2.22	0.71
2:B:160:ARG:O	2:B:162:GLY:N	2.24	0.70
1:G:152:LEU:HD22	1:G:154:PHE:HB3	1.72	0.70
1:G:124:ARG:HG2	1:G:125:ASN:HD22	1.56	0.70
2:B:150:TYR:HD2	5:B:333:HOH:O	1.74	0.70
2:H:187:MET:O	5:H:339:HOH:O	2.08	0.70
2:F:73:HIS:CD2	2:F:94:LEU:HD12	2.26	0.70
1:C:36:ASP:OD1	1:C:39:LYS:N	2.24	0.70
2:F:116:THR:HG23	2:F:117:SER:N	2.06	0.70
1:C:122:TRP:NE1	1:C:152:LEU:HB2	2.07	0.70
2:H:106:ARG:HG2	2:H:110:GLU:OE1	1.90	0.70
1:G:168:HIS:H	1:G:171:LEU:CD1	2.00	0.70
2:H:160:ARG:O	2:H:162:GLY:N	2.24	0.70
2:F:214:GLU:HB3	5:F:314:HOH:O	1.92	0.70
2:H:61:GLU:OE2	2:H:77:THR:HG21	1.91	0.70
2:H:153:LYS:NZ	2:H:204:HIS:CD2	2.59	0.70
1:G:67:VAL:HG13	2:H:35:TYR:HD2	1.57	0.70
1:A:123:LEU:HD11	1:A:165:LYS:HD2	1.73	0.69
2:B:48:GLN:HB3	5:B:310:HOH:O	1.92	0.69
2:H:120:ARG:NH1	2:H:180:TRP:HB3	2.06	0.69
1:A:30:ASP:HB3	2:B:180:TRP:CE2	2.27	0.69
1:C:12:SER:CB	1:C:67:VAL:HG21	2.22	0.69
2:B:63:TYR:C	2:B:76:VAL:HG13	2.13	0.69
2:H:136:LEU:HA	2:H:140:ASN:HD21	1.58	0.69
1:G:45:MET:HE1	2:H:178:GLY:O	1.93	0.69
2:D:160:ARG:O	2:D:162:GLY:N	2.25	0.69
2:B:207:LEU:HD22	2:B:207:LEU:H	1.57	0.69
2:F:41:CYS:HB3	2:F:52:TYR:CD1	2.24	0.69
1:A:167:GLU:HB2	3:A:302:NAG:O7	1.92	0.69
2:H:136:LEU:HD13	2:H:140:ASN:ND2	2.08	0.69
1:G:122:TRP:CE2	1:G:152:LEU:HB2	2.27	0.69
3:G:310:NAG:C1	2:H:18:SER:HB2	2.22	0.69
2:B:4:GLN:HG3	2:B:104:VAL:HG22	1.73	0.69
1:C:72:GLY:O	1:C:75:THR:HB	1.93	0.69
2:F:160:ARG:O	2:F:162:GLY:N	2.25	0.69
1:A:8:THR:CG2	1:A:11:ILE:HD11	2.23	0.69
2:H:153:LYS:HZ2	2:H:204:HIS:CD2	2.11	0.69
2:H:207:LEU:HD22	2:H:207:LEU:H	1.57	0.68
1:A:121:THR:OG1	1:A:165:LYS:HB3	1.94	0.68
2:B:136:LEU:HD22	2:B:136:LEU:H	1.58	0.68
1:G:33:PHE:CD1	1:G:42:THR:HG23	2.29	0.68

Continued on next page...

Continued from previous page...

Atom-1	Atom-2	Interatomic distance (Å)	Clash overlap (Å)
2:D:136:LEU:HD13	2:D:140:ASN:ND2	2.09	0.68
2:B:120:ARG:NH1	2:B:180:TRP:HB3	2.09	0.68
2:D:63:TYR:HB2	2:D:79:LEU:CD1	2.24	0.68
2:H:63:TYR:C	2:H:76:VAL:HG13	2.14	0.68
1:A:109:PHE:HA	1:A:149:LEU:HD13	1.74	0.68
1:A:72:GLY:O	1:A:75:THR:HB	1.93	0.68
1:G:56:ASP:CG	1:G:58:GLN:HG3	2.15	0.68
2:D:163:GLN:NE2	2:D:163:GLN:H	1.91	0.68
2:B:61:GLU:OE2	2:B:77:THR:HG21	1.95	0.67
2:H:160:ARG:NH2	2:H:196:GLU:OE2	2.27	0.67
1:G:110:VAL:HB	1:G:113:ILE:HD11	1.76	0.67
1:C:77:ARG:HH12	2:D:83:ASP:CG	1.97	0.67
2:D:9:ASN:HA	5:D:332:HOH:O	1.93	0.67
1:C:22:GLN:HE22	1:C:138:PHE:HB2	1.59	0.67
2:H:91:PRO:O	2:H:95:GLU:HB2	1.95	0.67
2:H:44:THR:HG23	2:H:49:ARG:HB3	1.76	0.67
1:G:99:LEU:HD22	5:G:322:HOH:O	1.93	0.67
1:G:165:LYS:HG2	5:G:331:HOH:O	1.95	0.67
1:A:117:VAL:HG11	1:A:169:TRP:CH2	2.30	0.67
2:H:20:VAL:HG13	2:H:21:PRO:HD2	1.77	0.67
1:G:100:LEU:HD22	1:G:157:SER:HA	1.76	0.67
2:H:4:GLN:HG2	2:H:104:VAL:HG22	1.77	0.67
2:H:132:ARG:HG3	2:H:139:HIS:HB3	1.75	0.67
2:F:63:TYR:HB2	2:F:79:LEU:CD1	2.25	0.67
1:G:38:ASP:O	1:G:40:LYS:HG3	1.94	0.67
1:C:124:ARG:HG2	1:C:125:ASN:HD22	1.60	0.67
1:G:167:GLU:OE1	4:G:311:NDG:H2	1.95	0.67
1:G:78:SER:HB3	5:H:333:HOH:O	1.94	0.67
1:A:168:HIS:H	1:A:171:LEU:CD1	2.08	0.67
2:H:88:ASN:OD1	2:H:94:LEU:CD1	2.43	0.67
2:F:163:GLN:H	2:F:163:GLN:NE2	1.92	0.67
2:D:45:ASN:HA	3:D:306:NAG:O5	1.94	0.67
2:D:20:VAL:HG13	2:D:21:PRO:HD2	1.74	0.67
1:C:172:GLU:H	1:C:172:GLU:CD	1.96	0.66
1:E:180:GLU:OE2	1:E:182:GLU:HB2	1.95	0.66
2:B:204:HIS:O	5:B:313:HOH:O	2.12	0.66
1:G:77:ARG:HH12	2:H:83:ASP:CG	1.99	0.66
2:B:204:HIS:ND1	2:B:205:PRO:N	2.44	0.66
2:B:204:HIS:HB3	2:B:205:PRO:HD3	1.76	0.66
1:E:109:PHE:HA	1:E:149:LEU:HD13	1.75	0.66
2:F:143:VAL:HG22	2:F:187:MET:HG3	1.78	0.66

Continued on next page...

Continued from previous page...

Atom-1	Atom-2	Interatomic distance (Å)	Clash overlap (Å)
2:D:76:VAL:HG22	2:D:77:THR:HG23	1.77	0.66
2:D:204:HIS:C	2:D:204:HIS:ND1	2.48	0.66
1:A:1:ILE:N	1:A:1:ILE:HD13	2.11	0.66
1:G:108:CYS:HB2	1:G:122:TRP:CH2	2.31	0.66
1:C:38:ASP:O	1:C:40:LYS:HG3	1.96	0.66
2:H:63:TYR:CE2	2:H:64:VAL:HG23	2.30	0.66
2:F:116:THR:CG2	2:F:117:SER:H	2.08	0.66
2:F:132:ARG:HG3	2:F:139:HIS:HB3	1.76	0.66
1:E:56:ASP:OD1	1:E:58:GLN:HG3	1.95	0.66
1:A:74:LEU:CD1	2:B:79:LEU:HD13	2.27	0.65
2:H:111:GLY:O	2:H:115:HIS:HD2	1.79	0.65
2:F:63:TYR:C	2:F:76:VAL:HG13	2.16	0.65
1:G:117:VAL:HG11	1:G:169:TRP:CH2	2.32	0.65
2:H:163:GLN:NE2	5:H:328:HOH:O	2.30	0.65
2:D:201:HIS:HB2	5:D:324:HOH:O	1.95	0.65
1:E:74:LEU:HD11	2:F:63:TYR:CD2	2.31	0.65
2:F:175:ILE:HG23	5:F:346:HOH:O	1.95	0.65
2:F:43:PHE:CZ	2:F:105:CYS:SG	2.89	0.65
2:D:166:THR:O	2:D:169:VAL:HG22	1.97	0.65
2:F:44:THR:HG23	2:F:49:ARG:HB3	1.78	0.65
1:A:100:LEU:HD22	1:A:157:SER:HA	1.79	0.65
2:B:136:LEU:HA	2:B:140:ASN:HD21	1.62	0.65
1:G:163:ASP:OD2	1:G:178:HIS:HD2	1.80	0.65
2:F:124:PRO:HD2	2:F:207:LEU:HD21	1.77	0.65
2:B:44:THR:HG22	2:B:49:ARG:O	1.97	0.65
1:C:78:SER:HB2	5:C:328:HOH:O	1.97	0.65
1:G:152:LEU:CD2	1:G:154:PHE:HB3	2.27	0.65
1:C:163:ASP:OD1	1:C:176:LEU:HG	1.96	0.65
2:B:149:PHE:CE2	2:B:182:PHE:HB2	2.32	0.64
1:A:56:ASP:OD2	1:A:58:GLN:CG	2.44	0.64
1:E:114:PHE:CD1	5:E:324:HOH:O	2.49	0.64
2:F:54:THR:OG1	2:F:66:TYR:HB3	1.96	0.64
2:D:132:ARG:HG3	2:D:139:HIS:HB3	1.79	0.64
2:B:111:GLY:O	2:B:115:HIS:HD2	1.81	0.64
2:D:113:GLU:HA	2:D:113:GLU:OE1	1.97	0.64
1:E:168:HIS:N	1:E:171:LEU:HD11	2.08	0.64
2:F:88:ASN:OD1	2:F:94:LEU:CD1	2.46	0.64
1:G:122:TRP:HB2	5:G:313:HOH:O	1.95	0.64
1:G:125:ASN:ND2	1:G:160:ASP:HB2	2.11	0.64
2:B:45:ASN:HA	3:B:303:NAG:C1	2.27	0.64
1:C:117:VAL:HG11	1:C:169:TRP:CH2	2.31	0.64

Continued on next page...

Continued from previous page...

Atom-1	Atom-2	Interatomic distance (Å)	Clash overlap (Å)
2:B:126:VAL:HG11	2:B:211:ILE:HD11	1.78	0.64
2:H:40:GLU:OE1	2:H:55:ARG:NE	2.30	0.64
3:G:310:NAG:C7	2:H:18:SER:OG	2.46	0.64
1:G:14:TYR:CZ	1:G:68:LYS:HD3	2.33	0.64
2:D:156:VAL:HG11	2:D:186:VAL:HG21	1.79	0.64
2:F:109:TYR:CZ	2:F:118:LEU:HD21	2.33	0.64
2:B:156:VAL:HG11	2:B:186:VAL:HG21	1.78	0.64
2:B:63:TYR:HB2	2:B:79:LEU:HD12	1.80	0.64
1:A:179:TRP:CH2	1:A:181:PRO:HD3	2.33	0.64
1:A:152:LEU:HD22	1:A:154:PHE:HB3	1.80	0.64
1:C:135:GLU:OE2	1:C:148:LYS:HD3	1.98	0.64
2:F:108:ASN:HA	2:F:112:PRO:HD2	1.79	0.64
2:B:128:ILE:HG21	5:B:304:HOH:O	1.98	0.64
2:F:94:LEU:HD21	2:F:98:ARG:HH21	1.62	0.64
1:G:117:VAL:HG11	1:G:169:TRP:CZ2	2.33	0.64
2:B:124:PRO:HD2	2:B:207:LEU:HD21	1.79	0.64
2:F:45:ASN:OD1	3:F:309:NAG:H61	1.97	0.64
2:D:207:LEU:HG	2:D:211:ILE:CG2	2.27	0.64
2:F:127:VAL:HG22	5:F:318:HOH:O	1.96	0.63
1:C:70:ASN:HB3	2:D:35:TYR:CZ	2.33	0.63
2:D:156:VAL:HG22	2:D:202:VAL:HG22	1.79	0.63
2:D:111:GLY:O	2:D:115:HIS:HD2	1.80	0.63
2:D:199:THR:HG22	2:D:214:GLU:HA	1.81	0.63
3:A:301:NAG:C8	2:B:18:SER:OG	2.47	0.63
1:A:93:PHE:HE2	1:A:107:ILE:HD12	1.61	0.63
1:G:139:PHE:HB2	1:G:147:HIS:CD2	2.34	0.63
2:D:207:LEU:HG	2:D:211:ILE:HG23	1.80	0.63
1:G:123:LEU:HD11	1:G:165:LYS:HD2	1.81	0.63
2:B:165:GLU:HB3	5:B:334:HOH:O	1.97	0.63
1:A:124:ARG:HG3	1:A:162:TYR:CE1	2.34	0.63
2:D:120:ARG:NH1	2:D:180:TRP:HB3	2.13	0.63
2:D:108:ASN:HA	2:D:112:PRO:HD2	1.79	0.63
2:D:140:ASN:HB2	2:D:190:MET:HE3	1.79	0.63
2:H:132:ARG:HG3	2:H:139:HIS:CB	2.28	0.63
2:D:81:ARG:NH2	5:D:314:HOH:O	2.31	0.63
2:B:152:ALA:HB2	2:B:182:PHE:CE2	2.32	0.63
2:D:100:GLU:HG2	2:D:104:VAL:CG2	2.29	0.63
1:C:141:ASN:OD1	1:C:147:HIS:ND1	2.28	0.63
2:B:88:ASN:HA	2:B:94:LEU:HD13	1.80	0.63
2:F:204:HIS:ND1	2:F:205:PRO:N	2.46	0.63
2:B:54:THR:OG1	2:B:66:TYR:HB3	1.99	0.63

Continued on next page...

Continued from previous page...

Atom-1	Atom-2	Interatomic distance (Å)	Clash overlap (Å)
2:D:100:GLU:HG2	2:D:104:VAL:HG21	1.80	0.63
2:D:126:VAL:HG23	2:D:213:VAL:HG21	1.79	0.63
1:G:12:SER:CB	1:G:67:VAL:HG21	2.27	0.62
2:F:106:ARG:HG2	2:F:110:GLU:OE1	1.99	0.62
1:A:127:LYS:O	1:A:128:SER:C	2.38	0.62
2:B:163:GLN:NE2	2:B:163:GLN:H	1.96	0.62
1:E:85:ASN:ND2	1:E:169:TRP:HB2	2.14	0.62
2:F:63:TYR:HB2	2:F:79:LEU:HD12	1.81	0.62
1:G:167:GLU:HB3	4:G:311:NDG:O7	1.99	0.62
2:B:44:THR:HG23	2:B:49:ARG:HB3	1.81	0.62
3:G:310:NAG:C1	2:H:18:SER:CB	2.78	0.62
1:A:12:SER:CB	1:A:67:VAL:HG21	2.26	0.62
2:F:204:HIS:ND1	2:F:204:HIS:C	2.52	0.62
1:A:111:ASP:OD1	1:A:112:ASN:N	2.33	0.62
1:E:74:LEU:HD11	2:F:63:TYR:CE2	2.34	0.62
1:A:115:PRO:O	1:A:168:HIS:HE1	1.83	0.62
2:D:161:ASN:HB2	5:D:327:HOH:O	2.00	0.62
2:F:132:ARG:HG3	2:F:139:HIS:CB	2.30	0.62
2:D:163:GLN:NE2	2:D:163:GLN:N	2.48	0.62
1:E:100:LEU:HD22	1:E:157:SER:HA	1.81	0.62
1:E:14:TYR:OH	1:E:19:ASP:HA	2.00	0.62
1:E:5:HIS:O	5:E:330:HOH:O	2.16	0.62
2:H:57:ILE:HG13	2:H:62:GLU:HA	1.82	0.62
1:G:67:VAL:HG13	2:H:35:TYR:CD2	2.34	0.62
2:D:44:THR:CB	5:D:316:HOH:O	2.48	0.62
2:H:9:ASN:HB2	2:H:87:TRP:CE2	2.34	0.62
1:E:76:LYS:O	1:E:78:SER:N	2.33	0.62
2:D:44:THR:CG2	2:D:49:ARG:HB3	2.29	0.62
2:D:165:GLU:OE1	2:D:167:VAL:HG22	2.00	0.62
2:H:163:GLN:H	2:H:163:GLN:NE2	1.98	0.61
2:D:171:SER:OG	2:F:169:VAL:HG22	2.00	0.61
2:D:4:GLN:HG2	2:D:104:VAL:HG22	1.81	0.61
2:F:120:ARG:HG2	2:F:120:ARG:HH11	1.65	0.61
2:B:30:GLU:HB2	2:B:32:HIS:NE2	2.15	0.61
2:H:101:LEU:O	2:H:101:LEU:HD23	2.01	0.61
1:C:148:LYS:HG2	1:C:149:LEU:N	2.15	0.61
2:B:43:PHE:CE2	2:B:109:TYR:HB2	2.34	0.61
1:G:26:GLU:OE2	1:G:140:VAL:HG23	2.00	0.61
1:A:76:LYS:C	2:B:16:GLY:HA2	2.21	0.61
1:G:122:TRP:NE1	1:G:152:LEU:HB2	2.16	0.61
1:G:64:ILE:HD13	5:G:330:HOH:O	1.98	0.61

Continued on next page...

Continued from previous page...

Atom-1	Atom-2	Interatomic distance (Å)	Clash overlap (Å)
5:G:323:HOH:O	2:H:40:GLU:HA	1.99	0.61
1:G:9:TYR:HD1	1:G:25:PHE:CD2	2.19	0.61
2:H:65:ARG:HG2	2:H:66:TYR:N	2.15	0.61
2:H:63:TYR:HB2	2:H:79:LEU:CD1	2.31	0.61
2:F:207:LEU:HG	2:F:211:ILE:CG2	2.29	0.61
2:B:30:GLU:HB2	2:B:32:HIS:HE2	1.65	0.61
1:E:115:PRO:HD3	5:E:324:HOH:O	2.00	0.61
2:F:45:ASN:ND2	3:F:309:NAG:H61	2.15	0.61
2:F:120:ARG:HH12	2:F:180:TRP:CB	2.12	0.61
1:E:161:ILE:HG22	1:E:180:GLU:CG	2.24	0.61
1:C:74:LEU:O	1:C:78:SER:HB2	2.01	0.61
2:D:132:ARG:HG3	2:D:139:HIS:CB	2.31	0.61
2:H:160:ARG:HH11	2:H:160:ARG:HG3	1.65	0.61
1:C:152:LEU:HD22	1:C:154:PHE:HB3	1.82	0.61
2:B:114:THR:O	2:B:119:ARG:HG3	2.01	0.61
2:D:119:ARG:NH1	2:D:119:ARG:HB3	2.15	0.60
1:G:127:LYS:O	1:G:128:SER:C	2.40	0.60
1:E:16:SER:HB3	1:E:17:PRO:HD3	1.82	0.60
2:B:108:ASN:HA	2:B:112:PRO:HD2	1.82	0.60
1:E:12:SER:CB	1:E:67:VAL:HG21	2.32	0.60
1:G:85:ASN:ND2	1:G:169:TRP:HB2	2.16	0.60
2:H:126:VAL:HG11	2:H:202:VAL:HG21	1.83	0.60
2:D:120:ARG:NH1	2:D:120:ARG:HG2	2.15	0.60
2:B:163:GLN:NE2	2:B:163:GLN:N	2.49	0.60
1:E:110:VAL:HB	1:E:113:ILE:HD11	1.84	0.60
1:A:77:ARG:HH12	2:B:83:ASP:CG	2.05	0.60
2:B:207:LEU:N	2:B:207:LEU:HD22	2.16	0.60
2:B:120:ARG:HH11	2:B:120:ARG:HG2	1.66	0.60
2:B:169:VAL:HB	5:B:328:HOH:O	2.00	0.60
1:E:143:ASP:CG	2:F:60:ARG:HH21	2.04	0.60
2:H:140:ASN:HB2	2:H:190:MET:HE3	1.82	0.60
1:G:33:PHE:HB2	1:G:43:VAL:O	2.00	0.60
1:E:16:SER:HB3	1:E:17:PRO:CD	2.32	0.60
2:F:153:LYS:HG2	5:F:332:HOH:O	2.01	0.60
1:A:22:GLN:HE22	1:A:138:PHE:HB2	1.65	0.60
1:C:142:ARG:HH12	2:F:136:LEU:CB	2.12	0.60
5:E:322:HOH:O	2:F:179:ASP:HB3	2.01	0.60
2:H:204:HIS:C	2:H:204:HIS:ND1	2.54	0.60
1:G:58:GLN:O	1:G:62:GLN:HB2	2.02	0.60
2:D:91:PRO:O	2:D:95:GLU:HB2	2.01	0.60
1:C:67:VAL:HG13	2:D:35:TYR:CD2	2.34	0.60

Continued on next page...

Continued from previous page...

Atom-1	Atom-2	Interatomic distance (Å)	Clash overlap (Å)
1:G:36:ASP:OD1	1:G:39:LYS:N	2.34	0.60
2:B:132:ARG:HG3	2:B:139:HIS:HB3	1.84	0.60
5:A:315:HOH:O	2:B:183:GLN:HB3	2.02	0.60
2:D:44:THR:HB	5:D:316:HOH:O	2.01	0.60
1:E:56:ASP:CG	1:E:58:GLN:HG3	2.22	0.60
2:D:81:ARG:HB2	2:D:82:PRO:HD3	1.82	0.60
2:F:57:ILE:HG13	2:F:62:GLU:HA	1.84	0.59
1:E:12:SER:HB3	1:E:67:VAL:HG21	1.84	0.59
2:H:207:LEU:HD22	2:H:207:LEU:N	2.16	0.59
1:G:100:LEU:HA	1:G:156:PRO:HG2	1.82	0.59
5:A:312:HOH:O	2:B:176:ARG:HG3	2.00	0.59
2:H:160:ARG:NH1	2:H:160:ARG:HG3	2.16	0.59
2:D:112:PRO:O	2:D:116:THR:HG22	2.03	0.59
2:H:199:THR:HG22	2:H:214:GLU:HA	1.83	0.59
1:C:127:LYS:O	1:C:128:SER:C	2.39	0.59
1:C:76:LYS:O	1:C:78:SER:N	2.36	0.59
2:H:121:LEU:HG	2:H:205:PRO:O	2.03	0.59
1:C:26:GLU:OE2	1:C:140:VAL:HG23	2.02	0.59
2:H:108:ASN:HA	2:H:112:PRO:HD2	1.83	0.59
1:G:111:ASP:OD1	1:G:147:HIS:HB3	2.02	0.59
2:H:44:THR:HG22	2:H:49:ARG:O	2.02	0.59
1:E:33:PHE:CD1	1:E:42:THR:HG23	2.37	0.59
1:C:4:ASP:OD2	3:D:306:NAG:H62	2.03	0.59
2:B:119:ARG:NH1	2:B:119:ARG:HB3	2.18	0.59
2:B:166:THR:O	2:B:169:VAL:HG13	2.02	0.59
2:D:51:ARG:NH2	2:D:67:ASP:OD2	2.32	0.59
1:E:125:ASN:HB2	1:E:127:LYS:NZ	2.17	0.59
2:F:101:LEU:O	2:F:101:LEU:HD23	2.03	0.59
1:C:9:TYR:HD1	1:C:25:PHE:CD2	2.21	0.59
2:H:116:THR:CG2	2:H:117:SER:N	2.65	0.59
1:G:64:ILE:CD1	5:G:330:HOH:O	2.51	0.59
2:B:165:GLU:N	5:B:334:HOH:O	2.25	0.59
2:B:98:ARG:HH11	2:B:98:ARG:HG2	1.68	0.59
1:G:72:GLY:O	1:G:75:THR:HB	2.03	0.59
3:G:310:NAG:O7	2:H:18:SER:OG	2.20	0.58
2:B:149:PHE:HE1	2:B:183:GLN:HA	1.67	0.58
1:A:31:GLU:OE1	1:A:137:SER:HB2	2.03	0.58
1:A:76:LYS:O	1:A:78:SER:N	2.36	0.58
1:E:152:LEU:HD22	1:E:154:PHE:HB3	1.84	0.58
2:D:116:THR:CG2	2:D:117:SER:N	2.53	0.58
1:E:163:ASP:OD1	1:E:176:LEU:HG	2.04	0.58

Continued on next page...

Continued from previous page...

Atom-1	Atom-2	Interatomic distance (Å)	Clash overlap (Å)
1:G:121:THR:OG1	1:G:165:LYS:HB3	2.04	0.58
2:D:163:GLN:HE21	2:D:163:GLN:H	1.51	0.58
1:E:117:VAL:HG12	5:E:313:HOH:O	2.03	0.58
2:F:65:ARG:HG2	2:F:66:TYR:N	2.19	0.58
1:E:95:LYS:HE3	2:F:148:ASP:OD1	2.03	0.58
1:A:59:GLY:O	2:B:5:LYS:NZ	2.28	0.58
2:F:52:TYR:CE2	2:F:54:THR:HG23	2.39	0.58
2:B:204:HIS:C	2:B:204:HIS:ND1	2.57	0.58
2:B:199:THR:HG22	2:B:214:GLU:HG2	1.85	0.58
1:A:148:LYS:C	1:A:149:LEU:HD22	2.24	0.58
2:F:175:ILE:O	2:F:175:ILE:HG22	2.04	0.58
2:F:119:ARG:HD2	5:F:321:HOH:O	2.02	0.58
1:E:168:HIS:H	1:E:171:LEU:CD1	2.09	0.58
1:G:139:PHE:HB2	1:G:147:HIS:NE2	2.18	0.58
2:F:163:GLN:N	2:F:163:GLN:NE2	2.51	0.58
2:H:137:ASN:O	2:H:138:HIS:HB2	2.04	0.58
2:H:87:TRP:O	2:H:94:LEU:HB2	2.04	0.58
1:E:45:MET:CE	5:E:322:HOH:O	2.51	0.58
2:B:149:PHE:CE1	2:B:183:GLN:HA	2.38	0.58
1:C:123:LEU:HD11	1:C:165:LYS:HD2	1.85	0.58
1:C:136:THR:CG2	1:C:149:LEU:HB2	2.34	0.58
2:D:199:THR:CG2	2:D:214:GLU:HG2	2.34	0.58
1:E:98:VAL:HG23	5:E:312:HOH:O	2.03	0.58
2:H:125:ASN:HD21	2:H:148:ASP:HB2	1.68	0.57
2:H:66:TYR:OH	2:H:98:ARG:HD3	2.04	0.57
2:D:63:TYR:CE2	2:D:64:VAL:HG23	2.38	0.57
1:C:9:TYR:CD1	1:C:25:PHE:CD2	2.92	0.57
1:C:156:PRO:HA	5:C:307:HOH:O	2.04	0.57
1:C:55:PHE:O	1:C:57:PRO:HD3	2.04	0.57
2:H:96:ARG:HD3	5:H:338:HOH:O	2.04	0.57
2:D:94:LEU:O	2:D:94:LEU:HG	2.04	0.57
2:H:126:VAL:HG21	2:H:211:ILE:CD1	2.34	0.57
2:D:203:GLU:O	2:D:204:HIS:HB3	2.04	0.57
1:E:127:LYS:O	1:E:128:SER:C	2.41	0.57
1:E:63:ASN:O	1:E:67:VAL:HG23	2.04	0.57
2:F:155:LYS:HD2	2:F:157:ARG:NH2	2.18	0.57
1:E:92:VAL:HG23	1:E:177:LYS:CG	2.34	0.57
1:E:167:GLU:HG2	1:E:174:PRO:HG3	1.84	0.57
2:H:54:THR:OG1	2:H:66:TYR:HB3	2.04	0.57
1:G:77:ARG:NH2	2:H:83:ASP:OD2	2.35	0.57
2:F:91:PRO:O	2:F:95:GLU:HB2	2.04	0.57

Continued on next page...

Continued from previous page...

Atom-1	Atom-2	Interatomic distance (Å)	Clash overlap (Å)
1:E:46:LEU:O	1:E:49:PHE:HB2	2.04	0.57
1:C:167:GLU:HG2	1:C:174:PRO:HG3	1.87	0.57
1:E:10:GLY:HA2	1:E:23:TYR:CZ	2.40	0.57
1:E:45:MET:HE1	5:E:322:HOH:O	2.05	0.57
2:F:120:ARG:O	2:F:121:LEU:HD12	2.05	0.57
2:H:120:ARG:O	2:H:151:PRO:HD3	2.03	0.57
2:H:204:HIS:ND1	2:H:205:PRO:N	2.53	0.57
2:D:199:THR:HG22	2:D:214:GLU:HG2	1.85	0.57
2:D:114:THR:O	2:D:119:ARG:HG3	2.03	0.57
2:B:96:ARG:NH2	5:B:322:HOH:O	2.37	0.57
2:F:137:ASN:O	2:F:138:HIS:HB2	2.03	0.57
1:E:161:ILE:HD12	1:E:178:HIS:NE2	2.19	0.57
2:B:63:TYR:HB2	2:B:79:LEU:CD1	2.35	0.57
2:F:166:THR:O	2:F:169:VAL:CG2	2.52	0.57
2:D:85:GLU:HA	2:D:85:GLU:OE2	2.04	0.57
1:A:125:ASN:HA	5:A:326:HOH:O	2.04	0.57
2:F:196:GLU:HB2	5:F:331:HOH:O	2.04	0.57
1:G:23:TYR:HD2	5:G:330:HOH:O	1.86	0.57
2:D:12:VAL:O	2:D:14:GLY:N	2.38	0.57
2:F:139:HIS:HA	5:F:336:HOH:O	2.04	0.57
2:D:155:LYS:HA	5:F:342:HOH:O	2.05	0.57
1:E:163:ASP:OD2	1:E:178:HIS:HD2	1.88	0.57
2:F:62:GLU:OE2	5:F:319:HOH:O	2.17	0.57
2:F:204:HIS:HB3	2:F:205:PRO:HD3	1.85	0.57
2:B:132:ARG:HG3	2:B:139:HIS:CB	2.35	0.57
1:E:73:VAL:CG1	2:F:14:GLY:HA3	2.33	0.57
1:A:148:LYS:HG2	1:A:149:LEU:N	2.20	0.57
1:G:22:GLN:HE22	1:G:138:PHE:HB2	1.69	0.57
2:D:194:ARG:HG3	2:D:194:ARG:HH11	1.70	0.57
1:G:115:PRO:O	1:G:168:HIS:HE1	1.86	0.57
2:B:104:VAL:HG12	2:B:104:VAL:O	2.05	0.57
1:A:82:PRO:HA	2:B:33:PHE:CE1	2.38	0.57
2:H:45:ASN:ND2	3:H:312:NAG:H82	2.20	0.57
2:B:172:THR:CG2	2:B:185:LEU:HB2	2.35	0.56
2:H:120:ARG:O	2:H:121:LEU:HD12	2.05	0.56
2:F:104:VAL:HG12	2:F:104:VAL:O	2.04	0.56
1:C:32:LEU:HD23	2:D:180:TRP:CZ2	2.39	0.56
2:F:193:ARG:HB2	2:F:196:GLU:HG3	1.86	0.56
2:H:143:VAL:HG22	2:H:187:MET:HG3	1.87	0.56
1:A:85:ASN:ND2	2:B:29:SER:HA	2.20	0.56
2:H:160:ARG:CG	5:H:331:HOH:O	2.53	0.56

Continued on next page...

Continued from previous page...

Atom-1	Atom-2	Interatomic distance (Å)	Clash overlap (Å)
2:H:157:ARG:NH1	5:H:326:HOH:O	2.27	0.56
2:H:153:LYS:HZ3	2:H:204:HIS:HD2	1.52	0.56
2:F:136:LEU:HD13	2:F:140:ASN:HD21	1.69	0.56
1:A:180:GLU:HG2	1:A:182:GLU:H	1.70	0.56
1:G:30:ASP:HB3	2:H:180:TRP:CE2	2.40	0.56
1:G:76:LYS:O	1:G:78:SER:N	2.38	0.56
1:G:82:PRO:HA	2:H:33:PHE:CE1	2.41	0.56
2:B:4:GLN:HG2	2:B:104:VAL:HG22	1.86	0.56
1:E:109:PHE:CD1	1:E:149:LEU:HD11	2.36	0.56
1:G:139:PHE:CB	1:G:147:HIS:NE2	2.68	0.56
1:C:111:ASP:OD1	1:C:147:HIS:HB3	2.04	0.56
1:E:38:ASP:O	1:E:40:LYS:HG3	2.05	0.56
2:B:12:VAL:O	2:B:14:GLY:N	2.38	0.56
2:D:104:VAL:HG12	2:D:104:VAL:O	2.05	0.56
1:A:90:ALA:O	1:A:177:LYS:HE3	2.04	0.56
1:C:16:SER:HB3	1:C:17:PRO:HD3	1.88	0.56
2:D:136:LEU:HA	2:D:140:ASN:HD21	1.69	0.56
2:B:126:VAL:HG23	2:B:213:VAL:HG21	1.87	0.56
2:B:91:PRO:O	2:B:95:GLU:HB2	2.06	0.56
1:A:9:TYR:HD1	1:A:25:PHE:CD2	2.24	0.56
2:H:12:VAL:O	2:H:14:GLY:N	2.38	0.56
1:A:136:THR:O	1:A:148:LYS:NZ	2.33	0.56
2:H:44:THR:CG2	2:H:49:ARG:HB3	2.36	0.56
1:A:1:ILE:H1	1:A:1:ILE:HD13	1.69	0.56
1:G:16:SER:HB3	2:H:33:PHE:HB2	1.88	0.56
2:H:157:ARG:NH2	5:H:313:HOH:O	2.39	0.55
2:B:44:THR:CG2	2:B:49:ARG:HB3	2.36	0.55
2:D:124:PRO:HD2	2:D:207:LEU:HD21	1.88	0.55
3:E:307:NAG:C1	3:E:307:NAG:H82	2.36	0.55
2:B:142:LEU:HD13	2:B:190:MET:CE	2.35	0.55
1:G:15:GLN:OE1	1:G:116:PRO:HG2	2.06	0.55
2:B:207:LEU:HA	5:B:314:HOH:O	2.04	0.55
1:C:16:SER:HB3	1:C:17:PRO:CD	2.36	0.55
2:B:41:CYS:CB	2:B:52:TYR:HD1	2.12	0.55
1:C:76:LYS:C	2:D:16:GLY:HA2	2.27	0.55
2:H:121:LEU:HB3	2:H:206:SER:HB3	1.89	0.55
2:F:12:VAL:O	2:F:14:GLY:N	2.40	0.55
2:H:42:TYR:CD1	2:H:42:TYR:N	2.74	0.55
1:A:67:VAL:HG13	2:B:35:TYR:CD2	2.32	0.55
2:H:203:GLU:O	2:H:204:HIS:CB	2.53	0.55
1:G:148:LYS:HG2	1:G:149:LEU:H	1.70	0.55

Continued on next page...

Continued from previous page...

Atom-1	Atom-2	Interatomic distance (Å)	Clash overlap (Å)
2:B:165:GLU:CD	2:B:167:VAL:HG22	2.27	0.55
2:B:119:ARG:CZ	2:B:119:ARG:HB3	2.37	0.55
2:H:199:THR:HG22	2:H:214:GLU:HG2	1.88	0.55
3:A:301:NAG:H82	5:B:335:HOH:O	2.05	0.55
2:D:120:ARG:HH12	2:D:180:TRP:HB3	1.71	0.55
1:G:46:LEU:O	1:G:49:PHE:HB2	2.07	0.55
2:D:42:TYR:N	2:D:42:TYR:CD1	2.75	0.55
2:B:113:GLU:HA	2:B:116:THR:HG22	1.89	0.55
1:C:15:GLN:HE22	1:C:117:VAL:HG23	1.72	0.55
1:G:76:LYS:C	2:H:16:GLY:HA2	2.27	0.55
2:H:199:THR:CG2	2:H:214:GLU:HG2	2.37	0.55
1:G:103:PRO:HD2	5:G:317:HOH:O	2.06	0.55
2:F:63:TYR:CE2	2:F:64:VAL:HG23	2.42	0.55
1:C:148:LYS:C	1:C:149:LEU:HD22	2.26	0.55
1:A:17:PRO:HG3	2:B:32:HIS:HA	1.88	0.55
1:A:163:ASP:OD2	1:A:178:HIS:HD2	1.90	0.55
1:E:149:LEU:HD22	1:E:149:LEU:N	2.21	0.54
2:D:175:ILE:HB	2:D:183:GLN:O	2.07	0.54
2:F:114:THR:O	2:F:119:ARG:HG3	2.06	0.54
1:E:92:VAL:HG23	1:E:177:LYS:HG3	1.89	0.54
3:C:305:NAG:H82	5:C:332:HOH:O	2.05	0.54
2:H:83:ASP:OD2	2:H:83:ASP:N	2.40	0.54
1:C:90:ALA:O	1:C:177:LYS:HE3	2.07	0.54
2:F:81:ARG:HB2	2:F:82:PRO:HD3	1.88	0.54
2:F:87:TRP:O	2:F:94:LEU:HB2	2.07	0.54
2:B:63:TYR:C	2:B:76:VAL:CG1	2.75	0.54
2:D:76:VAL:HG22	2:D:77:THR:CG2	2.37	0.54
2:B:121:LEU:HG	2:B:205:PRO:O	2.07	0.54
2:H:38:MET:HE2	2:H:40:GLU:OE2	2.07	0.54
2:F:94:LEU:HD21	2:F:98:ARG:NH2	2.22	0.54
1:C:117:VAL:HG11	1:C:169:TRP:CZ2	2.41	0.54
2:H:112:PRO:O	2:H:116:THR:HG22	2.07	0.54
1:E:73:VAL:HG11	1:E:77:ARG:HH21	1.71	0.54
2:B:166:THR:O	2:B:169:VAL:HG22	2.07	0.54
2:D:140:ASN:HB2	2:D:190:MET:O	2.08	0.54
2:B:160:ARG:HB2	5:B:325:HOH:O	2.06	0.54
1:G:161:ILE:HD12	1:G:178:HIS:NE2	2.23	0.54
2:F:82:PRO:HB2	2:F:83:ASP:OD2	2.07	0.54
2:F:85:GLU:HA	2:F:85:GLU:OE2	2.08	0.54
1:A:74:LEU:HD11	2:B:79:LEU:HD13	1.88	0.54
2:D:88:ASN:OD1	2:D:94:LEU:HD13	2.07	0.54

Continued on next page...

Continued from previous page...

Atom-1	Atom-2	Interatomic distance (Å)	Clash overlap (Å)
2:H:4:GLN:CG	2:H:104:VAL:HG22	2.38	0.54
1:E:58:GLN:NE2	1:E:59:GLY:N	2.56	0.54
1:E:58:GLN:O	1:E:62:GLN:HB2	2.08	0.54
2:D:146:VAL:HG21	2:D:156:VAL:HG21	1.90	0.54
2:B:193:ARG:HB2	2:B:196:GLU:HG3	1.89	0.54
1:A:77:ARG:NH1	2:B:83:ASP:OD2	2.41	0.54
1:C:169:TRP:NE1	3:C:305:NAG:H81	2.22	0.54
1:G:7:GLY:O	5:G:323:HOH:O	2.17	0.54
1:C:161:ILE:HD12	1:C:178:HIS:NE2	2.23	0.54
1:E:161:ILE:CG2	1:E:180:GLU:OE1	2.50	0.54
1:G:59:GLY:O	2:H:5:LYS:NZ	2.32	0.54
2:F:43:PHE:CE2	2:F:105:CYS:SG	3.01	0.54
2:B:110:GLU:HB3	5:B:316:HOH:O	2.07	0.54
2:F:207:LEU:HG	2:F:211:ILE:HG23	1.90	0.53
1:C:46:LEU:O	1:C:49:PHE:HB2	2.08	0.53
1:E:148:LYS:HG2	1:E:149:LEU:N	2.23	0.53
2:F:126:VAL:HG21	2:F:211:ILE:HD11	1.90	0.53
1:E:100:LEU:HA	1:E:156:PRO:HG2	1.90	0.53
2:B:116:THR:CG2	2:B:117:SER:N	2.53	0.53
2:B:94:LEU:HG	2:B:94:LEU:O	2.08	0.53
2:H:120:ARG:NH1	2:H:180:TRP:CB	2.70	0.53
2:F:196:GLU:HA	5:F:340:HOH:O	2.09	0.53
1:A:16:SER:HB3	2:B:33:PHE:HB2	1.89	0.53
2:F:29:SER:O	2:F:30:GLU:HG3	2.08	0.53
2:F:214:GLU:CB	5:F:314:HOH:O	2.52	0.53
2:B:42:TYR:N	2:B:42:TYR:CD1	2.76	0.53
2:F:4:GLN:HG3	2:F:104:VAL:HG22	1.90	0.53
2:B:119:ARG:NH1	2:B:119:ARG:CB	2.71	0.53
2:D:51:ARG:HH21	2:D:67:ASP:CG	2.12	0.53
2:H:146:VAL:HG11	2:H:154:ILE:HD11	1.90	0.53
2:D:193:ARG:HB2	2:D:196:GLU:HG3	1.91	0.53
1:C:89:GLN:O	1:C:110:VAL:HG13	2.09	0.53
2:F:172:THR:CG2	2:F:185:LEU:HB2	2.39	0.53
2:B:132:ARG:HB2	2:B:141:THR:OG1	2.08	0.53
2:H:163:GLN:N	2:H:163:GLN:NE2	2.56	0.53
3:G:310:NAG:C1	2:H:18:SER:OG	2.57	0.53
2:F:108:ASN:O	2:F:112:PRO:HD2	2.07	0.53
2:H:175:ILE:HB	2:H:183:GLN:O	2.09	0.53
2:H:207:LEU:HG	2:H:211:ILE:HG23	1.91	0.53
2:B:81:ARG:HB2	2:B:82:PRO:HD3	1.91	0.53
1:C:125:ASN:HD21	1:C:160:ASP:CB	2.04	0.53

Continued on next page...

Continued from previous page...

Atom-1	Atom-2	Interatomic distance (Å)	Clash overlap (Å)
2:D:3:ALA:HA	2:D:108:ASN:OD1	2.09	0.53
2:H:152:ALA:HB3	5:H:324:HOH:O	2.09	0.53
1:A:168:HIS:N	1:A:171:LEU:HD11	2.18	0.53
1:G:163:ASP:N	5:G:329:HOH:O	2.33	0.53
1:A:172:GLU:H	1:A:172:GLU:CD	2.12	0.53
2:B:73:HIS:CD2	2:B:94:LEU:HD12	2.44	0.53
1:E:72:GLY:O	1:E:75:THR:HB	2.08	0.53
1:C:168:HIS:H	1:C:171:LEU:CD1	2.20	0.53
1:A:73:VAL:CG1	2:B:14:GLY:HA3	2.37	0.53
2:D:144:CYS:HB2	2:D:158:TRP:CZ2	2.44	0.53
2:D:108:ASN:O	2:D:113:GLU:HB2	2.08	0.52
2:B:83:ASP:N	2:B:83:ASP:OD2	2.41	0.52
2:D:65:ARG:CG	2:D:66:TYR:N	2.73	0.52
1:A:33:PHE:HB2	1:A:43:VAL:O	2.09	0.52
2:D:137:ASN:O	2:D:138:HIS:HB2	2.09	0.52
3:G:310:NAG:O4	3:G:310:NAG:N2	2.40	0.52
2:D:132:ARG:O	2:D:139:HIS:HB3	2.10	0.52
2:H:201:HIS:HD2	5:H:313:HOH:O	1.91	0.52
1:E:30:ASP:HB3	2:F:180:TRP:CE2	2.45	0.52
1:C:15:GLN:NE2	1:C:115:PRO:HB2	2.24	0.52
2:H:63:TYR:HB2	2:H:79:LEU:HD12	1.90	0.52
1:C:152:LEU:HD23	1:C:153:THR:N	2.24	0.52
2:H:106:ARG:CG	2:H:110:GLU:OE1	2.56	0.52
2:D:166:THR:O	2:D:169:VAL:HG13	2.10	0.52
1:C:56:ASP:OD2	1:C:58:GLN:HG3	2.09	0.52
1:C:77:ARG:NH1	2:D:83:ASP:OD2	2.40	0.52
1:A:9:TYR:CD1	1:A:25:PHE:CD2	2.98	0.52
2:F:38:MET:CE	2:F:40:GLU:OE2	2.57	0.52
2:B:84:ALA:O	2:B:88:ASN:ND2	2.42	0.52
2:H:204:HIS:HB3	2:H:205:PRO:CD	2.38	0.52
2:B:124:PRO:HB3	2:B:149:PHE:HB3	1.92	0.52
1:G:32:LEU:O	1:G:33:PHE:HB3	2.10	0.52
2:B:137:ASN:O	2:B:138:HIS:HB2	2.08	0.52
1:E:111:ASP:OD1	1:E:112:ASN:N	2.38	0.52
2:B:98:ARG:NH1	2:B:98:ARG:HG2	2.25	0.52
2:H:120:ARG:NH1	2:H:180:TRP:O	2.40	0.52
2:F:12:VAL:O	2:F:13:ASP:C	2.48	0.52
1:G:60:GLY:O	1:G:64:ILE:HG12	2.10	0.52
2:F:175:ILE:HB	2:F:183:GLN:O	2.10	0.52
2:B:113:GLU:HA	2:B:113:GLU:OE1	2.09	0.52
2:D:72:GLU:HB2	2:D:88:ASN:OD1	2.09	0.52

Continued on next page...

Continued from previous page...

Atom-1	Atom-2	Interatomic distance (Å)	Clash overlap (Å)
1:G:148:LYS:C	1:G:149:LEU:HD22	2.31	0.52
2:B:163:GLN:H	2:B:163:GLN:HE21	1.57	0.52
1:A:122:TRP:CZ3	1:A:164:CYS:HB2	2.45	0.52
2:D:203:GLU:O	2:D:204:HIS:CB	2.57	0.52
1:C:159:ASP:CG	1:C:160:ASP:H	2.14	0.51
1:A:159:ASP:CG	1:A:160:ASP:H	2.13	0.51
2:B:181:THR:N	5:B:333:HOH:O	2.42	0.51
1:E:96:SER:HB2	1:E:97:PRO:CD	2.30	0.51
1:A:92:VAL:HA	1:A:107:ILE:O	2.10	0.51
1:E:33:PHE:HB2	1:E:43:VAL:O	2.10	0.51
2:B:20:VAL:CG1	2:B:21:PRO:HD2	2.38	0.51
2:H:126:VAL:HG21	2:H:211:ILE:HD12	1.92	0.51
1:C:104:ASN:OD1	1:C:105:THR:N	2.43	0.51
2:D:12:VAL:O	2:D:13:ASP:C	2.49	0.51
1:A:46:LEU:O	1:A:49:PHE:HB2	2.10	0.51
1:G:161:ILE:HG22	1:G:180:GLU:HG3	1.91	0.51
1:C:76:LYS:C	1:C:78:SER:H	2.14	0.51
1:G:123:LEU:HD11	1:G:165:LYS:HB2	1.92	0.51
2:H:35:TYR:OH	2:H:56:TYR:HB3	2.11	0.51
1:E:1:ILE:N	1:E:1:ILE:HD13	2.26	0.51
2:F:67:ASP:HB3	2:F:70:VAL:HG23	1.92	0.51
1:E:171:LEU:HD12	1:E:171:LEU:O	2.10	0.51
2:H:160:ARG:HG2	5:H:331:HOH:O	2.10	0.51
2:D:9:ASN:HB2	2:D:87:TRP:CE2	2.46	0.51
1:G:63:ASN:O	1:G:67:VAL:HG23	2.11	0.51
2:B:166:THR:C	2:B:169:VAL:HG13	2.31	0.51
1:A:14:TYR:CZ	1:A:68:LYS:HD3	2.46	0.51
1:G:92:VAL:HA	1:G:107:ILE:O	2.11	0.51
1:C:143:ASP:CG	2:D:60:ARG:HH21	2.13	0.51
2:B:140:ASN:HB2	2:B:190:MET:O	2.11	0.51
2:D:119:ARG:CZ	2:D:119:ARG:HB3	2.41	0.51
2:F:56:TYR:CD1	2:F:56:TYR:N	2.79	0.51
2:D:43:PHE:CE2	2:D:109:TYR:HB2	2.45	0.51
1:E:76:LYS:C	1:E:78:SER:H	2.13	0.51
2:F:120:ARG:O	2:F:151:PRO:HD3	2.10	0.51
1:C:168:HIS:O	1:C:171:LEU:HD12	2.10	0.51
1:G:63:ASN:HB3	5:G:330:HOH:O	2.10	0.51
2:H:165:GLU:OE1	2:H:166:THR:N	2.42	0.51
2:F:44:THR:HG22	2:F:49:ARG:O	2.11	0.51
2:H:60:ARG:N	5:H:323:HOH:O	2.21	0.51
3:A:301:NAG:H83	2:B:18:SER:OG	2.10	0.51

Continued on next page...

Continued from previous page...

Atom-1	Atom-2	Interatomic distance (Å)	Clash overlap (Å)
2:F:145:SER:HB2	5:F:334:HOH:O	2.10	0.51
2:H:140:ASN:HB2	2:H:190:MET:O	2.11	0.51
2:H:153:LYS:N	5:H:324:HOH:O	2.44	0.51
1:E:79:ASN:HB2	2:F:18:SER:HA	1.93	0.51
1:C:92:VAL:HA	1:C:107:ILE:O	2.11	0.51
2:B:136:LEU:HD13	2:B:140:ASN:ND2	2.26	0.50
1:A:96:SER:CB	1:A:97:PRO:HD2	2.41	0.50
2:F:165:GLU:HA	5:F:345:HOH:O	2.11	0.50
2:F:61:GLU:OE2	2:F:77:THR:HG21	2.11	0.50
2:H:172:THR:HG21	2:H:185:LEU:HB2	1.92	0.50
1:G:19:ASP:O	1:G:19:ASP:OD2	2.29	0.50
2:H:128:ILE:HG13	2:H:215:TRP:HB2	1.93	0.50
2:B:126:VAL:HG21	2:B:211:ILE:CD1	2.42	0.50
2:F:132:ARG:O	2:F:139:HIS:HB3	2.11	0.50
2:H:104:VAL:O	2:H:104:VAL:HG12	2.12	0.50
1:E:10:GLY:HA2	1:E:23:TYR:OH	2.11	0.50
1:A:71:LEU:HD13	2:B:35:TYR:HB2	1.93	0.50
2:B:65:ARG:CG	2:B:66:TYR:N	2.73	0.50
2:H:12:VAL:O	2:H:13:ASP:C	2.49	0.50
1:G:180:GLU:HG2	1:G:182:GLU:H	1.76	0.50
1:C:152:LEU:C	1:C:152:LEU:HD23	2.31	0.50
2:F:131:SER:OG	2:F:132:ARG:N	2.42	0.50
1:A:46:LEU:HB2	5:A:304:HOH:O	2.10	0.50
2:H:132:ARG:O	2:H:139:HIS:HB3	2.12	0.50
2:H:94:LEU:HD21	2:H:98:ARG:NH2	2.23	0.50
1:A:74:LEU:O	1:A:78:SER:HB2	2.12	0.50
1:A:76:LYS:C	1:A:78:SER:H	2.15	0.50
2:H:100:GLU:HG2	2:H:104:VAL:HG21	1.94	0.50
2:H:131:SER:HA	5:H:336:HOH:O	2.11	0.50
1:E:89:GLN:O	1:E:110:VAL:HG13	2.12	0.50
2:F:57:ILE:HD11	5:F:319:HOH:O	2.12	0.50
1:C:74:LEU:HD21	2:D:63:TYR:CE2	2.46	0.50
1:A:110:VAL:O	1:A:147:HIS:HB2	2.12	0.50
1:C:110:VAL:O	1:C:147:HIS:HB2	2.11	0.50
1:E:19:ASP:O	1:E:19:ASP:OD2	2.30	0.50
1:A:16:SER:HB3	1:A:17:PRO:CD	2.41	0.50
2:H:172:THR:CG2	2:H:185:LEU:HB2	2.42	0.50
2:D:29:SER:O	2:D:30:GLU:HG3	2.12	0.50
1:C:98:VAL:HG23	5:C:331:HOH:O	2.12	0.50
2:F:120:ARG:NH1	2:F:180:TRP:CB	2.72	0.50
1:G:158:ASP:HA	5:G:325:HOH:O	2.11	0.50

Continued on next page...

Continued from previous page...

Atom-1	Atom-2	Interatomic distance (Å)	Clash overlap (Å)
1:A:117:VAL:HG11	1:A:169:TRP:CZ2	2.47	0.50
1:A:38:ASP:O	1:A:40:LYS:HG3	2.12	0.50
1:C:6:VAL:O	1:C:6:VAL:HG13	2.11	0.50
2:H:155:LYS:HD2	2:H:157:ARG:NH2	2.19	0.50
2:B:174:LEU:CD2	2:B:174:LEU:H	2.20	0.50
2:F:111:GLY:O	2:F:115:HIS:CD2	2.58	0.50
1:C:33:PHE:C	1:C:33:PHE:CD1	2.84	0.50
2:H:124:PRO:HD2	2:H:207:LEU:HD21	1.93	0.49
1:E:152:LEU:HD23	1:E:153:THR:N	2.27	0.49
2:F:20:VAL:CG1	2:F:21:PRO:HD2	2.40	0.49
1:C:136:THR:HG21	1:C:149:LEU:HB2	1.93	0.49
1:C:100:LEU:HD22	1:C:157:SER:HA	1.94	0.49
1:A:121:THR:HG23	5:A:332:HOH:O	2.11	0.49
2:H:160:ARG:NH1	2:H:198:TYR:CE2	2.80	0.49
1:G:16:SER:HB3	1:G:17:PRO:CD	2.43	0.49
1:C:56:ASP:CG	1:C:58:GLN:HG3	2.32	0.49
2:H:94:LEU:CD2	2:H:98:ARG:HH21	2.22	0.49
2:B:66:TYR:OH	2:B:98:ARG:HD3	2.11	0.49
2:B:94:LEU:CD2	2:B:98:ARG:NH2	2.74	0.49
1:G:15:GLN:HE22	1:G:117:VAL:HG23	1.75	0.49
1:G:162:TYR:CD2	1:G:179:TRP:HZ3	2.31	0.49
1:C:85:ASN:ND2	2:D:29:SER:HA	2.28	0.49
1:C:130:ALA:N	5:C:320:HOH:O	2.44	0.49
2:D:38:MET:HG2	2:D:38:MET:O	2.12	0.49
1:G:79:ASN:HA	5:G:312:HOH:O	2.12	0.49
2:H:124:PRO:CD	2:H:207:LEU:HD21	2.43	0.49
2:F:163:GLN:H	2:F:163:GLN:HE21	1.60	0.49
1:A:161:ILE:HD12	1:A:178:HIS:NE2	2.27	0.49
1:A:124:ARG:HG2	1:A:125:ASN:HD22	1.78	0.49
2:B:108:ASN:O	2:B:113:GLU:HB2	2.13	0.49
2:H:166:THR:O	2:H:169:VAL:CG2	2.60	0.49
2:H:63:TYR:CE2	2:H:64:VAL:CG2	2.96	0.49
2:F:92:GLU:HG2	5:F:348:HOH:O	2.12	0.49
2:D:123:GLN:HE21	2:D:207:LEU:CD1	2.25	0.49
1:A:33:PHE:CD1	1:A:33:PHE:C	2.84	0.49
1:C:82:PRO:HA	2:D:33:PHE:CE1	2.48	0.49
2:H:136:LEU:CD2	2:H:136:LEU:H	2.20	0.49
1:C:171:LEU:HD12	1:C:171:LEU:O	2.13	0.49
1:G:77:ARG:O	2:H:19:LEU:HD23	2.12	0.49
2:D:100:GLU:HB3	2:D:104:VAL:HB	1.95	0.49
2:D:66:TYR:C	2:D:66:TYR:CD2	2.86	0.49

Continued on next page...

Continued from previous page...

Atom-1	Atom-2	Interatomic distance (Å)	Clash overlap (Å)
2:B:120:ARG:HH12	2:B:180:TRP:HB3	1.77	0.49
2:F:124:PRO:CD	2:F:207:LEU:HD21	2.43	0.49
1:E:17:PRO:HG3	2:F:32:HIS:HA	1.95	0.49
2:D:42:TYR:H	2:D:42:TYR:HD1	1.59	0.49
1:G:1:ILE:HD13	1:G:1:ILE:N	2.27	0.49
2:H:175:ILE:HG22	2:H:175:ILE:O	2.13	0.49
2:F:199:THR:HG22	2:F:214:GLU:HG2	1.93	0.49
2:D:123:GLN:HG2	2:D:207:LEU:HD13	1.94	0.49
1:A:16:SER:O	5:A:309:HOH:O	2.19	0.49
1:G:172:GLU:H	1:G:172:GLU:CD	2.13	0.49
1:E:15:GLN:NE2	1:E:115:PRO:HB2	2.28	0.49
2:F:203:GLU:O	2:F:204:HIS:CB	2.61	0.49
2:D:132:ARG:HB2	2:D:141:THR:HB	1.95	0.49
2:H:109:TYR:HA	2:H:113:GLU:HB2	1.93	0.49
1:A:167:GLU:HA	1:A:171:LEU:HD11	1.94	0.49
1:A:45:MET:HB2	5:A:308:HOH:O	2.12	0.49
1:A:173:GLU:HG2	5:A:311:HOH:O	2.12	0.49
2:H:88:ASN:OD1	2:H:94:LEU:HD11	2.12	0.49
2:B:152:ALA:O	5:B:306:HOH:O	2.20	0.49
1:A:139:PHE:HB2	1:A:147:HIS:CD2	2.48	0.49
1:G:85:ASN:HD21	1:G:169:TRP:HB2	1.78	0.48
1:G:45:MET:HE1	2:H:179:ASP:HA	1.94	0.48
2:D:204:HIS:CB	2:D:205:PRO:HD3	2.42	0.48
1:C:32:LEU:CD2	2:D:180:TRP:CH2	2.94	0.48
1:E:120:ILE:HD11	1:E:148:LYS:HD2	1.95	0.48
2:B:43:PHE:CD2	2:B:109:TYR:CD2	3.02	0.48
1:E:118:ILE:HD11	1:E:166:VAL:HG13	1.95	0.48
2:B:88:ASN:OD1	2:B:94:LEU:HD13	2.14	0.48
1:E:95:LYS:NZ	2:F:179:ASP:OD2	2.43	0.48
2:D:136:LEU:H	2:D:136:LEU:CD2	2.22	0.48
2:D:132:ARG:HB2	2:D:141:THR:CB	2.43	0.48
2:H:56:TYR:CD1	2:H:56:TYR:N	2.81	0.48
2:B:194:ARG:HG3	2:B:194:ARG:HH11	1.77	0.48
1:A:122:TRP:CD1	1:A:152:LEU:HB2	2.48	0.48
1:E:110:VAL:O	1:E:147:HIS:HB2	2.13	0.48
1:C:71:LEU:HD13	2:D:35:TYR:HB2	1.94	0.48
2:B:132:ARG:HB2	2:B:141:THR:CB	2.43	0.48
2:D:204:HIS:HB3	2:D:205:PRO:CD	2.41	0.48
1:C:108:CYS:HB2	1:C:122:TRP:CH2	2.47	0.48
2:D:143:VAL:HG22	2:D:187:MET:HG3	1.96	0.48
2:H:125:ASN:ND2	2:H:148:ASP:HB2	2.28	0.48

Continued on next page...

Continued from previous page...

Atom-1	Atom-2	Interatomic distance (Å)	Clash overlap (Å)
1:G:103:PRO:HB2	5:G:317:HOH:O	2.12	0.48
1:G:1:ILE:HD13	1:G:1:ILE:H1	1.78	0.48
2:F:42:TYR:N	2:F:42:TYR:CD1	2.80	0.48
1:E:139:PHE:HB2	1:E:147:HIS:CD2	2.49	0.48
2:B:63:TYR:CE2	2:B:64:VAL:HG23	2.48	0.48
1:C:77:ARG:N	2:D:16:GLY:HA2	2.29	0.48
2:D:87:TRP:O	2:D:94:LEU:HB2	2.13	0.48
2:B:203:GLU:O	2:B:204:HIS:CB	2.61	0.48
1:C:122:TRP:CZ3	1:C:164:CYS:HB2	2.49	0.48
1:E:122:TRP:CE2	1:E:152:LEU:HB2	2.48	0.48
1:G:56:ASP:OD2	1:G:58:GLN:NE2	2.45	0.48
2:F:44:THR:CG2	2:F:49:ARG:HB3	2.43	0.48
1:E:92:VAL:HA	1:E:107:ILE:O	2.13	0.48
2:F:136:LEU:HA	2:F:140:ASN:HD21	1.79	0.48
1:G:161:ILE:HG21	1:G:180:GLU:OE1	2.13	0.48
1:A:56:ASP:OD1	1:A:58:GLN:HG3	2.13	0.48
2:B:144:CYS:HB2	2:B:158:TRP:CZ2	2.48	0.48
2:B:199:THR:CG2	2:B:214:GLU:HG2	2.43	0.48
1:C:58:GLN:O	1:C:62:GLN:HB2	2.14	0.48
2:D:187:MET:SD	2:D:187:MET:N	2.87	0.48
1:C:180:GLU:HG3	1:C:181:PRO:HD2	1.96	0.48
2:F:140:ASN:HB2	2:F:190:MET:O	2.14	0.48
1:G:136:THR:OG1	1:G:139:PHE:HE1	1.96	0.48
1:A:58:GLN:O	1:A:62:GLN:HB2	2.14	0.48
1:E:121:THR:OG1	1:E:165:LYS:HB3	2.14	0.48
2:H:165:GLU:OE1	2:H:165:GLU:HA	2.14	0.48
1:A:104:ASN:OD1	1:A:105:THR:N	2.47	0.48
1:A:77:ARG:N	2:B:16:GLY:HA2	2.27	0.48
2:F:172:THR:HG21	2:F:185:LEU:HB2	1.96	0.48
1:C:160:ASP:C	1:C:160:ASP:OD2	2.53	0.48
2:B:112:PRO:O	2:B:116:THR:HG22	2.14	0.48
2:F:193:ARG:N	5:F:331:HOH:O	2.42	0.48
2:H:57:ILE:HG23	2:H:61:GLU:C	2.34	0.48
2:B:87:TRP:O	2:B:94:LEU:HB2	2.13	0.47
2:F:179:ASP:O	2:F:180:TRP:HB2	2.14	0.47
2:H:161:ASN:HA	2:H:197:VAL:O	2.14	0.47
2:H:149:PHE:HE1	2:H:183:GLN:HA	1.79	0.47
1:A:72:GLY:O	1:A:76:LYS:HG3	2.14	0.47
2:B:132:ARG:O	2:B:139:HIS:HB3	2.13	0.47
2:B:136:LEU:HA	2:B:140:ASN:ND2	2.28	0.47
2:D:121:LEU:HB3	2:D:206:SER:HB3	1.96	0.47

Continued on next page...

Continued from previous page...

Atom-1	Atom-2	Interatomic distance (Å)	Clash overlap (Å)
1:A:19:ASP:HB3	1:C:52:LEU:HD21	1.95	0.47
1:C:66:VAL:HG11	2:D:8:ALA:O	2.14	0.47
2:F:63:TYR:C	2:F:76:VAL:CG1	2.82	0.47
2:B:73:HIS:HD2	2:B:94:LEU:HD12	1.79	0.47
1:C:32:LEU:CD2	2:D:180:TRP:HH2	2.26	0.47
2:B:118:LEU:HB3	5:B:315:HOH:O	2.13	0.47
1:G:103:PRO:CD	5:G:317:HOH:O	2.62	0.47
1:G:107:ILE:HG12	1:G:151:TYR:CD2	2.48	0.47
1:C:125:ASN:HB2	1:C:127:LYS:NZ	2.30	0.47
2:B:161:ASN:HA	2:B:197:VAL:O	2.15	0.47
2:B:12:VAL:O	2:B:13:ASP:C	2.52	0.47
1:E:120:ILE:CD1	1:E:148:LYS:HD2	2.44	0.47
1:E:152:LEU:HD23	1:E:152:LEU:C	2.34	0.47
2:H:100:GLU:HG2	2:H:104:VAL:CG2	2.45	0.47
1:E:83:ALA:HA	5:E:314:HOH:O	2.13	0.47
2:H:81:ARG:HB2	2:H:82:PRO:HD3	1.96	0.47
1:C:102:GLN:NE2	1:C:103:PRO:HD2	2.28	0.47
2:D:83:ASP:N	2:D:83:ASP:OD2	2.45	0.47
2:H:120:ARG:HH12	2:H:180:TRP:CB	2.27	0.47
2:H:206:SER:H	2:H:207:LEU:HD22	1.80	0.47
2:H:123:GLN:CG	2:H:206:SER:OG	2.62	0.47
2:B:123:GLN:HG3	2:B:206:SER:HB2	1.95	0.47
2:F:146:VAL:HG11	2:F:154:ILE:HD11	1.97	0.47
2:F:154:ILE:HG12	2:F:155:LYS:N	2.29	0.47
2:D:58:TYR:CE2	2:D:59:ASN:ND2	2.82	0.47
1:E:123:LEU:HD11	1:E:165:LYS:HD2	1.96	0.47
2:F:152:ALA:HB2	2:F:182:PHE:CE2	2.50	0.47
2:D:128:ILE:HD11	2:D:215:TRP:HD1	1.80	0.47
2:B:131:SER:OG	2:B:132:ARG:N	2.47	0.47
2:H:153:LYS:HG2	2:H:204:HIS:CD2	2.49	0.47
2:H:41:CYS:CB	2:H:52:TYR:HD1	2.21	0.47
2:D:121:LEU:HG	2:D:205:PRO:O	2.15	0.47
1:G:163:ASP:OD1	1:G:176:LEU:HG	2.15	0.47
1:E:73:VAL:CG1	1:E:77:ARG:HH21	2.27	0.47
1:E:122:TRP:CZ3	1:E:164:CYS:HB2	2.49	0.47
2:D:173:GLN:HB3	2:D:174:LEU:HD23	1.97	0.47
5:G:323:HOH:O	2:H:40:GLU:HB2	2.14	0.47
1:C:98:VAL:CG2	5:C:331:HOH:O	2.63	0.47
1:A:6:VAL:HG13	1:A:6:VAL:O	2.14	0.47
2:F:128:ILE:HD13	2:F:128:ILE:H	1.79	0.47
1:E:15:GLN:CG	2:F:34:VAL:HG22	2.40	0.47

Continued on next page...

Continued from previous page...

Atom-1	Atom-2	Interatomic distance (Å)	Clash overlap (Å)
1:C:74:LEU:HD21	2:D:63:TYR:CZ	2.50	0.47
2:B:172:THR:HG21	2:B:185:LEU:HB2	1.95	0.47
2:F:161:ASN:HA	2:F:197:VAL:O	2.15	0.47
2:B:203:GLU:O	2:B:204:HIS:HB3	2.15	0.47
2:F:174:LEU:HB2	5:F:329:HOH:O	2.15	0.47
1:A:125:ASN:HB2	1:A:127:LYS:NZ	2.30	0.47
2:B:88:ASN:OD1	2:B:94:LEU:CD1	2.63	0.47
1:E:45:MET:CE	2:F:179:ASP:HA	2.44	0.47
1:C:15:GLN:CD	1:C:116:PRO:HG2	2.36	0.47
2:H:163:GLN:H	2:H:163:GLN:HE21	1.61	0.47
1:G:76:LYS:C	1:G:78:SER:H	2.17	0.47
1:G:148:LYS:CG	1:G:149:LEU:N	2.76	0.47
2:B:109:TYR:CZ	2:B:118:LEU:HD21	2.50	0.47
2:F:194:ARG:HG3	2:F:194:ARG:HH11	1.80	0.47
2:D:113:GLU:OE1	2:D:117:SER:OG	2.16	0.46
2:H:108:ASN:O	2:H:113:GLU:HB2	2.15	0.46
2:H:63:TYR:C	2:H:76:VAL:CG1	2.83	0.46
1:E:148:LYS:CG	1:E:149:LEU:N	2.77	0.46
2:F:1:PHE:CE1	2:F:115:HIS:CG	3.03	0.46
2:H:78:GLU:C	2:H:80:GLY:H	2.17	0.46
2:F:50:ILE:HG22	2:F:51:ARG:N	2.29	0.46
1:E:22:GLN:HE22	1:E:138:PHE:HB2	1.80	0.46
2:D:136:LEU:HA	2:D:140:ASN:ND2	2.30	0.46
2:B:142:LEU:HD13	2:B:190:MET:SD	2.54	0.46
2:D:204:HIS:CB	2:D:205:PRO:CD	2.93	0.46
2:F:169:VAL:HG23	2:F:169:VAL:O	2.14	0.46
2:H:203:GLU:O	2:H:204:HIS:HB3	2.15	0.46
1:G:9:TYR:CD1	1:G:25:PHE:CD2	3.02	0.46
2:F:171:SER:HB2	2:F:186:VAL:HG22	1.97	0.46
2:H:29:SER:O	2:H:30:GLU:HG3	2.14	0.46
1:E:114:PHE:CE1	5:E:324:HOH:O	2.67	0.46
1:E:109:PHE:HA	1:E:149:LEU:CD1	2.43	0.46
2:B:154:ILE:HG12	2:B:155:LYS:N	2.31	0.46
1:A:30:ASP:HB3	2:B:180:TRP:CD2	2.50	0.46
2:H:132:ARG:HB2	2:H:141:THR:CB	2.45	0.46
2:F:174:LEU:O	2:F:175:ILE:HB	2.15	0.46
1:C:135:GLU:CG	1:C:148:LYS:HD3	2.45	0.46
1:E:134:TYR:HA	5:E:309:HOH:O	2.16	0.46
1:E:31:GLU:OE1	1:E:137:SER:HB2	2.16	0.46
2:F:116:THR:CG2	2:F:117:SER:N	2.73	0.46
1:A:167:GLU:CB	3:A:302:NAG:H81	2.40	0.46

Continued on next page...

Continued from previous page...

Atom-1	Atom-2	Interatomic distance (Å)	Clash overlap (Å)
1:G:68:LYS:HZ3	1:G:68:LYS:CB	2.29	0.46
2:D:174:LEU:HG	2:D:175:ILE:H	1.80	0.46
2:H:166:THR:O	2:H:169:VAL:HG13	2.16	0.46
1:G:11:ILE:HD13	1:G:140:VAL:HG21	1.97	0.46
1:G:31:GLU:OE1	1:G:137:SER:HB2	2.15	0.46
2:B:101:LEU:O	2:B:101:LEU:HD23	2.15	0.46
1:E:159:ASP:CG	1:E:160:ASP:H	2.19	0.46
2:B:4:GLN:HG2	2:B:103:THR:O	2.15	0.46
1:A:92:VAL:HG12	1:A:93:PHE:N	2.29	0.46
1:G:92:VAL:HG12	1:G:93:PHE:N	2.31	0.46
1:E:115:PRO:O	1:E:168:HIS:HE1	1.98	0.46
2:B:64:VAL:HG12	2:B:65:ARG:N	2.31	0.46
1:A:135:GLU:OE2	1:A:148:LYS:CE	2.63	0.46
2:D:67:ASP:HB3	2:D:70:VAL:HG23	1.97	0.46
2:D:158:TRP:CG	2:D:188:LEU:HD22	2.51	0.46
1:A:125:ASN:HB2	1:A:127:LYS:HZ2	1.81	0.46
2:D:136:LEU:HB2	5:D:326:HOH:O	2.15	0.46
2:D:136:LEU:CB	1:E:142:ARG:HH12	2.25	0.46
2:B:207:LEU:HG	2:B:211:ILE:HG23	1.98	0.46
1:E:77:ARG:HG2	1:E:77:ARG:O	2.15	0.46
1:A:109:PHE:HE1	1:A:147:HIS:CD2	2.34	0.46
2:F:119:ARG:HB3	2:F:119:ARG:CZ	2.46	0.46
1:C:143:ASP:CG	2:D:60:ARG:NH2	2.69	0.46
1:E:12:SER:HB2	1:E:67:VAL:HG21	1.97	0.46
1:C:115:PRO:HB2	1:C:116:PRO:HD2	1.97	0.46
1:G:10:GLY:HA2	1:G:23:TYR:OH	2.16	0.46
2:H:169:VAL:HG23	2:H:169:VAL:O	2.16	0.46
2:B:126:VAL:HG21	2:B:211:ILE:HD11	1.98	0.46
2:F:149:PHE:CE1	2:F:183:GLN:HA	2.50	0.46
1:C:94:PRO:CB	5:C:331:HOH:O	2.63	0.46
2:D:106:ARG:O	2:D:110:GLU:HG3	2.16	0.46
2:H:152:ALA:HB2	2:H:182:PHE:CE2	2.51	0.45
1:G:71:LEU:O	1:G:72:GLY:C	2.55	0.45
1:G:122:TRP:O	1:G:123:LEU:HD23	2.15	0.45
1:G:159:ASP:CG	1:G:160:ASP:H	2.19	0.45
1:G:68:LYS:HB2	1:G:68:LYS:HZ3	1.81	0.45
1:G:11:ILE:HG13	1:G:24:THR:O	2.15	0.45
1:E:143:ASP:CG	2:F:60:ARG:NH2	2.68	0.45
1:G:17:PRO:HG3	2:H:32:HIS:HA	1.96	0.45
2:H:88:ASN:OD1	2:H:94:LEU:HD13	2.16	0.45
2:D:153:LYS:HD3	2:D:204:HIS:CD2	2.50	0.45

Continued on next page...

Continued from previous page...

Atom-1	Atom-2	Interatomic distance (Å)	Clash overlap (Å)
2:B:126:VAL:CG1	2:B:211:ILE:HD11	2.46	0.45
2:H:132:ARG:HB2	2:H:141:THR:OG1	2.16	0.45
1:G:6:VAL:HG13	1:G:6:VAL:O	2.17	0.45
2:B:63:TYR:CA	2:B:76:VAL:HG13	2.46	0.45
1:E:136:THR:HG23	1:E:151:TYR:HE1	1.80	0.45
1:C:4:ASP:HB2	5:D:323:HOH:O	2.15	0.45
1:C:139:PHE:HB2	1:C:147:HIS:CD2	2.52	0.45
2:B:119:ARG:CB	2:B:119:ARG:HH11	2.29	0.45
2:F:78:GLU:C	2:F:80:GLY:H	2.19	0.45
2:F:113:GLU:OE1	2:F:113:GLU:CA	2.61	0.45
2:H:193:ARG:HB2	2:H:196:GLU:HG3	1.97	0.45
2:H:153:LYS:HZ3	2:H:204:HIS:CD2	2.32	0.45
2:H:173:GLN:HB3	2:H:174:LEU:HD23	1.98	0.45
2:D:166:THR:C	2:D:169:VAL:HG13	2.37	0.45
2:D:124:PRO:HB3	2:D:149:PHE:HB3	1.98	0.45
1:E:48:GLU:HG2	1:E:49:PHE:H	1.81	0.45
2:D:155:LYS:HD2	2:D:157:ARG:HH21	1.80	0.45
2:H:94:LEU:CD2	2:H:98:ARG:NH2	2.79	0.45
2:F:107:HIS:HD2	2:F:108:ASN:OD1	2.00	0.45
2:D:120:ARG:CG	2:D:120:ARG:NH1	2.78	0.45
2:B:204:HIS:O	2:B:206:SER:N	2.50	0.45
2:D:119:ARG:NH1	2:D:119:ARG:CB	2.77	0.45
2:B:85:GLU:OE2	2:B:85:GLU:HA	2.17	0.45
1:G:51:GLN:OE1	1:G:51:GLN:HA	2.16	0.45
2:F:88:ASN:OD1	2:F:94:LEU:HD13	2.17	0.45
1:C:115:PRO:O	1:C:168:HIS:HE1	2.00	0.45
2:D:161:ASN:HA	2:D:197:VAL:O	2.17	0.45
1:C:19:ASP:OD2	1:C:19:ASP:O	2.35	0.45
1:C:33:PHE:HB2	1:C:43:VAL:O	2.16	0.45
2:F:108:ASN:O	2:F:113:GLU:HB2	2.17	0.45
1:C:148:LYS:CG	1:C:149:LEU:N	2.79	0.45
2:B:165:GLU:OE2	2:B:167:VAL:HG22	2.16	0.45
2:D:194:ARG:HG3	2:D:194:ARG:NH1	2.31	0.45
1:A:159:ASP:CG	1:A:160:ASP:N	2.70	0.45
2:H:9:ASN:HB2	2:H:87:TRP:CZ2	2.52	0.45
1:G:56:ASP:OD2	1:G:58:GLN:HG3	2.16	0.45
1:E:119:ASN:ND2	3:E:308:NAG:C7	2.80	0.45
2:B:78:GLU:C	2:B:80:GLY:H	2.20	0.45
1:E:12:SER:OG	1:E:63:ASN:ND2	2.40	0.45
1:C:104:ASN:HB3	1:C:154:PHE:CE1	2.51	0.45
2:B:120:ARG:NH1	2:B:120:ARG:HG2	2.31	0.45

Continued on next page...

Continued from previous page...

Atom-1	Atom-2	Interatomic distance (Å)	Clash overlap (Å)
2:D:159:PHE:HD1	2:D:163:GLN:C	2.20	0.45
2:H:4:GLN:HG3	2:H:5:LYS:N	2.31	0.45
1:G:48:GLU:HG2	1:G:49:PHE:H	1.82	0.45
1:C:159:ASP:CG	1:C:160:ASP:N	2.70	0.45
2:H:9:ASN:CB	2:H:87:TRP:CE2	3.00	0.45
2:B:173:GLN:HB3	2:B:174:LEU:HD23	1.98	0.45
2:H:111:GLY:O	2:H:115:HIS:CD2	2.66	0.45
2:D:123:GLN:HE21	2:D:207:LEU:HD13	1.81	0.45
2:B:66:TYR:C	2:B:66:TYR:CD2	2.89	0.44
1:E:104:ASN:O	1:E:154:PHE:CD1	2.70	0.44
1:C:139:PHE:HB2	1:C:147:HIS:NE2	2.33	0.44
1:E:68:LYS:HZ3	1:E:68:LYS:CB	2.30	0.44
1:A:85:ASN:ND2	2:B:29:SER:CB	2.80	0.44
1:E:168:HIS:O	1:E:171:LEU:HD12	2.17	0.44
2:F:120:ARG:NH1	2:F:120:ARG:HG2	2.29	0.44
1:G:96:SER:HB2	1:G:97:PRO:CD	2.38	0.44
3:C:305:NAG:C8	5:C:332:HOH:O	2.64	0.44
2:D:94:LEU:CD2	2:D:98:ARG:NH2	2.74	0.44
2:B:208:LYS:HG2	5:B:314:HOH:O	2.16	0.44
1:E:77:ARG:N	2:F:16:GLY:HA2	2.32	0.44
1:A:56:ASP:OD2	1:A:58:GLN:NE2	2.50	0.44
1:A:135:GLU:OE2	1:A:148:LYS:HD3	2.17	0.44
2:F:126:VAL:HG23	2:F:213:VAL:HG21	1.99	0.44
2:B:156:VAL:CG1	2:B:186:VAL:HG21	2.44	0.44
2:H:101:LEU:HD23	2:H:101:LEU:C	2.37	0.44
1:C:157:SER:HB2	1:C:159:ASP:OD1	2.16	0.44
1:C:12:SER:HB2	1:C:67:VAL:HG21	1.99	0.44
1:A:115:PRO:O	1:A:168:HIS:CE1	2.67	0.44
1:E:11:ILE:HA	2:F:37:PHE:O	2.17	0.44
2:B:1:PHE:CD1	2:B:1:PHE:N	2.84	0.44
1:E:18:GLY:C	1:E:20:ILE:HG13	2.37	0.44
2:D:113:GLU:HA	2:D:116:THR:HG22	1.99	0.44
2:F:112:PRO:C	2:F:116:THR:HG22	2.36	0.44
2:F:203:GLU:O	2:F:204:HIS:HB3	2.17	0.44
1:C:73:VAL:CG1	2:D:14:GLY:HA3	2.43	0.44
1:E:143:ASP:O	2:F:60:ARG:NE	2.48	0.44
2:F:128:ILE:HG13	2:F:215:TRP:HB2	1.99	0.44
1:A:134:TYR:HD2	1:A:151:TYR:CD1	2.35	0.44
5:G:323:HOH:O	2:H:40:GLU:CA	2.60	0.44
1:G:16:SER:HB3	1:G:17:PRO:HD3	2.00	0.44
2:B:106:ARG:HG2	2:B:110:GLU:OE1	2.17	0.44

Continued on next page...

Continued from previous page...

Atom-1	Atom-2	Interatomic distance (Å)	Clash overlap (Å)
2:D:58:TYR:O	2:D:59:ASN:HB2	2.17	0.44
1:C:144:TYR:CD2	2:D:57:ILE:HG12	2.52	0.44
1:E:96:SER:CB	1:E:97:PRO:HD2	2.31	0.44
2:H:126:VAL:HG21	2:H:211:ILE:HD11	1.99	0.44
1:A:148:LYS:O	1:A:149:LEU:HD22	2.17	0.44
2:D:78:GLU:HA	2:D:78:GLU:OE1	2.17	0.44
1:C:124:ARG:HE	1:C:162:TYR:HE1	1.65	0.44
1:C:180:GLU:HG2	1:C:181:PRO:N	2.33	0.44
2:H:66:TYR:C	2:H:66:TYR:CD2	2.91	0.44
2:D:166:THR:O	2:D:169:VAL:CG2	2.65	0.44
1:E:85:ASN:HD22	1:E:169:TRP:HB2	1.82	0.44
2:B:106:ARG:HD2	5:B:330:HOH:O	2.17	0.44
2:F:47:THR:HG23	2:F:47:THR:O	2.17	0.44
1:G:168:HIS:C	1:G:170:GLY:H	2.21	0.44
1:G:167:GLU:HB3	4:G:311:NDG:C7	2.47	0.44
2:D:160:ARG:O	2:D:161:ASN:C	2.55	0.44
1:C:111:ASP:HA	1:C:147:HIS:CB	2.47	0.44
1:C:111:ASP:OD1	1:C:141:ASN:ND2	2.36	0.44
2:B:170:SER:N	5:B:328:HOH:O	2.51	0.44
1:G:104:ASN:OD1	1:G:105:THR:N	2.50	0.44
2:H:65:ARG:O	2:H:73:HIS:HA	2.18	0.44
1:E:97:PRO:HG3	5:F:334:HOH:O	2.17	0.44
1:E:111:ASP:HA	1:E:147:HIS:CB	2.47	0.44
2:B:140:ASN:HB2	2:B:190:MET:HE3	2.00	0.44
2:H:183:GLN:HG3	2:H:183:GLN:O	2.17	0.44
1:G:152:LEU:HD23	1:G:152:LEU:C	2.38	0.44
2:F:160:ARG:O	2:F:161:ASN:C	2.55	0.44
2:B:175:ILE:HB	2:B:183:GLN:O	2.18	0.44
1:G:135:GLU:HG2	1:G:148:LYS:HD3	1.99	0.44
2:D:189:GLU:HG2	2:F:173:GLN:NE2	2.33	0.44
1:A:125:ASN:CA	5:A:326:HOH:O	2.62	0.43
1:C:180:GLU:CG	1:C:181:PRO:HD2	2.48	0.43
2:F:132:ARG:HG2	2:F:139:HIS:HA	2.00	0.43
2:D:123:GLN:NE2	2:D:207:LEU:CD1	2.81	0.43
2:D:154:ILE:HG12	2:D:155:LYS:N	2.33	0.43
1:A:172:GLU:N	1:A:172:GLU:OE1	2.37	0.43
2:F:38:MET:HE2	2:F:40:GLU:OE2	2.18	0.43
1:E:76:LYS:C	1:E:78:SER:N	2.71	0.43
2:H:160:ARG:NH1	2:H:198:TYR:HE2	2.16	0.43
2:H:174:LEU:H	2:H:174:LEU:CD2	2.21	0.43
1:C:96:SER:CB	1:C:97:PRO:HD2	2.42	0.43

Continued on next page...

Continued from previous page...

Atom-1	Atom-2	Interatomic distance (Å)	Clash overlap (Å)
2:H:4:GLN:OE1	5:H:314:HOH:O	2.21	0.43
1:E:14:TYR:CE2	1:E:68:LYS:HG3	2.53	0.43
2:H:42:TYR:H	2:H:42:TYR:HD1	1.65	0.43
2:F:171:SER:CB	2:F:186:VAL:HG22	2.48	0.43
1:E:168:HIS:C	1:E:170:GLY:N	2.71	0.43
2:H:136:LEU:HA	2:H:140:ASN:ND2	2.29	0.43
2:H:124:PRO:HB3	2:H:149:PHE:HB3	1.99	0.43
1:G:56:ASP:CG	1:G:58:GLN:HE21	2.21	0.43
2:H:132:ARG:HG2	2:H:139:HIS:HA	2.00	0.43
2:B:128:ILE:HG13	2:B:215:TRP:HB2	2.00	0.43
2:B:158:TRP:C	5:B:334:HOH:O	2.56	0.43
1:E:14:TYR:CZ	1:E:19:ASP:HA	2.54	0.43
1:E:32:LEU:O	1:E:33:PHE:HB3	2.17	0.43
2:H:188:LEU:HD12	2:H:189:GLU:N	2.33	0.43
2:B:130:LEU:HD12	2:B:141:THR:O	2.19	0.43
2:B:174:LEU:N	2:B:174:LEU:HD23	2.22	0.43
1:E:46:LEU:HD23	1:E:49:PHE:CE1	2.53	0.43
2:H:65:ARG:HG2	2:H:66:TYR:H	1.82	0.43
2:D:55:ARG:HG2	2:D:62:GLU:OE2	2.18	0.43
1:G:119:ASN:HB2	1:G:167:GLU:HB2	1.99	0.43
1:C:14:TYR:CZ	1:C:19:ASP:HA	2.53	0.43
2:F:126:VAL:CG2	2:F:211:ILE:HD11	2.49	0.43
1:C:136:THR:O	1:C:148:LYS:NZ	2.44	0.43
1:A:48:GLU:HG2	1:A:49:PHE:H	1.83	0.43
1:C:32:LEU:HD23	2:D:180:TRP:HH2	1.75	0.43
2:B:206:SER:H	2:B:207:LEU:HD22	1.84	0.43
2:B:120:ARG:HG2	2:B:150:TYR:CD1	2.53	0.43
2:B:29:SER:O	2:B:30:GLU:HG3	2.18	0.43
2:D:7:LYS:HD3	5:D:307:HOH:O	2.19	0.43
1:C:76:LYS:C	1:C:78:SER:N	2.71	0.43
1:C:78:SER:CB	5:C:328:HOH:O	2.62	0.43
2:D:10:LYS:O	2:D:87:TRP:NE1	2.50	0.43
1:G:110:VAL:O	1:G:147:HIS:HB2	2.18	0.43
2:F:132:ARG:HB2	2:F:141:THR:CB	2.48	0.43
1:C:162:TYR:HD2	1:C:179:TRP:CZ3	2.37	0.43
2:F:121:LEU:HG	2:F:205:PRO:O	2.19	0.43
2:H:120:ARG:HH12	2:H:180:TRP:HB3	1.80	0.43
2:D:159:PHE:HD1	2:D:163:GLN:O	2.01	0.43
2:B:166:THR:O	2:B:169:VAL:CG1	2.67	0.43
1:E:79:ASN:HA	1:E:79:ASN:HD22	1.51	0.43
2:D:58:TYR:O	2:D:60:ARG:N	2.51	0.43

Continued on next page...

Continued from previous page...

Atom-1	Atom-2	Interatomic distance (Å)	Clash overlap (Å)
1:E:118:ILE:HD11	1:E:166:VAL:CG1	2.49	0.43
2:F:65:ARG:O	2:F:73:HIS:HA	2.19	0.43
2:B:139:HIS:C	2:B:140:ASN:CG	2.77	0.43
2:H:57:ILE:HG13	2:H:62:GLU:CA	2.47	0.43
2:H:174:LEU:N	2:H:174:LEU:HD23	2.22	0.43
2:B:128:ILE:HD11	2:B:215:TRP:HD1	1.84	0.43
1:G:48:GLU:HG2	1:G:49:PHE:N	2.34	0.43
1:A:130:ALA:O	1:A:131:ASP:CB	2.66	0.43
2:B:57:ILE:HG13	2:B:62:GLU:HA	2.01	0.43
1:C:15:GLN:NE2	1:C:116:PRO:HD2	2.34	0.43
1:G:14:TYR:OH	1:G:68:LYS:HD3	2.19	0.43
2:F:149:PHE:HE1	2:F:183:GLN:HA	1.84	0.43
2:F:58:TYR:O	2:F:60:ARG:N	2.52	0.43
2:D:157:ARG:HD3	2:D:164:GLU:OE1	2.19	0.43
1:C:58:GLN:NE2	1:C:59:GLY:N	2.66	0.43
2:H:58:TYR:O	2:H:59:ASN:HB2	2.19	0.43
1:E:134:TYR:CG	1:E:135:GLU:N	2.86	0.43
2:F:42:TYR:H	2:F:42:TYR:HD1	1.65	0.42
1:A:11:ILE:HA	2:B:37:PHE:O	2.19	0.42
1:C:136:THR:HG23	1:C:149:LEU:HB2	2.01	0.42
2:D:43:PHE:CD2	2:D:109:TYR:CD2	3.07	0.42
3:A:301:NAG:C7	3:A:301:NAG:HO3	2.32	0.42
2:F:62:GLU:CG	5:F:319:HOH:O	2.66	0.42
2:F:64:VAL:HG12	2:F:65:ARG:N	2.34	0.42
2:H:123:GLN:CA	2:H:206:SER:OG	2.68	0.42
2:D:54:THR:OG1	2:D:66:TYR:HB3	2.19	0.42
2:F:183:GLN:O	2:F:183:GLN:HG3	2.19	0.42
2:D:169:VAL:O	2:D:169:VAL:HG23	2.17	0.42
1:G:171:LEU:HD12	1:G:171:LEU:O	2.19	0.42
1:E:124:ARG:HG2	1:E:125:ASN:HD22	1.84	0.42
2:F:57:ILE:HG13	2:F:62:GLU:CA	2.49	0.42
1:G:74:LEU:HD21	2:H:63:TYR:CZ	2.54	0.42
2:H:150:TYR:CD1	2:H:151:PRO:HA	2.54	0.42
2:H:179:ASP:O	2:H:180:TRP:HB2	2.19	0.42
1:G:77:ARG:NH1	2:H:83:ASP:OD2	2.52	0.42
1:G:124:ARG:HG2	1:G:125:ASN:ND2	2.28	0.42
1:G:79:ASN:HB2	2:H:18:SER:CA	2.37	0.42
2:H:123:GLN:N	2:H:206:SER:OG	2.51	0.42
2:B:160:ARG:O	2:B:161:ASN:C	2.58	0.42
2:B:42:TYR:HD1	2:B:42:TYR:H	1.63	0.42
2:H:58:TYR:O	2:H:60:ARG:N	2.52	0.42

Continued on next page...

Continued from previous page...

Atom-1	Atom-2	Interatomic distance (Å)	Clash overlap (Å)
1:E:130:ALA:O	1:E:131:ASP:CB	2.68	0.42
1:E:168:HIS:C	1:E:170:GLY:H	2.21	0.42
1:G:124:ARG:C	1:G:125:ASN:HD22	2.23	0.42
2:F:154:ILE:CG1	2:F:155:LYS:N	2.82	0.42
2:F:58:TYR:O	2:F:59:ASN:HB2	2.20	0.42
1:E:82:PRO:HA	2:F:33:PHE:CE1	2.54	0.42
1:C:7:GLY:HA2	1:C:27:PHE:HD1	1.84	0.42
1:G:168:HIS:C	1:G:170:GLY:N	2.72	0.42
2:F:62:GLU:CD	5:F:319:HOH:O	2.58	0.42
1:A:77:ARG:HG2	1:A:77:ARG:O	2.20	0.42
2:H:150:TYR:CD2	2:H:180:TRP:O	2.73	0.42
2:D:204:HIS:O	2:D:206:SER:N	2.53	0.42
1:A:168:HIS:O	1:A:171:LEU:HD12	2.18	0.42
1:C:31:GLU:OE1	1:C:137:SER:HB2	2.18	0.42
1:C:168:HIS:C	1:C:170:GLY:H	2.22	0.42
1:G:76:LYS:C	1:G:78:SER:N	2.73	0.42
1:G:162:TYR:O	1:G:178:HIS:CD2	2.73	0.42
2:B:149:PHE:CE1	2:B:183:GLN:CA	3.02	0.42
1:G:139:PHE:CB	1:G:147:HIS:CE1	3.02	0.42
1:A:32:LEU:O	1:A:33:PHE:HB3	2.20	0.42
1:E:4:ASP:HB3	5:E:310:HOH:O	2.18	0.42
1:E:71:LEU:HD13	2:F:35:TYR:HB2	2.00	0.42
2:H:149:PHE:CE1	2:H:183:GLN:HA	2.54	0.42
2:H:126:VAL:CG1	2:H:202:VAL:HG21	2.50	0.42
1:C:45:MET:HE2	2:D:179:ASP:HA	2.01	0.42
2:D:104:VAL:HG21	5:D:312:HOH:O	2.20	0.42
2:H:106:ARG:HG2	2:H:110:GLU:CD	2.39	0.42
2:F:124:PRO:HB3	2:F:149:PHE:HB3	2.02	0.42
2:F:119:ARG:NH1	2:F:119:ARG:HB3	2.34	0.42
2:H:58:TYR:CE2	2:H:59:ASN:ND2	2.88	0.42
2:F:72:GLU:HB2	2:F:88:ASN:OD1	2.20	0.42
1:G:85:ASN:ND2	1:G:169:TRP:CB	2.82	0.42
1:E:109:PHE:HD1	1:E:149:LEU:CD1	2.27	0.42
1:C:152:LEU:C	1:C:152:LEU:CD2	2.88	0.42
1:E:53:ALA:HA	2:F:1:PHE:O	2.18	0.42
2:F:132:ARG:HB2	2:F:141:THR:HB	2.02	0.42
2:H:132:ARG:HB2	2:H:141:THR:HB	2.02	0.42
1:E:25:PHE:CD1	1:E:33:PHE:CZ	3.08	0.42
1:G:141:ASN:ND2	1:G:146:PHE:C	2.74	0.42
1:A:74:LEU:HD21	2:B:63:TYR:CE2	2.54	0.42
2:H:160:ARG:O	2:H:161:ASN:C	2.57	0.42

Continued on next page...

Continued from previous page...

Atom-1	Atom-2	Interatomic distance (Å)	Clash overlap (Å)
1:G:110:VAL:CB	1:G:113:ILE:HD11	2.48	0.42
2:H:80:GLY:C	2:H:82:PRO:HD2	2.39	0.42
1:A:76:LYS:C	1:A:78:SER:N	2.72	0.41
1:C:106:LEU:HD23	1:C:122:TRP:CZ3	2.55	0.41
2:D:12:VAL:HG11	2:D:86:TYR:HB2	2.02	0.41
1:A:15:GLN:OE1	1:A:116:PRO:HG2	2.20	0.41
2:B:119:ARG:HB2	2:B:119:ARG:HH11	1.85	0.41
1:C:130:ALA:C	1:C:131:ASP:CG	2.78	0.41
2:B:189:GLU:HA	2:B:189:GLU:OE2	2.20	0.41
1:A:168:HIS:C	1:A:170:GLY:H	2.24	0.41
2:F:126:VAL:HG11	2:F:211:ILE:HD11	2.00	0.41
2:B:165:GLU:CB	5:B:334:HOH:O	2.63	0.41
5:A:312:HOH:O	2:B:176:ARG:CG	2.63	0.41
2:F:158:TRP:CD1	2:F:188:LEU:HB2	2.55	0.41
2:B:20:VAL:HG13	2:B:21:PRO:CD	2.46	0.41
2:F:160:ARG:NH1	2:F:198:TYR:OH	2.53	0.41
2:B:120:ARG:NH1	2:B:180:TRP:O	2.36	0.41
2:D:138:HIS:HE1	5:D:328:HOH:O	2.03	0.41
1:C:130:ALA:O	1:C:131:ASP:CB	2.68	0.41
2:B:58:TYR:O	2:B:59:ASN:HB2	2.20	0.41
2:D:109:TYR:HA	2:D:113:GLU:CB	2.51	0.41
1:E:113:ILE:HG23	1:E:168:HIS:CE1	2.56	0.41
2:F:55:ARG:HD3	2:F:62:GLU:OE2	2.21	0.41
2:B:65:ARG:O	2:B:73:HIS:HA	2.21	0.41
2:F:160:ARG:NH2	2:F:196:GLU:OE2	2.53	0.41
2:B:174:LEU:HG	2:B:175:ILE:H	1.86	0.41
1:A:135:GLU:CD	1:A:148:LYS:HD3	2.41	0.41
2:D:124:PRO:HB2	2:D:146:VAL:HG12	2.02	0.41
2:F:153:LYS:CG	5:F:332:HOH:O	2.66	0.41
1:E:79:ASN:OD1	3:E:307:NAG:H61	2.20	0.41
1:C:56:ASP:OD2	1:C:58:GLN:CG	2.68	0.41
2:D:78:GLU:C	2:D:80:GLY:H	2.23	0.41
1:C:162:TYR:HD2	1:C:179:TRP:HZ3	1.67	0.41
1:E:159:ASP:CG	1:E:160:ASP:N	2.74	0.41
2:H:10:LYS:O	2:H:87:TRP:NE1	2.49	0.41
2:B:76:VAL:HG22	2:B:77:THR:HG23	2.01	0.41
1:A:168:HIS:C	1:A:170:GLY:N	2.74	0.41
1:E:149:LEU:CD2	1:E:149:LEU:N	2.83	0.41
1:G:135:GLU:CG	1:G:148:LYS:HD3	2.50	0.41
2:D:111:GLY:O	2:D:115:HIS:CD2	2.68	0.41
2:D:119:ARG:CB	2:D:119:ARG:HH11	2.33	0.41

Continued on next page...

Continued from previous page...

Atom-1	Atom-2	Interatomic distance (Å)	Clash overlap (Å)
1:E:143:ASP:HB2	2:F:60:ARG:NH2	2.36	0.41
2:B:172:THR:HG23	2:B:185:LEU:HB2	2.02	0.41
1:A:65:ALA:HA	1:A:68:LYS:HZ3	1.85	0.41
1:A:19:ASP:OD2	1:A:19:ASP:O	2.39	0.41
2:D:216:LYS:O	2:D:217:ALA:OXT	2.39	0.41
1:E:51:GLN:HA	1:E:51:GLN:OE1	2.20	0.41
1:A:124:ARG:HG2	1:A:125:ASN:ND2	2.35	0.41
1:A:123:LEU:O	1:A:162:TYR:HA	2.20	0.41
1:A:74:LEU:HD21	2:B:63:TYR:CZ	2.56	0.41
2:B:87:TRP:HA	2:B:93:ILE:HG21	2.03	0.41
2:B:199:THR:HG22	2:B:214:GLU:HA	2.03	0.41
1:A:3:ALA:O	1:A:4:ASP:O	2.39	0.41
1:C:71:LEU:O	1:C:72:GLY:C	2.59	0.41
1:E:152:LEU:C	1:E:152:LEU:CD2	2.88	0.41
2:D:65:ARG:O	2:D:73:HIS:HA	2.20	0.41
2:F:106:ARG:HG2	2:F:110:GLU:CD	2.40	0.41
1:G:22:GLN:HG2	1:G:24:THR:HG23	2.03	0.41
2:H:128:ILE:HD13	2:H:128:ILE:H	1.86	0.41
2:D:172:THR:CG2	2:D:185:LEU:HB2	2.50	0.41
2:D:204:HIS:ND1	2:D:205:PRO:CA	2.83	0.41
1:G:160:ASP:OD2	1:G:160:ASP:C	2.57	0.41
1:G:8:THR:HB	1:G:26:GLU:HB2	2.02	0.41
2:F:38:MET:HE1	2:F:40:GLU:OE2	2.20	0.41
1:A:124:ARG:HE	1:A:162:TYR:HE1	1.69	0.41
2:F:65:ARG:HG2	2:F:66:TYR:H	1.86	0.41
1:A:71:LEU:O	1:A:72:GLY:C	2.59	0.41
2:D:139:HIS:C	2:D:140:ASN:CG	2.80	0.41
1:C:168:HIS:C	1:C:170:GLY:N	2.73	0.41
2:H:174:LEU:O	2:H:175:ILE:HB	2.21	0.41
2:H:176:ARG:NH1	2:H:182:PHE:CZ	2.89	0.41
1:G:77:ARG:N	2:H:16:GLY:HA2	2.36	0.41
2:F:197:VAL:CG1	5:F:314:HOH:O	2.55	0.41
1:A:96:SER:HB2	1:A:97:PRO:CD	2.44	0.41
1:A:8:THR:HG22	1:A:11:ILE:CD1	2.43	0.41
1:G:56:ASP:HA	1:G:57:PRO:HD3	1.86	0.41
2:B:180:TRP:C	5:B:333:HOH:O	2.59	0.41
1:A:113:ILE:HG12	1:A:118:ILE:HD12	2.03	0.41
2:F:106:ARG:CG	2:F:110:GLU:OE1	2.66	0.41
3:E:308:NAG:H83	5:E:313:HOH:O	2.21	0.41
2:H:96:ARG:NH2	5:H:340:HOH:O	2.42	0.41
5:D:321:HOH:O	1:E:1:ILE:CG2	2.69	0.41

Continued on next page...

Continued from previous page...

Atom-1	Atom-2	Interatomic distance (Å)	Clash overlap (Å)
2:D:38:MET:O	2:D:38:MET:CG	2.68	0.41
1:C:10:GLY:HA2	1:C:23:TYR:OH	2.20	0.41
1:E:71:LEU:O	1:E:72:GLY:C	2.60	0.41
1:C:169:TRP:CD1	3:C:305:NAG:C8	3.04	0.41
2:H:204:HIS:CB	2:H:205:PRO:CD	2.97	0.41
2:B:204:HIS:O	2:B:205:PRO:C	2.59	0.41
1:G:139:PHE:HB2	1:G:147:HIS:CE1	2.56	0.41
1:E:122:TRP:O	1:E:123:LEU:HD23	2.21	0.41
1:G:56:ASP:OD2	1:G:58:GLN:CG	2.70	0.41
1:A:48:GLU:HG2	1:A:49:PHE:N	2.35	0.41
1:E:64:ILE:HD13	1:E:64:ILE:HA	1.87	0.41
1:A:79:ASN:HB2	2:B:18:SER:CA	2.31	0.40
2:F:204:HIS:O	2:F:206:SER:N	2.55	0.40
1:C:169:TRP:N	5:C:332:HOH:O	2.53	0.40
2:H:204:HIS:O	2:H:206:SER:N	2.54	0.40
1:A:110:VAL:CG1	1:A:113:ILE:HD11	2.50	0.40
1:E:68:LYS:HZ3	1:E:68:LYS:HB2	1.86	0.40
2:B:189:GLU:CA	2:B:189:GLU:OE2	2.69	0.40
2:F:9:ASN:HA	5:F:350:HOH:O	2.21	0.40
1:E:124:ARG:O	1:E:125:ASN:HB2	2.22	0.40
2:H:98:ARG:HH11	2:H:98:ARG:HG2	1.86	0.40
2:H:160:ARG:CZ	2:H:196:GLU:OE2	2.69	0.40
1:G:123:LEU:O	1:G:162:TYR:HA	2.21	0.40
1:E:65:ALA:HA	1:E:68:LYS:NZ	2.36	0.40
1:E:102:GLN:NE2	1:E:103:PRO:HD2	2.36	0.40
1:A:122:TRP:O	1:A:123:LEU:HD23	2.21	0.40
2:D:63:TYR:CE2	2:D:64:VAL:CG2	3.03	0.40
2:H:123:GLN:HA	2:H:206:SER:OG	2.21	0.40
1:A:168:HIS:HD2	1:A:170:GLY:H	1.68	0.40
1:C:14:TYR:HA	1:C:20:ILE:O	2.22	0.40
2:H:165:GLU:OE1	2:H:165:GLU:CA	2.70	0.40
1:C:92:VAL:HG12	1:C:93:PHE:N	2.37	0.40
1:E:22:GLN:HG2	1:E:24:THR:HG23	2.04	0.40
1:E:6:VAL:HG13	1:E:6:VAL:O	2.21	0.40
2:F:52:TYR:CZ	2:F:54:THR:HG23	2.56	0.40
2:B:52:TYR:CE2	2:B:100:GLU:HB2	2.55	0.40
2:B:57:ILE:N	2:B:57:ILE:HD12	2.37	0.40
2:H:12:VAL:HG11	2:H:86:TYR:HB2	2.04	0.40
1:A:139:PHE:HB2	1:A:147:HIS:NE2	2.37	0.40
1:G:40:LYS:HE2	1:G:40:LYS:HB3	1.93	0.40
2:D:126:VAL:HG23	2:D:213:VAL:CG2	2.47	0.40

Continued on next page...

Continued from previous page...

Atom-1	Atom-2	Interatomic distance (Å)	Clash overlap (Å)
1:G:46:LEU:HA	1:G:46:LEU:HD12	1.70	0.40
2:B:106:ARG:O	2:B:110:GLU:HG3	2.21	0.40
1:A:46:LEU:HD12	1:A:46:LEU:HA	1.89	0.40
1:G:106:LEU:HA	1:G:106:LEU:HD12	1.94	0.40
1:G:131:ASP:H	1:G:133:VAL:HG23	1.86	0.40
2:B:209:SER:HA	2:B:210:PRO:HD3	1.93	0.40
2:D:170:SER:OG	2:F:170:SER:HB3	2.21	0.40
1:E:180:GLU:HG2	1:E:182:GLU:H	1.87	0.40
2:D:174:LEU:CD2	2:D:174:LEU:H	2.28	0.40
2:D:20:VAL:CG1	2:D:21:PRO:HD2	2.48	0.40
2:B:109:TYR:OH	2:B:118:LEU:HD21	2.21	0.40
2:D:193:ARG:O	2:D:196:GLU:HG3	2.21	0.40
2:D:158:TRP:CD2	2:D:188:LEU:HD22	2.56	0.40

All (1) symmetry-related close contacts are listed below. The label for Atom-2 includes the symmetry operator and encoded unit-cell translations to be applied.

Atom-1	Atom-2	Interatomic distance (Å)	Clash overlap (Å)
2:B:166:THR:O	2:H:171:SER:OG[2_645]	2.17	0.03

5.3 Torsion angles [i](#)

5.3.1 Protein backbone [i](#)

In the following table, the Percentiles column shows the percent Ramachandran outliers of the chain as a percentile score with respect to all X-ray entries followed by that with respect to entries of similar resolution.

The Analysed column shows the number of residues for which the backbone conformation was analysed, and the total number of residues.

Mol	Chain	Analysed	Favoured	Allowed	Outliers	Percentiles	
1	A	180/182 (99%)	149 (83%)	22 (12%)	9 (5%)	3	3
1	C	180/182 (99%)	148 (82%)	23 (13%)	9 (5%)	3	3
1	E	180/182 (99%)	148 (82%)	22 (12%)	10 (6%)	2	2
1	G	180/182 (99%)	147 (82%)	24 (13%)	9 (5%)	3	3
2	B	215/217 (99%)	173 (80%)	31 (14%)	11 (5%)	2	2
2	D	215/217 (99%)	172 (80%)	31 (14%)	12 (6%)	2	2

Continued on next page...

Continued from previous page...

Mol	Chain	Analysed	Favoured	Allowed	Outliers	Percentiles	
2	F	215/217 (99%)	174 (81%)	30 (14%)	11 (5%)	2	2
2	H	215/217 (99%)	171 (80%)	33 (15%)	11 (5%)	2	2
All	All	1580/1596 (99%)	1282 (81%)	216 (14%)	82 (5%)	2	2

All (82) Ramachandran outliers are listed below:

Mol	Chain	Res	Type
1	A	4	ASP
1	A	131	ASP
2	B	13	ASP
2	B	138	HIS
2	B	161	ASN
2	B	204	HIS
1	C	4	ASP
1	C	77	ARG
1	C	131	ASP
2	D	13	ASP
2	D	138	HIS
2	D	161	ASN
2	D	204	HIS
2	D	205	PRO
1	E	4	ASP
1	E	77	ARG
1	E	131	ASP
2	F	13	ASP
2	F	138	HIS
2	F	161	ASN
2	F	204	HIS
1	G	4	ASP
1	G	131	ASP
2	H	13	ASP
2	H	138	HIS
2	H	161	ASN
2	H	204	HIS
2	H	205	PRO
1	A	2	GLU
1	A	77	ARG
1	A	128	SER
2	B	137	ASN
2	B	205	PRO
1	C	2	GLU

Continued on next page...

Continued from previous page...

Mol	Chain	Res	Type
1	C	128	SER
1	C	158	ASP
2	D	137	ASN
1	E	2	GLU
1	E	128	SER
1	E	158	ASP
2	F	137	ASN
2	F	205	PRO
1	G	2	GLU
1	G	77	ARG
1	G	128	SER
1	G	158	ASP
2	H	137	ASN
1	A	158	ASP
1	A	100	LEU
2	B	24	SER
2	B	105	CYS
1	C	100	LEU
2	D	24	SER
2	D	105	CYS
2	F	24	SER
2	F	105	CYS
1	G	100	LEU
2	H	24	SER
2	H	105	CYS
1	C	76	LYS
1	E	100	LEU
2	F	136	LEU
2	H	136	LEU
1	C	174	PRO
2	D	59	ASN
2	D	136	LEU
1	E	76	LYS
2	F	28	GLY
1	G	174	PRO
1	A	174	PRO
2	B	28	GLY
2	B	175	ILE
2	D	28	GLY
2	D	175	ILE
1	E	174	PRO
2	F	175	ILE

Continued on next page...

Continued from previous page...

Mol	Chain	Res	Type
1	G	73	VAL
2	H	28	GLY
2	H	175	ILE
1	A	73	VAL
2	B	112	PRO
1	E	73	VAL

5.3.2 Protein sidechains ⓘ

In the following table, the Percentiles column shows the percent sidechain outliers of the chain as a percentile score with respect to all X-ray entries followed by that with respect to entries of similar resolution.

The Analysed column shows the number of residues for which the sidechain conformation was analysed, and the total number of residues.

Mol	Chain	Analysed	Rotameric	Outliers	Percentiles	
1	A	163/163 (100%)	154 (94%)	9 (6%)	27	48
1	C	163/163 (100%)	153 (94%)	10 (6%)	23	42
1	E	163/163 (100%)	152 (93%)	11 (7%)	20	37
1	G	163/163 (100%)	153 (94%)	10 (6%)	23	42
2	B	189/189 (100%)	176 (93%)	13 (7%)	19	35
2	D	189/189 (100%)	171 (90%)	18 (10%)	11	20
2	F	189/189 (100%)	172 (91%)	17 (9%)	12	22
2	H	189/189 (100%)	175 (93%)	14 (7%)	17	31
All	All	1408/1408 (100%)	1306 (93%)	102 (7%)	18	33

All (102) residues with a non-rotameric sidechain are listed below:

Mol	Chain	Res	Type
1	A	1	ILE
1	A	46	LEU
1	A	63	ASN
1	A	99	LEU
1	A	131	ASP
1	A	154	PHE
1	A	163	ASP
1	A	171	LEU
1	A	172	GLU

Continued on next page...

Continued from previous page...

Mol	Chain	Res	Type
2	B	31	ARG
2	B	76	VAL
2	B	83	ASP
2	B	113	GLU
2	B	128	ILE
2	B	140	ASN
2	B	142	LEU
2	B	163	GLN
2	B	174	LEU
2	B	189	GLU
2	B	190	MET
2	B	206	SER
2	B	207	LEU
1	C	1	ILE
1	C	39	LYS
1	C	46	LEU
1	C	126	SER
1	C	129	VAL
1	C	131	ASP
1	C	154	PHE
1	C	163	ASP
1	C	171	LEU
1	C	172	GLU
2	D	22	ARG
2	D	31	ARG
2	D	76	VAL
2	D	79	LEU
2	D	82	PRO
2	D	83	ASP
2	D	113	GLU
2	D	120	ARG
2	D	128	ILE
2	D	140	ASN
2	D	142	LEU
2	D	163	GLN
2	D	174	LEU
2	D	190	MET
2	D	205	PRO
2	D	206	SER
2	D	207	LEU
2	D	211	ILE
1	E	1	ILE

Continued on next page...

Continued from previous page...

Mol	Chain	Res	Type
1	E	8	THR
1	E	57	PRO
1	E	79	ASN
1	E	99	LEU
1	E	129	VAL
1	E	131	ASP
1	E	154	PHE
1	E	163	ASP
1	E	171	LEU
1	E	172	GLU
2	F	31	ARG
2	F	42	TYR
2	F	56	TYR
2	F	68	SER
2	F	76	VAL
2	F	83	ASP
2	F	94	LEU
2	F	113	GLU
2	F	128	ILE
2	F	140	ASN
2	F	163	GLN
2	F	174	LEU
2	F	189	GLU
2	F	190	MET
2	F	206	SER
2	F	207	LEU
2	F	211	ILE
1	G	1	ILE
1	G	39	LYS
1	G	46	LEU
1	G	99	LEU
1	G	129	VAL
1	G	131	ASP
1	G	163	ASP
1	G	171	LEU
1	G	172	GLU
1	G	174	PRO
2	H	31	ARG
2	H	76	VAL
2	H	79	LEU
2	H	83	ASP
2	H	94	LEU

Continued on next page...

Continued from previous page...

Mol	Chain	Res	Type
2	H	113	GLU
2	H	128	ILE
2	H	140	ASN
2	H	163	GLN
2	H	174	LEU
2	H	190	MET
2	H	205	PRO
2	H	206	SER
2	H	207	LEU

Some sidechains can be flipped to improve hydrogen bonding and reduce clashes. All (64) such sidechains are listed below:

Mol	Chain	Res	Type
1	A	15	GLN
1	A	85	ASN
1	A	89	GLN
1	A	168	HIS
1	A	178	HIS
2	B	36	GLN
2	B	73	HIS
2	B	115	HIS
2	B	123	GLN
2	B	125	ASN
2	B	140	ASN
2	B	161	ASN
2	B	163	GLN
1	C	15	GLN
1	C	22	GLN
1	C	58	GLN
1	C	89	GLN
1	C	102	GLN
1	C	168	HIS
2	D	36	GLN
2	D	73	HIS
2	D	115	HIS
2	D	123	GLN
2	D	125	ASN
2	D	138	HIS
2	D	139	HIS
2	D	140	ASN
2	D	161	ASN
2	D	163	GLN

Continued on next page...

Continued from previous page...

Mol	Chain	Res	Type
1	E	15	GLN
1	E	58	GLN
1	E	62	GLN
1	E	89	GLN
1	E	102	GLN
1	E	141	ASN
1	E	168	HIS
1	E	178	HIS
2	F	36	GLN
2	F	73	HIS
2	F	107	HIS
2	F	115	HIS
2	F	123	GLN
2	F	138	HIS
2	F	139	HIS
2	F	140	ASN
2	F	163	GLN
2	F	173	GLN
1	G	15	GLN
1	G	58	GLN
1	G	62	GLN
1	G	85	ASN
1	G	89	GLN
1	G	102	GLN
1	G	168	HIS
1	G	178	HIS
2	H	36	GLN
2	H	73	HIS
2	H	115	HIS
2	H	125	ASN
2	H	140	ASN
2	H	161	ASN
2	H	163	GLN
2	H	201	HIS
2	H	204	HIS

5.3.3 RNA ⓘ

There are no RNA molecules in this entry.

5.4 Non-standard residues in protein, DNA, RNA chains [i](#)

There are no non-standard protein/DNA/RNA residues in this entry.

5.5 Carbohydrates [i](#)

There are no carbohydrates in this entry.

5.6 Ligand geometry [i](#)

12 ligands are modelled in this entry.

In the following table, the Counts columns list the number of bonds (or angles) for which Mogul statistics could be retrieved, the number of bonds (or angles) that are observed in the model and the number of bonds (or angles) that are defined in the chemical component dictionary. The Link column lists molecule types, if any, to which the group is linked. The Z score for a bond length (or angle) is the number of standard deviations the observed value is removed from the expected value. A bond length (or angle) with $|Z| > 2$ is considered an outlier worth inspection. RMSZ is the root-mean-square of all Z scores of the bond lengths (or angles).

Mol	Type	Chain	Res	Link	Bond lengths			Bond angles		
					Counts	RMSZ	$\# Z > 2$	Counts	RMSZ	$\# Z > 2$
3	NAG	A	301	1	14,14,15	0.83	0	15,19,21	1.26	1 (6%)
3	NAG	A	302	1	14,14,15	0.50	0	15,19,21	0.76	0
3	NAG	B	303	2	14,14,15	0.58	0	15,19,21	0.54	0
3	NAG	C	304	1	14,14,15	0.89	0	15,19,21	0.89	1 (6%)
3	NAG	C	305	1	14,14,15	0.67	1 (7%)	15,19,21	0.80	0
3	NAG	D	306	2	14,14,15	0.66	0	15,19,21	0.82	1 (6%)
3	NAG	E	307	1	14,14,15	0.61	0	15,19,21	1.20	1 (6%)
3	NAG	E	308	1	14,14,15	0.93	1 (7%)	15,19,21	1.28	2 (13%)
3	NAG	F	309	2	14,14,15	0.70	0	15,19,21	1.28	2 (13%)
3	NAG	G	310	1	14,14,15	0.97	1 (7%)	15,19,21	1.59	1 (6%)
4	NDG	G	311	1	14,14,15	0.71	0	15,19,21	0.61	0
3	NAG	H	312	2	14,14,15	0.75	0	15,19,21	0.63	0

In the following table, the Chirals column lists the number of chiral outliers, the number of chiral centers analysed, the number of these observed in the model and the number defined in the chemical component dictionary. Similar counts are reported in the Torsion and Rings columns. '-' means no outliers of that kind were identified.

Mol	Type	Chain	Res	Link	Chirals	Torsions	Rings
3	NAG	A	301	1	-	0/6/23/26	0/1/1/1

Continued on next page...

Continued from previous page...

Mol	Type	Chain	Res	Link	Chirals	Torsions	Rings
3	NAG	A	302	1	-	0/6/23/26	0/1/1/1
3	NAG	B	303	2	-	0/6/23/26	0/1/1/1
3	NAG	C	304	1	-	0/6/23/26	0/1/1/1
3	NAG	C	305	1	-	0/6/23/26	0/1/1/1
3	NAG	D	306	2	-	2/6/23/26	0/1/1/1
3	NAG	E	307	1	-	1/6/23/26	0/1/1/1
3	NAG	E	308	1	-	0/6/23/26	0/1/1/1
3	NAG	F	309	2	-	0/6/23/26	0/1/1/1
3	NAG	G	310	1	-	0/6/23/26	0/1/1/1
4	NDG	G	311	1	-	0/6/23/26	0/1/1/1
3	NAG	H	312	2	-	0/6/23/26	0/1/1/1

All (3) bond length outliers are listed below:

Mol	Chain	Res	Type	Atoms	Z	Observed(Å)	Ideal(Å)
3	G	310	NAG	O5-C5	2.07	1.48	1.43
3	C	305	NAG	C1-C2	2.09	1.55	1.52
3	E	308	NAG	C1-C2	2.21	1.55	1.52

All (9) bond angle outliers are listed below:

Mol	Chain	Res	Type	Atoms	Z	Observed(°)	Ideal(°)
3	A	301	NAG	C2-N2-C7	-3.68	118.31	123.04
3	F	309	NAG	C2-N2-C7	-3.27	118.84	123.04
3	E	308	NAG	C4-C3-C2	-2.85	106.80	111.23
3	D	306	NAG	C2-N2-C7	-2.34	120.04	123.04
3	C	304	NAG	C2-N2-C7	-2.26	120.14	123.04
3	E	308	NAG	C1-O5-C5	2.14	114.97	112.25
3	F	309	NAG	C1-O5-C5	2.61	115.56	112.25
3	E	307	NAG	C1-O5-C5	3.51	116.70	112.25
3	G	310	NAG	C1-O5-C5	5.11	118.73	112.25

There are no chirality outliers.

All (3) torsion outliers are listed below:

Mol	Chain	Res	Type	Atoms
3	D	306	NAG	C8-C7-N2-C2
3	E	307	NAG	O7-C7-N2-C2
3	D	306	NAG	O7-C7-N2-C2

There are no ring outliers.

12 monomers are involved in 34 short contacts:

Mol	Chain	Res	Type	Clashes	Symm-Clashes
3	A	301	NAG	5	0
3	A	302	NAG	3	0
3	B	303	NAG	1	0
3	C	304	NAG	1	0
3	C	305	NAG	4	0
3	D	306	NAG	2	0
3	E	307	NAG	2	0
3	E	308	NAG	2	0
3	F	309	NAG	3	0
3	G	310	NAG	7	0
4	G	311	NDG	3	0
3	H	312	NAG	1	0

5.7 Other polymers [i](#)

There are no such residues in this entry.

5.8 Polymer linkage issues [i](#)

There are no chain breaks in this entry.

6 Fit of model and data ⓘ

6.1 Protein, DNA and RNA chains ⓘ

In the following table, the column labelled ‘#RSRZ> 2’ contains the number (and percentage) of RSRZ outliers, followed by percent RSRZ outliers for the chain as percentile scores relative to all X-ray entries and entries of similar resolution. The OWAB column contains the minimum, median, 95th percentile and maximum values of the occupancy-weighted average B-factor per residue. The column labelled ‘Q< 0.9’ lists the number of (and percentage) of residues with an average occupancy less than 0.9.

Mol	Chain	Analysed	<RSRZ>	#RSRZ>2	OWAB(Å ²)	Q<0.9
1	A	182/182 (100%)	-0.05	1 (0%) 91 92	3, 10, 32, 39	0
1	C	182/182 (100%)	-0.04	0 100 100	3, 10, 31, 41	0
1	E	182/182 (100%)	0.14	1 (0%) 91 92	3, 16, 32, 38	0
1	G	182/182 (100%)	0.12	6 (3%) 50 55	5, 15, 32, 41	0
2	B	217/217 (100%)	0.34	14 (6%) 22 25	4, 12, 71, 92	0
2	D	217/217 (100%)	0.50	22 (10%) 9 9	4, 12, 71, 93	0
2	F	217/217 (100%)	0.43	21 (9%) 10 10	5, 16, 72, 93	0
2	H	217/217 (100%)	0.50	22 (10%) 9 9	6, 17, 71, 93	0
All	All	1596/1596 (100%)	0.26	87 (5%) 29 32	3, 14, 50, 93	0

All (87) RSRZ outliers are listed below:

Mol	Chain	Res	Type	RSRZ
2	D	24	SER	10.1
2	B	133	THR	8.1
2	D	25	GLY	8.1
2	D	20	VAL	7.9
2	D	23	GLY	7.8
2	B	138	HIS	7.7
2	D	132	ARG	7.1
2	F	27	GLY	7.0
2	D	21	PRO	6.9
2	B	29	SER	6.5
2	H	25	GLY	6.1
2	D	133	THR	5.8
2	D	135	ALA	5.8
2	F	133	THR	5.8
2	F	20	VAL	5.7
2	D	138	HIS	5.5

Continued on next page...

Continued from previous page...

Mol	Chain	Res	Type	RSRZ
2	H	28	GLY	5.1
2	F	132	ARG	5.1
2	H	133	THR	4.9
2	D	137	ASN	4.9
2	D	26	GLY	4.9
2	H	135	ALA	4.8
2	B	26	GLY	4.7
2	H	23	GLY	4.7
2	H	26	GLY	4.7
2	F	135	ALA	4.7
2	B	21	PRO	4.5
2	B	134	GLU	4.4
2	B	14	GLY	4.3
2	F	28	GLY	4.3
2	H	21	PRO	4.3
2	D	27	GLY	4.2
2	H	138	HIS	4.2
2	D	139	HIS	4.2
2	D	131	SER	3.9
1	G	158	ASP	3.9
2	F	26	GLY	3.8
2	F	19	LEU	3.8
2	H	132	ARG	3.7
2	F	21	PRO	3.6
2	H	134	GLU	3.6
2	F	138	HIS	3.5
2	D	134	GLU	3.4
2	H	16	GLY	3.4
2	F	25	GLY	3.4
1	G	117	VAL	3.4
1	E	16	SER	3.4
2	B	23	GLY	3.3
2	D	130	LEU	3.2
2	H	14	GLY	3.2
2	D	22	ARG	3.1
2	F	23	GLY	3.1
2	B	27	GLY	3.0
2	F	15	GLY	3.0
2	H	15	GLY	3.0
2	H	131	SER	3.0
1	G	71	LEU	2.9
2	H	29	SER	2.9

Continued on next page...

Continued from previous page...

Mol	Chain	Res	Type	RSRZ
2	H	136	LEU	2.8
2	F	139	HIS	2.7
2	B	132	ARG	2.7
2	H	24	SER	2.7
2	F	131	SER	2.7
2	F	29	SER	2.6
1	G	173	GLU	2.5
2	H	141	THR	2.5
2	F	136	LEU	2.5
1	G	159	ASP	2.4
2	H	19	LEU	2.4
2	D	29	SER	2.4
2	D	14	GLY	2.4
2	F	134	GLU	2.3
2	H	137	ASN	2.3
2	H	194	ARG	2.3
2	F	217	ALA	2.3
2	B	25	GLY	2.2
2	F	137	ASN	2.2
2	H	197	VAL	2.1
2	B	131	SER	2.1
2	B	136	LEU	2.1
2	F	142	LEU	2.1
2	B	210	PRO	2.1
2	D	28	GLY	2.1
1	A	127	LYS	2.1
1	G	166	VAL	2.0
2	D	136	LEU	2.0
2	D	174	LEU	2.0

6.2 Non-standard residues in protein, DNA, RNA chains ⓘ

There are no non-standard protein/DNA/RNA residues in this entry.

6.3 Carbohydrates ⓘ

There are no carbohydrates in this entry.

6.4 Ligands [i](#)

In the following table, the Atoms column lists the number of modelled atoms in the group and the number defined in the chemical component dictionary. LLDF column lists the quality of electron density of the group with respect to its neighbouring residues in protein, DNA or RNA chains. The B-factors column lists the minimum, median, 95th percentile and maximum values of B factors of atoms in the group. The column labelled 'Q< 0.9' lists the number of atoms with occupancy less than 0.9.

Mol	Type	Chain	Res	Atoms	RSCC	RSR	LLDF	B-factors(Å ²)	Q<0.9
3	NAG	E	308	14/15	0.75	0.30	4.07	43,55,58,60	0
3	NAG	D	306	14/15	0.73	0.34	-	42,50,53,55	0
3	NAG	G	310	14/15	0.65	0.32	-	56,63,65,65	0
3	NAG	C	304	14/15	0.79	0.25	-	50,55,62,62	0
3	NAG	E	307	14/15	0.81	0.17	-	54,59,62,62	0
3	NAG	B	303	14/15	0.66	0.23	-	41,48,50,50	0
4	NDG	G	311	14/15	0.83	0.21	-	40,54,59,60	0
3	NAG	A	302	14/15	0.90	0.20	-	41,49,55,60	0
3	NAG	H	312	14/15	0.74	0.30	-	41,46,50,51	0
3	NAG	C	305	14/15	0.84	0.22	-	39,49,55,56	0
3	NAG	F	309	14/15	0.80	0.27	-	38,43,49,50	0
3	NAG	A	301	14/15	0.73	0.27	-	53,59,61,62	0

6.5 Other polymers [i](#)

There are no such residues in this entry.