



# Full wwPDB X-ray Structure Validation Report ⓘ

Feb 1, 2016 – 06:34 PM GMT

PDB ID : 4M21  
Title : Crystal Structure of small molecule acrylamide 11 covalently bound to K-Ras G12C  
Authors : Ostrem, J.M.; Peters, U.; Sos, M.L.; Wells, J.A.; Shokat, K.M.  
Deposited on : 2013-08-05  
Resolution : 1.94 Å(reported)

This is a Full wwPDB X-ray Structure Validation Report for a publicly released PDB entry.  
We welcome your comments at [validation@mail.wwpdb.org](mailto:validation@mail.wwpdb.org)  
A user guide is available at  
<http://wwpdb.org/validation/2016/XrayValidationReportHelp>  
with specific help available everywhere you see the ⓘ symbol.

---

The following versions of software and data (see [references ⓘ](#)) were used in the production of this report:

MolProbity : 4.02b-467  
Mogul : 1.7 (RC4), CSD as536be (2015)  
Xtriage (Phenix) : 1.9-1692  
EDS : rb-20026688  
Percentile statistics : 20151230.v01 (using entries in the PDB archive December 30th 2015)  
Refmac : 5.8.0135  
CCP4 : 6.5.0  
Ideal geometry (proteins) : Engh & Huber (2001)  
Ideal geometry (DNA, RNA) : Parkinson et al. (1996)  
Validation Pipeline (wwPDB-VP) : trunk26865

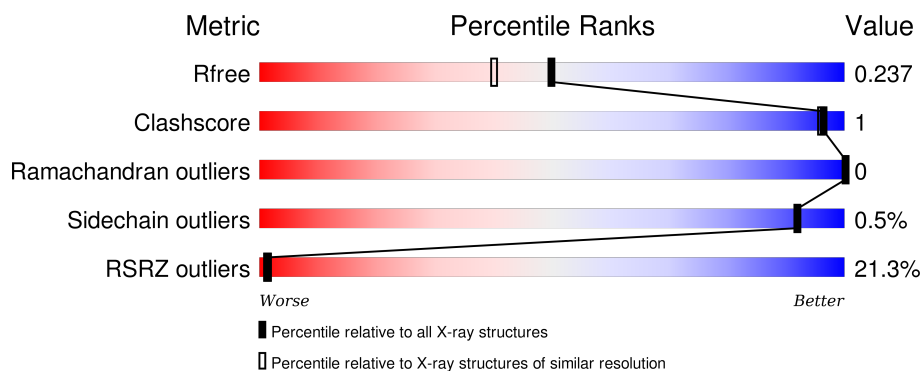
# 1 Overall quality at a glance i

The following experimental techniques were used to determine the structure:

## *X-RAY DIFFRACTION*

The reported resolution of this entry is 1.94 Å.

Percentile scores (ranging between 0-100) for global validation metrics of the entry are shown in the following graphic. The table shows the number of entries on which the scores are based.



Metric	Whole archive (#Entries)	Similar resolution (#Entries, resolution range(Å))
$R_{free}$	91344	2910 (1.96-1.92)
Clashscore	102246	3095 (1.96-1.92)
Ramachandran outliers	100387	3062 (1.96-1.92)
Sidechain outliers	100360	3062 (1.96-1.92)
RSRZ outliers	91569	2915 (1.96-1.92)

The table below summarises the geometric issues observed across the polymeric chains and their fit to the electron density. The red, orange, yellow and green segments on the lower bar indicate the fraction of residues that contain outliers for  $\geq 3$ , 2, 1 and 0 types of geometric quality criteria. A grey segment represents the fraction of residues that are not modelled. The numeric value for each fraction is indicated below the corresponding segment, with a dot representing fractions  $\leq 5\%$ . The upper red bar (where present) indicates the fraction of residues that have poor fit to the electron density. The numeric value is given above the bar.

Mol	Chain	Length	Quality of chain
1	A	170	<div> <div>18%</div> <div>90%</div> <div>6%</div> </div>
1	B	170	<div> <div>16%</div> <div>88%</div> <div>8%</div> </div>
1	C	170	<div> <div>24%</div> <div>82%</div> <div>14%</div> </div>

## 2 Entry composition

There are 4 unique types of molecules in this entry. The entry contains 7297 atoms, of which 3548 are hydrogens and 0 are deuteriums.

In the tables below, the ZeroOcc column contains the number of atoms modelled with zero occupancy, the AltConf column contains the number of residues with at least one atom in alternate conformation and the Trace column contains the number of residues modelled with at most 2 atoms.

- Molecule 1 is a protein called K-Ras GTPase.

Mol	Chain	Residues	Atoms						ZeroOcc	AltConf	Trace
1	A	159	Total	C	H	N	O	S	0	3	0
			2475	782	1234	220	235	4			
1	B	156	Total	C	H	N	O	S	0	0	0
			2387	760	1183	211	228	5			
1	C	146	Total	C	H	N	O	S	0	0	0
			2190	705	1081	194	207	3			

There are 33 discrepancies between the modelled and reference sequences:

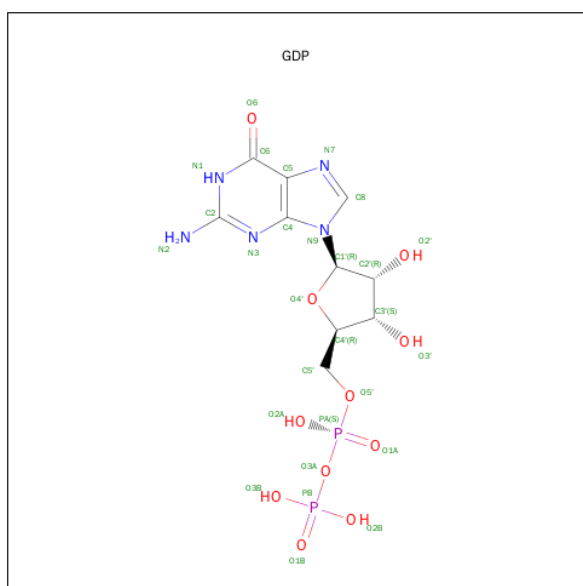
Chain	Residue	Modelled	Actual	Comment	Reference
A	0	GLY	-	EXPRESSION TAG	UNP P01116
A	12	CYS	GLY	VARIANT	UNP P01116
A	51	SER	CYS	ENGINEERED MUTATION	UNP P01116
A	80	LEU	CYS	ENGINEERED MUTATION	UNP P01116
A	118	SER	CYS	ENGINEERED MUTATION	UNP P01116
A	151	GLY	ARG	SEE REMARK 999	UNP P01116
A	153	ASP	GLU	SEE REMARK 999	UNP P01116
A	165	LYS	GLN	SEE REMARK 999	UNP P01116
A	166	HIS	TYR	SEE REMARK 999	UNP P01116
A	167	LYS	ARG	SEE REMARK 999	UNP P01116
A	168	GLU	LEU	SEE REMARK 999	UNP P01116
B	0	GLY	-	EXPRESSION TAG	UNP P01116
B	12	CYS	GLY	VARIANT	UNP P01116
B	51	SER	CYS	ENGINEERED MUTATION	UNP P01116
B	80	LEU	CYS	ENGINEERED MUTATION	UNP P01116
B	118	SER	CYS	ENGINEERED MUTATION	UNP P01116
B	151	GLY	ARG	SEE REMARK 999	UNP P01116
B	153	ASP	GLU	SEE REMARK 999	UNP P01116
B	165	LYS	GLN	SEE REMARK 999	UNP P01116
B	166	HIS	TYR	SEE REMARK 999	UNP P01116
B	167	LYS	ARG	SEE REMARK 999	UNP P01116
B	168	GLU	LEU	SEE REMARK 999	UNP P01116
C	0	GLY	-	EXPRESSION TAG	UNP P01116

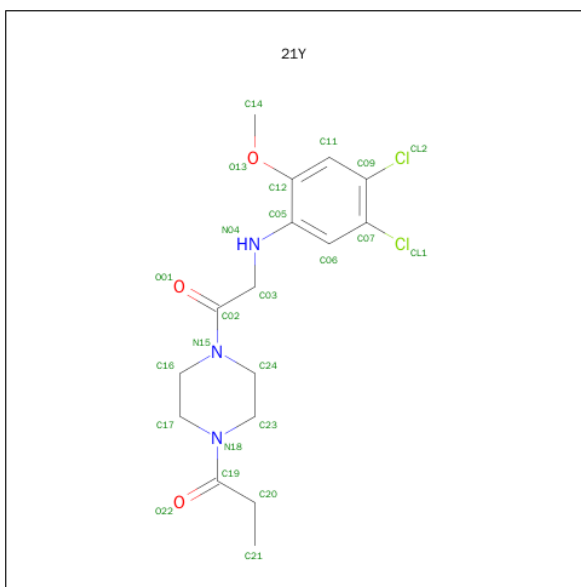
*Continued on next page...*

Continued from previous page...

Chain	Residue	Modelled	Actual	Comment	Reference
C	12	CYS	GLY	VARIANT	UNP P01116
C	51	SER	CYS	ENGINEERED MUTATION	UNP P01116
C	80	LEU	CYS	ENGINEERED MUTATION	UNP P01116
C	118	SER	CYS	ENGINEERED MUTATION	UNP P01116
C	151	GLY	ARG	SEE REMARK 999	UNP P01116
C	153	ASP	GLU	SEE REMARK 999	UNP P01116
C	165	LYS	GLN	SEE REMARK 999	UNP P01116
C	166	HIS	TYR	SEE REMARK 999	UNP P01116
C	167	LYS	ARG	SEE REMARK 999	UNP P01116
C	168	GLU	LEU	SEE REMARK 999	UNP P01116

- Molecule 2 is GUANOSINE-5'-DIPHOSPHATE (three-letter code: GDP) (formula:  $C_{10}H_{15}N_5O_{11}P_2$ ).





Mol	Chain	Residues	Atoms						ZeroOcc	AltConf
3	B	1	Total	C	Cl	H	N	O	0	0
			44	16	2	20	3	3		

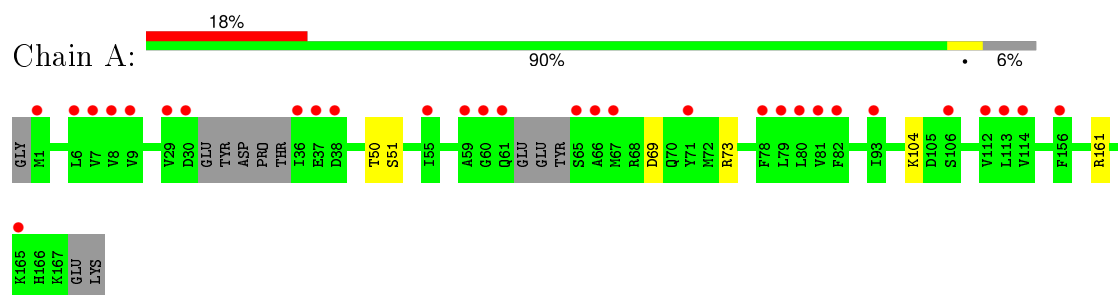
- Molecule 4 is water.

Mol	Chain	Residues	Atoms		ZeroOcc	AltConf
4	A	45	Total	O	0	0
			45	45		
4	B	26	Total	O	0	0
			26	26		
4	C	16	Total	O	0	0
			16	16		

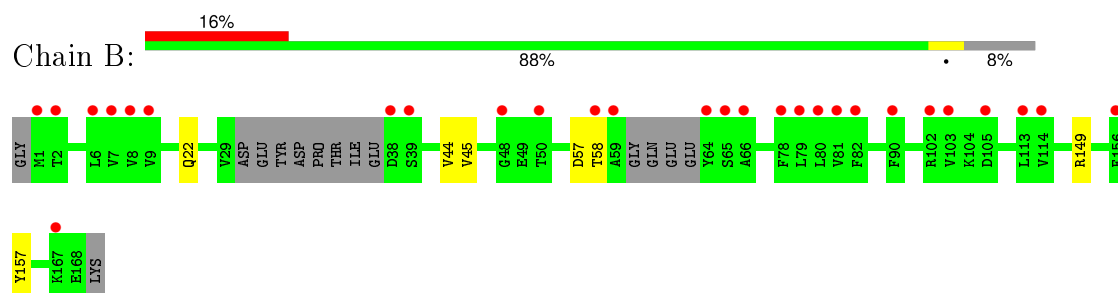
### 3 Residue-property plots [i](#)

These plots are drawn for all protein, RNA and DNA chains in the entry. The first graphic for a chain summarises the proportions of errors displayed in the second graphic. The second graphic shows the sequence view annotated by issues in geometry and electron density. Residues are color-coded according to the number of geometric quality criteria for which they contain at least one outlier: green = 0, yellow = 1, orange = 2 and red = 3 or more. A red dot above a residue indicates a poor fit to the electron density ( $RSRZ > 2$ ). Stretches of 2 or more consecutive residues without any outlier are shown as a green connector. Residues present in the sample, but not in the model, are shown in grey.

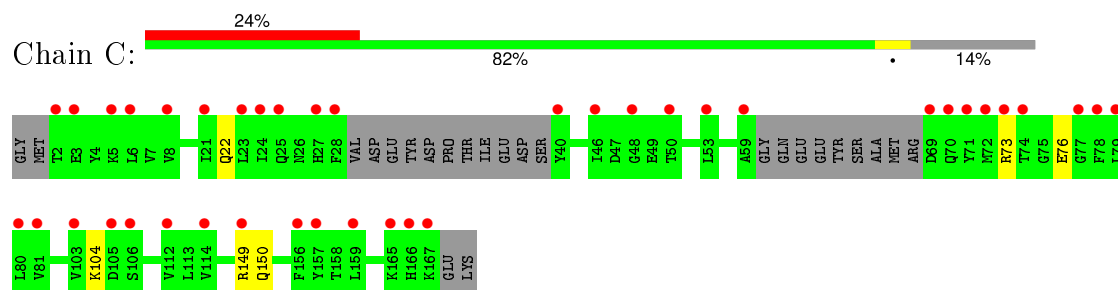
#### • Molecule 1: K-Ras GTPase



#### • Molecule 1: K-Ras GTPase



#### • Molecule 1: K-Ras GTPase



## 4 Data and refinement statistics

Property	Value	Source
Space group	C 1 2 1	Depositor
Cell constants a, b, c, $\alpha$ , $\beta$ , $\gamma$	68.56 Å 83.93 Å 87.06 Å 90.00° 111.24° 90.00°	Depositor
Resolution (Å)	23.48 – 1.94 23.48 – 1.94	Depositor EDS
% Data completeness (in resolution range)	99.8 (23.48-1.94) 96.1 (23.48-1.94)	Depositor EDS
$R_{merge}$	0.06	Depositor
$R_{sym}$	0.06	Depositor
$\langle I/\sigma(I) \rangle$ <sup>1</sup>	3.30 (at 1.93 Å)	Xtriage
Refinement program	PHENIX (phenix.refine: dev_1402)	Depositor
R, $R_{free}$	0.190 , 0.226 0.201 , 0.237	Depositor DCC
$R_{free}$ test set	2000 reflections (6.48%)	DCC
Wilson B-factor (Å <sup>2</sup> )	35.1	Xtriage
Anisotropy	0.189	Xtriage
Bulk solvent $k_{sol}$ (e/Å <sup>3</sup> ), $B_{sol}$ (Å <sup>2</sup> )	0.39 , 49.3	EDS
Estimated twinning fraction	0.011 for h,-k,-h-l	Xtriage
L-test for twinning <sup>2</sup>	$\langle  L  \rangle = 0.50$ , $\langle L^2 \rangle = 0.33$	Xtriage
Outliers	0 of 34109 reflections	Xtriage
$F_o, F_c$ correlation	0.96	EDS
Total number of atoms	7297	wwPDB-VP
Average B, all atoms (Å <sup>2</sup> )	58.0	wwPDB-VP

Xtriage's analysis on translational NCS is as follows: *The largest off-origin peak in the Patterson function is 5.63% of the height of the origin peak. No significant pseudotranslation is detected.*

<sup>1</sup>Intensities estimated from amplitudes.

<sup>2</sup>Theoretical values of  $\langle |L| \rangle$ ,  $\langle L^2 \rangle$  for acentric reflections are 0.5, 0.375 respectively for untwinned datasets, and 0.333, 0.2 for perfectly twinned datasets.

## 5 Model quality

### 5.1 Standard geometry

Bond lengths and bond angles in the following residue types are not validated in this section: GDP, 21Y

The Z score for a bond length (or angle) is the number of standard deviations the observed value is removed from the expected value. A bond length (or angle) with  $|Z| > 5$  is considered an outlier worth inspection. RMSZ is the root-mean-square of all Z scores of the bond lengths (or angles).

Mol	Chain	Bond lengths		Bond angles	
		RMSZ	# $ Z  > 5$	RMSZ	# $ Z  > 5$
1	A	0.31	0/1266	0.49	0/1705
1	B	0.30	0/1220	0.46	0/1645
1	C	0.28	0/1125	0.47	0/1520
All	All	0.30	0/3611	0.48	0/4870

There are no bond length outliers.

There are no bond angle outliers.

There are no chirality outliers.

There are no planarity outliers.

### 5.2 Too-close contacts

In the following table, the Non-H and H(model) columns list the number of non-hydrogen atoms and hydrogen atoms in the chain respectively. The H(added) column lists the number of hydrogen atoms added and optimized by MolProbity. The Clashes column lists the number of clashes within the asymmetric unit, whereas Symm-Clashes lists symmetry related clashes.

Mol	Chain	Non-H	H(model)	H(added)	Clashes	Symm-Clashes
1	A	1241	1234	1233	2	1
1	B	1204	1183	1181	5	0
1	C	1109	1081	1078	4	0
2	A	28	10	12	0	0
2	B	28	10	12	0	0
2	C	28	10	12	0	0
3	B	24	20	19	1	0
4	A	45	0	0	1	0
4	B	26	0	0	0	0
4	C	16	0	0	1	0
All	All	3749	3548	3547	10	1



The all-atom clashscore is defined as the number of clashes found per 1000 atoms (including hydrogen atoms). The all-atom clashscore for this structure is 1.

All (10) close contacts within the same asymmetric unit are listed below, sorted by their clash magnitude.

Atom-1	Atom-2	Interatomic distance (Å)	Clash overlap (Å)
1:B:57:ASP:OD2	1:C:150:GLN:NE2	2.16	0.78
1:C:76:GLU:OE1	4:C:316:HOH:O	2.11	0.68
1:A:161:ARG:NH1	4:A:319:HOH:O	2.19	0.61
1:B:22:GLN:O	1:B:149:ARG:NH1	2.42	0.52
1:C:73:ARG:O	1:C:104:LYS:NZ	2.43	0.52
1:C:22:GLN:O	1:C:149:ARG:NH1	2.35	0.51
1:B:58:THR:HB	3:B:201:21Y:CL1	2.50	0.48
1:B:44:VAL:HG22	1:B:45:VAL:N	2.35	0.41
1:B:44:VAL:HG21	1:B:157:TYR:CE1	2.55	0.41
1:A:73:ARG:O	1:A:104:LYS:NZ	2.51	0.40

All (1) symmetry-related close contacts are listed below. The label for Atom-2 includes the symmetry operator and encoded unit-cell translations to be applied.

Atom-1	Atom-2	Interatomic distance (Å)	Clash overlap (Å)
1:A:50:THR:HG1	1:A:50:THR:HG1[2_857]	1.29	0.31

## 5.3 Torsion angles [i](#)

### 5.3.1 Protein backbone [i](#)

In the following table, the Percentiles column shows the percent Ramachandran outliers of the chain as a percentile score with respect to all X-ray entries followed by that with respect to entries of similar resolution.

The Analysed column shows the number of residues for which the backbone conformation was analysed, and the total number of residues.

Mol	Chain	Analysed	Favoured	Allowed	Outliers	Percentiles	
1	A	156/170 (92%)	156 (100%)	0	0	100	100
1	B	150/170 (88%)	148 (99%)	2 (1%)	0	100	100
1	C	140/170 (82%)	135 (96%)	5 (4%)	0	100	100
All	All	446/510 (88%)	439 (98%)	7 (2%)	0	100	100

There are no Ramachandran outliers to report.

### 5.3.2 Protein sidechains [i](#)

In the following table, the Percentiles column shows the percent sidechain outliers of the chain as a percentile score with respect to all X-ray entries followed by that with respect to entries of similar resolution.

The Analysed column shows the number of residues for which the sidechain conformation was analysed, and the total number of residues.

Mol	Chain	Analysed	Rotameric	Outliers	Percentiles	
1	A	132/150 (88%)	130 (98%)	2 (2%)	72	66
1	B	126/150 (84%)	126 (100%)	0	100	100
1	C	113/150 (75%)	113 (100%)	0	100	100
All	All	371/450 (82%)	369 (100%)	2 (0%)	92	92

All (2) residues with a non-rotameric sidechain are listed below:

Mol	Chain	Res	Type
1	A	51	SER
1	A	69	ASP

Some sidechains can be flipped to improve hydrogen bonding and reduce clashes. All (1) such sidechains are listed below:

Mol	Chain	Res	Type
1	B	95	HIS

### 5.3.3 RNA [i](#)

There are no RNA molecules in this entry.

## 5.4 Non-standard residues in protein, DNA, RNA chains [i](#)

There are no non-standard protein/DNA/RNA residues in this entry.

## 5.5 Carbohydrates [i](#)

There are no carbohydrates in this entry.

## 5.6 Ligand geometry ⓘ

4 ligands are modelled in this entry.

In the following table, the Counts columns list the number of bonds (or angles) for which Mogul statistics could be retrieved, the number of bonds (or angles) that are observed in the model and the number of bonds (or angles) that are defined in the chemical component dictionary. The Link column lists molecule types, if any, to which the group is linked. The Z score for a bond length (or angle) is the number of standard deviations the observed value is removed from the expected value. A bond length (or angle) with  $|Z| > 2$  is considered an outlier worth inspection. RMSZ is the root-mean-square of all Z scores of the bond lengths (or angles).

Mol	Type	Chain	Res	Link	Bond lengths			Bond angles		
					Counts	RMSZ	# $ Z  > 2$	Counts	RMSZ	# $ Z  > 2$
2	GDP	A	201	-	23,30,30	1.23	3 (13%)	28,47,47	1.77	5 (17%)
3	21Y	B	201	1	25,25,25	2.11	6 (24%)	34,34,34	1.62	8 (23%)
2	GDP	B	202	-	23,30,30	1.26	3 (13%)	28,47,47	1.70	5 (17%)
2	GDP	C	201	-	23,30,30	1.31	3 (13%)	28,47,47	1.60	6 (21%)

In the following table, the Chirals column lists the number of chiral outliers, the number of chiral centers analysed, the number of these observed in the model and the number defined in the chemical component dictionary. Similar counts are reported in the Torsion and Rings columns. '-' means no outliers of that kind were identified.

Mol	Type	Chain	Res	Link	Chirals	Torsions	Rings
2	GDP	A	201	-	-	0/12/32/32	0/3/3/3
3	21Y	B	201	1	-	0/17/27/27	0/2/2/2
2	GDP	B	202	-	-	0/12/32/32	0/3/3/3
2	GDP	C	201	-	-	0/12/32/32	0/3/3/3

All (15) bond length outliers are listed below:

Mol	Chain	Res	Type	Atoms	Z	Observed(Å)	Ideal(Å)
2	A	201	GDP	C2-N2	2.01	1.35	1.32
2	C	201	GDP	C2-N2	2.10	1.35	1.32
2	B	202	GDP	C2-N2	2.20	1.35	1.32
3	B	201	21Y	C11-C09	2.47	1.42	1.38
2	C	201	GDP	C5-C4	2.68	1.46	1.40
2	B	202	GDP	C5-C4	2.74	1.46	1.40
2	A	201	GDP	C5-C4	2.80	1.46	1.40
3	B	201	21Y	C06-C05	2.95	1.44	1.39
3	B	201	21Y	C05-N04	3.17	1.46	1.37
2	B	202	GDP	C6-C5	3.25	1.47	1.41
2	A	201	GDP	C6-C5	3.28	1.47	1.41

*Continued on next page...*

*Continued from previous page...*

Mol	Chain	Res	Type	Atoms	Z	Observed(Å)	Ideal(Å)
3	B	201	21Y	C20-C19	3.36	1.56	1.51
2	C	201	GDP	C6-C5	3.74	1.48	1.41
3	B	201	21Y	C02-N15	4.38	1.45	1.35
3	B	201	21Y	C19-N18	5.83	1.48	1.35

All (24) bond angle outliers are listed below:

Mol	Chain	Res	Type	Atoms	Z	Observed(°)	Ideal(°)
2	B	202	GDP	C1'-N9-C4	-3.52	121.62	126.94
2	C	201	GDP	C4-C5-N7	-3.47	106.29	109.48
2	A	201	GDP	C1'-N9-C4	-3.34	121.91	126.94
2	C	201	GDP	PA-O3A-PB	-3.26	121.72	132.67
2	A	201	GDP	C4-C5-N7	-2.97	106.75	109.48
2	C	201	GDP	C1'-N9-C4	-2.79	122.72	126.94
2	B	202	GDP	C4-C5-N7	-2.72	106.98	109.48
3	B	201	21Y	O22-C19-C20	-2.32	116.62	121.67
3	B	201	21Y	C03-N04-C05	-2.23	120.30	123.73
2	A	201	GDP	PA-O3A-PB	-2.22	125.23	132.67
2	B	202	GDP	PA-O3A-PB	-2.21	125.25	132.67
2	A	201	GDP	N2-C2-N3	-2.14	117.56	120.29
2	C	201	GDP	N2-C2-N3	-2.09	117.63	120.29
2	B	202	GDP	N2-C2-N3	-2.06	117.66	120.29
2	C	201	GDP	C2'-C1'-N9	-2.03	111.19	114.29
3	B	201	21Y	C03-C02-N15	2.10	123.28	116.83
3	B	201	21Y	C02-C03-N04	2.63	117.13	111.08
3	B	201	21Y	C14-O13-C12	2.71	121.65	117.54
3	B	201	21Y	O13-C12-C05	3.36	119.16	114.87
3	B	201	21Y	C20-C19-N18	3.45	124.21	118.00
3	B	201	21Y	C21-C20-C19	3.77	120.04	112.91
2	C	201	GDP	C6-N1-C2	4.33	122.64	120.20
2	B	202	GDP	C6-N1-C2	6.07	123.63	120.20
2	A	201	GDP	C6-N1-C2	6.14	123.67	120.20

There are no chirality outliers.

There are no torsion outliers.

There are no ring outliers.

1 monomer is involved in 1 short contact:

Mol	Chain	Res	Type	Clashes	Symm-Clashes
3	B	201	21Y	1	0

## 5.7 Other polymers [i](#)

There are no such residues in this entry.

## 5.8 Polymer linkage issues [i](#)

There are no chain breaks in this entry.

## 6 Fit of model and data ⓘ

### 6.1 Protein, DNA and RNA chains ⓘ

In the following table, the column labelled ‘#RSRZ> 2’ contains the number (and percentage) of RSRZ outliers, followed by percent RSRZ outliers for the chain as percentile scores relative to all X-ray entries and entries of similar resolution. The OWAB column contains the minimum, median, 95<sup>th</sup> percentile and maximum values of the occupancy-weighted average B-factor per residue. The column labelled ‘Q< 0.9’ lists the number of (and percentage) of residues with an average occupancy less than 0.9.

Mol	Chain	Analysed	<RSRZ>	#RSRZ>2	OWAB(Å <sup>2</sup> )	Q<0.9
1	A	159/170 (93%)	0.85	30 (18%) 2 2	23, 42, 90, 118	0
1	B	156/170 (91%)	0.83	28 (17%) 2 2	24, 50, 98, 121	0
1	C	146/170 (85%)	1.34	40 (27%) 1 1	26, 55, 107, 125	0
All	All	461/510 (90%)	1.00	98 (21%) 1 1	23, 48, 101, 125	0

All (98) RSRZ outliers are listed below:

Mol	Chain	Res	Type	RSRZ
1	A	66	ALA	8.8
1	A	36	ILE	8.6
1	C	71	TYR	8.6
1	C	48	GLY	8.4
1	A	67	MET	8.4
1	C	79	LEU	7.1
1	C	21	ILE	6.0
1	C	80	LEU	5.2
1	C	78	PHE	4.8
1	C	74	THR	4.7
1	B	1	MET	4.5
1	C	156	PHE	4.5
1	C	72	MET	4.2
1	B	66	ALA	4.1
1	B	79	LEU	4.1
1	C	8	VAL	4.1
1	A	80	LEU	4.0
1	B	59	ALA	3.9
1	C	59	ALA	3.7
1	C	77	GLY	3.7
1	B	64	TYR	3.7
1	C	105	ASP	3.7
1	B	80	LEU	3.6

*Continued on next page...*

*Continued from previous page...*

Mol	Chain	Res	Type	RSRZ
1	C	27	HIS	3.6
1	A	71	TYR	3.6
1	C	70	GLN	3.5
1	C	3	GLU	3.5
1	C	28	PHE	3.5
1	C	81	VAL	3.4
1	A	81	VAL	3.4
1	A	30	ASP	3.4
1	B	6	LEU	3.3
1	B	81	VAL	3.3
1	A	79	LEU	3.3
1	A	29	VAL	3.2
1	A	1	MET	3.2
1	C	159	LEU	3.1
1	A	60	GLY	3.1
1	B	7	VAL	3.1
1	B	8	VAL	3.1
1	B	48	GLY	3.1
1	C	2	THR	3.0
1	C	5	LYS	3.0
1	B	38	ASP	3.0
1	A	78	PHE	3.0
1	B	167	LYS	3.0
1	B	2	THR	3.0
1	A	165	LYS	3.0
1	C	46	ILE	2.9
1	B	105	ASP	2.9
1	B	78	PHE	2.9
1	C	166	HIS	2.9
1	C	73	ARG	2.8
1	B	50	THR	2.7
1	C	114	VAL	2.7
1	A	106	SER	2.6
1	B	58	THR	2.6
1	A	156	PHE	2.6
1	A	6	LEU	2.6
1	B	90	PHE	2.6
1	A	65	SER	2.6
1	C	40	TYR	2.5
1	C	149	ARG	2.5
1	A	114	VAL	2.5
1	C	69	ASP	2.5

*Continued on next page...*

*Continued from previous page...*

Mol	Chain	Res	Type	RSRZ
1	C	165	LYS	2.5
1	A	93	ILE	2.4
1	B	102	ARG	2.4
1	C	106	SER	2.4
1	B	82	PHE	2.4
1	C	103	VAL	2.4
1	B	156	PHE	2.4
1	C	112	VAL	2.4
1	C	157	TYR	2.3
1	B	65	SER	2.3
1	A	8	VAL	2.3
1	A	38	ASP	2.3
1	C	50	THR	2.3
1	B	103	VAL	2.2
1	C	167	LYS	2.2
1	C	25	GLN	2.2
1	C	6	LEU	2.2
1	A	112	VAL	2.2
1	A	7	VAL	2.2
1	A	9	VAL	2.2
1	A	37	GLU	2.1
1	C	23	LEU	2.1
1	A	59	ALA	2.1
1	A	82	PHE	2.1
1	B	39	SER	2.1
1	C	24	ILE	2.1
1	B	114	VAL	2.1
1	B	113	LEU	2.1
1	C	53	LEU	2.1
1	B	9	VAL	2.1
1	A	61	GLN	2.1
1	A	55	ILE	2.0
1	A	113	LEU	2.0

## 6.2 Non-standard residues in protein, DNA, RNA chains ⓘ

There are no non-standard protein/DNA/RNA residues in this entry.

## 6.3 Carbohydrates ⓘ

There are no carbohydrates in this entry.



## 6.4 Ligands [i](#)

In the following table, the Atoms column lists the number of modelled atoms in the group and the number defined in the chemical component dictionary. LLDF column lists the quality of electron density of the group with respect to its neighbouring residues in protein, DNA or RNA chains. The B-factors column lists the minimum, median, 95<sup>th</sup> percentile and maximum values of B factors of atoms in the group. The column labelled 'Q< 0.9' lists the number of atoms with occupancy less than 0.9.

Mol	Type	Chain	Res	Atoms	RSCC	RSR	LLDF	B-factors(Å <sup>2</sup> )	Q<0.9
3	21Y	B	201	24/24	0.57	0.31	1.90	81,97,131,179	0
2	GDP	C	201	28/28	0.93	0.13	-0.21	35,48,60,63	0
2	GDP	A	201	28/28	0.97	0.08	-0.78	26,32,43,47	0
2	GDP	B	202	28/28	0.96	0.09	-1.71	34,39,51,54	0

## 6.5 Other polymers [i](#)

There are no such residues in this entry.