



wwPDB X-ray Structure Validation Summary Report ⓘ

Feb 1, 2016 – 10:30 AM GMT

PDB ID : 3M4O
Title : RNA polymerase II elongation complex B
Authors : Wang, D.; Zhu, G.; Huang, X.; Lippard, S.J.
Deposited on : 2010-03-11
Resolution : 3.57 Å(reported)

This is a wwPDB X-ray Structure Validation Summary Report for a publicly released PDB entry.
We welcome your comments at validation@mail.wwpdb.org
A user guide is available at
<http://wwpdb.org/validation/2016/XrayValidationReportHelp>
with specific help available everywhere you see the ⓘ symbol.

The following versions of software and data (see [references ⓘ](#)) were used in the production of this report:

MolProbity : 4.02b-467
Mogul : 1.7 (RC4), CSD as536be (2015)
Xtriage (Phenix) : 1.9-1692
EDS : rb-20026688
Percentile statistics : 20151230.v01 (using entries in the PDB archive December 30th 2015)
Refmac : 5.8.0135
CCP4 : 6.5.0
Ideal geometry (proteins) : Engh & Huber (2001)
Ideal geometry (DNA, RNA) : Parkinson et al. (1996)
Validation Pipeline (wwPDB-VP) : trunk26865

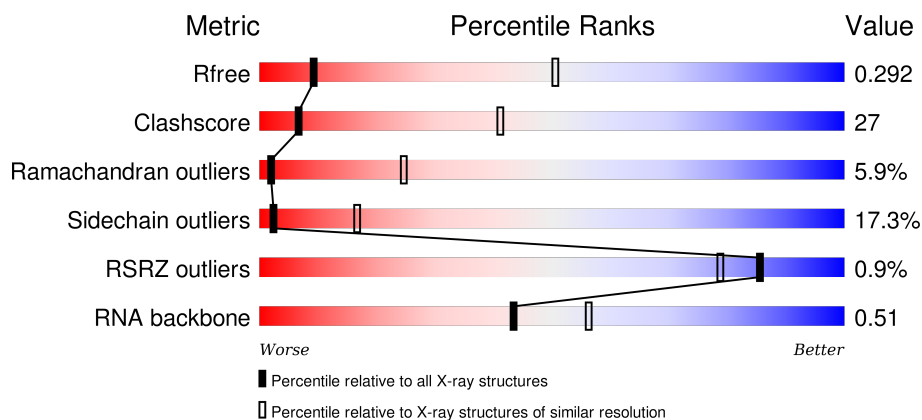
1 Overall quality at a glance

The following experimental techniques were used to determine the structure:

X-RAY DIFFRACTION

The reported resolution of this entry is 3.57 Å.

Percentile scores (ranging between 0-100) for global validation metrics of the entry are shown in the following graphic. The table shows the number of entries on which the scores are based.






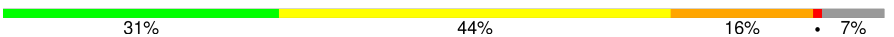

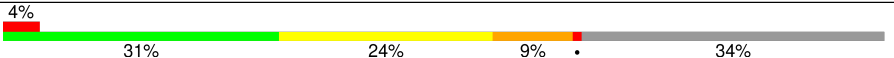

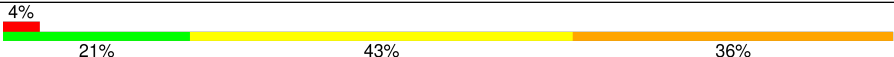

Metric	Whole archive (#Entries)	Similar resolution (#Entries, resolution range(Å))
R_{free}	91344	1261 (3.76-3.40)
Clashscore	102246	1026 (3.72-3.44)
Ramachandran outliers	100387	1028 (3.74-3.42)
Sidechain outliers	100360	1028 (3.74-3.42)
RSRZ outliers	91569	1268 (3.76-3.40)
RNA backbone	2183	1057 (4.30-2.80)

The table below summarises the geometric issues observed across the polymeric chains and their fit to the electron density. The red, orange, yellow and green segments on the lower bar indicate the fraction of residues that contain outliers for ≥ 3 , 2, 1 and 0 types of geometric quality criteria. A grey segment represents the fraction of residues that are not modelled. The numeric value for each fraction is indicated below the corresponding segment, with a dot representing fractions $\leq 5\%$. The upper red bar (where present) indicates the fraction of residues that have poor fit to the electron density. The numeric value is given above the bar.

Mol	Chain	Length	Quality of chain
1	A	1733	<div> <div>2%</div> <div>38% 34% 8% 20%</div> </div>
2	B	1224	<div> <div>41% 38% 10% 10%</div> </div>
3	C	318	<div> <div>38% 36% 9% 16%</div> </div>
4	E	215	<div> <div>2%</div> <div>55% 38% 7%</div> </div>

Continued on next page...

Continued from previous page...

Mol	Chain	Length	Quality of chain
5	F	155	
6	H	146	
7	I	122	
8	J	70	
9	K	120	
10	L	70	
11	R	10	
12	T	28	
13	N	14	

2 Entry composition [i](#)

There are 16 unique types of molecules in this entry. The entry contains 29227 atoms, of which 0 are hydrogens and 0 are deuteriums.

In the tables below, the ZeroOcc column contains the number of atoms modelled with zero occupancy, the AltConf column contains the number of residues with at least one atom in alternate conformation and the Trace column contains the number of residues modelled with at most 2 atoms.

- Molecule 1 is a protein called DNA-directed RNA polymerase II subunit RPB1.

Mol	Chain	Residues	Atoms					ZeroOcc	AltConf	Trace
1	A	1395	Total	C	N	O	S	0	0	0
			10969	6917	1923	2068	61			

- Molecule 2 is a protein called DNA-directed RNA polymerase II subunit RPB2.

Mol	Chain	Residues	Atoms					ZeroOcc	AltConf	Trace
2	B	1106	Total	C	N	O	S	0	0	0
			8792	5568	1538	1631	55			

- Molecule 3 is a protein called DNA-directed RNA polymerase II subunit RPB3.

Mol	Chain	Residues	Atoms					ZeroOcc	AltConf	Trace
3	C	266	Total	C	N	O	S	0	0	0
			2095	1317	348	417	13			

- Molecule 4 is a protein called DNA-directed RNA polymerases I, II, and III subunit RPABC1.

Mol	Chain	Residues	Atoms					ZeroOcc	AltConf	Trace
4	E	214	Total	C	N	O	S	0	0	0
			1752	1111	309	321	11			

- Molecule 5 is a protein called DNA-directed RNA polymerases I, II, and III subunit RPABC2.

Mol	Chain	Residues	Atoms					ZeroOcc	AltConf	Trace
5	F	84	Total	C	N	O	S	0	0	0
			679	434	115	127	3			

- Molecule 6 is a protein called DNA-directed RNA polymerases I, II, and III subunit RPABC3.

Mol	Chain	Residues	Atoms					ZeroOcc	AltConf	Trace
6	H	133	Total	C	N	O	S	0	0	0
			1068	673	180	211	4			

- Molecule 7 is a protein called DNA-directed RNA polymerase II subunit RPB9.

Mol	Chain	Residues	Atoms					ZeroOcc	AltConf	Trace
7	I	119	Total	C	N	O	S	0	0	0
			971	596	179	186	10			

- Molecule 8 is a protein called DNA-directed RNA polymerases I, II, and III subunit RPABC5.

Mol	Chain	Residues	Atoms					ZeroOcc	AltConf	Trace
8	J	65	Total	C	N	O	S	0	0	0
			532	339	93	94	6			

- Molecule 9 is a protein called DNA-directed RNA polymerase II subunit RPB11.

Mol	Chain	Residues	Atoms					ZeroOcc	AltConf	Trace
9	K	114	Total	C	N	O	S	0	0	0
			919	590	156	171	2			

- Molecule 10 is a protein called DNA-directed RNA polymerases I, II, and III subunit RPABC4.

Mol	Chain	Residues	Atoms					ZeroOcc	AltConf	Trace
10	L	46	Total	C	N	O	S	0	0	0
			363	224	72	63	4			

- Molecule 11 is a RNA chain called RNA (5'-R(*AP*UP*GP*GP*AP*GP*AP*GP*GP*A)-3').

Mol	Chain	Residues	Atoms					ZeroOcc	AltConf	Trace
11	R	10	Total	C	N	O	P	0	0	0
			220	99	47	65	9			

- Molecule 12 is a DNA chain called DNA (28-MER).

Mol	Chain	Residues	Atoms					ZeroOcc	AltConf	Trace
12	T	28	Total	C	N	O	P	0	0	0
			553	265	92	168	28			

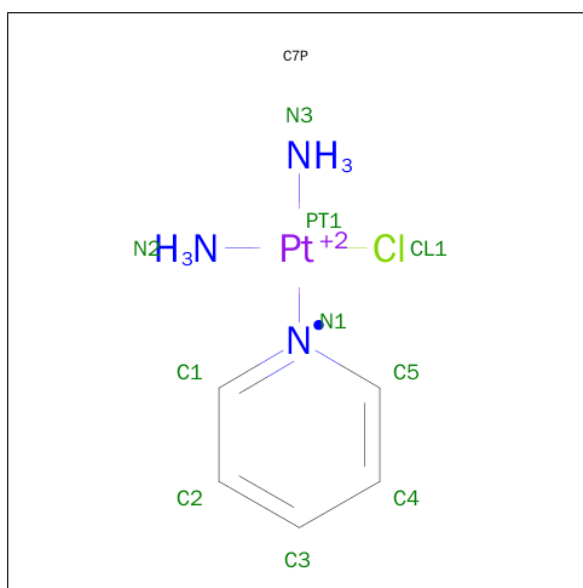
- Molecule 13 is a DNA chain called DNA (5'-D(P*GP*TP*GP*GP*TP*TP*AP*TP*GP*GP*GP*TP*AP*G)-3').

Mol	Chain	Residues	Atoms					ZeroOcc	AltConf	Trace
13	N	14	Total	C	N	O	P	0	0	0
			296	140	55	87	14			

- Molecule 14 is ZINC ION (three-letter code: ZN) (formula: Zn).

Mol	Chain	Residues	Atoms		ZeroOcc	AltConf
14	J	1	Total	Zn	0	0
			1	1		
14	B	1	Total	Zn	0	0
			1	1		
14	I	2	Total	Zn	0	0
			2	2		
14	C	1	Total	Zn	0	0
			1	1		
14	A	2	Total	Zn	0	0
			2	2		
14	L	1	Total	Zn	0	0
			1	1		

- Molecule 15 is CIS-DIAMMINE(PYRIDINE)CHLOROPLATINUM(II) (three-letter code: C7P) (formula: C₅H₁₁ClN₃Pt).



Mol	Chain	Residues	Atoms				ZeroOcc	AltConf
15	T	1	Total	C	N	Pt	0	0
			9	5	3	1		

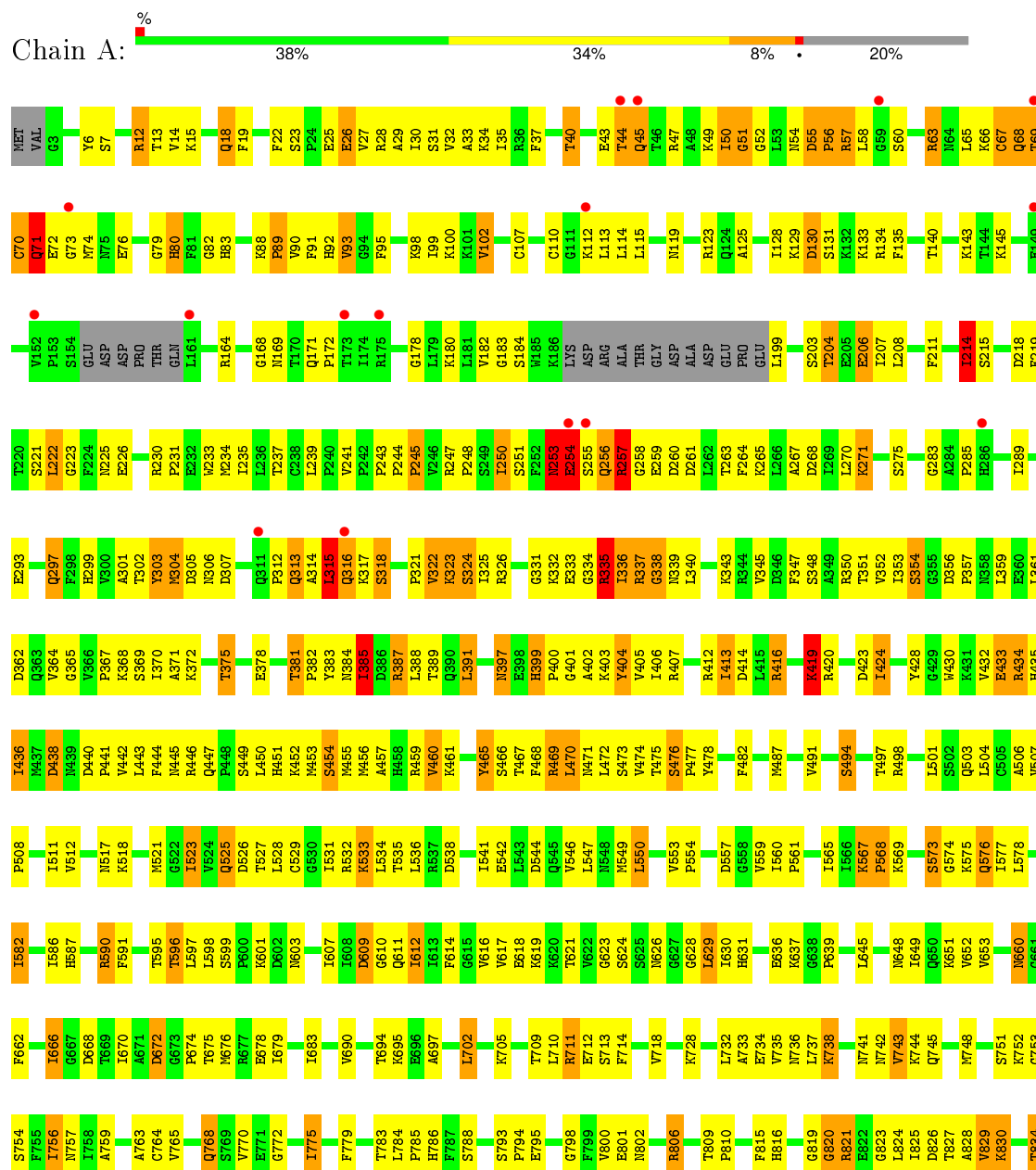
- Molecule 16 is MAGNESIUM ION (three-letter code: MG) (formula: Mg).

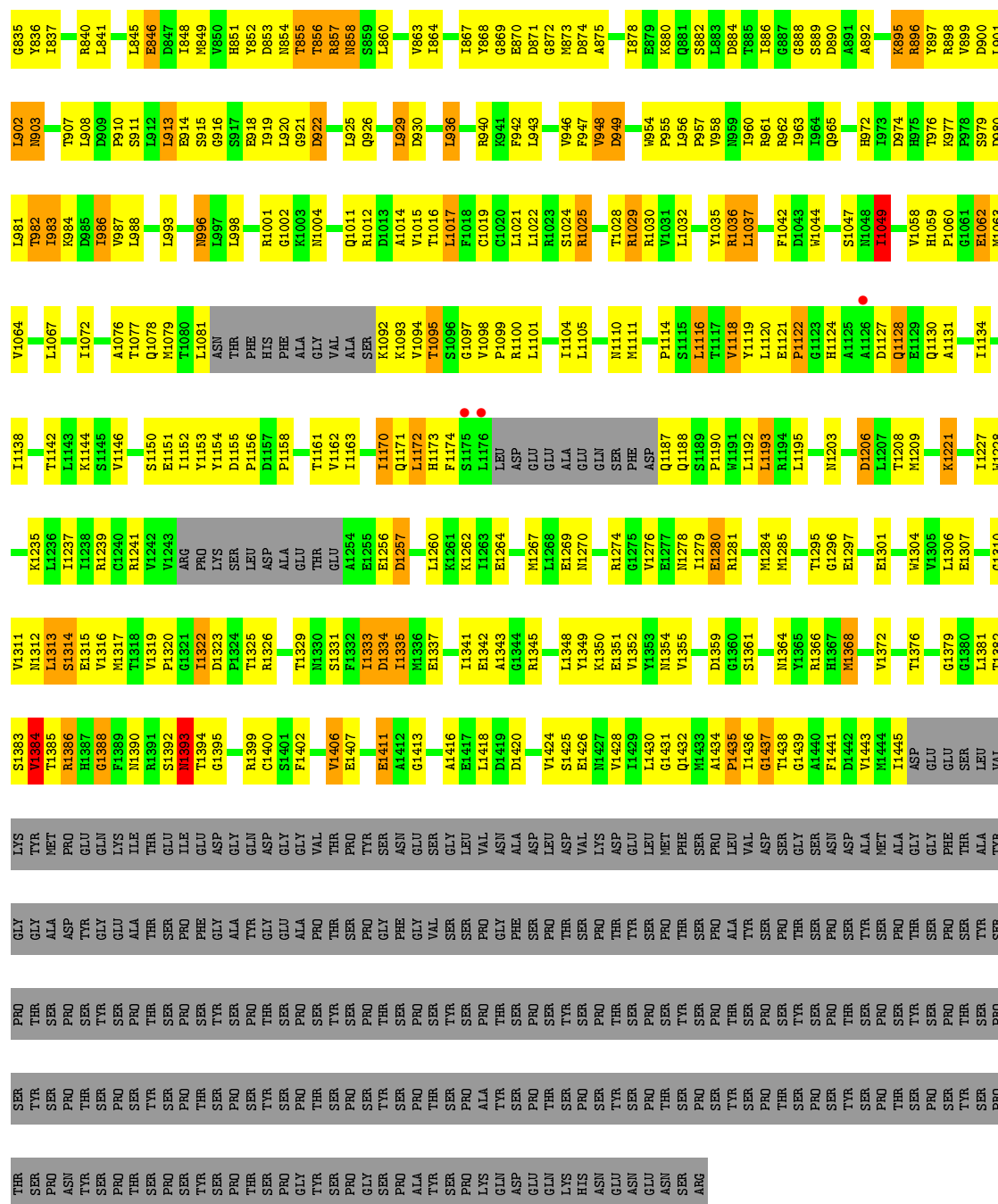
Mol	Chain	Residues	Atoms		ZeroOcc	AltConf
16	A	1	Total	Mg	0	0
			1	1		

3 Residue-property plots

These plots are drawn for all protein, RNA and DNA chains in the entry. The first graphic for a chain summarises the proportions of errors displayed in the second graphic. The second graphic shows the sequence view annotated by issues in geometry and electron density. Residues are color-coded according to the number of geometric quality criteria for which they contain at least one outlier: green = 0, yellow = 1, orange = 2 and red = 3 or more. A red dot above a residue indicates a poor fit to the electron density ($RSRZ > 2$). Stretches of 2 or more consecutive residues without any outlier are shown as a green connector. Residues present in the sample, but not in the model, are shown in grey.

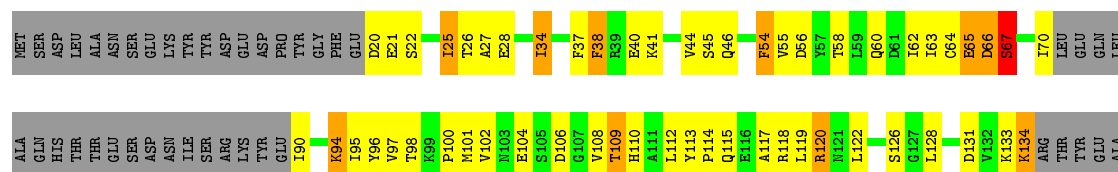
- Molecule 1: DNA-directed RNA polymerase II subunit RPB1

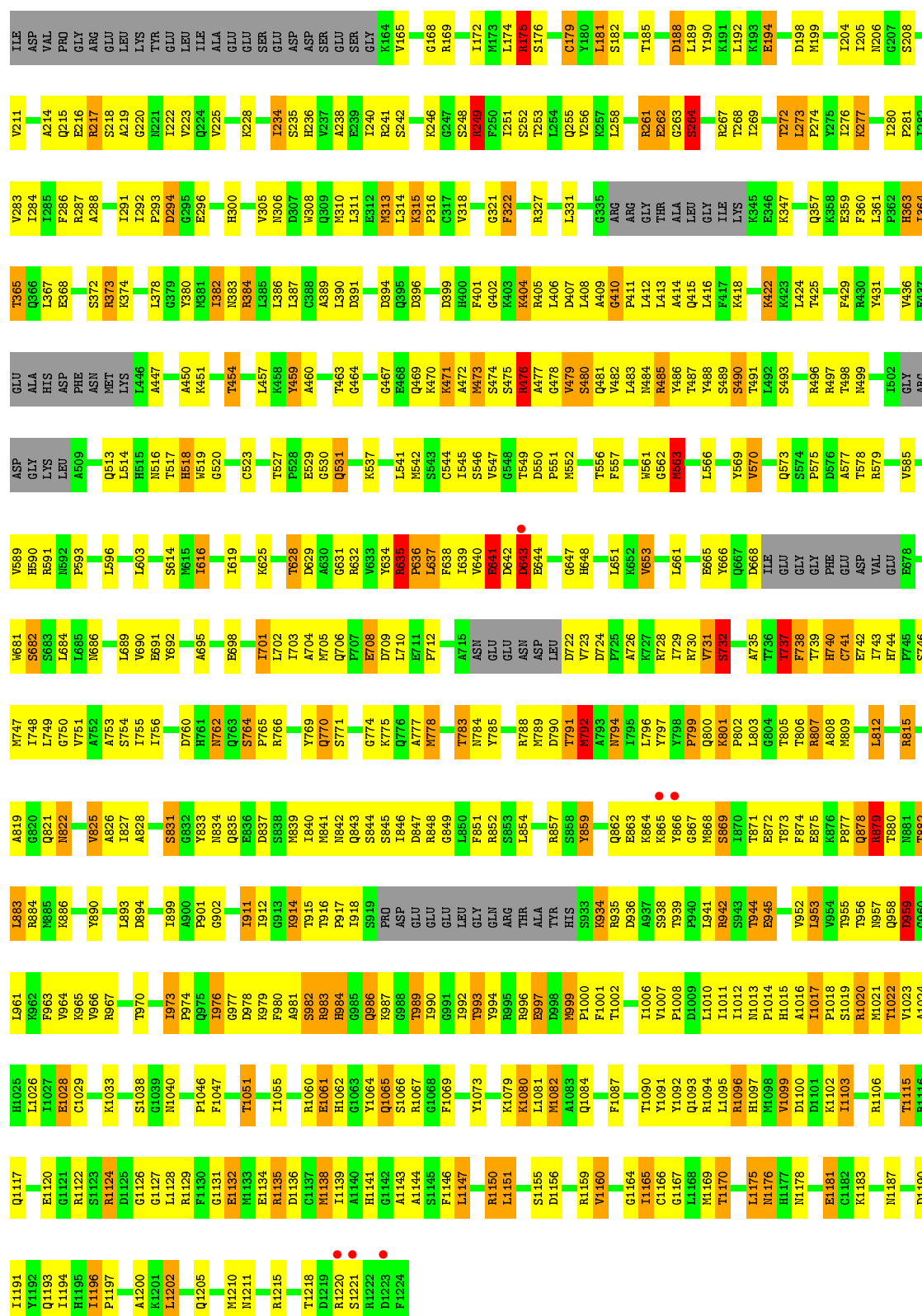


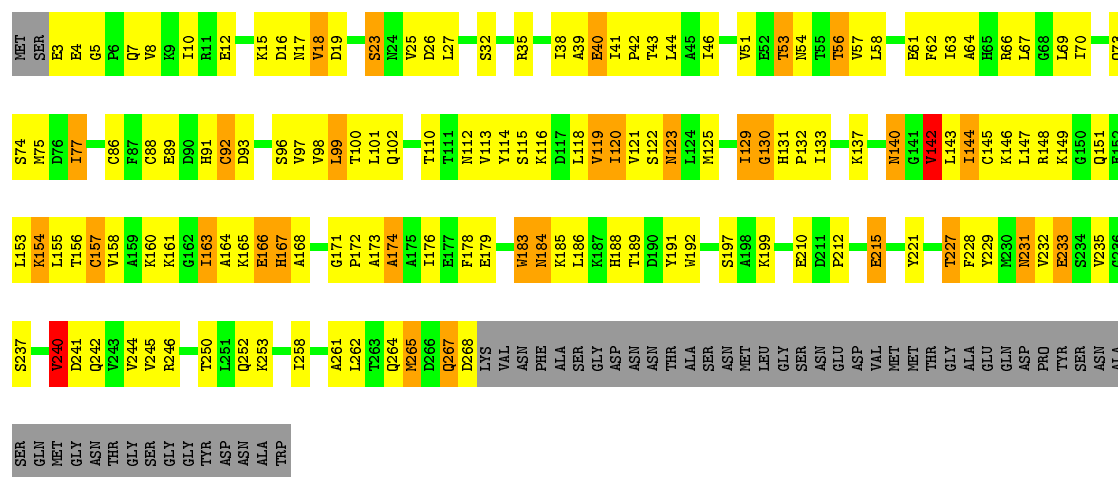


• Molecule 2: DNA-directed RNA polymerase II subunit RPB2

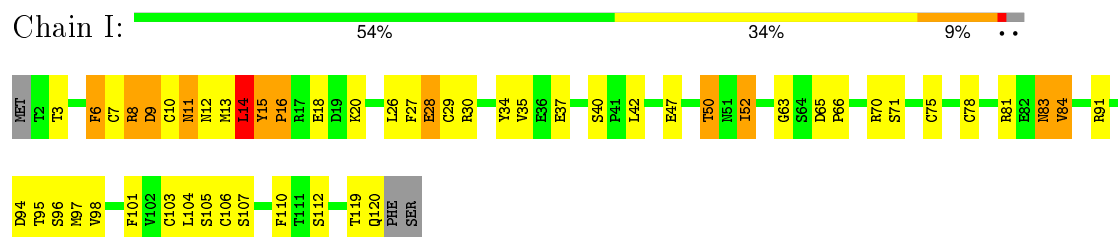
Chain B: 41% 38% 10% 10%



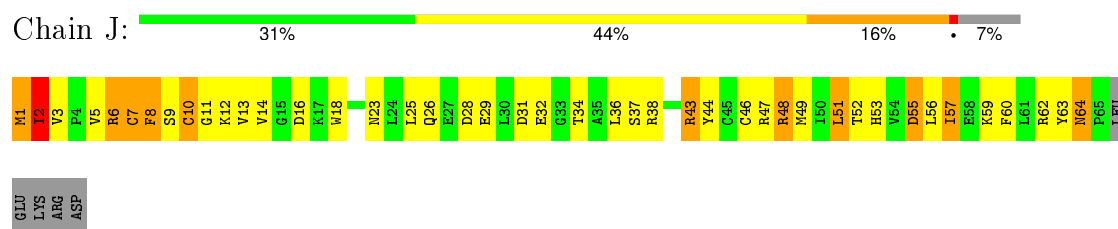




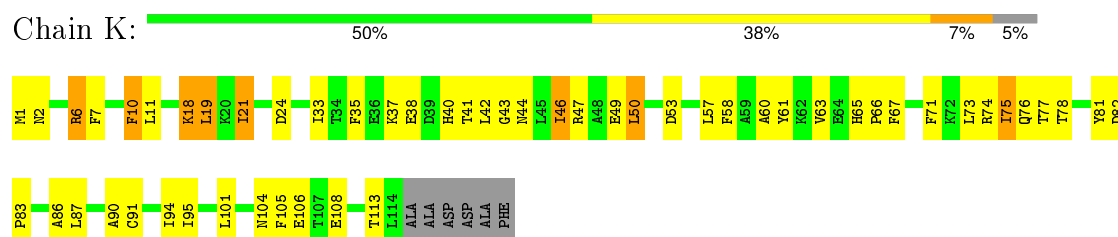
- Molecule 7: DNA-directed RNA polymerase II subunit RPB9



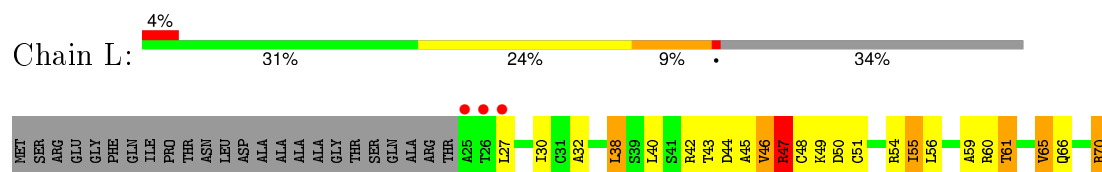
- Molecule 8: DNA-directed RNA polymerases I, II, and III subunit RPABC5



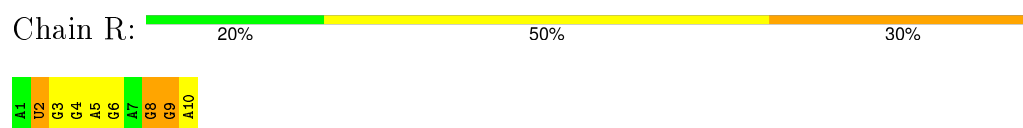
- Molecule 9: DNA-directed RNA polymerase II subunit RPB11



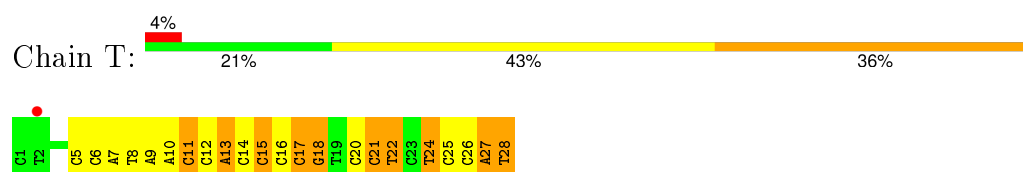
- Molecule 10: DNA-directed RNA polymerases I, II, and III subunit RPABC4



- Molecule 11: RNA (5'-R(*AP*UP*GP*GP*AP*GP*AP*GP*GP*A)-3')



- Molecule 12: DNA (28-MER)



- Molecule 13: DNA (5'-D(P*GP*TP*GP*GP*TP*TP*AP*TP*GP*GP*GP*TP*AP*G)-3')

Chain N:  57% 36% 7%



4 Data and refinement statistics

Property	Value	Source
Space group	C 1 2 1	Depositor
Cell constants a, b, c, α , β , γ	168.11Å 222.13Å 191.78Å 90.00° 100.99° 90.00°	Depositor
Resolution (Å)	40.00 – 3.57 39.79 – 3.57	Depositor EDS
% Data completeness (in resolution range)	90.5 (40.00-3.57) 90.5 (39.79-3.57)	Depositor EDS
R_{merge}	(Not available)	Depositor
R_{sym}	0.17	Depositor
$\langle I/\sigma(I) \rangle$ ¹	1.94 (at 3.57Å)	Xtriage
Refinement program	REFMAC 5.5.0102	Depositor
R, R_{free}	0.241 , 0.292 0.248 , 0.292	Depositor DCC
R_{free} test set	3681 reflections (5.23%)	DCC
Wilson B-factor (Å ²)	85.0	Xtriage
Anisotropy	0.269	Xtriage
Bulk solvent k_{sol} (e/Å ³), B_{sol} (Å ²)	0.26 , 100.6	EDS
Estimated twinning fraction	No twinning to report.	Xtriage
L-test for twinning ²	$\langle L \rangle = 0.45$, $\langle L^2 \rangle = 0.28$	Xtriage
Outliers	0 of 74021 reflections	Xtriage
F_o, F_c correlation	0.89	EDS
Total number of atoms	29227	wwPDB-VP
Average B, all atoms (Å ²)	130.0	wwPDB-VP

Xtriage's analysis on translational NCS is as follows: *The largest off-origin peak in the Patterson function is 3.03% of the height of the origin peak. No significant pseudotranslation is detected.*

¹Intensities estimated from amplitudes.

²Theoretical values of $\langle |L| \rangle$, $\langle L^2 \rangle$ for acentric reflections are 0.5, 0.375 respectively for untwinned datasets, and 0.333, 0.2 for perfectly twinned datasets.

5 Model quality ⓘ

5.1 Standard geometry ⓘ

Bond lengths and bond angles in the following residue types are not validated in this section: C7P, ZN, MG

The Z score for a bond length (or angle) is the number of standard deviations the observed value is removed from the expected value. A bond length (or angle) with $|Z| > 5$ is considered an outlier worth inspection. RMSZ is the root-mean-square of all Z scores of the bond lengths (or angles).

Mol	Chain	Bond lengths		Bond angles	
		RMSZ	# $ Z > 5$	RMSZ	# $ Z > 5$
1	A	0.56	0/11163	0.75	5/15091 (0.0%)
2	B	0.64	1/8963 (0.0%)	0.78	3/12086 (0.0%)
3	C	0.59	0/2133	0.74	0/2891
4	E	0.49	0/1788	0.66	1/2406 (0.0%)
5	F	0.51	0/691	0.76	0/933
6	H	0.47	0/1086	0.76	0/1470
7	I	0.55	0/989	0.76	1/1331 (0.1%)
8	J	0.66	0/541	0.88	1/727 (0.1%)
9	K	0.57	0/937	0.72	0/1265
10	L	0.59	0/365	0.87	0/485
11	R	0.71	0/248	1.27	2/387 (0.5%)
12	T	1.06	3/615 (0.5%)	2.00	23/941 (2.4%)
13	N	0.74	0/332	1.31	1/513 (0.2%)
All	All	0.60	4/29851 (0.0%)	0.83	37/40526 (0.1%)

Chiral center outliers are detected by calculating the chiral volume of a chiral center and verifying if the center is modelled as a planar moiety or with the opposite hand. A planarity outlier is detected by checking planarity of atoms in a peptide group, atoms in a mainchain group or atoms of a sidechain that are expected to be planar.

Mol	Chain	#Chirality outliers	#Planarity outliers
1	A	0	1
6	H	0	2
All	All	0	3

All (4) bond length outliers are listed below:

Mol	Chain	Res	Type	Atoms	Z	Observed(Å)	Ideal(Å)
12	T	18	DG	C8-N7	7.66	1.35	1.30
12	T	18	DG	C6-N1	-6.66	1.34	1.39
12	T	18	DG	N7-C5	-5.70	1.35	1.39

Continued on next page...

Continued from previous page...

Mol	Chain	Res	Type	Atoms	Z	Observed(Å)	Ideal(Å)
2	B	1029	CYS	CB-SG	-5.32	1.73	1.81

The worst 5 of 37 bond angle outliers are listed below:

Mol	Chain	Res	Type	Atoms	Z	Observed(°)	Ideal(°)
12	T	18	DG	N3-C4-C5	-18.97	119.12	128.60
12	T	18	DG	C2-N3-C4	16.08	119.94	111.90
12	T	18	DG	C5-C6-N1	13.88	118.44	111.50
12	T	18	DG	N3-C4-N9	12.76	133.65	126.00
12	T	18	DG	C5-C6-O6	-10.72	122.17	128.60

There are no chirality outliers.

All (3) planarity outliers are listed below:

Mol	Chain	Res	Type	Group
1	A	1172	LEU	Peptide
6	H	136	LYS	Peptide
6	H	82	PRO	Peptide

5.2 Too-close contacts [i](#)

In the following table, the Non-H and H(model) columns list the number of non-hydrogen atoms and hydrogen atoms in the chain respectively. The H(added) column lists the number of hydrogen atoms added and optimized by MolProbity. The Clashes column lists the number of clashes within the asymmetric unit, whereas Symm-Clashes lists symmetry related clashes.

Mol	Chain	Non-H	H(model)	H(added)	Clashes	Symm-Clashes
1	A	10969	0	11071	670	0
2	B	8792	0	8824	560	0
3	C	2095	0	2052	152	0
4	E	1752	0	1776	70	0
5	F	679	0	701	31	0
6	H	1068	0	1040	63	0
7	I	971	0	929	33	0
8	J	532	0	543	62	0
9	K	919	0	929	54	0
10	L	363	0	387	18	0
11	R	220	0	110	12	0
12	T	553	0	315	24	0
13	N	296	0	160	3	0
14	A	2	0	0	0	0

Continued on next page...

Continued from previous page...

Mol	Chain	Non-H	H(model)	H(added)	Clashes	Symm-Clashes
14	B	1	0	0	0	0
14	C	1	0	0	0	0
14	I	2	0	0	0	0
14	J	1	0	0	0	0
14	L	1	0	0	0	0
15	T	9	0	5	5	0
16	A	1	0	0	0	0
All	All	29227	0	28842	1570	0

The all-atom clashscore is defined as the number of clashes found per 1000 atoms (including hydrogen atoms). The all-atom clashscore for this structure is 27.

The worst 5 of 1570 close contacts within the same asymmetric unit are listed below, sorted by their clash magnitude.

Atom-1	Atom-2	Interatomic distance (Å)	Clash overlap (Å)
1:A:30:ILE:HG12	2:B:1170:THR:HG21	1.31	1.13
1:A:567:LYS:CB	1:A:568:PRO:HD2	1.79	1.10
1:A:567:LYS:HB2	1:A:568:PRO:CD	1.82	1.09
1:A:315:LEU:HB2	1:A:316:GLN:HA	1.18	1.08
5:F:93:ILE:HD11	5:F:134:ILE:HD11	1.14	1.07

There are no symmetry-related clashes.

5.3 Torsion angles [i](#)

5.3.1 Protein backbone [i](#)

In the following table, the Percentiles column shows the percent Ramachandran outliers of the chain as a percentile score with respect to all X-ray entries followed by that with respect to entries of similar resolution.

The Analysed column shows the number of residues for which the backbone conformation was analysed, and the total number of residues.

Mol	Chain	Analysed	Favoured	Allowed	Outliers	Percentiles	
1	A	1383/1733 (80%)	1080 (78%)	219 (16%)	84 (6%)	2	24
2	B	1088/1224 (89%)	855 (79%)	169 (16%)	64 (6%)	2	25
3	C	264/318 (83%)	213 (81%)	38 (14%)	13 (5%)	3	29
4	E	212/215 (99%)	178 (84%)	25 (12%)	9 (4%)	3	34

Continued on next page...

Continued from previous page...

Mol	Chain	Analysed	Favoured	Allowed	Outliers	Percentiles	
5	F	82/155 (53%)	65 (79%)	13 (16%)	4 (5%)	3	29
6	H	129/146 (88%)	97 (75%)	19 (15%)	13 (10%)	1	11
7	I	117/122 (96%)	87 (74%)	21 (18%)	9 (8%)	1	16
8	J	63/70 (90%)	54 (86%)	5 (8%)	4 (6%)	2	23
9	K	112/120 (93%)	94 (84%)	15 (13%)	3 (3%)	6	46
10	L	44/70 (63%)	26 (59%)	14 (32%)	4 (9%)	1	13
All	All	3494/4173 (84%)	2749 (79%)	538 (15%)	207 (6%)	2	25

5 of 207 Ramachandran outliers are listed below:

Mol	Chain	Res	Type
1	A	54	ASN
1	A	56	PRO
1	A	57	ARG
1	A	93	VAL
1	A	130	ASP

5.3.2 Protein sidechains ⓘ

In the following table, the Percentiles column shows the percent sidechain outliers of the chain as a percentile score with respect to all X-ray entries followed by that with respect to entries of similar resolution.

The Analysed column shows the number of residues for which the sidechain conformation was analysed, and the total number of residues.

Mol	Chain	Analysed	Rotameric	Outliers	Percentiles	
1	A	1218/1520 (80%)	1012 (83%)	206 (17%)	2	18
2	B	960/1061 (90%)	776 (81%)	184 (19%)	2	12
3	C	234/274 (85%)	198 (85%)	36 (15%)	3	23
4	E	196/197 (100%)	175 (89%)	21 (11%)	8	40
5	F	74/137 (54%)	58 (78%)	16 (22%)	1	9
6	H	117/128 (91%)	101 (86%)	16 (14%)	4	28
7	I	113/116 (97%)	95 (84%)	18 (16%)	3	21
8	J	60/65 (92%)	45 (75%)	15 (25%)	1	6
9	K	99/102 (97%)	87 (88%)	12 (12%)	6	33
10	L	40/57 (70%)	26 (65%)	14 (35%)	0	2

Continued on next page...

Continued from previous page...

Mol	Chain	Analysed	Rotameric	Outliers	Percentiles
All	All	3111/3657 (85%)	2573 (83%)	538 (17%)	2 17

5 of 538 residues with a non-rotameric sidechain are listed below:

Mol	Chain	Res	Type
2	B	268	THR
2	B	653	VAL
8	J	1	MET
2	B	306	ASN
2	B	459	TYR

Some sidechains can be flipped to improve hydrogen bonding and reduce clashes. 5 of 94 such sidechains are listed below:

Mol	Chain	Res	Type
2	B	366	GLN
2	B	740	HIS
6	H	33	GLN
2	B	383	ASN
2	B	518	HIS

5.3.3 RNA ⓘ

Mol	Chain	Analysed	Backbone Outliers	Pucker Outliers
11	R	9/10 (90%)	2 (22%)	0

All (2) RNA backbone outliers are listed below:

Mol	Chain	Res	Type
11	R	2	U
11	R	9	G

There are no RNA pucker outliers to report.

5.4 Non-standard residues in protein, DNA, RNA chains ⓘ

There are no non-standard protein/DNA/RNA residues in this entry.

5.5 Carbohydrates

There are no carbohydrates in this entry.

5.6 Ligand geometry

Of 10 ligands modelled in this entry, 9 are monoatomic - leaving 1 for Mogul analysis.

In the following table, the Counts columns list the number of bonds (or angles) for which Mogul statistics could be retrieved, the number of bonds (or angles) that are observed in the model and the number of bonds (or angles) that are defined in the chemical component dictionary. The Link column lists molecule types, if any, to which the group is linked. The Z score for a bond length (or angle) is the number of standard deviations the observed value is removed from the expected value. A bond length (or angle) with $|Z| > 2$ is considered an outlier worth inspection. RMSZ is the root-mean-square of all Z scores of the bond lengths (or angles).

Mol	Type	Chain	Res	Link	Bond lengths			Bond angles		
					Counts	RMSZ	$\# Z > 2$	Counts	RMSZ	$\# Z > 2$
15	C7P	T	29	12	5,9,10	2.36	1 (20%)	3,11,14	2.18	1 (33%)

In the following table, the Chirals column lists the number of chiral outliers, the number of chiral centers analysed, the number of these observed in the model and the number defined in the chemical component dictionary. Similar counts are reported in the Torsion and Rings columns. '-' means no outliers of that kind were identified.

Mol	Type	Chain	Res	Link	Chirals	Torsions	Rings
15	C7P	T	29	12	-	0/0/12/14	0/1/1/1

All (1) bond length outliers are listed below:

Mol	Chain	Res	Type	Atoms	Z	Observed(Å)	Ideal(Å)
15	T	29	C7P	C1-C2	-4.72	1.40	1.49

All (1) bond angle outliers are listed below:

Mol	Chain	Res	Type	Atoms	Z	Observed(°)	Ideal(°)
15	T	29	C7P	C2-C1-N1	3.51	120.77	111.33

There are no chirality outliers.

There are no torsion outliers.

There are no ring outliers.

1 monomer is involved in 5 short contacts:

Mol	Chain	Res	Type	Clashes	Symm-Clashes
15	T	29	C7P	5	0

5.7 Other polymers [i](#)

There are no such residues in this entry.

5.8 Polymer linkage issues [i](#)

There are no chain breaks in this entry.

6 Fit of model and data ⓘ

6.1 Protein, DNA and RNA chains ⓘ

In the following table, the column labelled ‘#RSRZ> 2’ contains the number (and percentage) of RSRZ outliers, followed by percent RSRZ outliers for the chain as percentile scores relative to all X-ray entries and entries of similar resolution. The OWAB column contains the minimum, median, 95th percentile and maximum values of the occupancy-weighted average B-factor per residue. The column labelled ‘Q< 0.9’ lists the number of (and percentage) of residues with an average occupancy less than 0.9.

Mol	Chain	Analysed	<RSRZ>	#RSRZ>2	OWAB(Å ²)	Q<0.9
1	A	1395/1733 (80%)	-0.34	19 (1%) 78 69	50, 115, 229, 315	0
2	B	1106/1224 (90%)	-0.45	6 (0%) 91 88	50, 103, 169, 240	0
3	C	266/318 (83%)	-0.51	0 100 100	69, 105, 142, 159	0
4	E	214/215 (99%)	-0.11	4 (1%) 70 60	91, 175, 245, 258	0
5	F	84/155 (54%)	-0.30	0 100 100	88, 118, 148, 152	0
6	H	133/146 (91%)	-0.14	1 (0%) 87 81	117, 162, 209, 217	0
7	I	119/122 (97%)	-0.20	0 100 100	104, 143, 186, 208	0
8	J	65/70 (92%)	-0.64	0 100 100	67, 86, 118, 130	0
9	K	114/120 (95%)	-0.50	0 100 100	67, 109, 139, 151	0
10	L	46/70 (65%)	0.01	3 (6%) 22 16	78, 155, 178, 185	0
11	R	10/10 (100%)	0.74	0 100 100	183, 210, 307, 319	0
12	T	28/28 (100%)	0.70	1 (3%) 46 37	199, 326, 403, 414	0
13	N	14/14 (100%)	0.50	0 100 100	313, 367, 380, 399	0
All	All	3594/4225 (85%)	-0.35	34 (0%) 85 79	50, 116, 220, 414	0

The worst 5 of 34 RSRZ outliers are listed below:

Mol	Chain	Res	Type	RSRZ
1	A	1176	LEU	8.3
1	A	44	THR	4.4
1	A	149	GLU	4.2
1	A	286	HIS	4.1
2	B	866	TYR	3.6

6.2 Non-standard residues in protein, DNA, RNA chains ⓘ

There are no non-standard protein/DNA/RNA residues in this entry.

6.3 Carbohydrates [i](#)

There are no carbohydrates in this entry.

6.4 Ligands [i](#)

In the following table, the Atoms column lists the number of modelled atoms in the group and the number defined in the chemical component dictionary. LLDF column lists the quality of electron density of the group with respect to its neighbouring residues in protein, DNA or RNA chains. The B-factors column lists the minimum, median, 95th percentile and maximum values of B factors of atoms in the group. The column labelled 'Q< 0.9' lists the number of atoms with occupancy less than 0.9.

Mol	Type	Chain	Res	Atoms	RSCC	RSR	LLDF	B-factors(\AA^2)	Q<0.9
15	C7P	T	29	9/10	0.89	0.34	1.41	314,324,360,369	1
16	MG	A	2001	1/1	0.99	0.16	0.00	9,9,9,9	0
14	ZN	B	1307	1/1	0.98	0.10	-1.08	95,95,95,95	1
14	ZN	I	203	1/1	0.98	0.08	-1.32	81,81,81,81	0
14	ZN	J	101	1/1	0.97	0.16	-1.40	87,87,87,87	1
14	ZN	A	1734	1/1	0.93	0.05	-1.71	90,90,90,90	1
14	ZN	I	204	1/1	0.99	0.03	-2.47	81,81,81,81	1
14	ZN	A	1735	1/1	0.97	0.08	-3.34	103,103,103,103	1
14	ZN	C	319	1/1	0.97	0.03	-3.54	83,83,83,83	0
14	ZN	L	105	1/1	0.94	0.05	-3.94	106,106,106,106	1

6.5 Other polymers [i](#)

There are no such residues in this entry.