



Full wwPDB X-ray Structure Validation Report ⓘ

Jan 31, 2016 – 08:51 PM GMT

PDB ID : 1MB2
Title : Crystal Structure of Tryptophanyl-tRNA Synthetase Complexed with Tryptophan in an Open Conformation
Authors : Retailleau, P.; Huang, X.; Yin, Y.; Hu, M.; Weinreb, V.; Vachette, P.; Vonrhein, C.; Bricogne, G.; Roversi, P.; Ilyin, V.; Carter Jr., C.W.
Deposited on : 2002-08-02
Resolution : 2.70 Å(reported)

This is a Full wwPDB X-ray Structure Validation Report for a publicly released PDB entry.
We welcome your comments at validation@mail.wwpdb.org
A user guide is available at
<http://wwpdb.org/validation/2016/XrayValidationReportHelp>
with specific help available everywhere you see the ⓘ symbol.

The following versions of software and data (see [references ⓘ](#)) were used in the production of this report:

MolProbity : 4.02b-467
Mogul : 1.7 (RC4), CSD as536be (2015)
Xtriage (Phenix) : 1.9-1692
EDS : rb-20026688
Percentile statistics : 20151230.v01 (using entries in the PDB archive December 30th 2015)
Refmac : 5.8.0135
CCP4 : 6.5.0
Ideal geometry (proteins) : Engh & Huber (2001)
Ideal geometry (DNA, RNA) : Parkinson et al. (1996)
Validation Pipeline (wwPDB-VP) : trunk26865

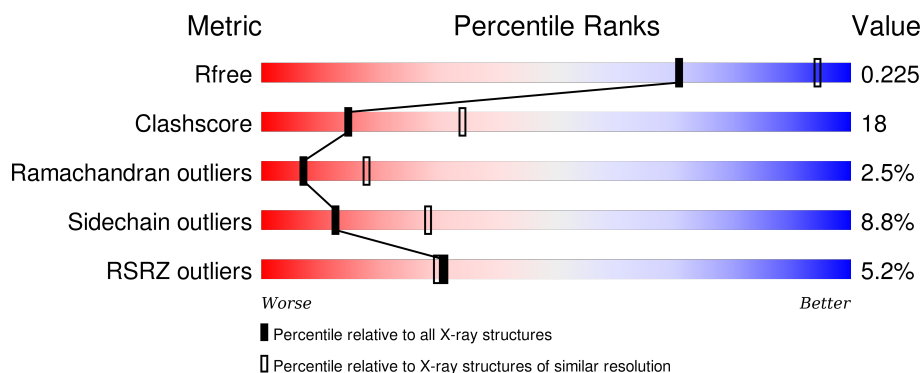
1 Overall quality at a glance

The following experimental techniques were used to determine the structure:

X-RAY DIFFRACTION

The reported resolution of this entry is 2.70 Å.

Percentile scores (ranging between 0-100) for global validation metrics of the entry are shown in the following graphic. The table shows the number of entries on which the scores are based.



Metric	Whole archive (#Entries)	Similar resolution (#Entries, resolution range(Å))
R_{free}	91344	2103 (2.70-2.70)
Clashscore	102246	2422 (2.70-2.70)
Ramachandran outliers	100387	2382 (2.70-2.70)
Sidechain outliers	100360	2382 (2.70-2.70)
RSRZ outliers	91569	2107 (2.70-2.70)

The table below summarises the geometric issues observed across the polymeric chains and their fit to the electron density. The red, orange, yellow and green segments on the lower bar indicate the fraction of residues that contain outliers for ≥ 3 , 2, 1 and 0 types of geometric quality criteria. A grey segment represents the fraction of residues that are not modelled. The numeric value for each fraction is indicated below the corresponding segment, with a dot representing fractions $\leq 5\%$. The upper red bar (where present) indicates the fraction of residues that have poor fit to the electron density. The numeric value is given above the bar.

Mol	Chain	Length	Quality of chain
1	A	328	<div> <div>5%</div> <div> <div></div> <div>57%</div> <div>40%</div> <div>..</div> </div> </div>
1	B	328	<div> <div>5%</div> <div> <div></div> <div>65%</div> <div>30%</div> <div>..</div> </div> </div>
1	C	328	<div> <div>4%</div> <div> <div></div> <div>57%</div> <div>39%</div> <div>..</div> </div> </div>
1	D	328	<div> <div>6%</div> <div> <div></div> <div>62%</div> <div>33%</div> <div>..</div> </div> </div>
1	E	328	<div> <div>5%</div> <div> <div></div> <div>62%</div> <div>32%</div> <div>5%</div> <div>.</div> </div> </div>

Continued on next page...

Continued from previous page...

Mol	Chain	Length	Quality of chain
1	F	328	

The following table lists non-polymeric compounds, carbohydrate monomers and non-standard residues in protein, DNA, RNA chains that are outliers for geometric or electron-density-fit criteria:

Mol	Type	Chain	Res	Chirality	Geometry	Clashes	Electron density
2	TRP	A	400	-	-	-	X
2	TRP	B	401	-	-	-	X
2	TRP	D	403	-	-	-	X
2	TRP	F	405	-	-	-	X

2 Entry composition [i](#)

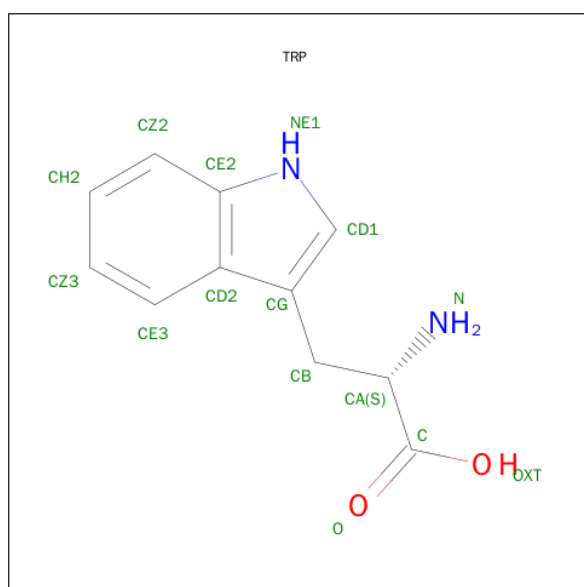
There are 2 unique types of molecules in this entry. The entry contains 15468 atoms, of which 0 are hydrogens and 0 are deuteriums.

In the tables below, the ZeroOcc column contains the number of atoms modelled with zero occupancy, the AltConf column contains the number of residues with at least one atom in alternate conformation and the Trace column contains the number of residues modelled with at most 2 atoms.

- Molecule 1 is a protein called TRYPTOPHAN-TRNA LIGASE.

Mol	Chain	Residues	Atoms					ZeroOcc	AltConf	Trace
1	A	326	Total	C	N	O	S	0	0	0
			2563	1624	442	484	13			
1	B	326	Total	C	N	O	S	0	0	0
			2563	1624	442	484	13			
1	C	326	Total	C	N	O	S	0	0	0
			2563	1624	442	484	13			
1	D	326	Total	C	N	O	S	0	0	0
			2563	1624	442	484	13			
1	E	326	Total	C	N	O	S	0	0	0
			2563	1624	442	484	13			
1	F	326	Total	C	N	O	S	0	0	0
			2563	1624	442	484	13			

- Molecule 2 is TRYPTOPHAN (three-letter code: TRP) (formula: $C_{11}H_{12}N_2O_2$).

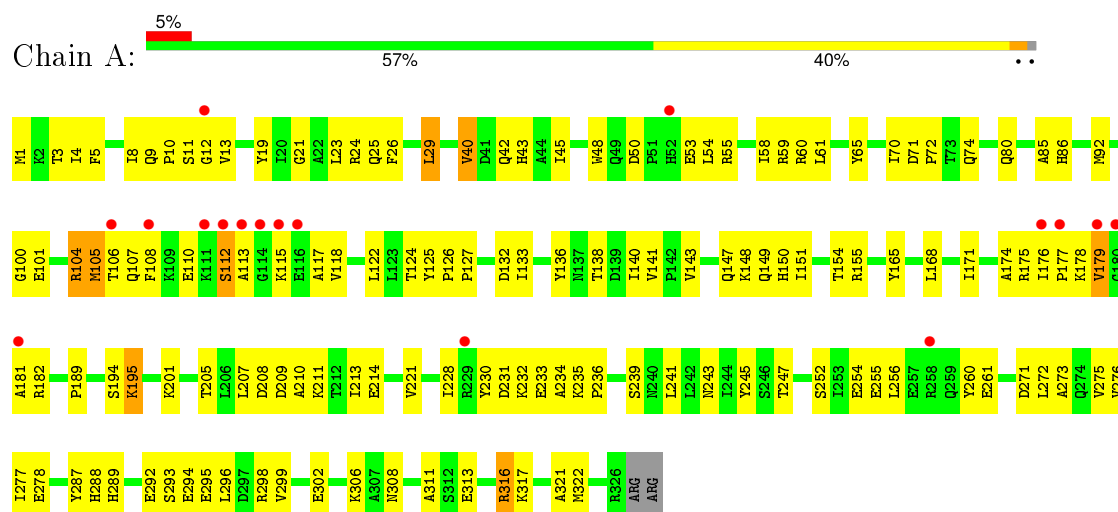


Mol	Chain	Residues	Atoms				ZeroOcc	AltConf
2	A	1	Total	C	N	O	0	0
			15	11	2	2		
2	B	1	Total	C	N	O	0	0
			15	11	2	2		
2	C	1	Total	C	N	O	0	0
			15	11	2	2		
2	D	1	Total	C	N	O	0	0
			15	11	2	2		
2	E	1	Total	C	N	O	0	0
			15	11	2	2		
2	F	1	Total	C	N	O	0	0
			15	11	2	2		

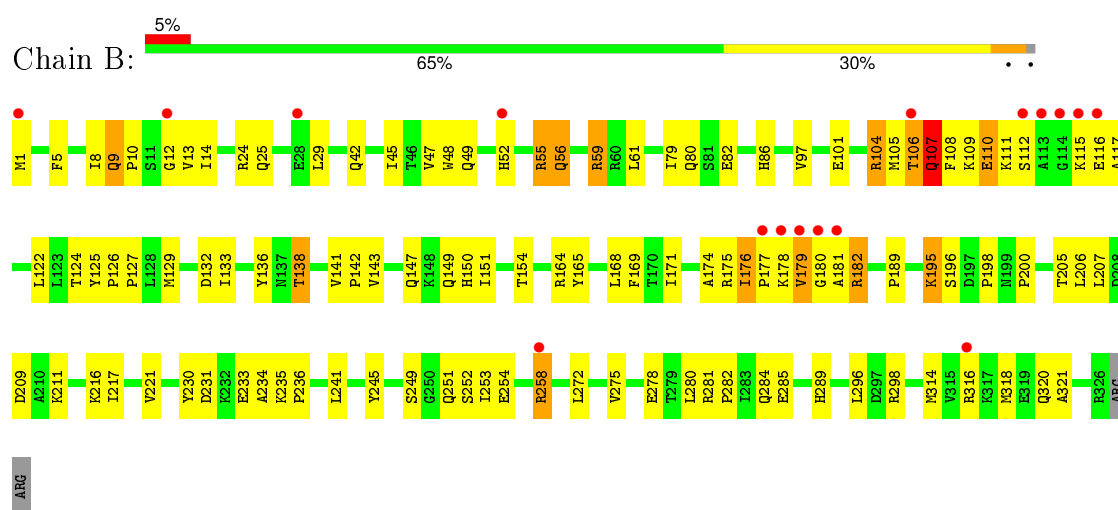
3 Residue-property plots

These plots are drawn for all protein, RNA and DNA chains in the entry. The first graphic for a chain summarises the proportions of errors displayed in the second graphic. The second graphic shows the sequence view annotated by issues in geometry and electron density. Residues are color-coded according to the number of geometric quality criteria for which they contain at least one outlier: green = 0, yellow = 1, orange = 2 and red = 3 or more. A red dot above a residue indicates a poor fit to the electron density ($RSRZ > 2$). Stretches of 2 or more consecutive residues without any outlier are shown as a green connector. Residues present in the sample, but not in the model, are shown in grey.

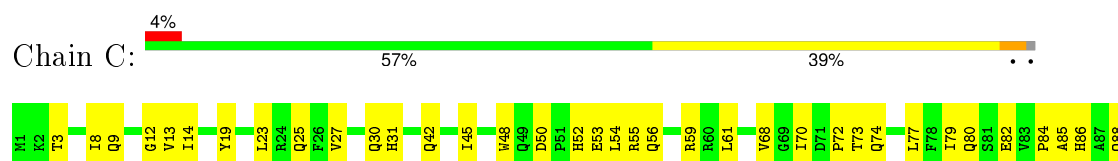
• Molecule 1: TRYPTOPHAN-TRNA LIGASE

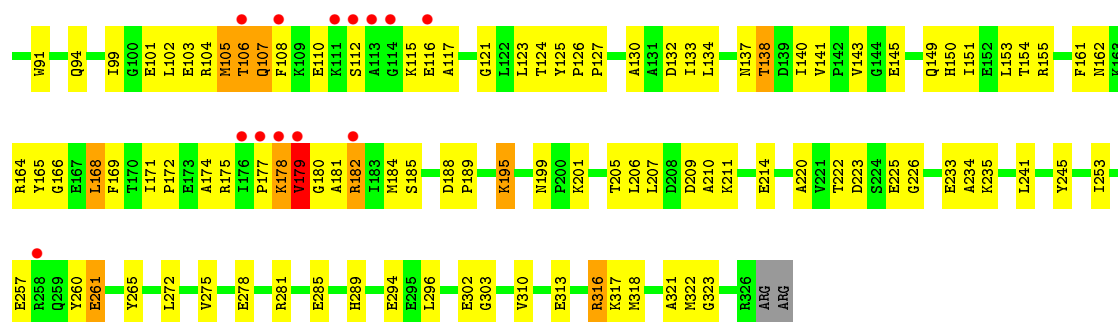


• Molecule 1: TRYPTOPHAN-TRNA LIGASE

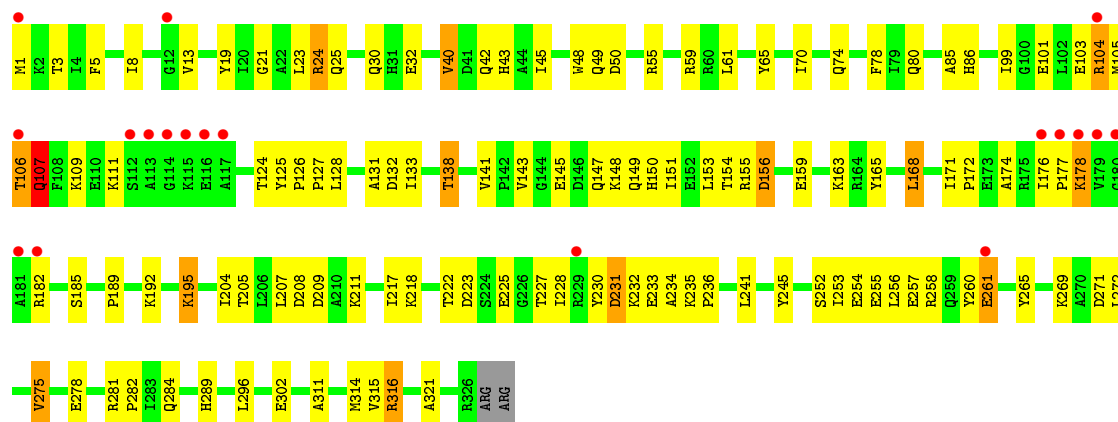


• Molecule 1: TRYPTOPHAN-TRNA LIGASE

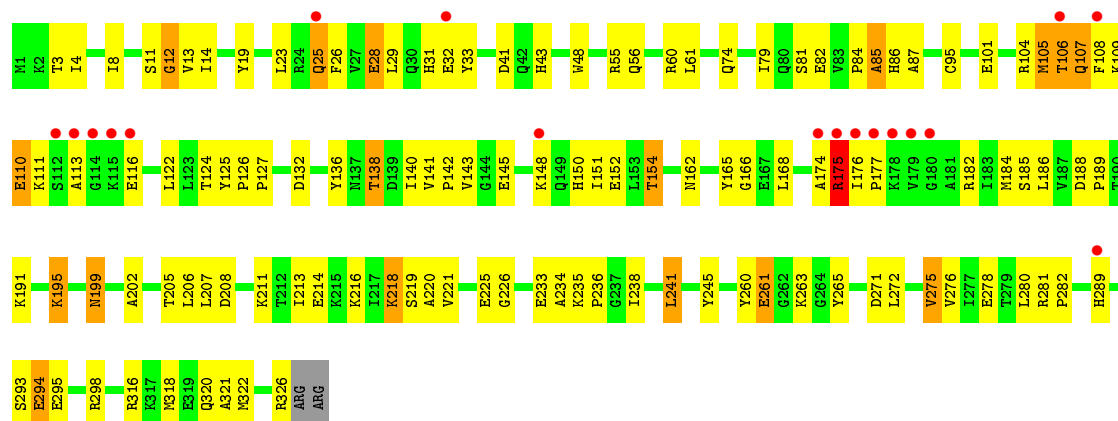




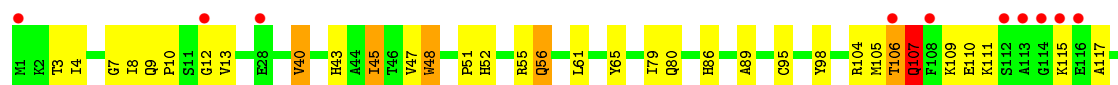
• Molecule 1: TRYPTOPHAN-TRNA LIGASE

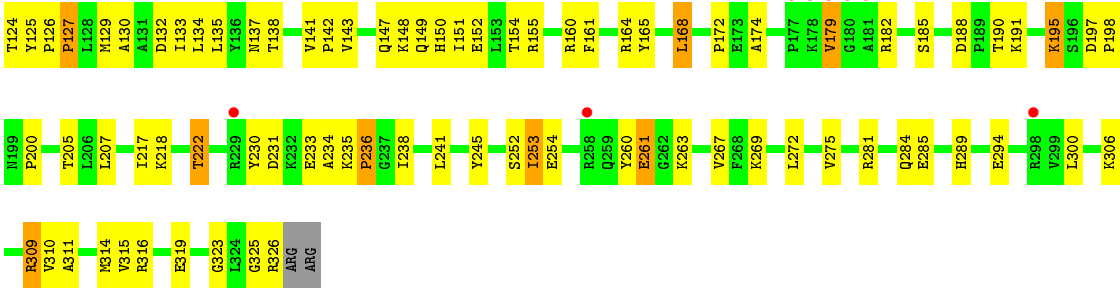


• Molecule 1: TRYPTOPHAN-TRNA LIGASE



• Molecule 1: TRYPTOPHAN-TRNA LIGASE





4 Data and refinement statistics

Property	Value	Source
Space group	C 1 2 1	Depositor
Cell constants a, b, c, α , β , γ	228.73 Å 92.24 Å 157.59 Å 90.00° 132.71° 90.00°	Depositor
Resolution (Å)	14.98 – 2.70 15.02 – 2.58	Depositor EDS
% Data completeness (in resolution range)	83.9 (14.98-2.70) 78.0 (15.02-2.58)	Depositor EDS
R_{merge}	(Not available)	Depositor
R_{sym}	0.07	Depositor
$\langle I/\sigma(I) \rangle$ ¹	1.74 (at 2.58 Å)	Xtriage
Refinement program	CNS 1.1	Depositor
R, R_{free}	0.220 , 0.254 0.194 , 0.225	Depositor DCC
R_{free} test set	No test flags present.	DCC
Wilson B-factor (Å ²)	43.2	Xtriage
Anisotropy	0.239	Xtriage
Bulk solvent k_{sol} (e/Å ³), B_{sol} (Å ²)	0.32 , 75.2	EDS
Estimated twinning fraction	0.012 for -h-2*k,l,-k,l	Xtriage
L-test for twinning ²	$\langle L \rangle = 0.48$, $\langle L^2 \rangle = 0.31$	Xtriage
Outliers	0 of 58669 reflections	Xtriage
F_o, F_c correlation	0.93	EDS
Total number of atoms	15468	wwPDB-VP
Average B, all atoms (Å ²)	47.0	wwPDB-VP

Xtriage's analysis on translational NCS is as follows: *The analyses of the Patterson function reveals a significant off-origin peak that is 25.69 % of the origin peak, indicating pseudo translational symmetry. The chance of finding a peak of this or larger height randomly in a structure without pseudo translational symmetry is equal to 3.0244e-03. The detected translational NCS is most likely also responsible for the elevated intensity ratio.*

¹ Intensities estimated from amplitudes.

² Theoretical values of $\langle |L| \rangle$, $\langle L^2 \rangle$ for acentric reflections are 0.5, 0.375 respectively for untwinned datasets, and 0.333, 0.2 for perfectly twinned datasets.

5 Model quality [i](#)

5.1 Standard geometry [i](#)

The Z score for a bond length (or angle) is the number of standard deviations the observed value is removed from the expected value. A bond length (or angle) with $|Z| > 5$ is considered an outlier worth inspection. RMSZ is the root-mean-square of all Z scores of the bond lengths (or angles).

Mol	Chain	Bond lengths		Bond angles	
		RMSZ	# Z >5	RMSZ	# Z >5
1	A	0.44	0/2611	0.69	0/3532
1	B	0.42	0/2611	0.69	0/3532
1	C	0.45	0/2611	0.70	0/3532
1	D	0.43	0/2611	0.68	0/3532
1	E	0.47	0/2611	0.69	1/3532 (0.0%)
1	F	0.43	0/2611	0.67	0/3532
All	All	0.44	0/15666	0.69	1/21192 (0.0%)

There are no bond length outliers.

All (1) bond angle outliers are listed below:

Mol	Chain	Res	Type	Atoms	Z	Observed(°)	Ideal(°)
1	E	12	GLY	N-CA-C	5.59	127.08	113.10

There are no chirality outliers.

There are no planarity outliers.

5.2 Too-close contacts [i](#)

In the following table, the Non-H and H(model) columns list the number of non-hydrogen atoms and hydrogen atoms in the chain respectively. The H(added) column lists the number of hydrogen atoms added and optimized by MolProbity. The Clashes column lists the number of clashes within the asymmetric unit, whereas Symm-Clashes lists symmetry related clashes.

Mol	Chain	Non-H	H(model)	H(added)	Clashes	Symm-Clashes
1	A	2563	0	2554	100	0
1	B	2563	0	2554	92	0
1	C	2563	0	2554	93	0
1	D	2563	0	2554	107	0
1	E	2563	0	2554	85	0
1	F	2563	0	2554	86	0

Continued on next page...

Continued from previous page...

Mol	Chain	Non-H	H(model)	H(added)	Clashes	Symm-Clashes
2	A	15	0	9	0	0
2	B	15	0	9	3	0
2	C	15	0	9	0	0
2	D	15	0	9	1	0
2	E	15	0	9	0	0
2	F	15	0	9	2	0
All	All	15468	0	15378	548	0

The all-atom clashscore is defined as the number of clashes found per 1000 atoms (including hydrogen atoms). The all-atom clashscore for this structure is 18.

All (548) close contacts within the same asymmetric unit are listed below, sorted by their clash magnitude.

Atom-1	Atom-2	Interatomic distance (Å)	Clash overlap (Å)
1:C:205:THR:HG22	1:C:207:LEU:H	1.25	0.97
1:A:195:LYS:HD2	1:A:195:LYS:H	1.31	0.94
1:F:205:THR:HG22	1:F:207:LEU:H	1.32	0.93
1:A:5:PHE:HB2	1:A:138:THR:HG21	1.49	0.92
1:C:86:HIS:HD2	1:C:132:ASP:OD1	1.54	0.91
1:F:195:LYS:HD2	1:F:195:LYS:H	1.35	0.90
1:E:86:HIS:HD2	1:E:132:ASP:OD1	1.54	0.89
1:F:126:PRO:HB2	1:F:127:PRO:HD3	1.53	0.88
1:D:205:THR:HG22	1:D:207:LEU:H	1.37	0.88
1:C:145:GLU:CD	1:C:145:GLU:H	1.77	0.88
1:D:195:LYS:H	1:D:195:LYS:HD2	1.38	0.87
1:A:151:ILE:HG21	1:A:174:ALA:HB2	1.56	0.87
1:D:106:THR:H	1:D:149:GLN:HE22	1.24	0.84
1:B:176:ILE:HB	1:B:177:PRO:CD	2.07	0.84
1:B:205:THR:HG22	1:B:207:LEU:H	1.40	0.84
1:D:176:ILE:HG23	1:D:177:PRO:HD2	1.58	0.84
1:A:92:MET:HG2	1:A:322:MET:CE	2.09	0.82
1:D:5:PHE:HB2	1:D:138:THR:HG21	1.61	0.82
1:C:184:MET:HG3	1:C:189:PRO:O	1.82	0.80
1:B:281:ARG:O	1:B:285:GLU:HG3	1.81	0.80
1:B:25:GLN:OE1	1:B:178:LYS:HE2	1.82	0.79
1:C:195:LYS:HD2	1:C:195:LYS:H	1.46	0.79
1:A:205:THR:HG22	1:A:207:LEU:H	1.48	0.78
1:F:309:ARG:HH11	1:F:310:VAL:HG23	1.49	0.78
1:D:106:THR:N	1:D:149:GLN:HE22	1.81	0.77
1:A:125:TYR:CD2	1:A:126:PRO:HD3	2.19	0.77
1:C:133:ILE:HD13	1:C:141:VAL:HG21	1.66	0.77

Continued on next page...

Continued from previous page...

Atom-1	Atom-2	Interatomic distance (Å)	Clash overlap (Å)
1:D:124:THR:O	1:D:127:PRO:HD2	1.83	0.77
1:A:124:THR:O	1:A:127:PRO:HD2	1.84	0.76
1:E:188:ASP:OD2	1:E:191:LYS:HB2	1.85	0.76
1:E:205:THR:HG22	1:E:207:LEU:H	1.50	0.76
1:C:150:HIS:O	1:C:154:THR:HG23	1.86	0.75
1:D:59:ARG:NH2	1:D:296:LEU:HD23	2.00	0.75
1:B:29:LEU:HD21	1:B:175:ARG:HH22	1.51	0.75
1:E:205:THR:HB	1:E:208:ASP:OD1	1.87	0.75
1:F:195:LYS:H	1:F:195:LYS:CD	1.99	0.74
1:A:195:LYS:CD	1:A:195:LYS:H	1.95	0.74
1:B:177:PRO:O	1:B:178:LYS:HB2	1.88	0.73
1:A:86:HIS:HD2	1:A:132:ASP:OD1	1.72	0.72
1:B:82:GLU:OE2	1:E:326:ARG:HD3	1.90	0.72
1:D:106:THR:H	1:D:149:GLN:NE2	1.88	0.72
1:E:195:LYS:H	1:E:195:LYS:HD2	1.55	0.71
1:B:198:PRO:O	1:B:200:PRO:HD3	1.90	0.71
1:D:271:ASP:O	1:D:275:VAL:HG12	1.90	0.71
1:E:25:GLN:NE2	1:E:29:LEU:HD13	2.06	0.71
1:C:54:LEU:HD23	1:F:323:GLY:O	1.91	0.71
1:B:86:HIS:HD2	1:B:132:ASP:OD1	1.73	0.71
1:A:195:LYS:N	1:A:195:LYS:HD2	2.05	0.70
1:C:151:ILE:HG21	1:C:174:ALA:HB2	1.73	0.70
1:A:231:ASP:HB3	1:A:235:LYS:HB2	1.72	0.70
1:D:176:ILE:HG23	1:D:177:PRO:CD	2.22	0.70
1:E:25:GLN:O	1:E:29:LEU:HB2	1.92	0.70
1:A:181:ALA:O	1:A:182:ARG:HB2	1.90	0.70
1:B:126:PRO:HB2	1:B:127:PRO:HD3	1.74	0.70
1:E:195:LYS:N	1:E:195:LYS:HD2	2.07	0.70
1:C:165:TYR:HB3	1:C:321:ALA:HB1	1.74	0.70
1:F:106:THR:H	1:F:149:GLN:HE22	1.38	0.69
1:B:124:THR:HG21	1:E:124:THR:HG21	1.74	0.69
1:F:179:VAL:O	1:F:179:VAL:HG12	1.92	0.69
1:B:234:ALA:C	1:B:236:PRO:HD3	2.12	0.69
1:A:92:MET:HG2	1:A:322:MET:HE1	1.75	0.68
1:D:195:LYS:HD2	1:D:195:LYS:N	2.09	0.68
1:E:3:THR:HB	1:E:138:THR:HA	1.75	0.68
1:C:14:ILE:HD11	1:C:206:LEU:HD12	1.74	0.68
1:D:55:ARG:HG2	1:D:55:ARG:HH11	1.58	0.68
1:C:195:LYS:CD	1:C:195:LYS:H	2.06	0.68
1:B:143:VAL:HB	1:B:147:GLN:HB2	1.75	0.68
1:E:126:PRO:HB2	1:E:127:PRO:HD3	1.74	0.68

Continued on next page...

Continued from previous page...

Atom-1	Atom-2	Interatomic distance (Å)	Clash overlap (Å)
1:A:21:GLY:O	1:A:179:VAL:HG22	1.93	0.68
1:E:195:LYS:CD	1:E:195:LYS:H	2.07	0.67
1:F:272:LEU:O	1:F:275:VAL:HG12	1.94	0.67
1:C:105:MET:HA	1:C:149:GLN:HE22	1.59	0.66
1:A:92:MET:HG2	1:A:322:MET:HE2	1.78	0.66
1:C:323:GLY:HA2	1:F:55:ARG:HE	1.59	0.66
1:A:55:ARG:HG2	1:A:55:ARG:HH11	1.60	0.66
1:D:254:GLU:H	1:D:254:GLU:CD	1.99	0.66
1:A:4:ILE:HG12	1:A:140:ILE:HB	1.78	0.66
1:F:150:HIS:O	1:F:154:THR:HG23	1.95	0.65
1:D:13:VAL:O	1:D:13:VAL:HG22	1.96	0.65
1:F:86:HIS:HD2	1:F:132:ASP:OD1	1.80	0.65
1:D:86:HIS:HD2	1:D:132:ASP:OD1	1.80	0.65
1:F:55:ARG:HH11	1:F:55:ARG:HG2	1.62	0.64
1:F:185:SER:HB3	1:F:188:ASP:O	1.97	0.64
1:D:143:VAL:HB	1:D:147:GLN:HB2	1.80	0.64
1:C:27:VAL:O	1:C:30:GLN:HG2	1.97	0.64
1:C:126:PRO:HB2	1:C:127:PRO:HD3	1.79	0.64
1:F:10:PRO:HA	1:F:61:LEU:HD22	1.78	0.63
1:E:101:GLU:O	1:E:104:ARG:HG2	1.98	0.63
1:C:86:HIS:CD2	1:C:132:ASP:OD1	2.44	0.63
1:B:29:LEU:HD21	1:B:175:ARG:NH2	2.13	0.63
1:E:184:MET:HG3	1:E:189:PRO:O	1.98	0.63
1:A:176:ILE:HG23	1:A:177:PRO:HD2	1.80	0.63
1:B:179:VAL:HG12	1:B:180:GLY:H	1.62	0.63
1:D:165:TYR:HB3	1:D:321:ALA:HB1	1.81	0.63
1:A:150:HIS:O	1:A:154:THR:HG23	1.98	0.62
1:C:55:ARG:HE	1:F:323:GLY:HA2	1.63	0.62
1:B:141:VAL:HG12	1:B:143:VAL:HG13	1.81	0.62
1:A:25:GLN:OE1	1:A:178:LYS:HD2	1.98	0.62
1:A:165:TYR:HB3	1:A:321:ALA:HB1	1.81	0.62
1:F:309:ARG:HH11	1:F:310:VAL:CG2	2.13	0.62
1:A:272:LEU:HA	1:A:275:VAL:HG12	1.81	0.62
1:D:85:ALA:HB3	1:D:311:ALA:HB1	1.82	0.62
1:C:31:HIS:ND1	1:C:74:GLN:HG2	2.15	0.62
1:F:309:ARG:NH1	1:F:310:VAL:HG23	2.14	0.62
1:A:233:GLU:O	1:A:234:ALA:HB3	1.99	0.62
1:B:176:ILE:HB	1:B:177:PRO:HD2	1.82	0.62
1:E:162:ASN:HA	1:E:166:GLY:O	2.00	0.62
1:C:225:GLU:OE1	1:C:235:LYS:NZ	2.23	0.62
1:B:25:GLN:HG3	1:B:29:LEU:HD13	1.82	0.61

Continued on next page...

Continued from previous page...

Atom-1	Atom-2	Interatomic distance (Å)	Clash overlap (Å)
1:E:165:TYR:HB3	1:E:321:ALA:HB1	1.80	0.61
1:B:195:LYS:N	1:B:195:LYS:HD2	2.15	0.61
1:E:141:VAL:HG12	1:E:143:VAL:HG13	1.82	0.61
1:C:178:LYS:HE3	1:C:179:VAL:HG22	1.83	0.61
1:E:140:ILE:HG21	1:E:175:ARG:HG3	1.83	0.61
1:C:3:THR:HB	1:C:138:THR:HA	1.82	0.60
1:D:133:ILE:O	1:D:138:THR:HG23	2.02	0.60
1:B:195:LYS:CD	1:B:195:LYS:H	2.13	0.60
1:A:254:GLU:H	1:A:254:GLU:CD	2.05	0.60
1:B:195:LYS:H	1:B:195:LYS:HD2	1.67	0.60
1:B:5:PHE:HB2	1:B:138:THR:HG21	1.83	0.60
1:C:91:TRP:O	1:C:94:GLN:HB2	2.02	0.59
1:E:214:GLU:O	1:E:218:LYS:HG3	2.02	0.59
1:A:29:LEU:HD21	1:A:175:ARG:HH12	1.66	0.59
1:E:140:ILE:CG2	1:E:175:ARG:HG3	2.33	0.59
1:E:11:SER:O	1:E:13:VAL:HG12	2.02	0.59
1:D:205:THR:N	1:D:208:ASP:OD2	2.30	0.59
1:B:47:VAL:O	1:B:49:GLN:HG2	2.03	0.59
1:A:228:ILE:HG13	1:A:260:TYR:HB3	1.85	0.59
1:B:258:ARG:HE	1:B:258:ARG:HA	1.68	0.58
1:C:8:ILE:CG2	1:C:61:LEU:HD21	2.33	0.58
1:B:106:THR:H	1:B:149:GLN:HE22	1.52	0.58
1:A:140:ILE:HG23	1:A:175:ARG:HB2	1.86	0.58
1:F:217:ILE:O	1:F:269:LYS:HD3	2.04	0.58
1:C:133:ILE:O	1:C:138:THR:HG23	2.04	0.57
1:B:230:TYR:CD2	1:B:253:ILE:HD13	2.39	0.57
1:C:85:ALA:HA	1:C:88:GLN:OE1	2.04	0.57
1:E:86:HIS:CD2	1:E:132:ASP:OD1	2.47	0.57
1:F:306:LYS:HA	1:F:309:ARG:NE	2.19	0.57
1:B:179:VAL:HG12	1:B:180:GLY:N	2.20	0.57
1:D:105:MET:HA	1:D:149:GLN:HE22	1.69	0.57
1:E:272:LEU:O	1:E:276:VAL:HG23	2.05	0.57
1:A:8:ILE:CG2	1:A:61:LEU:HD21	2.34	0.57
1:D:150:HIS:O	1:D:154:THR:HG23	2.04	0.57
1:B:55:ARG:HH11	1:B:55:ARG:HG2	1.70	0.57
1:D:3:THR:HB	1:D:138:THR:HA	1.87	0.57
1:D:195:LYS:CD	1:D:195:LYS:H	2.00	0.57
1:F:8:ILE:HG22	1:F:61:LEU:HD21	1.86	0.57
1:A:24:ARG:HH12	1:A:247:THR:HB	1.70	0.57
1:F:306:LYS:O	1:F:309:ARG:NH1	2.38	0.56
1:F:109:LYS:C	1:F:111:LYS:H	2.09	0.56

Continued on next page...

Continued from previous page...

Atom-1	Atom-2	Interatomic distance (Å)	Clash overlap (Å)
1:A:288:HIS:O	1:A:292:GLU:HG2	2.04	0.56
1:D:65:TYR:O	1:D:70:ILE:HG12	2.04	0.56
1:A:176:ILE:HG23	1:A:177:PRO:CD	2.34	0.56
1:C:155:ARG:NH1	1:C:172:PRO:O	2.38	0.56
1:F:233:GLU:O	1:F:234:ALA:HB3	2.06	0.56
1:D:42:GLN:HB2	1:D:80:GLN:OE1	2.05	0.56
1:D:231:ASP:CB	1:D:235:LYS:HB2	2.35	0.56
1:F:98:TYR:CE2	1:F:160:ARG:NH1	2.73	0.56
1:C:205:THR:HG22	1:C:207:LEU:N	2.09	0.56
1:E:23:LEU:HA	1:E:26:PHE:HD2	1.70	0.56
1:B:8:ILE:HG22	1:B:61:LEU:HD21	1.88	0.56
1:A:230:TYR:CE2	1:A:239:SER:HB3	2.40	0.56
1:E:32:GLU:HG3	1:E:33:TYR:CD1	2.40	0.56
1:B:235:LYS:N	1:B:236:PRO:HD3	2.21	0.56
1:F:129:MET:HG3	2:F:405:TRP:CD1	2.41	0.56
1:D:151:ILE:O	1:D:155:ARG:HG3	2.06	0.56
1:D:231:ASP:HB3	1:D:235:LYS:HB2	1.87	0.56
1:C:211:LYS:HB3	1:C:211:LYS:NZ	2.21	0.56
1:C:195:LYS:HD2	1:C:195:LYS:N	2.19	0.55
1:B:231:ASP:HB3	1:B:235:LYS:HB2	1.88	0.55
1:B:133:ILE:O	1:B:138:THR:HG23	2.07	0.55
1:F:272:LEU:HD12	1:F:275:VAL:CG1	2.36	0.55
1:C:102:LEU:O	1:C:105:MET:HB2	2.07	0.55
1:B:14:ILE:HG13	1:B:14:ILE:O	2.05	0.55
1:C:124:THR:HG21	1:F:124:THR:HG21	1.87	0.55
1:D:233:GLU:O	1:D:234:ALA:HB3	2.07	0.55
1:A:50:ASP:HB3	1:A:53:GLU:HB2	1.88	0.55
1:C:226:GLY:HA2	1:C:265:TYR:CZ	2.42	0.55
1:B:233:GLU:O	1:B:234:ALA:HB3	2.07	0.55
1:D:86:HIS:CD2	1:D:132:ASP:OD1	2.59	0.55
1:E:225:GLU:OE1	1:E:235:LYS:NZ	2.35	0.55
1:E:41:ASP:OD2	1:E:81:SER:OG	2.18	0.55
1:D:228:ILE:HD13	1:D:265:TYR:CE1	2.41	0.55
1:D:182:ARG:CZ	1:D:192:LYS:HD3	2.37	0.55
1:F:195:LYS:N	1:F:195:LYS:HD2	2.14	0.55
1:B:14:ILE:HD11	1:B:206:LEU:HD12	1.89	0.55
1:F:198:PRO:O	1:F:200:PRO:HD3	2.08	0.54
1:A:141:VAL:HG12	1:A:143:VAL:HG13	1.89	0.54
1:B:211:LYS:HB3	1:B:211:LYS:NZ	2.21	0.54
1:A:86:HIS:HE1	1:A:136:TYR:OH	1.90	0.54
1:E:101:GLU:HA	1:E:104:ARG:HH11	1.73	0.54

Continued on next page...

Continued from previous page...

Atom-1	Atom-2	Interatomic distance (Å)	Clash overlap (Å)
1:C:211:LYS:HZ3	1:C:211:LYS:HB3	1.72	0.54
1:B:280:LEU:O	1:B:284:GLN:HG3	2.07	0.54
1:A:85:ALA:HB3	1:A:311:ALA:HB1	1.90	0.54
1:C:99:ILE:O	1:C:103:GLU:HG3	2.08	0.54
1:D:189:PRO:HB2	1:D:236:PRO:HB2	1.88	0.54
1:B:177:PRO:C	1:B:179:VAL:H	2.11	0.54
1:F:52:HIS:O	1:F:56:GLN:HB2	2.08	0.54
1:E:136:TYR:HB2	1:E:138:THR:HG22	1.90	0.53
1:B:181:ALA:O	1:B:182:ARG:C	2.46	0.53
1:C:253:ILE:O	1:C:257:GLU:HG3	2.08	0.53
1:F:125:TYR:N	1:F:126:PRO:CD	2.71	0.53
1:A:211:LYS:HB3	1:A:211:LYS:NZ	2.22	0.53
1:E:176:ILE:HG13	1:E:177:PRO:HD2	1.90	0.53
1:D:21:GLY:O	1:D:177:PRO:HB3	2.08	0.53
1:A:316:ARG:HA	1:A:316:ARG:NH1	2.23	0.53
1:D:40:VAL:O	1:D:40:VAL:HG23	2.08	0.53
1:A:295:GLU:O	1:A:299:VAL:HG23	2.09	0.53
1:D:126:PRO:HB2	1:D:127:PRO:HD3	1.90	0.53
1:F:149:GLN:O	1:F:149:GLN:HG2	2.07	0.53
1:D:105:MET:HA	1:D:149:GLN:NE2	2.24	0.53
1:D:43:HIS:HD2	1:D:125:TYR:HB2	1.75	0.53
1:E:176:ILE:HG13	1:E:177:PRO:CD	2.39	0.53
1:E:79:ILE:HB	1:E:82:GLU:HG3	1.91	0.53
1:C:184:MET:CG	1:C:189:PRO:O	2.54	0.52
1:F:309:ARG:NH1	1:F:310:VAL:CG2	2.72	0.52
1:E:43:HIS:HE1	1:E:132:ASP:OD2	1.93	0.52
1:C:59:ARG:NH2	1:C:296:LEU:HD23	2.25	0.52
1:D:43:HIS:CD2	1:D:125:TYR:HB2	2.44	0.52
1:E:150:HIS:O	1:E:154:THR:CG2	2.57	0.52
1:C:55:ARG:HG2	1:C:55:ARG:HH11	1.73	0.52
1:C:108:PHE:CZ	1:C:123:LEU:HD13	2.44	0.52
1:D:8:ILE:CG2	1:D:61:LEU:HD21	2.40	0.52
1:C:145:GLU:CD	1:C:145:GLU:N	2.54	0.52
1:C:42:GLN:OE1	1:C:80:GLN:HG2	2.10	0.52
1:B:272:LEU:HA	1:B:275:VAL:HG12	1.91	0.52
1:C:108:PHE:C	1:C:110:GLU:N	2.61	0.52
1:F:161:PHE:HE2	1:F:168:LEU:HD12	1.74	0.51
1:F:234:ALA:O	1:F:236:PRO:HD3	2.11	0.51
1:F:89:ALA:HB2	1:F:135:LEU:HD21	1.92	0.51
1:F:13:VAL:O	1:F:13:VAL:HG13	2.11	0.51
1:F:155:ARG:NH1	1:F:172:PRO:O	2.42	0.51

Continued on next page...

Continued from previous page...

Atom-1	Atom-2	Interatomic distance (Å)	Clash overlap (Å)
1:D:228:ILE:HD13	1:D:265:TYR:HE1	1.73	0.51
1:C:281:ARG:O	1:C:285:GLU:HG3	2.09	0.51
1:F:45:ILE:O	1:F:45:ILE:HG23	2.11	0.51
1:C:105:MET:O	1:C:107:GLN:N	2.44	0.51
1:A:40:VAL:HG23	1:A:40:VAL:O	2.11	0.51
1:A:143:VAL:HB	1:A:147:GLN:HB2	1.92	0.50
1:D:316:ARG:HA	1:D:316:ARG:NH1	2.25	0.50
1:F:252:SER:HB2	1:F:254:GLU:OE1	2.11	0.50
1:F:8:ILE:HD12	1:F:65:TYR:OH	2.12	0.50
1:A:59:ARG:NH2	1:A:296:LEU:HD23	2.27	0.50
1:C:13:VAL:O	1:C:13:VAL:HG13	2.11	0.50
1:C:108:PHE:C	1:C:110:GLU:H	2.14	0.50
1:F:141:VAL:HG12	1:F:143:VAL:HG13	1.93	0.50
1:F:143:VAL:HB	1:F:147:GLN:HB2	1.93	0.50
1:D:258:ARG:NH2	1:D:261:GLU:OE1	2.45	0.50
1:D:125:TYR:CD2	1:D:126:PRO:HD3	2.47	0.50
1:C:140:ILE:HG23	1:C:175:ARG:HB2	1.93	0.50
1:B:165:TYR:HB3	1:B:321:ALA:HB1	1.94	0.50
1:B:125:TYR:N	1:B:126:PRO:CD	2.74	0.49
1:A:260:TYR:OH	1:A:271:ASP:OD2	2.24	0.49
1:F:105:MET:O	1:F:107:GLN:N	2.45	0.49
1:A:245:TYR:CD2	1:A:272:LEU:HD13	2.46	0.49
1:D:155:ARG:NH1	1:D:172:PRO:O	2.45	0.49
1:D:252:SER:OG	1:D:255:GLU:HB2	2.12	0.49
1:B:107:GLN:C	1:B:109:LYS:H	2.16	0.49
1:C:141:VAL:HG12	1:C:143:VAL:HG13	1.93	0.49
1:E:233:GLU:O	1:E:234:ALA:HB3	2.13	0.49
1:A:302:GLU:O	1:A:306:LYS:HG3	2.11	0.49
1:A:100:GLY:O	1:A:104:ARG:HG2	2.12	0.49
1:E:4:ILE:HG23	1:E:142:PRO:HD3	1.95	0.49
1:D:55:ARG:HG2	1:D:55:ARG:NH1	2.25	0.49
1:A:3:THR:HB	1:A:138:THR:HA	1.95	0.49
1:D:103:GLU:C	1:D:105:MET:H	2.16	0.49
1:F:309:ARG:HD3	1:F:310:VAL:HG23	1.94	0.49
1:D:228:ILE:HD11	1:D:265:TYR:HD1	1.77	0.49
1:C:272:LEU:O	1:C:275:VAL:HG12	2.13	0.49
1:A:108:PHE:HZ	1:D:99:ILE:HD13	1.78	0.49
1:A:189:PRO:HD3	1:A:221:VAL:CG2	2.42	0.49
1:A:126:PRO:HB2	1:A:127:PRO:HD3	1.95	0.49
1:C:323:GLY:HA2	1:F:55:ARG:NE	2.27	0.49
1:A:43:HIS:HE1	1:A:132:ASP:OD2	1.95	0.49

Continued on next page...

Continued from previous page...

Atom-1	Atom-2	Interatomic distance (Å)	Clash overlap (Å)
1:A:25:GLN:O	1:A:29:LEU:HD12	2.13	0.49
1:A:151:ILE:O	1:A:155:ARG:HG3	2.13	0.48
1:D:223:ASP:OD2	1:D:235:LYS:HG2	2.12	0.48
1:C:55:ARG:HG2	1:C:55:ARG:NH1	2.29	0.48
1:A:181:ALA:O	1:A:182:ARG:CB	2.61	0.48
1:A:189:PRO:HD3	1:A:221:VAL:HG21	1.94	0.48
1:A:272:LEU:HA	1:A:275:VAL:CG1	2.42	0.48
1:A:40:VAL:HA	1:A:80:GLN:HB2	1.95	0.48
1:F:230:TYR:CD2	1:F:253:ILE:HD13	2.48	0.48
1:F:315:VAL:HG12	1:F:319:GLU:OE2	2.13	0.48
1:B:115:LYS:O	1:B:117:ALA:N	2.47	0.48
1:B:281:ARG:N	1:B:282:PRO:HD2	2.29	0.48
1:F:51:PRO:O	1:F:55:ARG:HB2	2.12	0.48
1:D:40:VAL:HA	1:D:80:GLN:HB2	1.95	0.48
1:F:115:LYS:C	1:F:117:ALA:H	2.16	0.48
1:B:59:ARG:CZ	1:B:296:LEU:HD23	2.44	0.48
1:D:223:ASP:CG	1:D:235:LYS:HZ2	2.16	0.48
1:B:45:ILE:CG2	1:E:95:CYS:SG	3.01	0.48
1:F:207:LEU:HA	1:F:284:GLN:HE21	1.78	0.48
1:E:151:ILE:HG21	1:E:174:ALA:HB2	1.96	0.48
1:A:23:LEU:HA	1:A:26:PHE:HD1	1.77	0.48
1:B:9:GLN:NE2	1:B:10:PRO:HD2	2.29	0.48
1:F:126:PRO:HB2	1:F:127:PRO:CD	2.34	0.48
1:C:14:ILE:HD11	1:C:206:LEU:CD1	2.44	0.48
1:B:105:MET:HA	1:B:149:GLN:HE22	1.78	0.48
1:D:211:LYS:HB3	1:D:211:LYS:NZ	2.29	0.48
1:C:225:GLU:HB3	1:C:235:LYS:NZ	2.29	0.48
1:D:225:GLU:O	1:D:227:THR:HG23	2.14	0.48
1:D:230:TYR:HE1	1:D:232:LYS:HG2	1.78	0.48
1:A:245:TYR:CE1	1:A:256:LEU:HD21	2.49	0.48
1:C:82:GLU:O	1:C:84:PRO:HD3	2.14	0.48
1:E:109:LYS:C	1:E:111:LYS:H	2.16	0.48
1:C:171:ILE:N	1:C:171:ILE:CD1	2.77	0.48
1:C:101:GLU:HA	1:C:104:ARG:HH11	1.78	0.47
1:A:133:ILE:HD13	1:A:141:VAL:HG21	1.95	0.47
1:D:19:TYR:HA	1:D:23:LEU:HB2	1.95	0.47
1:A:292:GLU:HG3	1:A:293:SER:N	2.30	0.47
1:B:209:ASP:OD1	1:B:211:LYS:HB3	2.14	0.47
1:E:19:TYR:HA	1:E:23:LEU:HB3	1.96	0.47
1:F:79:ILE:HD11	1:F:300:LEU:HD13	1.96	0.47
1:A:205:THR:N	1:A:208:ASP:OD2	2.34	0.47

Continued on next page...

Continued from previous page...

Atom-1	Atom-2	Interatomic distance (Å)	Clash overlap (Å)
1:F:179:VAL:HG13	1:F:182:ARG:HG3	1.95	0.47
1:A:42:GLN:O	1:A:45:ILE:HG22	2.15	0.47
1:B:45:ILE:HG23	1:E:95:CYS:SG	2.55	0.47
1:C:171:ILE:HD12	1:C:171:ILE:N	2.29	0.47
1:D:159:GLU:O	1:D:163:LYS:HG3	2.15	0.47
1:F:222:THR:HG22	1:F:238:ILE:HG12	1.97	0.47
1:D:45:ILE:HD12	1:D:49:GLN:HG3	1.96	0.47
1:A:122:LEU:O	1:A:125:TYR:HD2	1.98	0.47
1:D:217:ILE:HD12	1:D:272:LEU:HD23	1.96	0.46
1:C:169:PHE:HZ	1:C:318:MET:SD	2.38	0.46
1:D:176:ILE:CG2	1:D:177:PRO:N	2.77	0.46
1:C:19:TYR:HE2	1:C:68:VAL:HG13	1.80	0.46
1:F:263:LYS:HB3	1:F:267:VAL:HG21	1.97	0.46
1:D:5:PHE:HB2	1:D:138:THR:CG2	2.41	0.46
1:E:125:TYR:N	1:E:126:PRO:CD	2.79	0.46
1:D:141:VAL:HG12	1:D:143:VAL:HG13	1.97	0.46
1:E:185:SER:HB2	1:E:202:ALA:HB1	1.97	0.46
1:A:5:PHE:HB2	1:A:138:THR:CG2	2.34	0.46
1:E:25:GLN:HE21	1:E:29:LEU:HD13	1.77	0.46
1:B:171:ILE:HD12	1:B:171:ILE:N	2.31	0.46
1:E:150:HIS:O	1:E:154:THR:HG22	2.15	0.46
1:F:191:LYS:NZ	1:F:197:ASP:OD2	2.48	0.46
1:C:25:GLN:HE22	1:C:177:PRO:HB3	1.81	0.46
1:A:19:TYR:HA	1:A:23:LEU:HB3	1.98	0.46
1:C:161:PHE:HE2	1:C:168:LEU:HD12	1.81	0.46
1:E:241:LEU:HD12	1:E:241:LEU:HA	1.85	0.46
1:A:313:GLU:HG3	1:A:317:LYS:NZ	2.30	0.46
1:B:126:PRO:O	1:B:129:MET:N	2.45	0.46
1:E:234:ALA:C	1:E:236:PRO:HD3	2.35	0.46
1:F:7:GLY:N	2:F:405:TRP:CH2	2.84	0.46
1:B:115:LYS:C	1:B:117:ALA:H	2.18	0.46
1:C:222:THR:OG1	1:C:223:ASP:N	2.49	0.46
1:D:218:LYS:HA	1:D:269:LYS:HD3	1.98	0.46
1:E:151:ILE:HA	1:E:154:THR:HG23	1.97	0.46
1:B:189:PRO:HD3	1:B:221:VAL:HG21	1.98	0.46
1:C:45:ILE:HG23	1:F:95:CYS:SG	2.56	0.45
1:F:8:ILE:CG2	1:F:61:LEU:HD21	2.47	0.45
1:C:8:ILE:HG22	1:C:61:LEU:HD21	1.98	0.45
1:A:8:ILE:HG22	1:A:61:LEU:HD21	1.98	0.45
1:C:153:LEU:O	1:C:153:LEU:HG	2.14	0.45
1:E:271:ASP:O	1:E:275:VAL:HG12	2.16	0.45

Continued on next page...

Continued from previous page...

Atom-1	Atom-2	Interatomic distance (Å)	Clash overlap (Å)
1:E:199:ASN:C	1:E:199:ASN:HD22	2.19	0.45
1:C:140:ILE:CG2	1:C:175:ARG:HB2	2.47	0.45
1:B:101:GLU:HA	1:B:104:ARG:HH11	1.82	0.45
1:C:130:ALA:O	1:C:134:LEU:HG	2.16	0.45
1:C:260:TYR:O	1:C:261:GLU:C	2.54	0.45
1:E:148:LYS:O	1:E:152:GLU:HG2	2.17	0.45
1:F:260:TYR:O	1:F:261:GLU:C	2.54	0.45
1:F:306:LYS:O	1:F:309:ARG:CD	2.65	0.45
1:A:55:ARG:NH1	1:A:55:ARG:HG2	2.30	0.45
1:F:40:VAL:HB	1:F:43:HIS:HB2	1.97	0.45
1:B:42:GLN:HB2	1:B:80:GLN:OE1	2.16	0.45
1:D:125:TYR:N	1:D:126:PRO:CD	2.80	0.45
1:B:86:HIS:CD2	1:B:132:ASP:OD1	2.62	0.45
1:C:125:TYR:N	1:C:126:PRO:CD	2.80	0.45
1:A:54:LEU:O	1:A:58:ILE:HG13	2.17	0.45
1:A:233:GLU:O	1:A:234:ALA:CB	2.65	0.45
1:D:225:GLU:OE1	1:D:235:LYS:HD2	2.17	0.45
1:D:107:GLN:C	1:D:109:LYS:H	2.19	0.45
1:B:52:HIS:O	1:B:56:GLN:HB2	2.17	0.45
1:E:281:ARG:HH11	1:E:281:ARG:HG3	1.82	0.45
1:C:133:ILE:O	1:C:138:THR:CG2	2.65	0.45
1:E:108:PHE:C	1:E:110:GLU:N	2.69	0.45
1:B:13:VAL:HG13	1:B:13:VAL:O	2.16	0.45
1:B:108:PHE:C	1:B:110:GLU:N	2.70	0.45
1:E:235:LYS:N	1:E:236:PRO:HD3	2.32	0.45
1:E:176:ILE:HG23	1:E:177:PRO:O	2.16	0.45
1:F:151:ILE:HG21	1:F:174:ALA:HB2	1.98	0.45
1:A:234:ALA:C	1:A:236:PRO:HD3	2.37	0.44
1:B:8:ILE:CG2	1:B:61:LEU:HD21	2.47	0.44
1:B:169:PHE:HZ	1:B:318:MET:SD	2.41	0.44
1:C:209:ASP:OD1	1:C:211:LYS:HB3	2.17	0.44
1:B:150:HIS:O	1:B:154:THR:HG23	2.17	0.44
1:F:137:ASN:OD1	1:F:314:MET:CE	2.65	0.44
1:C:77:LEU:O	1:C:303:GLY:HA3	2.17	0.44
1:D:8:ILE:HG22	1:D:61:LEU:HD21	1.98	0.44
1:B:151:ILE:HG21	1:B:174:ALA:HB2	2.00	0.44
1:E:213:ILE:CD1	1:E:280:LEU:HD12	2.47	0.44
1:B:126:PRO:CB	1:B:127:PRO:HD3	2.46	0.44
1:A:118:VAL:O	1:D:99:ILE:HG13	2.17	0.44
1:D:25:GLN:OE1	1:D:178:LYS:NZ	2.50	0.44
1:A:60:ARG:HG2	1:A:287:TYR:OH	2.18	0.44

Continued on next page...

Continued from previous page...

Atom-1	Atom-2	Interatomic distance (Å)	Clash overlap (Å)
1:F:164:ARG:HD2	1:F:165:TYR:CZ	2.52	0.44
1:A:209:ASP:OD1	1:A:211:LYS:HB3	2.18	0.44
1:D:256:LEU:O	1:D:260:TYR:HD1	2.00	0.44
1:B:200:PRO:O	1:B:216:LYS:HE2	2.17	0.44
1:B:195:LYS:CD	1:B:195:LYS:N	2.78	0.44
1:C:162:ASN:O	1:C:166:GLY:N	2.43	0.44
1:C:179:VAL:HB	1:C:180:GLY:H	1.61	0.44
1:D:189:PRO:CB	1:D:236:PRO:HB2	2.47	0.44
1:A:273:ALA:O	1:A:277:ILE:HG13	2.18	0.44
1:B:14:ILE:HD11	1:B:206:LEU:CD1	2.48	0.43
1:A:210:ALA:HB1	1:A:277:ILE:HD13	2.00	0.43
1:B:249:SER:OG	1:B:251:GLN:HG3	2.18	0.43
1:C:210:ALA:O	1:C:214:GLU:HB2	2.17	0.43
1:D:105:MET:HE1	1:D:153:LEU:HD22	1.99	0.43
1:C:14:ILE:HG13	1:C:206:LEU:HG	2.00	0.43
1:B:272:LEU:HD12	1:B:275:VAL:CG1	2.48	0.43
1:D:128:LEU:O	1:D:131:ALA:HB3	2.18	0.43
1:D:253:ILE:O	1:D:257:GLU:HG3	2.17	0.43
1:C:52:HIS:O	1:C:56:GLN:HB2	2.18	0.43
1:D:153:LEU:O	1:D:156:ASP:HB2	2.18	0.43
1:B:314:MET:O	1:B:318:MET:HG3	2.18	0.43
1:C:233:GLU:O	1:C:234:ALA:HB3	2.19	0.43
1:E:226:GLY:HA2	1:E:265:TYR:CE2	2.53	0.43
1:C:79:ILE:HG21	1:F:325:GLY:HA2	2.00	0.43
1:F:133:ILE:O	1:F:138:THR:HG23	2.18	0.43
1:E:43:HIS:CE1	1:E:132:ASP:OD2	2.72	0.43
1:E:293:SER:OG	1:E:295:GLU:HB2	2.18	0.43
1:D:24:ARG:HH11	1:D:24:ARG:HB3	1.83	0.43
1:C:50:ASP:HB3	1:C:53:GLU:HB2	1.99	0.43
1:B:177:PRO:O	1:B:178:LYS:CB	2.62	0.43
1:E:8:ILE:CG2	1:E:61:LEU:HD21	2.49	0.43
1:B:217:ILE:HA	1:B:217:ILE:HD13	1.92	0.43
1:E:211:LYS:HB3	1:E:211:LYS:NZ	2.34	0.43
1:D:25:GLN:HB2	1:D:25:GLN:HE21	1.58	0.43
1:A:65:TYR:O	1:A:70:ILE:HG12	2.18	0.43
1:D:171:ILE:HD12	1:D:171:ILE:N	2.34	0.43
1:E:25:GLN:O	1:E:28:GLU:OE1	2.37	0.43
1:F:109:LYS:C	1:F:111:LYS:N	2.72	0.43
1:D:204:ILE:HA	1:D:208:ASP:OD2	2.18	0.43
1:D:5:PHE:CB	1:D:138:THR:HG21	2.42	0.43
1:A:140:ILE:HG23	1:A:175:ARG:CB	2.49	0.43

Continued on next page...

Continued from previous page...

Atom-1	Atom-2	Interatomic distance (Å)	Clash overlap (Å)
1:A:230:TYR:OH	1:A:232:LYS:HE3	2.19	0.43
1:F:3:THR:HB	1:F:138:THR:HA	2.00	0.43
1:E:238:ILE:HD13	1:E:238:ILE:HA	1.87	0.43
1:B:79:ILE:CD1	1:E:326:ARG:HD2	2.49	0.43
1:F:80:GLN:NE2	1:F:132:ASP:OD1	2.52	0.43
1:E:189:PRO:HD3	1:E:221:VAL:HG21	1.99	0.43
1:C:316:ARG:HA	1:C:316:ARG:NH1	2.34	0.43
1:E:208:ASP:OD2	1:E:216:LYS:NZ	2.40	0.42
1:A:45:ILE:HA	1:A:45:ILE:HD12	1.84	0.42
1:B:252:SER:HB2	1:B:254:GLU:OE1	2.18	0.42
1:A:213:ILE:HD13	1:A:276:VAL:HG12	2.01	0.42
1:C:115:LYS:C	1:C:117:ALA:H	2.22	0.42
1:A:43:HIS:CE1	1:A:132:ASP:OD2	2.73	0.42
1:A:231:ASP:CB	1:A:235:LYS:HB2	2.45	0.42
1:E:31:HIS:HA	1:E:74:GLN:HE21	1.84	0.42
1:C:226:GLY:HA2	1:C:265:TYR:CE2	2.54	0.42
1:E:219:SER:O	1:E:220:ALA:C	2.57	0.42
1:E:281:ARG:HB3	1:E:282:PRO:CD	2.50	0.42
1:D:30:GLN:O	1:D:74:GLN:HG3	2.20	0.42
1:D:78:PHE:CD1	1:D:78:PHE:N	2.87	0.42
1:D:176:ILE:HG22	1:D:177:PRO:O	2.20	0.42
1:A:43:HIS:HD2	1:A:125:TYR:HB2	1.84	0.42
1:D:86:HIS:CD2	1:D:132:ASP:HA	2.55	0.42
1:C:42:GLN:HB2	1:C:80:GLN:OE1	2.20	0.42
1:E:186:LEU:O	1:E:221:VAL:HG22	2.19	0.42
1:E:162:ASN:O	1:E:166:GLY:N	2.45	0.42
1:E:84:PRO:O	1:E:86:HIS:N	2.53	0.42
1:B:176:ILE:CB	1:B:177:PRO:CD	2.83	0.42
1:A:122:LEU:HD13	1:A:122:LEU:HA	1.87	0.42
1:B:109:LYS:C	1:B:111:LYS:H	2.23	0.42
1:F:109:LYS:O	1:F:111:LYS:N	2.52	0.42
1:F:45:ILE:O	1:F:45:ILE:CG2	2.68	0.42
1:F:4:ILE:HG23	1:F:142:PRO:HD3	2.01	0.42
1:B:97:VAL:HG13	1:B:97:VAL:O	2.20	0.42
1:D:281:ARG:HB3	1:D:282:PRO:CD	2.50	0.42
1:E:174:ALA:O	1:E:175:ARG:O	2.38	0.41
1:A:74:GLN:HA	1:E:218:LYS:NZ	2.35	0.41
1:F:311:ALA:O	1:F:315:VAL:HG23	2.20	0.41
1:D:109:LYS:C	1:D:111:LYS:H	2.23	0.41
1:B:176:ILE:CB	1:B:177:PRO:HD3	2.50	0.41
1:B:129:MET:HE3	2:B:401:TRP:CE3	2.55	0.41

Continued on next page...

Continued from previous page...

Atom-1	Atom-2	Interatomic distance (Å)	Clash overlap (Å)
1:D:147:GLN:O	1:D:148:LYS:C	2.58	0.41
1:D:40:VAL:HG11	2:D:403:TRP:NE1	2.35	0.41
1:E:23:LEU:HA	1:E:26:PHE:CD2	2.52	0.41
1:B:61:LEU:HD12	1:B:61:LEU:HA	1.88	0.41
1:D:228:ILE:HD11	1:D:265:TYR:CD1	2.53	0.41
1:A:11:SER:O	1:A:13:VAL:HG12	2.20	0.41
1:C:70:ILE:O	1:C:72:PRO:HD3	2.20	0.41
1:B:124:THR:O	1:B:127:PRO:HD2	2.20	0.41
1:A:101:GLU:HA	1:A:104:ARG:NH1	2.35	0.41
1:A:105:MET:HE3	1:A:105:MET:HA	2.02	0.41
1:B:129:MET:HG3	2:B:401:TRP:CD1	2.55	0.41
1:A:10:PRO:HA	1:A:61:LEU:HD22	2.02	0.41
1:E:56:GLN:HG3	1:E:60:ARG:NH1	2.36	0.41
1:D:101:GLU:HA	1:D:104:ARG:HH11	1.85	0.41
1:D:272:LEU:O	1:D:275:VAL:HG13	2.21	0.41
1:C:25:GLN:OE1	1:C:178:LYS:HB2	2.21	0.41
1:C:179:VAL:C	1:C:181:ALA:H	2.24	0.41
1:B:254:GLU:CD	1:B:254:GLU:H	2.21	0.41
1:E:318:MET:O	1:E:322:MET:HG2	2.20	0.41
1:D:302:GLU:HG2	1:D:302:GLU:O	2.20	0.41
1:E:260:TYR:O	1:E:261:GLU:C	2.59	0.41
1:E:84:PRO:O	1:E:87:ALA:N	2.53	0.41
1:C:165:TYR:CE2	1:C:322:MET:HA	2.56	0.41
1:F:107:GLN:C	1:F:109:LYS:H	2.24	0.41
1:F:230:TYR:CD1	1:F:231:ASP:N	2.87	0.41
1:A:71:ASP:HA	1:A:72:PRO:HD2	1.98	0.41
1:B:86:HIS:HE1	1:B:136:TYR:OH	2.04	0.41
1:C:185:SER:HB3	1:C:188:ASP:O	2.21	0.41
1:E:84:PRO:O	1:E:85:ALA:C	2.56	0.41
1:F:55:ARG:HG2	1:F:55:ARG:NH1	2.34	0.41
1:B:105:MET:O	1:B:107:GLN:N	2.53	0.41
1:B:110:GLU:C	1:B:112:SER:H	2.24	0.41
1:F:130:ALA:O	1:F:134:LEU:HG	2.21	0.41
1:B:176:ILE:HB	1:B:177:PRO:HD3	1.95	0.41
1:B:142:PRO:HA	1:B:175:ARG:O	2.21	0.41
1:F:306:LYS:O	1:F:309:ARG:CZ	2.69	0.41
1:D:151:ILE:HG21	1:D:174:ALA:HB2	2.03	0.41
1:F:263:LYS:HB3	1:F:267:VAL:CG2	2.51	0.41
1:F:148:LYS:O	1:F:152:GLU:HG2	2.21	0.41
1:D:176:ILE:HG23	1:D:177:PRO:N	2.35	0.41
1:E:189:PRO:HB2	1:E:236:PRO:HB2	2.02	0.41

Continued on next page...

Continued from previous page...

Atom-1	Atom-2	Interatomic distance (Å)	Clash overlap (Å)
1:D:85:ALA:HB1	1:D:315:VAL:CG2	2.51	0.41
1:A:110:GLU:C	1:A:112:SER:H	2.24	0.41
1:F:231:ASP:HB3	1:F:235:LYS:HB2	2.03	0.41
1:D:211:LYS:HZ3	1:D:211:LYS:HB3	1.86	0.41
1:E:206:LEU:O	1:E:207:LEU:HD23	2.20	0.40
1:B:86:HIS:CD2	1:B:132:ASP:HA	2.56	0.40
1:A:42:GLN:HB2	1:A:80:GLN:OE1	2.20	0.40
1:D:24:ARG:HH11	1:D:24:ARG:CB	2.34	0.40
1:F:47:VAL:O	1:F:48:TRP:C	2.59	0.40
1:D:105:MET:CA	1:D:149:GLN:HE22	2.33	0.40
1:D:99:ILE:H	1:D:99:ILE:HG13	1.77	0.40
1:A:313:GLU:HG3	1:A:317:LYS:HZ1	1.86	0.40
1:C:313:GLU:HG3	1:C:317:LYS:HZ2	1.86	0.40
1:D:168:LEU:CD2	1:D:314:MET:SD	3.10	0.40
1:E:14:ILE:O	1:E:14:ILE:HG13	2.21	0.40
1:E:294:GLU:HG3	1:E:294:GLU:H	1.67	0.40
1:A:108:PHE:C	1:A:110:GLU:H	2.24	0.40
1:D:168:LEU:HD22	1:D:168:LEU:O	2.21	0.40
1:B:129:MET:CE	2:B:401:TRP:CE3	3.05	0.40
1:A:272:LEU:O	1:A:275:VAL:HG12	2.21	0.40
1:C:121:GLY:HA2	1:C:124:THR:OG1	2.21	0.40
1:C:310:VAL:O	1:C:313:GLU:HB3	2.22	0.40
1:A:171:ILE:N	1:A:171:ILE:HD12	2.37	0.40
1:D:59:ARG:CZ	1:D:296:LEU:HD23	2.52	0.40
1:D:272:LEU:HA	1:D:275:VAL:CG1	2.52	0.40
1:D:225:GLU:HG2	1:D:225:GLU:O	2.21	0.40
1:A:252:SER:OG	1:A:255:GLU:HB2	2.22	0.40
1:F:281:ARG:O	1:F:285:GLU:HG3	2.21	0.40
1:A:115:LYS:C	1:A:117:ALA:H	2.24	0.40

There are no symmetry-related clashes.

5.3 Torsion angles ⓘ

5.3.1 Protein backbone ⓘ

In the following table, the Percentiles column shows the percent Ramachandran outliers of the chain as a percentile score with respect to all X-ray entries followed by that with respect to entries of similar resolution.

The Analysed column shows the number of residues for which the backbone conformation was analysed, and the total number of residues.

Mol	Chain	Analysed	Favoured	Allowed	Outliers	Percentiles	
1	A	324/328 (99%)	287 (89%)	30 (9%)	7 (2%)	8	22
1	B	324/328 (99%)	285 (88%)	31 (10%)	8 (2%)	7	18
1	C	324/328 (99%)	290 (90%)	23 (7%)	11 (3%)	5	10
1	D	324/328 (99%)	280 (86%)	40 (12%)	4 (1%)	16	39
1	E	324/328 (99%)	281 (87%)	33 (10%)	10 (3%)	5	12
1	F	324/328 (99%)	289 (89%)	27 (8%)	8 (2%)	7	18
All	All	1944/1968 (99%)	1712 (88%)	184 (10%)	48 (2%)	7	18

All (48) Ramachandran outliers are listed below:

Mol	Chain	Res	Type
1	A	112	SER
1	A	113	ALA
1	A	179	VAL
1	A	261	GLU
1	B	179	VAL
1	C	261	GLU
1	D	40	VAL
1	E	12	GLY
1	E	107	GLN
1	E	175	ARG
1	E	261	GLU
1	F	106	THR
1	F	261	GLU
1	A	40	VAL
1	B	106	THR
1	B	107	GLN
1	B	116	GLU
1	B	182	ARG
1	C	112	SER
1	C	137	ASN
1	C	179	VAL
1	C	220	ALA
1	D	106	THR
1	D	107	GLN
1	E	106	THR
1	F	12	GLY
1	F	107	GLN
1	F	110	GLU
1	C	107	GLN
1	C	116	GLU

Continued on next page...

Continued from previous page...

Mol	Chain	Res	Type
1	D	261	GLU
1	E	113	ALA
1	E	116	GLU
1	B	12	GLY
1	C	12	GLY
1	C	106	THR
1	C	182	ARG
1	E	85	ALA
1	E	110	GLU
1	C	105	MET
1	E	105	MET
1	F	179	VAL
1	F	236	PRO
1	A	12	GLY
1	A	148	LYS
1	B	110	GLU
1	F	40	VAL
1	B	176	ILE

5.3.2 Protein sidechains ⓘ

In the following table, the Percentiles column shows the percent sidechain outliers of the chain as a percentile score with respect to all X-ray entries followed by that with respect to entries of similar resolution.

The Analysed column shows the number of residues for which the sidechain conformation was analysed, and the total number of residues.

Mol	Chain	Analysed	Rotameric	Outliers	Percentiles	
1	A	270/280 (96%)	248 (92%)	22 (8%)	15	33
1	B	270/280 (96%)	247 (92%)	23 (8%)	13	30
1	C	270/280 (96%)	249 (92%)	21 (8%)	16	35
1	D	270/280 (96%)	246 (91%)	24 (9%)	12	27
1	E	270/280 (96%)	243 (90%)	27 (10%)	9	22
1	F	270/280 (96%)	250 (93%)	20 (7%)	17	39
All	All	1620/1680 (96%)	1483 (92%)	137 (8%)	12	30

All (137) residues with a non-rotameric sidechain are listed below:

Mol	Chain	Res	Type
1	A	1	MET
1	A	9	GLN
1	A	29	LEU
1	A	48	TRP
1	A	104	ARG
1	A	105	MET
1	A	106	THR
1	A	107	GLN
1	A	149	GLN
1	A	168	LEU
1	A	194	SER
1	A	195	LYS
1	A	201	LYS
1	A	214	GLU
1	A	241	LEU
1	A	243	ASN
1	A	278	GLU
1	A	289	HIS
1	A	294	GLU
1	A	298	ARG
1	A	308	ASN
1	A	316	ARG
1	B	1	MET
1	B	9	GLN
1	B	24	ARG
1	B	48	TRP
1	B	55	ARG
1	B	56	GLN
1	B	59	ARG
1	B	104	ARG
1	B	107	GLN
1	B	122	LEU
1	B	138	THR
1	B	164	ARG
1	B	168	LEU
1	B	195	LYS
1	B	196	SER
1	B	241	LEU
1	B	245	TYR
1	B	258	ARG
1	B	278	GLU
1	B	289	HIS
1	B	298	ARG

Continued on next page...

Continued from previous page...

Mol	Chain	Res	Type
1	B	316	ARG
1	B	320	GLN
1	C	9	GLN
1	C	23	LEU
1	C	48	TRP
1	C	73	THR
1	C	106	THR
1	C	138	THR
1	C	164	ARG
1	C	168	LEU
1	C	178	LYS
1	C	179	VAL
1	C	182	ARG
1	C	195	LYS
1	C	199	ASN
1	C	201	LYS
1	C	241	LEU
1	C	245	TYR
1	C	278	GLU
1	C	289	HIS
1	C	294	GLU
1	C	302	GLU
1	C	316	ARG
1	D	1	MET
1	D	24	ARG
1	D	32	GLU
1	D	48	TRP
1	D	50	ASP
1	D	104	ARG
1	D	107	GLN
1	D	138	THR
1	D	145	GLU
1	D	156	ASP
1	D	168	LEU
1	D	178	LYS
1	D	185	SER
1	D	195	LYS
1	D	209	ASP
1	D	222	THR
1	D	231	ASP
1	D	241	LEU
1	D	245	TYR

Continued on next page...

Continued from previous page...

Mol	Chain	Res	Type
1	D	275	VAL
1	D	278	GLU
1	D	284	GLN
1	D	289	HIS
1	D	316	ARG
1	E	25	GLN
1	E	28	GLU
1	E	48	TRP
1	E	55	ARG
1	E	105	MET
1	E	106	THR
1	E	107	GLN
1	E	122	LEU
1	E	138	THR
1	E	145	GLU
1	E	154	THR
1	E	168	LEU
1	E	175	ARG
1	E	182	ARG
1	E	195	LYS
1	E	199	ASN
1	E	218	LYS
1	E	241	LEU
1	E	245	TYR
1	E	263	LYS
1	E	275	VAL
1	E	278	GLU
1	E	289	HIS
1	E	294	GLU
1	E	298	ARG
1	E	316	ARG
1	E	320	GLN
1	F	9	GLN
1	F	45	ILE
1	F	48	TRP
1	F	56	GLN
1	F	104	ARG
1	F	107	GLN
1	F	127	PRO
1	F	168	LEU
1	F	190	THR
1	F	195	LYS

Continued on next page...

Continued from previous page...

Mol	Chain	Res	Type
1	F	218	LYS
1	F	222	THR
1	F	241	LEU
1	F	245	TYR
1	F	253	ILE
1	F	289	HIS
1	F	294	GLU
1	F	309	ARG
1	F	316	ARG
1	F	326	ARG

Some sidechains can be flipped to improve hydrogen bonding and reduce clashes. All (40) such sidechains are listed below:

Mol	Chain	Res	Type
1	A	34	ASN
1	A	43	HIS
1	A	56	GLN
1	A	86	HIS
1	A	320	GLN
1	B	9	GLN
1	B	43	HIS
1	B	56	GLN
1	B	86	HIS
1	B	149	GLN
1	C	9	GLN
1	C	34	ASN
1	C	56	GLN
1	C	86	HIS
1	C	199	ASN
1	C	251	GLN
1	C	259	GLN
1	D	9	GLN
1	D	34	ASN
1	D	86	HIS
1	D	149	GLN
1	D	199	ASN
1	D	251	GLN
1	D	259	GLN
1	E	25	GLN
1	E	31	HIS
1	E	34	ASN
1	E	43	HIS

Continued on next page...

Continued from previous page...

Mol	Chain	Res	Type
1	E	56	GLN
1	E	86	HIS
1	E	199	ASN
1	E	251	GLN
1	E	259	GLN
1	F	9	GLN
1	F	25	GLN
1	F	43	HIS
1	F	56	GLN
1	F	86	HIS
1	F	149	GLN
1	F	284	GLN

5.3.3 RNA [i](#)

There are no RNA molecules in this entry.

5.4 Non-standard residues in protein, DNA, RNA chains [i](#)

There are no non-standard protein/DNA/RNA residues in this entry.

5.5 Carbohydrates [i](#)

There are no carbohydrates in this entry.

5.6 Ligand geometry [i](#)

6 ligands are modelled in this entry.

In the following table, the Counts columns list the number of bonds (or angles) for which Mogul statistics could be retrieved, the number of bonds (or angles) that are observed in the model and the number of bonds (or angles) that are defined in the chemical component dictionary. The Link column lists molecule types, if any, to which the group is linked. The Z score for a bond length (or angle) is the number of standard deviations the observed value is removed from the expected value. A bond length (or angle) with $|Z| > 2$ is considered an outlier worth inspection. RMSZ is the root-mean-square of all Z scores of the bond lengths (or angles).

Mol	Type	Chain	Res	Link	Bond lengths			Bond angles		
					Counts	RMSZ	$\# Z > 2$	Counts	RMSZ	$\# Z > 2$
2	TRP	A	400	-	12,16,16	1.63	4 (33%)	7,22,22	2.71	2 (28%)

Mol	Type	Chain	Res	Link	Bond lengths			Bond angles		
					Counts	RMSZ	# Z > 2	Counts	RMSZ	# Z > 2
2	TRP	B	401	-	12,16,16	1.42	2 (16%)	7,22,22	2.25	2 (28%)
2	TRP	C	402	-	12,16,16	1.32	2 (16%)	7,22,22	3.14	3 (42%)
2	TRP	D	403	-	12,16,16	1.73	3 (25%)	7,22,22	3.28	4 (57%)
2	TRP	E	404	-	12,16,16	1.44	2 (16%)	7,22,22	2.85	3 (42%)
2	TRP	F	405	-	12,16,16	1.39	2 (16%)	7,22,22	2.40	2 (28%)

In the following table, the Chirals column lists the number of chiral outliers, the number of chiral centers analysed, the number of these observed in the model and the number defined in the chemical component dictionary. Similar counts are reported in the Torsion and Rings columns. '-' means no outliers of that kind were identified.

Mol	Type	Chain	Res	Link	Chirals	Torsions	Rings
2	TRP	A	400	-	-	0/3/8/8	0/2/2/2
2	TRP	B	401	-	-	0/3/8/8	0/2/2/2
2	TRP	C	402	-	-	0/3/8/8	0/2/2/2
2	TRP	D	403	-	-	0/3/8/8	0/2/2/2
2	TRP	E	404	-	-	0/3/8/8	0/2/2/2
2	TRP	F	405	-	-	0/3/8/8	0/2/2/2

All (15) bond length outliers are listed below:

Mol	Chain	Res	Type	Atoms	Z	Observed(Å)	Ideal(Å)
2	D	403	TRP	CD1-CG	-2.71	1.33	1.38
2	A	400	TRP	CZ2-CE2	-2.47	1.37	1.41
2	D	403	TRP	CD2-CE2	-2.16	1.36	1.42
2	A	400	TRP	CD1-CG	-2.06	1.34	1.38
2	B	401	TRP	CH2-CZ2	2.69	1.42	1.36
2	C	402	TRP	CH2-CZ3	2.70	1.44	1.38
2	A	400	TRP	CH2-CZ2	2.76	1.43	1.36
2	B	401	TRP	CH2-CZ3	2.82	1.45	1.38
2	C	402	TRP	CH2-CZ2	3.00	1.43	1.36
2	A	400	TRP	CH2-CZ3	3.04	1.45	1.38
2	F	405	TRP	CH2-CZ3	3.10	1.46	1.38
2	E	404	TRP	CH2-CZ3	3.11	1.46	1.38
2	F	405	TRP	CH2-CZ2	3.19	1.44	1.36
2	D	403	TRP	CH2-CZ2	3.38	1.44	1.36
2	E	404	TRP	CH2-CZ2	3.51	1.44	1.36

All (16) bond angle outliers are listed below:

Mol	Chain	Res	Type	Atoms	Z	Observed(°)	Ideal(°)
2	C	402	TRP	CB-CG-CD1	-6.62	119.78	127.97
2	A	400	TRP	CB-CG-CD1	-6.44	120.00	127.97
2	D	403	TRP	CB-CG-CD1	-6.29	120.19	127.97
2	E	404	TRP	CB-CG-CD1	-6.00	120.55	127.97
2	F	405	TRP	CB-CG-CD1	-5.41	121.28	127.97
2	B	401	TRP	CB-CG-CD1	-5.12	121.64	127.97
2	D	403	TRP	CZ3-CE3-CD2	-5.03	113.76	120.88
2	C	402	TRP	CZ3-CE3-CD2	-3.60	115.78	120.88
2	E	404	TRP	CZ3-CE3-CD2	-3.51	115.91	120.88
2	F	405	TRP	CZ3-CE3-CD2	-2.48	117.37	120.88
2	A	400	TRP	CZ3-CE3-CD2	-2.48	117.38	120.88
2	D	403	TRP	CH2-CZ2-CE2	-2.32	116.34	120.06
2	B	401	TRP	CZ3-CE3-CD2	-2.19	117.78	120.88
2	E	404	TRP	CH2-CZ3-CE3	2.01	123.38	120.45
2	D	403	TRP	CH2-CZ3-CE3	2.12	123.53	120.45
2	C	402	TRP	CH2-CZ3-CE3	2.75	124.45	120.45

There are no chirality outliers.

There are no torsion outliers.

There are no ring outliers.

3 monomers are involved in 6 short contacts:

Mol	Chain	Res	Type	Clashes	Symm-Clashes
2	B	401	TRP	3	0
2	D	403	TRP	1	0
2	F	405	TRP	2	0

5.7 Other polymers [i](#)

There are no such residues in this entry.

5.8 Polymer linkage issues [i](#)

There are no chain breaks in this entry.

6 Fit of model and data ⓘ

6.1 Protein, DNA and RNA chains ⓘ

In the following table, the column labelled ‘#RSRZ> 2’ contains the number (and percentage) of RSRZ outliers, followed by percent RSRZ outliers for the chain as percentile scores relative to all X-ray entries and entries of similar resolution. The OWAB column contains the minimum, median, 95th percentile and maximum values of the occupancy-weighted average B-factor per residue. The column labelled ‘Q< 0.9’ lists the number of (and percentage) of residues with an average occupancy less than 0.9.

Mol	Chain	Analysed	<RSRZ>	#RSRZ>2	OWAB(Å ²)	Q<0.9
1	A	326/328 (99%)	-0.13	17 (5%) 31 30	21, 45, 85, 110	0
1	B	326/328 (99%)	-0.14	17 (5%) 31 30	10, 44, 82, 116	0
1	C	326/328 (99%)	-0.26	13 (3%) 42 41	19, 42, 84, 112	0
1	D	326/328 (99%)	-0.12	19 (5%) 26 25	21, 45, 89, 120	0
1	E	326/328 (99%)	-0.22	18 (5%) 29 27	19, 40, 82, 123	0
1	F	326/328 (99%)	-0.11	18 (5%) 29 27	6, 48, 86, 120	0
All	All	1956/1968 (99%)	-0.16	102 (5%) 31 30	6, 44, 87, 123	0

All (102) RSRZ outliers are listed below:

Mol	Chain	Res	Type	RSRZ
1	E	179	VAL	12.7
1	D	179	VAL	11.0
1	F	114	GLY	9.7
1	F	113	ALA	9.4
1	B	114	GLY	9.0
1	F	180	GLY	8.8
1	A	177	PRO	8.6
1	D	114	GLY	8.2
1	B	179	VAL	7.6
1	D	113	ALA	6.8
1	E	177	PRO	6.7
1	D	180	GLY	6.6
1	C	178	LYS	6.4
1	C	179	VAL	6.4
1	E	114	GLY	6.4
1	F	179	VAL	6.3
1	B	177	PRO	6.0
1	B	180	GLY	5.7
1	E	178	LYS	5.6

Continued on next page...

Continued from previous page...

Mol	Chain	Res	Type	RSRZ
1	E	113	ALA	5.6
1	A	180	GLY	5.4
1	B	113	ALA	5.3
1	A	114	GLY	5.2
1	D	178	LYS	5.2
1	A	113	ALA	5.1
1	C	112	SER	5.0
1	B	258	ARG	4.8
1	A	112	SER	4.5
1	D	112	SER	4.3
1	C	177	PRO	4.3
1	C	113	ALA	4.3
1	F	106	THR	4.3
1	B	112	SER	4.2
1	A	179	VAL	4.2
1	A	176	ILE	4.1
1	F	177	PRO	4.1
1	E	180	GLY	4.0
1	A	106	THR	3.9
1	C	176	ILE	3.8
1	B	178	LYS	3.8
1	E	116	GLU	3.8
1	A	12	GLY	3.7
1	E	112	SER	3.6
1	C	114	GLY	3.6
1	D	181	ALA	3.6
1	E	176	ILE	3.5
1	D	177	PRO	3.4
1	A	181	ALA	3.2
1	F	298	ARG	3.2
1	F	181	ALA	3.1
1	B	116	GLU	3.1
1	C	116	GLU	3.1
1	E	106	THR	3.1
1	B	181	ALA	3.0
1	C	182	ARG	2.9
1	F	12	GLY	2.9
1	D	104	ARG	2.9
1	A	258	ARG	2.9
1	F	108	PHE	2.9
1	F	178	LYS	2.8
1	B	316	ARG	2.8

Continued on next page...

Continued from previous page...

Mol	Chain	Res	Type	RSRZ
1	A	116	GLU	2.7
1	E	175	ARG	2.7
1	B	115	LYS	2.7
1	C	106	THR	2.7
1	A	52	HIS	2.7
1	F	1	MET	2.6
1	D	12	GLY	2.6
1	F	116	GLU	2.6
1	B	1	MET	2.6
1	F	115	LYS	2.6
1	D	176	ILE	2.5
1	D	261	GLU	2.5
1	A	229	ARG	2.5
1	D	116	GLU	2.5
1	B	106	THR	2.5
1	D	115	LYS	2.4
1	A	115	LYS	2.4
1	E	25	GLN	2.4
1	F	229	ARG	2.4
1	F	28	GLU	2.3
1	C	111	LYS	2.3
1	F	258	ARG	2.3
1	E	108	PHE	2.2
1	C	258	ARG	2.2
1	E	148	LYS	2.2
1	A	111	LYS	2.2
1	F	112	SER	2.2
1	D	1	MET	2.2
1	D	182	ARG	2.2
1	E	115	LYS	2.2
1	D	106	THR	2.2
1	C	108	PHE	2.1
1	D	229	ARG	2.1
1	B	28	GLU	2.1
1	B	12	GLY	2.1
1	E	289	HIS	2.1
1	E	174	ALA	2.1
1	D	117	ALA	2.1
1	A	108	PHE	2.0
1	E	32	GLU	2.0
1	B	52	HIS	2.0

6.2 Non-standard residues in protein, DNA, RNA chains [i](#)

There are no non-standard protein/DNA/RNA residues in this entry.

6.3 Carbohydrates [i](#)

There are no carbohydrates in this entry.

6.4 Ligands [i](#)

In the following table, the Atoms column lists the number of modelled atoms in the group and the number defined in the chemical component dictionary. LLDF column lists the quality of electron density of the group with respect to its neighbouring residues in protein, DNA or RNA chains. The B-factors column lists the minimum, median, 95th percentile and maximum values of B factors of atoms in the group. The column labelled 'Q< 0.9' lists the number of atoms with occupancy less than 0.9.

Mol	Type	Chain	Res	Atoms	RSCC	RSR	LLDF	B-factors(Å ²)	Q<0.9
2	TRP	F	405	15/15	0.86	0.26	3.67	57,59,60,60	0
2	TRP	D	403	15/15	0.87	0.21	2.90	42,44,45,46	0
2	TRP	A	400	15/15	0.85	0.24	2.89	49,51,54,56	0
2	TRP	B	401	15/15	0.82	0.22	2.43	47,48,50,50	0
2	TRP	E	404	15/15	0.89	0.19	1.81	38,41,53,56	0
2	TRP	C	402	15/15	0.87	0.19	1.54	41,42,44,47	0

6.5 Other polymers [i](#)

There are no such residues in this entry.