



wwPDB X-ray Structure Validation Summary Report ⓘ

Feb 1, 2016 – 10:32 AM GMT

PDB ID : 3MCO
Title : Crystal Structure of the 6-hydroxymethyl-7,8-dihydropterin pyrophosphokinase dihydropteroate synthase bifunctional enzyme from Francisella tularensis
Authors : Pemble IV, C.W.; Mehta, P.K.; Mehra, S.; Li, Z.; Lee, R.E.; White, S.W.
Deposited on : 2010-03-29
Resolution : 2.30 Å(reported)

This is a wwPDB X-ray Structure Validation Summary Report for a publicly released PDB entry.
We welcome your comments at validation@mail.wwpdb.org
A user guide is available at
<http://wwpdb.org/validation/2016/XrayValidationReportHelp>
with specific help available everywhere you see the ⓘ symbol.

The following versions of software and data (see [references ⓘ](#)) were used in the production of this report:

MolProbity : 4.02b-467
Mogul : 1.7 (RC4), CSD as536be (2015)
Xtriage (Phenix) : 1.9-1692
EDS : rb-20026688
Percentile statistics : 20151230.v01 (using entries in the PDB archive December 30th 2015)
Refmac : 5.8.0135
CCP4 : 6.5.0
Ideal geometry (proteins) : Engh & Huber (2001)
Ideal geometry (DNA, RNA) : Parkinson et al. (1996)
Validation Pipeline (wwPDB-VP) : trunk26865

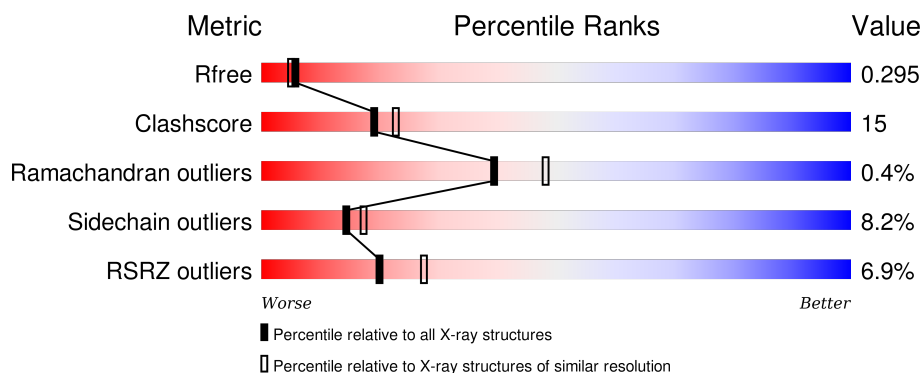
1 Overall quality at a glance

The following experimental techniques were used to determine the structure:

X-RAY DIFFRACTION

The reported resolution of this entry is 2.30 Å.

Percentile scores (ranging between 0-100) for global validation metrics of the entry are shown in the following graphic. The table shows the number of entries on which the scores are based.



Metric	Whole archive (#Entries)	Similar resolution (#Entries, resolution range(Å))
R_{free}	91344	3852 (2.30-2.30)
Clashscore	102246	4452 (2.30-2.30)
Ramachandran outliers	100387	4410 (2.30-2.30)
Sidechain outliers	100360	4409 (2.30-2.30)
RSRZ outliers	91569	3857 (2.30-2.30)

The table below summarises the geometric issues observed across the polymeric chains and their fit to the electron density. The red, orange, yellow and green segments on the lower bar indicate the fraction of residues that contain outliers for ≥ 3 , 2, 1 and 0 types of geometric quality criteria. A grey segment represents the fraction of residues that are not modelled. The numeric value for each fraction is indicated below the corresponding segment, with a dot representing fractions $\leq 5\%$. The upper red bar (where present) indicates the fraction of residues that have poor fit to the electron density. The numeric value is given above the bar.

Mol	Chain	Length	Quality of chain
1	A	442	
1	B	442	

2 Entry composition

There are 5 unique types of molecules in this entry. The entry contains 6506 atoms, of which 0 are hydrogens and 0 are deuteriums.

In the tables below, the ZeroOcc column contains the number of atoms modelled with zero occupancy, the AltConf column contains the number of residues with at least one atom in alternate conformation and the Trace column contains the number of residues modelled with at most 2 atoms.

- Molecule 1 is a protein called 2-amino-4-hydroxy-6-hydroxymethyldihydropteridine pyrophosphokinase/dihydropteroate synthase.

Mol	Chain	Residues	Atoms					ZeroOcc	AltConf	Trace
1	A	397	Total	C	N	O	S	0	0	0
			3208	2058	552	592	6			
1	B	386	Total	C	N	O	S	0	0	0
			3119	2000	539	574	6			

There are 44 discrepancies between the modelled and reference sequences:

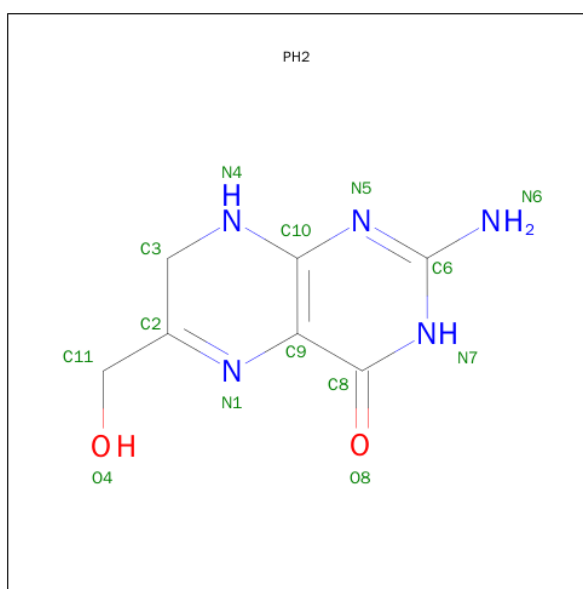
Chain	Residue	Modelled	Actual	Comment	Reference
A	-19	MET	-	EXPRESSION TAG	UNP Q2A2W3
A	-18	GLY	-	EXPRESSION TAG	UNP Q2A2W3
A	-17	SER	-	EXPRESSION TAG	UNP Q2A2W3
A	-16	SER	-	EXPRESSION TAG	UNP Q2A2W3
A	-15	HIS	-	EXPRESSION TAG	UNP Q2A2W3
A	-14	HIS	-	EXPRESSION TAG	UNP Q2A2W3
A	-13	HIS	-	EXPRESSION TAG	UNP Q2A2W3
A	-12	HIS	-	EXPRESSION TAG	UNP Q2A2W3
A	-11	HIS	-	EXPRESSION TAG	UNP Q2A2W3
A	-10	HIS	-	EXPRESSION TAG	UNP Q2A2W3
A	-9	SER	-	EXPRESSION TAG	UNP Q2A2W3
A	-8	SER	-	EXPRESSION TAG	UNP Q2A2W3
A	-7	GLY	-	EXPRESSION TAG	UNP Q2A2W3
A	-6	LEU	-	EXPRESSION TAG	UNP Q2A2W3
A	-5	VAL	-	EXPRESSION TAG	UNP Q2A2W3
A	-4	PRO	-	EXPRESSION TAG	UNP Q2A2W3
A	-3	ARG	-	EXPRESSION TAG	UNP Q2A2W3
A	-2	GLY	-	EXPRESSION TAG	UNP Q2A2W3
A	-1	SER	-	EXPRESSION TAG	UNP Q2A2W3
A	0	HIS	-	EXPRESSION TAG	UNP Q2A2W3
A	1	MET	-	EXPRESSION TAG	UNP Q2A2W3
A	2	VAL	-	EXPRESSION TAG	UNP Q2A2W3
B	-19	MET	-	EXPRESSION TAG	UNP Q2A2W3
B	-18	GLY	-	EXPRESSION TAG	UNP Q2A2W3

Continued on next page...

Continued from previous page...

Chain	Residue	Modelled	Actual	Comment	Reference
B	-17	SER	-	EXPRESSION TAG	UNP Q2A2W3
B	-16	SER	-	EXPRESSION TAG	UNP Q2A2W3
B	-15	HIS	-	EXPRESSION TAG	UNP Q2A2W3
B	-14	HIS	-	EXPRESSION TAG	UNP Q2A2W3
B	-13	HIS	-	EXPRESSION TAG	UNP Q2A2W3
B	-12	HIS	-	EXPRESSION TAG	UNP Q2A2W3
B	-11	HIS	-	EXPRESSION TAG	UNP Q2A2W3
B	-10	HIS	-	EXPRESSION TAG	UNP Q2A2W3
B	-9	SER	-	EXPRESSION TAG	UNP Q2A2W3
B	-8	SER	-	EXPRESSION TAG	UNP Q2A2W3
B	-7	GLY	-	EXPRESSION TAG	UNP Q2A2W3
B	-6	LEU	-	EXPRESSION TAG	UNP Q2A2W3
B	-5	VAL	-	EXPRESSION TAG	UNP Q2A2W3
B	-4	PRO	-	EXPRESSION TAG	UNP Q2A2W3
B	-3	ARG	-	EXPRESSION TAG	UNP Q2A2W3
B	-2	GLY	-	EXPRESSION TAG	UNP Q2A2W3
B	-1	SER	-	EXPRESSION TAG	UNP Q2A2W3
B	0	HIS	-	EXPRESSION TAG	UNP Q2A2W3
B	1	MET	-	EXPRESSION TAG	UNP Q2A2W3
B	2	VAL	-	EXPRESSION TAG	UNP Q2A2W3

- Molecule 2 is 2-AMINO-6-HYDROXYMETHYL-7,8-DIHYDRO-3H-PTERIDIN-4-ONE (three-letter code: PH2) (formula: C₇H₉N₅O₂).



Mol	Chain	Residues	Atoms				ZeroOcc	AltConf
2	A	1	Total	C	N	O	0	0
			14	7	5	2		

Continued on next page...

Mol	Chain	Residues	Atoms				ZeroOcc	AltConf
2	A	1	Total 14	C 7	N 5	O 2	0	0
2	B	1	Total 14	C 7	N 5	O 2	0	0
2	B	1	Total 14	C 7	N 5	O 2	0	0

Mol	Chain	Residues	Atoms	ZeroOcc	AltConf
4	B	2	Total Mg 2 2	0	0
4	A	2	Total Mg 2 2	0	0

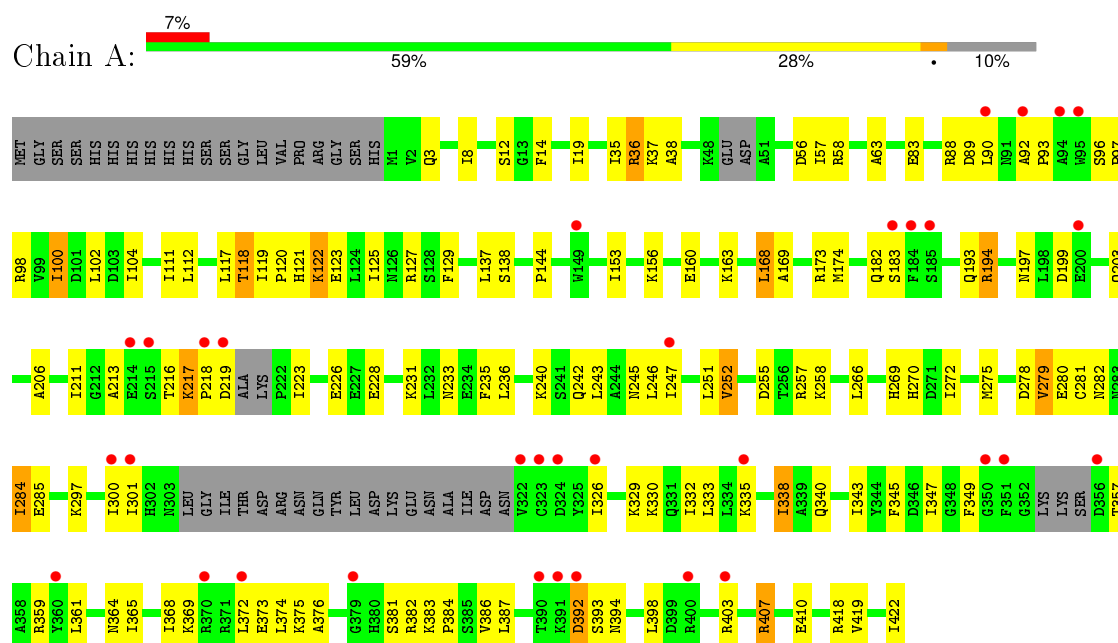
- 

Mol	Chain	Residues	Atoms		ZeroOcc	AltConf
5	A	29	Total 29	O 29	0	0
5	B	28	Total 28	O 28	0	0

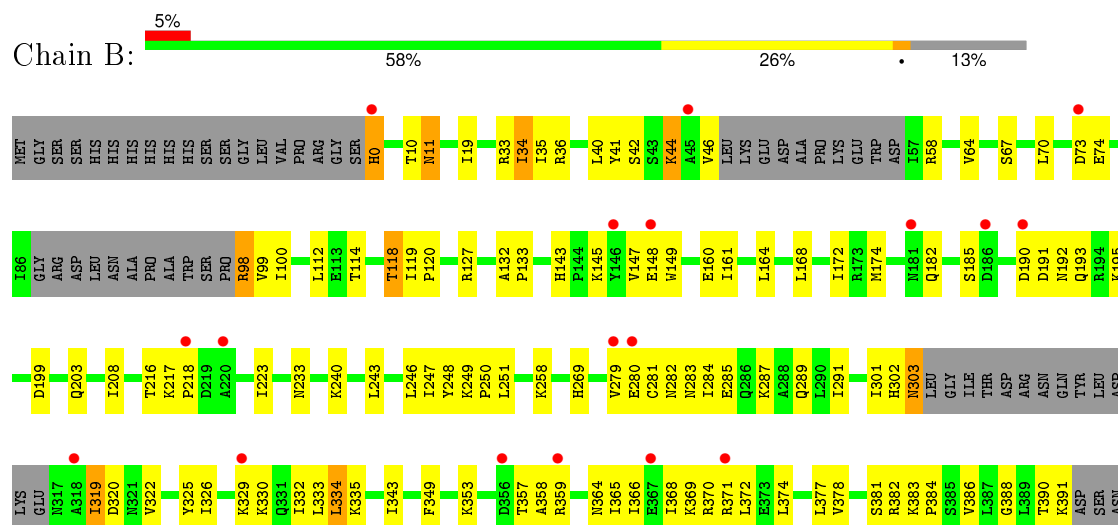
3 Residue-property plots

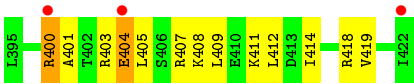
These plots are drawn for all protein, RNA and DNA chains in the entry. The first graphic for a chain summarises the proportions of errors displayed in the second graphic. The second graphic shows the sequence view annotated by issues in geometry and electron density. Residues are color-coded according to the number of geometric quality criteria for which they contain at least one outlier: green = 0, yellow = 1, orange = 2 and red = 3 or more. A red dot above a residue indicates a poor fit to the electron density ($RSRZ > 2$). Stretches of 2 or more consecutive residues without any outlier are shown as a green connector. Residues present in the sample, but not in the model, are shown in grey.

- Molecule 1: 2-amino-4-hydroxy-6-hydroxymethyldihydropteridine pyrophosphokinase/dihydrophosphate synthase



- Molecule 1: 2-amino-4-hydroxy-6-hydroxymethyldihydropteridine pyrophosphokinase/dihydrophosphate synthase





4 Data and refinement statistics

Property	Value	Source
Space group	P 1	Depositor
Cell constants a, b, c, α , β , γ	42.52Å 58.47Å 109.33Å 82.00° 81.00° 68.08°	Depositor
Resolution (Å)	38.25 – 2.30 39.92 – 2.30	Depositor EDS
% Data completeness (in resolution range)	95.7 (38.25-2.30) 83.6 (39.92-2.30)	Depositor EDS
R_{merge}	0.13	Depositor
R_{sym}	(Not available)	Depositor
$\langle I/\sigma(I) \rangle$ ¹	3.71 (at 2.29Å)	Xtriage
Refinement program	PHENIX (phenix.refine: 1.5_2)	Depositor
R, R_{free}	0.241 , 0.294 0.242 , 0.295	Depositor DCC
R_{free} test set	2089 reflections (5.36%)	DCC
Wilson B-factor (Å ²)	36.7	Xtriage
Anisotropy	0.061	Xtriage
Bulk solvent k_{sol} (e/Å ³), B_{sol} (Å ²)	0.36 , 30.5	EDS
Estimated twinning fraction	0.108 for h,h-k,h-l	Xtriage
L-test for twinning ²	$\langle L \rangle = 0.48$, $\langle L^2 \rangle = 0.31$	Xtriage
Outliers	0 of 41113 reflections	Xtriage
F_o, F_c correlation	0.92	EDS
Total number of atoms	6506	wwPDB-VP
Average B, all atoms (Å ²)	40.0	wwPDB-VP

Xtriage's analysis on translational NCS is as follows: *The largest off-origin peak in the Patterson function is 8.38% of the height of the origin peak. No significant pseudotranslation is detected.*

¹Intensities estimated from amplitudes.

²Theoretical values of $\langle |L| \rangle$, $\langle L^2 \rangle$ for acentric reflections are 0.5, 0.375 respectively for untwinned datasets, and 0.333, 0.2 for perfectly twinned datasets.

5 Model quality

5.1 Standard geometry

Bond lengths and bond angles in the following residue types are not validated in this section: PH2, MG, APC

The Z score for a bond length (or angle) is the number of standard deviations the observed value is removed from the expected value. A bond length (or angle) with $|Z| > 5$ is considered an outlier worth inspection. RMSZ is the root-mean-square of all Z scores of the bond lengths (or angles).

Mol	Chain	Bond lengths		Bond angles	
		RMSZ	# Z >5	RMSZ	# Z >5
1	A	0.46	0/3255	0.63	0/4384
1	B	0.45	0/3160	0.60	0/4250
All	All	0.46	0/6415	0.62	0/8634

There are no bond length outliers.

There are no bond angle outliers.

There are no chirality outliers.

There are no planarity outliers.

5.2 Too-close contacts

In the following table, the Non-H and H(model) columns list the number of non-hydrogen atoms and hydrogen atoms in the chain respectively. The H(added) column lists the number of hydrogen atoms added and optimized by MolProbity. The Clashes column lists the number of clashes within the asymmetric unit, whereas Symm-Clashes lists symmetry related clashes.

Mol	Chain	Non-H	H(model)	H(added)	Clashes	Symm-Clashes
1	A	3208	0	3342	100	0
1	B	3119	0	3269	99	0
2	A	28	0	16	0	0
2	B	28	0	16	0	0
3	A	31	0	14	0	0
3	B	31	0	14	1	0
4	A	2	0	0	0	0
4	B	2	0	0	0	0
5	A	29	0	0	2	0
5	B	28	0	0	0	0
All	All	6506	0	6671	199	0

The all-atom clashscore is defined as the number of clashes found per 1000 atoms (including hydrogen atoms). The all-atom clashscore for this structure is 15.

The worst 5 of 199 close contacts within the same asymmetric unit are listed below, sorted by their clash magnitude.

Atom-1	Atom-2	Interatomic distance (Å)	Clash overlap (Å)
1:B:319:ILE:HD13	1:B:319:ILE:H	1.21	1.05
1:A:92:ALA:HB1	1:A:93:PRO:HD2	1.42	0.98
1:A:88:ARG:NH2	1:A:98:ARG:HH21	1.71	0.87
1:B:44:LYS:HE2	1:B:58:ARG:HH12	1.40	0.86
1:A:349:PHE:O	1:A:383:LYS:HE2	1.76	0.85

There are no symmetry-related clashes.

5.3 Torsion angles [i](#)

5.3.1 Protein backbone [i](#)

In the following table, the Percentiles column shows the percent Ramachandran outliers of the chain as a percentile score with respect to all X-ray entries followed by that with respect to entries of similar resolution.

The Analysed column shows the number of residues for which the backbone conformation was analysed, and the total number of residues.

Mol	Chain	Analysed	Favoured	Allowed	Outliers	Percentiles	
1	A	387/442 (88%)	357 (92%)	28 (7%)	2 (0%)	34	41
1	B	376/442 (85%)	349 (93%)	26 (7%)	1 (0%)	46	57
All	All	763/884 (86%)	706 (92%)	54 (7%)	3 (0%)	39	48

All (3) Ramachandran outliers are listed below:

Mol	Chain	Res	Type
1	A	169	ALA
1	A	282	ASN
1	B	147	VAL

5.3.2 Protein sidechains [i](#)

In the following table, the Percentiles column shows the percent sidechain outliers of the chain as a percentile score with respect to all X-ray entries followed by that with respect to entries of similar

resolution.

The Analysed column shows the number of residues for which the sidechain conformation was analysed, and the total number of residues.

Mol	Chain	Analysed	Rotameric	Outliers	Percentiles	
1	A	357/396 (90%)	325 (91%)	32 (9%)	12	14
1	B	348/396 (88%)	322 (92%)	26 (8%)	17	21
All	All	705/792 (89%)	647 (92%)	58 (8%)	14	17

5 of 58 residues with a non-rotameric sidechain are listed below:

Mol	Chain	Res	Type
1	A	338	ILE
1	B	0	HIS
1	B	334	LEU
1	A	359	ARG
1	A	392	ASP

Some sidechains can be flipped to improve hydrogen bonding and reduce clashes. 5 of 18 such sidechains are listed below:

Mol	Chain	Res	Type
1	B	0	HIS
1	B	11	ASN
1	B	269	HIS
1	A	303	ASN
1	A	342	ASN

5.3.3 RNA ⓘ

There are no RNA molecules in this entry.

5.4 Non-standard residues in protein, DNA, RNA chains ⓘ

There are no non-standard protein/DNA/RNA residues in this entry.

5.5 Carbohydrates ⓘ

There are no carbohydrates in this entry.

5.6 Ligand geometry

Of 10 ligands modelled in this entry, 4 are monoatomic - leaving 6 for Mogul analysis.

In the following table, the Counts columns list the number of bonds (or angles) for which Mogul statistics could be retrieved, the number of bonds (or angles) that are observed in the model and the number of bonds (or angles) that are defined in the chemical component dictionary. The Link column lists molecule types, if any, to which the group is linked. The Z score for a bond length (or angle) is the number of standard deviations the observed value is removed from the expected value. A bond length (or angle) with $|Z| > 2$ is considered an outlier worth inspection. RMSZ is the root-mean-square of all Z scores of the bond lengths (or angles).

Mol	Type	Chain	Res	Link	Bond lengths			Bond angles		
					Counts	RMSZ	# Z > 2	Counts	RMSZ	# Z > 2
2	PH2	A	423	4	11,15,15	2.69	4 (36%)	9,21,21	3.08	6 (66%)
2	PH2	A	424	-	11,15,15	2.94	4 (36%)	9,21,21	3.61	5 (55%)
3	APC	A	425	4	25,33,33	2.71	10 (40%)	30,52,52	2.95	9 (30%)
2	PH2	B	423	4	11,15,15	2.87	4 (36%)	9,21,21	3.27	6 (66%)
2	PH2	B	424	-	11,15,15	3.04	5 (45%)	9,21,21	3.45	6 (66%)
3	APC	B	425	4	25,33,33	2.88	9 (36%)	30,52,52	2.85	7 (23%)

In the following table, the Chirals column lists the number of chiral outliers, the number of chiral centers analysed, the number of these observed in the model and the number defined in the chemical component dictionary. Similar counts are reported in the Torsion and Rings columns. '-' means no outliers of that kind were identified.

Mol	Type	Chain	Res	Link	Chirals	Torsions	Rings
2	PH2	A	423	4	-	0/0/11/11	0/2/2/2
2	PH2	A	424	-	-	0/0/11/11	0/2/2/2
3	APC	A	425	4	-	0/15/38/38	0/3/3/3
2	PH2	B	423	4	-	0/0/11/11	0/2/2/2
2	PH2	B	424	-	-	0/0/11/11	0/2/2/2
3	APC	B	425	4	-	0/15/38/38	0/3/3/3

The worst 5 of 36 bond length outliers are listed below:

Mol	Chain	Res	Type	Atoms	Z	Observed(Å)	Ideal(Å)
2	A	423	PH2	C3-N4	-6.44	1.32	1.45
2	B	424	PH2	C3-N4	-6.41	1.32	1.45
2	B	423	PH2	C3-N4	-6.38	1.32	1.45
2	A	424	PH2	C3-N4	-6.18	1.33	1.45
3	A	425	APC	C5-C4	-3.09	1.33	1.40

The worst 5 of 39 bond angle outliers are listed below:

Mol	Chain	Res	Type	Atoms	Z	Observed(°)	Ideal(°)
3	A	425	APC	N3-C2-N1	-11.88	119.80	128.89
3	B	425	APC	N3-C2-N1	-11.50	120.09	128.89
3	A	425	APC	C1'-N9-C4	-4.16	120.67	126.94
3	B	425	APC	PG-O3B-PB	-3.74	120.14	132.67
2	B	424	PH2	C9-C8-N7	-3.71	118.51	123.59

There are no chirality outliers.

There are no torsion outliers.

There are no ring outliers.

1 monomer is involved in 1 short contact:

Mol	Chain	Res	Type	Clashes	Symm-Clashes
3	B	425	APC	1	0

5.7 Other polymers [i](#)

There are no such residues in this entry.

5.8 Polymer linkage issues [i](#)

There are no chain breaks in this entry.

6 Fit of model and data [i](#)

6.1 Protein, DNA and RNA chains [i](#)

In the following table, the column labelled ‘#RSRZ> 2’ contains the number (and percentage) of RSRZ outliers, followed by percent RSRZ outliers for the chain as percentile scores relative to all X-ray entries and entries of similar resolution. The OWAB column contains the minimum, median, 95th percentile and maximum values of the occupancy-weighted average B-factor per residue. The column labelled ‘Q< 0.9’ lists the number of (and percentage) of residues with an average occupancy less than 0.9.

Mol	Chain	Analysed	<RSRZ>	#RSRZ>2	OWAB(Å ²)	Q<0.9
1	A	397/442 (89%)	0.62	33 (8%) 14 20	22, 39, 64, 79	0
1	B	386/442 (87%)	0.51	21 (5%) 29 38	21, 37, 59, 72	0
All	All	783/884 (88%)	0.57	54 (6%) 20 27	21, 38, 62, 79	0

The worst 5 of 54 RSRZ outliers are listed below:

Mol	Chain	Res	Type	RSRZ
1	B	422	ILE	6.3
1	A	90	LEU	5.6
1	A	94	ALA	5.2
1	A	95	TRP	5.0
1	A	326	ILE	4.8

6.2 Non-standard residues in protein, DNA, RNA chains [i](#)

There are no non-standard protein/DNA/RNA residues in this entry.

6.3 Carbohydrates [i](#)

There are no carbohydrates in this entry.

6.4 Ligands [i](#)

In the following table, the Atoms column lists the number of modelled atoms in the group and the number defined in the chemical component dictionary. LLDF column lists the quality of electron density of the group with respect to its neighbouring residues in protein, DNA or RNA chains. The B-factors column lists the minimum, median, 95th percentile and maximum values of B factors of atoms in the group. The column labelled ‘Q< 0.9’ lists the number of atoms with occupancy less than 0.9.

Mol	Type	Chain	Res	Atoms	RSCC	RSR	LLDF	B-factors(\AA^2)	Q<0.9
4	MG	A	426	1/1	0.94	0.23	1.02	35,35,35,35	0
4	MG	B	426	1/1	0.94	0.15	-0.31	30,30,30,30	0
2	PH2	B	424	14/14	0.88	0.16	-0.40	29,37,40,41	0
2	PH2	A	423	14/14	0.95	0.15	-0.41	22,29,37,38	0
3	APC	A	425	31/31	0.97	0.14	-0.66	24,30,37,40	0
2	PH2	A	424	14/14	0.85	0.16	-0.70	37,41,47,49	0
3	APC	B	425	31/31	0.95	0.14	-0.79	28,33,39,43	0
2	PH2	B	423	14/14	0.95	0.14	-1.18	24,29,34,36	0
4	MG	A	427	1/1	0.96	0.19	-	35,35,35,35	0
4	MG	B	427	1/1	0.56	0.19	-	38,38,38,38	0

6.5 Other polymers [i](#)

There are no such residues in this entry.