



wwPDB X-ray Structure Validation Summary Report ⓘ

Feb 1, 2016 – 10:39 AM GMT

PDB ID : 3MKS
Title : Crystal Structure of yeast Cdc4/Skp1 in complex with an allosteric inhibitor SCF-I2
Authors : Orlicky, S.; Sicheri, F.; Tyers, M.; Tang, X.
Deposited on : 2010-04-15
Resolution : 2.60 Å(reported)

This is a wwPDB X-ray Structure Validation Summary Report for a publicly released PDB entry.
We welcome your comments at validation@mail.wwpdb.org
A user guide is available at
<http://wwpdb.org/validation/2016/XrayValidationReportHelp>
with specific help available everywhere you see the ⓘ symbol.

The following versions of software and data (see [references ⓘ](#)) were used in the production of this report:

MolProbity : 4.02b-467
Mogul : 1.7 (RC4), CSD as536be (2015)
Xtriage (Phenix) : 1.9-1692
EDS : rb-20026688
Percentile statistics : 20151230.v01 (using entries in the PDB archive December 30th 2015)
Refmac : 5.8.0135
CCP4 : 6.5.0
Ideal geometry (proteins) : Engh & Huber (2001)
Ideal geometry (DNA, RNA) : Parkinson et al. (1996)
Validation Pipeline (wwPDB-VP) : trunk26865

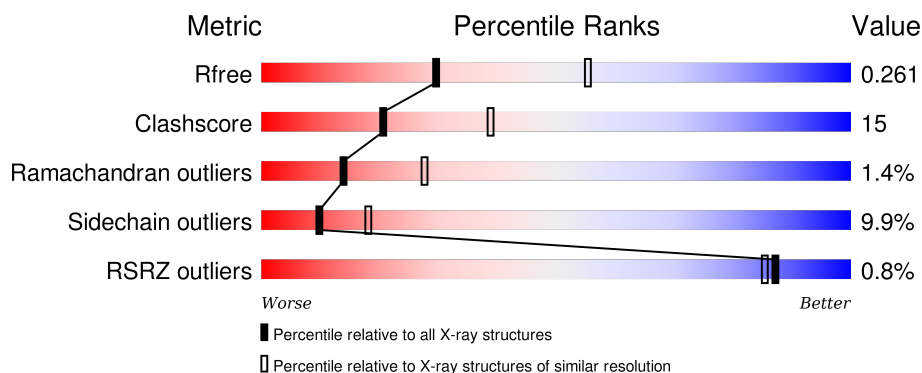
1 Overall quality at a glance

The following experimental techniques were used to determine the structure:

X-RAY DIFFRACTION

The reported resolution of this entry is 2.60 Å.

Percentile scores (ranging between 0-100) for global validation metrics of the entry are shown in the following graphic. The table shows the number of entries on which the scores are based.



Metric	Whole archive (#Entries)	Similar resolution (#Entries, resolution range(Å))
R_{free}	91344	2328 (2.60-2.60)
Clashscore	102246	2679 (2.60-2.60)
Ramachandran outliers	100387	2635 (2.60-2.60)
Sidechain outliers	100360	2635 (2.60-2.60)
RSRZ outliers	91569	2334 (2.60-2.60)

The table below summarises the geometric issues observed across the polymeric chains and their fit to the electron density. The red, orange, yellow and green segments on the lower bar indicate the fraction of residues that contain outliers for ≥ 3 , 2, 1 and 0 types of geometric quality criteria. A grey segment represents the fraction of residues that are not modelled. The numeric value for each fraction is indicated below the corresponding segment, with a dot representing fractions $\leq 5\%$. The upper red bar (where present) indicates the fraction of residues that have poor fit to the electron density. The numeric value is given above the bar.

Mol	Chain	Length	Quality of chain
1	A	169	<div> <div>3%</div> <div> <div></div> <div>50%</div> <div>28%</div> <div>•</div> <div>21%</div> </div> </div>
1	C	169	<div> <div>%</div> <div> <div></div> <div>53%</div> <div>21%</div> <div>• •</div> <div>22%</div> </div> </div>
2	B	464	<div> <div>%</div> <div> <div></div> <div>58%</div> <div>32%</div> <div>5%</div> <div>• •</div> </div> </div>
2	D	464	<div> <div></div> <div> <div></div> <div>66%</div> <div>24%</div> <div>5%</div> <div>• •</div> </div> </div>

The following table lists non-polymeric compounds, carbohydrate monomers and non-standard

residues in protein, DNA, RNA chains that are outliers for geometric or electron-density-fit criteria:

Mol	Type	Chain	Res	Chirality	Geometry	Clashes	Electron density
3	SO4	D	2	-	-	-	X

2 Entry composition

There are 6 unique types of molecules in this entry. The entry contains 9456 atoms, of which 0 are hydrogens and 0 are deuteriums.

In the tables below, the ZeroOcc column contains the number of atoms modelled with zero occupancy, the AltConf column contains the number of residues with at least one atom in alternate conformation and the Trace column contains the number of residues modelled with at most 2 atoms.

- Molecule 1 is a protein called Suppressor of kinetochore protein 1.

Mol	Chain	Residues	Atoms					ZeroOcc	AltConf	Trace
1	A	134	Total	C	N	O	S	0	0	0
			1083	686	188	205	4			
1	C	132	Total	C	N	O	S	0	0	0
			1073	681	189	199	4			

There are 64 discrepancies between the modelled and reference sequences:

Chain	Residue	Modelled	Actual	Comment	Reference
A	-2	GLY	-	EXPRESSION TAG	UNP P52286
A	-1	ALA	-	EXPRESSION TAG	UNP P52286
A	0	HIS	-	EXPRESSION TAG	UNP P52286
A	1	MET	-	EXPRESSION TAG	UNP P52286
A	?	-	HIS	DELETION	UNP P52286
A	?	-	ASP	DELETION	UNP P52286
A	?	-	SER	DELETION	UNP P52286
A	?	-	ASN	DELETION	UNP P52286
A	?	-	LEU	DELETION	UNP P52286
A	?	-	GLN	DELETION	UNP P52286
A	?	-	ASN	DELETION	UNP P52286
A	?	-	ASN	DELETION	UNP P52286
A	?	-	SER	DELETION	UNP P52286
A	?	-	ASP	DELETION	UNP P52286
A	?	-	SER	DELETION	UNP P52286
A	?	-	GLU	DELETION	UNP P52286
A	?	-	SER	DELETION	UNP P52286
A	?	-	ASP	DELETION	UNP P52286
A	?	-	SER	DELETION	UNP P52286
A	?	-	ASP	DELETION	UNP P52286
A	?	-	SER	DELETION	UNP P52286
A	?	-	GLU	DELETION	UNP P52286
A	?	-	THR	DELETION	UNP P52286
A	?	-	ASN	DELETION	UNP P52286
A	?	-	HIS	DELETION	UNP P52286

Continued on next page...

Continued from previous page...

Chain	Residue	Modelled	Actual	Comment	Reference
A	?	-	LYS	DELETION	UNP P52286
A	?	-	SER	DELETION	UNP P52286
A	?	-	LYS	DELETION	UNP P52286
A	?	-	ASP	DELETION	UNP P52286
A	?	-	ASN	DELETION	UNP P52286
A	?	-	ASN	DELETION	UNP P52286
A	?	-	ASN	DELETION	UNP P52286
C	-2	GLY	-	EXPRESSION TAG	UNP P52286
C	-1	ALA	-	EXPRESSION TAG	UNP P52286
C	0	HIS	-	EXPRESSION TAG	UNP P52286
C	1	MET	-	EXPRESSION TAG	UNP P52286
C	?	-	HIS	DELETION	UNP P52286
C	?	-	ASP	DELETION	UNP P52286
C	?	-	SER	DELETION	UNP P52286
C	?	-	ASN	DELETION	UNP P52286
C	?	-	LEU	DELETION	UNP P52286
C	?	-	GLN	DELETION	UNP P52286
C	?	-	ASN	DELETION	UNP P52286
C	?	-	ASN	DELETION	UNP P52286
C	?	-	SER	DELETION	UNP P52286
C	?	-	ASP	DELETION	UNP P52286
C	?	-	SER	DELETION	UNP P52286
C	?	-	GLU	DELETION	UNP P52286
C	?	-	SER	DELETION	UNP P52286
C	?	-	ASP	DELETION	UNP P52286
C	?	-	SER	DELETION	UNP P52286
C	?	-	ASP	DELETION	UNP P52286
C	?	-	SER	DELETION	UNP P52286
C	?	-	GLU	DELETION	UNP P52286
C	?	-	THR	DELETION	UNP P52286
C	?	-	ASN	DELETION	UNP P52286
C	?	-	HIS	DELETION	UNP P52286
C	?	-	LYS	DELETION	UNP P52286
C	?	-	SER	DELETION	UNP P52286
C	?	-	LYS	DELETION	UNP P52286
C	?	-	ASP	DELETION	UNP P52286
C	?	-	ASN	DELETION	UNP P52286
C	?	-	ASN	DELETION	UNP P52286
C	?	-	ASN	DELETION	UNP P52286

- Molecule 2 is a protein called Cell division control protein 4.

Mol	Chain	Residues	Atoms					ZeroOcc	AltConf	Trace
2	B	444	Total 3582	C 2296	N 618	O 656	S 12	0	0	0
2	D	445	Total 3591	C 2301	N 620	O 658	S 12	0	0	0

There are 46 discrepancies between the modelled and reference sequences:

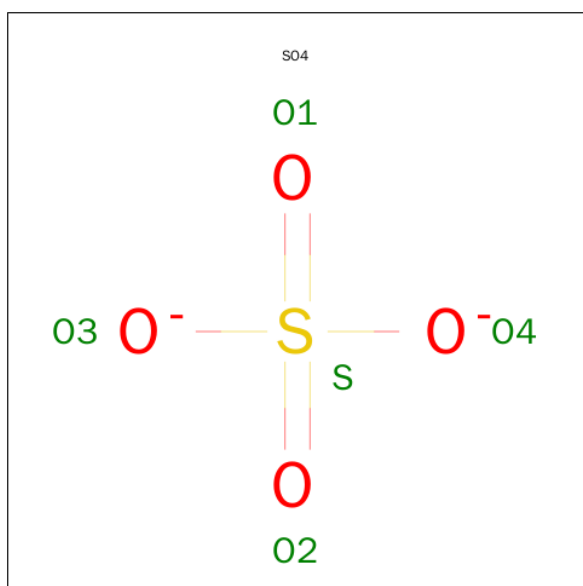
Chain	Residue	Modelled	Actual	Comment	Reference
B	261	GLY	-	EXPRESSION TAG	UNP P07834
B	262	ALA	-	EXPRESSION TAG	UNP P07834
B	460	GLU	LYS	SEE REMARK 999	UNP P07834
B	?	-	ASN	DELETION	UNP P07834
B	?	-	ILE	DELETION	UNP P07834
B	?	-	TRP	DELETION	UNP P07834
B	?	-	ASN	DELETION	UNP P07834
B	?	-	CYS	DELETION	UNP P07834
B	?	-	SER	DELETION	UNP P07834
B	?	-	TYR	DELETION	UNP P07834
B	?	-	ALA	DELETION	UNP P07834
B	?	-	THR	DELETION	UNP P07834
B	?	-	ASN	DELETION	UNP P07834
B	?	-	SER	DELETION	UNP P07834
B	?	-	ALA	DELETION	UNP P07834
B	?	-	SER	DELETION	UNP P07834
B	?	-	PRO	DELETION	UNP P07834
B	?	-	CYS	DELETION	UNP P07834
B	?	-	ALA	DELETION	UNP P07834
B	?	-	LYS	DELETION	UNP P07834
B	?	-	ILE	DELETION	UNP P07834
B	?	-	GLY	DELETION	UNP P07834
B	?	-	ALA	DELETION	UNP P07834
D	261	GLY	-	EXPRESSION TAG	UNP P07834
D	262	ALA	-	EXPRESSION TAG	UNP P07834
D	460	GLU	LYS	SEE REMARK 999	UNP P07834
D	?	-	ASN	DELETION	UNP P07834
D	?	-	ILE	DELETION	UNP P07834
D	?	-	TRP	DELETION	UNP P07834
D	?	-	ASN	DELETION	UNP P07834
D	?	-	CYS	DELETION	UNP P07834
D	?	-	SER	DELETION	UNP P07834
D	?	-	TYR	DELETION	UNP P07834
D	?	-	ALA	DELETION	UNP P07834
D	?	-	THR	DELETION	UNP P07834

Continued on next page...

Continued from previous page...

Chain	Residue	Modelled	Actual	Comment	Reference
D	?	-	ASN	DELETION	UNP P07834
D	?	-	SER	DELETION	UNP P07834
D	?	-	ALA	DELETION	UNP P07834
D	?	-	SER	DELETION	UNP P07834
D	?	-	PRO	DELETION	UNP P07834
D	?	-	CYS	DELETION	UNP P07834
D	?	-	ALA	DELETION	UNP P07834
D	?	-	LYS	DELETION	UNP P07834
D	?	-	ILE	DELETION	UNP P07834
D	?	-	GLY	DELETION	UNP P07834
D	?	-	ALA	DELETION	UNP P07834

- Molecule 3 is SULFATE ION (three-letter code: SO4) (formula: O₄S).



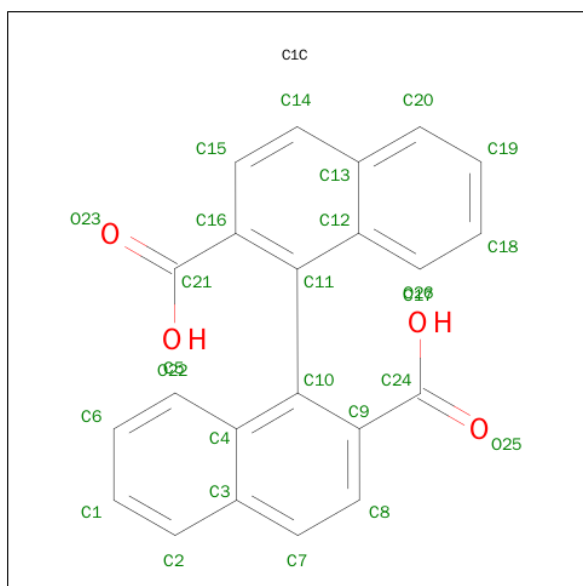
Mol	Chain	Residues	Atoms	ZeroOcc	AltConf
3	B	1	Total O S 5 4 1	0	0
3	B	1	Total O S 5 4 1	0	0
3	B	1	Total O S 5 4 1	0	0
3	B	1	Total O S 5 4 1	0	0
3	B	1	Total O S 5 4 1	0	0
3	D	1	Total O S 5 4 1	0	0

Continued on next page...

Continued from previous page...

Mol	Chain	Residues	Atoms			ZeroOcc	AltConf
3	D	1	Total	O	S	0	0
			5	4	1		
3	D	1	Total	O	S	0	0
			5	4	1		
3	D	1	Total	O	S	0	0
			5	4	1		
3	D	1	Total	O	S	0	0
			5	4	1		
3	D	1	Total	O	S	0	0
			5	4	1		

- Molecule 4 is 1,1'-BINAPHTHALENE-2,2'-DICARBOXYLIC ACID (three-letter code: C1C) (formula: C₂₂H₁₄O₄).



Mol	Chain	Residues	Atoms			ZeroOcc	AltConf
4	D	1	Total	C	O	0	0
			26	22	4		

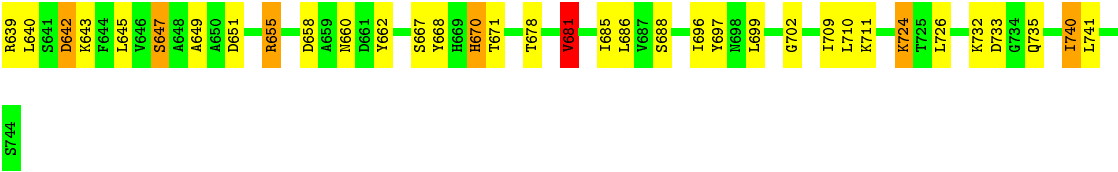
- Molecule 5 is GLYCEROL (three-letter code: GOL) (formula: C₃H₈O₃).



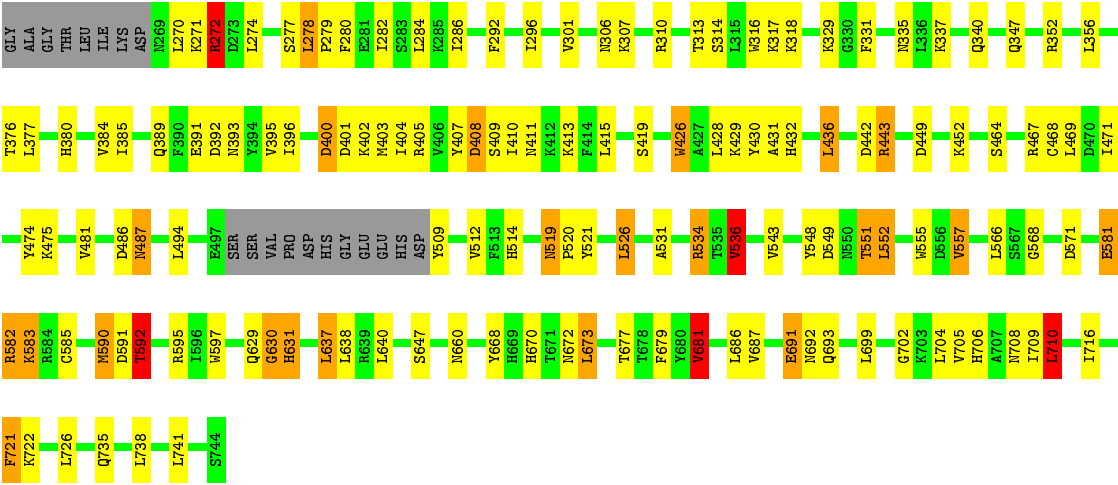
Mol	Chain	Residues	Atoms			ZeroOcc	AltConf
5	D	1	Total	C	O	0	0
			6	3	3		

- Molecule 6 is water.

Mol	Chain	Residues	Atoms		ZeroOcc	AltConf
6	A	4	Total	O	0	0
			4	4		
6	B	22	Total	O	0	0
			22	22		
6	C	4	Total	O	0	0
			4	4		
6	D	10	Total	O	0	0
			10	10		



● Molecule 2: Cell division control protein 4



4 Data and refinement statistics

Property	Value	Source
Space group	P 32	Depositor
Cell constants a, b, c, α , β , γ	108.28Å 108.28Å 165.59Å 90.00° 90.00° 120.00°	Depositor
Resolution (Å)	93.66 – 2.60 20.45 – 2.60	Depositor EDS
% Data completeness (in resolution range)	99.8 (93.66-2.60) 99.9 (20.45-2.60)	Depositor EDS
R_{merge}	0.06	Depositor
R_{sym}	(Not available)	Depositor
$\langle I/\sigma(I) \rangle$ ¹	2.69 (at 2.60Å)	Xtriage
Refinement program	REFMAC 5.5.0109	Depositor
R, R_{free}	0.211 , 0.266 0.209 , 0.261	Depositor DCC
R_{free} test set	3375 reflections (5.33%)	DCC
Wilson B-factor (Å ²)	53.2	Xtriage
Anisotropy	0.032	Xtriage
Bulk solvent k_{sol} (e/Å ³), B_{sol} (Å ²)	0.32 , 20.1	EDS
Estimated twinning fraction	0.210 for -h,-k,l 0.076 for h,-h-k,-l 0.075 for -k,-h,-l	Xtriage
L-test for twinning ²	$\langle L \rangle = 0.42$, $\langle L^2 \rangle = 0.24$	Xtriage
Outliers	0 of 66643 reflections	Xtriage
F_o, F_c correlation	0.96	EDS
Total number of atoms	9456	wwPDB-VP
Average B, all atoms (Å ²)	54.0	wwPDB-VP

Xtriage's analysis on translational NCS is as follows: *The largest off-origin peak in the Patterson function is 2.79% of the height of the origin peak. No significant pseudotranslation is detected.*

¹ Intensities estimated from amplitudes.

² Theoretical values of $\langle |L| \rangle$, $\langle L^2 \rangle$ for acentric reflections are 0.5, 0.375 respectively for untwinned datasets, and 0.333, 0.2 for perfectly twinned datasets.

5 Model quality

5.1 Standard geometry

Bond lengths and bond angles in the following residue types are not validated in this section: C1C, GOL, SO4

The Z score for a bond length (or angle) is the number of standard deviations the observed value is removed from the expected value. A bond length (or angle) with $|Z| > 5$ is considered an outlier worth inspection. RMSZ is the root-mean-square of all Z scores of the bond lengths (or angles).

Mol	Chain	Bond lengths		Bond angles	
		RMSZ	# $ Z > 5$	RMSZ	# $ Z > 5$
1	A	0.76	0/1101	0.83	0/1487
1	C	1.04	2/1091 (0.2%)	1.04	3/1473 (0.2%)
2	B	0.88	1/3663 (0.0%)	0.96	11/4957 (0.2%)
2	D	0.97	3/3672 (0.1%)	1.03	16/4969 (0.3%)
All	All	0.93	6/9527 (0.1%)	0.98	30/12886 (0.2%)

Chiral center outliers are detected by calculating the chiral volume of a chiral center and verifying if the center is modelled as a planar moiety or with the opposite hand. A planarity outlier is detected by checking planarity of atoms in a peptide group, atoms in a mainchain group or atoms of a sidechain that are expected to be planar.

Mol	Chain	#Chirality outliers	#Planarity outliers
2	D	0	1

The worst 5 of 6 bond length outliers are listed below:

Mol	Chain	Res	Type	Atoms	Z	Observed(Å)	Ideal(Å)
1	C	156	GLU	CG-CD	8.81	1.65	1.51
2	D	721	PHE	CE2-CZ	6.29	1.49	1.37
2	D	391	GLU	CD-OE2	5.71	1.31	1.25
2	D	581	GLU	CG-CD	5.61	1.60	1.51
1	C	156	GLU	CB-CG	5.58	1.62	1.52

The worst 5 of 30 bond angle outliers are listed below:

Mol	Chain	Res	Type	Atoms	Z	Observed(°)	Ideal(°)
1	C	167	ARG	NE-CZ-NH2	-8.66	115.97	120.30
2	D	681	VAL	CB-CA-C	-7.25	97.62	111.40
2	D	571	ASP	CB-CG-OD1	6.94	124.54	118.30
2	D	356	LEU	CB-CG-CD1	-6.92	99.23	111.00

Continued on next page...

Continued from previous page...

Mol	Chain	Res	Type	Atoms	Z	Observed(°)	Ideal(°)
1	C	141	LEU	CA-CB-CG	6.50	130.26	115.30

There are no chirality outliers.

All (1) planarity outliers are listed below:

Mol	Chain	Res	Type	Group
2	D	509	TYR	Peptide

5.2 Too-close contacts [i](#)

In the following table, the Non-H and H(model) columns list the number of non-hydrogen atoms and hydrogen atoms in the chain respectively. The H(added) column lists the number of hydrogen atoms added and optimized by MolProbity. The Clashes column lists the number of clashes within the asymmetric unit, whereas Symm-Clashes lists symmetry related clashes.

Mol	Chain	Non-H	H(model)	H(added)	Clashes	Symm-Clashes
1	A	1083	0	1084	38	0
1	C	1073	0	1082	39	0
2	B	3582	0	3581	119	0
2	D	3591	0	3589	94	0
3	B	25	0	0	2	0
3	D	30	0	0	0	0
4	D	26	0	12	0	0
5	D	6	0	8	0	0
6	A	4	0	0	1	0
6	B	22	0	0	2	0
6	C	4	0	0	0	0
6	D	10	0	0	0	0
All	All	9456	0	9356	273	0

The all-atom clashscore is defined as the number of clashes found per 1000 atoms (including hydrogen atoms). The all-atom clashscore for this structure is 15.

The worst 5 of 273 close contacts within the same asymmetric unit are listed below, sorted by their clash magnitude.

Atom-1	Atom-2	Interatomic distance (Å)	Clash overlap (Å)
1:C:86:VAL:HG22	1:C:130:MET:CE	1.63	1.29
1:C:86:VAL:HG22	1:C:130:MET:HE1	1.20	1.14
1:C:121:ARG:HG3	1:C:121:ARG:HH11	0.99	1.12

Continued on next page...

Continued from previous page...

Atom-1	Atom-2	Interatomic distance (Å)	Clash overlap (Å)
2:D:629:GLN:HG2	2:D:630:GLY:HA3	1.34	1.08
1:A:86:VAL:HG22	1:A:130:MET:CE	1.87	1.05

There are no symmetry-related clashes.

5.3 Torsion angles [i](#)

5.3.1 Protein backbone [i](#)

In the following table, the Percentiles column shows the percent Ramachandran outliers of the chain as a percentile score with respect to all X-ray entries followed by that with respect to entries of similar resolution.

The Analysed column shows the number of residues for which the backbone conformation was analysed, and the total number of residues.

Mol	Chain	Analysed	Favoured	Allowed	Outliers	Percentiles	
1	A	128/169 (76%)	112 (88%)	14 (11%)	2 (2%)	12	24
1	C	126/169 (75%)	119 (94%)	5 (4%)	2 (2%)	12	24
2	B	440/464 (95%)	404 (92%)	27 (6%)	9 (2%)	9	18
2	D	441/464 (95%)	418 (95%)	20 (4%)	3 (1%)	26	51
All	All	1135/1266 (90%)	1053 (93%)	66 (6%)	16 (1%)	14	28

5 of 16 Ramachandran outliers are listed below:

Mol	Chain	Res	Type
1	A	103	PRO
2	B	462	HIS
2	B	476	ASN
2	B	711	LYS
1	C	116	VAL

5.3.2 Protein sidechains [i](#)

In the following table, the Percentiles column shows the percent sidechain outliers of the chain as a percentile score with respect to all X-ray entries followed by that with respect to entries of similar resolution.

The Analysed column shows the number of residues for which the sidechain conformation was analysed, and the total number of residues.

Mol	Chain	Analysed	Rotameric	Outliers	Percentiles	
1	A	121/152 (80%)	110 (91%)	11 (9%)	12	22
1	C	120/152 (79%)	109 (91%)	11 (9%)	11	21
2	B	400/416 (96%)	352 (88%)	48 (12%)	6	11
2	D	401/416 (96%)	368 (92%)	33 (8%)	14	27
All	All	1042/1136 (92%)	939 (90%)	103 (10%)	10	18

5 of 103 residues with a non-rotameric sidechain are listed below:

Mol	Chain	Res	Type
2	B	640	LEU
2	B	735	GLN
2	D	693	GLN
2	B	642	ASP
2	B	671	THR

Some sidechains can be flipped to improve hydrogen bonding and reduce clashes. 5 of 41 such sidechains are listed below:

Mol	Chain	Res	Type
2	B	692	ASN
1	C	31	ASN
2	D	629	GLN
2	B	695	ASN
2	B	706	HIS

5.3.3 RNA ⓘ

There are no RNA molecules in this entry.

5.4 Non-standard residues in protein, DNA, RNA chains ⓘ

There are no non-standard protein/DNA/RNA residues in this entry.

5.5 Carbohydrates ⓘ

There are no carbohydrates in this entry.

5.6 Ligand geometry ⓘ

13 ligands are modelled in this entry.

In the following table, the Counts columns list the number of bonds (or angles) for which Mogul statistics could be retrieved, the number of bonds (or angles) that are observed in the model and the number of bonds (or angles) that are defined in the chemical component dictionary. The Link column lists molecule types, if any, to which the group is linked. The Z score for a bond length (or angle) is the number of standard deviations the observed value is removed from the expected value. A bond length (or angle) with $|Z| > 2$ is considered an outlier worth inspection. RMSZ is the root-mean-square of all Z scores of the bond lengths (or angles).

Mol	Type	Chain	Res	Link	Bond lengths			Bond angles		
					Counts	RMSZ	# $ Z > 2$	Counts	RMSZ	# $ Z > 2$
3	SO4	B	1	-	4,4,4	0.23	0	6,6,6	0.42	0
3	SO4	B	3	-	4,4,4	0.43	0	6,6,6	0.47	0
3	SO4	B	4	-	4,4,4	0.33	0	6,6,6	0.39	0
3	SO4	B	6	-	4,4,4	0.35	0	6,6,6	0.60	0
3	SO4	B	7	-	4,4,4	0.57	0	6,6,6	1.64	1 (16%)
4	C1C	D	1	-	23,29,29	1.39	2 (8%)	34,42,42	1.70	8 (23%)
3	SO4	D	10	-	4,4,4	0.37	0	6,6,6	0.32	0
3	SO4	D	11	-	4,4,4	0.48	0	6,6,6	1.29	1 (16%)
3	SO4	D	2	-	4,4,4	0.58	0	6,6,6	0.67	0
3	SO4	D	5	-	4,4,4	0.32	0	6,6,6	0.36	0
5	GOL	D	745	-	5,5,5	0.34	0	5,5,5	0.99	0
3	SO4	D	8	-	4,4,4	0.29	0	6,6,6	0.49	0
3	SO4	D	9	-	4,4,4	0.22	0	6,6,6	0.44	0

In the following table, the Chirals column lists the number of chiral outliers, the number of chiral centers analysed, the number of these observed in the model and the number defined in the chemical component dictionary. Similar counts are reported in the Torsion and Rings columns. '-' means no outliers of that kind were identified.

Mol	Type	Chain	Res	Link	Chirals	Torsions	Rings
3	SO4	B	1	-	-	0/0/0/0	0/0/0/0
3	SO4	B	3	-	-	0/0/0/0	0/0/0/0
3	SO4	B	4	-	-	0/0/0/0	0/0/0/0
3	SO4	B	6	-	-	0/0/0/0	0/0/0/0
3	SO4	B	7	-	-	0/0/0/0	0/0/0/0
4	C1C	D	1	-	-	0/4/12/12	0/4/4/4
3	SO4	D	10	-	-	0/0/0/0	0/0/0/0
3	SO4	D	11	-	-	0/0/0/0	0/0/0/0
3	SO4	D	2	-	-	0/0/0/0	0/0/0/0
3	SO4	D	5	-	-	0/0/0/0	0/0/0/0
5	GOL	D	745	-	-	0/4/4/4	0/0/0/0

Continued on next page...

Continued from previous page...

Mol	Type	Chain	Res	Link	Chirals	Torsions	Rings
3	SO4	D	8	-	-	0/0/0/0	0/0/0/0
3	SO4	D	9	-	-	0/0/0/0	0/0/0/0

All (2) bond length outliers are listed below:

Mol	Chain	Res	Type	Atoms	Z	Observed(Å)	Ideal(Å)
4	D	1	C1C	C10-C11	-3.89	1.41	1.50
4	D	1	C1C	C12-C13	-2.31	1.38	1.42

The worst 5 of 10 bond angle outliers are listed below:

Mol	Chain	Res	Type	Atoms	Z	Observed(°)	Ideal(°)
4	D	1	C1C	C9-C10-C4	-4.19	116.47	119.57
3	B	7	SO4	O2-S-O1	-3.35	98.88	109.50
4	D	1	C1C	C15-C16-C21	-3.25	115.23	120.23
4	D	1	C1C	C16-C11-C12	-2.69	117.58	119.57
4	D	1	C1C	C8-C7-C3	-2.45	117.03	120.83

There are no chirality outliers.

There are no torsion outliers.

There are no ring outliers.

2 monomers are involved in 2 short contacts:

Mol	Chain	Res	Type	Clashes	Symm-Clashes
3	B	1	SO4	1	0
3	B	7	SO4	1	0

5.7 Other polymers [i](#)

There are no such residues in this entry.

5.8 Polymer linkage issues [i](#)

There are no chain breaks in this entry.

6 Fit of model and data [i](#)

6.1 Protein, DNA and RNA chains [i](#)

In the following table, the column labelled ‘#RSRZ> 2’ contains the number (and percentage) of RSRZ outliers, followed by percent RSRZ outliers for the chain as percentile scores relative to all X-ray entries and entries of similar resolution. The OWAB column contains the minimum, median, 95th percentile and maximum values of the occupancy-weighted average B-factor per residue. The column labelled ‘Q< 0.9’ lists the number of (and percentage) of residues with an average occupancy less than 0.9.

Mol	Chain	Analysed	<RSRZ>	#RSRZ>2	OWAB(Å ²)	Q<0.9
1	A	134/169 (79%)	0.11	5 (3%) 45 37	45, 73, 108, 119	0
1	C	132/169 (78%)	-0.06	1 (0%) 87 85	32, 49, 83, 98	0
2	B	444/464 (95%)	-0.04	3 (0%) 89 87	32, 56, 89, 110	0
2	D	445/464 (95%)	-0.09	0 100 100	28, 43, 65, 89	0
All	All	1155/1266 (91%)	-0.04	9 (0%) 87 85	28, 51, 89, 119	0

The worst 5 of 9 RSRZ outliers are listed below:

Mol	Chain	Res	Type	RSRZ
2	B	631	HIS	3.7
1	A	104	ASP	3.3
2	B	509	TYR	3.3
1	A	75	ILE	3.0
2	B	533	VAL	2.9

6.2 Non-standard residues in protein, DNA, RNA chains [i](#)

There are no non-standard protein/DNA/RNA residues in this entry.

6.3 Carbohydrates [i](#)

There are no carbohydrates in this entry.

6.4 Ligands [i](#)

In the following table, the Atoms column lists the number of modelled atoms in the group and the number defined in the chemical component dictionary. LLDF column lists the quality of electron density of the group with respect to its neighbouring residues in protein, DNA or RNA chains. The B-factors column lists the minimum, median, 95th percentile and maximum values of B factors

of atoms in the group. The column labelled 'Q< 0.9' lists the number of atoms with occupancy less than 0.9.

Mol	Type	Chain	Res	Atoms	RSCC	RSR	LLDF	B-factors(Å ²)	Q<0.9
3	SO4	D	2	5/5	0.95	0.35	21.21	68,70,73,74	0
5	GOL	D	745	6/6	0.92	0.18	-0.04	43,44,47,51	0
4	C1C	D	1	26/26	0.98	0.15	-0.31	37,42,50,57	0
3	SO4	D	9	5/5	0.95	0.15	-0.56	75,75,75,76	0
3	SO4	B	1	5/5	0.93	0.16	-0.57	74,76,77,77	0
3	SO4	B	7	5/5	0.95	0.14	-1.25	53,59,61,62	0
3	SO4	D	11	5/5	0.95	0.14	-1.35	71,74,76,76	0
3	SO4	D	5	5/5	0.98	0.13	-1.61	53,56,57,57	0
3	SO4	B	6	5/5	0.98	0.12	-1.91	57,58,58,59	0
3	SO4	B	4	5/5	0.94	0.11	-2.95	60,61,64,66	0
3	SO4	B	3	5/5	0.88	0.19	-	73,77,79,79	0
3	SO4	D	8	5/5	0.95	0.13	-	65,66,69,69	0
3	SO4	D	10	5/5	0.93	0.13	-	68,71,73,74	0

6.5 Other polymers [i](#)

There are no such residues in this entry.