



Full wwPDB X-ray Structure Validation Report ⓘ

Feb 1, 2016 – 06:47 PM GMT

PDB ID : 4MRO
Title : Human GKRP bound to AMG-5980 and S6P
Authors : St Jean, D.J.; Ashton, K.S.; Bartberger, M.D.; Chen, J.; Chmait, S.; Cupples, R.; Galbreath, E.; Helmering, J.; Jordan, S.R.; Liu, L.; Kunz, K.; Michelsen, K.; Nishimura, N.; Pennington, L.D.; Poon, S.F.; Sivits, G.; Stec, M.M.; Tamayo, N.; Van, G.; Yang, K.; Norman, M.H.; Fotsch, C.; LLoyd, D.J.; Hale, C.
Deposited on : 2013-09-17
Resolution : 2.20 Å(reported)

This is a Full wwPDB X-ray Structure Validation Report for a publicly released PDB entry.
We welcome your comments at validation@mail.wwpdb.org
A user guide is available at
<http://wwpdb.org/validation/2016/XrayValidationReportHelp>
with specific help available everywhere you see the ⓘ symbol.

The following versions of software and data (see [references ⓘ](#)) were used in the production of this report:

MolProbity : 4.02b-467
Mogul : 1.7 (RC4), CSD as536be (2015)
Xtriage (Phenix) : 1.9-1692
EDS : rb-20026688
Percentile statistics : 20151230.v01 (using entries in the PDB archive December 30th 2015)
Refmac : 5.8.0135
CCP4 : 6.5.0
Ideal geometry (proteins) : Engh & Huber (2001)
Ideal geometry (DNA, RNA) : Parkinson et al. (1996)
Validation Pipeline (wwPDB-VP) : trunk26865

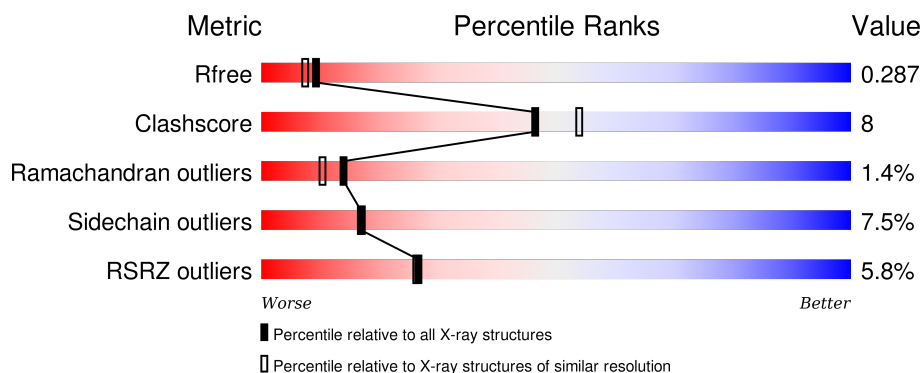
1 Overall quality at a glance

The following experimental techniques were used to determine the structure:

X-RAY DIFFRACTION

The reported resolution of this entry is 2.20 Å.

Percentile scores (ranging between 0-100) for global validation metrics of the entry are shown in the following graphic. The table shows the number of entries on which the scores are based.



Metric	Whole archive (#Entries)	Similar resolution (#Entries, resolution range(Å))
R_{free}	91344	3774 (2.20-2.20)
Clashscore	102246	4477 (2.20-2.20)
Ramachandran outliers	100387	4404 (2.20-2.20)
Sidechain outliers	100360	4405 (2.20-2.20)
RSRZ outliers	91569	3781 (2.20-2.20)

The table below summarises the geometric issues observed across the polymeric chains and their fit to the electron density. The red, orange, yellow and green segments on the lower bar indicate the fraction of residues that contain outliers for ≥ 3 , 2, 1 and 0 types of geometric quality criteria. A grey segment represents the fraction of residues that are not modelled. The numeric value for each fraction is indicated below the corresponding segment, with a dot representing fractions $\leq 5\%$. The upper red bar (where present) indicates the fraction of residues that have poor fit to the electron density. The numeric value is given above the bar.

Mol	Chain	Length	Quality of chain
1	A	636	
1	B	636	

The following table lists non-polymeric compounds, carbohydrate monomers and non-standard residues in protein, DNA, RNA chains that are outliers for geometric or electron-density-fit criteria:

Mol	Type	Chain	Res	Chirality	Geometry	Clashes	Electron density
4	IOD	B	712	-	-	X	-
4	IOD	B	713	-	-	X	-
6	SO4	B	717	-	-	-	X

2 Entry composition

There are 7 unique types of molecules in this entry. The entry contains 9286 atoms, of which 0 are hydrogens and 0 are deuteriums.

In the tables below, the ZeroOcc column contains the number of atoms modelled with zero occupancy, the AltConf column contains the number of residues with at least one atom in alternate conformation and the Trace column contains the number of residues modelled with at most 2 atoms.

- Molecule 1 is a protein called Glucokinase regulatory protein.

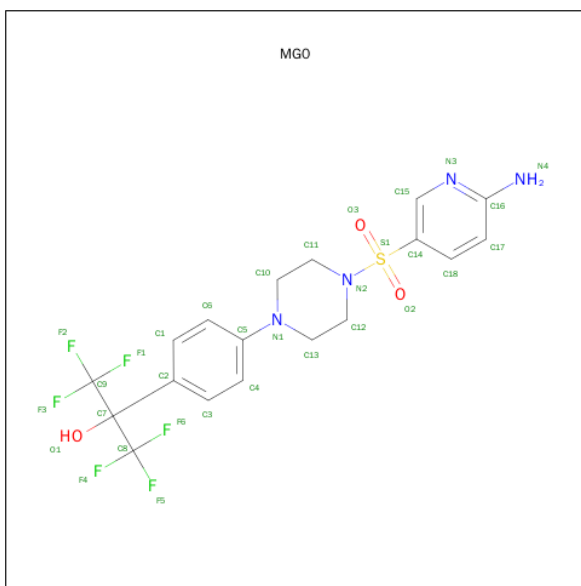
Mol	Chain	Residues	Atoms					ZeroOcc	AltConf	Trace
1	A	585	Total	C	N	O	S	0	0	0
			4521	2882	774	841	24			
1	B	590	Total	C	N	O	S	0	0	0
			4554	2901	781	848	24			

There are 22 discrepancies between the modelled and reference sequences:

Chain	Residue	Modelled	Actual	Comment	Reference
A	-10	MET	-	EXPRESSION TAG	UNP Q14397
A	-9	HIS	-	EXPRESSION TAG	UNP Q14397
A	-8	HIS	-	EXPRESSION TAG	UNP Q14397
A	-7	HIS	-	EXPRESSION TAG	UNP Q14397
A	-6	HIS	-	EXPRESSION TAG	UNP Q14397
A	-5	HIS	-	EXPRESSION TAG	UNP Q14397
A	-4	HIS	-	EXPRESSION TAG	UNP Q14397
A	-3	ASP	-	EXPRESSION TAG	UNP Q14397
A	-2	GLU	-	EXPRESSION TAG	UNP Q14397
A	-1	VAL	-	EXPRESSION TAG	UNP Q14397
A	0	ASP	-	EXPRESSION TAG	UNP Q14397
B	-10	MET	-	EXPRESSION TAG	UNP Q14397
B	-9	HIS	-	EXPRESSION TAG	UNP Q14397
B	-8	HIS	-	EXPRESSION TAG	UNP Q14397
B	-7	HIS	-	EXPRESSION TAG	UNP Q14397
B	-6	HIS	-	EXPRESSION TAG	UNP Q14397
B	-5	HIS	-	EXPRESSION TAG	UNP Q14397
B	-4	HIS	-	EXPRESSION TAG	UNP Q14397
B	-3	ASP	-	EXPRESSION TAG	UNP Q14397
B	-2	GLU	-	EXPRESSION TAG	UNP Q14397
B	-1	VAL	-	EXPRESSION TAG	UNP Q14397
B	0	ASP	-	EXPRESSION TAG	UNP Q14397

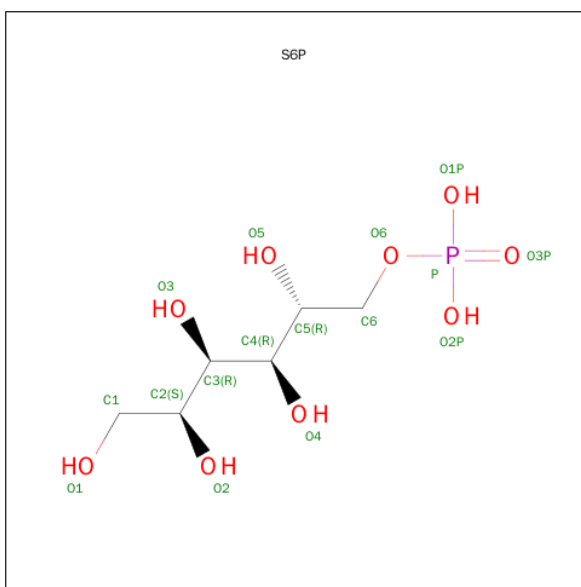
- Molecule 2 is 2-(4-{4-[(6-AMINOPYRIDIN-3-YL)SULFONYL]PIPERAZIN-1-YL}PH ENYL)-1,1,1,3,3,3-HEXAFLUOROPROPAN-2-OL (three-letter code: MG0) (formula:

$C_{18}H_{18}F_6N_4O_3S$).



Mol	Chain	Residues	Atoms						ZeroOcc	AltConf
2	A	1	Total	C	F	N	O	S	0	0
			32	18	6	4	3	1		
2	B	1	Total	C	F	N	O	S	0	0
			32	18	6	4	3	1		

- Molecule 3 is SUGAR (D-SORBITOL-6-PHOSPHATE) (three-letter code: S6P) (formula: $C_6H_{15}O_9P$).

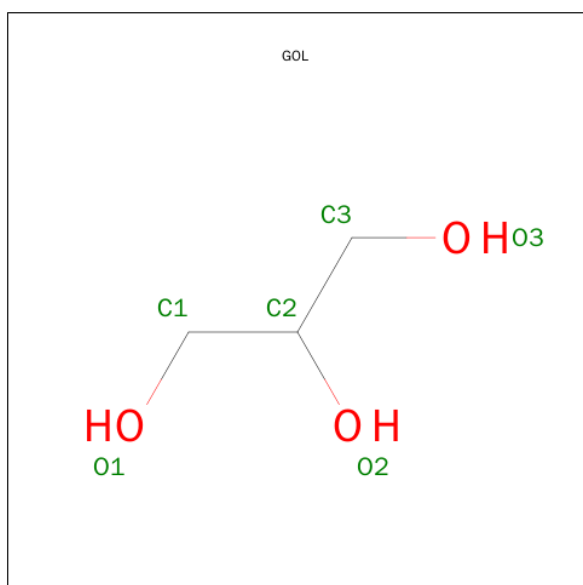


Mol	Chain	Residues	Atoms				ZeroOcc	AltConf
3	A	1	Total	C	O	P	0	0
			16	6	9	1		
3	B	1	Total	C	O	P	0	0
			16	6	9	1		

- Molecule 4 is IODIDE ION (three-letter code: IOD) (formula: I).

Mol	Chain	Residues	Atoms		ZeroOcc	AltConf
4	B	14	Total	I	0	0
			14	14		
4	A	11	Total	I	0	0
			11	11		

- Molecule 5 is GLYCEROL (three-letter code: GOL) (formula: C₃H₈O₃).



Mol	Chain	Residues	Atoms			ZeroOcc	AltConf
5	A	1	Total	C	O	0	0
			6	3	3		

- Molecule 6 is SULFATE ION (three-letter code: SO4) (formula: O₄S).



Mol	Chain	Residues	Atoms			ZeroOcc	AltConf
6	B	1	Total	O	S	0	0
			5	4	1		
6	B	1	Total	O	S	0	0
			5	4	1		
6	B	1	Total	O	S	0	0
			5	4	1		

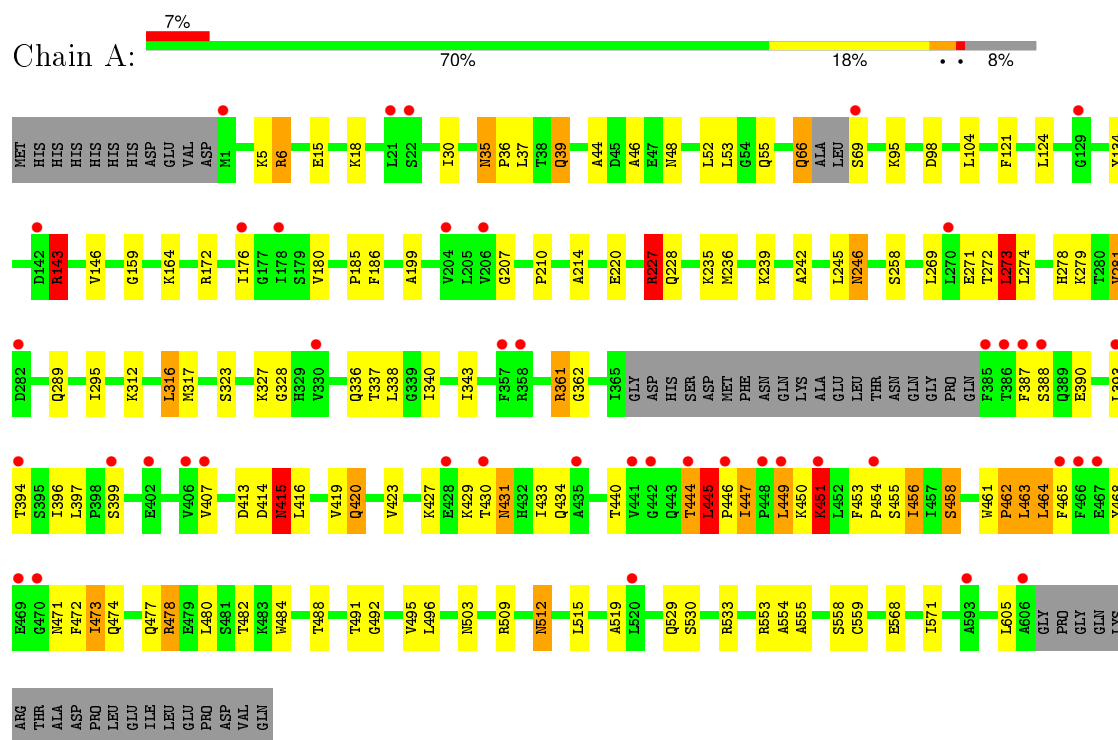
- Molecule 7 is water.

Mol	Chain	Residues	Atoms		ZeroOcc	AltConf
7	A	26	Total	O	0	0
			26	26		
7	B	43	Total	O	0	0
			43	43		

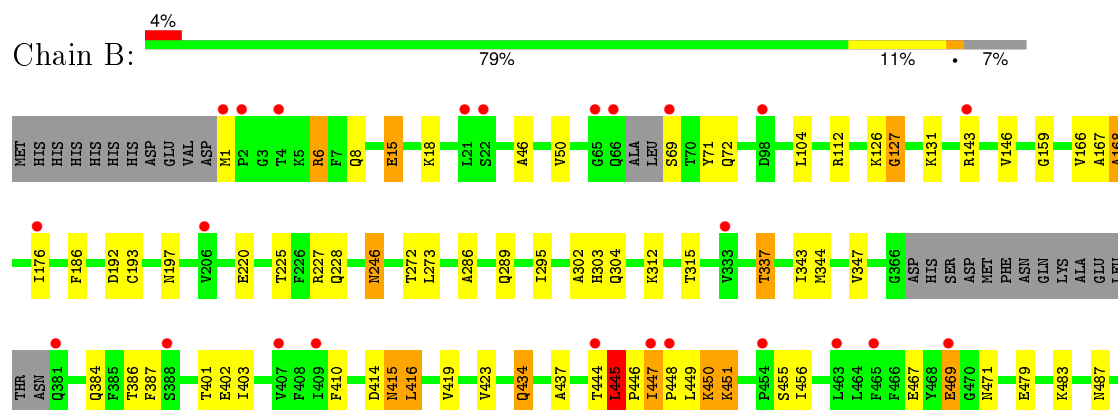
3 Residue-property plots [i](#)

These plots are drawn for all protein, RNA and DNA chains in the entry. The first graphic for a chain summarises the proportions of errors displayed in the second graphic. The second graphic shows the sequence view annotated by issues in geometry and electron density. Residues are color-coded according to the number of geometric quality criteria for which they contain at least one outlier: green = 0, yellow = 1, orange = 2 and red = 3 or more. A red dot above a residue indicates a poor fit to the electron density ($RSRZ > 2$). Stretches of 2 or more consecutive residues without any outlier are shown as a green connector. Residues present in the sample, but not in the model, are shown in grey.

• Molecule 1: Glucokinase regulatory protein



• Molecule 1: Glucokinase regulatory protein



K499	D507	L508	L523	Q529	A532	R533	E536	L548	R553	A554	A555	S558	V601	A606	GLY	PRO	GLY	GLN	LYS	ARG	THR	ALA	ASP	PRO	LEU	GLU	ILE	LEU	GLU	PRO	ASP	VAL	GLN
------	------	------	------	------	------	------	------	------	------	------	------	------	------	------	-----	-----	-----	-----	-----	-----	-----	-----	-----	-----	-----	-----	-----	-----	-----	-----	-----	-----	-----

4 Data and refinement statistics

Property	Value	Source
Space group	P 65	Depositor
Cell constants a, b, c, α , β , γ	149.13Å 149.13Å 132.38Å 90.00° 90.00° 120.00°	Depositor
Resolution (Å)	26.00 – 2.20 26.06 – 2.20	Depositor EDS
% Data completeness (in resolution range)	90.3 (26.00-2.20) 90.4 (26.06-2.20)	Depositor EDS
R_{merge}	(Not available)	Depositor
R_{sym}	(Not available)	Depositor
$\langle I/\sigma(I) \rangle$ ¹	1.17 (at 2.20Å)	Xtriage
Refinement program	REFMAC 5.7.0032	Depositor
R, R_{free}	0.230 , 0.288 0.236 , 0.287	Depositor DCC
R_{free} test set	3826 reflections (5.26%)	DCC
Wilson B-factor (Å ²)	45.9	Xtriage
Anisotropy	0.078	Xtriage
Bulk solvent k_{sol} (e/Å ³), B_{sol} (Å ²)	0.35 , 38.1	EDS
Estimated twinning fraction	0.025 for h,-h-k,-l	Xtriage
L-test for twinning ²	$\langle L \rangle = 0.52$, $\langle L^2 \rangle = 0.36$	Xtriage
Outliers	1 of 76513 reflections (0.001%)	Xtriage
F_o, F_c correlation	0.95	EDS
Total number of atoms	9286	wwPDB-VP
Average B, all atoms (Å ²)	51.0	wwPDB-VP

Xtriage's analysis on translational NCS is as follows: *The largest off-origin peak in the Patterson function is 2.75% of the height of the origin peak. No significant pseudotranslation is detected.*

¹Intensities estimated from amplitudes.

²Theoretical values of $\langle |L| \rangle$, $\langle L^2 \rangle$ for acentric reflections are 0.5, 0.375 respectively for untwinned datasets, and 0.333, 0.2 for perfectly twinned datasets.

5 Model quality

5.1 Standard geometry

Bond lengths and bond angles in the following residue types are not validated in this section: GOL, MG0, SO4, S6P, IOD

The Z score for a bond length (or angle) is the number of standard deviations the observed value is removed from the expected value. A bond length (or angle) with $|Z| > 5$ is considered an outlier worth inspection. RMSZ is the root-mean-square of all Z scores of the bond lengths (or angles).

Mol	Chain	Bond lengths		Bond angles	
		RMSZ	$\# Z > 5$	RMSZ	$\# Z > 5$
1	A	0.80	0/4603	0.94	11/6228 (0.2%)
1	B	0.81	0/4637	0.91	2/6274 (0.0%)
All	All	0.80	0/9240	0.92	13/12502 (0.1%)

Chiral center outliers are detected by calculating the chiral volume of a chiral center and verifying if the center is modelled as a planar moiety or with the opposite hand. A planarity outlier is detected by checking planarity of atoms in a peptide group, atoms in a mainchain group or atoms of a sidechain that are expected to be planar.

Mol	Chain	#Chirality outliers	#Planarity outliers
1	A	0	1

There are no bond length outliers.

All (13) bond angle outliers are listed below:

Mol	Chain	Res	Type	Atoms	Z	Observed($^{\circ}$)	Ideal($^{\circ}$)
1	A	227	ARG	NE-CZ-NH1	9.08	124.84	120.30
1	A	478	ARG	NE-CZ-NH1	9.03	124.82	120.30
1	A	449	LEU	CA-CB-CG	8.18	134.12	115.30
1	A	227	ARG	NE-CZ-NH2	-7.29	116.65	120.30
1	A	478	ARG	NE-CZ-NH2	-7.24	116.68	120.30
1	B	507	ASP	CB-CG-OD1	6.45	124.10	118.30
1	A	6	ARG	NE-CZ-NH1	6.12	123.36	120.30
1	A	273	LEU	CA-CB-CG	6.05	129.22	115.30
1	A	143	ARG	NE-CZ-NH1	6.03	123.31	120.30
1	A	429	LYS	CD-CE-NZ	5.84	125.13	111.70
1	A	361	ARG	NE-CZ-NH1	5.29	122.94	120.30
1	A	553	ARG	NE-CZ-NH2	-5.16	117.72	120.30
1	B	227	ARG	NE-CZ-NH2	-5.16	117.72	120.30

There are no chirality outliers.

All (1) planarity outliers are listed below:

Mol	Chain	Res	Type	Group
1	A	451	LYS	Peptide

5.2 Too-close contacts ⓘ

In the following table, the Non-H and H(model) columns list the number of non-hydrogen atoms and hydrogen atoms in the chain respectively. The H(added) column lists the number of hydrogen atoms added and optimized by MolProbity. The Clashes column lists the number of clashes within the asymmetric unit, whereas Symm-Clashes lists symmetry related clashes.

Mol	Chain	Non-H	H(model)	H(added)	Clashes	Symm-Clashes
1	A	4521	0	4618	88	0
1	B	4554	0	4647	54	0
2	A	32	0	18	0	0
2	B	32	0	18	0	0
3	A	16	0	13	0	0
3	B	16	0	13	0	0
4	A	11	0	0	2	0
4	B	14	0	0	6	0
5	A	6	0	8	0	0
6	B	15	0	0	0	0
7	A	26	0	0	0	0
7	B	43	0	0	0	0
All	All	9286	0	9335	141	0

The all-atom clashscore is defined as the number of clashes found per 1000 atoms (including hydrogen atoms). The all-atom clashscore for this structure is 8.

All (141) close contacts within the same asymmetric unit are listed below, sorted by their clash magnitude.

Atom-1	Atom-2	Interatomic distance (Å)	Clash overlap (Å)
1:B:419:VAL:O	1:B:423:VAL:HG23	1.79	0.83
1:B:445:LEU:HD13	1:B:450:LYS:HB3	1.61	0.82
1:A:447:ILE:HG22	1:A:449:LEU:C	2.01	0.79
1:A:447:ILE:HG22	1:A:450:LYS:N	1.99	0.78
1:B:225:THR:H	1:B:228:GLN:HE21	1.35	0.73
1:A:15:GLU:H	1:A:18:LYS:HE2	1.54	0.73
1:B:445:LEU:HG	4:B:711:IOD:I	2.63	0.69
1:B:532:ALA:O	1:B:536:GLU:HG3	1.92	0.69

Continued on next page...

Continued from previous page...

Atom-1	Atom-2	Interatomic distance (Å)	Clash overlap (Å)
1:A:228:GLN:HE22	1:B:228:GLN:HE22	1.41	0.68
1:A:317:MET:HE2	1:A:496:LEU:HD11	1.75	0.68
1:B:508:LEU:C	1:B:508:LEU:HD12	2.17	0.65
1:A:44:ALA:HB1	1:A:48:ASN:HB3	1.79	0.64
1:A:473:ILE:HD13	1:A:473:ILE:O	1.97	0.64
1:B:220:GLU:OE1	1:B:558:SER:OG	2.12	0.64
1:A:468:TYR:HB2	4:A:703:IOD:I	2.68	0.64
1:A:416:LEU:O	1:A:420:GLN:HG3	2.00	0.61
1:A:36:PRO:O	1:A:39:GLN:HG2	2.00	0.61
1:A:480:LEU:HD21	1:A:484:TRP:CH2	2.37	0.60
1:A:236:MET:HE2	1:A:242:ALA:HB2	1.83	0.60
1:A:393:LEU:O	1:A:397:LEU:HB3	2.02	0.59
1:B:469:GLU:HB2	4:B:712:IOD:I	2.73	0.59
1:B:246:ASN:HD22	1:B:246:ASN:N	2.01	0.59
1:A:444:THR:O	1:A:445:LEU:HB2	2.03	0.58
1:A:66:GLN:O	1:A:69:SER:N	2.36	0.58
1:A:6:ARG:HD3	1:A:555:ALA:O	2.02	0.58
1:B:146:VAL:O	1:B:146:VAL:HG12	2.04	0.57
1:A:430:THR:HG22	1:A:431:ASN:N	2.20	0.57
1:A:180:VAL:HG11	1:A:258:SER:HB2	1.86	0.57
1:B:601:VAL:HG21	4:B:704:IOD:I	2.75	0.57
1:A:491:THR:O	1:A:495:VAL:HG23	2.05	0.57
1:A:474:GLN:HA	1:A:477:GLN:HE21	1.70	0.56
1:B:529:GLN:HE22	1:B:533:ARG:HH21	1.52	0.56
1:A:164:LYS:HE3	1:A:164:LYS:HA	1.88	0.56
1:A:431:ASN:HD22	1:A:431:ASN:H	1.54	0.56
1:A:444:THR:O	1:A:445:LEU:CB	2.54	0.55
1:A:245:LEU:HD13	1:A:269:LEU:HD21	1.88	0.55
1:A:512:ASN:C	1:A:512:ASN:HD22	2.10	0.55
1:B:246:ASN:HD22	1:B:246:ASN:H	1.54	0.54
1:A:245:LEU:HD13	1:A:269:LEU:CD2	2.36	0.54
1:A:419:VAL:O	1:A:423:VAL:HG23	2.08	0.54
1:B:315:THR:HG22	1:B:434:GLN:NE2	2.22	0.54
1:A:273:LEU:HD23	1:A:273:LEU:C	2.28	0.53
1:A:323:SER:O	1:A:328:GLY:N	2.41	0.53
1:B:286:ALA:HA	1:B:289:GLN:HE21	1.74	0.52
1:B:384:GLN:HG2	1:B:387:PHE:CE1	2.45	0.52
1:B:315:THR:HG22	1:B:434:GLN:HE21	1.74	0.52
1:A:207:GLY:O	1:A:246:ASN:HA	2.10	0.52
1:B:112:ARG:HD3	1:B:344:MET:HG2	1.91	0.52
1:A:449:LEU:C	1:A:451:LYS:H	2.13	0.52

Continued on next page...

Continued from previous page...

Atom-1	Atom-2	Interatomic distance (Å)	Clash overlap (Å)
1:A:146:VAL:CG1	1:A:146:VAL:O	2.58	0.51
1:A:512:ASN:ND2	1:A:515:LEU:H	2.08	0.51
1:A:121:PHE:HB3	1:A:134:TYR:CE2	2.45	0.51
1:A:451:LYS:HD3	1:A:451:LYS:N	2.26	0.51
1:B:146:VAL:HG13	1:B:343:ILE:CG2	2.40	0.51
1:B:6:ARG:HD3	1:B:555:ALA:O	2.11	0.51
1:A:456:ILE:HD12	1:A:458:SER:HB2	1.93	0.51
1:A:143:ARG:HH11	1:A:143:ARG:HB3	1.76	0.50
1:A:273:LEU:HD23	1:A:274:LEU:N	2.27	0.50
1:B:447:ILE:O	1:B:451:LYS:HB2	2.12	0.50
1:A:416:LEU:N	1:A:416:LEU:HD12	2.28	0.49
1:A:278:HIS:O	1:A:281:VAL:HG12	2.13	0.49
1:A:387:PHE:CD2	1:A:396:ILE:HD11	2.47	0.49
1:A:46:ALA:HA	1:A:317:MET:HE1	1.95	0.49
1:B:414:ASP:O	1:B:416:LEU:HD13	2.14	0.48
1:A:529:GLN:NE2	1:A:533:ARG:HH21	2.12	0.48
1:A:463:LEU:HD13	1:A:464:LEU:H	1.78	0.48
1:B:451:LYS:HA	1:B:451:LYS:CE	2.43	0.48
1:A:343:ILE:HA	1:A:362:GLY:HA3	1.96	0.48
1:A:431:ASN:ND2	1:A:431:ASN:H	2.11	0.48
1:A:246:ASN:N	1:A:246:ASN:HD22	2.11	0.48
1:A:272:THR:HA	1:A:295:ILE:HG21	1.96	0.48
1:B:127:GLY:O	4:B:712:IOD:I	3.02	0.47
1:A:66:GLN:C	1:A:69:SER:N	2.68	0.47
1:A:46:ALA:HA	1:A:317:MET:CE	2.44	0.47
1:B:146:VAL:HG13	1:B:343:ILE:HG21	1.94	0.47
1:B:146:VAL:O	1:B:146:VAL:CG1	2.63	0.47
1:B:548:LEU:HD22	1:B:553:ARG:HG3	1.96	0.47
1:A:35:ASN:HD22	1:A:35:ASN:C	2.19	0.47
1:A:6:ARG:HD2	1:A:554:ALA:O	2.15	0.47
1:B:444:THR:O	1:B:445:LEU:CB	2.63	0.46
1:B:104:LEU:HD23	1:B:176:ILE:HB	1.96	0.46
1:A:159:GLY:HA2	1:A:186:PHE:CE1	2.50	0.46
1:B:273:LEU:C	1:B:273:LEU:HD23	2.35	0.46
1:A:317:MET:SD	1:A:492:GLY:HA3	2.56	0.46
1:A:449:LEU:HD13	1:A:449:LEU:O	2.15	0.46
4:A:711:IOD:I	4:B:713:IOD:I	3.74	0.45
1:B:401:THR:HG22	1:B:403:ILE:H	1.80	0.45
1:B:272:THR:HA	1:B:295:ILE:HG21	1.98	0.45
1:B:529:GLN:HE21	1:B:533:ARG:HE	1.62	0.45
1:B:445:LEU:CD1	1:B:450:LYS:HB3	2.37	0.45

Continued on next page...

Continued from previous page...

Atom-1	Atom-2	Interatomic distance (Å)	Clash overlap (Å)
1:A:228:GLN:HE22	1:B:228:GLN:NE2	2.12	0.45
1:A:414:ASP:O	1:A:415:ASN:CB	2.65	0.45
1:B:159:GLY:HA2	1:B:186:PHE:CE1	2.52	0.44
1:B:225:THR:H	1:B:228:GLN:NE2	2.11	0.44
1:A:509:ARG:NH2	1:A:568:GLU:OE2	2.50	0.44
1:A:316:LEU:HD21	1:A:407:VAL:CG2	2.47	0.44
1:B:46:ALA:O	1:B:50:VAL:HG23	2.17	0.44
1:A:66:GLN:OE1	1:A:66:GLN:HA	2.18	0.44
1:A:416:LEU:O	1:A:420:GLN:CG	2.65	0.44
1:A:37:LEU:HD22	1:A:55:GLN:HE21	1.82	0.43
1:A:396:ILE:O	1:A:399:SER:OG	2.34	0.43
1:A:530:SER:OG	1:A:533:ARG:HG3	2.19	0.43
1:A:37:LEU:HD22	1:A:55:GLN:NE2	2.33	0.43
1:A:146:VAL:O	1:A:146:VAL:HG12	2.19	0.43
1:B:6:ARG:H	1:B:6:ARG:HG2	1.64	0.43
1:B:529:GLN:NE2	1:B:533:ARG:HH21	2.15	0.43
1:A:236:MET:CE	1:A:242:ALA:HB2	2.49	0.43
1:B:193:CYS:HA	4:B:713:IOD:I	2.88	0.42
1:A:214:ALA:O	1:A:227:ARG:HD3	2.19	0.42
1:B:312:LYS:NZ	1:B:456:ILE:O	2.45	0.42
1:A:337:THR:HA	1:A:340:ILE:HD12	2.01	0.42
1:A:519:ALA:HB2	1:A:571:ILE:HD11	2.00	0.42
1:A:529:GLN:NE2	1:A:533:ARG:NH2	2.67	0.42
1:B:447:ILE:HG13	1:B:448:PRO:HD3	2.01	0.42
1:A:30:ILE:HD12	1:A:210:PRO:HD3	2.02	0.42
1:A:390:GLU:O	1:A:393:LEU:N	2.53	0.42
1:A:456:ILE:HD12	1:A:458:SER:CB	2.49	0.42
1:A:246:ASN:H	1:A:246:ASN:HD22	1.66	0.41
1:A:52:LEU:HD23	1:A:52:LEU:HA	1.91	0.41
1:A:474:GLN:O	1:A:478:ARG:HD3	2.20	0.41
1:A:220:GLU:OE1	1:A:558:SER:OG	2.31	0.41
1:A:53:LEU:HD12	1:A:488:THR:HG23	2.03	0.41
1:A:455:SER:O	1:A:456:ILE:O	2.38	0.41
1:A:271:GLU:O	1:A:272:THR:C	2.58	0.41
1:B:337:THR:HG21	1:B:479:GLU:OE1	2.21	0.41
1:B:523:LEU:HA	1:B:523:LEU:HD23	1.80	0.41
1:A:338:LEU:HD23	1:A:482:THR:OG1	2.20	0.41
1:A:433:ILE:HD12	1:A:453:PHE:CE1	2.55	0.41
1:B:414:ASP:O	1:B:416:LEU:N	2.54	0.41
1:B:15:GLU:HG3	1:B:18:LYS:HG3	2.02	0.41
1:A:36:PRO:O	1:A:39:GLN:CG	2.67	0.41

Continued on next page...

Continued from previous page...

Atom-1	Atom-2	Interatomic distance (Å)	Clash overlap (Å)
1:A:461:TRP:HA	1:A:462:PRO:HD2	1.99	0.40
1:A:124:LEU:HA	1:A:472:PHE:CE2	2.55	0.40
1:B:167:ALA:O	1:B:168:ALA:C	2.60	0.40
1:B:503:ASN:H	1:B:503:ASN:HD22	1.70	0.40
1:A:104:LEU:HD23	1:A:176:ILE:HB	2.03	0.40
1:B:302:ALA:O	1:B:303:HIS:C	2.53	0.40
1:B:286:ALA:HA	1:B:289:GLN:NE2	2.36	0.40
1:B:410:PHE:O	1:B:437:ALA:HA	2.21	0.40
1:B:483:LYS:NZ	1:B:487:ASN:OD1	2.48	0.40
1:A:463:LEU:HD13	1:A:464:LEU:N	2.36	0.40

There are no symmetry-related clashes.

5.3 Torsion angles [i](#)

5.3.1 Protein backbone [i](#)

In the following table, the Percentiles column shows the percent Ramachandran outliers of the chain as a percentile score with respect to all X-ray entries followed by that with respect to entries of similar resolution.

The Analysed column shows the number of residues for which the backbone conformation was analysed, and the total number of residues.

Mol	Chain	Analysed	Favoured	Allowed	Outliers	Percentiles	
1	A	579/636 (91%)	532 (92%)	37 (6%)	10 (2%)	11	7
1	B	584/636 (92%)	554 (95%)	24 (4%)	6 (1%)	19	16
All	All	1163/1272 (91%)	1086 (93%)	61 (5%)	16 (1%)	14	10

All (16) Ramachandran outliers are listed below:

Mol	Chain	Res	Type
1	A	415	ASN
1	A	445	LEU
1	A	456	ILE
1	B	415	ASN
1	A	454	PRO
1	A	462	PRO
1	B	127	GLY
1	B	445	LEU

Continued on next page...

Continued from previous page...

Mol	Chain	Res	Type
1	A	199	ALA
1	B	446	PRO
1	B	449	LEU
1	A	336	GLN
1	A	434	GLN
1	B	168	ALA
1	A	446	PRO
1	A	447	ILE

5.3.2 Protein sidechains ⓘ

In the following table, the Percentiles column shows the percent sidechain outliers of the chain as a percentile score with respect to all X-ray entries followed by that with respect to entries of similar resolution.

The Analysed column shows the number of residues for which the sidechain conformation was analysed, and the total number of residues.

Mol	Chain	Analysed	Rotameric	Outliers	Percentiles	
1	A	498/542 (92%)	456 (92%)	42 (8%)	14	13
1	B	501/542 (92%)	468 (93%)	33 (7%)	21	22
All	All	999/1084 (92%)	924 (92%)	75 (8%)	17	17

All (75) residues with a non-rotameric sidechain are listed below:

Mol	Chain	Res	Type
1	A	5	LYS
1	A	35	ASN
1	A	39	GLN
1	A	66	GLN
1	A	95	LYS
1	A	98	ASP
1	A	143	ARG
1	A	172	ARG
1	A	185	PRO
1	A	227	ARG
1	A	235	LYS
1	A	239	LYS
1	A	246	ASN
1	A	273	LEU
1	A	279	LYS

Continued on next page...

Continued from previous page...

Mol	Chain	Res	Type
1	A	281	VAL
1	A	289	GLN
1	A	312	LYS
1	A	316	LEU
1	A	327	LYS
1	A	361	ARG
1	A	388	SER
1	A	394	THR
1	A	413	ASP
1	A	415	ASN
1	A	420	GLN
1	A	427	LYS
1	A	431	ASN
1	A	440	THR
1	A	444	THR
1	A	445	LEU
1	A	451	LYS
1	A	458	SER
1	A	463	LEU
1	A	464	LEU
1	A	465	PHE
1	A	471	ASN
1	A	473	ILE
1	A	503	ASN
1	A	512	ASN
1	A	559	CYS
1	A	605	LEU
1	B	1	MET
1	B	6	ARG
1	B	8	GLN
1	B	15	GLU
1	B	69	SER
1	B	71	TYR
1	B	72	GLN
1	B	126	LYS
1	B	131	LYS
1	B	143	ARG
1	B	166	VAL
1	B	192	ASP
1	B	197	ASN
1	B	246	ASN
1	B	304	GLN

Continued on next page...

Continued from previous page...

Mol	Chain	Res	Type
1	B	337	THR
1	B	347	VAL
1	B	386	THR
1	B	402	GLU
1	B	415	ASN
1	B	416	LEU
1	B	434	GLN
1	B	445	LEU
1	B	447	ILE
1	B	450	LYS
1	B	451	LYS
1	B	455	SER
1	B	467	GLU
1	B	469	GLU
1	B	471	ASN
1	B	499	LYS
1	B	503	ASN
1	B	548	LEU

Some sidechains can be flipped to improve hydrogen bonding and reduce clashes. All (33) such sidechains are listed below:

Mol	Chain	Res	Type
1	A	35	ASN
1	A	55	GLN
1	A	91	GLN
1	A	123	GLN
1	A	190	GLN
1	A	196	ASN
1	A	246	ASN
1	A	309	GLN
1	A	336	GLN
1	A	415	ASN
1	A	431	ASN
1	A	471	ASN
1	A	477	GLN
1	A	503	ASN
1	A	512	ASN
1	A	529	GLN
1	B	8	GLN
1	B	39	GLN
1	B	48	ASN
1	B	196	ASN

Continued on next page...

Continued from previous page...

Mol	Chain	Res	Type
1	B	197	ASN
1	B	228	GLN
1	B	246	ASN
1	B	289	GLN
1	B	304	GLN
1	B	309	GLN
1	B	415	ASN
1	B	425	GLN
1	B	431	ASN
1	B	434	GLN
1	B	471	ASN
1	B	503	ASN
1	B	529	GLN

5.3.3 RNA [i](#)

There are no RNA molecules in this entry.

5.4 Non-standard residues in protein, DNA, RNA chains [i](#)

There are no non-standard protein/DNA/RNA residues in this entry.

5.5 Carbohydrates [i](#)

There are no carbohydrates in this entry.

5.6 Ligand geometry [i](#)

Of 33 ligands modelled in this entry, 25 are monoatomic - leaving 8 for Mogul analysis.

In the following table, the Counts columns list the number of bonds (or angles) for which Mogul statistics could be retrieved, the number of bonds (or angles) that are observed in the model and the number of bonds (or angles) that are defined in the chemical component dictionary. The Link column lists molecule types, if any, to which the group is linked. The Z score for a bond length (or angle) is the number of standard deviations the observed value is removed from the expected value. A bond length (or angle) with $|Z| > 2$ is considered an outlier worth inspection. RMSZ is the root-mean-square of all Z scores of the bond lengths (or angles).

Mol	Type	Chain	Res	Link	Bond lengths			Bond angles		
					Counts	RMSZ	$\# Z > 2$	Counts	RMSZ	$\# Z > 2$
2	MG0	A	701	-	34,34,34	1.57	4 (11%)	52,54,54	1.83	14 (26%)

Mol	Type	Chain	Res	Link	Bond lengths			Bond angles		
					Counts	RMSZ	# Z > 2	Counts	RMSZ	# Z > 2
3	S6P	A	702	-	15,15,15	1.18	2 (13%)	18,21,21	1.62	4 (22%)
5	GOL	A	714	-	5,5,5	0.86	0	5,5,5	1.00	0
2	MG0	B	701	-	34,34,34	1.85	4 (11%)	52,54,54	1.84	10 (19%)
3	S6P	B	702	-	15,15,15	1.34	2 (13%)	18,21,21	1.48	2 (11%)
6	SO4	B	717	-	4,4,4	0.89	0	6,6,6	0.78	0
6	SO4	B	718	-	4,4,4	1.01	0	6,6,6	0.52	0
6	SO4	B	719	-	4,4,4	0.71	0	6,6,6	0.46	0

In the following table, the Chirals column lists the number of chiral outliers, the number of chiral centers analysed, the number of these observed in the model and the number defined in the chemical component dictionary. Similar counts are reported in the Torsion and Rings columns. '-' means no outliers of that kind were identified.

Mol	Type	Chain	Res	Link	Chirals	Torsions	Rings
2	MG0	A	701	-	-	0/40/50/50	0/3/3/3
3	S6P	A	702	-	-	0/20/20/20	0/0/0/0
5	GOL	A	714	-	-	0/4/4/4	0/0/0/0
2	MG0	B	701	-	-	0/40/50/50	0/3/3/3
3	S6P	B	702	-	-	0/20/20/20	0/0/0/0
6	SO4	B	717	-	-	0/0/0/0	0/0/0/0
6	SO4	B	718	-	-	0/0/0/0	0/0/0/0
6	SO4	B	719	-	-	0/0/0/0	0/0/0/0

All (12) bond length outliers are listed below:

Mol	Chain	Res	Type	Atoms	Z	Observed(Å)	Ideal(Å)
2	B	701	MG0	C11-N2	-6.11	1.41	1.47
2	A	701	MG0	C11-N2	-4.13	1.43	1.47
2	B	701	MG0	C12-N2	-3.71	1.43	1.47
3	B	702	S6P	C2-C3	-2.98	1.47	1.53
3	A	702	S6P	P-O1P	-2.25	1.46	1.54
2	B	701	MG0	C16-N4	-2.01	1.29	1.35
3	B	702	S6P	C6-C5	2.10	1.54	1.51
2	A	701	MG0	C15-C14	2.36	1.40	1.38
3	A	702	S6P	C6-C5	2.37	1.55	1.51
2	A	701	MG0	O3-S1	2.48	1.46	1.43
2	A	701	MG0	O2-S1	5.48	1.50	1.43
2	B	701	MG0	O2-S1	5.88	1.51	1.43

All (30) bond angle outliers are listed below:

Mol	Chain	Res	Type	Atoms	Z	Observed(°)	Ideal(°)
2	A	701	MG0	C12-N2-S1	-5.32	106.87	117.12
2	B	701	MG0	C12-N2-S1	-3.92	109.57	117.12
2	B	701	MG0	O3-S1-N2	-3.52	103.22	106.69
2	B	701	MG0	C11-N2-S1	-3.34	110.69	117.12
2	B	701	MG0	C12-N2-C11	-3.31	108.17	112.20
2	A	701	MG0	C14-C15-N3	-3.25	119.96	123.39
2	A	701	MG0	C12-N2-C11	-3.16	108.35	112.20
2	A	701	MG0	C11-N2-S1	-3.09	111.18	117.12
3	A	702	S6P	O6-P-O3P	-2.76	100.12	107.14
2	A	701	MG0	O3-S1-O2	-2.53	115.11	119.47
2	A	701	MG0	F4-C8-C7	-2.33	107.09	111.92
2	B	701	MG0	F5-C8-C7	-2.30	107.15	111.92
2	A	701	MG0	F3-C9-C7	-2.20	107.36	111.92
3	A	702	S6P	C1-C2-C3	-2.18	107.36	112.48
3	A	702	S6P	O5-C5-C6	-2.11	105.59	110.19
2	A	701	MG0	O3-S1-N2	-2.06	104.66	106.69
2	A	701	MG0	C11-C10-N1	2.00	114.59	110.63
2	A	701	MG0	C3-C4-C5	2.03	122.99	120.36
3	B	702	S6P	O3-C3-C2	2.11	114.07	108.75
2	B	701	MG0	C18-C14-S1	2.12	122.13	119.79
2	B	701	MG0	F4-C8-F5	2.17	114.61	107.56
2	A	701	MG0	F3-C9-F1	2.26	114.89	107.56
2	B	701	MG0	C12-C13-N1	2.27	115.12	110.63
2	A	701	MG0	O2-S1-N2	2.56	109.22	106.69
2	B	701	MG0	C14-S1-N2	2.99	111.01	107.32
3	A	702	S6P	O2P-P-O6	3.26	115.96	106.56
3	B	702	S6P	O6-P-O3P	3.63	116.38	107.14
2	A	701	MG0	C13-N1-C10	3.99	119.97	111.59
2	A	701	MG0	C13-C12-N2	4.84	112.94	109.02
2	B	701	MG0	C13-C12-N2	8.16	115.64	109.02

There are no chirality outliers.

There are no torsion outliers.

There are no ring outliers.

No monomer is involved in short contacts.

5.7 Other polymers ⓘ

There are no such residues in this entry.

5.8 Polymer linkage issues ⓘ

There are no chain breaks in this entry.

6 Fit of model and data ⓘ

6.1 Protein, DNA and RNA chains ⓘ

In the following table, the column labelled ‘#RSRZ > 2’ contains the number (and percentage) of RSRZ outliers, followed by percent RSRZ outliers for the chain as percentile scores relative to all X-ray entries and entries of similar resolution. The OWAB column contains the minimum, median, 95th percentile and maximum values of the occupancy-weighted average B-factor per residue. The column labelled ‘Q < 0.9’ lists the number of (and percentage) of residues with an average occupancy less than 0.9.

Mol	Chain	Analysed	<RSRZ>	#RSRZ > 2		OWAB(Å ²)	Q < 0.9
1	A	585/636 (91%)	0.24	44 (7%)	17 17	30, 50, 82, 118	0
1	B	590/636 (92%)	0.03	24 (4%)	41 39	27, 45, 71, 111	0
All	All	1175/1272 (92%)	0.14	68 (5%)	26 26	27, 47, 79, 118	0

All (68) RSRZ outliers are listed below:

Mol	Chain	Res	Type	RSRZ
1	A	449	LEU	7.8
1	B	21	LEU	6.9
1	A	466	PHE	5.3
1	B	1	MET	5.0
1	A	469	GLU	4.9
1	B	448	PRO	4.6
1	A	465	PHE	4.4
1	B	381	GLN	4.4
1	B	465	PHE	4.3
1	B	69	SER	4.2
1	A	357	PHE	4.1
1	A	21	LEU	3.9
1	B	447	ILE	3.9
1	A	448	PRO	3.8
1	A	69	SER	3.8
1	A	407	VAL	3.8
1	A	387	PHE	3.5
1	B	454	PRO	3.5
1	B	463	LEU	3.4
1	B	2	PRO	3.1
1	A	467	GLU	3.0
1	A	1	MET	3.0
1	A	386	THR	3.0
1	A	22	SER	3.0

Continued on next page...

Continued from previous page...

Mol	Chain	Res	Type	RSRZ
1	B	65	GLY	2.9
1	A	330	VAL	2.9
1	A	593	ALA	2.9
1	B	66	GLN	2.8
1	A	606	ALA	2.7
1	A	270	LEU	2.7
1	A	444	THR	2.7
1	A	142	ASP	2.7
1	A	176	ILE	2.6
1	A	385	PHE	2.6
1	A	388	SER	2.6
1	B	469	GLU	2.6
1	A	454	PRO	2.6
1	A	282	ASP	2.5
1	A	451	LYS	2.5
1	A	446	PRO	2.5
1	A	129	GLY	2.4
1	A	520	LEU	2.4
1	B	444	THR	2.4
1	A	393	LEU	2.3
1	A	441	VAL	2.3
1	A	470	GLY	2.3
1	A	430	THR	2.3
1	B	409	ILE	2.3
1	A	206	VAL	2.2
1	A	406	VAL	2.2
1	B	22	SER	2.2
1	A	178	ILE	2.2
1	A	358	ARG	2.2
1	A	204	VAL	2.2
1	B	4	THR	2.2
1	B	407	VAL	2.2
1	A	394	THR	2.2
1	B	98	ASP	2.1
1	B	143	ARG	2.1
1	B	206	VAL	2.1
1	A	435	ALA	2.1
1	B	333	VAL	2.1
1	B	388	SER	2.1
1	A	402	GLU	2.1
1	A	428	GLU	2.0
1	A	399	SER	2.0

Continued on next page...

Continued from previous page...

Mol	Chain	Res	Type	RSRZ
1	B	176	ILE	2.0
1	A	442	GLY	2.0

6.2 Non-standard residues in protein, DNA, RNA chains [i](#)

There are no non-standard protein/DNA/RNA residues in this entry.

6.3 Carbohydrates [i](#)

There are no carbohydrates in this entry.

6.4 Ligands [i](#)

In the following table, the Atoms column lists the number of modelled atoms in the group and the number defined in the chemical component dictionary. LLDF column lists the quality of electron density of the group with respect to its neighbouring residues in protein, DNA or RNA chains. The B-factors column lists the minimum, median, 95th percentile and maximum values of B factors of atoms in the group. The column labelled 'Q< 0.9' lists the number of atoms with occupancy less than 0.9.

Mol	Type	Chain	Res	Atoms	RSCC	RSR	LLDF	B-factors(Å ²)	Q<0.9
6	SO4	B	717	5/5	0.84	0.15	2.48	70,72,78,92	0
4	IOD	A	711	1/1	0.92	0.13	1.47	67,67,67,67	1
5	GOL	A	714	6/6	0.77	0.16	0.81	45,48,51,57	0
3	S6P	A	702	16/16	0.98	0.15	0.18	28,33,38,41	0
3	S6P	B	702	16/16	0.98	0.14	-0.15	24,29,32,33	0
2	MG0	B	701	32/32	0.97	0.12	-0.45	29,34,41,42	0
2	MG0	A	701	32/32	0.98	0.11	-0.45	32,37,42,43	0
4	IOD	B	710	1/1	0.96	0.12	-0.81	89,89,89,89	1
4	IOD	B	711	1/1	0.82	0.06	-1.43	81,81,81,81	1
4	IOD	A	709	1/1	0.97	0.08	-1.50	83,83,83,83	1
4	IOD	A	703	1/1	0.91	0.05	-1.59	74,74,74,74	0
4	IOD	A	712	1/1	0.91	0.07	-1.69	88,88,88,88	1
4	IOD	B	716	1/1	0.96	0.06	-1.90	66,66,66,66	1
4	IOD	B	703	1/1	0.95	0.07	-2.30	55,55,55,55	0
4	IOD	B	704	1/1	1.00	0.05	-2.33	52,52,52,52	0
4	IOD	B	705	1/1	0.99	0.04	-3.73	51,51,51,51	1
4	IOD	A	704	1/1	0.99	0.04	-4.68	60,60,60,60	0
4	IOD	B	708	1/1	0.97	0.04	-	66,66,66,66	1
4	IOD	B	709	1/1	0.95	0.10	-	90,90,90,90	0

Continued on next page...

Continued from previous page...

Mol	Type	Chain	Res	Atoms	RSCC	RSR	LLDF	B-factors(\AA^2)	Q<0.9
4	IOD	B	706	1/1	0.98	0.05	-	56,56,56,56	0
4	IOD	B	713	1/1	0.93	0.11	-	64,64,64,64	1
4	IOD	A	706	1/1	0.94	0.04	-	86,86,86,86	0
4	IOD	A	707	1/1	0.94	0.05	-	65,65,65,65	1
6	SO4	B	718	5/5	0.76	0.18	-	66,68,71,94	0
4	IOD	B	707	1/1	0.98	0.04	-	64,64,64,64	0
4	IOD	B	712	1/1	0.93	0.09	-	75,75,75,75	1
4	IOD	B	715	1/1	0.98	0.04	-	69,69,69,69	1
4	IOD	A	713	1/1	0.95	0.13	-	61,61,61,61	1
4	IOD	A	710	1/1	0.96	0.04	-	61,61,61,61	1
4	IOD	A	705	1/1	0.99	0.04	-	51,51,51,51	1
4	IOD	A	708	1/1	0.90	0.07	-	81,81,81,81	1
6	SO4	B	719	5/5	0.88	0.27	-	76,78,88,93	0
4	IOD	B	714	1/1	0.81	0.21	-	65,65,65,65	1

6.5 Other polymers [i](#)

There are no such residues in this entry.