



Full wwPDB X-ray Structure Validation Report ⓘ

Jan 31, 2016 – 08:59 PM GMT

PDB ID : 1MX5
Title : Crystal Structure of Human Liver Carboxylesterase in complexed with homatropine, a cocaine analogue
Authors : Bencharit, S.; Morton, C.L.; Xue, Y.; Potter, P.M.; Redinbo, M.R.
Deposited on : 2002-10-01
Resolution : 2.80 Å(reported)

This is a Full wwPDB X-ray Structure Validation Report for a publicly released PDB entry.
We welcome your comments at validation@mail.wwpdb.org
A user guide is available at
<http://wwpdb.org/validation/2016/XrayValidationReportHelp>
with specific help available everywhere you see the ⓘ symbol.

The following versions of software and data (see [references ⓘ](#)) were used in the production of this report:

MolProbity : 4.02b-467
Mogul : 1.7 (RC4), CSD as536be (2015)
Xtriage (Phenix) : **NOT EXECUTED**
EDS : **NOT EXECUTED**
Percentile statistics : 20151230.v01 (using entries in the PDB archive December 30th 2015)
Ideal geometry (proteins) : Engh & Huber (2001)
Ideal geometry (DNA, RNA) : Parkinson et al. (1996)
Validation Pipeline (wwPDB-VP) : trunk26865

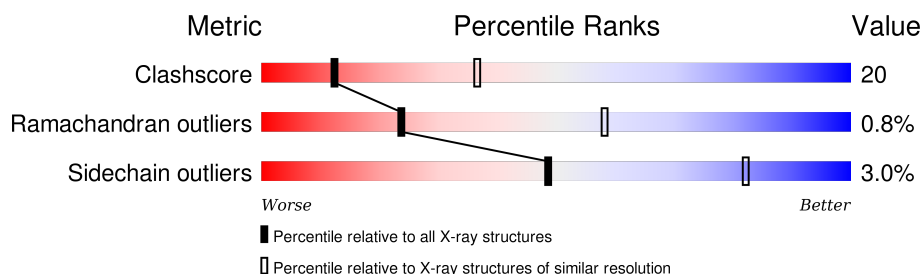
1 Overall quality at a glance

The following experimental techniques were used to determine the structure:

X-RAY DIFFRACTION

The reported resolution of this entry is 2.80 Å.

Percentile scores (ranging between 0-100) for global validation metrics of the entry are shown in the following graphic. The table shows the number of entries on which the scores are based.



Metric	Whole archive (#Entries)	Similar resolution (#Entries, resolution range(Å))
Clashscore	102246	2827 (2.80-2.80)
Ramachandran outliers	100387	2782 (2.80-2.80)
Sidechain outliers	100360	2784 (2.80-2.80)

The table below summarises the geometric issues observed across the polymeric chains and their fit to the electron density. The red, orange, yellow and green segments on the lower bar indicate the fraction of residues that contain outliers for ≥ 3 , 2, 1 and 0 types of geometric quality criteria. A grey segment represents the fraction of residues that are not modelled. The numeric value for each fraction is indicated below the corresponding segment, with a dot representing fractions $\leq 5\%$. The upper red bar (where present) indicates the fraction of residues that have poor fit to the electron density. The numeric value is given above the bar.

Note EDS was not executed.

Mol	Chain	Length	Quality of chain
1	A	548	
1	B	548	
1	C	548	
1	D	548	
1	E	548	
1	F	548	

The following table lists non-polymeric compounds, carbohydrate monomers and non-standard

residues in protein, DNA, RNA chains that are outliers for geometric or electron-density-fit criteria:

Mol	Type	Chain	Res	Chirality	Geometry	Clashes	Electron density
4	SIA	B	282	-	-	X	-
5	CL	A	11	-	-	X	-
5	CL	E	15	-	-	X	-
6	HTQ	A	111	-	-	X	-
6	HTQ	B	212	-	-	X	-
6	HTQ	E	515	-	-	X	-

2 Entry composition

There are 7 unique types of molecules in this entry. The entry contains 26960 atoms, of which 0 are hydrogens and 0 are deuteriums.

In the tables below, the ZeroOcc column contains the number of atoms modelled with zero occupancy, the AltConf column contains the number of residues with at least one atom in alternate conformation and the Trace column contains the number of residues modelled with at most 2 atoms.

- Molecule 1 is a protein called liver Carboxylesterase I.

Mol	Chain	Residues	Atoms					ZeroOcc	AltConf	Trace
1	A	532	Total	C	N	O	S	0	0	0
			4130	2662	685	763	20			
1	B	531	Total	C	N	O	S	0	0	0
			4124	2659	684	761	20			
1	C	531	Total	C	N	O	S	0	0	0
			4124	2659	684	761	20			
1	D	532	Total	C	N	O	S	0	0	0
			4130	2662	685	763	20			
1	E	531	Total	C	N	O	S	0	0	0
			4124	2659	684	761	20			
1	F	531	Total	C	N	O	S	0	0	0
			4124	2659	684	761	20			

There are 6 discrepancies between the modelled and reference sequences:

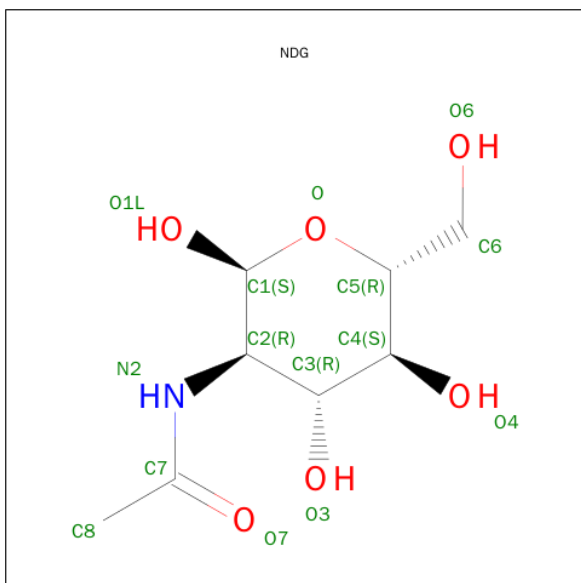
Chain	Residue	Modelled	Actual	Comment	Reference
A	?	-	GLN	DELETION	UNP P23141
B	?	-	GLN	DELETION	UNP P23141
C	?	-	GLN	DELETION	UNP P23141
D	?	-	GLN	DELETION	UNP P23141
E	?	-	GLN	DELETION	UNP P23141
F	?	-	GLN	DELETION	UNP P23141

- Molecule 2 is SUGAR (N-ACETYL-D-GLUCOSAMINE) (three-letter code: NAG) (formula: C₈H₁₅NO₆).



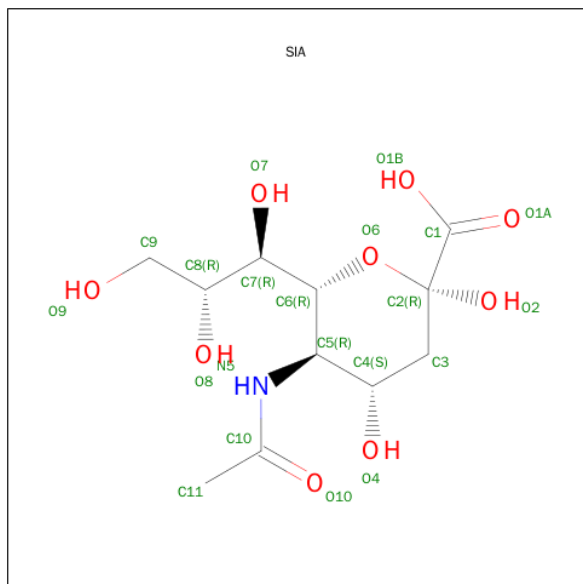
Mol	Chain	Residues	Atoms				ZeroOcc	AltConf
2	A	1	Total	C	N	O	0	0
			14	8	1	5		
2	C	1	Total	C	N	O	0	0
			14	8	1	5		
2	E	1	Total	C	N	O	0	0
			14	8	1	5		
2	E	1	Total	C	N	O	0	0
			14	8	1	5		

- Molecule 3 is SUGAR (2-(ACETYLAMINO)-2-DEOXY-A-D-GLUCOPYRANOSE) (three-letter code: NDG) (formula: C₈H₁₅NO₆).



Mol	Chain	Residues	Atoms				ZeroOcc	AltConf
3	B	1	Total	C	N	O	0	0
			14	8	1	5		
3	D	1	Total	C	N	O	0	0
			14	8	1	5		
3	F	1	Total	C	N	O	0	0
			14	8	1	5		

- Molecule 4 is SUGAR (O-SIALIC ACID) (three-letter code: SIA) (formula: $C_{11}H_{19}NO_9$).

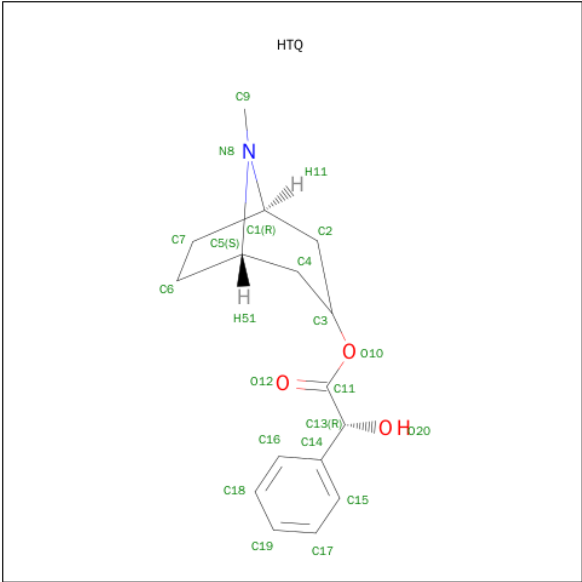


Mol	Chain	Residues	Atoms				ZeroOcc	AltConf
4	A	1	Total	C	N	O	0	0
			21	11	1	9		
4	B	1	Total	C	N	O	0	0
			21	11	1	9		
4	F	1	Total	C	N	O	0	0
			21	11	1	9		

- Molecule 5 is CHLORIDE ION (three-letter code: CL) (formula: Cl).

Mol	Chain	Residues	Atoms		ZeroOcc	AltConf
5	A	1	Total	Cl	0	0
			1	1		
5	E	1	Total	Cl	0	0
			1	1		

- Molecule 6 is HOMOTROPINE (three-letter code: HTQ) (formula: $C_{16}H_{21}NO_3$).



Mol	Chain	Residues	Atoms				ZeroOcc	AltConf
6	A	1	Total	C	N	O	0	0
			20	16	1	3		
6	B	1	Total	C	N	O	0	0
			20	16	1	3		
6	C	1	Total	C	N	O	0	0
			20	16	1	3		
6	D	1	Total	C	N	O	0	0
			20	16	1	3		
6	E	1	Total	C	N	O	0	0
			20	16	1	3		
6	F	1	Total	C	N	O	0	0
			20	16	1	3		
6	A	1	Total	C	N	O	0	1
			40	32	2	6		
6	B	1	Total	C	N	O	0	1
			40	32	2	6		
6	C	1	Total	C	N	O	0	1
			40	32	2	6		
6	D	1	Total	C	N	O	0	1
			40	32	2	6		
6	E	1	Total	C	N	O	0	1
			40	32	2	6		
6	F	1	Total	C	N	O	0	1
			40	32	2	6		

- Molecule 7 is water.

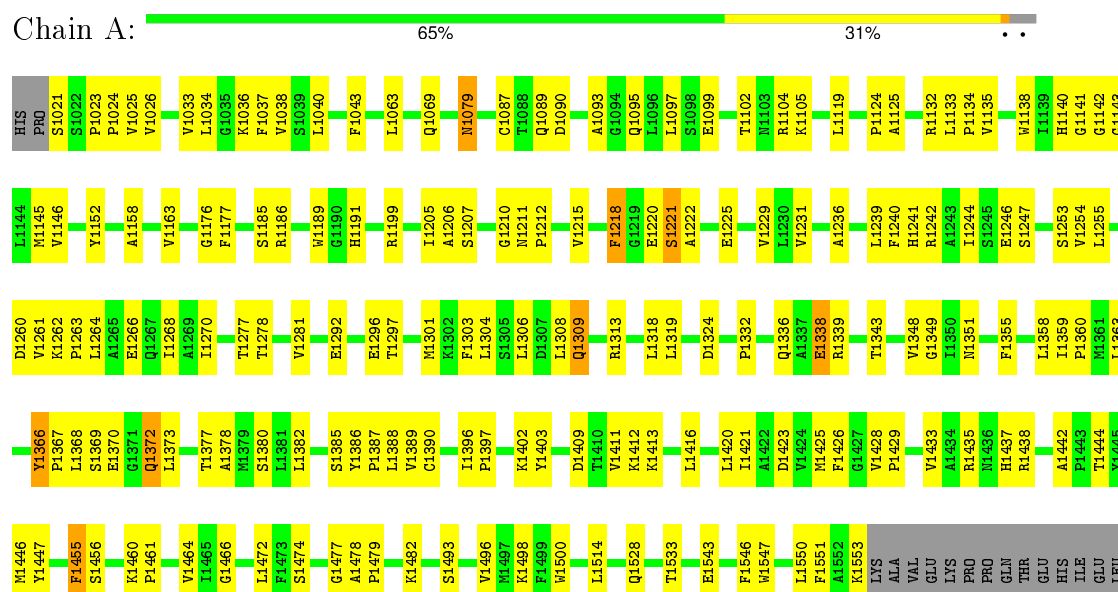
Mol	Chain	Residues	Atoms		ZeroOcc	AltConf
7	A	249	Total 249	O 249	0	0
7	B	303	Total 303	O 303	0	0
7	C	289	Total 289	O 289	0	0
7	D	291	Total 291	O 291	0	0
7	E	295	Total 295	O 295	0	0
7	F	254	Total 254	O 254	0	0

3 Residue-property plots

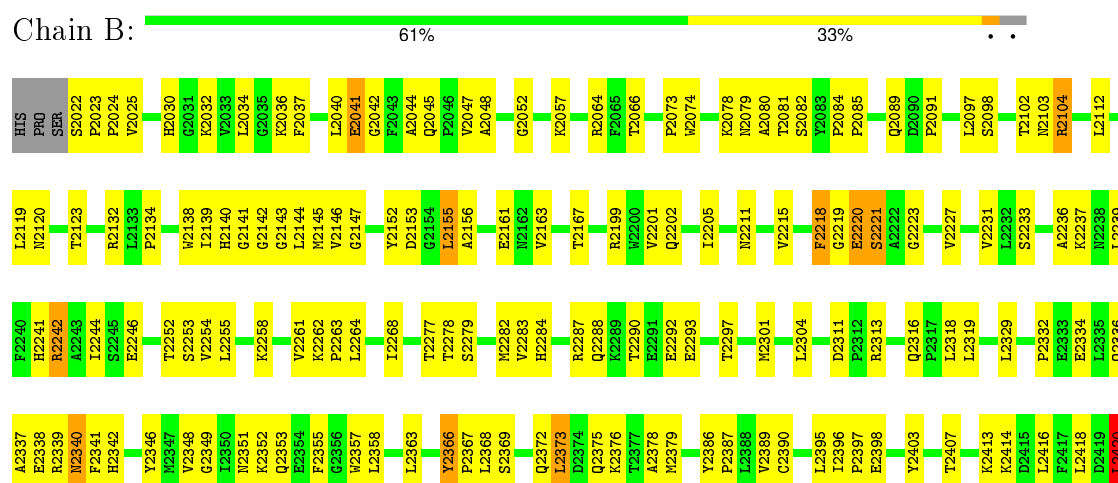
These plots are drawn for all protein, RNA and DNA chains in the entry. The first graphic for a chain summarises the proportions of errors displayed in the second graphic. The second graphic shows the sequence view annotated by issues in geometry and electron density. Residues are color-coded according to the number of geometric quality criteria for which they contain at least one outlier: green = 0, yellow = 1, orange = 2 and red = 3 or more. A red dot above a residue indicates a poor fit to the electron density ($\text{RSRZ} > 2$). Stretches of 2 or more consecutive residues without any outlier are shown as a green connector. Residues present in the sample, but not in the model, are shown in grey.

Note EDS was not executed.

• Molecule 1: liver Carboxylesterase I



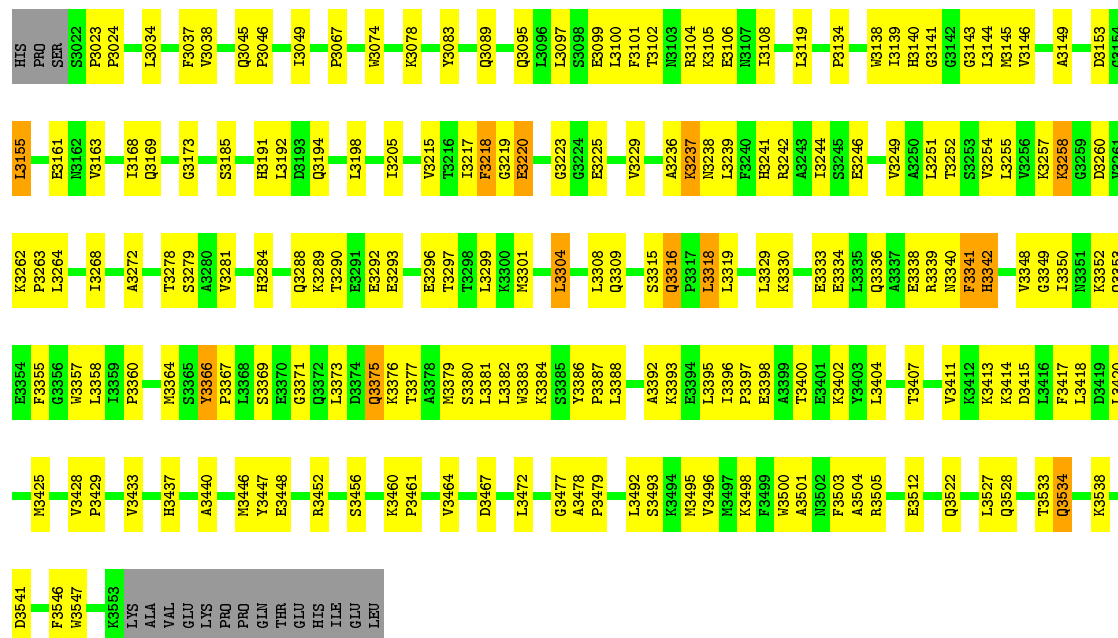
• Molecule 1: liver Carboxylesterase I





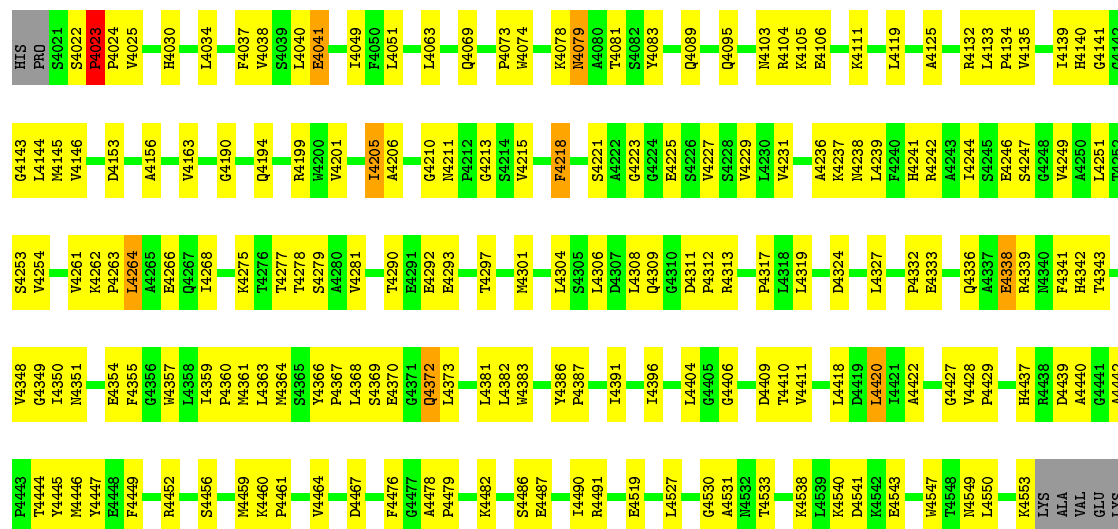
• Molecule 1: liver Carboxylesterase I

Chain C: 62% 32%



• Molecule 1: liver Carboxylesterase I

Chain D: 64% 32%



PRO
PRO
GLN
THR
GLU
HIS
ILE
GLU
LEU

• Molecule 1: liver Carboxylesterase I

Chain E:



A5552	H5553	N5540	V5541	F5541	F5542	T5543	V5544	V5548	N5551	E5554	F5555	G5556	H5557	L5558	T5559	P5560	M5561	L5563	M5564	S5565	P5567	L5568	L5581	L5582	H5583	K5584	S5585	S5586	P5587	L5588	T5591	A5592	K5593	E5594	L5595	T5596	P5597	K5602	F5603	L5604	S5605	L5606	D5611	P5612	R5613	E5614	S5615	Q5616	P5617	L5618	L5619	L5628	P5629	D5630	V5631	K5632	P5633	L5634	Q5635	T5636	H5637	L5638	T5639	P5640	M5641	L5642	V5643	H5644	L5648	L5649	S5656	K5660	P5661	K5662	T5663	V5664	H5668	L5671	L5672	A5678	P5679	F5680	E5681	L5682	K5683	E5684	R5685	L5686	V5687	L5688	T5691	A5692	K5693	E5694	M5695	M5696	P5697	L5698	T5699	K5700	M5701	L5702	E5703	F5704	S5705	P5706	L5707	S5708	E5709	P5710	T5711	N5712	H5713	L5714	L5715	L5716	L5717	V5718	V5719	K5720	L5721	E5722	P5723	L5724	L5725	L5726	L5727	L5728	L5729	L5730	L5731	L5732	L5733	L5734	L5735	L5736	L5737	L5738	L5739	L5740	L5741	L5742	L5743	L5744	L5745	L5746	L5747	L5748	L5749	L5750	L5751	L5752	L5753	L5754	L5755	L5756	L5757	L5758	L5759	L5760	L5761	L5762	L5763	L5764	L5765	L5766	L5767	L5768	L5769	L5770	L5771	L5772	L5773	L5774	L5775	L5776	L5777	L5778	L5779	L5780	L5781	L5782	L5783	L5784	L5785	L5786	L5787	L5788	L5789	L5790	L5791	L5792	L5793	L5794	L5795	L5796	L5797	L5798	L5799	L5800	L5801	L5802	L5803	L5804	L5805	L5806	L5807	L5808	L5809	L5810	L5811	L5812	L5813	L5814	L5815	L5816	L5817	L5818	L5819	L5820	L5821	L5822	L5823	L5824	L5825	L5826	L5827	L5828	L5829	L5830	L5831	L5832	L5833	L5834	L5835	L5836	L5837	L5838	L5839	L5840	L5841	L5842	L5843	L5844	L5845	L5846	L5847	L5848	L5849	L5850	L5851	L5852	L5853	L5854	L5855	L5856	L5857	L5858	L5859	L5860	L5861	L5862	L5863	L5864	L5865	L5866	L5867	L5868	L5869	L5870	L5871	L5872	L5873	L5874	L5875	L5876	L5877	L5878	L5879	L5880	L5881	L5882	L5883	L5884	L5885	L5886	L5887	L5888	L5889	L5890	L5891	L5892	L5893	L5894	L5895	L5896	L5897	L5898	L5899	L5900	L5901	L5902	L5903	L5904	L5905	L5906	L5907	L5908	L5909	L5910	L5911	L5912	L5913	L5914	L5915	L5916	L5917	L5918	L5919	L5920	L5921	L5922	L5923	L5924	L5925	L5926	L5927	L5928	L5929	L5930	L5931	L5932	L5933	L5934	L5935	L5936	L5937	L5938	L5939	L5940	L5941	L5942	L5943	L5944	L5945	L5946	L5947	L5948	L5949	L5950	L5951	L5952	L5953	L5954	L5955	L5956	L5957	L5958	L5959	L5960	L5961	L5962	L5963	L5964	L5965	L5966	L5967	L5968	L5969	L5970	L5971	L5972	L5973	L5974	L5975	L5976	L5977	L5978	L5979	L5980	L5981	L5982	L5983	L5984	L5985	L5986	L5987	L5988	L5989	L5990	L5991	L5992	L5993	L5994	L5995	L5996	L5997	L5998	L5999	L6000	L6001	L6002	L6003	L6004	L6005	L6006	L6007	L6008	L6009	L6010	L6011	L6012	L6013	L6014	L6015	L6016	L6017	L6018	L6019	L6020	L6021	L6022	L6023	L6024	L6025	L6026	L6027	L6028	L6029	L6030	L6031	L6032	L6033	L6034	L6035	L6036	L6037	L6038	L6039	L6040	L6041	L6042	L6043	L6044	L6045	L6046	L6047	L6048	L6049	L6050	L6051	L6052	L6053	L6054	L6055	L6056	L6057	L6058	L6059	L6060	L6061	L6062	L6063	L6064	L6065	L6066	L6067	L6068	L6069	L6070	L6071	L6072	L6073	L6074	L6075	L6076	L6077	L6078	L6079	L6080	L6081	L6082	L6083	L6084	L6085	L6086	L6087	L6088	L6089	L6090	L6091	L6092	L6093	L6094	L6095	L6096	L6097	L6098	L6099	L6100	L6101	L6102	L6103	L6104	L6105	L6106	L6107	L6108	L6109	L6110	L6111	L6112	L6113	L6114	L6115	L6116	L6117	L6118	L6119	L6120	L6121	L6122	L6123	L6124	L6125	L6126	L6127	L6128	L6129	L6130	L6131	L6132	L6133	L6134	L6135	L6136	L6137	L6138	L6139	L6140	L6141	L6142	L6143	L6144	L6145	L6146	L6147	L6148	L6149	L6150	L6151	L6152	L6153	L6154	L6155	L6156	L6157	L6158	L6159	L6160	L6161	L6162	L6163	L6164	L6165	L6166	L6167	L6168	L6169	L6170	L6171	L6172	L6173	L6174	L6175	L6176	L6177	L6178	L6179	L6180	L6181	L6182	L6183	L6184	L6185	L6186	L6187	L6188	L6189	L6190	L6191	L6192	L6193	L6194	L6195	L6196	L6197	L6198	L6199	L6200	L6201	L6202	L6203	L6204	L6205	L6206	L6207	L6208	L6209	L6210	L6211	L6212	L6213	L6214	L6215	L6216	L6217	L6218	L6219	L6220	L6221	L6222	L6223	L6224	L6225	L6226	L6227	L6228	L6229	L6230	L6231	L6232	L6233	L6234	L6235	L6236	L6237	L6238	L6239	L6240	L6241	L6242	L6243	L6244	L6245	L6246	L6247	L6248	L6249	L6250	L6251	L6252	L6253	L6254	L6255	L6256	L6257	L6258	L6259	L6260	L6261	L6262	L6263	L6264	L6265	L6266	L6267	L6268	L6269	L6270	L6271	L6272	L6273	L6274	L6275	L6276	L6277	L6278	L6279	L6280	L6281	L6282	L6283	L6284	L6285	L6286	L6287	L6288	L6289	L6290	L6291	L6292	L6293	L6294	L6295	L6296	L6297	L6298	L6299	L6300	L6301	L6302	L6303	L6304	L6305	L6306	L6307	L6308	L6309	L6310	L6311	L6312	L6313	L6314	L6315	L6316	L6317	L6318	L6319	L6320	L6321	L6322	L6323	L6324	L6325	L6326	L6327	L6328	L6329	L6330	L6331	L6332	L6333	L6334	L6335	L6336	L6337	L6338	L6339	L6340	L6341	L6342	L6343	L6344	L6345	L6346	L6347	L6348	L6349	L6350	L6351	L6352	L6353	L6354	L6355	L6356	L6357	L6358	L6359	L6360	L6361	L6362	L6363	L6364	L6365	L6366	L6367	L6368	L6369	L6370	L6371	L6372	L6373	L6374	L6375	L6376	L6377	L6378	L6379	L6380	L6381	L6382	L6383	L6384	L6385	L6386	L6387	L6388	L6389	L6390	L6391	L6392	L6393	L6394	L6395	L6396	L6397	L6398	L6399	L6400	L6401	L6402	L6403	L6404	L6405	L6406	L6407	L6408	L6409	L6410	L6411	L6412	L6413	L6414	L6415	L6416	L6417	L6418	L6419	L6420	L6421	L6422	L6423	L6424	L6425	L6426	L6427	L6428	L6429	L6430	L6431	L6432	L6433	L6434	L6435	L6436	L6437	L6438	L6439	L6440	L6441	L6442	L6443	L6444	L6445	L6446	L6447	L6448	L6449	L6450	L6451	L6452	L6453	L6454	L6455	L6456	L6457	L6458	L6459	L6460	L6461	L6462	L6463	L6464	L6465	L6466	L6467	L6468	L6469	L6470	L6471	L6472	L6473	L6474	L6475	L6476	L6477	L6478	L6479	L6480	L6481	L6482	L6483	L6484	L6485	L6486	L6487	L6488	L6489	L6490	L6491	L6492	L6493	L6494	L6495	L6496	L6497	L6498	L6499	L6500	L6501	L6502	L6503	L6504	L6505	L6506	L6507	L6508	L6509	L6510	L6511	L6512	L6513	L6514	L6515	L6516	L6517	L6518	L6519	L6520	L6521	L6522	L6523	L6524	L6525	L6526	L6527	L6528	L6529	L6530	L6531	L6532	L6533	L6534	L6535	L6536	L6537	L6538	L6539	L6540	L6541	L6542	L6543	L6544	L6545	L6546	L6547	L6548	L6549	L6550	L6551	L6552	L6553	L6554	L6555	L6556	L6557	L6558	L6559	L6560	L6561	L6562	L6563	L6564	L6565	L6566	L6567	L6568	L6569	L6570	L6571	L6572	L6573	L6574	L6575	L6576	L6577	L6578	L6579	L6580	L6581	L6582	L6583	L6584	L6585	L6586	L6587	L6588	L6589	L6590	L6591	L6592	L6593	L6594	L6595	L6596	L6597	L6598	L6599	L6600	L6601	L6602	L6603	L6604	L6605	L6606	L6607	L6608	L6609	L6610	L6611	L6612	L6613	L6614	L6615	L6616	L6617	L6618	L6619	L6620	L6621	L6622	L6623	L6624	L6625	L6626	L6627	L6628	L6629	L6630	L6631	L6632	L6633	L6634	L6635	L6636	L6637	L6638	L6639	L6640	L6641	L6642	L6643	L6644	L6645	L6646	L6647	L6648	L6649	L6650	L6651	L6652	L6653	L6654	L6655	L6656	L6657	L6658	L6659	L6660	L6661	L6662	L6663	L6664	L6665	L6666	L6667	L6668	L6669	L6670	L6671	L6672	L6673	L6674	L6675	L6676	L6677	L6678	L6679	L6680	L6681	L6682	L6683	L6684	L6685	L6686	L6687	L6688	L6689	L6690	L6691	L6692	L6693	L6694	L6695	L6696	L6697	L6698	L6699	L6700	L6701	L6702	L6703	L6704	L6705	L6706	L6707	L6708	L6709	L6710	L6711	L6712	L6713	L6714	L6715	L6716	L6717	L6718	L6719	L6720	L6721	L6722	L6723	L6724	L6725	L6726	L6727	L6728	L6729	L6730	L6731	L6732	L6733	L6734	L6735	L6736	L6737	L6738	L6739	L6740	L6741	L6742	L6743	L6744	L6745	L6746	L6747	L6748	L6749	L6750	L6751	L6752	L6753	L6754	L6755	L6756	L6757	L6758	L6759	L6760	L6761	L6762	L6763	L6764	L6765	L6766	L6767	L6768	L6769	L6770	L6771	L6772	L6773	L6774	L6775	L6776	L6777	L6778	L6779	L6780	L6781	L6782	L6783	L6784	L6785	L6786	L6787	L6788	L6789	L6790	L6791	L6792	L6793	L6794	L6795	L6796	L6797	L6798	L6799	L6800	L6801	L6802	L6803	L6804	L6805	L6806	L6807	L6808	L6809	L6810	L6811	L6812	L6813	L6814	L6815	L6816	L6817	L6818	L6819	L6820	L6821	L6822	L6823	L6824	L6825	L6826	L6827	L6828	L6829	L6830	L6831	L6832	L6833	L6834	L6835	L6836	L6837	L6838	L6839	L6840	L6841	L6842	L6843	L6844	L6845	L6846	L6847	L6848	L6849	L6850	L6851	L6852	L6853	L6854	L6855	L6856	L6857	L6858	L6859	L6860	L6861	L6862	L6863	L6864	L6865	L6866	L6867	L6868	L6869	L6870	L6871	L6872	L6873	L6874	L6875	L6876	L6877	L6878	L6879	L6880	L6881	L6882	L6883	L6884	L6885	L6886	L6887	L6888	L6889	L6890	L6891	L6892	L6893	L6894	L6895	L6896	L6897	L6898	L6899	L6900	L6901	L6902	L6903	L6904	L6905	L6906	L6907	L6908	L6909	L6910	L6911	L6912	L6913	L6914	L6915	L6916	L6917	L6918	L6919	L6920	L6921	L6922	L6923	L6924	L6925	L6926	L6927	L6928	L6929	L6930	L6931	L6932	L6933	L6934	L6935	L6936	L6937	L6938	L6939	L6940	L6941	L6942	L6943	L6944	L6945	L6946	L6947	L6948	L6949	L6950	L6951	L6952	L6953	L6954	L6955	L6956	L6957	L6958	L6959	L6960	L6961	L6962	L6963	L6964	L6965	L6966	L6967	L6968	L6969	L6970	L6971	L6972	L6973	L6974	L6
-------	-------	-------	-------	-------	-------	-------	-------	-------	-------	-------	-------	-------	-------	-------	-------	-------	-------	-------	-------	-------	-------	-------	-------	-------	-------	-------	-------	-------	-------	-------	-------	-------	-------	-------	-------	-------	-------	-------	-------	-------	-------	-------	-------	-------	-------	-------	-------	-------	-------	-------	-------	-------	-------	-------	-------	-------	-------	-------	-------	-------	-------	-------	-------	-------	-------	-------	-------	-------	-------	-------	-------	-------	-------	-------	-------	-------	-------	-------	-------	-------	-------	-------	-------	-------	-------	-------	-------	-------	-------	-------	-------	-------	-------	-------	-------	-------	-------	-------	-------	-------	-------	-------	-------	-------	-------	-------	-------	-------	-------	-------	-------	-------	-------	-------	-------	-------	-------	-------	-------	-------	-------	-------	-------	-------	-------	-------	-------	-------	-------	-------	-------	-------	-------	-------	-------	-------	-------	-------	-------	-------	-------	-------	-------	-------	-------	-------	-------	-------	-------	-------	-------	-------	-------	-------	-------	-------	-------	-------	-------	-------	-------	-------	-------	-------	-------	-------	-------	-------	-------	-------	-------	-------	-------	-------	-------	-------	-------	-------	-------	-------	-------	-------	-------	-------	-------	-------	-------	-------	-------	-------	-------	-------	-------	-------	-------	-------	-------	-------	-------	-------	-------	-------	-------	-------	-------	-------	-------	-------	-------	-------	-------	-------	-------	-------	-------	-------	-------	-------	-------	-------	-------	-------	-------	-------	-------	-------	-------	-------	-------	-------	-------	-------	-------	-------	-------	-------	-------	-------	-------	-------	-------	-------	-------	-------	-------	-------	-------	-------	-------	-------	-------	-------	-------	-------	-------	-------	-------	-------	-------	-------	-------	-------	-------	-------	-------	-------	-------	-------	-------	-------	-------	-------	-------	-------	-------	-------	-------	-------	-------	-------	-------	-------	-------	-------	-------	-------	-------	-------	-------	-------	-------	-------	-------	-------	-------	-------	-------	-------	-------	-------	-------	-------	-------	-------	-------	-------	-------	-------	-------	-------	-------	-------	-------	-------	-------	-------	-------	-------	-------	-------	-------	-------	-------	-------	-------	-------	-------	-------	-------	-------	-------	-------	-------	-------	-------	-------	-------	-------	-------	-------	-------	-------	-------	-------	-------	-------	-------	-------	-------	-------	-------	-------	-------	-------	-------	-------	-------	-------	-------	-------	-------	-------	-------	-------	-------	-------	-------	-------	-------	-------	-------	-------	-------	-------	-------	-------	-------	-------	-------	-------	-------	-------	-------	-------	-------	-------	-------	-------	-------	-------	-------	-------	-------	-------	-------	-------	-------	-------	-------	-------	-------	-------	-------	-------	-------	-------	-------	-------	-------	-------	-------	-------	-------	-------	-------	-------	-------	-------	-------	-------	-------	-------	-------	-------	-------	-------	-------	-------	-------	-------	-------	-------	-------	-------	-------	-------	-------	-------	-------	-------	-------	-------	-------	-------	-------	-------	-------	-------	-------	-------	-------	-------	-------	-------	-------	-------	-------	-------	-------	-------	-------	-------	-------	-------	-------	-------	-------	-------	-------	-------	-------	-------	-------	-------	-------	-------	-------	-------	-------	-------	-------	-------	-------	-------	-------	-------	-------	-------	-------	-------	-------	-------	-------	-------	-------	-------	-------	-------	-------	-------	-------	-------	-------	-------	-------	-------	-------	-------	-------	-------	-------	-------	-------	-------	-------	-------	-------	-------	-------	-------	-------	-------	-------	-------	-------	-------	-------	-------	-------	-------	-------	-------	-------	-------	-------	-------	-------	-------	-------	-------	-------	-------	-------	-------	-------	-------	-------	-------	-------	-------	-------	-------	-------	-------	-------	-------	-------	-------	-------	-------	-------	-------	-------	-------	-------	-------	-------	-------	-------	-------	-------	-------	-------	-------	-------	-------	-------	-------	-------	-------	-------	-------	-------	-------	-------	-------	-------	-------	-------	-------	-------	-------	-------	-------	-------	-------	-------	-------	-------	-------	-------	-------	-------	-------	-------	-------	-------	-------	-------	-------	-------	-------	-------	-------	-------	-------	-------	-------	-------	-------	-------	-------	-------	-------	-------	-------	-------	-------	-------	-------	-------	-------	-------	-------	-------	-------	-------	-------	-------	-------	-------	-------	-------	-------	-------	-------	-------	-------	-------	-------	-------	-------	-------	-------	-------	-------	-------	-------	-------	-------	-------	-------	-------	-------	-------	-------	-------	-------	-------	-------	-------	-------	-------	-------	-------	-------	-------	-------	-------	-------	-------	-------	-------	-------	-------	-------	-------	-------	-------	-------	-------	-------	-------	-------	-------	-------	-------	-------	-------	-------	-------	-------	-------	-------	-------	-------	-------	-------	-------	-------	-------	-------	-------	-------	-------	-------	-------	-------	-------	-------	-------	-------	-------	-------	-------	-------	-------	-------	-------	-------	-------	-------	-------	-------	-------	-------	-------	-------	-------	-------	-------	-------	-------	-------	-------	-------	-------	-------	-------	-------	-------	-------	-------	-------	-------	-------	-------	-------	-------	-------	-------	-------	-------	-------	-------	-------	-------	-------	-------	-------	-------	-------	-------	-------	-------	-------	-------	-------	-------	-------	-------	-------	-------	-------	-------	-------	-------	-------	-------	-------	-------	-------	-------	-------	-------	-------	-------	-------	-------	-------	-------	-------	-------	-------	-------	-------	-------	-------	-------	-------	-------	-------	-------	-------	-------	-------	-------	-------	-------	-------	-------	-------	-------	-------	-------	-------	-------	-------	-------	-------	-------	-------	-------	-------	-------	-------	-------	-------	-------	-------	-------	-------	-------	-------	-------	-------	-------	-------	-------	-------	-------	-------	-------	-------	-------	-------	-------	-------	-------	-------	-------	-------	-------	-------	-------	-------	-------	-------	-------	-------	-------	-------	-------	-------	-------	-------	-------	-------	-------	-------	-------	-------	-------	-------	-------	-------	-------	-------	-------	-------	-------	-------	-------	-------	-------	-------	-------	-------	-------	-------	-------	-------	-------	-------	-------	-------	-------	-------	-------	-------	-------	-------	-------	-------	-------	-------	-------	-------	-------	-------	-------	-------	-------	-------	-------	-------	-------	-------	-------	-------	-------	-------	-------	-------	-------	-------	-------	-------	-------	-------	-------	-------	-------	-------	-------	-------	-------	-------	-------	-------	-------	-------	-------	-------	-------	-------	-------	-------	-------	-------	-------	-------	-------	-------	-------	-------	-------	-------	-------	-------	-------	-------	-------	-------	-------	-------	-------	-------	-------	-------	-------	-------	-------	-------	-------	-------	-------	-------	-------	-------	-------	-------	-------	-------	-------	-------	-------	-------	-------	-------	-------	-------	-------	-------	-------	-------	-------	-------	-------	-------	-------	-------	-------	-------	-------	-------	-------	-------	-------	-------	-------	-------	-------	-------	-------	-------	-------	-------	-------	-------	-------	-------	-------	-------	-------	-------	-------	-------	-------	-------	-------	-------	-------	-------	-------	-------	-------	-------	-------	-------	-------	-------	-------	-------	-------	-------	-------	-------	-------	-------	-------	-------	-------	-------	-------	-------	-------	-------	-------	-------	-------	-------	-------	-------	-------	-------	-------	-------	-------	-------	-------	-------	-------	-------	-------	-------	-------	-------	-------	-------	-------	-------	-------	-------	-------	-------	-------	-------	-------	-------	-------	-------	-------	-------	-------	-------	-------	-------	-------	-------	-------	-------	-------	-------	-------	-------	-------	-------	-------	-------	-------	-------	-------	-------	-------	-------	-------	-------	-------	-------	-------	-------	-------	-------	-------	-------	-------	-------	-------	-------	-------	-------	-------	-------	-------	-------	-------	-------	-------	-------	-------	-------	-------	-------	-------	-------	-------	-------	-------	-------	-------	-------	-------	-------	-------	-------	-------	-------	-------	-------	-------	-------	-------	-------	-------	-------	-------	-------	-------	-------	-------	-------	-------	-------	-------	-------	-------	-------	-------	-------	-------	-------	-------	-------	-------	-------	-------	-------	-------	-------	-------	-------	-------	-------	-------	-------	-------	-------	-------	-------	-------	-------	-------	-------	-------	-------	-------	-------	-------	-------	-------	-------	-------	-------	-------	-------	-------	-------	-------	-------	-------	-------	-------	-------	-------	-------	-------	-------	-------	-------	-------	-------	-------	-------	-------	-------	-------	-------	-------	-------	-------	-------	-------	-------	-------	-------	-------	-------	-------	-------	-------	-------	-------	-------	-------	-------	-------	-------	-------	-------	-------	-------	-------	-------	-------	-------	-------	-------	-------	-------	-------	-------	-------	-------	-------	-------	-------	-------	-------	-------	-------	-------	-------	-------	-------	-------	-------	-------	-------	-------	-------	-------	-------	-------	-------	-------	-------	-------	-------	-------	-------	-------	-------	-------	-------	-------	-------	-------	-------	-------	-------	-------	-------	-------	-------	-------	-------	-------	-------	-------	-------	-------	-------	-------	-------	-------	-------	-------	-------	-------	-------	-------	-------	-------	-------	-------	-------	-------	-------	-------	-------	-------	-------	-------	-------	-------	-------	-------	-------	-------	-------	-------	-------	-------	-------	-------	-------	-------	-------	-------	-------	-------	-------	-------	----

• Molecule 1: liver Carboxylesterase I

Chain F:



ALA	VAL	GLU	LYS	PRO	PRO	GLN	THR	GLU	HIS	ILE	GLU	LEU																																			
W6446	Y6447	G6448	F6449	R6452	F6455	S6456	K6460	P6461	V6464	L6465	G6466	D6467	H6468	L6472	A6478	P6479	F6480	L6481	K6482	B6488	B6491	K6498	F6499	M6500	A6501	R6505	L6514	B6519	Q6522	N6532	T6533	Q6534	K6538	L6539	K6540	D6541	R6542	B6543	V6544	H6547	R6553						
L6358	L6359	P6360	V6361	L6363	Y6366	P6367	L6368	S6369	E6370	G6371	Q6372	Q6375	S6385	V6386	P6387	L6388	C6390	L6396	P6397	B6398	E6401	V6402	Y6403	L6404	G6405	D6409	K6412	K6413	K6414	D6415	L6416	F6417	D6418	D6419	L6420	D6423	V6428	P6429	S6430	V6431	T6432	V6433	A6434	R6435	A6440	G6441	A6442
G6142	G6143	L6144	V6145	V6146	T6151	G6267	L6268	L6270	V6275	V6282	V6283	H6284	Q6288	B6292	L6299	L6304	S6305	L6306	G6310	D6311	P6312	R6313	B6314	S6315	Q6316	P6317	L6318	L6319	D6324	P6332	B6333	Q6336	R6339	N6340	P6341	H6342	T6343	V6348	G6349	L6350	L6351	B6354	P6355	G6356			
HIS	PRO	SER	S6022	P6023	P6024	V6025	H6030	L6034	G6035	R6036	F6037	V6038	S6039	L6040	A6048	G6052	K6057	P6058	B6072	N6079	S6082	V6083	Q6089	D6090	A6093	G6094	Q6095	B6099	T6102	N6103	R6104	K6105	B6106	N6107	L6108	L6119	T6123	L6127	P6134	V6135	H6140						

4 Data and refinement statistics

Xtriage (Phenix) and EDS were not executed - this section will therefore be incomplete.

Property	Value	Source
Space group	P 1 21 1	Depositor
Cell constants a, b, c, α , β , γ	55.40 Å 178.80 Å 199.60 Å 90.00° 90.20° 90.00°	Depositor
Resolution (Å)	19.96 – 2.80	Depositor
% Data completeness (in resolution range)	92.3 (19.96-2.80)	Depositor
R_{merge}	(Not available)	Depositor
R_{sym}	(Not available)	Depositor
Refinement program	CNS 1.0	Depositor
R, R_{free}	0.158 , 0.221	Depositor
Estimated twinning fraction	No twinning to report.	Xtriage
Total number of atoms	26960	wwPDB-VP
Average B, all atoms (Å ²)	31.0	wwPDB-VP

5 Model quality [i](#)

5.1 Standard geometry [i](#)

Bond lengths and bond angles in the following residue types are not validated in this section: HTQ, SIA, NAG, NDG, CL

The Z score for a bond length (or angle) is the number of standard deviations the observed value is removed from the expected value. A bond length (or angle) with $|Z| > 5$ is considered an outlier worth inspection. RMSZ is the root-mean-square of all Z scores of the bond lengths (or angles).

Mol	Chain	Bond lengths		Bond angles	
		RMSZ	$\# Z > 5$	RMSZ	$\# Z > 5$
1	A	0.33	0/4236	0.57	0/5754
1	B	0.34	0/4230	0.59	1/5746 (0.0%)
1	C	0.34	0/4230	0.58	0/5746
1	D	0.34	0/4236	0.59	1/5754 (0.0%)
1	E	0.33	0/4230	0.60	0/5746
1	F	0.33	0/4230	0.58	0/5746
All	All	0.34	0/25392	0.58	2/34492 (0.0%)

There are no bond length outliers.

All (2) bond angle outliers are listed below:

Mol	Chain	Res	Type	Atoms	Z	Observed(°)	Ideal(°)
1	B	2420	LEU	CA-CB-CG	5.32	127.53	115.30
1	D	4420	LEU	CA-CB-CG	5.05	126.91	115.30

There are no chirality outliers.

There are no planarity outliers.

5.2 Too-close contacts [i](#)

In the following table, the Non-H and H(model) columns list the number of non-hydrogen atoms and hydrogen atoms in the chain respectively. The H(added) column lists the number of hydrogen atoms added and optimized by MolProbity. The Clashes column lists the number of clashes within the asymmetric unit, whereas Symm-Clashes lists symmetry related clashes.

Mol	Chain	Non-H	H(model)	H(added)	Clashes	Symm-Clashes
1	A	4130	0	4131	161	0
1	B	4124	0	4126	181	0
1	C	4124	0	4126	174	0

Continued on next page...

Continued from previous page...

Mol	Chain	Non-H	H(model)	H(added)	Clashes	Symm-Clashes
1	D	4130	0	4131	137	0
1	E	4124	0	4126	178	0
1	F	4124	0	4126	152	0
2	A	14	0	13	0	0
2	C	14	0	13	0	0
2	E	28	0	26	2	0
3	B	14	0	13	3	0
3	D	14	0	13	2	0
3	F	14	0	13	3	0
4	A	21	0	18	5	0
4	B	21	0	18	17	0
4	F	21	0	18	5	0
5	A	1	0	0	5	0
5	E	1	0	0	2	0
6	A	60	0	63	21	0
6	B	60	0	63	14	0
6	C	60	0	63	11	0
6	D	60	0	63	12	0
6	E	60	0	63	15	0
6	F	60	0	63	13	0
7	A	249	0	0	13	0
7	B	303	0	0	26	0
7	C	289	0	0	27	0
7	D	291	0	0	15	0
7	E	295	0	0	20	0
7	F	254	0	0	25	0
All	All	26960	0	25289	991	0

The all-atom clashscore is defined as the number of clashes found per 1000 atoms (including hydrogen atoms). The all-atom clashscore for this structure is 20.

All (991) close contacts within the same asymmetric unit are listed below, sorted by their clash magnitude.

Atom-1	Atom-2	Interatomic distance (Å)	Clash overlap (Å)
1:E:5221:SER:HB3	5:E:15:CL:CL	1.58	1.39
1:F:6258:LYS:H	1:F:6258:LYS:HE2	1.17	1.08
1:C:3258:LYS:H	1:C:3258:LYS:HE2	1.19	1.02
1:B:2304:LEU:HD13	6:B:212:HTQ:H171	1.39	1.01
1:B:2134:PRO:HG2	1:B:2163:VAL:HG12	1.43	1.00
1:B:2079:ASN:HB3	4:B:282:SIA:H113	1.41	1.00
1:E:5221:SER:CB	5:E:15:CL:CL	2.48	0.98

Continued on next page...

Continued from previous page...

Atom-1	Atom-2	Interatomic distance (Å)	Clash overlap (Å)
1:C:3339:ARG:HD2	1:C:3440:ALA:HA	1.48	0.96
1:F:6215:VAL:H	1:F:6241:HIS:HD2	1.06	0.96
4:B:282:SIA:H92	1:C:3278:THR:HA	1.48	0.94
1:E:5215:VAL:H	1:E:5241:HIS:HD2	0.95	0.94
1:A:1134:PRO:HG2	1:A:1163:VAL:HG12	1.51	0.92
1:E:5317:PRO:HG2	1:E:5387:PRO:HB3	1.52	0.92
1:A:1215:VAL:H	1:A:1241:HIS:HD2	1.18	0.92
1:C:3215:VAL:H	1:C:3241:HIS:HD2	1.00	0.91
1:E:5317:PRO:CG	1:E:5387:PRO:HB3	2.00	0.91
1:B:2395:LEU:HB3	1:B:2550:LEU:HD11	1.51	0.91
1:E:5091:PRO:HG3	1:E:5112:LEU:HD11	1.51	0.90
7:D:7908:HOH:O	4:F:682:SIA:H91	1.72	0.90
1:E:5215:VAL:H	1:E:5241:HIS:CD2	1.87	0.90
1:C:3215:VAL:H	1:C:3241:HIS:CD2	1.88	0.89
3:B:279:NDG:H2	7:B:7845:HOH:O	1.72	0.88
1:A:1304:LEU:HD13	6:A:111:HTQ:H171	1.55	0.87
1:D:4242:ARG:HG2	1:D:4242:ARG:HH11	1.40	0.87
1:B:2290:THR:OG1	1:B:2293:GLU:HG3	1.75	0.86
1:B:2237:LYS:HA	1:B:2342:HIS:CE1	2.10	0.86
1:C:3296:GLU:HB3	7:C:7587:HOH:O	1.74	0.85
1:A:1368:LEU:HB2	6:A:1[Z]:HTQ:H151	1.57	0.85
1:B:2215:VAL:H	1:B:2241:HIS:HD2	1.22	0.85
1:F:6258:LYS:N	1:F:6258:LYS:HE2	1.90	0.85
2:E:579:NAG:O4	2:E:580:NAG:H5	1.78	0.83
1:A:1423:ASP:OD2	1:A:1543:GLU:HG2	1.78	0.83
4:B:282:SIA:H92	1:C:3278:THR:CA	2.08	0.83
1:F:6498:LYS:HB3	1:F:6514:LEU:HD11	1.62	0.81
1:D:4215:VAL:H	1:D:4241:HIS:HD2	1.27	0.81
1:C:3134:PRO:HG2	1:C:3163:VAL:HG12	1.62	0.80
1:A:1363:LEU:HD22	6:A:111:HTQ:H181	1.63	0.80
1:E:5343:THR:HG21	1:E:5437:HIS:HE1	1.45	0.80
1:E:5104:ARG:HD3	7:E:7408:HOH:O	1.82	0.79
1:B:2132:ARG:HB3	1:B:2211:ASN:HB2	1.64	0.79
1:D:4290:THR:OG1	1:D:4293:GLU:HG3	1.83	0.79
1:E:5311:ASP:HB3	1:E:5314:GLU:HG2	1.65	0.78
1:F:6255:LEU:HD11	6:F:616:HTQ:H91	1.64	0.78
1:F:6343:THR:HA	7:F:7102:HOH:O	1.82	0.78
1:C:3392:ALA:HB3	1:C:3395:LEU:HG	1.65	0.78
1:D:4132:ARG:HB3	1:D:4211:ASN:HB2	1.66	0.78
1:A:1023:PRO:HB2	1:A:1034:LEU:HD21	1.65	0.78
1:C:3318:LEU:HB2	7:C:7622:HOH:O	1.83	0.77

Continued on next page...

Continued from previous page...

Atom-1	Atom-2	Interatomic distance (Å)	Clash overlap (Å)
1:E:5202:GLN:HE22	1:E:5215:VAL:HG21	1.47	0.77
1:D:4145:MET:HB2	1:D:4304:LEU:HD11	1.67	0.77
1:C:3268:ILE:HG12	1:C:3301:MET:HE2	1.65	0.77
1:F:6409:ASP:HB3	1:F:6412:LYS:HB3	1.67	0.77
1:A:1132:ARG:HB3	1:A:1211:ASN:HB2	1.65	0.77
1:F:6134:PRO:HG2	1:F:6163:VAL:HG12	1.67	0.76
1:F:6105:LYS:HG3	1:F:6106:GLU:H	1.48	0.76
1:E:5343:THR:HG21	1:E:5437:HIS:CE1	2.21	0.76
1:E:5130:LYS:HE3	1:E:5132:ARG:NH1	2.01	0.76
1:F:6275:LYS:HD2	7:F:8229:HOH:O	1.85	0.75
1:A:1261:VAL:HB	7:A:7809:HOH:O	1.85	0.75
4:A:182:SIA:H92	1:B:2279:SER:H	1.50	0.75
1:F:6339:ARG:HD2	1:F:6440:ALA:HA	1.68	0.75
1:B:2366:TYR:HB3	1:B:2368:LEU:HD13	1.69	0.75
1:A:1215:VAL:H	1:A:1241:HIS:CD2	2.05	0.75
1:E:5396:ILE:HB	1:E:5397:PRO:HD3	1.69	0.75
1:A:1355:PHE:CE1	1:A:1360:PRO:HG3	2.21	0.75
1:B:2142:GLY:HA2	6:B:212:HTQ:H131	1.68	0.75
1:F:6220:GLU:HG2	1:F:6472:LEU:HD21	1.69	0.75
1:E:5220:GLU:HG2	1:E:5472:LEU:HD21	1.68	0.74
1:F:6023:PRO:HB2	1:F:6034:LEU:HD21	1.67	0.74
1:D:4343:THR:HB	1:D:4442:ALA:HB2	1.69	0.74
1:D:4370:GLU:HG3	7:D:7641:HOH:O	1.87	0.74
1:A:1079:ASN:HB2	4:A:182:SIA:H113	1.69	0.74
1:F:6215:VAL:H	1:F:6241:HIS:CD2	1.98	0.74
1:F:6258:LYS:CE	1:F:6258:LYS:H	1.98	0.74
1:B:2220:GLU:OE2	1:B:2221:SER:HB2	1.86	0.74
1:C:3105:LYS:HG3	1:C:3106:GLU:H	1.53	0.74
1:B:2390:CYS:HB3	7:B:8305:HOH:O	1.87	0.74
1:B:2254:VAL:HG11	6:B:212:HTQ:H61	1.68	0.73
1:F:6095:GLN:O	1:F:6099:GLU:HG3	1.88	0.73
1:C:3258:LYS:CE	1:C:3258:LYS:H	1.98	0.73
1:E:5317:PRO:HB2	7:E:8626:HOH:O	1.88	0.73
1:E:5237:LYS:HG3	7:E:7151:HOH:O	1.88	0.73
1:B:2084:PRO:HA	4:B:282:SIA:O1B	1.89	0.73
1:C:3242:ARG:HH11	1:C:3242:ARG:HG2	1.52	0.72
1:B:2414:LYS:HZ2	6:B:2[Y]:HTQ:H181	1.53	0.72
1:E:5290:THR:OG1	1:E:5293:GLU:HG3	1.89	0.72
3:F:679:NDG:H8C2	4:F:682:SIA:O9	1.89	0.72
1:B:2023:PRO:HB3	1:B:2034:LEU:HD21	1.70	0.72
1:C:3290:THR:OG1	1:C:3293:GLU:HG3	1.90	0.72

Continued on next page...

Continued from previous page...

Atom-1	Atom-2	Interatomic distance (Å)	Clash overlap (Å)
1:F:6288:GLN:HG3	7:F:8386:HOH:O	1.89	0.72
1:E:5268:ILE:HD11	1:E:5319:LEU:HD21	1.72	0.71
1:D:4357:TRP:O	1:D:4360:PRO:HD2	1.90	0.71
1:F:6370:GLU:HG2	7:F:7775:HOH:O	1.90	0.71
1:C:3215:VAL:N	1:C:3241:HIS:HD2	1.83	0.71
1:E:5215:VAL:N	1:E:5241:HIS:HD2	1.79	0.71
1:A:1105:LYS:HD2	7:A:8564:HOH:O	1.88	0.70
1:B:2264:LEU:HD13	1:B:2316:GLN:HG3	1.72	0.70
1:F:6190:GLY:O	1:F:6194:GLN:HG3	1.91	0.70
1:E:5343:THR:CG2	1:E:5437:HIS:HE1	2.03	0.70
1:C:3105:LYS:HG3	1:C:3106:GLU:N	2.07	0.70
1:C:3339:ARG:HD2	1:C:3440:ALA:CA	2.20	0.70
1:C:3355:PHE:CE1	1:C:3360:PRO:HG3	2.27	0.70
1:E:5388:LEU:HD22	1:E:5425:MET:HE1	1.72	0.70
1:E:5318:LEU:HB2	7:E:8626:HOH:O	1.92	0.70
1:A:1236:ALA:HA	1:A:1239:LEU:HD12	1.74	0.70
1:D:4268:ILE:HD11	1:D:4319:LEU:HD21	1.72	0.69
1:B:2456:SER:HB3	1:B:2460:LYS:HD3	1.73	0.69
1:E:5363:LEU:HB3	6:E:515:HTQ:H181	1.74	0.69
1:A:1498:LYS:HB3	1:A:1514:LEU:HD11	1.74	0.69
1:C:3316:GLN:HA	1:C:3316:GLN:HE21	1.56	0.69
1:B:2082:SER:O	4:B:282:SIA:H32	1.93	0.69
1:E:5134:PRO:HG2	1:E:5163:VAL:HG12	1.75	0.69
4:A:182:SIA:C9	1:B:2279:SER:H	2.06	0.68
1:C:3417:PHE:O	1:C:3420:LEU:HB3	1.93	0.68
1:B:2252:THR:HG22	1:B:2254:VAL:HG12	1.74	0.68
1:E:5241:HIS:O	1:E:5344:VAL:HB	1.94	0.68
1:A:1255:LEU:HD11	6:A:111:HTQ:H91	1.74	0.68
1:F:6423:ASP:OD2	1:F:6543:GLU:HG2	1.94	0.68
1:F:6452:ARG:HB2	1:F:6465:ILE:HG12	1.76	0.68
1:C:3316:GLN:HE21	1:C:3316:GLN:CA	2.06	0.68
1:D:4456:SER:HB3	1:D:4460:LYS:HD3	1.75	0.68
1:E:5404:LEU:HB3	1:E:5413:LYS:HG2	1.76	0.67
1:F:6102:THR:OG1	1:F:6104:ARG:HG2	1.94	0.67
1:B:2215:VAL:H	1:B:2241:HIS:CD2	2.09	0.67
1:F:6260:ASP:OD2	1:F:6263:PRO:HD3	1.95	0.67
1:B:2237:LYS:HA	1:B:2342:HIS:HE1	1.57	0.67
1:F:6024:PRO:HG3	1:F:6037:PHE:CZ	2.30	0.67
1:F:6105:LYS:HG3	1:F:6106:GLU:N	2.09	0.67
1:B:2352:LYS:HG2	1:B:2450:GLN:HE21	1.59	0.67
1:C:3225:GLU:O	1:C:3229:VAL:HG23	1.95	0.67

Continued on next page...

Continued from previous page...

Atom-1	Atom-2	Interatomic distance (Å)	Clash overlap (Å)
1:B:2264:LEU:HD21	1:B:2319:LEU:HD23	1.78	0.66
1:F:6398:GLU:HG3	7:F:7627:HOH:O	1.94	0.66
1:D:4134:PRO:HG2	1:D:4163:VAL:HG12	1.75	0.66
1:E:5278:THR:OG1	1:E:5281:VAL:HG23	1.95	0.66
1:C:3278:THR:OG1	1:C:3281:VAL:HG23	1.95	0.66
1:C:3316:GLN:HA	1:C:3316:GLN:NE2	2.10	0.66
1:C:3254:VAL:HG11	6:C:313:HTQ:H61	1.76	0.66
1:C:3297:THR:O	1:C:3301:MET:HG2	1.94	0.66
1:E:5227:VAL:O	1:E:5231:VAL:HG23	1.95	0.66
1:C:3292:GLU:O	1:C:3296:GLU:HG3	1.96	0.66
1:F:6355:PHE:CE1	1:F:6360:PRO:HG3	2.30	0.66
1:B:2279:SER:O	1:B:2283:VAL:HG23	1.95	0.66
1:A:1396:ILE:HB	1:A:1397:PRO:HD3	1.78	0.66
1:B:2091:PRO:HG3	1:B:2112:LEU:HD11	1.76	0.66
1:C:3258:LYS:HE2	1:C:3258:LYS:N	2.03	0.66
1:C:3428:VAL:HB	1:C:3429:PRO:HD3	1.77	0.66
1:B:2097:LEU:HD13	6:B:212:HTQ:H161	1.78	0.65
1:D:4242:ARG:HG2	1:D:4242:ARG:NH1	2.12	0.65
1:D:4428:VAL:HB	1:D:4429:PRO:HD3	1.79	0.65
1:E:5317:PRO:HG3	1:E:5387:PRO:HB3	1.78	0.65
1:E:5395:LEU:HB3	1:E:5550:LEU:HD11	1.79	0.65
1:B:2084:PRO:HA	4:B:282:SIA:C1	2.26	0.65
1:F:6202:GLN:HG3	7:F:7812:HOH:O	1.97	0.65
1:F:6428:VAL:HB	1:F:6429:PRO:HD3	1.77	0.65
1:B:2084:PRO:HB3	4:B:282:SIA:O1A	1.97	0.65
1:A:1242:ARG:HG2	1:A:1242:ARG:HH11	1.62	0.65
1:F:6461:PRO:HB2	1:F:6464:VAL:HG23	1.79	0.65
1:B:2462:LYS:HG2	7:B:8127:HOH:O	1.96	0.65
1:E:5417:PHE:O	1:E:5420:LEU:HB3	1.98	0.64
1:C:3067:PRO:HB3	1:C:3192:LEU:HD13	1.79	0.64
1:B:2398:GLU:HG3	7:B:7416:HOH:O	1.97	0.64
1:E:5349:GLY:HA3	1:E:5447:TYR:CE1	2.32	0.64
1:C:3342:HIS:HB2	7:C:8259:HOH:O	1.98	0.64
1:D:4317:PRO:HD3	1:D:4387:PRO:HB2	1.80	0.64
1:E:5260:ASP:OD2	1:E:5263:PRO:HD3	1.98	0.64
1:F:6501:ALA:O	1:F:6505:ARG:HG2	1.98	0.64
1:D:4024:PRO:HG3	1:D:4037:PHE:CE1	2.33	0.64
1:C:3330:LYS:HB2	7:C:8029:HOH:O	1.97	0.64
1:A:1254:VAL:HG11	6:A:111:HTQ:H61	1.80	0.63
1:B:2052:GLY:HA3	4:B:282:SIA:H31	1.79	0.63
1:F:6420:LEU:HD12	1:F:6547:TRP:HZ2	1.63	0.63

Continued on next page...

Continued from previous page...

Atom-1	Atom-2	Interatomic distance (Å)	Clash overlap (Å)
1:C:3411:VAL:O	1:C:3414:LYS:HG2	1.99	0.63
1:A:1373:LEU:HD23	7:A:7567:HOH:O	1.97	0.63
1:E:5341:PHE:HD1	1:E:5343:THR:HG23	1.64	0.63
1:C:3464:VAL:HG22	6:C:3[Y]:HTQ:H191	1.80	0.63
1:C:3336:GLN:HE22	1:C:3433:VAL:HG13	1.62	0.63
1:A:1221:SER:HB3	5:A:11:CL:CL	2.34	0.63
1:C:3024:PRO:HG3	1:C:3037:PHE:CZ	2.33	0.63
1:D:4372:GLN:HG2	1:D:4410:THR:HB	1.79	0.63
1:B:2367:PRO:C	1:B:2368:LEU:HD12	2.19	0.62
1:A:1460:LYS:HE2	7:A:7357:HOH:O	1.99	0.62
1:B:2420:LEU:HD13	1:B:2547:TRP:CZ2	2.35	0.62
1:F:6368:LEU:HD12	6:F:6[Z]:HTQ:H151	1.81	0.62
1:D:4355:PHE:CE1	1:D:4360:PRO:HG3	2.33	0.62
1:C:3336:GLN:NE2	1:C:3433:VAL:HG13	2.14	0.62
1:A:1140:HIS:HD2	1:A:1141:GLY:O	1.83	0.62
1:A:1338:GLU:O	1:A:1339:ARG:HD2	2.00	0.62
4:B:282:SIA:C9	1:C:3278:THR:HA	2.24	0.62
1:E:5264:LEU:HD22	1:E:5316:GLN:HE21	1.65	0.62
1:A:1372:GLN:N	1:A:1372:GLN:HE21	1.96	0.62
1:D:4338:GLU:HG2	1:D:4341:PHE:HB2	1.82	0.62
1:E:5102:THR:OG1	1:E:5104:ARG:HG2	1.99	0.62
1:A:1277:THR:HG22	1:A:1278:THR:HG23	1.81	0.62
1:F:6083:TYR:CE2	1:F:6108:ILE:HD13	2.35	0.62
1:E:5403:TYR:CD1	1:E:5420:LEU:HD13	2.34	0.62
1:D:4370:GLU:HB3	1:D:4372:GLN:NE2	2.15	0.62
1:B:2202:GLN:HE22	1:B:2215:VAL:HG21	1.63	0.62
1:F:6089:GLN:HB2	1:F:6146:VAL:HG12	1.81	0.62
1:C:3145:MET:HG3	1:C:3304:LEU:HD11	1.82	0.62
1:B:2352:LYS:HG2	1:B:2450:GLN:NE2	2.14	0.62
1:E:5312:PRO:HG3	1:E:5384:LYS:HD3	1.82	0.62
1:D:4261:VAL:HA	7:D:7290:HOH:O	2.00	0.61
1:B:2236:ALA:HA	1:B:2239:LEU:HD12	1.82	0.61
1:D:4143:GLY:CA	6:D:414:HTQ:H42	2.30	0.61
1:C:3095:GLN:O	1:C:3099:GLU:HG3	2.00	0.61
1:F:6538:LYS:HE2	7:F:8409:HOH:O	1.99	0.61
1:F:6538:LYS:HB3	1:F:6541:ASP:HB2	1.81	0.61
1:D:4487:GLU:HG3	1:D:4491:ARG:NH1	2.15	0.61
1:C:3083:TYR:CE2	1:C:3108:ILE:HD13	2.36	0.61
1:B:2215:VAL:N	1:B:2241:HIS:HD2	1.96	0.61
1:F:6417:PHE:O	1:F:6420:LEU:HB3	2.00	0.61
1:B:2079:ASN:HB2	7:B:8690:HOH:O	2.01	0.60

Continued on next page...

Continued from previous page...

Atom-1	Atom-2	Interatomic distance (Å)	Clash overlap (Å)
1:A:1370:GLU:HB3	1:A:1372:GLN:HE22	1.66	0.60
1:E:5140:HIS:HD2	1:E:5141:GLY:O	1.84	0.60
1:B:2428:VAL:HB	1:B:2429:PRO:HD3	1.83	0.60
1:B:2085:PRO:HD3	4:B:282:SIA:O1B	2.00	0.60
1:C:3260:ASP:OD2	1:C:3263:PRO:HD3	2.01	0.60
1:E:5296:GLU:HG2	7:E:8471:HOH:O	2.01	0.60
1:E:5538:LYS:HE2	7:E:8549:HOH:O	2.00	0.60
1:E:5366:TYR:HB3	1:E:5368:LEU:HD13	1.82	0.60
1:E:5264:LEU:HD22	1:E:5316:GLN:NE2	2.15	0.60
1:F:6252:THR:HG22	1:F:6254:VAL:HG12	1.82	0.60
1:E:5429:PRO:O	1:E:5433:VAL:HG23	2.01	0.60
1:A:1143:GLY:N	5:A:11:CL:CL	2.68	0.60
1:E:5403:TYR:O	1:E:5416:LEU:HD13	2.00	0.60
1:E:5089:GLN:OE1	1:E:5146:VAL:HB	2.02	0.60
1:E:5089:GLN:HB2	1:E:5146:VAL:HG12	1.83	0.60
1:A:1145:MET:HB2	1:A:1304:LEU:HD11	1.83	0.59
1:D:4237:LYS:HE3	1:D:4342:HIS:HB2	1.84	0.59
1:D:4105:LYS:HA	1:D:4482:LYS:HG2	1.84	0.59
1:C:3242:ARG:HD3	1:C:3503:PHE:O	2.02	0.59
1:F:6370:GLU:HB3	1:F:6372:GLN:HG2	1.84	0.59
1:C:3414:LYS:HG3	1:C:3415:ASP:N	2.16	0.59
1:F:6429:PRO:O	1:F:6433:VAL:HG23	2.02	0.59
1:A:1308:LEU:HD11	1:A:1367:PRO:HG3	1.83	0.59
1:D:4238:ASN:HB2	7:D:7053:HOH:O	2.01	0.59
1:C:3315:SER:HA	7:C:8252:HOH:O	2.03	0.59
1:B:2363:LEU:HD13	6:B:212:HTQ:C16	2.31	0.59
1:C:3349:GLY:HA3	1:C:3447:TYR:CE1	2.38	0.59
1:F:6342:HIS:HB2	7:F:7674:HOH:O	2.03	0.59
1:B:2363:LEU:HD22	6:B:212:HTQ:H181	1.85	0.58
1:B:2414:LYS:NZ	6:B:2[Y]:HTQ:H181	2.17	0.58
1:E:5363:LEU:HD13	6:E:515:HTQ:H161	1.85	0.58
1:F:6332:PRO:O	1:F:6336:GLN:HG3	2.02	0.58
1:A:1456:SER:HB3	1:A:1460:LYS:HD3	1.84	0.58
1:B:2420:LEU:HD13	1:B:2547:TRP:HZ2	1.68	0.58
1:E:5190:GLY:O	1:E:5194:GLN:HG3	2.03	0.58
1:D:4445:TYR:CE1	1:D:4519:GLU:HA	2.38	0.58
1:C:3400:THR:HG23	1:C:3404:LEU:HD12	1.85	0.58
1:E:5428:VAL:HB	1:E:5429:PRO:HD3	1.85	0.58
1:A:1297:THR:O	1:A:1301:MET:HG2	2.03	0.58
1:D:4199:ARG:HG2	1:D:4199:ARG:HH11	1.68	0.58
1:B:2255:LEU:HD11	6:B:212:HTQ:H91	1.85	0.58

Continued on next page...

Continued from previous page...

Atom-1	Atom-2	Interatomic distance (Å)	Clash overlap (Å)
1:C:3357:TRP:HB2	6:C:3[Z]:HTQ:H171	1.84	0.58
1:B:2145:MET:HB2	1:B:2304:LEU:HD11	1.86	0.58
1:A:1024:PRO:HG3	1:A:1037:PHE:CZ	2.39	0.58
1:A:1021:SER:HB2	7:A:8675:HOH:O	2.04	0.57
1:A:1097:LEU:HD13	6:A:111:HTQ:H161	1.87	0.57
1:C:3388:LEU:HD22	1:C:3425:MET:HE1	1.87	0.57
1:A:1386:TYR:N	1:A:1387:PRO:HD2	2.19	0.57
1:A:1023:PRO:CB	1:A:1034:LEU:HD21	2.34	0.57
1:F:6522:GLN:HB2	7:F:8312:HOH:O	2.04	0.57
1:A:1377:THR:O	1:A:1380:SER:HB3	2.05	0.57
1:B:2461:PRO:HG2	1:B:2464:VAL:HG23	1.87	0.57
1:A:1343:THR:HB	1:A:1442:ALA:HB2	1.86	0.57
1:A:1351:ASN:HB3	1:A:1466:GLY:O	2.05	0.57
1:C:3149:ALA:HB2	1:C:3169:GLN:HG3	1.86	0.57
1:A:1215:VAL:N	1:A:1241:HIS:HD2	1.96	0.57
1:F:6339:ARG:HD2	1:F:6440:ALA:CA	2.35	0.57
1:E:5023:PRO:HB2	1:E:5034:LEU:HD21	1.87	0.57
1:F:6176:GLY:HA2	1:F:6189:TRP:HB2	1.87	0.57
1:B:2547:TRP:CZ3	1:B:2550:LEU:HD23	2.40	0.57
1:D:4251:LEU:HD22	1:D:4333:GLU:OE2	2.05	0.57
1:F:6268:ILE:HD11	1:F:6319:LEU:HD21	1.86	0.56
1:F:6255:LEU:HD23	1:F:6318:LEU:HD11	1.87	0.56
1:C:3104:ARG:HD3	7:C:8237:HOH:O	2.04	0.56
1:A:1474:SER:HB3	1:A:1496:VAL:HG21	1.87	0.56
1:F:6357:TRP:HA	6:F:6[Y]:HTQ:H181	1.88	0.56
1:B:2353:GLN:NE2	1:B:2465:ILE:H	2.03	0.56
1:F:6156:ALA:HB3	7:F:7194:HOH:O	2.04	0.56
1:E:5332:PRO:O	1:E:5336:GLN:HG3	2.06	0.56
1:C:3045:GLN:NE2	1:C:3046:PRO:HD2	2.20	0.56
1:F:6386:TYR:N	1:F:6387:PRO:HD2	2.20	0.56
1:F:6258:LYS:HD3	7:F:8619:HOH:O	2.05	0.56
1:B:2220:GLU:HG3	7:B:7802:HOH:O	2.06	0.56
1:C:3414:LYS:NZ	6:C:3[Z]:HTQ:H161	2.20	0.56
1:E:5538:LYS:HD2	1:E:5541:ASP:OD2	2.05	0.56
1:B:2461:PRO:HG2	1:B:2464:VAL:CG2	2.35	0.56
1:E:5149:ALA:HB2	1:E:5169:GLN:HG3	1.88	0.56
1:E:5303:PHE:HD2	1:E:5317:PRO:O	1.88	0.56
1:B:2254:VAL:HG22	1:B:2318:LEU:HD12	1.88	0.56
1:E:5202:GLN:NE2	1:E:5215:VAL:HG21	2.19	0.56
1:A:1370:GLU:HB3	1:A:1372:GLN:NE2	2.21	0.56
1:D:4199:ARG:HG2	1:D:4199:ARG:NH1	2.19	0.56

Continued on next page...

Continued from previous page...

Atom-1	Atom-2	Interatomic distance (Å)	Clash overlap (Å)
1:D:4275:LYS:HG3	7:F:8666:HOH:O	2.05	0.56
1:A:1135:VAL:HG21	1:A:1205:ILE:HG12	1.88	0.56
1:B:2246:GLU:HG2	1:B:2447:TYR:OH	2.06	0.56
1:F:6455:PHE:CD2	1:F:6482:LYS:HD3	2.40	0.56
1:C:3338:GLU:OE1	1:C:3340:ASN:HB3	2.05	0.56
2:E:579:NAG:HO4	2:E:580:NAG:H5	1.69	0.55
1:D:4338:GLU:CG	1:D:4341:PHE:HB2	2.36	0.55
1:E:5342:HIS:HD2	7:E:8426:HOH:O	1.89	0.55
1:B:2074:TRP:CD2	1:B:2078:LYS:HE2	2.41	0.55
1:A:1363:LEU:HD13	6:A:111:HTQ:C16	2.37	0.55
1:F:6315:SER:HB2	7:F:8469:HOH:O	2.06	0.55
1:D:4089:GLN:HB2	1:D:4146:VAL:HG12	1.88	0.55
1:D:4215:VAL:H	1:D:4241:HIS:CD2	2.17	0.55
1:E:5262:LYS:HB3	1:E:5263:PRO:HD3	1.88	0.55
1:E:5258:LYS:HD2	1:E:5258:LYS:O	2.06	0.55
1:A:1403:TYR:O	1:A:1416:LEU:HD13	2.06	0.55
1:A:1043:PHE:HA	7:A:7064:HOH:O	2.07	0.55
1:F:6255:LEU:HD11	6:F:616:HTQ:C9	2.36	0.55
1:E:5140:HIS:HE1	7:E:7090:HOH:O	1.90	0.55
1:D:4105:LYS:HG2	7:D:7281:HOH:O	2.06	0.55
1:A:1403:TYR:CD1	1:A:1420:LEU:HD23	2.42	0.55
1:A:1368:LEU:O	6:A:1[Y]:HTQ:H22	2.06	0.55
1:D:4459:MET:HE2	7:D:8676:HOH:O	2.07	0.55
1:B:2024:PRO:HG3	1:B:2037:PHE:CZ	2.42	0.55
1:D:4461:PRO:HG2	1:D:4464:VAL:HG23	1.89	0.55
1:F:6414:LYS:HG3	1:F:6415:ASP:N	2.21	0.55
1:D:4236:ALA:HA	1:D:4239:LEU:HD12	1.89	0.55
1:F:6242:ARG:HH11	1:F:6242:ARG:HG2	1.71	0.55
1:F:6431:VAL:HG21	1:F:6540:LYS:HB2	1.88	0.55
1:D:4262:LYS:O	1:D:4266:GLU:HG3	2.07	0.55
1:E:5131:ASN:HB2	7:E:7188:HOH:O	2.06	0.55
1:E:5357:TRP:HA	6:E:5[Y]:HTQ:H171	1.88	0.55
1:C:3262:LYS:HB3	1:C:3263:PRO:HD3	1.89	0.55
1:D:4103:ASN:ND2	1:D:4476:PHE:HB3	2.22	0.55
1:D:4292:GLU:CD	1:D:4292:GLU:H	2.10	0.55
1:E:5461:PRO:HG2	1:E:5464:VAL:CG2	2.37	0.55
1:D:4140:HIS:HD2	1:D:4141:GLY:O	1.90	0.54
1:C:3145:MET:HG3	1:C:3318:LEU:HD21	1.89	0.54
1:C:3386:TYR:N	1:C:3387:PRO:HD2	2.22	0.54
1:D:4297:THR:O	1:D:4301:MET:HG2	2.07	0.54
1:E:5292:GLU:CD	1:E:5292:GLU:H	2.09	0.54

Continued on next page...

Continued from previous page...

Atom-1	Atom-2	Interatomic distance (Å)	Clash overlap (Å)
1:A:1199:ARG:HH11	1:A:1199:ARG:HG2	1.71	0.54
1:F:6403:TYR:O	1:F:6416:LEU:HD13	2.08	0.54
1:C:3348:VAL:O	1:C:3446:MET:HA	2.07	0.54
1:B:2047:VAL:HG21	1:B:2155:LEU:HD23	1.89	0.54
1:B:2436:ASN:HB3	7:B:7545:HOH:O	2.06	0.54
1:A:1343:THR:HA	7:A:7195:HOH:O	2.07	0.54
1:A:1428:VAL:HB	1:A:1429:PRO:HD3	1.89	0.54
1:A:1138:TRP:HH2	1:A:1220:GLU:HB2	1.71	0.54
1:F:6241:HIS:O	1:F:6242:ARG:HG2	2.08	0.54
1:F:6304:LEU:HD23	6:F:616:HTQ:C17	2.38	0.54
1:A:1461:PRO:HG2	1:A:1464:VAL:HG23	1.90	0.54
1:A:1369:SER:O	6:A:1[Z]:HTQ:H91	2.08	0.54
1:B:2486:SER:O	1:B:2490:ILE:HG13	2.08	0.54
1:A:1025:VAL:HG22	1:A:1034:LEU:HD23	1.90	0.53
1:D:4254:VAL:HG11	6:D:414:HTQ:H72	1.90	0.53
1:C:3268:ILE:HG12	1:C:3301:MET:CE	2.37	0.53
1:E:5388:LEU:HD22	1:E:5425:MET:CE	2.38	0.53
1:D:4461:PRO:HG2	1:D:4464:VAL:CG2	2.38	0.53
1:E:5268:ILE:CD1	1:E:5319:LEU:HD21	2.37	0.53
1:B:2264:LEU:HD21	1:B:2319:LEU:CD2	2.38	0.53
1:C:3437:HIS:HE1	7:C:7026:HOH:O	1.90	0.53
1:E:5255:LEU:HD11	6:E:515:HTQ:H91	1.90	0.53
1:A:1221:SER:CB	5:A:11:CL:CL	2.93	0.53
1:B:2403:TYR:O	1:B:2416:LEU:HD13	2.07	0.53
1:E:5220:GLU:O	1:E:5221:SER:HB2	2.08	0.53
1:B:2220:GLU:HA	1:B:2246:GLU:O	2.09	0.53
1:F:6284:HIS:O	1:F:6288:GLN:HG2	2.08	0.53
1:F:6456:SER:HB3	1:F:6460:LYS:HD3	1.91	0.53
1:B:2242:ARG:HH11	1:B:2242:ARG:HG3	1.74	0.53
1:E:5491:ARG:HH11	1:E:5491:ARG:HG2	1.74	0.53
1:B:2081:THR:OG1	3:B:279:NDG:H8C1	2.09	0.53
1:A:1254:VAL:HG12	7:A:7530:HOH:O	2.09	0.53
1:B:2024:PRO:HG3	1:B:2037:PHE:CE1	2.43	0.53
1:D:4361:MET:HE1	1:D:4363:LEU:HG	1.91	0.53
1:B:2452:ARG:NE	1:B:2462:LYS:HA	2.23	0.53
1:A:1221:SER:HA	1:A:1247:SER:O	2.09	0.53
1:C:3429:PRO:O	1:C:3433:VAL:HG23	2.09	0.53
1:D:4227:VAL:O	1:D:4231:VAL:HG23	2.09	0.53
1:C:3138:TRP:CZ3	1:C:3219:GLY:HA2	2.44	0.53
1:E:5402:LYS:NZ	1:E:5546:PHE:CD1	2.75	0.53
1:F:6090:ASP:HB3	1:F:6093:ALA:HB3	1.91	0.53

Continued on next page...

Continued from previous page...

Atom-1	Atom-2	Interatomic distance (Å)	Clash overlap (Å)
1:A:1132:ARG:HG2	7:A:8191:HOH:O	2.09	0.52
1:A:1421:ILE:HG22	1:A:1425:MET:HE3	1.91	0.52
1:F:6040:LEU:HG	7:F:8070:HOH:O	2.09	0.52
1:C:3023:PRO:HB2	1:C:3034:LEU:HD21	1.91	0.52
1:F:6119:LEU:O	1:F:6119:LEU:HD12	2.09	0.52
1:D:4553:LYS:HB3	7:D:7920:HOH:O	2.08	0.52
1:D:4486:SER:O	1:D:4490:ILE:HG13	2.08	0.52
1:E:5030:HIS:HD2	7:E:7229:HOH:O	1.92	0.52
1:B:2372:GLN:O	1:B:2373:LEU:HB2	2.08	0.52
1:A:1102:THR:OG1	1:A:1104:ARG:HG2	2.08	0.52
1:C:3456:SER:HA	7:C:7789:HOH:O	2.10	0.52
1:C:3398:GLU:HG3	7:C:7478:HOH:O	2.09	0.52
1:C:3139:ILE:HG12	1:C:3168:ILE:HD11	1.91	0.52
1:C:3464:VAL:HG22	6:C:3[Z]:HTQ:H191	1.92	0.52
1:F:6351:ASN:ND2	1:F:6449:PHE:HB3	2.25	0.52
1:B:2292:GLU:HG3	7:C:8454:HOH:O	2.10	0.52
1:E:5354:GLU:O	1:E:5468:HIS:HB2	2.09	0.52
1:A:1366:TYR:O	6:A:1[Z]:HTQ:H171	2.09	0.52
1:D:4383:TRP:O	1:D:4386:TYR:HB2	2.10	0.52
1:F:6030:HIS:HD2	7:F:8639:HOH:O	1.91	0.52
1:B:2104:ARG:CZ	1:B:2153:ASP:HB2	2.39	0.52
1:B:2389:VAL:HB	1:B:2424:VAL:HG11	1.90	0.52
1:D:4262:LYS:HE3	1:D:4279:SER:OG	2.10	0.52
1:B:2351:ASN:ND2	1:B:2449:PHE:HB3	2.24	0.52
1:A:1368:LEU:HD12	6:A:1[Y]:HTQ:H151	1.92	0.52
1:B:2386:TYR:N	1:B:2387:PRO:HD2	2.25	0.52
1:B:2084:PRO:CB	4:B:282:SIA:O1A	2.58	0.52
1:F:6220:GLU:HA	1:F:6246:GLU:O	2.10	0.52
1:D:4339:ARG:HG3	1:D:4440:ALA:HA	1.91	0.52
1:B:2052:GLY:HA3	4:B:282:SIA:O1A	2.09	0.52
1:D:4491:ARG:HH11	1:D:4491:ARG:HG3	1.75	0.52
1:B:2261:VAL:HA	7:B:7763:HOH:O	2.10	0.52
1:A:1292:GLU:H	1:A:1292:GLU:CD	2.13	0.52
1:A:1402:LYS:HG2	1:A:1546:PHE:CE1	2.45	0.52
1:A:1241:HIS:O	1:A:1242:ARG:HG2	2.10	0.52
1:E:5358:LEU:HG	1:E:5363:LEU:HD12	1.92	0.52
1:F:6135:VAL:HB	1:F:6215:VAL:HG22	1.92	0.51
1:B:2231:VAL:HA	1:B:2342:HIS:HD2	1.73	0.51
1:F:6480:PHE:HB3	7:F:8202:HOH:O	2.10	0.51
1:E:5382:LEU:HD11	1:E:5391:ILE:HD12	1.92	0.51
1:C:3382:LEU:HD23	1:C:3396:ILE:HG23	1.90	0.51

Continued on next page...

Continued from previous page...

Atom-1	Atom-2	Interatomic distance (Å)	Clash overlap (Å)
1:C:3334:GLU:HG2	7:C:8402:HOH:O	2.10	0.51
1:B:2227:VAL:O	1:B:2231:VAL:HG23	2.10	0.51
1:E:5304:LEU:HD13	6:E:515:HTQ:C19	2.41	0.51
1:B:2352:LYS:HE2	1:B:2450:GLN:NE2	2.24	0.51
1:D:4332:PRO:O	1:D:4336:GLN:HG2	2.11	0.51
1:D:4201:VAL:HG13	1:D:4205:ILE:HB	1.92	0.51
1:D:4369:SER:O	6:D:4[Z]:HTQ:H51	2.10	0.51
1:C:3512:GLU:HB3	7:C:7617:HOH:O	2.10	0.51
1:F:6358:LEU:HD23	1:F:6468:HIS:HD2	1.75	0.51
1:F:6478:ALA:N	1:F:6479:PRO:CD	2.74	0.51
1:A:1308:LEU:HD11	1:A:1367:PRO:CG	2.40	0.51
1:E:5242:ARG:HH11	1:E:5242:ARG:HG3	1.74	0.51
1:B:2040:LEU:HD22	1:B:2156:ALA:HA	1.92	0.51
1:C:3364:MET:CE	1:C:3388:LEU:HD11	2.41	0.51
1:A:1079:ASN:CB	4:A:182:SIA:H113	2.40	0.51
1:D:4386:TYR:N	1:D:4387:PRO:HD2	2.26	0.51
1:F:6396:ILE:HB	1:F:6397:PRO:HD3	1.91	0.51
1:C:3407:THR:HG21	7:C:7543:HOH:O	2.09	0.51
1:D:4024:PRO:HG3	1:D:4037:PHE:CZ	2.45	0.51
1:C:3102:THR:OG1	1:C:3104:ARG:HG2	2.11	0.51
1:B:2534:GLN:HG2	7:B:7715:HOH:O	2.11	0.51
1:F:6237:LYS:HG3	1:F:6238:ASN:ND2	2.26	0.51
1:A:1385:SER:O	1:A:1389:VAL:HG22	2.11	0.51
1:D:4349:GLY:HA3	1:D:4447:TYR:CE1	2.46	0.51
3:B:279:NDG:H4	7:B:8352:HOH:O	2.11	0.51
1:B:2025:VAL:HG22	1:B:2034:LEU:HD23	1.92	0.51
1:B:2268:ILE:HD11	1:B:2319:LEU:HD21	1.92	0.51
1:B:2352:LYS:HE2	1:B:2450:GLN:HE22	1.75	0.51
1:B:2541:ASP:HB3	7:B:8152:HOH:O	2.11	0.51
1:D:4206:ALA:HB3	7:D:7552:HOH:O	2.10	0.51
1:D:4304:LEU:HD13	6:D:414:HTQ:C17	2.40	0.51
1:B:2341:PHE:HA	7:B:7548:HOH:O	2.10	0.51
1:F:6152:TYR:N	1:F:6152:TYR:CD1	2.79	0.51
1:A:1254:VAL:HG21	1:A:1388:LEU:HD23	1.93	0.50
1:A:1313:ARG:HA	1:A:1386:TYR:CD2	2.46	0.50
1:F:6262:LYS:HE2	1:F:6282:MET:HE1	1.92	0.50
1:C:3522:GLN:HB2	7:C:7554:HOH:O	2.12	0.50
1:F:6363:LEU:HB3	6:F:616:HTQ:C18	2.41	0.50
1:F:6368:LEU:HB2	6:F:6[Z]:HTQ:H151	1.93	0.50
1:D:4237:LYS:HG3	1:D:4342:HIS:ND1	2.25	0.50
3:D:479:NDG:H3	7:D:8543:HOH:O	2.11	0.50

Continued on next page...

Continued from previous page...

Atom-1	Atom-2	Interatomic distance (Å)	Clash overlap (Å)
1:B:2119:LEU:HD12	1:B:2119:LEU:O	2.11	0.50
1:C:3364:MET:SD	1:C:3388:LEU:HD11	2.52	0.50
1:C:3268:ILE:HD11	1:C:3319:LEU:HD21	1.93	0.50
1:C:3355:PHE:CD1	1:C:3360:PRO:HG3	2.46	0.50
1:B:2084:PRO:CA	4:B:282:SIA:O1A	2.60	0.50
1:C:3339:ARG:HB3	7:C:7469:HOH:O	2.10	0.50
1:E:5241:HIS:HA	1:E:5344:VAL:HG11	1.93	0.50
1:C:3140:HIS:HD2	1:C:3141:GLY:O	1.95	0.50
1:B:2338:GLU:HB2	1:B:2340:ASN:HB3	1.91	0.50
1:B:2357:TRP:CE3	1:B:2460:LYS:HB2	2.47	0.50
1:E:5478:ALA:HB3	1:E:5479:PRO:HD3	1.92	0.50
1:B:2138:TRP:CZ3	1:B:2219:GLY:HA2	2.46	0.50
1:F:6357:TRP:HA	6:F:6[Y]:HTQ:C18	2.41	0.50
1:E:5394:GLU:O	1:E:5397:PRO:HD2	2.10	0.50
1:B:2032:LYS:HG3	7:B:7916:HOH:O	2.10	0.50
1:F:6306:LEU:HD22	1:F:6366:TYR:CE1	2.46	0.50
1:C:3375:GLN:O	1:C:3379:MET:HG3	2.12	0.50
1:C:3304:LEU:HG	6:C:313:HTQ:C19	2.42	0.50
6:B:2[Z]:HTQ:H51	7:B:8669:HOH:O	2.12	0.50
1:A:1063:LEU:HD21	1:A:1069:GLN:NE2	2.27	0.50
1:D:4225:GLU:O	1:D:4229:VAL:HG23	2.11	0.50
1:E:5099:GLU:HG3	1:E:5107:ASN:OD1	2.12	0.50
1:C:3396:ILE:HB	1:C:3397:PRO:HD3	1.94	0.50
1:B:2338:GLU:O	1:B:2339:ARG:C	2.49	0.50
1:B:2437:HIS:HD2	1:B:2444:THR:OG1	1.95	0.50
1:F:6036:LYS:NZ	7:F:7752:HOH:O	2.44	0.50
1:C:3376:LYS:HE3	7:C:8551:HOH:O	2.11	0.50
1:C:3242:ARG:HG2	1:C:3242:ARG:NH1	2.25	0.49
1:E:5364:MET:SD	1:E:5388:LEU:HD11	2.52	0.49
1:B:2284:HIS:O	1:B:2288:GLN:HG2	2.12	0.49
1:C:3456:SER:HB3	1:C:3460:LYS:HD3	1.94	0.49
1:E:5220:GLU:HA	1:E:5246:GLU:O	2.12	0.49
1:F:6079:ASN:CB	3:F:679:NDG:H8C1	2.42	0.49
1:A:1358:LEU:HG	1:A:1363:LEU:HD11	1.94	0.49
1:A:1143:GLY:O	1:A:1318:LEU:HD22	2.13	0.49
1:D:4547:TRP:CZ3	1:D:4550:LEU:HD23	2.46	0.49
1:C:3528:GLN:O	1:C:3533:THR:HA	2.13	0.49
1:C:3383:TRP:HB2	7:C:7716:HOH:O	2.13	0.49
1:D:4308:LEU:HD11	1:D:4367:PRO:HG3	1.95	0.49
1:D:4404:LEU:C	1:D:4406:GLY:H	2.16	0.49
1:B:2080:ALA:HA	4:B:282:SIA:O4	2.12	0.49

Continued on next page...

Continued from previous page...

Atom-1	Atom-2	Interatomic distance (Å)	Clash overlap (Å)
1:B:2023:PRO:CB	1:B:2034:LEU:HD21	2.39	0.49
1:D:4263:PRO:HD2	7:D:7290:HOH:O	2.12	0.49
1:B:2145:MET:CB	1:B:2304:LEU:HD11	2.43	0.49
1:E:5254:VAL:HG11	6:E:515:HTQ:H61	1.94	0.49
1:E:5356:GLY:O	6:E:5[Y]:HTQ:H171	2.13	0.49
1:F:6404:LEU:O	1:F:6413:LYS:HE2	2.11	0.49
1:C:3220:GLU:HG2	1:C:3472:LEU:HD21	1.94	0.49
1:C:3461:PRO:HB2	1:C:3464:VAL:HG23	1.95	0.49
1:E:5145:MET:HG2	1:E:5318:LEU:HD21	1.95	0.49
1:E:5386:TYR:N	1:E:5387:PRO:CD	2.75	0.49
1:F:6079:ASN:O	4:F:682:SIA:H6	2.12	0.49
1:C:3352:LYS:HG2	7:C:8697:HOH:O	2.13	0.49
1:B:2143:GLY:O	1:B:2144:LEU:HB2	2.12	0.49
1:E:5237:LYS:NZ	1:E:5342:HIS:HB2	2.28	0.49
1:E:5296:GLU:HG3	7:E:7989:HOH:O	2.13	0.49
1:C:3375:GLN:NE2	1:C:3400:THR:HG22	2.28	0.49
1:F:6231:VAL:HG13	7:F:7815:HOH:O	2.12	0.49
1:E:5348:VAL:O	1:E:5446:MET:HA	2.12	0.49
1:D:4437:HIS:HD2	1:D:4444:THR:OG1	1.96	0.49
4:B:282:SIA:H92	1:C:3279:SER:H	1.78	0.48
1:F:6368:LEU:HB2	6:F:6[Y]:HTQ:H151	1.95	0.48
1:B:2025:VAL:CG2	1:B:2034:LEU:HD23	2.43	0.48
1:A:1095:GLN:O	1:A:1099:GLU:HG3	2.13	0.48
1:D:4040:LEU:HD22	1:D:4156:ALA:HA	1.94	0.48
1:E:5241:HIS:C	1:E:5242:ARG:HD2	2.34	0.48
1:A:1372:GLN:N	1:A:1372:GLN:NE2	2.62	0.48
1:B:2292:GLU:H	1:B:2292:GLU:CD	2.16	0.48
1:D:4339:ARG:HH21	1:D:4439:ASP:HB2	1.78	0.48
1:E:5271:THR:CG2	1:E:5297:THR:HG23	2.43	0.48
1:A:1403:TYR:CG	1:A:1420:LEU:HD23	2.48	0.48
1:E:5045:GLN:NE2	1:E:5046:PRO:HD2	2.28	0.48
1:A:1097:LEU:HD13	6:A:111:HTQ:C16	2.42	0.48
1:F:6254:VAL:HG11	6:F:616:HTQ:H61	1.96	0.48
1:F:6264:LEU:HD11	1:F:6316:GLN:HG2	1.94	0.48
1:A:1373:LEU:HD11	7:A:8101:HOH:O	2.13	0.48
1:F:6140:HIS:HD2	1:F:6141:GLY:O	1.97	0.48
1:A:1186:ARG:HB3	1:A:1324:ASP:HB2	1.95	0.48
1:C:3308:LEU:HD11	1:C:3367:PRO:HG3	1.95	0.48
1:E:5552:ALA:HB3	7:E:8130:HOH:O	2.13	0.48
1:D:4105:LYS:HG3	1:D:4106:GLU:N	2.28	0.48
1:F:6119:LEU:C	1:F:6119:LEU:HD12	2.34	0.48

Continued on next page...

Continued from previous page...

Atom-1	Atom-2	Interatomic distance (Å)	Clash overlap (Å)
1:A:1348:VAL:O	1:A:1446:MET:HA	2.14	0.48
1:B:2478:ALA:HB3	1:B:2479:PRO:HD3	1.96	0.48
1:E:5074:TRP:CD2	1:E:5078:LYS:HE2	2.48	0.48
1:B:2048:ALA:HB3	1:B:2123:THR:CG2	2.44	0.48
1:E:5351:ASN:ND2	1:E:5449:PHE:HB3	2.28	0.48
1:B:2366:TYR:HB3	1:B:2368:LEU:CD1	2.41	0.48
1:D:4355:PHE:CD1	1:D:4360:PRO:HG3	2.49	0.48
1:A:1420:LEU:HD22	1:A:1547:TRP:HZ2	1.78	0.48
1:F:6414:LYS:O	1:F:6418:LEU:HG	2.14	0.48
1:D:4369:SER:HA	6:D:4[Y]:HTQ:H21	1.95	0.48
1:E:5026:VAL:CG1	1:E:5207:SER:HB3	2.44	0.48
1:E:5048:ALA:HB3	1:E:5123:THR:HG23	1.95	0.48
1:E:5138:TRP:CZ3	1:E:5219:GLY:HA2	2.49	0.48
1:B:2103:ASN:HB3	7:B:8481:HOH:O	2.14	0.48
1:B:2140:HIS:CD2	1:B:2147:GLY:HA3	2.49	0.48
1:B:2425:MET:CE	6:B:212:HTQ:H72	2.44	0.48
1:A:1304:LEU:CD1	6:A:111:HTQ:H171	2.36	0.48
1:F:6146:VAL:HG21	6:F:616:HTQ:H171	1.95	0.48
1:C:3254:VAL:HG13	1:C:3255:LEU:HG	1.95	0.48
1:B:2044:ALA:O	1:F:6491:ARG:HD2	2.13	0.48
1:A:1435:ARG:O	1:A:1438:ARG:HB3	2.14	0.48
1:B:2369:SER:O	6:B:2[Y]:HTQ:H51	2.14	0.48
1:F:6351:ASN:HB3	1:F:6466:GLY:O	2.13	0.48
1:D:4382:LEU:HD23	1:D:4396:ILE:HG23	1.95	0.48
1:A:1359:ILE:HB	1:A:1360:PRO:HD3	1.96	0.48
1:B:2023:PRO:HA	1:B:2024:PRO:HD3	1.83	0.48
1:F:6225:GLU:O	1:F:6229:VAL:HG23	2.13	0.48
1:D:4452:ARG:HG2	7:D:8033:HOH:O	2.14	0.48
1:F:6237:LYS:HG2	7:F:8213:HOH:O	2.14	0.47
1:B:2334:GLU:O	1:B:2338:GLU:HG3	2.14	0.47
1:B:2368:LEU:N	1:B:2368:LEU:HD12	2.29	0.47
1:A:1222:ALA:N	5:A:11:CL:CL	2.83	0.47
1:A:1372:GLN:H	1:A:1372:GLN:NE2	2.12	0.47
1:A:1138:TRP:CH2	1:A:1220:GLU:HB2	2.49	0.47
1:A:1124:PRO:HD3	1:A:1158:ALA:HB1	1.96	0.47
1:A:1260:ASP:OD2	1:A:1263:PRO:HD3	2.14	0.47
1:B:2022:SER:HB3	7:B:8445:HOH:O	2.14	0.47
1:C:3218:PHE:CB	1:C:3244:ILE:HB	2.44	0.47
1:E:5542:LYS:HB2	7:E:8311:HOH:O	2.14	0.47
1:B:2498:LYS:HG2	1:B:2514:LEU:HD11	1.95	0.47
1:E:5221:SER:O	1:E:5224:GLY:N	2.47	0.47

Continued on next page...

Continued from previous page...

Atom-1	Atom-2	Interatomic distance (Å)	Clash overlap (Å)
1:C:3257:LYS:HB3	7:C:7331:HOH:O	2.13	0.47
1:D:4354:GLU:HB2	1:D:4422:ALA:HB1	1.96	0.47
1:C:3425:MET:CE	6:C:313:HTQ:H72	2.45	0.47
1:D:4242:ARG:CG	1:D:4242:ARG:NH1	2.77	0.47
1:E:5030:HIS:HB3	1:E:5073:PRO:HA	1.96	0.47
1:A:1089:GLN:OE1	1:A:1146:VAL:HB	2.14	0.47
1:E:5523:LYS:HD2	7:E:8003:HOH:O	2.13	0.47
1:B:2152:TYR:CD1	1:B:2152:TYR:N	2.82	0.47
1:A:1242:ARG:NH1	1:A:1242:ARG:HG2	2.29	0.47
1:F:6359:ILE:HB	1:F:6360:PRO:HD3	1.97	0.47
1:E:5383:TRP:CH2	1:E:5393:LYS:HB2	2.50	0.47
1:F:6349:GLY:HA3	1:F:6447:TYR:CE1	2.48	0.47
1:E:5100:LEU:HD13	1:E:5358:LEU:HD11	1.96	0.47
1:A:1478:ALA:N	1:A:1479:PRO:CD	2.77	0.47
1:E:5338:GLU:C	1:E:5340:ASN:N	2.67	0.47
1:B:2348:VAL:O	1:B:2446:MET:HA	2.15	0.47
1:C:3236:ALA:O	1:C:3238:ASN:N	2.47	0.47
1:E:5431:VAL:HG21	1:E:5539:LEU:O	2.15	0.47
1:A:1034:LEU:C	1:A:1034:LEU:HD13	2.35	0.47
1:D:4336:GLN:O	1:D:4339:ARG:NH1	2.48	0.47
1:D:4038:VAL:HG21	1:D:4049:ILE:HD12	1.97	0.47
1:A:1199:ARG:NH1	1:A:1239:LEU:HD21	2.30	0.47
1:D:4306:LEU:HD23	1:D:4308:LEU:HD21	1.96	0.47
1:E:5267:GLN:HB2	7:E:8396:HOH:O	2.15	0.47
1:D:4478:ALA:N	1:D:4479:PRO:CD	2.78	0.47
1:D:4025:VAL:HG22	1:D:4034:LEU:HD23	1.96	0.47
1:B:2376:LYS:HA	1:B:2379:MET:HE2	1.97	0.47
1:F:6385:SER:O	1:F:6389:VAL:HG22	2.15	0.47
1:C:3371:GLY:HA2	6:C:3[Y]:HTQ:O12	2.15	0.47
1:E:5425:MET:CE	6:E:515:HTQ:H72	2.45	0.47
1:A:1220:GLU:HG3	1:A:1472:LEU:HD21	1.97	0.47
1:D:4418:LEU:HD11	6:D:4[Z]:HTQ:C18	2.45	0.47
1:E:5297:THR:O	1:E:5301:MET:HG2	2.15	0.47
1:C:3538:LYS:HB3	1:C:3541:ASP:HB2	1.96	0.47
1:B:2139:ILE:O	1:B:2223:GLY:HA3	2.15	0.47
1:E:5271:THR:HG22	1:E:5297:THR:HG23	1.97	0.46
1:A:1349:GLY:HA3	1:A:1447:TYR:CZ	2.49	0.46
1:C:3380:SER:O	1:C:3384:LYS:HG2	2.15	0.46
1:F:6292:GLU:H	1:F:6292:GLU:CD	2.18	0.46
1:A:1355:PHE:CD1	1:A:1360:PRO:HG3	2.49	0.46
1:A:1461:PRO:HG2	1:A:1464:VAL:CG2	2.44	0.46

Continued on next page...

Continued from previous page...

Atom-1	Atom-2	Interatomic distance (Å)	Clash overlap (Å)
1:C:3308:LEU:HD21	1:C:3367:PRO:HG2	1.96	0.46
1:D:4278:THR:OG1	1:D:4281:VAL:HG23	2.16	0.46
1:A:1455:PHE:HB3	1:A:1482:LYS:NZ	2.30	0.46
1:F:6186:ARG:HB3	1:F:6324:ASP:HB2	1.96	0.46
1:A:1426:PHE:HZ	6:A:111:HTQ:H11	1.81	0.46
1:A:1403:TYR:CE2	1:A:1420:LEU:HA	2.50	0.46
1:A:1176:GLY:HA2	1:A:1189:TRP:HB2	1.97	0.46
1:A:1551:PHE:C	1:A:1553:LYS:H	2.18	0.46
1:A:1119:LEU:O	1:A:1119:LEU:HD12	2.14	0.46
1:F:6143:GLY:O	1:F:6318:LEU:HD13	2.16	0.46
1:F:6357:TRP:O	1:F:6360:PRO:HD2	2.15	0.46
1:C:3254:VAL:HG13	1:C:3255:LEU:N	2.30	0.46
1:F:6246:GLU:HG2	1:F:6447:TYR:OH	2.15	0.46
1:F:6332:PRO:HD2	1:F:6333:GLU:OE1	2.16	0.46
1:F:6358:LEU:HD23	1:F:6468:HIS:CD2	2.51	0.46
1:E:5492:LEU:O	1:E:5496:VAL:HG23	2.16	0.46
1:C:3217:ILE:HG13	1:C:3217:ILE:O	2.14	0.46
1:C:3161:GLU:O	1:C:3163:VAL:HG13	2.14	0.46
1:E:5393:LYS:HA	1:E:5396:ILE:HG12	1.97	0.46
1:C:3242:ARG:HD2	1:C:3504:ALA:HA	1.97	0.46
1:D:4089:GLN:OE1	1:D:4146:VAL:HB	2.16	0.46
1:C:3220:GLU:HA	1:C:3246:GLU:O	2.15	0.46
1:A:1262:LYS:O	1:A:1266:GLU:HG3	2.16	0.46
1:B:2329:LEU:HD21	7:B:7603:HOH:O	2.15	0.46
1:A:1254:VAL:CG1	6:A:111:HTQ:H61	2.44	0.46
1:A:1140:HIS:CD2	1:A:1141:GLY:O	2.67	0.46
1:A:1409:ASP:O	1:A:1413:LYS:HG3	2.16	0.46
1:C:3161:GLU:HB3	1:C:3501:ALA:CB	2.45	0.46
1:A:1024:PRO:HG3	1:A:1037:PHE:CE1	2.51	0.46
1:A:1036:LYS:HE3	1:A:1038:VAL:CG2	2.46	0.46
1:D:4540:LYS:HA	1:D:4543:GLU:OE2	2.16	0.46
1:E:5237:LYS:HZ3	1:E:5342:HIS:H	1.63	0.46
1:E:5363:LEU:HD13	6:E:515:HTQ:C16	2.45	0.46
1:B:2357:TRP:HB3	1:B:2467:ASP:OD2	2.15	0.46
1:A:1429:PRO:O	1:A:1433:VAL:HG23	2.16	0.46
1:E:5402:LYS:HD3	1:E:5402:LYS:O	2.16	0.46
1:B:2104:ARG:NH1	1:B:2153:ASP:HB2	2.31	0.46
1:C:3140:HIS:HE1	7:C:7059:HOH:O	1.99	0.46
1:C:3498:LYS:HE2	7:C:7202:HOH:O	2.15	0.46
1:B:2396:ILE:HB	1:B:2397:PRO:HD3	1.98	0.46
1:F:6264:LEU:HD22	1:F:6268:ILE:HD11	1.97	0.46

Continued on next page...

Continued from previous page...

Atom-1	Atom-2	Interatomic distance (Å)	Clash overlap (Å)
1:B:2264:LEU:HD22	1:B:2316:GLN:HE21	1.81	0.46
1:C:3477:GLY:HA2	1:C:3493:SER:OG	2.16	0.46
1:D:4139:ILE:O	1:D:4223:GLY:HA3	2.16	0.46
1:F:6366:TYR:O	6:F:6[Z]:HTQ:H171	2.16	0.46
1:A:1025:VAL:CG2	1:A:1034:LEU:HD23	2.46	0.46
1:E:5383:TRP:CZ3	1:E:5393:LYS:HB2	2.51	0.46
1:B:2532:ASN:ND2	1:B:2534:GLN:NE2	2.64	0.46
1:B:2455:PHE:CD2	1:B:2482:LYS:HD3	2.51	0.46
1:E:5461:PRO:HB3	7:E:8667:HOH:O	2.16	0.45
1:B:2478:ALA:N	1:B:2479:PRO:CD	2.79	0.45
1:A:1349:GLY:HA3	1:A:1447:TYR:CE1	2.51	0.45
1:F:6082:SER:OG	4:F:682:SIA:N5	2.49	0.45
1:B:2233:SER:O	1:B:2342:HIS:NE2	2.48	0.45
1:A:1551:PHE:C	1:A:1553:LYS:N	2.69	0.45
1:D:4190:GLY:O	1:D:4194:GLN:HG3	2.17	0.45
1:B:2120:ASN:HB2	1:B:2167:THR:OG1	2.16	0.45
1:C:3251:LEU:CD2	1:C:3333:GLU:HG3	2.46	0.45
1:B:2064:ARG:O	1:B:2066:THR:HG23	2.17	0.45
4:B:282:SIA:H92	1:C:3279:SER:N	2.30	0.45
1:A:1152:TYR:CD1	1:A:1152:TYR:N	2.84	0.45
1:B:2084:PRO:CA	4:B:282:SIA:C1	2.95	0.45
1:B:2262:LYS:HE3	1:B:2279:SER:OG	2.17	0.45
1:F:6220:GLU:CB	1:F:6246:GLU:HB2	2.47	0.45
1:E:5316:GLN:HA	1:E:5316:GLN:OE1	2.16	0.45
1:E:5368:LEU:N	1:E:5368:LEU:HD12	2.31	0.45
1:C:3205:ILE:HA	1:C:3205:ILE:HD12	1.78	0.45
1:C:3074:TRP:CD2	1:C:3078:LYS:HE2	2.52	0.45
1:C:3067:PRO:HB3	1:C:3192:LEU:CD1	2.44	0.45
1:D:4040:LEU:O	1:D:4041:GLU:C	2.54	0.45
1:B:2262:LYS:HE2	1:B:2282:MET:HE1	1.99	0.45
1:C:3428:VAL:HG21	1:C:3547:TRP:CD1	2.52	0.45
1:C:3024:PRO:HG3	1:C:3037:PHE:CE2	2.52	0.45
1:E:5461:PRO:HG2	1:E:5464:VAL:HG23	1.97	0.45
1:B:2119:LEU:HD12	1:B:2119:LEU:C	2.37	0.45
1:C:3353:GLN:O	1:C:3467:ASP:HA	2.16	0.45
1:C:3284:HIS:O	1:C:3288:GLN:HG2	2.17	0.45
1:F:6311:ASP:OD1	1:F:6313:ARG:HB2	2.16	0.45
1:F:6389:VAL:O	1:F:6390:CYS:HB2	2.16	0.45
1:C:3272:ALA:O	1:C:3289:LYS:NZ	2.49	0.45
1:C:3097:LEU:HD11	1:C:3101:PHE:CE2	2.52	0.45
6:A:1[Z]:HTQ:H191	7:A:8638:HOH:O	2.17	0.45

Continued on next page...

Continued from previous page...

Atom-1	Atom-2	Interatomic distance (Å)	Clash overlap (Å)
1:C:3527:LEU:HD11	1:C:3533:THR:HG22	1.98	0.45
1:B:2140:HIS:HD2	1:B:2141:GLY:O	2.00	0.45
1:B:2045:GLN:N	1:F:6488:GLU:HG3	2.32	0.45
1:A:1199:ARG:HG2	1:A:1199:ARG:NH1	2.30	0.45
1:A:1292:GLU:O	1:A:1296:GLU:HG3	2.16	0.45
1:A:1447:TYR:C	1:A:1447:TYR:CD2	2.89	0.45
1:E:5047:VAL:HG21	1:E:5155:LEU:HD23	1.99	0.45
1:F:6343:THR:HB	1:F:6442:ALA:HB2	1.99	0.45
1:A:1355:PHE:CZ	1:A:1360:PRO:HG3	2.52	0.45
1:B:2452:ARG:CZ	1:B:2462:LYS:HA	2.47	0.45
1:E:5420:LEU:HD12	1:E:5547:TRP:HZ2	1.82	0.45
1:D:4391:ILE:CG2	1:D:4396:ILE:HD13	2.47	0.45
1:D:4104:ARG:CZ	1:D:4153:ASP:HB2	2.47	0.45
1:C:3304:LEU:HD22	1:C:3304:LEU:N	2.32	0.44
1:B:2104:ARG:HB3	1:B:2104:ARG:NH1	2.30	0.44
1:C:3383:TRP:CZ3	1:C:3393:LYS:HB2	2.52	0.44
1:C:3366:TYR:HA	1:C:3367:PRO:HD3	1.83	0.44
1:D:4527:LEU:HD11	1:D:4533:THR:CG2	2.48	0.44
1:D:4143:GLY:N	6:D:414:HTQ:H42	2.32	0.44
1:F:6072:GLU:HG3	7:F:8439:HOH:O	2.17	0.44
1:E:5359:ILE:N	1:E:5360:PRO:HD2	2.32	0.44
1:B:2355:PHE:HD1	1:B:2418:LEU:HD22	1.82	0.44
1:E:5097:LEU:HD11	1:E:5101:PHE:CE2	2.52	0.44
1:D:4351:ASN:ND2	1:D:4449:PHE:HB3	2.31	0.44
1:B:2132:ARG:HD3	1:B:2132:ARG:HA	1.83	0.44
1:D:4246:GLU:HG2	1:D:4447:TYR:OH	2.17	0.44
1:D:4221:SER:HA	1:D:4247:SER:O	2.18	0.44
1:D:4206:ALA:HA	1:D:4210:GLY:O	2.17	0.44
1:C:3198:LEU:HB3	1:C:3239:LEU:HB3	1.99	0.44
1:B:2201:VAL:O	1:B:2205:ILE:HB	2.17	0.44
1:E:5304:LEU:HD13	6:E:515:HTQ:H191	2.00	0.44
1:E:5254:VAL:HG13	1:E:5255:LEU:N	2.31	0.44
1:A:1221:SER:OG	5:A:11:CL:CL	2.68	0.44
1:E:5334:GLU:O	1:E:5338:GLU:HG3	2.18	0.44
1:F:6201:VAL:HG13	1:F:6205:ILE:HB	1.99	0.44
1:D:4074:TRP:CD2	1:D:4078:LYS:HE2	2.52	0.44
1:D:4119:LEU:O	1:D:4119:LEU:HD12	2.17	0.44
1:E:5456:SER:HB3	1:E:5460:LYS:HD3	2.00	0.44
1:D:4111:LYS:HG2	7:D:7506:HOH:O	2.18	0.44
1:C:3492:LEU:O	1:C:3496:VAL:HG23	2.17	0.44
1:E:5156:ALA:O	1:E:5160:HIS:HB2	2.17	0.44

Continued on next page...

Continued from previous page...

Atom-1	Atom-2	Interatomic distance (Å)	Clash overlap (Å)
1:E:5068:PRO:HB3	1:E:5193:ASP:OD1	2.18	0.44
1:C:3414:LYS:O	1:C:3418:LEU:HG	2.18	0.44
1:A:1278:THR:OG1	1:A:1281:VAL:HG23	2.18	0.44
1:D:4464:VAL:HG12	1:D:4467:ASP:HB2	2.00	0.44
1:E:5292:GLU:CD	1:E:5292:GLU:N	2.71	0.44
1:A:1389:VAL:O	1:A:1390:CYS:HB2	2.18	0.44
1:E:5205:ILE:HA	1:E:5205:ILE:HD12	1.80	0.44
1:B:2311:ASP:OD1	1:B:2313:ARG:HB2	2.17	0.44
1:B:2304:LEU:CD2	1:B:2318:LEU:HD21	2.48	0.44
1:C:3191:HIS:HA	1:C:3194:GLN:OE1	2.17	0.44
1:F:6348:VAL:O	1:F:6446:MET:HA	2.18	0.44
1:E:5064:ARG:NH2	1:E:5114:GLU:OE2	2.50	0.44
1:C:3242:ARG:CG	1:C:3242:ARG:NH1	2.81	0.44
1:A:1382:LEU:HD23	1:A:1396:ILE:HG23	2.00	0.44
1:E:5461:PRO:O	1:E:5464:VAL:HG23	2.18	0.44
1:B:2524:GLU:OE2	1:B:2538:LYS:HD3	2.18	0.44
1:F:6039:SER:HA	7:F:8282:HOH:O	2.17	0.44
1:F:6052:GLY:O	4:F:682:SIA:O1A	2.36	0.43
1:F:6257:LYS:NZ	1:F:6316:GLN:NE2	2.66	0.43
1:B:2349:GLY:HA3	1:B:2447:TYR:CE1	2.53	0.43
1:C:3420:LEU:HD12	1:C:3547:TRP:HZ2	1.83	0.43
1:E:5447:TYR:HB3	1:E:5517:TRP:CZ2	2.53	0.43
1:D:4312:PRO:HG2	1:D:4383:TRP:CD1	2.53	0.43
1:E:5306:LEU:HD22	1:E:5366:TYR:CE1	2.53	0.43
1:E:5366:TYR:HD2	1:E:5368:LEU:HD11	1.83	0.43
1:C:3149:ALA:CB	1:C:3169:GLN:HG3	2.48	0.43
1:E:5258:LYS:HE2	7:E:7744:HOH:O	2.18	0.43
1:B:2337:ALA:C	1:B:2339:ARG:H	2.22	0.43
1:C:3308:LEU:HB2	1:C:3309:GLN:NE2	2.33	0.43
1:E:5143:GLY:O	1:E:5144:LEU:HB2	2.17	0.43
1:A:1026:VAL:CG1	1:A:1207:SER:HB3	2.48	0.43
1:B:2255:LEU:HD21	6:B:212:HTQ:H91	2.00	0.43
1:F:6079:ASN:ND2	3:F:679:NDG:H8C1	2.34	0.43
1:C:3357:TRP:HB2	6:C:3[Y]:HTQ:H171	1.99	0.43
1:E:5142:GLY:HA2	6:E:515:HTQ:H151	1.99	0.43
1:B:2098:SER:O	1:B:2102:THR:HB	2.19	0.43
1:A:1268:ILE:HD11	1:A:1319:LEU:HD21	2.00	0.43
1:B:2199:ARG:HD2	7:B:7112:HOH:O	2.18	0.43
1:D:4409:ASP:OD1	1:D:4411:VAL:N	2.51	0.43
1:F:6215:VAL:N	1:F:6241:HIS:HD2	1.91	0.43
1:B:2283:VAL:HG12	1:B:2287:ARG:NH1	2.33	0.43

Continued on next page...

Continued from previous page...

Atom-1	Atom-2	Interatomic distance (Å)	Clash overlap (Å)
1:A:1402:LYS:HG2	1:A:1546:PHE:CZ	2.54	0.43
1:C:3350:ILE:O	1:C:3448:GLU:HA	2.18	0.43
1:A:1218:PHE:HB2	1:A:1244:ILE:HB	2.00	0.43
1:A:1125:ALA:HB2	1:A:1133:LEU:CD1	2.49	0.43
1:E:5221:SER:OG	1:E:5468:HIS:NE2	2.50	0.43
1:D:4359:ILE:HB	1:D:4360:PRO:HD3	2.01	0.43
1:A:1409:ASP:HB3	1:A:1412:LYS:HB2	2.01	0.43
1:B:2540:LYS:O	1:B:2544:VAL:HG23	2.18	0.43
1:F:6058:PRO:HA	7:F:7119:HOH:O	2.18	0.43
1:B:2332:PRO:O	1:B:2336:GLN:HG3	2.17	0.43
1:A:1366:TYR:O	6:A:1[Y]:HTQ:H171	2.19	0.43
1:D:4372:GLN:HG2	1:D:4373:LEU:N	2.34	0.43
1:C:3414:LYS:O	1:C:3417:PHE:HB3	2.19	0.43
1:C:3464:VAL:CG2	6:C:3[Y]:HTQ:H191	2.48	0.43
1:D:4369:SER:HA	6:D:4[Z]:HTQ:H42	1.99	0.43
1:B:2089:GLN:HB2	1:B:2146:VAL:HG12	2.00	0.43
1:F:6435:ARG:NH1	1:F:6544:VAL:HG11	2.33	0.43
1:D:4211:ASN:C	1:D:4213:GLY:H	2.22	0.43
1:F:6447:TYR:CD2	1:F:6447:TYR:C	2.92	0.43
1:A:1266:GLU:O	1:A:1270:ILE:HG13	2.18	0.43
1:F:6310:GLY:HA3	7:F:7283:HOH:O	2.18	0.43
1:A:1177:PHE:HE1	1:A:1191:HIS:CD2	2.36	0.43
1:A:1225:GLU:O	1:A:1229:VAL:HG23	2.18	0.43
1:B:2547:TRP:CE3	1:B:2550:LEU:HD23	2.53	0.43
1:E:5425:MET:HE1	6:E:515:HTQ:H72	1.99	0.43
1:E:5461:PRO:O	1:E:5463:THR:N	2.51	0.43
1:B:2218:PHE:CB	1:B:2244:ILE:HB	2.49	0.43
1:D:4063:LEU:HD21	1:D:4069:GLN:NE2	2.34	0.43
1:E:5145:MET:CG	1:E:5318:LEU:HD21	2.48	0.43
1:D:4370:GLU:HB2	7:D:7875:HOH:O	2.19	0.43
1:C:3369:SER:HA	6:C:3[Z]:HTQ:H11	2.01	0.43
1:C:3452:ARG:HD2	1:C:3464:VAL:O	2.19	0.43
1:D:4264:LEU:HD11	1:D:4319:LEU:HD23	1.99	0.43
1:E:5149:ALA:CB	1:E:5169:GLN:HG3	2.48	0.43
1:B:2102:THR:OG1	1:B:2104:ARG:HG2	2.19	0.43
1:A:1409:ASP:OD1	1:A:1411:VAL:N	2.50	0.43
1:C:3038:VAL:CG2	1:C:3049:ILE:HD12	2.48	0.43
1:A:1079:ASN:O	4:A:182:SIA:C4	2.67	0.43
1:B:2262:LYS:N	1:B:2263:PRO:CD	2.82	0.43
1:E:5394:GLU:HG3	1:E:5395:LEU:CD2	2.49	0.43
1:E:5264:LEU:HD21	1:E:5319:LEU:HD23	2.01	0.43

Continued on next page...

Continued from previous page...

Atom-1	Atom-2	Interatomic distance (Å)	Clash overlap (Å)
1:E:5255:LEU:HD21	6:E:515:HTQ:H51	2.01	0.43
1:F:6420:LEU:CD1	1:F:6547:TRP:HZ2	2.30	0.43
1:A:1338:GLU:C	1:A:1339:ARG:HD2	2.40	0.43
1:B:2199:ARG:CD	7:B:7112:HOH:O	2.67	0.43
1:B:2030:HIS:HB3	1:B:2073:PRO:HA	2.00	0.43
1:B:2553:LYS:HD3	7:B:8382:HOH:O	2.19	0.43
1:F:6359:ILE:CD1	6:F:616:HTQ:H22	2.49	0.42
1:E:5237:LYS:HZ3	1:E:5342:HIS:CB	2.31	0.42
1:E:5460:LYS:HA	1:E:5461:PRO:HD2	1.79	0.42
1:C:3140:HIS:HB2	7:C:7490:HOH:O	2.18	0.42
1:E:5026:VAL:HG13	1:E:5207:SER:HB3	2.01	0.42
1:B:2375:GLN:O	1:B:2378:ALA:HB3	2.18	0.42
1:D:4311:ASP:OD1	1:D:4313:ARG:HB2	2.19	0.42
1:C:3143:GLY:O	1:C:3144:LEU:HB2	2.19	0.42
1:C:3304:LEU:O	1:C:3364:MET:HG2	2.19	0.42
1:F:6409:ASP:OD2	1:F:6412:LYS:HB2	2.19	0.42
1:C:3045:GLN:HA	1:C:3046:PRO:HD3	1.91	0.42
1:E:5464:VAL:HB	7:E:7870:HOH:O	2.19	0.42
1:A:1477:GLY:HA2	1:A:1493:SER:OG	2.19	0.42
1:B:2407:THR:O	1:B:2413:LYS:HE2	2.19	0.42
1:F:6375:GLN:HE21	1:F:6375:GLN:HB3	1.60	0.42
1:C:3501:ALA:O	1:C:3505:ARG:HG2	2.19	0.42
1:F:6268:ILE:HD11	1:F:6319:LEU:CD2	2.50	0.42
1:C:3268:ILE:CD1	1:C:3319:LEU:HD21	2.49	0.42
1:A:1378:ALA:HA	7:A:8101:HOH:O	2.19	0.42
1:C:3495:MET:HE3	1:C:3533:THR:HG21	2.01	0.42
1:C:3119:LEU:O	1:C:3119:LEU:HD12	2.18	0.42
1:B:2414:LYS:HB3	1:B:2414:LYS:HE3	1.74	0.42
1:F:6370:GLU:C	1:F:6372:GLN:H	2.21	0.42
1:B:2268:ILE:HD11	1:B:2319:LEU:CD2	2.49	0.42
1:C:3373:LEU:HD12	1:C:3377:THR:HB	2.01	0.42
1:A:1437:HIS:HD2	1:A:1444:THR:OG1	2.02	0.42
1:A:1306:LEU:HD22	1:A:1366:TYR:CE1	2.55	0.42
1:B:2464:VAL:HA	7:B:8607:HOH:O	2.18	0.42
1:C:3357:TRP:O	1:C:3360:PRO:HD2	2.19	0.42
1:D:4277:THR:HG22	1:D:4278:THR:HG23	2.02	0.42
1:C:3251:LEU:HD21	1:C:3333:GLU:HG3	2.00	0.42
1:D:4324:ASP:OD2	1:D:4327:LEU:HB3	2.19	0.42
1:E:5146:VAL:HG22	6:E:515:HTQ:H171	2.01	0.42
1:C:3100:LEU:HD13	1:C:3358:LEU:HD11	2.02	0.42
1:D:4030:HIS:HB3	1:D:4073:PRO:HA	2.02	0.42

Continued on next page...

Continued from previous page...

Atom-1	Atom-2	Interatomic distance (Å)	Clash overlap (Å)
1:D:4125:ALA:HB2	1:D:4133:LEU:HD12	2.02	0.42
1:F:6266:GLU:O	1:F:6270:ILE:HG13	2.20	0.42
1:B:2036:LYS:HG2	7:B:8453:HOH:O	2.20	0.42
1:B:2079:ASN:CB	7:B:8690:HOH:O	2.61	0.42
1:C:3139:ILE:O	1:C:3223:GLY:HA3	2.20	0.42
1:F:6262:LYS:HE2	1:F:6282:MET:CE	2.49	0.42
1:B:2346:TYR:HB3	1:B:2437:HIS:CD2	2.54	0.42
1:E:5478:ALA:N	1:E:5479:PRO:CD	2.82	0.42
1:B:2205:ILE:HD12	1:B:2205:ILE:HA	1.81	0.42
1:C:3100:LEU:HD13	1:C:3358:LEU:CD1	2.49	0.42
1:A:1304:LEU:HD13	6:A:111:HTQ:C17	2.39	0.42
1:B:2373:LEU:HA	7:B:7705:HOH:O	2.19	0.42
1:E:5391:ILE:HB	7:E:7649:HOH:O	2.20	0.42
1:C:3218:PHE:HB2	1:C:3244:ILE:HB	2.02	0.42
1:A:1306:LEU:HD23	1:A:1367:PRO:HD3	2.02	0.42
1:F:6083:TYR:CZ	1:F:6108:ILE:HD13	2.55	0.42
1:F:6354:GLU:O	1:F:6468:HIS:HB2	2.19	0.42
1:D:4079:ASN:HB2	7:D:8164:HOH:O	2.18	0.42
1:A:1090:ASP:HB3	1:A:1093:ALA:HB3	2.02	0.42
1:E:5528:GLN:O	1:E:5533:THR:HA	2.20	0.42
1:C:3153:ASP:OD2	1:C:3155:LEU:HB2	2.19	0.42
1:C:3237:LYS:HG2	7:C:7248:HOH:O	2.20	0.42
1:A:1087:CYS:O	1:A:1089:GLN:HG2	2.20	0.41
1:C:3251:LEU:HD23	1:C:3251:LEU:HA	1.87	0.41
1:A:1205:ILE:HA	1:A:1205:ILE:HD12	1.91	0.41
1:D:4205:ILE:HD12	1:D:4205:ILE:HA	1.86	0.41
1:C:3533:THR:C	1:C:3534:GLN:HG3	2.40	0.41
1:D:4366:TYR:HA	1:D:4367:PRO:HD3	1.86	0.41
1:C:3249:VAL:HG23	1:C:3251:LEU:H	1.84	0.41
1:C:3329:LEU:HG	7:C:8361:HOH:O	2.20	0.41
1:E:5083:TYR:CE2	1:E:5108:ILE:HD12	2.55	0.41
1:E:5112:LEU:O	1:E:5113:SER:HB2	2.20	0.41
1:E:5311:ASP:HA	1:E:5312:PRO:HD3	1.88	0.41
1:D:4343:THR:HB	1:D:4442:ALA:CB	2.44	0.41
1:F:6104:ARG:O	1:F:6482:LYS:NZ	2.52	0.41
1:E:5491:ARG:HG2	1:E:5491:ARG:NH1	2.35	0.41
1:B:2140:HIS:HE1	7:B:7338:HOH:O	2.02	0.41
1:A:1040:LEU:HG	7:A:8379:HOH:O	2.19	0.41
1:D:4364:MET:HG3	6:D:414:HTQ:H181	2.02	0.41
1:B:2464:VAL:HG22	6:B:2[Y]:HTQ:H171	2.01	0.41
1:C:3375:GLN:HG3	1:C:3413:LYS:NZ	2.35	0.41

Continued on next page...

Continued from previous page...

Atom-1	Atom-2	Interatomic distance (Å)	Clash overlap (Å)
1:E:5023:PRO:HB2	1:E:5034:LEU:CD2	2.51	0.41
1:C:3460:LYS:HD2	7:C:7823:HOH:O	2.20	0.41
1:B:2218:PHE:HA	1:B:2244:ILE:O	2.21	0.41
1:B:2297:THR:O	1:B:2301:MET:HG2	2.21	0.41
1:A:1206:ALA:HA	1:A:1210:GLY:O	2.21	0.41
1:C:3340:ASN:O	1:C:3341:PHE:HB3	2.20	0.41
1:C:3173:GLY:HA3	7:C:7272:HOH:O	2.19	0.41
1:A:1528:GLN:O	1:A:1533:THR:HA	2.21	0.41
1:F:6218:PHE:CB	1:F:6244:ILE:HB	2.49	0.41
1:E:5229:VAL:HG13	1:E:5328:LEU:HD21	2.03	0.41
1:D:4218:PHE:CB	1:D:4244:ILE:HB	2.50	0.41
1:E:5414:LYS:HD3	1:E:5414:LYS:C	2.40	0.41
1:D:4538:LYS:HB3	1:D:4541:ASP:HB2	2.03	0.41
1:E:5420:LEU:CD1	1:E:5547:TRP:HZ2	2.33	0.41
1:D:4262:LYS:N	1:D:4263:PRO:CD	2.84	0.41
1:D:4023:PRO:CB	1:D:4034:LEU:HD21	2.50	0.41
1:E:5483:GLU:CG	1:E:5484:GLY:N	2.84	0.41
1:A:1309:GLN:NE2	1:A:1309:GLN:O	2.54	0.41
1:F:6257:LYS:NZ	1:F:6318:LEU:O	2.42	0.41
1:C:3145:MET:CG	1:C:3318:LEU:HD21	2.50	0.41
1:C:3257:LYS:NZ	1:C:3318:LEU:O	2.53	0.41
1:D:4304:LEU:HB3	6:D:414:HTQ:C19	2.50	0.41
1:E:5130:LYS:HE3	1:E:5132:ARG:HH12	1.81	0.41
1:D:4368:LEU:HB3	6:D:4[Y]:HTQ:O20	2.21	0.41
1:F:6151:THR:HB	1:F:6152:TYR:CE1	2.55	0.41
1:D:4348:VAL:O	1:D:4446:MET:HA	2.20	0.41
1:F:6048:ALA:HB3	1:F:6123:THR:HG23	2.03	0.41
1:F:6401:GLU:OE2	1:F:6405:GLY:HA3	2.20	0.41
1:F:6336:GLN:HE22	1:F:6433:VAL:HG22	1.86	0.41
1:E:5428:VAL:HG21	1:E:5547:TRP:CD1	2.56	0.41
1:D:4249:VAL:HG23	1:D:4251:LEU:H	1.86	0.41
1:D:4022:SER:O	1:D:4023:PRO:C	2.59	0.41
1:A:1332:PRO:O	1:A:1336:GLN:HG2	2.20	0.41
1:C:3478:ALA:N	1:C:3479:PRO:CD	2.83	0.41
6:D:414:HTQ:H41	7:D:14:HOH:O	2.20	0.41
1:A:1211:ASN:HA	1:A:1212:PRO:HD2	1.92	0.41
1:F:6025:VAL:CG2	1:F:6034:LEU:HD23	2.51	0.41
1:A:1220:GLU:HA	1:A:1246:GLU:O	2.21	0.41
1:C:3238:ASN:N	7:C:8682:HOH:O	2.53	0.41
1:A:1218:PHE:CB	1:A:1244:ILE:HB	2.50	0.41
1:A:1231:VAL:HA	1:A:1240:PHE:HZ	1.84	0.41

Continued on next page...

Continued from previous page...

Atom-1	Atom-2	Interatomic distance (Å)	Clash overlap (Å)
1:E:5218:PHE:CB	1:E:5244:ILE:HB	2.50	0.41
1:D:4350:ILE:HD13	1:D:4427:GLY:HA2	2.03	0.41
1:E:5367:PRO:HA	7:E:8558:HOH:O	2.21	0.41
1:D:4530:GLY:O	1:D:4531:ALA:C	2.59	0.41
1:B:2057:LYS:HE2	7:B:8660:HOH:O	2.20	0.41
1:B:2161:GLU:HB3	1:B:2501:ALA:CB	2.50	0.41
1:F:6143:GLY:O	1:F:6144:LEU:HB2	2.21	0.41
1:E:5161:GLU:O	1:E:5163:VAL:HG13	2.21	0.41
1:F:6336:GLN:NE2	1:F:6433:VAL:HG13	2.36	0.41
1:D:4135:VAL:HG21	1:D:4205:ILE:HG12	2.03	0.41
1:F:6057:LYS:HE3	7:F:8439:HOH:O	2.21	0.41
1:E:5201:VAL:HG13	1:E:5205:ILE:HB	2.03	0.41
1:B:2277:THR:HG22	1:B:2278:THR:HG23	2.03	0.41
1:B:2420:LEU:C	1:B:2420:LEU:HD12	2.42	0.40
1:F:6089:GLN:OE1	1:F:6146:VAL:HB	2.20	0.40
1:C:3252:THR:HG22	1:C:3254:VAL:HG12	2.03	0.40
1:D:4143:GLY:O	1:D:4144:LEU:HB2	2.21	0.40
1:A:1547:TRP:CZ3	1:A:1550:LEU:HD23	2.56	0.40
1:F:6140:HIS:HE1	7:F:7206:HOH:O	2.04	0.40
1:A:1142:GLY:HA2	6:A:111:HTQ:H131	2.04	0.40
1:A:1368:LEU:HB2	6:A:1[Y]:HTQ:H151	2.04	0.40
1:F:6264:LEU:O	1:F:6268:ILE:HG13	2.21	0.40
1:F:6341:PHE:O	1:F:6342:HIS:C	2.59	0.40
1:E:5361:MET:HB2	6:E:5[Z]:HTQ:H181	2.02	0.40
1:D:4081:THR:OG1	3:D:479:NDG:H8C3	2.21	0.40
1:D:4527:LEU:HD11	1:D:4533:THR:HG22	2.03	0.40
1:E:5246:GLU:OE1	1:E:5471:GLU:OE1	2.40	0.40
1:B:2353:GLN:O	1:B:2467:ASP:HA	2.22	0.40
1:D:4361:MET:CE	1:D:4363:LEU:HG	2.50	0.40
1:B:2048:ALA:HB3	1:B:2123:THR:HG23	2.03	0.40
1:D:4125:ALA:HB2	1:D:4133:LEU:CD1	2.51	0.40
1:E:5103:ASN:ND2	1:E:5481:LEU:HD12	2.36	0.40
1:E:5120:ASN:HB2	1:E:5167:THR:OG1	2.21	0.40
1:A:1363:LEU:HD13	6:A:111:HTQ:C18	2.51	0.40
1:E:5392:ALA:O	1:E:5394:GLU:N	2.55	0.40
1:A:1301:MET:HB2	1:A:1303:PHE:CE1	2.57	0.40
1:B:2040:LEU:O	1:B:2041:GLU:C	2.60	0.40
1:C:3089:GLN:OE1	1:C:3146:VAL:HB	2.22	0.40
1:E:5295:LEU:O	1:E:5299:LEU:HD22	2.22	0.40
1:D:4051:LEU:HD13	1:D:4083:TYR:CD1	2.57	0.40
1:C:3402:LYS:HE2	1:C:3546:PHE:CD1	2.57	0.40

There are no symmetry-related clashes.

5.3 Torsion angles [i](#)

5.3.1 Protein backbone [i](#)

In the following table, the Percentiles column shows the percent Ramachandran outliers of the chain as a percentile score with respect to all X-ray entries followed by that with respect to entries of similar resolution.

The Analysed column shows the number of residues for which the backbone conformation was analysed, and the total number of residues.

Mol	Chain	Analysed	Favoured	Allowed	Outliers	Percentiles	
1	A	530/548 (97%)	495 (93%)	33 (6%)	2 (0%)	39	74
1	B	529/548 (96%)	496 (94%)	28 (5%)	5 (1%)	21	55
1	C	529/548 (96%)	488 (92%)	38 (7%)	3 (1%)	30	65
1	D	530/548 (97%)	503 (95%)	23 (4%)	4 (1%)	24	58
1	E	529/548 (96%)	495 (94%)	27 (5%)	7 (1%)	15	44
1	F	529/548 (96%)	493 (93%)	32 (6%)	4 (1%)	24	58
All	All	3176/3288 (97%)	2970 (94%)	181 (6%)	25 (1%)	24	58

All (25) Ramachandran outliers are listed below:

Mol	Chain	Res	Type
1	B	2253	SER
1	C	3237	LYS
1	E	5393	LYS
1	E	5462	LYS
1	F	6341	PHE
1	A	1185	SER
1	B	2041	GLU
1	C	3185	SER
1	D	4253	SER
1	E	5237	LYS
1	F	6185	SER
1	B	2373	LEU
1	C	3341	PHE
1	D	4041	GLU
1	E	5538	LYS
1	A	1253	SER
1	B	2042	GLY

Continued on next page...

Continued from previous page...

Mol	Chain	Res	Type
1	B	2540	LYS
1	D	4023	PRO
1	E	5185	SER
1	F	6127	LEU
1	E	5221	SER
1	E	5317	PRO
1	D	4205	ILE
1	F	6397	PRO

5.3.2 Protein sidechains ⓘ

In the following table, the Percentiles column shows the percent sidechain outliers of the chain as a percentile score with respect to all X-ray entries followed by that with respect to entries of similar resolution.

The Analysed column shows the number of residues for which the sidechain conformation was analysed, and the total number of residues.

Mol	Chain	Analysed	Rotameric	Outliers	Percentiles	
1	A	448/463 (97%)	437 (98%)	11 (2%)	55	86
1	B	447/463 (96%)	433 (97%)	14 (3%)	47	81
1	C	447/463 (96%)	432 (97%)	15 (3%)	44	78
1	D	448/463 (97%)	437 (98%)	11 (2%)	55	86
1	E	447/463 (96%)	431 (96%)	16 (4%)	42	76
1	F	447/463 (96%)	433 (97%)	14 (3%)	47	81
All	All	2684/2778 (97%)	2603 (97%)	81 (3%)	48	82

All (81) residues with a non-rotameric sidechain are listed below:

Mol	Chain	Res	Type
1	A	1033	VAL
1	A	1079	ASN
1	A	1218	PHE
1	A	1221	SER
1	A	1264	LEU
1	A	1309	GLN
1	A	1338	GLU
1	A	1366	TYR
1	A	1372	GLN
1	A	1455	PHE

Continued on next page...

Continued from previous page...

Mol	Chain	Res	Type
1	A	1500	TRP
1	B	2104	ARG
1	B	2155	LEU
1	B	2218	PHE
1	B	2220	GLU
1	B	2221	SER
1	B	2242	ARG
1	B	2258	LYS
1	B	2340	ASN
1	B	2358	LEU
1	B	2366	TYR
1	B	2420	LEU
1	B	2499	PHE
1	B	2500	TRP
1	B	2534	GLN
1	C	3155	LEU
1	C	3218	PHE
1	C	3220	GLU
1	C	3258	LYS
1	C	3264	LEU
1	C	3299	LEU
1	C	3304	LEU
1	C	3316	GLN
1	C	3318	LEU
1	C	3342	HIS
1	C	3366	TYR
1	C	3375	GLN
1	C	3381	LEU
1	C	3500	TRP
1	C	3534	GLN
1	D	4023	PRO
1	D	4079	ASN
1	D	4095	GLN
1	D	4218	PHE
1	D	4264	LEU
1	D	4309	GLN
1	D	4338	GLU
1	D	4372	GLN
1	D	4381	LEU
1	D	4420	LEU
1	D	4549	ASN
1	E	5111	LYS

Continued on next page...

Continued from previous page...

Mol	Chain	Res	Type
1	E	5155	LEU
1	E	5218	PHE
1	E	5220	GLU
1	E	5225	GLU
1	E	5242	ARG
1	E	5258	LYS
1	E	5299	LEU
1	E	5316	GLN
1	E	5343	THR
1	E	5366	TYR
1	E	5381	LEU
1	E	5404	LEU
1	E	5499	PHE
1	E	5500	TRP
1	E	5534	GLN
1	F	6079	ASN
1	F	6155	LEU
1	F	6218	PHE
1	F	6220	GLU
1	F	6258	LYS
1	F	6264	LEU
1	F	6299	LEU
1	F	6318	LEU
1	F	6342	HIS
1	F	6366	TYR
1	F	6500	TRP
1	F	6519	GLU
1	F	6532	ASN
1	F	6534	GLN

Some sidechains can be flipped to improve hydrogen bonding and reduce clashes. All (85) such sidechains are listed below:

Mol	Chain	Res	Type
1	A	1069	GLN
1	A	1131	ASN
1	A	1140	HIS
1	A	1162	ASN
1	A	1241	HIS
1	A	1284	HIS
1	A	1309	GLN
1	A	1336	GLN
1	A	1351	ASN

Continued on next page...

Continued from previous page...

Mol	Chain	Res	Type
1	A	1372	GLN
1	A	1436	ASN
1	A	1437	HIS
1	A	1537	GLN
1	B	2140	HIS
1	B	2202	GLN
1	B	2241	HIS
1	B	2267	GLN
1	B	2342	HIS
1	B	2351	ASN
1	B	2353	GLN
1	B	2372	GLN
1	B	2437	HIS
1	B	2450	GLN
1	B	2528	GLN
1	B	2532	ASN
1	B	2537	GLN
1	C	3107	ASN
1	C	3131	ASN
1	C	3140	HIS
1	C	3241	HIS
1	C	3309	GLN
1	C	3336	GLN
1	C	3340	ASN
1	C	3351	ASN
1	C	3372	GLN
1	C	3375	GLN
1	C	3436	ASN
1	C	3437	HIS
1	C	3450	GLN
1	C	3528	GLN
1	C	3532	ASN
1	C	3537	GLN
1	D	4045	GLN
1	D	4069	GLN
1	D	4107	ASN
1	D	4140	HIS
1	D	4162	ASN
1	D	4241	HIS
1	D	4309	GLN
1	D	4351	ASN
1	D	4372	GLN

Continued on next page...

Continued from previous page...

Mol	Chain	Res	Type
1	D	4375	GLN
1	D	4436	ASN
1	D	4437	HIS
1	D	4537	GLN
1	E	5030	HIS
1	E	5095	GLN
1	E	5131	ASN
1	E	5140	HIS
1	E	5162	ASN
1	E	5202	GLN
1	E	5241	HIS
1	E	5288	GLN
1	E	5336	GLN
1	E	5351	ASN
1	E	5372	GLN
1	E	5436	ASN
1	E	5437	HIS
1	E	5534	GLN
1	E	5537	GLN
1	F	6069	GLN
1	F	6095	GLN
1	F	6140	HIS
1	F	6162	ASN
1	F	6238	ASN
1	F	6241	HIS
1	F	6316	GLN
1	F	6336	GLN
1	F	6351	ASN
1	F	6353	GLN
1	F	6372	GLN
1	F	6375	GLN
1	F	6450	GLN
1	F	6532	ASN
1	F	6537	GLN

5.3.3 RNA ⓘ

There are no RNA molecules in this entry.

5.4 Non-standard residues in protein, DNA, RNA chains ⓘ

There are no non-standard protein/DNA/RNA residues in this entry.

5.5 Carbohydrates ⓘ

There are no carbohydrates in this entry.

5.6 Ligand geometry ⓘ

Of 30 ligands modelled in this entry, 2 are monoatomic - leaving 28 for Mogul analysis.

In the following table, the Counts columns list the number of bonds (or angles) for which Mogul statistics could be retrieved, the number of bonds (or angles) that are observed in the model and the number of bonds (or angles) that are defined in the chemical component dictionary. The Link column lists molecule types, if any, to which the group is linked. The Z score for a bond length (or angle) is the number of standard deviations the observed value is removed from the expected value. A bond length (or angle) with $|Z| > 2$ is considered an outlier worth inspection. RMSZ is the root-mean-square of all Z scores of the bond lengths (or angles).

Mol	Type	Chain	Res	Link	Bond lengths			Bond angles		
					Counts	RMSZ	# Z > 2	Counts	RMSZ	# Z > 2
6	HTQ	A	1[Y]	-	22,22,22	2.11	10 (45%)	31,31,31	1.51	3 (9%)
6	HTQ	A	1[Z]	-	22,22,22	2.13	10 (45%)	31,31,31	1.80	3 (9%)
6	HTQ	A	111	-	22,22,22	1.93	8 (36%)	31,31,31	1.75	5 (16%)
2	NAG	A	179	1	14,14,15	0.61	0	15,19,21	0.78	1 (6%)
4	SIA	A	182	-	17,21,21	0.99	1 (5%)	19,31,31	1.10	2 (10%)
6	HTQ	B	2[Y]	-	22,22,22	1.99	8 (36%)	31,31,31	1.24	2 (6%)
6	HTQ	B	2[Z]	-	22,22,22	2.01	8 (36%)	31,31,31	1.40	3 (9%)
6	HTQ	B	212	-	22,22,22	1.89	7 (31%)	31,31,31	1.66	3 (9%)
3	NDG	B	279	1	14,14,15	0.51	0	15,19,21	0.77	1 (6%)
4	SIA	B	282	-	17,21,21	1.14	1 (5%)	19,31,31	1.17	1 (5%)
6	HTQ	C	3[Y]	-	22,22,22	2.03	8 (36%)	31,31,31	1.52	5 (16%)
6	HTQ	C	3[Z]	-	22,22,22	2.08	8 (36%)	31,31,31	1.50	5 (16%)
6	HTQ	C	313	-	22,22,22	2.03	8 (36%)	31,31,31	1.46	2 (6%)
2	NAG	C	379	1	14,14,15	0.55	0	15,19,21	0.71	1 (6%)
6	HTQ	D	4[Y]	-	22,22,22	2.01	8 (36%)	31,31,31	1.46	4 (12%)
6	HTQ	D	4[Z]	-	22,22,22	1.95	8 (36%)	31,31,31	1.28	2 (6%)
6	HTQ	D	414	-	22,22,22	2.07	9 (40%)	31,31,31	2.04	4 (12%)
3	NDG	D	479	1	14,14,15	0.51	0	15,19,21	0.69	1 (6%)
6	HTQ	E	5[Y]	-	22,22,22	2.04	8 (36%)	31,31,31	1.34	4 (12%)
6	HTQ	E	5[Z]	-	22,22,22	2.06	9 (40%)	31,31,31	1.50	2 (6%)
6	HTQ	E	515	-	22,22,22	2.01	8 (36%)	31,31,31	1.48	2 (6%)
2	NAG	E	579	1	14,14,15	0.55	0	15,19,21	0.74	1 (6%)

Mol	Type	Chain	Res	Link	Bond lengths			Bond angles		
					Counts	RMSZ	# Z > 2	Counts	RMSZ	# Z > 2
2	NAG	E	580	-	14,14,15	0.53	0	15,19,21	0.72	1 (6%)
6	HTQ	F	6[Y]	-	22,22,22	2.06	8 (36%)	31,31,31	1.42	2 (6%)
6	HTQ	F	6[Z]	-	22,22,22	2.07	9 (40%)	31,31,31	1.52	3 (9%)
6	HTQ	F	616	-	22,22,22	1.90	8 (36%)	31,31,31	1.39	2 (6%)
3	NDG	F	679	1	14,14,15	0.59	0	15,19,21	0.72	1 (6%)
4	SIA	F	682	-	17,21,21	1.00	1 (5%)	19,31,31	0.77	0

In the following table, the Chirals column lists the number of chiral outliers, the number of chiral centers analysed, the number of these observed in the model and the number defined in the chemical component dictionary. Similar counts are reported in the Torsion and Rings columns. '-' means no outliers of that kind were identified.

Mol	Type	Chain	Res	Link	Chirals	Torsions	Rings
6	HTQ	A	1[Y]	-	-	0/12/33/33	0/1/3/3
6	HTQ	A	1[Z]	-	-	0/12/33/33	0/1/3/3
6	HTQ	A	111	-	-	0/12/33/33	0/1/3/3
2	NAG	A	179	1	-	0/6/23/26	0/1/1/1
4	SIA	A	182	-	-	0/14/38/38	0/1/1/1
6	HTQ	B	2[Y]	-	-	0/12/33/33	0/1/3/3
6	HTQ	B	2[Z]	-	-	0/12/33/33	0/1/3/3
6	HTQ	B	212	-	-	0/12/33/33	0/1/3/3
3	NDG	B	279	1	-	0/6/23/26	0/1/1/1
4	SIA	B	282	-	-	0/14/38/38	0/1/1/1
6	HTQ	C	3[Y]	-	-	0/12/33/33	0/1/3/3
6	HTQ	C	3[Z]	-	-	0/12/33/33	0/1/3/3
6	HTQ	C	313	-	-	0/12/33/33	0/1/3/3
2	NAG	C	379	1	-	0/6/23/26	0/1/1/1
6	HTQ	D	4[Y]	-	-	0/12/33/33	0/1/3/3
6	HTQ	D	4[Z]	-	-	0/12/33/33	0/1/3/3
6	HTQ	D	414	-	-	0/12/33/33	0/1/3/3
3	NDG	D	479	1	-	0/6/23/26	0/1/1/1
6	HTQ	E	5[Y]	-	-	0/12/33/33	0/1/3/3
6	HTQ	E	5[Z]	-	-	0/12/33/33	0/1/3/3
6	HTQ	E	515	-	-	0/12/33/33	0/1/3/3
2	NAG	E	579	1	-	0/6/23/26	0/1/1/1
2	NAG	E	580	-	-	0/6/23/26	0/1/1/1
6	HTQ	F	6[Y]	-	-	0/12/33/33	0/1/3/3
6	HTQ	F	6[Z]	-	-	0/12/33/33	0/1/3/3
6	HTQ	F	616	-	-	0/12/33/33	0/1/3/3
3	NDG	F	679	1	-	1/6/23/26	0/1/1/1
4	SIA	F	682	-	-	0/14/38/38	0/1/1/1

All (153) bond length outliers are listed below:

Mol	Chain	Res	Type	Atoms	Z	Observed(Å)	Ideal(Å)
6	A	111	HTQ	C2-C1	2.10	1.57	1.53
6	A	1[Y]	HTQ	C13-C11	2.11	1.55	1.52
6	F	6[Z]	HTQ	C13-C11	2.12	1.55	1.52
6	A	1[Z]	HTQ	C14-C13	2.12	1.56	1.51
6	D	414	HTQ	C13-C11	2.13	1.55	1.52
6	E	5[Z]	HTQ	C13-C11	2.20	1.55	1.52
6	A	1[Z]	HTQ	C13-C11	2.22	1.55	1.52
6	A	1[Y]	HTQ	C14-C13	2.25	1.57	1.51
6	D	4[Y]	HTQ	C15-C14	2.34	1.42	1.39
6	D	414	HTQ	C2-C3	2.35	1.58	1.52
6	E	5[Y]	HTQ	C15-C14	2.41	1.43	1.39
6	B	2[Z]	HTQ	C15-C14	2.45	1.43	1.39
6	F	616	HTQ	C15-C14	2.45	1.43	1.39
6	E	515	HTQ	C15-C14	2.45	1.43	1.39
6	B	2[Z]	HTQ	C2-C1	2.46	1.58	1.53
6	C	3[Y]	HTQ	C2-C1	2.48	1.58	1.53
6	D	4[Z]	HTQ	C16-C14	2.49	1.43	1.39
6	D	414	HTQ	C14-C13	2.49	1.57	1.51
6	E	5[Z]	HTQ	C4-C3	2.50	1.59	1.52
6	B	212	HTQ	O10-C11	2.50	1.40	1.34
6	A	111	HTQ	C15-C14	2.51	1.43	1.39
6	C	3[Z]	HTQ	C15-C14	2.52	1.43	1.39
6	F	616	HTQ	C2-C3	2.52	1.59	1.52
6	E	515	HTQ	C2-C1	2.52	1.58	1.53
6	C	3[Y]	HTQ	O10-C11	2.52	1.40	1.34
6	F	616	HTQ	C2-C1	2.53	1.58	1.53
6	A	1[Y]	HTQ	C2-C1	2.55	1.58	1.53
6	C	3[Z]	HTQ	C2-C1	2.56	1.58	1.53
6	E	5[Z]	HTQ	C2-C3	2.56	1.59	1.52
6	D	4[Z]	HTQ	C4-C5	2.58	1.58	1.53
6	A	1[Y]	HTQ	O10-C11	2.58	1.40	1.34
4	F	682	SIA	O6-C2	2.58	1.45	1.42
6	B	2[Y]	HTQ	C4-C3	2.59	1.59	1.52
6	E	5[Y]	HTQ	C2-C1	2.59	1.58	1.53
6	F	616	HTQ	C4-C3	2.60	1.59	1.52
6	C	313	HTQ	C15-C14	2.60	1.43	1.39
6	D	4[Y]	HTQ	C2-C1	2.60	1.58	1.53
6	B	212	HTQ	C16-C14	2.60	1.43	1.39
6	B	212	HTQ	C15-C14	2.61	1.43	1.39
6	A	1[Z]	HTQ	C4-C3	2.62	1.59	1.52
6	D	414	HTQ	C15-C14	2.63	1.43	1.39
6	D	414	HTQ	C4-C5	2.64	1.58	1.53

Continued on next page...

Continued from previous page...

Mol	Chain	Res	Type	Atoms	Z	Observed(Å)	Ideal(Å)
6	F	6[Y]	HTQ	C15-C14	2.64	1.43	1.39
6	F	6[Z]	HTQ	C15-C14	2.65	1.43	1.39
6	E	5[Z]	HTQ	C15-C14	2.66	1.43	1.39
6	C	313	HTQ	C4-C3	2.66	1.59	1.52
6	A	1[Z]	HTQ	C15-C14	2.67	1.43	1.39
6	A	111	HTQ	C16-C14	2.67	1.43	1.39
6	B	2[Y]	HTQ	C15-C14	2.67	1.43	1.39
6	A	111	HTQ	C2-C3	2.67	1.59	1.52
4	A	182	SIA	O6-C2	2.68	1.45	1.42
6	F	616	HTQ	C16-C14	2.68	1.43	1.39
6	F	6[Z]	HTQ	C2-C1	2.68	1.58	1.53
6	B	2[Y]	HTQ	O10-C11	2.69	1.40	1.34
6	E	515	HTQ	C4-C3	2.70	1.59	1.52
6	A	1[Z]	HTQ	C2-C3	2.70	1.59	1.52
6	D	4[Y]	HTQ	C2-C3	2.70	1.59	1.52
6	B	2[Y]	HTQ	C2-C3	2.71	1.59	1.52
6	C	3[Y]	HTQ	C15-C14	2.71	1.43	1.39
6	C	313	HTQ	C2-C3	2.72	1.59	1.52
6	D	4[Z]	HTQ	C2-C3	2.73	1.59	1.52
6	F	6[Y]	HTQ	C16-C14	2.74	1.43	1.39
6	A	111	HTQ	O10-C11	2.74	1.40	1.34
6	D	4[Z]	HTQ	C15-C14	2.74	1.43	1.39
6	A	1[Y]	HTQ	C15-C14	2.75	1.43	1.39
6	B	2[Z]	HTQ	C2-C3	2.75	1.59	1.52
6	A	1[Y]	HTQ	C2-C3	2.75	1.59	1.52
6	F	6[Z]	HTQ	C2-C3	2.76	1.59	1.52
6	A	111	HTQ	C4-C3	2.76	1.59	1.52
6	B	2[Z]	HTQ	C16-C14	2.77	1.43	1.39
6	C	3[Y]	HTQ	C2-C3	2.77	1.59	1.52
6	C	3[Z]	HTQ	C16-C14	2.78	1.43	1.39
6	E	5[Y]	HTQ	C2-C3	2.78	1.60	1.52
6	B	212	HTQ	C2-C3	2.79	1.60	1.52
6	D	4[Z]	HTQ	C4-C3	2.80	1.60	1.52
6	B	2[Y]	HTQ	C16-C14	2.80	1.43	1.39
6	F	6[Z]	HTQ	O10-C11	2.80	1.40	1.34
6	C	313	HTQ	C16-C14	2.83	1.43	1.39
6	C	313	HTQ	C2-C1	2.84	1.58	1.53
6	C	3[Y]	HTQ	C16-C14	2.84	1.43	1.39
6	E	515	HTQ	C2-C3	2.84	1.60	1.52
6	E	5[Z]	HTQ	C4-C5	2.84	1.58	1.53
6	E	515	HTQ	C16-C14	2.85	1.43	1.39
6	F	6[Y]	HTQ	C2-C3	2.86	1.60	1.52

Continued on next page...

Continued from previous page...

Mol	Chain	Res	Type	Atoms	Z	Observed(Å)	Ideal(Å)
6	D	4[Z]	HTQ	C2-C1	2.86	1.58	1.53
6	C	3[Z]	HTQ	C2-C3	2.86	1.60	1.52
6	B	2[Y]	HTQ	C2-C1	2.87	1.58	1.53
6	D	4[Y]	HTQ	C16-C14	2.87	1.43	1.39
6	B	212	HTQ	C4-C3	2.88	1.60	1.52
6	C	313	HTQ	C4-C5	2.90	1.58	1.53
6	E	515	HTQ	C4-C5	2.90	1.58	1.53
6	D	4[Z]	HTQ	O10-C11	2.91	1.41	1.34
6	F	6[Y]	HTQ	C4-C3	2.92	1.60	1.52
6	B	2[Y]	HTQ	C4-C5	2.93	1.58	1.53
6	F	6[Z]	HTQ	C4-C3	2.93	1.60	1.52
6	E	5[Y]	HTQ	C16-C14	2.94	1.43	1.39
6	F	616	HTQ	C9-N8	2.94	1.51	1.47
6	E	5[Z]	HTQ	C2-C1	2.96	1.59	1.53
6	E	5[Z]	HTQ	C16-C14	2.96	1.43	1.39
6	A	111	HTQ	C9-N8	2.98	1.51	1.47
6	F	6[Y]	HTQ	C2-C1	2.98	1.59	1.53
6	A	1[Y]	HTQ	C4-C3	2.98	1.60	1.52
6	F	6[Z]	HTQ	C16-C14	2.99	1.43	1.39
6	F	616	HTQ	O10-C11	3.00	1.41	1.34
6	F	6[Y]	HTQ	C4-C5	3.00	1.59	1.53
6	B	212	HTQ	C9-N8	3.01	1.51	1.47
6	A	1[Z]	HTQ	C4-C5	3.03	1.59	1.53
6	A	1[Z]	HTQ	C16-C14	3.03	1.44	1.39
6	C	3[Y]	HTQ	C4-C3	3.03	1.60	1.52
6	D	414	HTQ	C2-C1	3.04	1.59	1.53
6	F	616	HTQ	C4-C5	3.05	1.59	1.53
6	C	3[Z]	HTQ	C4-C3	3.11	1.60	1.52
6	E	5[Z]	HTQ	O10-C11	3.11	1.41	1.34
6	A	1[Z]	HTQ	C2-C1	3.13	1.59	1.53
6	C	313	HTQ	O10-C11	3.14	1.41	1.34
6	E	5[Y]	HTQ	C4-C3	3.15	1.61	1.52
6	E	5[Y]	HTQ	C4-C5	3.16	1.59	1.53
6	D	4[Y]	HTQ	C4-C3	3.16	1.61	1.52
6	A	1[Y]	HTQ	C16-C14	3.18	1.44	1.39
6	D	414	HTQ	C9-N8	3.18	1.51	1.47
6	B	2[Z]	HTQ	C4-C3	3.18	1.61	1.52
6	D	4[Y]	HTQ	C4-C5	3.19	1.59	1.53
6	B	2[Z]	HTQ	C4-C5	3.20	1.59	1.53
6	D	414	HTQ	O10-C11	3.20	1.41	1.34
6	E	515	HTQ	O10-C11	3.21	1.41	1.34
6	F	6[Z]	HTQ	C4-C5	3.21	1.59	1.53

Continued on next page...

Continued from previous page...

Mol	Chain	Res	Type	Atoms	Z	Observed(Å)	Ideal(Å)
4	B	282	SIA	O6-C2	3.25	1.45	1.42
6	B	212	HTQ	C4-C5	3.26	1.59	1.53
6	E	5[Y]	HTQ	O10-C11	3.27	1.42	1.34
6	F	6[Y]	HTQ	O10-C11	3.27	1.42	1.34
6	A	1[Z]	HTQ	C9-N8	3.28	1.52	1.47
6	A	1[Y]	HTQ	C4-C5	3.30	1.59	1.53
6	B	2[Z]	HTQ	O10-C11	3.31	1.42	1.34
6	B	2[Z]	HTQ	C9-N8	3.31	1.52	1.47
6	A	111	HTQ	C4-C5	3.32	1.59	1.53
6	C	3[Z]	HTQ	C9-N8	3.32	1.52	1.47
6	D	4[Y]	HTQ	O10-C11	3.36	1.42	1.34
6	D	4[Y]	HTQ	C9-N8	3.37	1.52	1.47
6	C	3[Z]	HTQ	C4-C5	3.37	1.59	1.53
6	F	6[Y]	HTQ	C9-N8	3.39	1.52	1.47
6	B	2[Y]	HTQ	C9-N8	3.40	1.52	1.47
6	C	3[Y]	HTQ	C9-N8	3.41	1.52	1.47
6	A	1[Z]	HTQ	O10-C11	3.42	1.42	1.34
6	E	5[Y]	HTQ	C9-N8	3.42	1.52	1.47
6	A	1[Y]	HTQ	C9-N8	3.43	1.52	1.47
6	F	6[Z]	HTQ	C9-N8	3.44	1.52	1.47
6	C	3[Z]	HTQ	O10-C11	3.45	1.42	1.34
6	D	414	HTQ	C16-C14	3.45	1.44	1.39
6	E	5[Z]	HTQ	C9-N8	3.45	1.52	1.47
6	C	3[Y]	HTQ	C4-C5	3.46	1.60	1.53
6	D	4[Z]	HTQ	C9-N8	3.46	1.52	1.47
6	C	313	HTQ	C9-N8	3.47	1.52	1.47
6	E	515	HTQ	C9-N8	3.57	1.52	1.47

All (66) bond angle outliers are listed below:

Mol	Chain	Res	Type	Atoms	Z	Observed(°)	Ideal(°)
4	A	182	SIA	C7-C6-C5	-2.83	110.03	114.32
2	A	179	NAG	C2-N2-C7	-2.41	119.94	123.04
2	E	579	NAG	C2-N2-C7	-2.29	120.10	123.04
3	B	279	NDG	C2-N2-C7	-2.21	120.20	123.04
2	E	580	NAG	C2-N2-C7	-2.19	120.22	123.04
2	C	379	NAG	C2-N2-C7	-2.15	120.28	123.04
3	F	679	NDG	C2-N2-C7	-2.11	120.32	123.04
6	A	111	HTQ	C2-C1-N8	-2.09	104.71	107.64
6	C	3[Z]	HTQ	C2-C1-N8	-2.03	104.80	107.64
6	C	3[Y]	HTQ	C2-C1-N8	-2.02	104.82	107.64
3	D	479	NDG	C2-N2-C7	-2.01	120.45	123.04

Continued on next page...

Continued from previous page...

Mol	Chain	Res	Type	Atoms	Z	Observed(°)	Ideal(°)
6	E	5[Y]	HTQ	C2-C1-C7	2.09	114.56	112.61
6	A	1[Y]	HTQ	C3-C4-C5	2.13	115.98	112.65
6	F	6[Z]	HTQ	C3-C4-C5	2.16	116.03	112.65
6	E	5[Y]	HTQ	C3-C4-C5	2.22	116.12	112.65
6	D	4[Y]	HTQ	C2-C1-C7	2.25	114.71	112.61
6	B	2[Z]	HTQ	C3-C4-C5	2.29	116.23	112.65
6	D	414	HTQ	O10-C11-O12	2.34	128.69	123.89
6	B	212	HTQ	C3-C4-C5	2.46	116.50	112.65
4	A	182	SIA	O6-C6-C7	2.47	110.99	107.26
6	C	3[Z]	HTQ	C2-C1-C7	2.47	114.92	112.61
6	A	111	HTQ	C2-C1-C7	2.47	114.92	112.61
6	C	3[Y]	HTQ	C2-C1-C7	2.48	114.93	112.61
6	C	3[Z]	HTQ	C3-C4-C5	2.51	116.57	112.65
6	D	4[Y]	HTQ	C3-C4-C5	2.52	116.58	112.65
6	C	3[Y]	HTQ	C3-C4-C5	2.54	116.62	112.65
6	A	111	HTQ	C3-C4-C5	2.55	116.64	112.65
6	D	414	HTQ	O10-C3-C4	2.64	114.37	107.80
6	A	1[Z]	HTQ	O10-C3-C2	2.82	114.83	107.80
6	C	3[Y]	HTQ	C5-N8-C1	2.92	103.40	100.86
6	D	4[Y]	HTQ	C5-N8-C1	2.93	103.42	100.86
6	F	6[Z]	HTQ	C5-N8-C1	2.99	103.46	100.86
6	A	1[Y]	HTQ	C5-N8-C1	3.00	103.47	100.86
6	B	2[Y]	HTQ	C5-N8-C1	3.03	103.50	100.86
6	B	2[Z]	HTQ	C5-N8-C1	3.04	103.51	100.86
6	D	4[Z]	HTQ	C5-N8-C1	3.04	103.51	100.86
6	F	6[Y]	HTQ	C5-N8-C1	3.05	103.51	100.86
6	A	1[Z]	HTQ	C5-N8-C1	3.05	103.52	100.86
6	C	3[Z]	HTQ	C5-N8-C1	3.06	103.53	100.86
6	C	313	HTQ	C5-N8-C1	3.08	103.54	100.86
6	E	515	HTQ	C5-N8-C1	3.08	103.54	100.86
6	E	5[Y]	HTQ	C5-N8-C1	3.10	103.56	100.86
6	D	414	HTQ	C5-N8-C1	3.14	103.59	100.86
6	B	212	HTQ	C5-N8-C1	3.14	103.60	100.86
6	E	5[Z]	HTQ	C5-N8-C1	3.15	103.60	100.86
6	A	111	HTQ	C5-N8-C1	3.15	103.61	100.86
4	B	282	SIA	O6-C6-C7	3.20	112.10	107.26
6	F	616	HTQ	C5-N8-C1	3.21	103.66	100.86
6	E	5[Y]	HTQ	C3-O10-C11	4.29	124.12	117.67
6	B	2[Y]	HTQ	C3-O10-C11	4.59	124.57	117.67
6	D	4[Y]	HTQ	C3-O10-C11	4.73	124.78	117.67
6	C	3[Z]	HTQ	C3-O10-C11	4.78	124.85	117.67
6	B	2[Z]	HTQ	C3-O10-C11	4.87	124.98	117.67

Continued on next page...

Continued from previous page...

Mol	Chain	Res	Type	Atoms	Z	Observed(°)	Ideal(°)
6	D	4[Z]	HTQ	C3-O10-C11	5.07	125.29	117.67
6	C	3[Y]	HTQ	C3-O10-C11	5.50	125.94	117.67
6	F	6[Y]	HTQ	C3-O10-C11	5.57	126.03	117.67
6	F	616	HTQ	C3-O10-C11	5.81	126.40	117.67
6	C	313	HTQ	C3-O10-C11	6.13	126.88	117.67
6	E	515	HTQ	C3-O10-C11	6.24	127.03	117.67
6	A	1[Y]	HTQ	C3-O10-C11	6.30	127.13	117.67
6	F	6[Z]	HTQ	C3-O10-C11	6.35	127.21	117.67
6	B	212	HTQ	C3-O10-C11	6.57	127.54	117.67
6	E	5[Z]	HTQ	C3-O10-C11	6.75	127.81	117.67
6	A	111	HTQ	C3-O10-C11	6.96	128.12	117.67
6	A	1[Z]	HTQ	C3-O10-C11	8.49	130.41	117.67
6	D	414	HTQ	C3-O10-C11	9.90	132.54	117.67

There are no chirality outliers.

All (1) torsion outliers are listed below:

Mol	Chain	Res	Type	Atoms
3	F	679	NDG	O7-C7-N2-C2

There are no ring outliers.

26 monomers are involved in 122 short contacts:

Mol	Chain	Res	Type	Clashes	Symm-Clashes
6	A	1[Y]	HTQ	4	0
6	A	1[Z]	HTQ	4	0
6	A	111	HTQ	13	0
4	A	182	SIA	5	0
6	B	2[Y]	HTQ	4	0
6	B	2[Z]	HTQ	1	0
6	B	212	HTQ	9	0
3	B	279	NDG	3	0
4	B	282	SIA	17	0
6	C	3[Y]	HTQ	4	0
6	C	3[Z]	HTQ	4	0
6	C	313	HTQ	3	0
6	D	4[Y]	HTQ	2	0
6	D	4[Z]	HTQ	3	0
6	D	414	HTQ	7	0
3	D	479	NDG	2	0
6	E	5[Y]	HTQ	2	0

Continued on next page...

Continued from previous page...

Mol	Chain	Res	Type	Clashes	Symm-Clashes
6	E	5[Z]	HTQ	1	0
6	E	515	HTQ	12	0
2	E	579	NAG	2	0
2	E	580	NAG	2	0
6	F	6[Y]	HTQ	3	0
6	F	6[Z]	HTQ	3	0
6	F	616	HTQ	7	0
3	F	679	NDG	3	0
4	F	682	SIA	5	0

5.7 Other polymers [i](#)

There are no such residues in this entry.

5.8 Polymer linkage issues [i](#)

There are no chain breaks in this entry.

6 Fit of model and data ⓘ

6.1 Protein, DNA and RNA chains ⓘ

EDS was not executed - this section will therefore be empty.

6.2 Non-standard residues in protein, DNA, RNA chains ⓘ

EDS was not executed - this section will therefore be empty.

6.3 Carbohydrates ⓘ

EDS was not executed - this section will therefore be empty.

6.4 Ligands ⓘ

EDS was not executed - this section will therefore be empty.

6.5 Other polymers ⓘ

EDS was not executed - this section will therefore be empty.