



Full wwPDB X-ray Structure Validation Report ⓘ

Feb 1, 2016 – 10:44 AM GMT

PDB ID : 3MYK
Title : Insights into the Importance of Hydrogen Bonding in the Gamma-Phosphate Binding Pocket of Myosin: Structural and Functional Studies of Ser236
Authors : Frye, J.J.; Klenchin, V.A.; Bagshaw, C.R.; Rayment, I.
Deposited on : 2010-05-10
Resolution : 1.84 Å(reported)

This is a Full wwPDB X-ray Structure Validation Report for a publicly released PDB entry.
We welcome your comments at validation@mail.wwpdb.org
A user guide is available at
<http://wwpdb.org/validation/2016/XrayValidationReportHelp>
with specific help available everywhere you see the ⓘ symbol.

The following versions of software and data (see [references ⓘ](#)) were used in the production of this report:

MolProbity : 4.02b-467
Mogul : 1.7 (RC4), CSD as536be (2015)
Xtriage (Phenix) : 1.9-1692
EDS : rb-20026688
Percentile statistics : 20151230.v01 (using entries in the PDB archive December 30th 2015)
Refmac : 5.8.0135
CCP4 : 6.5.0
Ideal geometry (proteins) : Engh & Huber (2001)
Ideal geometry (DNA, RNA) : Parkinson et al. (1996)
Validation Pipeline (wwPDB-VP) : trunk26865

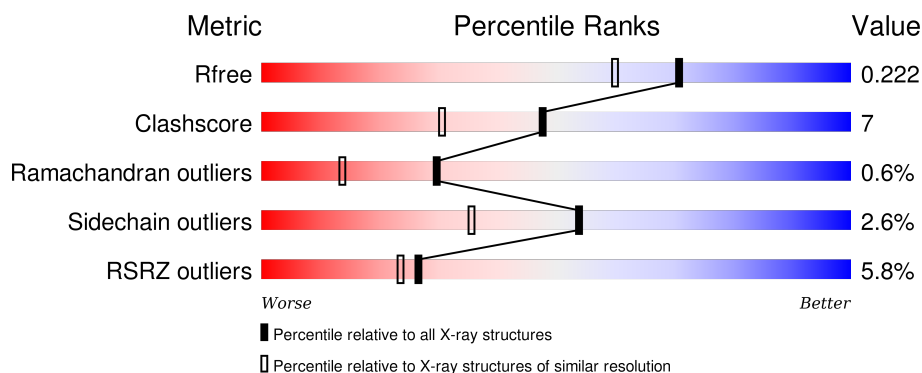
1 Overall quality at a glance

The following experimental techniques were used to determine the structure:

X-RAY DIFFRACTION


The reported resolution of this entry is 1.84 Å.

Percentile scores (ranging between 0-100) for global validation metrics of the entry are shown in the following graphic. The table shows the number of entries on which the scores are based.



Metric	Whole archive (#Entries)	Similar resolution (#Entries, resolution range(Å))
R_{free}	91344	2634 (1.86-1.82)
Clashscore	102246	2862 (1.86-1.82)
Ramachandran outliers	100387	2831 (1.86-1.82)
Sidechain outliers	100360	2832 (1.86-1.82)
RSRZ outliers	91569	2639 (1.86-1.82)

The table below summarises the geometric issues observed across the polymeric chains and their fit to the electron density. The red, orange, yellow and green segments on the lower bar indicate the fraction of residues that contain outliers for ≥ 3 , 2, 1 and 0 types of geometric quality criteria. A grey segment represents the fraction of residues that are not modelled. The numeric value for each fraction is indicated below the corresponding segment, with a dot representing fractions $\leq 5\%$. The upper red bar (where present) indicates the fraction of residues that have poor fit to the electron density. The numeric value is given above the bar.

Mol	Chain	Length	Quality of chain
1	X	762	

2 Entry composition [i](#)

There are 5 unique types of molecules in this entry. The entry contains 6061 atoms, of which 0 are hydrogens and 0 are deuteriums.

In the tables below, the ZeroOcc column contains the number of atoms modelled with zero occupancy, the AltConf column contains the number of residues with at least one atom in alternate conformation and the Trace column contains the number of residues modelled with at most 2 atoms.

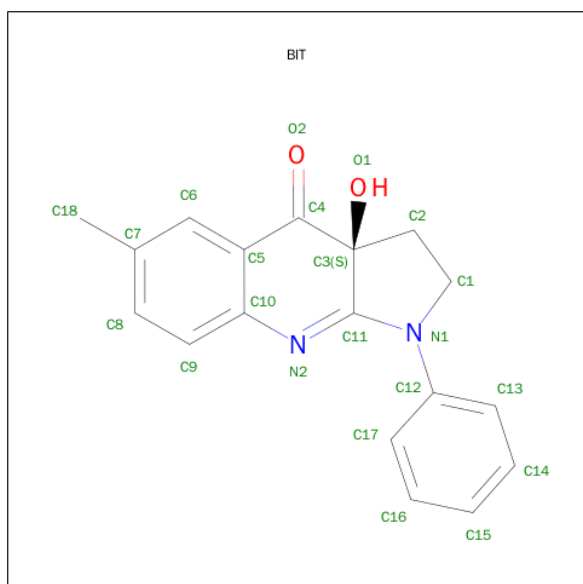
- Molecule 1 is a protein called Myosin-2 heavy chain.

Mol	Chain	Residues	Atoms					ZeroOcc	AltConf	Trace
			Total	C	N	O	S			
1	X	706	5562	3550	938	1058	16	0	4	0

There are 5 discrepancies between the modelled and reference sequences:

Chain	Residue	Modelled	Actual	Comment	Reference
X	1	GLY	-	EXPRESSION TAG	UNP P08799
X	236	ALA	SER	ENGINEERED MUTATION	UNP P08799
X	760	LEU	-	EXPRESSION TAG	UNP P08799
X	761	PRO	-	EXPRESSION TAG	UNP P08799
X	762	ASN	-	EXPRESSION TAG	UNP P08799

- Molecule 2 is (-)-1-PHENYL-1,2,3,4-TETRAHYDRO-4-HYDROXYPYRROLO[2,3-B]-7-METHYLQUINOLIN-4-ONE (three-letter code: BIT) (formula: $C_{18}H_{16}N_2O_2$).

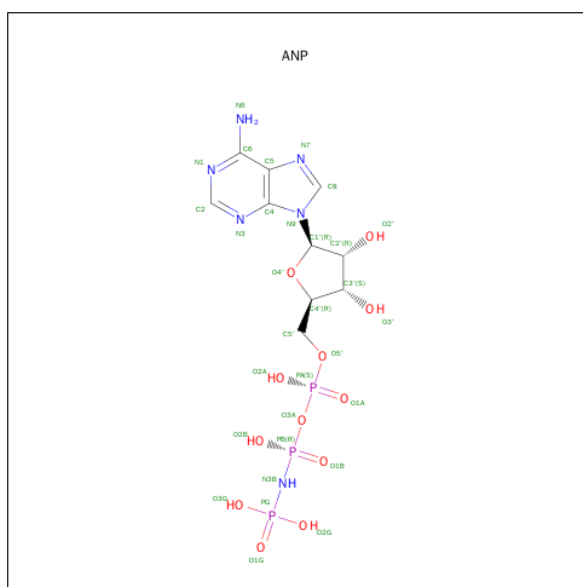


Mol	Chain	Residues	Atoms				ZeroOcc	AltConf
2	X	1	Total	C	N	O	0	0
			22	18	2	2		

- Molecule 3 is MAGNESIUM ION (three-letter code: MG) (formula: Mg).

Mol	Chain	Residues	Atoms		ZeroOcc	AltConf
3	X	1	Total	Mg	0	0
			1	1		

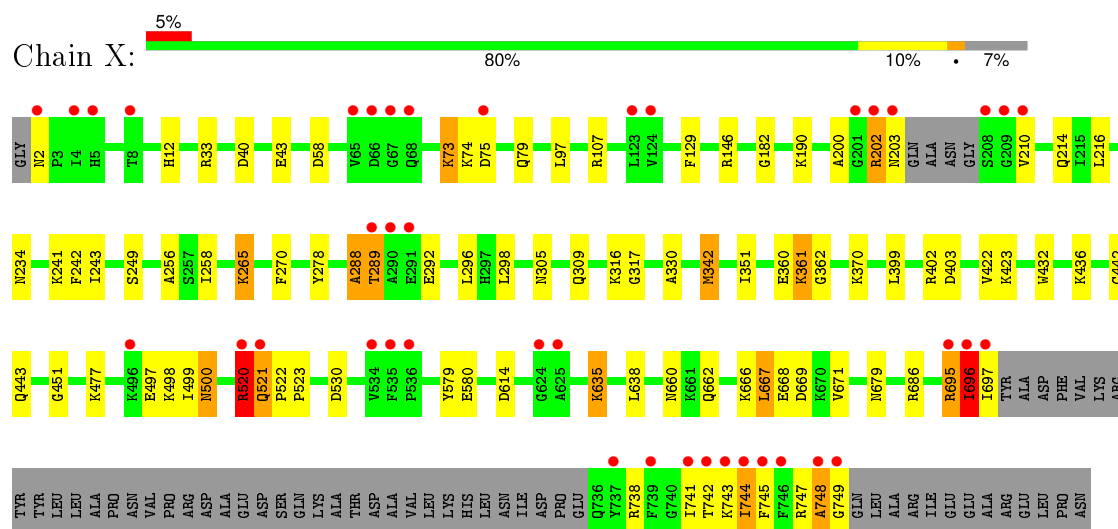
- Molecule 4 is PHOSPHOAMINOPHOSPHONIC ACID-ADENYLATE ESTER (three-letter code: ANP) (formula: $C_{10}H_{17}N_6O_{12}P_3$).



3 Residue-property plots [i](#)

These plots are drawn for all protein, RNA and DNA chains in the entry. The first graphic for a chain summarises the proportions of errors displayed in the second graphic. The second graphic shows the sequence view annotated by issues in geometry and electron density. Residues are color-coded according to the number of geometric quality criteria for which they contain at least one outlier: green = 0, yellow = 1, orange = 2 and red = 3 or more. A red dot above a residue indicates a poor fit to the electron density ($RSRZ > 2$). Stretches of 2 or more consecutive residues without any outlier are shown as a green connector. Residues present in the sample, but not in the model, are shown in grey.

- Molecule 1: Myosin-2 heavy chain



4 Data and refinement statistics

Property	Value	Source
Space group	C 2 2 21	Depositor
Cell constants a, b, c, α , β , γ	88.00Å 147.02Å 153.43Å 90.00° 90.00° 90.00°	Depositor
Resolution (Å)	28.91 – 1.84 28.91 – 1.84	Depositor EDS
% Data completeness (in resolution range)	98.6 (28.91-1.84) 98.7 (28.91-1.84)	Depositor EDS
R_{merge}	0.05	Depositor
R_{sym}	0.05	Depositor
$\langle I/\sigma(I) \rangle$ ¹	4.64 (at 1.84Å)	Xtriage
Refinement program	REFMAC 5.5.0066	Depositor
R, R_{free}	0.193 , 0.230 0.188 , 0.222	Depositor DCC
R_{free} test set	4234 reflections (5.26%)	DCC
Wilson B-factor (Å ²)	23.1	Xtriage
Anisotropy	0.519	Xtriage
Bulk solvent k_{sol} (e/Å ³), B_{sol} (Å ²)	0.39 , 56.8	EDS
Estimated twinning fraction	0.011 for 1/2*h-1/2*k,-3/2*h-1/2*k,-l 0.020 for 1/2*h+1/2*k,3/2*h-1/2*k,-l	Xtriage
L-test for twinning ²	$\langle L \rangle = 0.49$, $\langle L^2 \rangle = 0.32$	Xtriage
Outliers	1 of 84758 reflections (0.001%)	Xtriage
F_o, F_c correlation	0.95	EDS
Total number of atoms	6061	wwPDB-VP
Average B, all atoms (Å ²)	27.0	wwPDB-VP

Xtriage's analysis on translational NCS is as follows: *The largest off-origin peak in the Patterson function is 3.40% of the height of the origin peak. No significant pseudotranslation is detected.*

¹Intensities estimated from amplitudes.

²Theoretical values of $\langle |L| \rangle$, $\langle L^2 \rangle$ for acentric reflections are 0.5, 0.375 respectively for untwinned datasets, and 0.333, 0.2 for perfectly twinned datasets.

5 Model quality

5.1 Standard geometry

Bond lengths and bond angles in the following residue types are not validated in this section: MG, ANP, BIT

The Z score for a bond length (or angle) is the number of standard deviations the observed value is removed from the expected value. A bond length (or angle) with $|Z| > 5$ is considered an outlier worth inspection. RMSZ is the root-mean-square of all Z scores of the bond lengths (or angles).

Mol	Chain	Bond lengths		Bond angles	
		RMSZ	$\# Z > 5$	RMSZ	$\# Z > 5$
1	X	1.18	6/5682 (0.1%)	0.99	11/7673 (0.1%)

Chiral center outliers are detected by calculating the chiral volume of a chiral center and verifying if the center is modelled as a planar moiety or with the opposite hand. A planarity outlier is detected by checking planarity of atoms in a peptide group, atoms in a mainchain group or atoms of a sidechain that are expected to be planar.

Mol	Chain	#Chirality outliers	#Planarity outliers
1	X	0	4

All (6) bond length outliers are listed below:

Mol	Chain	Res	Type	Atoms	Z	Observed(Å)	Ideal(Å)
1	X	579	TYR	CD1-CE1	7.42	1.50	1.39
1	X	278	TYR	CD2-CE2	6.41	1.49	1.39
1	X	265	LYS	CE-NZ	5.62	1.63	1.49
1	X	580	GLU	CB-CG	5.60	1.62	1.52
1	X	129	PHE	CE2-CZ	5.56	1.48	1.37
1	X	330	ALA	CA-CB	5.39	1.63	1.52

All (11) bond angle outliers are listed below:

Mol	Chain	Res	Type	Atoms	Z	Observed(°)	Ideal(°)
1	X	667	LEU	CB-CG-CD1	6.98	122.87	111.00
1	X	402	ARG	NE-CZ-NH2	-6.98	116.81	120.30
1	X	107	ARG	NE-CZ-NH1	6.75	123.68	120.30
1	X	520	ARG	N-CA-C	6.38	128.22	111.00
1	X	402	ARG	NE-CZ-NH1	6.21	123.41	120.30
1	X	521	GLN	C-N-CD	-5.99	107.42	120.60
1	X	40	ASP	CB-CG-OD2	-5.80	113.08	118.30

Continued on next page...

Continued from previous page...

Mol	Chain	Res	Type	Atoms	Z	Observed(°)	Ideal(°)
1	X	669	ASP	CB-CG-OD1	-5.58	113.28	118.30
1	X	40	ASP	CB-CG-OD1	5.53	123.27	118.30
1	X	521	GLN	N-CA-C	5.47	125.77	111.00
1	X	635	LYS	CD-CE-NZ	5.43	124.18	111.70

There are no chirality outliers.

All (4) planarity outliers are listed below:

Mol	Chain	Res	Type	Group
1	X	200	ALA	Peptide
1	X	288	ALA	Peptide
1	X	520	ARG	Peptide
1	X	696	ILE	Peptide

5.2 Too-close contacts ⓘ

In the following table, the Non-H and H(model) columns list the number of non-hydrogen atoms and hydrogen atoms in the chain respectively. The H(added) column lists the number of hydrogen atoms added and optimized by MolProbity. The Clashes column lists the number of clashes within the asymmetric unit, whereas Symm-Clashes lists symmetry related clashes.

Mol	Chain	Non-H	H(model)	H(added)	Clashes	Symm-Clashes
1	X	5562	0	5386	82	0
2	X	22	0	16	0	0
3	X	1	0	0	0	0
4	X	31	0	13	2	0
5	X	445	0	0	8	2
All	All	6061	0	5415	82	2

The all-atom clashscore is defined as the number of clashes found per 1000 atoms (including hydrogen atoms). The all-atom clashscore for this structure is 7.

All (82) close contacts within the same asymmetric unit are listed below, sorted by their clash magnitude.

Atom-1	Atom-2	Interatomic distance (Å)	Clash overlap (Å)
1:X:748:ALA:CB	1:X:749:GLY:HA2	1.57	1.30
1:X:748:ALA:HB3	1:X:749:GLY:HA2	1.30	1.05
1:X:748:ALA:HB1	1:X:749:GLY:HA2	1.34	1.05
1:X:288:ALA:HA	1:X:289:THR:HG22	1.42	1.01

Continued on next page...

Continued from previous page...

Atom-1	Atom-2	Interatomic distance (Å)	Clash overlap (Å)
1:X:748:ALA:CB	1:X:749:GLY:CA	2.43	0.96
1:X:2:ASN:N	5:X:1474:HOH:O	1.99	0.95
1:X:182:GLY:H	4:X:999:ANP:HNB1	1.14	0.94
1:X:696:ILE:HG22	1:X:697:ILE:HA	1.50	0.91
1:X:696:ILE:O	1:X:744:ILE:HD13	1.70	0.91
1:X:73:LYS:HE2	1:X:75:ASP:H	1.34	0.90
1:X:73:LYS:HE2	1:X:74:LYS:N	1.91	0.84
1:X:748:ALA:HB1	1:X:749:GLY:CA	2.05	0.84
1:X:288:ALA:HA	1:X:289:THR:CG2	2.07	0.83
1:X:58:ASP:O	1:X:73:LYS:HE3	1.76	0.83
1:X:289:THR:HG21	1:X:292:GLU:OE1	1.79	0.82
1:X:497:GLU:HG3	1:X:745:PHE:CZ	2.14	0.81
1:X:498:LYS:HB2	1:X:741:ILE:CD1	2.12	0.80
1:X:520:ARG:CD	5:X:1541:HOH:O	2.30	0.79
1:X:289:THR:HG23	1:X:292:GLU:HB2	1.64	0.77
1:X:520:ARG:HD2	5:X:1541:HOH:O	1.82	0.77
1:X:265:LYS:HE3	1:X:423:LYS:HB3	1.67	0.77
1:X:497:GLU:HG3	1:X:745:PHE:HZ	1.46	0.77
1:X:289:THR:HG21	1:X:292:GLU:CD	2.07	0.76
1:X:73:LYS:CE	1:X:75:ASP:H	2.01	0.73
1:X:289:THR:CG2	1:X:292:GLU:HB2	2.18	0.73
1:X:361:LYS:HE3	1:X:362:GLY:O	1.89	0.72
1:X:234:ASN:H	1:X:662:GLN:HE22	1.37	0.72
1:X:520:ARG:NE	5:X:1541:HOH:O	2.21	0.72
1:X:43:GLU:HB2	5:X:1355:HOH:O	1.90	0.70
1:X:73:LYS:HE2	1:X:75:ASP:N	2.07	0.69
1:X:498:LYS:HB2	1:X:741:ILE:HD12	1.74	0.69
1:X:316:LYS:HD2	1:X:317:GLY:N	2.10	0.67
1:X:342:MET:HA	1:X:342:MET:HE3	1.77	0.67
1:X:33:ARG:HH21	1:X:79:GLN:HE22	1.42	0.66
1:X:498:LYS:HB2	1:X:741:ILE:HD11	1.77	0.65
1:X:342:MET:HE2	1:X:342:MET:O	1.98	0.64
1:X:696:ILE:CG2	1:X:697:ILE:HA	2.25	0.63
1:X:360:GLU:HG3	1:X:370:LYS:HE2	1.79	0.63
1:X:747:ARG:HG3	5:X:1535:HOH:O	1.98	0.62
1:X:73:LYS:HD3	1:X:75:ASP:HB2	1.81	0.61
1:X:342:MET:O	1:X:342:MET:CE	2.51	0.59
1:X:243:ILE:CD1	1:X:258:ILE:HG12	2.32	0.59
1:X:289:THR:HG23	1:X:292:GLU:CB	2.33	0.58
1:X:243:ILE:HD12	1:X:258:ILE:HG12	1.85	0.57
1:X:614:ASP:OD1	1:X:614:ASP:C	2.43	0.57

Continued on next page...

Continued from previous page...

Atom-1	Atom-2	Interatomic distance (Å)	Clash overlap (Å)
1:X:499:ILE:HB	1:X:738:ARG:HB3	1.87	0.56
1:X:288:ALA:CA	1:X:289:THR:CG2	2.81	0.55
1:X:270:PHE:HA	1:X:309:GLN:HE22	1.74	0.53
1:X:202:ARG:O	1:X:203:ASN:O	2.27	0.52
1:X:477:LYS:HG3	1:X:638:LEU:HD21	1.92	0.52
1:X:741:ILE:HG22	1:X:742:THR:HG23	1.92	0.51
1:X:748:ALA:HB3	1:X:749:GLY:CA	2.20	0.51
1:X:666:LYS:HE2	1:X:668:GLU:OE2	2.12	0.50
1:X:697:ILE:H	1:X:743:LYS:HA	1.77	0.50
1:X:497:GLU:HG3	1:X:745:PHE:CE1	2.47	0.49
1:X:432:TRP:CZ2	1:X:436:LYS:HE2	2.48	0.49
1:X:696:ILE:O	1:X:744:ILE:CD1	2.51	0.49
1:X:288:ALA:HB1	1:X:289:THR:HG23	1.96	0.48
1:X:747:ARG:CG	1:X:748:ALA:N	2.77	0.47
1:X:305[A]:ASN:ND2	5:X:1323:HOH:O	2.46	0.47
1:X:499:ILE:O	1:X:500:ASN:O	2.32	0.47
1:X:289:THR:CG2	1:X:292:GLU:CB	2.91	0.47
1:X:256:ALA:O	1:X:442:CYS:HB2	2.18	0.44
1:X:296:LEU:HB2	1:X:298:LEU:HG	2.00	0.44
1:X:73:LYS:CE	1:X:74:LYS:N	2.74	0.43
1:X:97:LEU:CD2	1:X:686:ARG:HG2	2.48	0.43
1:X:499:ILE:HB	1:X:738:ARG:CB	2.47	0.43
1:X:242:PHE:CZ	1:X:451:GLY:HA3	2.53	0.43
1:X:530:ASP:OD2	1:X:635:LYS:NZ	2.51	0.43
1:X:351:ILE:HG23	1:X:422:VAL:HG13	2.01	0.43
1:X:399:LEU:HA	1:X:403:ASP:O	2.19	0.41
1:X:316:LYS:HD2	1:X:317:GLY:H	1.85	0.41
1:X:660[B]:ASN:HD21	1:X:671:VAL:HG22	1.85	0.41
1:X:522:PRO:HA	1:X:523:PRO:HD3	1.90	0.41
1:X:747:ARG:HG2	1:X:748:ALA:N	2.35	0.41
1:X:182:GLY:N	4:X:999:ANP:HNB1	1.98	0.41
1:X:190:LYS:HG3	5:X:1421:HOH:O	2.21	0.41
1:X:241:LYS:HD2	1:X:243:ILE:HD11	2.02	0.41
1:X:288:ALA:CA	1:X:289:THR:HG22	2.30	0.41
1:X:73:LYS:HE2	1:X:74:LYS:H	1.81	0.40
1:X:210:VAL:O	1:X:214:GLN:HG3	2.21	0.40
1:X:695:ARG:C	1:X:696:ILE:HG12	2.41	0.40

All (2) symmetry-related close contacts are listed below. The label for Atom-2 includes the symmetry operator and encoded unit-cell translations to be applied.

Atom-1	Atom-2	Interatomic distance (Å)	Clash overlap (Å)
5:X:1518:HOH:O	5:X:1518:HOH:O[3_654]	1.99	0.21
5:X:1303:HOH:O	5:X:1303:HOH:O[3_654]	2.05	0.15

5.3 Torsion angles [i](#)

5.3.1 Protein backbone [i](#)

In the following table, the Percentiles column shows the percent Ramachandran outliers of the chain as a percentile score with respect to all X-ray entries followed by that with respect to entries of similar resolution.

The Analysed column shows the number of residues for which the backbone conformation was analysed, and the total number of residues.

Mol	Chain	Analysed	Favoured	Allowed	Outliers	Percentiles
1	X	704/762 (92%)	686 (97%)	14 (2%)	4 (1%)	30 14

All (4) Ramachandran outliers are listed below:

Mol	Chain	Res	Type
1	X	202	ARG
1	X	521	GLN
1	X	748	ALA
1	X	500	ASN

5.3.2 Protein sidechains [i](#)

In the following table, the Percentiles column shows the percent sidechain outliers of the chain as a percentile score with respect to all X-ray entries followed by that with respect to entries of similar resolution.

The Analysed column shows the number of residues for which the sidechain conformation was analysed, and the total number of residues.

Mol	Chain	Analysed	Rotameric	Outliers	Percentiles
1	X	582/664 (88%)	567 (97%)	15 (3%)	54 35

All (15) residues with a non-rotameric sidechain are listed below:

Mol	Chain	Res	Type
1	X	12	HIS

Continued on next page...

Continued from previous page...

Mol	Chain	Res	Type
1	X	73	LYS
1	X	146	ARG
1	X	216	LEU
1	X	249	SER
1	X	289	THR
1	X	342	MET
1	X	361	LYS
1	X	443	GLN
1	X	520	ARG
1	X	667	LEU
1	X	679	ASN
1	X	695	ARG
1	X	696	ILE
1	X	744	ILE

Some sidechains can be flipped to improve hydrogen bonding and reduce clashes. All (12) such sidechains are listed below:

Mol	Chain	Res	Type
1	X	79	GLN
1	X	234	ASN
1	X	283	GLN
1	X	309	GLN
1	X	439	ASN
1	X	500	ASN
1	X	532	GLN
1	X	582	GLN
1	X	594	GLN
1	X	606	ASN
1	X	616	ASN
1	X	662	GLN

5.3.3 RNA ⓘ

There are no RNA molecules in this entry.

5.4 Non-standard residues in protein, DNA, RNA chains ⓘ

There are no non-standard protein/DNA/RNA residues in this entry.

5.5 Carbohydrates [i](#)

There are no carbohydrates in this entry.

5.6 Ligand geometry [i](#)

Of 3 ligands modelled in this entry, 1 is monoatomic - leaving 2 for Mogul analysis.

In the following table, the Counts columns list the number of bonds (or angles) for which Mogul statistics could be retrieved, the number of bonds (or angles) that are observed in the model and the number of bonds (or angles) that are defined in the chemical component dictionary. The Link column lists molecule types, if any, to which the group is linked. The Z score for a bond length (or angle) is the number of standard deviations the observed value is removed from the expected value. A bond length (or angle) with $|Z| > 2$ is considered an outlier worth inspection. RMSZ is the root-mean-square of all Z scores of the bond lengths (or angles).

Mol	Type	Chain	Res	Link	Bond lengths			Bond angles		
					Counts	RMSZ	$\# Z > 2$	Counts	RMSZ	$\# Z > 2$
2	BIT	X	800	-	23,25,25	2.64	7 (30%)	27,38,38	2.47	12 (44%)
4	ANP	X	999	3	27,33,33	2.09	8 (29%)	30,52,52	2.32	8 (26%)

In the following table, the Chirals column lists the number of chiral outliers, the number of chiral centers analysed, the number of these observed in the model and the number defined in the chemical component dictionary. Similar counts are reported in the Torsion and Rings columns. '-' means no outliers of that kind were identified.

Mol	Type	Chain	Res	Link	Chirals	Torsions	Rings
2	BIT	X	800	-	-	0/4/34/34	0/3/4/4
4	ANP	X	999	3	-	0/12/38/38	0/3/3/3

All (15) bond length outliers are listed below:

Mol	Chain	Res	Type	Atoms	Z	Observed(Å)	Ideal(Å)
2	X	800	BIT	C5-C4	-5.63	1.39	1.48
4	X	999	ANP	PB-O2B	-2.13	1.50	1.56
2	X	800	BIT	C8-C7	2.14	1.44	1.38
4	X	999	ANP	C8-N7	2.48	1.39	1.34
4	X	999	ANP	C5-C4	2.73	1.46	1.40
4	X	999	ANP	C2-N3	2.95	1.37	1.32
4	X	999	ANP	O4'-C1'	3.14	1.45	1.41
4	X	999	ANP	PB-O1B	3.15	1.49	1.46
2	X	800	BIT	C5-C10	3.37	1.44	1.40
2	X	800	BIT	C13-C12	3.40	1.46	1.39
2	X	800	BIT	C9-C8	3.95	1.45	1.38

Continued on next page...

Continued from previous page...

Mol	Chain	Res	Type	Atoms	Z	Observed(Å)	Ideal(Å)
4	X	999	ANP	PB-O3A	3.97	1.64	1.59
2	X	800	BIT	O1-C3	5.35	1.51	1.42
2	X	800	BIT	C11-N2	6.29	1.36	1.28
4	X	999	ANP	PG-O1G	6.39	1.53	1.46

All (20) bond angle outliers are listed below:

Mol	Chain	Res	Type	Atoms	Z	Observed(°)	Ideal(°)
4	X	999	ANP	N3-C2-N1	-8.74	122.20	128.89
2	X	800	BIT	C18-C7-C6	-4.52	114.08	120.95
2	X	800	BIT	C9-C8-C7	-4.32	115.58	121.39
2	X	800	BIT	C13-C12-N1	-3.58	114.87	120.17
4	X	999	ANP	C4'-O4'-C1'	-3.37	106.02	109.72
2	X	800	BIT	C5-C6-C7	-2.59	117.57	121.70
2	X	800	BIT	C9-C10-N2	-2.50	114.93	118.55
4	X	999	ANP	C2'-C1'-N9	-2.45	110.55	114.29
2	X	800	BIT	C6-C5-C10	-2.12	117.91	120.07
4	X	999	ANP	C1'-N9-C4	-2.07	123.83	126.94
4	X	999	ANP	O1G-PG-N3B	-2.06	108.74	111.90
2	X	800	BIT	C1-N1-C11	-2.02	109.48	112.70
2	X	800	BIT	O2-C4-C5	2.85	126.74	122.29
4	X	999	ANP	C2-N1-C6	3.09	124.28	118.77
2	X	800	BIT	C10-N2-C11	3.16	121.39	116.03
4	X	999	ANP	O2B-PB-O1B	3.46	117.21	110.00
2	X	800	BIT	C17-C12-N1	3.66	125.58	120.17
4	X	999	ANP	O1B-PB-N3B	4.00	118.04	111.90
2	X	800	BIT	C9-C10-C5	4.68	124.78	119.19
2	X	800	BIT	C8-C7-C6	5.12	126.38	117.95

There are no chirality outliers.

There are no torsion outliers.

There are no ring outliers.

1 monomer is involved in 2 short contacts:

Mol	Chain	Res	Type	Clashes	Symm-Clashes
4	X	999	ANP	2	0

5.7 Other polymers ⓘ

There are no such residues in this entry.

5.8 Polymer linkage issues

There are no chain breaks in this entry.

6 Fit of model and data ⓘ

6.1 Protein, DNA and RNA chains ⓘ

In the following table, the column labelled ‘#RSRZ> 2’ contains the number (and percentage) of RSRZ outliers, followed by percent RSRZ outliers for the chain as percentile scores relative to all X-ray entries and entries of similar resolution. The OWAB column contains the minimum, median, 95th percentile and maximum values of the occupancy-weighted average B-factor per residue. The column labelled ‘Q< 0.9’ lists the number of (and percentage) of residues with an average occupancy less than 0.9.

Mol	Chain	Analysed	<RSRZ>	#RSRZ>2	OWAB(Å ²)	Q<0.9
1	X	706/762 (92%)	0.12	41 (5%) 26 23	13, 25, 49, 66	0

All (41) RSRZ outliers are listed below:

Mol	Chain	Res	Type	RSRZ
1	X	746	PHE	7.7
1	X	696	ILE	7.6
1	X	744	ILE	6.9
1	X	67	GLY	6.8
1	X	741	ILE	6.8
1	X	208	SER	6.0
1	X	697	ILE	5.9
1	X	749	GLY	4.9
1	X	203	ASN	4.6
1	X	742	THR	4.4
1	X	209	GLY	4.4
1	X	289	THR	4.1
1	X	202	ARG	4.1
1	X	748	ALA	3.8
1	X	65	VAL	3.8
1	X	291	GLU	3.7
1	X	66	ASP	3.6
1	X	496	LYS	3.2
1	X	745	PHE	3.1
1	X	520	ARG	3.1
1	X	68	GLN	3.0
1	X	290	ALA	2.9
1	X	625	ALA	2.9
1	X	535	PHE	2.9
1	X	5	HIS	2.8
1	X	536	PRO	2.8
1	X	4	ILE	2.7

Continued on next page...

Continued from previous page...

Mol	Chain	Res	Type	RSRZ
1	X	210	VAL	2.7
1	X	737	TYR	2.6
1	X	624	GLY	2.5
1	X	521	GLN	2.4
1	X	201	GLY	2.4
1	X	739	PHE	2.4
1	X	123	LEU	2.3
1	X	695	ARG	2.2
1	X	743	LYS	2.1
1	X	534	VAL	2.1
1	X	2	ASN	2.0
1	X	124	VAL	2.0
1	X	8	THR	2.0
1	X	75	ASP	2.0

6.2 Non-standard residues in protein, DNA, RNA chains [i](#)

There are no non-standard protein/DNA/RNA residues in this entry.

6.3 Carbohydrates [i](#)

There are no carbohydrates in this entry.

6.4 Ligands [i](#)

In the following table, the Atoms column lists the number of modelled atoms in the group and the number defined in the chemical component dictionary. LLDF column lists the quality of electron density of the group with respect to its neighbouring residues in protein, DNA or RNA chains. The B-factors column lists the minimum, median, 95th percentile and maximum values of B factors of atoms in the group. The column labelled 'Q< 0.9' lists the number of atoms with occupancy less than 0.9.

Mol	Type	Chain	Res	Atoms	RSCC	RSR	LLDF	B-factors(Å ²)	Q<0.9
3	MG	X	998	1/1	1.00	0.11	0.15	14,14,14,14	0
2	BIT	X	800	22/22	0.96	0.10	0.09	13,19,21,23	0
4	ANP	X	999	31/31	0.99	0.08	-0.90	12,16,20,21	0

6.5 Other polymers [i](#)

There are no such residues in this entry.