



# wwPDB X-ray Structure Validation Summary Report ⓘ

Feb 1, 2016 – 06:52 PM GMT

PDB ID : 4MY1  
Title : Crystal Structure of the Inosine 5'-monophosphate Dehydrogenase, with a Internal Deletion of CBS Domain from Bacillus anthracis str. Ames complexed with P68  
Authors : Kim, Y.; Makowska-Grzyska, M.; Gu, M.; Anderson, W.F.; Joachimiak, A.; Csgid; Center for Structural Genomics of Infectious Diseases (CSGID)  
Deposited on : 2013-09-26  
Resolution : 2.60 Å(reported)

This is a wwPDB X-ray Structure Validation Summary Report for a publicly released PDB entry.

We welcome your comments at [validation@mail.wwpdb.org](mailto:validation@mail.wwpdb.org)

A user guide is available at

<http://wwpdb.org/validation/2016/XrayValidationReportHelp>

with specific help available everywhere you see the ⓘ symbol.

---

The following versions of software and data (see [references ⓘ](#)) were used in the production of this report:

MolProbity	:	4.02b-467
Mogul	:	1.7 (RC4), CSD as536be (2015)
Xtriage (Phenix)	:	1.9-1692
EDS	:	rb-20026688
Percentile statistics	:	20151230.v01 (using entries in the PDB archive December 30th 2015)
Refmac	:	5.8.0135
CCP4	:	6.5.0
Ideal geometry (proteins)	:	Engh & Huber (2001)
Ideal geometry (DNA, RNA)	:	Parkinson et al. (1996)
Validation Pipeline (wwPDB-VP)	:	trunk26865

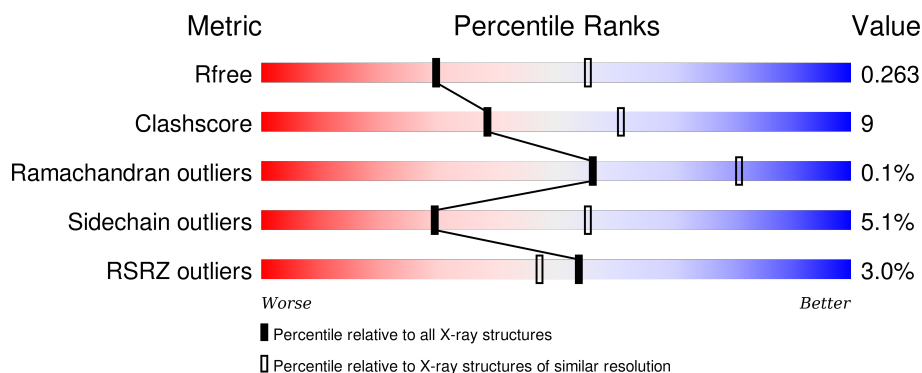
# 1 Overall quality at a glance ⓘ

The following experimental techniques were used to determine the structure:

## *X-RAY DIFFRACTION*

The reported resolution of this entry is 2.60 Å.

Percentile scores (ranging between 0-100) for global validation metrics of the entry are shown in the following graphic. The table shows the number of entries on which the scores are based.



Metric	Whole archive (#Entries)	Similar resolution (#Entries, resolution range(Å))
$R_{free}$	91344	2328 (2.60-2.60)
Clashscore	102246	2679 (2.60-2.60)
Ramachandran outliers	100387	2635 (2.60-2.60)
Sidechain outliers	100360	2635 (2.60-2.60)
RSRZ outliers	91569	2334 (2.60-2.60)

The table below summarises the geometric issues observed across the polymeric chains and their fit to the electron density. The red, orange, yellow and green segments on the lower bar indicate the fraction of residues that contain outliers for  $\geq 3$ , 2, 1 and 0 types of geometric quality criteria. A grey segment represents the fraction of residues that are not modelled. The numeric value for each fraction is indicated below the corresponding segment, with a dot representing fractions  $\leq 5\%$ . The upper red bar (where present) indicates the fraction of residues that have poor fit to the electron density. The numeric value is given above the bar.

Mol	Chain	Length	Quality of chain
1	A	384	<div> <div>69%</div> <div>20%</div> <div>9%</div> </div>
1	B	384	<div> <div>74%</div> <div>16%</div> <div>9%</div> </div>
1	C	384	<div> <div>75%</div> <div>17%</div> <div>8%</div> </div>
1	D	384	<div> <div>70%</div> <div>19%</div> <div>9%</div> </div>
1	E	384	<div> <div>69%</div> <div>20%</div> <div>10%</div> </div>

*Continued on next page...*

*Continued from previous page...*

Mol	Chain	Length	Quality of chain
1	F	384	
1	G	384	
1	H	384	

The following table lists non-polymeric compounds, carbohydrate monomers and non-standard residues in protein, DNA, RNA chains that are outliers for geometric or electron-density-fit criteria:

Mol	Type	Chain	Res	Chirality	Geometry	Clashes	Electron density
3	P68	E	502	-	-	-	X
3	P68	E	503	-	-	-	X

## 2 Entry composition

There are 4 unique types of molecules in this entry. The entry contains 21010 atoms, of which 0 are hydrogens and 0 are deuteriums.

In the tables below, the ZeroOcc column contains the number of atoms modelled with zero occupancy, the AltConf column contains the number of residues with at least one atom in alternate conformation and the Trace column contains the number of residues modelled with at most 2 atoms.

- Molecule 1 is a protein called Inosine-5'-monophosphate dehydrogenase.

Mol	Chain	Residues	Atoms					ZeroOcc	AltConf	Trace
1	A	349	Total	C	N	O	S	0	0	0
			2558	1606	448	488	16			
1	B	351	Total	C	N	O	S	0	0	0
			2568	1611	450	491	16			
1	C	354	Total	C	N	O	S	0	0	0
			2603	1637	455	495	16			
1	D	348	Total	C	N	O	S	0	0	0
			2552	1603	447	486	16			
1	E	347	Total	C	N	O	S	0	0	0
			2541	1594	445	486	16			
1	F	353	Total	C	N	O	S	0	0	0
			2594	1631	453	494	16			
1	G	347	Total	C	N	O	S	0	0	0
			2543	1597	445	485	16			
1	H	349	Total	C	N	O	S	0	0	0
			2558	1606	448	488	16			

There are 208 discrepancies between the modelled and reference sequences:

Chain	Residue	Modelled	Actual	Comment	Reference
A	-23	MET	-	EXPRESSION TAG	UNP Q81W29
A	-22	HIS	-	EXPRESSION TAG	UNP Q81W29
A	-21	HIS	-	EXPRESSION TAG	UNP Q81W29
A	-20	HIS	-	EXPRESSION TAG	UNP Q81W29
A	-19	HIS	-	EXPRESSION TAG	UNP Q81W29
A	-18	HIS	-	EXPRESSION TAG	UNP Q81W29
A	-17	HIS	-	EXPRESSION TAG	UNP Q81W29
A	-16	SER	-	EXPRESSION TAG	UNP Q81W29
A	-15	SER	-	EXPRESSION TAG	UNP Q81W29
A	-14	GLY	-	EXPRESSION TAG	UNP Q81W29
A	-13	VAL	-	EXPRESSION TAG	UNP Q81W29
A	-12	ASP	-	EXPRESSION TAG	UNP Q81W29
A	-11	LEU	-	EXPRESSION TAG	UNP Q81W29

*Continued on next page...*

*Continued from previous page...*

Chain	Residue	Modelled	Actual	Comment	Reference
A	-10	GLY	-	EXPRESSION TAG	UNP Q81W29
A	-9	THR	-	EXPRESSION TAG	UNP Q81W29
A	-8	GLU	-	EXPRESSION TAG	UNP Q81W29
A	-7	ASN	-	EXPRESSION TAG	UNP Q81W29
A	-6	LEU	-	EXPRESSION TAG	UNP Q81W29
A	-5	TYR	-	EXPRESSION TAG	UNP Q81W29
A	-4	PHE	-	EXPRESSION TAG	UNP Q81W29
A	-3	GLN	-	EXPRESSION TAG	UNP Q81W29
A	-2	SER	-	EXPRESSION TAG	UNP Q81W29
A	-1	ASN	-	EXPRESSION TAG	UNP Q81W29
A	0	ALA	-	EXPRESSION TAG	UNP Q81W29
A	92	GLY	-	LINKER	UNP Q81W29
A	220	GLY	-	LINKER	UNP Q81W29
B	-23	MET	-	EXPRESSION TAG	UNP Q81W29
B	-22	HIS	-	EXPRESSION TAG	UNP Q81W29
B	-21	HIS	-	EXPRESSION TAG	UNP Q81W29
B	-20	HIS	-	EXPRESSION TAG	UNP Q81W29
B	-19	HIS	-	EXPRESSION TAG	UNP Q81W29
B	-18	HIS	-	EXPRESSION TAG	UNP Q81W29
B	-17	HIS	-	EXPRESSION TAG	UNP Q81W29
B	-16	SER	-	EXPRESSION TAG	UNP Q81W29
B	-15	SER	-	EXPRESSION TAG	UNP Q81W29
B	-14	GLY	-	EXPRESSION TAG	UNP Q81W29
B	-13	VAL	-	EXPRESSION TAG	UNP Q81W29
B	-12	ASP	-	EXPRESSION TAG	UNP Q81W29
B	-11	LEU	-	EXPRESSION TAG	UNP Q81W29
B	-10	GLY	-	EXPRESSION TAG	UNP Q81W29
B	-9	THR	-	EXPRESSION TAG	UNP Q81W29
B	-8	GLU	-	EXPRESSION TAG	UNP Q81W29
B	-7	ASN	-	EXPRESSION TAG	UNP Q81W29
B	-6	LEU	-	EXPRESSION TAG	UNP Q81W29
B	-5	TYR	-	EXPRESSION TAG	UNP Q81W29
B	-4	PHE	-	EXPRESSION TAG	UNP Q81W29
B	-3	GLN	-	EXPRESSION TAG	UNP Q81W29
B	-2	SER	-	EXPRESSION TAG	UNP Q81W29
B	-1	ASN	-	EXPRESSION TAG	UNP Q81W29
B	0	ALA	-	EXPRESSION TAG	UNP Q81W29
B	92	GLY	-	LINKER	UNP Q81W29
B	220	GLY	-	LINKER	UNP Q81W29
C	-23	MET	-	EXPRESSION TAG	UNP Q81W29
C	-22	HIS	-	EXPRESSION TAG	UNP Q81W29
C	-21	HIS	-	EXPRESSION TAG	UNP Q81W29

*Continued on next page...*

*Continued from previous page...*

Chain	Residue	Modelled	Actual	Comment	Reference
C	-20	HIS	-	EXPRESSION TAG	UNP Q81W29
C	-19	HIS	-	EXPRESSION TAG	UNP Q81W29
C	-18	HIS	-	EXPRESSION TAG	UNP Q81W29
C	-17	HIS	-	EXPRESSION TAG	UNP Q81W29
C	-16	SER	-	EXPRESSION TAG	UNP Q81W29
C	-15	SER	-	EXPRESSION TAG	UNP Q81W29
C	-14	GLY	-	EXPRESSION TAG	UNP Q81W29
C	-13	VAL	-	EXPRESSION TAG	UNP Q81W29
C	-12	ASP	-	EXPRESSION TAG	UNP Q81W29
C	-11	LEU	-	EXPRESSION TAG	UNP Q81W29
C	-10	GLY	-	EXPRESSION TAG	UNP Q81W29
C	-9	THR	-	EXPRESSION TAG	UNP Q81W29
C	-8	GLU	-	EXPRESSION TAG	UNP Q81W29
C	-7	ASN	-	EXPRESSION TAG	UNP Q81W29
C	-6	LEU	-	EXPRESSION TAG	UNP Q81W29
C	-5	TYR	-	EXPRESSION TAG	UNP Q81W29
C	-4	PHE	-	EXPRESSION TAG	UNP Q81W29
C	-3	GLN	-	EXPRESSION TAG	UNP Q81W29
C	-2	SER	-	EXPRESSION TAG	UNP Q81W29
C	-1	ASN	-	EXPRESSION TAG	UNP Q81W29
C	0	ALA	-	EXPRESSION TAG	UNP Q81W29
C	92	GLY	-	LINKER	UNP Q81W29
C	220	GLY	-	LINKER	UNP Q81W29
D	-23	MET	-	EXPRESSION TAG	UNP Q81W29
D	-22	HIS	-	EXPRESSION TAG	UNP Q81W29
D	-21	HIS	-	EXPRESSION TAG	UNP Q81W29
D	-20	HIS	-	EXPRESSION TAG	UNP Q81W29
D	-19	HIS	-	EXPRESSION TAG	UNP Q81W29
D	-18	HIS	-	EXPRESSION TAG	UNP Q81W29
D	-17	HIS	-	EXPRESSION TAG	UNP Q81W29
D	-16	SER	-	EXPRESSION TAG	UNP Q81W29
D	-15	SER	-	EXPRESSION TAG	UNP Q81W29
D	-14	GLY	-	EXPRESSION TAG	UNP Q81W29
D	-13	VAL	-	EXPRESSION TAG	UNP Q81W29
D	-12	ASP	-	EXPRESSION TAG	UNP Q81W29
D	-11	LEU	-	EXPRESSION TAG	UNP Q81W29
D	-10	GLY	-	EXPRESSION TAG	UNP Q81W29
D	-9	THR	-	EXPRESSION TAG	UNP Q81W29
D	-8	GLU	-	EXPRESSION TAG	UNP Q81W29
D	-7	ASN	-	EXPRESSION TAG	UNP Q81W29
D	-6	LEU	-	EXPRESSION TAG	UNP Q81W29
D	-5	TYR	-	EXPRESSION TAG	UNP Q81W29

*Continued on next page...*

*Continued from previous page...*

Chain	Residue	Modelled	Actual	Comment	Reference
D	-4	PHE	-	EXPRESSION TAG	UNP Q81W29
D	-3	GLN	-	EXPRESSION TAG	UNP Q81W29
D	-2	SER	-	EXPRESSION TAG	UNP Q81W29
D	-1	ASN	-	EXPRESSION TAG	UNP Q81W29
D	0	ALA	-	EXPRESSION TAG	UNP Q81W29
D	92	GLY	-	LINKER	UNP Q81W29
D	220	GLY	-	LINKER	UNP Q81W29
E	-23	MET	-	EXPRESSION TAG	UNP Q81W29
E	-22	HIS	-	EXPRESSION TAG	UNP Q81W29
E	-21	HIS	-	EXPRESSION TAG	UNP Q81W29
E	-20	HIS	-	EXPRESSION TAG	UNP Q81W29
E	-19	HIS	-	EXPRESSION TAG	UNP Q81W29
E	-18	HIS	-	EXPRESSION TAG	UNP Q81W29
E	-17	HIS	-	EXPRESSION TAG	UNP Q81W29
E	-16	SER	-	EXPRESSION TAG	UNP Q81W29
E	-15	SER	-	EXPRESSION TAG	UNP Q81W29
E	-14	GLY	-	EXPRESSION TAG	UNP Q81W29
E	-13	VAL	-	EXPRESSION TAG	UNP Q81W29
E	-12	ASP	-	EXPRESSION TAG	UNP Q81W29
E	-11	LEU	-	EXPRESSION TAG	UNP Q81W29
E	-10	GLY	-	EXPRESSION TAG	UNP Q81W29
E	-9	THR	-	EXPRESSION TAG	UNP Q81W29
E	-8	GLU	-	EXPRESSION TAG	UNP Q81W29
E	-7	ASN	-	EXPRESSION TAG	UNP Q81W29
E	-6	LEU	-	EXPRESSION TAG	UNP Q81W29
E	-5	TYR	-	EXPRESSION TAG	UNP Q81W29
E	-4	PHE	-	EXPRESSION TAG	UNP Q81W29
E	-3	GLN	-	EXPRESSION TAG	UNP Q81W29
E	-2	SER	-	EXPRESSION TAG	UNP Q81W29
E	-1	ASN	-	EXPRESSION TAG	UNP Q81W29
E	0	ALA	-	EXPRESSION TAG	UNP Q81W29
E	92	GLY	-	LINKER	UNP Q81W29
E	220	GLY	-	LINKER	UNP Q81W29
F	-23	MET	-	EXPRESSION TAG	UNP Q81W29
F	-22	HIS	-	EXPRESSION TAG	UNP Q81W29
F	-21	HIS	-	EXPRESSION TAG	UNP Q81W29
F	-20	HIS	-	EXPRESSION TAG	UNP Q81W29
F	-19	HIS	-	EXPRESSION TAG	UNP Q81W29
F	-18	HIS	-	EXPRESSION TAG	UNP Q81W29
F	-17	HIS	-	EXPRESSION TAG	UNP Q81W29
F	-16	SER	-	EXPRESSION TAG	UNP Q81W29
F	-15	SER	-	EXPRESSION TAG	UNP Q81W29

*Continued on next page...*

*Continued from previous page...*

Chain	Residue	Modelled	Actual	Comment	Reference
F	-14	GLY	-	EXPRESSION TAG	UNP Q81W29
F	-13	VAL	-	EXPRESSION TAG	UNP Q81W29
F	-12	ASP	-	EXPRESSION TAG	UNP Q81W29
F	-11	LEU	-	EXPRESSION TAG	UNP Q81W29
F	-10	GLY	-	EXPRESSION TAG	UNP Q81W29
F	-9	THR	-	EXPRESSION TAG	UNP Q81W29
F	-8	GLU	-	EXPRESSION TAG	UNP Q81W29
F	-7	ASN	-	EXPRESSION TAG	UNP Q81W29
F	-6	LEU	-	EXPRESSION TAG	UNP Q81W29
F	-5	TYR	-	EXPRESSION TAG	UNP Q81W29
F	-4	PHE	-	EXPRESSION TAG	UNP Q81W29
F	-3	GLN	-	EXPRESSION TAG	UNP Q81W29
F	-2	SER	-	EXPRESSION TAG	UNP Q81W29
F	-1	ASN	-	EXPRESSION TAG	UNP Q81W29
F	0	ALA	-	EXPRESSION TAG	UNP Q81W29
F	92	GLY	-	LINKER	UNP Q81W29
F	220	GLY	-	LINKER	UNP Q81W29
G	-23	MET	-	EXPRESSION TAG	UNP Q81W29
G	-22	HIS	-	EXPRESSION TAG	UNP Q81W29
G	-21	HIS	-	EXPRESSION TAG	UNP Q81W29
G	-20	HIS	-	EXPRESSION TAG	UNP Q81W29
G	-19	HIS	-	EXPRESSION TAG	UNP Q81W29
G	-18	HIS	-	EXPRESSION TAG	UNP Q81W29
G	-17	HIS	-	EXPRESSION TAG	UNP Q81W29
G	-16	SER	-	EXPRESSION TAG	UNP Q81W29
G	-15	SER	-	EXPRESSION TAG	UNP Q81W29
G	-14	GLY	-	EXPRESSION TAG	UNP Q81W29
G	-13	VAL	-	EXPRESSION TAG	UNP Q81W29
G	-12	ASP	-	EXPRESSION TAG	UNP Q81W29
G	-11	LEU	-	EXPRESSION TAG	UNP Q81W29
G	-10	GLY	-	EXPRESSION TAG	UNP Q81W29
G	-9	THR	-	EXPRESSION TAG	UNP Q81W29
G	-8	GLU	-	EXPRESSION TAG	UNP Q81W29
G	-7	ASN	-	EXPRESSION TAG	UNP Q81W29
G	-6	LEU	-	EXPRESSION TAG	UNP Q81W29
G	-5	TYR	-	EXPRESSION TAG	UNP Q81W29
G	-4	PHE	-	EXPRESSION TAG	UNP Q81W29
G	-3	GLN	-	EXPRESSION TAG	UNP Q81W29
G	-2	SER	-	EXPRESSION TAG	UNP Q81W29
G	-1	ASN	-	EXPRESSION TAG	UNP Q81W29
G	0	ALA	-	EXPRESSION TAG	UNP Q81W29
G	92	GLY	-	LINKER	UNP Q81W29

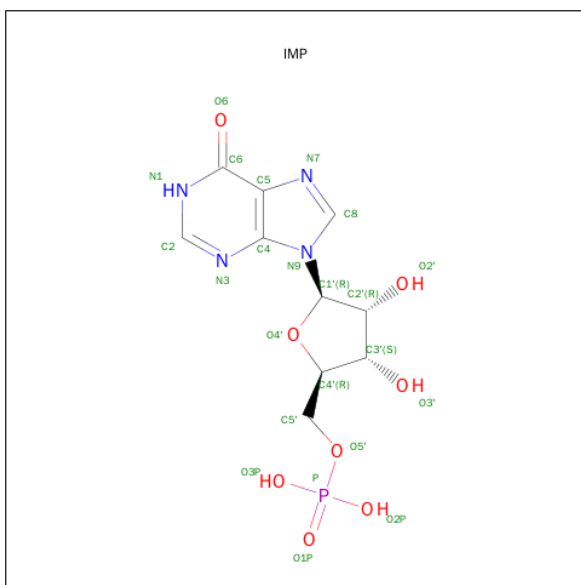
*Continued on next page...*



*Continued from previous page...*

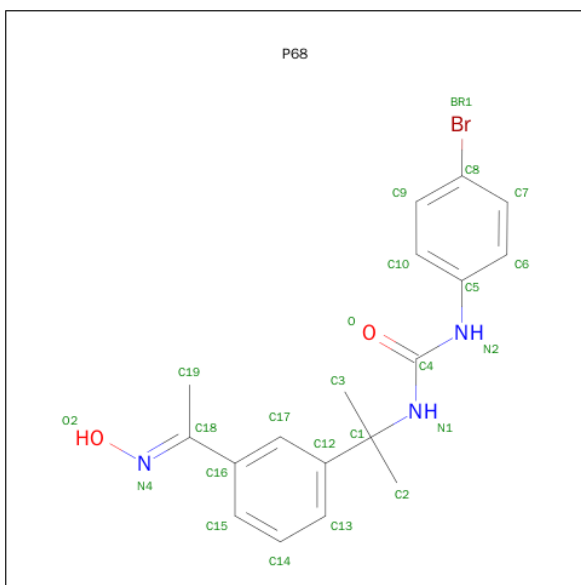
Chain	Residue	Modelled	Actual	Comment	Reference
G	220	GLY	-	LINKER	UNP Q81W29
H	-23	MET	-	EXPRESSION TAG	UNP Q81W29
H	-22	HIS	-	EXPRESSION TAG	UNP Q81W29
H	-21	HIS	-	EXPRESSION TAG	UNP Q81W29
H	-20	HIS	-	EXPRESSION TAG	UNP Q81W29
H	-19	HIS	-	EXPRESSION TAG	UNP Q81W29
H	-18	HIS	-	EXPRESSION TAG	UNP Q81W29
H	-17	HIS	-	EXPRESSION TAG	UNP Q81W29
H	-16	SER	-	EXPRESSION TAG	UNP Q81W29
H	-15	SER	-	EXPRESSION TAG	UNP Q81W29
H	-14	GLY	-	EXPRESSION TAG	UNP Q81W29
H	-13	VAL	-	EXPRESSION TAG	UNP Q81W29
H	-12	ASP	-	EXPRESSION TAG	UNP Q81W29
H	-11	LEU	-	EXPRESSION TAG	UNP Q81W29
H	-10	GLY	-	EXPRESSION TAG	UNP Q81W29
H	-9	THR	-	EXPRESSION TAG	UNP Q81W29
H	-8	GLU	-	EXPRESSION TAG	UNP Q81W29
H	-7	ASN	-	EXPRESSION TAG	UNP Q81W29
H	-6	LEU	-	EXPRESSION TAG	UNP Q81W29
H	-5	TYR	-	EXPRESSION TAG	UNP Q81W29
H	-4	PHE	-	EXPRESSION TAG	UNP Q81W29
H	-3	GLN	-	EXPRESSION TAG	UNP Q81W29
H	-2	SER	-	EXPRESSION TAG	UNP Q81W29
H	-1	ASN	-	EXPRESSION TAG	UNP Q81W29
H	0	ALA	-	EXPRESSION TAG	UNP Q81W29
H	92	GLY	-	LINKER	UNP Q81W29
H	220	GLY	-	LINKER	UNP Q81W29

- Molecule 2 is INOSINIC ACID (three-letter code: IMP) (formula: C<sub>10</sub>H<sub>13</sub>N<sub>4</sub>O<sub>8</sub>P).



Mol	Chain	Residues	Atoms					ZeroOcc	AltConf
2	A	1	Total	C	N	O	P	0	0
			23	10	4	8	1		
2	B	1	Total	C	N	O	P	0	0
			23	10	4	8	1		
2	C	1	Total	C	N	O	P	0	0
			23	10	4	8	1		
2	D	1	Total	C	N	O	P	0	0
			23	10	4	8	1		
2	E	1	Total	C	N	O	P	0	0
			23	10	4	8	1		
2	F	1	Total	C	N	O	P	0	0
			23	10	4	8	1		
2	G	1	Total	C	N	O	P	0	0
			23	10	4	8	1		
2	H	1	Total	C	N	O	P	0	0
			23	10	4	8	1		

- Molecule 3 is 1-(4-BROMOPHENYL)-3-(2-{3-[(1E)-N-HYDROXYETHANIMIDOYL]PHE  
NYL}PROPAN-2-YL)UREA (three-letter code: P68) (formula: C<sub>18</sub>H<sub>20</sub>BrN<sub>3</sub>O<sub>2</sub>).



Mol	Chain	Residues	Atoms					ZeroOcc	AltConf
3	A	1	Total	Br	C	N	O	0	0
			24	1	18	3	2		
3	B	1	Total	Br	C	N	O	0	0
			24	1	18	3	2		
3	C	1	Total	Br	C	N	O	0	0
			24	1	18	3	2		
3	D	1	Total	Br	C	N	O	0	0
			24	1	18	3	2		
3	E	1	Total	Br	C	N	O	0	0
			24	1	18	3	2		
3	E	1	Total	Br	C	N	O	0	0
			24	1	18	3	2		
3	G	1	Total	Br	C	N	O	0	0
			24	1	18	3	2		
3	H	1	Total	Br	C	N	O	0	0
			24	1	18	3	2		

- Molecule 4 is water.

Mol	Chain	Residues	Atoms		ZeroOcc	AltConf
4	A	21	Total	O	0	0
			21	21		
4	B	20	Total	O	0	0
			20	20		
4	C	21	Total	O	0	0
			21	21		
4	D	14	Total	O	0	0
			14	14		

*Continued on next page...*

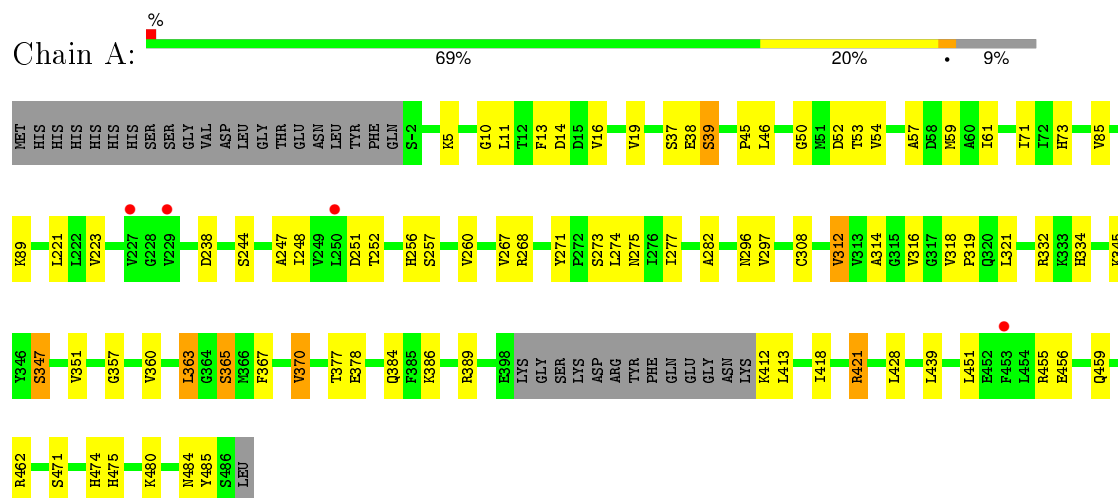
*Continued from previous page...*

Mol	Chain	Residues	Atoms		ZeroOcc	AltConf
4	E	9	Total 9	O 9	0	0
4	F	7	Total 7	O 7	0	0
4	G	10	Total 10	O 10	0	0
4	H	15	Total 15	O 15	0	0

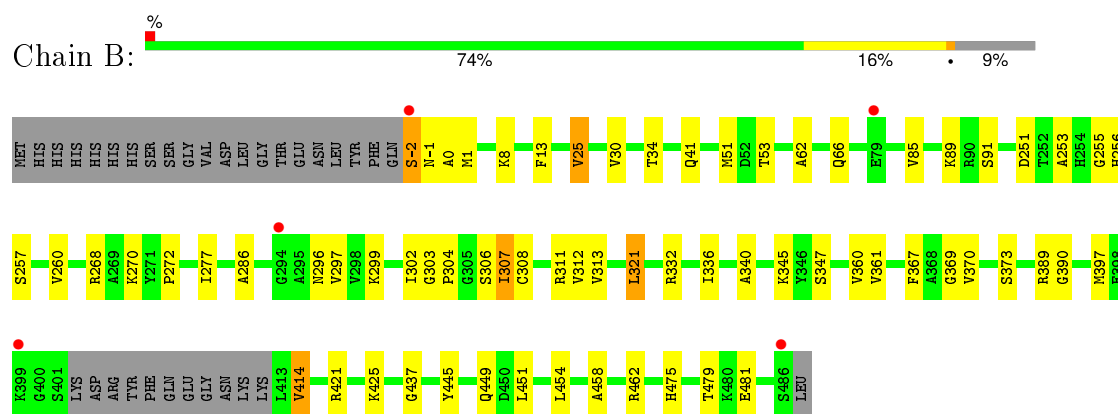
### 3 Residue-property plots

These plots are drawn for all protein, RNA and DNA chains in the entry. The first graphic for a chain summarises the proportions of errors displayed in the second graphic. The second graphic shows the sequence view annotated by issues in geometry and electron density. Residues are color-coded according to the number of geometric quality criteria for which they contain at least one outlier: green = 0, yellow = 1, orange = 2 and red = 3 or more. A red dot above a residue indicates a poor fit to the electron density ( $RSRZ > 2$ ). Stretches of 2 or more consecutive residues without any outlier are shown as a green connector. Residues present in the sample, but not in the model, are shown in grey.

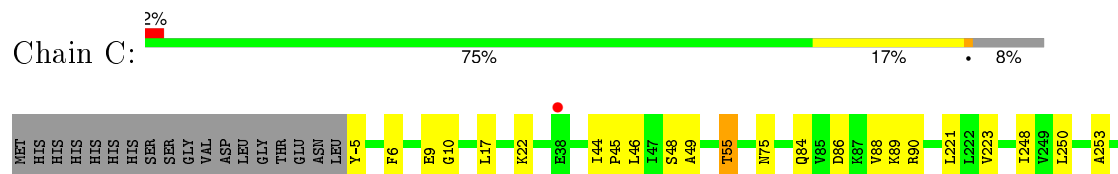
- Molecule 1: Inosine-5'-monophosphate dehydrogenase

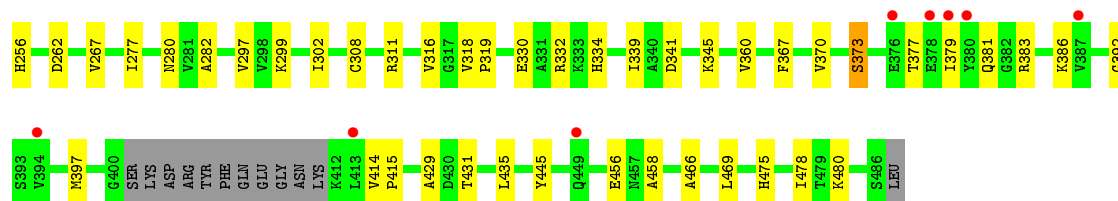


- Molecule 1: Inosine-5'-monophosphate dehydrogenase

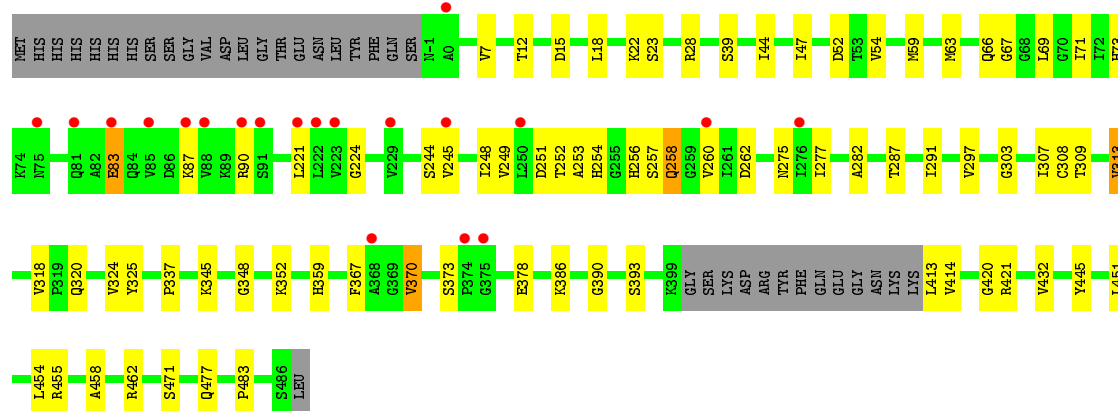


- Molecule 1: Inosine-5'-monophosphate dehydrogenase

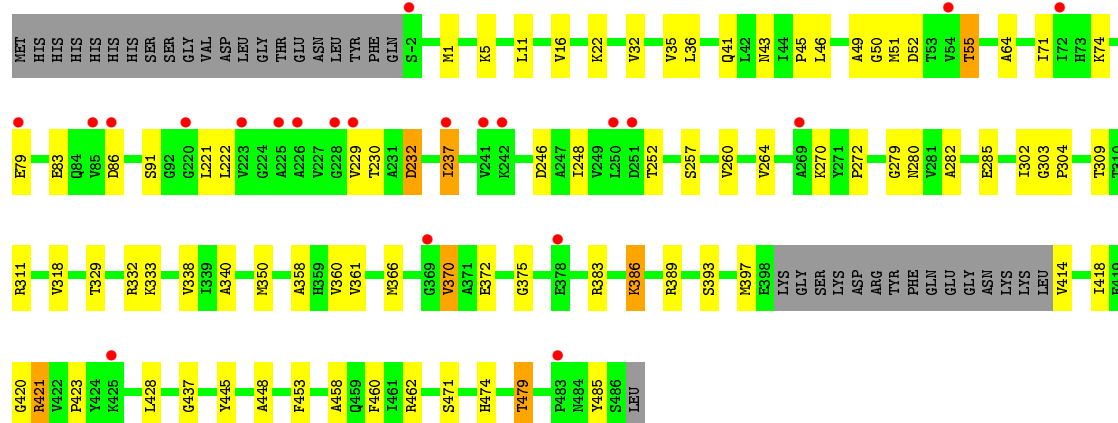




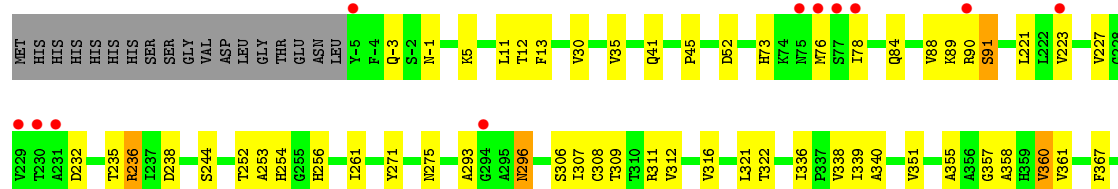
• Molecule 1: Inosine-5'-monophosphate dehydrogenase

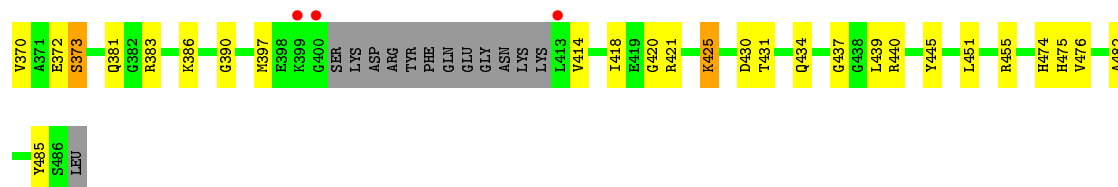


• Molecule 1: Inosine-5'-monophosphate dehydrogenase

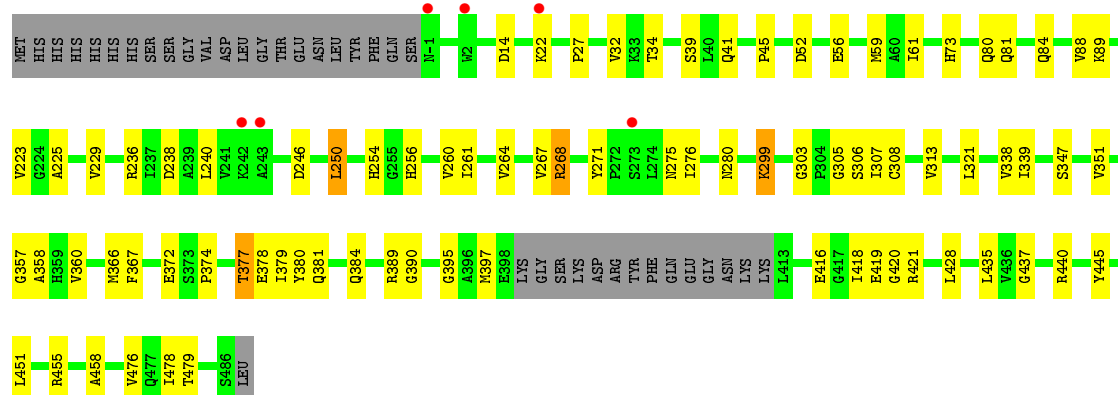


• Molecule 1: Inosine-5'-monophosphate dehydrogenase

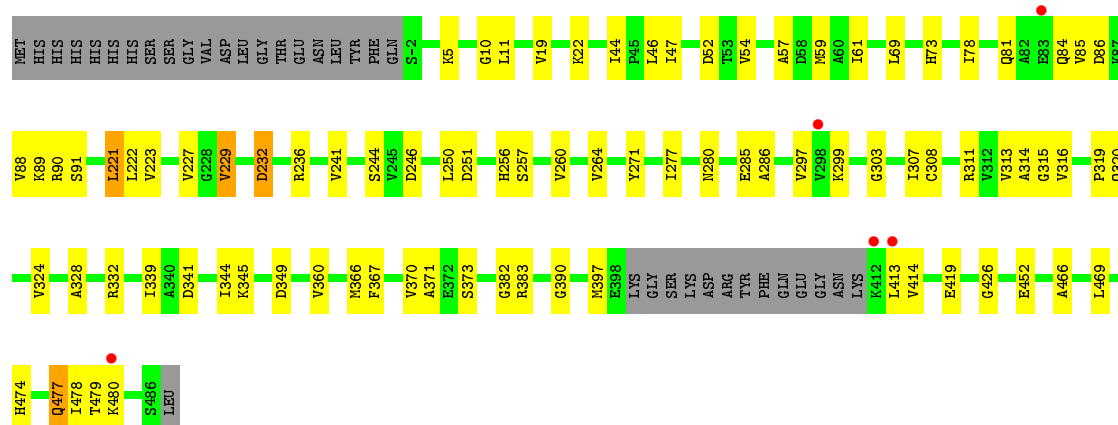




- Molecule 1: Inosine-5'-monophosphate dehydrogenase



- Molecule 1: Inosine-5'-monophosphate dehydrogenase



## 4 Data and refinement statistics

Property	Value	Source
Space group	P 1	Depositor
Cell constants a, b, c, $\alpha$ , $\beta$ , $\gamma$	83.22Å 89.39Å 103.99Å 81.13° 89.95° 83.59°	Depositor
Resolution (Å)	36.25 – 2.60 43.96 – 2.60	Depositor EDS
% Data completeness (in resolution range)	97.5 (36.25-2.60) 92.8 (43.96-2.60)	Depositor EDS
$R_{merge}$	(Not available)	Depositor
$R_{sym}$	0.09	Depositor
$\langle I/\sigma(I) \rangle$ <sup>1</sup>	2.29 (at 2.61Å)	Xtriage
Refinement program	PHENIX (phenix.refine: 1.8.1_1161)	Depositor
R, $R_{free}$	0.194 , 0.253 0.207 , 0.263	Depositor DCC
$R_{free}$ test set	4416 reflections (5.27%)	DCC
Wilson B-factor (Å <sup>2</sup> )	45.8	Xtriage
Anisotropy	0.317	Xtriage
Bulk solvent $k_{sol}$ (e/Å <sup>3</sup> ), $B_{sol}$ (Å <sup>2</sup> )	0.31 , 31.2	EDS
Estimated twinning fraction	No twinning to report.	Xtriage
L-test for twinning <sup>2</sup>	$\langle  L  \rangle = 0.45$ , $\langle L^2 \rangle = 0.28$	Xtriage
Outliers	0 of 88227 reflections	Xtriage
$F_o, F_c$ correlation	0.93	EDS
Total number of atoms	21010	wwPDB-VP
Average B, all atoms (Å <sup>2</sup> )	60.0	wwPDB-VP

Xtriage's analysis on translational NCS is as follows: *The largest off-origin peak in the Patterson function is 6.64% of the height of the origin peak. No significant pseudotranslation is detected.*

<sup>1</sup>Intensities estimated from amplitudes.

<sup>2</sup>Theoretical values of  $\langle |L| \rangle$ ,  $\langle L^2 \rangle$  for acentric reflections are 0.5, 0.375 respectively for untwinned datasets, and 0.333, 0.2 for perfectly twinned datasets.



## 5 Model quality [i](#)

### 5.1 Standard geometry [i](#)

Bond lengths and bond angles in the following residue types are not validated in this section: IMP, P68

The Z score for a bond length (or angle) is the number of standard deviations the observed value is removed from the expected value. A bond length (or angle) with  $|Z| > 5$  is considered an outlier worth inspection. RMSZ is the root-mean-square of all Z scores of the bond lengths (or angles).

Mol	Chain	Bond lengths		Bond angles	
		RMSZ	$\# Z  > 5$	RMSZ	$\# Z  > 5$
1	A	0.46	0/2594	0.59	0/3507
1	B	0.45	0/2604	0.60	0/3520
1	C	0.48	0/2641	0.62	0/3569
1	D	0.43	0/2588	0.57	0/3499
1	E	0.43	0/2577	0.57	0/3485
1	F	0.41	0/2632	0.57	0/3558
1	G	0.42	0/2579	0.58	0/3488
1	H	0.44	0/2594	0.59	0/3507
All	All	0.44	0/20809	0.59	0/28133

There are no bond length outliers.

There are no bond angle outliers.

There are no chirality outliers.

There are no planarity outliers.

### 5.2 Too-close contacts [i](#)

In the following table, the Non-H and H(model) columns list the number of non-hydrogen atoms and hydrogen atoms in the chain respectively. The H(added) column lists the number of hydrogen atoms added and optimized by MolProbity. The Clashes column lists the number of clashes within the asymmetric unit, whereas Symm-Clashes lists symmetry related clashes.

Mol	Chain	Non-H	H(model)	H(added)	Clashes	Symm-Clashes
1	A	2558	0	2613	52	0
1	B	2568	0	2621	43	0
1	C	2603	0	2655	39	0
1	D	2552	0	2608	46	0
1	E	2541	0	2589	67	0

*Continued on next page...*

*Continued from previous page...*

Mol	Chain	Non-H	H(model)	H(added)	Clashes	Symm-Clashes
1	F	2594	0	2642	52	0
1	G	2543	0	2595	58	0
1	H	2558	0	2613	64	0
2	A	23	0	11	2	0
2	B	23	0	11	1	0
2	C	23	0	11	3	0
2	D	23	0	11	0	0
2	E	23	0	11	1	0
2	F	23	0	11	1	0
2	G	23	0	11	1	0
2	H	23	0	11	1	0
3	A	24	0	20	5	0
3	B	24	0	20	6	0
3	C	24	0	20	1	0
3	D	24	0	20	1	0
3	E	48	0	40	5	0
3	G	24	0	20	2	0
3	H	24	0	20	3	0
4	A	21	0	0	0	0
4	B	20	0	0	0	0
4	C	21	0	0	0	0
4	D	14	0	0	2	0
4	E	9	0	0	0	0
4	F	7	0	0	0	0
4	G	10	0	0	0	0
4	H	15	0	0	1	0
All	All	21010	0	21184	381	0

The all-atom clashscore is defined as the number of clashes found per 1000 atoms (including hydrogen atoms). The all-atom clashscore for this structure is 9.

The worst 5 of 381 close contacts within the same asymmetric unit are listed below, sorted by their clash magnitude.

Atom-1	Atom-2	Interatomic distance (Å)	Clash overlap (Å)
1:H:222:LEU:HA	1:H:246:ASP:OD1	1.64	0.96
1:E:55:THR:HG21	1:E:71:ILE:O	1.67	0.94
3:A:501:P68:H2	3:A:501:P68:O	1.73	0.89
1:B:307:ILE:HD13	1:B:390:GLY:HA2	1.56	0.85
1:B:307:ILE:HD13	1:B:390:GLY:CA	2.07	0.85

There are no symmetry-related clashes.

## 5.3 Torsion angles [i](#)

### 5.3.1 Protein backbone [i](#)

In the following table, the Percentiles column shows the percent Ramachandran outliers of the chain as a percentile score with respect to all X-ray entries followed by that with respect to entries of similar resolution.

The Analysed column shows the number of residues for which the backbone conformation was analysed, and the total number of residues.

Mol	Chain	Analysed	Favoured	Allowed	Outliers	Percentiles	
1	A	345/384 (90%)	332 (96%)	13 (4%)	0	100	100
1	B	347/384 (90%)	334 (96%)	13 (4%)	0	100	100
1	C	350/384 (91%)	339 (97%)	10 (3%)	1 (0%)	46	72
1	D	344/384 (90%)	333 (97%)	11 (3%)	0	100	100
1	E	343/384 (89%)	332 (97%)	11 (3%)	0	100	100
1	F	349/384 (91%)	332 (95%)	17 (5%)	0	100	100
1	G	343/384 (89%)	330 (96%)	12 (4%)	1 (0%)	46	72
1	H	345/384 (90%)	335 (97%)	10 (3%)	0	100	100
All	All	2766/3072 (90%)	2667 (96%)	97 (4%)	2 (0%)	56	81

All (2) Ramachandran outliers are listed below:

Mol	Chain	Res	Type
1	C	429	ALA
1	G	476	VAL

### 5.3.2 Protein sidechains [i](#)

In the following table, the Percentiles column shows the percent sidechain outliers of the chain as a percentile score with respect to all X-ray entries followed by that with respect to entries of similar resolution.

The Analysed column shows the number of residues for which the sidechain conformation was analysed, and the total number of residues.

Mol	Chain	Analysed	Rotameric	Outliers	Percentiles	
1	A	267/298 (90%)	251 (94%)	16 (6%)	24	47
1	B	268/298 (90%)	252 (94%)	16 (6%)	24	47
1	C	271/298 (91%)	257 (95%)	14 (5%)	29	54

*Continued on next page...*

*Continued from previous page...*

Mol	Chain	Analysed	Rotameric	Outliers	Percentiles	
1	D	266/298 (89%)	252 (95%)	14 (5%)	28	53
1	E	265/298 (89%)	249 (94%)	16 (6%)	24	47
1	F	270/298 (91%)	255 (94%)	15 (6%)	26	50
1	G	265/298 (89%)	256 (97%)	9 (3%)	44	72
1	H	267/298 (90%)	257 (96%)	10 (4%)	41	69
All	All	2139/2384 (90%)	2029 (95%)	110 (5%)	29	55

5 of 110 residues with a non-rotameric sidechain are listed below:

Mol	Chain	Res	Type
1	D	244	SER
1	E	16	VAL
1	H	221	LEU
1	D	248	ILE
1	D	313	VAL

Some sidechains can be flipped to improve hydrogen bonding and reduce clashes. 5 of 8 such sidechains are listed below:

Mol	Chain	Res	Type
1	E	334	HIS
1	H	477	GLN
1	G	381	GLN
1	D	475	HIS
1	E	381	GLN

### 5.3.3 RNA ⓘ

There are no RNA molecules in this entry.

## 5.4 Non-standard residues in protein, DNA, RNA chains ⓘ

There are no non-standard protein/DNA/RNA residues in this entry.

## 5.5 Carbohydrates ⓘ

There are no carbohydrates in this entry.

## 5.6 Ligand geometry ⓘ

16 ligands are modelled in this entry.

In the following table, the Counts columns list the number of bonds (or angles) for which Mogul statistics could be retrieved, the number of bonds (or angles) that are observed in the model and the number of bonds (or angles) that are defined in the chemical component dictionary. The Link column lists molecule types, if any, to which the group is linked. The Z score for a bond length (or angle) is the number of standard deviations the observed value is removed from the expected value. A bond length (or angle) with  $|Z| > 2$  is considered an outlier worth inspection. RMSZ is the root-mean-square of all Z scores of the bond lengths (or angles).

Mol	Type	Chain	Res	Link	Bond lengths			Bond angles		
					Counts	RMSZ	# Z  > 2	Counts	RMSZ	# Z  > 2
2	IMP	A	500	-	20,25,25	1.32	3 (15%)	22,38,38	2.17	2 (9%)
3	P68	A	501	-	25,25,25	1.58	3 (12%)	35,35,35	1.61	6 (17%)
2	IMP	B	500	-	20,25,25	1.36	3 (15%)	22,38,38	2.46	3 (13%)
3	P68	B	501	-	25,25,25	1.43	4 (16%)	35,35,35	1.37	4 (11%)
2	IMP	C	500	-	20,25,25	1.38	3 (15%)	22,38,38	2.70	3 (13%)
3	P68	C	501	-	25,25,25	0.92	1 (4%)	35,35,35	1.59	5 (14%)
2	IMP	D	500	-	20,25,25	1.34	3 (15%)	22,38,38	2.55	4 (18%)
3	P68	D	501	-	25,25,25	0.81	1 (4%)	35,35,35	1.55	5 (14%)
2	IMP	E	501	-	20,25,25	1.26	3 (15%)	22,38,38	2.43	3 (13%)
3	P68	E	502	-	25,25,25	1.36	3 (12%)	35,35,35	1.40	3 (8%)
3	P68	E	503	-	25,25,25	0.84	1 (4%)	35,35,35	1.92	6 (17%)
2	IMP	F	500	-	20,25,25	1.22	3 (15%)	22,38,38	2.53	3 (13%)
2	IMP	G	500	-	20,25,25	1.22	3 (15%)	22,38,38	2.63	3 (13%)
3	P68	G	501	-	25,25,25	0.84	1 (4%)	35,35,35	2.01	6 (17%)
2	IMP	H	500	-	20,25,25	1.18	3 (15%)	22,38,38	2.99	3 (13%)
3	P68	H	501	-	25,25,25	1.46	3 (12%)	35,35,35	1.52	2 (5%)

In the following table, the Chirals column lists the number of chiral outliers, the number of chiral centers analysed, the number of these observed in the model and the number defined in the chemical component dictionary. Similar counts are reported in the Torsion and Rings columns. '-' means no outliers of that kind were identified.

Mol	Type	Chain	Res	Link	Chirals	Torsions	Rings
2	IMP	A	500	-	-	0/6/26/26	0/3/3/3
3	P68	A	501	-	-	0/21/21/21	0/2/2/2
2	IMP	B	500	-	-	0/6/26/26	0/3/3/3
3	P68	B	501	-	-	0/21/21/21	0/2/2/2
2	IMP	C	500	-	-	0/6/26/26	0/3/3/3

*Continued on next page...*

*Continued from previous page...*

Mol	Type	Chain	Res	Link	Chirals	Torsions	Rings
3	P68	C	501	-	-	0/21/21/21	0/2/2/2
2	IMP	D	500	-	-	0/6/26/26	0/3/3/3
3	P68	D	501	-	-	0/21/21/21	0/2/2/2
2	IMP	E	501	-	-	0/6/26/26	0/3/3/3
3	P68	E	502	-	-	0/21/21/21	0/2/2/2
3	P68	E	503	-	-	0/21/21/21	0/2/2/2
2	IMP	F	500	-	-	0/6/26/26	0/3/3/3
2	IMP	G	500	-	-	0/6/26/26	0/3/3/3
3	P68	G	501	-	-	0/21/21/21	0/2/2/2
2	IMP	H	500	-	-	0/6/26/26	0/3/3/3
3	P68	H	501	-	-	0/21/21/21	0/2/2/2

The worst 5 of 41 bond length outliers are listed below:

Mol	Chain	Res	Type	Atoms	Z	Observed(Å)	Ideal(Å)
3	A	501	P68	C1-N1	-4.25	1.43	1.47
3	H	501	P68	C1-C12	-4.25	1.48	1.54
3	A	501	P68	C1-C12	-4.11	1.48	1.54
3	B	501	P68	C1-C12	-4.10	1.48	1.54
3	E	502	P68	C1-C12	-3.66	1.49	1.54

The worst 5 of 61 bond angle outliers are listed below:

Mol	Chain	Res	Type	Atoms	Z	Observed(°)	Ideal(°)
2	H	500	IMP	N3-C2-N1	-12.79	119.10	128.89
2	C	500	IMP	N3-C2-N1	-11.47	120.11	128.89
2	G	500	IMP	N3-C2-N1	-11.24	120.29	128.89
2	F	500	IMP	N3-C2-N1	-10.77	120.65	128.89
2	D	500	IMP	N3-C2-N1	-10.75	120.66	128.89

There are no chirality outliers.

There are no torsion outliers.

There are no ring outliers.

14 monomers are involved in 33 short contacts:

Mol	Chain	Res	Type	Clashes	Symm-Clashes
2	A	500	IMP	2	0
3	A	501	P68	5	0
2	B	500	IMP	1	0
3	B	501	P68	6	0
2	C	500	IMP	3	0

*Continued on next page...*

*Continued from previous page...*

Mol	Chain	Res	Type	Clashes	Symm-Clashes
3	C	501	P68	1	0
3	D	501	P68	1	0
2	E	501	IMP	1	0
3	E	502	P68	5	0
2	F	500	IMP	1	0
2	G	500	IMP	1	0
3	G	501	P68	2	0
2	H	500	IMP	1	0
3	H	501	P68	3	0

## 5.7 Other polymers [i](#)

There are no such residues in this entry.

## 5.8 Polymer linkage issues [i](#)

There are no chain breaks in this entry.

## 6 Fit of model and data ⓘ

### 6.1 Protein, DNA and RNA chains ⓘ

In the following table, the column labelled ‘#RSRZ> 2’ contains the number (and percentage) of RSRZ outliers, followed by percent RSRZ outliers for the chain as percentile scores relative to all X-ray entries and entries of similar resolution. The OWAB column contains the minimum, median, 95<sup>th</sup> percentile and maximum values of the occupancy-weighted average B-factor per residue. The column labelled ‘Q< 0.9’ lists the number of (and percentage) of residues with an average occupancy less than 0.9.

Mol	Chain	Analysed	<RSRZ>	#RSRZ>2	OWAB(Å <sup>2</sup> )	Q<0.9
1	A	349/384 (90%)	0.25	4 (1%) 82 79	39, 54, 79, 93	1 (0%)
1	B	351/384 (91%)	0.26	5 (1%) 78 74	40, 54, 77, 93	2 (0%)
1	C	354/384 (92%)	0.25	9 (2%) 61 54	38, 51, 80, 114	2 (0%)
1	D	348/384 (90%)	0.42	20 (5%) 27 20	39, 57, 83, 96	2 (0%)
1	E	347/384 (90%)	0.60	22 (6%) 23 17	46, 66, 92, 107	1 (0%)
1	F	353/384 (91%)	0.43	14 (3%) 42 34	40, 60, 89, 114	0
1	G	347/384 (90%)	0.26	6 (1%) 73 68	44, 60, 77, 95	2 (0%)
1	H	349/384 (90%)	0.26	5 (1%) 78 74	39, 59, 85, 120	1 (0%)
All	All	2798/3072 (91%)	0.34	85 (3%) 54 47	38, 58, 84, 120	11 (0%)

The worst 5 of 85 RSRZ outliers are listed below:

Mol	Chain	Res	Type	RSRZ
1	F	400	GLY	7.2
1	H	412	LYS	5.0
1	F	90	ARG	4.6
1	A	227	VAL	4.6
1	E	85	VAL	4.5

### 6.2 Non-standard residues in protein, DNA, RNA chains ⓘ

There are no non-standard protein/DNA/RNA residues in this entry.

### 6.3 Carbohydrates ⓘ

There are no carbohydrates in this entry.



## 6.4 Ligands [i](#)

In the following table, the Atoms column lists the number of modelled atoms in the group and the number defined in the chemical component dictionary. LLDF column lists the quality of electron density of the group with respect to its neighbouring residues in protein, DNA or RNA chains. The B-factors column lists the minimum, median, 95<sup>th</sup> percentile and maximum values of B factors of atoms in the group. The column labelled 'Q< 0.9' lists the number of atoms with occupancy less than 0.9.

Mol	Type	Chain	Res	Atoms	RSCC	RSR	LLDF	B-factors(Å <sup>2</sup> )	Q<0.9
3	P68	E	502	24/24	0.91	0.26	3.80	68,68,70,137	0
3	P68	E	503	24/24	0.96	0.26	3.37	61,62,63,129	0
3	P68	B	501	24/24	0.94	0.23	1.93	55,56,57,117	0
3	P68	G	501	24/24	0.93	0.19	1.18	58,59,60,119	0
3	P68	A	501	24/24	0.93	0.18	1.18	58,58,59,72	1
3	P68	D	501	24/24	0.94	0.17	0.13	60,60,61,111	0
3	P68	H	501	24/24	0.92	0.16	-0.02	55,56,57,128	0
2	IMP	A	500	23/23	0.96	0.16	-0.07	42,45,47,47	0
2	IMP	H	500	23/23	0.97	0.16	-0.10	42,49,50,50	0
2	IMP	E	501	23/23	0.96	0.15	-0.21	51,59,60,60	0
2	IMP	D	500	23/23	0.97	0.14	-0.33	42,48,49,49	0
3	P68	C	501	24/24	0.95	0.15	-0.43	55,55,58,113	0
2	IMP	C	500	23/23	0.97	0.14	-0.50	38,42,43,43	0
2	IMP	G	500	23/23	0.98	0.13	-0.74	47,50,51,51	0
2	IMP	F	500	23/23	0.96	0.13	-1.19	48,49,50,50	0
2	IMP	B	500	23/23	0.98	0.12	-1.64	40,45,46,46	0

## 6.5 Other polymers [i](#)

There are no such residues in this entry.