



Full wwPDB X-ray Structure Validation Report ⓘ

Feb 1, 2016 – 10:53 AM GMT

PDB ID : 3NH3
Title : Complex of 6-hydroxy-L-nicotine oxidase with final ketone product formed during catalytic turnover
Authors : Kachalova, G.S.; Bartunik, H.D.
Deposited on : 2010-06-14
Resolution : 2.10 Å(reported)

This is a Full wwPDB X-ray Structure Validation Report for a publicly released PDB entry.
We welcome your comments at validation@mail.wwpdb.org
A user guide is available at
<http://wwpdb.org/validation/2016/XrayValidationReportHelp>
with specific help available everywhere you see the ⓘ symbol.

The following versions of software and data (see [references ⓘ](#)) were used in the production of this report:

MolProbity : 4.02b-467
Mogul : 1.7 (RC4), CSD as536be (2015)
Xtriage (Phenix) : 1.9-1692
EDS : rb-20026688
Percentile statistics : 20151230.v01 (using entries in the PDB archive December 30th 2015)
Refmac : 5.8.0135
CCP4 : 6.5.0
Ideal geometry (proteins) : Engh & Huber (2001)
Ideal geometry (DNA, RNA) : Parkinson et al. (1996)
Validation Pipeline (wwPDB-VP) : trunk26865

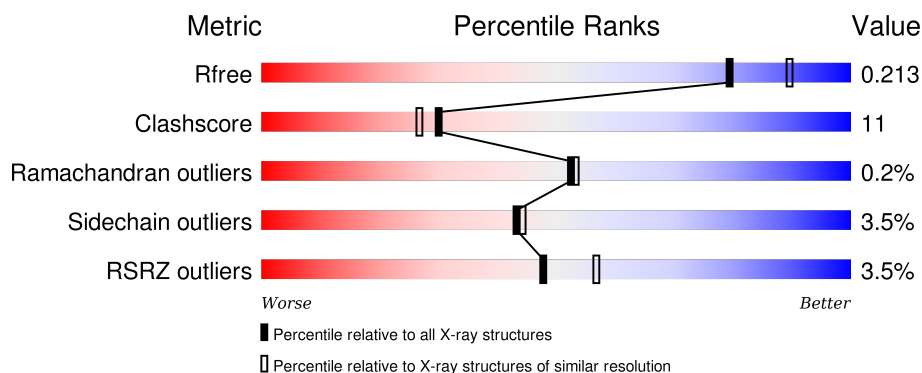
1 Overall quality at a glance

The following experimental techniques were used to determine the structure:

X-RAY DIFFRACTION

The reported resolution of this entry is 2.10 Å.

Percentile scores (ranging between 0-100) for global validation metrics of the entry are shown in the following graphic. The table shows the number of entries on which the scores are based.



Metric	Whole archive (#Entries)	Similar resolution (#Entries, resolution range(Å))
R_{free}	91344	3939 (2.10-2.10)
Clashscore	102246	4460 (2.10-2.10)
Ramachandran outliers	100387	4413 (2.10-2.10)
Sidechain outliers	100360	4414 (2.10-2.10)
RSRZ outliers	91569	3948 (2.10-2.10)

The table below summarises the geometric issues observed across the polymeric chains and their fit to the electron density. The red, orange, yellow and green segments on the lower bar indicate the fraction of residues that contain outliers for ≥ 3 , 2, 1 and 0 types of geometric quality criteria. A grey segment represents the fraction of residues that are not modelled. The numeric value for each fraction is indicated below the corresponding segment, with a dot representing fractions $\leq 5\%$. The upper red bar (where present) indicates the fraction of residues that have poor fit to the electron density. The numeric value is given above the bar.

Mol	Chain	Length	Quality of chain
1	X	431	<div> <div>3%</div> <div>87%</div> <div>10% ..</div> </div>

The following table lists non-polymeric compounds, carbohydrate monomers and non-standard residues in protein, DNA, RNA chains that are outliers for geometric or electron-density-fit criteria:

Mol	Type	Chain	Res	Chirality	Geometry	Clashes	Electron density
4	GP7	X	435	-	-	-	X

Continued on next page...

Continued from previous page...

Mol	Type	Chain	Res	Chirality	Geometry	Clashes	Electron density
5	HNM	X	436[A]	-	-	X	-
5	HNM	X	436[B]	-	-	X	-

2 Entry composition [i](#)

There are 6 unique types of molecules in this entry. The entry contains 3831 atoms, of which 0 are hydrogens and 0 are deuteriums.

In the tables below, the ZeroOcc column contains the number of atoms modelled with zero occupancy, the AltConf column contains the number of residues with at least one atom in alternate conformation and the Trace column contains the number of residues modelled with at most 2 atoms.

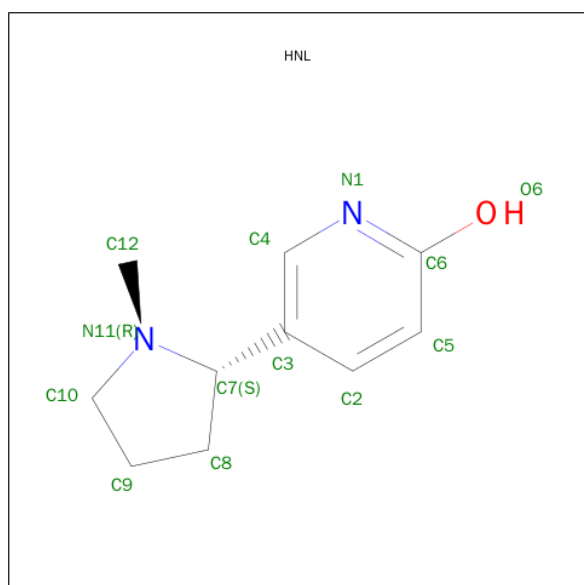
- Molecule 1 is a protein called 6-hydroxy-L-nicotine oxidase.

Mol	Chain	Residues	Atoms					ZeroOcc	AltConf	Trace
			Total	C	N	O	S			
1	X	425	3301	2101	572	619	9	18	5	0

There are 6 discrepancies between the modelled and reference sequences:

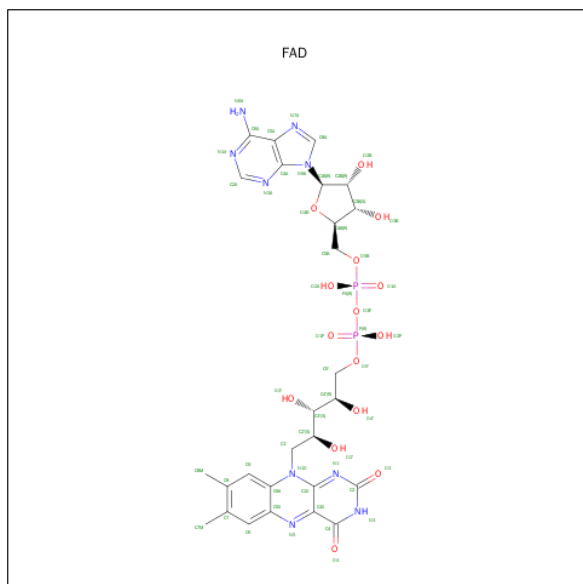
Chain	Residue	Modelled	Actual	Comment	Reference
X	426	HIS	-	EXPRESSION TAG	UNP Q93NH4
X	427	HIS	-	EXPRESSION TAG	UNP Q93NH4
X	428	HIS	-	EXPRESSION TAG	UNP Q93NH4
X	429	HIS	-	EXPRESSION TAG	UNP Q93NH4
X	430	HIS	-	EXPRESSION TAG	UNP Q93NH4
X	431	HIS	-	EXPRESSION TAG	UNP Q93NH4

- Molecule 2 is 5-[(2S)-1-METHYLPYRROLIDIN-2-YL]PYRIDIN-2-OL (three-letter code: HNL) (formula: C₁₀H₁₄N₂O).



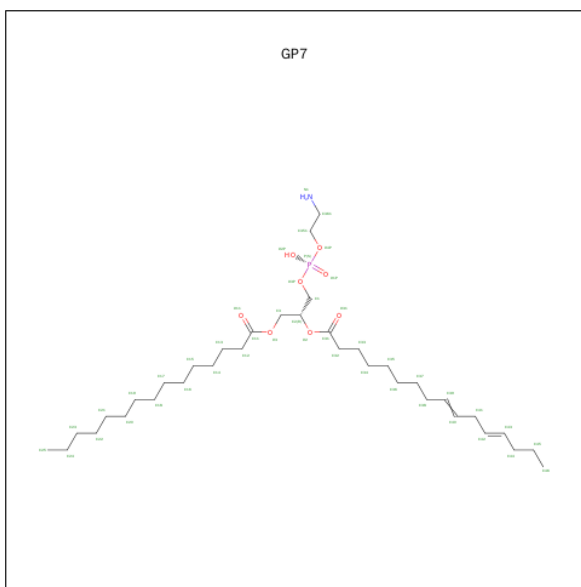
Mol	Chain	Residues	Atoms				ZeroOcc	AltConf
2	X	1	Total	C	N	O	0	0
			13	10	2	1		

- Molecule 3 is FLAVIN-ADENINE DINUCLEOTIDE (three-letter code: FAD) (formula: $C_{27}H_{33}N_9O_{15}P_2$).



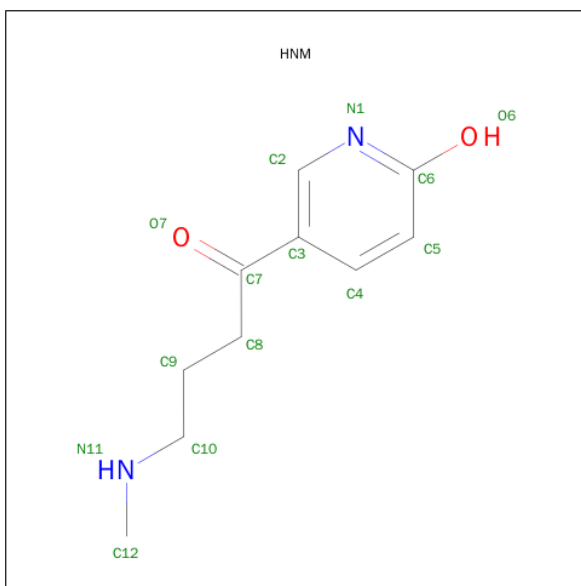
Mol	Chain	Residues	Atoms					ZeroOcc	AltConf
3	X	1	Total	C	N	O	P	0	0
			53	27	9	15	2		

- Molecule 4 is (1R)-2-{[(S)-(2-AMINOETHOXY)(HYDROXY)PHOSPHORYL]OXY}-1-[(PENTADECANOYLOXY)METHYL]ETHYL (12E)-HEXADECA-9,12-DIENOATE (three-letter code: GP7) (formula: $C_{36}H_{68}NO_8P$).



Mol	Chain	Residues	Atoms				ZeroOcc	AltConf
4	X	1	Total	C	O	P	0	0
			43	34	8	1		

- Molecule 5 is 1-(6-HYDROXYPYRIDIN-3-YL)-4-(METHYLAMINO)BUTAN-1-ONE (three-letter code: HNM) (formula: $C_{10}H_{14}N_2O_2$).



Mol	Chain	Residues	Atoms				ZeroOcc	AltConf
5	X	1	Total	C	N	O	0	1
			28	20	4	4		

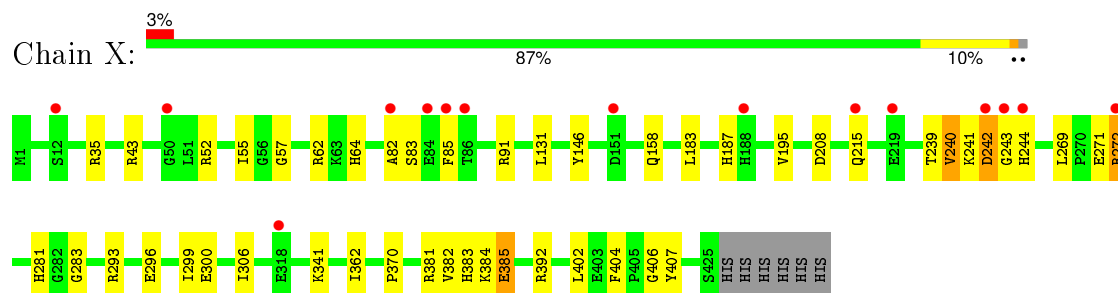
- Molecule 6 is water.

Mol	Chain	Residues	Atoms		ZeroOcc	AltConf
6	X	393	Total 393	O 393	0	91

3 Residue-property plots

These plots are drawn for all protein, RNA and DNA chains in the entry. The first graphic for a chain summarises the proportions of errors displayed in the second graphic. The second graphic shows the sequence view annotated by issues in geometry and electron density. Residues are color-coded according to the number of geometric quality criteria for which they contain at least one outlier: green = 0, yellow = 1, orange = 2 and red = 3 or more. A red dot above a residue indicates a poor fit to the electron density ($RSRZ > 2$). Stretches of 2 or more consecutive residues without any outlier are shown as a green connector. Residues present in the sample, but not in the model, are shown in grey.

- Molecule 1: 6-hydroxy-L-nicotine oxidase



4 Data and refinement statistics

Property	Value	Source
Space group	P 4 3 2	Depositor
Cell constants a, b, c, α , β , γ	163.05Å 163.05Å 163.05Å 90.00° 90.00° 90.00°	Depositor
Resolution (Å)	12.22 – 2.10 19.92 – 2.10	Depositor EDS
% Data completeness (in resolution range)	100.0 (12.22-2.10) 100.0 (19.92-2.10)	Depositor EDS
R_{merge}	0.12	Depositor
R_{sym}	(Not available)	Depositor
$\langle I/\sigma(I) \rangle$ ¹	2.37 (at 2.09Å)	Xtriage
Refinement program	REFMAC 5.2.0019	Depositor
R, R_{free}	0.159 , 0.204 0.181 , 0.213	Depositor DCC
R_{free} test set	2184 reflections (5.29%)	DCC
Wilson B-factor (Å ²)	30.3	Xtriage
Anisotropy	0.000	Xtriage
Bulk solvent k_{sol} (e/Å ³), B_{sol} (Å ²)	0.39 , 50.6	EDS
Estimated twinning fraction	No twinning to report.	Xtriage
L-test for twinning ²	$\langle L \rangle = 0.51$, $\langle L^2 \rangle = 0.34$	Xtriage
Outliers	0 of 43668 reflections	Xtriage
F_o, F_c correlation	0.96	EDS
Total number of atoms	3831	wwPDB-VP
Average B, all atoms (Å ²)	31.0	wwPDB-VP

Xtriage's analysis on translational NCS is as follows: *The largest off-origin peak in the Patterson function is 3.52% of the height of the origin peak. No significant pseudotranslation is detected.*

¹Intensities estimated from amplitudes.

²Theoretical values of $\langle |L| \rangle$, $\langle L^2 \rangle$ for acentric reflections are 0.5, 0.375 respectively for untwinned datasets, and 0.333, 0.2 for perfectly twinned datasets.

5 Model quality [i](#)

5.1 Standard geometry [i](#)

Bond lengths and bond angles in the following residue types are not validated in this section: GP7, HNM, HNL, FAD

The Z score for a bond length (or angle) is the number of standard deviations the observed value is removed from the expected value. A bond length (or angle) with $|Z| > 5$ is considered an outlier worth inspection. RMSZ is the root-mean-square of all Z scores of the bond lengths (or angles).

Mol	Chain	Bond lengths		Bond angles	
		RMSZ	$\# Z > 5$	RMSZ	$\# Z > 5$
1	X	0.91	2/3394 (0.1%)	0.71	5/4618 (0.1%)

All (2) bond length outliers are listed below:

Mol	Chain	Res	Type	Atoms	Z	Observed(Å)	Ideal(Å)
1	X	272	ARG	CG-CD	5.08	1.64	1.51
1	X	146	TYR	CD1-CE1	5.08	1.47	1.39

All (5) bond angle outliers are listed below:

Mol	Chain	Res	Type	Atoms	Z	Observed(°)	Ideal(°)
1	X	43	ARG	NE-CZ-NH1	5.87	123.23	120.30
1	X	43	ARG	NE-CZ-NH2	-5.86	117.37	120.30
1	X	272	ARG	NE-CZ-NH1	5.85	123.22	120.30
1	X	392	ARG	NE-CZ-NH1	5.27	122.93	120.30
1	X	242	ASP	CB-CG-OD2	5.19	122.97	118.30

There are no chirality outliers.

There are no planarity outliers.

5.2 Too-close contacts [i](#)

In the following table, the Non-H and H(model) columns list the number of non-hydrogen atoms and hydrogen atoms in the chain respectively. The H(added) column lists the number of hydrogen atoms added and optimized by MolProbity. The Clashes column lists the number of clashes within the asymmetric unit, whereas Symm-Clashes lists symmetry related clashes.

Mol	Chain	Non-H	H(model)	H(added)	Clashes	Symm-Clashes
1	X	3301	0	3247	66	0

Continued on next page...

Continued from previous page...

Mol	Chain	Non-H	H(model)	H(added)	Clashes	Symm-Clashes
2	X	13	0	13	1	0
3	X	53	0	31	3	0
4	X	43	0	61	2	0
5	X	28	0	26	30	0
6	X	393	0	0	22	0
All	All	3831	0	3378	75	0

The all-atom clashscore is defined as the number of clashes found per 1000 atoms (including hydrogen atoms). The all-atom clashscore for this structure is 11.

All (75) close contacts within the same asymmetric unit are listed below, sorted by their clash magnitude.

Atom-1	Atom-2	Interatomic distance (Å)	Clash overlap (Å)
1:X:85[B]:PHE:CD1	5:X:436[B]:HNM:H12	1.25	1.62
1:X:85[B]:PHE:CD1	5:X:436[B]:HNM:C12	2.16	1.29
1:X:300:GLU:OE2	5:X:436[B]:HNM:H12B	1.21	1.28
1:X:293:ARG:HD2	6:X:1139[B]:HOH:O	1.30	1.22
1:X:85[B]:PHE:CE1	5:X:436[B]:HNM:H12	1.97	1.00
1:X:300:GLU:OE2	5:X:436[B]:HNM:C12	2.11	0.98
5:X:436[B]:HNM:HN11	5:X:436[B]:HNM:C7	1.79	0.96
5:X:436[A]:HNM:O7	5:X:436[A]:HNM:H12B	1.67	0.94
1:X:85[B]:PHE:HE1	5:X:436[B]:HNM:C5	1.82	0.92
1:X:85[B]:PHE:HD1	5:X:436[B]:HNM:H12	1.12	0.92
1:X:281:HIS:HD2	1:X:283:GLY:H	1.16	0.90
5:X:436[B]:HNM:C7	5:X:436[B]:HNM:N11	2.30	0.86
1:X:341:LYS:NZ	6:X:894[A]:HOH:O	2.10	0.85
1:X:85[B]:PHE:CE1	5:X:436[B]:HNM:C5	2.62	0.83
1:X:300:GLU:CD	5:X:436[B]:HNM:H12B	1.99	0.83
1:X:239:THR:HG23	6:X:790[B]:HOH:O	1.81	0.80
5:X:436[A]:HNM:O7	5:X:436[A]:HNM:C12	2.30	0.79
4:X:435:GP7:H3	6:X:733:HOH:O	1.82	0.79
1:X:85[A]:PHE:HE2	5:X:436[A]:HNM:C4	1.96	0.77
1:X:131:LEU:H	1:X:383:HIS:HD2	1.35	0.75
1:X:85[B]:PHE:HE1	5:X:436[B]:HNM:C4	2.02	0.71
1:X:85[A]:PHE:CE2	5:X:436[A]:HNM:C4	2.75	0.70
1:X:272:ARG:CG	1:X:385:GLU:OE1	2.40	0.69
1:X:272:ARG:HG3	1:X:385:GLU:OE1	1.93	0.69
1:X:85[B]:PHE:HD1	5:X:436[B]:HNM:C12	1.82	0.68
1:X:91:ARG:NH1	6:X:796[B]:HOH:O	2.18	0.67
1:X:383:HIS:HE1	6:X:1029:HOH:O	1.77	0.67
1:X:85[B]:PHE:HE1	5:X:436[B]:HNM:C6	2.08	0.66

Continued on next page...

Continued from previous page...

Atom-1	Atom-2	Interatomic distance (Å)	Clash overlap (Å)
1:X:244[B]:HIS:HE1	6:X:1107:HOH:O	1.78	0.66
1:X:35:ARG:NH1	6:X:1131[B]:HOH:O	2.00	0.65
5:X:436[A]:HNM:O7	5:X:436[A]:HNM:N11	2.30	0.64
1:X:239:THR:HG22	6:X:1152[B]:HOH:O	1.99	0.63
1:X:85[B]:PHE:CE1	5:X:436[B]:HNM:C6	2.81	0.63
1:X:62:ARG:HD2	6:X:520[A]:HOH:O	1.98	0.63
1:X:281:HIS:CD2	1:X:283:GLY:H	2.07	0.61
1:X:85[B]:PHE:CG	5:X:436[B]:HNM:H12	2.20	0.61
1:X:57:GLY:HA2	3:X:434:FAD:C4X	2.31	0.60
1:X:85[B]:PHE:CE1	5:X:436[B]:HNM:C4	2.85	0.58
1:X:85[A]:PHE:CE2	5:X:436[A]:HNM:C5	2.87	0.58
1:X:382:VAL:HG13	1:X:382:VAL:O	2.04	0.57
1:X:35:ARG:HD2	6:X:1131[B]:HOH:O	2.04	0.57
1:X:85[B]:PHE:CG	5:X:436[B]:HNM:C12	2.84	0.57
1:X:158:GLN:NE2	6:X:442:HOH:O	2.28	0.56
1:X:183:LEU:O	1:X:187:HIS:HD2	1.89	0.56
1:X:57:GLY:HA2	3:X:434:FAD:N5	2.22	0.54
1:X:242:ASP:HB2	1:X:244[B]:HIS:ND1	2.23	0.54
1:X:82:ALA:N	6:X:1154[B]:HOH:O	2.41	0.53
5:X:436[B]:HNM:HN11	5:X:436[B]:HNM:C3	2.20	0.53
1:X:272:ARG:HD2	1:X:385:GLU:OE1	2.10	0.52
1:X:195:VAL:CG1	5:X:436[A]:HNM:H8	2.40	0.52
1:X:293:ARG:NH1	6:X:1139[B]:HOH:O	2.09	0.51
1:X:85[A]:PHE:CZ	5:X:436[A]:HNM:C5	2.94	0.50
1:X:296:GLU:HG2	1:X:299:ILE:HD11	1.93	0.50
1:X:131:LEU:H	1:X:383:HIS:CD2	2.23	0.49
1:X:195:VAL:CG1	5:X:436[B]:HNM:H8	2.41	0.49
1:X:381:ARG:NH1	6:X:1150[B]:HOH:O	2.33	0.49
5:X:436[A]:HNM:O7	5:X:436[A]:HNM:C10	2.58	0.48
1:X:244[B]:HIS:CE1	6:X:1107:HOH:O	2.60	0.48
4:X:435:GP7:C3	6:X:733:HOH:O	2.52	0.48
1:X:62:ARG:NH1	6:X:520[A]:HOH:O	2.23	0.48
1:X:406:GLY:O	3:X:434:FAD:H1'2	2.14	0.47
1:X:272:ARG:CD	1:X:385:GLU:OE1	2.64	0.46
1:X:407:TYR:CE2	2:X:433:HNL:H12	2.51	0.46
1:X:240:VAL:O	1:X:243:GLY:N	2.48	0.46
1:X:281:HIS:HD2	1:X:283:GLY:N	1.98	0.45
1:X:64:HIS:HD2	6:X:1136:HOH:O	1.99	0.45
1:X:83:SER:O	6:X:1132:HOH:O	2.21	0.44
1:X:384:LYS:HG3	1:X:402:LEU:HD11	1.98	0.44
1:X:300:GLU:OE2	5:X:436[B]:HNM:H8A	2.18	0.42

Continued on next page...

Continued from previous page...

Atom-1	Atom-2	Interatomic distance (Å)	Clash overlap (Å)
1:X:243:GLY:C	6:X:1128:HOH:O	2.57	0.42
1:X:281:HIS:HE1	6:X:590[A]:HOH:O	2.01	0.42
1:X:242:ASP:CB	1:X:244[B]:HIS:ND1	2.83	0.41
1:X:242:ASP:HB2	1:X:244[B]:HIS:CE1	2.56	0.41

There are no symmetry-related clashes.

5.3 Torsion angles [i](#)

5.3.1 Protein backbone [i](#)

In the following table, the Percentiles column shows the percent Ramachandran outliers of the chain as a percentile score with respect to all X-ray entries followed by that with respect to entries of similar resolution.

The Analysed column shows the number of residues for which the backbone conformation was analysed, and the total number of residues.

Mol	Chain	Analysed	Favoured	Allowed	Outliers	Percentiles	
1	X	428/431 (99%)	415 (97%)	12 (3%)	1 (0%)	52	53

All (1) Ramachandran outliers are listed below:

Mol	Chain	Res	Type
1	X	370	PRO

5.3.2 Protein sidechains [i](#)

In the following table, the Percentiles column shows the percent sidechain outliers of the chain as a percentile score with respect to all X-ray entries followed by that with respect to entries of similar resolution.

The Analysed column shows the number of residues for which the sidechain conformation was analysed, and the total number of residues.

Mol	Chain	Analysed	Rotameric	Outliers	Percentiles	
1	X	346/348 (99%)	333 (96%)	13 (4%)	40	40

All (13) residues with a non-rotameric sidechain are listed below:

Mol	Chain	Res	Type
1	X	52[A]	ARG
1	X	52[B]	ARG
1	X	55	ILE
1	X	208	ASP
1	X	215	GLN
1	X	240	VAL
1	X	241	LYS
1	X	269	LEU
1	X	271	GLU
1	X	306	ILE
1	X	362	ILE
1	X	385	GLU
1	X	404	PHE

Some sidechains can be flipped to improve hydrogen bonding and reduce clashes. All (8) such sidechains are listed below:

Mol	Chain	Res	Type
1	X	61	HIS
1	X	64	HIS
1	X	123	HIS
1	X	133	ASN
1	X	182	GLN
1	X	187	HIS
1	X	281	HIS
1	X	383	HIS

5.3.3 RNA ⓘ

There are no RNA molecules in this entry.

5.4 Non-standard residues in protein, DNA, RNA chains ⓘ

There are no non-standard protein/DNA/RNA residues in this entry.

5.5 Carbohydrates ⓘ

There are no carbohydrates in this entry.

5.6 Ligand geometry

5 ligands are modelled in this entry.

In the following table, the Counts columns list the number of bonds (or angles) for which Mogul statistics could be retrieved, the number of bonds (or angles) that are observed in the model and the number of bonds (or angles) that are defined in the chemical component dictionary. The Link column lists molecule types, if any, to which the group is linked. The Z score for a bond length (or angle) is the number of standard deviations the observed value is removed from the expected value. A bond length (or angle) with $|Z| > 2$ is considered an outlier worth inspection. RMSZ is the root-mean-square of all Z scores of the bond lengths (or angles).

Mol	Type	Chain	Res	Link	Bond lengths			Bond angles		
					Counts	RMSZ	# $ Z > 2$	Counts	RMSZ	# $ Z > 2$
2	HNL	X	433	-	14,14,14	1.45	2 (14%)	18,19,19	1.62	3 (16%)
3	FAD	X	434	-	48,58,58	1.71	12 (25%)	54,89,89	2.54	11 (20%)
4	GP7	X	435	-	42,42,45	1.33	4 (9%)	44,47,50	1.61	9 (20%)
5	HNM	X	436[A]	-	14,14,14	0.50	0	16,17,17	1.61	3 (18%)
5	HNM	X	436[B]	-	14,14,14	0.49	0	16,17,17	1.68	4 (25%)

In the following table, the Chirals column lists the number of chiral outliers, the number of chiral centers analysed, the number of these observed in the model and the number defined in the chemical component dictionary. Similar counts are reported in the Torsion and Rings columns. '-' means no outliers of that kind were identified.

Mol	Type	Chain	Res	Link	Chirals	Torsions	Rings
2	HNL	X	433	-	-	0/4/14/14	0/2/2/2
3	FAD	X	434	-	-	0/30/50/50	0/6/6/6
4	GP7	X	435	-	-	0/44/44/49	0/0/0/0
5	HNM	X	436[A]	-	-	0/9/9/9	0/1/1/1
5	HNM	X	436[B]	-	-	0/9/9/9	0/1/1/1

All (18) bond length outliers are listed below:

Mol	Chain	Res	Type	Atoms	Z	Observed(Å)	Ideal(Å)
3	X	434	FAD	C4-C4X	-2.24	1.36	1.41
3	X	434	FAD	C6-C7	2.04	1.43	1.37
2	X	433	HNL	C5-C6	2.06	1.44	1.40
3	X	434	FAD	C2B-C3B	2.07	1.59	1.53
3	X	434	FAD	C4X-N5	2.17	1.36	1.33
3	X	434	FAD	C9-C8	2.56	1.44	1.37
3	X	434	FAD	C5B-C4B	2.77	1.60	1.51
3	X	434	FAD	C2A-N1A	3.19	1.40	1.33
4	X	435	GP7	C43-C42	3.20	1.50	1.31

Continued on next page...

Continued from previous page...

Mol	Chain	Res	Type	Atoms	Z	Observed(Å)	Ideal(Å)
3	X	434	FAD	C5X-N5	3.21	1.40	1.35
2	X	433	HNL	C4-N1	3.22	1.41	1.34
3	X	434	FAD	C4-N3	3.29	1.39	1.33
3	X	434	FAD	O4B-C1B	3.75	1.45	1.41
4	X	435	GP7	O3-C11	3.87	1.45	1.33
4	X	435	GP7	C40-C39	3.99	1.54	1.31
4	X	435	GP7	O2-C31	4.21	1.46	1.34
3	X	434	FAD	C2A-N3A	4.22	1.39	1.32
3	X	434	FAD	C1'-N10	4.33	1.53	1.48

All (30) bond angle outliers are listed below:

Mol	Chain	Res	Type	Atoms	Z	Observed(°)	Ideal(°)
3	X	434	FAD	N3A-C2A-N1A	-14.50	117.80	128.89
2	X	433	HNL	C3-C4-N1	-4.56	118.52	124.87
3	X	434	FAD	C4-C4X-C10	-3.56	117.67	119.94
5	X	436[A]	HNM	C9-C8-C7	-3.28	107.08	113.53
5	X	436[B]	HNM	C9-C8-C7	-3.18	107.27	113.53
4	X	435	GP7	O3-C11-O11	-2.88	116.05	123.49
4	X	435	GP7	O3-C3-C2	-2.86	100.98	108.69
3	X	434	FAD	P-O3P-PA	-2.77	124.94	132.73
3	X	434	FAD	C5B-C4B-C3B	-2.45	105.50	115.21
4	X	435	GP7	C41-C42-C43	-2.34	110.53	125.00
4	X	435	GP7	O2-C31-O31	-2.30	117.49	123.67
4	X	435	GP7	C41-C40-C39	-2.26	111.00	125.00
5	X	436[B]	HNM	C5-C4-C3	-2.11	118.32	120.76
4	X	435	GP7	C44-C43-C42	-2.06	111.00	125.34
5	X	436[A]	HNM	C5-C4-C3	-2.03	118.41	120.76
3	X	434	FAD	O2A-PA-O1A	2.07	123.74	112.53
5	X	436[B]	HNM	C8-C7-C3	2.31	122.71	119.23
3	X	434	FAD	C2B-C3B-C4B	2.49	107.73	102.61
2	X	433	HNL	C2-C3-C4	2.67	119.68	116.72
3	X	434	FAD	C2B-C1B-N9A	2.73	118.47	114.29
5	X	436[A]	HNM	C12-N11-C10	2.77	120.35	112.23
2	X	433	HNL	C4-N1-C6	2.88	123.49	117.36
3	X	434	FAD	C4X-N5-C5X	2.93	120.13	116.76
5	X	436[B]	HNM	C12-N11-C10	3.16	121.49	112.23
4	X	435	GP7	C3-O3-C11	3.27	125.99	116.85
4	X	435	GP7	O3-C11-C12	3.33	122.06	111.90
3	X	434	FAD	C4-N3-C2	3.35	118.15	115.25
3	X	434	FAD	C2A-N1A-C6A	3.65	125.29	118.77
3	X	434	FAD	C4-C4X-N5	3.98	123.55	118.72

Continued on next page...

Continued from previous page...

Mol	Chain	Res	Type	Atoms	Z	Observed(°)	Ideal(°)
4	X	435	GP7	O2-C31-C32	4.44	121.19	111.53

There are no chirality outliers.

There are no torsion outliers.

There are no ring outliers.

5 monomers are involved in 36 short contacts:

Mol	Chain	Res	Type	Clashes	Symm-Clashes
2	X	433	HNL	1	0
3	X	434	FAD	3	0
4	X	435	GP7	2	0
5	X	436[A]	HNM	9	0
5	X	436[B]	HNM	21	0

5.7 Other polymers [i](#)

There are no such residues in this entry.

5.8 Polymer linkage issues [i](#)

There are no chain breaks in this entry.

6 Fit of model and data [i](#)

6.1 Protein, DNA and RNA chains [i](#)

In the following table, the column labelled ‘#RSRZ> 2’ contains the number (and percentage) of RSRZ outliers, followed by percent RSRZ outliers for the chain as percentile scores relative to all X-ray entries and entries of similar resolution. The OWAB column contains the minimum, median, 95th percentile and maximum values of the occupancy-weighted average B-factor per residue. The column labelled ‘Q< 0.9’ lists the number of (and percentage) of residues with an average occupancy less than 0.9.

Mol	Chain	Analysed	<RSRZ>	#RSRZ>2		OWAB(Å ²)	Q<0.9
1	X	425/431 (98%)	-0.15	15 (3%)	48 57	19, 29, 45, 66	3 (0%)

All (15) RSRZ outliers are listed below:

Mol	Chain	Res	Type	RSRZ
1	X	84	GLU	6.4
1	X	242	ASP	6.0
1	X	243	GLY	5.9
1	X	244[A]	HIS	5.5
1	X	188	HIS	5.1
1	X	82	ALA	4.7
1	X	50	GLY	3.3
1	X	215	GLN	2.7
1	X	272	ARG	2.6
1	X	85[A]	PHE	2.6
1	X	86	THR	2.3
1	X	219	GLU	2.3
1	X	12[A]	SER	2.2
1	X	318	GLU	2.1
1	X	151	ASP	2.0

6.2 Non-standard residues in protein, DNA, RNA chains [i](#)

There are no non-standard protein/DNA/RNA residues in this entry.

6.3 Carbohydrates [i](#)

There are no carbohydrates in this entry.

6.4 Ligands [i](#)

In the following table, the Atoms column lists the number of modelled atoms in the group and the number defined in the chemical component dictionary. LLDF column lists the quality of electron density of the group with respect to its neighbouring residues in protein, DNA or RNA chains. The B-factors column lists the minimum, median, 95th percentile and maximum values of B factors of atoms in the group. The column labelled 'Q< 0.9' lists the number of atoms with occupancy less than 0.9.

Mol	Type	Chain	Res	Atoms	RSCC	RSR	LLDF	B-factors(Å ²)	Q<0.9
4	GP7	X	435	43/46	0.85	0.30	5.91	27,45,55,59	16
5	HNM	X	436[B]	14/14	0.81	0.26	1.40	28,33,36,39	14
5	HNM	X	436[A]	14/14	0.81	0.26	1.33	24,30,40,40	14
2	HNL	X	433	13/13	0.97	0.08	-0.31	16,22,25,26	0
3	FAD	X	434	53/53	0.99	0.09	-0.51	18,22,25,31	0

6.5 Other polymers [i](#)

There are no such residues in this entry.