



Full wwPDB X-ray Structure Validation Report ⓘ

Feb 1, 2016 – 11:08 AM GMT

PDB ID : 3O64
Title : Crystal structure of catalytic domain of TACE with 2-(2-Aminothiazol-4-yl)pyrrolidine-Based Tartrate Diamides
Authors : Orth, P.
Deposited on : 2010-07-28
Resolution : 1.88 Å(reported)

This is a Full wwPDB X-ray Structure Validation Report for a publicly released PDB entry.
We welcome your comments at validation@mail.wwpdb.org
A user guide is available at
<http://wwpdb.org/validation/2016/XrayValidationReportHelp>
with specific help available everywhere you see the ⓘ symbol.

The following versions of software and data (see [references ⓘ](#)) were used in the production of this report:

MolProbity : 4.02b-467
Mogul : 1.7 (RC4), CSD as536be (2015)
Xtriage (Phenix) : 1.9-1692
EDS : rb-20026688
Percentile statistics : 20151230.v01 (using entries in the PDB archive December 30th 2015)
Refmac : 5.8.0135
CCP4 : 6.5.0
Ideal geometry (proteins) : Engh & Huber (2001)
Ideal geometry (DNA, RNA) : Parkinson et al. (1996)
Validation Pipeline (wwPDB-VP) : trunk26865

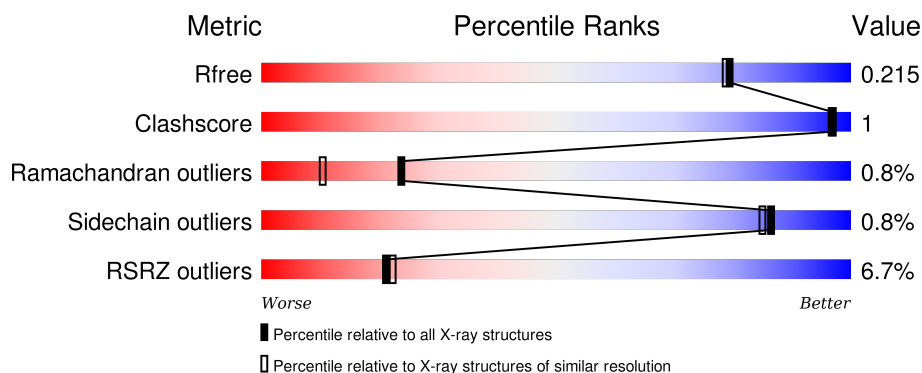
1 Overall quality at a glance

The following experimental techniques were used to determine the structure:

X-RAY DIFFRACTION

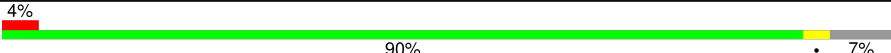
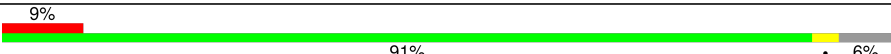
The reported resolution of this entry is 1.88 Å.

Percentile scores (ranging between 0-100) for global validation metrics of the entry are shown in the following graphic. The table shows the number of entries on which the scores are based.



Metric	Whole archive (#Entries)	Similar resolution (#Entries, resolution range(Å))
R_{free}	91344	6965 (1.90-1.86)
Clashscore	102246	7778 (1.90-1.86)
Ramachandran outliers	100387	7691 (1.90-1.86)
Sidechain outliers	100360	7692 (1.90-1.86)
RSRZ outliers	91569	6979 (1.90-1.86)

The table below summarises the geometric issues observed across the polymeric chains and their fit to the electron density. The red, orange, yellow and green segments on the lower bar indicate the fraction of residues that contain outliers for ≥ 3 , 2, 1 and 0 types of geometric quality criteria. A grey segment represents the fraction of residues that are not modelled. The numeric value for each fraction is indicated below the corresponding segment, with a dot representing fractions $\leq 5\%$. The upper red bar (where present) indicates the fraction of residues that have poor fit to the electron density. The numeric value is given above the bar.

Mol	Chain	Length	Quality of chain
1	A	270	
1	B	270	

The following table lists non-polymeric compounds, carbohydrate monomers and non-standard residues in protein, DNA, RNA chains that are outliers for geometric or electron-density-fit criteria:

Mol	Type	Chain	Res	Chirality	Geometry	Clashes	Electron density
2	IPA	B	502	-	-	-	X
2	IPA	B	505	-	-	-	X
5	CA	A	504	-	-	-	X

2 Entry composition

There are 7 unique types of molecules in this entry. The entry contains 4250 atoms, of which 0 are hydrogens and 0 are deuteriums.

In the tables below, the ZeroOcc column contains the number of atoms modelled with zero occupancy, the AltConf column contains the number of residues with at least one atom in alternate conformation and the Trace column contains the number of residues modelled with at most 2 atoms.

- Molecule 1 is a protein called TACE.

Mol	Chain	Residues	Atoms					ZeroOcc	AltConf	Trace
1	A	252	Total	C	N	O	S	0	0	0
			1961	1236	330	382	13			
1	B	253	Total	C	N	O	S	0	1	0
			1911	1209	320	369	13			

There are 22 discrepancies between the modelled and reference sequences:

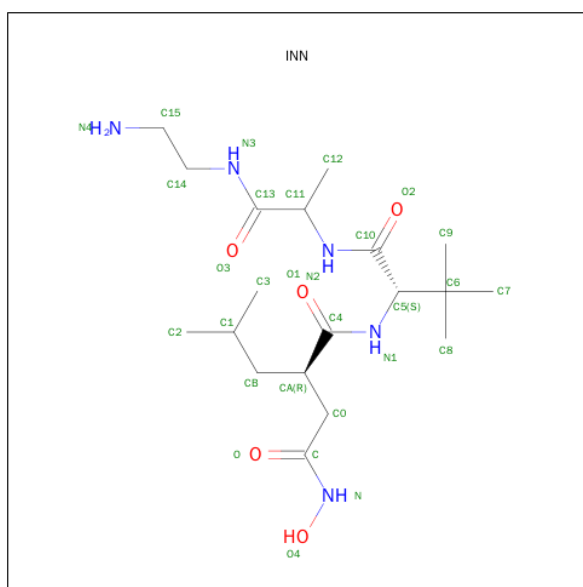
Chain	Residue	Modelled	Actual	Comment	Reference
A	266	ALA	SER	ENGINEERED MUTATION	UNP P78536
A	353	GLY	VAL	ENGINEERED MUTATION	UNP P78536
A	452	GLN	ASN	ENGINEERED MUTATION	UNP P78536
A	477	GLY	-	EXPRESSION TAG	UNP P78536
A	478	SER	-	EXPRESSION TAG	UNP P78536
A	479	HIS	-	EXPRESSION TAG	UNP P78536
A	480	HIS	-	EXPRESSION TAG	UNP P78536
A	481	HIS	-	EXPRESSION TAG	UNP P78536
A	482	HIS	-	EXPRESSION TAG	UNP P78536
A	483	HIS	-	EXPRESSION TAG	UNP P78536
A	484	HIS	-	EXPRESSION TAG	UNP P78536
B	266	ALA	SER	ENGINEERED MUTATION	UNP P78536
B	353	GLY	VAL	ENGINEERED MUTATION	UNP P78536
B	452	GLN	ASN	ENGINEERED MUTATION	UNP P78536
B	477	GLY	-	EXPRESSION TAG	UNP P78536
B	478	SER	-	EXPRESSION TAG	UNP P78536
B	479	HIS	-	EXPRESSION TAG	UNP P78536
B	480	HIS	-	EXPRESSION TAG	UNP P78536
B	481	HIS	-	EXPRESSION TAG	UNP P78536
B	482	HIS	-	EXPRESSION TAG	UNP P78536
B	483	HIS	-	EXPRESSION TAG	UNP P78536
B	484	HIS	-	EXPRESSION TAG	UNP P78536

- Molecule 2 is ISOPROPYL ALCOHOL (three-letter code: IPA) (formula: C₃H₈O).



Mol	Chain	Residues	Atoms			ZeroOcc	AltConf
2	A	1	Total	C	O	0	0
			4	3	1		
2	B	1	Total	C	O	0	0
			4	3	1		
2	B	1	Total	C	O	0	0
			4	3	1		
2	B	1	Total	C	O	0	0
			4	3	1		
2	B	1	Total	C	O	0	0
			4	3	1		

- Molecule 3 is N-{(2R)-2-[2-(HYDROXYAMINO)-2-OXOETHYL]-4-METHYLPENTANOYL}-3-METHYL-L-VALYL-N-(2-AMINOETHYL)-L-ALANINAMIDE (three-letter code: INN) (formula: C₁₉H₃₇N₅O₅).



Mol	Chain	Residues	Atoms				ZeroOcc	AltConf
3	A	1	Total	C	N	O	0	1
			29	19	5	5		

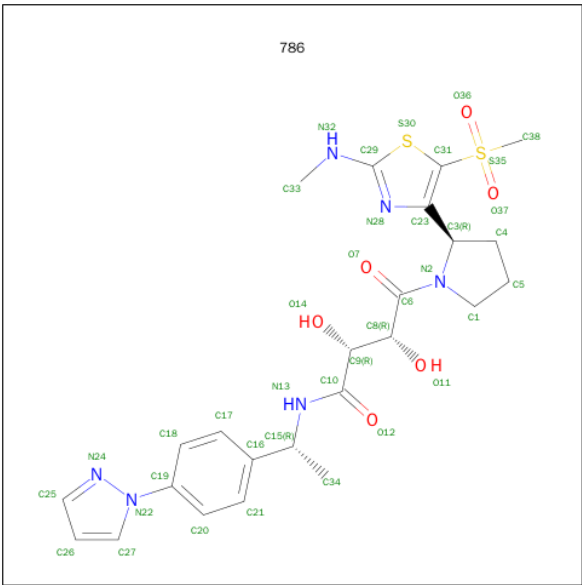
- Molecule 4 is ZINC ION (three-letter code: ZN) (formula: Zn).

Mol	Chain	Residues	Atoms		ZeroOcc	AltConf
4	B	1	Total	Zn	0	0
			1	1		
4	A	1	Total	Zn	0	0
			1	1		

- Molecule 5 is CALCIUM ION (three-letter code: CA) (formula: Ca).

Mol	Chain	Residues	Atoms		ZeroOcc	AltConf
5	A	1	Total	Ca	0	0
			1	1		

- Molecule 6 is (2R,3R)-2,3-DIHYDROXY-4-[(2R)-2-[2-(METHYLAMINO)-5-(METHYLSULFONYL)-1,3-THIAZOL-4-YL]PYRROLIDIN-1-YL]-4-OXO-N-[(1R)-1-[4-(1H-PYRAZOL-1-YL)PHENYL]ETHYL]BUTANAMIDE (three-letter code: 786) (formula: C₂₄H₃₀N₆O₆S₂).



Mol	Chain	Residues	Atoms					ZeroOcc	AltConf
6	B	1	Total	C	N	O	S	0	0
			38	24	6	6	2		

- Molecule 7 is water.

Mol	Chain	Residues	Atoms		ZeroOcc	AltConf
7	A	166	Total	O	0	0
			166	166		
7	B	122	Total	O	0	0
			122	122		

4 Data and refinement statistics

Property	Value	Source
Space group	P 21 21 21	Depositor
Cell constants a, b, c, α , β , γ	74.45Å 76.51Å 103.87Å 90.00° 90.00° 90.00°	Depositor
Resolution (Å)	19.50 – 1.88 19.36 – 1.88	Depositor EDS
% Data completeness (in resolution range)	99.6 (19.50-1.88) 99.6 (19.36-1.88)	Depositor EDS
R_{merge}	0.11	Depositor
R_{sym}	(Not available)	Depositor
$\langle I/\sigma(I) \rangle$ ¹	2.04 (at 1.87Å)	Xtriage
Refinement program	BUSTER 2.9.4	Depositor
R, R_{free}	0.188 , 0.218 0.190 , 0.215	Depositor DCC
R_{free} test set	943 reflections (1.97%)	DCC
Wilson B-factor (Å ²)	27.1	Xtriage
Anisotropy	0.137	Xtriage
Bulk solvent k_{sol} (e/Å ³), B_{sol} (Å ²)	0.34 , 53.3	EDS
Estimated twinning fraction	0.013 for k,h,-l	Xtriage
L-test for twinning ²	$\langle L \rangle = 0.50$, $\langle L^2 \rangle = 0.33$	Xtriage
Outliers	0 of 48697 reflections	Xtriage
F_o, F_c correlation	0.96	EDS
Total number of atoms	4250	wwPDB-VP
Average B, all atoms (Å ²)	37.0	wwPDB-VP

Xtriage's analysis on translational NCS is as follows: *The largest off-origin peak in the Patterson function is 5.08% of the height of the origin peak. No significant pseudotranslation is detected.*

¹Intensities estimated from amplitudes.

²Theoretical values of $\langle |L| \rangle$, $\langle L^2 \rangle$ for acentric reflections are 0.5, 0.375 respectively for untwinned datasets, and 0.333, 0.2 for perfectly twinned datasets.

5 Model quality

5.1 Standard geometry

Bond lengths and bond angles in the following residue types are not validated in this section: ZN, INN, 786, IPA, CA

The Z score for a bond length (or angle) is the number of standard deviations the observed value is removed from the expected value. A bond length (or angle) with $|Z| > 5$ is considered an outlier worth inspection. RMSZ is the root-mean-square of all Z scores of the bond lengths (or angles).

Mol	Chain	Bond lengths		Bond angles	
		RMSZ	# Z >5	RMSZ	# Z >5
1	A	0.44	0/2005	0.60	0/2710
1	B	0.43	0/1961	0.63	0/2662
All	All	0.43	0/3966	0.61	0/5372

There are no bond length outliers.

There are no bond angle outliers.

There are no chirality outliers.

There are no planarity outliers.

5.2 Too-close contacts

In the following table, the Non-H and H(model) columns list the number of non-hydrogen atoms and hydrogen atoms in the chain respectively. The H(added) column lists the number of hydrogen atoms added and optimized by MolProbity. The Clashes column lists the number of clashes within the asymmetric unit, whereas Symm-Clashes lists symmetry related clashes.

Mol	Chain	Non-H	H(model)	H(added)	Clashes	Symm-Clashes
1	A	1961	0	1840	5	0
1	B	1911	0	1752	4	0
2	A	4	0	8	0	0
2	B	16	0	32	1	0
3	A	29	0	36	4	0
4	A	1	0	0	0	0
4	B	1	0	0	0	0
5	A	1	0	0	0	0
6	B	38	0	28	1	0
7	A	166	0	0	0	0
7	B	122	0	0	0	0
All	All	4250	0	3696	10	0

The all-atom clashscore is defined as the number of clashes found per 1000 atoms (including hydrogen atoms). The all-atom clashscore for this structure is 1.

All (10) close contacts within the same asymmetric unit are listed below, sorted by their clash magnitude.

Atom-1	Atom-2	Interatomic distance (Å)	Clash overlap (Å)
1:B:269:ASN:HD21	1:B:452:GLN:HE22	1.39	0.71
1:B:269:ASN:ND2	1:B:452:GLN:HE22	2.04	0.55
1:A:390:TYR:HE2	3:A:502[B]:INN:O3	1.91	0.54
1:A:255:ILE:HG23	1:A:277:ILE:HD12	1.90	0.54
1:B:350:LEU:HD11	2:B:505:IPA:H2	1.92	0.50
1:A:439:ALA:HB3	3:A:502[B]:INN:H123	1.95	0.48
6:B:501:786:H3	6:B:501:786:C38	2.43	0.48
1:A:390:TYR:OH	3:A:502[B]:INN:H141	2.16	0.45
1:A:389:ASN:ND2	3:A:502[B]:INN:H122	2.34	0.42
1:B:441:SER:HB3	1:B:443:ASP:OD2	2.19	0.42

There are no symmetry-related clashes.

5.3 Torsion angles

5.3.1 Protein backbone

In the following table, the Percentiles column shows the percent Ramachandran outliers of the chain as a percentile score with respect to all X-ray entries followed by that with respect to entries of similar resolution.

The Analysed column shows the number of residues for which the backbone conformation was analysed, and the total number of residues.

Mol	Chain	Analysed	Favoured	Allowed	Outliers	Percentiles	
1	A	248/270 (92%)	240 (97%)	6 (2%)	2 (1%)	24	10
1	B	252/270 (93%)	243 (96%)	7 (3%)	2 (1%)	24	10
All	All	500/540 (93%)	483 (97%)	13 (3%)	4 (1%)	24	10

All (4) Ramachandran outliers are listed below:

Mol	Chain	Res	Type
1	A	441	SER
1	B	441	SER
1	A	365	CYS
1	B	365	CYS

5.3.2 Protein sidechains [i](#)

In the following table, the Percentiles column shows the percent sidechain outliers of the chain as a percentile score with respect to all X-ray entries followed by that with respect to entries of similar resolution.

The Analysed column shows the number of residues for which the sidechain conformation was analysed, and the total number of residues.

Mol	Chain	Analysed	Rotameric	Outliers	Percentiles	
1	A	204/230 (89%)	203 (100%)	1 (0%)	92	91
1	B	191/230 (83%)	189 (99%)	2 (1%)	82	79
All	All	395/460 (86%)	392 (99%)	3 (1%)	86	85

All (3) residues with a non-rotameric sidechain are listed below:

Mol	Chain	Res	Type
1	A	223	ASN
1	B	223	ASN
1	B	373	VAL

Some sidechains can be flipped to improve hydrogen bonding and reduce clashes. All (7) such sidechains are listed below:

Mol	Chain	Res	Type
1	A	223	ASN
1	A	281	GLN
1	A	471	GLN
1	B	223	ASN
1	B	359	ASN
1	B	452	GLN
1	B	471	GLN

5.3.3 RNA [i](#)

There are no RNA molecules in this entry.

5.4 Non-standard residues in protein, DNA, RNA chains [i](#)

There are no non-standard protein/DNA/RNA residues in this entry.

5.5 Carbohydrates

There are no carbohydrates in this entry.

5.6 Ligand geometry

Of 10 ligands modelled in this entry, 3 are monoatomic - leaving 7 for Mogul analysis.

In the following table, the Counts columns list the number of bonds (or angles) for which Mogul statistics could be retrieved, the number of bonds (or angles) that are observed in the model and the number of bonds (or angles) that are defined in the chemical component dictionary. The Link column lists molecule types, if any, to which the group is linked. The Z score for a bond length (or angle) is the number of standard deviations the observed value is removed from the expected value. A bond length (or angle) with $|Z| > 2$ is considered an outlier worth inspection. RMSZ is the root-mean-square of all Z scores of the bond lengths (or angles).

Mol	Type	Chain	Res	Link	Bond lengths			Bond angles		
					Counts	RMSZ	# Z > 2	Counts	RMSZ	# Z > 2
2	IPA	A	501	-	3,3,3	0.62	0	3,3,3	1.65	1 (33%)
3	INN	A	502[B]	4	28,28,28	2.02	5 (17%)	33,38,38	2.69	11 (33%)
6	786	B	501	4	36,41,41	2.00	12 (33%)	41,60,60	3.38	16 (39%)
2	IPA	B	502	-	3,3,3	0.60	0	3,3,3	1.35	1 (33%)
2	IPA	B	503	-	3,3,3	0.67	0	3,3,3	1.19	0
2	IPA	B	504	-	3,3,3	0.66	0	3,3,3	1.09	0
2	IPA	B	505	-	3,3,3	0.63	0	3,3,3	1.22	0

In the following table, the Chirals column lists the number of chiral outliers, the number of chiral centers analysed, the number of these observed in the model and the number defined in the chemical component dictionary. Similar counts are reported in the Torsion and Rings columns. '-' means no outliers of that kind were identified.

Mol	Type	Chain	Res	Link	Chirals	Torsions	Rings
2	IPA	A	501	-	-	0/0/0/0	0/0/0/0
3	INN	A	502[B]	4	-	0/40/40/40	0/0/0/0
6	786	B	501	4	-	0/28/50/50	0/4/4/4
2	IPA	B	502	-	-	0/0/0/0	0/0/0/0
2	IPA	B	503	-	-	0/0/0/0	0/0/0/0
2	IPA	B	504	-	-	0/0/0/0	0/0/0/0
2	IPA	B	505	-	-	0/0/0/0	0/0/0/0

All (17) bond length outliers are listed below:

Mol	Chain	Res	Type	Atoms	Z	Observed(Å)	Ideal(Å)
3	A	502[B]	INN	O3-C13	-5.24	1.13	1.23

Continued on next page...

Continued from previous page...

Mol	Chain	Res	Type	Atoms	Z	Observed(Å)	Ideal(Å)
3	A	502[B]	INN	C0-C	-5.18	1.41	1.51
3	A	502[B]	INN	O4-N	-4.93	1.31	1.39
6	B	501	786	C6-N2	-2.78	1.28	1.34
3	A	502[B]	INN	C11-C13	-2.67	1.45	1.52
6	B	501	786	C27-C26	-2.23	1.32	1.37
6	B	501	786	C21-C16	2.13	1.42	1.39
6	B	501	786	O7-C6	2.17	1.26	1.22
6	B	501	786	C29-N32	2.18	1.38	1.35
3	A	502[B]	INN	C6-C5	2.33	1.59	1.55
6	B	501	786	C20-C21	2.56	1.43	1.38
6	B	501	786	C9-C8	2.85	1.57	1.53
6	B	501	786	C31-S30	2.88	1.77	1.72
6	B	501	786	O14-C9	3.61	1.49	1.42
6	B	501	786	C17-C16	3.62	1.45	1.39
6	B	501	786	C26-C25	3.85	1.47	1.37
6	B	501	786	C23-C3	4.31	1.55	1.51

All (29) bond angle outliers are listed below:

Mol	Chain	Res	Type	Atoms	Z	Observed(°)	Ideal(°)
6	B	501	786	C33-N32-C29	-16.83	108.69	122.89
3	A	502[B]	INN	O1-C4-CA	-5.35	115.18	122.12
6	B	501	786	O37-S35-O36	-4.83	107.66	117.73
6	B	501	786	C27-N22-N24	-4.60	108.77	111.94
6	B	501	786	C9-C8-C6	-4.46	103.06	109.62
3	A	502[B]	INN	O3-C13-C11	-4.45	109.80	120.45
3	A	502[B]	INN	O-C-C0	-4.01	115.44	121.30
6	B	501	786	O36-S35-C31	-3.06	103.64	108.13
6	B	501	786	O14-C9-C8	-2.94	104.66	110.18
3	A	502[B]	INN	C7-C6-C8	-2.91	102.83	108.75
6	B	501	786	C1-N2-C3	-2.86	107.77	112.00
3	A	502[B]	INN	C6-C5-N1	-2.78	109.26	112.34
3	A	502[B]	INN	O2-C10-C5	-2.66	117.21	121.16
6	B	501	786	O11-C8-C6	-2.59	104.42	108.53
2	A	501	IPA	O2-C2-C3	-2.50	92.24	110.42
6	B	501	786	C18-C17-C16	-2.05	119.09	121.20
2	B	502	IPA	O2-C2-C3	-2.04	95.56	110.42
3	A	502[B]	INN	C7-C6-C5	2.07	114.04	109.75
6	B	501	786	C17-C18-C19	2.12	121.39	119.23
3	A	502[B]	INN	C10-C5-N1	2.13	113.48	108.94
6	B	501	786	O36-S35-C38	2.75	113.03	108.53
3	A	502[B]	INN	C6-C5-C10	2.94	115.79	112.83

Continued on next page...

Continued from previous page...

Mol	Chain	Res	Type	Atoms	Z	Observed(°)	Ideal(°)
6	B	501	786	C26-C27-N22	2.94	109.44	107.07
6	B	501	786	C27-N22-C19	2.99	128.87	124.48
6	B	501	786	C25-N24-N22	3.49	106.33	103.70
6	B	501	786	C5-C1-N2	3.78	109.14	103.25
6	B	501	786	C19-N22-N24	3.93	122.36	118.89
3	A	502[B]	INN	C11-C13-N3	4.54	126.34	116.43
3	A	502[B]	INN	O-C-N	9.47	134.73	123.53

There are no chirality outliers.

There are no torsion outliers.

There are no ring outliers.

3 monomers are involved in 6 short contacts:

Mol	Chain	Res	Type	Clashes	Symm-Clashes
3	A	502[B]	INN	4	0
6	B	501	786	1	0
2	B	505	IPA	1	0

5.7 Other polymers [i](#)

There are no such residues in this entry.

5.8 Polymer linkage issues [i](#)

There are no chain breaks in this entry.

6 Fit of model and data ⓘ

6.1 Protein, DNA and RNA chains ⓘ

In the following table, the column labelled ‘#RSRZ> 2’ contains the number (and percentage) of RSRZ outliers, followed by percent RSRZ outliers for the chain as percentile scores relative to all X-ray entries and entries of similar resolution. The OWAB column contains the minimum, median, 95th percentile and maximum values of the occupancy-weighted average B-factor per residue. The column labelled ‘Q< 0.9’ lists the number of (and percentage) of residues with an average occupancy less than 0.9.

Mol	Chain	Analysed	<RSRZ>	#RSRZ>2	OWAB(Å ²)	Q<0.9
1	A	252/270 (93%)	0.08	10 (3%) 42 44	18, 29, 56, 80	0
1	B	253/270 (93%)	0.42	24 (9%) 10 11	19, 40, 77, 108	0
All	All	505/540 (93%)	0.25	34 (6%) 21 22	18, 35, 65, 108	0

All (34) RSRZ outliers are listed below:

Mol	Chain	Res	Type	RSRZ
1	A	441	SER	5.5
1	A	217	ASP	5.2
1	B	441	SER	4.7
1	B	356	PRO	4.6
1	B	466	ALA	4.1
1	B	440	VAL	4.0
1	B	221	MET	3.9
1	A	361	HIS	3.6
1	A	345	MET	3.5
1	B	359	ASN	3.4
1	A	428	ASP	3.4
1	B	287	SER	3.3
1	B	238	TYR	3.3
1	B	305	PRO	3.2
1	A	221	MET	3.2
1	B	294	GLY	3.1
1	B	309	LYS	3.1
1	B	442	GLY	3.1
1	A	440	VAL	3.0
1	B	293	PRO	2.8
1	A	294	GLY	2.7
1	A	271	GLY	2.7
1	B	304	TYR	2.6
1	A	293	PRO	2.6

Continued on next page...

Continued from previous page...

Mol	Chain	Res	Type	RSRZ
1	B	375	LYS	2.5
1	B	464	SER	2.5
1	B	295	GLU	2.4
1	B	458	ILE	2.4
1	B	462	ILE	2.2
1	B	459	TYR	2.2
1	B	271	GLY	2.1
1	B	355	SER	2.1
1	B	429	GLN	2.0
1	B	426	ASN	2.0

6.2 Non-standard residues in protein, DNA, RNA chains [i](#)

There are no non-standard protein/DNA/RNA residues in this entry.

6.3 Carbohydrates [i](#)

There are no carbohydrates in this entry.

6.4 Ligands [i](#)

In the following table, the Atoms column lists the number of modelled atoms in the group and the number defined in the chemical component dictionary. LLDF column lists the quality of electron density of the group with respect to its neighbouring residues in protein, DNA or RNA chains. The B-factors column lists the minimum, median, 95th percentile and maximum values of B factors of atoms in the group. The column labelled 'Q< 0.9' lists the number of atoms with occupancy less than 0.9.

Mol	Type	Chain	Res	Atoms	RSCC	RSR	LLDF	B-factors(Å ²)	Q<0.9
2	IPA	B	502	4/4	0.94	0.23	5.67	57,58,58,58	0
5	CA	A	504	1/1	0.98	0.20	3.94	39,39,39,39	0
2	IPA	B	505	4/4	0.81	0.27	3.24	53,54,55,57	0
3	INN	A	502[B]	29/29	0.89	0.17	1.25	22,33,56,60	0
2	IPA	A	501	4/4	0.93	0.11	0.40	32,34,36,37	0
6	786	B	501	38/38	0.92	0.12	-0.04	22,28,52,55	0
2	IPA	B	504	4/4	0.85	0.17	-0.10	57,57,57,58	0
4	ZN	B	506	1/1	1.00	0.04	-2.82	24,24,24,24	0
2	IPA	B	503	4/4	0.77	0.23	-	64,66,66,66	0
4	ZN	A	503	1/1	1.00	0.05	-	22,22,22,22	0

6.5 Other polymers

There are no such residues in this entry.