



Full wwPDB X-ray Structure Validation Report ⓘ

Feb 1, 2016 – 04:51 AM GMT

PDB ID : 2OGD
Title : T. Brucei Farnesyl Diphosphate Synthase Complexed with Bisphosphonate BPH-527
Authors : Cao, R.; Gao, Y.; Robinson, H.; Goddard, A.; Oldfield, E.
Deposited on : 2007-01-05
Resolution : 2.00 Å(reported)

This is a Full wwPDB X-ray Structure Validation Report for a publicly released PDB entry.
We welcome your comments at validation@mail.wwpdb.org
A user guide is available at
<http://wwpdb.org/validation/2016/XrayValidationReportHelp>
with specific help available everywhere you see the ⓘ symbol.

The following versions of software and data (see [references ⓘ](#)) were used in the production of this report:

MolProbity : 4.02b-467
Mogul : 1.7 (RC4), CSD as536be (2015)
Xtriage (Phenix) : 1.9-1692
EDS : rb-20026688
Percentile statistics : 20151230.v01 (using entries in the PDB archive December 30th 2015)
Refmac : 5.8.0135
CCP4 : 6.5.0
Ideal geometry (proteins) : Engh & Huber (2001)
Ideal geometry (DNA, RNA) : Parkinson et al. (1996)
Validation Pipeline (wwPDB-VP) : trunk26865

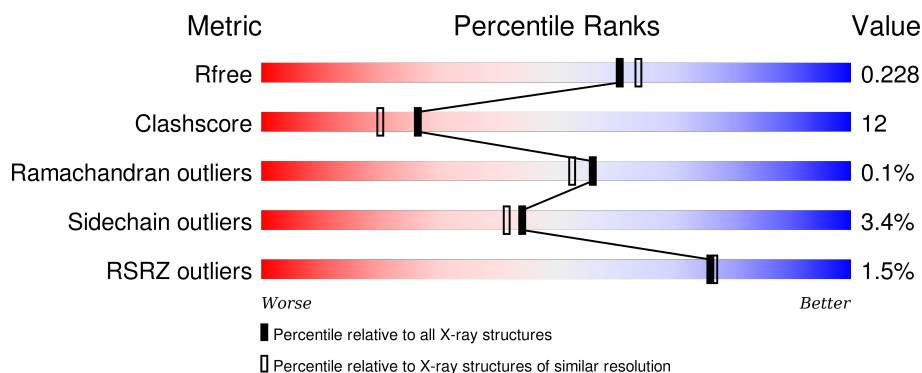
1 Overall quality at a glance

The following experimental techniques were used to determine the structure:

X-RAY DIFFRACTION

The reported resolution of this entry is 2.00 Å.

Percentile scores (ranging between 0-100) for global validation metrics of the entry are shown in the following graphic. The table shows the number of entries on which the scores are based.



Metric	Whole archive (#Entries)	Similar resolution (#Entries, resolution range(Å))
R_{free}	91344	6249 (2.00-2.00)
Clashscore	102246	7340 (2.00-2.00)
Ramachandran outliers	100387	7248 (2.00-2.00)
Sidechain outliers	100360	7247 (2.00-2.00)
RSRZ outliers	91569	6262 (2.00-2.00)

The table below summarises the geometric issues observed across the polymeric chains and their fit to the electron density. The red, orange, yellow and green segments on the lower bar indicate the fraction of residues that contain outliers for ≥ 3 , 2, 1 and 0 types of geometric quality criteria. A grey segment represents the fraction of residues that are not modelled. The numeric value for each fraction is indicated below the corresponding segment, with a dot representing fractions $\leq 5\%$. The upper red bar (where present) indicates the fraction of residues that have poor fit to the electron density. The numeric value is given above the bar.

Mol	Chain	Length	Quality of chain
1	A	390	<div> <div>2%</div> <div>69%</div> <div>22%</div> <div>8%</div> </div>
1	B	390	<div> <div>%</div> <div>71%</div> <div>20%</div> <div>8%</div> </div>

The following table lists non-polymeric compounds, carbohydrate monomers and non-standard residues in protein, DNA, RNA chains that are outliers for geometric or electron-density-fit criteria:

Mol	Type	Chain	Res	Chirality	Geometry	Clashes	Electron density
2	ACT	A	8003	-	-	X	X
2	ACT	A	8004	-	-	-	X
2	ACT	B	8001	-	-	X	-
3	MG	B	4003	-	-	-	X
6	MPD	A	7001	-	-	-	X

2 Entry composition

There are 7 unique types of molecules in this entry. The entry contains 6370 atoms, of which 0 are hydrogens and 0 are deuteriums.

In the tables below, the ZeroOcc column contains the number of atoms modelled with zero occupancy, the AltConf column contains the number of residues with at least one atom in alternate conformation and the Trace column contains the number of residues modelled with at most 2 atoms.

- Molecule 1 is a protein called Farnesyl pyrophosphate synthase.

Mol	Chain	Residues	Atoms					ZeroOcc	AltConf	Trace
1	A	358	Total	C	N	O	S	0	0	0
			2864	1826	472	538	28			
1	B	359	Total	C	N	O	S	0	0	0
			2872	1830	474	540	28			

There are 46 discrepancies between the modelled and reference sequences:

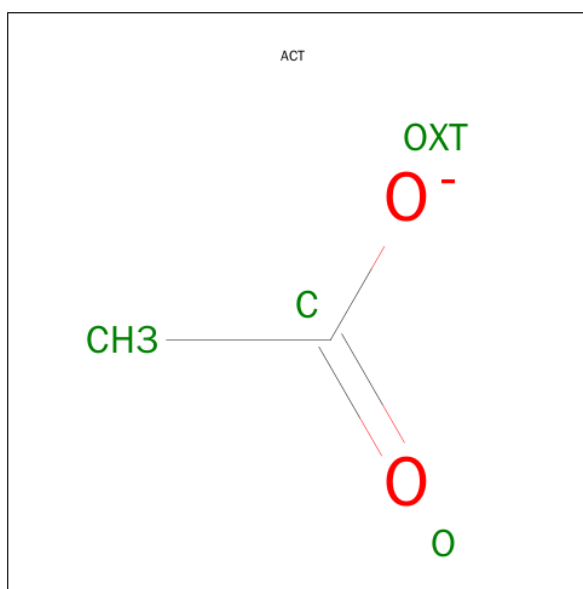
Chain	Residue	Modelled	Actual	Comment	Reference
A	-22	MET	-	EXPRESSION TAG	UNP Q86C09
A	-21	GLY	-	EXPRESSION TAG	UNP Q86C09
A	-20	SER	-	EXPRESSION TAG	UNP Q86C09
A	-19	SER	-	EXPRESSION TAG	UNP Q86C09
A	-18	HIS	-	EXPRESSION TAG	UNP Q86C09
A	-17	HIS	-	EXPRESSION TAG	UNP Q86C09
A	-16	HIS	-	EXPRESSION TAG	UNP Q86C09
A	-15	HIS	-	EXPRESSION TAG	UNP Q86C09
A	-14	HIS	-	EXPRESSION TAG	UNP Q86C09
A	-13	HIS	-	EXPRESSION TAG	UNP Q86C09
A	-12	SER	-	EXPRESSION TAG	UNP Q86C09
A	-11	SER	-	EXPRESSION TAG	UNP Q86C09
A	-10	GLY	-	EXPRESSION TAG	UNP Q86C09
A	-9	LEU	-	EXPRESSION TAG	UNP Q86C09
A	-8	VAL	-	EXPRESSION TAG	UNP Q86C09
A	-7	PRO	-	EXPRESSION TAG	UNP Q86C09
A	-6	ARG	-	EXPRESSION TAG	UNP Q86C09
A	-5	GLY	-	EXPRESSION TAG	UNP Q86C09
A	-4	SER	-	EXPRESSION TAG	UNP Q86C09
A	-3	HIS	-	EXPRESSION TAG	UNP Q86C09
A	-2	MET	-	EXPRESSION TAG	UNP Q86C09
A	-1	ALA	-	EXPRESSION TAG	UNP Q86C09
A	0	SER	-	EXPRESSION TAG	UNP Q86C09
B	-22	MET	-	EXPRESSION TAG	UNP Q86C09
B	-21	GLY	-	EXPRESSION TAG	UNP Q86C09

Continued on next page...

Continued from previous page...

Chain	Residue	Modelled	Actual	Comment	Reference
B	-20	SER	-	EXPRESSION TAG	UNP Q86C09
B	-19	SER	-	EXPRESSION TAG	UNP Q86C09
B	-18	HIS	-	EXPRESSION TAG	UNP Q86C09
B	-17	HIS	-	EXPRESSION TAG	UNP Q86C09
B	-16	HIS	-	EXPRESSION TAG	UNP Q86C09
B	-15	HIS	-	EXPRESSION TAG	UNP Q86C09
B	-14	HIS	-	EXPRESSION TAG	UNP Q86C09
B	-13	HIS	-	EXPRESSION TAG	UNP Q86C09
B	-12	SER	-	EXPRESSION TAG	UNP Q86C09
B	-11	SER	-	EXPRESSION TAG	UNP Q86C09
B	-10	GLY	-	EXPRESSION TAG	UNP Q86C09
B	-9	LEU	-	EXPRESSION TAG	UNP Q86C09
B	-8	VAL	-	EXPRESSION TAG	UNP Q86C09
B	-7	PRO	-	EXPRESSION TAG	UNP Q86C09
B	-6	ARG	-	EXPRESSION TAG	UNP Q86C09
B	-5	GLY	-	EXPRESSION TAG	UNP Q86C09
B	-4	SER	-	EXPRESSION TAG	UNP Q86C09
B	-3	HIS	-	EXPRESSION TAG	UNP Q86C09
B	-2	MET	-	EXPRESSION TAG	UNP Q86C09
B	-1	ALA	-	EXPRESSION TAG	UNP Q86C09
B	0	SER	-	EXPRESSION TAG	UNP Q86C09

- Molecule 2 is ACETATE ION (three-letter code: ACT) (formula: C₂H₃O₂).



Mol	Chain	Residues	Atoms			ZeroOcc	AltConf
2	A	1	Total	C	O	0	0
			4	2	2		

Continued on next page...

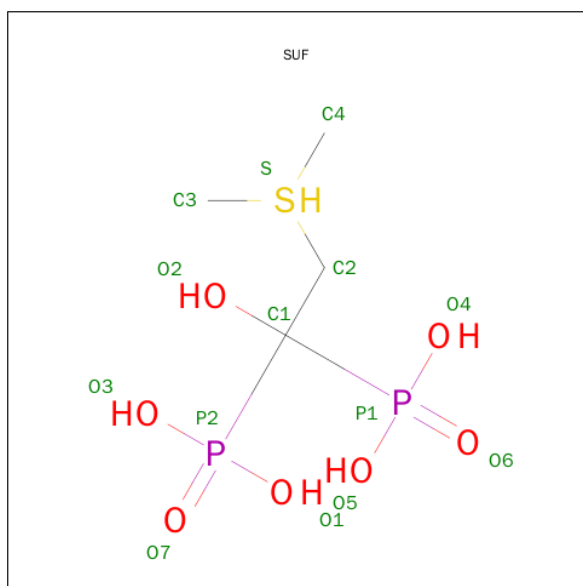
Continued from previous page...

Mol	Chain	Residues	Atoms			ZeroOcc	AltConf
2	A	1	Total	C	O	0	0
			4	2	2		
2	B	1	Total	C	O	0	0
			4	2	2		
2	B	1	Total	C	O	0	0
			4	2	2		

- Molecule 3 is MAGNESIUM ION (three-letter code: MG) (formula: Mg).

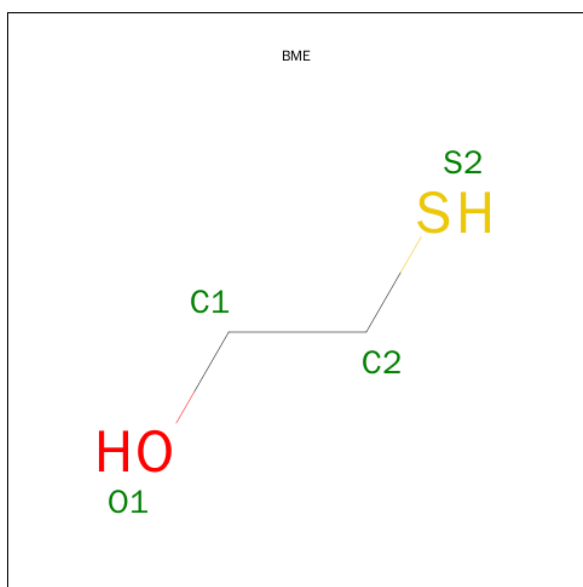
Mol	Chain	Residues	Atoms		ZeroOcc	AltConf
3	B	3	Total	Mg	0	0
			3	3		
3	A	3	Total	Mg	0	0
			3	3		

- Molecule 4 is [2-(DIMETHYL-LAMBDA 4 -SULFANYL)-1-HYDROXYETHANE-1,1-DIYL]BIS(PHOSPHONIC ACID) (three-letter code: SUF) (formula: C₄H₁₄O₇P₂S).



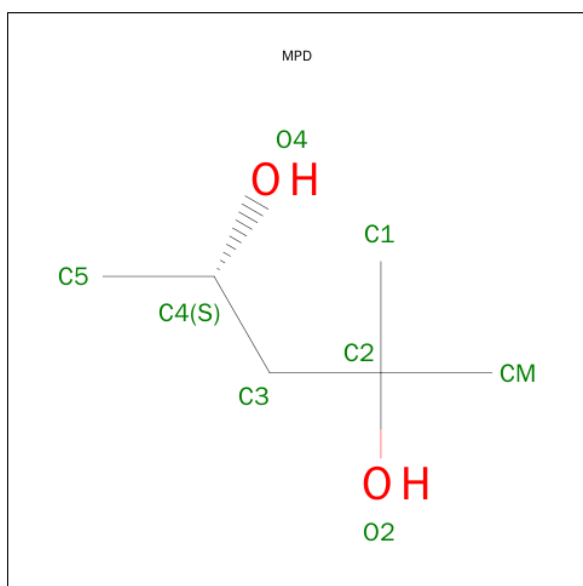
Mol	Chain	Residues	Atoms					ZeroOcc	AltConf
4	A	1	Total	C	O	P	S	0	0
			14	4	7	2	1		
4	B	1	Total	C	O	P	S	0	0
			14	4	7	2	1		

- Molecule 5 is BETA-MERCAPTOETHANOL (three-letter code: BME) (formula: C₂H₆OS).



Mol	Chain	Residues	Atoms				ZeroOcc	AltConf
5	B	1	Total	C	O	S	0	0
			4	2	1	1		
5	A	1	Total	C	O	S	0	0
			4	2	1	1		
5	B	1	Total	C	O	S	0	0
			4	2	1	1		

- Molecule 6 is (4S)-2-METHYL-2,4-PENTANEDIOL (three-letter code: MPD) (formula: C₆H₁₄O₂).

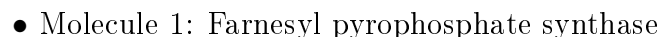


Mol	Chain	Residues	Atoms			ZeroOcc	AltConf
6	A	1	Total	C	O	0	0
			8	6	2		

- Molecule 7 is water.

Mol	Chain	Residues	Atoms		ZeroOcc	AltConf
7	A	246	Total	O	0	0
			246	246		
7	B	318	Total	O	0	0
			318	318		

- Molecule 1: Farnesyl pyrophosphate synthase



4 Data and refinement statistics

Property	Value	Source
Space group	C 1 2 1	Depositor
Cell constants a, b, c, α , β , γ	134.61Å 118.37Å 62.76Å 90.00° 112.16° 90.00°	Depositor
Resolution (Å)	30.00 – 2.00 29.99 – 2.00	Depositor EDS
% Data completeness (in resolution range)	96.5 (30.00-2.00) 96.3 (29.99-2.00)	Depositor EDS
R_{merge}	0.08	Depositor
R_{sym}	(Not available)	Depositor
$\langle I/\sigma(I) \rangle$ ¹	4.42 (at 2.00Å)	Xtriage
Refinement program	CNS 1.1	Depositor
R, R_{free}	0.193 , 0.229 0.193 , 0.228	Depositor DCC
R_{free} test set	1780 reflections (3.00%)	DCC
Wilson B-factor (Å ²)	22.9	Xtriage
Anisotropy	0.497	Xtriage
Bulk solvent k_{sol} (e/Å ³), B_{sol} (Å ²)	0.33 , 49.9	EDS
Estimated twinning fraction	No twinning to report.	Xtriage
L-test for twinning ²	$\langle L \rangle = 0.48$, $\langle L^2 \rangle = 0.31$	Xtriage
Outliers	0 of 61155 reflections	Xtriage
F_o, F_c correlation	0.95	EDS
Total number of atoms	6370	wwPDB-VP
Average B, all atoms (Å ²)	28.0	wwPDB-VP

Xtriage's analysis on translational NCS is as follows: *The largest off-origin peak in the Patterson function is 5.99% of the height of the origin peak. No significant pseudotranslation is detected.*

¹Intensities estimated from amplitudes.

²Theoretical values of $\langle |L| \rangle$, $\langle L^2 \rangle$ for acentric reflections are 0.5, 0.375 respectively for untwinned datasets, and 0.333, 0.2 for perfectly twinned datasets.

5 Model quality

5.1 Standard geometry

Bond lengths and bond angles in the following residue types are not validated in this section: SUF, MG, ACT, MPD, BME

The Z score for a bond length (or angle) is the number of standard deviations the observed value is removed from the expected value. A bond length (or angle) with $|Z| > 5$ is considered an outlier worth inspection. RMSZ is the root-mean-square of all Z scores of the bond lengths (or angles).

Mol	Chain	Bond lengths		Bond angles	
		RMSZ	$\# Z > 5$	RMSZ	$\# Z > 5$
1	A	0.36	0/2923	0.56	0/3952
1	B	0.37	0/2931	0.56	0/3963
All	All	0.37	0/5854	0.56	0/7915

There are no bond length outliers.

There are no bond angle outliers.

There are no chirality outliers.

There are no planarity outliers.

5.2 Too-close contacts

In the following table, the Non-H and H(model) columns list the number of non-hydrogen atoms and hydrogen atoms in the chain respectively. The H(added) column lists the number of hydrogen atoms added and optimized by MolProbity. The Clashes column lists the number of clashes within the asymmetric unit, whereas Symm-Clashes lists symmetry related clashes.

Mol	Chain	Non-H	H(model)	H(added)	Clashes	Symm-Clashes
1	A	2864	0	2824	72	0
1	B	2872	0	2830	78	0
2	A	8	0	6	3	0
2	B	8	0	6	5	0
3	A	3	0	0	0	0
3	B	3	0	0	0	0
4	A	14	0	10	0	0
4	B	14	0	10	1	0
5	A	4	0	6	1	0
5	B	8	0	12	3	0
6	A	8	0	14	0	0

Continued on next page...

Continued from previous page...

Mol	Chain	Non-H	H(model)	H(added)	Clashes	Symm-Clashes
7	A	246	0	0	7	1
7	B	318	0	0	8	0
All	All	6370	0	5718	141	1

The all-atom clashscore is defined as the number of clashes found per 1000 atoms (including hydrogen atoms). The all-atom clashscore for this structure is 12.

All (141) close contacts within the same asymmetric unit are listed below, sorted by their clash magnitude.

Atom-1	Atom-2	Interatomic distance (Å)	Clash overlap (Å)
1:B:365:ARG:HH21	1:B:367:LYS:HG3	1.21	1.05
1:A:113:ARG:HE	2:A:8003:ACT:H3	1.26	0.98
1:B:365:ARG:NH2	1:B:367:LYS:HG3	1.94	0.82
1:B:42:THR:HG21	1:B:136:LEU:HD11	1.65	0.79
1:A:47:LYS:HD3	1:A:367:LYS:HD2	1.64	0.79
1:B:42:THR:CG2	1:B:97:ALA:HB1	2.13	0.77
1:B:42:THR:HG21	1:B:136:LEU:CD1	2.15	0.77
1:A:365:ARG:HB2	1:A:367:LYS:HE3	1.65	0.77
1:A:186:ASP:O	1:B:123:ASP:CB	2.35	0.74
1:A:123:ASP:CB	1:B:186:ASP:O	2.39	0.70
1:A:64:LEU:HD21	7:A:9215:HOH:O	1.90	0.70
1:A:306:ASP:OD1	1:A:308:GLU:HG2	1.92	0.70
1:B:315:ARG:O	1:B:319:GLU:HG3	1.93	0.69
1:A:151:ARG:HG2	1:A:153:PHE:CZ	2.27	0.69
1:B:4:GLN:O	1:B:8:GLN:HG3	1.95	0.67
1:B:254:GLN:OE1	1:B:365:ARG:HD3	1.95	0.66
1:B:367:LYS:C	1:B:367:LYS:HD3	2.16	0.66
1:B:347:CYS:CB	5:B:9003:BME:HS2	2.09	0.65
1:B:260:CYS:SG	1:B:314:ARG:HG2	2.37	0.65
1:B:159:CYS:SG	5:B:9002:BME:S2	2.49	0.65
1:A:218:TYR:CE2	1:A:247:MET:HE2	2.31	0.65
1:A:61:LEU:HD11	1:A:226:LEU:HD23	1.79	0.65
1:A:64:LEU:HD23	1:A:64:LEU:O	1.96	0.64
1:A:25:PHE:HE1	1:B:167:THR:HG22	1.62	0.64
1:B:306:ASP:O	1:B:310:VAL:HG13	1.98	0.64
1:A:209:VAL:HG22	1:A:252:GLN:HG2	1.80	0.63
1:A:61:LEU:CD1	1:A:226:LEU:HD23	2.29	0.63
1:B:163:ARG:O	1:B:167:THR:HG23	1.98	0.62
1:A:25:PHE:CE1	1:B:167:THR:HG22	2.35	0.62
1:B:160:ARG:HD2	1:B:227:ILE:HD11	1.80	0.62
1:A:163:ARG:O	1:A:167:THR:HG23	1.99	0.62

Continued on next page...

Continued from previous page...

Atom-1	Atom-2	Interatomic distance (Å)	Clash overlap (Å)
1:B:42:THR:HG22	1:B:97:ALA:HB1	1.81	0.62
1:A:365:ARG:HH11	1:A:367:LYS:HG3	1.64	0.61
1:B:347:CYS:SG	5:B:9003:BME:S2	2.88	0.61
1:B:22:GLU:HG3	7:B:9110:HOH:O	2.00	0.61
1:A:315:ARG:O	1:A:319:GLU:HG3	2.01	0.61
1:A:47:LYS:CD	1:A:367:LYS:HD2	2.31	0.61
1:A:297:GLU:HG2	1:A:316:LEU:HD11	1.83	0.61
1:B:191:GLN:HE21	1:B:192:PRO:HD2	1.66	0.60
1:B:339:GLU:HG3	7:B:9063:HOH:O	2.02	0.59
1:B:243:LEU:HG	1:B:340:LEU:HB3	1.85	0.58
1:B:50:ARG:HH22	2:B:8001:ACT:H1	1.68	0.58
1:B:57:VAL:O	1:B:61:LEU:HD23	2.04	0.58
1:B:38:MET:O	1:B:42:THR:HB	2.04	0.58
1:B:42:THR:HG23	1:B:97:ALA:HB1	1.86	0.58
1:B:28:ASP:O	1:B:32:VAL:HG23	2.03	0.57
1:B:314:ARG:O	1:B:318:GLU:HG3	2.04	0.57
1:B:209:VAL:HG22	1:B:252:GLN:HG2	1.86	0.57
1:A:98:HIS:CD2	1:A:137:LYS:HE3	2.39	0.57
1:B:267:LEU:HG	1:B:269:LYS:HG2	1.87	0.57
1:B:50:ARG:HH22	2:B:8001:ACT:CH3	2.19	0.56
1:B:50:ARG:HH12	2:B:8001:ACT:H1	1.71	0.56
1:A:332:ALA:O	1:A:336:GLN:HG3	2.05	0.56
1:A:183:ASN:ND2	1:B:30:ASN:HD21	2.03	0.56
1:B:19:GLU:O	1:B:23:LEU:HD22	2.06	0.56
1:A:113:ARG:NE	2:A:8003:ACT:H3	2.09	0.55
1:A:59:GLU:O	1:A:62:LEU:HG	2.05	0.55
1:A:365:ARG:HH11	1:A:367:LYS:CG	2.19	0.55
1:A:160:ARG:HD2	1:A:227:ILE:HD11	1.89	0.54
1:B:73:ASP:HB3	7:B:9252:HOH:O	2.08	0.53
1:A:77:ARG:O	1:A:81:VAL:HG23	2.08	0.53
1:A:367:LYS:H	1:A:367:LYS:HD3	1.74	0.53
1:B:100:LEU:HG	1:B:112:ARG:CZ	2.39	0.52
1:A:4:GLN:O	1:A:8:GLN:HG3	2.08	0.52
1:A:189:VAL:O	1:B:123:ASP:CB	2.57	0.52
1:A:241:GLU:O	1:A:245:MET:HG2	2.10	0.52
2:B:8002:ACT:H3	7:B:9026:HOH:O	2.11	0.51
1:A:340:LEU:HD23	1:A:343:LYS:HE2	1.93	0.51
1:B:241:GLU:O	1:B:245:MET:HG2	2.11	0.50
1:A:265:GLU:CD	1:A:265:GLU:H	2.14	0.50
1:A:61:LEU:HD21	1:A:351:PHE:HB2	1.94	0.50
1:A:98:HIS:NE2	1:A:137:LYS:HE3	2.27	0.50

Continued on next page...

Continued from previous page...

Atom-1	Atom-2	Interatomic distance (Å)	Clash overlap (Å)
1:B:47:LYS:NZ	1:B:367:LYS:CG	2.75	0.50
1:B:96:GLN:HE22	2:B:8001:ACT:H1	1.76	0.50
1:A:334:ALA:O	1:A:338:LYS:HE3	2.12	0.50
1:B:277:ALA:HA	1:B:302:TYR:CE2	2.47	0.50
1:A:210:LYS:O	1:A:214:ALA:HB3	2.12	0.50
1:B:258:MET:CE	1:B:367:LYS:HB3	2.42	0.49
1:B:317:TYR:HB3	1:B:322:LEU:HD12	1.94	0.49
1:B:10:TYR:HB2	1:B:90:TRP:CZ2	2.47	0.49
1:A:47:LYS:HE3	1:A:367:LYS:HG3	1.94	0.49
1:B:220:LEU:HB3	1:B:221:PRO:HD3	1.95	0.49
1:A:209:VAL:HG11	1:A:249:GLU:HA	1.94	0.49
1:B:366:GLN:O	1:B:367:LYS:OXT	2.30	0.48
1:A:314:ARG:O	1:A:318:GLU:HG2	2.12	0.48
1:A:290:ALA:HB1	1:A:294:GLN:HB2	1.94	0.48
1:A:367:LYS:N	1:A:367:LYS:HD3	2.28	0.48
1:A:209:VAL:CG1	1:A:249:GLU:HA	2.43	0.48
1:B:59:GLU:O	1:B:62:LEU:HB2	2.15	0.47
1:A:123:ASP:CB	1:B:189:VAL:O	2.62	0.47
1:A:232:LEU:N	1:A:233:PRO:HD2	2.29	0.47
1:A:247:MET:HE1	1:A:359:TRP:HA	1.96	0.47
1:B:47:LYS:NZ	1:B:367:LYS:HG2	2.30	0.47
1:A:10:TYR:HB2	1:A:90:TRP:CZ2	2.50	0.47
1:A:315:ARG:NH1	7:A:9242:HOH:O	2.43	0.47
1:A:157:LEU:HD21	1:A:224:MET:HE2	1.97	0.46
1:A:277:ALA:HA	1:A:302:TYR:CE2	2.50	0.46
1:A:127:GLN:HG2	1:A:128:CYS:N	2.31	0.46
1:B:315:ARG:HH11	1:B:315:ARG:HG2	1.81	0.46
1:A:209:VAL:HG22	1:A:252:GLN:CG	2.45	0.45
1:B:246:LEU:HD21	1:B:336:GLN:HB2	1.98	0.45
1:B:315:ARG:NH1	1:B:319:GLU:OE2	2.49	0.45
1:A:146:HIS:HD2	7:A:9178:HOH:O	1.99	0.45
1:A:15:MET:O	1:A:19:GLU:HG3	2.16	0.45
1:B:209:VAL:HG11	1:B:249:GLU:HA	1.99	0.45
1:B:61:LEU:N	1:B:61:LEU:CD2	2.79	0.45
1:A:327:VAL:HG13	7:A:9158:HOH:O	2.15	0.45
2:A:8003:ACT:H1	7:A:9200:HOH:O	2.16	0.45
1:B:209:VAL:HG13	1:B:252:GLN:CB	2.46	0.44
1:A:176:VAL:CG2	1:B:127:GLN:HG3	2.47	0.44
1:A:250:TYR:O	1:A:254:GLN:HG3	2.18	0.44
1:B:209:VAL:CG1	1:B:249:GLU:HA	2.48	0.44
1:B:112:ARG:NH2	4:B:4001:SUF:O6	2.40	0.44

Continued on next page...

Continued from previous page...

Atom-1	Atom-2	Interatomic distance (Å)	Clash overlap (Å)
1:A:246:LEU:HD21	1:A:336:GLN:HB2	2.00	0.43
1:A:220:LEU:HB3	1:A:221:PRO:HD3	2.00	0.43
1:A:167:THR:HG22	1:B:25:PHE:CE1	2.52	0.43
1:A:345:ARG:HB3	7:A:9212:HOH:O	2.17	0.43
1:A:197:PHE:HA	7:A:9060:HOH:O	2.19	0.43
1:B:197:PHE:HA	7:B:9161:HOH:O	2.19	0.43
1:B:367:LYS:OXT	1:B:367:LYS:HD3	2.18	0.43
1:B:258:MET:HE3	1:B:366:GLN:O	2.19	0.43
1:B:47:LYS:NZ	1:B:367:LYS:HG3	2.34	0.43
1:B:273:ASP:HB2	7:B:9159:HOH:O	2.18	0.43
1:B:338:LYS:HD3	7:B:9177:HOH:O	2.19	0.42
1:A:193:THR:HG22	1:A:194:THR:N	2.35	0.42
1:B:315:ARG:NH1	1:B:319:GLU:CD	2.72	0.42
1:A:148:PHE:HB2	1:A:154:LEU:HD13	2.00	0.42
1:A:167:THR:HG22	1:B:25:PHE:HE1	1.84	0.42
1:B:253:VAL:O	1:B:257:VAL:HG23	2.20	0.42
1:B:367:LYS:HA	7:B:9233:HOH:O	2.20	0.42
1:A:183:ASN:HD22	1:B:30:ASN:HD21	1.68	0.41
1:A:159:CYS:SG	5:A:9001:BME:S2	2.58	0.41
1:B:210:LYS:O	1:B:214:ALA:HB3	2.21	0.41
1:A:74:ASP:CG	1:A:75:GLY:N	2.74	0.41
1:A:291:SER:N	1:A:294:GLN:OE1	2.42	0.41
1:A:10:TYR:HB2	1:A:90:TRP:CE2	2.56	0.41
1:A:79:LYS:HB3	1:A:79:LYS:NZ	2.36	0.41
1:B:232:LEU:N	1:B:233:PRO:HD2	2.36	0.40
1:B:47:LYS:HZ2	1:B:367:LYS:CG	2.35	0.40
1:B:205:TYR:CZ	1:B:209:VAL:HG21	2.56	0.40
1:B:104:ASP:OD2	1:B:112:ARG:HD2	2.22	0.40

All (1) symmetry-related close contacts are listed below. The label for Atom-2 includes the symmetry operator and encoded unit-cell translations to be applied.

Atom-1	Atom-2	Interatomic distance (Å)	Clash overlap (Å)
7:A:9237:HOH:O	7:A:9237:HOH:O[2_656]	2.01	0.19

5.3 Torsion angles

5.3.1 Protein backbone

In the following table, the Percentiles column shows the percent Ramachandran outliers of the chain as a percentile score with respect to all X-ray entries followed by that with respect to entries of similar resolution.

The Analysed column shows the number of residues for which the backbone conformation was analysed, and the total number of residues.

Mol	Chain	Analysed	Favoured	Allowed	Outliers	Percentiles	
1	A	354/390 (91%)	348 (98%)	5 (1%)	1 (0%)	46	41
1	B	355/390 (91%)	351 (99%)	4 (1%)	0	100	100
All	All	709/780 (91%)	699 (99%)	9 (1%)	1 (0%)	56	53

All (1) Ramachandran outliers are listed below:

Mol	Chain	Res	Type
1	A	62	LEU

5.3.2 Protein sidechains

In the following table, the Percentiles column shows the percent sidechain outliers of the chain as a percentile score with respect to all X-ray entries followed by that with respect to entries of similar resolution.

The Analysed column shows the number of residues for which the sidechain conformation was analysed, and the total number of residues.

Mol	Chain	Analysed	Rotameric	Outliers	Percentiles	
1	A	311/340 (92%)	301 (97%)	10 (3%)	46	44
1	B	312/340 (92%)	301 (96%)	11 (4%)	43	40
All	All	623/680 (92%)	602 (97%)	21 (3%)	44	41

All (21) residues with a non-rotameric sidechain are listed below:

Mol	Chain	Res	Type
1	A	1	MET
1	A	64	LEU
1	A	79	LYS
1	A	150	ASP
1	A	151	ARG

Continued on next page...

Continued from previous page...

Mol	Chain	Res	Type
1	A	157	LEU
1	A	185	LEU
1	A	219	LEU
1	A	335	GLU
1	A	338	LYS
1	B	23	LEU
1	B	35	LEU
1	B	61	LEU
1	B	62	LEU
1	B	77	ARG
1	B	100	LEU
1	B	112	ARG
1	B	176	VAL
1	B	185	LEU
1	B	340	LEU
1	B	358	LEU

Some sidechains can be flipped to improve hydrogen bonding and reduce clashes. All (12) such sidechains are listed below:

Mol	Chain	Res	Type
1	A	8	GLN
1	A	96	GLN
1	A	121	HIS
1	A	141	HIS
1	A	162	ASN
1	A	183	ASN
1	A	336	GLN
1	B	4	GLN
1	B	8	GLN
1	B	141	HIS
1	B	155	GLN
1	B	191	GLN

5.3.3 RNA ⓘ

There are no RNA molecules in this entry.

5.4 Non-standard residues in protein, DNA, RNA chains ⓘ

There are no non-standard protein/DNA/RNA residues in this entry.

5.5 Carbohydrates [i](#)

There are no carbohydrates in this entry.

5.6 Ligand geometry [i](#)

Of 16 ligands modelled in this entry, 6 are monoatomic - leaving 10 for Mogul analysis.

In the following table, the Counts columns list the number of bonds (or angles) for which Mogul statistics could be retrieved, the number of bonds (or angles) that are observed in the model and the number of bonds (or angles) that are defined in the chemical component dictionary. The Link column lists molecule types, if any, to which the group is linked. The Z score for a bond length (or angle) is the number of standard deviations the observed value is removed from the expected value. A bond length (or angle) with $|Z| > 2$ is considered an outlier worth inspection. RMSZ is the root-mean-square of all Z scores of the bond lengths (or angles).

Mol	Type	Chain	Res	Link	Bond lengths			Bond angles		
					Counts	RMSZ	$\# Z > 2$	Counts	RMSZ	$\# Z > 2$
4	SUF	A	3001	3	12,13,13	1.28	1 (8%)	18,22,22	1.65	5 (27%)
6	MPD	A	7001	-	6,7,7	0.44	0	7,10,10	0.60	0
2	ACT	A	8003	-	1,3,3	0.14	0	0,3,3	0.00	-
2	ACT	A	8004	-	1,3,3	2.02	1 (100%)	0,3,3	0.00	-
5	BME	A	9001	-	3,3,3	0.35	0	2,2,2	0.58	0
4	SUF	B	4001	3	12,13,13	1.34	1 (8%)	18,22,22	1.64	5 (27%)
2	ACT	B	8001	-	1,3,3	0.87	0	0,3,3	0.00	-
2	ACT	B	8002	-	1,3,3	0.79	0	0,3,3	0.00	-
5	BME	B	9002	-	3,3,3	0.35	0	2,2,2	0.58	0
5	BME	B	9003	-	3,3,3	0.57	0	2,2,2	0.39	0

In the following table, the Chirals column lists the number of chiral outliers, the number of chiral centers analysed, the number of these observed in the model and the number defined in the chemical component dictionary. Similar counts are reported in the Torsion and Rings columns. '-' means no outliers of that kind were identified.

Mol	Type	Chain	Res	Link	Chirals	Torsions	Rings
4	SUF	A	3001	3	-	0/20/23/23	0/0/0/0
6	MPD	A	7001	-	-	0/5/5/5	0/0/0/0
2	ACT	A	8003	-	-	0/0/0/0	0/0/0/0
2	ACT	A	8004	-	-	0/0/0/0	0/0/0/0
5	BME	A	9001	-	-	0/1/1/1	0/0/0/0
4	SUF	B	4001	3	-	0/20/23/23	0/0/0/0
2	ACT	B	8001	-	-	0/0/0/0	0/0/0/0
2	ACT	B	8002	-	-	0/0/0/0	0/0/0/0
5	BME	B	9002	-	-	0/1/1/1	0/0/0/0

Continued on next page...

Continued from previous page...

Mol	Type	Chain	Res	Link	Chirals	Torsions	Rings
5	BME	B	9003	-	-	0/1/1/1	0/0/0/0

All (3) bond length outliers are listed below:

Mol	Chain	Res	Type	Atoms	Z	Observed(Å)	Ideal(Å)
4	B	4001	SUF	P2-O1	-2.76	1.49	1.54
4	A	3001	SUF	P2-O1	-2.31	1.50	1.54
2	A	8004	ACT	CH3-C	2.02	1.51	1.48

All (10) bond angle outliers are listed below:

Mol	Chain	Res	Type	Atoms	Z	Observed(°)	Ideal(°)
4	A	3001	SUF	O3-P2-O7	-3.06	105.80	113.04
4	B	4001	SUF	O7-P2-C1	-2.65	102.83	109.95
4	B	4001	SUF	O3-P2-O7	-2.64	106.78	113.04
4	A	3001	SUF	O7-P2-C1	-2.58	103.00	109.95
4	B	4001	SUF	O4-P1-C1	2.09	110.57	105.90
4	A	3001	SUF	O4-P1-C1	2.10	110.59	105.90
4	B	4001	SUF	O1-P2-C1	2.37	111.19	105.90
4	A	3001	SUF	O1-P2-C1	2.38	111.20	105.90
4	B	4001	SUF	C3-S-C4	3.37	105.68	101.63
4	A	3001	SUF	C3-S-C4	3.37	105.68	101.63

There are no chirality outliers.

There are no torsion outliers.

There are no ring outliers.

7 monomers are involved in 13 short contacts:

Mol	Chain	Res	Type	Clashes	Symm-Clashes
2	A	8003	ACT	3	0
5	A	9001	BME	1	0
4	B	4001	SUF	1	0
2	B	8001	ACT	4	0
2	B	8002	ACT	1	0
5	B	9002	BME	1	0
5	B	9003	BME	2	0

5.7 Other polymers ⓘ

There are no such residues in this entry.

5.8 Polymer linkage issues

There are no chain breaks in this entry.

6 Fit of model and data [i](#)

6.1 Protein, DNA and RNA chains [i](#)

In the following table, the column labelled ‘#RSRZ> 2’ contains the number (and percentage) of RSRZ outliers, followed by percent RSRZ outliers for the chain as percentile scores relative to all X-ray entries and entries of similar resolution. The OWAB column contains the minimum, median, 95th percentile and maximum values of the occupancy-weighted average B-factor per residue. The column labelled ‘Q< 0.9’ lists the number of (and percentage) of residues with an average occupancy less than 0.9.

Mol	Chain	Analysed	<RSRZ>	#RSRZ>2	OWAB(Å ²)	Q<0.9
1	A	358/390 (91%)	-0.10	6 (1%) 73 73	14, 27, 44, 60	0
1	B	359/390 (92%)	-0.18	5 (1%) 78 78	14, 26, 43, 63	0
All	All	717/780 (91%)	-0.14	11 (1%) 76 77	14, 26, 44, 63	0

All (11) RSRZ outliers are listed below:

Mol	Chain	Res	Type	RSRZ
1	A	64	LEU	6.6
1	B	74	ASP	4.6
1	B	73	ASP	3.9
1	A	62	LEU	3.3
1	A	74	ASP	3.0
1	A	63	SER	2.8
1	A	367	LYS	2.6
1	B	64	LEU	2.6
1	A	75	GLY	2.5
1	B	75	GLY	2.3
1	B	263	PRO	2.0

6.2 Non-standard residues in protein, DNA, RNA chains [i](#)

There are no non-standard protein/DNA/RNA residues in this entry.

6.3 Carbohydrates [i](#)

There are no carbohydrates in this entry.

6.4 Ligands

In the following table, the Atoms column lists the number of modelled atoms in the group and the number defined in the chemical component dictionary. LLDF column lists the quality of electron density of the group with respect to its neighbouring residues in protein, DNA or RNA chains. The B-factors column lists the minimum, median, 95th percentile and maximum values of B factors of atoms in the group. The column labelled 'Q< 0.9' lists the number of atoms with occupancy less than 0.9.

Mol	Type	Chain	Res	Atoms	RSCC	RSR	LLDF	B-factors(Å ²)	Q<0.9
2	ACT	A	8004	4/4	0.84	0.26	4.01	27,35,40,42	0
2	ACT	A	8003	4/4	0.90	0.21	3.05	25,27,32,38	0
3	MG	B	4003	1/1	0.94	0.14	2.34	23,23,23,23	0
6	MPD	A	7001	8/8	0.86	0.18	2.28	35,38,41,41	0
2	ACT	B	8001	4/4	0.76	0.26	1.98	26,37,38,46	0
3	MG	A	3003	1/1	0.98	0.10	1.89	21,21,21,21	0
2	ACT	B	8002	4/4	0.83	0.21	1.35	25,33,37,38	0
4	SUF	B	4001	14/14	0.98	0.14	1.27	13,23,29,32	0
4	SUF	A	3001	14/14	0.98	0.12	0.70	15,23,26,30	0
3	MG	B	4004	1/1	0.97	0.14	0.00	20,20,20,20	0
3	MG	A	3004	1/1	0.97	0.11	-0.37	19,19,19,19	0
5	BME	B	9003	4/4	0.84	0.28	-	59,61,62,63	0
5	BME	B	9002	4/4	0.92	0.17	-	29,30,37,47	0
5	BME	A	9001	4/4	0.89	0.24	-	31,39,42,54	0
3	MG	B	4002	1/1	0.99	0.14	-	21,21,21,21	0
3	MG	A	3002	1/1	0.98	0.10	-	21,21,21,21	0

6.5 Other polymers

There are no such residues in this entry.