



wwPDB X-ray Structure Validation Summary Report ⓘ

Feb 1, 2016 – 07:18 PM GMT

PDB ID : 4OH3
Title : Crystal structure of a nitrate transporter
Authors : Sun, J.; Bankston, J.R.; Payandeh, J.; Hinds, T.R.; Zagotta, W.N.; Zheng, N.
Deposited on : 2014-01-16
Resolution : 3.25 Å(reported)

This is a wwPDB X-ray Structure Validation Summary Report for a publicly released PDB entry.
We welcome your comments at validation@mail.wwpdb.org
A user guide is available at
<http://wwpdb.org/validation/2016/XrayValidationReportHelp>
with specific help available everywhere you see the ⓘ symbol.

The following versions of software and data (see [references ⓘ](#)) were used in the production of this report:

MolProbity : 4.02b-467
Mogul : 1.7 (RC4), CSD as536be (2015)
Xtriage (Phenix) : 1.9-1692
EDS : rb-20026688
Percentile statistics : 20151230.v01 (using entries in the PDB archive December 30th 2015)
Refmac : 5.8.0135
CCP4 : 6.5.0
Ideal geometry (proteins) : Engh & Huber (2001)
Ideal geometry (DNA, RNA) : Parkinson et al. (1996)
Validation Pipeline (wwPDB-VP) : trunk26865

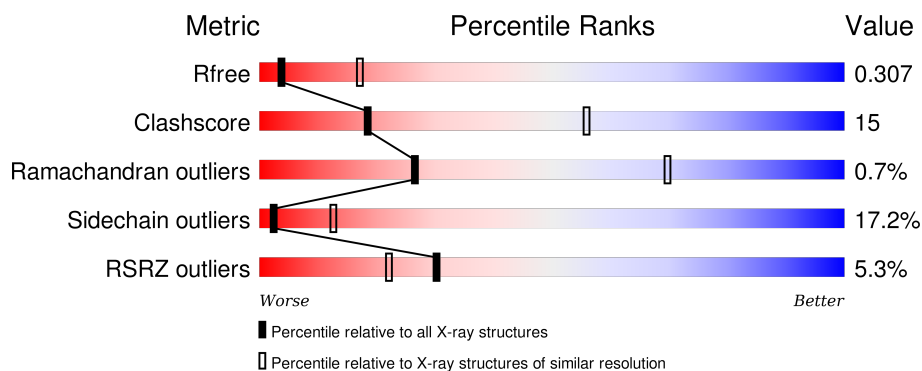
1 Overall quality at a glance

The following experimental techniques were used to determine the structure:

X-RAY DIFFRACTION

The reported resolution of this entry is 3.25 Å.

Percentile scores (ranging between 0-100) for global validation metrics of the entry are shown in the following graphic. The table shows the number of entries on which the scores are based.



Metric	Whole archive (#Entries)	Similar resolution (#Entries, resolution range(Å))
R_{free}	91344	1624 (3.32-3.20)
Clashscore	102246	1806 (3.32-3.20)
Ramachandran outliers	100387	1773 (3.32-3.20)
Sidechain outliers	100360	1771 (3.32-3.20)
RSRZ outliers	91569	1632 (3.32-3.20)

The table below summarises the geometric issues observed across the polymeric chains and their fit to the electron density. The red, orange, yellow and green segments on the lower bar indicate the fraction of residues that contain outliers for ≥ 3 , 2, 1 and 0 types of geometric quality criteria. A grey segment represents the fraction of residues that are not modelled. The numeric value for each fraction is indicated below the corresponding segment, with a dot representing fractions $\leq 5\%$. The upper red bar (where present) indicates the fraction of residues that have poor fit to the electron density. The numeric value is given above the bar.

Mol	Chain	Length	Quality of chain
1	A	599	
1	B	599	

The following table lists non-polymeric compounds, carbohydrate monomers and non-standard residues in protein, DNA, RNA chains that are outliers for geometric or electron-density-fit criteria:

Mol	Type	Chain	Res	Chirality	Geometry	Clashes	Electron density
3	NO3	A	702	-	-	-	X
3	NO3	B	602	-	-	-	X

2 Entry composition

There are 3 unique types of molecules in this entry. The entry contains 8048 atoms, of which 0 are hydrogens and 0 are deuteriums.

In the tables below, the ZeroOcc column contains the number of atoms modelled with zero occupancy, the AltConf column contains the number of residues with at least one atom in alternate conformation and the Trace column contains the number of residues modelled with at most 2 atoms.

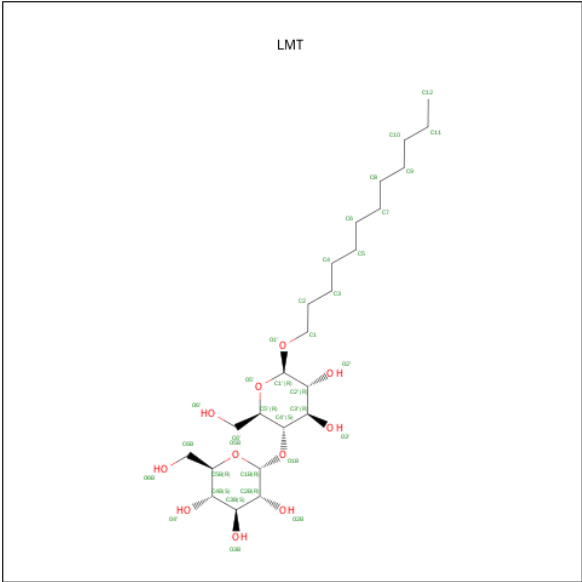
- Molecule 1 is a protein called Nitrate transporter 1.1.

Mol	Chain	Residues	Atoms					ZeroOcc	AltConf	Trace
1	A	512	Total	C	N	O	S	0	0	0
			3930	2576	647	687	20			
1	B	537	Total	C	N	O	S	0	0	0
			4062	2657	672	713	20			

There are 18 discrepancies between the modelled and reference sequences:

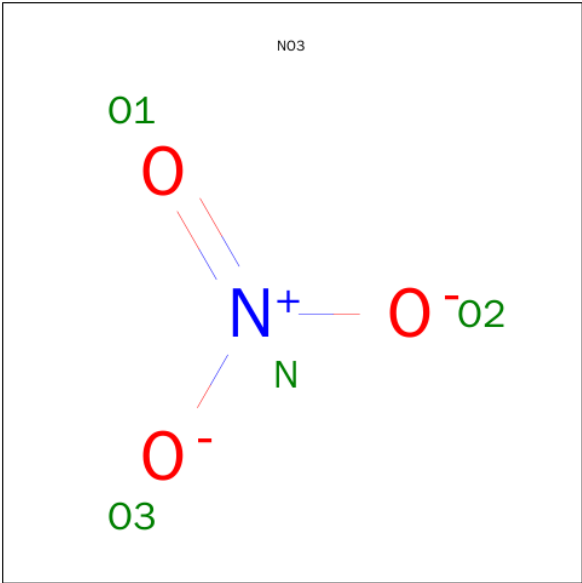
Chain	Residue	Modelled	Actual	Comment	Reference
A	591	ALA	-	EXPRESSION TAG	UNP Q05085
A	592	ALA	-	EXPRESSION TAG	UNP Q05085
A	593	ALA	-	EXPRESSION TAG	UNP Q05085
A	594	GLY	-	EXPRESSION TAG	UNP Q05085
A	595	SER	-	EXPRESSION TAG	UNP Q05085
A	596	LEU	-	EXPRESSION TAG	UNP Q05085
A	597	VAL	-	EXPRESSION TAG	UNP Q05085
A	598	PRO	-	EXPRESSION TAG	UNP Q05085
A	599	ARG	-	EXPRESSION TAG	UNP Q05085
B	591	ALA	-	EXPRESSION TAG	UNP Q05085
B	592	ALA	-	EXPRESSION TAG	UNP Q05085
B	593	ALA	-	EXPRESSION TAG	UNP Q05085
B	594	GLY	-	EXPRESSION TAG	UNP Q05085
B	595	SER	-	EXPRESSION TAG	UNP Q05085
B	596	LEU	-	EXPRESSION TAG	UNP Q05085
B	597	VAL	-	EXPRESSION TAG	UNP Q05085
B	598	PRO	-	EXPRESSION TAG	UNP Q05085
B	599	ARG	-	EXPRESSION TAG	UNP Q05085

- Molecule 2 is DODECYL-BETA-D-MALTOSIDE (three-letter code: LMT) (formula: $C_{24}H_{46}O_{11}$).

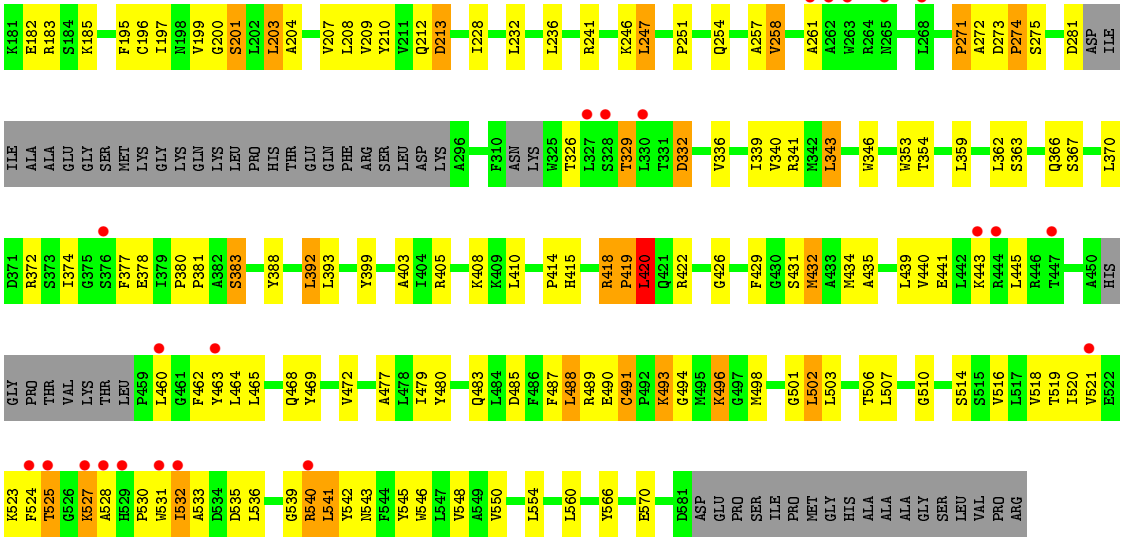


Mol	Chain	Residues	Atoms			ZeroOcc	AltConf
2	A	1	Total	C	O	0	0
			24	13	11		
2	B	1	Total	C	O	0	0
			24	13	11		

- Molecule 3 is NITRATE ION (three-letter code: NO3) (formula: NO₃).



Mol	Chain	Residues	Atoms			ZeroOcc	AltConf
3	A	1	Total	N	O	0	0
			4	1	3		
3	B	1	Total	N	O	0	0
			4	1	3		



4 Data and refinement statistics

Property	Value	Source
Space group	C 2 2 21	Depositor
Cell constants a, b, c, α , β , γ	84.80 Å 188.47 Å 262.85 Å 90.00° 90.00° 90.00°	Depositor
Resolution (Å)	45.91 – 3.25 45.91 – 3.20	Depositor EDS
% Data completeness (in resolution range)	89.5 (45.91-3.25) 86.6 (45.91-3.20)	Depositor EDS
R_{merge}	0.07	Depositor
R_{sym}	(Not available)	Depositor
$\langle I/\sigma(I) \rangle$ ¹	2.78 (at 3.19 Å)	Xtriage
Refinement program	PHENIX (phenix.refine: 1.8.4_1496)	Depositor
R, R_{free}	0.235 , 0.307 0.234 , 0.307	Depositor DCC
R_{free} test set	1462 reflections (4.86%)	DCC
Wilson B-factor (Å ²)	86.3	Xtriage
Anisotropy	0.011	Xtriage
Bulk solvent k_{sol} (e/Å ³), B_{sol} (Å ²)	0.28 , 67.7	EDS
Estimated twinning fraction	No twinning to report.	Xtriage
L-test for twinning ²	$\langle L \rangle = 0.50$, $\langle L^2 \rangle = 0.34$	Xtriage
Outliers	2 of 30437 reflections (0.007%)	Xtriage
F_o, F_c correlation	0.89	EDS
Total number of atoms	8048	wwPDB-VP
Average B, all atoms (Å ²)	93.0	wwPDB-VP

Xtriage's analysis on translational NCS is as follows: *The largest off-origin peak in the Patterson function is 4.00% of the height of the origin peak. No significant pseudotranslation is detected.*

¹Intensities estimated from amplitudes.

²Theoretical values of $\langle |L| \rangle$, $\langle L^2 \rangle$ for acentric reflections are 0.5, 0.375 respectively for untwinned datasets, and 0.333, 0.2 for perfectly twinned datasets.

5 Model quality

5.1 Standard geometry

Bond lengths and bond angles in the following residue types are not validated in this section: LMT, NO3

The Z score for a bond length (or angle) is the number of standard deviations the observed value is removed from the expected value. A bond length (or angle) with $|Z| > 5$ is considered an outlier worth inspection. RMSZ is the root-mean-square of all Z scores of the bond lengths (or angles).

Mol	Chain	Bond lengths		Bond angles	
		RMSZ	$\# Z > 5$	RMSZ	$\# Z > 5$
1	A	0.54	0/4017	0.72	4/5459 (0.1%)
1	B	0.44	0/4149	0.68	6/5643 (0.1%)
All	All	0.49	0/8166	0.70	10/11102 (0.1%)

Chiral center outliers are detected by calculating the chiral volume of a chiral center and verifying if the center is modelled as a planar moiety or with the opposite hand. A planarity outlier is detected by checking planarity of atoms in a peptide group, atoms in a mainchain group or atoms of a sidechain that are expected to be planar.

Mol	Chain	#Chirality outliers	#Planarity outliers
1	A	0	1
1	B	0	3
All	All	0	4

There are no bond length outliers.

The worst 5 of 10 bond angle outliers are listed below:

Mol	Chain	Res	Type	Atoms	Z	Observed(°)	Ideal(°)
1	B	271	PRO	N-CA-CB	6.43	111.02	103.30
1	B	274	PRO	N-CA-CB	5.84	110.31	103.30
1	A	29	GLY	N-CA-C	-5.60	99.10	113.10
1	A	178	THR	N-CA-C	-5.52	96.09	111.00
1	B	420	LEU	CA-CB-CG	5.47	127.89	115.30

There are no chirality outliers.

All (4) planarity outliers are listed below:

Mol	Chain	Res	Type	Group
1	A	262	ALA	Peptide

Continued on next page...

Continued from previous page...

Mol	Chain	Res	Type	Group
1	B	175	PHE	Peptide
1	B	272	ALA	Peptide
1	B	418	ARG	Peptide

5.2 Too-close contacts [i](#)

In the following table, the Non-H and H(model) columns list the number of non-hydrogen atoms and hydrogen atoms in the chain respectively. The H(added) column lists the number of hydrogen atoms added and optimized by MolProbity. The Clashes column lists the number of clashes within the asymmetric unit, whereas Symm-Clashes lists symmetry related clashes.

Mol	Chain	Non-H	H(model)	H(added)	Clashes	Symm-Clashes
1	A	3930	0	4004	129	0
1	B	4062	0	4079	122	0
2	A	24	0	20	1	0
2	B	24	0	20	4	0
3	A	4	0	0	0	0
3	B	4	0	0	0	0
All	All	8048	0	8123	250	0

The all-atom clashscore is defined as the number of clashes found per 1000 atoms (including hydrogen atoms). The all-atom clashscore for this structure is 15.

The worst 5 of 250 close contacts within the same asymmetric unit are listed below, sorted by their clash magnitude.

Atom-1	Atom-2	Interatomic distance (Å)	Clash overlap (Å)
1:A:179:GLU:HG2	1:A:181:LYS:H	1.37	0.90
1:B:392:LEU:HD12	1:B:477:ALA:HB2	1.60	0.84
1:A:98:ARG:HG2	1:A:170:PHE:HB2	1.59	0.82
1:A:24:ASP:OD1	1:A:27:LYS:N	2.12	0.81
1:B:45:ARG:HH21	1:B:197:ILE:HG21	1.46	0.80

There are no symmetry-related clashes.

5.3 Torsion angles [i](#)

5.3.1 Protein backbone [i](#)

In the following table, the Percentiles column shows the percent Ramachandran outliers of the chain as a percentile score with respect to all X-ray entries followed by that with respect to entries

of similar resolution.

The Analysed column shows the number of residues for which the backbone conformation was analysed, and the total number of residues.

Mol	Chain	Analysed	Favoured	Allowed	Outliers	Percentiles	
1	A	504/599 (84%)	470 (93%)	32 (6%)	2 (0%)	39	78
1	B	529/599 (88%)	474 (90%)	50 (10%)	5 (1%)	21	64
All	All	1033/1198 (86%)	944 (91%)	82 (8%)	7 (1%)	26	70

5 of 7 Ramachandran outliers are listed below:

Mol	Chain	Res	Type
1	B	273	ASP
1	B	532	ILE
1	B	274	PRO
1	A	493	LYS
1	A	492	PRO

5.3.2 Protein sidechains ⓘ

In the following table, the Percentiles column shows the percent sidechain outliers of the chain as a percentile score with respect to all X-ray entries followed by that with respect to entries of similar resolution.

The Analysed column shows the number of residues for which the sidechain conformation was analysed, and the total number of residues.

Mol	Chain	Analysed	Rotameric	Outliers	Percentiles	
1	A	409/494 (83%)	337 (82%)	72 (18%)	2	11
1	B	412/494 (83%)	343 (83%)	69 (17%)	3	13
All	All	821/988 (83%)	680 (83%)	141 (17%)	2	12

5 of 141 residues with a non-rotameric sidechain are listed below:

Mol	Chain	Res	Type
1	A	509	LEU
1	B	62	THR
1	B	519	THR
1	A	517	LEU
1	A	573	LEU

Some sidechains can be flipped to improve hydrogen bonding and reduce clashes. All (4) such

sidechains are listed below:

Mol	Chain	Res	Type
1	B	145	GLN
1	B	254	GLN
1	B	366	GLN
1	B	468	GLN

5.3.3 RNA ⓘ

There are no RNA molecules in this entry.

5.4 Non-standard residues in protein, DNA, RNA chains ⓘ

There are no non-standard protein/DNA/RNA residues in this entry.

5.5 Carbohydrates ⓘ

There are no carbohydrates in this entry.

5.6 Ligand geometry ⓘ

4 ligands are modelled in this entry.

In the following table, the Counts columns list the number of bonds (or angles) for which Mogul statistics could be retrieved, the number of bonds (or angles) that are observed in the model and the number of bonds (or angles) that are defined in the chemical component dictionary. The Link column lists molecule types, if any, to which the group is linked. The Z score for a bond length (or angle) is the number of standard deviations the observed value is removed from the expected value. A bond length (or angle) with $|Z| > 2$ is considered an outlier worth inspection. RMSZ is the root-mean-square of all Z scores of the bond lengths (or angles).

Mol	Type	Chain	Res	Link	Bond lengths			Bond angles		
					Counts	RMSZ	# Z > 2	Counts	RMSZ	# Z > 2
2	LMT	A	701	-	25,25,36	1.58	4 (16%)	36,36,47	2.17	11 (30%)
3	NO3	A	702	-	3,3,3	1.92	2 (66%)	3,3,3	0.16	0
2	LMT	B	601	-	25,25,36	1.56	3 (12%)	36,36,47	1.59	8 (22%)
3	NO3	B	602	-	3,3,3	2.01	2 (66%)	3,3,3	0.17	0

In the following table, the Chirals column lists the number of chiral outliers, the number of chiral centers analysed, the number of these observed in the model and the number defined in the chemical component dictionary. Similar counts are reported in the Torsion and Rings columns. '-' means

no outliers of that kind were identified.

Mol	Type	Chain	Res	Link	Chirals	Torsions	Rings
2	LMT	A	701	-	-	0/10/50/61	0/2/2/2
3	NO3	A	702	-	-	0/0/0/0	0/0/0/0
2	LMT	B	601	-	-	0/10/50/61	0/2/2/2
3	NO3	B	602	-	-	0/0/0/0	0/0/0/0

The worst 5 of 11 bond length outliers are listed below:

Mol	Chain	Res	Type	Atoms	Z	Observed(Å)	Ideal(Å)
2	A	701	LMT	C3'-C4'	-3.82	1.41	1.52
2	B	601	LMT	C3'-C4'	-3.36	1.42	1.52
2	A	701	LMT	O5'-C5'	2.00	1.49	1.44
3	A	702	NO3	O2-N	2.29	1.37	1.25
2	B	601	LMT	O3'-C3'	2.31	1.48	1.43

The worst 5 of 19 bond angle outliers are listed below:

Mol	Chain	Res	Type	Atoms	Z	Observed(°)	Ideal(°)
2	A	701	LMT	O2'-C2'-C1'	-2.46	104.62	110.02
2	B	601	LMT	O6'-C6'-C5'	2.02	118.00	111.33
2	B	601	LMT	O5B-C1B-C2B	2.09	114.57	110.28
2	A	701	LMT	O5B-C1B-C2B	2.14	114.67	110.28
2	A	701	LMT	O1'-C1'-C2'	2.29	110.91	108.21

There are no chirality outliers.

There are no torsion outliers.

There are no ring outliers.

2 monomers are involved in 5 short contacts:

Mol	Chain	Res	Type	Clashes	Symm-Clashes
2	A	701	LMT	1	0
2	B	601	LMT	4	0

5.7 Other polymers [i](#)

There are no such residues in this entry.

5.8 Polymer linkage issues [i](#)

There are no chain breaks in this entry.

6 Fit of model and data [i](#)

6.1 Protein, DNA and RNA chains [i](#)

In the following table, the column labelled ‘#RSRZ> 2’ contains the number (and percentage) of RSRZ outliers, followed by percent RSRZ outliers for the chain as percentile scores relative to all X-ray entries and entries of similar resolution. The OWAB column contains the minimum, median, 95th percentile and maximum values of the occupancy-weighted average B-factor per residue. The column labelled ‘Q< 0.9’ lists the number of (and percentage) of residues with an average occupancy less than 0.9.

Mol	Chain	Analysed	<RSRZ>	#RSRZ>2		OWAB(Å ²)	Q<0.9
1	A	512/599 (85%)	-0.07	25 (4%)	33 25	36, 71, 159, 228	0
1	B	537/599 (89%)	0.11	31 (5%)	26 19	47, 93, 170, 237	0
All	All	1049/1198 (87%)	0.02	56 (5%)	30 22	36, 84, 167, 237	0

The worst 5 of 56 RSRZ outliers are listed below:

Mol	Chain	Res	Type	RSRZ
1	B	529	HIS	6.2
1	A	572	ARG	5.3
1	A	527	LYS	5.3
1	B	524	PHE	5.0
1	A	263	TRP	4.7

6.2 Non-standard residues in protein, DNA, RNA chains [i](#)

There are no non-standard protein/DNA/RNA residues in this entry.

6.3 Carbohydrates [i](#)

There are no carbohydrates in this entry.

6.4 Ligands [i](#)

In the following table, the Atoms column lists the number of modelled atoms in the group and the number defined in the chemical component dictionary. LLDF column lists the quality of electron density of the group with respect to its neighbouring residues in protein, DNA or RNA chains. The B-factors column lists the minimum, median, 95th percentile and maximum values of B factors of atoms in the group. The column labelled ‘Q< 0.9’ lists the number of atoms with occupancy less than 0.9.

Mol	Type	Chain	Res	Atoms	RSCC	RSR	LLDF	B-factors(\AA^2)	Q<0.9
3	NO3	B	602	4/4	0.93	0.36	4.48	109,109,109,109	0
3	NO3	A	702	4/4	0.90	0.26	2.37	78,78,78,78	0
2	LMT	A	701	24/35	0.90	0.14	-0.51	80,83,85,86	0
2	LMT	B	601	24/35	0.92	0.11	-1.27	96,96,97,97	0

6.5 Other polymers [i](#)

There are no such residues in this entry.