



Full wwPDB X-ray Structure Validation Report ⓘ

Feb 1, 2016 – 07:20 PM GMT

PDB ID : 4OIK
Title : (Quasi-)Racemic X-ray crystal structure of glycosylated chemokine Ser-CCL1.
Authors : Okamoto, R.; Mandal, K.; Sawaya, M.R.; Kajihara, Y.; Yeates, T.O.; Kent, S.B.H.
Deposited on : 2014-01-19
Resolution : 2.10 Å(reported)

This is a Full wwPDB X-ray Structure Validation Report for a publicly released PDB entry.
We welcome your comments at validation@mail.wwpdb.org
A user guide is available at
<http://wwpdb.org/validation/2016/XrayValidationReportHelp>
with specific help available everywhere you see the ⓘ symbol.

The following versions of software and data (see [references ⓘ](#)) were used in the production of this report:

MolProbity : 4.02b-467
Mogul : 1.7 (RC4), CSD as536be (2015)
Xtriage (Phenix) : 1.9-1692
EDS : rb-20026688
Percentile statistics : 20151230.v01 (using entries in the PDB archive December 30th 2015)
Refmac : 5.8.0135
CCP4 : 6.5.0
Ideal geometry (proteins) : Engh & Huber (2001)
Ideal geometry (DNA, RNA) : Parkinson et al. (1996)
Validation Pipeline (wwPDB-VP) : trunk26865

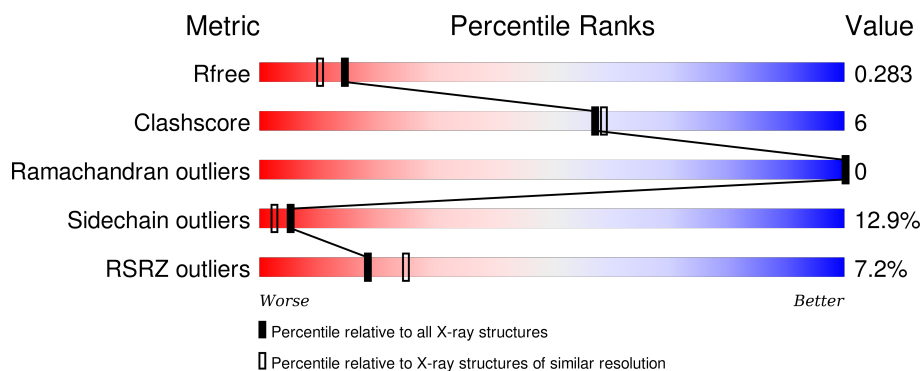
1 Overall quality at a glance

The following experimental techniques were used to determine the structure:

X-RAY DIFFRACTION

The reported resolution of this entry is 2.10 Å.

Percentile scores (ranging between 0-100) for global validation metrics of the entry are shown in the following graphic. The table shows the number of entries on which the scores are based.



Metric	Whole archive (#Entries)	Similar resolution (#Entries, resolution range(Å))
R_{free}	91344	3939 (2.10-2.10)
Clashscore	102246	4460 (2.10-2.10)
Ramachandran outliers	100387	4413 (2.10-2.10)
Sidechain outliers	100360	4414 (2.10-2.10)
RSRZ outliers	91569	3948 (2.10-2.10)

The table below summarises the geometric issues observed across the polymeric chains and their fit to the electron density. The red, orange, yellow and green segments on the lower bar indicate the fraction of residues that contain outliers for ≥ 3 , 2, 1 and 0 types of geometric quality criteria. A grey segment represents the fraction of residues that are not modelled. The numeric value for each fraction is indicated below the corresponding segment, with a dot representing fractions $\leq 5\%$. The upper red bar (where present) indicates the fraction of residues that have poor fit to the electron density. The numeric value is given above the bar.

Mol	Chain	Length	Quality of chain
1	A	74	<div> <div>7%</div> <div>86%</div> <div>9%</div> <div>..</div> </div>
1	B	74	<div> <div>5%</div> <div>85%</div> <div>11%</div> <div>..</div> </div>
2	C	74	<div> <div>%</div> <div>68%</div> <div>28%</div> <div>.</div> </div>
2	D	74	<div> <div>%</div> <div>74%</div> <div>22%</div> <div>.</div> </div>

2 Entry composition [i](#)

There are 6 unique types of molecules in this entry. The entry contains 2619 atoms, of which 0 are hydrogens and 0 are deuteriums.

In the tables below, the ZeroOcc column contains the number of atoms modelled with zero occupancy, the AltConf column contains the number of residues with at least one atom in alternate conformation and the Trace column contains the number of residues modelled with at most 2 atoms.

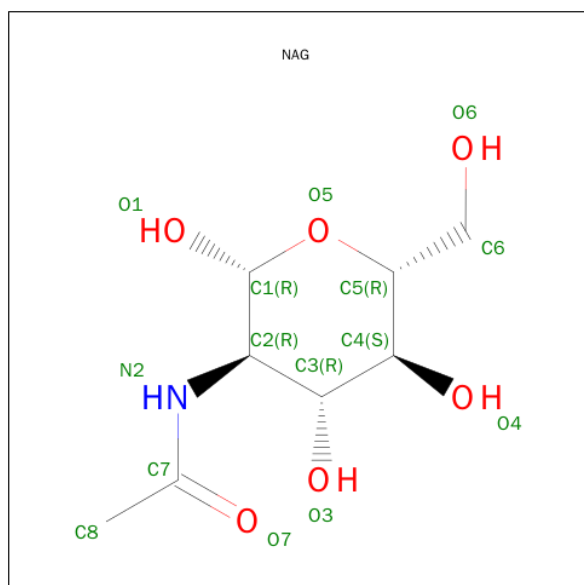
- Molecule 1 is a protein called C-C motif chemokine 1.

Mol	Chain	Residues	Atoms					ZeroOcc	AltConf	Trace
1	A	73	Total	C	N	O	S	0	0	0
			587	367	113	99	8			
1	B	73	Total	C	N	O	S	0	0	0
			587	367	113	99	8			

- Molecule 2 is a protein (with D amino acids) called D-Ser-CCL1.

Mol	Chain	Residues	Atoms					ZeroOcc	AltConf	Trace
2	C	71	Total	C	N	O	S	0	0	0
			572	358	110	96	8			
2	D	71	Total	C	N	O	S	0	0	0
			572	358	110	96	8			

- Molecule 3 is SUGAR (N-ACETYL-D-GLUCOSAMINE) (three-letter code: NAG) (formula: $C_8H_{15}NO_6$).



Mol	Chain	Residues	Atoms				ZeroOcc	AltConf
3	A	1	Total	C	N	O	0	0
			14	8	1	5		
3	B	1	Total	C	N	O	0	0
			14	8	1	5		

- Molecule 4 is SULFATE ION (three-letter code: SO4) (formula: O₄S).



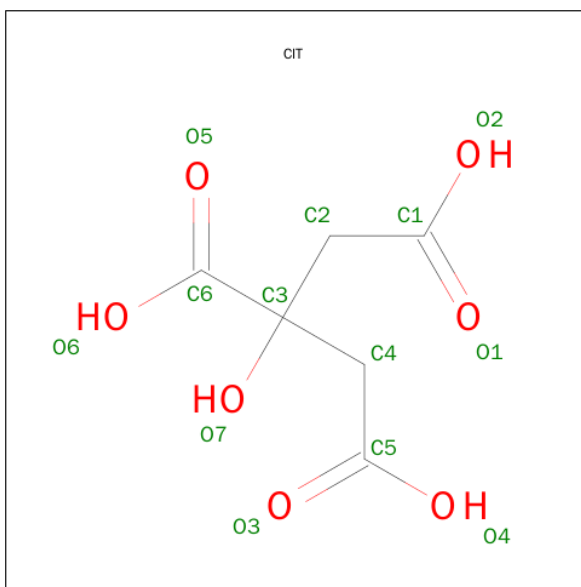
Mol	Chain	Residues	Atoms			ZeroOcc	AltConf
4	A	1	Total	O	S	0	0
			5	4	1		
4	A	1	Total	O	S	0	0
			5	4	1		
4	A	1	Total	O	S	0	0
			5	4	1		
4	A	1	Total	O	S	0	0
			5	4	1		
4	A	1	Total	O	S	0	0
			5	4	1		
4	A	1	Total	O	S	0	0
			5	4	1		
4	B	1	Total	O	S	0	0
			5	4	1		
4	B	1	Total	O	S	0	0
			5	4	1		

Continued on next page...

Continued from previous page...

Mol	Chain	Residues	Atoms			ZeroOcc	AltConf
4	B	1	Total	O	S	0	0
			5	4	1		
4	B	1	Total	O	S	0	0
			5	4	1		
4	B	1	Total	O	S	0	0
			5	4	1		
4	B	1	Total	O	S	0	0
			5	4	1		
4	B	1	Total	O	S	0	0
			5	4	1		
4	C	1	Total	O	S	0	0
			5	4	1		
4	C	1	Total	O	S	0	0
			5	4	1		
4	C	1	Total	O	S	0	0
			5	4	1		
4	C	1	Total	O	S	0	0
			5	4	1		
4	C	1	Total	O	S	0	0
			5	4	1		
4	C	1	Total	O	S	0	0
			5	4	1		
4	C	1	Total	O	S	0	0
			5	4	1		
4	D	1	Total	O	S	0	0
			5	4	1		
4	D	1	Total	O	S	0	0
			5	4	1		
4	D	1	Total	O	S	0	0
			5	4	1		
4	D	1	Total	O	S	0	0
			5	4	1		

- Molecule 5 is CITRIC ACID (three-letter code: CIT) (formula: C₆H₈O₇).

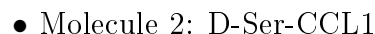
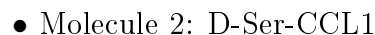


Mol	Chain	Residues	Atoms			ZeroOcc	AltConf
5	C	1	Total	C	O	0	0
			13	6	7		
5	D	1	Total	C	O	0	0
			13	6	7		

- Molecule 6 is water.

Mol	Chain	Residues	Atoms		ZeroOcc	AltConf
6	A	31	Total	O	0	0
			31	31		
6	B	32	Total	O	0	0
			32	32		
6	C	29	Total	O	0	0
			29	29		
6	D	20	Total	O	0	0
			20	20		

- Molecule 1: C-C motif chemokine 1



4 Data and refinement statistics

Property	Value	Source
Space group	P 1	Depositor
Cell constants a, b, c, α , β , γ	45.41Å 51.68Å 51.33Å 111.23° 106.33° 108.68°	Depositor
Resolution (Å)	39.12 – 2.10 39.12 – 2.10	Depositor EDS
% Data completeness (in resolution range)	(Not available) (39.12-2.10) 71.1 (39.12-2.10)	Depositor EDS
R_{merge}	0.16	Depositor
R_{sym}	(Not available)	Depositor
$\langle I/\sigma(I) \rangle$ ¹	3.23 (at 2.10Å)	Xtriage
Refinement program	BUSTER 2.8.0	Depositor
R, R_{free}	0.229 , 0.276 0.234 , 0.283	Depositor DCC
R_{free} test set	850 reflections (5.32%)	DCC
Wilson B-factor (Å ²)	31.2	Xtriage
Anisotropy	0.925	Xtriage
Bulk solvent k_{sol} (e/Å ³), B_{sol} (Å ²)	0.35 , 56.6	EDS
Estimated twinning fraction	0.000 for h,-h-k-l,k 0.000 for h,l,-h-k-l 0.439 for -h,-k,h+k+l 0.000 for -h,-l,-k 0.000 for -h,h+k+l,-l	Xtriage
L-test for twinning ²	$\langle L \rangle = 0.60$, $\langle L^2 \rangle = 0.46$	Xtriage
Outliers	0 of 16816 reflections	Xtriage
F_o, F_c correlation	0.95	EDS
Total number of atoms	2619	wwPDB-VP
Average B, all atoms (Å ²)	67.0	wwPDB-VP

Xtriage's analysis on translational NCS is as follows: *The largest off-origin peak in the Patterson function is 11.54% of the height of the origin peak. No significant pseudotranslation is detected.*

¹ Intensities estimated from amplitudes.

² Theoretical values of $\langle |L| \rangle$, $\langle L^2 \rangle$ for acentric reflections are 0.5, 0.375 respectively for untwinned datasets, and 0.333, 0.2 for perfectly twinned datasets.

5 Model quality ⓘ

5.1 Standard geometry ⓘ

Bond lengths and bond angles in the following residue types are not validated in this section: DIL, DTH, NAG, DVA, DTY, CIT, DPN, DPR, DHI, DAL, DGN, DGL, DAR, DCY, DTR, DLE, DAS, DSN, SO4, DSG, DLY, MED

The Z score for a bond length (or angle) is the number of standard deviations the observed value is removed from the expected value. A bond length (or angle) with $|Z| > 5$ is considered an outlier worth inspection. RMSZ is the root-mean-square of all Z scores of the bond lengths (or angles).

Mol	Chain	Bond lengths		Bond angles	
		RMSZ	$\# Z > 5$	RMSZ	$\# Z > 5$
1	A	0.45	0/598	0.75	0/798
1	B	0.47	0/598	0.75	0/798
2	C	0.18	0/9	0.68	0/6
2	D	0.24	0/9	0.65	0/6
All	All	0.46	0/1214	0.75	0/1608

There are no bond length outliers.

There are no bond angle outliers.

There are no chirality outliers.

There are no planarity outliers.

5.2 Too-close contacts ⓘ

In the following table, the Non-H and H(model) columns list the number of non-hydrogen atoms and hydrogen atoms in the chain respectively. The H(added) column lists the number of hydrogen atoms added and optimized by MolProbity. The Clashes column lists the number of clashes within the asymmetric unit, whereas Symm-Clashes lists symmetry related clashes.

Mol	Chain	Non-H	H(model)	H(added)	Clashes	Symm-Clashes
1	A	587	0	599	2	0
1	B	587	0	599	2	0
2	C	572	0	530	15	0
2	D	572	0	529	11	0
3	A	14	0	13	0	0
3	B	14	0	13	0	0
4	A	40	0	0	0	0
4	B	35	0	0	0	0
4	C	35	0	0	0	0

Continued on next page...

Continued from previous page...

Mol	Chain	Non-H	H(model)	H(added)	Clashes	Symm-Clashes
4	D	25	0	0	0	0
5	C	13	0	6	0	0
5	D	13	0	5	0	0
6	A	31	0	0	0	0
6	B	32	0	0	0	0
6	C	29	0	0	2	0
6	D	20	0	0	0	0
All	All	2619	0	2294	27	0

The all-atom clashscore is defined as the number of clashes found per 1000 atoms (including hydrogen atoms). The all-atom clashscore for this structure is 6.

All (27) close contacts within the same asymmetric unit are listed below, sorted by their clash magnitude.

Atom-1	Atom-2	Interatomic distance (Å)	Clash overlap (Å)
2:D:25:DIL:CD1	2:D:62:DHI:HD2	2.34	0.57
2:C:25:DIL:CD1	2:C:62:DHI:HD2	2.35	0.57
1:A:17:GLU:H	1:A:17:GLU:CD	2.10	0.55
2:D:5:DGN:HG2	2:D:7:DPR:HD2	1.89	0.54
1:B:17:GLU:CD	1:B:17:GLU:H	2.10	0.54
2:C:5:DGN:HG2	2:C:7:DPR:HD2	1.88	0.54
2:C:40:DLE:C	2:C:40:DLE:HD12	2.38	0.52
2:D:21:DPR:HB2	2:D:23:DAR:HG2	1.92	0.50
2:C:30:DSG:HB3	6:C:209:HOH:O	2.13	0.49
2:C:10:DAR:NH1	6:C:216:HOH:O	2.36	0.47
2:D:11:DCY:SG	2:D:35:DCY:CB	3.03	0.47
2:C:15:DPN:CE2	2:C:53:DLE:HD13	2.46	0.46
2:C:13:DPN:HD2	2:D:34:DIL:HG21	1.99	0.45
2:C:8:DPN:HB3	2:D:41:DIL:HG12	2.00	0.44
2:D:11:DCY:CB	2:D:35:DCY:SG	3.04	0.43
1:A:43:LYS:HA	1:A:49:GLU:HG3	1.99	0.43
2:C:54:DAS:O	2:C:60:DGN:HG3	2.18	0.43
1:B:43:LYS:HA	1:B:49:GLU:HG3	2.01	0.43
2:D:54:DAS:O	2:D:60:DGN:HG3	2.18	0.43
2:C:43:DLY:HG2	2:C:43:DLY:HZ1	1.59	0.42
2:D:40:DLE:HD22	2:D:40:DLE:C	2.49	0.42
2:C:19:DGL:HA	2:C:58:DTR:CE2	2.49	0.42
2:C:11:DCY:SG	2:C:35:DCY:CB	3.06	0.42
2:C:11:DCY:CB	2:C:35:DCY:SG	3.05	0.42
2:D:19:DGL:HA	2:D:58:DTR:CE2	2.50	0.42
2:C:34:DIL:HG21	2:D:13:DPN:HD2	2.03	0.41

Continued on next page...

Continued from previous page...

Atom-1	Atom-2	Interatomic distance (Å)	Clash overlap (Å)
2:C:28:DTY:O	2:C:68:DHI:HA	2.21	0.40

There are no symmetry-related clashes.

5.3 Torsion angles [i](#)

5.3.1 Protein backbone [i](#)

In the following table, the Percentiles column shows the percent Ramachandran outliers of the chain as a percentile score with respect to all X-ray entries followed by that with respect to entries of similar resolution.

The Analysed column shows the number of residues for which the backbone conformation was analysed, and the total number of residues.

Mol	Chain	Analysed	Favoured	Allowed	Outliers	Percentiles	
1	A	71/74 (96%)	68 (96%)	3 (4%)	0	100	100
1	B	71/74 (96%)	68 (96%)	3 (4%)	0	100	100
2	C	3/74 (4%)	3 (100%)	0	0	100	100
2	D	3/74 (4%)	3 (100%)	0	0	100	100
All	All	148/296 (50%)	142 (96%)	6 (4%)	0	100	100

There are no Ramachandran outliers to report.

5.3.2 Protein sidechains [i](#)

In the following table, the Percentiles column shows the percent sidechain outliers of the chain as a percentile score with respect to all X-ray entries followed by that with respect to entries of similar resolution.

The Analysed column shows the number of residues for which the sidechain conformation was analysed, and the total number of residues.

Mol	Chain	Analysed	Rotameric	Outliers	Percentiles	
1	A	66/67 (98%)	58 (88%)	8 (12%)	6	3
1	B	66/67 (98%)	57 (86%)	9 (14%)	5	2
All	All	132/134 (98%)	115 (87%)	17 (13%)	5	2

All (17) residues with a non-rotameric sidechain are listed below:

Mol	Chain	Res	Type
1	A	6	VAL
1	A	17	GLU
1	A	26	LEU
1	A	30	ASN
1	A	34	ILE
1	A	45	LYS
1	A	49	GLU
1	A	65	MET
1	B	2	LYS
1	B	6	VAL
1	B	17	GLU
1	B	26	LEU
1	B	30	ASN
1	B	34	ILE
1	B	45	LYS
1	B	49	GLU
1	B	65	MET

Some sidechains can be flipped to improve hydrogen bonding and reduce clashes. There are no such sidechains identified.

5.3.3 RNA ⓘ

There are no RNA molecules in this entry.

5.4 Non-standard residues in protein, DNA, RNA chains ⓘ

136 non-standard protein/DNA/RNA residues are modelled in this entry.

In the following table, the Counts columns list the number of bonds (or angles) for which Mogul statistics could be retrieved, the number of bonds (or angles) that are observed in the model and the number of bonds (or angles) that are defined in the chemical component dictionary. The Link column lists molecule types, if any, to which the group is linked. The Z score for a bond length (or angle) is the number of standard deviations the observed value is removed from the expected value. A bond length (or angle) with $|Z| > 2$ is considered an outlier worth inspection. RMSZ is the root-mean-square of all Z scores of the bond lengths (or angles).

Mol	Type	Chain	Res	Link	Bond lengths			Bond angles		
					Counts	RMSZ	$\# Z > 2$	Counts	RMSZ	$\# Z > 2$
2	DAR	C	10	2	6,10,11	0.50	0	5,11,13	0.90	0
2	DCY	C	11	2	4,5,6	0.69	0	3,5,7	1.55	0

Mol	Type	Chain	Res	Link	Bond lengths			Bond angles		
					Counts	RMSZ	# Z > 2	Counts	RMSZ	# Z > 2
2	DCY	C	12	2	4,5,6	1.12	0	3,5,7	1.59	0
2	DPN	C	13	2	10,11,12	0.75	0	10,13,15	0.72	1 (10%)
2	DSN	C	14	2	4,5,6	0.47	0	2,5,7	1.66	1 (50%)
2	DPN	C	15	2	10,11,12	0.90	0	10,13,15	0.58	0
2	DAL	C	16	2	3,4,5	0.63	0	0,4,6	0.00	-
2	DGL	C	17	2	4,8,9	0.71	0	3,9,11	0.97	0
2	DGN	C	18	2	7,8,9	0.75	0	6,9,11	0.84	0
2	DGL	C	19	2	4,8,9	0.78	0	3,9,11	0.94	0
2	DIL	C	20	2	6,7,8	0.64	0	7,8,10	1.76	3 (42%)
2	DPR	C	21	2	6,7,8	0.51	0	7,8,10	1.38	2 (28%)
2	DLE	C	22	2	6,7,8	0.35	0	6,8,10	0.88	1 (16%)
2	DAR	C	23	2	6,10,11	0.46	0	5,11,13	1.12	1 (20%)
2	DAL	C	24	2	3,4,5	0.61	0	0,4,6	0.00	-
2	DIL	C	25	2	6,7,8	0.34	0	7,8,10	1.21	1 (14%)
2	DLE	C	26	2	6,7,8	0.53	0	6,8,10	0.79	0
2	DCY	C	27	2	4,5,6	0.81	0	3,5,7	1.35	1 (33%)
2	DTY	C	28	2	11,12,13	0.35	0	12,15,17	0.60	0
2	DAR	C	29	2	6,10,11	0.49	0	5,11,13	0.97	1 (20%)
2	DSN	C	3	2	4,5,6	0.59	0	2,5,7	1.54	1 (50%)
2	DSG	C	30	2	6,7,8	0.48	0	5,8,10	0.96	1 (20%)
2	DTH	C	31	2	5,6,7	0.48	0	5,7,9	1.82	2 (40%)
2	DSN	C	32	2	4,5,6	0.55	0	2,5,7	1.74	1 (50%)
2	DSN	C	33	2	4,5,6	0.50	0	2,5,7	1.80	1 (50%)
2	DIL	C	34	2	6,7,8	0.43	0	7,8,10	1.33	2 (28%)
2	DCY	C	35	2	4,5,6	1.02	0	3,5,7	1.07	0
2	DSN	C	36	2	4,5,6	0.49	0	2,5,7	1.54	1 (50%)
2	DSG	C	37	2	6,7,8	0.61	0	5,8,10	0.74	0
2	DGL	C	38	2	4,8,9	0.53	0	3,9,11	1.31	1 (33%)
2	MED	C	4	2	6,7,8	0.76	0	4,7,9	1.08	0
2	DLE	C	40	2	6,7,8	0.43	0	6,8,10	1.64	1 (16%)
2	DIL	C	41	2	6,7,8	0.52	0	7,8,10	0.94	0
2	DPN	C	42	2	10,11,12	0.55	0	10,13,15	0.77	1 (10%)
2	DLY	C	43	2	7,8,9	0.61	0	6,8,10	0.94	1 (16%)
2	DLE	C	44	2	6,7,8	0.50	0	6,8,10	0.98	0
2	DLY	C	45	2	7,8,9	0.51	0	6,8,10	1.04	1 (16%)
2	DAR	C	46	2	6,10,11	0.47	0	5,11,13	1.08	1 (20%)
2	DLY	C	48	2	7,8,9	0.52	0	6,8,10	0.97	1 (16%)

Mol	Type	Chain	Res	Link	Bond lengths			Bond angles		
					Counts	RMSZ	# Z > 2	Counts	RMSZ	# Z > 2
2	DGL	C	49	2	4,8,9	0.41	0	3,9,11	1.29	1 (33%)
2	DGN	C	5	2	7,8,9	0.56	0	6,9,11	0.96	1 (16%)
2	DAL	C	50	2	3,4,5	0.56	0	0,4,6	0.00	-
2	DCY	C	51	2	4,5,6	1.08	0	3,5,7	1.80	1 (33%)
2	DAL	C	52	2	3,4,5	0.58	0	0,4,6	0.00	-
2	DLE	C	53	2	6,7,8	0.53	0	6,8,10	1.01	1 (16%)
2	DAS	C	54	2	3,7,8	0.89	0	1,8,10	2.23	1 (100%)
2	DTH	C	55	2	5,6,7	0.43	0	5,7,9	1.14	1 (20%)
2	DVA	C	56	2	5,6,7	0.39	0	5,7,9	0.81	0
2	DTR	C	58	2	13,15,16	0.63	0	8,20,22	1.25	1 (12%)
2	DVA	C	59	2	5,6,7	0.39	0	5,7,9	0.90	0
2	DVA	C	6	2	5,6,7	0.33	0	5,7,9	0.72	0
2	DGN	C	60	2	7,8,9	0.44	0	6,9,11	0.90	1 (16%)
2	DAR	C	61	2	6,10,11	0.66	0	5,11,13	0.92	1 (20%)
2	DHI	C	62	2	5,10,11	0.63	0	3,12,14	1.75	2 (66%)
2	DAR	C	63	2	6,10,11	0.43	0	5,11,13	1.17	1 (20%)
2	DLY	C	64	2	7,8,9	0.43	0	6,8,10	0.96	1 (16%)
2	MED	C	65	2	6,7,8	0.50	0	4,7,9	1.10	1 (25%)
2	DLE	C	66	2	6,7,8	0.50	0	6,8,10	0.96	0
2	DAR	C	67	2	6,10,11	0.51	0	5,11,13	0.85	0
2	DHI	C	68	2	5,10,11	0.53	0	3,12,14	1.84	2 (66%)
2	DCY	C	69	2	4,5,6	0.58	0	3,5,7	1.72	2 (66%)
2	DPR	C	7	2	6,7,8	0.47	0	7,8,10	1.64	2 (28%)
2	DPR	C	70	2	6,7,8	0.42	0	7,8,10	1.28	0
2	DSN	C	71	2	4,5,6	0.50	0	2,5,7	1.87	1 (50%)
2	DLY	C	72	2	7,8,9	0.44	0	6,8,10	0.96	1 (16%)
2	DAR	C	73	2	6,10,11	0.41	0	5,11,13	0.97	1 (20%)
2	DPN	C	8	2	10,11,12	0.61	0	10,13,15	0.63	0
2	DSN	C	9	2	4,5,6	0.66	0	2,5,7	1.78	1 (50%)
2	DAR	D	10	2	6,10,11	0.57	0	5,11,13	0.92	0
2	DCY	D	11	2	4,5,6	0.71	0	3,5,7	1.63	1 (33%)
2	DCY	D	12	2	4,5,6	1.34	1 (25%)	3,5,7	1.66	0
2	DPN	D	13	2	10,11,12	0.92	0	10,13,15	0.71	0
2	DSN	D	14	2	4,5,6	0.29	0	2,5,7	1.58	1 (50%)
2	DPN	D	15	2	10,11,12	0.78	0	10,13,15	0.61	0
2	DAL	D	16	2	3,4,5	0.70	0	0,4,6	0.00	-
2	DGL	D	17	2	4,8,9	0.66	0	3,9,11	0.90	0
2	DGN	D	18	2	7,8,9	0.75	0	6,9,11	0.79	0

Mol	Type	Chain	Res	Link	Bond lengths			Bond angles		
					Counts	RMSZ	# Z > 2	Counts	RMSZ	# Z > 2
2	DGL	D	19	2	4,8,9	0.89	0	3,9,11	0.91	0
2	DIL	D	20	2	6,7,8	0.50	0	7,8,10	1.76	2 (28%)
2	DPR	D	21	2	6,7,8	0.45	0	7,8,10	1.44	3 (42%)
2	DLE	D	22	2	6,7,8	0.34	0	6,8,10	0.87	1 (16%)
2	DAR	D	23	2	6,10,11	0.56	0	5,11,13	1.01	1 (20%)
2	DAL	D	24	2	3,4,5	0.55	0	0,4,6	0.00	-
2	DIL	D	25	2	6,7,8	0.32	0	7,8,10	1.27	1 (14%)
2	DLE	D	26	2	6,7,8	0.45	0	6,8,10	0.75	0
2	DCY	D	27	2	4,5,6	0.90	0	3,5,7	1.37	1 (33%)
2	DTY	D	28	2	11,12,13	0.35	0	12,15,17	0.58	0
2	DAR	D	29	2	6,10,11	0.47	0	5,11,13	0.98	1 (20%)
2	DSN	D	3	2	4,5,6	0.59	0	2,5,7	1.56	1 (50%)
2	DSG	D	30	2	6,7,8	0.48	0	5,8,10	0.83	0
2	DTH	D	31	2	5,6,7	0.54	0	5,7,9	1.78	2 (40%)
2	DSN	D	32	2	4,5,6	0.53	0	2,5,7	1.75	1 (50%)
2	DSN	D	33	2	4,5,6	0.50	0	2,5,7	1.72	1 (50%)
2	DIL	D	34	2	6,7,8	0.39	0	7,8,10	1.27	2 (28%)
2	DCY	D	35	2	4,5,6	1.04	0	3,5,7	1.08	0
2	DSN	D	36	2	4,5,6	0.55	0	2,5,7	1.45	1 (50%)
2	DSG	D	37	2	6,7,8	0.60	0	5,8,10	0.77	0
2	DGL	D	38	2	4,8,9	0.44	0	3,9,11	1.31	1 (33%)
2	MED	D	4	2	6,7,8	0.73	0	4,7,9	1.04	0
2	DLE	D	40	2	6,7,8	0.45	0	6,8,10	1.72	1 (16%)
2	DIL	D	41	2	6,7,8	0.62	0	7,8,10	0.98	0
2	DPN	D	42	2	10,11,12	0.65	0	10,13,15	0.77	1 (10%)
2	DLY	D	43	2	7,8,9	0.70	0	6,8,10	0.95	1 (16%)
2	DLE	D	44	2	6,7,8	0.47	0	6,8,10	1.00	0
2	DLY	D	45	2	7,8,9	0.49	0	6,8,10	1.08	1 (16%)
2	DAR	D	46	2	6,10,11	0.48	0	5,11,13	1.15	1 (20%)
2	DLY	D	48	2	7,8,9	0.47	0	6,8,10	0.96	1 (16%)
2	DGL	D	49	2	4,8,9	0.41	0	3,9,11	1.26	1 (33%)
2	DGN	D	5	2	7,8,9	0.60	0	6,9,11	0.97	1 (16%)
2	DAL	D	50	2	3,4,5	0.44	0	0,4,6	0.00	-
2	DCY	D	51	2	4,5,6	1.27	1 (25%)	3,5,7	1.83	1 (33%)
2	DAL	D	52	2	3,4,5	0.58	0	0,4,6	0.00	-
2	DLE	D	53	2	6,7,8	0.47	0	6,8,10	0.97	1 (16%)
2	DAS	D	54	2	3,7,8	0.83	0	1,8,10	2.15	1 (100%)

Mol	Type	Chain	Res	Link	Bond lengths			Bond angles		
					Counts	RMSZ	# Z > 2	Counts	RMSZ	# Z > 2
2	DTH	D	55	2	5,6,7	0.49	0	5,7,9	1.09	1 (20%)
2	DVA	D	56	2	5,6,7	0.49	0	5,7,9	0.78	0
2	DTR	D	58	2	13,15,16	0.75	0	8,20,22	1.22	1 (12%)
2	DVA	D	59	2	5,6,7	0.39	0	5,7,9	0.94	0
2	DVA	D	6	2	5,6,7	0.32	0	5,7,9	0.76	0
2	DGN	D	60	2	7,8,9	0.45	0	6,9,11	0.87	1 (16%)
2	DAR	D	61	2	6,10,11	0.70	0	5,11,13	0.94	1 (20%)
2	DHI	D	62	2	5,10,11	0.63	0	3,12,14	1.76	2 (66%)
2	DAR	D	63	2	6,10,11	0.46	0	5,11,13	1.20	1 (20%)
2	DLY	D	64	2	7,8,9	0.42	0	6,8,10	0.96	1 (16%)
2	MED	D	65	2	6,7,8	0.59	0	4,7,9	1.11	1 (25%)
2	DLE	D	66	2	6,7,8	0.46	0	6,8,10	1.03	0
2	DAR	D	67	2	6,10,11	0.49	0	5,11,13	0.87	0
2	DHI	D	68	2	5,10,11	0.52	0	3,12,14	1.89	2 (66%)
2	DCY	D	69	2	4,5,6	0.64	0	3,5,7	1.69	1 (33%)
2	DPR	D	7	2	6,7,8	0.56	0	7,8,10	1.57	2 (28%)
2	DPR	D	70	2	6,7,8	0.50	0	7,8,10	1.30	0
2	DSN	D	71	2	4,5,6	0.50	0	2,5,7	1.86	1 (50%)
2	DLY	D	72	2	7,8,9	0.46	0	6,8,10	1.00	1 (16%)
2	DAR	D	73	2	6,10,11	0.45	0	5,11,13	0.94	1 (20%)
2	DPN	D	8	2	10,11,12	0.63	0	10,13,15	0.65	0
2	DSN	D	9	2	4,5,6	0.53	0	2,5,7	1.68	1 (50%)

In the following table, the Chirals column lists the number of chiral outliers, the number of chiral centers analysed, the number of these observed in the model and the number defined in the chemical component dictionary. Similar counts are reported in the Torsion and Rings columns. '-' means no outliers of that kind were identified.

Mol	Type	Chain	Res	Link	Chirals	Torsions	Rings
2	DAR	C	10	2	-	0/5/9/11	0/0/0/0
2	DCY	C	11	2	-	0/1/4/6	0/0/0/0
2	DCY	C	12	2	-	0/1/4/6	0/0/0/0
2	DPN	C	13	2	-	0/4/6/8	0/1/1/1
2	DSN	C	14	2	-	0/2/4/6	0/0/0/0
2	DPN	C	15	2	-	0/4/6/8	0/1/1/1
2	DAL	C	16	2	-	0/0/2/4	0/0/0/0
2	DGL	C	17	2	-	0/3/7/9	0/0/0/0
2	DGN	C	18	2	-	0/5/7/9	0/0/0/0
2	DGL	C	19	2	-	0/3/7/9	0/0/0/0

Continued on next page...

Continued from previous page...

Mol	Type	Chain	Res	Link	Chirals	Torsions	Rings
2	DIL	C	20	2	-	0/6/8/10	0/0/0/0
2	DPR	C	21	2	-	0/0/9/11	0/1/1/1
2	DLE	C	22	2	-	0/4/6/8	0/0/0/0
2	DAR	C	23	2	-	0/5/9/11	0/0/0/0
2	DAL	C	24	2	-	0/0/2/4	0/0/0/0
2	DIL	C	25	2	-	0/6/8/10	0/0/0/0
2	DLE	C	26	2	-	0/4/6/8	0/0/0/0
2	DCY	C	27	2	-	0/1/4/6	0/0/0/0
2	DTY	C	28	2	-	0/4/6/8	0/1/1/1
2	DAR	C	29	2	-	0/5/9/11	0/0/0/0
2	DSN	C	3	2	-	0/2/4/6	0/0/0/0
2	DSG	C	30	2	-	0/4/6/8	0/0/0/0
2	DTH	C	31	2	-	0/4/6/8	0/0/0/0
2	DSN	C	32	2	-	0/2/4/6	0/0/0/0
2	DSN	C	33	2	-	0/2/4/6	0/0/0/0
2	DIL	C	34	2	-	0/6/8/10	0/0/0/0
2	DCY	C	35	2	-	0/1/4/6	0/0/0/0
2	DSN	C	36	2	-	0/2/4/6	0/0/0/0
2	DSG	C	37	2	-	0/4/6/8	0/0/0/0
2	DGL	C	38	2	-	0/3/7/9	0/0/0/0
2	MED	C	4	2	-	0/4/6/8	0/0/0/0
2	DLE	C	40	2	-	0/4/6/8	0/0/0/0
2	DIL	C	41	2	-	0/6/8/10	0/0/0/0
2	DPN	C	42	2	-	0/4/6/8	0/1/1/1
2	DLY	C	43	2	-	0/5/7/9	0/0/0/0
2	DLE	C	44	2	-	0/4/6/8	0/0/0/0
2	DLY	C	45	2	-	0/5/7/9	0/0/0/0
2	DAR	C	46	2	-	0/5/9/11	0/0/0/0
2	DLY	C	48	2	-	0/5/7/9	0/0/0/0
2	DGL	C	49	2	-	0/3/7/9	0/0/0/0
2	DGN	C	5	2	-	0/5/7/9	0/0/0/0
2	DAL	C	50	2	-	0/0/2/4	0/0/0/0
2	DCY	C	51	2	-	0/1/4/6	0/0/0/0
2	DAL	C	52	2	-	0/0/2/4	0/0/0/0
2	DLE	C	53	2	-	0/4/6/8	0/0/0/0
2	DAS	C	54	2	-	0/2/6/8	0/0/0/0
2	DTH	C	55	2	-	0/4/6/8	0/0/0/0
2	DVA	C	56	2	-	0/4/6/8	0/0/0/0
2	DTR	C	58	2	-	0/3/6/8	0/2/2/2
2	DVA	C	59	2	-	0/4/6/8	0/0/0/0
2	DVA	C	6	2	-	0/4/6/8	0/0/0/0
2	DGN	C	60	2	-	0/5/7/9	0/0/0/0

Continued on next page...

Continued from previous page...

Mol	Type	Chain	Res	Link	Chirals	Torsions	Rings
2	DAR	C	61	2	-	0/5/9/11	0/0/0/0
2	DHI	C	62	2	-	0/4/6/8	0/1/1/1
2	DAR	C	63	2	-	0/5/9/11	0/0/0/0
2	DLY	C	64	2	-	0/5/7/9	0/0/0/0
2	MED	C	65	2	-	0/4/6/8	0/0/0/0
2	DLE	C	66	2	-	0/4/6/8	0/0/0/0
2	DAR	C	67	2	-	0/5/9/11	0/0/0/0
2	DHI	C	68	2	-	0/4/6/8	0/1/1/1
2	DCY	C	69	2	-	0/1/4/6	0/0/0/0
2	DPR	C	7	2	-	0/0/9/11	0/1/1/1
2	DPR	C	70	2	-	0/0/9/11	0/1/1/1
2	DSN	C	71	2	-	0/2/4/6	0/0/0/0
2	DLY	C	72	2	-	0/5/7/9	0/0/0/0
2	DAR	C	73	2	-	0/5/9/11	0/0/0/0
2	DPN	C	8	2	-	0/4/6/8	0/1/1/1
2	DSN	C	9	2	-	0/2/4/6	0/0/0/0
2	DAR	D	10	2	-	0/5/9/11	0/0/0/0
2	DCY	D	11	2	-	0/1/4/6	0/0/0/0
2	DCY	D	12	2	-	0/1/4/6	0/0/0/0
2	DPN	D	13	2	-	0/4/6/8	0/1/1/1
2	DSN	D	14	2	-	0/2/4/6	0/0/0/0
2	DPN	D	15	2	-	0/4/6/8	0/1/1/1
2	DAL	D	16	2	-	0/0/2/4	0/0/0/0
2	DGL	D	17	2	-	0/3/7/9	0/0/0/0
2	DGN	D	18	2	-	0/5/7/9	0/0/0/0
2	DGL	D	19	2	-	0/3/7/9	0/0/0/0
2	DIL	D	20	2	-	0/6/8/10	0/0/0/0
2	DPR	D	21	2	-	0/0/9/11	0/1/1/1
2	DLE	D	22	2	-	0/4/6/8	0/0/0/0
2	DAR	D	23	2	-	0/5/9/11	0/0/0/0
2	DAL	D	24	2	-	0/0/2/4	0/0/0/0
2	DIL	D	25	2	-	0/6/8/10	0/0/0/0
2	DLE	D	26	2	-	0/4/6/8	0/0/0/0
2	DCY	D	27	2	-	0/1/4/6	0/0/0/0
2	DTY	D	28	2	-	0/4/6/8	0/1/1/1
2	DAR	D	29	2	-	0/5/9/11	0/0/0/0
2	DSN	D	3	2	-	0/2/4/6	0/0/0/0
2	DSG	D	30	2	-	0/4/6/8	0/0/0/0
2	DTH	D	31	2	-	0/4/6/8	0/0/0/0
2	DSN	D	32	2	-	0/2/4/6	0/0/0/0
2	DSN	D	33	2	-	0/2/4/6	0/0/0/0
2	DIL	D	34	2	-	0/6/8/10	0/0/0/0

Continued on next page...

Continued from previous page...

Mol	Type	Chain	Res	Link	Chirals	Torsions	Rings
2	DCY	D	35	2	-	0/1/4/6	0/0/0/0
2	DSN	D	36	2	-	0/2/4/6	0/0/0/0
2	DSG	D	37	2	-	0/4/6/8	0/0/0/0
2	DGL	D	38	2	-	0/3/7/9	0/0/0/0
2	MED	D	4	2	-	0/4/6/8	0/0/0/0
2	DLE	D	40	2	-	0/4/6/8	0/0/0/0
2	DIL	D	41	2	-	0/6/8/10	0/0/0/0
2	DPN	D	42	2	-	0/4/6/8	0/1/1/1
2	DLY	D	43	2	-	0/5/7/9	0/0/0/0
2	DLE	D	44	2	-	0/4/6/8	0/0/0/0
2	DLY	D	45	2	-	0/5/7/9	0/0/0/0
2	DAR	D	46	2	-	0/5/9/11	0/0/0/0
2	DLY	D	48	2	-	0/5/7/9	0/0/0/0
2	DGL	D	49	2	-	0/3/7/9	0/0/0/0
2	DGN	D	5	2	-	0/5/7/9	0/0/0/0
2	DAL	D	50	2	-	0/0/2/4	0/0/0/0
2	DCY	D	51	2	-	0/1/4/6	0/0/0/0
2	DAL	D	52	2	-	0/0/2/4	0/0/0/0
2	DLE	D	53	2	-	0/4/6/8	0/0/0/0
2	DAS	D	54	2	-	0/2/6/8	0/0/0/0
2	DTH	D	55	2	-	0/4/6/8	0/0/0/0
2	DVA	D	56	2	-	0/4/6/8	0/0/0/0
2	DTR	D	58	2	-	0/3/6/8	0/2/2/2
2	DVA	D	59	2	-	0/4/6/8	0/0/0/0
2	DVA	D	6	2	-	0/4/6/8	0/0/0/0
2	DGN	D	60	2	-	0/5/7/9	0/0/0/0
2	DAR	D	61	2	-	0/5/9/11	0/0/0/0
2	DHI	D	62	2	-	0/4/6/8	0/1/1/1
2	DAR	D	63	2	-	0/5/9/11	0/0/0/0
2	DLY	D	64	2	-	0/5/7/9	0/0/0/0
2	MED	D	65	2	-	0/4/6/8	0/0/0/0
2	DLE	D	66	2	-	0/4/6/8	0/0/0/0
2	DAR	D	67	2	-	0/5/9/11	0/0/0/0
2	DHI	D	68	2	-	0/4/6/8	0/1/1/1
2	DCY	D	69	2	-	0/1/4/6	0/0/0/0
2	DPR	D	7	2	-	0/0/9/11	0/1/1/1
2	DPR	D	70	2	-	0/0/9/11	0/1/1/1
2	DSN	D	71	2	-	0/2/4/6	0/0/0/0
2	DLY	D	72	2	-	0/5/7/9	0/0/0/0
2	DAR	D	73	2	-	0/5/9/11	0/0/0/0
2	DPN	D	8	2	-	0/4/6/8	0/1/1/1
2	DSN	D	9	2	-	0/2/4/6	0/0/0/0

All (2) bond length outliers are listed below:

Mol	Chain	Res	Type	Atoms	Z	Observed(Å)	Ideal(Å)
2	D	12	DCY	CB-SG	-2.45	1.76	1.81
2	D	51	DCY	CB-SG	-2.32	1.76	1.81

All (102) bond angle outliers are listed below:

Mol	Chain	Res	Type	Atoms	Z	Observed(°)	Ideal(°)
2	C	20	DIL	C-CA-N	-3.13	103.29	109.83
2	D	20	DIL	C-CA-N	-3.07	103.41	109.83
2	C	7	DPR	CB-CA-C	-2.93	108.75	112.76
2	D	20	DIL	O-C-CA	-2.78	118.10	125.44
2	C	20	DIL	O-C-CA	-2.72	118.25	125.44
2	D	7	DPR	CB-CA-C	-2.69	109.08	112.76
2	C	31	DTH	C-CA-N	-2.69	104.20	109.83
2	D	31	DTH	C-CA-N	-2.65	104.30	109.83
2	C	71	DSN	O-C-CA	-2.60	118.72	125.49
2	D	71	DSN	O-C-CA	-2.57	118.80	125.49
2	D	63	DAR	O-C-CA	-2.56	118.83	125.49
2	D	45	DLY	O-C-CA	-2.52	118.92	125.49
2	C	63	DAR	O-C-CA	-2.52	118.94	125.49
2	C	9	DSN	O-C-CA	-2.49	119.01	125.49
2	D	68	DHI	O-C-CA	-2.43	119.16	125.49
2	C	31	DTH	O-C-CA	-2.41	119.07	125.44
2	C	45	DLY	O-C-CA	-2.41	119.22	125.49
2	C	51	DCY	O-C-CA	-2.39	119.28	125.49
2	D	58	DTR	O-C-CA	-2.38	119.29	125.49
2	C	58	DTR	O-C-CA	-2.38	119.29	125.49
2	C	32	DSN	O-C-CA	-2.35	119.36	125.49
2	D	46	DAR	O-C-CA	-2.35	119.38	125.49
2	C	46	DAR	O-C-CA	-2.34	119.39	125.49
2	D	51	DCY	O-C-CA	-2.34	119.40	125.49
2	C	42	DPN	O-C-CA	-2.33	119.42	125.49
2	D	9	DSN	O-C-CA	-2.33	119.42	125.49
2	D	32	DSN	O-C-CA	-2.32	119.44	125.49
2	C	68	DHI	O-C-CA	-2.32	119.45	125.49
2	D	31	DTH	O-C-CA	-2.30	119.35	125.44
2	C	14	DSN	O-C-CA	-2.30	119.50	125.49
2	D	5	DGN	O-C-CA	-2.30	119.50	125.49
2	C	5	DGN	O-C-CA	-2.29	119.52	125.49
2	D	38	DGL	O-C-CA	-2.27	119.57	125.49
2	C	38	DGL	O-C-CA	-2.27	119.57	125.49
2	C	34	DIL	O-C-CA	-2.27	119.44	125.44
2	D	42	DPN	O-C-CA	-2.25	119.64	125.49

Continued on next page...

Continued from previous page...

Mol	Chain	Res	Type	Atoms	Z	Observed(°)	Ideal(°)
2	D	33	DSN	O-C-CA	-2.23	119.68	125.49
2	D	14	DSN	O-C-CA	-2.23	119.68	125.49
2	C	54	DAS	O-C-CA	-2.23	119.68	125.49
2	C	33	DSN	O-C-CA	-2.22	119.70	125.49
2	D	34	DIL	O-C-CA	-2.22	119.58	125.44
2	D	27	DCY	O-C-CA	-2.22	119.72	125.49
2	C	7	DPR	O-C-CA	-2.21	119.60	125.44
2	C	23	DAR	O-C-CA	-2.21	119.74	125.49
2	C	49	DGL	O-C-CA	-2.21	119.74	125.49
2	D	7	DPR	O-C-CA	-2.20	119.62	125.44
2	C	48	DLY	O-C-CA	-2.20	119.77	125.49
2	C	64	DLY	O-C-CA	-2.19	119.79	125.49
2	D	3	DSN	O-C-CA	-2.18	119.80	125.49
2	D	65	MED	O-C-CA	-2.18	119.82	125.49
2	D	48	DLY	O-C-CA	-2.17	119.83	125.49
2	D	64	DLY	O-C-CA	-2.17	119.84	125.49
2	D	43	DLY	O-C-CA	-2.17	119.85	125.49
2	C	65	MED	O-C-CA	-2.17	119.85	125.49
2	C	73	DAR	O-C-CA	-2.16	119.85	125.49
2	C	36	DSN	O-C-CA	-2.16	119.86	125.49
2	C	3	DSN	O-C-CA	-2.16	119.87	125.49
2	D	54	DAS	O-C-CA	-2.15	119.89	125.49
2	C	60	DGN	O-C-CA	-2.15	119.90	125.49
2	C	43	DLY	O-C-CA	-2.14	119.91	125.49
2	D	69	DCY	CB-CA-C	-2.14	106.23	111.47
2	C	27	DCY	O-C-CA	-2.14	119.91	125.49
2	D	21	DPR	CB-CA-C	-2.14	109.84	112.76
2	D	49	DGL	O-C-CA	-2.13	119.93	125.49
2	D	11	DCY	O-C-CA	-2.13	119.94	125.49
2	C	69	DCY	O-C-CA	-2.13	119.94	125.49
2	D	72	DLY	O-C-CA	-2.11	119.98	125.49
2	C	72	DLY	O-C-CA	-2.10	120.01	125.49
2	D	22	DLE	O-C-CA	-2.10	120.01	125.49
2	D	53	DLE	O-C-CA	-2.10	120.03	125.49
2	D	60	DGN	O-C-CA	-2.09	120.03	125.49
2	C	22	DLE	O-C-CA	-2.09	120.04	125.49
2	D	62	DHI	O-C-CA	-2.09	120.05	125.49
2	C	29	DAR	O-C-CA	-2.08	120.06	125.49
2	D	29	DAR	O-C-CA	-2.08	120.07	125.49
2	D	73	DAR	O-C-CA	-2.08	120.07	125.49
2	D	21	DPR	O-C-CA	-2.08	119.95	125.44
2	C	55	DTH	O-C-CA	-2.07	119.97	125.44

Continued on next page...

Continued from previous page...

Mol	Chain	Res	Type	Atoms	Z	Observed(°)	Ideal(°)
2	C	62	DHI	O-C-CA	-2.06	120.12	125.49
2	D	61	DAR	O-C-CA	-2.06	120.12	125.49
2	C	69	DCY	CB-CA-C	-2.06	106.44	111.47
2	D	23	DAR	O-C-CA	-2.05	120.15	125.49
2	C	21	DPR	O-C-CA	-2.05	120.04	125.44
2	C	20	DIL	CB-CA-C	-2.04	109.51	112.79
2	D	36	DSN	O-C-CA	-2.04	120.19	125.49
2	C	61	DAR	O-C-CA	-2.02	120.23	125.49
2	C	13	DPN	O-C-CA	-2.02	120.23	125.49
2	D	55	DTH	O-C-CA	-2.02	120.11	125.44
2	C	30	DSG	O-C-CA	-2.01	120.26	125.49
2	C	53	DLE	O-C-CA	-2.01	120.27	125.49
2	D	21	DPR	CD-N-CA	2.00	112.06	107.20
2	C	21	DPR	CD-N-CA	2.01	112.09	107.20
2	C	68	DHI	CD2-NE2-CE1	2.05	108.94	105.71
2	D	68	DHI	CD2-NE2-CE1	2.06	108.95	105.71
2	D	34	DIL	C-CA-N	2.06	114.13	109.83
2	C	62	DHI	CD2-NE2-CE1	2.06	108.96	105.71
2	D	62	DHI	CD2-NE2-CE1	2.07	108.97	105.71
2	C	34	DIL	C-CA-N	2.08	114.17	109.83
2	C	25	DIL	C-CA-N	2.36	114.77	109.83
2	D	25	DIL	C-CA-N	2.47	114.99	109.83
2	C	40	DLE	CG-CB-CA	2.84	120.82	114.86
2	D	40	DLE	CG-CB-CA	3.27	121.73	114.86

There are no chirality outliers.

There are no torsion outliers.

There are no ring outliers.

37 monomers are involved in 23 short contacts:

Mol	Chain	Res	Type	Clashes	Symm-Clashes
2	C	10	DAR	1	0
2	C	11	DCY	2	0
2	C	13	DPN	1	0
2	C	15	DPN	1	0
2	C	19	DGL	1	0
2	C	25	DIL	1	0
2	C	28	DTY	1	0
2	C	30	DSG	1	0
2	C	34	DIL	1	0
2	C	35	DCY	2	0

Continued on next page...

Continued from previous page...

Mol	Chain	Res	Type	Clashes	Symm-Clashes
2	C	40	DLE	1	0
2	C	43	DLY	1	0
2	C	5	DGN	1	0
2	C	53	DLE	1	0
2	C	54	DAS	1	0
2	C	58	DTR	1	0
2	C	60	DGN	1	0
2	C	62	DHI	1	0
2	C	68	DHI	1	0
2	C	7	DPR	1	0
2	C	8	DPN	1	0
2	D	11	DCY	2	0
2	D	13	DPN	1	0
2	D	19	DGL	1	0
2	D	21	DPR	1	0
2	D	23	DAR	1	0
2	D	25	DIL	1	0
2	D	34	DIL	1	0
2	D	35	DCY	2	0
2	D	40	DLE	1	0
2	D	41	DIL	1	0
2	D	5	DGN	1	0
2	D	54	DAS	1	0
2	D	58	DTR	1	0
2	D	60	DGN	1	0
2	D	62	DHI	1	0
2	D	7	DPR	1	0

5.5 Carbohydrates [i](#)

There are no carbohydrates in this entry.

5.6 Ligand geometry [i](#)

31 ligands are modelled in this entry.

In the following table, the Counts columns list the number of bonds (or angles) for which Mogul statistics could be retrieved, the number of bonds (or angles) that are observed in the model and the number of bonds (or angles) that are defined in the chemical component dictionary. The Link column lists molecule types, if any, to which the group is linked. The Z score for a bond length (or angle) is the number of standard deviations the observed value is removed from the expected

value. A bond length (or angle) with $|Z| > 2$ is considered an outlier worth inspection. RMSZ is the root-mean-square of all Z scores of the bond lengths (or angles).

Mol	Type	Chain	Res	Link	Bond lengths			Bond angles		
					Counts	RMSZ	$\# Z > 2$	Counts	RMSZ	$\# Z > 2$
3	NAG	A	101	1	14,14,15	1.55	2 (14%)	15,19,21	1.35	3 (20%)
4	SO4	A	102	-	4,4,4	0.35	0	6,6,6	0.16	0
4	SO4	A	103	-	4,4,4	0.36	0	6,6,6	0.12	0
4	SO4	A	104	-	4,4,4	1.06	0	6,6,6	0.33	0
4	SO4	A	105	-	4,4,4	0.16	0	6,6,6	0.18	0
4	SO4	A	106	-	4,4,4	0.57	0	6,6,6	0.16	0
4	SO4	A	107	-	4,4,4	0.28	0	6,6,6	0.10	0
4	SO4	A	108	-	4,4,4	0.13	0	6,6,6	0.10	0
4	SO4	A	109	-	4,4,4	0.38	0	6,6,6	0.26	0
3	NAG	B	101	1	14,14,15	1.51	2 (14%)	15,19,21	1.31	3 (20%)
4	SO4	B	102	-	4,4,4	0.05	0	6,6,6	0.12	0
4	SO4	B	103	-	4,4,4	0.13	0	6,6,6	0.10	0
4	SO4	B	104	-	4,4,4	0.21	0	6,6,6	0.26	0
4	SO4	B	105	-	4,4,4	0.30	0	6,6,6	0.14	0
4	SO4	B	106	-	4,4,4	0.25	0	6,6,6	0.16	0
4	SO4	B	107	-	4,4,4	0.37	0	6,6,6	0.12	0
4	SO4	B	108	-	4,4,4	0.25	0	6,6,6	0.08	0
4	SO4	C	101	-	4,4,4	0.30	0	6,6,6	0.12	0
4	SO4	C	102	-	4,4,4	0.18	0	6,6,6	0.11	0
4	SO4	C	103	-	4,4,4	0.28	0	6,6,6	0.14	0
4	SO4	C	104	-	4,4,4	0.46	0	6,6,6	0.13	0
4	SO4	C	105	-	4,4,4	0.36	0	6,6,6	0.14	0
4	SO4	C	106	-	4,4,4	0.21	0	6,6,6	0.15	0
4	SO4	C	107	-	4,4,4	0.24	0	6,6,6	0.20	0
5	CIT	C	108	-	3,12,12	0.67	0	3,17,17	1.62	1 (33%)
4	SO4	D	101	-	4,4,4	0.24	0	6,6,6	0.11	0
4	SO4	D	102	-	4,4,4	0.49	0	6,6,6	0.29	0
4	SO4	D	103	-	4,4,4	0.15	0	6,6,6	0.15	0
4	SO4	D	104	-	4,4,4	0.25	0	6,6,6	0.12	0
4	SO4	D	105	-	4,4,4	0.35	0	6,6,6	0.11	0
5	CIT	D	106	-	3,12,12	1.69	0	3,17,17	1.42	1 (33%)

In the following table, the Chirals column lists the number of chiral outliers, the number of chiral centers analysed, the number of these observed in the model and the number defined in the chemical component dictionary. Similar counts are reported in the Torsion and Rings columns. '-' means no outliers of that kind were identified.

Mol	Type	Chain	Res	Link	Chirals	Torsions	Rings
3	NAG	A	101	1	-	0/6/23/26	0/1/1/1

Continued on next page...

Continued from previous page...

Mol	Type	Chain	Res	Link	Chirals	Torsions	Rings
4	SO4	A	102	-	-	0/0/0/0	0/0/0/0
4	SO4	A	103	-	-	0/0/0/0	0/0/0/0
4	SO4	A	104	-	-	0/0/0/0	0/0/0/0
4	SO4	A	105	-	-	0/0/0/0	0/0/0/0
4	SO4	A	106	-	-	0/0/0/0	0/0/0/0
4	SO4	A	107	-	-	0/0/0/0	0/0/0/0
4	SO4	A	108	-	-	0/0/0/0	0/0/0/0
4	SO4	A	109	-	-	0/0/0/0	0/0/0/0
3	NAG	B	101	1	-	0/6/23/26	0/1/1/1
4	SO4	B	102	-	-	0/0/0/0	0/0/0/0
4	SO4	B	103	-	-	0/0/0/0	0/0/0/0
4	SO4	B	104	-	-	0/0/0/0	0/0/0/0
4	SO4	B	105	-	-	0/0/0/0	0/0/0/0
4	SO4	B	106	-	-	0/0/0/0	0/0/0/0
4	SO4	B	107	-	-	0/0/0/0	0/0/0/0
4	SO4	B	108	-	-	0/0/0/0	0/0/0/0
4	SO4	C	101	-	-	0/0/0/0	0/0/0/0
4	SO4	C	102	-	-	0/0/0/0	0/0/0/0
4	SO4	C	103	-	-	0/0/0/0	0/0/0/0
4	SO4	C	104	-	-	0/0/0/0	0/0/0/0
4	SO4	C	105	-	-	0/0/0/0	0/0/0/0
4	SO4	C	106	-	-	0/0/0/0	0/0/0/0
4	SO4	C	107	-	-	0/0/0/0	0/0/0/0
5	CIT	C	108	-	-	0/6/16/16	0/0/0/0
4	SO4	D	101	-	-	0/0/0/0	0/0/0/0
4	SO4	D	102	-	-	0/0/0/0	0/0/0/0
4	SO4	D	103	-	-	0/0/0/0	0/0/0/0
4	SO4	D	104	-	-	0/0/0/0	0/0/0/0
4	SO4	D	105	-	-	0/0/0/0	0/0/0/0
5	CIT	D	106	-	-	0/6/16/16	0/0/0/0

All (4) bond length outliers are listed below:

Mol	Chain	Res	Type	Atoms	Z	Observed(Å)	Ideal(Å)
3	A	101	NAG	C3-C2	2.17	1.57	1.52
3	B	101	NAG	C3-C2	2.18	1.57	1.52
3	B	101	NAG	C1-C2	3.82	1.57	1.52
3	A	101	NAG	C1-C2	4.08	1.58	1.52

All (8) bond angle outliers are listed below:

Mol	Chain	Res	Type	Atoms	Z	Observed($^{\circ}$)	Ideal($^{\circ}$)
3	B	101	NAG	C8-C7-N2	-2.47	111.37	116.11
5	C	108	CIT	C3-C2-C1	-2.39	111.13	114.96
5	D	106	CIT	C3-C4-C5	-2.26	111.35	114.96
3	A	101	NAG	C8-C7-N2	-2.19	111.92	116.11
3	B	101	NAG	C2-N2-C7	2.43	126.16	123.04
3	B	101	NAG	C4-C3-C2	2.62	115.30	111.23
3	A	101	NAG	C4-C3-C2	2.74	115.48	111.23
3	A	101	NAG	C2-N2-C7	2.75	126.57	123.04

There are no chirality outliers.

There are no torsion outliers.

There are no ring outliers.

No monomer is involved in short contacts.

5.7 Other polymers [i](#)

There are no such residues in this entry.

5.8 Polymer linkage issues [i](#)

There are no chain breaks in this entry.

6 Fit of model and data [i](#)

6.1 Protein, DNA and RNA chains [i](#)

In the following table, the column labelled ‘#RSRZ> 2’ contains the number (and percentage) of RSRZ outliers, followed by percent RSRZ outliers for the chain as percentile scores relative to all X-ray entries and entries of similar resolution. The OWAB column contains the minimum, median, 95th percentile and maximum values of the occupancy-weighted average B-factor per residue. The column labelled ‘Q< 0.9’ lists the number of (and percentage) of residues with an average occupancy less than 0.9.

Mol	Chain	Analysed	<RSRZ>	#RSRZ>2		OWAB(Å ²)	Q<0.9
1	A	73/74 (98%)	0.54	5 (6%)	20 28	34, 60, 116, 152	0
1	B	73/74 (98%)	0.54	4 (5%)	29 37	34, 59, 121, 157	0
2	C	3/74 (4%)	0.83	1 (33%)	0 1	48, 48, 67, 94	0
2	D	3/74 (4%)	1.07	1 (33%)	0 1	51, 51, 64, 100	0
All	All	152/296 (51%)	0.56	11 (7%)	18 25	34, 61, 119, 157	0

All (11) RSRZ outliers are listed below:

Mol	Chain	Res	Type	RSRZ
1	B	1	SER	6.4
1	A	2	LYS	4.7
1	B	2	LYS	4.7
1	A	47	GLY	4.3
1	A	1	SER	3.7
1	B	64	LYS	3.4
1	A	46	ARG	3.3
1	B	3	SER	2.4
2	D	47	GLY	2.4
2	C	47	GLY	2.3
1	A	4	MET	2.3

6.2 Non-standard residues in protein, DNA, RNA chains [i](#)

In the following table, the Atoms column lists the number of modelled atoms in the group and the number defined in the chemical component dictionary. LLDF column lists the quality of electron density of the group with respect to its neighbouring residues in protein, DNA or RNA chains. The B-factors column lists the minimum, median, 95th percentile and maximum values of B factors of atoms in the group. The column labelled ‘Q< 0.9’ lists the number of atoms with occupancy less than 0.9.

Mol	Type	Chain	Res	Atoms	RSCC	RSR	LLDF	B-factors(\AA^2)	Q<0.9
2	DPN	D	13	11/12	0.95	0.11	-	35,39,42,42	0
2	DIL	C	41	8/9	0.97	0.12	-	34,35,44,44	0
2	DAL	D	52	5/6	0.98	0.15	-	34,34,36,37	0
2	DTH	D	55	7/8	0.94	0.10	-	53,58,62,68	0
2	DSG	C	37	8/9	0.92	0.12	-	56,57,61,62	0
2	DLE	D	44	8/9	0.91	0.19	-	64,68,83,84	0
2	DGN	C	5	9/10	0.74	0.37	-	81,86,90,97	0
2	DAR	C	61	11/12	0.92	0.12	-	61,67,71,71	0
2	DSN	C	14	6/7	0.93	0.13	-	38,41,43,46	0
2	DTR	C	58	14/15	0.96	0.15	-	35,44,59,59	0
2	DSN	D	33	6/7	0.94	0.12	-	50,54,62,68	0
2	DGL	D	17	9/10	0.90	0.11	-	48,58,67,68	0
2	DPN	C	42	11/12	0.95	0.12	-	43,47,49,51	0
2	DAL	C	52	5/6	0.98	0.11	-	33,36,39,39	0
2	DCY	D	12	6/7	0.94	0.10	-	33,36,37,39	0
2	DIL	D	34	8/9	0.96	0.18	-	40,46,52,56	0
2	DAL	C	16	5/6	0.96	0.11	-	45,48,50,53	0
2	DLE	C	40	8/9	0.97	0.16	-	38,40,41,45	0
2	DAR	D	61	11/12	0.94	0.11	-	61,69,72,73	0
2	DTH	C	31	7/8	0.96	0.12	-	44,46,49,51	0
2	DSN	C	3	6/7	0.46	0.68	-	126,130,134,137	0
2	DTH	C	55	7/8	0.97	0.06	-	55,59,64,68	0
2	DLE	D	66	8/9	0.95	0.10	-	48,56,64,64	0
2	DTH	D	31	7/8	0.98	0.09	-	37,39,44,45	0
2	DLY	D	48	9/10	0.77	0.20	-	80,89,99,101	0
2	DAR	D	10	11/12	0.90	0.21	-	34,38,55,57	0
2	DLY	D	45	9/10	0.82	0.37	-	89,107,116,124	0
2	DCY	C	12	6/7	0.95	0.12	-	31,34,39,41	0
2	DPR	D	21	7/8	0.92	0.18	-	71,75,81,85	0
2	DGN	D	18	9/10	0.93	0.12	-	58,64,89,91	0
2	DLY	C	43	9/10	0.93	0.18	-	50,59,67,70	0
2	DGL	D	38	9/10	0.89	0.15	-	57,58,73,78	0
2	DHI	D	68	10/11	0.86	0.22	-	56,61,68,69	0
2	DIL	C	34	8/9	0.96	0.13	-	38,44,48,50	0
2	DVA	D	56	7/8	0.98	0.11	-	43,46,60,61	0
2	DLY	C	48	9/10	0.75	0.23	-	80,86,95,96	0
2	DAR	C	23	11/12	0.90	0.20	-	79,87,92,93	0
2	DLY	D	43	9/10	0.91	0.23	-	54,64,74,76	0
2	DAR	C	10	11/12	0.90	0.20	-	31,36,55,57	0
2	DAL	C	50	5/6	0.96	0.12	-	49,50,52,54	0
2	DPR	D	7	7/8	0.97	0.13	-	49,50,56,56	0
2	DSN	D	71	6/7	0.95	0.10	-	63,66,73,76	0
2	DPN	C	8	11/12	0.94	0.15	-	40,41,47,47	0

Continued on next page...

Continued from previous page...

Mol	Type	Chain	Res	Atoms	RSCC	RSR	LLDF	B-factors(\AA^2)	Q<0.9
2	DAR	D	29	11/12	0.92	0.13	-	42,47,64,65	0
2	DCY	D	35	6/7	0.95	0.10	-	39,46,50,53	0
2	MED	C	4	8/9	0.62	0.28	-	80,107,117,156	0
2	DPR	C	7	7/8	0.96	0.13	-	48,52,59,59	0
2	DAS	C	54	8/9	0.96	0.12	-	48,62,151,153	0
2	DTY	C	28	12/13	0.92	0.16	-	45,50,59,66	0
2	DHI	D	62	10/11	0.98	0.10	-	57,62,65,69	0
2	DAR	D	46	11/12	0.76	0.25	-	108,119,134,134	0
2	DCY	D	11	6/7	0.96	0.11	-	33,35,37,41	0
2	DPN	D	42	11/12	0.96	0.13	-	44,45,53,54	0
2	DIL	D	25	8/9	0.96	0.12	-	47,51,60,61	0
2	DPN	C	13	11/12	0.96	0.11	-	35,37,42,43	0
2	DAR	C	73	11/12	0.80	0.16	-	82,110,116,116	0
2	DPN	D	15	11/12	0.95	0.14	-	38,39,42,43	0
2	MED	C	65	8/9	0.88	0.31	-	67,69,92,99	0
2	DGL	C	17	9/10	0.93	0.10	-	53,65,74,75	0
2	DAR	C	46	11/12	0.75	0.32	-	100,112,133,140	0
2	MED	D	4	8/9	0.74	0.24	-	86,100,126,160	0
2	DPN	C	15	11/12	0.95	0.14	-	37,39,47,48	0
2	DLY	C	45	9/10	0.90	0.36	-	82,99,107,115	0
2	DAR	C	29	11/12	0.93	0.11	-	44,50,66,67	0
2	DGL	C	38	9/10	0.79	0.18	-	59,61,79,83	0
2	DLE	D	26	8/9	0.96	0.14	-	58,62,69,72	0
2	DLE	C	53	8/9	0.97	0.18	-	38,44,49,49	0
2	DAL	D	50	5/6	0.97	0.12	-	47,48,53,56	0
2	DTY	D	28	12/13	0.93	0.14	-	45,49,59,65	0
2	DPR	C	21	7/8	0.90	0.14	-	67,72,77,80	0
2	DGN	D	60	9/10	0.90	0.20	-	53,62,66,71	0
2	DVA	D	6	7/8	0.94	0.13	-	61,65,70,71	0
2	DPR	C	70	7/8	0.93	0.24	-	60,62,67,71	0
2	DLY	D	64	9/10	0.87	0.24	-	69,82,90,97	0
2	DAR	D	23	11/12	0.88	0.19	-	81,93,99,99	0
2	DSN	C	71	6/7	0.90	0.15	-	68,69,76,81	0
2	DGN	C	18	9/10	0.91	0.13	-	62,66,92,92	0
2	DLE	C	26	8/9	0.94	0.16	-	55,61,64,66	0
2	DGN	D	5	9/10	0.65	0.39	-	77,81,85,90	0
2	DSN	D	14	6/7	0.95	0.16	-	37,42,44,48	0
2	DAL	D	24	5/6	0.98	0.07	-	70,70,73,76	0
2	DIL	D	20	8/9	0.96	0.09	-	44,54,66,68	0
2	DHI	C	62	10/11	0.98	0.10	-	54,59,64,67	0
2	DLE	D	53	8/9	0.96	0.16	-	35,38,46,46	0
2	DIL	D	41	8/9	0.97	0.13	-	35,38,46,46	0

Continued on next page...

Continued from previous page...

Mol	Type	Chain	Res	Atoms	RSCC	RSR	LLDF	B-factors(\AA^2)	Q<0.9
2	MED	D	65	8/9	0.92	0.29	-	71,72,99,109	0
2	DVA	C	6	7/8	0.90	0.17	-	65,70,74,76	0
2	DSG	D	37	8/9	0.90	0.13	-	53,54,58,59	0
2	DSG	D	30	8/9	0.94	0.11	-	41,45,55,55	0
2	DPN	D	8	11/12	0.90	0.18	-	39,42,46,47	0
2	DLE	C	44	8/9	0.94	0.18	-	60,65,77,78	0
2	DHI	C	68	10/11	0.92	0.16	-	56,63,71,71	0
2	DCY	D	27	6/7	0.82	0.12	-	51,54,57,58	0
2	DSN	C	32	6/7	0.96	0.13	-	39,40,40,44	0
2	DSG	C	30	8/9	0.96	0.11	-	43,47,57,59	0
2	DSN	C	36	6/7	0.94	0.15	-	55,62,64,66	0
2	DGL	D	49	9/10	0.84	0.18	-	64,68,73,76	0
2	DSN	C	33	6/7	0.96	0.10	-	44,47,56,62	0
2	DTR	D	58	14/15	0.97	0.14	-	37,43,57,57	0
2	DVA	C	59	7/8	0.98	0.19	-	43,47,54,56	0
2	DLY	C	64	9/10	0.91	0.23	-	67,78,86,93	0
2	DLE	C	66	8/9	0.96	0.09	-	44,51,62,64	0
2	DSN	D	36	6/7	0.96	0.10	-	54,59,60,61	0
2	DAS	D	54	8/9	0.96	0.18	-	46,60,143,201	0
2	DSN	C	9	6/7	0.98	0.13	-	32,34,35,35	0
2	DIL	C	25	8/9	0.96	0.10	-	43,49,60,62	0
2	DLE	D	40	8/9	0.97	0.16	-	42,43,45,46	0
2	DSN	D	9	6/7	0.97	0.14	-	33,35,36,37	0
2	DCY	D	69	6/7	0.75	0.22	-	54,57,61,62	0
2	DAL	D	16	5/6	0.97	0.09	-	40,42,46,48	0
2	DSN	D	32	6/7	0.97	0.07	-	40,42,45,48	0
2	DCY	C	11	6/7	0.93	0.10	-	31,33,34,36	0
2	DCY	C	35	6/7	0.97	0.09	-	35,44,49,52	0
2	DLE	C	22	8/9	0.94	0.16	-	66,73,75,78	0
2	DCY	D	51	6/7	0.95	0.11	-	39,40,41,43	0
2	DLY	C	72	9/10	0.95	0.12	-	73,80,89,94	0
2	DIL	C	20	8/9	0.94	0.10	-	40,51,64,65	0
2	DVA	C	56	7/8	0.97	0.14	-	49,52,61,62	0
2	DCY	C	69	6/7	0.82	0.24	-	55,58,62,63	0
2	DCY	C	51	6/7	0.95	0.12	-	39,40,41,44	0
2	DCY	C	27	6/7	0.91	0.13	-	48,51,55,55	0
2	DPR	D	70	7/8	0.95	0.24	-	62,63,70,74	0
2	DVA	D	59	7/8	0.98	0.17	-	38,41,51,53	0
2	DSN	D	3	6/7	0.84	0.39	-	117,119,122,125	0
2	DAR	D	73	11/12	0.87	0.16	-	75,91,96,108	0
2	DAR	C	67	11/12	0.92	0.12	-	54,66,92,99	0
2	DGN	C	60	9/10	0.91	0.18	-	57,64,70,74	0

Continued on next page...

Continued from previous page...

Mol	Type	Chain	Res	Atoms	RSCC	RSR	LLDF	B-factors(\AA^2)	Q<0.9
2	DGL	C	49	9/10	0.84	0.20	-	64,68,74,76	0
2	DLE	D	22	8/9	0.97	0.11	-	66,74,75,78	0
2	DLY	D	72	9/10	0.93	0.11	-	69,74,83,92	0
2	DGL	C	19	9/10	0.93	0.12	-	61,64,72,74	0
2	DAL	C	24	5/6	0.93	0.11	-	68,69,70,72	0
2	DAR	C	63	11/12	0.87	0.18	-	58,61,69,71	0
2	DAR	D	63	11/12	0.86	0.19	-	59,64,70,76	0
2	DGL	D	19	9/10	0.95	0.09	-	59,64,70,71	0
2	DAR	D	67	11/12	0.94	0.13	-	56,67,93,100	0

6.3 Carbohydrates [i](#)

There are no carbohydrates in this entry.

6.4 Ligands [i](#)

In the following table, the Atoms column lists the number of modelled atoms in the group and the number defined in the chemical component dictionary. LLDF column lists the quality of electron density of the group with respect to its neighbouring residues in protein, DNA or RNA chains. The B-factors column lists the minimum, median, 95th percentile and maximum values of B factors of atoms in the group. The column labelled 'Q< 0.9' lists the number of atoms with occupancy less than 0.9.

Mol	Type	Chain	Res	Atoms	RSCC	RSR	LLDF	B-factors(\AA^2)	Q<0.9
4	SO4	A	105	5/5	0.94	0.15	-	105,109,110,110	0
4	SO4	D	105	5/5	0.88	0.20	-	105,110,110,111	0
4	SO4	D	102	5/5	0.89	0.19	-	93,97,98,99	0
4	SO4	A	106	5/5	0.94	0.12	-	78,81,83,83	0
4	SO4	A	102	5/5	0.96	0.11	-	108,113,113,114	0
4	SO4	D	104	5/5	0.89	0.11	-	98,102,103,104	0
4	SO4	B	106	5/5	0.95	0.09	-	90,94,95,96	0
4	SO4	C	101	5/5	0.98	0.16	-	86,90,92,92	0
4	SO4	C	105	5/5	0.77	0.27	-	131,135,136,137	0
4	SO4	B	107	5/5	0.92	0.18	-	83,87,88,89	0
4	SO4	B	103	5/5	0.95	0.10	-	106,111,112,112	0
4	SO4	B	104	5/5	0.99	0.05	-	74,79,79,80	0
3	NAG	B	101	14/15	0.77	0.37	-	104,114,124,128	0
4	SO4	B	102	5/5	0.86	0.31	-	163,167,168,168	0
4	SO4	D	101	5/5	0.96	0.10	-	85,89,90,90	0
4	SO4	B	108	5/5	0.86	0.13	-	146,151,151,152	0
4	SO4	B	105	5/5	0.95	0.12	-	100,104,105,107	0

Continued on next page...

Continued from previous page...

Mol	Type	Chain	Res	Atoms	RSCC	RSR	LLDF	B-factors(\AA^2)	Q<0.9
4	SO4	C	106	5/5	0.86	0.14	-	124,129,129,130	0
4	SO4	D	103	5/5	0.76	0.23	-	124,129,129,129	0
4	SO4	C	107	5/5	0.92	0.12	-	110,115,115,116	0
4	SO4	C	103	5/5	0.98	0.06	-	76,80,81,84	0
4	SO4	C	104	5/5	0.89	0.11	-	92,96,98,98	0
4	SO4	A	107	5/5	0.79	0.34	-	120,124,125,126	0
4	SO4	A	108	5/5	0.80	0.14	-	146,150,151,151	0
5	CIT	D	106	13/13	0.85	0.27	-	80,82,86,87	0
4	SO4	C	102	5/5	0.97	0.13	-	106,111,111,112	0
5	CIT	C	108	13/13	0.77	0.32	-	82,84,89,90	0
4	SO4	A	109	5/5	0.87	0.33	-	111,115,116,116	0
4	SO4	A	103	5/5	0.95	0.17	-	102,106,107,108	0
3	NAG	A	101	14/15	0.70	0.42	-	106,115,125,129	0
4	SO4	A	104	5/5	0.89	0.18	-	70,75,75,75	0

6.5 Other polymers [i](#)

There are no such residues in this entry.