



Full wwPDB X-ray Structure Validation Report ⓘ

Feb 1, 2016 – 07:21 PM GMT

PDB ID : 4OLB
Title : Crystal Structure of Human Argonaute2 Bound to Tryptophan
Authors : Schirle, N.T.; MacRae, I.J.
Deposited on : 2014-01-23
Resolution : 2.90 Å(reported)

This is a Full wwPDB X-ray Structure Validation Report for a publicly released PDB entry.
We welcome your comments at validation@mail.wwpdb.org
A user guide is available at
<http://wwpdb.org/validation/2016/XrayValidationReportHelp>
with specific help available everywhere you see the ⓘ symbol.

The following versions of software and data (see [references ⓘ](#)) were used in the production of this report:

MolProbity : 4.02b-467
Mogul : 1.7 (RC4), CSD as536be (2015)
Xtriage (Phenix) : 1.9-1692
EDS : rb-20026688
Percentile statistics : 20151230.v01 (using entries in the PDB archive December 30th 2015)
Refmac : 5.8.0135
CCP4 : 6.5.0
Ideal geometry (proteins) : Engh & Huber (2001)
Ideal geometry (DNA, RNA) : Parkinson et al. (1996)
Validation Pipeline (wwPDB-VP) : trunk26865

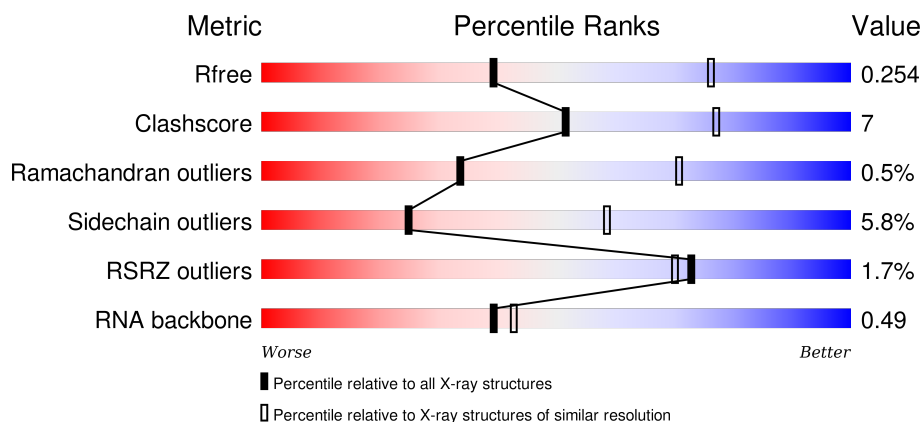
1 Overall quality at a glance

The following experimental techniques were used to determine the structure:

X-RAY DIFFRACTION



The reported resolution of this entry is 2.90 Å.

Percentile scores (ranging between 0-100) for global validation metrics of the entry are shown in the following graphic. The table shows the number of entries on which the scores are based.



Metric	Whole archive (#Entries)	Similar resolution (#Entries, resolution range(Å))
R_{free}	91344	1451 (2.90-2.90)
Clashscore	102246	1668 (2.90-2.90)
Ramachandran outliers	100387	1630 (2.90-2.90)
Sidechain outliers	100360	1632 (2.90-2.90)
RSRZ outliers	91569	1456 (2.90-2.90)
RNA backbone	2183	1093 (3.30-2.50)

The table below summarises the geometric issues observed across the polymeric chains and their fit to the electron density. The red, orange, yellow and green segments on the lower bar indicate the fraction of residues that contain outliers for ≥ 3 , 2, 1 and 0 types of geometric quality criteria. A grey segment represents the fraction of residues that are not modelled. The numeric value for each fraction is indicated below the corresponding segment, with a dot representing fractions $\leq 5\%$. The upper red bar (where present) indicates the fraction of residues that have poor fit to the electron density. The numeric value is given above the bar.

Mol	Chain	Length	Quality of chain
1	A	859	
2	B	10	

The following table lists non-polymeric compounds, carbohydrate monomers and non-standard residues in protein, DNA, RNA chains that are outliers for geometric or electron-density-fit criteria:

Mol	Type	Chain	Res	Chirality	Geometry	Clashes	Electron density
3	TRP	A	901	-	-	-	X

2 Entry composition [i](#)

There are 4 unique types of molecules in this entry. The entry contains 6606 atoms, of which 0 are hydrogens and 0 are deuteriums.

In the tables below, the ZeroOcc column contains the number of atoms modelled with zero occupancy, the AltConf column contains the number of residues with at least one atom in alternate conformation and the Trace column contains the number of residues modelled with at most 2 atoms.

- Molecule 1 is a protein called Protein argonaute-2.

Mol	Chain	Residues	Atoms					ZeroOcc	AltConf	Trace
1	A	794	Total	C	N	O	S	0	0	0
			6380	4066	1149	1126	39			

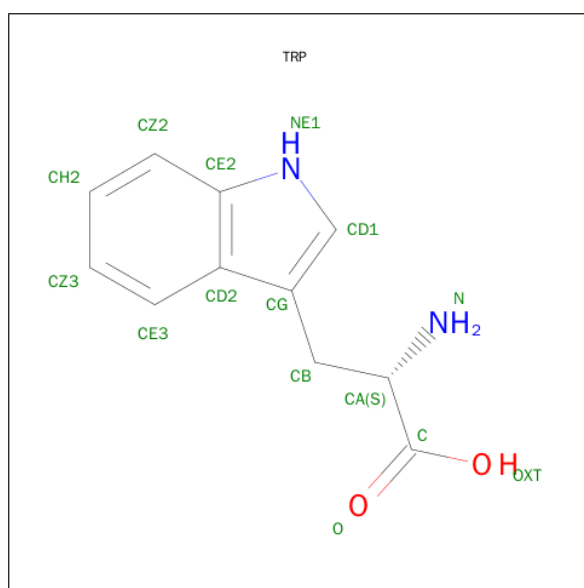
There is a discrepancy between the modelled and reference sequences:

Chain	Residue	Modelled	Actual	Comment	Reference
A	387	ASP	SER	ENGINEERED MUTATION	UNP Q9UKV8

- Molecule 2 is a RNA chain called 5'-R(P*AP*AP*AP*AP*AP*AP*AP*AP*U)-3'.

Mol	Chain	Residues	Atoms					ZeroOcc	AltConf	Trace
2	B	10	Total	C	N	O	P	0	0	0
			191	84	37	60	10			

- Molecule 3 is TRYPTOPHAN (three-letter code: TRP) (formula: C₁₁H₁₂N₂O₂).



Mol	Chain	Residues	Atoms				ZeroOcc	AltConf
3	A	1	Total	C	N	O	0	0
			14	11	2	1		
3	A	1	Total	C	N	O	0	0
			14	11	2	1		

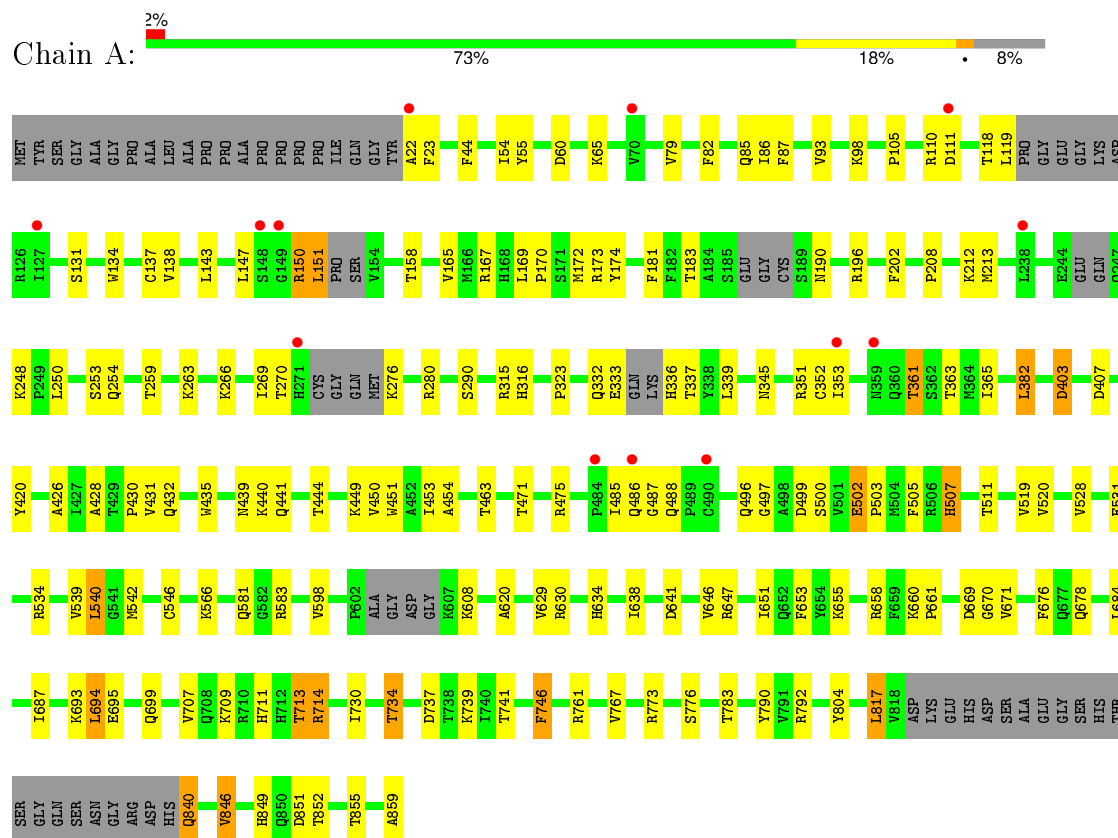
- Molecule 4 is water.

Mol	Chain	Residues	Atoms		ZeroOcc	AltConf
4	A	7	Total	O	0	0
			7	7		

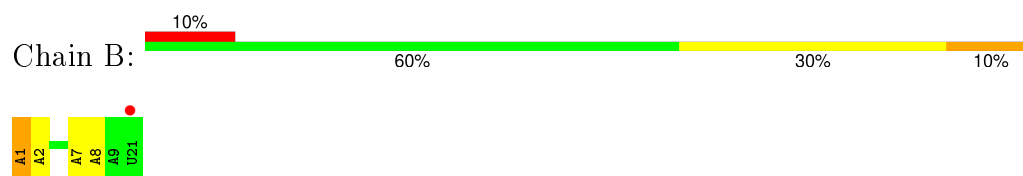
3 Residue-property plots [i](#)

These plots are drawn for all protein, RNA and DNA chains in the entry. The first graphic for a chain summarises the proportions of errors displayed in the second graphic. The second graphic shows the sequence view annotated by issues in geometry and electron density. Residues are color-coded according to the number of geometric quality criteria for which they contain at least one outlier: green = 0, yellow = 1, orange = 2 and red = 3 or more. A red dot above a residue indicates a poor fit to the electron density ($RSRZ > 2$). Stretches of 2 or more consecutive residues without any outlier are shown as a green connector. Residues present in the sample, but not in the model, are shown in grey.

• Molecule 1: Protein argonaute-2



• Molecule 2: 5'-R(P*AP*AP*AP*AP*AP*AP*AP*AP*AP*U)-3'



4 Data and refinement statistics

Property	Value	Source
Space group	P 1 21 1	Depositor
Cell constants a, b, c, α , β , γ	63.21Å 106.75Å 68.34Å 90.00° 107.01° 90.00°	Depositor
Resolution (Å)	39.05 – 2.90 39.04 – 2.90	Depositor EDS
% Data completeness (in resolution range)	97.6 (39.05-2.90) 97.6 (39.04-2.90)	Depositor EDS
R_{merge}	0.06	Depositor
R_{sym}	(Not available)	Depositor
$\langle I/\sigma(I) \rangle$ ¹	2.80 (at 2.90Å)	Xtriage
Refinement program	PHENIX (phenix.refine: 1.8.2_1309)	Depositor
R, R_{free}	0.210 , 0.249 0.221 , 0.254	Depositor DCC
R_{free} test set	955 reflections (5.33%)	DCC
Wilson B-factor (Å ²)	55.3	Xtriage
Anisotropy	0.352	Xtriage
Bulk solvent k_{sol} (e/Å ³), B_{sol} (Å ²)	0.33 , 39.4	EDS
Estimated twinning fraction	No twinning to report.	Xtriage
L-test for twinning ²	$\langle L \rangle = 0.49$, $\langle L^2 \rangle = 0.32$	Xtriage
Outliers	0 of 18866 reflections	Xtriage
F_o, F_c correlation	0.92	EDS
Total number of atoms	6606	wwPDB-VP
Average B, all atoms (Å ²)	55.0	wwPDB-VP

Xtriage's analysis on translational NCS is as follows: *The largest off-origin peak in the Patterson function is 4.80% of the height of the origin peak. No significant pseudotranslation is detected.*

¹Intensities estimated from amplitudes.

²Theoretical values of $\langle |L| \rangle$, $\langle L^2 \rangle$ for acentric reflections are 0.5, 0.375 respectively for untwinned datasets, and 0.333, 0.2 for perfectly twinned datasets.

5 Model quality [i](#)

5.1 Standard geometry [i](#)

The Z score for a bond length (or angle) is the number of standard deviations the observed value is removed from the expected value. A bond length (or angle) with $|Z| > 5$ is considered an outlier worth inspection. RMSZ is the root-mean-square of all Z scores of the bond lengths (or angles).

Mol	Chain	Bond lengths		Bond angles	
		RMSZ	$\# Z > 5$	RMSZ	$\# Z > 5$
1	A	0.24	0/6526	0.45	1/8826 (0.0%)
2	B	0.75	1/213 (0.5%)	0.68	0/326
All	All	0.27	1/6739 (0.0%)	0.46	1/9152 (0.0%)

All (1) bond length outliers are listed below:

Mol	Chain	Res	Type	Atoms	Z	Observed(Å)	Ideal(Å)
2	B	1	A	OP3-P	-10.71	1.48	1.61

All (1) bond angle outliers are listed below:

Mol	Chain	Res	Type	Atoms	Z	Observed(°)	Ideal(°)
1	A	280	ARG	NE-CZ-NH2	-7.21	116.70	120.30

There are no chirality outliers.

There are no planarity outliers.

5.2 Too-close contacts [i](#)

In the following table, the Non-H and H(model) columns list the number of non-hydrogen atoms and hydrogen atoms in the chain respectively. The H(added) column lists the number of hydrogen atoms added and optimized by MolProbity. The Clashes column lists the number of clashes within the asymmetric unit, whereas Symm-Clashes lists symmetry related clashes.

Mol	Chain	Non-H	H(model)	H(added)	Clashes	Symm-Clashes
1	A	6380	0	6455	88	1
2	B	191	0	94	3	0
3	A	28	0	18	0	0
4	A	7	0	0	1	0
All	All	6606	0	6567	89	1

The all-atom clashscore is defined as the number of clashes found per 1000 atoms (including hydrogen atoms). The all-atom clashscore for this structure is 7.

All (89) close contacts within the same asymmetric unit are listed below, sorted by their clash magnitude.

Atom-1	Atom-2	Interatomic distance (Å)	Clash overlap (Å)
1:A:646:VAL:HG21	1:A:687:ILE:HG22	1.57	0.86
1:A:150:ARG:HA	1:A:151:LEU:HB2	1.59	0.83
1:A:709:LYS:HE2	1:A:761:ARG:HB2	1.71	0.73
1:A:196:ARG:NH1	1:A:352:CYS:SG	2.62	0.71
1:A:505:PHE:HB3	1:A:542:MET:HE1	1.74	0.69
1:A:333:GLU:N	1:A:333:GLU:OE1	2.27	0.68
1:A:638:ILE:HD11	1:A:678:GLN:HG3	1.75	0.66
1:A:660:LYS:NZ	1:A:695:GLU:OE1	2.30	0.64
1:A:630:ARG:NH1	1:A:641:ASP:OD2	2.31	0.64
1:A:502:GLU:HG3	1:A:503:PRO:HD3	1.80	0.64
1:A:82:PHE:HB3	1:A:86:ILE:HD13	1.82	0.62
1:A:475:ARG:NH2	1:A:488:GLN:OE1	2.34	0.60
1:A:566:LYS:NZ	2:B:1:A:OP3	2.30	0.60
1:A:270:THR:HG22	1:A:345:ASN:HD21	1.68	0.59
1:A:143:LEU:HB2	1:A:158:THR:HG21	1.84	0.58
1:A:403:ASP:OD1	1:A:403:ASP:N	2.37	0.58
1:A:315:ARG:HG3	1:A:316:HIS:CD2	2.40	0.57
1:A:333:GLU:O	1:A:336:HIS:N	2.39	0.56
1:A:173:ARG:NH2	1:A:174:TYR:OH	2.40	0.55
1:A:496:GLN:OE1	1:A:497:GLY:N	2.40	0.55
1:A:714:ARG:NH2	1:A:761:ARG:HG2	2.22	0.54
1:A:361:THR:O	1:A:365:ILE:HG12	2.08	0.54
1:A:454:ALA:HB3	1:A:520:VAL:HG22	1.91	0.53
1:A:840:GLN:HE21	1:A:840:GLN:N	2.06	0.53
1:A:22:ALA:HA	1:A:684:LEU:HD23	1.91	0.52
1:A:426:ALA:HB3	1:A:440:LYS:HG2	1.90	0.52
1:A:647:ARG:HD2	1:A:693:LYS:HG2	1.92	0.52
1:A:259:THR:O	1:A:263:LYS:HB2	2.10	0.52
1:A:449:LYS:HG3	1:A:450:VAL:HG23	1.92	0.52
1:A:711:HIS:O	4:A:1005:HOH:O	2.19	0.52
1:A:669:ASP:OD1	1:A:670:GLY:N	2.43	0.51
1:A:202:PHE:HB3	1:A:382:LEU:HD11	1.91	0.51
1:A:167:ARG:HB2	1:A:181:PHE:HZ	1.75	0.51
1:A:431:VAL:HG12	1:A:432:GLN:HG2	1.93	0.50
1:A:134:TRP:HZ2	1:A:137:CYS:SG	2.34	0.50
1:A:608:LYS:O	1:A:634:HIS:ND1	2.31	0.50
1:A:583:ARG:NH1	1:A:620:ALA:O	2.45	0.50

Continued on next page...

Continued from previous page...

Atom-1	Atom-2	Interatomic distance (Å)	Clash overlap (Å)
1:A:453:ILE:HD13	1:A:519:VAL:HB	1.93	0.50
2:B:7:A:H2'	2:B:8:A:O4'	2.12	0.50
1:A:539:VAL:HG12	1:A:540:LEU:HD13	1.93	0.49
1:A:451:TRP:HH2	1:A:471:THR:HG23	1.78	0.49
1:A:85:GLN:HB2	1:A:86:ILE:HD12	1.95	0.48
1:A:737:ASP:HA	1:A:741:THR:HG21	1.96	0.48
1:A:407:ASP:O	1:A:739:LYS:HE2	2.14	0.48
1:A:332:GLN:OE1	1:A:332:GLN:N	2.46	0.48
1:A:428:ALA:HB2	1:A:440:LYS:HE2	1.95	0.48
1:A:852:THR:O	1:A:855:THR:OG1	2.24	0.48
1:A:111:ASP:N	1:A:111:ASP:OD1	2.40	0.47
1:A:44:PHE:CE1	1:A:713:THR:HB	2.50	0.47
1:A:54:ILE:HB	1:A:138:VAL:HB	1.96	0.47
1:A:269:ILE:HD11	1:A:339:LEU:HD13	1.95	0.47
1:A:730:ILE:HB	1:A:734:THR:HG21	1.98	0.46
1:A:44:PHE:HE1	1:A:713:THR:HB	1.81	0.46
1:A:270:THR:HG22	1:A:345:ASN:ND2	2.31	0.45
1:A:746:PHE:HB3	1:A:767:VAL:HB	1.99	0.45
1:A:714:ARG:HH22	1:A:761:ARG:HG2	1.82	0.44
1:A:790:TYR:CE2	1:A:792:ARG:HB2	2.52	0.44
1:A:208:PRO:HB3	1:A:213:MET:HE1	1.99	0.44
1:A:444:THR:OG1	1:A:444:THR:O	2.36	0.44
1:A:531:GLU:OE2	1:A:534:ARG:NH1	2.51	0.43
1:A:849:HIS:CE1	1:A:851:ASP:HB2	2.53	0.43
1:A:651:ILE:HG22	1:A:655:LYS:HD2	2.01	0.43
1:A:451:TRP:HZ3	1:A:453:ILE:HD11	1.84	0.43
1:A:250:LEU:HB3	1:A:254:GLN:HB2	2.01	0.43
1:A:420:TYR:HB3	1:A:441:GLN:O	2.18	0.43
1:A:507:HIS:CE1	1:A:511:THR:HG21	2.54	0.43
1:A:817:LEU:HA	1:A:817:LEU:HD12	1.87	0.43
1:A:566:LYS:HE3	1:A:859:ALA:OXT	2.19	0.42
1:A:430:PRO:HG3	1:A:435:TRP:CE3	2.54	0.42
1:A:290:SER:HB3	1:A:323:PRO:HB2	2.01	0.42
1:A:694:LEU:HA	1:A:694:LEU:HD12	1.86	0.42
1:A:581:GLN:N	1:A:581:GLN:OE1	2.48	0.42
1:A:212:LYS:HB3	1:A:212:LYS:HE2	1.89	0.42
1:A:475:ARG:HG3	1:A:485:ILE:O	2.18	0.42
1:A:653:PHE:CD1	1:A:661:PRO:HD3	2.55	0.42
1:A:497:GLY:O	1:A:500:SER:OG	2.37	0.41
1:A:79:VAL:HA	1:A:87:PHE:CD2	2.55	0.41
1:A:55:TYR:CE2	1:A:105:PRO:HD3	2.56	0.41

Continued on next page...

Continued from previous page...

Atom-1	Atom-2	Interatomic distance (Å)	Clash overlap (Å)
1:A:671:VAL:HG12	1:A:676:PHE:CE1	2.56	0.41
1:A:540:LEU:HD12	1:A:540:LEU:HA	1.90	0.41
1:A:629:VAL:HG13	1:A:846:VAL:HG13	2.01	0.41
1:A:546:CYS:HB2	2:B:1:A:O5'	2.21	0.41
1:A:739:LYS:HE3	1:A:739:LYS:HB3	1.90	0.41
1:A:849:HIS:HB3	1:A:852:THR:HG23	2.02	0.41
1:A:60:ASP:HB2	1:A:131:SER:OG	2.21	0.41
1:A:147:LEU:HD11	1:A:213:MET:HG2	2.02	0.40
1:A:93:VAL:HG11	1:A:165:VAL:HA	2.03	0.40
1:A:169:LEU:HB3	1:A:170:PRO:HD3	2.03	0.40
1:A:486:GLN:H	1:A:486:GLN:HG2	1.71	0.40

All (1) symmetry-related close contacts are listed below. The label for Atom-2 includes the symmetry operator and encoded unit-cell translations to be applied.

Atom-1	Atom-2	Interatomic distance (Å)	Clash overlap (Å)
1:A:65:LYS:NZ	1:A:851:ASP:OD1[2_546]	2.04	0.16

5.3 Torsion angles ⓘ

5.3.1 Protein backbone ⓘ

In the following table, the Percentiles column shows the percent Ramachandran outliers of the chain as a percentile score with respect to all X-ray entries followed by that with respect to entries of similar resolution.

The Analysed column shows the number of residues for which the backbone conformation was analysed, and the total number of residues.

Mol	Chain	Analysed	Favoured	Allowed	Outliers	Percentiles
1	A	776/859 (90%)	743 (96%)	29 (4%)	4 (0%)	34 71

All (4) Ramachandran outliers are listed below:

Mol	Chain	Res	Type
1	A	150	ARG
1	A	439	ASN
1	A	110	ARG
1	A	487	GLY

5.3.2 Protein sidechains ⓘ

In the following table, the Percentiles column shows the percent sidechain outliers of the chain as a percentile score with respect to all X-ray entries followed by that with respect to entries of similar resolution.

The Analysed column shows the number of residues for which the sidechain conformation was analysed, and the total number of residues.

Mol	Chain	Analysed	Rotameric	Outliers	Percentiles
1	A	705/752 (94%)	664 (94%)	41 (6%)	25 58

All (41) residues with a non-rotameric sidechain are listed below:

Mol	Chain	Res	Type
1	A	23	PHE
1	A	98	LYS
1	A	118	THR
1	A	119	LEU
1	A	151	LEU
1	A	172	MET
1	A	183	THR
1	A	190	ASN
1	A	248	LYS
1	A	253	SER
1	A	266	LYS
1	A	276	LYS
1	A	337	THR
1	A	351	ARG
1	A	353	ILE
1	A	361	THR
1	A	363	THR
1	A	382	LEU
1	A	403	ASP
1	A	463	THR
1	A	499	ASP
1	A	502	GLU
1	A	507	HIS
1	A	528	VAL
1	A	540	LEU
1	A	598	VAL
1	A	658	ARG
1	A	694	LEU
1	A	699	GLN
1	A	707	VAL

Continued on next page...

Continued from previous page...

Mol	Chain	Res	Type
1	A	713	THR
1	A	714	ARG
1	A	734	THR
1	A	746	PHE
1	A	773	ARG
1	A	776	SER
1	A	783	THR
1	A	804	TYR
1	A	817	LEU
1	A	840	GLN
1	A	846	VAL

Some sidechains can be flipped to improve hydrogen bonding and reduce clashes. All (5) such sidechains are listed below:

Mol	Chain	Res	Type
1	A	316	HIS
1	A	345	ASN
1	A	548	GLN
1	A	678	GLN
1	A	847	GLN

5.3.3 RNA ⓘ

Mol	Chain	Analysed	Backbone Outliers	Pucker Outliers
2	B	7/10 (70%)	1 (14%)	0

All (1) RNA backbone outliers are listed below:

Mol	Chain	Res	Type
2	B	2	A

There are no RNA pucker outliers to report.

5.4 Non-standard residues in protein, DNA, RNA chains ⓘ

There are no non-standard protein/DNA/RNA residues in this entry.

5.5 Carbohydrates [i](#)

There are no carbohydrates in this entry.

5.6 Ligand geometry [i](#)

2 ligands are modelled in this entry.

In the following table, the Counts columns list the number of bonds (or angles) for which Mogul statistics could be retrieved, the number of bonds (or angles) that are observed in the model and the number of bonds (or angles) that are defined in the chemical component dictionary. The Link column lists molecule types, if any, to which the group is linked. The Z score for a bond length (or angle) is the number of standard deviations the observed value is removed from the expected value. A bond length (or angle) with $|Z| > 2$ is considered an outlier worth inspection. RMSZ is the root-mean-square of all Z scores of the bond lengths (or angles).

Mol	Type	Chain	Res	Link	Bond lengths			Bond angles		
					Counts	RMSZ	$\# Z > 2$	Counts	RMSZ	$\# Z > 2$
3	TRP	A	901	-	13,15,16	0.74	0	8,20,22	1.12	0
3	TRP	A	902	-	13,15,16	0.70	0	8,20,22	1.13	0

In the following table, the Chirals column lists the number of chiral outliers, the number of chiral centers analysed, the number of these observed in the model and the number defined in the chemical component dictionary. Similar counts are reported in the Torsion and Rings columns. '-' means no outliers of that kind were identified.

Mol	Type	Chain	Res	Link	Chirals	Torsions	Rings
3	TRP	A	901	-	-	0/3/6/8	0/2/2/2
3	TRP	A	902	-	-	0/3/6/8	0/2/2/2

There are no bond length outliers.

There are no bond angle outliers.

There are no chirality outliers.

There are no torsion outliers.

There are no ring outliers.

No monomer is involved in short contacts.

5.7 Other polymers [i](#)

There are no such residues in this entry.

5.8 Polymer linkage issues

There are no chain breaks in this entry.

6 Fit of model and data [i](#)

6.1 Protein, DNA and RNA chains [i](#)

In the following table, the column labelled ‘#RSRZ> 2’ contains the number (and percentage) of RSRZ outliers, followed by percent RSRZ outliers for the chain as percentile scores relative to all X-ray entries and entries of similar resolution. The OWAB column contains the minimum, median, 95th percentile and maximum values of the occupancy-weighted average B-factor per residue. The column labelled ‘Q< 0.9’ lists the number of (and percentage) of residues with an average occupancy less than 0.9.

Mol	Chain	Analysed	<RSRZ>	#RSRZ>2	OWAB(Å ²)	Q<0.9
1	A	794/859 (92%)	0.05	13 (1%) 74 72	26, 51, 86, 113	0
2	B	10/10 (100%)	0.44	1 (10%) 9 5	46, 55, 93, 113	1 (10%)
All	All	804/869 (92%)	0.06	14 (1%) 73 70	26, 51, 86, 113	1 (0%)

All (14) RSRZ outliers are listed below:

Mol	Chain	Res	Type	RSRZ
1	A	127	ILE	4.1
1	A	484	PRO	3.6
1	A	490	CYS	3.0
1	A	70	VAL	2.9
1	A	271	HIS	2.9
1	A	22	ALA	2.8
1	A	359	ASN	2.8
1	A	149	GLY	2.8
1	A	238	LEU	2.5
2	B	21	U	2.3
1	A	111	ASP	2.1
1	A	486	GLN	2.1
1	A	353	ILE	2.0
1	A	148	SER	2.0

6.2 Non-standard residues in protein, DNA, RNA chains [i](#)

There are no non-standard protein/DNA/RNA residues in this entry.

6.3 Carbohydrates [i](#)

There are no carbohydrates in this entry.

6.4 Ligands [i](#)

In the following table, the Atoms column lists the number of modelled atoms in the group and the number defined in the chemical component dictionary. LLDF column lists the quality of electron density of the group with respect to its neighbouring residues in protein, DNA or RNA chains. The B-factors column lists the minimum, median, 95th percentile and maximum values of B factors of atoms in the group. The column labelled 'Q< 0.9' lists the number of atoms with occupancy less than 0.9.

Mol	Type	Chain	Res	Atoms	RSCC	RSR	LLDF	B-factors(\AA^2)	Q<0.9
3	TRP	A	901	14/15	0.89	0.25	3.31	61,65,67,67	0
3	TRP	A	902	14/15	0.95	0.17	-0.70	44,51,54,55	0

6.5 Other polymers [i](#)

There are no such residues in this entry.