



wwPDB X-ray Structure Validation Summary Report ⓘ

Feb 1, 2016 – 11:21 AM GMT

PDB ID : 3OMP
Title : Fragment-Based Design of novel Estrogen Receptor Ligands
Authors : Moecklinghoff, S.; van Otterlo, W.A.; Rose, R.; Fuchs, S.; Dominguez Seoane, M.; Waldmann, H.; Ottmann, C.; Brunsveld, L.
Deposited on : 2010-08-27
Resolution : 2.05 Å(reported)

This is a wwPDB X-ray Structure Validation Summary Report for a publicly released PDB entry.
We welcome your comments at validation@mail.wwpdb.org
A user guide is available at
<http://wwpdb.org/validation/2016/XrayValidationReportHelp>
with specific help available everywhere you see the ⓘ symbol.

The following versions of software and data (see [references ⓘ](#)) were used in the production of this report:

MolProbity : 4.02b-467
Mogul : 1.7 (RC4), CSD as536be (2015)
Xtriage (Phenix) : 1.9-1692
EDS : rb-20026688
Percentile statistics : 20151230.v01 (using entries in the PDB archive December 30th 2015)
Refmac : 5.8.0135
CCP4 : 6.5.0
Ideal geometry (proteins) : Engh & Huber (2001)
Ideal geometry (DNA, RNA) : Parkinson et al. (1996)
Validation Pipeline (wwPDB-VP) : trunk26865

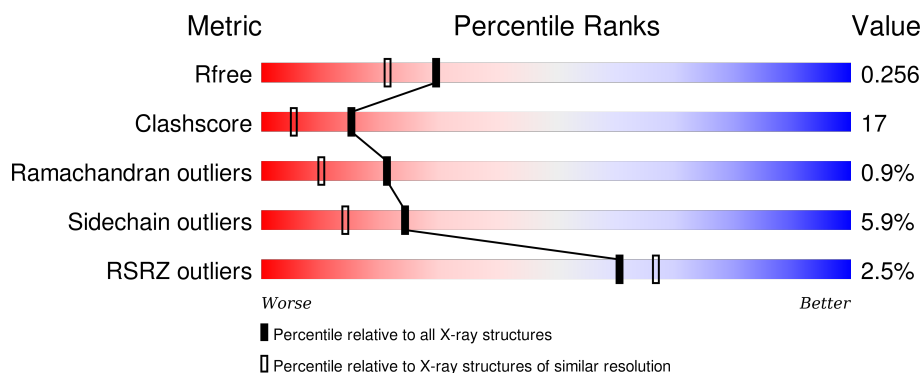
1 Overall quality at a glance

The following experimental techniques were used to determine the structure:

X-RAY DIFFRACTION

The reported resolution of this entry is 2.05 Å.

Percentile scores (ranging between 0-100) for global validation metrics of the entry are shown in the following graphic. The table shows the number of entries on which the scores are based.



Metric	Whole archive (#Entries)	Similar resolution (#Entries, resolution range(Å))
R_{free}	91344	1192 (2.04-2.04)
Clashscore	102246	1269 (2.04-2.04)
Ramachandran outliers	100387	1258 (2.04-2.04)
Sidechain outliers	100360	1258 (2.04-2.04)
RSRZ outliers	91569	1194 (2.04-2.04)

The table below summarises the geometric issues observed across the polymeric chains and their fit to the electron density. The red, orange, yellow and green segments on the lower bar indicate the fraction of residues that contain outliers for ≥ 3 , 2, 1 and 0 types of geometric quality criteria. A grey segment represents the fraction of residues that are not modelled. The numeric value for each fraction is indicated below the corresponding segment, with a dot representing fractions $\leq 5\%$. The upper red bar (where present) indicates the fraction of residues that have poor fit to the electron density. The numeric value is given above the bar.

Mol	Chain	Length	Quality of chain
1	A	240	<div> <div>3%</div> <div>70%</div> <div>23%</div> <div>• 5%</div> </div>
1	B	240	<div> <div>3%</div> <div>66%</div> <div>23%</div> <div>• 7%</div> </div>
2	C	19	<div> <div>26%</div> <div>21%</div> <div>5%</div> <div>47%</div> </div>
2	D	19	<div> <div>26%</div> <div>21%</div> <div>5%</div> <div>47%</div> </div>

2 Entry composition [i](#)

There are 4 unique types of molecules in this entry. The entry contains 4130 atoms, of which 0 are hydrogens and 0 are deuteriums.

In the tables below, the ZeroOcc column contains the number of atoms modelled with zero occupancy, the AltConf column contains the number of residues with at least one atom in alternate conformation and the Trace column contains the number of residues modelled with at most 2 atoms.

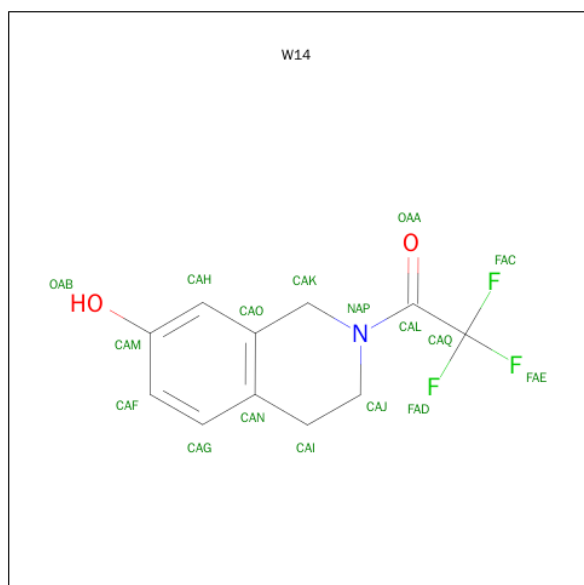
- Molecule 1 is a protein called Estrogen receptor beta.

Mol	Chain	Residues	Atoms					ZeroOcc	AltConf	Trace
1	A	229	Total	C	N	O	S	0	2	0
			1821	1171	304	326	20			
1	B	224	Total	C	N	O	S	0	0	0
			1766	1141	293	312	20			

- Molecule 2 is a protein called Nuclear receptor coactivator 1.

Mol	Chain	Residues	Atoms				ZeroOcc	AltConf	Trace
2	C	10	Total	C	N	O	0	0	0
			88	56	21	11			
2	D	10	Total	C	N	O	0	0	0
			88	56	21	11			

- Molecule 3 is 2-(TRIFLUOROACETYL)-1,2,3,4-TETRAHYDROISOQUINOLIN-7-OL (three-letter code: W14) (formula: C₁₁H₁₀F₃NO₂).

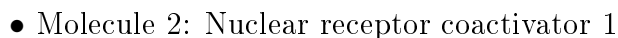
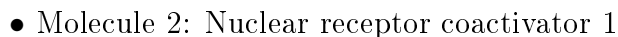


Mol	Chain	Residues	Atoms					ZeroOcc	AltConf
3	A	1	Total	C	F	N	O	0	0
			17	11	3	1	2		
3	B	1	Total	C	F	N	O	0	0
			17	11	3	1	2		

- Molecule 4 is water.

Mol	Chain	Residues	Atoms		ZeroOcc	AltConf
4	A	165	Total	O	0	0
			165	165		
4	B	156	Total	O	0	0
			156	156		
4	C	5	Total	O	0	0
			5	5		
4	D	7	Total	O	0	0
			7	7		

- Molecule 1: Estrogen receptor beta



4 Data and refinement statistics

Property	Value	Source
Space group	P 31	Depositor
Cell constants a, b, c, α , β , γ	70.72Å 70.72Å 109.81Å 90.00° 90.00° 120.00°	Depositor
Resolution (Å)	19.56 – 2.05 19.56 – 2.05	Depositor EDS
% Data completeness (in resolution range)	100.0 (19.56-2.05) 97.9 (19.56-2.05)	Depositor EDS
R_{merge}	0.05	Depositor
R_{sym}	(Not available)	Depositor
$\langle I/\sigma(I) \rangle$ ¹	4.42 (at 2.06Å)	Xtriage
Refinement program	REFMAC 5.5.0109	Depositor
R, R_{free}	0.198 , 0.255 0.199 , 0.256	Depositor DCC
R_{free} test set	1885 reflections (5.26%)	DCC
Wilson B-factor (Å ²)	17.4	Xtriage
Anisotropy	0.043	Xtriage
Bulk solvent k_{sol} (e/Å ³), B_{sol} (Å ²)	(Not available) , (Not available)	EDS
Estimated twinning fraction	0.018 for -h,-k,l 0.469 for h,-h-k,-l 0.019 for -k,-h,-l	Xtriage
L-test for twinning ²	$\langle L \rangle = 0.51$, $\langle L^2 \rangle = 0.34$	Xtriage
Outliers	0 of 37719 reflections	Xtriage
F_o, F_c correlation	0.94	EDS
Total number of atoms	4130	wwPDB-VP
Average B, all atoms (Å ²)	20.0	wwPDB-VP

Xtriage's analysis on translational NCS is as follows: *The largest off-origin peak in the Patterson function is 5.84% of the height of the origin peak. No significant pseudotranslation is detected.*

¹Intensities estimated from amplitudes.

²Theoretical values of $\langle |L| \rangle$, $\langle L^2 \rangle$ for acentric reflections are 0.5, 0.375 respectively for untwinned datasets, and 0.333, 0.2 for perfectly twinned datasets.

5 Model quality i

5.1 Standard geometry i

Bond lengths and bond angles in the following residue types are not validated in this section: W14

The Z score for a bond length (or angle) is the number of standard deviations the observed value is removed from the expected value. A bond length (or angle) with $|Z| > 5$ is considered an outlier worth inspection. RMSZ is the root-mean-square of all Z scores of the bond lengths (or angles).

Mol	Chain	Bond lengths		Bond angles	
		RMSZ	$\# Z > 5$	RMSZ	$\# Z > 5$
1	A	1.02	1/1854 (0.1%)	1.01	7/2506 (0.3%)
1	B	1.04	4/1799 (0.2%)	1.08	6/2432 (0.2%)
2	C	0.87	0/89	0.98	0/118
2	D	0.83	0/89	1.02	0/118
All	All	1.02	5/3831 (0.1%)	1.04	13/5174 (0.3%)

All (5) bond length outliers are listed below:

Mol	Chain	Res	Type	Atoms	Z	Observed(Å)	Ideal(Å)
1	A	485	VAL	CB-CG1	7.35	1.68	1.52
1	B	284	ARG	CD-NE	-5.70	1.36	1.46
1	B	485	VAL	CB-CG1	5.65	1.64	1.52
1	B	356	PHE	CE2-CZ	5.25	1.47	1.37
1	B	369	CYS	CB-SG	-5.20	1.73	1.81

The worst 5 of 13 bond angle outliers are listed below:

Mol	Chain	Res	Type	Atoms	Z	Observed(°)	Ideal(°)
1	B	454	ARG	NE-CZ-NH2	-16.18	112.21	120.30
1	B	284	ARG	NE-CZ-NH1	-13.77	113.42	120.30
1	A	364	ARG	NE-CZ-NH1	13.68	127.14	120.30
1	B	454	ARG	NE-CZ-NH1	11.73	126.17	120.30
1	B	284	ARG	NE-CZ-NH2	10.09	125.34	120.30

There are no chirality outliers.

There are no planarity outliers.

5.2 Too-close contacts [i](#)

In the following table, the Non-H and H(model) columns list the number of non-hydrogen atoms and hydrogen atoms in the chain respectively. The H(added) column lists the number of hydrogen atoms added and optimized by MolProbity. The Clashes column lists the number of clashes within the asymmetric unit, whereas Symm-Clashes lists symmetry related clashes.

Mol	Chain	Non-H	H(model)	H(added)	Clashes	Symm-Clashes
1	A	1821	0	1889	68	0
1	B	1766	0	1843	71	0
2	C	88	0	96	6	0
2	D	88	0	96	7	0
3	A	17	0	10	2	0
3	B	17	0	9	2	0
4	A	165	0	0	11	0
4	B	156	0	0	19	0
4	C	5	0	0	0	0
4	D	7	0	0	0	0
All	All	4130	0	3943	135	0

The all-atom clashscore is defined as the number of clashes found per 1000 atoms (including hydrogen atoms). The all-atom clashscore for this structure is 17.

The worst 5 of 135 close contacts within the same asymmetric unit are listed below, sorted by their clash magnitude.

Atom-1	Atom-2	Interatomic distance (Å)	Clash overlap (Å)
1:B:267:GLN:HB3	4:B:124:HOH:O	1.04	1.21
1:A:300:LYS:O	1:A:300:LYS:HE3	1.44	1.16
1:B:309:MET:SD	4:B:109:HOH:O	2.04	1.14
1:A:463:SER:O	1:B:466:ARG:NH1	1.82	1.12
1:A:470:ASN:HB3	4:B:530:HOH:O	1.53	1.08

There are no symmetry-related clashes.

5.3 Torsion angles [i](#)

5.3.1 Protein backbone [i](#)

In the following table, the Percentiles column shows the percent Ramachandran outliers of the chain as a percentile score with respect to all X-ray entries followed by that with respect to entries of similar resolution.

The Analysed column shows the number of residues for which the backbone conformation was

analysed, and the total number of residues.

Mol	Chain	Analysed	Favoured	Allowed	Outliers	Percentiles	
1	A	227/240 (95%)	217 (96%)	8 (4%)	2 (1%)	21	10
1	B	220/240 (92%)	209 (95%)	9 (4%)	2 (1%)	21	10
2	C	8/19 (42%)	8 (100%)	0	0	100	100
2	D	8/19 (42%)	7 (88%)	1 (12%)	0	100	100
All	All	463/518 (89%)	441 (95%)	18 (4%)	4 (1%)	21	10

All (4) Ramachandran outliers are listed below:

Mol	Chain	Res	Type
1	A	411	TYR
1	A	483	ASN
1	B	483	ASN
1	B	412	PRO

5.3.2 Protein sidechains ⓘ

In the following table, the Percentiles column shows the percent sidechain outliers of the chain as a percentile score with respect to all X-ray entries followed by that with respect to entries of similar resolution.

The Analysed column shows the number of residues for which the sidechain conformation was analysed, and the total number of residues.

Mol	Chain	Analysed	Rotameric	Outliers	Percentiles	
1	A	208/215 (97%)	196 (94%)	12 (6%)	25	14
1	B	201/215 (94%)	190 (94%)	11 (6%)	27	16
2	C	9/18 (50%)	8 (89%)	1 (11%)	8	2
2	D	9/18 (50%)	8 (89%)	1 (11%)	8	2
All	All	427/466 (92%)	402 (94%)	25 (6%)	24	14

5 of 25 residues with a non-rotameric sidechain are listed below:

Mol	Chain	Res	Type
1	A	495	LEU
1	B	329	ARG
2	C	5	LEU
1	B	296	MET
1	B	359	ASP

Some sidechains can be flipped to improve hydrogen bonding and reduce clashes. All (3) such sidechains are listed below:

Mol	Chain	Res	Type
1	A	267	GLN
1	A	470	ASN
1	B	407	ASN

5.3.3 RNA [i](#)

There are no RNA molecules in this entry.

5.4 Non-standard residues in protein, DNA, RNA chains [i](#)

There are no non-standard protein/DNA/RNA residues in this entry.

5.5 Carbohydrates [i](#)

There are no carbohydrates in this entry.

5.6 Ligand geometry [i](#)

2 ligands are modelled in this entry.

In the following table, the Counts columns list the number of bonds (or angles) for which Mogul statistics could be retrieved, the number of bonds (or angles) that are observed in the model and the number of bonds (or angles) that are defined in the chemical component dictionary. The Link column lists molecule types, if any, to which the group is linked. The Z score for a bond length (or angle) is the number of standard deviations the observed value is removed from the expected value. A bond length (or angle) with $|Z| > 2$ is considered an outlier worth inspection. RMSZ is the root-mean-square of all Z scores of the bond lengths (or angles).

Mol	Type	Chain	Res	Link	Bond lengths			Bond angles		
					Counts	RMSZ	$\# Z > 2$	Counts	RMSZ	$\# Z > 2$
3	W14	A	1	-	18,18,18	2.14	5 (27%)	23,27,27	1.82	4 (17%)
3	W14	B	1	-	18,18,18	2.22	8 (44%)	23,27,27	1.65	5 (21%)

In the following table, the Chirals column lists the number of chiral outliers, the number of chiral centers analysed, the number of these observed in the model and the number defined in the chemical component dictionary. Similar counts are reported in the Torsion and Rings columns. '-' means no outliers of that kind were identified.

Mol	Type	Chain	Res	Link	Chirals	Torsions	Rings
3	W14	A	1	-	-	0/10/19/19	0/2/2/2
3	W14	B	1	-	-	0/10/19/19	0/2/2/2

The worst 5 of 13 bond length outliers are listed below:

Mol	Chain	Res	Type	Atoms	Z	Observed(Å)	Ideal(Å)
3	A	1	W14	CAI-CAN	-5.56	1.41	1.51
3	B	1	W14	CAI-CAN	-3.81	1.44	1.51
3	A	1	W14	CAK-CAO	-3.65	1.42	1.51
3	B	1	W14	CAK-CAO	-3.28	1.43	1.51
3	B	1	W14	FAD-CAQ	-2.91	1.18	1.31

The worst 5 of 9 bond angle outliers are listed below:

Mol	Chain	Res	Type	Atoms	Z	Observed(°)	Ideal(°)
3	B	1	W14	CAG-CAF-CAM	-4.75	114.38	119.87
3	B	1	W14	FAE-CAQ-CAL	-2.84	105.39	111.88
3	A	1	W14	CAG-CAF-CAM	-2.65	116.80	119.87
3	A	1	W14	FAE-CAQ-CAL	-2.31	106.59	111.88
3	B	1	W14	CAF-CAM-CAH	2.15	122.65	120.19

There are no chirality outliers.

There are no torsion outliers.

There are no ring outliers.

2 monomers are involved in 4 short contacts:

Mol	Chain	Res	Type	Clashes	Symm-Clashes
3	A	1	W14	2	0
3	B	1	W14	2	0

5.7 Other polymers [i](#)

There are no such residues in this entry.

5.8 Polymer linkage issues [i](#)

There are no chain breaks in this entry.

6 Fit of model and data [i](#)

6.1 Protein, DNA and RNA chains [i](#)

In the following table, the column labelled ‘#RSRZ> 2’ contains the number (and percentage) of RSRZ outliers, followed by percent RSRZ outliers for the chain as percentile scores relative to all X-ray entries and entries of similar resolution. The OWAB column contains the minimum, median, 95th percentile and maximum values of the occupancy-weighted average B-factor per residue. The column labelled ‘Q< 0.9’ lists the number of (and percentage) of residues with an average occupancy less than 0.9.

Mol	Chain	Analysed	<RSRZ>	#RSRZ>2	OWAB(Å ²)	Q<0.9
1	A	229/240 (95%)	-0.37	6 (2%) 59 65	7, 16, 34, 43	0
1	B	224/240 (93%)	-0.34	6 (2%) 58 64	8, 16, 33, 38	0
2	C	10/19 (52%)	0.34	0 100 100	27, 33, 39, 45	0
2	D	10/19 (52%)	0.15	0 100 100	26, 33, 40, 45	0
All	All	473/518 (91%)	-0.33	12 (2%) 61 67	7, 17, 35, 45	0

The worst 5 of 12 RSRZ outliers are listed below:

Mol	Chain	Res	Type	RSRZ
1	B	484	VAL	7.9
1	A	484	VAL	6.7
1	B	413	LEU	4.2
1	A	412	PRO	3.4
1	B	482	LYS	3.2

6.2 Non-standard residues in protein, DNA, RNA chains [i](#)

There are no non-standard protein/DNA/RNA residues in this entry.

6.3 Carbohydrates [i](#)

There are no carbohydrates in this entry.

6.4 Ligands [i](#)

In the following table, the Atoms column lists the number of modelled atoms in the group and the number defined in the chemical component dictionary. LLDF column lists the quality of electron density of the group with respect to its neighbouring residues in protein, DNA or RNA chains. The B-factors column lists the minimum, median, 95th percentile and maximum values of B factors

of atoms in the group. The column labelled 'Q< 0.9' lists the number of atoms with occupancy less than 0.9.

Mol	Type	Chain	Res	Atoms	RSCC	RSR	LLDF	B-factors(\AA^2)	Q<0.9
3	W14	A	1	17/17	0.91	0.12	1.88	6,13,25,27	0
3	W14	B	1	17/17	0.95	0.10	0.67	7,14,25,27	0

6.5 Other polymers [i](#)

There are no such residues in this entry.