



wwPDB X-ray Structure Validation Summary Report ⓘ

Feb 1, 2016 – 07:21 PM GMT

PDB ID : 4ONV
Title : Crystal structure of YagE, a KDG aldolase protein in complex with 2-Keto-3-deoxy gluconate
Authors : Manoj Kumar, P.; Bhaskar, V.; Manicka, S.; Krishnaswamy, S.
Deposited on : 2014-01-29
Resolution : 2.57 Å(reported)

This is a wwPDB X-ray Structure Validation Summary Report for a publicly released PDB entry.
We welcome your comments at validation@mail.wwpdb.org
A user guide is available at
<http://wwpdb.org/validation/2016/XrayValidationReportHelp>
with specific help available everywhere you see the ⓘ symbol.

The following versions of software and data (see [references ⓘ](#)) were used in the production of this report:

MolProbity : 4.02b-467
Mogul : 1.7 (RC4), CSD as536be (2015)
Xtriage (Phenix) : 1.9-1692
EDS : rb-20026688
Percentile statistics : 20151230.v01 (using entries in the PDB archive December 30th 2015)
Refmac : 5.8.0135
CCP4 : 6.5.0
Ideal geometry (proteins) : Engh & Huber (2001)
Ideal geometry (DNA, RNA) : Parkinson et al. (1996)
Validation Pipeline (wwPDB-VP) : trunk26865

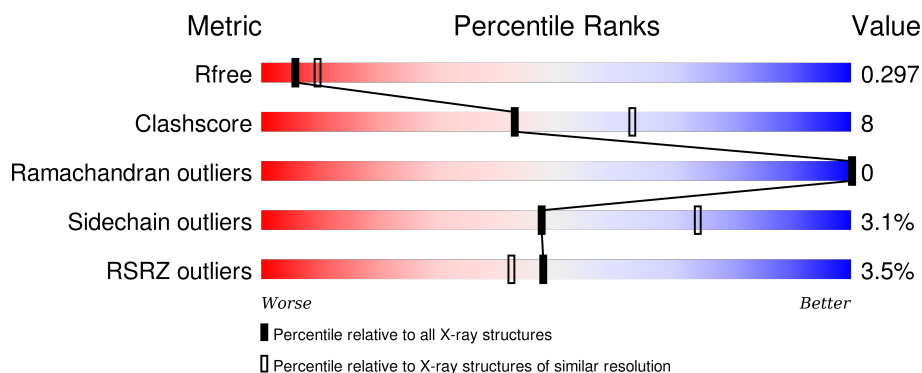
1 Overall quality at a glance

The following experimental techniques were used to determine the structure:

X-RAY DIFFRACTION

The reported resolution of this entry is 2.57 Å.

Percentile scores (ranging between 0-100) for global validation metrics of the entry are shown in the following graphic. The table shows the number of entries on which the scores are based.



Metric	Whole archive (#Entries)	Similar resolution (#Entries, resolution range(Å))
R_{free}	91344	2636 (2.60-2.56)
Clashscore	102246	3003 (2.60-2.56)
Ramachandran outliers	100387	2956 (2.60-2.56)
Sidechain outliers	100360	2956 (2.60-2.56)
RSRZ outliers	91569	2642 (2.60-2.56)

The table below summarises the geometric issues observed across the polymeric chains and their fit to the electron density. The red, orange, yellow and green segments on the lower bar indicate the fraction of residues that contain outliers for ≥ 3 , 2, 1 and 0 types of geometric quality criteria. A grey segment represents the fraction of residues that are not modelled. The numeric value for each fraction is indicated below the corresponding segment, with a dot representing fractions $\leq 5\%$. The upper red bar (where present) indicates the fraction of residues that have poor fit to the electron density. The numeric value is given above the bar.

Mol	Chain	Length	Quality of chain
1	A	343	<div> <div>3%</div> <div> <div></div> <div>77%</div> <div>10%</div> <div>•</div> <div>13%</div> </div> </div>
1	B	343	<div> <div>2%</div> <div> <div></div> <div>76%</div> <div>11%</div> <div>•</div> <div>13%</div> </div> </div>
1	C	343	<div> <div>4%</div> <div> <div></div> <div>75%</div> <div>12%</div> <div></div> <div>13%</div> </div> </div>
1	D	343	<div> <div>3%</div> <div> <div></div> <div>77%</div> <div>9%</div> <div></div> <div>13%</div> </div> </div>

The following table lists non-polymeric compounds, carbohydrate monomers and non-standard

residues in protein, DNA, RNA chains that are outliers for geometric or electron-density-fit criteria:

Mol	Type	Chain	Res	Chirality	Geometry	Clashes	Electron density
2	EDO	B	402	-	-	-	X
2	EDO	C	403	-	-	X	-
2	EDO	D	402	-	-	X	X
2	EDO	D	403	-	-	-	X
3	GOL	A	403	-	-	-	X
3	GOL	A	405	-	-	-	X
3	GOL	B	405	-	-	X	X
3	GOL	B	407	-	-	-	X
3	GOL	B	408	-	-	X	-
3	GOL	C	406	-	-	-	X
3	GOL	D	406	-	-	-	X
3	GOL	D	407	-	-	-	X
3	GOL	D	408	-	-	-	X
4	KDG	A	406	-	-	X	X
4	KDG	B	409	-	-	-	X
4	KDG	C	408	-	-	X	X

2 Entry composition

There are 5 unique types of molecules in this entry. The entry contains 9430 atoms, of which 0 are hydrogens and 0 are deuteriums.

In the tables below, the ZeroOcc column contains the number of atoms modelled with zero occupancy, the AltConf column contains the number of residues with at least one atom in alternate conformation and the Trace column contains the number of residues modelled with at most 2 atoms.

- Molecule 1 is a protein called Probable 2-keto-3-deoxy-galactonate aldolase YagE.

Mol	Chain	Residues	Atoms					ZeroOcc	AltConf	Trace
1	A	298	Total	C	N	O	S	0	0	0
			2259	1446	386	421	6			
1	B	298	Total	C	N	O	S	0	0	0
			2260	1447	387	420	6			
1	C	298	Total	C	N	O	S	0	1	0
			2268	1451	389	422	6			
1	D	298	Total	C	N	O	S	0	0	0
			2261	1447	387	421	6			

There are 164 discrepancies between the modelled and reference sequences:

Chain	Residue	Modelled	Actual	Comment	Reference
A	-17	MET	-	EXPRESSION TAG	UNP P75682
A	-16	GLY	-	EXPRESSION TAG	UNP P75682
A	-15	SER	-	EXPRESSION TAG	UNP P75682
A	-14	SER	-	EXPRESSION TAG	UNP P75682
A	-13	HIS	-	EXPRESSION TAG	UNP P75682
A	-12	HIS	-	EXPRESSION TAG	UNP P75682
A	-11	HIS	-	EXPRESSION TAG	UNP P75682
A	-10	HIS	-	EXPRESSION TAG	UNP P75682
A	-9	HIS	-	EXPRESSION TAG	UNP P75682
A	-8	HIS	-	EXPRESSION TAG	UNP P75682
A	-7	SER	-	EXPRESSION TAG	UNP P75682
A	-6	ALA	-	EXPRESSION TAG	UNP P75682
A	-5	GLY	-	EXPRESSION TAG	UNP P75682
A	-4	GLU	-	EXPRESSION TAG	UNP P75682
A	-3	ASN	-	EXPRESSION TAG	UNP P75682
A	-2	LEU	-	EXPRESSION TAG	UNP P75682
A	-1	TYR	-	EXPRESSION TAG	UNP P75682
A	0	PHE	-	EXPRESSION TAG	UNP P75682
A	1	GLN	-	EXPRESSION TAG	UNP P75682
A	2	GLY	-	EXPRESSION TAG	UNP P75682
A	3	GLN	-	EXPRESSION TAG	UNP P75682

Continued on next page...

Continued from previous page...

Chain	Residue	Modelled	Actual	Comment	Reference
A	4	GLN	-	EXPRESSION TAG	UNP P75682
A	5	GLY	-	EXPRESSION TAG	UNP P75682
A	6	ASP	-	EXPRESSION TAG	UNP P75682
A	7	LEU	-	EXPRESSION TAG	UNP P75682
A	310	CYS	-	EXPRESSION TAG	UNP P75682
A	311	GLY	-	EXPRESSION TAG	UNP P75682
A	312	ARG	-	EXPRESSION TAG	UNP P75682
A	313	THR	-	EXPRESSION TAG	UNP P75682
A	314	ARG	-	EXPRESSION TAG	UNP P75682
A	315	ALA	-	EXPRESSION TAG	UNP P75682
A	316	PRO	-	EXPRESSION TAG	UNP P75682
A	317	PRO	-	EXPRESSION TAG	UNP P75682
A	318	PRO	-	EXPRESSION TAG	UNP P75682
A	319	PRO	-	EXPRESSION TAG	UNP P75682
A	320	PRO	-	EXPRESSION TAG	UNP P75682
A	321	LEU	-	EXPRESSION TAG	UNP P75682
A	322	ARG	-	EXPRESSION TAG	UNP P75682
A	323	SER	-	EXPRESSION TAG	UNP P75682
A	324	GLY	-	EXPRESSION TAG	UNP P75682
A	325	CYS	-	EXPRESSION TAG	UNP P75682
B	-17	MET	-	EXPRESSION TAG	UNP P75682
B	-16	GLY	-	EXPRESSION TAG	UNP P75682
B	-15	SER	-	EXPRESSION TAG	UNP P75682
B	-14	SER	-	EXPRESSION TAG	UNP P75682
B	-13	HIS	-	EXPRESSION TAG	UNP P75682
B	-12	HIS	-	EXPRESSION TAG	UNP P75682
B	-11	HIS	-	EXPRESSION TAG	UNP P75682
B	-10	HIS	-	EXPRESSION TAG	UNP P75682
B	-9	HIS	-	EXPRESSION TAG	UNP P75682
B	-8	HIS	-	EXPRESSION TAG	UNP P75682
B	-7	SER	-	EXPRESSION TAG	UNP P75682
B	-6	ALA	-	EXPRESSION TAG	UNP P75682
B	-5	GLY	-	EXPRESSION TAG	UNP P75682
B	-4	GLU	-	EXPRESSION TAG	UNP P75682
B	-3	ASN	-	EXPRESSION TAG	UNP P75682
B	-2	LEU	-	EXPRESSION TAG	UNP P75682
B	-1	TYR	-	EXPRESSION TAG	UNP P75682
B	0	PHE	-	EXPRESSION TAG	UNP P75682
B	1	GLN	-	EXPRESSION TAG	UNP P75682
B	2	GLY	-	EXPRESSION TAG	UNP P75682
B	3	GLN	-	EXPRESSION TAG	UNP P75682
B	4	GLN	-	EXPRESSION TAG	UNP P75682

Continued on next page...

Continued from previous page...

Chain	Residue	Modelled	Actual	Comment	Reference
B	5	GLY	-	EXPRESSION TAG	UNP P75682
B	6	ASP	-	EXPRESSION TAG	UNP P75682
B	7	LEU	-	EXPRESSION TAG	UNP P75682
B	310	CYS	-	EXPRESSION TAG	UNP P75682
B	311	GLY	-	EXPRESSION TAG	UNP P75682
B	312	ARG	-	EXPRESSION TAG	UNP P75682
B	313	THR	-	EXPRESSION TAG	UNP P75682
B	314	ARG	-	EXPRESSION TAG	UNP P75682
B	315	ALA	-	EXPRESSION TAG	UNP P75682
B	316	PRO	-	EXPRESSION TAG	UNP P75682
B	317	PRO	-	EXPRESSION TAG	UNP P75682
B	318	PRO	-	EXPRESSION TAG	UNP P75682
B	319	PRO	-	EXPRESSION TAG	UNP P75682
B	320	PRO	-	EXPRESSION TAG	UNP P75682
B	321	LEU	-	EXPRESSION TAG	UNP P75682
B	322	ARG	-	EXPRESSION TAG	UNP P75682
B	323	SER	-	EXPRESSION TAG	UNP P75682
B	324	GLY	-	EXPRESSION TAG	UNP P75682
B	325	CYS	-	EXPRESSION TAG	UNP P75682
C	-17	MET	-	EXPRESSION TAG	UNP P75682
C	-16	GLY	-	EXPRESSION TAG	UNP P75682
C	-15	SER	-	EXPRESSION TAG	UNP P75682
C	-14	SER	-	EXPRESSION TAG	UNP P75682
C	-13	HIS	-	EXPRESSION TAG	UNP P75682
C	-12	HIS	-	EXPRESSION TAG	UNP P75682
C	-11	HIS	-	EXPRESSION TAG	UNP P75682
C	-10	HIS	-	EXPRESSION TAG	UNP P75682
C	-9	HIS	-	EXPRESSION TAG	UNP P75682
C	-8	HIS	-	EXPRESSION TAG	UNP P75682
C	-7	SER	-	EXPRESSION TAG	UNP P75682
C	-6	ALA	-	EXPRESSION TAG	UNP P75682
C	-5	GLY	-	EXPRESSION TAG	UNP P75682
C	-4	GLU	-	EXPRESSION TAG	UNP P75682
C	-3	ASN	-	EXPRESSION TAG	UNP P75682
C	-2	LEU	-	EXPRESSION TAG	UNP P75682
C	-1	TYR	-	EXPRESSION TAG	UNP P75682
C	0	PHE	-	EXPRESSION TAG	UNP P75682
C	1	GLN	-	EXPRESSION TAG	UNP P75682
C	2	GLY	-	EXPRESSION TAG	UNP P75682
C	3	GLN	-	EXPRESSION TAG	UNP P75682
C	4	GLN	-	EXPRESSION TAG	UNP P75682
C	5	GLY	-	EXPRESSION TAG	UNP P75682

Continued on next page...

Continued from previous page...

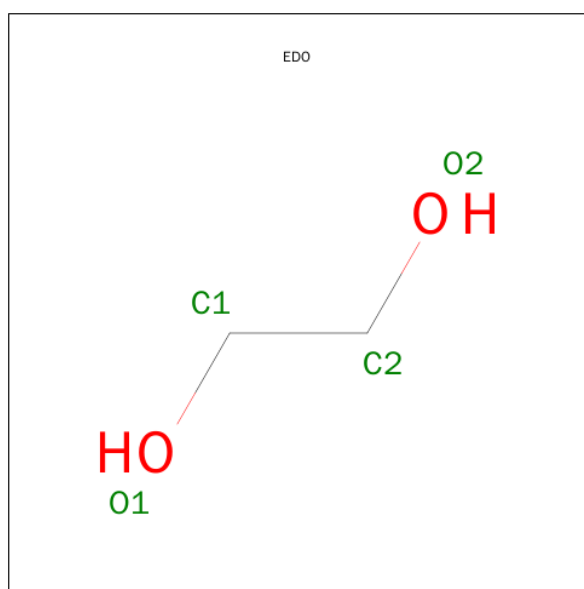
Chain	Residue	Modelled	Actual	Comment	Reference
C	6	ASP	-	EXPRESSION TAG	UNP P75682
C	7	LEU	-	EXPRESSION TAG	UNP P75682
C	310	CYS	-	EXPRESSION TAG	UNP P75682
C	311	GLY	-	EXPRESSION TAG	UNP P75682
C	312	ARG	-	EXPRESSION TAG	UNP P75682
C	313	THR	-	EXPRESSION TAG	UNP P75682
C	314	ARG	-	EXPRESSION TAG	UNP P75682
C	315	ALA	-	EXPRESSION TAG	UNP P75682
C	316	PRO	-	EXPRESSION TAG	UNP P75682
C	317	PRO	-	EXPRESSION TAG	UNP P75682
C	318	PRO	-	EXPRESSION TAG	UNP P75682
C	319	PRO	-	EXPRESSION TAG	UNP P75682
C	320	PRO	-	EXPRESSION TAG	UNP P75682
C	321	LEU	-	EXPRESSION TAG	UNP P75682
C	322	ARG	-	EXPRESSION TAG	UNP P75682
C	323	SER	-	EXPRESSION TAG	UNP P75682
C	324	GLY	-	EXPRESSION TAG	UNP P75682
C	325	CYS	-	EXPRESSION TAG	UNP P75682
D	-17	MET	-	EXPRESSION TAG	UNP P75682
D	-16	GLY	-	EXPRESSION TAG	UNP P75682
D	-15	SER	-	EXPRESSION TAG	UNP P75682
D	-14	SER	-	EXPRESSION TAG	UNP P75682
D	-13	HIS	-	EXPRESSION TAG	UNP P75682
D	-12	HIS	-	EXPRESSION TAG	UNP P75682
D	-11	HIS	-	EXPRESSION TAG	UNP P75682
D	-10	HIS	-	EXPRESSION TAG	UNP P75682
D	-9	HIS	-	EXPRESSION TAG	UNP P75682
D	-8	HIS	-	EXPRESSION TAG	UNP P75682
D	-7	SER	-	EXPRESSION TAG	UNP P75682
D	-6	ALA	-	EXPRESSION TAG	UNP P75682
D	-5	GLY	-	EXPRESSION TAG	UNP P75682
D	-4	GLU	-	EXPRESSION TAG	UNP P75682
D	-3	ASN	-	EXPRESSION TAG	UNP P75682
D	-2	LEU	-	EXPRESSION TAG	UNP P75682
D	-1	TYR	-	EXPRESSION TAG	UNP P75682
D	0	PHE	-	EXPRESSION TAG	UNP P75682
D	1	GLN	-	EXPRESSION TAG	UNP P75682
D	2	GLY	-	EXPRESSION TAG	UNP P75682
D	3	GLN	-	EXPRESSION TAG	UNP P75682
D	4	GLN	-	EXPRESSION TAG	UNP P75682
D	5	GLY	-	EXPRESSION TAG	UNP P75682
D	6	ASP	-	EXPRESSION TAG	UNP P75682

Continued on next page...

Continued from previous page...

Chain	Residue	Modelled	Actual	Comment	Reference
D	7	LEU	-	EXPRESSION TAG	UNP P75682
D	310	CYS	-	EXPRESSION TAG	UNP P75682
D	311	GLY	-	EXPRESSION TAG	UNP P75682
D	312	ARG	-	EXPRESSION TAG	UNP P75682
D	313	THR	-	EXPRESSION TAG	UNP P75682
D	314	ARG	-	EXPRESSION TAG	UNP P75682
D	315	ALA	-	EXPRESSION TAG	UNP P75682
D	316	PRO	-	EXPRESSION TAG	UNP P75682
D	317	PRO	-	EXPRESSION TAG	UNP P75682
D	318	PRO	-	EXPRESSION TAG	UNP P75682
D	319	PRO	-	EXPRESSION TAG	UNP P75682
D	320	PRO	-	EXPRESSION TAG	UNP P75682
D	321	LEU	-	EXPRESSION TAG	UNP P75682
D	322	ARG	-	EXPRESSION TAG	UNP P75682
D	323	SER	-	EXPRESSION TAG	UNP P75682
D	324	GLY	-	EXPRESSION TAG	UNP P75682
D	325	CYS	-	EXPRESSION TAG	UNP P75682

- Molecule 2 is 1,2-ETHANEDIOL (three-letter code: EDO) (formula: C₂H₆O₂).



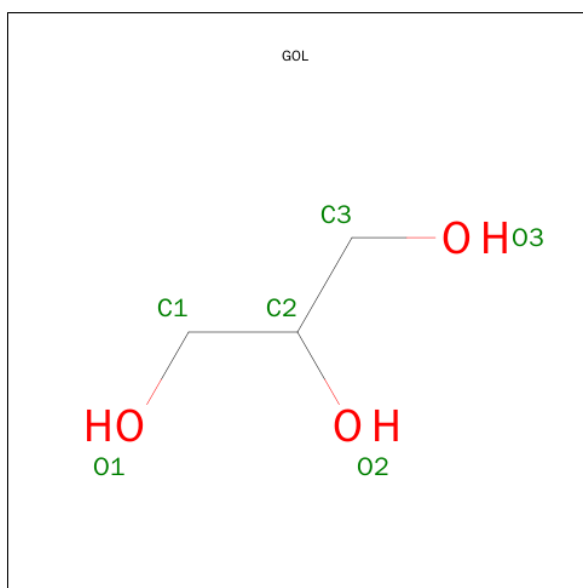
Mol	Chain	Residues	Atoms			ZeroOcc	AltConf
2	A	1	Total	C	O	0	0
			4	2	2		
2	B	1	Total	C	O	0	0
			4	2	2		
2	B	1	Total	C	O	0	0
			4	2	2		

Continued on next page...

Continued from previous page...

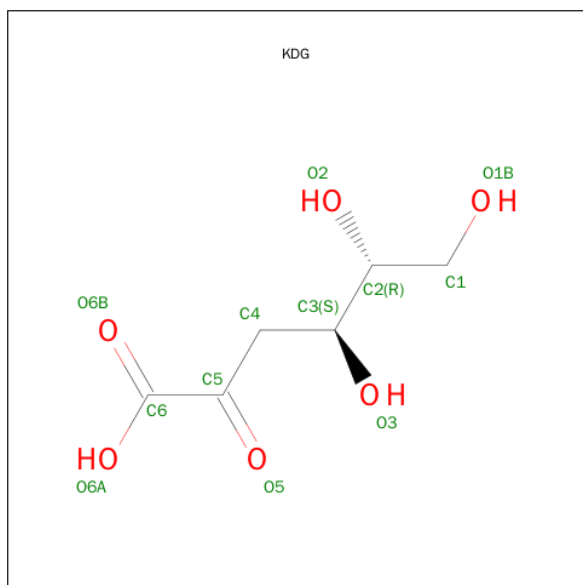
Mol	Chain	Residues	Atoms			ZeroOcc	AltConf
2	B	1	Total	C	O	0	0
			4	2	2		
2	B	1	Total	C	O	0	0
			4	2	2		
2	C	1	Total	C	O	0	0
			4	2	2		
2	C	1	Total	C	O	0	0
			4	2	2		
2	C	1	Total	C	O	0	0
			4	2	2		
2	C	1	Total	C	O	0	0
			4	2	2		
2	C	1	Total	C	O	0	0
			4	2	2		
2	D	1	Total	C	O	0	0
			4	2	2		
2	D	1	Total	C	O	0	0
			4	2	2		
2	D	1	Total	C	O	0	0
			4	2	2		
2	D	1	Total	C	O	0	0
			4	2	2		

- Molecule 3 is GLYCEROL (three-letter code: GOL) (formula: $C_3H_8O_3$).



Mol	Chain	Residues	Atoms			ZeroOcc	AltConf
3	A	1	Total	C	O	0	0
			6	3	3		
3	A	1	Total	C	O	0	0
			6	3	3		
3	A	1	Total	C	O	0	0
			6	3	3		
3	A	1	Total	C	O	0	0
			6	3	3		
3	B	1	Total	C	O	0	0
			6	3	3		
3	B	1	Total	C	O	0	0
			6	3	3		
3	B	1	Total	C	O	0	0
			6	3	3		
3	B	1	Total	C	O	0	0
			6	3	3		
3	C	1	Total	C	O	0	0
			6	3	3		
3	D	1	Total	C	O	0	0
			6	3	3		
3	D	1	Total	C	O	0	0
			6	3	3		
3	D	1	Total	C	O	0	0
			6	3	3		
3	D	1	Total	C	O	0	0
			6	3	3		

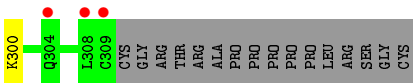
- Molecule 4 is 2-KETO-3-DEOXYGLUCONATE (three-letter code: KDG) (formula: $C_6H_{10}O_6$).



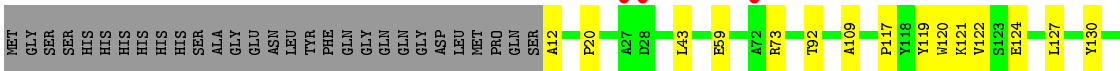
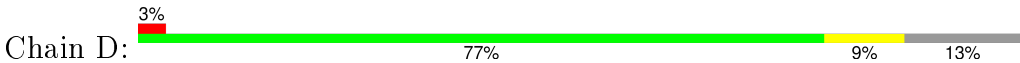
Mol	Chain	Residues	Atoms			ZeroOcc	AltConf
4	A	1	Total	C	O	0	0
			11	6	5		
4	B	1	Total	C	O	0	0
			11	6	5		
4	C	1	Total	C	O	0	0
			11	6	5		
4	D	1	Total	C	O	0	0
			11	6	5		

- Molecule 5 is water.

Mol	Chain	Residues	Atoms		ZeroOcc	AltConf
5	A	48	Total	O	0	0
			48	48		
5	B	59	Total	O	0	0
			59	59		
5	C	41	Total	O	0	0
			41	41		
5	D	52	Total	O	0	0
			52	52		



● Molecule 1: Probable 2-keto-3-deoxy-galactonate aldolase YagE



4 Data and refinement statistics

Property	Value	Source
Space group	P 21 21 2	Depositor
Cell constants a, b, c, α , β , γ	141.17Å 155.41Å 55.51Å 90.00° 90.00° 90.00°	Depositor
Resolution (Å)	19.79 – 2.57 19.79 – 2.57	Depositor EDS
% Data completeness (in resolution range)	98.9 (19.79-2.57) 99.2 (19.79-2.57)	Depositor EDS
R_{merge}	0.41	Depositor
R_{sym}	(Not available)	Depositor
$\langle I/\sigma(I) \rangle$ ¹	2.62 (at 2.56Å)	Xtriage
Refinement program	REFMAC 5.7.0032	Depositor
R, R_{free}	0.247 , 0.284 0.257 , 0.297	Depositor DCC
R_{free} test set	1970 reflections (5.26%)	DCC
Wilson B-factor (Å ²)	23.1	Xtriage
Anisotropy	0.210	Xtriage
Bulk solvent k_{sol} (e/Å ³), B_{sol} (Å ²)	0.39 , 38.8	EDS
Estimated twinning fraction	No twinning to report.	Xtriage
L-test for twinning ²	$\langle L \rangle = 0.47$, $\langle L^2 \rangle = 0.30$	Xtriage
Outliers	4 of 39391 reflections (0.010%)	Xtriage
F_o, F_c correlation	0.90	EDS
Total number of atoms	9430	wwPDB-VP
Average B, all atoms (Å ²)	22.0	wwPDB-VP

Xtriage's analysis on translational NCS is as follows: *The analyses of the Patterson function reveals a significant off-origin peak that is 45.08 % of the origin peak, indicating pseudo translational symmetry. The chance of finding a peak of this or larger height randomly in a structure without pseudo translational symmetry is equal to 1.3923e-04. The detected translational NCS is most likely also responsible for the elevated intensity ratio.*

¹ Intensities estimated from amplitudes.

² Theoretical values of $\langle |L| \rangle$, $\langle L^2 \rangle$ for acentric reflections are 0.5, 0.375 respectively for untwinned datasets, and 0.333, 0.2 for perfectly twinned datasets.

5 Model quality [i](#)

5.1 Standard geometry [i](#)

Bond lengths and bond angles in the following residue types are not validated in this section: GOL, KDG, EDO

The Z score for a bond length (or angle) is the number of standard deviations the observed value is removed from the expected value. A bond length (or angle) with $|Z| > 5$ is considered an outlier worth inspection. RMSZ is the root-mean-square of all Z scores of the bond lengths (or angles).

Mol	Chain	Bond lengths		Bond angles	
		RMSZ	$\# Z > 5$	RMSZ	$\# Z > 5$
1	A	0.58	0/2307	0.74	0/3144
1	B	0.59	0/2308	0.75	0/3145
1	C	0.59	0/2316	0.75	0/3155
1	D	0.59	0/2309	0.74	1/3147 (0.0%)
All	All	0.59	0/9240	0.74	1/12591 (0.0%)

There are no bond length outliers.

All (1) bond angle outliers are listed below:

Mol	Chain	Res	Type	Atoms	Z	Observed(°)	Ideal(°)
1	D	300	LYS	CA-CB-CG	6.46	127.60	113.40

There are no chirality outliers.

There are no planarity outliers.

5.2 Too-close contacts [i](#)

In the following table, the Non-H and H(model) columns list the number of non-hydrogen atoms and hydrogen atoms in the chain respectively. The H(added) column lists the number of hydrogen atoms added and optimized by MolProbity. The Clashes column lists the number of clashes within the asymmetric unit, whereas Symm-Clashes lists symmetry related clashes.

Mol	Chain	Non-H	H(model)	H(added)	Clashes	Symm-Clashes
1	A	2259	0	2272	35	0
1	B	2260	0	2283	44	0
1	C	2268	0	2286	38	0
1	D	2261	0	2280	33	0
2	A	4	0	6	2	0
2	B	16	0	24	5	0

Continued on next page...

Continued from previous page...

Mol	Chain	Non-H	H(model)	H(added)	Clashes	Symm-Clashes
2	C	24	0	36	6	0
2	D	16	0	24	7	0
3	A	24	0	32	1	0
3	B	24	0	32	14	0
3	C	6	0	8	3	0
3	D	24	0	32	5	0
4	A	11	0	9	11	0
4	B	11	0	9	5	0
4	C	11	0	9	9	0
4	D	11	0	9	2	0
5	A	48	0	0	9	0
5	B	59	0	0	12	0
5	C	41	0	0	8	0
5	D	52	0	0	10	0
All	All	9430	0	9351	153	0

The all-atom clashscore is defined as the number of clashes found per 1000 atoms (including hydrogen atoms). The all-atom clashscore for this structure is 8.

The worst 5 of 153 close contacts within the same asymmetric unit are listed below, sorted by their clash magnitude.

Atom-1	Atom-2	Interatomic distance (Å)	Clash overlap (Å)
1:A:87:ILE:HD13	5:A:528:HOH:O	1.41	1.17
1:C:61:SER:O	1:D:92:THR:HG23	1.42	1.16
1:A:53:PHE:HB2	5:A:528:HOH:O	1.56	1.03
1:A:174:LYS:HE2	4:A:406:KDG:O3	1.62	0.99
1:C:121:LYS:HE2	1:C:151:THR:O	1.71	0.91

There are no symmetry-related clashes.

5.3 Torsion angles [i](#)

5.3.1 Protein backbone [i](#)

In the following table, the Percentiles column shows the percent Ramachandran outliers of the chain as a percentile score with respect to all X-ray entries followed by that with respect to entries of similar resolution.

The Analysed column shows the number of residues for which the backbone conformation was analysed, and the total number of residues.

Mol	Chain	Analysed	Favoured	Allowed	Outliers	Percentiles	
1	A	296/343 (86%)	290 (98%)	6 (2%)	0	100	100
1	B	296/343 (86%)	289 (98%)	7 (2%)	0	100	100
1	C	297/343 (87%)	290 (98%)	7 (2%)	0	100	100
1	D	296/343 (86%)	289 (98%)	7 (2%)	0	100	100
All	All	1185/1372 (86%)	1158 (98%)	27 (2%)	0	100	100

There are no Ramachandran outliers to report.

5.3.2 Protein sidechains ⓘ

In the following table, the Percentiles column shows the percent sidechain outliers of the chain as a percentile score with respect to all X-ray entries followed by that with respect to entries of similar resolution.

The Analysed column shows the number of residues for which the sidechain conformation was analysed, and the total number of residues.

Mol	Chain	Analysed	Rotameric	Outliers	Percentiles	
1	A	240/280 (86%)	231 (96%)	9 (4%)	40	67
1	B	242/280 (86%)	234 (97%)	8 (3%)	45	71
1	C	242/280 (86%)	234 (97%)	8 (3%)	45	71
1	D	242/280 (86%)	237 (98%)	5 (2%)	61	84
All	All	966/1120 (86%)	936 (97%)	30 (3%)	47	74

5 of 30 residues with a non-rotameric sidechain are listed below:

Mol	Chain	Res	Type
1	B	147	PHE
1	B	305	GLN
1	D	145	TYR
1	B	200	LEU
1	C	45	LYS

Some sidechains can be flipped to improve hydrogen bonding and reduce clashes. 5 of 8 such sidechains are listed below:

Mol	Chain	Res	Type
1	B	105	GLN
1	D	257	GLN
1	C	62	GLN

Continued on next page...

Continued from previous page...

Mol	Chain	Res	Type
1	B	62	GLN
1	B	188	HIS

5.3.3 RNA ⓘ

There are no RNA molecules in this entry.

5.4 Non-standard residues in protein, DNA, RNA chains ⓘ

There are no non-standard protein/DNA/RNA residues in this entry.

5.5 Carbohydrates ⓘ

There are no carbohydrates in this entry.

5.6 Ligand geometry ⓘ

32 ligands are modelled in this entry.

In the following table, the Counts columns list the number of bonds (or angles) for which Mogul statistics could be retrieved, the number of bonds (or angles) that are observed in the model and the number of bonds (or angles) that are defined in the chemical component dictionary. The Link column lists molecule types, if any, to which the group is linked. The Z score for a bond length (or angle) is the number of standard deviations the observed value is removed from the expected value. A bond length (or angle) with $|Z| > 2$ is considered an outlier worth inspection. RMSZ is the root-mean-square of all Z scores of the bond lengths (or angles).

Mol	Type	Chain	Res	Link	Bond lengths			Bond angles		
					Counts	RMSZ	$\# Z > 2$	Counts	RMSZ	$\# Z > 2$
2	EDO	A	401	-	3,3,3	0.32	0	2,2,2	0.56	0
3	GOL	A	402	-	5,5,5	0.52	0	5,5,5	0.51	0
3	GOL	A	403	-	5,5,5	0.88	0	5,5,5	1.32	0
3	GOL	A	404	-	5,5,5	0.59	0	5,5,5	0.49	0
3	GOL	A	405	-	5,5,5	0.69	0	5,5,5	0.90	0
4	KDG	A	406	1	7,10,11	0.59	0	6,12,14	1.03	0
2	EDO	B	401	-	3,3,3	0.59	0	2,2,2	0.41	0
2	EDO	B	402	-	3,3,3	0.24	0	2,2,2	1.19	0
2	EDO	B	403	-	3,3,3	0.59	0	2,2,2	0.63	0
2	EDO	B	404	-	3,3,3	0.56	0	2,2,2	0.24	0
3	GOL	B	405	-	5,5,5	0.48	0	5,5,5	1.56	1 (20%)
3	GOL	B	406	-	5,5,5	0.34	0	5,5,5	0.29	0

Mol	Type	Chain	Res	Link	Bond lengths			Bond angles		
					Counts	RMSZ	# Z > 2	Counts	RMSZ	# Z > 2
3	GOL	B	407	-	5,5,5	0.57	0	5,5,5	0.71	0
3	GOL	B	408	-	5,5,5	0.57	0	5,5,5	1.64	2 (40%)
4	KDG	B	409	1	7,10,11	0.58	0	6,12,14	1.15	1 (16%)
2	EDO	C	401	-	3,3,3	0.39	0	2,2,2	0.31	0
2	EDO	C	402	-	3,3,3	0.62	0	2,2,2	0.27	0
2	EDO	C	403	-	3,3,3	0.49	0	2,2,2	0.13	0
2	EDO	C	404	-	3,3,3	0.59	0	2,2,2	0.28	0
2	EDO	C	405	-	3,3,3	0.73	0	2,2,2	0.06	0
3	GOL	C	406	-	5,5,5	0.56	0	5,5,5	0.85	0
2	EDO	C	407	-	3,3,3	0.47	0	2,2,2	0.40	0
4	KDG	C	408	1	7,10,11	0.24	0	6,12,14	1.26	0
2	EDO	D	401	-	3,3,3	0.60	0	2,2,2	0.64	0
2	EDO	D	402	-	3,3,3	0.45	0	2,2,2	0.38	0
2	EDO	D	403	-	3,3,3	0.30	0	2,2,2	0.51	0
3	GOL	D	404	-	5,5,5	0.49	0	5,5,5	0.61	0
2	EDO	D	405	-	3,3,3	0.72	0	2,2,2	0.18	0
3	GOL	D	406	-	5,5,5	0.62	0	5,5,5	0.69	0
3	GOL	D	407	-	5,5,5	0.51	0	5,5,5	0.75	0
3	GOL	D	408	-	5,5,5	0.55	0	5,5,5	0.81	0
4	KDG	D	409	1	7,10,11	0.57	0	6,12,14	1.11	1 (16%)

In the following table, the Chirals column lists the number of chiral outliers, the number of chiral centers analysed, the number of these observed in the model and the number defined in the chemical component dictionary. Similar counts are reported in the Torsion and Rings columns. '-' means no outliers of that kind were identified.

Mol	Type	Chain	Res	Link	Chirals	Torsions	Rings
2	EDO	A	401	-	-	0/1/1/1	0/0/0/0
3	GOL	A	402	-	-	0/4/4/4	0/0/0/0
3	GOL	A	403	-	-	0/4/4/4	0/0/0/0
3	GOL	A	404	-	-	0/4/4/4	0/0/0/0
3	GOL	A	405	-	-	0/4/4/4	0/0/0/0
4	KDG	A	406	1	-	0/9/11/14	0/0/0/0
2	EDO	B	401	-	-	0/1/1/1	0/0/0/0
2	EDO	B	402	-	-	0/1/1/1	0/0/0/0
2	EDO	B	403	-	-	0/1/1/1	0/0/0/0
2	EDO	B	404	-	-	0/1/1/1	0/0/0/0
3	GOL	B	405	-	-	0/4/4/4	0/0/0/0
3	GOL	B	406	-	-	0/4/4/4	0/0/0/0
3	GOL	B	407	-	-	0/4/4/4	0/0/0/0
3	GOL	B	408	-	-	0/4/4/4	0/0/0/0
4	KDG	B	409	1	-	0/9/11/14	0/0/0/0

Continued on next page...

Continued from previous page...

Mol	Type	Chain	Res	Link	Chirals	Torsions	Rings
2	EDO	C	401	-	-	0/1/1/1	0/0/0/0
2	EDO	C	402	-	-	0/1/1/1	0/0/0/0
2	EDO	C	403	-	-	0/1/1/1	0/0/0/0
2	EDO	C	404	-	-	0/1/1/1	0/0/0/0
2	EDO	C	405	-	-	0/1/1/1	0/0/0/0
3	GOL	C	406	-	-	0/4/4/4	0/0/0/0
2	EDO	C	407	-	-	0/1/1/1	0/0/0/0
4	KDG	C	408	1	-	0/9/11/14	0/0/0/0
2	EDO	D	401	-	-	0/1/1/1	0/0/0/0
2	EDO	D	402	-	-	0/1/1/1	0/0/0/0
2	EDO	D	403	-	-	0/1/1/1	0/0/0/0
3	GOL	D	404	-	-	0/4/4/4	0/0/0/0
2	EDO	D	405	-	-	0/1/1/1	0/0/0/0
3	GOL	D	406	-	-	0/4/4/4	0/0/0/0
3	GOL	D	407	-	-	0/4/4/4	0/0/0/0
3	GOL	D	408	-	-	0/4/4/4	0/0/0/0
4	KDG	D	409	1	-	0/9/11/14	0/0/0/0

There are no bond length outliers.

All (5) bond angle outliers are listed below:

Mol	Chain	Res	Type	Atoms	Z	Observed(°)	Ideal(°)
4	D	409	KDG	O2-C2-C3	2.06	114.01	109.79
3	B	408	GOL	O1-C1-C2	2.31	121.40	110.18
3	B	408	GOL	O3-C3-C2	2.32	121.41	110.18
4	B	409	KDG	O2-C2-C3	2.45	114.79	109.79
3	B	405	GOL	C3-C2-C1	2.55	121.11	111.12

There are no chirality outliers.

There are no torsion outliers.

There are no ring outliers.

22 monomers are involved in 70 short contacts:

Mol	Chain	Res	Type	Clashes	Symm-Clashes
2	A	401	EDO	2	0
3	A	403	GOL	1	0
4	A	406	KDG	11	0
2	B	402	EDO	2	0
2	B	403	EDO	2	0
2	B	404	EDO	1	0

Continued on next page...

Continued from previous page...

Mol	Chain	Res	Type	Clashes	Symm-Clashes
3	B	405	GOL	9	0
3	B	406	GOL	1	0
3	B	408	GOL	4	0
4	B	409	KDG	5	0
2	C	403	EDO	4	0
2	C	405	EDO	1	0
3	C	406	GOL	3	0
2	C	407	EDO	1	0
4	C	408	KDG	9	0
2	D	402	EDO	5	0
3	D	404	GOL	2	0
2	D	405	EDO	2	0
3	D	406	GOL	1	0
3	D	407	GOL	1	0
3	D	408	GOL	1	0
4	D	409	KDG	2	0

5.7 Other polymers ⓘ

There are no such residues in this entry.

5.8 Polymer linkage issues ⓘ

There are no chain breaks in this entry.

6 Fit of model and data [i](#)

6.1 Protein, DNA and RNA chains [i](#)

In the following table, the column labelled ‘#RSRZ> 2’ contains the number (and percentage) of RSRZ outliers, followed by percent RSRZ outliers for the chain as percentile scores relative to all X-ray entries and entries of similar resolution. The OWAB column contains the minimum, median, 95th percentile and maximum values of the occupancy-weighted average B-factor per residue. The column labelled ‘Q< 0.9’ lists the number of (and percentage) of residues with an average occupancy less than 0.9.

Mol	Chain	Analysed	<RSRZ>	#RSRZ>2	OWAB(Å ²)	Q<0.9
1	A	298/343 (86%)	0.43	10 (3%) 49 43	14, 23, 37, 43	0
1	B	298/343 (86%)	0.32	8 (2%) 58 54	13, 20, 32, 45	0
1	C	298/343 (86%)	0.38	13 (4%) 38 33	12, 22, 38, 57	0
1	D	298/343 (86%)	0.37	11 (3%) 45 40	12, 21, 34, 47	0
All	All	1192/1372 (86%)	0.38	42 (3%) 48 42	12, 21, 36, 57	0

The worst 5 of 42 RSRZ outliers are listed below:

Mol	Chain	Res	Type	RSRZ
1	C	192	GLY	3.9
1	C	139	THR	3.3
1	D	240	GLY	3.3
1	A	192	GLY	3.1
1	B	46	ALA	3.1

6.2 Non-standard residues in protein, DNA, RNA chains [i](#)

There are no non-standard protein/DNA/RNA residues in this entry.

6.3 Carbohydrates [i](#)

There are no carbohydrates in this entry.

6.4 Ligands [i](#)

In the following table, the Atoms column lists the number of modelled atoms in the group and the number defined in the chemical component dictionary. LLDF column lists the quality of electron density of the group with respect to its neighbouring residues in protein, DNA or RNA chains. The B-factors column lists the minimum, median, 95th percentile and maximum values of B factors

of atoms in the group. The column labelled 'Q< 0.9' lists the number of atoms with occupancy less than 0.9.

Mol	Type	Chain	Res	Atoms	RSCC	RSR	LLDF	B-factors(Å ²)	Q<0.9
3	GOL	A	403	6/6	0.57	0.39	7.95	29,31,32,32	0
3	GOL	C	406	6/6	0.73	0.45	7.22	32,33,34,34	0
3	GOL	D	406	6/6	0.64	0.27	5.89	35,37,40,40	0
3	GOL	B	405	6/6	0.72	0.39	4.98	25,31,31,33	0
4	KDG	A	406	11/12	0.80	0.33	4.34	15,17,18,18	11
3	GOL	D	407	6/6	0.73	0.28	4.14	31,35,38,40	0
2	EDO	D	402	4/4	0.87	0.31	4.13	18,19,19,19	0
4	KDG	C	408	11/12	0.80	0.29	4.05	17,19,20,20	11
2	EDO	B	402	4/4	0.90	0.23	3.19	16,17,17,18	0
3	GOL	A	405	6/6	0.81	0.33	2.52	35,37,39,39	0
3	GOL	D	408	6/6	0.66	0.31	2.42	37,43,43,46	0
2	EDO	D	403	4/4	0.93	0.23	2.30	24,24,26,29	0
4	KDG	B	409	11/12	0.83	0.22	2.23	30,35,39,42	0
3	GOL	B	407	6/6	0.64	0.37	2.08	40,41,42,43	0
4	KDG	D	409	11/12	0.84	0.21	1.74	25,29,31,33	0
2	EDO	A	401	4/4	0.94	0.18	0.72	26,27,28,28	0
3	GOL	A	402	6/6	0.74	0.24	0.64	37,39,40,40	0
3	GOL	B	406	6/6	0.85	0.19	0.59	29,31,35,37	0
2	EDO	C	407	4/4	0.85	0.18	0.33	32,33,35,36	0
2	EDO	C	401	4/4	0.95	0.12	-1.40	23,23,23,25	0
2	EDO	B	401	4/4	0.91	0.13	-1.54	27,27,28,28	0
3	GOL	B	408	6/6	0.86	0.30	-	20,20,21,21	0
2	EDO	C	404	4/4	0.84	0.20	-	31,34,35,35	0
2	EDO	C	403	4/4	0.77	0.31	-	31,32,32,33	0
2	EDO	D	405	4/4	0.78	0.28	-	19,19,19,20	0
3	GOL	A	404	6/6	0.76	0.34	-	28,31,34,35	0
3	GOL	D	404	6/6	0.67	0.33	-	36,39,41,42	0
2	EDO	C	402	4/4	0.85	0.38	-	19,19,20,20	0
2	EDO	C	405	4/4	0.84	0.25	-	24,24,25,26	0
2	EDO	D	401	4/4	0.83	0.35	-	25,25,26,27	0
2	EDO	B	404	4/4	0.84	0.16	-	33,34,35,36	0
2	EDO	B	403	4/4	0.79	0.29	-	25,26,27,28	0

6.5 Other polymers ⓘ

There are no such residues in this entry.