



# Full wwPDB X-ray Structure Validation Report ⓘ

Jan 31, 2016 – 09:24 PM GMT

PDB ID : 1OWH  
Title : Substituted 2-Naphthamidine Inhibitors of Urokinase  
Authors : Wendt, M.D.; Rockway, T.W.; Geyer, A.; McClellan, W.; Weitzberg, M.; Zhao, X.; Mantei, R.; Nienaber, V.L.; Stewart, K.; Klinghofer, V.; Giranda, V.L.  
Deposited on : 2003-03-28  
Resolution : 1.61 Å(reported)

This is a Full wwPDB X-ray Structure Validation Report for a publicly released PDB entry.  
We welcome your comments at [validation@mail.wwpdb.org](mailto:validation@mail.wwpdb.org)  
A user guide is available at  
<http://wwpdb.org/validation/2016/XrayValidationReportHelp>  
with specific help available everywhere you see the ⓘ symbol.

---

The following versions of software and data (see [references ⓘ](#)) were used in the production of this report:

MolProbity : 4.02b-467  
Mogul : 1.7 (RC4), CSD as536be (2015)  
Xtriage (Phenix) : 1.9-1692  
EDS : rb-20026688  
Percentile statistics : 20151230.v01 (using entries in the PDB archive December 30th 2015)  
Refmac : 5.8.0135  
CCP4 : 6.5.0  
Ideal geometry (proteins) : Engh & Huber (2001)  
Ideal geometry (DNA, RNA) : Parkinson et al. (1996)  
Validation Pipeline (wwPDB-VP) : trunk26865

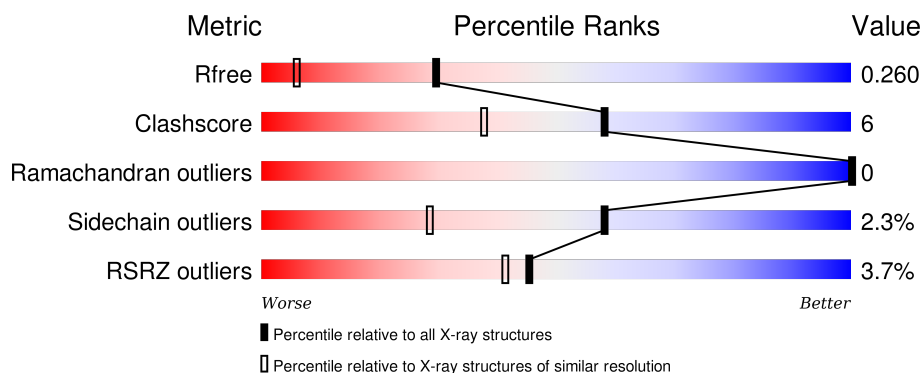
# 1 Overall quality at a glance

The following experimental techniques were used to determine the structure:

## *X-RAY DIFFRACTION*

The reported resolution of this entry is 1.61 Å.

Percentile scores (ranging between 0-100) for global validation metrics of the entry are shown in the following graphic. The table shows the number of entries on which the scores are based.



Metric	Whole archive (#Entries)	Similar resolution (#Entries, resolution range(Å))
$R_{free}$	91344	3202 (1.64-1.60)
Clashscore	102246	3500 (1.64-1.60)
Ramachandran outliers	100387	3411 (1.64-1.60)
Sidechain outliers	100360	3410 (1.64-1.60)
RSRZ outliers	91569	3207 (1.64-1.60)

The table below summarises the geometric issues observed across the polymeric chains and their fit to the electron density. The red, orange, yellow and green segments on the lower bar indicate the fraction of residues that contain outliers for  $\geq 3$ , 2, 1 and 0 types of geometric quality criteria. A grey segment represents the fraction of residues that are not modelled. The numeric value for each fraction is indicated below the corresponding segment, with a dot representing fractions  $\leq 5\%$ . The upper red bar (where present) indicates the fraction of residues that have poor fit to the electron density. The numeric value is given above the bar.

Mol	Chain	Length	Quality of chain
1	A	245	<div> <div>4%</div> <div>80%</div> <div>16%</div> <div>...</div> </div>

The following table lists non-polymeric compounds, carbohydrate monomers and non-standard residues in protein, DNA, RNA chains that are outliers for geometric or electron-density-fit criteria:

Mol	Type	Chain	Res	Chirality	Geometry	Clashes	Electron density
2	SO4	A	302	-	-	X	X

*Continued on next page...*

*Continued from previous page...*

Mol	Type	Chain	Res	Chirality	Geometry	Clashes	Electron density
3	239	A	1001	-	-	-	X

## 2 Entry composition [i](#)

There are 4 unique types of molecules in this entry. The entry contains 2143 atoms, of which 0 are hydrogens and 0 are deuteriums.

In the tables below, the ZeroOcc column contains the number of atoms modelled with zero occupancy, the AltConf column contains the number of residues with at least one atom in alternate conformation and the Trace column contains the number of residues modelled with at most 2 atoms.

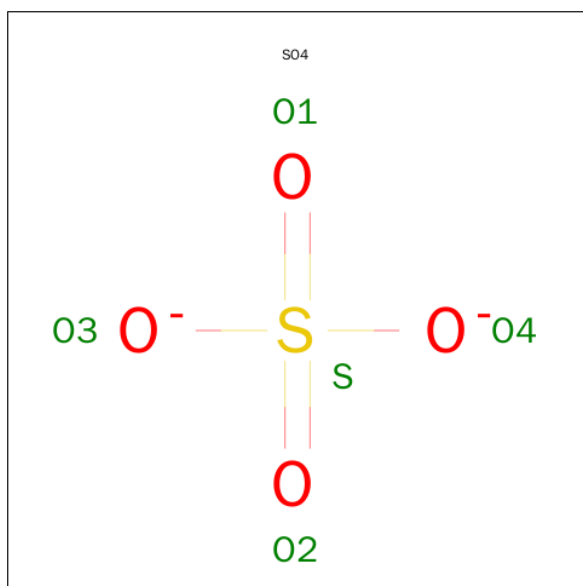
- Molecule 1 is a protein called Urokinase-type plasminogen activator.

Mol	Chain	Residues	Atoms					ZeroOcc	AltConf	Trace
			Total	C	N	O	S			
1	A	245	1934	1219	338	361	16	0	0	0

There is a discrepancy between the modelled and reference sequences:

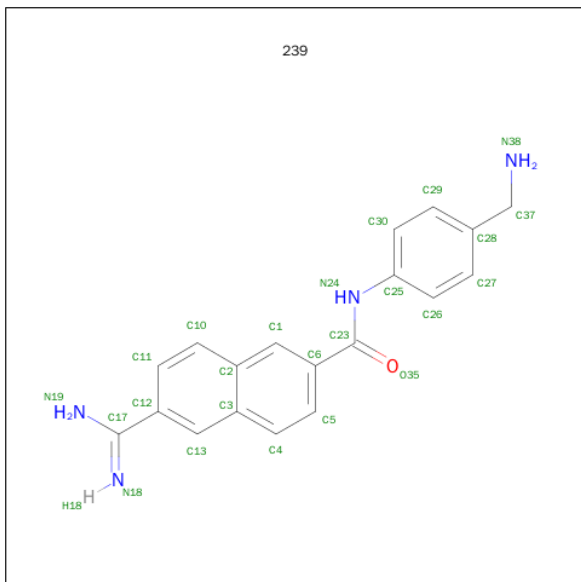
Chain	Residue	Modelled	Actual	Comment	Reference
A	156	GLN	ASN	CONFLICT	UNP P00749

- Molecule 2 is SULFATE ION (three-letter code: SO<sub>4</sub>) (formula: O<sub>4</sub>S).



Mol	Chain	Residues	Atoms			ZeroOcc	AltConf
			Total	O	S		
2	A	1	5	4	1	0	0
2	A	1	5	4	1	0	0
2	A	1	5	4	1	0	0

- Molecule 3 is 6-[(Z)-AMINO(IMINO)METHYL]-N-[4-(AMINOMETHYL)PHENYL]-2-NAPHTHAMIDE (three-letter code: 239) (formula:  $C_{19}H_{18}N_4O$ ).



Mol	Chain	Residues	Atoms				ZeroOcc	AltConf
3	A	1	Total	C	N	O	0	0
			24	19	4	1		

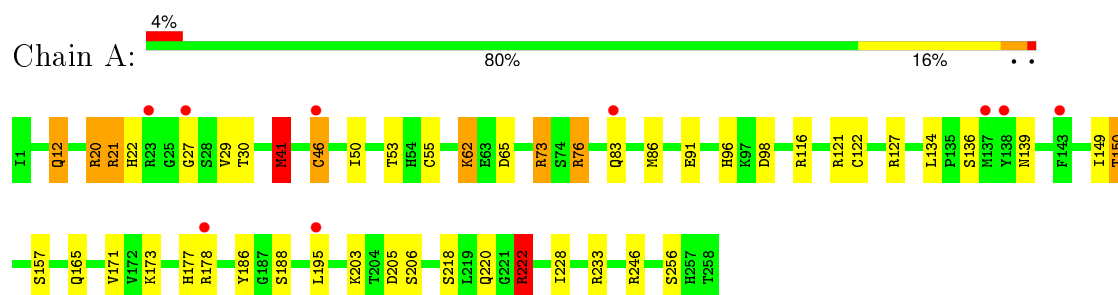
- Molecule 4 is water.

Mol	Chain	Residues	Atoms		ZeroOcc	AltConf
4	A	170	Total	O	0	0
			170	170		

### 3 Residue-property plots

These plots are drawn for all protein, RNA and DNA chains in the entry. The first graphic for a chain summarises the proportions of errors displayed in the second graphic. The second graphic shows the sequence view annotated by issues in geometry and electron density. Residues are color-coded according to the number of geometric quality criteria for which they contain at least one outlier: green = 0, yellow = 1, orange = 2 and red = 3 or more. A red dot above a residue indicates a poor fit to the electron density ( $RSRZ > 2$ ). Stretches of 2 or more consecutive residues without any outlier are shown as a green connector. Residues present in the sample, but not in the model, are shown in grey.

- Molecule 1: Urokinase-type plasminogen activator



## 4 Data and refinement statistics

Property	Value	Source
Space group	P 21 21 21	Depositor
Cell constants a, b, c, $\alpha$ , $\beta$ , $\gamma$	55.16Å 53.00Å 82.30Å 90.00° 90.00° 90.00°	Depositor
Resolution (Å)	10.00 – 1.61 20.57 – 1.61	Depositor EDS
% Data completeness (in resolution range)	74.4 (10.00-1.61) 90.6 (20.57-1.61)	Depositor EDS
$R_{merge}$	(Not available)	Depositor
$R_{sym}$	(Not available)	Depositor
$\langle I/\sigma(I) \rangle$ <sup>1</sup>	2.82 (at 1.60Å)	Xtriage
Refinement program	X-PLOR 98.0	Depositor
R, $R_{free}$	0.211 , 0.265 0.216 , 0.260	Depositor DCC
$R_{free}$ test set	2937 reflections (10.17%)	DCC
Wilson B-factor (Å <sup>2</sup> )	11.7	Xtriage
Anisotropy	0.345	Xtriage
Bulk solvent $k_{sol}$ (e/Å <sup>3</sup> ), $B_{sol}$ (Å <sup>2</sup> )	0.40 , 59.5	EDS
Estimated twinning fraction	0.026 for k,h,-l	Xtriage
L-test for twinning <sup>2</sup>	$\langle  L  \rangle = 0.50$ , $\langle L^2 \rangle = 0.33$	Xtriage
Outliers	1 of 30336 reflections (0.003%)	Xtriage
$F_o, F_c$ correlation	0.93	EDS
Total number of atoms	2143	wwPDB-VP
Average B, all atoms (Å <sup>2</sup> )	10.0	wwPDB-VP

Xtriage's analysis on translational NCS is as follows: *The largest off-origin peak in the Patterson function is 6.86% of the height of the origin peak. No significant pseudotranslation is detected.*

<sup>1</sup>Intensities estimated from amplitudes.

<sup>2</sup>Theoretical values of  $\langle |L| \rangle$ ,  $\langle L^2 \rangle$  for acentric reflections are 0.5, 0.375 respectively for untwinned datasets, and 0.333, 0.2 for perfectly twinned datasets.

## 5 Model quality

### 5.1 Standard geometry

Bond lengths and bond angles in the following residue types are not validated in this section: 239, SO4

The Z score for a bond length (or angle) is the number of standard deviations the observed value is removed from the expected value. A bond length (or angle) with  $|Z| > 5$  is considered an outlier worth inspection. RMSZ is the root-mean-square of all Z scores of the bond lengths (or angles).

Mol	Chain	Bond lengths		Bond angles	
		RMSZ	$\# Z  > 5$	RMSZ	$\# Z  > 5$
1	A	1.26	3/1983 (0.2%)	1.80	36/2685 (1.3%)

Chiral center outliers are detected by calculating the chiral volume of a chiral center and verifying if the center is modelled as a planar moiety or with the opposite hand. A planarity outlier is detected by checking planarity of atoms in a peptide group, atoms in a mainchain group or atoms of a sidechain that are expected to be planar.

Mol	Chain	#Chirality outliers	#Planarity outliers
1	A	0	1

All (3) bond length outliers are listed below:

Mol	Chain	Res	Type	Atoms	Z	Observed(Å)	Ideal(Å)
1	A	41	MET	CB-CG	-7.85	1.26	1.51
1	A	188	SER	CB-OG	6.03	1.50	1.42
1	A	157	SER	CB-OG	5.55	1.49	1.42

All (36) bond angle outliers are listed below:

Mol	Chain	Res	Type	Atoms	Z	Observed(°)	Ideal(°)
1	A	73	ARG	NE-CZ-NH2	-25.52	107.54	120.30
1	A	73	ARG	NE-CZ-NH1	25.43	133.02	120.30
1	A	76	ARG	NE-CZ-NH2	-14.81	112.89	120.30
1	A	76	ARG	NE-CZ-NH1	12.79	126.69	120.30
1	A	21	ARG	NE-CZ-NH2	-10.19	115.20	120.30
1	A	222	ARG	NE-CZ-NH1	9.87	125.24	120.30
1	A	121	ARG	NE-CZ-NH1	9.61	125.11	120.30
1	A	205	ASP	CB-CG-OD1	9.20	126.58	118.30
1	A	222	ARG	NE-CZ-NH2	-9.19	115.70	120.30
1	A	116	ARG	NE-CZ-NH1	-9.12	115.74	120.30

*Continued on next page...*



*Continued from previous page...*

Mol	Chain	Res	Type	Atoms	Z	Observed(°)	Ideal(°)
1	A	178	ARG	NE-CZ-NH2	-8.10	116.25	120.30
1	A	73	ARG	CD-NE-CZ	7.76	134.47	123.60
1	A	21	ARG	NE-CZ-NH1	6.74	123.67	120.30
1	A	246	ARG	NE-CZ-NH1	6.63	123.61	120.30
1	A	220	GLN	CB-CG-CD	6.55	128.62	111.60
1	A	46	CYS	CA-CB-SG	6.53	125.75	114.00
1	A	83	GLN	CB-CG-CD	6.16	127.61	111.60
1	A	127	ARG	NE-CZ-NH1	6.04	123.32	120.30
1	A	171	VAL	CG1-CB-CG2	-6.00	101.29	110.90
1	A	62	LYS	CB-CG-CD	-5.98	96.04	111.60
1	A	150	THR	CA-CB-CG2	-5.87	104.19	112.40
1	A	12	GLN	CB-CG-CD	-5.73	96.70	111.60
1	A	27	GLY	C-N-CA	-5.65	107.57	121.70
1	A	139	ASN	N-CA-CB	-5.65	100.42	110.60
1	A	233	ARG	NH1-CZ-NH2	-5.57	113.27	119.40
1	A	233	ARG	NE-CZ-NH2	5.53	123.06	120.30
1	A	29	VAL	CG1-CB-CG2	-5.52	102.07	110.90
1	A	186	TYR	O-C-N	-5.50	113.85	123.20
1	A	116	ARG	NE-CZ-NH2	5.50	123.05	120.30
1	A	73	ARG	CG-CD-NE	-5.41	100.44	111.80
1	A	178	ARG	NE-CZ-NH1	5.38	122.99	120.30
1	A	53	THR	O-C-N	-5.30	114.21	122.70
1	A	55	CYS	O-C-N	5.30	131.17	122.70
1	A	218	SER	O-C-N	-5.20	114.38	122.70
1	A	20	ARG	NE-CZ-NH2	5.10	122.85	120.30
1	A	203	LYS	CB-CA-C	-5.05	100.30	110.40

There are no chirality outliers.

All (1) planarity outliers are listed below:

Mol	Chain	Res	Type	Group
1	A	73	ARG	Sidechain

## 5.2 Too-close contacts ⓘ

In the following table, the Non-H and H(model) columns list the number of non-hydrogen atoms and hydrogen atoms in the chain respectively. The H(added) column lists the number of hydrogen atoms added and optimized by MolProbity. The Clashes column lists the number of clashes within the asymmetric unit, whereas Symm-Clashes lists symmetry related clashes.

Mol	Chain	Non-H	H(model)	H(added)	Clashes	Symm-Clashes
1	A	1934	0	1882	21	0
2	A	15	0	0	2	0
3	A	24	0	18	2	0
4	A	170	0	0	9	0
All	All	2143	0	1900	23	0

The all-atom clashscore is defined as the number of clashes found per 1000 atoms (including hydrogen atoms). The all-atom clashscore for this structure is 6.

All (23) close contacts within the same asymmetric unit are listed below, sorted by their clash magnitude.

Atom-1	Atom-2	Interatomic distance (Å)	Clash overlap (Å)
1:A:46:CYS:HB3	1:A:122:CYS:SG	2.12	0.89
1:A:41:MET:HE3	1:A:134:LEU:HD21	1.61	0.83
1:A:41:MET:CE	1:A:134:LEU:HD21	2.16	0.75
1:A:86:MET:HG3	4:A:1047:HOH:O	1.94	0.67
1:A:41:MET:HG3	4:A:1092:HOH:O	1.95	0.67
1:A:22:HIS:HE1	1:A:30:THR:OG1	1.85	0.60
1:A:96:HIS:HD2	1:A:98:ASP:H	1.49	0.59
1:A:41:MET:CE	1:A:50:ILE:HG21	2.37	0.54
1:A:228:ILE:HD12	4:A:1006:HOH:O	2.09	0.52
1:A:165:GLN:HG2	4:A:1127:HOH:O	2.09	0.52
1:A:62:LYS:HE3	1:A:91:GLU:O	2.10	0.51
1:A:165:GLN:HG2	4:A:1104:HOH:O	2.12	0.49
1:A:195:LEU:HB3	4:A:1102:HOH:O	2.13	0.48
1:A:41:MET:HE2	1:A:50:ILE:HG21	1.96	0.47
1:A:76:ARG:HH11	1:A:165:GLN:HE21	1.63	0.46
1:A:12:GLN:HG2	1:A:150:THR:OG1	2.15	0.46
1:A:177:HIS:HE1	4:A:1050:HOH:O	2.02	0.43
2:A:302:SO4:O3	3:A:1001:239:H30	2.20	0.41
1:A:222:ARG:HG3	4:A:1108:HOH:O	2.19	0.41
2:A:302:SO4:O3	3:A:1001:239:C30	2.69	0.41
1:A:20:ARG:HG3	1:A:65:ASP:HB3	2.02	0.41
1:A:149:ILE:HD12	1:A:206:SER:HB3	2.04	0.40
1:A:173:LYS:HE3	4:A:1136:HOH:O	2.21	0.40

There are no symmetry-related clashes.

## 5.3 Torsion angles

### 5.3.1 Protein backbone

In the following table, the Percentiles column shows the percent Ramachandran outliers of the chain as a percentile score with respect to all X-ray entries followed by that with respect to entries of similar resolution.

The Analysed column shows the number of residues for which the backbone conformation was analysed, and the total number of residues.

Mol	Chain	Analysed	Favoured	Allowed	Outliers	Percentiles	
1	A	243/245 (99%)	237 (98%)	6 (2%)	0	100	100

There are no Ramachandran outliers to report.

### 5.3.2 Protein sidechains

In the following table, the Percentiles column shows the percent sidechain outliers of the chain as a percentile score with respect to all X-ray entries followed by that with respect to entries of similar resolution.

The Analysed column shows the number of residues for which the sidechain conformation was analysed, and the total number of residues.

Mol	Chain	Analysed	Rotameric	Outliers	Percentiles	
1	A	213/214 (100%)	208 (98%)	5 (2%)	58	28

All (5) residues with a non-rotameric sidechain are listed below:

Mol	Chain	Res	Type
1	A	21	ARG
1	A	41	MET
1	A	136	SER
1	A	222	ARG
1	A	256	SER

Some sidechains can be flipped to improve hydrogen bonding and reduce clashes. All (7) such sidechains are listed below:

Mol	Chain	Res	Type
1	A	11	ASN
1	A	22	HIS
1	A	96	HIS

*Continued on next page...*

*Continued from previous page...*

Mol	Chain	Res	Type
1	A	130	GLN
1	A	156	GLN
1	A	165	GLN
1	A	177	HIS

### 5.3.3 RNA [i](#)

There are no RNA molecules in this entry.

### 5.4 Non-standard residues in protein, DNA, RNA chains [i](#)

There are no non-standard protein/DNA/RNA residues in this entry.

### 5.5 Carbohydrates [i](#)

There are no carbohydrates in this entry.

### 5.6 Ligand geometry [i](#)

4 ligands are modelled in this entry.

In the following table, the Counts columns list the number of bonds (or angles) for which Mogul statistics could be retrieved, the number of bonds (or angles) that are observed in the model and the number of bonds (or angles) that are defined in the chemical component dictionary. The Link column lists molecule types, if any, to which the group is linked. The Z score for a bond length (or angle) is the number of standard deviations the observed value is removed from the expected value. A bond length (or angle) with  $|Z| > 2$  is considered an outlier worth inspection. RMSZ is the root-mean-square of all Z scores of the bond lengths (or angles).

Mol	Type	Chain	Res	Link	Bond lengths			Bond angles		
					Counts	RMSZ	$\# Z  > 2$	Counts	RMSZ	$\# Z  > 2$
3	239	A	1001	-	26,26,26	1.79	7 (26%)	33,36,36	3.05	19 (57%)
2	SO4	A	301	-	4,4,4	1.17	0	6,6,6	1.07	1 (16%)
2	SO4	A	302	-	4,4,4	1.23	0	6,6,6	3.31	3 (50%)
2	SO4	A	303	-	4,4,4	1.71	1 (25%)	6,6,6	1.03	1 (16%)

In the following table, the Chirals column lists the number of chiral outliers, the number of chiral centers analysed, the number of these observed in the model and the number defined in the chemical component dictionary. Similar counts are reported in the Torsion and Rings columns. '-' means no outliers of that kind were identified.

Mol	Type	Chain	Res	Link	Chirals	Torsions	Rings
3	239	A	1001	-	-	0/14/14/14	0/3/3/3
2	SO4	A	301	-	-	0/0/0/0	0/0/0/0
2	SO4	A	302	-	-	0/0/0/0	0/0/0/0
2	SO4	A	303	-	-	0/0/0/0	0/0/0/0

All (8) bond length outliers are listed below:

Mol	Chain	Res	Type	Atoms	Z	Observed(Å)	Ideal(Å)
2	A	303	SO4	O2-S	-2.30	1.39	1.47
3	A	1001	239	C6-C23	-2.06	1.45	1.50
3	A	1001	239	C17-N18	2.02	1.35	1.28
3	A	1001	239	C1-C6	2.05	1.40	1.37
3	A	1001	239	C4-C5	2.26	1.41	1.36
3	A	1001	239	C10-C11	2.50	1.41	1.36
3	A	1001	239	C13-C12	3.61	1.43	1.37
3	A	1001	239	C11-C12	5.43	1.48	1.39

All (24) bond angle outliers are listed below:

Mol	Chain	Res	Type	Atoms	Z	Observed(°)	Ideal(°)
3	A	1001	239	C11-C12-C13	-6.70	110.60	119.29
3	A	1001	239	C5-C6-C1	-6.67	110.64	119.29
2	A	302	SO4	O3-S-O2	-5.66	57.52	110.19
3	A	1001	239	C5-C4-C3	-4.01	114.61	120.83
3	A	1001	239	C11-C10-C2	-3.87	114.81	120.83
3	A	1001	239	O35-C23-C6	-3.25	115.42	120.97
3	A	1001	239	C26-C27-C28	-3.11	116.78	121.04
2	A	303	SO4	O2-S-O1	-2.46	101.70	109.50
3	A	1001	239	C1-C2-C3	-2.30	115.78	118.92
3	A	1001	239	C29-C30-C25	-2.29	117.71	120.28
3	A	1001	239	C4-C3-C2	2.18	122.96	118.92
2	A	301	SO4	O2-S-O1	2.19	116.44	109.50
3	A	1001	239	C12-C13-C3	2.36	125.81	121.19
3	A	1001	239	C10-C2-C3	2.49	123.53	118.92
3	A	1001	239	C6-C23-N24	2.62	121.05	115.94
3	A	1001	239	C26-C25-C30	2.77	122.91	119.06
3	A	1001	239	C13-C12-C17	2.77	124.12	120.24
3	A	1001	239	C6-C1-C2	2.91	126.87	121.19
2	A	302	SO4	O4-S-O3	3.03	121.29	108.98
3	A	1001	239	C27-C28-C29	3.43	123.62	118.13
3	A	1001	239	C11-C12-C17	3.58	125.21	120.67
2	A	302	SO4	O2-S-O1	4.85	124.86	109.50
3	A	1001	239	C10-C11-C12	5.18	127.30	120.84

*Continued on next page...*

*Continued from previous page...*

Mol	Chain	Res	Type	Atoms	Z	Observed(°)	Ideal(°)
3	A	1001	239	C4-C5-C6	6.39	128.81	120.84

There are no chirality outliers.

There are no torsion outliers.

There are no ring outliers.

2 monomers are involved in 2 short contacts:

Mol	Chain	Res	Type	Clashes	Symm-Clashes
3	A	1001	239	2	0
2	A	302	SO4	2	0

## 5.7 Other polymers [i](#)

There are no such residues in this entry.

## 5.8 Polymer linkage issues [i](#)

There are no chain breaks in this entry.

## 6 Fit of model and data [i](#)

### 6.1 Protein, DNA and RNA chains [i](#)

In the following table, the column labelled ‘#RSRZ> 2’ contains the number (and percentage) of RSRZ outliers, followed by percent RSRZ outliers for the chain as percentile scores relative to all X-ray entries and entries of similar resolution. The OWAB column contains the minimum, median, 95<sup>th</sup> percentile and maximum values of the occupancy-weighted average B-factor per residue. The column labelled ‘Q< 0.9’ lists the number of (and percentage) of residues with an average occupancy less than 0.9.

Mol	Chain	Analysed	<RSRZ>	#RSRZ>2	OWAB(Å <sup>2</sup> )	Q<0.9
1	A	245/245 (100%)	0.34	9 (3%) 45 41	3, 8, 19, 35	0

All (9) RSRZ outliers are listed below:

Mol	Chain	Res	Type	RSRZ
1	A	143	PHE	3.5
1	A	23	ARG	3.4
1	A	178	ARG	3.3
1	A	46	CYS	3.1
1	A	83	GLN	2.5
1	A	27	GLY	2.4
1	A	137	MET	2.4
1	A	138	TYR	2.3
1	A	195	LEU	2.0

### 6.2 Non-standard residues in protein, DNA, RNA chains [i](#)

There are no non-standard protein/DNA/RNA residues in this entry.

### 6.3 Carbohydrates [i](#)

There are no carbohydrates in this entry.

### 6.4 Ligands [i](#)

In the following table, the Atoms column lists the number of modelled atoms in the group and the number defined in the chemical component dictionary. LLDF column lists the quality of electron density of the group with respect to its neighbouring residues in protein, DNA or RNA chains. The B-factors column lists the minimum, median, 95<sup>th</sup> percentile and maximum values of B factors

of atoms in the group. The column labelled 'Q< 0.9' lists the number of atoms with occupancy less than 0.9.

Mol	Type	Chain	Res	Atoms	RSCC	RSR	LLDF	B-factors( $\text{\AA}^2$ )	Q<0.9
2	SO4	A	302	5/5	0.79	0.23	11.25	18,22,27,28	0
3	239	A	1001	24/24	0.83	0.15	2.35	2,10,15,16	0
2	SO4	A	301	5/5	0.97	0.08	-1.00	11,12,15,17	0
2	SO4	A	303	5/5	0.96	0.13	-	35,36,38,39	0

## 6.5 Other polymers [i](#)

There are no such residues in this entry.