



wwPDB X-ray Structure Validation Summary Report ⓘ

Feb 1, 2016 – 05:08 AM GMT

PDB ID : 2PKG
Title : Structure of a complex between the A subunit of protein phosphatase 2A and the small t antigen of SV40
Authors : Jeffrey, P.D.; Shi, Y.
Deposited on : 2007-04-17
Resolution : 3.30 Å(reported)

This is a wwPDB X-ray Structure Validation Summary Report for a publicly released PDB entry.
We welcome your comments at validation@mail.wwpdb.org
A user guide is available at
<http://wwpdb.org/validation/2016/XrayValidationReportHelp>
with specific help available everywhere you see the ⓘ symbol.

The following versions of software and data (see [references ⓘ](#)) were used in the production of this report:

MolProbity : 4.02b-467
Mogul : 1.7 (RC4), CSD as536be (2015)
Xtriage (Phenix) : 1.9-1692
EDS : trunk26765
Percentile statistics : 20151230.v01 (using entries in the PDB archive December 30th 2015)
Refmac : 5.8.0135
CCP4 : 6.5.0
Ideal geometry (proteins) : Engh & Huber (2001)
Ideal geometry (DNA, RNA) : Parkinson et al. (1996)
Validation Pipeline (wwPDB-VP) : trunk26865

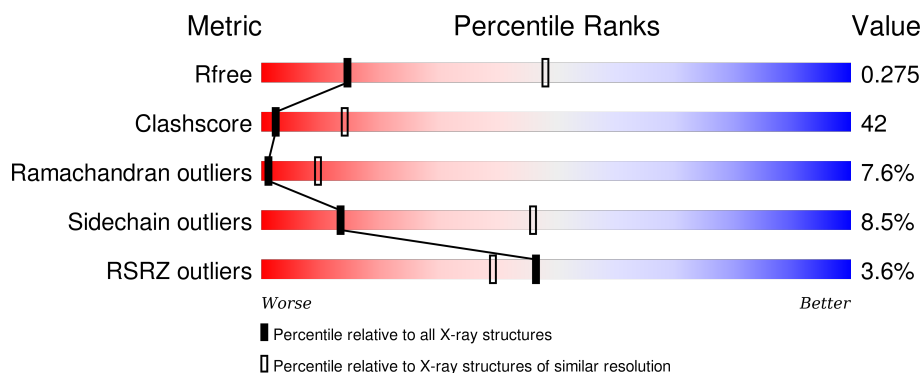
1 Overall quality at a glance

The following experimental techniques were used to determine the structure:

X-RAY DIFFRACTION

The reported resolution of this entry is 3.30 Å.

Percentile scores (ranging between 0-100) for global validation metrics of the entry are shown in the following graphic. The table shows the number of entries on which the scores are based.



Metric	Whole archive (#Entries)	Similar resolution (#Entries, resolution range(Å))
R_{free}	91344	2060 (3.40-3.20)
Clashscore	102246	1058 (3.38-3.22)
Ramachandran outliers	100387	1038 (3.38-3.22)
Sidechain outliers	100360	1037 (3.38-3.22)
RSRZ outliers	91569	2070 (3.40-3.20)

The table below summarises the geometric issues observed across the polymeric chains and their fit to the electron density. The red, orange, yellow and green segments on the lower bar indicate the fraction of residues that contain outliers for ≥ 3 , 2, 1 and 0 types of geometric quality criteria. A grey segment represents the fraction of residues that are not modelled. The numeric value for each fraction is indicated below the corresponding segment, with a dot representing fractions $\leq 5\%$. The upper red bar (where present) indicates the fraction of residues that have poor fit to the electron density. The numeric value is given above the bar.

Mol	Chain	Length	Quality of chain
1	A	580	<div> <div>7%</div> <div>34%</div> <div>56%</div> <div>10%</div> <div>.</div> </div>
1	B	580	<div> <div>%</div> <div>40%</div> <div>49%</div> <div>10%</div> <div>.</div> </div>
2	C	88	<div> <div>43%</div> <div>41%</div> <div>7%</div> <div>9%</div> </div>
2	D	88	<div> <div>%</div> <div>47%</div> <div>34%</div> <div>10%</div> <div>9%</div> </div>

2 Entry composition

There are 3 unique types of molecules in this entry. The entry contains 10358 atoms, of which 0 are hydrogens and 0 are deuteriums.

In the tables below, the ZeroOcc column contains the number of atoms modelled with zero occupancy, the AltConf column contains the number of residues with at least one atom in alternate conformation and the Trace column contains the number of residues modelled with at most 2 atoms.

- Molecule 1 is a protein called Serine/threonine-protein phosphatase 2A 65 kDa regulatory subunit A alpha isoform.

Mol	Chain	Residues	Atoms					ZeroOcc	AltConf	Trace
1	A	579	Total	C	N	O	S	0	0	0
			4515	2871	761	856	27			
1	B	579	Total	C	N	O	S	0	0	0
			4515	2871	761	856	27			

- Molecule 2 is a protein called Small T antigen.

Mol	Chain	Residues	Atoms					ZeroOcc	AltConf	Trace
2	C	80	Total	C	N	O	S	0	0	0
			662	427	111	110	14			
2	D	80	Total	C	N	O	S	0	0	0
			662	427	111	110	14			

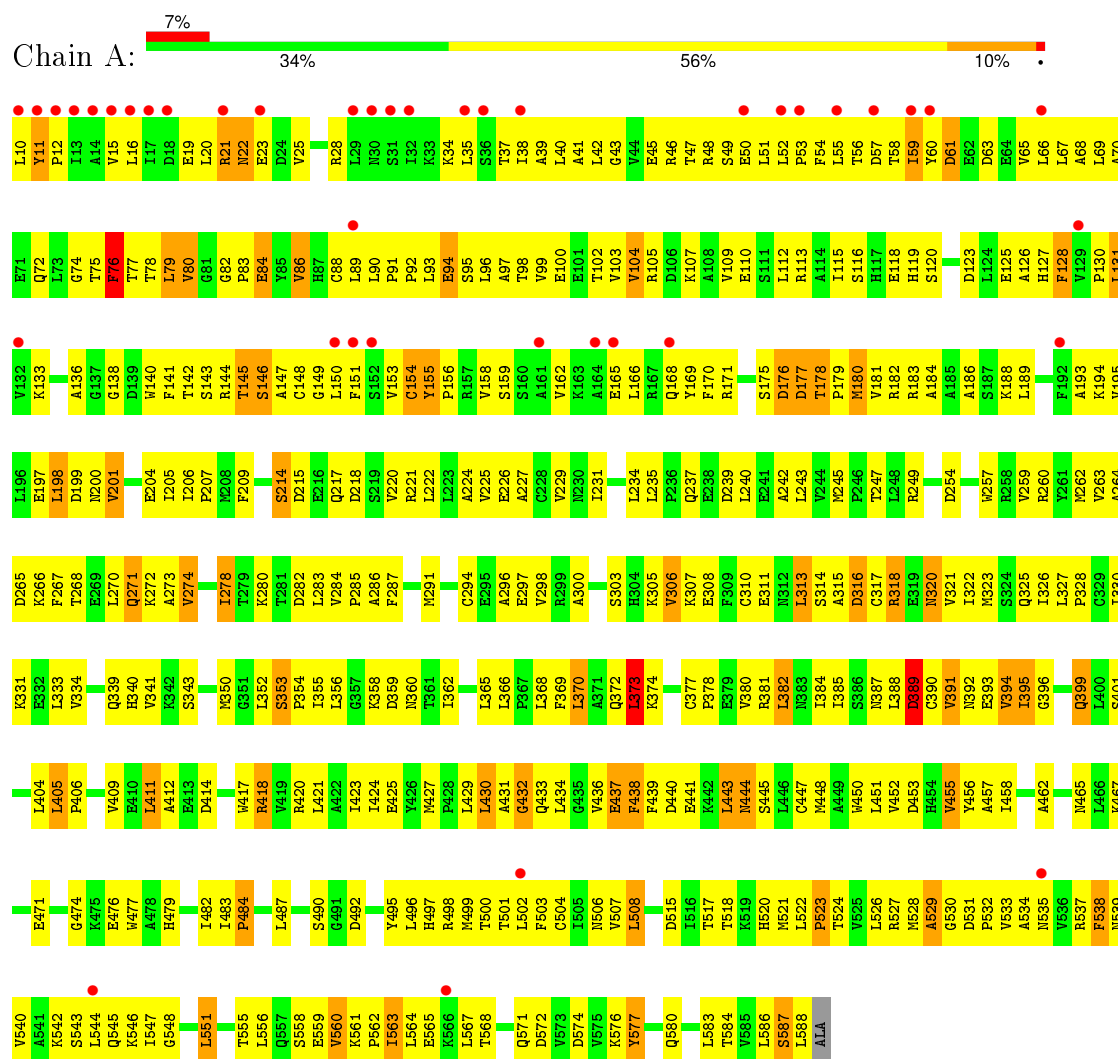
- Molecule 3 is ZINC ION (three-letter code: ZN) (formula: Zn).

Mol	Chain	Residues	Atoms		ZeroOcc	AltConf
3	D	2	Total	Zn	0	0
			2	2		
3	C	2	Total	Zn	0	0
			2	2		

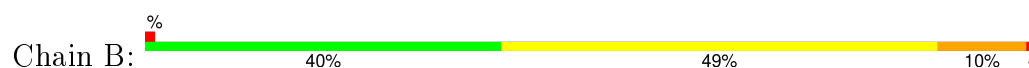
3 Residue-property plots

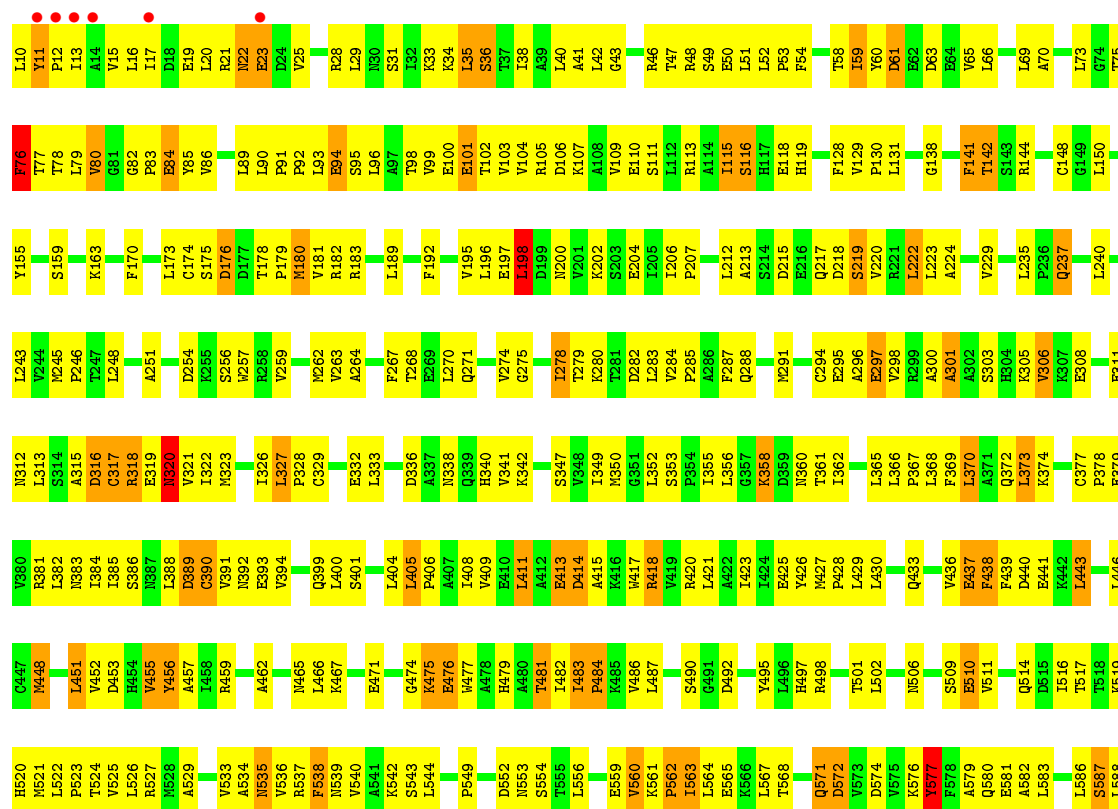
These plots are drawn for all protein, RNA and DNA chains in the entry. The first graphic for a chain summarises the proportions of errors displayed in the second graphic. The second graphic shows the sequence view annotated by issues in geometry and electron density. Residues are color-coded according to the number of geometric quality criteria for which they contain at least one outlier: green = 0, yellow = 1, orange = 2 and red = 3 or more. A red dot above a residue indicates a poor fit to the electron density ($\text{RSRZ} > 2$). Stretches of 2 or more consecutive residues without any outlier are shown as a green connector. Residues present in the sample, but not in the model, are shown in grey.

- Molecule 1: Serine/threonine-protein phosphatase 2A 65 kDa regulatory subunit A alpha isoform



- Molecule 1: Serine/threonine-protein phosphatase 2A 65 kDa regulatory subunit A alpha isoform

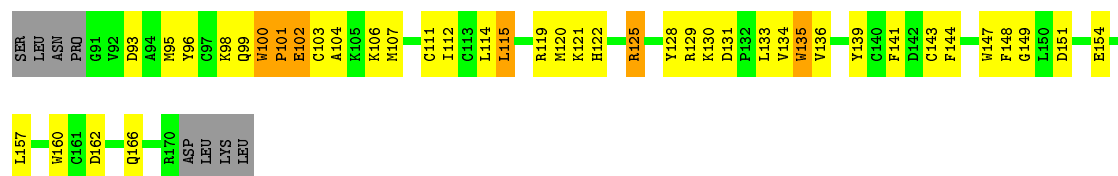




ALA

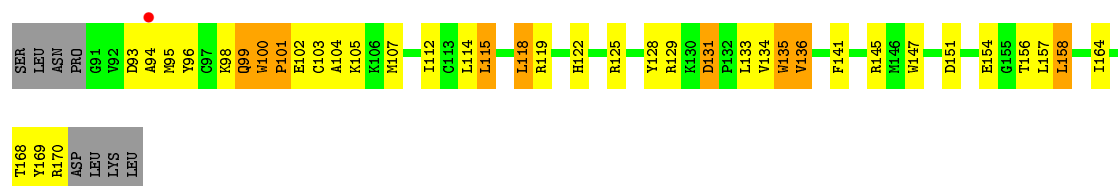
- Molecule 2: Small T antigen

Chain C: 43% 41% 7% 9%



- Molecule 2: Small T antigen

Chain D: 47% 34% 10% 9%



4 Data and refinement statistics

Property	Value	Source
Space group	C 2 2 21	Depositor
Cell constants a, b, c, α , β , γ	137.70Å 147.79Å 209.65Å 90.00° 90.00° 90.00°	Depositor
Resolution (Å)	60.40 – 3.30 60.40 – 3.30	Depositor EDS
% Data completeness (in resolution range)	94.9 (60.40-3.30) 95.0 (60.40-3.30)	Depositor EDS
R_{merge}	0.10	Depositor
R_{sym}	(Not available)	Depositor
$\langle I/\sigma(I) \rangle$ ¹	4.82 (at 3.33Å)	Xtriage
Refinement program	CNS 1.1	Depositor
R, R_{free}	0.247 , 0.312 0.222 , 0.275	Depositor DCC
R_{free} test set	1561 reflections (5.05%)	DCC
Wilson B-factor (Å ²)	88.0	Xtriage
Anisotropy	0.589	Xtriage
Bulk solvent k_{sol} (e/Å ³), B_{sol} (Å ²)	0.31 , 85.2	EDS
Estimated twinning fraction	No twinning to report.	Xtriage
L-test for twinning ²	$\langle L \rangle = 0.49$, $\langle L^2 \rangle = 0.32$	Xtriage
Outliers	0 of 30881 reflections	Xtriage
F_o, F_c correlation	0.93	EDS
Total number of atoms	10358	wwPDB-VP
Average B, all atoms (Å ²)	72.0	wwPDB-VP

Xtriage's analysis on translational NCS is as follows: *The largest off-origin peak in the Patterson function is 3.57% of the height of the origin peak. No significant pseudotranslation is detected.*

¹Intensities estimated from amplitudes.

²Theoretical values of $\langle |L| \rangle$, $\langle L^2 \rangle$ for acentric reflections are 0.5, 0.375 respectively for untwinned datasets, and 0.333, 0.2 for perfectly twinned datasets.

5 Model quality [i](#)

5.1 Standard geometry [i](#)

Bond lengths and bond angles in the following residue types are not validated in this section: ZN

The Z score for a bond length (or angle) is the number of standard deviations the observed value is removed from the expected value. A bond length (or angle) with $|Z| > 5$ is considered an outlier worth inspection. RMSZ is the root-mean-square of all Z scores of the bond lengths (or angles).

Mol	Chain	Bond lengths		Bond angles	
		RMSZ	$\# Z > 5$	RMSZ	$\# Z > 5$
1	A	0.44	0/4589	0.69	0/6231
1	B	0.52	1/4589 (0.0%)	0.72	0/6231
2	C	0.56	0/679	0.71	0/915
2	D	0.52	0/679	0.69	0/915
All	All	0.49	1/10536 (0.0%)	0.70	0/14292

All (1) bond length outliers are listed below:

Mol	Chain	Res	Type	Atoms	Z	Observed(Å)	Ideal(Å)
1	B	174	CYS	CB-SG	-5.23	1.73	1.81

There are no bond angle outliers.

There are no chirality outliers.

There are no planarity outliers.

5.2 Too-close contacts [i](#)

In the following table, the Non-H and H(model) columns list the number of non-hydrogen atoms and hydrogen atoms in the chain respectively. The H(added) column lists the number of hydrogen atoms added and optimized by MolProbity. The Clashes column lists the number of clashes within the asymmetric unit, whereas Symm-Clashes lists symmetry related clashes.

Mol	Chain	Non-H	H(model)	H(added)	Clashes	Symm-Clashes
1	A	4515	0	4623	410	0
1	B	4515	0	4623	394	0
2	C	662	0	649	48	0
2	D	662	0	649	42	0
3	C	2	0	0	0	0
3	D	2	0	0	0	0

Continued on next page...

Continued from previous page...

Mol	Chain	Non-H	H(model)	H(added)	Clashes	Symm-Clashes
All	All	10358	0	10544	886	0

The all-atom clashscore is defined as the number of clashes found per 1000 atoms (including hydrogen atoms). The all-atom clashscore for this structure is 42.

The worst 5 of 886 close contacts within the same asymmetric unit are listed below, sorted by their clash magnitude.

Atom-1	Atom-2	Interatomic distance (Å)	Clash overlap (Å)
1:B:278:ILE:H	1:B:278:ILE:HD12	1.10	1.10
1:B:94:GLU:HB2	1:B:131:LEU:HD11	1.32	1.05
1:B:222:LEU:HD22	1:B:223:LEU:HD23	1.40	1.00
1:A:496:LEU:HA	1:A:499:MET:HE3	1.42	1.00
1:A:353:SER:HB3	1:A:394:VAL:HG21	1.39	0.99

There are no symmetry-related clashes.

5.3 Torsion angles [i](#)

5.3.1 Protein backbone [i](#)

In the following table, the Percentiles column shows the percent Ramachandran outliers of the chain as a percentile score with respect to all X-ray entries followed by that with respect to entries of similar resolution.

The Analysed column shows the number of residues for which the backbone conformation was analysed, and the total number of residues.

Mol	Chain	Analysed	Favoured	Allowed	Outliers	Percentiles	
1	A	577/580 (100%)	417 (72%)	111 (19%)	49 (8%)	1	7
1	B	577/580 (100%)	446 (77%)	90 (16%)	41 (7%)	1	11
2	C	78/88 (89%)	59 (76%)	14 (18%)	5 (6%)	2	13
2	D	78/88 (89%)	65 (83%)	8 (10%)	5 (6%)	2	13
All	All	1310/1336 (98%)	987 (75%)	223 (17%)	100 (8%)	1	9

5 of 100 Ramachandran outliers are listed below:

Mol	Chain	Res	Type
1	A	61	ASP
1	A	155	TYR

Continued on next page...

Continued from previous page...

Mol	Chain	Res	Type
1	A	198	LEU
1	A	274	VAL
1	A	318	ARG

5.3.2 Protein sidechains ⓘ

In the following table, the Percentiles column shows the percent sidechain outliers of the chain as a percentile score with respect to all X-ray entries followed by that with respect to entries of similar resolution.

The Analysed column shows the number of residues for which the sidechain conformation was analysed, and the total number of residues.

Mol	Chain	Analysed	Rotameric	Outliers	Percentiles	
1	A	507/507 (100%)	467 (92%)	40 (8%)	15	49
1	B	507/507 (100%)	462 (91%)	45 (9%)	12	43
2	C	73/81 (90%)	68 (93%)	5 (7%)	20	57
2	D	73/81 (90%)	64 (88%)	9 (12%)	6	25
All	All	1160/1176 (99%)	1061 (92%)	99 (8%)	13	46

5 of 99 residues with a non-rotameric sidechain are listed below:

Mol	Chain	Res	Type
1	B	101	GLU
1	B	219	SER
2	D	115	LEU
1	B	115	ILE
1	B	175	SER

Some sidechains can be flipped to improve hydrogen bonding and reduce clashes. 5 of 27 such sidechains are listed below:

Mol	Chain	Res	Type
1	B	200	ASN
1	B	271	GLN
1	B	506	ASN
1	B	211	ASN
1	A	399	GLN

5.3.3 RNA [i](#)

There are no RNA molecules in this entry.

5.4 Non-standard residues in protein, DNA, RNA chains [i](#)

There are no non-standard protein/DNA/RNA residues in this entry.

5.5 Carbohydrates [i](#)

There are no carbohydrates in this entry.

5.6 Ligand geometry [i](#)

Of 4 ligands modelled in this entry, 4 are monoatomic - leaving 0 for Mogul analysis.

There are no bond length outliers.

There are no bond angle outliers.

There are no chirality outliers.

There are no torsion outliers.

There are no ring outliers.

No monomer is involved in short contacts.

5.7 Other polymers [i](#)

There are no such residues in this entry.

5.8 Polymer linkage issues [i](#)

There are no chain breaks in this entry.

6 Fit of model and data [i](#)

6.1 Protein, DNA and RNA chains [i](#)

In the following table, the column labelled ‘#RSRZ> 2’ contains the number (and percentage) of RSRZ outliers, followed by percent RSRZ outliers for the chain as percentile scores relative to all X-ray entries and entries of similar resolution. The OWAB column contains the minimum, median, 95th percentile and maximum values of the occupancy-weighted average B-factor per residue. The column labelled ‘Q< 0.9’ lists the number of (and percentage) of residues with an average occupancy less than 0.9.

Mol	Chain	Analysed	<RSRZ>	#RSRZ>2	OWAB(Å ²)	Q<0.9
1	A	579/580 (99%)	0.19	41 (7%) 19 15	17, 77, 147, 180	0
1	B	579/580 (99%)	-0.08	6 (1%) 84 80	15, 55, 142, 175	0
2	C	80/88 (90%)	-0.08	0 100 100	29, 54, 97, 117	0
2	D	80/88 (90%)	0.05	1 (1%) 79 74	28, 60, 98, 111	0
All	All	1318/1336 (98%)	0.05	48 (3%) 46 39	15, 65, 143, 180	0

The worst 5 of 48 RSRZ outliers are listed below:

Mol	Chain	Res	Type	RSRZ
1	B	13	ILE	8.7
1	A	11	TYR	8.6
1	A	12	PRO	7.1
1	B	14	ALA	6.8
1	A	10	LEU	6.6

6.2 Non-standard residues in protein, DNA, RNA chains [i](#)

There are no non-standard protein/DNA/RNA residues in this entry.

6.3 Carbohydrates [i](#)

There are no carbohydrates in this entry.

6.4 Ligands [i](#)

In the following table, the Atoms column lists the number of modelled atoms in the group and the number defined in the chemical component dictionary. LLDF column lists the quality of electron density of the group with respect to its neighbouring residues in protein, DNA or RNA chains. The B-factors column lists the minimum, median, 95th percentile and maximum values of B factors

of atoms in the group. The column labelled 'Q< 0.9' lists the number of atoms with occupancy less than 0.9.

Mol	Type	Chain	Res	Atoms	RSCC	RSR	LLDF	B-factors(\AA^2)	Q<0.9
3	ZN	D	175	1/1	0.99	0.13	-0.63	57,57,57,57	0
3	ZN	C	176	1/1	1.00	0.12	-0.90	40,40,40,40	0
3	ZN	C	175	1/1	0.99	0.12	-0.94	37,37,37,37	0
3	ZN	D	176	1/1	0.99	0.10	-	38,38,38,38	0

6.5 Other polymers [i](#)

There are no such residues in this entry.