



wwPDB X-ray Structure Validation Summary Report ⓘ

Jan 31, 2016 – 09:34 PM GMT

PDB ID : 1PL0
Title : Crystal structure of human ATIC in complex with folate-based inhibitor, BW2315U89UC
Authors : Cheong, C.G.; Greasley, S.E.; Horton, P.A.; Beardsley, G.P.; Wilson, I.A.
Deposited on : 2003-06-06
Resolution : 2.60 Å(reported)

This is a wwPDB X-ray Structure Validation Summary Report for a publicly released PDB entry.
We welcome your comments at validation@mail.wwpdb.org
A user guide is available at
<http://wwpdb.org/validation/2016/XrayValidationReportHelp>
with specific help available everywhere you see the ⓘ symbol.

The following versions of software and data (see [references ⓘ](#)) were used in the production of this report:

MolProbity : 4.02b-467
Mogul : 1.7 (RC4), CSD as536be (2015)
Xtriage (Phenix) : 1.9-1692
EDS : rb-20026688
Percentile statistics : 20151230.v01 (using entries in the PDB archive December 30th 2015)
Refmac : 5.8.0135
CCP4 : 6.5.0
Ideal geometry (proteins) : Engh & Huber (2001)
Ideal geometry (DNA, RNA) : Parkinson et al. (1996)
Validation Pipeline (wwPDB-VP) : trunk26865

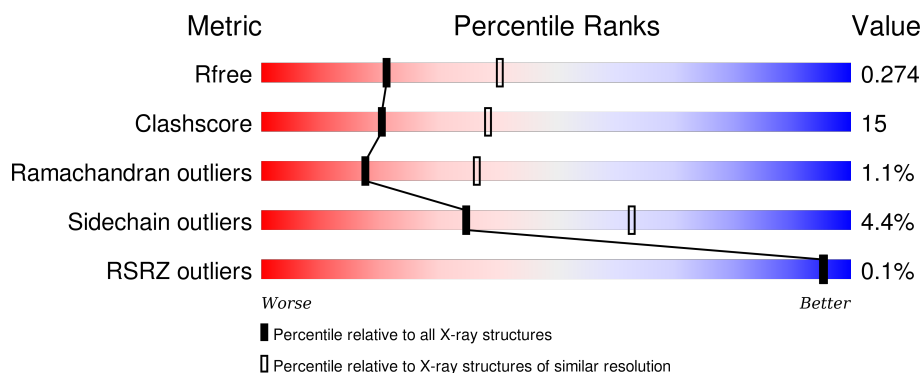
1 Overall quality at a glance

The following experimental techniques were used to determine the structure:

X-RAY DIFFRACTION





The reported resolution of this entry is 2.60 Å.

Percentile scores (ranging between 0-100) for global validation metrics of the entry are shown in the following graphic. The table shows the number of entries on which the scores are based.



Metric	Whole archive (#Entries)	Similar resolution (#Entries, resolution range(Å))
R_{free}	91344	2328 (2.60-2.60)
Clashscore	102246	2679 (2.60-2.60)
Ramachandran outliers	100387	2635 (2.60-2.60)
Sidechain outliers	100360	2635 (2.60-2.60)
RSRZ outliers	91569	2334 (2.60-2.60)

The table below summarises the geometric issues observed across the polymeric chains and their fit to the electron density. The red, orange, yellow and green segments on the lower bar indicate the fraction of residues that contain outliers for ≥ 3 , 2, 1 and 0 types of geometric quality criteria. A grey segment represents the fraction of residues that are not modelled. The numeric value for each fraction is indicated below the corresponding segment, with a dot representing fractions $\leq 5\%$. The upper red bar (where present) indicates the fraction of residues that have poor fit to the electron density. The numeric value is given above the bar.

Mol	Chain	Length	Quality of chain
1	A	592	 69% 29% ..
1	B	592	 72% 25% ..
1	C	592	 68% 29% ..
1	D	592	 68% 28% ..

2 Entry composition

There are 6 unique types of molecules in this entry. The entry contains 17953 atoms, of which 0 are hydrogens and 0 are deuteriums.

In the tables below, the ZeroOcc column contains the number of atoms modelled with zero occupancy, the AltConf column contains the number of residues with at least one atom in alternate conformation and the Trace column contains the number of residues modelled with at most 2 atoms.

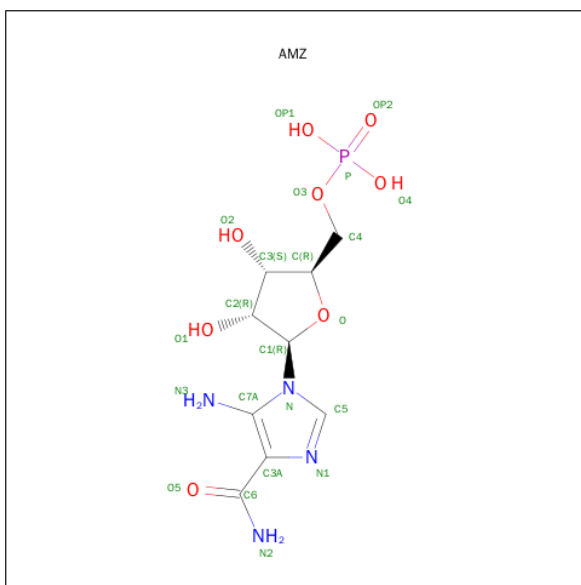
- Molecule 1 is a protein called Bifunctional purine biosynthesis protein PURH.

Mol	Chain	Residues	Atoms					ZeroOcc	AltConf	Trace
1	A	589	Total	C	N	O	S	0	0	0
			4424	2801	776	829	18			
1	B	587	Total	C	N	O	S	0	0	0
			4405	2781	768	838	18			
1	C	585	Total	C	N	O	S	0	0	0
			4332	2736	763	815	18			
1	D	579	Total	C	N	O	S	0	0	0
			4236	2677	741	800	18			

- Molecule 2 is POTASSIUM ION (three-letter code: K) (formula: K).

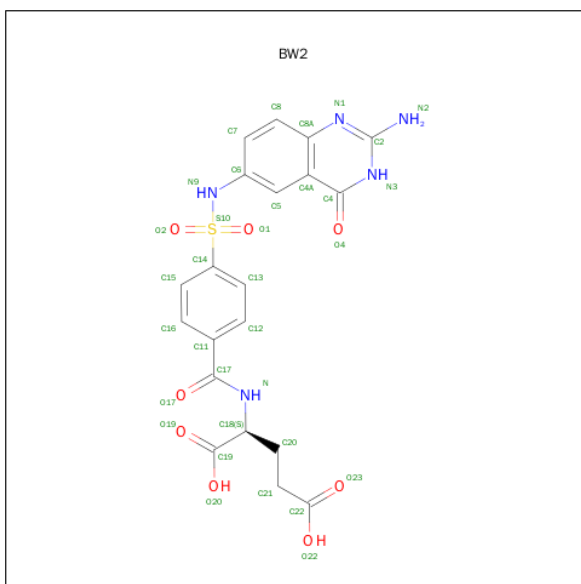
Mol	Chain	Residues	Atoms		ZeroOcc	AltConf
2	B	1	Total	K	0	0
			1	1		
2	A	1	Total	K	0	0
			1	1		
2	D	1	Total	K	0	0
			1	1		
2	C	1	Total	K	0	0
			1	1		

- Molecule 3 is AMINOIMIDAZOLE 4-CARBOXAMIDE RIBONUCLEOTIDE (three-letter code: AMZ) (formula: C₉H₁₅N₄O₈P).



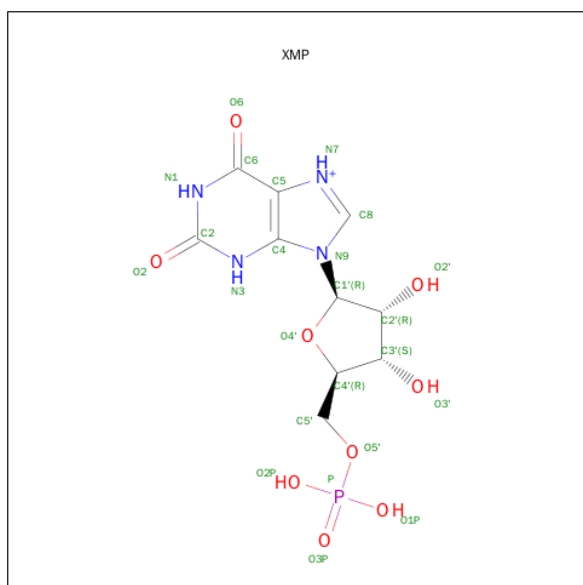
Mol	Chain	Residues	Atoms					ZeroOcc	AltConf
3	B	1	Total	C	N	O	P	0	0
			22	9	4	8	1		
3	D	1	Total	C	N	O	P	0	0
			22	9	4	8	1		
3	D	1	Total	C	N	O	P	0	0
			22	9	4	8	1		

- Molecule 4 is N-(4-[(2-AMINO-4-OXO-3,4-DIHYDROQUINAZOLIN-6-YL)AMINO]SULFONYL)BENZOYL)GLUTAMIC ACID (three-letter code: BW2) (formula: $C_{20}H_{19}N_5O_8S$).



Mol	Chain	Residues	Atoms					ZeroOcc	AltConf
4	B	1	Total	C	N	O	S	0	0
			25	15	5	4	1		
4	D	1	Total	C	N	O	S	0	0
			25	15	5	4	1		

- Molecule 5 is XANTHOSINE-5'-MONOPHOSPHATE (three-letter code: XMP) (formula: $C_{10}H_{14}N_4O_9P$).



Mol	Chain	Residues	Atoms					ZeroOcc	AltConf
5	A	1	Total	C	N	O	P	0	0
			24	10	4	9	1		
5	C	1	Total	C	N	O	P	0	0
			24	10	4	9	1		

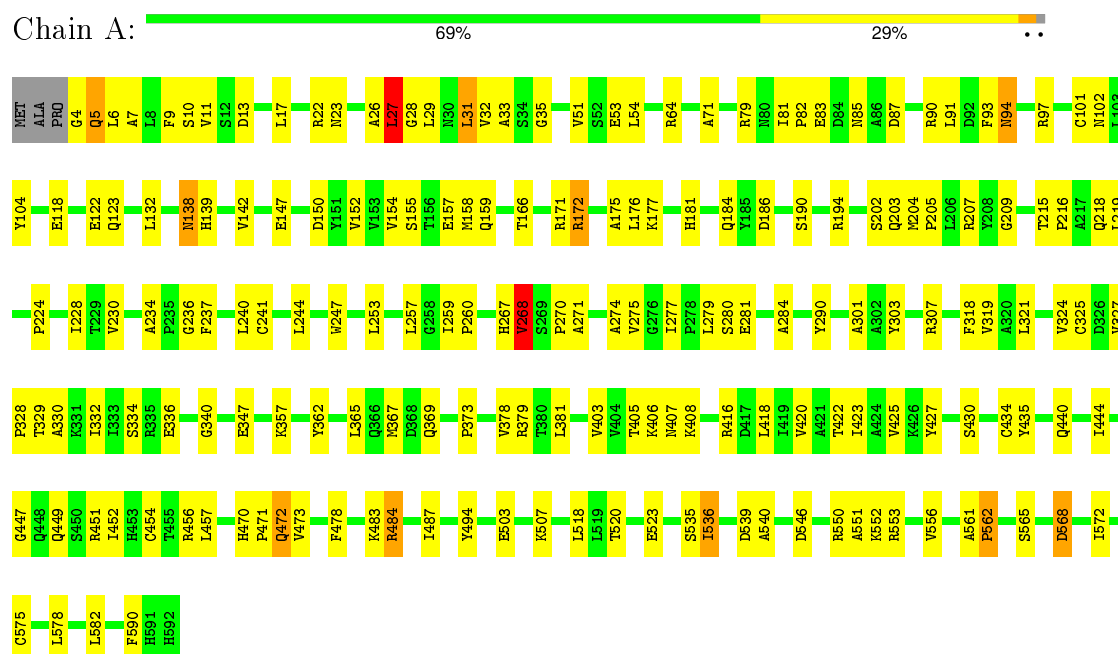
- Molecule 6 is water.

Mol	Chain	Residues	Atoms		ZeroOcc	AltConf
6	A	90	Total	O	0	0
			90	90		
6	B	124	Total	O	0	0
			124	124		
6	C	77	Total	O	0	0
			77	77		
6	D	97	Total	O	0	0
			97	97		

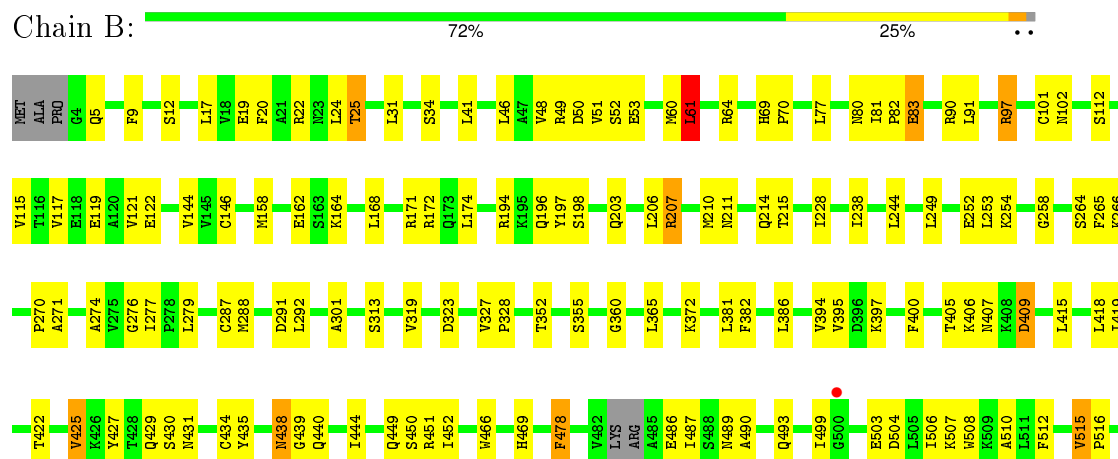
3 Residue-property plots

These plots are drawn for all protein, RNA and DNA chains in the entry. The first graphic for a chain summarises the proportions of errors displayed in the second graphic. The second graphic shows the sequence view annotated by issues in geometry and electron density. Residues are color-coded according to the number of geometric quality criteria for which they contain at least one outlier: green = 0, yellow = 1, orange = 2 and red = 3 or more. A red dot above a residue indicates a poor fit to the electron density ($\text{RSRZ} > 2$). Stretches of 2 or more consecutive residues without any outlier are shown as a green connector. Residues present in the sample, but not in the model, are shown in grey.

• Molecule 1: Bifunctional purine biosynthesis protein PURH



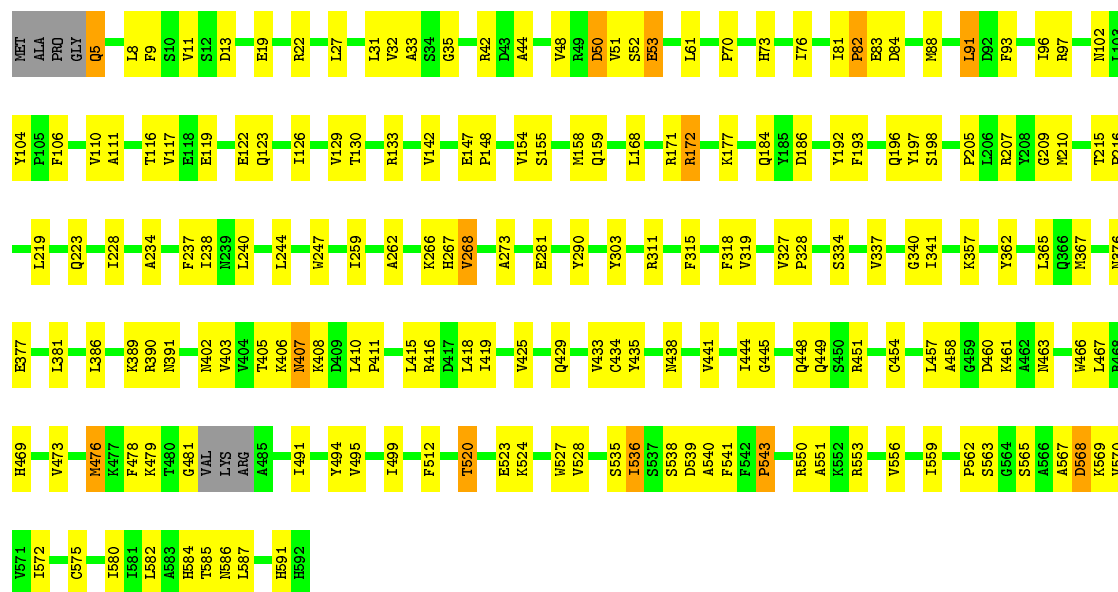
• Molecule 1: Bifunctional purine biosynthesis protein PURH





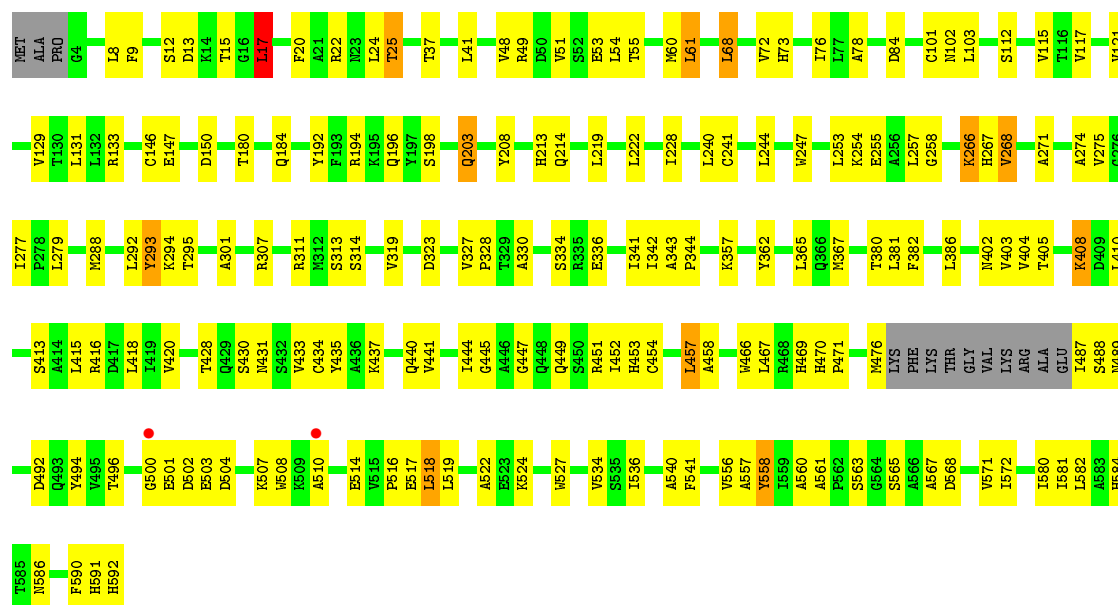
• Molecule 1: Bifunctional purine biosynthesis protein PURH

Chain C: 68% 29% ..



• Molecule 1: Bifunctional purine biosynthesis protein PURH

Chain D: 68% 28% ..



4 Data and refinement statistics

Property	Value	Source
Space group	P 1 21 1	Depositor
Cell constants a, b, c, α , β , γ	77.12Å 92.97Å 178.49Å 90.00° 91.19° 90.00°	Depositor
Resolution (Å)	20.00 – 2.60 19.96 – 2.59	Depositor EDS
% Data completeness (in resolution range)	(Not available) (20.00-2.60) 86.5 (19.96-2.59)	Depositor EDS
R_{merge}	(Not available)	Depositor
R_{sym}	0.12	Depositor
$\langle I/\sigma(I) \rangle$ ¹	4.80 (at 2.59Å)	Xtriage
Refinement program	CNS	Depositor
R, R_{free}	0.213 , 0.275 0.212 , 0.274	Depositor DCC
R_{free} test set	3426 reflections (5.08%)	DCC
Wilson B-factor (Å ²)	25.5	Xtriage
Anisotropy	0.029	Xtriage
Bulk solvent k_{sol} (e/Å ³), B_{sol} (Å ²)	0.28 , 9.3	EDS
Estimated twinning fraction	0.157 for h,-k,-l	Xtriage
L-test for twinning ²	$\langle L \rangle = 0.46$, $\langle L^2 \rangle = 0.29$	Xtriage
Outliers	0 of 71023 reflections	Xtriage
F_o, F_c correlation	0.90	EDS
Total number of atoms	17953	wwPDB-VP
Average B, all atoms (Å ²)	27.0	wwPDB-VP

Xtriage's analysis on translational NCS is as follows: *The largest off-origin peak in the Patterson function is 3.99% of the height of the origin peak. No significant pseudotranslation is detected.*

¹Intensities estimated from amplitudes.

²Theoretical values of $\langle |L| \rangle$, $\langle L^2 \rangle$ for acentric reflections are 0.5, 0.375 respectively for untwinned datasets, and 0.333, 0.2 for perfectly twinned datasets.

5 Model quality

5.1 Standard geometry

Bond lengths and bond angles in the following residue types are not validated in this section: BW2, AMZ, XMP, K

The Z score for a bond length (or angle) is the number of standard deviations the observed value is removed from the expected value. A bond length (or angle) with $|Z| > 5$ is considered an outlier worth inspection. RMSZ is the root-mean-square of all Z scores of the bond lengths (or angles).

Mol	Chain	Bond lengths		Bond angles	
		RMSZ	$\# Z > 5$	RMSZ	$\# Z > 5$
1	A	0.42	0/4507	0.65	0/6131
1	B	0.45	0/4487	0.66	0/6104
1	C	0.43	0/4411	0.64	0/6002
1	D	0.46	0/4314	0.66	0/5882
All	All	0.44	0/17719	0.65	0/24119

Chiral center outliers are detected by calculating the chiral volume of a chiral center and verifying if the center is modelled as a planar moiety or with the opposite hand. A planarity outlier is detected by checking planarity of atoms in a peptide group, atoms in a mainchain group or atoms of a sidechain that are expected to be planar.

Mol	Chain	#Chirality outliers	#Planarity outliers
1	A	0	1
1	C	0	1
All	All	0	2

There are no bond length outliers.

There are no bond angle outliers.

There are no chirality outliers.

All (2) planarity outliers are listed below:

Mol	Chain	Res	Type	Group
1	A	303	TYR	Sidechain
1	C	303	TYR	Sidechain

5.2 Too-close contacts ⓘ

In the following table, the Non-H and H(model) columns list the number of non-hydrogen atoms and hydrogen atoms in the chain respectively. The H(added) column lists the number of hydrogen atoms added and optimized by MolProbity. The Clashes column lists the number of clashes within the asymmetric unit, whereas Symm-Clashes lists symmetry related clashes.

Mol	Chain	Non-H	H(model)	H(added)	Clashes	Symm-Clashes
1	A	4424	0	4391	137	0
1	B	4405	0	4320	130	0
1	C	4332	0	4227	144	0
1	D	4236	0	4090	136	0
2	A	1	0	0	0	0
2	B	1	0	0	0	0
2	C	1	0	0	0	0
2	D	1	0	0	0	0
3	B	22	0	13	1	0
3	D	44	0	26	1	0
4	B	25	0	11	2	0
4	D	25	0	11	6	0
5	A	24	0	12	3	0
5	C	24	0	12	0	0
6	A	90	0	0	6	0
6	B	124	0	0	9	0
6	C	77	0	0	3	0
6	D	97	0	0	2	0
All	All	17953	0	17113	507	0

The all-atom clashscore is defined as the number of clashes found per 1000 atoms (including hydrogen atoms). The all-atom clashscore for this structure is 15.

The worst 5 of 507 close contacts within the same asymmetric unit are listed below, sorted by their clash magnitude.

Atom-1	Atom-2	Interatomic distance (Å)	Clash overlap (Å)
1:C:281:GLU:HG2	1:C:290:TYR:HE1	1.30	0.94
1:C:435:TYR:CZ	1:C:536:ILE:HD11	2.06	0.91
1:A:13:ASP:H	1:A:102:ASN:HD22	1.19	0.86
1:A:552:LYS:HG2	1:A:578:LEU:HD22	1.59	0.84
1:C:244:LEU:HD12	1:D:381:LEU:HD23	1.60	0.84

There are no symmetry-related clashes.

5.3 Torsion angles ⓘ

5.3.1 Protein backbone ⓘ

In the following table, the Percentiles column shows the percent Ramachandran outliers of the chain as a percentile score with respect to all X-ray entries followed by that with respect to entries of similar resolution.

The Analysed column shows the number of residues for which the backbone conformation was analysed, and the total number of residues.

Mol	Chain	Analysed	Favoured	Allowed	Outliers	Percentiles	
1	A	587/592 (99%)	541 (92%)	39 (7%)	7 (1%)	16	33
1	B	583/592 (98%)	543 (93%)	36 (6%)	4 (1%)	26	51
1	C	581/592 (98%)	540 (93%)	36 (6%)	5 (1%)	21	42
1	D	575/592 (97%)	514 (89%)	52 (9%)	9 (2%)	12	24
All	All	2326/2368 (98%)	2138 (92%)	163 (7%)	25 (1%)	17	36

5 of 25 Ramachandran outliers are listed below:

Mol	Chain	Res	Type
1	C	82	PRO
1	C	407	ASN
1	A	35	GLY
1	B	61	LEU
1	B	276	GLY

5.3.2 Protein sidechains ⓘ

In the following table, the Percentiles column shows the percent sidechain outliers of the chain as a percentile score with respect to all X-ray entries followed by that with respect to entries of similar resolution.

The Analysed column shows the number of residues for which the sidechain conformation was analysed, and the total number of residues.

Mol	Chain	Analysed	Rotameric	Outliers	Percentiles	
1	A	460/488 (94%)	439 (95%)	21 (5%)	33	61
1	B	456/488 (93%)	438 (96%)	18 (4%)	39	68
1	C	436/488 (89%)	419 (96%)	17 (4%)	39	68
1	D	423/488 (87%)	401 (95%)	22 (5%)	29	54
All	All	1775/1952 (91%)	1697 (96%)	78 (4%)	35	63

5 of 78 residues with a non-rotameric sidechain are listed below:

Mol	Chain	Res	Type
1	B	450	SER
1	C	91	LEU
1	D	454	CYS
1	B	478	PHE
1	C	5	GLN

Some sidechains can be flipped to improve hydrogen bonding and reduce clashes. 5 of 32 such sidechains are listed below:

Mol	Chain	Res	Type
1	B	489	ASN
1	C	184	GLN
1	D	203	GLN
1	C	102	ASN
1	C	245	ASN

5.3.3 RNA ⓘ

There are no RNA molecules in this entry.

5.4 Non-standard residues in protein, DNA, RNA chains ⓘ

There are no non-standard protein/DNA/RNA residues in this entry.

5.5 Carbohydrates ⓘ

There are no carbohydrates in this entry.

5.6 Ligand geometry ⓘ

Of 11 ligands modelled in this entry, 4 are monoatomic - leaving 7 for Mogul analysis.

In the following table, the Counts columns list the number of bonds (or angles) for which Mogul statistics could be retrieved, the number of bonds (or angles) that are observed in the model and the number of bonds (or angles) that are defined in the chemical component dictionary. The Link column lists molecule types, if any, to which the group is linked. The Z score for a bond length (or angle) is the number of standard deviations the observed value is removed from the expected value. A bond length (or angle) with $|Z| > 2$ is considered an outlier worth inspection. RMSZ is the root-mean-square of all Z scores of the bond lengths (or angles).

Mol	Type	Chain	Res	Link	Bond lengths			Bond angles		
					Counts	RMSZ	# Z > 2	Counts	RMSZ	# Z > 2
5	XMP	A	901	-	18,26,26	2.36	4 (22%)	22,40,40	2.35	6 (27%)
3	AMZ	B	702	-	18,23,23	2.80	6 (33%)	20,35,35	1.51	4 (20%)
4	BW2	B	802	-	27,27,36	4.88	15 (55%)	35,40,52	2.26	9 (25%)
5	XMP	C	903	-	18,26,26	2.46	4 (22%)	22,40,40	2.48	6 (27%)
3	AMZ	D	703	-	18,23,23	3.09	6 (33%)	20,35,35	1.55	3 (15%)
3	AMZ	D	704	-	18,23,23	2.80	6 (33%)	20,35,35	1.44	4 (20%)
4	BW2	D	804	-	27,27,36	4.92	15 (55%)	35,40,52	2.06	11 (31%)

In the following table, the Chirals column lists the number of chiral outliers, the number of chiral centers analysed, the number of these observed in the model and the number defined in the chemical component dictionary. Similar counts are reported in the Torsion and Rings columns. '-' means no outliers of that kind were identified.

Mol	Type	Chain	Res	Link	Chirals	Torsions	Rings
5	XMP	A	901	-	-	0/6/26/26	0/3/3/3
3	AMZ	B	702	-	-	0/6/30/30	0/2/2/2
4	BW2	B	802	-	-	0/15/15/28	0/3/3/3
5	XMP	C	903	-	-	0/6/26/26	0/3/3/3
3	AMZ	D	703	-	-	0/6/30/30	0/2/2/2
3	AMZ	D	704	-	-	0/6/30/30	0/2/2/2
4	BW2	D	804	-	-	0/15/15/28	0/3/3/3

The worst 5 of 56 bond length outliers are listed below:

Mol	Chain	Res	Type	Atoms	Z	Observed(Å)	Ideal(Å)
4	B	802	BW2	C11-C17	-5.21	1.42	1.50
4	D	804	BW2	C11-C17	-5.18	1.42	1.50
3	D	703	AMZ	C3A-C7A	-4.51	1.37	1.44
3	D	704	AMZ	C3A-C7A	-4.40	1.37	1.44
3	B	702	AMZ	C3A-C7A	-3.71	1.38	1.44

The worst 5 of 43 bond angle outliers are listed below:

Mol	Chain	Res	Type	Atoms	Z	Observed(°)	Ideal(°)
4	B	802	BW2	O1-S10-O2	-7.09	110.14	119.54
5	C	903	XMP	C4'-O4'-C1'	-5.50	103.67	109.72
4	D	804	BW2	O1-S10-O2	-5.49	112.26	119.54
5	A	901	XMP	C4'-O4'-C1'	-4.43	104.85	109.72
3	B	702	AMZ	O5-C6-N2	-4.05	116.89	122.59

There are no chirality outliers.

There are no torsion outliers.

There are no ring outliers.

5 monomers are involved in 13 short contacts:

Mol	Chain	Res	Type	Clashes	Symm-Clashes
5	A	901	XMP	3	0
3	B	702	AMZ	1	0
4	B	802	BW2	2	0
3	D	703	AMZ	1	0
4	D	804	BW2	6	0

5.7 Other polymers [i](#)

There are no such residues in this entry.

5.8 Polymer linkage issues [i](#)

There are no chain breaks in this entry.

6 Fit of model and data [i](#)

6.1 Protein, DNA and RNA chains [i](#)

In the following table, the column labelled ‘#RSRZ> 2’ contains the number (and percentage) of RSRZ outliers, followed by percent RSRZ outliers for the chain as percentile scores relative to all X-ray entries and entries of similar resolution. The OWAB column contains the minimum, median, 95th percentile and maximum values of the occupancy-weighted average B-factor per residue. The column labelled ‘Q< 0.9’ lists the number of (and percentage) of residues with an average occupancy less than 0.9.

Mol	Chain	Analysed	<RSRZ>	#RSRZ>2	OWAB(Å ²)	Q<0.9
1	A	589/592 (99%)	-0.73	0 100 100	6, 26, 51, 64	0
1	B	587/592 (99%)	-0.75	1 (0%) 95 95	3, 22, 51, 74	0
1	C	585/592 (98%)	-0.68	0 100 100	8, 29, 54, 66	0
1	D	579/592 (97%)	-0.73	2 (0%) 94 93	4, 25, 54, 75	0
All	All	2340/2368 (98%)	-0.72	3 (0%) 95 95	3, 25, 53, 75	0

All (3) RSRZ outliers are listed below:

Mol	Chain	Res	Type	RSRZ
1	D	510	ALA	2.5
1	B	500	GLY	2.4
1	D	500	GLY	2.3

6.2 Non-standard residues in protein, DNA, RNA chains [i](#)

There are no non-standard protein/DNA/RNA residues in this entry.

6.3 Carbohydrates [i](#)

There are no carbohydrates in this entry.

6.4 Ligands [i](#)

In the following table, the Atoms column lists the number of modelled atoms in the group and the number defined in the chemical component dictionary. LLDF column lists the quality of electron density of the group with respect to its neighbouring residues in protein, DNA or RNA chains. The B-factors column lists the minimum, median, 95th percentile and maximum values of B factors of atoms in the group. The column labelled ‘Q< 0.9’ lists the number of atoms with occupancy less than 0.9.

Mol	Type	Chain	Res	Atoms	RSCC	RSR	LLDF	B-factors(\AA^2)	Q<0.9
3	AMZ	D	703	22/22	0.95	0.15	1.90	34,39,40,41	0
3	AMZ	B	702	22/22	0.97	0.13	0.63	27,30,32,33	0
3	AMZ	D	704	22/22	0.97	0.12	0.38	20,22,25,27	0
4	BW2	B	802	25/34	0.97	0.12	0.16	21,25,32,33	0
5	XMP	A	901	24/24	0.97	0.11	-0.04	19,21,26,31	0
4	BW2	D	804	25/34	0.96	0.13	-0.13	27,31,33,34	0
5	XMP	C	903	24/24	0.98	0.09	-0.78	17,21,28,30	0
2	K	A	1001	1/1	0.99	0.06	-2.33	16,16,16,16	0
2	K	B	1002	1/1	0.99	0.07	-2.45	12,12,12,12	0
2	K	D	1004	1/1	0.99	0.07	-2.57	17,17,17,17	0
2	K	C	1003	1/1	0.99	0.06	-3.31	17,17,17,17	0

6.5 Other polymers [i](#)

There are no such residues in this entry.